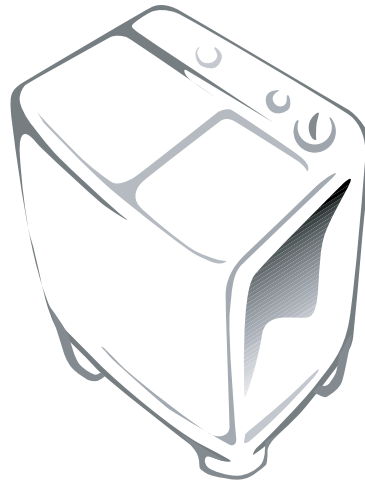




Owner's Instructions



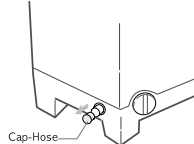
Before operating the unit, please read this manual throughly, and retain for future reference.

- BEFORE USING THE WASHER 1**
- CAUTIONS 1**
- PRECAUTIONS WHEN OPERATING 1**
- DESCRIPTION OF PARTS 2**
- CONTROL PANEL 2**
- INSTALLATION 3**
- ENVIRONMENT 3
- CHANGING THE POSITION OF THE DRAIN HOSE 3
- HOW TO CLEAN THE FILTER 3
- CONNECTING THE DRAIN HOSE 3
- CLEANING THE MACHINE 3**
- WASHING PROCEDURE 4**
- TO WASH 4
- SPIN DRY 5
- RINSING 5
- OVER FLOW RINSE 5
- ADDITIONAL RINSE 6
- LAUNDRY GUIDE 6**
- MAINTENANCE 6**
- TROUBLESHOOTING**
- SPECIFICATIONS**

Register your product at
www.samsung.com/global/register
CODE NO. : DC68-01942C-01

BEFORE USING THE WASHER

- In case of pump drained washer, remove the cap-hose from the drain hole.

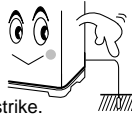


- Take out personal belongings from pockets. **Caution**, Check the pockets! Hairpins and coins cause damages to clothes and washing machine. They make noise and problems to the machine. Must check the pocket.



CAUTIONS

- **Be sure that the washer is grounded.**
To avoid electrical shock, use a metal pipe for the ground connection. But, don't ground the washer with gas pipes or telephone lines to avoid to dangers of explosion or lightning strike.



- **Do not put your hands into the spin dryer basket when it is spinning.**
Your fingers can be caught by spinning laundry and damaged.



- **Never allow children to operate or play with the washer.**
Children playing with the washer may accidentally fall into the washing tub.

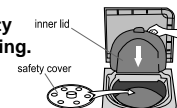


- **Disconnect the power cord from the power supply when not in use.**
- **Ventilation opening must not be obstructed by carpeting when the washing machine is installed on a carpeted floor.**
- **If the supply cord of this appliance is damaged, it must only be replaced by a repair shop appointed by the manufacturer, because special purpose tools are required.**
- **To avoid overfilling and damages this appliance must be filled with the operator present using a moderate water supply pressure only.**
- **For washing machines with ventilation openings in the base, that a carpet must not obstruct the openings.**

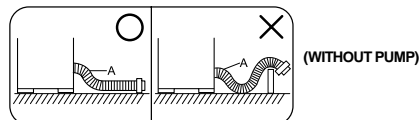
PRECAUTIONS WHEN OPERATING

- **Don't use excessively hot water. (50°C or more)**
Plastic parts may be deformed or damaged. Also, clothing may be deformed or decolorated.
- **Before washing, check all pockets.**
If nails or pins remain in pockets, they may damage the washer or clothes.
- **Close the water tap a little if the water pressure is too high.**
- **To avoid water splashes, close the wash tub lid.**
- **Never splash water on the control panel.**

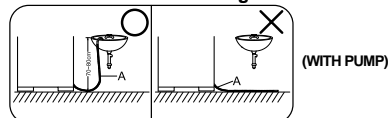
- **Be sure to cover with the safety cover on laundry before spinning.**
This prevents laundry from being tossed out and damaged.



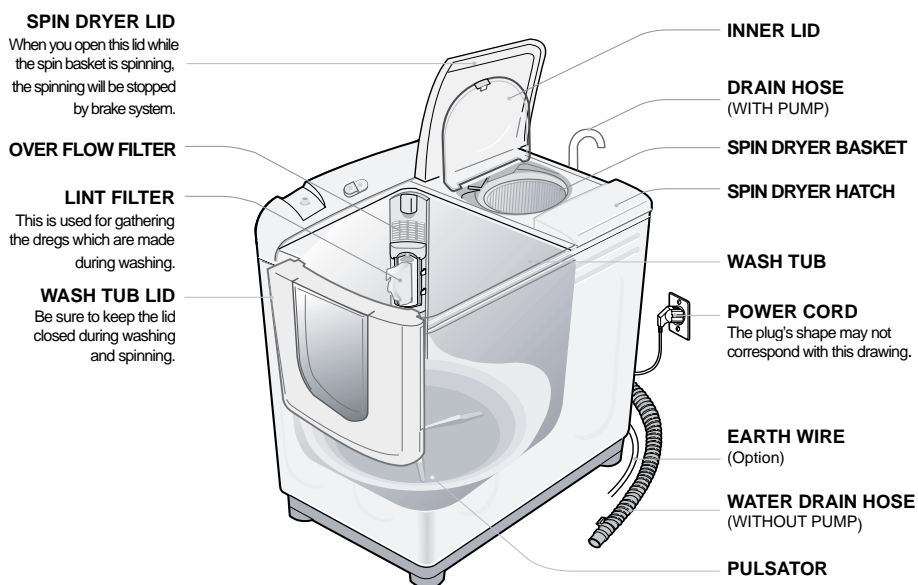
- **Be sure lay the drain hose(A) down.**



- **Be sure place the drain hose(A) in sink or bath about 70~80cm above the ground.**

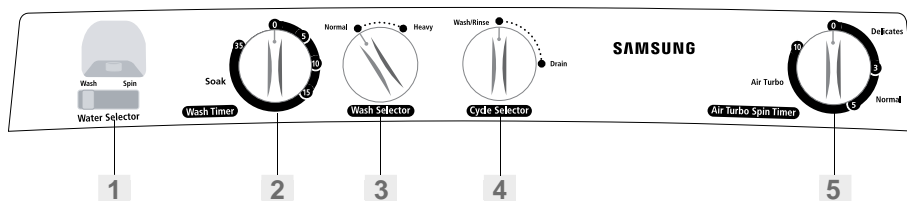


DESCRIPTION OF PARTS



CONTROL PANEL

- 1. WATER SELECTOR**
During washing, WATER SELECTOR KNOB should be selected to wash. During spin rinsing, WATER SELECTOR KNOB should be selected to spin.
- 2. WASH TIMER**
This is used to set the wash time, 1-15 minutes.
- 3. WASH SELECTOR**
You can wash laundry effectively by various methods.
- 4. CYCLE SELECTOR**
This is used to set the Washing/Rinsing or Draining.
- 5. AIR TURBO SPIN TIMER**
This is used to set the spin time, 1-10 minutes.



INSTALLATION

ENVIRONMENT

Leave some space

Space at least 15cm between the washer and the wall.

Place the washer on a sturdy flat surface.

If the washer is placed on an uneven or weak surface, noise or vibration may be occurred. (Allowable is 2°)

Never install the washer near water.

Do not place the washer in steamy rooms or where the washer is directly exposed to rain. Moisture may destroy the electrical insulation and cause an electrical shock hazard.

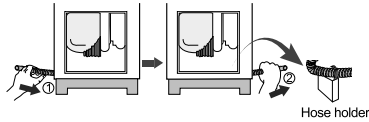
Avoid direct sunlight or heating devices.

As plastic and electrical components are affected by direct heat, never place the washer near heaters, boilers, etc. Do not place under direct sunlight.

CHANGING THE POSITION OF THE DRAIN HOSE

Before attempting to change the position of the drain hose, disconnect the plug from the outlet.

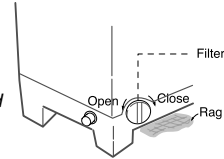
1. Route the drain hose inside the machine.
2. Take out the drain hose from the opposite hole and insert the drain hose into the hose holder.



HOW TO CLEAN THE FILTER (In case drain pump)

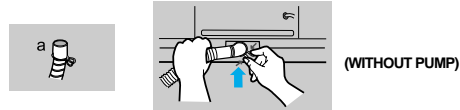
1. Place a rag under the washer filter not to wet the floor.
2. Rotate the filter counterclockwise and pull out the filter.
3. Remove dirt and rotate the filter clockwise until it locks in position.

Remark : Should be cleaned Filter at least 1 time a week.

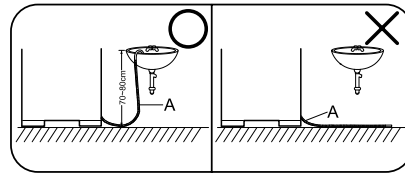


CONNECTING THE DRAIN HOSE

Insert the drain hose(a) and push it tightly to be connected as arrow direction.



Install the drain hose(A) about 70~80cm above the ground for pump model.

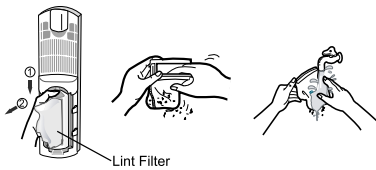


CLEANING THE MACHINE

CLEANING THE LINT FILTER

If the dregs are filled up in the lint filter after finishing the wash, push down(1) and pull it out(2) as shown in figure.

Remove the collected lint and rinse the filter net.



CLEANING THE WASH TUB

Wipe off stains on the cabinet and operation panel with soft cloth. Do not use benzene, thinners, cleanser, or wax, nor scrub the washer with a brush. Painted surfaces or plastic parts will be damaged.

OVERFLOW FILTER

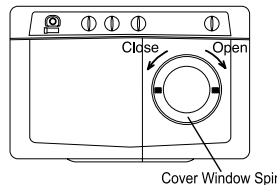
Pull the upper side of the overflow filter with two fingers into the hole 'A' in the direction of arrow as shown in the figure.



CLEANING THE COVER WINDOW SPIN

1. Rotate the cover window spin clockwise and pull out.
2. Cleaning the cover window spin.
3. Insert the cover window spin back and rotate it counterclockwise until locks in position.

Remark : Should be cleaned the cover window spin at least 1 time a month.



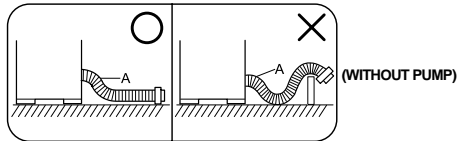
Cover Window Spin

WASHING PROCEDURE

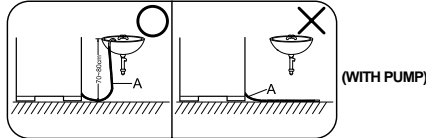
TO WASH

1. Before starting washing, check the following;

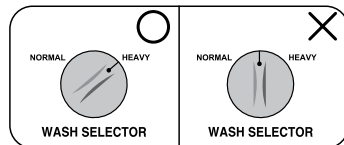
- Connect the water supply hose and open the water tap.
- Connect the power cord to the power supply outlet.
- Lay the drain hose(A) down toward a sinkhole.



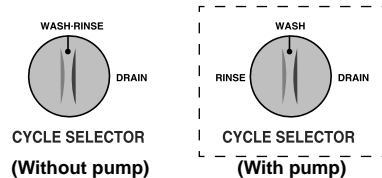
- Place the drain hose(A) in sink or bath about 70~80cm above the ground.



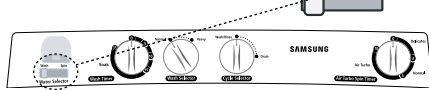
2. Set the WASH SELECTOR KNOB to the desired mode. 'NORMAL or HEAVY'



3. Set the CYCLE SELECTOR KNOB to 'WASH-RINSE'. (In case no drain pump.) ('WASH' In case drain pump.)



4. Set the WATER SELECTOR KNOB to WASH.



5. Put the cloths into the wash tub and set the same water pressure to fill the tub so as not to exceed 'H3' level.



6. Fill water in the wash tub to the "L1" lower water level by carefully adjusting the tap water and add the detergent.



7. Set the WASH TIMER 1-35 minutes.

SOAK

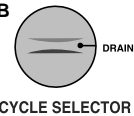
- Set the WASH TIMER to the point more than "15" for SOAK function.



- If the WASH TIMER is set to the point less than "15", it leads to WASH only. (No SOAK)

- If Although the machine may stay still maximum 5 minutes, if the WASH TIMER is indicated over 15 minutes position, it is just in the process of soaking and not a breakdown.

8. After washing, set the CYCLE SELECTOR KNOB to 'DRAIN' for drain.



9. Soak-Washing

1) Place clothes into the WASH TUB.

2) Turn on tap or use bucket to fill the WASH TUB with desired amount of water.

3) Put detergent depending on the water volume and detergent package indications.

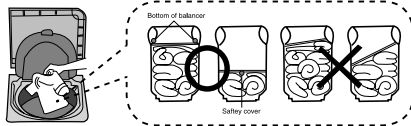
4) Set WASH TIMER to point between "15" to "35" in the timer.

- Soak-Washing automatically starts the wash (15 min.) after the soak (2 to 20 min.) is completed.

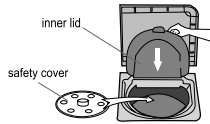
- The SOAK function (20 min.) repeats the cycle that is 1.5 ~ 2.0 min. turning and the next 5 min. resting 3 times.

SPIN DRY

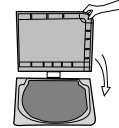
1. Transfer the clothes into the spin basket and arrange the clothes evenly.



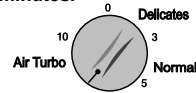
2. Be sure to attach the safety cover and close the inner lid.



3. Close the spin dryer lid.



4. Set the AIR TURBO SPIN TIMER 1-10 minutes.

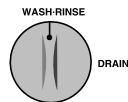


AIR TURBO SPIN TIMER

5. Incomplete spinning. (Severe vibration or unbalance) See "When you load ..." on page 6.

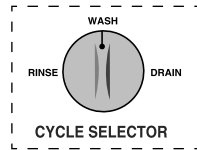
RINSING

1. Set the CYCLE SELECTOR KNOB to 'WASH-RINSE'. (In case no drain pump.) ('WASH' In case drain pump.)



CYCLE SELECTOR

(Without pump)

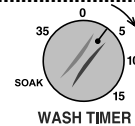


CYCLE SELECTOR

(With pump)

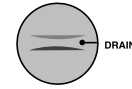
2. Supply the proper amount of water as not to overflow the top of the washing tub.

3. Set the WASH TIMER 2-3 minutes.



WASH TIMER

4. Drain the water. Set the CYCLE SELECTOR KNOB to 'DRAIN'.



CYCLE SELECTOR

5. Repeat this cycle until drain water is clean. (2-3 cycles)

6. In case no drain pump.
 - Be sure lay the drain hose down.
 - Be sure place the drain hose in sink or bath.

OVER FLOW RINSE

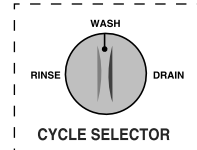
1. Keep supplying water

Adjust water pressure to ensure that the amount of water supplied does not exceed that water drained.



CYCLE SELECTOR

(Without pump)



CYCLE SELECTOR

(With pump)

2. Set the WASH TIMER 6-8 minutes.



WASH TIMER

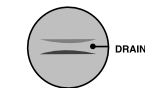
3. As soon as the WASH TIMER shuts off, turn off the water tap.



WASH TIMER



4. Set the CYCLE SELECTOR KNOB to 'DRAIN'.

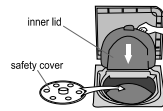


CYCLE SELECTOR

ADDITIONAL RINSE

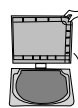
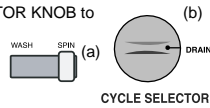
After rinsing you can select this course for more effective rinse (Don't select only this course for rinse.)

- 1** Load the laundry evenly into the spin basket.



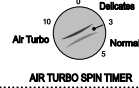
- 4** After stopping water supply, cover the laundry with safety cover and close the inner lid.

- 2** Set the WATER SELECTOR KNOB to SPIN (a) and CYCLE SELECTOR KNOB to 'DRAIN'. (b)



- 5** Close the spin dryer lid.

- 3** Supply water for about 1 minute. Adjust the water flow to prevent overflow from the wash tub.



- 6** Set the AIR TURBO SPIN TIMER 2-3 minutes.

LAUNDRY GUIDE

AMOUNT OF CLOTHES

Water Level	Low	Middle	High
Shirts(Synthetics)	22 Pieces	29 Pieces	35 Pieces
Under Shirts(Cotton)	38 Pieces	48 Pieces	58 Pieces
Working clothes(Cotton)	16 Pieces	20 Pieces	25 Pieces

DETERGENT

AMOUNT OF DETERGENT	WATER LEVEL
44 g	Low (44l)
56 g	Middle (56l)
67 g	High (67l)

- The amount of detergent is average. Follow the instruction detergent printed on the package for amount of detergent.
- Choose the amount of detergent depending on the fabric type.

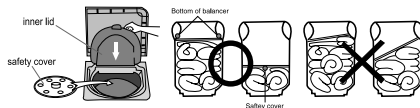
SPIN DRY TIME

TIME	TYPE OF LAUNDRY
1min.	Thin(synthetic fiber)
1-2min.	wool
3-5min.	cotton
5min.	thick(cotton)
10min.(Air Turbo)	thick(cotton)

MAINTENANCE

WHEN YOU LOAD THE LAUNDRY INTO THE SPIN BASKET.

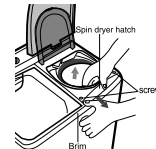
Press the laundry evenly and put the safety cover into the spin basket drum as shown in the figure.



TO PICK OUT THE CLOTHING WHICH HAS FALLEN BETWEEN THE BASKET AND TUB.

For safety, pull the power supply plug out of the socket.

1. Disassemble two screws from the spin dryer hatch.
2. Pull up the spin dryer hatch to remove it.
3. Remove the clothing
4. Close the spin dryer hatch.



TROUBLE SHOOTING

TROUBLE	CHECK POINT	TROUBLE	CHECK POINT
1. The washer does not work.	Check that the power cord is connected to a power outlet well. Power stoppage?	4. Water dose not drain.	In case no drain pump. - Be sure lay the drain hose down. In case drain pump. - Be sure remove the cap-hose from the drain hole. ☞ See "Before using..." on page 1.
2. Clothes will not move freely.	Is the laundry overloaded?	5. The spin dryer basket will not run.	Is the spin dryer lid closed completely? Are laundry(socks,etc.)falling out of the spin dryer basket and clinging to the axle? ☞ See "To pick out..." on page 6.
3. Incomplete spinning. (Severe vibration or unbalance.	Are the laundry arranged evenly? ☞ See "When you load..." on page 6.	6. The water drains out immediately.	In case no drain pump. - Is the Cycle Selector set to drain? - Is the drain hose clogged with scrap? ☞ Hang up drain hose over the drain hose hook. Half fill the wash tub with the water and try for drain again.(Scrab will be removed by water drain pressure.) In case drain pump. - Is the drain hose hung about 70~80 cm above the ground? ☞ See "Connecting the drain..." on page 3.

SPECIFICATION

DIMENSIONS (mm)	W820mm x D524mm x H1000mm		
WATER PRESSURE	0.05~0.78 MPa 0.5 ~ 8.0 kg-f/cm ²		
WEIGHT	36 kg		
EXTRACTION EFFICIENCY	50 %		
STANDARD QUANTITY OF WATER	Low : 44 l	Middle : 56 l	High : 67 l
RATING TIME	Washing 1Hour	Spinning 15minutes	

Contact SAMSUNG WORLD WIDE

If you have any questions or comments relating to Samsung products, please contact the SAMSUNG customer care center.

Country	Customer Care Center ☎	Web Site
AUSTRALIA	1300 362 603	www.samsung.com/au
INDIA	3030 8282, 1600 1100 11	www.samsung.com/in
MALAYSIA	1800-88-9999	www.samsung.com/my
PHILIPPINES	1800-10-SAMSUNG (7267864)	www.samsung.com/ph
RUSSIA	8-800-200-0400	www.samsung.ru
SINGAPORE	1800-SAMSUNG (7267864)	www.samsung.com/sg
SOUTH AFRICA	0860 7267864 (SAMSUNG)	www.samsung.com/za
VIETNAM	1 800 588 889	www.samsung.com/vn