



SC12H70**H Series

Vacuum Cleaner user manual

- * Please read the User Manual thoroughly before operating the vacuum.
- * For indoor use only.

English

imagine the possibilities

Thank you for purchasing a Samsung product.

SAMSUNG

Contents

YOUR VACUUM CLEANER

6

BEFORE USING THE VACUUM CLEANER

7

- 7 Assembly
- 8 Installing the Dust Sensor (Option)
- 8 Using accessory

OPERATING CLEANER

10

- 10 Power cord
- 10 Check filter
- 10 ON/OFF
- 11 Power control
- 12 Dust Sensor (Option)

MAINTENANCE

13

- 13 Cleaning the dust bin and grille
- 16 Cleaning the outlet filter

TROUBLESHOOTING

19

Safety information

SAFETY INFORMATION



- Before operating the appliance, please read this manual thoroughly and retain it for your reference.



- Because the following operating instructions cover various models, the characteristics of your vacuum cleaner may differ slightly from those described in this manual.

CAUTION/WARNING SYMBOLS USED

	Indicates that a risk of death or serious injury exists.
	Indicates that a risk of personal injury or material damage exists.

OTHER SYMBOLS USED

	Represents something you must NOT do.
	Represents something you must follow.
	Indicates that you must disconnect the power plug from the socket.



This vacuum cleaner is designed for household use only.

Do not use this vacuum cleaner to clean building waste or debris.

Regularly keep the filters in clean conditions to prevent of collecting fine dust in them.

Do not use this vacuum cleaner with any of the filters removed.

Failure to meet these requirements could cause injury, damage the vacuum cleaner and void your warranty.

IMPORTANT SAFEGUARDS

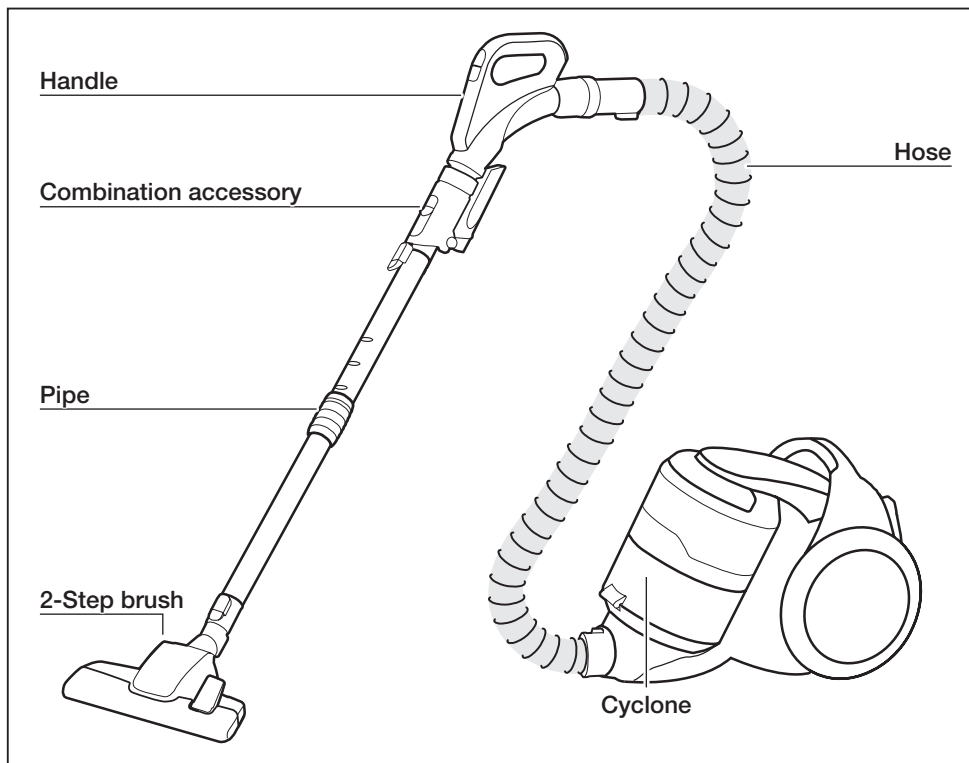
GENERAL

- Read all instructions carefully. Before switching on, make sure that the voltage of your electricity supply is the same as that indicated on the rating plate on the bottom of the cleaner.
- **WARNING** : Do not use the vacuum cleaner when rug or floor is wet. Do not use to suck up water.
- Close supervision is necessary when any appliance is used by or near children. Do not allow the vacuum cleaner to be used as a toy. Do not allow the vacuum cleaner to run unattended at any time. Use the vacuum cleaner only for its intended use as described in these instructions.
- Do not use the vacuum cleaner without a dust bin.
Empty the dust bin before it is full in order to maintain the best efficiency.
- Do not use the vacuum cleaner to pick up matches, live ashes or cigarette butts. Keep the vacuum cleaner away from stoves and other heat sources. Heat can deform and discolour the plastic parts of the unit.
- Avoid picking up hard, sharp objects with the vacuum cleaner as they may damage the cleaner parts.
Do not stand on the hose assembly.
Do not put weight on the hose.
Do not block the suction or the exhaust port.
- Switch the vacuum cleaner off on the body of the machine before unplugging from the electrical outlet. Disconnect the plug from the electrical outlet before emptying the dust bin.
To avoid damage, please remove the plug by grasping the plug itself, not by pulling on the cord.
- This appliance can be used by children aged from 8 years and above and people with reduced physical, sensory or mental capabilities or lack of experience and knowledge if they have been given supervision or instruction concerning use of the appliance in a safe way and understand the hazards involved.

Children shall not play with the appliance. Cleaning and user maintenance shall not be done by children without supervision.

- Children should be supervised to ensure that they do not play with the appliance.
- The plug must be removed from the socket outlet before cleaning or maintaining the appliance.
- The use of an extension cord is not recommended.
- If your vacuum cleaner is not operating correctly, switch off the power supply and consult an authorized service agent.
- If the supply cord is damaged, it must be replaced by the manufacturer or its service agent or a similarly qualified person in order to avoid a hazard.
- Don't carry the vacuum cleaner by holding the hose.
Use the handle on the vacuum cleaner set.
- Unplug the cleaner when not in use.
Turn off the power switch before unplugging.

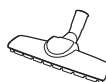
Your vacuum cleaner



OPTION (Depending on model) *



Power pet plus *



Parquet master *



Mini turbo *



Cover battery *

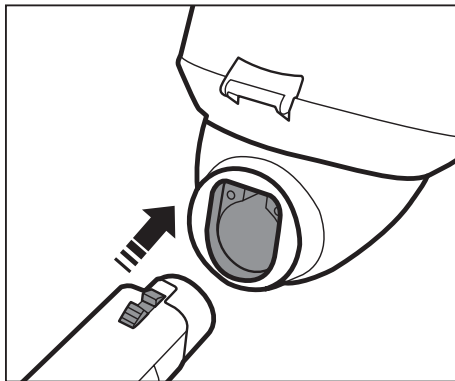


Dust sensor *

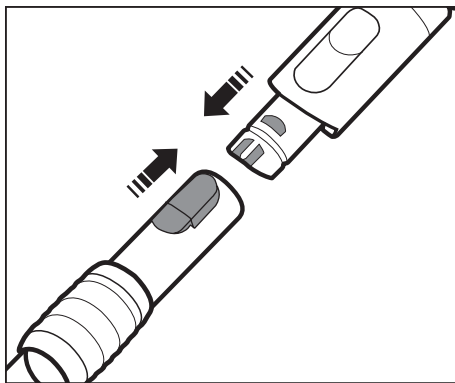
Before using the vacuum cleaner

ASSEMBLY

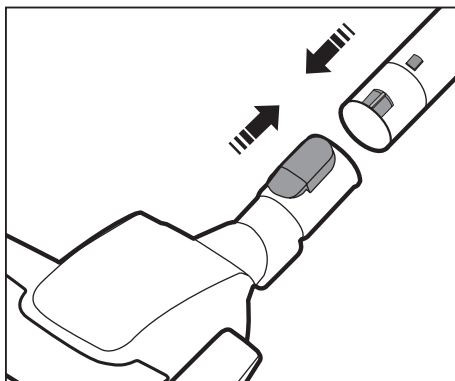
Connecting the Hose



Connecting the handle and pipe



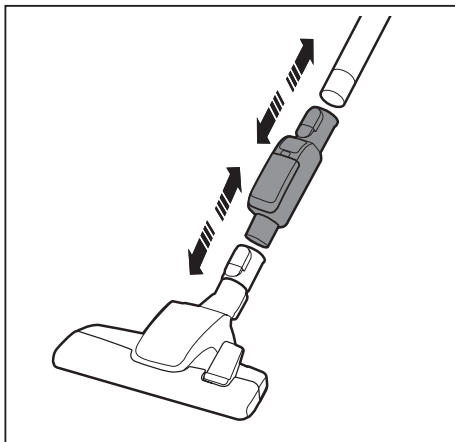
Connecting the brush



INSTALLING THE DUST SENSOR (OPTION)

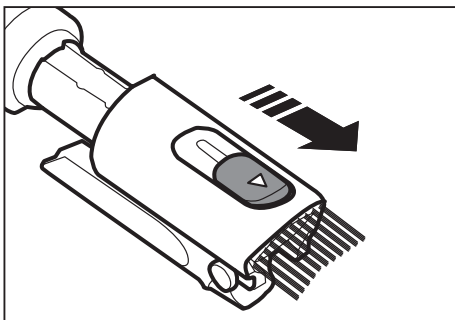
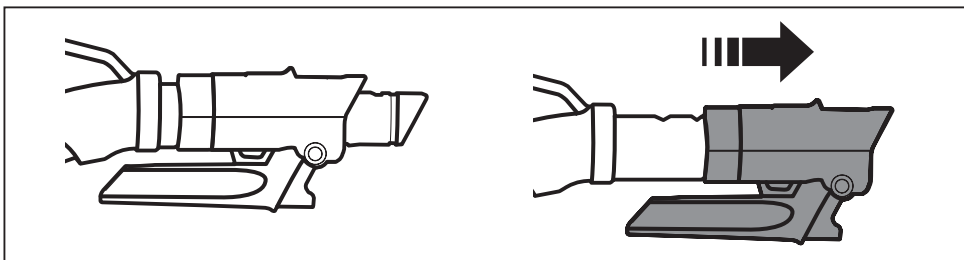
Assemble the dust sensor

between the brush and the pipe
between the pipe and the hose

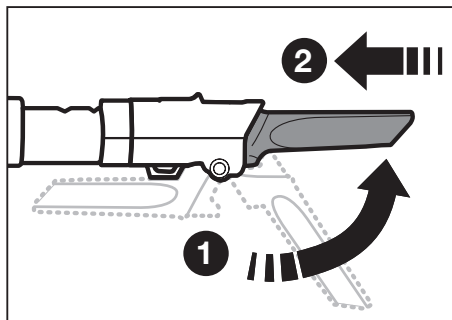


USING ACCESSORY

Combination accessory (Option)



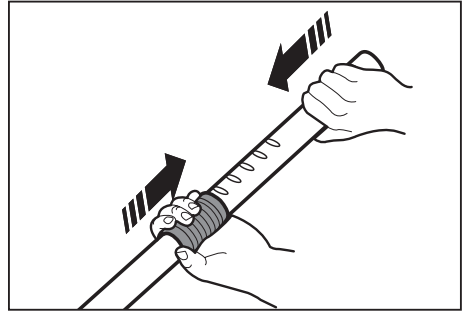
Dusting brush



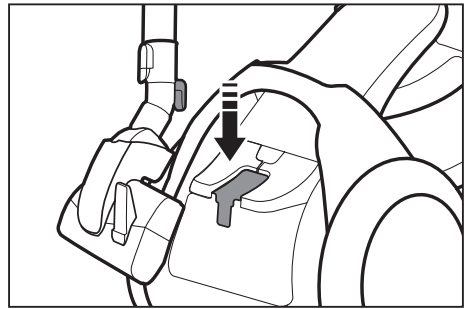
Crevice tool

Pipe

Adjust the length of the pipe by sliding the length control button located in the center of the telescopic pipe.

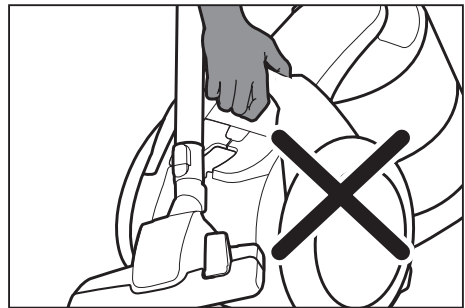


For storage, park the floor nozzle



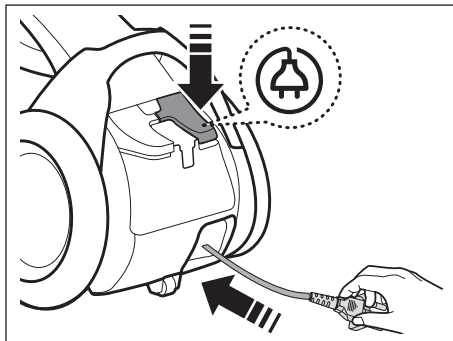
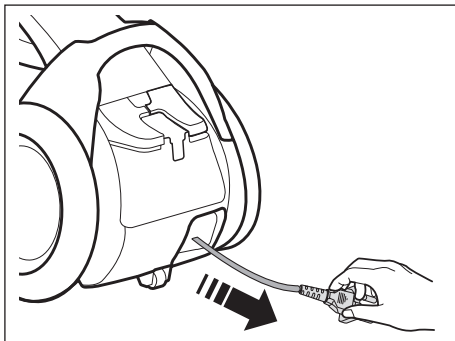
CAUTION

Do not pick up a machine while the floor nozzle parked.

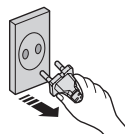


Operating cleaner

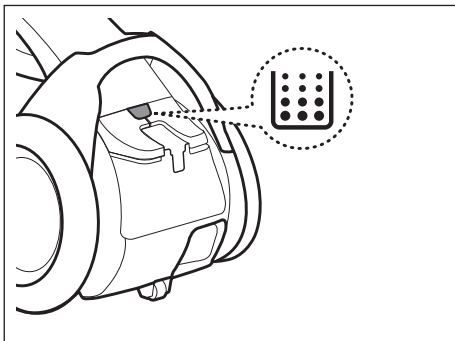
POWER CORD



When removing the plug from the electrical outlet, grasp the plug, not the cord.

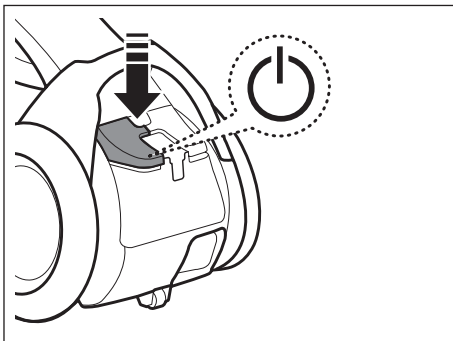


CHECK FILTER



The filter light is illuminated when the dust pack requires checking or emptying.

ON/OFF



POWER CONTROL

Hose (controlled by radio frequency signals)



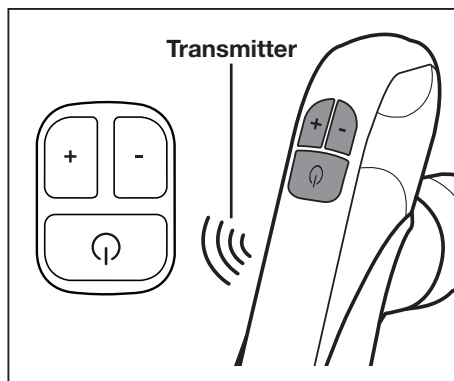
ON/OFF




Select a higher power



Select a lower power



- Don't cover the handle transmitter when you use a handle control.
- If no button is pressed for 30 minutes while cleaning, the power will shut off as a precaution. If this happens, press the  button on the main unit or replug the power cord in again.

DUST SENSOR (OPTION)

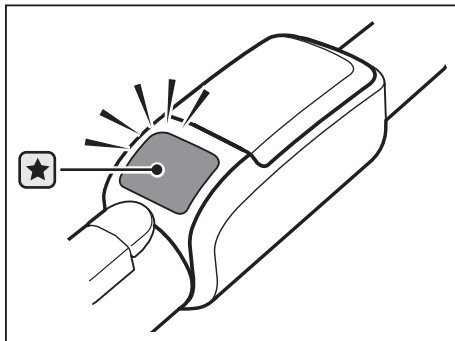
Dust Sensor Operations

- Indicates the amount of dust being picked up and passing by the sensor which assist the user to clean more efficiently.
- The dust sensor is activated automatically when the cleaner runs and is turned off when the cleaner is stopped.



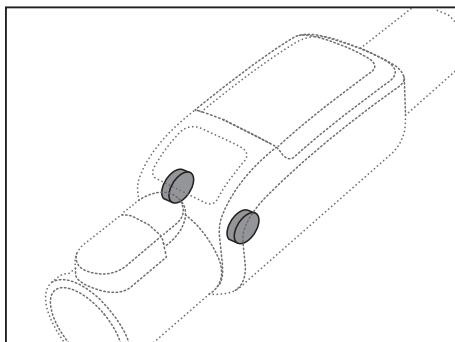
Green : Amount of dust passing sensor is small.

Red : Amount of dust passing sensor is large.



If the red light does not light up when cleaning a dusty location

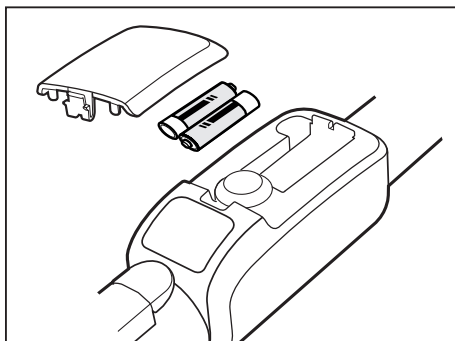
- Clean the sensors (2EA) with a dry cloth.
- Take care when you use the cleaner because the dust sensor may malfunction or may break due to an impact.



Installing the Batteries


If the dust sensor does not work, change the batteries.

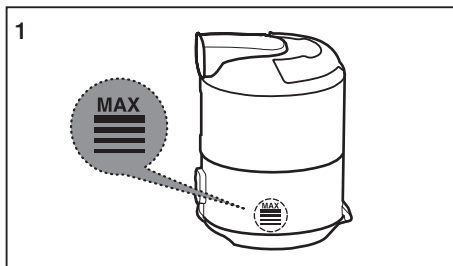
BATTERY TYPE : AAA Size 



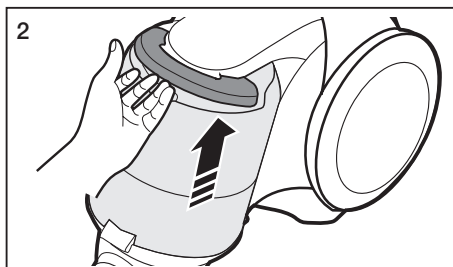
Maintenance

CLEANING THE DUST BIN AND GRILLE

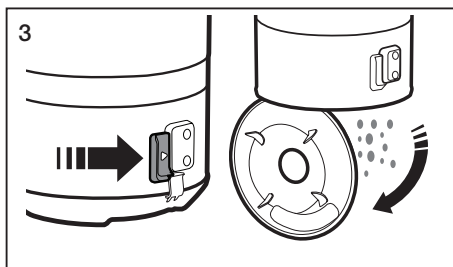
Empty the dust bin, if dust reaches 'MAX' or Check filter () light is illuminating.



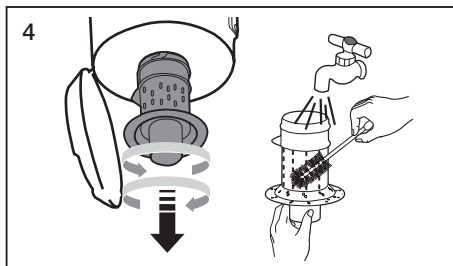
Take the dust bin out by lifting the handle.



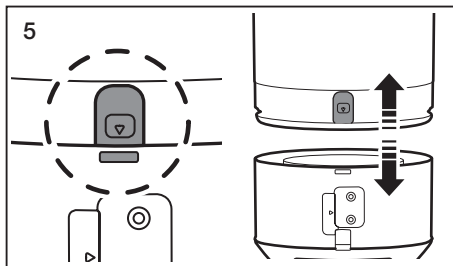
Push the button aside.



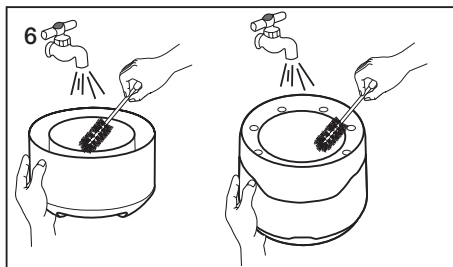
Turn the grille and take out it.



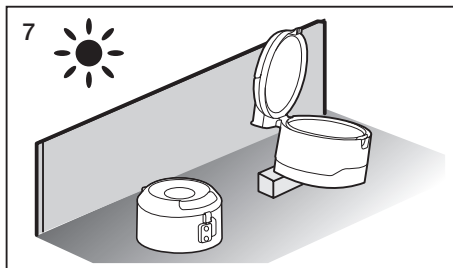
Push the button.
Separate the dust bin from body.



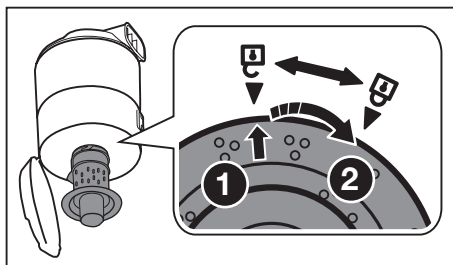
Clean the dust bin and body with water.



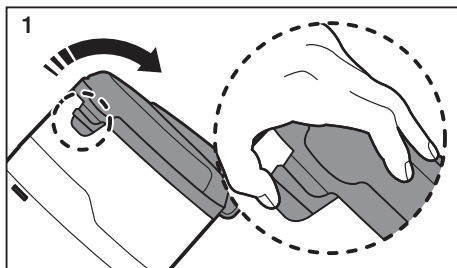
Leave the dust bin and body in the shade
until completely dry.



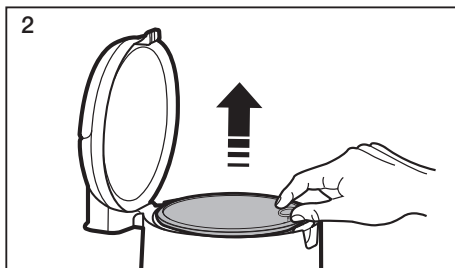
Install the grille and turn to clockwise.



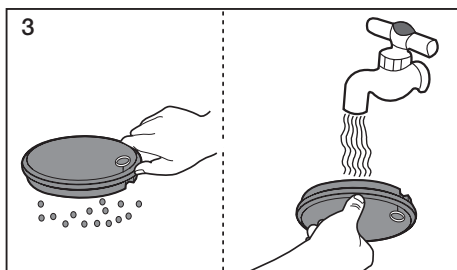
CLEANING THE DUST FILTER



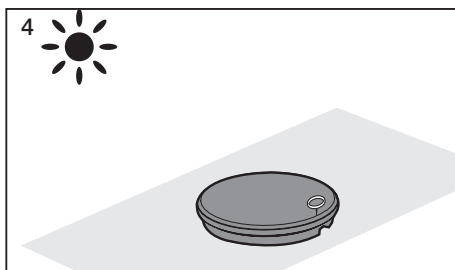
Pull the dust bin cover to open.



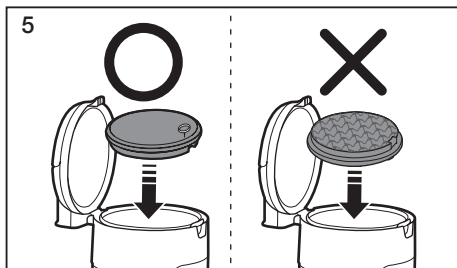
Remove the filter from the dust bin.



Shake the filter to remove dust, then wash the filter.



Let the filter dry for more than 12 hours.



Put the filter into the dust bin.



Make sure the filter is completely dry before putting it back into the vacuum cleaner. Allow 12 hours for it to dry.

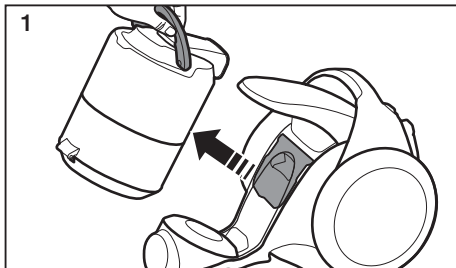
Do not use wet filter.

Replace the dust filter if it becomes damaged or deformed.

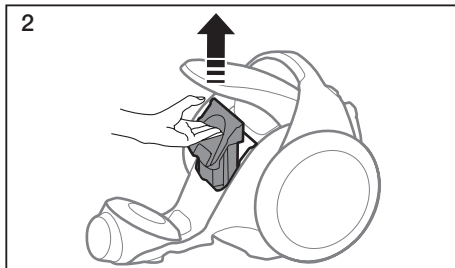
The dust bin cover will not close if the filter is not installed correctly.



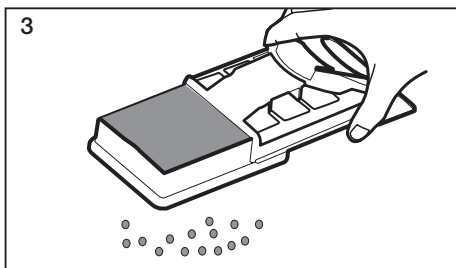
CLEANING THE OUTLET FILTER



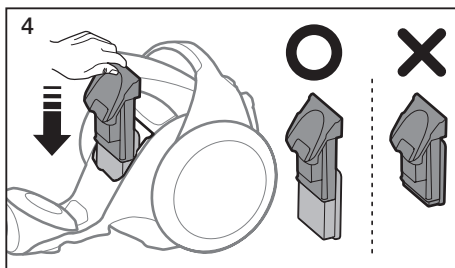
Take the dust bin out by lifting the handle.



Pull out the HEPA Filter.



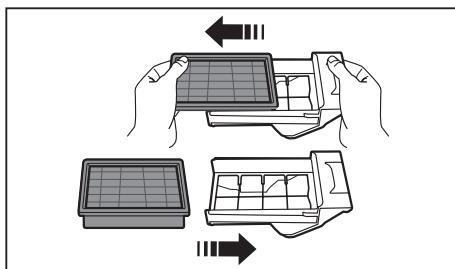
Shake the HEPA Filter to clean.



Install the filter and holder in main body.



- The filter can be replaced and separated from holder by pulling.



- Clean the outlet filter when suction is noticeably reduced continuously or the vacuum cleaner abnormal overheads.
Note: HEPA Filters are not washable.
Replace filter if cleaning does not resolve the problem.
- Recommend that HEPA Filter should be changed once in 6 month.

2-Step Brush

- Adjust the inlet lever according to the floor surface.

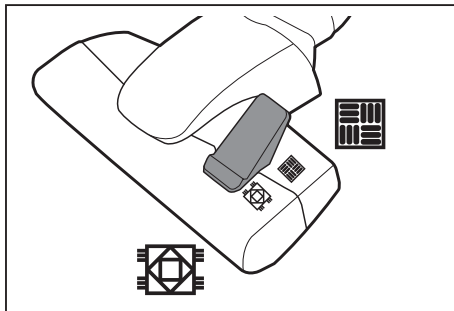


Floor

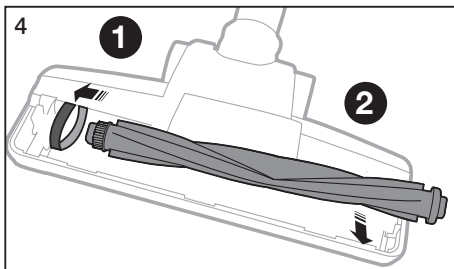
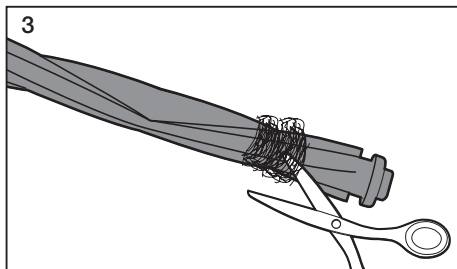
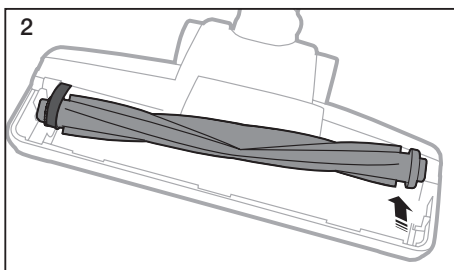
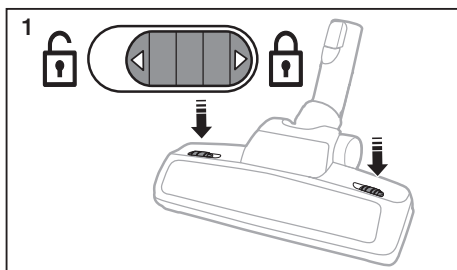


Carpet

- Remove waste matter completely if the inlet is blocked.



Power Turbo Plus Brush (Optional Accessory)

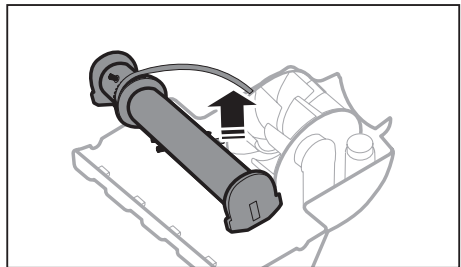
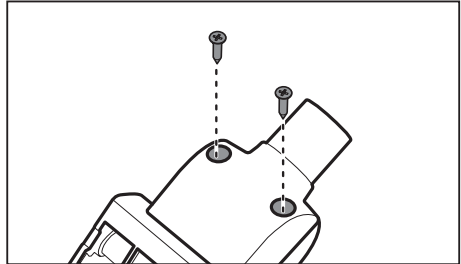


Frequent vacuuming of hair or pet fur may reduce cleaning effectiveness over time due to matters tangled around the drum. In this case, clean the drum with care.

Mini turbo brush (Optional Accessory)

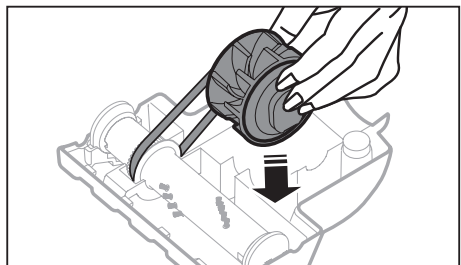
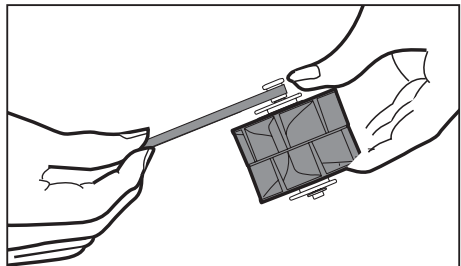
- To check brushroll

- ★ Check brushroll, when a clog is present or debris is visible.



- To check belt

- ★ Inspect belt to ensure that it is in good condition.
If belt is broken or cracked, replace belt according to instructions.



Troubleshooting

PROBLEM	SOLUTION
Motor does not start.	<ul style="list-style-type: none">• Check cable, plug and socket.• Leave to cool.
Suction force is gradually decreasing.	<ul style="list-style-type: none">• Check for blockage and remove.• Please unclog the intake.
In operation, the vacuum cleaner stops after repeating runs and stops three times.	
Cord does not rewind fully.	<ul style="list-style-type: none">• Pull the cord out 2-3 m and push down the cord rewind button.
Vacuum cleaner does not pick up dirt.	<ul style="list-style-type: none">• Check hose and replace if required.
Low or decreasing suction.	<ul style="list-style-type: none">• Please check filter and, if required, clean as illustrated in the instructions. if filters are out of condition change them to new ones.
Body overheating.	<ul style="list-style-type: none">• Please check filters, if required clean as illustrated in the instruction.
Static electricity discharge.	<ul style="list-style-type: none">• Please decrease power suction.• This can also occur when air in the room is very dry. Please ventilate the room till air humidity becomes normal.
The vacuum cleaner makes a strange noise.	<ul style="list-style-type: none">• In order to protect the motor in the cleaner, it rotates slowly when you just turn on the cleaner. (Before the motor stabilizes,) this causes the loud noise at the initial state and it is not failure in the machine.



If you have any questions or comments relating to Samsung products, please contact the SAMSUNG customer care center.

COUNTRY	CUSTOMER CARE CENTER	WEB SITE
AUSTRALIA	1300 362 603	www.samsung.com/au
HONG KONG	3698-4698	www.samsung.com/hk www.samsung.com/hk_en
MALAYSIA	1800-88-9999	www.samsung.com/my
SINGAPORE	1800-SAMSUNG(7267864)	www.samsung.com/sg



DJ68-00721F-01