



SC21F60* SERIES
SC07F60* SERIES

Vacuum Cleaner user manual

- * Before operating this unit, please read the instructions carefully.
- * For indoor use only.

English

imagine the possibilities

Thank you for purchasing a Samsung product.

To receive a more complete service,
please register your product at
www.samsung.com/register

SAMSUNG

safety information

SAFETY INFORMATION



- Before operating the appliance, please read this manual thoroughly and retain it for your reference.



- Because these following operating instructions cover various models, the characteristics of your vacuum cleaner may differ slightly from those described in this manual.

CAUTION/WARNING SYMBOLS USED

	Indicates that a danger of death or serious injury exists.
	Indicates that a risk of personal injury or material damage exists.

OTHER SYMBOLS USED

	Represents something you must NOT do.
	Represents something you must follow.
	Indicates that you must disconnect the power plug from the socket.



- This vacuum cleaner is designed for domestic household use only.
Do not use this vacuum cleaner to clean building waste and debris.
Regularly keep the filters in clean conditions to prevent of collecting fine dust in them.
Do not use this vacuum cleaner with any of the filters removed.
Failure to meet these requirements could cause damage to the internal parts and void your warranty.

safety information

IMPORTANT SAFEGUARDS

GENERAL

- Read all instructions carefully.
Before switching on, make sure that the voltage of your electricity supply is the same as that indicated on the rating plate on the bottom of the cleaner.
- **WARNING :** Do not use the vacuum cleaner when rug or floor is wet. Do not use to suck up water.
- Close supervision is necessary when any appliance is used by or near children.
Do not allow the vacuum cleaner to be used as a toy.
Do not allow the vacuum cleaner to run unattended at any time.
Use the vacuum cleaner only for its intended use as described in these instructions.
- Do not use the vacuum cleaner without a dust bin.
Empty the dust bin before it is full in order to maintain the best efficiency.
- Do not use the vacuum cleaner to pick up matches, live ashes or cigarette butts. Keep the vacuum cleaner away from stoves and other heat sources.
Heat can deform and discolour the plastic parts of the unit.
- Avoid picking up hard, sharp objects with the vacuum cleaner as they may damage the cleaner parts.
Do not stand on the hose assembly.
Do not put weight on the hose.
Do not block the suction or the exhaust port.
- Switch the vacuum cleaner off on the body of the machine before unplugging from the electrical outlet.
Disconnect the plug from the electrical outlet before emptying the dust bin.
To avoid damage, please remove the plug by grasping the plug itself, not by pulling on the cord.

- This appliance can be used by children aged from 8 years and above and persons with reduced physical, sensory or mental capabilities or lack of experience and knowledge if they have been given supervision or instruction concerning use of the appliance in a safe way and understand the hazards involved. Children shall not play with the appliance.
Cleaning and user maintenance shall not be made by children without supervision.
- Children should be supervised to ensure that they do not play with the appliance.
- The plug must be removed from the socket outlet before cleaning or maintaining the appliance.
- The use of an extension cord is not recommended.
- If your vacuum cleaner is not operating correctly, switch off the power supply and consult an authorized service agent.
- If the supply cord is damaged, it must be replaced by the manufacturer or its service agent or a similarly qualified person in order to avoid a hazard.
- Don't carry the vacuum cleaner by holding the hose.
Use the handle on the vacuum cleaner set.
- Unplug the cleaner when not in use.
Turn off the power switch before unplugging.

UV BRUSH

- Since the UV rays from the UV Brush damage skin and eyes, never allow the rays to make contact with skin or eyes and do not let children or the elderly use the UV Brush.
It may damage your eyesight.
- If the transparent window is broken and the UV rays are exposed directly, turn the power off and contact the service center.
- Do not use the UV Brush for purposes other than the sterilization of mattresses, bedclothes, beds, cushions and so on made from material.
The company will not be held liable for any loss due to accidents from using the UV Brush for purposes other than its original purpose as listed above.

- Do not sit on the UV Brush or drop it, and avoid imparting impacts on the product.
Failing to do so may result in injury or product damage.
- Do not touch the power terminals on the back of the UV Brush with a metal pin or rod.
This may result in electric shock or fire.
- When the UV lamp is out of order, never disassemble or modify the product yourself. Please contact the manufacturer or service center for a replacement.
- Since an internal discharge occurs within the UV Brush, never use the product near an inflammable spray or substance.
- Take care not to touch the UV lamp window after using the UV Brush for an extended period of time as the surface of the window may be hot.
- The UV Brush may start slowly at a low temperature due to the inherent characteristics of UV lamps.
Please keep the UV Brush indoors.

contents

ASSEMBLING THE CLEANER

07

OPERATING THE CLEANER

08

- 08 Power cord
- 08 ON/OFF Switch
- 09 Power control
- 11 Using the UV brush (SC21F60Y Series)

MAINTAIN TOOLS AND FILTER

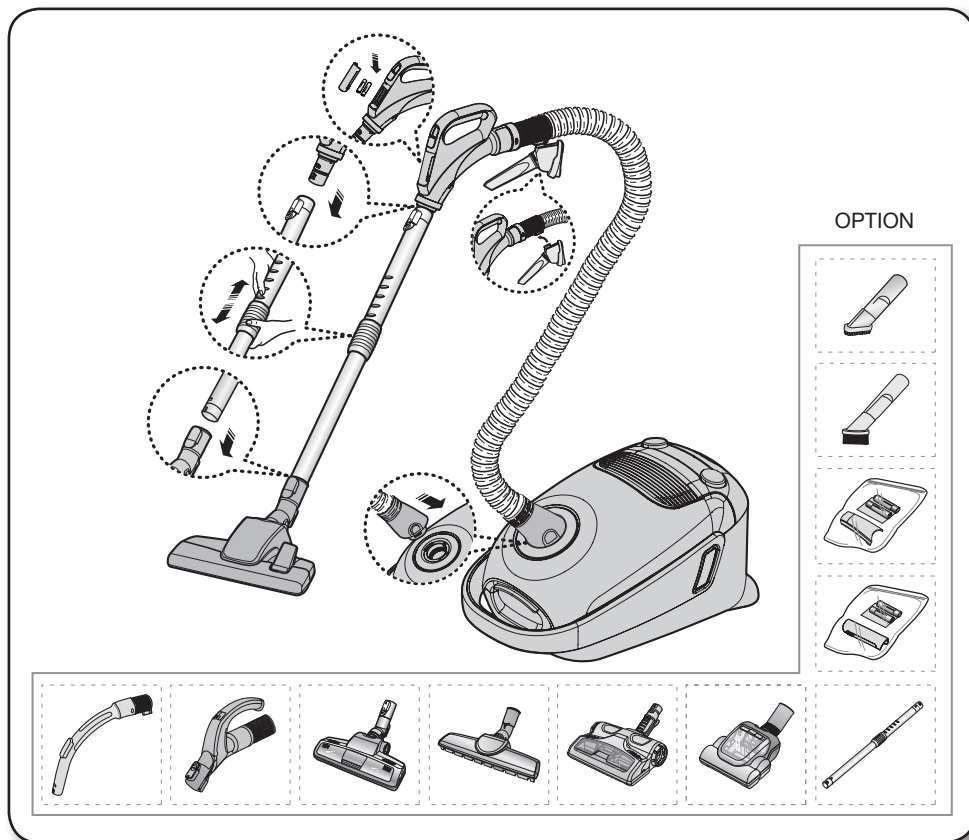
12

- 12 Using accessory
- 14 Maintain floor tools
- 17 Dust full indicator
- 17 Changing the dust bag
- 17 Cleaning inlet filter
- 18 Cleaning outlet filter
- 18 Change the battery (remote-control type)

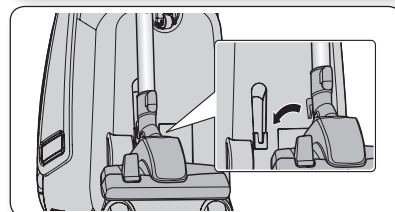
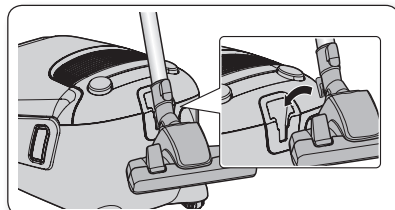
TROUBLESHOOTING

19

assembling the cleaner

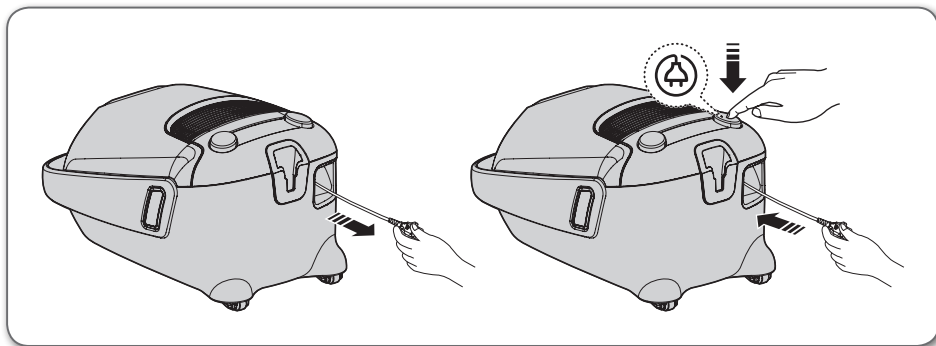


- For storage, park the floor nozzle.

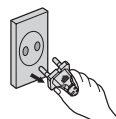


operating the cleaner

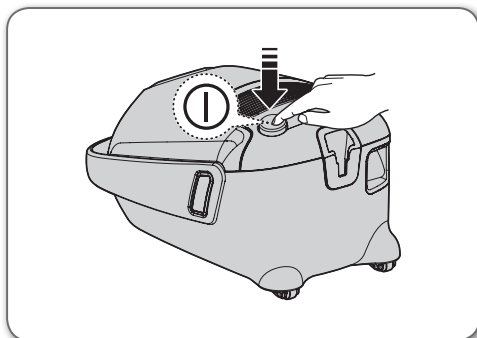
POWER CORD



- When removing the plug from the electrical outlet, grasp the plug, not the cord.




ON/OFF SWITCH



POWER CONTROL

Remote-control type (SC21F60J, SC21F60Y Series)

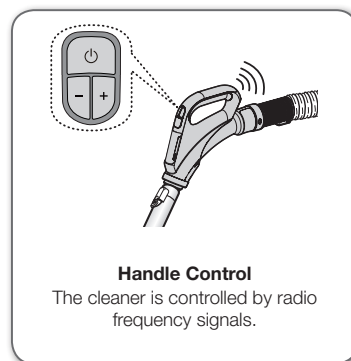
HOSE (SC21F60J Series)

1. ON/OFF () Button
 - Press the ON/OFF button to operate the vacuum cleaner. Press again to stop the vacuum cleaner.
2. Suction (-), (+) Button
 - Press the (+) button to operate the vacuum to high suction power. Press the (-) button to operate the vacuum to low suction power.

(ON) MIN → MID → MAX




If no button is pressed for 30 minutes while cleaning, the safety device is activated and the power is cut off. In this case, press the [Power] button on the main unit or unplug and then plug the power cord in again.



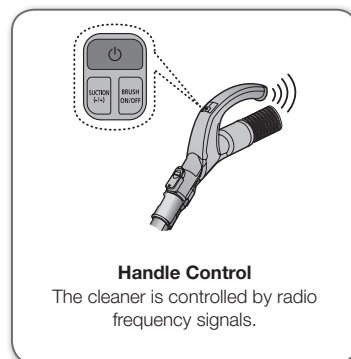
Handle Control

The cleaner is controlled by radio frequency signals.

HOSE (SC21F60Y Series)

1. ON/OFF () Button
 - Press the ON/OFF button to operate the vacuum cleaner. Press again to stop the vacuum cleaner.
2. SUCTION (-/+) Button
 - Press the [SUCTION (-/+)] button to increase or decrease the suction power. Each time you press the button, you gradually increase the suction power. After the suction power reaches its maximum, the next time you press the button, you return the suction power to its minimum.

(ON) MIN → MID → MAX



Handle Control

The cleaner is controlled by radio frequency signals.

3. BRUSH ON/OFF Button
 - Press the [BRUSH ON/OFF] button to operate the UV Brush. Press again to stop the UV Brush.



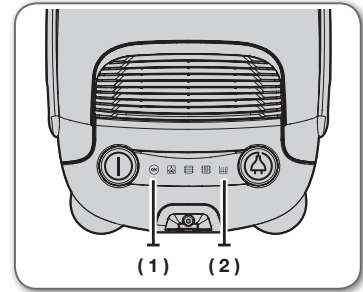
If no button is pressed for 30 minutes while cleaning, the safety device is activated and the power is cut off. In this case, press the [Power] button on the main unit or unplug and then plug the power cord in again.

BODY

Press the power ON/OFF button repeatedly to start and to stop the vacuum cleaner. (OFF → ON → OFF)



If the remote handle control is not working, the cleaner can be operated using the ON/OFF button on the body of the machine.



(1)



The icon lights up blue when the power source is connected.

(2)

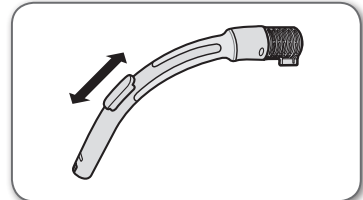


If the filter check indicator turns red, check and eliminate possible blockages in brushes, pipe, hoses, filters and if necessary. Empty and replace dust bag.

Body-control type (SC21F60W Series)

HOSE

To reduce suction for leaning draperies, small rugs, and other light fabrics, pull the tap air until the hole is open.

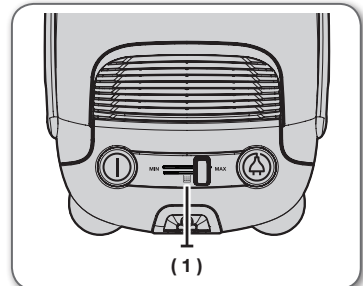


BODY

To control power level, just slide the power control right and left.

MIN = For delicate fabrics, e.g.net curtains.

MAX = For hard floors and heavily soiled carpets.



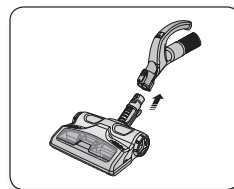
(1)



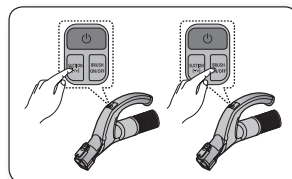
If the filter check indicator turns red, check and eliminate possible blockages in brushes, pipe, hoses, filters and if necessary. Empty and replace dust bag.

USING THE UV BRUSH (SC21F60Y SERIES)

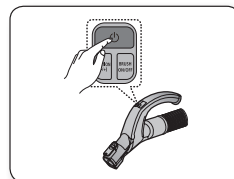
1. Insert the brush into the hose handle.
 - Insert the UV brush securely into the hose handle until you hear a “clicking” sound.



2. Press the [BRUSH ON/OFF] button to use UV Brush.
 - Press the [Suction -/+] button to start cleaning and choose the appropriate suction strength.
 - Press the [BRUSH ON/OFF] button.
 - UV sterilization cannot be activated by itself.



3. When you have finished UV cleaning, press the [⏻] button.
 - Press the [⏻] button to stop the cleaner.
- For safety reasons, UV brushing only runs for 30 minutes and then stops operating. To resume the operation, press the [SUCTION (-/+)] button again.



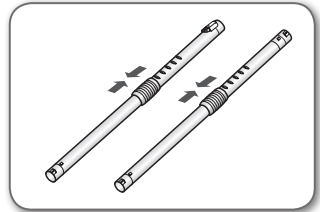
The UV brush, which is inserted into the hose handle (not directly connected to the telescopic pipe), is dedicated for bedclothes.

maintain tools and filter

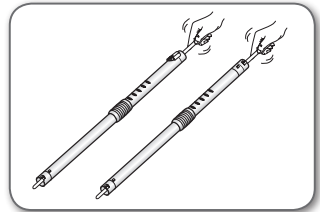
USING ACCESSORY

Pipe

- Adjust the length of the telescopic pipe by sliding the length control button located in the center of the telescopic pipe back and forth.

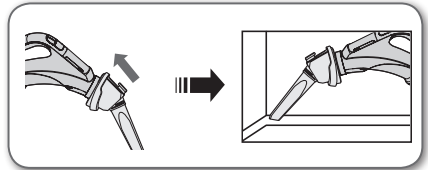


- To check for blockages, separate the telescopic pipe and adjust to shorten. This allows for easier removal of waste clogging the tube.

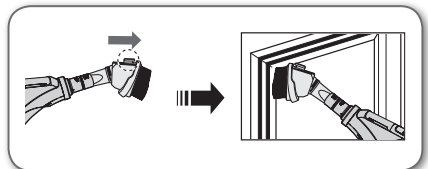


Accessory

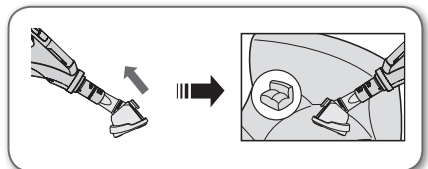
- To use the crevice tool, push the accessory on to the end of the hose handle in the opposite direction.



- Pull out the button, to use the dusting brush.

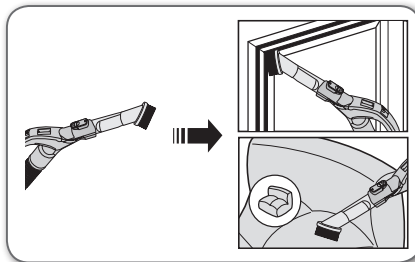


- To use the upholstery tool, push the accessory on to the end of the hose handle.

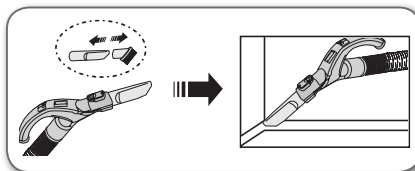


Accessory

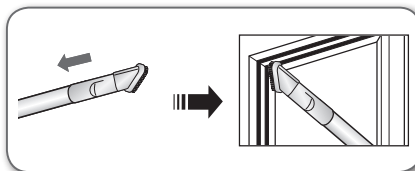
- Push the accessory onto the end of the hose handle.



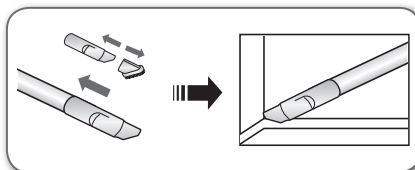
- Pull out the dusting brush to use the crevice tool.



- Push the accessory onto the end of the pipe.



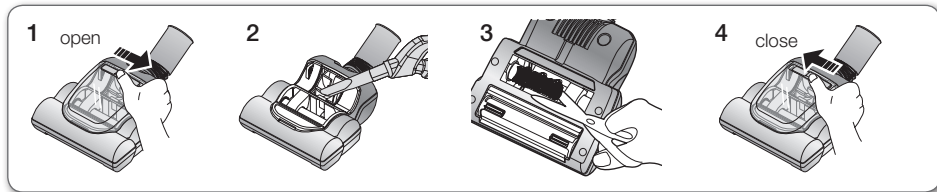
- Pull out the dusting brush to use the crevice tool.



MAINTAIN FLOOR TOOLS

Super turbine brush (Option)

- For improved pickup of pet hair and fibre on carpets.



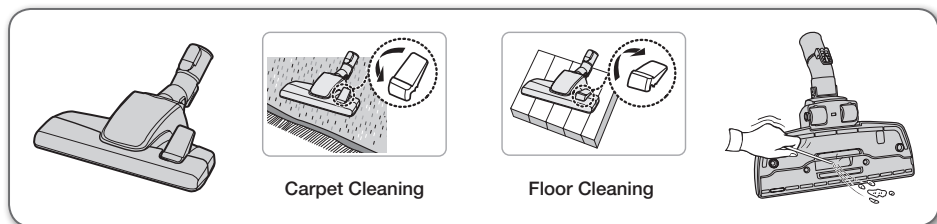
- Frequent vacuuming of hair or pet fur may cause a falling-off of the rotation due to matters tangled around the drum. In this case, clean the drum with care.

1. Click the lever to the arrow direction as shown figure1 and open the cover.
2. Remove dust inside the brush housing using a dry duster or crevice tool.
3. Remove waste matter such as dust and hair tangled around the brushbar using scissors.
4. Click the lever to the arrow direction as shown figure4 and close the cover.



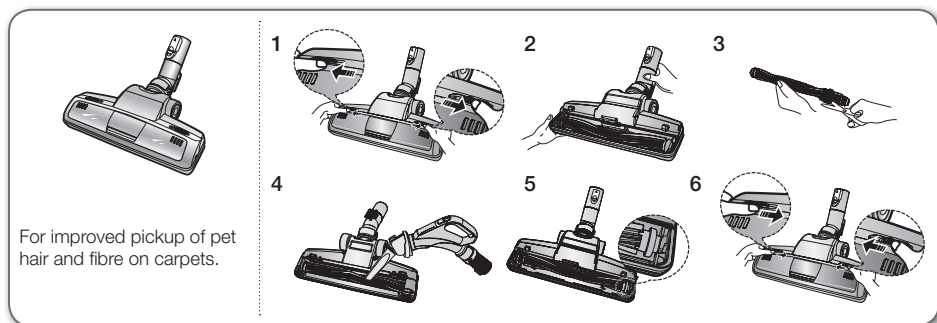
Please be careful not to damage the brush.

2-Step Brush



- Adjust the inlet lever according to the floor surface.
- Remove waste matter completely if the inlet is blocked.

Power Pet Plus Brush (Option)

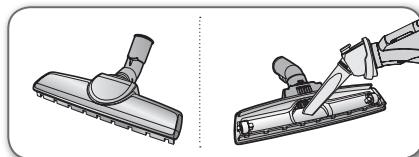


- Frequent vacuuming of hair or pet fur may cause a falling-off of the rotation due to matters tangled around.

1. Push the Open button of the transparent screen cover to separate the cover.
2. Remove the brushbar from the transparent screen.
3. Remove waste matter such as dust and hair tangled around the brushbar using scissors.
4. Remove dust inside the brush housing using a dry duster or crevice tool.
5. Insert brushbar into rotating belt and assemble.
6. Click the transparent screen cover back into place to reassemble.

Parquet Master Brush (Option)

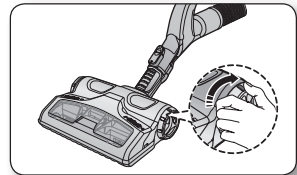
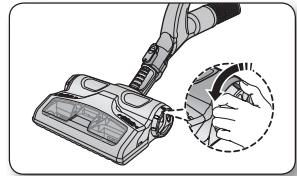
- Vacuum dust in wide area at once.
- Remove waste matter completely if the inlet is blocked.



To remove dust from the dust bin of the UV brush (SC21F60Y Series)

When you notice that the dust bin is filled, use the [Dust Removal] button to empty the dust bin.

1. To remove dust from the dust bin, move the [Dust Removal] button to the "Open" position.
 - While the cleaner is operating (suction), use the [Dust Removal] button for this purpose.
2. When done, move the [Dust Removal] button to the "Close" position.
 - When the [Dust Removal] button is in the "Open" position, the suction power of the cleaner is reduced.

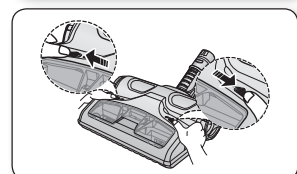
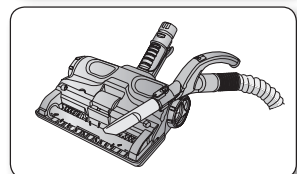
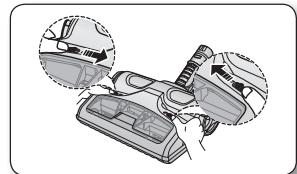


- Frequent vacuuming of hair or pet fur may cause a falling-off of the rotation due to matters tangled around.

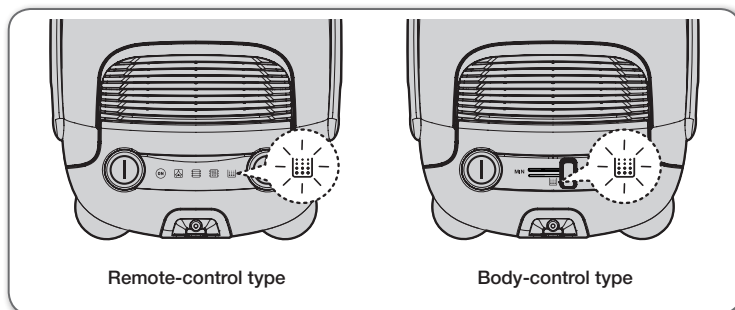
Cleaning the UV brush (Cleaning the drum) (SC21F60Y Series)

You should check your vacuum cleaner's Brush roll regularly. Strings, hair and carpet fibers can wrap around the brush and hamper its ability to clean. To prevent this you should clean the brush.

1. Push the [Open Transparent Cover] button inward to remove the cover.
2. Use the crevice tool to remove impurities such as dust and hair from the brush roll.
3. When done, push the button outward to close the cover.

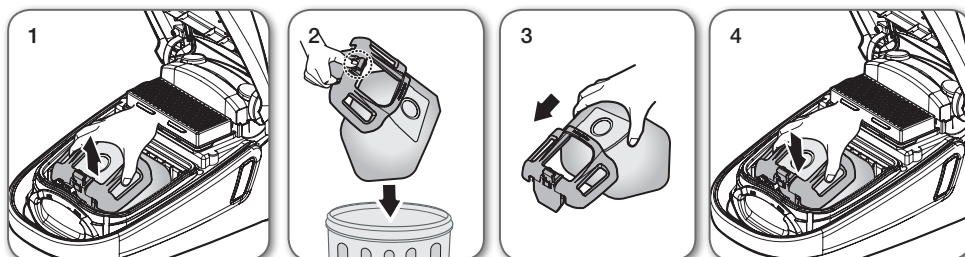


DUST FULL INDICATOR



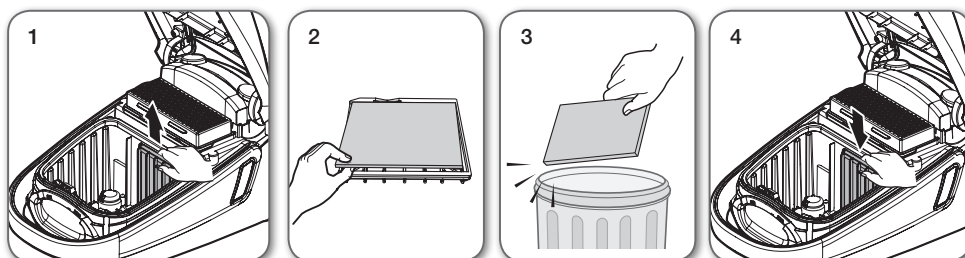
- Frequent vacuuming of hair or pet fur may cause a falling-off of the rotation due to matters tangled around. The lamp will turn red when suction is reduced. If the light comes on, please change the bag.

CHANGING THE DUST BAG



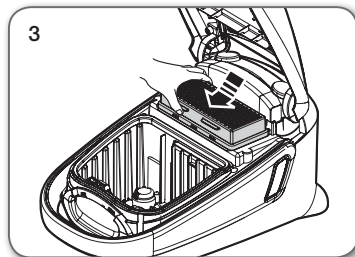
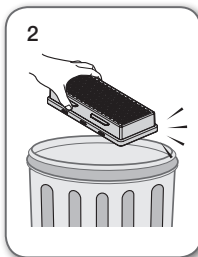
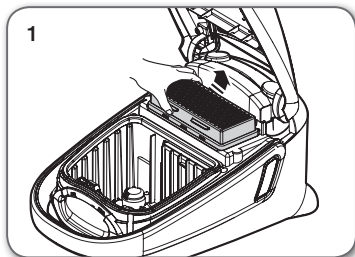
You can purchase dust bags in the shops where you bought this vacuum cleaner or authorized SAMSUNG service center.

CLEANING INLET FILTER



Don't throw away the filter.

CLEANING OUTLET FILTER



- Please replace the filter 1~2 times a year.



- When suction is noticeably reduced continuously or vacuum cleaner abnormally overheats, please clean the outlet filter. Note. Do not wash HEPA filter. If cleaning does not resolve the problem Please replace blocked out filter.
- Replacement filters are available at your local Samsung distributor.

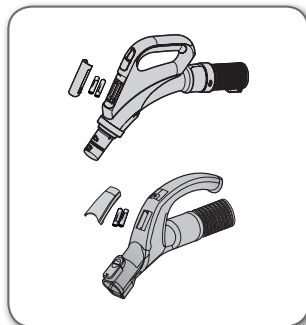
CHANGE THE BATTERY (REMOTE-CONTROL TYPE)



- When the vacuum cleaner does not work, replace the batteries. If the problem persists, please contact our authorized dealer.
- Use 2 batteries of size AAA.



- Never disassemble or recharge the batteries.
- Never heat up the batteries or throw them into fire.
- Do not reverse (+), (-) poles.
- Dispose of the batteries properly.



BATTERY TYPE : AAA Size



troubleshooting

PROBLEM	SOLUTION
Motor does not start.	<ul style="list-style-type: none">• Check cable, plug and socket.• Leave to cool.
Suction force is gradually decreasing.	<ul style="list-style-type: none">• Check for blockage and remove.
Cord does not rewind fully.	<ul style="list-style-type: none">• Pull the cord out 2-3 m and push down the cord rewind button.
Vacuum cleaner does not pick up dirt.	<ul style="list-style-type: none">• Check hose and replace if required.
Low or decreasing suction.	<ul style="list-style-type: none">• Please check filter and, if required, clean as illustrated in the instructions. if filters are out of condition change them to new ones.
Body overheating.	<ul style="list-style-type: none">• Please check filters, if required clean as illustrated in the instruction.
Static electricity discharge.	<ul style="list-style-type: none">• Please decrease power suction.• This can also occur when air in the room is very dry. Please ventilate the room to air humidity become a normal.

This Vacuum cleaner is approved the following.

EMC Directive : 2004/108/EEC

Low Voltage Directive : 2006/95/EC



Code No. DJ68-00698L REV(0.0)