

WA90V3  
WA80V3

# Washing Machine

## user manual

imagine the possibilities

Thank you for purchasing a Samsung product.  
To receive a more complete service,  
please register your product at  
[www.samsung.com/register](http://www.samsung.com/register)



# features

---

- **Air Turbo Drying System**

- Air Turbo technology spins hard and fast so you can spend less time drying.
- Time Saving AIR TURBO saves your time, ensuring your clothes are dried 30%-40% faster than line drying alone. Especially during the rainy season and in high-humid weather, laundry that once took days to drip-dry, such as heavy jeans, bulky sweaters, and thick blankets are dried more rapidly.
- Easy-to-iron AIR TURBO is perfect for delicates and clothes made of synthetic fabrics. No more hanging and waiting. Simply iron straight-out-of-the washer, since AIR TURBO eliminates just enough moisture to keep clothes adequately damp for ironing.

- **Diamond Drum**

- The diamond shaped drum creates a high water pressure, removing dirt from the laundry effectively. The diamond drum minimizes fabric damage extending the lifetime of the fabric. The glittering inner tube is both beautiful and powerful in the wash effect it creates.

- **Fuzzy Control**

- Fuzzy control operates with best washing program by sensing the washload like artificial intelligence.

- **Transparent Window**

- This Transparent Window is the new concept to solve the curiosity of users to see inside of washing machine while operation. While operation, the laundry progress inside of washing machine can be checked by looking through the transparent window.

- **Double Storm Pulsator- Less Tangle, Better Washing Performance**

- Tangle Free - Multi-dimensional water currents help clothes stay tangle free.
- Water current technology designed specifically to enhance washing performance. The power of tornado-like multi-dimensional water currents guarantee excellent washing performance.

- **Magic Filter**

- This unique magic Filter ensures that all the lint inside the tub is captured for top quality filtering results to deliver consistently effective cleaning results.

- **Auto Restart**

- The power is turned on automatically after power failure.

- **CHILD-LOCK Function**

This is a device to protect children from being accidentally hurt while playing with the washer.

- How to start the Child-Lock function:  
Press the "Power" button to go to an initial washing mode.  
By pressing "Start/Pause" button, you start washing and in case Child Lock function is needed during the laundry  
Press both the "Water level" and "Function" buttons at the same times.(for 3 seconds)  
(Note: You cannot perform the function without the "Power" button on.)
- To release the function of Child-Lock: In case the "Child-Lock" is programmed, press both the "Water level" and "Function" buttons at the same time.

# safety instructions

---

Please note that the following precautions for safety intend to prevent unpredictable danger and damage by helping the proper use in safety. When using hot water in washing, please make sure that the water should not exceed 50°C.

- Plastic parts may be deformed or damaged, and an electric shock or a fire may take place.

## WARNING

---


There might be serious injury or fatal accident when you violate this instruction.

- If the plug (power supply cord) is damaged, it must be replaced by the manufacturer or its service agent or a similarly qualified person in order to avoid a hazard.
- Do not pull the cord off or touch it with moist hands.
  - An electric shock or a fire may take place.
- Do not bend the power supply cord by force or press it with heavy things.
  - An electric shock or a fire may take place.
- Do not install the washer nearby electric implement or don't put a candle light or cigarette light on the washer.
  - A fire may take place.
- During operation, do not put your hands or metal materials under the washer.
  - You may be hurt by spinning board beneath the washer.
- Stay away from the washer when the bottom of the washer sinks into the water.
  - There might be an electric shock. Please wait until the water drains out completely.
- Do not put laundry stained with gasoline, benzene, or alcohol in the washer, and keep the materials away from the washer.
  - An explosion or a fire may take place.
- During spinning, don't put your hand in the spinning tub.
  - It may hurt your hands. If it does not stop within 15 seconds after you open the lid, call service agent immediately.
- This appliance is not intended for use by young children or infirm persons unless they have been adequately supervised by a responsible person to ensure that they can use the appliance safely. Young children should be supervised to ensure that they do not play with the appliance.
- This appliance has to be connected to the plug endurable to proper power consumption.
- This appliance has to be positioned so that the plug is accessible after installation.
- No user-serviceable parts inside. Refer any servicing to qualified service personnel.
  - Otherwise this may cause a mechanical error, electric shock, fire or physical damage.
  - The product warranty does not cover problems resulting from disassembling the product.
- Do not use this product for business purposes.
- For washing machines with ventilation openings in the base, that a carpet must not obstruct the openings.

## CAUTIONS

---

There might be a slight injury or damage when you violate this instruction.

- Don't install it in the area with moisture or outdoor where it has rain or snow.
  - An electric shock or a fire may take place.
- Please unplug the power supply cord when you do not use it.
  - An electric shock or a fire may take place.
- If there is dust or water on the power supply plug and its connected part, please remove it completely.
  - An electric shock or a fire may take place.
- Do not make your kids look into the inside of the washer.
  - If your kid falls into the washer, his life could be in danger.
- Ventilate immediately without touching the power plug if gas is leaking.
  - An electric shock or a fire may take place if it catches flame.
- If the washer makes strange noise, smell or smoke, unplug it promptly and call service agent.
  - An electric shock or a fire may take place.
- When cleaning, don't spray water to the parts of the washer directly.
  - It may make its life span shorten. Also an electric shock or fire may take place.
- Don't use several appliances together with an outlet.
  - A fire may take place due to unusual heat.
- Don't press the button with an awl or pin.
  - An electric shock or a fire may take place.
- Use the new hose-sets and old hose-sets should not be reused.
- If the damage is found on the current cord in use, it should be replaced by manufacturer, service center or authorized person in order to avoid the risk.
- Connect the grounding wire to the shell plate, and bury it under at least 25cm of earth; alternatively, connect the ground wire to the appropriate pin on a properly grounded power receptacle. Never connect the wire to a telephone line, lightning rod, or gas pipe. 

Safety instructions\_3

# contents

---

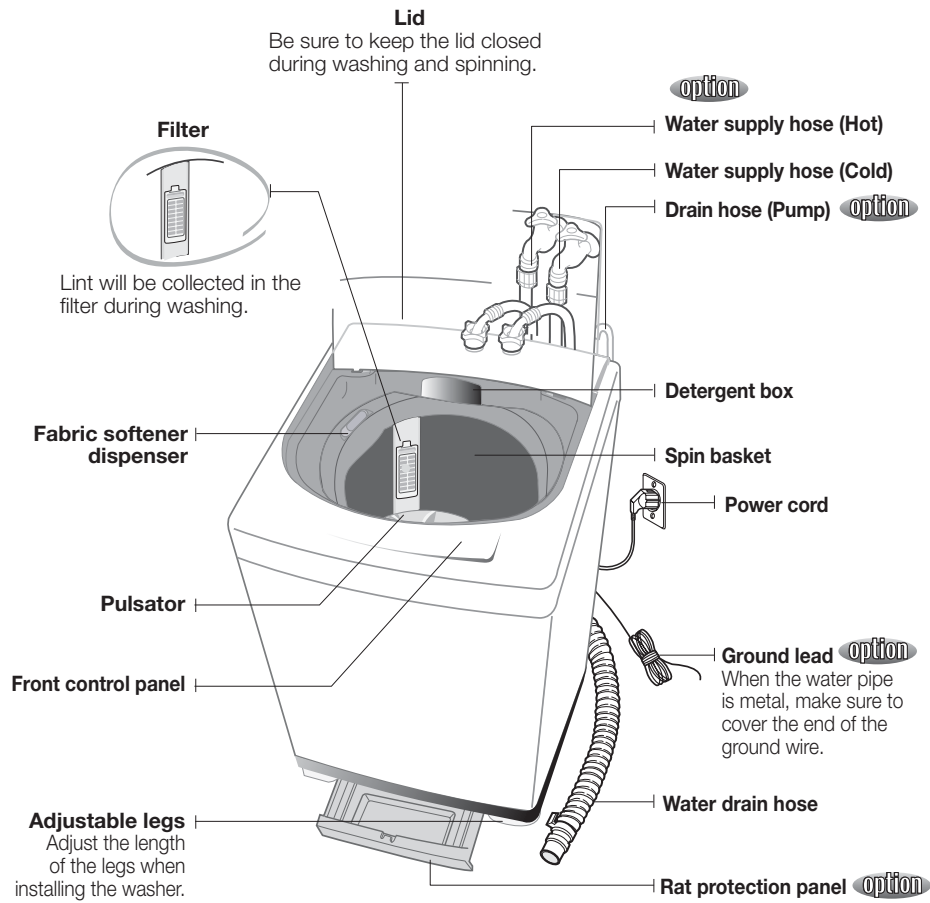
<b>SETTING UP YOUR WASHER</b>	5	Description of part
	6	Control Panel
	5	
<b>MANUAL FUNCTIONS</b>	8	Manual functions
	8	
<b>INSTALLATION &amp; MAINTENANCE</b>	9	Environment
	9	Levelling
	9	Connecting the water supply hose
	9	Assembling the rat protection panel
	10	How to connect the drain hose
	10	How to put the detergent in
	10	How to add the fabric softener
	10	Water supply connector filter
	10	Cleaning the filter
	10	How to clean the pump filter
	9	
<b>TROUBLESHOOTING</b>	11	Troubleshooting
	11	
<b>WASHING MACHINE WON'T WORK?</b>	11	Washing machine won't work?
	11	
<b>SPECIFICATION</b>	12	Specification
	12	

# setting up your washer

## DESCRIPTION OF PART

The User's Manual is for common use.

Make use of the User's Manual depending upon your washing machine model.

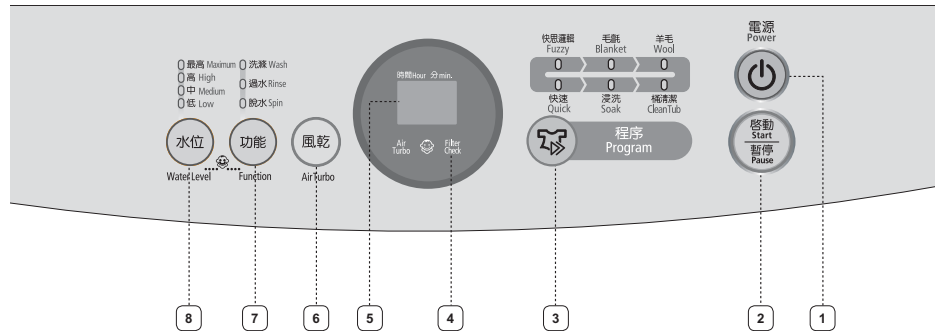


Setting up your washer \_5

# setting up your washer

## CONTROL PANEL

For more details, see control panel of your washing machine.



<b>1 POWER BUTTON</b>	Press this button once to operate. Press it again to turn the power off.
<b>2 START/PAUSE BUTTON</b>	Use to pause and restart the operation. To change the washing procedure during an operation, press this button to stop, and again to restart after changing the procedure.
<b>3 PROGRAM SELECT BUTTON</b>	Each time the button is pressed, the washing program changes; Fuzzy → blanket → wool → quick → soak → clean tub
<b>4 FILTER CHECK</b>	When the wash is finished, the warning lamp lights up on the <b>filter check</b> . When the door is opened, it turns off. (This is not a fault.) When the Magic filter is clogged, foreign materials may start sticking to the laundry. To ensure a clean wash, please remove foreign materials from the filter after every wash.
<b>5 REMAINING TIME, DELAY START TIME, ERROR DISPLAY</b>	Displays the remaining wash time. Displays the reserved delay start time. Displays the error state if a problem occurs in the washing machine so that you can take action.
<b>6 AIR TURBO BUTTON</b>	Press this button to speed dry your laundry. This function can only be selected if a spin cycle is set. You can add this function to all program except for the Wool program.
<b>7 FUNCTION BUTTON</b>	With every press of this button, the function changes; Wash,Rinse,Spin → Wash → Rinse → Spin → Wash&Rinse → Rinse&Spin → Wash,Rinse,Spin
<b>8 WATER LEVEL BUTTON</b>	The water level is automatically adjusted. However, you can select the water level manually by pressing this button. Mid → High → Mid → Low → Extra low → Low → Mid

## 6\_Setting up your washer

## FUZZY PROGRAM

Selects the best washing program automatically.

1. Press the **Power** Button to “On”.
2. Press the **Start/Pause** button.



3. Close the lid.  
Water level is selected automatically. Washing, rinsing, and spinning follow. If you want to pause, press the **Start/Pause** button again. You can change the program when paused.

## BLANKET PROGRAM

(Big volume laundry like blanket and bed cover sheets)

1. Press the **Power** button to “On”.
2. Press the **Program** select button once.
3. Press the **Start/Pause** button.



4. Close the lid.  
Water level is selected automatically. Washing, rinsing, and spinning follow. If you want to pause, press the **Start/Pause** button again. You can change the program when paused.

- Fold those big volume laundry (blanket and bed cover sheets) in the following way before adding into the spin basket.
- Do not wash the electric blanket and carpets.
- Get a laundry net for those light and big volume laundry (eg. Cashmeres) because they might rise in the water and get damaged.



## WOOL PROGRAM

Washable sweater, cardigan, delicate clothes etc.

1. Press the **Power** button to “On”.
2. Press the **Program** select button two times
3. Press the **Start/Pause** button.



4. Close the lid.  
Washing, rinsing, and spinning follow. If you want to pause, press the **Start/Pause** button again. You can change the program when paused.



- You can only select cold water.
- The last spin operates lightly to prevent wrinkles.
- Use the detergent indicated in the laundry.
- Air turbo cannot be selected in the Wool program.

## QUICK PROGRAM

If you want to wash those frequently used towels or less dirty laundry time. Because washing is speedy, it is good for light or less stained laundry.

1. Press the **Power** button to “On”.
2. Press the **Program** select button three times.
3. Press the **Start/Pause** button.



4. Close the lid.  
Water level is selected automatically. Washing, rinsing, and spinning follow. If you want to pause, press the **Start/Pause** button again. You can change the program when paused.

## SOAK PROGRAM

Select this function when you wish to wash your laundry by soaking it.

1. Press the **Power** button to “On”.
2. Press the **Program** select button four times
3. Press the **START/PAUSE** button and put the proper amount of detergent into tub.
4. Close the lid.



## KEEPING THE TUB CLEAN

When using the machine under humid conditions for an extended time, various bacteria from the air may stick to the tub and form black dirt (fungi), causing damage to the human body. To keep the tub clean and hygienic at all times, it is recommended reading “CLEAN TUB PROGRAM” above and using only dedicated or recommended detergents to clean the tub regularly at least once every one to three months.

Setting up your washer \_7

# setting up your washer

## CLEAN TUB PROGRAM

Use this program to clean the tub. It will keep the tub clean and sanitary.

1. Press the **Power** button to "On".
2. Press the **Program** select button five times.
3. Press the **Start/Pause** button.
4. Add a delicated detergent and close the lid



- Never place laundry in the tub when cleaning inside the tub, as this can cause discoloration or damage to the laundry.
- When doing the laundry after cleaning the tub, you may find some impurities. These are just detergent residues and impurities after the tub cleaning. Perform the rinse cycle two to three times.
- The Soak function (20 minutes) is set automatically.
- The water level is set to Mid early on and then changed to High during the rinse.

# manual functions

Possible to select the function for each program.

Ex) If you want to wash in the quick program : Power - Select quick program - press function button once - Start/Pause button



### WASH ONLY

Press the **Power** button.  
Press the **Function Select** button once.  
Press the **Start/Pause** button once.  
Washing goes on for 15 minutes.  
When the **Function** button is pressed during washing, the wash time can be changed to between 4 and 30 minutes in duration.



### RINSE ONLY

Press the **Function** button twice.  
Press the **Start/Pause** button once.  
Rinsing goes on for 2 times.  
When the **Function** button is pressed during rinsing, the rinse times can be changed to between 2 to 5 times in duration.



### SPIN ONLY

Press the **Function** button three times.  
Press the **Start/Pause** button once.  
Spin drying goes on for 5 minutes.  
When the **Function** button is pressed during spinning, the spin time can be changed to from 1 to 9 minutes.



### WASH AND RINSE

Press the **Function** button four times.  
Press the **Start/Pause** button once.  
Detects the amount of laundry, and determines wash and rinse time period automatically.  
When the **Function** button is pressed during working, the rinse times can be changed to between 2 to 5 times in duration.



### RINSE AND SPIN

Press the **Function** button five times.  
Press the **Start/Pause** button once.  
Rinsing and spin drying follow.  
When the **Function** button is pressed during working, the rinse times can be changed to between 2 and 5 times in duration.

## 8\_Setting up your washer



# installation & maintenance

The User's Manual is for common use. Make use of the User's Manual depending upon your washing machine model.

## ENVIRONMENT

**Leave some space** - Maintain at least 10cm between the washer and the wall.

**Place the washer on a sturdy flat surface.** - If the washer is placed on an uneven or weak surface, noise or vibration occurs. (Allowable is 1°) Adjust the legs for even placement.

**Never install the washer near water.** - Do not place the washer in steamy rooms or where the washer is directly exposed to rain. Moisture may destroy the electrical insulation causing an electrical shock hazard.

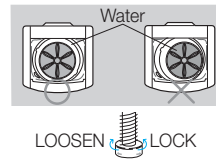
**Avoid direct sunlight or heaters.** - As plastic an electrical components are affected by direct heat, never place the washer near furnaces, boilers, etc. Do not place under direct sunlight.

## LEVELLING

If the washer is not leveled with the ground, it makes the machine tremble more or be out of order. So, make sure that the washer is leveled properly.

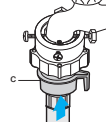
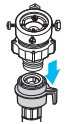
**SEE IF THE MACHINE IS PLACED LEVEL BY CHECKING THE POSITION OF THE WASHING TUB.**

- Open the lid of the machine, pour water into the tub up to the level just below the pulsator, and adjust the legs so that the pulsator is positioned at the center of the water as shown in the figure.
- Place the machine more than 10cm away from the wall.
- Adjust the legs on feet for levelling.



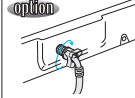
## CONNECTING THE WATER SUPPLY HOSE

1. Remove the adaptor from the water supply hose.



4. Connect the water supply hose to the adaptor. Pull down the part (c) of the water supply hose. When the part (c) is released, the hose is automatically connected to the adaptor making a 'click' sound.

2. First, using a "+" type screw driver, loosen the four screws on the adaptor. Next, take the adaptor and turn part(b) following the arrow for gap about 5 mm between them.



5. Connect the other end of the water supply hose to the inlet water valve at the back of the washer. Screw the hose clockwise all the way in.

3. Connect adaptor to the water tap by tightening the screws firmly. Then, turn part(b) following the arrow and put (a) and (b) together.



- 5-1. Connect the other end of the water supply hose to the inlet water valve at the top of the washer. Screw the hose clockwise all the way in.

- If the water tap is a screw type, assemble a water supply hose that fits to the tap as shown. After completing connection, if water leaks from the hose, then repeat the same steps.



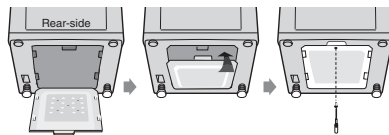
After completing connection, if water leaks from the hose, then repeat the same steps.

Use the most conventional type of faucet for water supply.

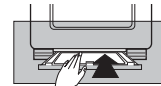
In case the faucet is square or too big, remove the spacing ring before inserting the faucet into the adaptor.

## ASSEMBLING THE RAT PROTECTION PANEL option

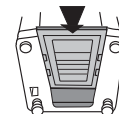
Tilt the washer a little and lift up the panel until it clicks, finally fix the panel with screw to the base as shown in the figure.



1. Insert the rat protection panel to the assembling hole on back side to the end.



2. If you have difficulty inserting the panel lift up the washer a little and insert it.

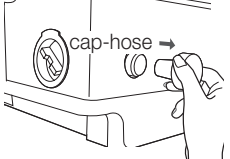
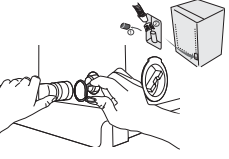
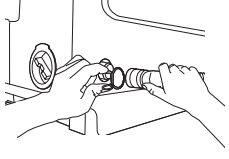
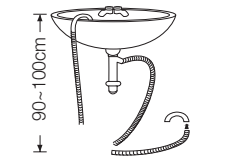


Installation & maintenance \_9

# installation & maintenance

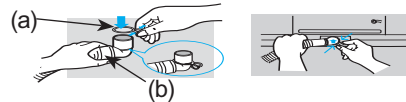
## HOW TO CONNECT THE DRAIN HOSE option

### IN CASE OF PUMP-DRAINED WASHER

			
Take out the cap-hose and connect the outlet-hose.	Be sure to join tightly the drain hose into the drainoutlet on the back of the machine.	Be sure to join tightly the drain hose into the drain-outlet on the side of the machine.	Install the drain hose in the position of about 90~100cm above the ground.

### CONNECTING THE DRAIN HOSE

After pressing the joint ring(a), insert the drain hose(b) to drain direction.



### HOW TO PUT THE DETERGENT IN

1. Open the detergent box by pulling in the direction of the arrow as shown in the figure and then put the powder detergent in the detergent box.
2. Put in one-time amount of detergent evenly so the detergent may not brim over the box.



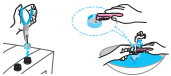


### HOW TO ADD THE FABRIC SOFTENER

Slide and open the cover in the direction of the arrow, insert the rinse detergent, and slide and close it in the reverse direction.





- When a proper amount (one time does) of fabric softener is stored in the softener inlet, it is automatically put in at the last rinsing cycle.
- Do not use detergent, bleach or starch into the Softener Inlet.
- Using too much softener may produce unsatisfactory results.
- Do not open the lid during the Spin Dry cycle. If added too early, its effectiveness will decrease.
- Do not leave the softener into the Softener Dispenser for a long time. Because softner became stiff.



### WATER SUPPLY CONNECTOR FILTER

		
1. Pull out the filter and wash well.	2. Pull in the filter and connect the hose to the inlet water valve tightly.	3. Check if there is a leakage. Note to tighten up the connector.

### CLEANING THE FILTER

1. Push the upper part of the Magic filter and pull in.		3. Clean the Magic filter.	
2. Open the cover as shown in the figure.		4. Close the cover and insert the lower part of the filter in the basket first and then push the filter with "click" sound.	

### HOW TO CLEAN THE PUMP FILTER option

1. Place a rag under the washer filter not to wet the floor.
2. Rotate the filter counterclockwise and pull out the filter.
3. Remove dirts and rotate the filter clockwise until it locks in position.



## troubleshooting

PROBLEM	CHECK
Washing machine won't work	- Is the water tap opened? - Is the washer plugged in? - Is the power cut off? - Is there enough water?
Water dose not drain 5E	- Is the drain hose down?(No pump) - Is the drain hose clogged? - Is the drain hose frozen? - If the water dose not drain in 15 minutes, a buzzer will sound, and the remaining time indicator will show "5E".
Water is not supplied 4E	- Is the water tap opened? - Is the water supply hose or hose connection clogged? - Is the water cut off? - Is the water tap frozen? - If the water supply is not finished in 1 hour or there is no change in the water level 4 minutes after the water supply has started, the buzzer rings and "4E" is displayed on the remaining time indicator.
Spinning does not work UE DE	- Is the laundry spread out evenly in the washer? - In the washer set on a sturdy flat surface?
Water is overflowed UE DE	- Restart after spinning. - If the error sign still indicates, call agency.

## washing machine won't work?

Problem	CHECK & SOLUTION
The power is cut off.	Is the electric voltage normal? Is the washer plugged in? Plug in the electric cord. ➡ Water does not drain. Is the drain hose down? Put the drain hose down. Is the drain hose folded? Unfold the drain hose. Is the drain hose outlet clogged? Remove the waste cleanly.
Washing machine won't work.	Is the washer lid open? ➡ Close the lid. Is the Pause button on? ➡ Press the Start/Pause button one more time and check if the washer starts. Is enough water filled to the water level? ➡ If the water pressure is low, it takes a long time to start washing. Is the faucet closed? ➡ Open the faucet to supply water.
If the drain hose and spin basket are frozen, do as follows.	<ul style="list-style-type: none"> <li>• Add hot water to the frozen water tap and remove the drain hose. Soak into hot water.</li> <li>• Pour hot water into the spin basket for about 10 minutes.</li> <li>• Put a hot water towel on the drain hose connector.</li> <li>• If the drain hose defrosts, connect again and check for proper water draining.</li> </ul>
The water drains out immediately.	<ul style="list-style-type: none"> <li>• The drain is clogged with coins or pins. The drain hose is hung over the drain hose hook. Half fill the spin basket with water and try for spinning again.</li> </ul>
The water leaks at the water supply hose connector.	<p>If the faucet connecting part is loose, water may leak. ➡ Repeat the assembling steps again. (Refer to "Connecting the water supply hose") Check if the rubber packing of water supply hose is in the right position. ➡ Screw tightly again. Is the water supply hose folded? ➡ Unfold the hose. If the water supply is too strong, water may leak. ➡ Close the faucet a little. Is water leaking from the faucet itself? ➡ Fix the faucet. Water is not supplied. Did you press the Start/Pause button after selecting the water supply? ➡ If the Start/Pause button is not pressed, water is not supplied. Press the Start/Pause button. Is the faucet closed? ➡ Turn on the faucet. Is the filter net at the water supply hose connector clogged with dirty matters? ➡ Clean the filter net by brushing with a toothbrush. Is the water supply cut off? ➡ If the water supply is suspended, turn off the faucet and power off.</p>
Spinning makes loud noises and vibrations.	<p>Check if the laundry is spread evenly in the washer. ➡ Spread out the laundry evenly and start again. Check if the washing machine levels on a sturdy flat floor. ➡ Set the machine at level. Is the handle for leveling legs loose? ➡ Adjust the legs on the feet for leveling. Is around the washing machine filled with unnecessary stuffs? ➡ Remove those unnecessary things away from the wash machine.</p>

Troubleshooting \_11

# specification

## WA90V3

<b>MAX. MASS OF DRY CLOTH IN kg</b>	WA90V3	7.0 kg	<b>STANDARD WATER LEVEL</b>	HIGH	60 l
<b>POWER CONSUMPTION</b>	WASH	330 W		MID	54 l
	SPIN	240 W		LOW	45 l
<b>DIMENSIONS(mm)</b>	W540xD560xH852(LOW BASE) W540xD560xH904(HIGH BASE)			EXTRA LOW	28 l
<b>WEIGHT</b>	31 kg				
<b>WATER PRESSURE</b>	0.05~0.78 MPa (0.5 ~ 8.0 kg · f/cm <sup>2</sup> )		<b>WATER USAGE</b>		160 l
<b>WASHING TYPE</b>	Stirring Type		<b>SPIN SPEED</b>		720 rpm

## WA80V3

<b>MAX. MASS OF DRY CLOTH IN kg</b>	WA80V3	6.0 kg	<b>STANDARD WATER LEVEL</b>	HIGH	57 l
<b>POWER CONSUMPTION</b>	WASH	330 W		MID	52 l
	SPIN	240 W		LOW	44 l
<b>DIMENSIONS(mm)</b>	W540xD560xH852(LOW BASE) W540xD560xH904(HIGH BASE)			EXTRA LOW	27 l
<b>WEIGHT</b>	31 kg				
<b>WATER PRESSURE</b>	0.05~0.78 MPa (0.5 ~ 8.0 kg · f/cm <sup>2</sup> )		<b>WATER USAGE</b>		150 l
<b>WASHING TYPE</b>	Stirring Type		<b>SPIN SPEED</b>		720 rpm



## QUESTIONS OR COMMENTS?

Country	CALL	OR VISIT US ONLINE AT
HONG KONG	3698-4698	<a href="http://www.samsung.com/hk">www.samsung.com/hk</a>

Code No. DC68-02594K\_EN

WA90V3  
WA80V3

# 洗衣機

## 使用說明書

### 想像無窮，可能無限

感謝您購買三星產品。  
若要享受更為全面的服務，  
請在此註冊您的產品：

[www.samsung.com/register](http://www.samsung.com/register)



# 功能

---

- **風乾系統**

- 風乾技術脫水快速有效，從而節省了您的乾衣時間。
- 省時的「風乾」節省了您的時間，確保您的乾衣速度比單掛乾快 30%-40%。特別是在雨季和高濕天氣，風乾能使曾需數天才能滴乾的衣物（例如重牛仔褲、大毛衣和厚毛氈）更快變乾。
- 便於熨燙的「風乾」功能尤其適合輕柔衣物和合成纖維製成的衣物。無需再晾掛和等待。將衣物取出洗衣機即可熨燙，因為「風乾」剛好去除了足夠水份，使衣物適當潮濕以便熨燙。

- **菱形洗衣桶**

- 菱形洗衣桶可產生更高的水壓，有效清除衣物污垢。菱形洗衣桶可最小化對衣物的損傷，延長衣物的使用壽命。閃亮的內筒既美觀又實用。

- **快思邏輯控制**

- 類似於人工智慧，快思邏輯控制可自動測定洗衣量以選用最適的洗滌程序。

- **透明視窗**

- 此透明視窗是一個新概念，可以讓使用者在洗衣過程中觀看洗衣機內部作業。在洗衣過程中，透過透明視窗可以查看洗衣機內的洗衣進度。

- **雙風暴迴轉盤 — 更少纏結，更佳洗滌效果**

- 無纏結 — 多維水流有助於防止衣物纏結。
- 水流技術專為增強洗滌效果而設計。旋風般的多維水流具有強大的力量，可保證出色的洗滌效果。

- **神奇濾網**

- 此獨特的神奇濾網可以收集洗衣桶中的所有棉絮，以取得最佳的過濾效果，並確保始終如一的有效清潔效果。

- **自動重啓**

- 斷電之後會自動開啓電源。

- **兒童鎖功能**

此裝置用於防止兒童由於玩洗衣機而意外受傷。

- 如何啓動兒童鎖功能：  
按「電源」按鈕進入初始洗滌模式。  
按「啓動/暫停」按鈕開始洗滌，在洗衣過程中需要兒童鎖功能的情況下：  
同時按「水位」和「功能」按鈕。（持續 3 秒鐘）  
（註：「電源」按鈕未開啓時無法執行該功能）。
- 欲釋放兒童鎖功能，請：在已設定「兒童鎖」的情況下，同時按「水位」和「功能」按鈕。

# 安全說明

請注意，以下安全注意事項旨在確保正確安全地使用洗衣機，防止無法預測的危險和損害。  
在使用熱水進行洗滌時，請確保水溫不超過 50°C。

- 塑膠部分可能會變形或損毀，並且有觸電或火災的危險。


## 警告

若違反此說明，可能會發生嚴重的傷害或致命的意外。

- 若插頭（電源線）已損壞，應由製造廠商、服務代理商或類似的合格人員更換，以免發生危險。
- 請勿用濕手拉電線或觸摸電線。
  - 有觸電或火災的危險。
- 請勿用力折彎電源線或用重物壓電源線。
  - 有觸電或火災的危險。
- 請勿將洗衣機安放在靠近電器的地方，或者將點燃的蠟燭或香煙放在洗衣機上。
  - 有火災的危險。
- 洗衣機運轉時，請勿將手或金屬製品放在洗衣機下面。
  - 洗衣機下面的脫水板可能會弄傷您的手。
- 若洗衣機底部沒入水中，請遠離洗衣機。
  - 可能有觸電的危險。請等待水完全排出。
- 請勿將沾有汽油、苯或酒精的衣物放入洗衣機，並使這些物質遠離洗衣機。
  - 有爆炸或火災的危險。
- 脫水時，請勿將手放進脫水桶內。
  - 這樣可能會弄傷您的手。若在打開蓋子 15 秒之後洗衣桶沒有停止轉動，請立即致電服務代理商。
- 小孩或老弱人士只有在監護人充分指導下方可使用本設備，以確保安全使用。幼孩應受到監督，以免其玩耍本機。
- 本設備必須連接至可承受適當消耗功率的插頭上。
- 本設備必須放置於安裝後可連接至插頭的位置。
- 本設備內沒有可供使用者自行維修的零件。如有任何維修事宜，請諮詢合格的維修人員。
  - 否則可能會導致機械故障、觸電、火災或人身傷害。
  - 因拆卸產品引起的問題不在產品保固的範圍之內。
- 不要將本產品用於商業目的。
- 對於底部有通風口的洗衣機，不可讓地毯阻塞通風口。

## 注意

若違反此說明，可能會發生輕微的傷害或損毀。

- 請勿將洗衣機安放在潮濕環境中或者會淋到雨雪的戶外。
  - 有觸電或火災的危險。
- 在不使用洗衣機時，請拔下電源線。
  - 有觸電或火災的危險。
- 若電源插頭及其連接部分有灰塵或水，請清除乾淨。
  - 有觸電或火災的危險。
- 請勿讓兒童攀看洗衣機內部。
  - 若兒童掉進洗衣機內，可能有生命危險。
- 瓦斯洩漏時，請立即開窗讓空氣流通，請勿觸摸電源插頭。
  - 若洗衣機著火，將有觸電或火災的危險。
- 若洗衣機發出奇怪的聲音、氣味或煙味，請立即將電源線拔下並致電服務代理商。
  - 有觸電或火災的危險。
- 清潔洗衣機時，請勿直接潑水到機體上沖洗。
  - 這樣做會縮短洗衣機的壽命。還有觸電或火災的危險。
- 請勿讓數個電器共用一個插座。
  - 過熱會有火災的危險。
- 請勿用尖錐或大頭針按按鈕。
  - 有觸電或火災的危險。
- 請使用新軟管，舊軟管不應再使用。
- 若發現正在使用的電源線損壞，應由製造廠商、維修中心或經授權的人員更換，以免發生危險。
- 將接地線連接到外殼板，並將接地線埋藏在地面下至少 25 cm 處；或者將接地線連接到正確接地的電源插座上適當的引線。切勿將接地線連接到電話線、避雷針或瓦斯管道上。 

# 目錄

---

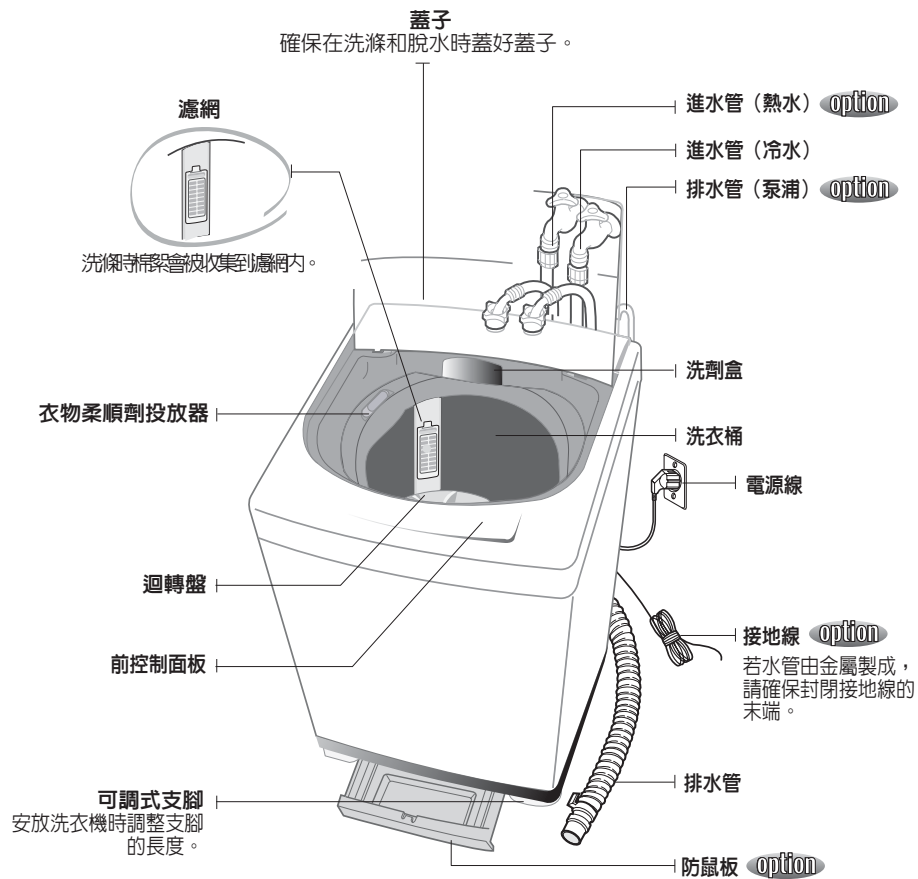
<b>設定洗衣機</b>	5	零件說明
	6	控制面板
<b>5</b>		
<b>手動功能</b>	8	手動功能
<b>8</b>		
<b>安裝與保養</b>	9	環境
	9	平衡安裝
	9	連接進水管
	9	裝配防鼠板
	10	連接排水管的方法
	10	放入洗劑的方法
	10	加入衣物柔順劑的方法
	10	進水管連接口過濾器
	10	清洗過濾器
	10	清洗泵浦過濾器的方法
<b>疑難排解</b>	11	疑難排解
<b>11</b>		
<b>洗衣機無法工作？</b>	11	洗衣機無法工作？
<b>11</b>		
<b>規格</b>	12	規格
<b>12</b>		



# 設定洗衣機

## 零件說明

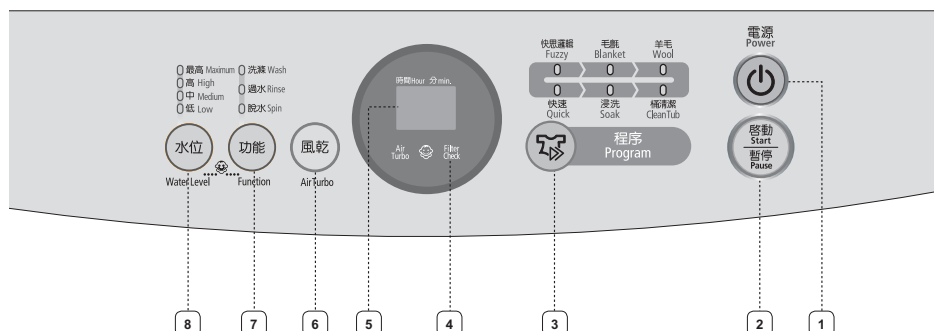
《使用說明書》是通用的。  
請根據您的洗衣機型號使用本《使用說明書》。



# 設定洗衣機

## 控制面板

欲瞭解更多詳細資料，請參見洗衣機的控制面板。



1 電源按鈕	按一下此按鈕，洗衣機開始運轉。 再按一下關閉電源。
2 啟動/暫停按鈕	用於暫停和重新啟動洗衣機的運轉。 要在洗衣機運轉時變更洗程， 請按此按鈕停止運轉，在變更程序後再按一下以重新啟動。
3 程序選擇按鈕	每次按該按鈕時，會變更洗滌程序： 快思邏輯→毛氈→羊毛→快速→浸洗→桶清潔
4 過濾器檢查	在洗衣完成時，「過濾器檢查」上的警告燈會亮起。 在機門打開後，它會關閉。（這不是故障）。 在神奇濾網堵塞時，異物可能會逐漸黏附在衣物上。 為確保清潔的洗衣過程，請在每次洗衣後移除濾網上的異物。
5 剩餘時間、 延遲啟動時間、 錯誤顯示	顯示剩餘洗滌時間。 顯示預約延遲啟動時間。 若洗衣機發生問題，則顯示錯誤狀態，以便您可以採取行動。
6 風乾按鈕	按此按鈕以更快乾衣。 只有在設定了脫水程序的情況下才可選擇此功能。 您可將此功能附加至除「羊毛」程序之外的所有程序。
7 功能按鈕	每按一下此按鈕，功能會按以下順序變更： 洗滌、過水、脫水→洗滌→過水→脫水→洗滌和過水→過水和脫水→洗滌、過水、脫水
8 水位按鈕	水位會自動調整。然而，您可以透過按此按鈕手動選擇水位。 中→高→中→低→最低→低→中

## 快思邏輯程序

自動選擇最佳洗滌程序。

1. 按「**電源**」按鈕開啓電源。
2. 按「**啓動/暫停**」按鈕。  
會自動選擇水位。洗滌、過水和脫水程序會依序進行。  
若要暫停，請再次按「**啓動/暫停**」按鈕。暫停後您可以變更程序。
3. 蓋上蓋子。



## 毛氈程序

(適用於毛氈和床罩等體積大的衣物)

1. 按「**電源**」按鈕開啓電源。
2. 按一下「**程序**」選擇按鈕。
3. 按「**啓動/暫停**」按鈕。  
會自動選擇水位。洗滌、過水和脫水程序會依序進行。若要暫停，請再次按「**啓動/暫停**」按鈕。暫停後您可以變更程序。
4. 蓋上蓋子。
  - 將體積大的衣物（毛氈和床罩）按以下方法摺疊，再放入洗衣桶。
  - 不要洗滌電熱毯和地毯。
  - 洗滌體積大而重量輕的衣物（例如羊絨織品）時請使用洗衣網，因為它們可能會浮在水面上並損壞。



## 羊毛程序

適用於可水洗的毛線衣、羊毛衫和輕柔衣物等。

1. 按「**電源**」按鈕開啓電源。
2. 按兩下「**程序**」選擇按鈕。
3. 按「**啓動/暫停**」按鈕。  
洗滌、過水和脫水程序會依序進行。若要暫停，請再次按「**啓動/暫停**」按鈕。暫停後您可以變更程序。
4. 蓋上蓋子。
  - 您只能選擇冷水。
  - 最後的脫水應輕輕進行，以防起皺。
  - 請使用衣物標籤上指定的洗劑。
  - 在「羊毛」程序中，無法選擇「風乾」。



注意

## 快速程序

在清洗那些經常用的毛巾或不太髒的洗滌物時可以使用。  
該洗程用時短，適用於清洗輕薄或不太髒的洗滌物。

1. 按「**電源**」按鈕開啓電源。
2. 按三下「**程序**」選擇按鈕。
3. 按「**啓動/暫停**」按鈕。  
會自動選擇水位。洗滌、過水和脫水程序會依序進行。若要暫停，請再次按「**啓動/暫停**」按鈕。暫停後您可以變更程序。
4. 蓋上蓋子。



## 浸洗程序

在您希望透過浸泡來洗滌衣物時，請選擇此功能。

1. 按「**電源**」按鈕開啓電源。
2. 按四下「**程序**」選擇按鈕。
3. 按「**啓動/暫停**」按鈕並往洗衣桶內加入適量的洗劑。
4. 蓋上蓋子。



## 保持洗衣桶清潔

若長期在潮濕條件下使用洗衣機，來自空氣的各種細菌可能會黏附在洗衣桶上，形成黑斑（真菌），對人體造成危害。若想使洗衣桶一直保持清潔和衛生，建議您閱讀上面的「桶清潔程序」資訊，並僅用專用或建議洗劑定期清潔洗衣桶，至少每一到三個月一次。

# 設定洗衣機

## 桶清潔程序

使用此程序清潔洗衣桶。它將使洗衣桶保持清潔和衛生。

1. 按「電源」按鈕開啓電源。
2. 按五下「程序」選擇按鈕。
3. 按「啓動/暫停」按鈕。
4. 加入洗劑並蓋上蓋子。



- 在清潔洗衣桶時切勿將衣物置於洗衣桶內，否則會導致衣物褪色或損壞。
- 清潔完洗衣桶後，在洗衣時您可能會發現一些雜質。這些只是清潔洗衣桶後殘留的洗劑及其雜質。執行過水程序兩到三次。
  - 會自動設定「浸洗」功能（20 分鐘）。
  - 水位最初會設定為「中」，然後在過水時變為「高」。

## 手動功能

可為每個程序選擇功能。

例如) 若要以快速程序進行洗衣：「電源」 - 選擇快速程序 - 按一下功能按鈕 - 「啓動/暫停」按鈕

**只進行洗滌**  
按「電源」按鈕。  
按一下「功能」選擇按鈕。  
按一下「啓動/暫停」按鈕。  
洗滌會持續 15 分鐘。  
在洗滌過程中按「功能」按鈕，洗滌時間可以在 4 至 30 分鐘之間調整。

**只進行過水**  
按兩下「功能」按鈕。  
按一下「啓動/暫停」按鈕。  
會進行 2 次過水。  
在過水過程中按「功能」按鈕，過水次數可以在 2 至 5 次之間調整。

**只進行脫水**  
按三下「功能」按鈕。  
按一下「啓動/暫停」按鈕。  
脫水程序會持續 5 分鐘。  
在脫水過程中按「功能」按鈕，脫水時間可以在 1 至 9 分鐘之間調整。

**洗滌並過水**  
按四下「功能」按鈕。  
按一下「啓動/暫停」按鈕。  
根據洗滌物的量，會自動確定洗滌和過水時間。  
在這個過程中按「功能」按鈕，過水次數可以在 2 至 5 次之間調整。

**過水並脫水**  
按五下「功能」按鈕。  
按一下「啓動/暫停」按鈕。  
過水和脫水程序會依序進行。  
在這個過程中按「功能」按鈕，過水次數可以在 2 至 5 次之間調整。

### 8\_手動功能

# 安裝與保養

《使用說明書》是通用的。請根據您的洗衣機型號使用本《使用說明書》。

## 環境

**保持一定的距離** - 洗衣機與牆壁之間至少要保持 10 cm 的距離。

**洗衣機要放置在表面堅固且平坦的地方。** - 若洗衣機放置在表面不平坦或不牢固的地方，會發出噪音或產生震動。（允許 1° 的傾斜）調整支腳以取得平衡。

**切勿將洗衣機放置在水源附近。** - 請勿將洗衣機放置在蒸汽較多的房內或容易淋到雨水的地方。濕氣可能會破壞電器的絕緣材料，導致觸電的危險。

**避免陽光直射或靠近熱源。** - 直接加熱會對塑膠和電子元件產生影響，因此請勿將洗衣機放置於靠近火爐、汽鍋等熱源的地方，也不要放置於陽光直射的地方。

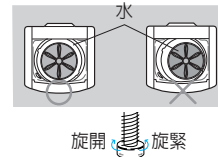
## 平衡安裝

若洗衣機放置不穩，則會使機身產生嚴重振動或出現故障。

因此，請確保洗衣機平衡安裝。

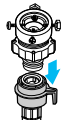
可以透過檢查洗衣桶的位置判斷洗衣機是否平衡安裝。

- 打開洗衣機機蓋，往洗衣桶內加水至正好位於迴轉盤下面的水位高度，然後調整支腳使迴轉盤位於水中央（如圖所示）。
- 洗衣機與牆壁之間的距離要大於 10 cm。
- 調整底部的支腳以取得平衡。



## 連接進水管

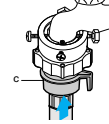
1. 取下進水管的連接器。



2. 首先，用十字起將連接器上的四個螺絲擰鬆。接著，緊握連接器並將 (b) 部分沿圖中箭頭方向旋開約 5 mm 的間距。



3. 將連接器連接到水龍頭上並旋緊螺絲。然後，將 (b) 部分沿圖中箭頭方向旋緊使 (a) 和 (b) 部分相連。



4. 將進水管接到連接器。往下拉進水管的 (c) 部分。在 (c) 部分鬆開時，隨著卡嗒聲水管會自動接到連接器。

5. 將進水管的另一端連接到洗衣機後面的進水閥。沿順時針方向將水管旋到底。



5-1. 將進水管的另一端連接到洗衣機上面的進水閥。沿順時針方向將水管旋到底。

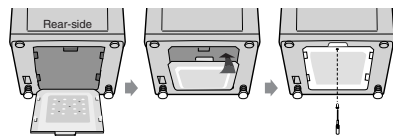
- 若水龍頭是螺旋式的，則需裝配適合水龍頭的進水管（如圖所示）。完成連接後，若水管漏水，請重複上述步驟。



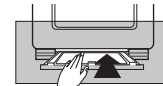
- 完成連接後，若水管漏水，請重複上述步驟。請使用最常用的水龍頭供水。
- 若水龍頭是正方形或太大，請在將水龍頭插入連接器之前取出墊圈。

## 裝配防鼠板 option

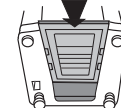
將洗衣機略作傾斜並將防鼠板提起直至合上，然後如圖所示用螺絲將板固定在底部。



1. 將防鼠板完全插入洗衣機後側的安裝孔。



2. 若防鼠板很難插進，可以將洗衣機稍微抬起再插。



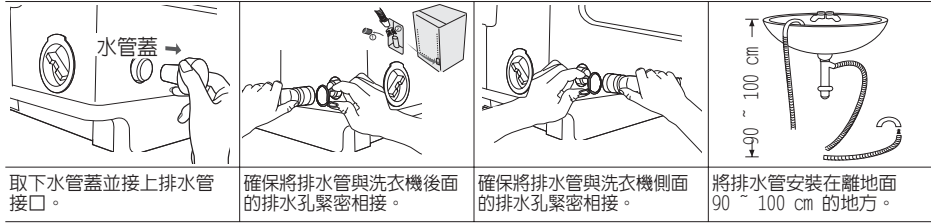
安裝與保養\_9

# 安裝與保養

## 連接排水管的方法

option

以下為泵排式洗衣機的連接方法



### 連接排水管

按下連接套環 (a) 的兩端，沿排水方向套進排水管 (b)。



### 放入洗劑的方法

1. 沿圖中所示的箭頭方向拉出洗劑盒，然後將洗衣粉放入洗劑盒中。
2. 均勻地加入一次量的洗劑，以防洗劑溢出盒子。



### 加入衣物柔順劑的方法

沿箭頭方向滑動並打開蓋子，放入柔順劑，然後沿相反方向滑動並合上蓋子。

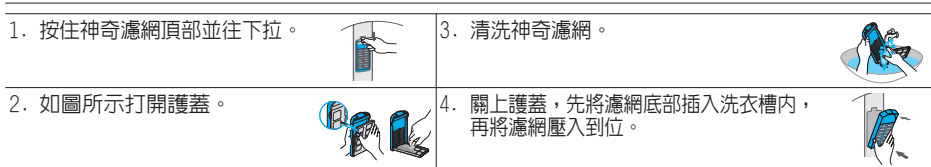
- 將適量（一次量）的衣物柔順劑放在柔順劑入口後，在最後的過水過程中會自動將其加入。
- 請勿在柔順劑入口加入洗劑、漂白劑或澱粉漿。
- 使用過量的柔順劑可能會使清洗效果不理想。
- 在脫水過程中請勿打開機蓋。若過早加入柔順劑，則其效果會降低。
- 請勿將柔順劑長時間留在柔順劑投放器內。因為柔順劑會變硬。



### 進水管連接口過濾器



### 清洗過濾器



### 清洗泵浦過濾器的方法 option

1. 在洗衣機過濾器下方鋪上抹布以免弄濕地面。
2. 逆時針方向旋轉過濾器並將其拉出。
3. 清除污垢，然後順時針方向旋轉過濾器直至旋緊到位。



## 10 安裝與保養

# 疑難排解

問題	檢查
洗衣機無法工作	<ul style="list-style-type: none"> <li>- 水龍頭是否已打開？</li> <li>- 洗衣機是否插上電源？</li> <li>- 是否停電？</li> <li>- 水量是否足夠？</li> </ul>
無法排水 <b>5E</b>	<ul style="list-style-type: none"> <li>- 排水管是否放下？（沒有泵浦）</li> <li>- 排水管是否凍結？</li> <li>- 排水管是否堵塞？</li> <li>- 若 15 分鐘後仍未排水，則警報器會響起，並且剩餘時間指示器會顯示「5E」。</li> </ul>
無法進水 <b>4E</b>	<ul style="list-style-type: none"> <li>- 水龍頭是否已打開？</li> <li>- 是否停水？</li> <li>- 進水管或水管線路是否堵塞？</li> <li>- 水龍頭是否凍結？</li> <li>- 若在 1 小時內未完成供水，或在供水開始 4 分鐘後水位仍無變化，則警報器會響起，並且剩餘時間指示器會顯示「4E」。</li> </ul>
無法脫水 <b>UE OE</b>	<ul style="list-style-type: none"> <li>- 洗衣機內的洗滌物是否放置均勻？</li> <li>- 洗衣機是否放置於表面堅固且平坦的地方？</li> </ul>
出現溢水 <b>IE OE</b>	<ul style="list-style-type: none"> <li>- 脫水後重新啟動。</li> <li>- 若仍顯示錯誤符號，請致電代理商。</li> </ul>

## 洗衣機無法工作？

問題	檢查和解決方案
沒有供電。	<ul style="list-style-type: none"> <li>電壓是否正常？</li> <li>洗衣機是否插上電源？ 插好電源線。 ➔ 無法排水</li> <li>排水管是否放下？ 放下排水管。</li> <li>排水管是否被彎折？ 拉直排水管。</li> <li>排水管的出水口是否堵塞？ 清除堵塞物。</li> </ul>
洗衣機無法工作。	<ul style="list-style-type: none"> <li>機蓋是否開著？ ➔ 蓋上蓋子。</li> <li>是否已按「暫停」按鈕？ ➔ 再按一下「啟動/暫停」按鈕看洗衣機是否運轉。</li> <li>是否加滿規定量水？</li> <li>➔ 水壓低時需要較長時間方可開始洗衣。</li> <li>水龍頭是否關閉？ ➔ 打開水龍頭進水。</li> </ul>
若排水管和洗衣桶被凍結，請使用以下方法：	<ul style="list-style-type: none"> <li>• 往凍結的水龍頭澆熱水再將排水管取下。浸泡到熱水中。</li> <li>• 往洗衣桶內加熱水，大約泡 10 分鐘。</li> <li>• 將浸過熱水的毛巾放在排水管連接器上。</li> <li>• 排水管解凍後，再將其接上看是否正常排水。</li> </ul>
排水迅速。	<ul style="list-style-type: none"> <li>• 排水口被硬幣或細小物件堵塞。排水管掛在排水管掛鉤上。</li> <li>將洗衣桶內的水加至半滿，再重新脫水。</li> </ul>
進水管的連接部位漏水。	<ul style="list-style-type: none"> <li>水龍頭連接處鬆開時可能會漏水。</li> <li>➔ 重新安裝。（請參閱「連接進水管」部分）</li> <li>檢查進水管的橡皮套環位置是否正確。 ➔ 重新旋緊。</li> <li>進水管是否被彎折？ ➔ 拉直水管。</li> <li>水壓過高時也可能漏水。 ➔ 將水龍頭稍微關小一點。</li> <li>水龍頭本身是否漏水？ ➔ 修理水龍頭。無法進水。</li> <li>選擇進水後是否按下「啟動/暫停」按鈕？</li> <li>➔ 沒有按「啟動/暫停」則不會進水。按「啟動/暫停」按鈕。</li> <li>水龍頭是否關閉？ ➔ 打開水龍頭。</li> <li>進水管連接口的濾網上是否夾有異物？</li> <li>➔ 用牙刷刷乾淨濾網。</li> <li>是否停水？ ➔ 若停水，則關上水龍頭和電源。</li> </ul>
脫水時產生噪音和震動。	<ul style="list-style-type: none"> <li>檢查洗衣機內的洗滌物是否放置均勻。 ➔ 鋪平洗滌物後重新開始。</li> <li>檢查洗衣機是否水平放置在堅固平坦的地面。 ➔ 將洗衣機水平放置。</li> <li>可調式支腳的把手是否鬆開？ ➔ 調整底部的支腳以取得平衡。</li> <li>洗衣機的周圍是否擺滿不必要的東西？</li> <li>➔ 將洗衣機周圍不必要的東西拿開。</li> </ul>

# 規格

## WA90V3

最大乾衣物容量 (kg)	WA90V3	7.0 kg	標準水位	高	60 ℓ
耗電量	洗滌	330 W		中	54 ℓ
	脫水	240 W		低	45 ℓ
外形尺寸 (mm)	寬 540 x 深 560 x 高 852 (低底) 寬 540 x 深 560 x 高 904 (高底)			最低	28 ℓ
重量	31 kg				
水壓	0.05 ~ 0.78 MPa (0.5 ~ 8.0 kg · f/cm <sup>2</sup> )		用水量	160 ℓ	
洗衣類型	攪拌式		脫水速度	720 rpm	

## WA80V3

最大乾衣物容量 (kg)	WA80V3	6.0 kg	標準水位	高	57 ℓ
耗電量	洗滌	330 W		中	52 ℓ
	脫水	240 W		低	44 ℓ
外形尺寸 (mm)	寬 540 x 深 560 x 高 852 (低底) 寬 540 x 深 560 x 高 904 (高底)			最低	27 ℓ
重量	31 kg				
水壓	0.05 ~ 0.78 MPa (0.5 ~ 8.0 kg · f/cm <sup>2</sup> )		用水量	150 ℓ	
洗衣類型	攪拌式		脫水速度	720 rpm	



有疑問或意見？

國家/地區	電話	或造訪我們的網站
HONG KONG	3698-4698	<a href="http://www.samsung.com/hk">www.samsung.com/hk</a>

編號：DC68-02594K\_HKTC