

\* Some of the contents of this manual may differ from your phone, depending on the software installed or your service provider.



# DUAL BAND GPRS TELEPHONE SGH-S508



World Wide Web  
<http://www.samsungmobile.com>

Printed in Korea  
Code No.: GH68-04356A  
English. 09/2003. Rev. 1.0

# Contents

<b>Important Safety Precautions .....</b>	<b>7</b>
<b>Unpacking .....</b>	<b>9</b>
<b>Your Phone .....</b>	<b>10</b>
Phone Layout .....	10
Display .....	13
Backlight .....	15
Display Off Mode .....	15
<b>Getting Started .....</b>	<b>16</b>
Inserting/Removing the SIM Card .....	16
Installing/Removing/Charging the Battery .....	17
Switching the Phone On or Off .....	23
Selecting Functions and Options .....	24
<b>Call Functions .....</b>	<b>26</b>
Making a Call .....	26
Ending a Call .....	29
Answering a Call .....	29
Rejecting a Call .....	30
Adjusting the Volume .....	30
Accessing Options During a Call .....	31
Using the Ear-microphone .....	38
<b>Entering Text .....</b>	<b>39</b>
Changing the Text Input Mode .....	40
Using Pinyin Mode .....	41
Using Chinese Stroke Modes .....	43
Using Quick English Mode .....	46
Using English Mode .....	48
Using Number Mode .....	49
Using Symbolic Mode .....	50

**Phonebook ..... 51**

Creating a Phonebook Entry .....	51
Searching for and Dialling a Number in Phonebook .....	53
Changing the Phonebook Entries.....	54
Speed-dialling .....	56
Copying Entries from the SIM Card to the Phone's Memory .....	58
Deleting the Phonebook Entries .....	59
Editing Group Settings .....	60
Using Other Phonebook Features .....	61

**Using the Menus..... 64**

Accessing a Menu Function .....	64
List of Menu Functions.....	65

**Messages ..... 70**

Inbox ( <i>Menu 1.1</i> ) .....	70
Outbox ( <i>Menu 1.2</i> ) .....	72
New message ( <i>Menu 1.3</i> ) .....	74
Voice mail ( <i>Menu 1.4</i> ) .....	76
Preset messages ( <i>Menu 1.5</i> ) .....	77
Settings ( <i>Menu 1.6</i> ) .....	78
Memory status ( <i>Menu 1.7</i> ) .....	78
Delete all ( <i>Menu 1.8</i> ) .....	79
Broadcast ( <i>Menu 1.9</i> ) .....	80

**Call Records ..... 82**

Missed calls ( <i>Menu 2.1</i> ) .....	82
Received calls ( <i>Menu 2.2</i> ) .....	83
Dialled calls ( <i>Menu 2.3</i> ) .....	83
Delete all ( <i>Menu 2.4</i> ) .....	84
Call time ( <i>Menu 2.5</i> ) .....	84
Call costs ( <i>Menu 2.6</i> ) .....	85

**Sound Settings..... 86**

Incoming calls ( <i>Menu 3.1</i> ) .....	86
Messages ( <i>Menu 3.2</i> ) .....	87
Power on/off ( <i>Menu 3.3</i> ) .....	87
Connection tone ( <i>Menu 3.4</i> ) .....	88
Key tone ( <i>Menu 3.5</i> ) .....	88
Minute minder ( <i>Menu 3.6</i> ) .....	89
Quiet mode ( <i>Menu 3.7</i> ) .....	89

**Phone Settings..... 90**

Greeting message ( <i>Menu 4.1</i> ) .....	90
Display ( <i>Menu 4.2</i> ) .....	91
Language ( <i>Menu 4.3</i> ) .....	93
Security ( <i>Menu 4.4</i> ) .....	93
Auto redial ( <i>Menu 4.5</i> ) .....	97
Side key ( <i>Menu 4.6</i> ) .....	97
Fax mode ( <i>Menu 4.7</i> ) .....	98
Reset settings ( <i>Menu 4.8</i> ) .....	99

**Organiser ..... 100**

New memo ( <i>Menu 5.1</i> ) .....	100
Calendar ( <i>Menu 5.2</i> ) .....	102
To do list ( <i>Menu 5.3</i> ) .....	104
Clock ( <i>Menu 5.4</i> ) .....	106
Alarm ( <i>Menu 5.5</i> ) .....	108
Calculator ( <i>Menu 5.6</i> ) .....	110
Conversion ( <i>Menu 5.7</i> ) .....	111
Timer ( <i>Menu 5.8</i> ) .....	112
Stopwatch ( <i>Menu 5.9</i> ) .....	113

**Network Services ..... 114**

Call diverting ( <i>Menu 6.1</i> ) .....	114
Call barring ( <i>Menu 6.2</i> ) .....	116
Call waiting ( <i>Menu 6.3</i> ) .....	119
Network selection ( <i>Menu 6.4</i> ) .....	120
Caller ID ( <i>Menu 6.5</i> ) .....	121
Active Line ( <i>Menu 6.6</i> ) .....	121

### **Fun Box..... 122**

WWW Services ( <i>Menu 7.1</i> ) .....	122
Fun Club ( <i>Menu 7.2</i> ) .....	129
Media box ( <i>Menu 7.3</i> ) .....	131
Games ( <i>Menu 7.4</i> ) .....	132
IrDA ( <i>Menu 7.5</i> ) .....	135

### **Using ALS (Alternate Line Service) ..... 138**

### **Solving Problems ..... 140**

### **Access Codes ..... 143**

Phone Password .....	143
PIN .....	143
PIN2 .....	144
PUK .....	144
PUK2 .....	145
Call Barring password .....	145

### **Health and Safety Information ..... 146**

Battery Safety .....	146
Road Safety .....	148
Operating Environment .....	150
Electronic Devices.....	150
Potentially Explosive Environments .....	152
Emergency Calls.....	153
Other Important Safety Information .....	154
Care and Maintenance.....	155

### **Glossary ..... 157**

### **Quick Reference Card ..... 161**

# Important Safety Precautions

Read these guidelines before using your wireless phone. Failure to comply with them may be dangerous or illegal.

## **Road Safety at All Times**

Do not use a hand-held phone while driving; park the vehicle first.

## **Switching Off When Refuelling**

Do not use the phone at a refuelling point (service station) or near fuels or chemicals.

## **Switching Off in Aircraft**

Wireless phones can cause interference. Using them in aircraft is both illegal and dangerous.

## **Switching Off in Hospitals**

Switch your phone off near medical equipment. Follow any regulations or rules in force.

## **Interference**

All wireless phones may be subject to interference, which could affect their performance.


## **Special Regulations**

Meet any special regulations in force in any area and always switch your phone off whenever it is forbidden to use it, or when it may cause interference or danger (in a hospital for example).

### Sensible Use

Use only in the normal position (held to the ear). Avoid unnecessary contact with the antenna when the phone is switched on.

### Emergency Call

Ensure the phone is switched on and in service. Key in the emergency number for your present location, then press the  key. You must deactivate any unnecessary features before you can make an emergency call. Give all the necessary information as accurately as possible. Do not cut off the call until given permission to do so.

### Water Resistance

Your phone is not water-resistance. Keep it dry.

### Accessories and Batteries

Use only Samsung-approved accessories and batteries. Use of any unauthorised accessories could damage your phone and may be dangerous.

### Qualified Service

Only qualified service personnel may install or repair your phone.

For more detailed safety information, see "Health and Safety Information" on page 146.

## Unpacking

Your package contains the following items:



Phone



Travel Adapter



Batteries



Battery Charger



Hand Strap



Wearable  
Ear-Microphone



Owner's Manual

**Note:** The items supplied with your phone may be different depending on your country.

# Your Phone

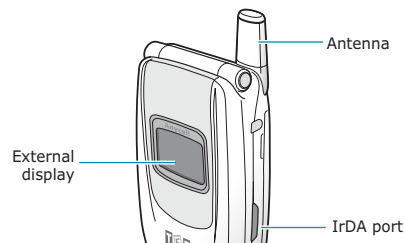
## Phone Layout

The following illustrations show the main elements of your phone:

### Open View



### Closed View



### Key(s) Description



Perform the functions indicated by the text above them, on the bottom line of the display.



In Menu mode, scroll through the menus and Phonebook.

In Idle mode, the Left key enters the **New message** menu and the Right key enters the **Melody** menu.



In Idle mode, allows you to launch the WAP (Wireless Application Protocol) browser or Samsung Fun Club.









Makes or answers a call.

In Idle mode, accesses the call log list. In Menu mode, selects a menu function or stores information that you have entered, such as a name in the phone or SIM memory.



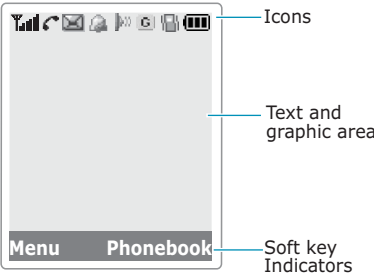
Deletes characters from the display. In Idle mode, quickly accesses the **New memo** menu when held down.

Key(s)	Description (continued)
	Ends a call. Switches the phone on and off when held down. In Menu mode, cancels your input and returns to Idle mode.
	Quickly accesses your voice mail server when held down.
	Enters numbers, letters and some special characters. In Idle mode, the <b>0</b> key automatically displays the international calling number when held down.
 	Used for various purposes in different functions. While entering a number, the <b>*</b> key enters a pause when held down. In Idle mode, the <b>#</b> key enters or exits Quiet mode when held down.
	(on the left side of the phone) During a call, adjust the earpiece volume. In Idle mode with the phone open, adjust the key volume. In Idle mode with the phone closed, turn the external display's backlight on when held down. At an incoming call with the folder closed, reject the call or silence the ring tone when held down. See page 97.

## Display

### Display Layout

The display has three areas:



Area	Description
First line	Displays various icons. See page 14.
Middle lines	Display messages, instructions and any information that you enter, such as number you are dialling.
Last line	Shows the functions currently assigned to the two soft keys.



## Icons

### Icon Description



Shows the received signal strength. The greater the number of bars, the stronger the signal.



Appears when a call is in progress.



Appears when you are outside a service area. When it displays, you cannot make or receive calls.



Appears when you have new or unread messages.



Appears when you have new or unchecked voice messages.



Appears when you set the alarm to ring at a specified time.



Appears when the IrDA port is active. For details, see page 135.



Appears when you are connected to the GPRS network.



Appears when the Call Diverting feature is activated.



Appears when you set the **Alert type** menu (**Menu 3.1.3**) so that the phone vibrates when you receive a call; for further details, see page 86.



Appears when Quiet mode is active.



Shows the level of your battery. The more bars you see, the more power you have left.

## External Display

Your phone has an external display on the folder. It indicates that you have an incoming call or message, and notifies you at the specified time when you set an alarm.

When you press and hold one of the Volume keys with the folder closed, the external display's backlight illuminates.

When the ear-microphone is connected to the phone, you can also use the button on it to turn the backlight on.

## Backlight

The display and the keypad are illuminated by a backlight. When you press any key or open the folder, the backlight illuminates. It turns off if no key is pressed within a given period of time, depending on your setting in the **Backlight** menu (**Menu 4.2.3**). See page 92 for further details.

**Note:** The backlight remains on at all times when the phone is connected to the ear-microphone.

## Display Off Mode

If no key is pressed one minute after the backlight turns off, the display goes into the Off mode to save the power. Press any key to awake the display from the Off mode.

# Getting Started

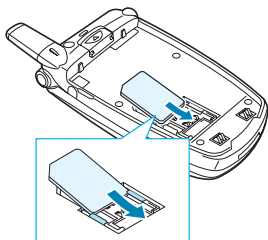
## Inserting/Removing the SIM Card

When you subscribe to a cellular network, you are provided with a SIM card loaded with your subscription details, such as your PIN, any optional services available and so on.

- Keep all miniature SIM cards out of the reach of small children.
- The SIM card and its contacts can easily be damaged by scratches or bending, so be careful when handling, inserting or removing the card.
- When installing the SIM card, always make sure that the phone is switched off before you remove the battery.

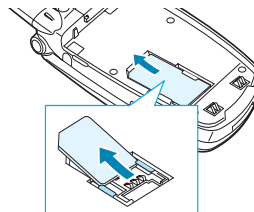
### Inserting the SIM Card

1. If necessary, remove the battery by referring to page 17.
2. Slide the SIM card into the SIM card socket, as shown, so that it locks the card into position. Make sure that the gold contacts of the card face into the phone.



## Removing the SIM Card

To remove the SIM card, slide the card out of the holder, as shown.



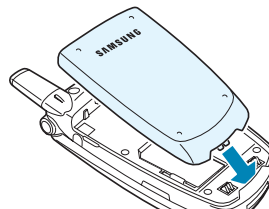
## Installing/Removing/Charging the Battery

Your phone is powered by a rechargeable Li-ion battery. Use only approved batteries and chargers. Ask your local Samsung dealer for further details.

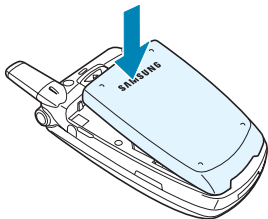
**Note:** You must fully charge the battery before using your phone for the first time. A discharged standard battery is fully recharged in approximately 140 minutes.

### Installing the Battery

1. Insert the tabs on the end of the battery into the notches on the phone.

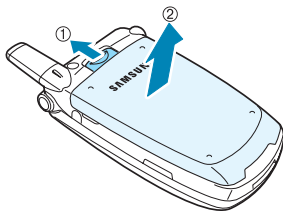


2. Press the battery until it clicks into place. Make sure that the battery is properly installed before switching the phone on.



## Removing the Battery

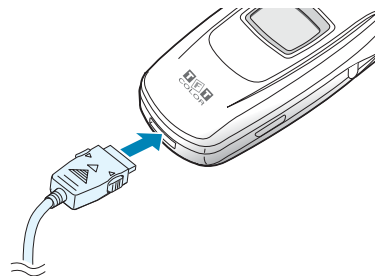
To remove the battery, pull the battery catch toward the top of the phone and hold it in that position. Lift the battery away from the phone.



## Charging the Battery Using the Travel Adapter

**Note:** The phone can be used while the battery is being charged, but this causes the phone to charge more slowly.

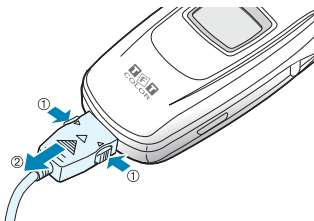
1. Plug the connector of the travel adapter into the jack at the bottom of the phone. Check that the arrow on the connector is facing towards the front of the phone.



2. Plug the adapter into a standard AC wall outlet.

A progress bar appears on the main and external displays. While charging, the battery icon at the top right-hand corner of the displays repeatedly fills to show that the battery is being charged.

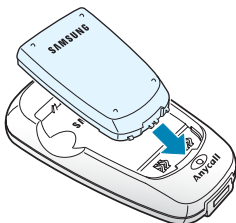
- When charging is finished, disconnect the adapter from the power outlet and disconnect it from the phone by pressing the grey tabs on both sides of the connector and pulling the connector out.



## Charging the Battery Using the Battery Charger

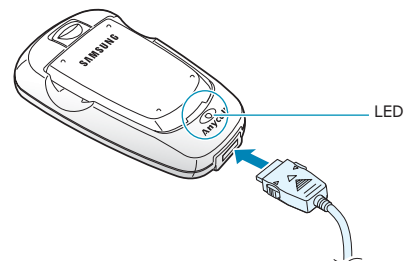
Using the battery charger, you can charge the battery alone.

- Insert the battery alone into the slot of the battery charger ensuring that the terminals on the battery are in contact with those on the charger. Push the battery down until it clicks into place.



- Plug the connector of the travel adapter into the jack at the bottom of the charger.

The small light, LED, on the charger turns on.

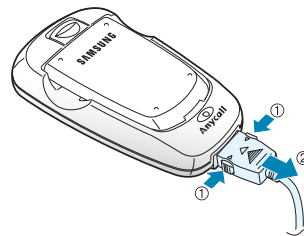


- Plug the adapter into a standard AC wall outlet.

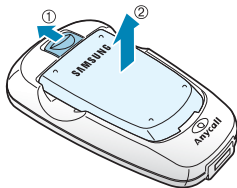
You can see the LED on the charger indicating the charging progress by the following colours:

- Red: the battery is charging.
- Green: the battery is completely charged.

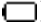
- When charging is finished, unplug the adapter both from the power outlet and from the charger.



5. Remove the battery from the battery charger.




## Low Battery Indicator

When the battery is weak and only a few minutes of talk time remain, the battery sensor informs you in the following ways: an empty battery icon flashes (  ), you hear a warning tone and a message repeats at regular intervals on the display.

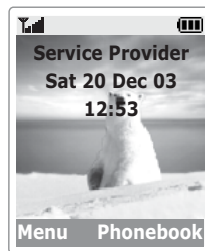
When the battery becomes too weak for the phone to operate, it switches off automatically.

## Switching the Phone On or Off


To switch the phone on:

1. Open the phone.
2. Press and hold the  key until the phone switches on.
3. If the phone asks for a PIN, enter the PIN and press the **Ok** soft key. For further details, see page 143.



The phone searches for your network and after finding it, the current date and time appear on the main and external displays. Now, you can make or receive a call.



**Note:** To change the language, use the **Language** menu (**Menu 4.3**). For further details, see page 93.

To switch the phone off, press and hold the  key until the power-off animation displays.

## Selecting Functions and Options

Your phone offers a set of functions that allow you to customise it. These functions are arranged in menus and sub-menus, accessed using the two soft keys marked  and . Each menu and sub-menu allows you to view and alter the settings of a particular function.

The roles of the soft keys vary according to the function you are currently using; the labels or icons on the bottom line of the display just above the keys indicate their current roles.

Example:





Press the left soft key to access the menu functions.

Press the right soft key to access the Phonebook feature.

To view the various functions and options available and to select the one you want:

1. Press the appropriate soft key.


To	Press the
select the: <ul style="list-style-type: none"><li>• function displayed</li><li>• option highlighted</li></ul>	<b>Select</b> soft key.
view the next function or highlight the next option on a list	Down key.
move back to the previous function or option on a list	Up key.
move back up one level in the structure	 soft key
return to Idle mode	 key.

In some functions, you may be asked for a password or PIN. Enter the required code and press the **Ok** soft key.

# Call Functions

## Making a Call

### Using the Number Keypad


When the idle screen is displayed, enter the area code and phone number, and press the  key.

**Note:** If you have set the **Auto redial** menu (**Menu 4.5**) to **On**, the number is redialled automatically up to ten times if the person you called does not answer or the line is busy. See page 97 for further details.

### Correcting the Number

To clear	Press the
the last digit displayed	<b>C</b> key.
any other digit in the number	Left or Right key until the cursor is immediately to the right of the digit to be cleared and press the <b>C</b> key. You can also insert a missing digit simply by pressing the appropriate key.
the whole display	<b>C</b> key and hold it down for more than one second.

## Making an International Call

1. Press and hold the **0** key for the international prefix. The + character appears.
2. Enter the country code, area code and phone number and press the  key.


## Making a Call from Phonebook

You can store the names and phone numbers called regularly in the SIM card and phone memories, which are collectively called Phonebook. Simply select a name to recall the associated number. For further details about the Phonebook feature, see page 51.




## Using the Call Logs

The phone stores up to 20 numbers you dialled, received or missed chronologically. The last number is saved in the first position. If the same number occurs more than once, only the latest occurrence is saved.

To recall any of these numbers:

1. Press the  key in Idle mode to access the call log list.
2. Use the Up and Down keys to scroll through the list until the number you want highlights.

The call logs are listed with the following icons:

-  : Dialled calls
-  : Received calls
-  : Missed calls

3. To dial the number, press the  key.

To view each call record, see “Call Records” on page 82.

## Viewing Missed Calls

If you have a subscription that includes the Caller Line Identification (CLI) feature and you are unable to answer a call for any reason, you can find out who is calling you so that you can call the person back.

The number of missed calls displays on the idle screen immediately after a call is missed.

To view the missed calls immediately:

1. If the folder is closed, open it.


2. Press the **View** soft key.

The list of the missed calls displays.

3. If necessary, scroll to the number you want by pressing the Up or Down key.

4. To dial the number, press the  key.


To use the missed call options, see “Missed Calls” on page 82.

**Note:** To clear the missed call notification on the display, press the  key. When you also have new messages, the right soft key indication changes in the following order: **View**, **Message**, and then **Phonebook**.

## Speed-Dialling from Phonebook

Once you have stored numbers in Phonebook, you can dial a number simply by pressing one or two keys. For further details, see page 56.


## Ending a Call

When you want to finish your call, briefly press the  key or close the folder.

## Answering a Call

When somebody calls you, the phone rings and displays the incoming call animation.


If the caller can be identified, the caller's phone number, or name if stored in your Phonebook, displays.

To answer a call, open the folder. If it is already open, press the  key or **Accept** soft key.

**Note:** You can answer a call while using the Phonebook or menu features. The current operation stops.



## Rejecting a Call

To reject an incoming call, press the  key or **Reject** soft key.

If the **Side key** option is set to **Reject**, you can press and hold one of the Volume keys on the left side of the phone to reject an incoming call; see page 97.

## Adjusting the Volume

During a call, if you wish to adjust the earpiece volume, use the Volume keys on the left side of the phone.

Press the ▲ key to increase the volume level and the ▼ key to decrease the level.



In Idle mode with the folder open, you can adjust the key volume using the ▲ and ▼ keys.

When a call comes in, you can reject the call or mute the call ringer by pressing and holding one of the Volume keys, depending on your setting of the **Side key** menu (**Menu 4.6**). For further details, see page 97.

## Accessing Options During a Call


Your phone provides a number of control functions that you can use during a call.

### Switching the Microphone Off (Mute)

You can temporarily switch your phone's microphone off so that the other person cannot hear you.

Example: You may wish to say something to another person in the room but do not want the calling person to hear you.

1. Press the **Options** soft key.
2. When **Mute** highlights, press the **Select** soft key.

The Mute icon () appears on the bottom line of the display and your correspondent can no longer hear you.

To switch the microphone back on:

1. Press the **Options** soft key.
2. When **Unmute** highlights, press the **Select** soft key.

The Mute icon disappears and your correspondent can hear you.

## Muting/Sending Key Tones

You can turn the key tones off or on during a call. When the **Mute keys** option is selected, your phone does not transmit the key tones. It allows you to press keys without hearing annoying key tones during a call.


To communicate with answering machines or computerised telephony systems, the **Send keys** option must be selected.

## Putting a Call on Hold

You can place the current call on hold whenever you want. You can make another call while you have a call in progress if this service is supported by the network.

To place a call on hold, simply press the **Hold** soft key. You can reactivate the call whenever you want by pressing the **Retrieve** soft key.

To make a call while you have a call in progress:

1. Enter the phone number that you want to dial or look it up in Phonebook.
2. Press the  key to dial the second call. The first call is automatically put on hold.

Or alternatively:


1. Put the current call on hold by pressing the **Hold** soft key.
2. Make the second call in the normal way.

Of these two calls, one is active and the other is on hold and you can switch between the calls.

To switch between the two calls, simply press the **Swap** soft key.

The current call is placed on hold and the call on hold is reactivated so that you can continue conversing with the other person.


To end the call on hold, press the **Options** soft key and select the **End held call** option.


When you want to finish, end each call normally by pressing the  key.

## Answering a Second Call

You can answer an incoming call while you have a call in progress, if this service is supported by the network and you have activated the **Call waiting** option (see page 119). You will be notified of an incoming call by a call waiting tone.

To answer a call while you have a call in progress:

1. Press the  key to answer the incoming call. The first call is automatically put on hold.
2. To switch between the two calls, press the **Swap** soft key.
3. To end the call on hold, press the **Options** soft key and select the **End held call** option.

To end the current call, press the  key. The call on hold is automatically reconnected to you.

## Transferring a Call

You can transfer the current call to the call on hold if this service is supported by the network, so that the callers can talk to each other. You are disconnected from both of them.

1. During a call, answer or make a call in the normal way, and press the **Options** soft key.
2. Press the Up or Down key to select the **Transfer** option and press the **Select** soft key.

The two people are connected to each other.

## Searching for a Number in Phonebook

You can search for a number in your Phonebook during a call.

1. Press the **Options** soft key.
2. If necessary, press the Up or Down key to highlight the **Phonebook** option. Press the **Select** soft key.
3. Select the **Find name** option and press the **Select** soft key.

The Phonebook entries are listed.

4. Enter the first few letters of the name that you want to find.

**Note:** You can also scroll through Phonebook from the beginning, by pressing the Up or Down key.

The Phonebook entries are listed starting with the first entry matching your input.

5. To view the highlighted entry, press the **Ok** soft key.

For further details about the Phonebook feature, see page 51.

## Using the Message Service

You can read or write a new message during a call.

1. Press the **Options** soft key.
2. Press the Up or Down key to highlight the **Message** option. Press the **Select** soft key.
3. To read a received message, select the **Inbox** option, and then scroll to the message that you want to read.

To view a sent message, select the **Outbox** option, and then scroll to the message that you want to read.

To write a new message, select the **New message** option.

4. Press the **Select** soft key.

For further details about the SMS feature, see page 70.

## Making a Multi-party Call

A multi-party call feature is a network service that allows up to six people to take part simultaneously in a multi-party or conference call. For more information, contact your service provider.

### Setting up the Multi-party Call

1. Call the first participant in the normal way.
2. Call the second participant in the normal way. The first call is automatically put on hold.
3. To join the first participant to the multi-party call, press the **Options** soft key and select the **Join** option. Press the **Select** soft key.
4. To add a new person to the multi-party call, call the person in the normal way. Then press the **Options** soft key and select the **Join** option. Press the **Select** soft key.

You can add incoming callers by answering the call and selecting the **Join** option. Repeat as needed.

### Having a Second Call During a Multi-party Call

To answer or make a call when you have the multi-party call:

1. To place the multi-party call on hold, press the **Hold** soft key.
2. Answer or make a call in the normal way.
3. You can reactivate the call on hold by pressing the **Retrieve** soft key.

To end the multi-party call on hold, press the **Options** soft key and select the **End held multiparty** option.

To answer an incoming call when you have the multi-party call in progress and the call on hold:

1. Press the **Accept** soft key.
2. Select the **End held** option to end the call on hold.  
  
Or, select the **End current** option to end the call in progress.
3. Answer the new call by pressing the **☎** key.

### Having a Private Conversation With One Participant


1. Press the **Options** soft key and select the **Split** option. Press the **Select** soft key.
2. Press the Up or Down key to highlight a participant and press the **Select** soft key.

Now you can talk privately to that person. The other participants can continue to converse with each other.

3. To return to the multi-party call, press the **Options** soft key and select the **Join** option.
4. Press the **Select** soft key.

All of the multi-party call participants can now hear each other.

### Removing One Participant

1. Press the **Options** soft key and select the **Remove** option.
2. Press the Up or Down key to highlight a participant and press the **Select** soft key.  
The call ends with that participant, but you can continue to talk to the other participants.
3. End the multi-party call by closing the folder or pressing the  key.

### Using the Ear-microphone

With the ear-microphone, you can make or answer a call without holding the phone.

When you connect the ear-microphone to the jack at the left side of the phone, the button on the ear-microphone works as listed below:

To	Press
redial the last call	the button twice in Idle mode.
answer a call	and hold the button when you receive the call.
end a call	and hold the button when you have finished the call.

## Entering Text


The phone allows you to enter characters for messages and names in Chinese and English. To enter Chinese text, the phone provides several widely used pronunciation based (Pinyin) and character shape based (Stroke) input methods to meet the preferences of different users, allowing for greater convenience and ease of use.

You can also enter any combination of Chinese characters, alphabets, numbers, and special symbols including punctuation marks.

Your phone has the following text input modes:

- Pinyin mode
- Chinese Simplified Stroke mode
- Quick English mode (T9 mode)\*
- English mode
- Chinese Traditional Stroke mode
- Number mode
- Symbolic mode
- Add word mode

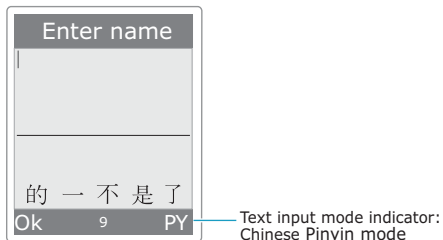
Directions for using each of the text input modes appears later in this section.

\*  is a registered Trademark of Tegic Communications, Inc. and is licensed under U.S. Patent 5,818,437/5,953,541/6,011,554.

## Changing the Text Input Mode

When you are in a field that allows character entry, you should notice the text input mode indicator on the bottom of the display.



Example: Entering a name in Phonebook



To change to another text input mode:

1. Press the right soft key indicating the current text input mode.
2. Scroll to the mode you want to use by pressing the Up or Down key.

You can use the **Add word** option to add new words into the T9 dictionary. See page 46.

**Note:** If you want to exit the menu without changing the mode, press the  soft key or  key.

3. Press the **Select** soft key to confirm the highlighted text input mode.
4. The selected text input mode indicator on the bottom of the display.

## Using Pinyin Mode

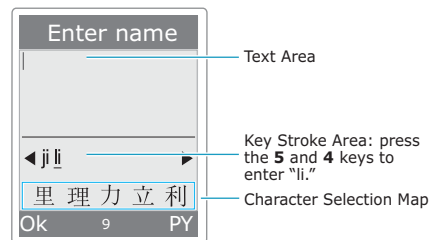
Pinyin is a system to mark Chinese pronunciation in Latin alphabets. With the pinyin input method, you can enter Chinese characters by entering the pinyin string from the phone keypad and the phone automatically presents the matching alternatives.

This mode allows you to enter Pinyin characters with only one key press per letter.

### Typing Characters in Pinyin Mode

1. Press keys corresponding to the phonetic spelling, referring to the Roman letters printed on the keys. Notice that the choices in the Character Selection Map change.

Example: Typing “力” in the Pinyin mode

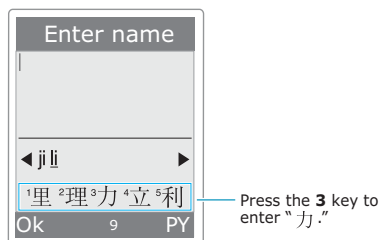


2. If there are more than one pinyin spelling corresponding to your keypress, press the Left or Right key to select the spelling you want.

- If you cannot find the character you want from the display, press the Up or Down key to scroll through choices in the Character Selection map.

When the character you are typing appears in the Character Selection Map, you may select it, without completing the Pinyin spelling or entering the tone for the character.

- To select a character, press the **1** key to activate the Character Selection Map. A number, 1 to 5, is added to the beginning of a corresponding character. With the Character Selection Map being activated, a normal press on the **1** to **5** key selects the corresponding character.



#### Notes:

- To insert a space when entering a text, press the **#** key when the cursor blinks in the Text Area.
- To remove the activate character in the Character Selection Map, press the **C** key.

## Scrolling

To move the cursor left or right through your text message, press the Left or Right key.

## Inserting a Space

Insert a space between the characters, press the **#** key in Text Area.

## Clearing Strokes and Characters

Press the **C** key or more times to remove strokes to the left. Once the Pinyin Area is empty, pressing the **C** key removes characters from the Text Area.

## Using Chinese Stroke Modes

These modes allow you to enter individual Chinese strokes, in written order, from top to bottom and from left to right. Your phone provides Chinese Simplified Stroke mode and Chinese Traditional Stroke mode.

The two modes work similarly, but the characters that appear on the display may differ.

Even though there are many different strokes used to create Chinese characters, the strokes are classified into 5 basic categories; heng, shu, pie, dian and zhe. The basic strokes are printed on the keypad, on keys **1** to **5**.

To enter a stroke, press the key printed with the printed with the stroke that most closely represents the exact stroke you want.

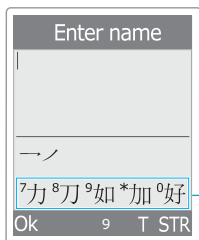
The table shows the stroke/key relationship:

Categories	Keys	Strokes Represented in Each Category
→		— ✓
		J
/		/ - )
\		\ \ /
→		T / → J ↗ L ↖ ↓ ↘ Z Y )   <   > U V W

## Typing Strokes and Characters in Stroke Mode

1. To type a character, press keys corresponding to its component strokes. Press keys on the handset in the order that you would write the strokes, using one press per desired stroke.

Example: Typing "力" in the Chinese Stroke mode



Press the **5** key to enter  
" — , " and then the **3** key  
to enter " / . "

2. The phone displays your strokes in the Key Stroke Area and offers character choices in the Character Selection Map. As you enter strokes, notice that the choices in the Character Selection Map change.

To scroll through choices in the Character Selection Map, press the Up or Down key.

**Note:** If you are uncertain of the order of one or more strokes, press the **6** key in place of each questionable stroke. Continue entering strokes until the character is displayed in the Character Selection Map or until you have finished the character.

3. When the character you are typing appears in the Character Selection Map, you may select it without finishing the stroke sequence for the character. Characters displayed in the Character Selection map correspond to keys **7** to **0** on the keypad. To select a character from the Character Selection Map and add it to your message, press the corresponding key **7** to **0**.

## Scrolling

To move the cursor left or right through your text message, press the Left or Right key.

## Clearing Strokes and Characters

Press the **C** key one or more times to remove strokes to the left. Once the Stroke Area is empty, pressing the **C** key removes characters from the Text Area.



## Using Quick English Mode

To type a word, press keys corresponding to the letters you need. Remember the following as you are typing:

1. Start entering the word by pressing keys **1** to **0**. Press each key only once for each letter.

Example: To enter "hello" in Quick English mode, press the **4**, **3**, **5**, **5**, and **6** keys.

The word you are typing appears on the display. It may change with each key that you press.

2. Enter the whole word before editing or deleting any keystrokes.
3. If the word is correct, start entering the next word. Otherwise, press the **0** key repeatedly to display alternative word choices for the keys that you have pressed.

Example: Both "of" and "me" have the sequence of **6** and **3**. The phone displays the most commonly used choice first.

4. Insert a space between words by pressing the **#** key.

If **Spell** appears above the left soft key while you are entering text, the word does not exist in the T9 dictionary. To type words not found in Quick English mode, change the text input mode to English mode, or proceed as follows:

1. Press the **Spell** soft key, or press the right soft key and select the **Add word** option.

2. Enter the word you want to add using English mode (see page 48) and press the **Ok** soft key.

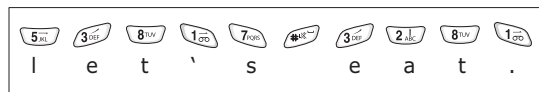
The word is saved in the T9 dictionary and inserted in the input field.

3. Continue entering other words in Quick English mode.

### Smart Punctuation

To enter periods, hyphens or apostrophes, press the **1** key. The T9 mode applies rules of grammar to insert the correct punctuation.

Example: The **1** key is used twice to display two punctuation marks.



### Changing the Case

To shift the case of the next letter(s) that you type, press the **✕** key. There are three cases; Lower Case, Initial Capital and Capital Lock.

### Scrolling

- To move the cursor to the left or right within the text, press the Left or Right key.
- To scroll through alternative word choices for the keys you have entered, press the **0** key.

### Clearing Letters and Words

Press the **C** key one or more times to clear letters to the left. Press and hold the key to clear the display.

## Using English Mode

When typing in English mode, press the key labelled with the required letter:

- Once for the first letter
- Twice for the second letter
- And so on

**Example:** To display the letter "C", quickly press the **2** key three times. To display the letter "K", press the **5** key twice. This method is called Multi-tap typing.

**Note:** The cursor moves to the right when you press a different key. When entering the same letter twice or a different letter on the same key, just wait a few seconds for the cursor to move to the right automatically, and then enter the next letter.

Refer to the table below for the list of characters assigned on each key:

### List of the characters available

Key	Characters in the Order Displayed	
	Upper case	Lower case
1	: ; ' ! = " /	. , ? ! 1 - ' @ :
2	A B C 2 Ä Å Æ	a b c 2 à ä å æ
3	D E F 3 É Δ	d e f 3 é è
4	G H I 4 Ø	g h i 4 ì
5	J K L 5 Λ	j k l 5
6	M N O 6 Ñ Ö Ø Æ	m n o 6 ñ ò ö ø
7	P Q R S 7 Π Σ	p q r s 7 β
8	T U V 8 Ü Φ	t u v 8 ü ü
9	W X Y Z 9 Ψ Ω	w x y z 9
0	0 * < > % # £	0 + ( ) & _ \$

## Changing the Case

To shift the case of the next letter(s) that you type, press the **✕** key. There are three cases; Lower Case, Initial Capital and Capital Lock.

## Inserting a Space

To insert a space between the words, press the **#** key.

## Scrolling

To move the cursor to the left or right within the text, press the Left or Right key.

## Clearing Letters and Words

Press the **C** key one or more times to clear letters to the left. Press and hold the key to clear the display.

## Using Number Mode

Number mode enables you to enter numbers in your text. Press the keys corresponding to the digits you want to enter.

## Using Symbolic Mode

Symbolic mode enables you to enter symbols in your text.

To	Press the
display more symbols	Up or Down key.
enter a symbol	corresponding number key.
return to the previous text input mode	<b>Ok</b> or <b>↩</b> soft key.

# Phonebook

Phonebook offers the following features:

- **Phonebook:** allows you to create, find or manage Phonebook entries, and set up the speed-dialling feature.
- **Management:** allows you to create or remove your own number, set up caller groups and check the memory status.
- **Services:** allows you to use the service directory depending on your SIM card.

These features can be accessed by pressing the **Phonebook** soft key, then scrolling with the navigation keys.

## Creating a Phonebook Entry

You can store phone numbers and the corresponding names in the memory of your SIM card. In addition, you can store up to 500 names in the phone memory and each name can be associated with up to five numbers.

There are two ways to store a number:

- Using the **Save** soft key in Idle mode
- Using the **Add entry** option in the **Phonebook** menu

## Storing a Number in Idle Mode

As soon as you start to enter a number, **Save** appears above the left soft key to allow you to store the number in Phonebook.

1. Enter the number you want to save.

### Notes:

- If you make a mistake while entering a number, correct it using the **C** key. For further details, see page 26.
- To insert a dialling pause for special phone services, such as banking by phone, press and hold the **\***  key. "P" is displayed to indicate the pause.

2. When you are sure that the number is correct, press the **Save** soft key.
3. Select the memory where the number is to be stored, either **Phone** or **SIM** and press the **Select** soft key.

**Note:** If you change phones, any numbers stored in your SIM card memory will automatically be available with the new phone, whereas any numbers stored in the phone's memory must be stored again.

4. If you select **SIM** in step 3, go to step 5.

If you select **Phone** in step 3, choose a number type using the Up or Down key and press the **Select** soft key.

5. Enter the associated name.

For information about how to enter characters, see page 39. When you are satisfied, press the **Ok** soft key.

6. If you select **Phone** in step 3, go to step 7.

If you select **SIM** in step 3, enter the location number and press the **Ok** soft key.

7. If you want to change the entry, use the options. for information about how to do it, see page 54. If you want to return to Idle mode, press the **Back** soft key or the **End Call** key.

## Storing a Number Using the Phonebook Menu

1. In Idle Mode, press the **Phonebook** soft key.
2. Scroll to the **Add entry** option by pressing the Up or Down key and press the **Select** soft key.
3. Continue the procedure from step 1 on page 52 to store the number.


## Searching for and Dialling a Number in Phonebook

1. When the idle screen displays, press the **Phonebook** soft key.
2. When **Find name** option highlights, press the **Select** soft key.
3. Enter the first few letters of the name that you want to find and press the **OK** soft key.

The Phonebook entries are listed, containing with the entry matching your input.

4. If necessary, press the Up or Down key to scroll to the entry you want.

5. Once you have found the entry, press the **Ok** soft key.

6. <b>To</b>	<b>Press the</b>
dial the displayed number	 key.
change the Phonebook entries	<b>Options</b> soft key. For further details, see page 54.

## Changing the Phonebook Entries

### Changing the Phone memory entries

Scroll to the category you want to edit by pressing the Left or Right key. Following categories are available and you can edit each category's information by pressing the **Options** soft key.

Category	Options
Mobile	Edit number
Home	Change name
Office	Send message (only if it has a number)
Fax	Copy (only if it has a number)
Other	Delete entry
	For these options, refer to the SIM memory entry's options.
E-Mail	Enter or edit e-mail address
Group	Set one of the groups or no group
Graphic	Set one of the images or no image
Alert	Set one of the melody or not assign

### Changing the SIM memory entries

To change the SIM memory entry's information, press the **Options** soft key.

The following options are available:

#### Edit number

This option allows you to change the number. You can also add a new number if none has been stored for the selected category.

#### Change name

This option allows you to change the name of the entry.

To clear the old name, press the **C** key. For more information about how to enter characters, see page 39.

#### Send message

This option allows you to send a message to the number. For more information about how to send a message, see page 74.

#### Copy

This option allows you to copy the entry from the phone's memory to the SIM card, and vice versa.

#### Delete entry

This option allows you to delete the entry from Phonebook. To confirm the deletion, press the **Yes** soft key. Otherwise, press the **No** soft key.



## Speed-dialling

You can set up to eight speed-dial entries and then dial them easily whenever you want, simply by pressing the associated number key.



### Setting Up Speed-dial Entries

1. When the idle screen is displayed, press the **Phonebook** soft key.
2. Scroll to **Speed list** by pressing the Up or Down key and press the **Select** soft key.
3. Press the Up or Down key to scroll to an empty location and press the **Select** soft key.
4. When the **Edit number** option highlights, press the **Select** soft key.
5. Enter a phone number and press the **Ok** soft key. Or,


To retrieve a number from your Phonebook, press the **Phonebook** soft key. Select an entry from the list and press the **Ok** soft key. Press the **Ok** soft key to save it.

6. When you have finished, press the  soft key or the  key to exit.

### Editing the Speed-dial Entries

1. When the idle screen is displayed, press the **Phonebook** soft key.
2. Scroll to **Speed list** by pressing the Up or Down key and press the **Select** soft key.
3. Select the speed-dial entry you want to edit from the list and press the **Select** soft key.
4. Select one of the following menus by pressing the Up or Down key and press the **Select** soft key:
  - **Edit number:** allows you to change the number.
  - **Change name:** allows you to change the name of the entry.
  - **Delete:** allows you to clear the setting so that no number is assigned to the key.
5. When you have finished, press the  soft key or the  key to exit.

### Using the Speed-dial Feature

When the idle screen is displayed, press the number key, **2** to **9**, assigned to the speed-dial entry and press the  key. You can also press and hold the number key.

**Note:** The **1** key is reserved for your Voice Mail server number.

## Dialling a Number Stored in the SIM Card

Once you have stored phone numbers in your SIM card, you can dial them easily whenever required.

To dial a number stored in the SIM card:

1. Enter the number of the SIM card location where the number you want to dial is stored.

2. Press the **#** key.

The display shows the name and number stored in that location.

3. Press the **Dial** soft key or the  key.

## Copying Entries from the SIM Card to the Phone's Memory

You can copy all of the numbers stored in the SIM card to the phone's memory.



1. When the idle screen is displayed, press the **Phonebook** soft key.

2. Scroll to **Copy all to phone** by pressing the Up or Down key and press the **Select** soft key.

3. When a confirming message appears, press the **Yes** soft key to copy.



The numbers are copied to the phone's memory, labelled with the type, **Mobile**, by default.

Otherwise, press the **No** soft key.

4. When you have finished, press the  soft key or the  key to exit.

## Deleting the Phonebook Entries

You can delete Phonebook entries selectively depending on the memory location, or all together at once.



1. When the idle screen is displayed, press the **Phonebook** soft key.
2. Scroll to **Delete all** by pressing the Up or Down key and press the **Select** soft key.
3. Select one of the following options by pressing the Up or Down key and press the **Select** soft key:
  - **SIM**: deletes all of the entries in the SIM card.
  - **Phone**: deletes all of the entries in the phone's memory.
  - **SIM + Phone**: deletes all of your Phonebook entries.
4. When a confirming message appears, press the **Yes** soft key to delete.  
Otherwise, press the **No** soft key.
5. You need to enter a password. The password is your phone lock password.
6. When you have finished, press the  soft key or the  key to exit.

## Editing Group Settings

You can change the settings of the five predefined caller groups.

1. When the idle screen is displayed, press the **Phonebook** soft key.
2. Press the Left or Right key to access the **Management** menu.
3. Scroll to **Group setting** by pressing the Up or Down key and press the **Select** soft key.
4. Select a caller group by pressing the Up or Down key and press the **Select** soft key.
5. Scroll to a setting option by pressing the Up or Down key and press the **Select** soft key.



The following options are available:

- **Melody:** allows you to select a melody to sound when a call comes in from a member in the group.
  - **Change name:** allows you to change the name of the group; for further details about how to enter characters, see page 39.
  - **View image:** allows you to view an image to display when a call comes in from a member in the group.
6. Change the setting as required and press the **Select** soft key.
  7. Repeat steps 5 and 6 to change the other options.
  8. When you have finished, press the  soft key or the  key to exit.

## Using Other Phonebook Features



### Storing Your Own Number

You can store your own phone number(s) with a name. The number of phone numbers that you can store may vary depending on your SIM card.

1. When the idle screen is displayed, press the **Phonebook** soft key.
2. Press the Left or Right key to access the **Management** menu.
3. When **Own number** highlights, press the **Select** soft key.
4. Scroll to an empty location by pressing the Up or Down key and press the **Select** soft key.
5. When **Edit number** highlights, press the **Select** soft key.
6. Enter your number and press the **Ok** key.
7. To assign a name, press the Down key to move to **Change name** and press the **Select** soft key.
8. Enter a name and press the **Ok** soft key.
9. When you have finished, press the  soft key or the  key to exit.





To remove one of your numbers:

1. Select the entry you want to delete from the Own number list and press the **Select** soft key.
2. Scroll to **Delete** by pressing the Up or Down key and press the **Select** soft key.
3. When a confirming message appears, press the **Yes** soft key to delete the number.  
Otherwise, press the **No** soft key.
4. When you have finished, press the  soft key or the  key to exit.

## Checking the Memory Status


You can check how many names and numbers are stored in Phonebook, SIM card and phone's memories, and how many free locations remain.

1. When the idle screen is displayed, press the **Phonebook** soft key.
2. Press the Left or Right key to access the **Management** menu.
3. Scroll to **Memory status** by pressing the Up or Down key and press the **Select** soft key.  
The display shows the number of phone and SIM entries used, followed by the total capacity of each memory.
4. When you have finished, press the  soft key or the  key to exit.

## Dialling the Service Directory

You can view the numbers in the Service Directory and make calls to them, if necessary.

**Note:** This feature may not be available depending on your SIM card.

1. When the idle screen is displayed, press the **Phonebook** soft key.
2. Press the Left or Right key to access the **Services** menu.
3. When **Service directory** is highlighted, press the **Select** soft key.
4. If necessary, scroll to a number by pressing the Up or Down key and press the  key to dial the number.

# Using the Menus

The phone offers a range of functions that allow you to tailor it to your needs. These functions are arranged in menus and sub-menus.

## Accessing a Menu Function

The menus and sub-menus can be accessed by pressing the **Menu** soft key in Idle mode, then scrolling with the navigation keys.

1. In Idle mode, press the **Menu** soft key to access Menu mode.
2. Scroll through the main menus using the Left or Right key.
3. Find the sub-menu that you wish to use by scrolling with the Up or Down key.

4. Press the **Select** soft key to access the sub-menu.

If the menu that you have selected contains further sub-menus, repeat this step.

5. Scroll to the option you want to choose with the Up or Down key.
6. Press the **Select** soft key to choose the setting.

**Note:** You can return to the previous menu level by pressing the **5** soft key.

You can also access the menus and sub-menus by entering the corresponding menu number.

Example: To access the **Missed calls** menu, press the **Menu** soft key, **2, 1** in Idle mode.

**Note:** The numbers assigned to each menu function are indicated on the list below.

## List of Menu Functions

Various menus let you check or change your phone settings. The following list shows the menu structure.

The numbers assigned to each menu may not match the menu number on the phone. It depends on the services supported by your SIM card.

### 1. Messages (see page 70)

- 1.1 Inbox
- 1.2 Outbox
- 1.3 New message
- 1.4 Voice mail
  - 1.4.1 Connect to voice mail
  - 1.4.2 Voice server number
- 1.5 Preset messages
- 1.6 Settings
  - 1.6.1 Service centre
  - 1.6.2 Validity period
  - 1.6.3 Message type
  - 1.6.4 Common
- 1.7 Memory status
- 1.8 Delete all
- 1.9 Broadcast
  - 1.9.1 Read
  - 1.9.2 Receive
  - 1.9.3 Channel
  - 1.9.4 Language

**2. Call records (see page 82)**

- 2.1 Missed calls
- 2.2 Received calls
- 2.3 Dialed calls
- 2.4 Delete all
  - 2.4.1 Missed calls
  - 2.4.2 Received calls
  - 2.4.3 Dialed calls
  - 2.4.4 All call records
- 2.5 Call time
  - 2.5.1 Last call time
  - 2.5.2 Total sent
  - 2.5.3 Total received
  - 2.5.4 Reset timers
- 2.6 Call costs\*
  - 2.6.1 Last call cost
  - 2.6.2 Total cost
  - 2.6.3 Max cost
  - 2.6.4 Reset counters
  - 2.6.5 Set max cost
  - 2.6.6 Price/Unit

**3. Sound settings (see page 86)**

- 3.1 Incoming calls
  - 3.1.1 Melody
  - 3.1.2 Ring volume
  - 3.1.3 Alert type
- 3.2 Messages
  - 3.2.1 Tone
  - 3.2.2 Alert type
  - 3.2.3 Repetition
- 3.3 Power on/off
- 3.4 Connection tone
- 3.5 Key tone
- 3.6 Minute minder
- 3.7 Quiet mode

\* Shows only if supported by your SIM card.

**4. Phone settings (see page 90)**

- 4.1 Greeting message
- 4.2 Display
  - 4.2.1 Wallpaper
  - 4.2.2 Skin
  - 4.2.3 Backlight
  - 4.2.4 LCD brightness
- 4.3 Language
  - 4.3.1 Text language
  - 4.3.2 Input mode
- 4.4 Security
  - 4.4.1 PIN check
  - 4.4.2 Change PIN
  - 4.4.3 Phone lock
  - 4.4.4 Change password
  - 4.4.5 SIM lock
  - 4.4.6 FDN mode\*
  - 4.4.7 Change PIN2\*
- 4.5 Auto redial
- 4.6 Side key
- 4.7 Fax mode
- 4.8 Reset settings
  - 4.8.1 Sound settings
  - 4.8.2 Phone settings
  - 4.8.3 All settings

\* Shows only if it is supported by your SIM card.

## 5. Organiser (see page 100)

- 5.1 New memo
- 5.2 Calendar
- 5.3 To do list
- 5.4 Clock
  - 5.4.1 Set time
  - 5.4.2 Set date
  - 5.4.3 Set world time
  - 5.4.4 Set format
- 5.5 Alarm
- 5.6 Calculator
- 5.7 Conversion
- 5.8 Timer
- 5.9 Stopwatch

## 6. Network services (see page 114)

- 6.1 Call diverting
  - 6.1.1 Divert always
  - 6.1.2 Busy
  - 6.1.3 No reply
  - 6.1.4 Unreachable
  - 6.1.5 Cancel all
- 6.2 Call barring
  - 6.2.1 All outgoing
  - 6.2.2 International
  - 6.2.3 International except to home
  - 6.2.4 All incoming
  - 6.2.5 Incoming while abroad
  - 6.2.6 Cancel all
  - 6.2.7 Change barring password
- 6.3 Call waiting
  - 6.3.1 Voice calls
  - 6.3.2 Fax calls
  - 6.3.3 Data calls
  - 6.3.4 Cancel all
- 6.4 Network selection
- 6.5 Caller ID
- 6.6 Active Line\*

\* Shows only if it is supported by your SIM card.

## 7. Funbox (see page 122)

- 7.1 WWW Services\*
  - 7.1.1 Home
  - 7.1.2 Bookmark
  - 7.1.3 Go to URL
  - 7.1.4 Clear cache
  - 7.1.5 Proxy settings
  - 7.1.6 Current proxy
- 7.2 Fun Club
  - 7.2.1 Image
  - 7.2.2 Melody
  - 7.2.3 Gift Box
  - 7.2.4 SFC Home
  - 7.2.5 Image Home
  - 7.2.6 Melody Home
  - 7.2.7 Service Area
- 7.3 Media box
  - 7.3.1 Image
  - 7.3.2 Melody
  - 7.3.3 Delete all
- 7.4 Games
  - 7.4.1 Honey ball
  - 7.4.2 Go! Hamster
  - 7.4.3 Bowling
- 7.5 IrDA
  - 7.5.1 Activation
  - 7.5.2 Send phonebook

## 8. SIM AT \*\*



\* May not be shown or supported by your network service provider.

\*\* Shows only if it is supported by your SIM card.

# Messages


This menu allows you to create, send, read and save messages with the Short Message Service (SMS: text message) and Enhanced Message Service (EMS: message including image, animation or melody). Voice mails are also available.

**Note:** This feature is only available if your service provider's network supports it. Contact your service provider for more information.


Inbox and Outbox share a given amount of memory in your phone or SIM card. When the message memory is full, the New Message icon () blinks and an error message displays. It disappears when you press the  key, but it reappears if you don't delete old messages. In this case, you cannot receive any new messages. You must delete one or more old messages to make room for new messages using the **Delete** option within Inbox or Outbox or the **Delete all** option; for further details, see page 79.

## Inbox (Menu 1.1)




Your phone receives incoming messages and saves them in Inbox. SMS and EMS messages are usually saved in the SIM card, but if the SIM memory is full, the incoming messages will be saved in the phone's memory.

When you receive a new message, the new Message icon () and a text notification showing the number of the message appear on the display. You also hear an alert, depending on the message sound setting; for further details, see page 87.



To read the new message(s) immediately, press the **Message** soft key. The list of the messages appears.

**Note:** To clear the new message notification on the display, press the  key. When you also have missed calls, the right soft key indication changes in the following order: **View**, **Message**, and **Phonebook**.

When the **Inbox** menu (**Menu 1.1**) is selected, the list of messages received displays with the:

- sender's phone number, or name if stored in Phonebook.
- message status;  for a read message,  for a message to read or  for an incomplete message.

To view a message, scroll to it and press the **Select** soft key. The screen shows the:

- date and time when the message was received.
- memory where the message was stored;  for the SIM card or  for the phone's memory.
- message contents.

You can scroll to the next or previous message by pressing the Left or Right key.

To scroll through the message contents, press the Up or Down key. When you highlight an object that includes a melody, the melody is played.

You can choose the following options by pressing the **Options** soft key:

**Delete:** allows you to delete the message.

**Message reply:** allows you to reply by sending a message.

**Call back:** allows you to call the sender back.

**Cut number:** allows you to extract the numbers in the message, so that you can dial a number or save it in your phonebook.

**Cut URL:** allows you to extract the URL addresses, if any, from the message so that you can store them in the Bookmark list.

**Send:** allows you to send the message to another person.

**Edit:** allows you to edit the message.



**Extract media:** You can save media (except the predefined EMS animations and sounds) from the message into your phone's media box. You can use these items when writing a message; for further details, see page 74.

**Transfer:** allows you to transfer the message from the SIM card to the phone's memory.





## Outbox *(Menu 1.2)*

Outbox stores any messages that you have already sent or just saved without sending.

When the **Outbox** menu is selected, the list of messages you have sent or saved displays with the:

- recipient's phone number, or name if stored in Phonebook.
- message status;  for a sent message or  for a message to send.

To view a message, scroll to it and press the **Select** soft key. The screen shows the:

- message status;  for a sent message or  for a message to send.
- memory where the message was stored;  for the SIM card or  for the phone's memory.
- message contents.

You can scroll to the next or previous message by pressing the Left or Right key.

To scroll through the message, press the Up or Down key.

You can choose the following options by pressing the **Options** soft key:

**Delete:** allows you to delete the message.

**Cut number:** allows you to extract the numbers in the message, so that you can dial a number or save it in your phonebook.

**Cut URL:** allows you to extract the URL addresses, if any, from the message so that you can store them in the Bookmark list.

**Send:** allows you to send the message to another person.

**Edit:** allows you to edit the message.

**Transfer:** allows you to transfer the message from the SIM card to the phone's memory.

## New message *(Menu 1.3)*

---

Via this menu, you can write messages, containing text, images and melodies.

### 1. Create a message.

In the first line of the display, you see the number of remaining characters you can enter, the number of current message and the maximum messages you can create, and the font style you set in **Text** option.

**Note:** For further information about how to enter characters, refer to page 39.

### 2. While entering your message, press the **Options** soft key to use the Message options.

### 3. Scroll to an option by pressing the Up or Down key and press the **Select** soft key. The following options are available:

- **Send:** allows you to send the message.
- **Text:** allows you to format the text. Following text attributes can all be combined as required.

Text size: Small/Medium/Large

Text mode: Normal/Underscore/Strikethrough

Bold: On/Off

Italic: On/Off

Alignment: Left/Center/Right

**Note:** The text attributes you can use are different depending on whether you are entering English or Chinese.

- **Add media:** allows you to add pictures, animations and/or melodies to the message. Select a category; **Add picture**, **Add animation** or **Add melody**. You can then choose a factory-set object or an object that you have received from another source and stored in the media box. See page 131.

- **Preset messages:** allows you to add a preset message to your text. Select one of ten messages stored in the **Preset messages** menu (**Menu 1.5**). See page 77.

- **Save message:** allows you to save the message so that it can be sent later. You can read the message in Outbox.

### 4. When you have finished entering your message, choose **Send** from the Message options and press the **Select** soft key.

If you want to just save the message, select **Save message** and then choose the memory location where the message is saved.

### 5. Enter a destination number on the Address screen.

To clear or clear all your input, press or press and hold the **C** key. When you have no input, press and hold the **C** key to move to the previous screen.

You can search for a number in Phonebook by pressing the **Phonebook** soft key.

If you want to send the message to multiple destinations up to 5, press the **Add** soft key and repeat step 5.

- When you have finished entering the numbers, press the **Ok** soft key.

If you did not store the SMS centre number in the current setting group (see page 78), enter the number when prompted to do so and press the **OK** soft key.

The message sent.

**Note:** When the phone fails to send the message, "Error" displays. Press the **Retry** soft key to try again the transmission. Press the **No** soft key to exit, and then the **Save** soft key to save the message in your Outbox.

## Voice mail *(Menu 1.4)*

---

### Storing the Voice Mail Server Number

Before using the voice mail service, you must store the voice mail server number obtained from your service provider.

To save the voice mail server number, select the **Voice mail** menu and **Voice server number** (**Menu 1.4.2**). Enter the voice mail server number and a name, if required, and then press the **Ok** soft key to save it.

### Listening to Your Voice Mail

When you receive a voice mail, your phone displays the voice mail indicator and you hear an alert, depending on the message sound setting; for further information, see page 87.

There are three ways to access your voice mail box:

- In Idle mode, when you receive a new voice mail, press the **Connect** soft key to access your voice mail server and follow the instructions provided.
- In Idle mode, hold the **1** key down to access your voice mail server and follow the instructions provided.
- Call your voice mail server number by accessing the **Connect to voice mail** menu (**Menu 1.4.1**) and follow the instructions provided.

## Preset messages *(Menu 1.5)*

---

Using this menu, you can preset up to ten messages that you use most frequently. When you access this menu, the preset message list displays.

- Scroll to a message or an empty entry by pressing the Up or Down key.
- Press the **Select** soft key and enter a new message or change the old message.

For further details about entering characters, see page 39.

- Press the **Ok** soft key to save the message.



## Settings *(Menu 1.6)*

---

Via this menu, you can set up default SMS information. The following options are available:

**Service centre:** allows you to store or change the number of your SMS centre required when sending messages. You must obtain this number from your service provider.

**Validity period:** allows you to set the length of time your messages are stored at the message centre while attempts are made to deliver them.

**Message type:** allows you to set the message type to Text, Fax, Voice, ERMES, X400, or E-Mail. The network can convert the messages into the selected format.

**Common:** the following options are available:

Reply path: allows the recipient of your SMS message to send you a reply through your message centre, if the service is provided by the network.

Delivery report: allows you to set on or off. When this function is set to on, the network informs you whether or not your message has been delivered.

## Memory status *(Menu 1.7)*

---

You can check the number of SMS or EMS used, followed by the available capacity of phone and SIM memory.

## Delete all *(Menu 1.8)*

---

You can delete all messages stored in the SIM card and phone memories in this menu.

1. Scroll to a message box and place a check mark ahead it by pressing the **Select** soft key.

Selecting **All** places check marks on all of the message boxes.

2. If necessary, repeat step 1 to check another box.
3. When you have finished checking, press the **Ok** soft key.
4. When a confirming message appears, press the **Yes** soft key to delete all of the messages in the box(es).

Otherwise, press the **No** soft key.

## Broadcast *(Menu 1.9)*

---

This network service allows you to receive text messages on various topics, such as the weather or traffic. Messages are displayed immediately as they are received, provided that:

- the phone is in Idle mode
- the **Receive** option is set to **On**
- the message channel is currently active on the channel list

When you get broadcast messages, you can see the messages in Idle mode. If it is short you can see the display, otherwise, press the **New CB** soft key to read the message.

The following options are available:

**Read:** lets you read the received broadcast messages.

**Archive:** shows the list of the messages you saved from the temporary list.

**Temporary:** shows the latest messages. These messages will be gone when the phone is switched off.

If the message is long, press the UP or Down key.

When you see one of the message, press the **Options** soft key to access following options.

**Cut number:** shows the list of numbers included in the message.

**Save (Temporary only):** saves this message to Archive list.

**Delete:** delete this message.

**Delete All:** delete all message in the list.

**Receive:** allows you to turn the reception of broadcast messages on or off.

**Channel:** the check mark ahead of **All** indicates enable of channel.

To enable or disable this channel press the **Select** soft key, then select **Enable** or **Disable**.

The **Add channel** option allows you to add a new channel to the channel list. Enter the appropriate channel code obtained from your service provider and a title for the channel.

**Language:** selects a language you prefer. Then, You can get cell broadcast messages only in the language you selected.

# Call Records

In this menu, you can view the:

- calls you missed, received or dialled.
- cost of your calls.
- length of your calls.


## Missed calls *(Menu 2.1)*

This option lets you view the last 20 unanswered calls if the caller line identification is available.

The number, or name if available, displays together with the date and time when the call was missed.

By pressing the **Options** soft key, you can also:

- delete the current call record from the list.
- delete all of the call records.
- paste the number into Phonebook.

You can also dial the number by pressing the  key.


## Received calls *(Menu 2.2)*

This option lets you view the last 20 received calls if the caller line identification is available.

The number, or name if available, displays together with the date and time when the call was received.

By pressing the **Options** soft key, you can also:

- delete the current call record from the list.
- delete all of the call records.
- paste the number into Phonebook.

You can also dial the number by pressing the  key.


## Dialled calls *(Menu 2.3)*

This option lets you view the last 20 dialled numbers.

The number, or name if available, displays together with the date and time when the call was made.

By pressing the **Options** soft key, you can also:

- delete the current call record from the list.
- delete all the call records.
- paste the number into Phonebook.

You can also dial the number by pressing the  key.

## Delete all *(Menu 2.4)*

You can delete all of the numbers, selectively depending on the record types or all together.

When a confirming message appears press the **Yes** soft key to confirm. Otherwise, press the **No** soft key.

## Call time *(Menu 2.5)*

This option lets you view the timers for calls made and received.

### Notes:

- If your SIM card supports the ALS feature, you must first select the appropriate line.
- The actual time invoiced for calls by your service provider may vary, depending on network features, rounding-off for billing purposes and others.

The following timers are available:

**Last call time:** the length of the last call.

**Total sent:** the total length of all calls made since the timer was last reset.

**Total received:** the total length of all calls received since the timer was last reset.

You can use the **Reset timers** option to reset the call timers; you must enter the phone password and then press the **Ok** soft key.

**Note:** The password is preset to "00000000." To change this password, see page 95.

## Call costs *(Menu 2.6)*

This feature lets you view the cost of calls.

### Notes:

- This feature is not intended to be used for billing purposes.
- AOC (Advice Of Charge) information may display in Idle mode, depending on your SIM card or service provider.

The following options are available:

**Last call cost:** cost of the last call made.

**Total cost:** total cost of all calls made since the cost counter was last reset. If the total cost exceeds the maximum cost set via the **Set max cost** option, you can no longer make any calls until you reset the counter.

**Max cost:** maximum cost set via the **Set max cost** option (see below).

**Reset counters:** option used to reset the cost counter; you must first enter your PIN2 (see page 144) and then press the **Ok** soft key.

**Set max cost:** option used to enter the maximum cost that you authorise for your calls; you must first enter your PIN2 (see page 144) and then press the **Ok** soft key.

**Price/Unit:** option used to set the cost of one unit; this price per unit is applied when calculating the cost of your calls; you must first enter your PIN2 (see page 144) and then press the **Ok** soft key.

# Sound Settings

You can use the Sound Settings feature to customise various settings, such as the:

- ring tone, volume and type for incoming calls or messages.
- volume for the voice prompt.
- sounds made when your call is connected or when you press a key.
- mode to which your phone switches when you press and hold the # key.

## Incoming calls *(Menu 3.1)*

This option allows you to set up the ringer for incoming calls.

**Note:** If your SIM card supports the ALS feature, you must select the line you wish to change first.

The following options are available:

**Melody:** lets you choose between many different melodies. Each time you select a melody from the list, it plays the melody.

**Ring volume:** allows you to adjust the ring volume. Use the Up and Down keys or the Volume keys on the left side of the phone. The more bars you see, the louder the volume.

**Alert type:** lets you specify how you are informed of any incoming calls.

Melody: the phone rings using the melody selected via the **Melody** option. See above.

Vibration: the phone vibrates but does not ring.

Vibration then melody: the phone first vibrates and then starts ringing.

## Messages *(Menu 3.2)*

This option allows you to set up the ringer for incoming messages.

The following options are available:

**Tone:** lets you choose from many different tones. Each time you select a tone from the list, the tone is played.

**Alert type:** lets you specify how you are informed of any incoming messages.

Silent: only the text notification appears; the phone neither rings nor vibrates.

Tone: the phone rings using the tone selected via the **Tone** option. See above.

Vibration: the phone vibrates but does not ring.

Vibration then tone: the phone first vibrates and then starts ringing.

**Repetition:** allows you to specify how often the phone informs you of a new message. You can choose either **Once** or **Periodic**.

## Power on/off *(Menu 3.3)*

This option allows you to select the melody that the phone sounds when you switch it on or off.

You can choose either **Basic** or **Cheerful**. To turn the sound off, select **Off**.

## Connection tone *(Menu 3.4)*

---

This menu allows you to specify whether or not the phone beeps when your call is connected to the system.

The following options are available:

**Off:** the phone does not beep.

**On:** the phone beeps when your call is connected to the system.

## Key tone *(Menu 3.5)*

---

This menu allows you to select the tone that the phone sounds when you press a key.

The following options are available:

**Off:** the keys do not make any sound.

**Tone:** each key, when pressed, makes a different sound.

**Beep:** each key, when pressed, makes the same sound.

To adjust the key tone volume, press the Volume keys on the left side of the phone in Idle mode with the folder open.

## Minute minder *(Menu 3.6)*

---

This menu allows you to specify whether or not the phone beeps every minute during a call to keep you informed of the length of your call.

The following options are available:

**Off:** the phone does not beep.

**On:** the phone beeps every minute.

## Quiet mode *(Menu 3.7)*

---

When you hold the # key down in Idle mode, the phone switches to the quiet mode. You can specify whether the phone vibrates or mutes all sounds in the quiet mode.

The following options are available:

**Vibration:** the phone vibrates rather than rings in the quiet mode.

**Mute:** the phone mutes sound settings in the quiet mode.


# Phone Settings

Many different features of your phone can be customised to suit your preferences in the **Phone Settings** menu.

## Greeting message *(Menu 4.1)*

This menu allows you to set a greeting message to be displayed briefly when the phone is switched on.

When you access this menu, the current message displays.

To	Press the
clear the existing message	<b>C</b> key and hold it down.
enter a new message	appropriate alphanumeric keys.
save your input	<b>Ok</b> soft key.
cancel your input and return to Idle mode	 key.

For further information about how to enter text, see page 39.

## Display *(Menu 4.2)*

You can change the background image and the colour of the components on the display according to your preference and needs.

### Wallpaper *(Menu 4.2.1)*

- This option allows you to change the background image to be displayed in Idle mode.
- The following options are available:
- Image:** allows you to use various default images. Scroll through the list by pressing the Up or Down key.
- My image:** allows you to select any images in Media box that are downloaded from the Internet or the EasyStudio programme.
- Text position:** allows you to select the position of text displayed on the idle screen, such as the service provider’s name, current date and time, and text notifications of missed calls or new messages. Choose either **Top** or **Bottom**. If you set this option to **Off**, your phone displays only the wallpaper image.
- Text style:** allows you to set the style of text displayed on the idle screen.
- Note:** When you set the wallpaper to **calendar**, Text position and Text style option does not work.

## Skin *(Menu 4.2.2)*

You can change the colour setting of the display components, such as text, soft key indications area or the menu names and icons. Four different colour settings are available.

## Backlight *(Menu 4.2.3)*

You can specify how long the phone uses the backlight.

Select how long the backlight remains on after the last key is pressed or the folder is open.

## LCD brightness *(Menu 4.2.4)*

This option allows you to adjust the brightness of the display screens to make them lighter or darker.

To adjust the display contrast:

1. Select the LCD to be adjusted, **Main LCD** or **External LCD**, and press the **Select** soft key.
2. Adjust the brightness by using the Up and Down keys or the Volume keys on the left side of the phone.
3. When you are satisfied, press the **Ok** soft key to save the selection.

## Language *(Menu 4.3)*

---

You can select a different language for the display text and text input modes. The following options are available:

**Text language:** allows you to change the language of the display text, such as menus, options or warning messages.

**Input mode:** allows you to set the default language to be used in the text input mode.

## Security *(Menu 4.4)*

---

The security settings enable you to restrict the use of your phone to the people and types of calls of your choice.

Various codes and passwords are used to protect the features of your phone. They are described in the following sections. See also page 143 -145.

## PIN Check *(Menu 4.4.1)*

When the PIN Check feature is enabled, you must enter your PIN each time you switch the phone on. Consequently, any person who does not have your PIN cannot use your phone without your approval.

**Note:** Before disabling the PIN Check feature, you must enter your PIN.



The following options are available:

**Enable:** you must enter the PIN each time the phone is switched on.

**Disable:** the phone connects directly to the network when you switch it on.

To change your PIN, see the **Change PIN** menu. See below.

### **Change PIN** *(Menu 4.4.2)*

This feature allows you to change your current PIN to a new one, provided that the PIN Check feature is enabled. You must enter the current PIN before you can specify a new one.

Once you have entered a new PIN, you are asked to confirm it by entering it again.

### **Phone lock** *(Menu 4.4.3)*

When the Phone Lock feature is enabled, the phone is locked and you must enter the 8-digit phone password each time the phone is switched on.

The password is preset to “00000000” at the factory. To change the phone password, see the **Change password** menu on the following page.

Once the correct password has been entered, you can use the phone until you switch it off.

The following options are available:

**Disable:** you are not asked to enter the phone password when you switch the phone on.

**Enable:** you are required to enter the phone password when you switch the phone on.

### **Change password** *(Menu 4.4.4)*

The Change Password feature allows you to change your current phone password to a new one. You must enter the current password before you can specify a new one.

The password is preset to “00000000” at the factory. Once you have entered a new password, you are asked to confirm it by entering it again.

### **SIM lock** *(Menu 4.4.5)*

To enable the SIM Lock feature, you must enter a new four- to eight-digit SIM lock code, and confirm it by entering it again.

The following options are available:

**Disable:** you can use any other SIM cards with your phone.

**Enable:** you must enter the SIM lock code to use another SIM card with your phone.

To unlock the SIM, enter the SIM lock code.

## FDN mode *(Menu 4.4.6)*

The FDN (Fixed Dial Number) mode, if supported by your SIM card, allows you to restrict your outgoing calls to a limited set of phone numbers.

The following options are available:

**Enable:** you can only call phone numbers stored in Phonebook. You must enter your PIN2.

**Disable:** you can phone any number.

**Note:** Not all SIM cards have a PIN2. If your SIM card does not, this menu is not displayed.

To change your PIN2, see the **Change PIN2** menu. See below.

## Change PIN2 *(Menu 4.4.7)*

The Change PIN2 feature allows you to change your current PIN2 to a new one. You must enter the current PIN2 before you can specify a new one.

Once you have entered a new PIN2, you are asked to confirm it by entering it again.

**Note:** Not all SIM cards have a PIN2. If your SIM card does not, this menu does not display.

## Auto redial *(Menu 4.5)*

---

With the Auto Redial function, the phone makes up to ten attempts to redial a phone number after an unsuccessful call.

**Note:** The interval between two call attempts varies.

The following options are available:

**Off:** the number is not redialled.

**On:** the number is redialled automatically.

## Side key *(Menu 4.6)*

---

This menu allows you to change the function of the Volume keys on the left side of the phone when you receive an incoming call.

The following options are available:

**Reject:** the incoming call is rejected when you press and hold one of the Volume keys.

**Silence:** the ring tone is silenced when you press and hold one of the Volume keys; the call is not rejected.

## Fax mode *(Menu 4.7)*

---

You can use your phone as a modem for faxing when it is connected to computing devices. You need to purchase a data kit from your local Samsung dealer.

In this menu, you can enable the fax mode on your phone.

The following options are available:

**Off:** you can send or receive data calls.

**On:** you can send or receive fax calls.

In any case you can send or receive voice calls.

After connecting the phone to your computing device using the data cable and set this menu to

**On**. Your phone works as a fax modem.

For further details about setting and faxing through the phone on your computer, see the user's manual of the computer.

## Reset settings *(Menu 4.8)*

---

This menu allows you to reset your phone to its default configuration. You can reset the sound settings, phone settings or all of the settings together.

1. Select a reset option either **Sound settings** or **Phone settings**.

If you want to reset all of the settings together, select **All settings**.

2. Press the **Select** soft key.
3. When a confirming message appears, press the **Yes** soft key. To exit the function without resetting the settings, press the **No** soft key.
4. Enter the 8-digit phone password and press the **OK** soft key.

**Note:** The password is preset to "00000000." To change this password, see page 95.

# Organiser

The Organiser feature enables you to:

- view the calendar and/or write a memo or to do list.
- set the current date and time, and find out what time it is in various cities around the world.
- set an alarm so that the phone rings at a specific time.
- use your phone as a calculator, unit convertor, timer or stopwatch.

## New memo *(Menu 5.1)*

This menu allows you to create a new memo.

**Note:** You can also access this menu by holding down the **C** key in Idle mode.

1. Write your memo of up to 100 characters and press the **Ok** soft key.

For further information about how to enter text, see page 39.



2. Select the category of the memo to be saved and press the **Select** soft key.

The following categories are available:

- **Scheduler:** general schedule events, such as appointments or meetings.
- **To do list:** tasks you need to do. They are saved on the to do list.
- **Call:** calls you need to make.

- **Anniversary:** anniversaries to be remembered, such as wedding anniversaries, birthdays or other special days.

**Note:** You can save up to 25 items to each category, so you can save 100 memos totally.

3. Scroll to a date on the calendar by pressing the navigation keys. Press the **Select** soft key.
4. If applicable depending on the category you selected, enter the event time and press the **Ok** soft key.
5. If you have selected the 12-hour time format (see page 107), select **AM** or **PM** by pressing the Up or Down key and then press the **Select** soft key.
6. To set an alarm for the memo, press the **Yes** soft key.  
  
Otherwise, press the **No** soft key. The memo is saved immediately. Go to step 10.
7. Enter the time for the alarm to sound and press the **Ok** soft key.
8. If you have selected the 12-hour time format (see page 107), select **AM** or **PM** by pressing the Up or Down key and then press the **Select** soft key.
9. Select an alarm melody and press the **Select** soft key.  
  
The memo is saved.
10. When you have finished, press the  soft key or the  key to exit.

## Calendar *(Menu 5.2)*

The calendar helps you to keep track of schedule, calls that you need to make, tasks that you need to do and anniversaries. You can set the phone to ring when the set date for a schedule is reached.

### Consulting the Calendar

To	Press the
move to another day	Left or Right key.
move to another week	Up or Down key.
move to the previous or next month	Up or Down key and hold it down
move to the previous or next year	Left or Right key and hold it down.

The following options are available when you press the **Options** soft key on the Calendar display:

**Add memo:** allows you to add a new memo on the day.

**Go to date:** allows you to enter a particular date and then schedule an event on that date.

**View all:** shows all of the events that you have scheduled.

**Delete day:** deletes the scheduled event on the selected day.

**Delete all:** deletes all of the events that you have scheduled.

## Creating a New Memo

1. Scroll a date on the calendar, referring to page 102, and press the **Select** soft key.
2. Write your memo and press the **Ok** soft key.

For further information about how to enter characters, see page 39.

3. Select the category of the memo to be saved and press the **Select** soft key.





The following categories are available:

- **Scheduler:** general schedule events, such as appointments or meetings.
- **To do list:** tasks you need to do.
- **Call:** calls you need to make.
- **Anniversary:** anniversaries to be remembered, such as wedding anniversaries, birthdays or other special days.

4. Follow the procedure from step 4 on page 101 onwards to save the memo.

## Viewing Your Calendar Memos

A date that has a memo associated with it is highlighted in a red box. If you select a date when events have already been scheduled, the number of memos of each type is shown at the bottom of the calendar.

-  : General schedule events
-  : To do list
-  : Calls
-  : Anniversaries

Press the **Select** soft key to view the memos.

If you have created more than one memo on the same day, you can scroll to the event you want to view by pressing the Left or Right key.

The following options are available when you press the **Options** soft key:

**Add:** allows you to add a new memo. For further information about how to add a memo, see page 100.

**Delete:** allows you to delete the memo.

**Edit:** allows you to edit the memo.

**Move:** allows you to move the memo to a different date.

**Copy:** allows you to copy the memo to a different date.

## To do list *(Menu 5.3)*

---



This menu allows you to view a list of tasks.

To create a new memo of the To do list type:

1. Write the memo about your task and press the **Ok** soft key.

For more information about how to enter characters, see page 39.

2. Scroll to a date on the calendar, referring to page 102, and press the **Select** soft key.
3. Follow step 4 on page 101 onwards to save the memo.

Once you have defined tasks, they are listed with a status mark ( for Done or  for Undo) within the **To do list** menu.

To scroll to a specific task, press the Up or Down key and press the **Select** soft key. The task displays with the deadline, alarm setting, job details and status mark.

You can scroll to the previous or next task by pressing the Left or Right key.

The following options are available when you press the **Options** soft key:

**Add:** allows you to add a new task. For details about adding To do list-type memos, see page 100.

**Mark:** allows you to change the status mark.

**Edit:** allows you to edit the contents of the task.

**Move:** allows you to move the task to a different date.

**Copy:** allows you to copy the task to a different date.

**Delete:** allows you to delete the task.

**Delete all:** allows you to delete all of tasks from the list.

# Clock *(Menu 5.4)*

This option allows you to change the current time and date displayed. You can also check the current time for Greenwich Mean Time (GMT) and 21 major cities around the world.

The following options are available:

**Set time:** allows you to enter the current time. You can choose the time format in the **Set format** menu; see page 107.

**Note:** Before setting the time, you must specify your time zone in the **Set world time** menu.

**Set date:** allows you to enter the day, month and year. You can change the date format in the **Set format** menu; see page 107.

**Set world time:** allows you to check the current time in 21 major cities around the world. Scroll through the cities using the Left or Right key. The screen shows the:

- city name.
- current date and time.
- time difference between the selected city and your city if you have set the local time (see below).



To select your time zone:



1. Select the city corresponding to your time zone by pressing the Left or Right key one or more times.

The local date and time display.

You can also view other cities in the time zone by pressing the Up or Down key.

2. Press the **Set** soft key.

To	Select
update the current date/time with this new setting	<b>Set local.</b>
indicate that the time zone is currently using the daylight saving time	<b>Set DST.</b> The  icon is shown next to the time difference.
indicate that the time zone is no longer using the daylight saving time	<b>Remove DST</b> (only available when the  icon is shown next to the time difference).

4. When you have finished, press the  soft key or the  key to exit.

**Set format:** allows you to change the time and date formats.

Time format: 24 hours  
12 hours



Date format: DD/MM/YYYY (day/month/year)  
YYYY/MM/DD (year/month/day)

## Alarm *(Menu 5.5)*

This option allows you to set an alarm to ring at a specific time. You can set up to three alarms or set the phone to ring an alarm when it is switched off.

To set an alarm:

1. Select either **Morning call**, **Alarm1** or **Alarm2** by pressing the Up or Down key.

The  icon means that no alarm is currently set. The  icon means that an alarm has already been set.



2. Press the **Select** soft key.
3. Press the **Options** soft key.
4. Scroll to an option by pressing the Up or Down key and press the **Select** soft key. Change the setting, as needed.


- **Alarm day:** place or remove a check mark on the day(s) of the week by pressing the **Select** soft key. If you want to set a daily alarm, select **Everyday**. If you want to set a temporary alarm, select **Once alarm**. When you press the **Ok** soft key after selecting, your phone asks you to enter the alarm time.

- **Alarm time:** enter the time for the alarm to sound.

- **Alarm tone:** select an alarm melody.

- **Remove alarm:** deactivates the alarm.

5. Repeat step 4 to change each setting.
6. When you have finished, press the  soft key or the  key to exit.

Once an alarm has been set, you can see the Alarm icon () on the top line of the display. To stop the alarm when it rings, open and close the phone or press any key.



### Notes:

- When the Quiet mode is activated, the alarm tone doesn't sound. But when you set a morning call, it sounds the alarm tone even if the Quiet mode is activated.
- The alert type for Alarm 1 and 2 is affected by the one for incoming calls. Morning call's alert type is always **Melody**.

To set the alarm to ring even if your phone is switched off:

1. Scroll to **Auto power** on the Alarm list and press the **Select** soft key.
2. If necessary, press the Up or Down key to select **On**.

To turn the Auto Power feature off, select **Off**.

3. Press the **Select** soft key to save the setting.
4. When you have finished, press the  soft key or the  key to exit.

Once you have activated the auto power alarm, a check mark appears ahead of **Auto power**. If the phone is switched off at the specified alarm time, it automatically switches on and rings the alarm. It then automatically switches off again.



## Calculator *(Menu 5.6)*

You can use the phone as a calculator. The calculator performs basic arithmetic functions, such as addition, subtraction, multiplication, division and percentages.

To perform a calculation:

1. Enter the first number using the number keys.

**Note:** To erase any mistakes or clear the display, press the **C** key.

2. Press the **\*** key to enter a decimal point (.) or the **#** key to enter the appropriate arithmetic symbol: **+** (add), **-** (subtract), **\*** (multiply), **/** (divide), **%** (remainder), **(** or **)**.

3. Enter the second figure.

4. Repeat steps 2 and 3, if necessary.

5. Press the **Equal** soft key to view the result.

The result appears in the **Answer** box.

**Note:** The result is rounded to six decimal places.

6. When you have finished, press the **↶** soft key or the **↶** key to exit.

## Conversion *(Menu 5.7)*

This menu allows you to convert from one type of unit to another.

To convert a value:

1. Scroll to the type of conversion to be performed from **Length**, **Weight**, **Volume**, **Area** and **Temperature**, and press the **Select** soft key.
2. Enter the value to be converted and press the Down key to move to the **From** field.

You can enter a decimal point (.) using the **\*** key.

3. Select the original unit by pressing the Left or Right key and press the Down key to move to the **To** field.

Refer to the table on the following page for the units available.

4. Select the required unit by pressing the Left or Right key.
5. Press the **Ok** soft key or the **↶** key to view the result.

The result appears in the **Answer** box.

6. When you have finished, press the **↶** soft key or the **↶** key to exit.

Units Available

Type	Units		
Length	mm	cm	m
	km	in	ft
	yard	mile	
Weight	g	kg	ton
	grain	oz	pound
Volume	cm <sup>3</sup>	m <sup>3</sup>	l
	in <sup>3</sup>	ft <sup>3</sup>	yd <sup>3</sup>
	gal		
Area	cm <sup>2</sup>	m <sup>2</sup>	a
	in <sup>2</sup>	ft <sup>2</sup>	yd <sup>2</sup>
	acre		
Temperature	°C	°F	

Timer *(Menu 5.8)*

Using the Timer feature, you can set the phone to sound an alarm after a certain time.

1. Press the **Set** soft key.
2. Enter the length of time you want to count down in hours and minutes and press the **Ok** soft key.
3. Press the **Start** soft key to start counting down.

Even if you exit the Timer screen, the timer will continue running. After the specified time has expired, the phone informs you by playing a melody and displaying a text notification.

To stop the timer melody when it rings, open and close the phone or press any key.

To stop the timer before the end, press the **Stop** soft key on the Timer screen.

**Note:** The timer uses power from the battery; consequently, the phone's operating time is reduced.


Stopwatch *(Menu 5.9)*

The stopwatch can be used to measure times for various sports.

Example: Running or swimming races

Up to four stopwatches can be used.

The precision of the stopwatch is one hundredth of a second. The maximum measurement time is 10 hours.

1. To start the stopwatches, press the **Ok** soft key.
2. When you wish to stop the first stopwatch, press the **Ok** soft key. Repeat this step for the other stopwatches.
3. Press the **Reset** soft key to reset the watches.
4. Press the **C** or  key to exit.

# Network Services

These menu functions are network services. Please contact your service provider to check their availability and subscribe to them, if you wish.

## Call diverting *(Menu 6.1)*

**Note:** The call divert options may be different depending on your SIM card and those not supported by your network operator may not be shown.

This network service enables incoming calls to be rerouted to the number that you specify.

Example: You may wish to divert your business calls to a colleague while you are on holiday.

Call diverting can be set up in the following ways:

**Divert always:** all calls are diverted.

**Busy:** calls are diverted when you are already on another call.

**No reply:** calls are diverted when you do not answer the phone.

**Unreachable:** calls are diverted when you are not in an area covered by your service provider.

**Cancel all:** all call diverting options are cancelled.

You can specify individual call diverting options for each of the following call types:

- Voice calls only
- Fax calls only (not available when line 2 is in use)
- Data calls only (not available when line 2 is in use)

Example: You can:

- systematically divert fax calls to your office fax machine.
- divert voice calls to your colleague if you are already using the phone.

## Setting Call Diverting Options

1. Select the type of call diverting by pressing the Up or Down key and then press the **Select** soft key.
2. Select the type of calls to be diverted by pressing the Up or Down key and then press the **Select** soft key.
3. Press the **Activate** soft key to confirm your settings.
4. Enter the number to which the calls are to be diverted.

To enter an international code, press and hold the **0** key until the + sign displays.

You can also select a number in Phonebook or the voice mail server number, by pressing the **Options** soft key, followed by **Phonebook** or **Voice server**.

5. When you are satisfied, press the **Ok** soft key.

The phone sends your settings to the network and the network's acknowledgement displays.

## Deactivating Specific Call Diverting Options

1. Select the call diverting option to be deactivated.
2. Select the type of calls to which this option applies.
3. Press the **Remove** soft key.

The phone sends your settings to the network and the network's acknowledgement displays.

You can also deactivate all call diverting settings by selecting the **Cancel all** option.

## Call barring *(Menu 6.2)*

The call barring network service allows you to restrict your calls.

Call barring can be set up in the following ways:

**All outgoing:** calls cannot be made.

**International:** international calls cannot be made.

**International except to home:** when abroad, calls can be made only to numbers within the current country and to your home country, that is the country where your home network provider is located.

**All incoming:** calls cannot be received.

**Incoming while abroad:** calls cannot be received when you are using your phone outside your home service area.

**Cancel all:** all call barring settings are deactivated; calls can be made and received normally.

You can specify individual call barring options for each of the following call types:

- Voice calls only
- Fax calls only (not available when line 2 is in use)
- Data calls only (not available when line 2 is in use)

## Setting Call Barring Options

1. Select the type of call barring by pressing the Up or Down key and then press the **Select** soft key.
2. Select the type of calls to be barred by pressing the Up or Down key and then press the **Select** soft key.
3. Press the **Activate** soft key to confirm your settings.
4. Enter your call barring password supplied by your service provider and press the **Ok** soft key.

The phone sends your settings to the network and the network's acknowledgement displays.

## Deactivating Specific Call Barring Options

1. Select the call barring option to be deactivated.
2. Select the type of calls to which this option applies.
3. Press the **Deactivate** soft key.

4. Enter your call barring password supplied by your service provider.

The phone sends your settings to the network and the network's acknowledgement displays.

You can also deactivate all call barring settings by selecting the **Cancel all** option.

## Changing the Barring Password

You can set and change the call barring password obtained from your service provider.

1. Select **Change barring password** from the Call barring screen, and press the **Select** soft key.
2. Enter the current password and press the **Ok** soft key.
3. Enter a new password and press the **Ok** soft key.
4. Enter the new password again to confirm it and press the **Ok** soft key.

## Call waiting (Menu 6.3)

---

This network service informs you when someone is trying to reach you during another call.

You can specify individual call waiting options for each of the following call types:

- Voice calls only
- Fax calls only (not available when line 2 is in use)
- Data calls only (not available when line 2 is in use)

## Activating the Call Waiting Feature

1. Select the type of calls to which the call waiting option is to be applied by pressing the Up or Down key and then press the **Select** soft key.
2. Press the **Activate** soft key to confirm your settings.

The phone sends your settings to the network and the network's acknowledgement displays.

## Deactivating Specific Call Waiting Options

1. Select the type of call to which the option applies.
2. Press the **Deactivate** soft key.

The phone sends your settings to the network and the network's acknowledgement displays.

You can also deactivate all call waiting settings by selecting the **Cancel all** option.

## Network selection *(Menu 6.4)*

---

The Network Selection feature enables you to automatically or manually select the network used when roaming outside your home area.

**Note:** You can select a network other than your home network only if it has a valid roaming agreement with your home network.

To indicate to automatically or manually select the network when roaming:

1. Press the Up or Down key until the appropriate option highlights and press the **Select** soft key.

If you select **Automatic**, you are connected to the first available network when roaming.

If you select **Manual**, the phone scans for the available networks. Go to step 2.

2. Press the Up or Down key until the preferred network highlights and press the **Select** soft key.

You are connected to that network when roaming.

## Caller ID *(Menu 6.5)*

---

You can prevent your phone number from being displayed on the phone of the person being called.

**Note:** Some networks do not allow the user to change this setting.

The following options are available:

**Default:** the default setting provided by the network is used.

**Hide number:** your number does not display on the other person's phone.

**Send number:** your number is sent each time you make a call.

## Active Line *(Menu 6.6)*

---

Some SIM cards may be used with two subscriber numbers. This function is available only if your SIM card supports it.

This menu allows you to select the line to be used to make calls. However, calls can be answered on both lines, regardless of the selected line. When you select **Line 1** or **Line 2**, the line number appears as an indicator after the operator/service provider's name.



## Fun Box

The **Fun box** menu contains several fun options:

- WWW Services
- Fun Club
- Media box
- Games
- IrDA

### WWW Services *(Menu 7.1)*

Your phone comes equipped with a WAP (Wireless Application Protocol) Browser, making it possible for you to access the Wireless Web.

Each time you start the WAP Browser, the phone connects to the Wireless Web and the service indicator icon ( or ) appears on the display to inform you that you are connected to the Wireless Web and will be billed accordingly. Rates vary according to your service option.


The WAP Browser ends the network connection after a certain period of inactivity and automatically reconnects as necessary. For this reason, you may find that you are billed for several network connections within a single session. This is normal and is designed to minimise your bill.

### Home *(Menu 7.1.1)*




When you select this menu, the phone connects to the network and loads the homepage of the Wireless Web service provider.

Once connected, the homepage displays. The content depends on the service provider.

The content of the WAP Browser startup homepage depends on your Wireless Web service provider. To scroll through the screen, use the Up and Down keys.

To exit the browser, press the  key at any time. The phone returns to Idle mode.

### Navigating the WAP Browser

To	Press the
scroll through and select browser items	Up or Down key until the item you want highlights, and then press the  soft key.
select a numbered item	corresponding numeric key.
return to the previous page	 soft key.
return to the startup homepage	 key and select the <b>Home</b> browser option. For details, see page 124.

## Entering Text in the WAP Browser

When you are prompted to enter text, the current text input mode appears above the right soft key.

For further information about how to enter text, see page 39.

## Using the WAP Browser Menus

There are various menus available when surfing the Wireless Web.

To access the WAP Browser menu:

1. Press the **✕** key.  
A list of options appears.
2. Highlight the required option using the Up or Down key.
3. Press the **✓** soft key to select the option.
4. If necessary, select the secondary option by pressing the Up or Down key and then press the **✓** soft key.

**Note:** The WAP Browser menus may vary, depending on your version of the browser.

The following options are available:

**Back:** returns to the previous page.

**Home:** takes you back at any time to the homepage of the Wireless Web service provider.

**Exit:** exits the WAP browser.

**Inbox:** stores received push messages or WAP data.

**Reload:** reloads the current page.

**Advanced:** the following options are available:

Show URL: shows the URL address of the Web page you are currently accessed.

Clear Cache: clears the information stored in the cache, the phone's temporary memory used to store the most recently accessed Web pages.

**About:** shows the version of the WAP Browser.

## Using the WAP Browser Options

Several options are available when you are surfing the Wireless Web. To access these options, press the **⌂** key once connected to the Wireless Web.

**Goto URL:** allows you to manually enter the URL address of the site that you wish to access.

**Bookmark:** allows you to use the **Bookmark** menu. For details, see page 126.

**Messages:** allows you to read or write an SMS message. For details, see page 87.

**Media box:** allows you to use your media box. For details, see page 131.

## Answering a Call During a WAP Connection

You can receive an incoming call while you are navigating the WAP browser.

Answer the call by pressing the **☎** key, as you normally would. After ending the call, you can continue navigating on the Web page you previously were accessed.



## Bookmark *(Menu 7.1.2)*

This menu allows you to store the URL addresses of up to 5 of your favourite Web sites.

To store a URL address:

1. Select an empty location and press the **Select** soft key.
2. Enter the name of the bookmark and press the **Ok** soft key.  
For further information about how to enter text, see page 39.

3. Enter the address and press the **Ok** soft key to save it.

Once you have stored an address, the following options are available when you select it.

**Go:** allows you to access the site directly.

**Edit:** allows you to change the name and URL address of the bookmark.

**Delete:** allows you to delete the bookmark.

## Go to URL *(Menu 7.1.3)*

This menu allows you to manually enter the URL address of the Web site that you wish to access.

Enter the URL address and press the **Ok** soft key.

For further information about how to enter text, see page 39.

## Clear cache *(Menu 7.1.4)*

This menu allows you to clear the information stored in the cache, the phone's temporary memory used to store the most recently accessed Web pages.

## Proxy settings *(Menu 7.1.5)*

This menu allows you to set up five proxy servers.

**Note:** You do not need to change the browser settings in most cases. Change the settings only when your network provider asks you to.

For each proxy, the following options are available:

**Proxy name:** enter the name of the HTTP proxy server.

**GSM setting:** you can change the proxy settings for the GSM network.

Gateway: enter the IP Address and IP Port

Data call type: select a network connection type; **ISDN** or **Analogue**.

Dial number: enter the PPP server phone number.

Login ID: enter the PPP server login ID.

Password: enter the PPP server password.

**GPRS setting:** you can change the proxy settings for the GPRS network.

Gateway: enter the IP Address and IP Port.

APN: enter the access point name used for the address of the GPRS network gateway.

Login ID: enter the user ID required to connect to the GPRS network.

Password: enter the password required to connect to the GPRS network.

**Home URL:** You can change the address of your startup homepage.

When the default homepage displays, you can delete it using the **C** key and enter your own choice. To enter any special characters, / for example, use the Symbolic mode; see page 50.

**Bearer:** You can select the bearer to be used for each type of network accesses.

GPRS first: your phone will search for the GPRS network first. If this service is not available, you can set the GSM service temporarily.

GPRS only: it only works in GPRS network.

GSM only: it only works in GSM network.

### **Current proxy** *(Menu 7.1.6)*

This menu allows you to activate one of the proxies you set up to use the WAP connection.

## **Fun Club** *(Menu 7.2)*

---

You can access Samsung Fun Club on the Internet and download various media items, such as melodies and images.

Samsung Fun Club is the preset web site providing Samsung phone users with attractive download services. You can download:

- images and ring tones via SMS.
- 4-level grayscale and colour images from WAP.
- 40 polyphonic melodies from WAP.
- information and electronic catalogues for Samsung Electronics products.

### **Image** *(Menu 7.2.1)*

In this menu, you can store images downloaded from Samsung Fun Club. You can use them as your wallpaper or power on/off images or delete them.

### **Melody** *(Menu 7.2.2)*

In this menu, you can store 40 poly ring tones and melodies downloaded from Samsung Fun Club. You can use them as your ring tone or delete them.

**Gift Box** (Menu 7.2.3)

When you access Samsung Fun Club, you can receive images and ring tones from other people as gifts.

Once you receive a gift, its website URL is stored in this menu, so that you can access the site directly to download it.

**SFC Home** (Menu 7.2.4)

In this menu, you can access the Samsung Fun Club homepage.

**Note:** Before accessing Samsung Fun Club for the first time, please connect your service provider's WAP homepage first. Then reconnects to Samsung Fun Club. This service requires WAP subscription and is unavailable depending on your local system and services.

**Image Home** (Menu 7.2.5)

In this menu, you can access the preset web page to download various images.

**Melody Home** (Menu 7.2.6)

In this menu, you can access the preset web page to download 40-poly ring tones and melodies.

**Service Area** (Menu 7.2.7)

Each time you move to HongKong or China, you need to change this setting to use the SFC service, according to the area where you are. You can choose either **China** or **HongKong**.

For further details about this service, contact your service provider.

**Media box** (Menu 7.3)

You can view the images and melodies available in your phone.

The following options are available:

**Image:** allows you to view the images received from other sources, such as the Internet or other phones. Press the **Options** soft key to rename or delete the image.

**Melody:** allows you to listen to the melodies received from other sources, such as the Internet or other phones. Press the **Options** soft key to rename or delete the melody.

**Note:** When you delete one of the melodies are used as current melody settings, the setting melody is changed to the predefined melody.

**Delete all:** deletes all of the images and melodies in the media box. Place or remove a check mark ahead of the item you want to delete by pressing the **Select** soft key, and then press the **Ok** soft key.

**Games** (Menu 7.4)

Using this menu, you can also enjoy playing three games.

Scroll to the required game by pressing the Up or Down key and press the **Select** soft key.

To select an option, press the corresponding number key. The following options are available:


**New Game:** allows you to start a new game.

**High Score:** shows you the High Score table. Not all games have this option.

**Key Info.:** shows you which keys do what within the game.

**Continue:** allows you to continue the game you played previously. The menu is only available when a game has already been played.

While you are playing a game:

To	Press the
adjust the game volume	Volume keys.
pause/resume the game	<b>C</b> key.
exit the game	 key or right soft key.

At the end of the game, if your score is ranked fifth or higher, you may enter a name of up to 10 characters.

**Honey Ball** (Menu 7.4.1)

The goal of the game is to break honey blocks by bouncing a ball between a bat and the honey blocks.

When you start a new game, the ball is sitting on the bat in the middle of the screen. Once you start the ball moving, you must position the bat, so that the ball continues to bounce off it. Each time the ball hits a honey block, the block breaks, sometimes revealing letters that enhance the efficiency of the bat or ball:

**B:** the bat and ball change back to their standard form.

**C:** the ball sticks to the bat each time it hits it, giving you time to optimise your position.

**H:** the bat increases in length.

**P:** the ball is changed into a power ball, so that it no longer bounces off the blocks. It goes straight through them, destroying anything that it touches.

If you reach the final stage of the game, the rules are slightly different. The honey blocks are much stronger and need to be hit more than once before they are destroyed. At the same time, small bees attack the bat, damaging it a little each time until it is destroyed and you lose a life.


**Key Commands**

3: slope up

1: slope down

4, Left: move left

6, Right: move right

9, 5 or : hit the ball

\*: turn the sound on or off

## Go! Hamster (Menu 7.4.2)

Go! Hamster is an arcade board game. It requires patience and discretion. The aim is to remove about 80% of the background while avoiding the mushroom bombs in order to progress to the next stage.

When the start screen appears, press any key to start the game.

### Key Commands

- 2: move up
- 4: move left
- 6: move right
- 8: move down
- 5: stop
- \*: turn the sound on or off


## Bowling (Menu 7.4.3)

The goal of the game is to knock down a triangular group of ten pins by rolling a ball.

When you start a new game, you can select the required mode, character and ball by pressing the right soft key.

When the game starts, the screen shows the character and ball. Move the character first, then select the spin and direction, and finally set the power of the ball.

### Key Commands

- 4, Left: move left
- 6, Right: move right
- 5, : set the speed or spin or throw the ball
- \*: turn the sound on or off


## IrDA (Menu 7.5)

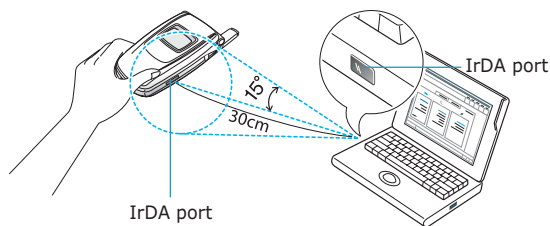
This feature allows you to send or receive data through the infrared port.

### Activation (Menu 7.5.1)

When using **Activation** option, you can activate or deactivate the infrared port.

To use an infrared connection with your computer, you must:

- configure and activate an IrDA-compliant infrared port on your PC.
- activate the infrared feature on the phone; set the **Activation** option in the **IrDA** menu to **On**. The IrDA icon () appears on the top line of the display.
- align the IrDA port on the phone with the IrDA port on your computer.



The connection is ready for data transmission.

To end the connection, select **Off**.

If there is no communication between your phone and the IrDA-compliant device within 1 minute of activating the feature, it is automatically deactivated.

**Note:** This feature is also available between the phones activated the infrared feature. For the best performance, use the data link cable purchased by your local Samsung dealer.

### Send phonebook *(Menu 7.5.2)*

Via the infrared connection, you can send your Phonebook entries to another compliant phone and vice versa.

#### Sending Your Phonebook

1. Align the IrDA ports on both phones each other.
2. Access the **Send phonebook** menu in the **IrDA** menu and choose one of the following options and press the **Select** soft key:
  - **One:** allows you to send the selected entry.
  - **All(SIM):** allows you to send all of the entries from the selected one on the SIM card list.
  - **All(Phone):** allows you to send all of the entries from the selected one on the Phone list.
  - **All(SIM+Phone):** allows you to send all of the entries from the selected one on the list, regardless of the memory location, SIM card or phone's memory.
3. Enter the first few letters that you want to find and press the **OK** soft key.

The Phonebook entries are listed, containing with the entry matching your input.

4. Scroll to the entry you want to send and press the **Select** soft key.

Your phone begins sending the entry(ies).

**Note:** While sending Phonebook, if you get an incoming call the sending work will stop.

#### Receiving Phonebook from Another Phone

1. Align the IrDA ports on both phones each other.
2. Access the **Activation** menu in the **IrDA** menu and select **On** to activate the port.
3. When your phone receives Phonebook data from the other phone:

If the other person sends you the entry by **One**, your phone displays the name and the phone number and you can specify whether or not you want to save it. Continue to step 4.

If the person sends you the entries by **All(SIM)**, **All(Phone)**, **All(SIM+Phone)** you can select a memory location, SIM card or phone's memory. Continue to step 5.

4. Press the **Save** soft key to store the entry.

You can also delete the entry by pressing the **Cancel** soft key.

5. Press the **SIM** or **Phone** soft key.

The entries are saved in the appropriate memory.

**Note:** While receiving Phonebook, if you get an incoming call you can receive or reject the call. After then your phone automatically resumes receiving.

## Using ALS (Alternate Line Service)

The ALS feature enables two lines to be associated with one SIM card. Consequently, you can make and receive calls on either line. If you subscribe to this network service, a few additional menus enable you to set up this feature.

**Note:** Please contact your service provider to check the availability of this feature and how to subscribe to ALS.

### Selecting a Line

You can select a line for each call via the **Active line** menu (**Menu 6.6**). For further details, refer to page 121.

### Editing the Line Name

You can edit the name of each line via the **Own number** menu.

When you edit the name of a line, this name replaces "Line 1" or "Line 2", as applicable. For further details, refer to page 61.

### Setting the Ring Type

To distinguish between incoming calls on the two lines, you can select a different ring tone for each line via the **Incoming calls** menu (**Menu 3.1**). See page 86 for further details.

### Setting Call Diverting Options

You can set up call diverting via the **Call diverting** menu (**Menu 6.1**). This service reroutes incoming calls on the line of your choice to a specified number. For further details, see page 114.

### Viewing Call Information

You can view call times and last call cost information for each line. For further details, see page 84 and 85.

# Solving Problems

Before contacting the after-sales service, perform the following simple checks. They may save you the time and expense of an unnecessary service call.

## When you switch your phone on, the following messages may appear

### No SIM card

Check that the SIM card is correctly installed.

### Phone locked Enter password

The Phone lock feature is enabled. You must enter the phone's password before you can use the phone.

### Enter PIN

- You are using your phone for the first time. You must enter the Personal Identification Number supplied with the SIM card.
- The PIN check feature is enabled. Every time the phone is switched on, you must enter the PIN. To disable this feature, use the **PIN check** menu (**Menu 4.4.1**). See page 93.


### Enter PUK

The PIN was entered incorrectly three times in succession and the phone is now blocked. Enter the PUK supplied by your network operator.


## "No service" displays

- The network connection was lost. You may be in a weak reception area (in a tunnel or surrounded by buildings). Move and try again.
- You are trying to access an option for which you have not taken out a subscription with your service provider. Contact the service provider for further details.

## You have entered a number but it was not dialled

- Have you pressed the  key?
- Are you accessing the right cellular network?
- You may have set an outgoing call barring option.

## Your correspondent cannot reach you

- Is your phone switched on (the  key pressed for more than one second)?
- Are you accessing the right cellular network?
- You may have set an incoming call barring option.

## Your correspondent cannot hear you speaking

- Have you switched off the microphone (**Mute** appears)?
- Are you holding the phone close enough to your mouth? The microphone is located at the bottom of the phone.



## The phone starts beeping and “Battery Low” flashes on the display

The battery is insufficiently charged. Recharge the battery.

## The audio quality of the call is poor

- Check the signal strength indicator on the display ( ); the number of bars indicates the signal strength from strong ( ) to weak ( ).
- Try moving the phone slightly or moving closer to a window if you are in a building.

## No number is dialled when you recall a Phonebook entry

- Check that the number has been stored correctly, by using the Phonebook Search feature.
- Re-store them, if necessary.

If the above guidelines do not help you to solve the problem, take note of:

- the model and serial numbers of your phone
- your warranty details
- a clear description of the problem

Then contact your local dealer or Samsung after-sales service.

# Access Codes

There are several access codes that are used by your phone and its SIM card. These codes help you protect the phone against unauthorised use.

Some access codes can be changed using the **Security** menu (**Menu 4.4**). See page 93 for further details.

## Phone Password

The Phone lock feature (see page 94) uses the phone password to protect your phone against unauthorised use.

The phone password is supplied with the phone and is preset to “00000000” at the factory. To change the password, use the **Change password** menu (**Menu 4.4.4**). See page 95.

## PIN

The PIN (Personal Identification Number) protects your SIM card against unauthorised use. It is usually supplied with the SIM card. When the PIN Check feature is enabled (see page 93), you must enter the PIN each time you switch on the phone.

If you key in an incorrect PIN three times in succession, key in the PUK and press the **Ok** soft key to unlock the phone. Key in a new PIN and press the **Ok** soft key. Key in the new PIN again and press the **Ok** soft key.

## PIN2

---

The PIN2, supplied with some SIM cards, is required to access some functions, such as charging unit counters. These functions are only available if supported by your SIM card.

If you key in an incorrect PIN2 three times in succession, key in the PUK2 and press the **Ok** soft key to unlock the phone. Key in a new PIN2 and press the **Ok** soft key. Key in the new PIN2 again and press the **Ok** soft key.

## PUK

---

The PUK (PIN Unlocking Key) is required to change a blocked PIN. The PUK may be supplied with the SIM card. If not, contact your local service provider.

If you key in an incorrect PUK ten times in succession, the SIM card cannot be used anymore. Contact your service provider for a new card.

You cannot change the PUK. If you lose the code, contact your service provider.

## PUK2

---

The PUK2, supplied with some SIM cards, is required to change a blocked PIN2.

If you key in an incorrect PUK2 ten times in succession, you cannot use the functions requiring the PIN2. Contact your service provider for a new card.

You cannot change the PUK2. If you lose the code, contact your service provider.

## Call Barring password

---

The 4-digit call barring password is required when you use the Call Barring function. You obtain the password from your service provider when you subscribe to this function.

You can change this password using the **Call barring** menu (**Menu 6.2**). For further details, see page 118.

# Health and Safety Information

## Battery Safety

### Standby time will be reduced in the following conditions:

- When you use the additional features on your phone such as writing and storing messages, playing games, connecting to the Internet, and so on.
- If you are frequently out of the service area.
- If you are out of the service area for a long period of time.
- If you use the phone out of the network's local service area.
- If you use the talk mode repeatedly.
- The battery can be charged and discharged hundreds of times, but it will eventually wear out. When the operation time for both talk mode and standby mode is reduced by about half, it is time to buy a new battery.

### Precautions When Using Batteries

- Never use any charger or battery that is damaged in any way.
- Use the battery only for its intended purpose.
- If you use the phone near the network's base station, it uses less power; talk and standby time are greatly affected by the signal strength on the cellular network and the parameters set by the network operator.

- Battery charging time depends on the remaining battery charge and the type of battery and charger used. The battery can be charged and discharged hundreds of times, but it will gradually wear out. When the operation time (talk time and standby time) is noticeably shorter than normal, it is time to buy a new battery.
- If left unused, a fully charged battery will discharge itself over time.
- Use only Samsung-approved batteries and recharge your battery only with Samsung-approved chargers. When a charger is not in use, disconnect it from the power source. Do not leave the battery connected to a charger for more than a week, since overcharging may shorten its life.
- Extreme temperatures will affect the charging capacity of your battery: it may require cooling or warming first.
- Do not leave the battery in hot or cold places, such as in a car in summer or winter conditions, as you will reduce the capacity and lifetime of the battery. Always try to keep the battery at room temperature. A phone with a hot or cold battery may temporarily not work, even when the battery is fully charged. Li-ion batteries are particularly affected by temperatures below 0 °C (32 °F).
- Do not short-circuit the battery. Accidental short-circuiting can occur when a metallic object (coin, clip or pen) causes a direct connection between the + and - terminals of the battery (metal strips on the battery), for example when you carry a spare battery in a pocket or bag. Short-circuiting the terminals may damage the battery or the object causing the short-circuiting.
- Dispose of used batteries in accordance with local regulations. Always recycle. Do not dispose of batteries in a fire.

## Road Safety

---

Your wireless phone gives you the powerful ability to communicate by voice, almost anywhere, anytime. But an important responsibility accompanies the benefits of wireless phones, one that every user must uphold.

When driving a car, driving is your first responsibility. When using your wireless phone behind the wheel of a car, practice good common sense and remember the following tips.

1. Get to know your wireless phone and its features, such as speed dial and redial. If available, these features help you to place your call without taking your attention off the road.
2. When available, use a hands-free device. If possible, add an extra layer of convenience and safety to your wireless phone with one of the many hands-free accessories available today.
3. Position your wireless phone within easy reach. Be able to access your wireless phone without removing your eyes from the road. If you get an incoming call at an inconvenient time, let your voice mail answer it for you.
4. Let the person you are speaking with know you are driving; if necessary, suspend the call in heavy traffic or hazardous weather conditions. Rain, sleet, snow, ice and even heavy traffic can be hazardous.
5. Do not take notes or look up phone numbers while driving. Jotting down a To Do list or flipping through your phonebook takes your attention away from your primary responsibility, driving safely.
6. Dial sensibly and assess the traffic; if possible, place calls when you are not moving or before pulling into traffic. Try to plan calls when your car will be stationary. If you need to make a call while moving, dial only a few numbers, check the road and your mirrors, then continue.
7. Do not engage in stressful or emotional conversations that may be distracting. Make the people with whom you are talking aware that you are driving and suspend conversations that have the potential to divert your attention from the road.
8. Use your wireless phone to call for help. Dial the emergency number in the case of fire, traffic accident or medical emergencies. Remember, it is a free call on your wireless phone!
9. Use your wireless phone to help others in emergencies. If you see a car accident, crime in progress or other serious emergency where lives are in danger, call the emergency number, as you would want others to do for you.
10. Call roadside assistance or a special non-emergency wireless assistance number when necessary. If you see a broken-down vehicle posing no serious hazard, a broken traffic signal, a minor traffic accident where no one appears injured, or a vehicle you know to be stolen, call roadside assistance or any other special non-emergency wireless number.

## Operating Environment

---

Remember to follow any special regulations in force in any area and always switch your phone off whenever it is forbidden to use it, or when it may cause interference or danger.

When connecting the phone or any accessory to another device, read its user's guide for detailed safety instructions. Do not connect incompatible products.

As with other mobile radio transmitting equipment, users are advised that for the satisfactory operation of the equipment and for the safety of personnel, it is recommended that the equipment should only be used in the normal operating position (held to your ear with the antenna pointing over your shoulder).

## Electronic Devices

---

Most modern electronic equipment is shielded from radio frequency (RF) signals. However, certain electronic equipment may not be shielded against the RF signals from your wireless phone. Consult the manufacturer to discuss alternatives.

### Pacemakers

Pacemaker manufacturers recommend that a minimum distance of 15 cm (6 inches) be maintained between a wireless phone and a pacemaker to avoid potential interference with the pacemaker. These recommendations are consistent with the independent research and recommendations of Wireless Technology Research.

Persons with pacemakers:

- should always keep the phone more than 15 cm (6 inches) from their pacemaker when the phone is switched on.
- should not carry the phone in a breast pocket.
- should use the ear opposite the pacemaker to minimise potential interference.

If you have any reason to suspect that interference is taking place, switch your phone off immediately.

### Hearing Aids

Some digital wireless phones may interfere with some hearing aids. In the event of such interference, you may wish to consult your hearing aid manufacturer to discuss alternatives.

### Other Medical Devices

If you use any other personal medical devices, consult the manufacturer of your device to determine if it is adequately shielded from external RF energy. Your physician may be able to assist you in obtaining this information. Switch your phone off in health care facilities when any regulations posted in these areas instruct you to do so. Hospitals or health care facilities may be using equipment that could be sensitive to external RF energy.

### Vehicles

RF signals may affect improperly installed or inadequately shielded electronic systems in motor vehicles. Check with the manufacturer or its representative regarding your vehicle. You should also consult the manufacturer of any equipment that has been added to your vehicle.

## Posted Facilities

Switch your phone off in any facility where posted notices require you to do so.

## Potentially Explosive Environments

Switch your phone off when in any area with a potentially explosive atmosphere and obey all signs and instructions. Sparks in such areas could cause an explosion or fire resulting in bodily injury or even death.

Users are advised to switch the phone off while at a refuelling point (service station). Users are reminded of the need to observe restrictions on the use of radio equipment in fuel depots (fuel storage and distribution areas), chemical plants or where blasting operations are in progress.


Areas with a potentially explosive atmosphere are often but not always clearly marked. They include below deck on boats, chemical transfer or storage facilities, vehicles using liquefied petroleum gas (such as propane or butane), areas where the air contains chemicals or particles, such as grain, dust or metal powders, and any other area where you would normally be advised to turn off your vehicle engine.

## Emergency Calls

This phone, like any wireless phone, operates using radio signals, wireless and landline networks as well as user-programmed functions, which cannot guarantee connection in all conditions. Therefore, you should never rely solely on any wireless phone for essential communications (medical emergencies, for example).

Remember, to make or receive any calls the phone must be switched on and in a service area with adequate signal strength. Emergency calls may not be possible on all wireless phone networks or when certain network services and/or phone features are in use. Check with local service providers.

To make an emergency call, proceed as follows.

1. If the phone is not on, switch it on.
2. Key in the emergency number for your present location (for example, 112 or any other official emergency number). Emergency numbers vary by location.
3. Press the  key.

If certain features are in use (call barring, for example), you may first need to deactivate those features before you can make an emergency call. Consult this document and your local cellular service provider.

When making an emergency call, remember to give all the necessary information as accurately as possible. Remember that your phone may be the only means of communication at the scene of an accident; do not cut off the call until given permission to do so.

## Other Important Safety Information

---

- Only qualified personnel should service the phone or install the phone in a vehicle. Faulty installation or service may be dangerous and may invalidate any warranty applicable to the device.
- Check regularly that all wireless phone equipment in your vehicle is mounted and operating properly.
- Do not store or carry flammable liquids, gases or explosive materials in the same compartment as the phone, its parts or accessories.
- For vehicles equipped with an air bag, remember that an air bag inflates with great force. Do not place objects, including both installed or portable wireless equipment in the area over the air bag or in the air bag deployment area. If wireless equipment is improperly installed and the air bag inflates, serious injury could result.
- Switch your phone off before boarding an aircraft. The use of wireless phones in aircraft may be dangerous to the operation of the aircraft, and is illegal.
- Failure to observe these instructions may lead to the suspension or denial of telephone services to the offender, or legal action, or both.

## Care and Maintenance

---

Your phone is a product of superior design and craftsmanship and should be treated with care. The suggestions below will help you fulfill any warranty obligations and allow you to enjoy this product for many years.

- Keep the phone and all its parts and accessories out of the reach of small children's.
- Keep the phone dry. Precipitation, humidity and liquids contain minerals that will corrode electronic circuits.
- Do not use the phone with a wet hand. Doing so may cause an electric shock to you or damage to the phone.
- Do not use or store the phone in dusty, dirty areas, as its moving parts may be damaged.
- Do not store the phone in hot areas. High temperatures can shorten the life of electronic devices, damage batteries, and warp or melt certain plastics.
- Do not store the phone in cold areas. When the phone warms up to its normal operating temperature, moisture can form inside the phone, which may damage the phone's electronic circuit boards.
- Do not drop, knock or shake the phone. Rough handling can break internal circuit boards.
- Do not use harsh chemicals, cleaning solvents or strong detergents to clean the phone. Wipe it with a soft cloth slightly dampened in a mild soap-and-water solution.

- Do not paint the phone. Paint can clog the device's moving parts and prevent proper operation.
- Do not put the phone in or on heating devices, such as a microwave oven, a stove or a radiator. The phone may explode when overheated.
- Use only the supplied or an approved replacement antenna. Unauthorised antennas or modified accessories may damage the phone and violate regulations governing radio devices.
- If the phone, battery, charger or any accessory is not working properly, take it to your nearest qualified service facility. The personnel there will assist you, and if necessary, arrange for service.

## Glossary

To help you understand the main technical terms and abbreviations used in this booklet and take full advantage of the features of your mobile phone, here are a few definitions.

### **ALS (Alternate Line Service)**

Capability of associating two lines with one SIM card. With this service, you can make and receive calls on either line, as required.

### **Call Barring**

Ability to restrict outgoing and incoming calls.

### **Call Diverting**

Ability to reroute calls to another number.

### **Call Holding**

Ability to put one call on standby while answering or making another call; you can then switch between the two calls, as required.

### **Call Waiting**

Ability to inform users that they have an incoming call when engaged on another call.

### **CLI (Caller Line Identification) Services**

Services allowing subscribers to view or block the telephone numbers of callers.



**EMS (Enhanced Message Service)**

Network service sending and receiving messages that include images, sounds and animations to and from another user without having to speak to the correspondent.

**GPRS (General Packet Radio Service)**

New non-voice value-added service that allows information to be sent and received across a mobile telephone network. GPRS guarantees continuous connection to the Internet for mobile phone and computer users. It is based on the Global System for Mobile Communication (GSM) circuit-switched cellular phone connections and the Short Message Service (SMS).

**GSM  
(Global System for Mobile Communication)**

International standard for cellular communication, guaranteeing compatibility between the various network operators. GSM covers most European countries and many other parts of the world.

**IrDA (Infrared Data Association)**

A standard defined by the IrDA consortium. It specifies a way to wirelessly transfer data via infrared radiation. The IrDA specifications include standards for both the physical devices and the protocols they use to communicate with each other.

**Multi-party Calling**

Ability to establish a conference call involving up to five additional parties.

**PIN (Personal Identification Number)**

Security code that protects the phone/SIM against unauthorised use. The PIN is supplied by the service provider with the SIM card. It may be a four to eight-digit number and can be changed, as required.

**PUK (PIN Unblocking Key)**

Security code used to unlock the phone when an incorrect PIN has been entered three times in succession. The eight-digit number is supplied by the service provider with the SIM card.

**Roaming**

Use of your phone when you are outside your home area (when travelling for example).



**SIM (Subscriber Identification Module)**

Card containing a chip with all the information required to operate the phone (network and memory information, as well as the subscriber's personal data). The SIM card fits into a small slot on the back of the phone and is protected by the battery.

**SMS (Short Message Service)**

Network service sending and receiving messages to and from another subscriber without having to speak to the correspondent. The message created or received can be displayed, received, edited or sent.

### Soft Keys



Two keys marked  and  on the phone, the purpose of which:

- varies according to the function that you are currently using
- is indicated on the bottom line of the display just above the corresponding key

### Voice Mail


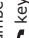

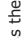
Computerised answering service that automatically answers your calls when you are not available, plays a greeting (optionally in your own voice) and records a message.

Access the Menu Functions	<ol style="list-style-type: none"> <li>① Press the <b>Menu</b> soft key in Idle mode.</li> <li>② Scroll with the Left or Down key through the main menus until you reach the menu you want.</li> <li>③ Scroll with the Up or Down key through the list of options until the option you want is selected.</li> <li>④ Press the <b>Select</b> soft key to confirm.</li> </ol>
---------------------------	---

Each of the two soft keys (  and  ) performs the function indicated by the text above them, on the bottom line of the display.



## SGH-S508 GPRS Telephone Quick Reference Card

Switch On/Off	Press and hold the  .
Make a Call	<ol style="list-style-type: none"> <li>① Enter the number.</li> <li>② Press the .</li> </ol>
End a Call	Press the  .
Answer a Call	Open the phone or Press the  .
Adjust the Volume	Press the Volume keys on the left side of the phone.

Redial the Last Number	Press the <b>↩</b> key twice.
Speed-Dial	In Idle mode, press and hold the appropriate key ( <b>2</b> to <b>9</b> ). Or, press the key and the # key.
Dial a Number in Your SIM Card	Enter the SIM location, press the # key, and press the <b>↩</b> key.
Listen to Your Voice Mail	Press and hold the <b>1</b> key.

Store Numbers in Phonebook	<ol style="list-style-type: none"> <li>Enter the number.</li> <li>Press the <b>Save</b> soft key.</li> <li>Select the memory type and press the <b>Ok</b> soft key.</li> <li>If you select <b>Phone</b>, select the number type and press the <b>Ok</b> soft key.</li> <li>Enter the name and press the <b>Ok</b> soft key.</li> <li>If you select <b>SIM</b>, enter the location number and press the <b>Ok</b> soft key.</li> </ol>
Search for a Number in Phonebook	<ol style="list-style-type: none"> <li>Press the <b>Phonebook</b> soft key in Idle mode.</li> <li>Select <b>Find name</b>.</li> <li>Enter a name.</li> <li>Press the <b>Ok</b> soft key.</li> <li>Press the Left or Right key, if necessary.</li> <li>Press the <b>↩</b> key to dial.</li> </ol>