



# SGH-C408 User's Guide





# Important safety precautions



Failure to comply with the following precautions may be dangerous or illegal.

## **Drive safely at all times**

Do not use a hand-held phone while driving. Park the vehicle first.

## **Switch off the phone when refuelling**

Do not use the phone at a refuelling point (service station) or near fuels or chemicals.

## **Switch off in an aircraft**

Wireless phones can cause interference. Using them in an aircraft is both illegal and dangerous.

## **Switch off the phone near all medical equipment**

Hospitals or health care facilities may be using equipment that could be sensitive to external radio frequency energy. Follow any regulations or rules in force.

## **Interference**

All wireless phones may be subject to interference, which could affect their performance.



## Be aware of special regulations

Meet any special regulations in force in any area and always switch off your phone whenever it is forbidden to use it, or when it may cause interference or danger.


## Water resistance

Your phone is not water-resistant. Keep it dry.

## Sensible use

Use only in the normal position (held to the ear). Avoid unnecessary contact with the antenna when the phone is switched on.

## Emergency calls

Key in the emergency number for your present location, then press .

## Keep your phone away from small children

Keep the phone and all its parts, including accessories, out of the reach of small children.

## Accessories and batteries

Use only Samsung-approved batteries and accessories, such as headsets and PC data cables. Use of any unauthorised accessories could damage you and your phone and may be dangerous.

- The phone could explode if the battery is replaced with an incorrect type.
- Dispose of used batteries according to the manufacturer's instructions.



At very high volumes, prolonged listening to a headset can damage your hearing.

## Qualified service

Only qualified service personnel may repair your phone.

For more detailed safety information, see "Health and safety information" on page 75.

# About this Guide

This User's Guide provides you with condensed information about how to use your phone. To quickly learn the basics for your phone, please refer to "Get started" and "Step outside the phone."

In this guide, the following instruction icons appear:



Indicates that you need to pay careful attention to the subsequent information regarding safety or phone features.



Indicates that you can get more information on the referenced page.



Indicates that you need to press the Navigation keys to scroll to the specified option and then select it.

[ ] Indicates a key on the phone. For example, [  ]

< > Indicates a soft key, whose function is displayed on the phone screen. For example, <Menu>



- **Camera**

Use the camera module on your phone to take a photo.

## *Special features of your phone*



- **Java**

Enjoy Java™-based embedded games and download new games.



- **WAP browser**

Access the wireless web to get up-to-the-minute information and a wide variety of media content.



- **Multimedia Message Service (MMS)**

Send and receive MMS messages with a combination of text, images, and audio.



- **Phonebook**

Store home, office, or cellular phone numbers for your contacts.



- **Get personal with photo caller ID**

See who's calling you when their very own photo displays.



- **Voice recorder**

Record memos or sounds.



- **Calculator**

Perform basic calculations and do currency conversions.



- **Organizer**

Keep track of your daily and monthly schedules and tasks.



- **Alarm**

Use your phone as an alarm clock to wake you up in the morning or notify you of an impending event.

## Contents

### **Unpack 6**

*Make sure you have each item*

### **Your phone 6**

*Buttons, features, and locations*

### **Get started 7**

*First steps to operating your phone*

Install and charge the phone ..... 7

Power on or off ..... 9

Keys and display ..... 9

Access menu functions ..... 12

Customise your phone ..... 13

Make/Answer calls ..... 15

### **Step outside the phone 15**

*Begin with your camera, web browser, and other special features*

Use the camera ..... 15

Browse the web ..... 16

Use Phonebook ..... 16

Send messages ..... 17

View messages ..... 19

Send an SOS message ..... 20

### **Enter text 21**

*Pinyin, Stroke, Quick english, English, Number, and Symbol modes*

### **Call functions 28**

*Advanced calling features*

### **Menu functions 32**

*All menu options listed*

### **Solve problems 73**

*Help and personal needs*

### **Health and safety information 75**

## Overview of menu functions

To access Menu mode, press **<Menu>** in Idle mode.

<b>1 SIM AT<sup>1</sup></b>	p. 36	<b>4 Sound settings (continued)</b>		<b>6 Funbox (continued)</b>		<b>9 Phone settings (continued)</b>	
<b>2 Call records</b>	p. 36	5 Message tone	p. 42	5 Images	p. 58	5 Security	p. 70
1 Missed calls	p. 37	6 Folder tone	p. 42	6 Delete all	p. 58	6 Extra settings	p. 71
2 Received calls	p. 37	7 Power on/off	p. 42	7 Memory status	p. 58	7 Side key	p. 72
3 Dialed calls	p. 37	8 Alert on call	p. 42	<b>7 Organizer</b>	p. 58	8 Short cut	p. 72
4 Delete all	p. 37	9 Extra tones	p. 43	1 Alarm	p. 58	9 Reset settings	p. 72
5 Call time	p. 37	<b>5 Messages</b>	p. 43	2 Calendar	p. 59		
6 Call costs <sup>1</sup>	p. 38	1 Text messages	p. 43	3 Time & date	p. 61		
<b>3 Network services</b>	p. 38	2 Multimedia messages	p. 47	4 Calculator	p. 62		
1 Call diverting	p. 39	3 Push messages	p. 51	5 To do list	p. 62		
2 Call barring	p. 39	4 Delete all	p. 51	6 Voice memo	p. 63		
3 Call waiting	p. 40	5 Voice mail	p. 52	7 Currency exchange	p. 64		
4 Network selection	p. 40	6 SOS messages	p. 52	<b>8 Camera</b>	p. 64		
5 Caller ID	p. 40	7 Broadcast messages	p. 53	1 Take photos	p. 65		
6 Closed user group	p. 41	8 Memory status	p. 53	2 My photos	p. 67		
<b>4 Sound settings</b>	p. 41	<b>6 Funbox</b>	p. 54	3 Memory status	p. 68		
1 Ring tone	p. 41	1 WAP browser	p. 54	<b>9 Phone settings</b>	p. 68		
2 Ring volume	p. 41	2 Fun club	p. 56	1 Display settings	p. 68		
3 Alert type	p. 41	3 Games	p. 57	2 Greeting message	p. 69		
4 Keypad tone	p. 42	4 Sounds	p. 57	3 Own number	p. 70		
				4 Language	p. 70		

Press **<Ph.Book>** in Idle mode.

<b>Phonebook</b>	p. 32
1 Search	p. 32
2 Add entry	p. 33
3 Group search	p. 34
4 Group edit	p. 34
5 Speed dial list	p. 34
6 Delete all	p. 35
7 Memory status	p. 36
8 SDN <sup>1</sup>	p. 36

1. Shows only if supported by your SIM card.

## Unpack

*Make sure you have each item*

- Phone
- Travel adapter
- Battery
- User's Guide

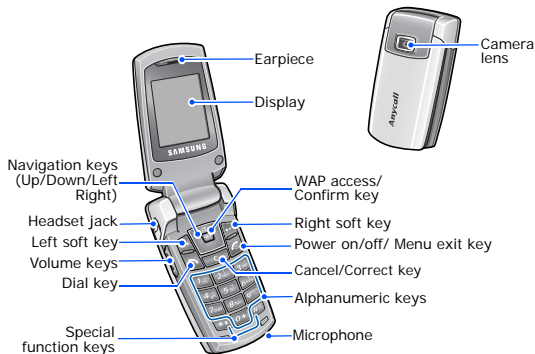
You can obtain various accessories from your local Samsung dealer.



- The items supplied with your phone and the accessories available at your Samsung dealer may vary, depending on your country or service provider.
- Use the purchased accessories with only Samsung-authorized devices. The use of these accessories with other devices could cause problems and any repair costs would not be covered by the warranty.

## Your phone

*Buttons, features, and locations*





## Get started


*First steps to operating your phone*

### SIM card information

When you subscribe to a cellular network, you receive a plug-in SIM (Subscriber Identity Module) card loaded with your subscription details, such as your PIN, and available optional services.

### Install and charge the phone

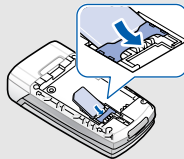
- 1 Remove the battery cover.

- ✓ If the phone is already on, first turn it off by pressing and holding [  ].

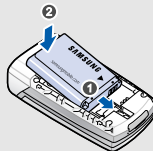


- 2 Insert the SIM card.

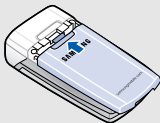
- ✓ Make sure that the gold-coloured contacts on the card are face down.



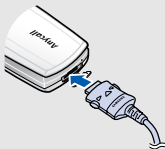
- 3 Install the battery.



- 4 Reattach the cover.



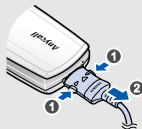
- 5 Plug the travel adapter into the phone.



- 6 Plug the adapter into a standard AC power outlet.


- 7 When the phone is completely charged (the battery icon becomes still), unplug the adapter from the power outlet.

- 8 Remove the adapter from the phone.



### Low battery indicator

When the battery is low:


- a warning tone sounds,
- the battery low message displays, and
- the empty battery icon () blinks.

If the battery level becomes too low, the phone automatically turns off. Recharge your battery.

## Power on or off

### Switch on

1. Open the phone.


2. Press and hold [  ].

Do not turn on the phone when mobile phone use is prohibited.

3. If necessary, enter the PIN and press <**OK**>.

### Switch off

1. Open the phone.

2. Press and hold [  ].

## Keys and display

### Keys



Perform the function indicated on the bottom line of the display.



In Idle mode, access your favorite menus directly. ► p. 72

In Menu mode, scroll through menu options.



In Idle mode, launch the web browser.

In Menu mode, select the highlighted menu option or confirm input.



Make or answer a call.

In Idle mode, retrieve the numbers recently dialed, missed, or received.



Delete characters from the display.

In Menu mode, return the display to the previous menu level.



Press and hold to switch the phone on or off.

End a call.

In Menu mode, cancel input and return the phone to Idle mode.



Enter numbers, letters, and some special characters.



In Idle mode, press and hold [1] to access your voicemail server. Press and hold [0] to enter an international call prefix.



Enter special characters.



In Idle mode, press and hold [#] to activate or deactivate Silent mode.

Press and hold [\*] to enter a pause between numbers.

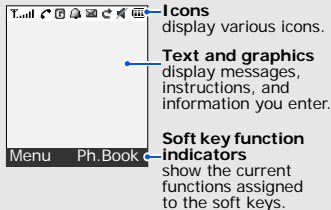


Adjust the phone volume.

In Idle mode, adjust the key tone volume.

## Display

### Layout



### Icons<sup>1</sup>

- Received signal strength
- GPRS network
- Call in progress
- Out of your service area; you cannot make or receive calls

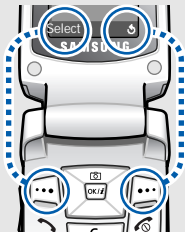
- Call diverting feature active  
▶ p. 39
- Roaming network
- New text message
- New voicemail message
- New multimedia message
- Alarm set ▶ p. 58
- SOS message feature active ▶ p. 52
- Silent mode ▶ p. 14
- Call ringer set to vibrate  
p. 41
- Battery power level

1. Depending on your country or service provider, the icons shown on the display may vary.

## Access menu functions

### Use the soft keys

The roles of the soft keys vary depending on the function you are using. The bottom line of the display indicates their current role.



Press the left soft key to select the highlighted option.

Press the right soft key to return to the previous menu level.

### Select an option

1. Press a desired soft key.
2. Press the Navigation keys to move to the next or previous option.
3. Press **<Select>** or [**OK/↗**] to confirm the function displayed or option highlighted.
4. To exit, choose either of the following methods:
  - Press **<↶>** or [**C**] to move up one level.
  - Press [**⌂**] to return to Idle mode.

### Use shortcuts

Press the number key corresponding to the option you want.

## Customise your phone

### Display language

1. In Idle mode, press **<Menu>** and select **Phone settings** → **Language**.
2. Select a language.

### Call ringer melody

1. In Idle mode, press **<Menu>** and select **Sound settings** → **Ring tone**.
2. Select a ringtone.

### Idle mode wallpaper

You can set wallpaper for the idle screen.

1. In Idle mode, press **<Menu>** and select **Phone settings** → **Display settings** → **Wallpaper** → **Wallpaper list**.

2. Select an image name.
3. Press **<Select>** to save the wallpaper.

### Menu shortcuts

You can set [Down], [Left], and [Right] to function as shortcuts to access your favorite menus.

1. In Idle mode, press **<Menu>** and select **Phone settings** → **Short cut**.
2. Select a key.
3. Select the menu to be assigned to the key.

### Switch to Silent mode

You can switch the phone to Silent mode to avoid disturbing other people.

Press and hold [**#**] in Idle mode.

### Phone lock

You can protect the phone against unauthorised use with a phone password. The phone will require the password on power-up.



1. In Idle mode, press **<Menu>** and select **Phone settings** → **Security** → **Change password**.

2. Enter the default password, **00000000**, and press **<OK>**.
3. Enter a new 4- to 8- digit password and press **<OK>**.
4. Enter the new password again and press **<OK>**.
5. Select **Phone lock**.
6. Select **Enable**.
7. Enter the password and press **<OK>**.





## Make/Answer calls

### Make a call

1. Enter an area code and phone number.
2. Press [].
3. To end the call, press [].

### Answer a call

1. When the phone rings, press [].
2. To end the call, press [].

### Adjust the volume during a call



Press [Volume].

## Step outside the phone

*Begin with your camera, web browser, and other special features*

## Use the camera

### Take a photo

1. Open the phone.
2. In Idle mode, press and hold [Up] to turn on the camera.
3. Aim the lens at the subject and adjust the image.
4. Press [**OK**/] to take a photo.
5. Press <**Save**>.
6. Press <> to take another photo.

---

#### View a photo

1. In Idle mode, press [Up] and select **My photos**.
2. Select the photo you want.

## Browse the web

Using a built-in web browser, you can easily access the wireless web to get a variety of up-to-date services and information and to download web content.

---

#### Launch the browser

In Idle mode, press [**OK/**].

---

#### Navigate the browser

- To scroll through browser items, press [Up] or [Down].
- To select an item, press [**OK/**].

- To return to the previous page, press [**C**].
- To access browser options, press and hold [**\***].

## Use Phonebook

---

#### Add an entry

To the phone's memory:

1. In Idle mode, enter a phone number and press <**Save**>.
2. Select a number type.
3. Select **Phone**.
4. Enter a name and press <**OK**> *twice*.
5. Press <**OK**> to save the contact.

---

### To the SIM card:

1. In Idle mode, enter a phone number and press **<Save>**.
2. Select a number type.
3. Select **SIM**.
4. Enter a name and press **<OK>** *twice*.

Press **<OK>** to save the contact.

---

### Find an entry

1. In Idle mode, press **<Ph.Book>** and select **Search**.
2. Enter a name.
3. Select a contact.

4. Scroll to a number, and press [**↶**] to dial or **<Options>** to access options.

---

## Send messages

### Send a text message (SMS)

1. In Idle mode, press **<Menu>** and select **Messages** → **Text messages** → **Create**.
2. Enter the message text.
3. Press **<Options>** and select **Save and send** or **Send only**.

**Send a text message (SMS)**  
(continued)

4. If you selected **Save and send**, select a memory location.
5. Enter a destination number and press <**Options**> and select **Send message**.

**Send a multimedia message (MMS)**

1. In Idle mode, press <**Menu**> and select **Messages** → **Multimedia messages** → **Create**.
2. Enter the message subject and press <**Next**>.
3. Select **Add here**.
4. Select an adding option and add message contents.

5. When you have finished, press <**Options**> and select **Send**.
6. Enter a destination number or an e-mail address.
7. Press <**Options**> and select **Send**.

## View messages

### View a text message

When a notification appears:

Press <**View**>. The message displays.

From the Inbox:

1. In Idle mode, press <**Menu**> and select **Messages** → **Text messages** → **Inbox**.
2. Select a message.

### View a multimedia message

When a notification appears:

Press <**View**>. The message displays.

From the Inbox:

1. In Idle mode, press <**Menu**> and select **Messages** → **Multimedia messages** → **Inbox**.
2. Select a message.

## Send an SOS message

You can send an SOS message to your family or friends for help in an emergency.

### Set up SOS message options

1. In Idle mode, select **<Menu>** → **Messages** → **SOS messages** → **Sending options** → **Recipients**.
2. Select an empty location and press **<Options>** → **Edit**.
3. Enter a phone number to which you want to send the SOS message and press **<OK>**.  
To add phone numbers, repeat step 2 and 3.

---

4. Press **<🔄>**.

5. Select **Sending SOS** → **On**.

6. Select **<Yes>** to send the notification to the registered numbers.

---

### Send the SOS message

In Idle mode, press [Volume] 4 times with the phone closed.

The phone sends the SOS message.

## Enter text

*Pinyin, Stroke, Quick english, English, Number, and Symbol modes*

You can enter text for some features such as Messages, Phonebook, or Organizer, using Pinyin and stroke modes for Chinese and Quick english and English modes for English. You can also enter numbers and symbols.

### Changing the text input mode

- Press the right soft key and select the text input mode you want.

Pinyin (📖)

CHN S stroke (📖)

CHN T stroke (📖)

Quick english (T9)

English (A)

Number (1)

Symbolic (None)

- Press and hold [\*] to quickly switch to Symbol mode.

### Using Pinyin mode

Pinyin is a system to enter Chinese words by spelling them phonetically (how they sound) using the Latin alphabet. With the Pinyin input method, you can enter Chinese characters by keying in the Pinyin string using the phone's keypad.

#### Entering characters in Pinyin mode

- Press the keys corresponding to the phonetic spelling, referring to the letters printed on the keys.  
**Example:** To enter 力 (L), press [5] and [4].
- Press [Left] or [Right] to select alternative pinyins for the keys you have pressed.

3. If you cannot find the character you want from the display, press [Up] or [Down] to scroll through choices.
4. Press [**1**] to activate the character selection field. To select a character and add it to your message, press the corresponding key, [**7**] to [**\***].
5. Press the number key corresponding to the character you want.

### **Rapid character entry**

When you enter a character, the phone automatically displays words or phrases that are frequently used with the entered character in the character selection field. This function allows you to enter phrases or words with minimal key presses.

### **Other Pinyin mode operations**

- Press [**#**] to insert a space.
- Press [Left] or [Right] to move the cursor.
- Press [**C**] to clear letters one by one. Press and hold [**C**] to clear the entire display.

### **Using Chinese Stroke modes**

These modes allow you to enter individual Chinese strokes, in written order, from top to bottom, and from left to right.

The Chinese strokes are classified into five basic categories; heng, shu, pie, dian, and zhe. The basic strokes are printed on keys [**1**] to [**5**] on the keypad.



Refer to the following table:

Category	Key	Strokes in each category
一	1	一 丿
丨	2	丨 冂
丿	3	丿 ㇏
丶	4	丶 ㇀ ㇁
→	5	㇀ ㇁ ㇂ ㇃ ㇄ ㇅ ㇆ ㇇ ㇈ ㇉ ㇊ ㇋ ㇌ ㇍ ㇎ ㇏ ㇐ ㇑ ㇒ ㇓ ㇔ ㇕ ㇖ ㇗ ㇘ ㇙ ㇚ ㇛ ㇜ ㇝ ㇞ ㇟ ㇠ ㇡ ㇢ ㇣ ㇤ ㇥ ㇦ ㇧ ㇨ ㇩ ㇪ ㇫ ㇬ ㇭ ㇮ ㇯ ㇰ ㇱ ㇲ ㇳ ㇴ ㇵ ㇶ ㇷ ㇸ ㇹ ㇺ ㇻ ㇼ ㇽ ㇾ ㇿ 乙

## Entering strokes and characters in Stroke modes

1. Press the keys that correspond to a character's component strokes. Press keys in the order that you would write the strokes, using one press per stroke.

**Example:** To enter 力, press [5] to enter → and then [3] to enter 丿.



If you are uncertain of the stroke order, press [6] in place of each questionable stroke. Continue entering strokes until the character displays or until you finish the character.

2. Press [Up] or [Down] to scroll through the choices.
3. To select a character and add it to your message, press the corresponding key, [7] to [\*].

## Other Stroke mode operations

- Press [#] to insert a space.
- Press [Left] or [Right] to move the cursor.
- Press [C] to clear letters one by one. Press and hold [C] to clear the entire display.

## Using Quick english mode

T9 is a predictive text input mode that allows you to key in any character using single keystrokes.

### Entering a word in Quick english mode

1. Press [2] to [9] to start entering a word. Press each key once for each letter. For example, press [4], [3], [5], [5], and [6] to enter *Hello* in T9 mode. T9 predicts the word that you are typing, and it may change with each key that you press.
2. Enter the whole word before editing or deleting characters.
3. When the word displays correctly, go to step 4. Otherwise, press [0] to display

alternative word choices for the keys that you have pressed.

For example, *Of* and *Me* use [6] and [3].

4. Press [#] to insert a space and enter the next word.

### Other Quick english mode operations

- Press [1] to enter periods or apostrophes automatically.
- Press [\*] to change case. Initial capital, Capital lock, and Lower case are available.
- Press [#] to insert a space.
- Press the Navigation keys to move the cursor.
- Press [C] to delete characters one by one. Press and hold [C] to clear the display.

## Adding a new word to the Quick english dictionary

This feature may not be available for some languages.

1. Enter the word that you want to add.
2. Press [**O**] to display alternative words for your key presses. When there are no more alternative words, **Add** displays on the bottom line.
3. Press <**Add**>.
4. Enter the word you want using English mode and press <**OK**>.

## Using English mode

Press the appropriate key until the character you want appears on the screen.

Key	Characters in order displayed	
	Upper case	Lower case
1	. , - ? ! @ : ( ) / # _ ~ 1	
2	A B C 2	a b c 2
3	D E F 3	d e f 3
4	G H I 4	g h i 4
5	J K L 5	j k l 5
6	M N O 6	m n o 6
7	P Q R S 7	p q r s 7
8	T U V 8	t u v 8
9	W X Y Z 9	w x y z 9
0	Space + = < > € £ \$ % & ¥ ¤ 0	

## Other ABC mode operations

- To enter the same letter twice or to enter a different letter on the same key, wait for the cursor to move to the right automatically or press [Right]. Then, enter the next letter.
- Press [**\***] to change case. Initial capital, Capital lock, and Lower case are available.
- Press [**#**] to insert a space.
- Press the Navigation keys to move the cursor.
- Press [**C**] to delete characters one by one. Press and hold [**C**] to clear the entire display.

## Using Number mode

Number mode enables you to enter numbers. Press the keys corresponding to the digits you want.

## Using Symbol mode

Symbol mode enables you to insert symbols.

To	Press
scroll to a symbol set	[Up] or [Down].
select a symbol	the corresponding number key.
clear the symbols	[C].
insert the symbols	<OK>.

## Using My Words mode

My Words mode enables you to preset Chinese words or phrases so that you can quickly and easily insert them into your text while creating a message.

## Adding a word or phrase to the My words list

1. Press the right soft key and select **My words**.
2. When **Add word** is highlighted, press **<Select>**.
3. Enter a word or phrase and press **<OK>**.
4. Enter a name to assign to the word in English mode and press **<OK>**.  
The word or phrase is added to the My words list.

## Using My words items

1. Press the right soft key and select **My words**.
2. Scroll to the word you want from the list.
3. Press **[OK/i]** to insert your selection.

## Using Help mode

On-screen help for the text input modes is available when creating a message.

Press the right soft key and select **Help** to access this mode.

## *Call functions*

### *Advanced calling features*

#### **Making a call**

1. In Idle mode, enter the area code and phone number.



- Press [C] to clear the last digit or press and hold [C] to clear the whole display. You can move the cursor to edit an incorrect digit.
- Press and hold [\*] to enter a pause between numbers.

2. Press [↵].
3. When you want to end the call, press [📞].

#### **Making an international call**

1. In Idle mode, press and hold [0]. The + character appears.

2. Enter the country code, area code, and phone number, then press [↵].

#### **Redialling recent numbers**

1. In Idle mode, press [↵] to display the list of recent numbers.
2. Scroll to the number you want and press [↵].

#### **Making a call from Phonebook**

Once you have stored a number in Phonebook, you can dial the number by selecting it from Phonebook. ► p. 32

You can also use the speed dial feature to assign your most frequently dialed numbers to specific number keys. ► p. 34

You can quickly dial a number from Phonebook using its location number assigned when stored.

To dial a number from the phone's memory:

1. In Idle mode, press and hold [0]. A + appears.
2. Enter the location number for the phone number you want and press [#].
3. Press [Up] or [Down] to scroll through other numbers.
4. Press <Dial> or [↶] to dial the number you want.

To dial a number from the SIM card:

1. In Idle mode, enter the location number for the phone number you want and press [#].
2. Press [Up] or [Down] to scroll through other numbers.
3. Press <Dial> or [↶] to dial the number you want.

## Answering a call

When you receive a call, the phone rings and displays the incoming call image.

Press <Accept> or [↶] to answer the call.

## Tips for answering a call

- When **Anykey answer** is active, you can press any key, except for <Reject>, [Volume] and [🔇]. ▶ p. 72
- When **Active folder** is active, you can simply open the phone. ▶ p. 71
- Press <Reject> or [🔇] to reject a call.
- Press and hold [Volume] to reject a call or mute the ringer, depending on the **Side key** setting. ▶ p. 72

## Viewing missed calls

If you have missed calls, the screen displays how many calls you have missed.

1. Press <View>.
2. If necessary, scroll through the missed calls.
3. Press [↶] to dial the number you want.

## Using the headset

Use the headset to make or answer calls without holding the phone.

Connect the headset to the jack on the left side of the phone. The button on the headset works as follows:

To	Press
redial the last call	the button twice.
answer a call	the button once.
end a call	the button once.

## Options during a call

You can access a number of functions during a call.

### Adjusting the volume during a call

Use [Volume] to adjust the earpiece volume during a call.


Press [Volume up] to increase the volume level and [Volume down] to decrease the volume level.

## Placing a call on hold/Retrieving

Press <**Hold**> to place a call on hold, or press <**Unhold**> to retrieve the call.

## Answering a second call

You can answer an incoming call while already on the phone, if your network supports this function, and you have activated the call waiting feature. ► p. 40

1. Press [>] to answer the call. The first call is automatically put on hold.
2. Press <**Swap**> to switch between the calls.
3. Press <**Options**> and select **End held call** to end the call on hold.



4. To end the current call, press [].

## Using In-call options

Press <**Options**> to access the following options during a call:

- **Menu:** access the phone's menu functions.
- **Mute/Unmute:** switch off the phone's microphone so that the other person on the phone cannot hear you, or switch it back on.
- **Mute keys/Send keys:** switch the key tones off or on.



To communicate with answering machines or computerized telephone systems, **Send keys** must be selected.

- **Send DTMF:** send the DTMF (Dual tone multi-frequency) tones as a group. The DTMF tones are the tones used in phones for tone dialling, sounding when you press the number keys. This option is helpful for entering a password or an account number

when you call an automated system, like a banking service.

- **Phonebook:** access the contact list.
- **End held call:** disconnect the call currently on hold.
- **Join:** set up a multi-party call by adding a caller on hold to a currently active call. You can include up to 5 people on a multi-party call.
- **Select one:** select one of the multi-party call participants. You can then use the following options:

**Private:** have a private conversation with the selected participant. The other participants can converse with each other. After the private conversation, select **Join** to return both private participants to the multi-party call.

**Remove:** disconnect the selected call participant.

## *Menu functions*

*All menu options listed*

### Phonebook

You can store phone numbers on your SIM card and in your phone's memory. The SIM card and phone's memory are physically separate, but they are used as a single entity called Phonebook.

To access this menu, press **<Ph.Book>** in Idle mode.

### Search

---

Use this menu to search for numbers in Phonebook.

### Finding an entry

1. Enter the first few letters of the name that you want to find.
2. Select the name you want from the list.
3. Scroll to a number, and press [**↵**] to dial or **<Options>** to access the Phonebook options.

### Using Phonebook options

While viewing numbers in a Phonebook entry, press **<Options>** to access the following options:

- **Photo caller ID:** assign a caller ID image to the entry.  
**Select a photo:** select one of the photos you have taken.  
**Take photo:** take a new photo.  
**View:** view the caller ID image set for the entry.

**Delete caller ID:** remove the caller ID image set for the entry.





- **Edit:** change the number or name of the entry.
- **Copy:** copy the number to the phone's memory or SIM card.
- **Paste:** paste the number into the dialling screen.
- **Delete:** delete the number from Phonebook.
- **Caller group:** assign the number to a caller group.
- **Add entry:** add a new number.

## Add entry

---

Use this menu to add a new contact to Phonebook.

## Storing a contact in the phone's memory

1. Select a number type.
  -  Mobile phone number
  -  Office phone number
  -  Home phone number
  -  E-mail address; an e-mail address can be stored only in the phone's memory.
2. Select **Phone**.
3. Enter a name and press <OK> twice.
4. Enter a number or an e-mail address and press <Save>.
5. Change the location number, if you want, and press <OK>.

## Storing a contact on the SIM card

1. Select a number type.

2. Select **SIM**.
3. Enter a name and press <**OK**> twice.
4. Enter a number and press <**Save**>.
5. Change the location number, if you want, and press <**OK**>.

### Group search

---

Use this menu to search for your contacts in Phonebook in caller groups.

1. Enter the first few letters of the group name.
2. Select the group you want.
3. Select the name you want in the group.
4. Scroll to a number, and press [**↵**] to dial the number or <**Options**> to access the Phonebook options.

### Group edit

---

Use this menu to edit the caller groups' properties.

Select a group and change the group settings by using the following options:

- **Call ringtone**: set a ringtone for incoming calls from the group members.
- **SMS tone**: set a ringtone for incoming messages from the group members.
- **Graphic**: set a graphic icon for incoming calls from the group members.
- **Group name**: assign a name to the group.

### Speed dial list

---

Use this menu to assign speed dial numbers (2 to 9) for 8 of your most frequently dialed numbers.

## Assigning speed dial numbers

1. Select a key location from 2 to 9. Key 1 is reserved for your voice mail server; It may vary, depending on your country or service provider.
2. Select the name you want from the Phonebook list.
3. Select the number you want.

## Managing speed dial entries

From the Speed dial list, press <**Options**> to access the following options:

- **Change**: assign a different number to a key.
- **Delete**: delete the setting for the key.
- **Delete all**: delete the settings for all keys.
- **Number**: check the number assigned to the key.

## Dialling speed dial numbers

In Idle mode, press and hold the appropriate key.

### Delete all

---

Use this menu to delete all of the contacts from your phone's memory, your SIM card, or both.

1. Press [**OK/i**] to select the memory locations to be cleared.
2. Press <**Delete**>.
3. Enter the phone password and press <**OK**>.



The password is preset to **00000000**.  
You can change this password. ► p. 71

4. Press <**Yes**> twice to confirm the deletion.

## Memory status

---

Use this menu to check the number of the contacts you have stored in the phone's memory and on the SIM card.

## SDN

---

Use this menu to view the list of Service Dialling Numbers (SDN) assigned by your service provider, including emergency numbers and numbers for directory enquiries. This menu is available if your SIM card supports SDN.

1. Scroll to the number you want and press **<View>**.
2. Press **<Dial>** or [**↵**].

## SIM AT *(Menu 1)*

This menu is available if you use a SIM AT card that provides additional services, such as news, weather, sports, entertainment, and location services. Available services may vary, depending on your service provider's plans. For details, see your SIM card instructions or contact your service provider.

To access this menu, press **<Menu>** in Idle mode and select **SIM AT**.

## Call records *(Menu 2)*

Use this menu to view the calls you have dialed, received, or missed, and the length of calls. You can also check the cost of your calls, if your SIM card supports this function.

To access this menu, press **<Menu>** in Idle mode and select **Call records**.

### Missed calls *(Menu 2.1)*

---

This menu displays the most recent calls you did not answer.

While viewing call details, press <**Options**> to access the following options:

- **Edit**: change the number to dial or save it.
- **Delete**: delete the record.

### Received calls *(Menu 2.2)*

---

This menu displays the most recent calls you have received.

### Dialled calls *(Menu 2.3)*

---

This menu displays the most recent calls you have dialed.

### Delete all *(Menu 2.4)*

---

Use this menu to delete all of the records in each call type.

1. Press [**OK/↓**] to select the call types to be cleared.
2. Press <**Delete**>.
3. Press <**Yes**> twice to confirm the deletion.

### Call time *(Menu 2.5)*

---

This menu displays the time log for calls made and received. The actual time invoiced by your service provider will vary.

- **Last call time**: check the length of your last call.
- **Total sent**: check the total length of all the calls you have dialed.
- **Total received**: check the total length of all the calls you have received.

- **Reset timers:** reset the call timers. You need to enter the phone password.



The password is preset to **00000000**.  
You can change this password. ► p. 71

### Call costs *(Menu 2.6)*

---

This network feature displays the cost of calls. This menu is available only if your SIM card supports this feature. Note that this is not intended to be used for billing purposes.

- **Last call cost:** check the cost of your last call.
- **Total cost:** check the total cost of all of your calls. If the total cost exceeds the maximum cost set in **Set max cost**, you must reset the counter before you can make another call.

- **Max cost:** check the maximum cost limit set in **Set max cost**.
- **Reset counters:** reset the cost counters.
- **Set max cost:** set the maximum cost authorised for your calls.
- **Price/unit:** set the price per unit that is applied when the cost of your calls is calculated.

### Network services *(Menu 3)*

Use this menu to access network services. Please contact your service provider to check their availability and subscribe to them, if you wish.

To access this menu, press <**Menu**> in Idle mode and select **Network services**.



## Call diverting *(Menu 3.1)*

---

This network service reroutes incoming calls to a phone number that you specify.

1. Select a call diverting option:
  - **Divert always:** divert all calls.
  - **Busy:** divert calls when you are on another call.
  - **No reply:** divert calls when you do not answer the phone.
  - **Unreachable:** divert calls when you are not in your service area or when your phone is switched off.
  - **Cancel all:** cancel all call diverting options.
2. Select the type of calls to be diverted.
3. Press **<Activate>**. To deactivate call diverting, press **<Options>** and select **Remove**.
4. Enter the number to which calls are to be diverted and press **<OK>**.

5. If you selected **No reply**, select the length of time the network delays before diverting a call.

## Call barring *(Menu 3.2)*

---

This network service allows you to restrict your calls.

1. Select a call barring option:
  - **All outgoing:** prohibit all outgoing calls.
  - **International:** prohibit international calls.
  - **International except home:** only allow calls to numbers within the current country when you are abroad, and to your home country.
  - **All incoming:** prohibit incoming calls.
  - **Incoming while abroad:** prohibit incoming calls when you use your phone outside of your home country.

## Menu functions

- **Cancel all:** cancel all call barring settings, allowing calls to be sent and received normally.
  - **Change barring password:** change the call barring password obtained from your service provider.
2. Select the type of calls to be barred.
  3. Press <**Activate**>. To deactivate call barring, press <**Deactivate**>.
  4. Enter the call barring password supplied by your service provider and press <**OK**>.

### Call waiting (Menu 3.3)

---

This network service informs you when someone is trying to reach you while you are on another call.

1. Select the type of calls to which the call waiting option will apply.
2. Press <**Activate**>. To deactivate call waiting, press <**Deactivate**>.

### Network selection (Menu 3.4)

---

This network service allows you to either automatically or manually select the network used when roaming outside of your home area. You can select a network other than your home network only if there is a valid roaming agreement between the two.

### Caller ID (Menu 3.5)

---

This network service allows you to prevent your phone number from being displayed on the phone of the person being called. If you select **Default**, the phone will use the default setting provided by the network.



Some networks may not allow you to change this setting.

## Closed user group *(Menu 3.6)*

---

Use this menu to set incoming and outgoing calls to be restricted to a selected user group. For details about how to create a closed user group, contact your service provider.

- **Index list:** list, add, or delete CUG index numbers. Press <**Options**> to access the options for setting up an index list.
- **Outside access:** enable calls to numbers other than those in the Closed user group. This feature depends on the nature of your CUG subscription.
- **Default group:** enable the default CUG, if you have set one with your service provider. When making a call, you are given the option of using your default CUG, instead of selecting one from the list.
- **Deactivate:** deactivate the CUG function, if the default group is enabled or a CUG index is selected.

## Sound settings *(Menu 4)*

The **Sound settings** menu allows you to customise various sounds on the phone.

To access this menu, press <**Menu**> in Idle mode and select **Sound settings**.

### Ring tone *(Menu 4.1)*

---

Use this menu to select a ringtone for the call ringer. You can select one of the embedded ring melodies, downloaded sounds, or melodies you have created.

### Ring volume *(Menu 4.2)*

---

Use this menu to adjust the ringtone volume.

### Alert type *(Menu 4.3)*

---

Use this menu to specify how you are to be informed of incoming calls.

- **Melody:** the phone plays the selected ringtone.
- **Vibration:** the phone vibrates but not rings.
- **Vibra+melody:** the phone vibrates three times and then starts ringing.

### Keypad tone *(Menu 4.4)*

---

Use this menu to select the tone that the phone sounds when you press a key.



You can adjust the key tone volume using [Volume] in Idle mode.

### Message tone *(Menu 4.5)*

---

Use this menu to select a ringtone or alert type for incoming messages.

- **SMS tone:** specify how you are informed of a new SMS message.
- **SMS-CB tone:** specify how you are informed of a new broadcast message.

- **MMS tone:** specify how you are informed of a new MMS message.
- **Repetition:** specify whether or not the phone repeats alerting you to a new message.

### Folder tone *(Menu 4.6)*

---

Use this menu to select the tone that the phone sounds when you open or close the phone.

### Power on/off *(Menu 4.7)*

---

Use this menu to select the melody that the phone sounds when it is switched on or off.

### Alert on call *(Menu 4.8)*

---

Use this menu to set the phone to beep when you receive a new message or when the time for an alarm comes during a call.

## Extra tones *(Menu 4.9)*

---

Use this menu to customise additional tones for the phone.

- **Error tone:** set the phone to beep when you have made a mistake or something wrong happens on the phone.
- **Minute minder:** set the phone to beep every minute during an outgoing call to keep you informed of the length of your call.
- **Connect tone:** set the phone to beep when an outgoing call is connected to the system.

## Messages *(Menu 5)*

Use the **Messages** menu to send and receive short messages and multimedia messages. You can also access push message, voicemail, SOS messages and broadcast message features.

To access this menu, press <**Menu**> in Idle mode and select **Messages**.

## Text messages *(Menu 5.1)*

---

Short Message Service (SMS) allows you to send or receive text messages including simple pictures, melodies, and animated images.

### Create *(Menu 5.1.1)*

You can create and send a text message.

1. Enter your message.



The maximum number of characters allowed in a short message varies by service provider. If your message exceeds the maximum number of characters, the phone will split the message.

2. Press <**Options**> to access the following options for creating a message:
  - **Add content:** add a sound, melody, picture, or animated image to the message.
  - **Add templates:** add a text template.

- **Add emoticon:** add an emoticon.
  - **Add from phonebook:** add a Phonebook entry.
  - **Add from bookmarks:** add a bookmark item.
3. Press **<Options>** and select **Save and send** or **Send only**.
  4. If you select **Save and send**, select a memory location.
  5. Enter a destination number.
  6. Press **<Options>** and select **Send message** to send the message.

### Inbox (Menu 5.1.2)

This folder stores SMS messages you have received.

While viewing a message, press **<Options>** to access the following options:

- **Delete:** delete the message.

- **Send:** forward the message to other people.
- **Text reply:** reply to the sender.
- **Call back:** call the sender.
- **Cut address:** extract URLs, e-mail addresses, or phone numbers from the message.
- **Move to phone/Move to SIM:** move the message between the SIM card and the phone's memory.
- **Select content:** save media content from the message into your phone's memory.

### Outbox (Menu 5.1.3)

This folder stores SMS messages you have sent or have saved to send at a later time.

While viewing a message, press **<Options>** to access the following options:

- **Delete:** delete the message.
- **Send:** send or resend the message.

- **Cut address:** extract URL addresses, e-mail addresses, or phone numbers from the message.
- **Move to phone/Move to SIM:** move the message between the SIM card and the phone's memory.
- **Select content:** save media content from the message into your phone's memory.

### **Templates** (Menu 5.1.4)

Your phone provides you with preset sentences so that you can retrieve and insert them when composing an SMS message. Use this menu to create templates with the sentences you use frequently.

#### **Creating a template**

1. Select the template you want to change.
2. Select **Edit**.
3. Enter a new sentence and press <**OK**>.

### **Using template options**

From the template list, press <**Options**> to access the following options:

- **Edit:** edit the selected template.
- **Send:** create and send a new message.
- **Delete:** delete the selected template.

### **Emoticon templates** (Menu 5.1.5)

You can access preset emoticon templates or create emoticon templates so that you can retrieve them when composing a message.

#### **Creating a template**

1. Select a category.
2. Press <**Options**> and select **Add**.
3. Enter an emoticon and press <**Save**>.

### Using template options

From the emoticon list, press <**Options**> to access the following options:

- **Add:** add a new emoticon.
- **Edit:** edit the selected emoticon.
- **Send:** send a message using the emoticon.
- **Delete:** delete the emoticon.

### Settings (Menu 5.1.6)

Use this menu to customise SMS settings.



The setting options available in this menu may vary depending on your service provider.

- **Setting x** (where **x** is the setting group number): set the properties of each setting group. The setting group accessed last is activated for sending or receiving subsequent messages.

**Service center:** store or changes the number of your SMS server.

**Default destination:** enter a default destination number.

**Default type:** set the default message type. The network can convert the messages into the selected format.

**Validity period:** set the length of time your messages are stored in the SMS server.

**Setting name:** enter a setting group name.

- **Common settings:** The following options are available:

**Reply path:** allow recipients to reply to you through your SMS server.

**Delivery reports:** set the network to inform you when your messages have been delivered.

**Bearer selection:** select either **GSM** or **GPRS preferred**, depending on your network.



## Multimedia messages *(Menu 5.2)*

---

Multimedia Message Service (MMS) delivers messages containing a combination of text, an image, and an audio, from phone to phone or from phone to e-mail.








### Create *(Menu 5.2.1)*

You can create and send an MMS message.

1. Enter a message subject and press **<Next>**.
2. Press **<Options>** and add message contents using one of the following options:
  - **Add text:** add message text.
  - **Add photo:** add a photo taken by the camera on the phone.
  - **Add picture:** add a downloaded picture.
  - **Add sound:** add a voice memo or downloaded sound.
3. To change the added items, highlight one and press **<Options>** to access the following options for changing the message or message settings:
  - **Edit text/Edit picture/Edit sound:** edit the text, or replace the added photo, picture, or sound.
  - **Delete:** remove an added item.
  - **Duration:** set how long one page displays. After the specified time, the display automatically scrolls to the next page.
  - **Settings:** change the message settings.
    - ▶ p. 50
  - **Preview:** view the message you created.
4. When you have finished, press **<Options>** and select **Send** from the options.
5. Enter a destination number or an e-mail address.
6. Press **<Options>** and select **Send**.

### Inbox (Menu 5.2.2)

This folder stores MMS messages that you have received. The following icons tell you the message status:

-  notification that you have read
-  notification that you have not read
-  you are retrieving from the server
-  the server is processing your request
-  the server has failed to send
-  you have read
-  you have not read

While viewing a message, press <**Options**> to access the following message options:

#### Notifications

- **Retrieve:** retrieve the message from the MMS server.
- **Delete:** delete the message.





- **More properties:** access the message's detailed properties.

#### Retrieved messages

- **Delete:** delete the message.
- **Reply:** reply to the sender.
- **Callback:** call the sender.
- **Cut address:** extract URLs, e-mail addresses, or phone numbers from the message.
- **Forward:** forward the message to other people.
- **Save picture:** save an image from the message into the **Images** folder.
- **Save sound:** save a sound from the message into the **Sounds** folder.
- **Properties:** access the message properties.

### Outbox (Menu 5.2.3)

This folder stores MMS messages that you have sent or the phone is attempting to send. The following icons tell you the message status:

-  currently being sent
-  sent
-  not sent
-  to be sent

While viewing a message, press <**Options**> to access the following options:

- **Delete:** delete the message.
- **Cut address:** extract URL addresses, e-mail addresses, or phone numbers from the message.
- **Send:** send the message.
- **Edit:** edit the message.
- **Properties:** access the message properties.

### Draft (Menu 5.2.4)

This folder stores messages you have saved to send at a later time.

You can view a message and use the options the same as in the Outbox.

### Templates (Menu 5.2.5)

This folder stores messages you have saved as templates while composing so that you can use them for creating new messages.

While viewing a template, press <**OK**> to access the following options:

- **Edit:** send the message using the template.
- **Delete:** delete the template.

### Settings (Menu 5.2.6)

You can customise the settings for sending and receiving MMS messages.

- **Delivery report:** set the network to inform you when your messages have been delivered.
- **Read reply:** send a read-reply request along with your messages.
- **Auto download:** set whether or not your phone retrieves new incoming messages from the MMS server without notifications.
- **Message acceptance:** select the category of messages you want to receive.
- **Hide ID:** set your address to be hidden from the recipient's phone.
- **Validity period:** set the length of time your messages are stored in the MMS server.

- **Delivery time:** set the time delay before messages are sent.
- **Priority:** set the priority level of messages.
- **Report allowed:** set the network to inform the senders when messages are delivered to you.
- **Page duration:** set how long one page in your outgoing messages displays. After a specified time, the display automatically scrolls to the next page.

### MMS profile (Menu 5.2.7)

You can configure required network settings for MMS. The profile accessed last is automatically activated for sending or receiving subsequent messages.



Check with your service provider before you change any MMS settings on your phone.

For each profile, set the following options:

- **Profile name:** assign a name to the profile.
- **Connection URL:** enter the address of your MMS server.
- **Security:** select a security mode for data transmission.
- **IP address:** enter the IP address of the proxy server.
- **User name:** enter the user ID.
- **Password:** enter the password.
- **APN:** enter the access point name used for the address of the MMS server.

### **Push messages** *(Menu 5.3)*

---

Use this menu to access messages from wireless web servers.

- **Inbox:** access push messages you have received.

- **Receive:** determine whether or not your phone receives push messages.
- **Delete all:** delete all push messages.

### **Delete all** *(Menu 5.4)*

---

Use this menu to delete all of the messages in each message folder.

1. Select a message type.
2. Press [**OK/i**] to select the message folders to be cleared.
3. Press <**Delete**>.
4. Press <**Yes**> twice to confirm the deletion.

### Voice mail *(Menu 5.5)*

---

Use this menu to store the number of the voicemail server and access your voicemails.



You must store the voicemail server number before accessing the server. Your service provider can give you the number.

- **Connect to voice server:** connect to the voicemail server to listen to your messages.
- **Voice server number:** change the voicemail server number.

### SOS messages *(Menu 5.6)*

---



In an emergency, you can send an SOS message to your family or friends for help. You can also receive an SOS message from other people who are in an emergency. Use this menu to specify options for sending and receiving an SOS message.

### Sending options *(Menu 5.6.1)*

You can set up the options for sending SOS messages.

- **Sending SOS:** activate or deactivate the SOS message feature. To send an SOS message, press [Volume] 4 times in Idle mode.



While the phone is attempting to send an SOS message,  turns to red and you cannot access menu functions in this mode. To use the phone as normal, press [] when the icon turns to blue.

- **Recipients:** specify the phone numbers to which you want to send an SOS message.
- **Repeat:** set the number of times the phone resends the SOS message.
- **Message:** check the preset SOS message text.
- **Help:** view the onscreen help.

### Receiving options *(Menu 5.6.2)*

You can set whether or not the phone uses the preset alert type (siren and alert message) for incoming SOS messages. If you select **Normal**, the phone uses the message ringer setting.

### Broadcast messages *(Menu 5.7)*

---

Your phone receives broadcast messages, which are text messages related to various topics, such as weather forecast, traffic, and news report, from networks. Use this menu to access received broadcast messages.

- **Read:** open received broadcast messages. The **Volatile** box saves messages until the phone is switched off. The **Archive** box saves messages indefinitely. Press <**Options**> and select **Save** when a text notification appears or while viewing a broadcast message in the

**Volatile** box. The message is saved in the **Archive** box.

- **Receive:** enable or disable the reception of broadcast messages.
- **Channel list:** indicates the channels from which you receive broadcast messages. Please contact your service provider for further details.
- **Language:** select the preferred languages in which broadcast messages display.

### Memory status *(Menu 5.8)*

---

Use this menu to check the number of SMS messages or the amount of memory currently in use for storing MMS messages.

### Funbox *(Menu 6)*

The **Funbox** menu allows you to use the web browser, play Java games, and access images and sounds stored in the phone's memory.

To access this menu, press <**Menu**> in Idle mode and select **Funbox**.

### WAP browser *(Menu 6.1)*

The Wireless Application Protocol (WAP) browser on your phone allows you to access the wireless web. From the wireless web, you can access up-to-date information and a wide variety of media content, such as games, wallpapers, and ringtones.

### Home *(Menu 6.1.1)*

Use this menu to connect your phone to the network and load the homepage of the wireless web service provider.

### Navigating the web browser

To	Press
scroll through browser items	[Up] or [Down].
select a browser item	[OK/ <i>i</i> ].
return to the previous page	[C].
access bookmarks	and hold [#]

### Using page options


From any web page, press and hold [**\***] to access the following browser options:

- **Reload:** reload the current page.
- **Home:** go back to the homepage.
- **Go to URL:** enter a URL address manually.
- **Show URL:** view the URL address of the current web page.



- **Edit home:** edit the URL address and title of the homepage.
- **Clear cache:** delete information stored in the cache. A cache is a temporary memory that stores recently accessed web pages.
- **Inbox:** read messages received from a web server.

### Exiting the web browser

Press [  ] to end the network connection and exit the browser.

### Bookmarks *(Menu 6.1.2)*

Use this menu to save URL addresses in order to quickly access web pages.

#### Adding a bookmark

1. Select an empty location.
2. Enter a URL address and press <**Enter**>.
3. Enter a title for the bookmark and press <**Enter**>.

### Using bookmark options

After saving an item, press <**Options**> to access the following options:

- **Go to URL:** access the bookmarked web page.
- **Edit:** edit the URL address and title of the bookmark.
- **Delete:** delete the bookmark.

### http:// *(Menu 6.1.3)*

Use this menu to manually enter the URL address and access the associated web page.

### WAP profiles *(Menu 6.1.4)*

Use this menu to set up connection profiles to be used for accessing the wireless web. You can also create or edit a profile.

For each server, set the following options:

- **Profile name:** enter a profile name.

- **Homepage URL:** enter the URL address of the page to be used as your homepage.
- **Security:** select a security mode.
- **Bearer:** select a network bearer type; **GPRS** or **Data**. The remaining options depend on the bearer setting.

*When the bearer is set to **GPRS**:*

- **IP address:** enter the IP address of the proxy server.
- **User name:** enter the user ID.
- **Password:** enter the password.
- **APN:** enter the access point name.

*When the bearer is set to **Data**:*

- **IP address:** enter the IP address of the proxy server.
- **Login name:** enter the login ID.

- **Password:** enter the login password.
- **Dial-up number:** enter the PPP phone number.
- **Data call type:** select a call type for data transmission.

### **Clear cache** (Menu 6.1.5)

Use this menu to clear the cache, which is the temporary memory that stores the web pages you have recently accessed.

### **Fun club** (Menu 6.2)

---

Use this menu to access Samsung Fun Club, the preset web site providing Samsung mobile phone users with attractive download services of updated ringtones and wallpapers.

### **SFC home** (Menu 6.2.1)

Selecting this menu loads the Samsung Fun Club homepage.

For further details about this service, contact your service provider.

### **Service area** (Menu 6.2.2)

Each time you go to Hong Kong or China, you need to change this setting to use the SFC service, according to the area where you are. You can choose either **China** or **China HK**.

### **Games** (Menu 6.3)

---

Use this menu to access and play Java games.

### **Playing a game**

Select a game from the game list and follow the onscreen instructions. The procedure may differ from game to game.

### **Viewing game information**

Scroll to the game you want and press <**Info**>.

### **Sounds** (Menu 6.4)

---

Use this menu to access sounds downloaded from the wireless web or received in messages.

While reviewing a sound, press <**Options**> to access the following options:

- **Rename**: change the file name.
- **Delete**: delete the file.
- **Set as ringtone**: set the sound as your ringtone.

### Images (Menu 6.5)

---

Use this menu to access images downloaded from the wireless web or received in messages.

While reviewing an image, press <**Options**> to access the following options:

- **Rename**: change the file name.
- **Delete**: delete the file.
- **Set as wallpaper**: set the image as wallpaper for the idle screen.

### Delete all (Menu 6.6)

---

Use this menu to delete all of the downloaded items in the **Games**, **Sounds**, and **Images** folders.

1. Press [**OK/i**] to select the folders to be cleared.
2. Press <**Delete**>.
3. Press <**Yes**> twice to confirm the deletion.

### Memory status (Menu 6.7)

---

Use this menu to check the amount of memory currently in use in each media folder.

### Organizer (Menu 7)

The **Organizer** menu enables you to keep track of your schedule and tasks. You can also set the time and date and use convenient features, such as alarm timer, voice recorder, calculator, and currency converter.

To access this menu, press <**Menu**> in Idle mode and select **Organizer**.

### Alarm (Menu 7.1)

---

Use this menu to set alarms to sound at a specific time.

## Setting an alarm

1. Select the type of alarm.
2. Enter the time for the alarm to sound.  
To change the alarm melody, press **<Options>** and select **Alarm sound set**.
3. Select **AM** or **PM** in 12-hour time format.
4. If you selected **Morning call** in step 1, choose **Monday to friday** or **Monday to saturday**.
5. Press [**OK/i**] to save the alarm.

## Stopping an alarm

When the alarm sounds, press any key.

## Deactivating an alarm

When you do not need an alarm any longer, you can deactivate it.

- To deactivate an alarm, access it, press **<Options>**, and select **Remove alarm**.

- To deactivate all alarms, select **Remove alarm** from the **Alarm** menu.

## Setting alarms to sound when the phone is off

From the Alarm screen, select **Autopower** → **Enable**.

If the phone is off when it is time for the alarm to sound, the phone switches on and sounds the alarm.

## Calendar *(Menu 7.2)*

---

Use this menu to write memos on your schedule or set alarms to act as a reminder.

When you select the **Calendar** menu, the calendar in Month view appears with today's date highlighted.

### Selecting a day

- Press [Left] or [Right] to move by day.
- Press [Up] or [Down] to move by week.
- Press [Volume] to move by month.

### Using calendar options

From the calendar, press <**Options**> to access the following options:

- **Search all:** view all of the memos you have created.
- **Delete all:** delete all memos.
- **Go to date:** go to a specific date.
- **Exit:** exit the **Calendar** menu.

### Entering a new memo

1. Select a date on the calendar.
2. Enter your memo and press <**OK**>.

3. Press [**OK/i**] to set an alarm to sound on the chosen day. Otherwise, press <**Skip**>.

4. Enter the time for the alarm and press [**OK/i**].

You can select an alarm melody by pressing <**Melody**>.

5. Select **AM** or **PM** in 12-hour time format. The colour of the date on the calendar changes to pink to indicate that a memo exists for that date.

### Viewing a memo

1. Select a date on the calendar. If more than one memo exists, they will display in order of their alarm times.
2. Press [Up] or [Down] to scroll through the memos stored for that day.

## Using memo options

While viewing a memo, press <**Options**> to access the following options:

- **New**: add a new memo.
- **Edit**: edit the memo.
- **Alarm**: set an alarm for the memo.
- **Delete**: delete the memo.
- **Copy to**: copy the memo to another date.
- **Move to**: change the date of the memo.

## Time & date *(Menu 7.3)*

---

Use this menu to change the time and date displayed on your phone. Before setting the time and date, specify your time zone in **World time**.

- **Set time**: enter the current time.

- **Set date**: enter the current date.
- **World time**: set your local time zone and find out the current time in another part of the world.
- **Time format**: select a time format.
- **Date format**: select a date format.
- **Auto update**: activate the auto time update feature. Your phone will read the MCC (Mobile Country Code) from the network and automatically update the current time for the country that you are in when you travel abroad.



Time information may not be updated when you move to one time zone to another within a country.

### Calculator (Menu 7.4)

---

Use this menu to perform basic arithmetic functions such as addition, subtraction, multiplication, and division.

1. Enter the first number.
  - Press **<.0>** to insert a decimal point or bracket.
  - Press **[\*]** or **[#]** to move the cursor.
2. Press one of the Navigation keys to access the math function you want.
3. Enter the second number.
4. Press **[OK/i]** to view the result.
5. If necessary, repeat from step 2 to continue the calculation.

### To do list (Menu 7.5)




---


Use this menu to create tasks and manage them.

### Creating a task

1. Press **<New>**.
2. Enter the first task and press **<OK>**.
3. Select a priority level.
4. Enter the deadline for the task and press **[OK/i]**. Otherwise, press **<Skip>**.

### Viewing a task

When you select the **To do list** menu, the tasks display with a check mark, if the task has been done, and a priority level indicator;  for High,  for Normal, and  for Low.

 To change the status of a specific task, press **[\*]**.

### Using task options

While viewing a task, press **<Options>** to access the following options:

- **New:** add a new task.
- **Mark:** change the status of the task.



- **Edit:** edit the task.
- **Sort:** sort the To do list by tasks' priority or status.
- **Copy:** copy the task.
- **Copy to calendar:** copy the task to the calendar as a memo.
- **Delete:** delete the task.
- **Delete all:** delete all tasks.
- **Exit:** exit the **To do list** menu.

### **Voice memo** *(Menu 7.6)*

---

Use this menu to record and play voice memos.

#### **Record voice** *(Menu 7.6.1)*

You can record a voice memo of up to 30 seconds.

1. Press **<Record>** to start recording.
2. Speak into the microphone.

3. When you have finished, press **<Stop>**.  
The following options display:
  - **Replay:** play back the memo.
  - **Re-record:** discard the memo and record another one.
  - **Save:** save the memo.
  - **Quit:** cancel your recording and exit the **Record voice** menu.
4. Select **Save** to save the voice memo.
5. Enter a name of the voice memo and press **<OK>**.

#### **Voice list** *(Menu 7.6.2)*

Use this menu to access voice memos you have recorded.

From the memo list, press **<Options>** to access the following options:

- **Play:** play the selected voice memo.

- **Send:** send the voice memo as part of an MMS message.
- **Rename:** change the file name.
- **Properties:** access the file properties.
- **Delete:** delete the file.

### Delete all (Menu 7.6.3)

Use this menu to delete all of the voice memos you have recorded at one time.

### Memory status (Menu 7.6.4)

You can check the amount of memory currently in use for storing voice memos, and the number of voice memos.

### Currency exchange (Menu 7.7)

---

Use this menu to do currency conversions.


1. Enter the rate of foreign currency and press **<OK>**.

Press [**#**] to insert a decimal point.

2. Enter the amount of the source currency you want to convert and press **<OK>**.  
The amount you entered and its equivalent value in the foreign currency display.

## Camera (Menu 8)

You can use the camera module embedded in your phone to take photos.

To access this menu, press **<Menu>** in Idle mode and select **Camera**, or press [.




- Do not take photos of people without their permission.
- Do not take photos in a place where cameras are not allowed.
- Do not take photos in a place where you may interfere with another person's privacy.

## Take photos (Menu 8.1)


Use this menu to take a photo. The camera produces jpeg photos.

- ☒ When you take a photo in direct sunlight or in bright conditions, shadows may appear on the photo.


### Taking a photo

1. Access the **Take photos** menu or press and hold [Up] to turn on the camera.
2. Make any desired adjustments.
  - Press <  > to use the camera options. ► next section
  - Use the keypad to change the camera settings. ► p. 66
3. Press [**OK/i**] to take a photo.

4. Press <**Save**>. The photo is saved in the **My photos** folder.

To	Press
use photo options	< <b>Options</b> >. ► p. 67
return to Capture mode	<  > or [ <b>C</b> ].

### Using camera options in Capture mode

In Capture mode, press <  > to access the following options:

- **Effects:** change the colour tone or apply a special effect to the photo.
- **Frames:** apply a decorative frame.
- **Mode:** take a photo in the following modes:  
**Normal shot:** take a photo in Normal mode.

**Multi shot:** take a series of action stills. You can select the shooting speed and the number of photos the camera will take.

**Mosaic shot:** take several stills and save them in one frame. You can select the layout and the shutter mode.

- **Rotation:** view the mirror image, flip the image vertically, or do both at the same time.
- **Self timer:** set a time delay before the camera takes a photo.
- **Settings:** change the default settings for taking a photo.  
**Photo size:** select an image size.  
**Photo quality:** select an image quality setting.
- **Help:** access the functions of the keys you can use in Capture mode.

## Using the keypad in Capture mode

You can use the keypad to customise your camera settings in Capture mode.

Keys	Function
Left/Right	Adjusts the brightness of the image.
Up/Down	Zooms in or out.
Volume up	Flips the image vertically.
Volume down	Shows the mirror image.
2	Changes the image size.
3	Changes the image quality.
4	Changes the shooting mode.
5	Changes the colour tone or applies a special effect.

Keys	Function
<b>6</b>	Reduces the distortion on the image to maximize detail and sharpness.
<b>7</b>	Selects a decorative frame.
<b>8</b>	Sets the timer.
<b>9</b>	Goes to the <b>My photos</b> folder.
<b>*</b>	Changes the preview screen.

### Using photo options

After saving a photo, press <**Options**> to access the following options:

- **Send**: send the photo via MMS.
- **Rename**: change the file name.
- **Set as wallpaper**: set the photo as wallpaper for the idle screen.

- **Set as caller ID**: set the photo as a caller ID image for a Phonebook entry.
- **Protection**: lock the file to protect it from being deleted, or unlock the file.
- **Delete**: delete the file.
- **Delete all**: delete all files.
- **Properties**: access the file properties.

### My photos (Menu 8.2)

Use this menu to access photos you have taken.

### Viewing photos

1. Select the thumbnail of the photo you want.
2. Press the Navigation keys to scroll through photos.

### Using photos options

While viewing a photo, press <**Options**> to access the following options:

- **Send:** send the photo via MMS.
- **Rename:** change the file name.
- **Set as wallpaper:** set the photo as wallpaper for the idle screen.
- **Set as caller ID:** set the photo as a caller ID image for a Phonebook entry.
- **Protection:** lock the file to protect it from being deleted, or unlock the file.
- **Delete:** delete the file.
- **Delete all:** delete all files.
- **Properties:** access the file properties.

### **Memory status** *(Menu 8.3)*

---

Use this menu to check the amount of memory currently in use in the camera.

### **Phone settings** *(Menu 9)*

The **Phone settings** menu provides you with various setting options to customise the phone to your preferences and needs. You can also reset the settings to their default status.

To access this menu, press **<Menu>** in Idle mode and select **Phone settings**.

### **Display settings** *(Menu 9.1)*

---

Use this menu to change settings for the display and light.

#### **Wallpaper** *(Menu 9.1.1)*

You can change the background image and the settings for text to be displayed in Idle mode.

- **Wallpaper list:** select a background image.
- **Text display:** determine whether or not the phone displays text.
- **Text color:** select a font color.

**Back light** *(Menu 9.1.2)*

You can select the length of time the backlight or display stays on.

- **Back light On:** select the length of time the backlight stays on.
- **Back light Dim:** select the length of time the display stays on in Dim mode after the backlight turns off. After a specified time, the display turns off.

**LCD Brightness** *(Menu 9.1.3)*

You can adjust the brightness of the display for varying lighting conditions.

**LCD Contrast** *(Menu 9.1.4)*

You can adjust the contrast of the display colour. Adjust this setting with the display brightness to see the display clearly in different lighting condition.

**Graphic logo** *(Menu 9.1.5)*

You can set the phone to display a graphic icon instead of the service provider's logo on the idle screen. This is only available if a graphic icon has been received in a message.

**Dialing font color** *(Menu 9.1.6)*

Use this menu to select a font colour for the numbers entered while dialling.

**Greeting message** *(Menu 9.2)*

---

Use this menu to enter the greeting that is displayed briefly when the phone is switched on.

### **Own number** (Menu 9.3)

---

Use this feature to check your phone numbers, or to assign a name to each of the numbers. Changes made here do not affect the actual subscriber numbers on your SIM card.

### **Language** (Menu 9.4)

---

Use this menu to select a language for the display text.

### **Security** (Menu 9.5)

---

Use this menu to protect the phone against unauthorised use by managing the several access codes of your phone and SIM card.



If you enter an incorrect PIN/PIN2 three times, the SIM card is blocked. To unblock it, you need to enter your PUK/PUK2 (Personal Unblocking Key). The codes are supplied by your service provider.

### **PIN check** (Menu 9.5.1)

The 4- to 8-digit PIN (Personal Identification Number) protects your SIM card against unauthorised use. When this feature is enabled, the phone requires your PIN each time it is switched on.

### **Change PIN** (Menu 9.5.2)

Use this menu to change your PIN. The PIN check feature must be enabled to change the PIN.

### **Phone lock** (Menu 9.5.3)

Use this menu to lock the phone from unauthorised use. When this feature is enabled, you must enter a 4- to 8-digit phone password each time the phone is switched on.

The password is preset to **00000000**. To change the password, use the **Change password** menu.



**Change password** (Menu 9.5.4)

Use this menu to change your phone password.

**Privacy** (Menu 9.5.5)

Use this menu to lock your media contents, including MMS messages, photos, voice memos, images, and sounds.

1. Press [**OK/***i*] to select the items to be locked.
2. Press <**OK**> to lock the marked items.
3. Enter the phone password and press <**OK**>.

To access a locked item, you need to enter the phone password.

**SIM lock** (Menu 9.5.6)

This menu allows your phone to work only with the current SIM card by assigning a SIM lock code. You must enter the SIM lock code to use a different SIM card.

**FDN mode** (Menu 9.5.7)

If supported by your SIM card, Fixed Dialling Number (FDN) mode restricts your outgoing calls to a limited set of phone numbers. When this feature is enabled, you can make calls only to phone numbers stored on the SIM card.


**Change PIN2** (Menu 9.5.8)

If supported by your SIM card, use this menu to change your current PIN2.

**Extra settings** (Menu 9.6)

You can turn the automatic redialling or answering features on or off.

- **Auto redial:** make up to ten attempts to redial a phone number after an unsuccessful call.
- **Active folder:** answer an incoming call simply by opening the phone.

- **Anykey answer:** answer an incoming call by pressing any key, except [  ], [Volume] and <**Reject**>.

### Side key *(Menu 9.7)*

---

Use this menu to set whether the phone mutes the call ringer or rejects a call if you press and hold [Volume] when a call comes in.

### Short cut *(Menu 9.8)*

---

You can use the Navigation keys as shortcut keys to access specific menus directly from Idle mode. Use this menu to change the shortcut assignments for [Down], [Left], or [Right].

1. Select the key to be used as a shortcut key.
2. Select the menu to be assigned to the key.

### Reset settings *(Menu 9.9)*

---

Use this menu to reset the phone to its default settings.

Enter the 4- to 8-digit phone password and press <**OK**>.



The password is preset to **00000000**. You can change this password. ► p. 71

## *Solve problems*

### *Help and personal needs*

To save the time and expense of an unnecessary service call, perform the simple checks in this section before contacting a service professional.

### **When you switch on your phone, the following messages may appear:**

#### **"Insert SIM card"**

- Be sure that the SIM card is correctly installed.

#### **"Phone locked Enter password"**

- The automatic locking function has been enabled. You must enter the phone's password before you can use the phone.

#### **"Enter PIN"**

- You are using your phone for the first time. You must enter the PIN supplied with the SIM card.
- The PIN Check feature is enabled. Every time the phone is switched on, the PIN has to be entered. To disable this feature, use the **PIN check** menu.

#### **"Enter PUK"**


- The PIN code has been entered incorrectly three times, and the SIM card is now blocked. Enter the PUK supplied by your service provider.

#### **"No service," "Network failure," or "Not done" displays**


- The network connection has been lost. You may be in a weak signal area. Move and try again.

- You are trying to access an option for which you have no subscription with your service provider. Contact the service provider for further details.

**You have entered a number but it was not dialed**

- Be sure that you have pressed [.
- Be sure that you have accessed the right cellular network.
- Be sure that you have not set an outgoing call barring option.

**Your correspondent cannot reach you**

- Be sure that your phone is switched on. ([] pressed for more than one second.)
- Be sure that you are accessing the right cellular network.
- Be sure that you have not set an incoming call barring option.


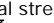

**Your correspondent cannot hear you speaking**

- Be sure that you have switched off the microphone.
- Be sure that you are holding the phone close enough to your mouth. The microphone is located at the bottom of the phone.

**The phone starts beeping and “Warning Low battery” flashes on the display**

- Your battery is insufficiently charged. Recharge the battery.

**The audio quality of the call is poor**

- Check the signal strength indicator on the display (). The number of bars indicates the signal strength from strong () to weak ().
- Try moving the phone slightly or moving closer to a window if you are in a building.

**No number is dialed when you re-call a Phonebook entry**

- Use the **Search** menu to ensure the number has been stored correctly.
- Re-store the number, if necessary.

**The battery does not charge properly or the phone sometimes turns itself off**

- Wipe the charging contacts both on the phone and on the battery with a clean soft cloth.

**If the above guidelines do not help you to solve the problem, take note of:**

- The model and serial numbers of your phone
- Your warranty details
- A clear description of the problem

Then contact your local dealer or Samsung after-sales service.

## *Health and safety information*

### **SAR certification information**

---

This phone meets European Union (EU) requirements concerning exposure to radio waves.

Your mobile phone is a radio transmitter and receiver. It is designed and manufactured to not exceed the limits for exposure to radio-frequency (RF) energy, as recommended by the EU Council. These limits are part of comprehensive guidelines and establish permitted levels of RF energy for the general population. The guidelines were developed by independent scientific organisations through the periodic and thorough evaluation of scientific studies. The limits include a substantial safety margin designed to ensure the safety of all persons, regardless of age and health.

The exposure standard for mobile phones employs a unit of measurement known as Specific Absorption Rate (SAR). The SAR limit recommended by the EU Council is 2.0W/kg.<sup>1</sup>

SAR tests are conducted using standard operating positions with the phone transmitting at its highest certified power level in all tested frequency bands. Although the SAR is determined at the highest certified power level, the actual SAR level of the phone while operating can be well below the maximum value. This is because the phone is designed to operate at multiple power levels so as to use only the power required to reach the network.

---

1. The SAR limit for mobile phones used by the public is 2.0 watts/kilogram (W/kg) averaged over ten grams of body tissue. The limit incorporates a substantial margin of safety to give additional protection for the public and to account for any variations in measurements. The SAR values may vary, depending on national reporting requirements and the network band.

In general, the closer you are to a base station, the lower the power output of the phone.

### **Precautions when using batteries**

---

- Never use a charger or battery that is damaged in any way.
- Use the battery only for its intended purpose.
- If you use the phone near the network's base station, it uses less power. Talk and standby time are greatly affected by the signal strength on the cellular network and the parameters set by the network operator.
- Battery charging time depends on the remaining battery charge, the type of battery, and the charger used. The battery can be charged and discharged hundreds of times, but it will gradually wear out. When the operation time is noticeably shorter than normal, it is time to buy a new battery.

- If left unused, a fully charged battery will discharge itself over time.
- Use only Samsung-approved batteries, and recharge your battery only with Samsung-approved chargers. Disconnect the charger from the power source when it is not in use. Do not leave the battery connected to a charger for more than a week, since overcharging may shorten its life.
- Extreme temperatures will affect the charging capacity of your battery: it may require cooling or warming first.
- Do not leave the battery in hot or cold places because the capacity and lifetime of the battery will be reduced. Try to keep the battery at room temperature. A phone with a hot or cold battery may not work temporarily, even when the battery is fully charged. Li-ion batteries are particularly affected by temperatures below 0°C (32°F).
- Do not short-circuit the battery. Accidental short-circuiting can occur when a metallic object like a coin, clip or pen causes a direct connection between the + and – terminals of the battery (metal strips on the battery). For example, do not carry a spare battery in a pocket or bag where the battery may contact metal objects. Short-circuiting the terminals may damage the battery or the object causing the short-circuiting.
- Dispose of used batteries in accordance with local regulations. Always recycle. Do not dispose of batteries in a fire.

## **Road safety**

---

Your wireless phone gives you the powerful ability to communicate by voice, almost anywhere, anytime. But an important responsibility accompanies the benefits of wireless phones, one that every user must uphold.

When driving a car, driving is your first responsibility. When using your wireless phone while driving, follow local regulations in the country or region you are in.

### **Operating environment**

---

Remember to follow any special regulations in force in the area you are in, and always switch off your phone whenever it is forbidden to use it, or when it may cause interference or danger.

When connecting the phone or any accessory to another device, read its user's guide for detailed safety instructions. Do not connect incompatible products.

As with other mobile radio transmitting equipment, users are advised that for the satisfactory operation of the equipment and for the safety of personnel, it is recommended that the equipment should only be used in the normal operating position (held to your ear with the antenna pointing over your shoulder).

### **Electronic devices**

---

Most modern electronic equipment is shielded from radio frequency (RF) signals. However, certain electronic equipment may not be shielded against the RF signals from your wireless phone. Consult the manufacturer to discuss alternatives.

### **Pacemakers**

Pacemaker manufacturers recommend that a minimum distance of 15 cm (6 inches) be maintained between a wireless phone and a pacemaker to avoid potential interference with the pacemaker. These recommendations are consistent with the independent research and recommendations of Wireless Technology Research. If you have any reason to suspect that interference is taking place, switch off your phone immediately.



## **Hearing aids**

Some digital wireless phones may interfere with some hearing aids. In the event of such interference, you may wish to consult your hearing aid manufacturer to discuss alternatives.

## **Other medical devices**

If you use any other personal medical devices, consult the manufacturer of your device to determine if it is adequately shielded from external RF energy.

Your physician may be able to assist you in obtaining this information.

Switch off your phone in health care facilities when regulations posted in these areas instruct you to do so.

## **Vehicles**

RF signals may affect improperly installed or inadequately shielded electronic systems in motor vehicles. Check with the manufacturer or its representative regarding your vehicle.

You should also consult the manufacturer of any equipment that has been added to your vehicle.

## **Posted facilities**

Switch off your phone in any facility where posted notices require you to do so.

## **Potentially explosive environments**

---

Switch off your phone when in any area with a potentially explosive atmosphere, and obey all signs and instructions. Sparks in such areas could cause an explosion or fire resulting in bodily injury or even death.

Users are advised to switch off the phone while at a refuelling point (service station). Users are reminded of the need to observe restrictions on the use of radio equipment in fuel depots (fuel storage and distribution areas), chemical plants, or where blasting operations are in progress.

Areas with a potentially explosive atmosphere are often but not always clearly marked. They include the areas below decks on boats, chemical transfer or storage facilities, vehicles using liquefied petroleum gas, such as propane or butane, areas where the air contains chemicals or particles, such as grain, dust or metal powders, and any other area where you would normally be advised to turn off your vehicle engine.

## **Emergency calls**

---

This phone, like any wireless phone, operates using radio signals, wireless, and landline networks as well as user-programmed functions, which cannot guarantee connection in all conditions. Therefore, you should never rely solely on any wireless phone for essential communications like medical emergencies.

To make or receive calls, the phone must be switched on and in a service area with adequate signal strength. Emergency calls may not be possible on all wireless phone networks or when certain network services and/or phone features are in use. Check with local service providers.

To make an emergency call:

1. Switch on the phone.
2. Key in the emergency number for your present location. Emergency numbers vary by location.

3. Press [  ].

Certain features like Call Barring may need to be deactivated before you can make an emergency call. Consult this document and your local cellular service provider.

### **Other important safety information**

---

- Only qualified personnel should service the phone or install the phone in a vehicle. Faulty installation or service may be dangerous and may invalidate any warranty applicable to the device.
- Check regularly that all wireless phone equipment in your vehicle is mounted and operating properly.
- Do not store or carry flammable liquids, gases, or explosive materials in the same compartment as the phone, its parts, or accessories.
- For vehicles equipped with an air bag, remember that an air bag inflates with great force. Do not place objects, including installed or portable wireless equipment, in the area over the air bag or in the air bag deployment area. Improperly installed wireless equipment could result in serious injury if the air bag inflates.
- Switch off your phone before boarding an aircraft. It is dangerous and illegal to use wireless phones in an aircraft because they can interfere with the operation of the aircraft.
- Failure to observe these instructions may lead to the suspension or denial of telephone services to the offender, or legal action, or both.

## **Care and maintenance**

---

Your phone is a product of superior design and craftsmanship and should be treated with care. The suggestions below will help you fulfill any warranty obligations and allow you to enjoy this product for many years.

- Keep the phone and all its parts and accessories out of the reach of small children and pets. They accidentally damage these things or choke on small parts.
- Keep the phone dry. Precipitation, humidity, and liquids contain minerals that corrode electronic circuits.
- Do not use the phone with a wet hand. Doing so may cause an electric shock to you or damage to the phone.
- Do not use or store the phone in dusty, dirty areas, as its moving parts may be damaged.
- Do not store the phone in hot areas. High temperatures can shorten the life of electronic devices, damage batteries, and warp or melt certain plastics.
- Do not store the phone in cold areas. When the phone warms up to its normal operating temperature, moisture can form inside the phone, which may damage the phone's electronic circuit boards.
- Do not drop, knock, or shake the phone. Rough handling can break internal circuit boards.
- Do not use harsh chemicals, cleaning solvents, or strong detergents to clean the phone. Wipe it with a soft cloth slightly dampened in a mild soap-and-water solution.
- Do not paint the phone. Paint can clog the device's moving parts and prevent proper operation.

- Do not put the phone in or on heating devices, such as a microwave oven, stove, or radiator. The phone may explode when overheated.
- When the phone or battery gets wet, the label indicating water damage inside the phone changes colour. In this case, phone repairs are no longer guaranteed by the manufacturer's warranty, even if the warranty for your phone has not expired.
- If your phone has a flash or light, do not use it too close to the eyes of people or animals. This may cause damage to their eyes.
- Use only the supplied or an approved replacement antenna. Unauthorised antennas or modified accessories may damage the phone and violate regulations governing radio devices.
- If the phone, battery, charger, or any accessory is not working properly, take it to your nearest qualified service facility. The personnel there will assist you, and if necessary, arrange for service.

- \* Depending on the software installed or your service provider or country, some of the descriptions in this guide may not match your phone exactly.
- \* Depending on your country, your phone and accessories may appear different from the illustrations in this guide.

**SAMSUNG ELECTRONICS**



World Wide Web  
<http://www.samsungmobile.com>

Printed in Korea  
Code No.: GH68-12677A  
English. 10/2006. Rev. 1.0