



SGH-D908

User's Guide





Important safety precautions



Failure to comply with the following precautions may be dangerous or illegal.

Drive safely at all times

Do not use a hand-held phone while driving. Park the vehicle first.

Switch off the phone when refuelling

Do not use the phone at a refuelling point (service station) or near fuels or chemicals.

Switch off in an aircraft

Wireless phones can cause interference. Using them in an aircraft is both illegal and dangerous.

Switch off the phone near all medical equipment

Hospitals or health care facilities may be using equipment that could be sensitive to external radio frequency energy. Follow any regulations or rules in force.

Interference

All wireless phones may be subject to interference, which could affect their performance.



Be aware of special regulations

Meet any special regulations in force in any area and always switch off your phone whenever it is forbidden to use it, or when it may cause interference or danger.


Water resistance

Your phone is not water-resistant. Keep it dry.

Sensible use

Use only in the normal position (held to the ear). Avoid unnecessary contact with the antenna when the phone is switched on.

Emergency call

Key in the emergency number for your present location, then press .

Keep your phone away from small children

Keep the phone and all its parts, including accessories, out of the reach of small children.

Accessories and batteries

Use only Samsung-approved batteries and accessories, such as headsets and PC data cables. Use of any unauthorised accessories could damage you or your phone and may be dangerous.

- The phone could explode if the battery is replaced with an incorrect type.
- Dispose of used batteries according to the manufacturer's instructions.



At very high volumes, prolonged listening to a headset can damage your hearing.

Qualified service



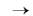
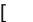

Only qualified service personnel may repair your phone.

For more detailed safety information, see "Health and safety information" on page 108.

About this Guide

This User's Guide provides you with condensed information about how to use your phone. To quickly learn the basics for your phone, please refer to "Get started" and "Step outside the phone."

In this guide, the following instruction icons appear:

-  Indicates that you need to pay careful attention to the subsequent information regarding safety or phone features.
-  Indicates that you can get more information on the referenced page.
-  Indicates that you need to press the Navigation keys to scroll to the specified option and then select it.
-  Indicates a key on the phone. For example, [↶]
-  Indicates a soft key, whose function is displayed on the phone screen. For example, <Menu>



- **Camera and camcorder**
Use the camera module on your phone to take a photo or record a video.

Special features of your phone



- **Music player**
Play music files using your phone as a music player.



- **File viewer**
Open documents in various formats on the phone without corruption.



- **Bluetooth**

Transfer media files and personal data and connect to other devices using free, wireless Bluetooth technology.



- **Offline mode**

Switch your phone to use its none-wireless functions in an airplane.



- **Phone to TV**

View photos and video clips captured with the phone on your TV screen.



- **Multimedia Message Service (MMS)**

Send and receive MMS messages with a combination of text, images, video, and audio.



- **E-mail**

Send and receive e-mails with images, video, and audio attachments.



- **Digital data printing**

Print images, messages, and other personal data directly from your phone.



- **Java**

Enjoy Java™-based embedded games and download new games.

Contents

Unpack 6

Make sure you have each item

Your phone 6

Keys, features, and locations

Get started 7

First steps to operating your phone

Install and charge the phone	7
Power on or off	8
Keys and display	9
Access menu functions	12
Customise your phone	13
Make/Answer calls	15

Step outside the phone 16

Begin with your camera, the music player, and other special features

Use the camera	16
Play music files	17

Browse the web	18
Use Phonebook	19
Send messages	20
View messages	21
Use Bluetooth wireless	22
Watch the phone display on a TV	23
Use a memory card	24

Enter text 26

Pinyin, Stroke, English word, ABC, Number, and Symbol modes

Call functions 31

Advanced calling features

Menu functions 35

All menu options listed

Solve problems 106

Help and personal needs

Health and safety information 108

Overview of menu functions

To access Menu mode, press **<Menu>** in Idle mode.

1 Call log	▶ p.35	3 Applications	▶ p.43	6 My files	▶ p.75	9 Settings	▶ p.94
1 Recent contacts	▶ p.35	1 Music player	▶ p.43	1 Images	▶ p.75	1 Time and date	▶ p.95
2 Missed calls	▶ p.36	2 Voice recorder	▶ p.46	2 Videos	▶ p.76	2 Phone settings	▶ p.95
3 Dialed calls	▶ p.36	3 Image editor	▶ p.47	3 Music	▶ p.77	3 Display settings	▶ p.98
4 Received calls	▶ p.36	4 Bluetooth	▶ p.49	4 Sounds	▶ p.77	4 Sound settings	▶ p.99
5 Delete all	▶ p.36	5 Java world	▶ p.51	5 Other files	▶ p.78	5 Light settings	▶ p.101
6 Area code	▶ p.36	6 SIM-AT ¹	▶ p.53	6 Memory card ²	▶ p.80	6 Network services	▶ p.101
7 Call time	▶ p.37			7 Memory status	▶ p.81	7 Security	▶ p.104
8 Call costs ¹	▶ p.37	4 Browser	▶ p.53			8 Memory status	▶ p.105
		1 Home	▶ p.53	7 Planner	▶ p.81	9 Reset settings	▶ p.105
2 Phonebook	▶ p.38	2 Fun club	▶ p.54	1 Alarm	▶ p.81		
1 Contact list	▶ p.38	3 Bookmarks	▶ p.54	2 Calendar	▶ p.82		
2 FDN contacts ¹	▶ p.39	4 Enter URL	▶ p.55	3 Memo	▶ p.85		
3 Create contact	▶ p.39	5 Clear cache	▶ p.55	4 World clock	▶ p.86		
4 Group	▶ p.40	6 Profile settings	▶ p.55	5 Calculator	▶ p.86		
5 Speed dial	▶ p.41	7 Current profile	▶ p.56	6 Converter	▶ p.87		
6 My namecard	▶ p.41			7 Timer	▶ p.87		
7 Own number	▶ p.42	5 Messages	▶ p.57	8 Stopwatch	▶ p.87		
8 Management	▶ p.42	1 Create new message	▶ p.57				
9 Service number ¹	▶ p.42	2 My messages	▶ p.61	8 Camera	▶ p.88		
		3 Templates	▶ p.66	1 Take a photo	▶ p.88		
		4 Delete all	▶ p.67	2 Record video	▶ p.92		
		5 Settings	▶ p.67	3 Go to My photos	▶ p.94		
		6 SOS message	▶ p.73	4 Go to My video clips	▶ p.94		
		7 Broadcast messages	▶ p.74				
		8 Memory status	▶ p.74				

1. Shows only if supported by your SIM card.

2. Shows only if a memory card is inserted into the phone.

Unpack

Make sure you have each item

- Phone
- Travel Adapter
- Battery
- User's Guide

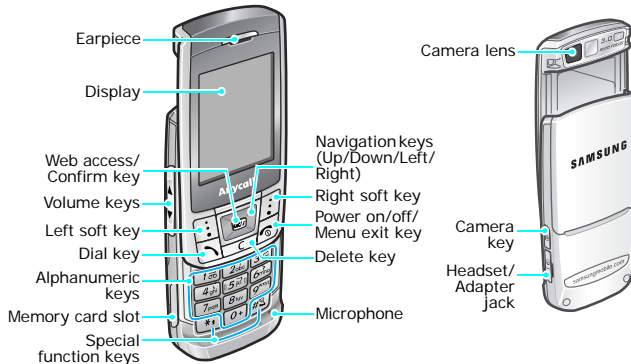
You can obtain various accessories from your local Samsung dealer.



- The items supplied with your phone and accessories available at your Samsung dealer may vary, depending on your country or service provider.
- Use the purchased accessories with only Samsung-authorized devices. The use of these accessories with other devices could cause problems and any repair costs would not be covered by the warranty.

Your phone

Keys, features, and locations



Get started

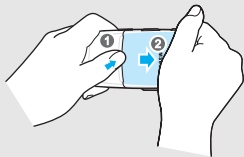
First steps to operating your phone

SIM card information

When you subscribe to a cellular network, you receive a plug-in SIM (Subscriber Identity Module) card loaded with your subscription details, such as your PIN, and available optional services.

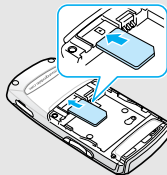
Install and charge the phone

- 1** Remove the battery cover.



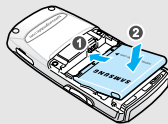
✓ If the phone is already on, first turn it off by pressing and holding [⏻].

- 2** Insert the SIM card.

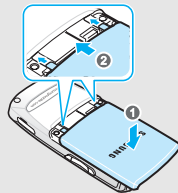


✓ Make sure that the gold-coloured contacts on the card are face down.

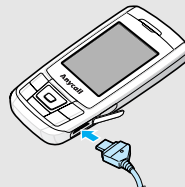
- 3** Install the battery.



- 4** Reattach the cover.



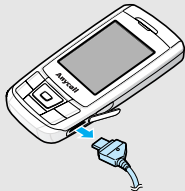
- 5** Plug the travel adapter into the phone.



- 6** Plug the adapter into a standard AC power outlet.


- 7 When the phone is completely charged (the battery icon becomes still), unplug the adapter from the power outlet.

- 8 Remove the adapter from the phone.



Low battery indicator

When the battery is low:


- a warning tone sounds,
- the battery low message displays, and
- the empty battery icon  blinks.

If the battery level becomes too low, the phone automatically turns off. Recharge your battery.

Power on or off

Switch on

1. Open the phone.

2. Press and hold [].

Do not turn on the phone when mobile phone use is prohibited.

3. If necessary, enter the PIN and press <OK>.

Switch off

1. Open the phone.

2. Press and hold [].

Keypad lock

When you close the phone, it locks the exposed keys to prevent accidental presses from affecting phone operations.

To unlock the keypad, press <**Unlock**> and press <**OK**>.

Offline mode

You can switch the phone to Offline mode, in which the phone functions requiring network connection are deactivated. This mode is helpful when you want to use your phone in a place where you are not allowed to use mobile devices, such as in an airplane and at a hospital.

To switch to Offline mode, press <**Menu**> and select **Settings** → **Phone settings** → **Offline mode** → **On**.

In Offline mode, you can use non-wireless functions, such as games, calendar, camera, and music player.

Keys and display

Keys



Perform the function indicated on the bottom line of the display.



In Idle mode, access menu options directly. ► p. 96
In Menu mode, scroll through menu options.



In Idle mode, launch the web browser.
In Menu mode, select the highlighted menu option or confirm input.



Make or answer a call.
In Idle mode, retrieve numbers recently dialed, missed, or received.



Delete characters from the display or items in an application.



Press and hold to switch the phone on or off.
End a call.
In Menu mode, cancel input and return the phone to Idle mode.



Enter numbers, letters, and some special characters.

In Idle mode, press and hold [1] to access your voicemail. Press and hold [0] to enter an international call prefix.



Enter special characters.

In Idle mode, press and hold [#] to activate or deactivate Silent mode. Press and hold [*] to enter a pause between numbers.



Adjust the phone volume.

In Idle mode, with the phone open, adjust the key tone volume. With the phone closed, press and hold to turn on the display.

In Menu mode, scroll through the menu options.



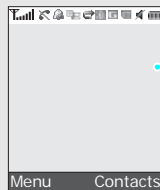
In Idle mode, access the **Camera** menu. Press and hold to turn on the camera.

In Camera mode, take a photo and record a video.

Display

Layout

The display has three areas.



Icons
displays various icons.

Text and graphics
displays messages, instructions, and information you enter.

Soft key function indicators
shows the current functions assigned to the two soft keys.

Icons¹



Received signal strength



Call in progress



Out of your service area; you cannot send or receive calls












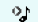
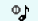

Alarm set ► p. 81




New text message








New voicemail


-  New multimedia message
-  New e-mail
-  One of the message Inboxes is full
-  Call diverting feature active
▶ p. 101
-  Bluetooth active ▶ p. 49
-  Synchronised with a PC
-  GPRS network
-  Home Zone, if registered for the appropriate service
-  Office Zone, if registered for the appropriate service
-  Music playback in progress
-  Music playback paused
-  Memory card inserted ▶ p. 24


 SOS message feature active
▶ p. 73

Ringer type ▶ p. 99

- None: Melody
-  : Vibration
-  : Melody and vibration
-  : Vibration then melody
-  : Melody then vibration

 Silent mode (Vibration)

 Silent mode (Mute)

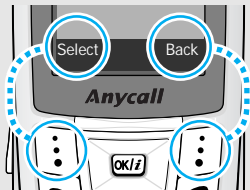
 Battery power level

1. Depending on your country or service provider, the icons shown on the display may vary.

Access menu functions

Use the soft keys

The roles of the soft keys vary depending on the function you are using. The bottom line of the display indicates their current role.



Press the left soft key to select the highlighted option.

Press the right soft key to return to the previous menu level.

Select an option

1. Press a desired soft key.
2. Press the Navigation keys to move to the next or previous option.
3. Press **<Select>** or [OK/⋮] to confirm the function displayed or option highlighted.
4. To exit, choose either of the following methods:
 - Press **<Back>** to move up one level.
 - Press [⏏] to return to Idle mode.

Use shortcuts

Press the number key corresponding to the option you want.

Customise your phone

Display language

1. In Idle mode, press <Menu> and select **Settings** → **Phone settings** → **Language** → **Display**.
2. Select a language.

Call ringer melody

1. In Idle mode, press <Menu> and select **Settings** → **Sound settings** → **Incoming call** → **Ring tone**.
2. Select a ringtone category.
3. Select a ringtone.
4. Press <Save>.

Idle mode Wallpaper

You can set wallpaper for the idle screen on the display.

1. In Idle mode, press <Menu> and select **Settings** → **Display settings** → **Wallpaper**.
2. When a wallpaper type is set to **Normal**, select **Wallpaper**.
3. Select an image category.
4. Select an image.
5. Press <Save>.

Menu style

You can change the display style of the main menu screen.

1. In Idle mode, press <Menu> and select **Settings** → **Display settings** → **Main menu style**.
2. Select the style you want.

Menu mode skin colour

You can change the colour for the display components, such as title bars and highlight bars.

1. In Idle mode, press **<Menu>** and select **Settings** → **Display settings** → **Skin**.
2. Select a colour pattern.

Menu shortcuts

You can set the Navigation keys to function as shortcuts to access your favourite menus.

1. In Idle mode, press **<Menu>** and select **Settings** → **Phone settings** → **Shortcuts**.
2. Select a key.
3. Select a menu to be assigned to the key.

My Menu

You can set up a menu for your own favourite menu items.

To set a My menu item:

1. In Idle mode, press **<Menu>** and select **Settings** → **Phone settings** → **My menu**.
2. Select an item.
3. Select a menu for the item.

To access a My menu item:

1. In Idle mode, press [Up].
2. Scroll to an item.
3. Press [OK/↓].

Silent mode

You can switch the phone to Silent mode to avoid disturbing other people.

Press and hold [#] in Idle mode.

Phone lock

You can protect the phone against unauthorised use with a phone password. The phone will require the password on power-up.

1. In Idle mode, press **<Menu>** and select **Settings** → **Security** → **Change password**.
2. Enter the default password, **00000000**, and press **<OK>**.
3. Enter a new 4- to 8-digit password and press **<OK>**.
4. Enter the new password again and press **<OK>**.
5. Select **Phone lock**.
6. Select **Enable**.
7. Enter the password and press **<OK>**.

Make/Answer calls

Make a call

1. Enter an area code and phone number.
2. Press [**↵**].
3. To end the call, press [**⏏**].

Answer a call

1. When the phone rings, press [**↵**].
2. To end the call, press [**⏏**].

Adjust the volume during a call




Press [**▲/▼**].

Step outside the phone

Begin with your camera, the music player, and other special features

Use the camera







Take a photo

1. In Idle mode, press and hold [] to turn on the camera.
2. Aim the lens at the subject and make any desired adjustments.
3. Press [**OK/**] or [] to take a photo. The photo is saved automatically.
4. Press < **Back** > to take another photo.

View a photo

1. In Idle mode, press < **Menu** > and select **My files** → **Images** → **My photos**.
2. Select the photo you want.

Record a video

1. In Idle mode, press and hold [] to turn on the camera.
2. Press [**1**] to switch to Record mode.
3. Press [**OK/**] or [] to start recording.
4. Press <  > or [] to stop recording. The video is automatically saved.
5. Press <  > to record another video.

Play a video

1. In Idle mode, press < **Menu** > and select **My files** → **Videos** → **My video clips**.
2. Select the video clip you want.

Play music files

Copy music files to the phone

Use these methods:

- Download from the wireless web ▶ p. 53
- Download from a computer using Samsung PC Studio
▶ Samsung PC Studio User's Guide
- Receive via Bluetooth ▶ p. 51
- Copy to a memory card and insert the card into the phone
▶ p. 24

Create a play list

1. In Idle mode, press <**Menu**> and select **Applications** → **Music player**.
2. Press <**Options**> and select **Add music from** → **Phone** or **Memory card**.
3. Press [**OK/Enter**] to select the files you want and press <**Add**>.

Play music files

1. From the music player screen, press [**OK/Enter**].
2. During playback, use the following keys:
 - **OK/Enter**: pauses or resumes playback.
 - **Up**: accesses the current album list.
 - **Left**: moves back to the previous file. Moves backward in a file when held down.
 - **Right**: skips to the next file. Skips forward in a file when held down.
 - **▲/▼**: adjusts the volume.
 - **Down**: stops playback.


Browse the web

Using a built-in web browser, you can easily access the wireless web to get a variety of up-to-date services and information and to download web content.

Launch the web browser

- In Idle mode, press [OK/⏏] and select **Home**.
- In Idle mode, press [OK/⏏] and select **Recent page** to access the web page you have last visited.

Navigate the web

- To scroll through browser items, press [Up] or [Down].
- To select an item, press <✓> or [OK/⏏].
- To return to the previous page, press <Back> or [C].
- To return to the homepage, press and hold [C].
- To access browser options, select  and press <✓>, or press [*].
- To access other phone menus, press [#].

Use Phonebook

Add a contact

To the phone's memory:

1. In Idle mode, enter a phone number and press [OK/↵].
2. Select **Phone** → **New** → a number type.
3. Specify the contact information: Last name, First name, Mobile, Home, Office, Fax, Other, Email, Graphic ID, Ringtone, Group, Anniversary, and Notes.
4. Press <**Options**> and select **Save** or press <**Save**> to save the contact.

To the SIM card:

1. In Idle mode, enter a phone number and press [OK/↵].
2. Select **SIM** → **New**.
3. Enter a name.
4. Press <**Save**> to save the contact.

Find a contact

1. In Idle mode, press <**Contacts**>.
2. Enter the first few letters of the name you want.
3. Select a contact.
4. Scroll to a number and press [↶] to dial, or [OK/↵] to edit the contact information.

Create and send a name card

1. In Idle mode, press <**Menu**> and select **Phonebook** → **My namecard**.
2. Specify your contact information.
3. Press <**Save**> to save the name card.
4. To send the name card, press <**Options**> and select **Send via** → a sending method.

Send messages

Send a text message (SMS)

1. In Idle mode, press <Menu> and select **Messages** → **Create new message** → **Text message**.
2. Enter the message text and press [OK/↵].
3. Enter destination numbers.
4. Press [OK/↵] to send the message.

Send a multimedia message (MMS)

1. In Idle mode, press <Menu> and select **Messages** → **Create new message** → **Multimedia message**.
2. Select **Subject**.
3. Enter the message subject and press [OK/↵].

4. Select **Image or video** or **Music or sound**.
5. For **Image or video**, select **Add image** or **Add video** and add an image or a video clip. For **Music or sound**, select **Add music** or **Add sound** and add a music file or a sound clip.
6. Select **Text**.
7. Enter the message text and press [OK/↵].
8. Press <Options> and select **Send**.
9. Select a destination field.
10. Enter a destination number or an e-mail address and press [OK/↵].
11. Press <Options> and select **Send** to send the message.

Send an e-mail

1. In Idle mode, press <Menu> and select **Messages** → **Create new message** → **Email**.
2. Select **Subject**.
3. Enter the e-mail subject and press [OK/↵].
4. Select **Message**.
5. Enter the e-mail text and press [OK/↵].
6. Select **File attach**.
7. Add image, video, sound, music files, or document files.
8. Press <Options> and select **Send**.
9. Select a destination field.
10. Enter an e-mail address and press [OK/↵].
11. Press <Options> and select **Send** to send the e-mail.

View messages**View a text message**

When a notification appears:

1. Press <View>.
2. Select the message from the Inbox.

From the Inbox:

1. In Idle mode, press <Menu> and select **Messages** → **My messages** → **Inbox**.
2. Select the text message (✉).

View a multimedia message

When a notification appears:

1. Press <View>.
2. Select the message from the Inbox.

From the Inbox:

1. In Idle mode, press <Menu> and select **Messages** → **My messages** → **Inbox**.
2. Select the MMS message (📧).

View an e-mail

1. In Idle mode, press <Menu> and select **Messages** → **My messages** → **Email inbox**.
2. Select **Check new mail**.
3. Select an e-mail or header.
4. If you selected a header, press <Options> and select **Retrieve** to view the body of the e-mail.

Use Bluetooth wireless

Your phone is equipped with Bluetooth technology, enabling you to connect the phone wirelessly to other Bluetooth devices and exchange data with them, talk hands-free, or control the phone remotely.

Turn on Bluetooth

In Idle mode, press <Menu> and select **Applications** → **Bluetooth** → **Activation** → **On**.

Search for and pair with a Bluetooth device

1. In Idle mode, press <Menu> and select **Applications** → **Bluetooth** → **My devices** → **Search new device**.
2. Select a device.
3. Enter a Bluetooth PIN or the other device's Bluetooth PIN, if it has one, and press <OK>. When the owner of the other device enters the same code, the pairing is complete.

Send data

1. Access an application, **Phonebook**, **My files**, **Calendar**, or **Memo**.
2. Select the item you want to send.
3. Press **<Options>** and select **Send via → Bluetooth**.
4. Select a device.
5. If necessary, enter the Bluetooth PIN and press **<OK>**.

Receive data

1. When a device attempts to access your phone, press **<Yes>** to permit the connection.
2. If necessary, press **<Yes>** to confirm that you are willing to receive.

Watch the phone display on a TV

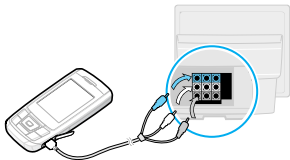
You can view the display of your phone on a TV screen by connecting the phone and TV with a TV out cable. This enables you to enjoy the photos, videos and music stored in the phone's memory with your family or friends on a larger screen.

Important TV information

- Depending on your particular TV model, the location and shape of the video input and audio output ports may vary. Match cable connector and TV port colours.
- Depending on the video system, the image may vibrate or in some other way be less than optimal.
- Depending on the video quality, some video clips may not display.
- You cannot use a Bluetooth stereo headset or the zooming feature in TV Out mode.

Transfer phone display to a TV

1. With the TV switched on, connect your phone to the TV with a TV out cable, as shown.



2. Switch the TV to External Input mode.

The display switches to TV Out mode and you can view the phone's display on the TV screen.

3. If necessary, set the video system for your TV in the **TV-out**. ► p. 99
4. Access the application you want and open files.

Use a memory card

You can use a memory card to increase your phone's memory capacity.

Important memory card information

- Frequent erasing and writing will shorten a memory card's lifespan.
- Do not remove a memory card from the phone or turn off the phone while data is being accessed or transferred. This could result in loss of data and/or damage to the card or phone.
- Do not subject memory cards to strong shocks.
- Do not touch memory card terminals with your fingers or metal objects. If dirty, wipe the card with a soft cloth.
- Keep memory cards away from small children or pets.
- Do not expose memory cards in a place subject to electro-static discharge and/or electrical noise.

Insert a memory card

1. Insert the memory card into the memory card slot, with the label side face up.



2. Press the card until it locks into place.

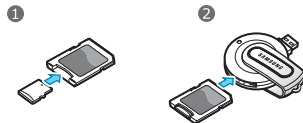
Remove the memory card

1. Press the memory card so that it is disengaged from the phone.
2. Remove the card from the slot.

Use a card adapter

Using a card adapter and a USB card reader/writer, you can read the card on a PC.

1. Insert a memory card into a card adapter, and then the adapter into a card reader/writer.



2. Plug the USB connector of the card reader/writer into the USB port on your PC.
3. Access the appropriate memory disk and copy to and from the card.

Enter text

Pinyin, Stroke, English word, ABC, Number, and Symbol modes

You can enter text in some features such as Messages, Phonebook, or Calendar, by using Pinyin, Stroke modes for Chinese, and English word and ABC modes for English. You can also enter numbers and symbols.

Changing the text input mode

- Press the right soft key and select the text input mode you want.

Phrasal Pinyin (**PY**) English word (**ENG**)

Phrasal T Stroke (**T STR**) English (**ABC**)

Phrasal S Stroke (**S STR**) Number (**123**)

Symbol (**SYM**)

- Press and hold [**✱**] to quickly switch to Symbol mode.

Using Pinyin mode

Pinyin is a system to enter Chinese words by spelling them phonetically (how they sound) using the Latin alphabet. With the Pinyin input method, you can enter Chinese characters by keying in the Pinyin string using the phone's keypad.

Entering characters in Pinyin mode

- Press the keys corresponding to the phonetic spelling, referring to the letters printed on the keys.

Example: To enter 力 (*Lì*), press [**5**] and [**4**].

- Press [**Left**] or [**Right**] to select alternative pinyins for the keys you have pressed.
- If you cannot find the character you want from the display, press [**Up**] or [**Down**] to scroll through choices.
- Press [**1**] to activate the character selection field. A number, from 1 to 5, is added to each character.
- Press the number key corresponding to the character you want.

Example: To enter 力, press [5] to enter → and then [3] to enter ↘.

- ☒ If you are uncertain of the stroke order, press [6] in place of each questionable stroke. Continue entering strokes until the character displays or until you finish the character.

- Press [Up] or [Down] to scroll through the choices.
- To select a character and add it to your message, press the corresponding key, [7] to [0].

Other Stroke mode operations

- Press [#] to insert a space.
- Press and hold [#] to start a new line.
- Press [Left] or [Right] to move the cursor.
- Press [C] to clear letters one by one. Press and hold [C] to clear the entire display.

Using ABC mode

Press the appropriate key until the character you want appears on the screen.

Key	Characters in order displayed	
	Upper case	Lower case
1	: ; ÷ ¡ 1 = " /	. , ? ! 1 - ' @ :
2	A B C 2 Ä Å Æ Γ	a b c 2 à ä å ç
3	D E F 3 É Δ	d e f 3 é è
4	G H I 4 Θ	g h i 4 ì
5	J K L 5 Λ	j k l 5
6	M N O 6 Ñ Ö Ø Æ	m n o 6 ñ ò ö ø
7	P Q R S 7 Π Σ	p q r s 7 β
8	T U V 8 Ü Φ	t u v 8 ù ü
9	W X Y Z 9 Ψ Ω	w x y z 9
0	0 * < > % # £	0 + () & _ \$

Other ABC mode operations

- To enter the same letter twice or to enter a different letter on the same key, wait for the cursor to move to the right automatically or press [Right]. Then, enter the next letter.
- Press [*] to change case. Initial capital (⬆), Capital lock (⬆), and Lower case (None) are available.
- Press [#] to insert a space.
- Press the Navigation keys to move the cursor.
- Press [C] to delete characters one by one. Press and hold [C] to clear the entire display.

Using English word mode

T9 is a predictive text input mode that allows you to key in any character using single keystrokes.

Entering a word in English word mode

1. Press [2] to [9] to start entering a word. Press each key once for each letter.
For example, press [4], [3], [5], [5], and [6] to enter *Hello* in T9 mode.
T9 predicts the word that you are typing, and it may change with each key that you press.
2. Enter the whole word before editing or deleting characters.
3. When the word displays correctly, go to step 4. Otherwise, press [0] to display alternative word choices for the keys that you have pressed.
For example, *Of* and *Me* use [6] and [3].
4. Press [#] to insert a space and enter the next word.

Other English word mode operations

- Press [**1**] to enter periods or apostrophes automatically.
- Press [*****] to change case. Initial capital (**↑**), Capital lock (**↑**), and Lower case (None) are available.
- Press [**#**] to insert a space.
- Press the Navigation keys to move the cursor.
- Press [**C**] to delete characters one by one. Press and hold [**C**] to clear the display.

Adding a new word to the English word dictionary

This feature may not be available for some languages.

1. Enter the word that you want to add.
2. Press [**O**] to display alternative words for your key presses. When there are no more alternative words, **Add word** displays on the bottom line.
3. Press **<Add word>**.
4. Enter the word you want using ABC mode and press **<Save>**.

Using Number mode

Number mode enables you to enter numbers.

Press the keys corresponding to the digits you want.

Using Symbol mode

Symbol mode enables you to insert symbols.

To	Press
scroll to a symbol set	the Navigation keys.
select a symbol	the corresponding number key.
clear the symbols	[C].
insert the symbols	<OK> .

Call functions

Advanced calling features

Making a call

1. In Idle mode, enter the area code and phone number.

- ☒ • Press [C] to clear the last digit or press and hold [C] to clear the whole display. You can move the cursor to edit an incorrect digit.
- Press and hold [*] to enter a pause between numbers.

2. Press [↵].
3. When you want to end the call, press [📞].

Making an international call

1. In Idle mode, press and hold [0]. The + character appears.
2. Enter the country code, area code, and phone number, then press [↵].

Redialling recent numbers

1. In Idle mode, press [↵] to display the list of recent numbers.
2. Scroll to the number you want and press [↵].

Making a call from Phonebook

Once you have stored a number in Phonebook, you can dial the number by selecting it from Phonebook.

► p. 38

You can also use the speed dial feature to assign your most frequently dialled numbers to specific number keys. ► p. 41

You can quickly dial a number from the SIM card using the location number assigned when stored.

1. In Idle mode, enter the location number for the phone number you want and press [#].
2. Scroll through other numbers, if necessary.
3. Press <Dial> or [↵] to dial the number you want.

Answering a call

When you receive a call, the phone rings and displays the incoming call image.

Press <**Accept**> or [↶] to answer the call.

Tips for answering a call

- When **Anykey answer** is active, you can press any key to answer a call, except for [📞], volume key and <**Reject**>. ► p. 98
- Press <**Reject**> or [📞] to reject a call.
- When **Up** in **Slide settings** is set to **Accept call**, you can simply open the phone. ► p. 96
- Press and hold [▲/▼] to reject a call or mute the ringer, depending on the **Volume key** setting. ► p. 97

Viewing missed calls

If you have missed calls, the screen displays how many calls you have missed.

1. Press <**View**>.

2. If necessary, scroll through the missed calls.
3. Press [↶] to dial the number you want.

Using the headset

Use the headset to make or answer calls without holding the phone.

Connect the headset to the jack on the right side of the phone. The button on the headset works as follows:

To	Press
redial the last call	the button and then press and hold it again.
answer a call	the button and hold.
end a call	the button and hold.

Options during a call

You can access a number of functions during a call.

Adjusting the volume during a call

Use [▲/▼] to adjust the earpiece volume during a call.

Press [▲] to increase the volume level and [▼] to decrease the volume level.

Placing a call on hold/Retrieving

Press <**Hold**> to place the call on hold or press <**Retrieve**> to retrieve the call.

Making a second call

You can make another call if your network supports this function.

1. Press <**Hold**> to put the call on hold.
2. Make the second call in the normal way.
3. Press <**Swap**> to switch between the calls.

4. Press <**Options**> and select **End held call** to end the call on hold.

5. To end the current call, press [⏏].

Answering a second call

You can answer an incoming call while already on the phone, if your network supports this function and you have activated the call waiting feature. ► p. 103

1. Press [↶] to answer the call. The first call is automatically put on hold.
2. Press <**Swap**> to switch between the calls.

Using the speakerphone feature

Use the speakerphone feature to talk and listen with the phone a short distance away.

Press [ok/📞] to activate the speakerphone feature. Press the key again to switch back to the earpiece.

Using In-call options

Press <**Options**> to access the following options during a call:

- **Switch to headset/Switch to phone:** switch the call to a Bluetooth headset or hands-free car kit or back to the phone.
- **Voice clarity on/Voice clarity off:** remove extraneous noise and increase call quality so that the person with whom you are speaking can hear you clearly even if you are in a noise place.
- **Mute/Unmute:** switch off the phone's microphone so that the other person on the phone cannot hear you, or switch it back on.
- **Mute keys/Send keys:** switch the key tones off or on.

☒ To communicate with answering machines or computerised telephone systems, **Send keys** must be selected.

- **Phonebook:** access the contact list.
- **Send DTMF:** send the DTMF (Dual tone multi-frequency) tones as a group. The DTMF tones are the tones used in phones for tone dialling, sounding when you press the number keys. This option is helpful for entering a password or an account number when you call an automated system, like a banking service.
- **Message:** read an incoming message and send a new message. ► p. 57
- **Conv. record:** record your call conversation.
- **Join:** set up a multi-party call by adding a caller on hold to a currently active call. You can include up to five people on a multi-party call.
- **Split:** have a private conversation with the selected participant. The other participants can converse with each other. After the private conversation, select **Join** to return both private participants to the multi-party call.

- **Transfer:** transfer the currently active call to a caller on hold. The two callers can talk to each other, but you are disconnected from the call.
- **Remove:** disconnect the selected participant.
- **End held call:** disconnect the call currently on hold.
- **SIM service:** access special services, such as news, weather forecasts, entertainment, and location services, provided by your SIM card. This option is available when you use a SIM card supporting SIM AT menus.

Menu functions

All menu options listed

Call log *(Menu 1)*

Use this menu to view the calls you have dialled, received, or missed, and the length of the calls. You can also check the cost of your calls, if the SIM card supports this function.

To access this menu, press <**Menu**> in Idle mode and select **Call log**.

Recent contacts *(Menu 1.1)*

This menu displays the most recent calls dialled, received, or missed.

Accessing a call record

1. Press [Left] or [Right] to move to another call type.
2. Press [Up] or [Down] to scroll through the call list.

3. Press [**↶**] to dial a number, or [**OK/⏏**] to view the details of a call.

Using call record options

While viewing call details, press **<Options>** to access the following options:

- **Call:** make a call to the number.
- **Add to Phonebook:** save the number in Phonebook.
- **View contact details:** access contact information, if the caller is saved in Phonebook.
- **Send message:** send an SMS or MMS message.
- **Delete:** delete the selected call record or all records.
- **Add to reject list:** add the number to the Reject list.

Missed calls *(Menu 1.2)*

This menu displays the most recent received calls that you did not answer.

Dialled calls *(Menu 1.3)*

This menu displays the most recent calls you have dialled.

Received calls *(Menu 1.4)*

This menu displays the most recent calls you have received.

Delete all *(Menu 1.5)*

Use this menu to delete all of the records in each call type.

1. Press [**OK/⏏**] to select the call types to clear.
2. Press **<Delete>**.
3. Press **<Yes>** to confirm the deletion.

Area code *(Menu 1.6)*

Use this menu to look up a national or international area code.

1. Select an area code type.

2. Enter a name for the city, castle, or country you want to find.
If necessary, press <**Change**> to change the text input mode.
3. Select the entry you want.
4. If you select a castle, select one of the cities that belongs to the selected castle.
5. When the selected area code appears on the Dialling mode screen, enter the rest of the phone number you want.
6. Press <**Save**> to save the number to Phonebook, or press [**↶**] to dial it.

Call time *(Menu 1.7)*

This menu displays the time log for calls made and received. The actual time invoiced by your service provider will vary.

- **Last call time:** check the length of your last call.
- **Total sent:** check the total length of all the calls you have dialled.
- **Total received:** check the total length of all the calls you have received.

- **Reset timers:** reset the call timers. You need to enter the phone password.

☒ The password is preset to **00000000**. You can change this password. ► p. 104

Call costs *(Menu 1.8)*

This network feature displays the cost of calls. This menu is available only if your SIM card supports this feature. Note that this is not intended to be used for billing purposes.

- **Last call cost:** check the cost of your last call.
- **Total cost:** check the total cost of all your calls. If the total cost exceeds the maximum cost set in **Set max cost**, you must reset the counter before you can make another call.
- **Max cost:** check the maximum cost limit set in **Set max cost**.
- **Reset counters:** reset the cost counters.
- **Set max cost:** set the maximum cost authorised for your calls.

- **Price/Unit:** set the price per unit that is applied when the cost of your calls is calculated.

Phonebook *(Menu 2)*

You can store phone numbers on your SIM card and in your phone's memory. The SIM card and phone's memory are physically separate, but they are used as a single entity called Phonebook.

To access this menu, press <**Menu**> in Idle mode and select **Phonebook**.

Contact list *(Menu 2.1)*

Use this menu to search for numbers in Phonebook.

Finding a contact

1. Enter the first few letters of the name that you want to find.
2. Select the name you want from the list.
3. Scroll to a number and press [**↵**] to dial, or press [**OK/⌂**] to edit the contact information.

Using Phonebook options

While viewing contact details, press <**Options**> to access the following options:

- **Edit:** edit contact information.
- **Send message:** send an SMS or MMS message to the selected number, or send an MMS message or e-mail to the selected e-mail address.
- **Copy:** copy the number to the phone's memory, to the SIM card, or to the FDN list.
- **Copy to phone:** save the e-mail address to the phone's memory.
- **Send via:** send the contact via SMS, MMS, e-mail, or Bluetooth.
- **Delete:** delete the selected contact.
- **Mark as default number:** set the selected number as the default for the contact.
- **Print via Bluetooth:** print contact information by connecting the phone to a printer via Bluetooth. Some printers may not be compatible with the phone.

FDN contacts (Menu 2.2)

Use this menu to create a list of contacts to be used in FDN (Fixed Dialling Number) mode, in which the phone allows outgoing calls only to the specified phone numbers, if your SIM card supports this feature. You can activate FDN mode in the **FDN mode** menu. ► p. 105

Adding a contact

1. From the FDN list, press <**Options**> and select **Add**.
2. Enter your PIN2 and press <**OK**>.
3. Enter information about the contact:
 - **Name**: assign a name.
 - **Phone number**: add a number.
 - **Location**: assign a location number.
4. Press <**Save**> to save the contact.

Using contact options

You can access contact options by pressing <**Options**> in the contact list. ► p. 38

Create contact (Menu 2.3)

Use this menu to add a new contact to Phonebook.

Storing a number in the phone's memory

1. Select **Phone**.
2. Change the settings or enter information about the contact:
 - **Last name/First name**: assign a name.
 - **Mobile/Home/Office/Fax/Other**: add a number in any category.
You can change the number type, or set the number as the default for the contact by pressing <**Options**> and selecting **Change type** or **Mark as default number**.
 - **Email**: assign an e-mail address.

☒ You can set domain name extensions and retrieve one by pressing <**Options**> and selecting **Common address**.
 - **Graphic ID**: assign a caller ID image to alert you to a call from the person.

- **Ringtone:** assign a ringtone to alert you to a call from the person.
- ☒ The settings specified in **Graphic ID** and **Ringtone** are given priority over group settings.
- **Group:** assign the number to a caller group.
 - **Anniversary:** enter the person's birthday.
 - **Notes:** add a memo about the person.
3. Press **<Options>**, and select **Save** or press **<Save>** to save the contact.

Storing a number on the SIM card

1. Select **SIM**.
 2. Enter information about the contact:
 - **Name:** assign a name.
 - **Phone number:** add a number.
 - **Location:** assign a location number.
- ☒ To assign a caller ID image, ringtone, or group, the contact must be saved to the phone's memory.
3. Press **<Save>** to save the contact.

Group (Menu 2.4)

Use this menu to organise your contacts in caller groups.

Adding members to a caller group

1. Select a group.
2. Press **<Add>**.
3. Press [**OK/✓**] to select the contacts you want.
4. Press **<Options>** and select **Add**.

Managing caller groups

While viewing the group list, press **<Options>** to access the following options:

- **View:** display the members of the selected group.
- **Add:** add a new group.
- **Edit:** change the properties of the selected group.
- **Send message:** send an SMS, MMS, or e-mail to the members you want.
- **Delete:** delete the selected group. Group members, however, will not be deleted from Phonebook.

Speed dial *(Menu 2.5)*

Use this menu to assign speed dial numbers (2 to 9) for 8 of your most frequently dialled numbers.

Assigning speed dial entries

1. Select a key location from **2** to **9**. Key **1** is reserved for your voicemail server.
2. Press **<Options>** and select **Add** → **Contact** or **FDN contact**.
3. Select a number, if the contact has more than one number.

Managing speed dial entries

From the Speed dial screen, press **<Options>** to access the following options:

- **Add**: assign a number to an unassigned key. You can select a contact from Phonebook or the FDN list.
- **View**: check the name and number assigned to the key.
- **Change**: assign a different number to a key.

- **Remove**: clear the speed dial setting for a key.

Dialling speed dial numbers

In Idle mode, press and hold the appropriate key.

My namecard *(Menu 2.6)*

Use this menu to create a name card and send it to other people.

Saving your name card

The procedure for creating your name card is the same as the one for saving a number in the phone's memory. ► p. 39

Using name card options

After saving your name card, press **<Options>** to access the following options:

- **Edit**: edit the name card.
- **Send via**: send the name card via SMS, MMS, e-mail, or Bluetooth.

Menu functions

- **Exchange namecard:** exchange the name cards with another person's name card via Bluetooth.
- **Remove:** delete the name card.
- **Print via Bluetooth:** print your contact information by connecting the phone to a printer via Bluetooth. Some printers may not be compatible with the phone.

Own number *(Menu 2.7)*

Use this feature to check your phone numbers, or to assign a name to each of the numbers. Changes made here do not affect the actual subscriber numbers on your SIM card.

Management *(Menu 2.8)*

Use this menu to manage contacts in Phonebook.

- **Save new contacts to:** select a default memory location for saving contacts. If you select **Always ask**, the phone will ask you to select a memory location each time you save a number.

- **Copy all:** copy all of the contacts stored on the SIM card to the phone's memory, or vice versa.
- **Delete all:** delete all of the contacts from your phone's memory, your SIM card, or the FDN list.
- **Search by initials:** search for a contact with the initial letters of the first name and last name in the contact list.
- **Memory status:** display the number of contacts you have stored in Phonebook.

Service number *(Menu 2.9)*

Use this menu to view the list of Service Dialling Numbers (SDN) assigned by your service provider, including emergency numbers and numbers for directory enquiries. This menu is available if your SIM card supports SDN.

1. Scroll to the number you want and press <**View**>.
2. Press <**Dial**> or [**↵**].

Applications *(Menu 3)*

Use this menu to play music files, edit photos, or play Java applications. You can also use the Bluetooth feature.

To access this menu, press <Menu> in Idle mode and select **Applications**.

Music player *(Menu 3.1)*

Use this menu to enjoy music. First, you need to save music files in your phone's memory or on a memory card. To enjoy high quality music, you can use an optional Bluetooth stereo headset.

- ☒ Normal headsets and Bluetooth mono headsets are not compatible with the music player.

Downloading or receiving music files

You can play *.mp3, *.aac, and *.m4a files.

Use the following methods to save music files to your phone:

- Download from the wireless web ► p. 53

- Download from a computer using the Samsung PC Studio programme ► Samsung PC Studio User's Guide
- Receive via Bluetooth ► p. 51
- Copy to a memory card and insert the card into the phone ► p. 24

Downloaded or received files are stored in the **Music** folder. ► p. 77

Creating a play list

Add the music files to the play list so you can play them.


1. From the music player screen, press <Options> and select **Add music from** → **Phone** or **Memory card**.
2. Press [OK/Enter] to select the files you want and press <Add>.

Playing music files

1. From the music player screen, press <Options> and select **Play via**.

2. Select **Phone** to use the phone speaker.
Select **Bluetooth stereo headset** to use a Bluetooth stereo headset and then search for and connect the phone to the headset.

During playback, use the following keys:

Key	Function
OK/ 	Pauses or resumes playback.
Up	Accesses the current play list.
Left	Moves back to the previous file. Moves backward in a file when held down.
Right	Skips to the next file. Skips forward in a file when held down.
▲ / ▼	Adjusts the volume.
1	Changes the equaliser mode.
2	Changes the playback animation.

Key	Function
3	Changes the repeat mode.
4	Turns 3D sound on or off.
6	Sets the music player to play tracks in random order.
7	Marks the beginning and ends of the section you want to repeat. ▶ next section
Down	Stops playback.

Repeating a section of a track

You can select a section of the playing file and repeat the section indefinitely.

1. During playback, press [7] to mark the beginning of the section you want to repeat.
The marked section is highlighted in the playback progress bar.

2. Press [**7**] again to mark the end of the section you wish to repeat. The player repeats the marked section.
3. To stop repeating, press [**7**].

Using music player options

From the music player screen, press <**Options**> to access the following options:

- **Play/Pause**: begin or pause playback.
- **Play via**: select a sound output mode, **Phone** or **Bluetooth stereo headset**. If you selected **Bluetooth stereo headset**, you can use a Bluetooth stereo headset and then search for and connect the phone to the headset.
- **Transfer to Bluetooth stereo headset/Transfer to phone**: switch the sound output to a Bluetooth headset or the phone speaker.
- **Open playlist**: access the current play list or album list.
- **Remove from playlist**: remove the selected file from the play list.

- **Send via**: send the current file via MMS, e-mail, or Bluetooth.
- **Set as**: set the file as your ringtone, as a ringtone for a Phonebook entry, or as an alarm tone.
- **Settings**: change the default settings for playing music files.
 - Repeat mode**: select a repeat mode.
 - Shuffle**: set the music player to play tracks in random order.
 - Equaliser**: change the equaliser setting.
 - 3D sound**: turn 3D sound on or off.
 - Visualization**: change the playback animation.
 - Volume**: select a volume level.
 - Music overrides other sounds**: set the Music player to continue playback even if you exit it.
- **Details**: access the file properties.
- **Shortcuts**: view the functions of the keys you can use during playback.

Accessing the play list

From the music player screen, press [Up].

Press <**Options**> to access the following options:

- **Play via:** select a sound output mode.
- **Add music from:** add files to the play list.
- **Move track in playlist:** move the selected file to the position you want within the play list.
- **Go to all playlists:** access the album list.
- **Move to:** move the selected file to another music album.
- **Copy to:** copy the selected file to another music album.
- **Remove:** remove the selected file or all files from the play list.
- **Details:** access the file properties.

Voice recorder *(Menu 3.2)*

Use this menu to record voice memos. A voice memo can be up to one hour long.

Recording a voice memo

1. Press [OK/⏏] to start recording.
2. Speak into the microphone.
Press [OK/⏏] to pause or resume the recording.
3. When you have finished, press <**Save**> or [Down]. The voice memo is automatically saved.
4. Press [OK/⏏] to review the voice memo, or [Up] to record a new memo.

Playing a voice memo

1. From the voice recorder screen, press <**Options**> and select **Go to My voice clips**.
2. Select a voice memo. The memo plays.

During playback, use the following keys:

Key	Function
OK/⏏	Pauses or resumes playback.
Left	Moves backward in a file when held down.
Right	Skips forward in a file when held down.

Key	Function
▲/▼	Adjusts the volume.
Down	Stops playback.

Using voice recorder options

From the voice recorder screen, press <**Options**> to access the following options:

- **Record**: record a new voice memo.
- **Go to My voice clips**: access the voice memo list.
- **Settings**: customise the default settings for the voice recorder:

Recording time: select a recording time.

- **Limit for multimedia messages**: record a voice memo for adding to an MMS message.
- **Limit for emails**: record a voice memo for adding to an e-mail.
- **1 hour**: record a voice memo of up to one hour.

Volume: select a volume level.

Default name: change the default prefix of file names.

Visualisation: select an equaliser image.

Image editor (Menu 3.3)

Use this menu to edit your photos using an assortment of editing tools.

Applying an effect

1. Press <**Options**> and select **New image** → **Open** or **Take a photo**.
2. Select a photo or take a new photo.
3. Press <**Load**>, or press <**Options**> and select **Load**.
4. Press <**Options**> and select **Effects** → an effect option.
5. Press <**Done**>.
6. Press <**Options**> and select **Save as**.
7. Press <**Yes**>.
8. Enter a new file name and press [OK/✓].

Fine-tuning

1. Select a photo or take a new photo.
2. Press <**Load**>, or press <**Options**> and select **Load**.
3. Press <**Options**> and select **Adjust** → an option.
 - **Brightness**: adjust the image brightness.
 - **Contrast**: adjust the image contrast.
 - **Colour**: adjust the image balance.
4. Adjust the image brightness, contrast, or colour balance.
5. Press <**Done**>.
6. Press <**Options**> and select **Save as**.
7. Press <**Yes**>.
8. Enter a new file name and press [OK/↵].

Reorienting

1. Select a photo or take a new photo.

2. Press <**Load**>, or press <**Options**> and select **Load**.
3. Press <**Options**> and select **Transform** → an option.
 - **Rotate**: rotate the photo 90 degrees clockwise or counterclockwise.
 - **Flip**: flip the photo.
4. Press <**Done**>.
5. Press <**Options**> and select **Save as**.
6. Press <**Yes**>.
7. Enter a new file name and press [OK/↵].

Adding visual features

You can decorate photos by adding a frame or an image.

1. Select a photo or take a new photo.
2. Press <**Load**>, or press <**Options**> and select **Load**.

3. Press **<Options>** and select **Insert** → a feature type.
 - **Frame:** add a decorative frame.
 - **Clip Art:** add an image.
 - **Emoticon:** add an emoticon.
4. Select an item.
5. Adjust the position of the inserted item and press **<Done>**.
6. Press **<Options>** and select **Save as**.
7. Press **<Yes>**.
8. Enter a new file name and press [**OK/!**].

Bluetooth *(Menu 3.4)*

Using Bluetooth wireless, you can connect the phone wirelessly to other Bluetooth devices and exchange data with them, talk hands-free, or control the phone remotely.

Bluetooth technology allows free wireless connections between all Bluetooth-compliant devices within a range of 10 metres. Since the devices communicate

using radio waves, they do not need to be in line of sight to each other.



- If there are obstacles between the devices, the maximum operating distance may be reduced.
- It is recommended that you don't use the Bluetooth feature while using multimedia features such as voice recorder, camera, and music player, or vice versa for better performance.
- Some devices, especially those that are not tested or approved by SIG may be incompatible with your phone.

Setting up the Bluetooth feature

The **Bluetooth** menu provides the following options:








- **Activation:** activate or deactivate the Bluetooth feature.
- **My devices:** search for connectable Bluetooth devices.
- **My phone's visibility:** allow other Bluetooth devices to connect to your phone.

- **My phone's name:** assign a Bluetooth device name to your phone, which is then displayed on other devices.
- **Secure mode:** determine if the phone asks for your confirmation when other devices access your data.
- **Bluetooth services:** display available Bluetooth services.

Searching for and pairing with a Bluetooth device

1. From the **Bluetooth** menu, select **My devices**.
2. Select **Search new device**.

After searching, a list of devices to which you can connect displays. The following icons indicate the kind of device:

- | | |
|---------------------------------------------------------------------------------------------------------------------|--------------------------------------------------------------------------------------------------|
| •  Stereo headset | •  Mobile phone |
| •  Computer | •  PDA |
| •  Unknown device | •  Printer |
| •  Mono headset/Hands-free car kit | |

The colour of the icon indicates the status of the device:

- Grey for unpaired devices
- Blue for paired devices
- Orange for devices that are currently connected to your phone

3. Select a device.
4. Enter a Bluetooth PIN and press **<OK>**. This code is used just once and you do not need to memorise it.

When the owner of the other device enters the same code, pairing is complete.



Some devices, especially headsets or hands-free car kits, may have a fixed Bluetooth PIN, such as **0000**. If the other device has one, you must enter the code.

Using device options

From the device list, press **<Options>** to access the following options:

- **Connect:** connect to a headset or hands-free car kit.

- **Disconnect:** end the connection with the connected device.
- **Browse files:** search for data from the device and import data directly to your phone.
- **Service list:** access the Bluetooth service list of the device.
- **Rename:** rename the paired device.
- **Authorise device/Unauthorise device:** determine whether or not the phone asks you to permit connection when other devices try to connect to your phone.
- **Delete:** remove the selected device or all devices.

Sending data via Bluetooth

1. Activate the Bluetooth feature.
2. Select the application in which the item you want to send is stored.
3. Scroll to the item you want and press **<Options>**.
4. Select **Send via → Bluetooth**.
The phone searches for devices within range and displays a list of available devices.

5. Select a device.
6. If necessary, enter the Bluetooth PIN needed for pairing and press **<OK>**.

Receiving data via Bluetooth

To receive data via Bluetooth, your phone's Bluetooth feature must be active and its visibility must be enabled.

If an unauthorised Bluetooth device sends data to your phone, the phone displays a confirmation message. To receive data, press **<Yes>**.

Java world *(Menu 3.5)*

Use this menu to access the embedded Java games and downloaded Java applications.

Playing a game

Select a game from the game list and follow the onscreen instructions. The procedure may differ from game to game.

Using Java application options

From the application list, press <**Options**> to access the following options:

- **Start:** launch the selected application.
- **Delete:** delete the selected application.
- **Details:** access the application properties.
- **Permission:** set permission settings for services charging you additional costs, such as network access and SMS.
- **Lock/Unlock:** lock the application to prevent it from being deleted, or unlock the application.
- **Upgrade:** upgrade the application to the latest version, except for embedded games.
- **Send information via text message:** send the URL address containing the application via SMS, except for embedded games.
- **Memory status:** access memory information for applications.

- **Network settings:** customise a connection profile to be used for applications requiring network access. The following options are available:

APN: enter the access point name of the network gateway.

Login ID: enter the user ID.

Password: enter the password.

Proxy: select whether or not the phone uses a proxy server to launch the web browser.

Proxy settings: customise the following proxy settings:

*When the proxy is set to **Enable**:*

- **IP address:** enter the gateway address.

- **Port:** enter the port number.

*When the proxy is set to **Disable**:*

- **DNS1:** enter the primary address.

- **DNS2:** enter the secondary address.

SIM-AT (Menu 3.6)

This menu is available if you use a SIM-AT card that supports SIM Application Toolkit menus and provides additional services, such as news, weather, sports, entertainment, and location services. Available services may vary, depending on your service provider's plans. For details, see your SIM card instructions or contact your service provider.

Browser (Menu 4)

The Wireless Application Protocol (WAP) on your phone allows you to access the wireless web. Using the web browser, you can access up-to-date information and a wide variety of media content, such as wallpapers, ringtones, and music files.

To access this menu, press <**Menu**> in Idle mode and select **Browser**.


Home (Menu 4.1)

Use this menu to connect your phone to the network and load the homepage of the wireless web service provider.

Navigating the web browser

To	Press
scroll through browser items	[Up] or [Down].
select a browser item	< ✓ > or [OK/↵].
return to the previous page	< Back > or [C].
return to the homepage	[C] and hold.

Using browser options

1. Select  and press < ✓ >, or press [*].
2. Select one of the following browser options:
 - **Back**: go back to the previous page.
 - **Home**: go back to the homepage.
 - **Exit**: exit the web browser.
 - **Reload**: reload the current page.

- **Show URL:** display the URL address of the current web page.
- **About ...:** access version and copyright information about the browser.

Accessing other phone menus

From any web page, press [#] to access the following options:

- **Enter URL:** enter a URL address manually.
- **Bookmarks:** switch to the **Bookmarks** menu.
- **Messages:** check the messages stored in the **My messages** folder. You can also create and send a new SMS message.
- **My files:** switch to the **My files** menu.

Accessing the web page you have last visited

In Idle mode, press [OK/↵] and select **Recent page**.

Exiting the browser

Press [⏏] to exit the browser.

Fun club (Menu 4.2)

Use this menu to access Samsung Fun club, the preset web site providing Samsung mobile phone users with attractive download services of updated ringtones and wallpapers.

SFC home (Menu 4.2.1)

Selecting this menu loads the Samsung Fun Club homepage.

For further details about this service, contact your service provider.

Service area (Menu 4.2.2)

Each time you move to HongKong or China, you need to change this setting to use the SFC service, according to the area where you are. You can choose either **China** or **China HK**.

Bookmarks (Menu 4.3)

Use this menu to save URL addresses to quickly access a website.

Adding a bookmark

1. Select an empty location and select the **Name** line.
2. Enter a name for the bookmark and press [OK/↵].
3. Select the **URL** line.
4. Enter the URL address and press [OK/↵].
5. Press <**Save**> to save the bookmark.

Accessing a bookmarked page

Selecting a bookmark item launches the web browser and access the associated web page.

Using bookmark options

After saving an item, press <**Options**> to access the following options:

- **Open:** access the website.
- **Edit:** edit the address and name of the bookmark.
- **Delete:** delete the selected bookmark or all bookmarks.

Enter URL *(Menu 4.4)*

Use this menu to manually enter the URL address of a website and access the website.

Clear cache *(Menu 4.5)*

Use this menu to clear the cache, which is the temporary memory that stores the web pages you have recently accessed.

Profile settings *(Menu 4.6)*

Use this menu to set up servers for the web browser. Contact your service provider for details about your setting options.

For each server, the following options are available:

- **Profile name:** assign a name to the server profile.
- **Home URL:** enter the address of your homepage.
- **Bearer:** select a bearer for each type of network address accessed.
- **Proxy:** select whether or not the phone uses a proxy server to launch the web browser.

- **GPRS settings:** customise the GPRS network settings:

*When the proxy is set to **Enable**:*

Proxy IP: enter the web gateway address.

Proxy port: enter the port number.

APN: enter the access point name of the GPRS network gateway.

Login ID: enter the user ID.

Password: enter the password.

*When the proxy is set to **Disable**:*

DNS1: enter the primary address.

DNS2: enter the secondary address.

APN: enter the access point name of the GPRS network gateway.

Login ID: enter the user ID.

Password: enter the password.

- **GSM settings:** customise the following GSM network settings:

*When the proxy is set to **Enable**:*

Proxy IP: enter the web gateway address.

Proxy port: enter the port number.

Dial number: enter the PPP server phone number.

Login ID: enter the user ID.

Password: enter the password.

Data call type: select a data call type.

*When the proxy is set to **Disable**:*

DNS1: enter the primary address.

DNS2: enter the secondary address.

Dial number: enter the PPP server phone number.

Login ID: enter the user ID.

Password: enter the password.

Data call type: select a data call type.

Current profile *(Menu 4.7)*

Use this menu to activate one of the proxy servers you have set up.

Messages *(Menu 5)*

Use the **Messages** menu to send and receive short messages, multimedia messages, and e-mails. You can also access push messages and broadcast messages features.

To access this menu, press <**Menu**> in Idle mode and select **Messages**.

Create new message *(Menu 5.1)*

Use this menu to create and send text messages, multimedia messages, or e-mails.

Text message *(Menu 5.1.1)*

Short Message Service (SMS) allows you to send or receive text messages including pictures, audio clips, and animated images.

Creating and sending an SMS message

1. Enter your message and press [**OK/↵**].



- The maximum number of characters allowed in a message varies by service provider. If your message exceeds the maximum number of characters, the phone will split the message.
- You can use various options by pressing <**Options**>. ► next section

2. Enter a destination number.

To send the message to more than one recipient, fill in additional destination fields.

3. Press [**OK/↵**] to send the message.

Using options while composing an SMS message

While composing a message, press <**Options**> to access the following options:

- **Send only**: just send the message.

- **Save and send:** send the message and then save it.
- **Preview as vivid message:** view the message in 3D view mode. The phone converts message text to 3D vivid graphics. This option is available only when the message consists of a single page.
- **Insert:** add a template, Phonebook entry, or bookmarked URL address.
- **Add picture/Add animation/Add melody:** attach a simple image, animated image, or a melody.
- **Attach:** add name cards or calendar data as data format attachments.
- **Save in:** save the message in another message folder.
- **Text style:** change the text attributes.
- **Add new phrases:** add a word or phrase to the T9 dictionary.
- **Cancel:** exit the current screen and return to the Create new message screen.

Multimedia message (Menu 5.1.2)

Multimedia Message Service (MMS) delivers messages containing a combination of text, image, video, and audio, from phone to phone or from phone to e-mail.

Creating and sending an MMS message

1. Select the **Subject** line.



You can use various options by pressing **<Options>**. ► next section

2. Enter the message subject and press [OK/✓].
3. Select the **Image or video** line.
4. Select **Add image** or **Add video** and add an image or a video clip.



- The maximum size allowed for a message can differ, depending on your service provider.
- Depending on the file type or DRM (Digital Rights Management) system, some files may not be able to be forwarded.

5. Select the **Music or sound** line.
6. Select **Add music** or **Add sound** and add a music file or a sound clip.
7. Select the **Text** line.
8. Enter the message text and press [OK/↵].
9. When you have finished, press <**Options**> and select **Send**.
10. Select a destination filed.
11. Enter a phone number or an e-mail address and press [OK/↵].
To send the message to more than one recipient, fill in additional destination fields.
12. Press <**Options**> and select **Send** to send the message.

Using options while composing an MMS message

While composing a message, press <**Options**> to access the following options:

- **Add**: add the message subject or message text.

- **Add image/Add video/Add music/Add sound**: add an image, video clip, or sound clip.
- **Edit**: edit the subject or text.
- **Change image/Change video/Change music/Change sound**: replace an added item.
- **Preview**: view the message as it will be shown on the recipient's phone.
- **View**: open the selected attachment.



Some attached files from the **Other files** folder cannot be open in your phone.

- **Send**: send the message.
- **Save in**: save the message in another message folder.
- **Add page**: add pages. Move to each page by pressing [Left] or [Right].
- **Delete page**: delete the added page.
- **Edit page**: change the duration of page display or move the page forward or backward among the other pages.

- **Attach:** attach name cards or calendar data as data format attachments, memos, or document files stored in the **Other files** folder.
- **Remove subject/Remove text/Remove media/Remove:** remove an added item.

Email (Menu 5.1.3)

You can create and send e-mails that include text, audio, and images.

Creating and sending an e-mail

1. Select the **Subject** line.

☒ You can use various options by pressing **<Options>**. ▶ next section

2. Enter the subject of your e-mail and press [OK/↵].
3. Select the **Message** line.
4. Enter the e-mail text and press [OK/↵].
5. Select the **File attach** line.
6. Add media files, document files stored in the **Other files** folder, Phonebook entries as name cards, or calendar data as data format attachments.



Depending on the file type or DRM (Digital Rights Management) system, some files may not be able to be forwarded.

7. When you have finished, press **<Options>** and select **Send**.
8. Select a destination field and press [OK/↵].
9. Enter an e-mail address.
To send the e-mail to more than one recipient, fill in additional destination fields.
10. Press **<Options>** and select **Send** to send the e-mail.

Using options while composing an e-mail

While composing an e-mail, press **<Options>** to access the following options:

- **Add:** add the subject of your e-mail or e-mail text.
- **Edit:** edit the subject or text.
- **Add image/Add videos/Add sounds/Add music:** add media files stored in the phone's memory.

- **Add other file:** add document files stored in the **Other files** folder.
- **Add from memory card:** add files stored on a memory card.
- **View/Play:** open the selected attachment.

☒ Some attached files from the **Other files** folder cannot be open in your phone.

- **Send:** send the e-mail.
- **Save in:** save the e-mail in another message folder.
- **Attach:** attach Phonebook entries as name cards or calendar data as data format attachments.
- **Remove subject/Remove message/Remove:** clear the subject or text, or attachment.
- **Remove all attachments:** delete all attachments.

My messages *(Menu 5.2)*





Use this menu to access messages you have received, sent, or which have failed in sending.

Inbox *(Menu 5.2.1)*

This folder stores all of the messages you have received, except for e-mails.

Viewing a message

The following icons may appear on the message list to show the message type:

-  SMS
-  MMS
-  MMS notifications
-  Push messages

☒ A ! icon next to a message means that the message is of high priority. A grey-coloured message icon indicates low priority.

Using message options

While viewing a message, press <**Options**> to access the following options:

SMS messages

- **Reply via:** reply to the sender via SMS or MMS.
- **Forward:** forward the message to other people.
- **View as vivid message/View as text message:** view the message in 3D view mode or switch back to normal view mode. This option is available only when the message consists of a single page.
- **Delete:** delete the message.
- **Move to phone/Move to SIM:** move the message between the SIM card and the phone's memory.
- **Zoom view:** reduce the font size so that you can view more text on one screen.
- **Add to block list:** add the sender's number to the Block list.
- **Cut address:** extract URL addresses, e-mail addresses, or phone numbers from the message.

- **Attached items:** save media content from the message into your phone's memory.
- **Print via Bluetooth:** print the message by connecting the phone to a printer via Bluetooth. Some printers may not be compatible with the phone.
- **Lock/Unlock:** lock the message to prevent it from being deleted, or unlock the message.

MMS messages

- **Retrieve:** retrieve the MMS message from the server.
- **Reply via text message:** send a reply message via SMS.
- **Reply via multimedia message to:** send a reply message via MMS to the sender or all recipients.
- **Forward:** forward the message to other people.
- **Delete:** delete the message.
- **Add to block list:** add the sender's number to the Block list.

- **Cut address:** extract URL addresses, e-mail addresses, or phone numbers from the message.
- **Attached items:** save media content from the message into your phone's memory.
- **Lock/Unlock:** lock the message to prevent it from being deleted, or unlock the message.
- **Details:** access the message properties.

Push messages

- **Open URL:** connect to the URL address specified in the message.
- **Delete:** delete the message.
- **Cut address:** extract URL addresses, e-mail addresses, or phone numbers from the message.

Delivery reports

- **Delete:** delete the report.

Configuration messages

- **Install:** apply the configuration value in the message to the phone.
- **Delete:** delete the message.

- **Cut address:** extract URL addresses, e-mail addresses, or phone numbers from the message.
- **Lock/Unlock:** lock the message to prevent it from being deleted, or unlock the message.

Draft *(Menu 5.2.2)*

This folder stores messages you have saved to send at a later time.

When you select an SMS or e-mail message, it opens in Edit mode so that you can edit and/or send the message.

When you select an MMS message, it opens in Preview mode as in the Inbox. To edit the MMS message, press <**Options**> and select **Edit**.

Outbox *(Menu 5.2.3)*

This folder stores messages that the phone is attempting to send or has failed to send.

While viewing a message, press <**Options**> to access the following options:

- **View/Play:** view or play the selected file.
- **Save to My files/Save:** save the selected file.

- **Send again:** retry sending the message.
- **Forward:** forward the message to other people.
- **Delete:** delete the message.
- **Move to phone/Move to SIM:** move the message between the SIM card and the phone's memory.
- **Print via Bluetooth:** print the message by connecting the phone to a printer via Bluetooth. Some printers may not be compatible with the phone.
- **Lock/Unlock:** lock the message to prevent it from being deleted, or unlock the message.
- **Details:** access the message properties.

Sentbox (Menu 5.2.4)

This folder stores messages that you have sent successfully.

While viewing a message, press <**Options**> to access the following options:

- **View/Play:** view or play the selected file.
- **Save to My files/Save:** save the selected file.

- **Forward:** forward the message to other people.
- **Cut address:** extract URL addresses, e-mail addresses, or phone numbers from the message.
- **Delete:** delete the selected message.
- **Move to phone/Move to SIM:** move the message between the SIM card and the phone's memory.
- **Print via Bluetooth:** print the message by connecting the phone to a printer via Bluetooth. Some printers may not be compatible with the phone.
- **Lock/Unlock:** lock the message to prevent it from being deleted, or unlock the message.
- **Details:** access the message properties.

Email inbox (Menu 5.2.5)




This folder stores e-mails that you have received.


Viewing an e-mail

1. Press <**Select**> when **Check new mail** displays to get new e-mails from the server. The phone

checks the e-mail server and downloads new e-mails.

The following icons may appear on the list to show the e-mail status:

-  Retrieved from the server
-  Being retrieved
-  Failed to be retrieved

 A ! icon next to a message means that the e-mail is of high priority. A grey-coloured e-mail icon indicates low priority.

2. Select an e-mail or header.
3. Press [▲ / ▼] to view other pages in the e-mail.
Press and hold [▲ / ▼] to move to the first or last page in the e-mail.
4. Press [*] or [#] to view the next or previous e-mail.

Using e-mail options

While viewing the e-mail or header, press <**Options**> to access the following options:

- **Retrieve:** retrieve the body of the e-mail from the e-mail server.
- **View/Play:** view or play the selected file.
- **Save to My files/Save:** save the selected file.
- **Reply:** send a reply to the sender via e-mail or MMS.
- **Reply to all:** send a reply to the sender and all of the other recipients.
- **Forward:** forward the e-mail to other people.
- **Delete:** delete the e-mail from the phone's memory or from both the phone's memory and the e-mail server.
- **Add to block list:** add the sender's e-mail address or subjects to the Block list.
- **Cut address:** extract URL addresses, e-mail addresses, and phone numbers.
- **Attached items:** save the selected attachment or all attachments from the e-mail to your phone's memory.
- **Print via Bluetooth:** print the e-mail by connecting the phone to a printer via Bluetooth.

Some printers may not be compatible with the phone.

- **Lock/Unlock:** lock the e-mail to prevent it from being deleted, or unlock the e-mail.
- **Details:** access the e-mail properties.

My folder *(Menu 5.2.6)*

Use this menu to view the messages you have moved to this folder using the **Move to my folder** option while viewing a message list.

Templates *(Menu 5.3)*

Use this menu to make and use templates of frequently used messages.

Text template *(Menu 5.3.1)*

You can create SMS templates with the sentences you use frequently so that you can retrieve and insert them when composing an SMS message.

Creating a template

1. Select an empty location.

2. Enter a message and press [ok/↵].

Using template options

From the template list, press <**Options**> to access the following options:

- **Edit:** edit the template.
- **Send:** create and send a new message.
- **Delete:** delete the selected template.

Multimedia message templates *(Menu 5.3.2)*

You can access embedded MMS templates or ones you have saved so that you can use them in composing an MMS message.

Creating a template

1. Press <**Options**> and select **Add new**.
2. Create a template as you would when creating an MMS message.
3. Press <**Options**> and select **Save in** → **Templates**.

Using template options

From the template list, press <**Options**> to access the following options:

- **View:** open the selected template.
- **Send:** create and send a new message.
- **Edit:** edit the selected template.
- **Add new:** add a new template.
- **Delete:** delete the selected template or all templates. You cannot delete the embedded templates.

Delete all (Menu 5.4)

Use this menu to delete all messages in each message type at once.

1. Press [**OK/✓**] to select the message folders you want.
2. Press <**Delete**>.
3. Press <**Yes**> to confirm the deletion.

Settings (Menu 5.5)

Use this menu to set up various options for using the messaging services.

Text messages (Menu 5.5.1)

You can configure SMS settings.

- **Sending options:** set up the options for sending SMS messages:
 - Reply path:** allow recipients to reply to you through your SMS server.
 - Request delivery receipt:** set the network to inform you when messages have been delivered.
 - Validity period:** set the length of time your messages are stored in the SMS server.
 - Message type:** set the default message type. The network can convert messages into the selected format.
 - Service centre:** store or change the number of SMS server.
- **Receiving options:** activate 3D view mode for displaying received messages. The phone will convert message text to 3D vivid graphics. This

option is available only when the message consists of a single page.

- **Block number:** set the Block number list to reject SMS messages from specific phone numbers. Numbers specified here are also included in the MMS Block number list.

Multimedia messages (Menu 5.5.2)

You can configure MMS settings.

- **Sending options:** set up the options for sending MMS messages:
 - Request delivery receipt:** set the network to inform you when your messages have been delivered.
 - Address hiding:** set your address to be hidden from the recipient's phone.
 - Request read receipt:** send a read-reply request along with your messages.
 - Priority:** set the priority level of your messages.
 - Expiry:** set the length of time your messages are stored in the MMS server.

Delivery time: set a time delay before messages are sent.

- **Receiving options:** set up the options for receiving MMS messages:

Anonymous reject: reject messages from unknown senders.

Advert allowed: accept advertisements.

Report allowed: set the network to inform the sender when a message has been delivered to you.

Home network: determine if your phone retrieves new messages automatically when you are in your home service area.

Network when abroad: determine if your phone retrieves new messages automatically when you are roaming on another network.

Reception within home network or abroad has the following options:

- **Automatic:** the phone automatically retrieves messages from the server.
- **Reject:** the phone rejects all messages.

- **Manual:** the phone displays notifications. Use the **Retrieve** option to manually download new messages.
- **Multimedia message profile:** set up an MMS profile and select a profile to be used.
Current profile: select a profile.
Profile settings: configure MMS profiles using different MMS servers:
 - **Profile name:** assign a name to the MMS profile.
 - **Server URL:** enter the address of your MMS server.
 - **Proxy:** connect to the GPRS network using the proxy server.
 - **GPRS settings:** customise the settings required for connecting to the GPRS network.
*when the proxy is set to **Enable**:*
IP address: enter the gateway address.
Port: enter the port number.
APN: enter the access point name used for the address of the GPRS network.

Login ID: enter the user ID.

Password: enter the password.

*when the proxy is set to **Disable**:*

DNS1: enter the primary address.

DNS2: enter the secondary address.

APN: enter the access point name used for the address of the GPRS network.

Login ID: enter the user ID.

Password: enter the password.

- **Version:** select an available OMA version and maximum size limit for sending or receiving messages.

☒ Depending on your service provider, it may not be possible to support the maximum limit 300KB. In this case, try again after changing the setting to 100KB.

- **Block number:** set the Block number list to reject MMS messages from specific phone numbers.

Numbers specified here are also included in the SMS Block number list.

- **Message class:** select the type of message content you will add or the message size.

Text only: you can add only text of up to 30 KB.

Small imaging: you can add any type of item, except for video, of up to 30 KB.

Moderate imaging: you can add any type of item, except for video, of up to 100 KB.

Small video: you can add any type of item of up to 100 KB.

Moderate video: you can add any type of items of up to 300 KB.

- **Creation mode:** select an MMS creation mode.

Warning: you can create a message with any type of content and of any size, but the phone will inform you when the content and size have exceeded the maximum.

Free: you can create a message with any type of contents and of any size.

Restricted: you can create a message with the type of content and size specified in **Message class**.

Emails *(Menu 5.5.3)*

You can configure e-mails settings.

- ☒ You cannot change e-mail profile and account settings while an e-mail is being sent or retrieved.

- **Sending options:** set up the options for sending e-mails:

Send copy to self: send a copy of your e-mail to your e-mail account.

Request delivery receipt: set the network to inform you when e-mails have been delivered.

Request read receipt: send a read-reply request for a reply along with e-mails.

Priority: select the priority level of your e-mail.

Add signature: attach your name, phone number, or a simple memo to e-mails.

Edit name: edit the name in your signature.

Edit telephone number: edit the phone number in your signature.

Edit note: edit the tag line in your signature.

- **Receiving options:** set up the options for receiving e-mails:

Check interval: determine how often the phone checks the server for incoming e-mails.

If you select **Not used**, you can use the Check new mail feature to check your e-mail manually.

Send read receipt: determine whether or not the phone sends a read-reply for incoming e-mails. If you select **Announce**, the phone asks you to send a read-reply.

Retrieve option: set whether the phone downloads e-mail headers only or e-mail headers and bodies both.

Delete option: determine whether e-mails are deleted immediately or the next time you connect to the server.

Download limit: determine the maximum size for incoming e-mails. Your phone will reject e-mails that exceed the specified size.

Keep in server: leave the copies of e-mails in the server after retrieving.

- **Email accounts:** set up an e-mail account and select an account to be used:

Current account: select an account.

Account settings: configure e-mail accounts using different e-mail servers. Press <**Create**>, or press <**Options**> and select **Create**, if one has already been saved.

- **In use:** select this option to use the account and to display the account in **Email inbox**.
- **Account name:** enter a name for the currently selected account.

To access the following options, press <**Options**> and select **Next**.

- **User name:** enter a user name.
- **Email address:** enter your e-mail address.
- **Reply address:** enter your e-mail address to be used when the recipient sends a reply.

To access the following options, press <**Options**> and select **Next**.

- **SMTP server:** enter the IP address or host name of the outgoing e-mail server.
- **SMTP port:** enter the SMTP port number.
- **SMTP user ID:** enter the SMTP user name.
- **SMTP password:** enter the SMTP password.
- **Secure connection (SMTP):** use a secure connection for the e-mail service.
- **Retrieve server type:** select the protocol for the incoming e-mail server. The remaining options depend on the protocol type setting.

*When the protocol type is **POP3**:*

- **POP3 server:** enter the IP address or host name of the server that receives your e-mail.
- **POP3 port:** enter the POP3 port number.
- **Same ID and password:** select if you want to have the same user ID and password with the outgoing e-mail server.
- **POP3 user ID:** enter the POP3 user name.
- **POP3 password:** enter the POP3 password.

- **APOP login:** connect to the server by using the APOP login scheme when this option is selected.
- **Secure connection (POP3):** use a secure connection for the e-mail service.

*When the protocol type is **IMAP4**:*

- **IMAP4 server:** enter the IP address or host name of the server that receives your e-mail.
- **IMAP4 port:** enter the IMAP4 port number.
- **Same ID and password:** select if you want to have the same user ID and password with the outgoing e-mail server.
- **IMAP4 user ID:** enter the IMAP4 user name.
- **IMAP4 password:** enter the IMAP4 password.
- **Secure connection (IMAP4):** use a secure connection for the e-mail service.
- **Include attachments:** select this option to receive attachments with e-mails.
- **Email retrieval limit:** set the number of headers you will retrieve from the server.
- **Email profiles:** set up an e-mail profile and select a profile to be used.

Current profile: select a profile.

Profile settings: configure e-mail profiles using different e-mail servers. Set the options for each profile:

- **Profile name:** enter a name for the e-mail profile.
- **APN:** enter the access point name used for the GPRS network address.
- **Login ID:** enter the user ID.
- **Password:** enter the password.
- **DNS1:** enter the primary address.
- **DNS2:** enter the secondary address.
- **Block list:** specify e-mail addresses or subjects you want to reject.

Push messages (Menu 5.5.4)

You can change the settings for receiving push messages from the wireless web server.

- **Receive:** set how your phone receives push messages.



- **Service centre:** enter the address of the server from which you want to receive push messages, when the **Receive** option is set to **Text message-C specific**.

SOS message (Menu 5.6)

In an emergency, you can send SOS messages to your family or friends for help. You can also receive SOS messages from other people who are in an emergency. Use this menu to specify options for sending and receiving SOS messages.

- **Message sending:** activate or deactivate the SOS message feature. To send an SOS message, press [Volume] 4 times in Idle mode, with the phone closed.



While the phone is attempting to send an SOS message, the  icon turns to red and you cannot access menu functions. To use the phone as normal, press [] when the icon turns to blue.

Menu functions

- **Recipients:** specify the phone numbers to which you want to send SOS messages.
- **Repeat sending:** set the number of times the phone repeats sending SOS messages.
- **Incoming SOS alert:** set whether or not the phone uses the preset alert type (siren and alert message) for incoming SOS messages. If you select **No**, the phone uses the message ringer setting.
- **Text:** check the preset SOS message text.

Broadcast messages *(Menu 5.7)*

The broadcast service delivers short messages on various topics such as the weather or traffic.

Use this menu to change the settings for the service and to access broadcast messages.

- **Read:** open received messages.
All broadcast messages are stored in the **Temporary** folder and will be deleted when you turn the phone off. If you do not want a message

to be deleted, save it to the **Archive** folder. While viewing the message, press <**Options**> and select **Save**.

- **Activation:** enable or disable the reception of broadcast messages.
- **Receiving channels:** specify the channels from which you receive broadcast messages.
- **Language:** select the languages in which broadcast messages display.

Please contact your service provider for details.

Memory status *(Menu 5.8)*

Use this menu to view the memory status for text, multimedia, e-mail, or push messages.

You can also access a message folder by selecting it from this menu.

My files *(Menu 6)*

The **My files** menu allows you to access images, videos, voice memos, music files, sounds, and other files stored in the phone's memory or on a memory card.

To access this menu, press <**Menu**> in Idle mode and select **My files**.

Images *(Menu 6.1)*

This menu displays photos you have taken and images you have downloaded, received in messages, or imported from your computer.

Viewing an image

1. Select an image folder.
2. Select an image.

Viewing a slide show

You can view your images as a slide show, a sequential presentation of each image in the current folder.

1. Select an image folder.

2. While viewing an image, press <**Options**> and select **Slide show**.
3. Select a time interval. The slide show begins.
4. Press <**Back**> to stop the slide show.

Using image options

While viewing an image, press <**Options**> to access the following options:

- **List**: return to the image list.
- **Full screen view/Normal view**: change the view mode.
- **Send via**: send the file via MMS, e-mail, or Bluetooth.
- **Set as**: set the file as your wallpaper or as a caller ID image for a Phonebook entry.
- **Edit**: edit the image using the Image editor if it is a photo taken by the camera on the phone.
▶ p. 47
- **Move to**: move the file to another folder or a memory card, if inserted.

Menu functions

- **Copy to card:** copy the selected file or all files to a memory card, if inserted.
- **Delete:** delete the selected file.
- **Rename:** change the file name.
- **Slide show:** view all image as a slide show.
- **Bluetooth visibility:** share the file with other Bluetooth devices.
- **Print via:** print the image by connecting the phone to a printer via Bluetooth or USB.



- To print via USB, you first need to set the USB mode to **Pictbridge**. ► p. 98
- Some printers may not be compatible with the phone.

- **Lock/Unlock:** lock the file to prevent it from being deleted, or unlock the file.
- **Details:** access the file properties.

Videos (Menu 6.2)

This menu displays video clips you have recorded, downloaded, or received in messages, or imported from your computer.



Video clips recorded on other devices, such as camcorders, may not play correctly.


Playing a video clip

1. Select a video folder.
2. Select a video clip.

During playback, use the following keys:

Key	Function
OK/ i	Pauses or resumes playback.
Up	Opens the file list.
Left	Moves back to the previous file. Moves backward in a file when held down.
Right	Skips to the next file. Skips forward in a file when held down.

Key	Function
▲/▼	Adjusts the volume.
Down	Stops playback.

After playback, press <  > to access the following options:

- **Play:** play the selected file.
- **Send via:** send the selected file via MMS, e-mail, or Bluetooth.
- **Set as caller image:** set the file as a caller ID image for a Phonebook entry.
- **Move to:** move the file to another folder or a memory card, if inserted.
- **Copy to card:** copy the file to a memory card, if inserted.
- **Delete:** delete the file.
- **Rename:** change the file name.
- **Bluetooth visibility:** share the selected file with other Bluetooth devices.

- **Lock/Unlock:** lock the file to prevent it from being deleted, or unlock the file.
- **Details:** access the file properties.

Music *(Menu 6.3)*

This menu displays music files you have downloaded, or imported from your computer. From Sonic wellness, you can select relaxing theme music files.

1. Select a folder.
2. Select a file. The selected file plays. For music files, the music player opens. ► p. 43

Sounds *(Menu 6.4)*

This menu displays the voice memos you have recorded, and sound files you have downloaded, received in messages, or imported from your computer.

Playing a sound clip

1. Select a sound folder.
2. Select a sound clip. For a voice memo, see **Voice recorder**. ► p. 46

While playing a sound clip, press <**Options**> to access the following options:

- **List:** return to the sound list.
- **Send via:** send the selected file via MMS, e-mail, or Bluetooth.
- **Set as:** set the file as your ringtone, as a ringtone for a Phonebook entry, or as a ringtone for alarms.
- **Move to:** move the file to another folder or a memory card, if inserted.
- **Copy to card:** copy the file to a memory card, if inserted.
- **Delete:** delete the file.
- **Rename:** change the file name.
- **Bluetooth visibility:** share the selected file or the files you want with other Bluetooth devices.
- **Lock/Unlock:** lock the file to prevent it from being deleted, or unlock the file.
- **Details:** access the file properties.

Other files (Menu 6.5)

Use this menu to view, without corruption, various document files and files stored in the phone's memory, or a memory card. Available file formats are *.doc, *.pdf, *.txt, and so on.

Viewing a file

1. Select a file folder.
2. Select a file. The Pícsel File Viewer opens.

- ☒ • Depending on the file size or memory capacity of Pícsel File Viewer, some files may not open properly.
- If a document file contains languages unsupported by the Pícsel File Viewer, the content of the document will not display correctly.


Use the following keys to view the document:

Key	Function
▲ / ▼	Zooms in or out.
Up/Down	Scrolls through pages.

Key	Function
Left/Right	Pans around the page.
OK/ <i>i</i>	Fits the document to the page size.
1	Searches backward through the document for the word entered in the Start searching option.
2	Returns to the first page.
3	Searches forward through the document for the word entered in the Start searching option.
4	Goes to the previous page.
5	Rotates the page.
6	Goes to the next page.
7	Changes the view mode to the screen width.
8	Moves to the last page.

Key	Function
9	Changes the view mode to the screen height.
#	Changes the view mode.

Using document options

While viewing a document, press <**Options**> or < > to access the following options:

- **Full screen view/Normal view:** change the view mode.
- **Zoom:** zoom in or out.
- **Fit to:** fit the document to the page size, screen width, or screen height.
- **Rotate:** rotate the document.
- **Go to:** move to another page of the document.
- **Start searching/Stop searching:** activate or deactivate search mode. You can search for a specific word in the document by entering the word.

Menu functions

- **Send via:** send the file via MMS, e-mail, or Bluetooth.
- **Print via:** print the image by connecting the phone to a printer via Bluetooth or USB.
 - ☒ • To print via USB, you first need to set the USB mode to **Pictbridge**. ► p. 98
 - Some Bluetooth-enabled printers may not be compatible with the phone.
- **Move to card:** move the selected file to a memory card.
- **Copy to card:** copy the selected file to a memory card.
- **Delete:** delete the selected file.
- **Rename:** change the file name.
- **Bluetooth visibility:** share the file with other Bluetooth devices.
- **Lock/Unlock:** lock the file to prevent it from being deleted, or unlock the file.
- **Details:** access the file properties.
- **Settings:** change the settings for viewing a document.

Panning...: change the panning mode.

Map on: display or hide a map of the current page.

Controller: hide or display the shortcut tool bar in Full screen view.

- **Shortcuts:** view the functions of the keys you can use in Picsel File Viewer.

Memory card (Menu 6.6)

Use this menu to access the files stored on a memory card. This menu is shown only when a memory card is inserted into the phone.

- ☒ • Your phone is preset to use FAT16-formatted memory cards. If you insert a FAT32-formatted memory card, the phone will ask you to reformat the memory card. If you do not, you will not be able to access the card from the phone.
- If a folder on a memory card has subfolders which exceed the maximum folder depth supported by your phone's file system, you may not open or delete the maximum depth subfolders on the phone.

Memory status *(Menu 6.7)*

You can check the total amount of memory for media items and the amount of memory currently in use in each media box. You can also access a media box by selecting it from this menu.

Planner *(Menu 7)*

Use this menu to keep track of your schedule. You can also use convenient features, such as an alarm clock, calendar, memo pad, world clock, calculator, converter, timer, and stopwatch.

To access this menu, press <**Menu**> in Idle mode and select **Planner**.

Alarm *(Menu 7.1)*

Use this menu to set alarms. The alert type for a normal alarm corresponds to the call alert type settings. A wake up alarm is not affected by your sound settings.

Setting an alarm

1. Select the type of alarm.
2. Select an alarm option.
 - **Alarm**: activate the alarm.
 - **Alarm time**: enter the time for the alarm to ring.
 - **AM/PM**: set **AM** or **PM** in 12-hour time format.
 - **Alarm day**: check the days for the alarm.
 - **Alarm tone**: select an alarm tone.
3. Press <**Save**>.

Stopping an alarm

- For an alarm, press any key.
- For a wake-up alarm, press <**Confirm**> or [OK/⏏]. Press any key, except for <**Confirm**> and [OK/⏏], to cause it to sound again after 5 minutes. You can do this a maximum of 5 times.

Deactivating an alarm

1. Select the alarm you want to deactivate.

2. Select **Off** on the **Alarm** lines.

Setting alarms to sound when the phone is off

From the Alarm screen, select **Auto power-up** → **On**.

If the phone is off when it is time for the alarm to sound, the phone switches on and sounds the alarm.

Calendar (Menu 7.2)

Use this menu to keep track of your monthly schedule.

Selecting a day on the calendar

When you access the **Calendar** menu, the calendar in Month view appears with today's date indicated by a grey box.

- Press [Left] or [Right] to move by day.
- Press [Up] or [Down] to move by week.
- Press [▲/▼] to move by month.

Creating an item

You can store appointments, anniversaries, tasks, and miscellaneous items on the calendar. More than one item per day can be stored.

Entering an appointment or a miscellaneous item

1. Select a date on the calendar.
2. Press <**Options**> and select **Create** → **Appointment** or **Miscellany**.
3. Enter information or change the settings:
 - **Subject**: enter a title for the item.
 - **Details**: enter item details.
 - **Start date** and **Start time**: enter the starting date and time for the item.
 - **AM/PM**: select **AM** or **PM** in 12-hour time format.
 - **End date** and **End time**: enter the ending date and time for the item.
 - **AM/PM**: select **AM** or **PM** in 12-hour time format.
 - **Location**: (for **Appointment**) enter information about the appointed location.
 - **Alarm**: select to set an alarm for the item.
 - **before**: set how long before the item the alarm is to alert you.
 - **Alarm tone**: select an alarm tone.

- **Repeat:** (for **Appointment**) select to set the item to recur.
- **until:** (for **Appointment**) select a repeat unit and set the date to end repeating.

4. Press <**Save**> to save the item.

Entering an anniversary

1. Select a date on the calendar.
2. Press <**Options**> and select **Create** → **Anniversary**.
3. Enter information or change the settings:
 - **Occasion:** enter information about the anniversary.
 - **Date:** enter the date.
 - **Alarm:** select to set an alarm for the anniversary.
 - **before:** set how long before the anniversary the alarm is to alert you.
 - **Alarm time:** enter the time for the alarm to ring.
 - **AM/PM:** select **AM** or **PM** in 12-hour time format.

- **Alarm tone:** select an alarm tone.
- **Repeat every year:** set the phone to remind you of the anniversary every year.


4. Press <**Save**> to save the anniversary.

Entering a task

1. Select a date on the calendar.
2. Press <**Options**> and select **Create** → **Task**.
3. Enter information or change the settings:
 - **Task:** enter information about the task.
 - **Start date:** enter the starting date.
 - **Due date:** enter the ending date.
 - **Priority:** select a priority level.
 - **Alarm:** select to set an alarm for the task.
 - **before:** set how long before the task the alarm is to alert you.
 - **Alarm time:** enter the time for the alarm to ring.
 - **AM/PM:** select **AM** or **PM** in 12-hour time format.
 - **Alarm tone:** select an alarm tone.
4. Press <**Save**> to save the task.

Consulting the calendar

Once you have created items, the item icons and the number of items for a specific day appears at the bottom of the calendar.

-  Appointments
-  Tasks
-  Anniversaries
-  Miscellaneous items

Viewing an item

1. Select a date on the calendar to display the items for that day.
2. Select an item to view its details.
3. Press [Left] or [Right] to access the other items scheduled for the selected day.

While viewing an item, press <**Options**> to access the following options:

- **Edit**: edit the item.
- **Create**: add a new item.
- **Send via**: send the item via SMS, MMS, e-mail, or Bluetooth.
- **View by**: change the view mode of the calendar.

- **Done/Not done**: change the status of the task.
- **Delete**: delete the item.
- **Print via Bluetooth**: print the item details by connecting the phone to a printer via Bluetooth. Some printers may not be compatible with the phone.

Using calendar options

On the calendar, press <**Options**> to access the following options:

- **View by**: change the view mode of the calendar.
- **Create**: add a new item.
- **Go to**: select today's date or enter a specific date.
- **Event list**: sort items by type of item.
- **Delete**: delete items stored on the calendar by using various deleting options.
- **Settings**: change the default settings for the calendar.

Starting day: select which day of the week the calendar starts with.

Default view by: select the default calendar view mode.





- **Missed alarm events:** access items whose alarms you have missed.
- **Memory status:** access the memory information for the items stored on the calendar.

Viewing items in a different mode

You can change the calendar display to Day view or Week view. Press <**Options**> and select **View by** → a view mode.

Day view

You can view items for the selected date. The following icons will be displayed according to the items type and status:

-  Alarm set
-  Recurring item
-  Completed task
-  Task priority (Orange: high, Light blue: normal, and Grey: low)

Select an item to view its details.

Week view

You can view items for the selected week. A cell on the timetable indicates the presence of item information. Blue boxes indicate scheduled items, and green boxes indicate miscellaneous items.

Select the cell that contains the item you want.

Memo *(Menu 7.3)*

You can create a list of memos.

Creating a memo

1. Press <**Options**> and select **Create**.
2. Enter the memo contents.
3. Press <**Options**> and select **Save**.

Viewing a memo

Select a memo from the list.

Using memo options

From the memo list, press <**Options**> to access the following options:

- **View:** access the selected memo.

Menu functions

- **Create:** add a new memo.
- **Send via:** send the memo via SMS, MMS, e-mail, or Bluetooth.
- **Delete:** delete the selected memo or all memos.
- **Memory status:** check the number of memos stored in the phone's memory.

World clock (Menu 7.4)

Use this menu to find out the current time in another part of the world.

Viewing world time

1. From the world map, press [Left] or [Right] to scroll to the city you want on the upper or lower line. As the time line moves, the time and date of the given zone display.
2. Press [OK/⏏] to save the time zone.

Applying daylight saving time

1. From the world map, press <Options> and select **Apply daylight saving time**.

2. Press [OK/⏏] to check the time zones you want.
3. Press <Save>.

Calculator (Menu 7.5)

Use this menu to perform basic arithmetic functions such as addition, subtraction, multiplication, and division.

1. Enter the first number.
 - Press [×] to insert a decimal point.
 - Press [#] to insert a bracket.
 - Press [▲/▼] to move the cursor.
 - Press <Options> to use additional arithmetic functions or switch to the Converter screen.
2. Enter the operation for your calculation by pressing the Navigation keys.
3. Enter the second number.
4. Press [OK/⏏] to view the result.
5. If necessary, repeat from step 2 to continue the calculation.

Converter *(Menu 7.6)*

Use this menu for common conversions, such as length and temperature.

Performing a conversion

1. Select the converter type you want.
2. Press [Left] or [Right] to select the original unit and press [Down].
3. Enter the value to be converted and press [Down].
 - Press [\ast] to insert a decimal point.
 - Press [#] to change the temperature to above zero or below zero (-).
4. Press [Left] or [Right] to select the unit to which you want to convert.

The equivalent value for the amount you entered displays.

Using converter options

Press <Options> to access the following options:

- **Clear:** clear the current values.
- **Reverse:** reverse the conversion.

Timer *(Menu 7.7)*

Use this menu to set a period of time for the phone to count down. The phone sounds an alarm when the specified period of time expires.

Starting the timer

1. Press <Set>.
2. Enter the length of time you want to count down and press <OK>.
3. Press [OK/⏏] to start counting down.

Stopping the timer

- Press any key to stop the timer when it sounds.
- Press [OK/⏏] on the Timer screen to stop the timer before it sounds.

Stopwatch *(Menu 7.8)*


Use this menu to measure elapsed time. The maximum time is 10 hours.

1. Press [OK/⏏] to start the stopwatch.
2. Press [OK/⏏] to select an interval. You can repeat this step for a total of 4 intervals.

3. To reset the stopwatch, press **<Reset>**.

Camera (Menu 8)

You can use the camera module embedded in your phone to take photos and record videos.

To access this menu, press **<Menu>** in Idle mode and select **Camera** or press [.




- ✓ • Do not take photos of people without their permission.
- Do not take photos in a place where cameras are not allowed.
- Do not take photos in a place where you may interfere with another person's privacy.


Take a photo (Menu 8.1)

The camera produces JPEG photos.

- ✓ When you take a photo in direct sunlight or in bright conditions, shadows may appear on the photo.

Taking a photo

1. Access the **Take a photo** menu to turn on the camera and switch the display to Capture mode. You can also press and hold [] in Idle mode.
2. Make any desired adjustments.
 - Press **<Options>** to use the camera options. ▶ next section
 - Use the keypad to change the camera settings or switch to other modes. ▶ p. 90
3. Press [] or [] to take a photo. The photo is saved in the **My photos** folder.

To	Press
use photo options	<Options> . ▶ p. 91
send the photo via MMS, e-mail, or Bluetooth	[].
delete the photo	[C] and then <Yes> .
return to Capture mode	<Back> .

Using camera options in Capture mode

In Capture mode, press <  > to access the following options:

- **Record video:** switch to Record mode.
- **Shooting mode:** take a photo in the following modes:
 - Single shot:** take a photo in Normal mode. You can select whether or not the camera automatically saves a photo.
 - Multi shot:** take a series of action stills. You can select the number of photos the camera will take and the shooting speed.
 - Mosaic shot:** take several stills and save them in one frame. You can select the layout.
- **Effects:** change the colour tone or apply a special effect.
- **Frames:** apply a decorative frame.
- **Flash:** determine the use of the flash.

- **Timer:** set a time delay before the camera takes a photo.
- **Go to My photos:** access the **My photos** folder.
- **Camera settings:** change the default settings for taking a photo.

Photo settings: change the following image settings:

- **Size:** select an image size.
- **Quality:** select an image quality.
- **Viewfinder mode:** select a preview mode.
- **Focus mode:** select a focus mode.
- **Scene program:** set whether or not to use Night shot mode.
- **Exposure metering:** select a method to determine the exposure of an image, based on a specific area of the image.
- **White balance:** adjust the colour balance of the photo. You can make your photo appear warmer or cooler.

- **ISO**: change the ISO setting, which controls the sensitivity of your camera. For low light situations, select a higher ISO number. The higher the ISO number, the faster the camera shutter functions and the more sensitive the camera is to light. Higher ISO settings may bring some distortion to an image.

Preferences: change the following camera settings:

- **Shutter sound**: select the sound that you hear when you press the shutter.
- **Zoom sound**: turn the sound effect for zooming on or off.
- **Brightness sound**: turn the sound effect for brightness adjustment on or off.
- **Default name**: change the default prefix of file names.
- **Camera shortcuts**: view the functions of the keys you can use in Capture mode.

Using the keypad in Capture mode

You can use the keypad to customise your camera settings in Capture mode.

Key	Function
▲	Flips the image vertically.
▼	Shows the mirror image.
Left/Right	Adjusts the brightness.
Up/Down	Zooms in or out.
1	Switches to Record mode. ► p. 92
2	Changes the image size.
3	Changes the image quality.
4	Changes the shooting mode.
5	Changes the colour tone or applies a special effect.
6	Changes the white balance setting.
7	Selects a decorative frame.

Key	Function
8	Sets the timer.
9	Changes the focus mode.
*	Determines the use of the flash.
0	Goes to the My photos folder. ▶ p. 75
#	Changes the preview mode.

Using photo options

After saving a photo, press <**Options**> to access the following options:

- **Send via:** send the file via MMS, e-mail, or Bluetooth.
- **Viewfinder:** return to Capture mode.
- **View:** access one of the multi-shot photos.
- **Set as:** set the photo as your wallpaper or as a caller ID image for a Phonebook entry.



- **Edit:** edit the image using the Image editor.
▶ p. 47
- **Delete:** delete the file.
- **Multi shot delete all:** delete the multi-shot photos you want.
- **Rename:** change the file name.
- **Go to My photos:** access the **My photos** folder.
- **Bluetooth visibility:** share the selected file or the files you want with other Bluetooth devices.
- **Print via:** print the image by connecting the phone to a printer via Bluetooth or USB.



- ☒ To print via USB, you first need to set the USB mode to **Pictbridge**. ▶ p. 98
 - Some printers may not be compatible with the phone.
- **Lock/Unlock:** lock the file to prevent it from being deleted, or unlock the file.
- **Details:** access the file properties.

Record video (Menu 8.2)

You can record a video of what is displayed on the camera screen and save it.

Recording a video

1. Access the **Record video** menu to turn on the camera and switch the display to Record mode.
2. Make any desired adjustments.
 - Press <  > to use the camera options.
▶ next section
 - Use the keypad to change the camera settings or switch to other modes. ▶ p. 93
3. Press [OK/⏏] or [⏏] to start recording.
4. Press <  > or [⏏] to stop recording. The video is saved in the **My video clips** folder.

5. To	Press
play back the video clip	[OK/⏏].
use video options	<  >. ▶ p. 94
delete the video	[C] and then <Yes>.
return to Record mode	<  >.

Using camera options in Record mode

In Record mode, press <  > to access the following options:

- **Take a photo**: switch to Capture mode.
- **Effects**: change the colour tone or apply a special effect.
- **Flash**: determine the use of the flash.
- **Timer**: set a time delay before the camera starts recording a video.
- **Go to My video clips**: access the **My video clips** folder.
- **Camcorder settings**: change the following settings for recording a video:

Recording mode: select a video recording mode.

Select **Limit for multimedia messages** or **Limit for emails** to record a video suitable for an MMS message or e-mail. The video clip is saved in 3gp file format.

Select **Normal** to record a video within the limit of the currently available memory. The video clip is saved in mp4 file format.

Size: select a frame size.

Quality: select an image quality.

Viewfinder mode: select a preview mode.

Record audio: record a video with audio.

White balance: adjust the colour balance of the image. You can make your video appear warmer or cooler.

Scene program: set whether or not to use Night shot mode.

Zoom sound: turn the sound effect for zooming on or off.

Brightness sound: turn the sound effect for brightness adjustment on or off.

Default name: change the default prefix of file names.

- **Camcorder shortcuts:** view the functions of the keys you can use in Record mode.


Using the keypad in Record mode

You can use the keypad to customise your camera settings in Record mode:

Key	Function
▲	Flips the image vertically.
▼	Shows the mirror image.
Left/Right	Adjusts the brightness.
Up/Down	Zooms in or out.
1	Switches to Capture mode. ► p. 88
2	Changes the frame size.
3	Changes the image quality.
4	Changes the video recording mode.
5	Changes the colour tone or applies a special effect.
6	Changes the white balance setting.
7	Mutes or unmutes the audio.

Key	Function
8	Sets the timer.
*	Determines the use of the flash.
0	Goes to the My video clips folder. ▶ p. 76
#	Changes the preview mode.

Using video options

After saving a video clip, press <  > to access the following options:

- **Viewfinder:** return Record mode.
- **Send via:** send the file via MMS, e-mail, Bluetooth.
- **Set as caller image:** set the file as a caller ID image for a Phonebook entry.
- **Delete:** delete the file.
- **Rename:** change the file name.
- **Go to My video clips:** access the **My video clips** folder.

- **Bluetooth visibility:** share the file with other Bluetooth devices.
- **Lock/Unlock:** lock the file to prevent it from being deleted, unlock the file.
- **Details:** access the file properties.

Go to My photos *(Menu 8.3)*

Use this menu to access a list of photos you have taken. ▶ p. 75

Go to My video clips *(Menu 8.4)*

Use this menu to access a list of videos you have recorded. ▶ p. 76

Settings *(Menu 9)*

The **Settings** menu provides you with various setting options to customise the phone to your preferences and needs. You can also reset the settings to their default values.

To access this menu, press <Menu> in Idle mode and select **Settings**.

Time and date *(Menu 9.1)*

Use this menu to set the current time and date on your phone.

- **Home zone:** set the home time zone. Select the city that corresponds to your home zone. To set the daylight saving time, select **Set daylight saving time**.
- **Time:** enter the current time.
- **AM/PM:** select **AM** or **PM** in 12-hour time format.
- **Time format:** select a time format.
- **Date:** enter the current date.
- **Date format:** select a date format.
- **Auto update:** activate the auto time update feature. Your phone will read the MCC (Mobile Country Code) from the network and automatically

update the current time for the country that you are in when you travel abroad.



Time information may not be updated when you move to one time zone to another within a country.

Phone settings *(Menu 9.2)*

Many different features of your phone's system can be customised to suit your preferences.

Language *(Menu 9.2.1)*

Use this menu to select the display language and select Mohu pinyin pairs.

- **Display:** select a display language.
- **Mohu pinyin:** select Mohu pinyin pairs so that you can easily enter characters that are similar in phonetic spelling.

Greeting message *(Menu 9.2.2)*

Use this menu to enter the greeting that is displayed briefly when the phone is switched on.

Menu functions

Slide settings (Menu 9.2.3)

Use this menu to set how the phone reacts when you open it for an incoming call, and when you close it while using a function.

- **Up:** set whether or not to answer a call by opening the phone.
- **Down:** set whether or not the phone maintains the menu you are using when you close the phone.

☒ When you set **Down** to **Continue operation**, the keypad lock works only in Idle mode.

Shortcuts (Menu 9.2.4)

You can use the Navigation keys as shortcut keys to access specific menus directly from Idle mode. Use this menu to assign a shortcut to a key.

Assigning a shortcut to a key

1. Select the key to be used as a shortcut key.
2. Select the menu that will be assigned to the key.

Using shortcut options

Press <**Options**> to access the following options:

- **Change:** assign or change a shortcut menu.

- **Remove:** deactivate the shortcut assignment to the selected key.
- **Remove all:** deactivate all shortcut assignments.

My menu (Menu 9.2.5)

You can set up a menu of your own using your favourite menu items, which can be easily accessed by pressing [Up] in Idle mode.

Setting up My menu items

1. Select an item to be changed.
2. Select the menu item you want.

Using item options

Press <**Options**> to access the following options:

- **Assign:** assign an item.
- **Change:** change the selected item.
- **Remove:** remove the selected item.
- **Remove all:** remove all items.

Advanced shortcuts (Menu 9.2.6)

Use this menu to activate the Advanced shortcut feature, which allows you to access the text message,

alarm, calendar, calculator, and converter applications from the dialling screen.

- ☒ This menu may not be available, depending on the font type on the dialling screen.

Launching menus by number

1. From the Advanced shortcuts screen, select **On** and press **<Save>**.
2. In Idle mode, enter the number for the action you want.

For example, enter time as 4-digit to set an alarm or date as 4-digits to enter your schedule.

3. Press one of the Navigation keys.

You can access the following applications by default:

- Up: **Alarm** ► p. 81
- Down: **Converter** ► p. 87
- Left: **Text message** ► p. 57
- Right: **Calendar** ► p. 82

Changing an Advanced shortcut key

1. From the Advanced shortcuts screen, press [Down] and select a key to be used as a shortcut key.
2. Select a menu to be assigned to the key.

Using Advanced shortcut options

Press **<Options>** to access the following options:

- **Change**: assign or change a shortcut menu.
- **Remove**: deactivate the shortcut assignment to the selected key.
- **Remove all**: deactivate all shortcut assignments.

Volume key *(Menu 9.2.7)*

Use this menu to change the volume key settings.

- **Volume key function**: set whether the phone mutes the call ringer or rejects a call if you press and hold [▲/▼] when a call comes in. You can also set whether the phone sends an SMS message to the caller when a call is rejected.
- **Text message**: enter a message to be sent to the caller when a call is rejected.

USB settings (Menu 9.2.8)

Use this menu to select a USB mode to be used when you connect your phone to a PC or printer via USB.

- **Modem:** select to use your phone as a modem.
- **Mass storage:** select to access a memory card, if a memory card is inserted.
- **Pictbridge:** select to connect your phone to a PictBridge-compatible printer.

Extra settings (Menu 9.2.9)

You can turn the automatic redialling or answering features on or off.

- **Auto redial:** set the phone to make up to ten attempts to redial a phone number after an unsuccessful call.
- **Anykey answer:** answer an incoming call by pressing any key, except for <Reject>, volume key or [📞].
- **Voice clarity:** remove extraneous noise and increase call quality so that the person with whom you are speaking can hear you clearly even if you are in a noisy place.

Offline mode (Menu 9.2.10)

Use this menu to switch the phone to Offline mode, or back to Online mode.

Display settings (Menu 9.3)

Use this menu to change settings for the display and light.

Wallpaper (Menu 9.3.1)

You can select a wallpaper type. The following options are available when the wallpaper type is set to

Normal.

- **Wallpaper:** select a background image in Idle mode.
- **Menu background:** set whether or not to display same background image in Menu mode.
- **Transparency:** adjust the transparency of the menu background image.

Main menu style (Menu 9.3.2)

You can select a display style for the main menu screen.

Text display (Menu 9.3.3)

You can change the display settings for the text displayed on the idle screen.

- **Text position:** select a position. If you do not want text to display in Idle mode, select **Off**.
- **Text style:** select a font style.
- **Text colour:** select a font colour.

Skin (Menu 9.3.4)

You can select a skin colour pattern for Menu mode.

Brightness (Menu 9.3.5)

You can adjust the brightness of the display for varying lighting conditions.

Dialling display (Menu 9.3.6)

Use this menu to select a font type, colour and size for the numbers entered and the background colour of the display while dialling.

Calendar (Menu 9.3.7)

Use this menu to display the calendar of the current month on the idle screen.



This menu may not be available, depending on the wallpaper setting.

Show caller ID (Menu 9.3.8)

Use this menu to set the phone to display missed call notifications with the most recently missed caller's information.

TV-out (Menu 9.3.9)

Use this menu to select a video system of your TV.

Sound settings (Menu 9.4)

Use this menu to customise various sound settings.

Incoming call (Menu 9.4.1)

Use this menu to select a volume level and alert type for incoming calls.

- **Alert type:** specify how you are to be informed of incoming calls.

Menu functions

- **Ring tone:** select a ringtone for the call ringer.
- **Volume:** select a ringer volume.

Keypad tone (Menu 9.4.2)

Use this menu to select the tone that the phone sounds when you press a key.

- ☒ • You can adjust the key tone volume using [▲ / ▼] in Idle mode.
- This menu may not be available, depending on the font type on the dialling screen.

Message tone (Menu 9.4.3)

Use this menu to set up the ringtone for incoming messages.

- **Alert type:** specify how you are informed when a message comes in.
- **Tone:** select one of the several message tones.
- **Repetition:** specify how often the phone informs you of a new message.

Power-on/off tone (Menu 9.4.4)

Use this menu to select the melody that the phone sounds when it is switched on or off.

Slide tone (Menu 9.4.5)

Use this menu to select the tone that the phone sounds when you open or close the phone.

On-time alarm (Menu 9.4.6)

Use this menu to set the phone to sound an alert every hour on the hour.

Silent mode (Menu 9.4.7)

Use this menu to set how the phone acts to alert you to a specific event in Silent mode.

Extra tones (Menu 9.4.8)

Use this menu to customise additional tones for the phone.

- **Minute minder:** set the phone to beep every minute during an outgoing call to keep you informed of the length of your call.

- **Connection tone:** set the phone to beep when an outgoing call is connected to the system.
- **Alerts on call:** set the phone to beep when you receive a new message or when the time for an alarm comes during a call.
- **Indicative tone:** set the phone to beep when a pop-up window displays.

Light settings *(Menu 9.5)*

Use this menu to change settings for the light.

Backlight time *(Menu 9.5.1)*

You can select the length of time the backlight or display stays on.

- **On:** select the length of time the backlight stays on.
- **Dim:** select the length of time the display stays on in Dim mode after the backlight turns off. After a specified time, the display turns off.
- **During charging:** set whether or not to activate Dim mode while charging your phone.

Keypad light *(Menu 9.5.2)*

You can set how the phone controls the use of the keypad light.

- **Any time:** the keypad light is always used.
- **Night time:** the keypad light is used only between 5:00 PM and 9:00 AM.
- **Custom time:** specify the time period that the keypad light is used.

Network services *(Menu 9.6)*

Use this menu to access network services. Please contact your service provider to check their availability and subscribe to them, if you wish.

Call diverting *(Menu 9.6.1)*

This network service reroutes incoming calls to a phone number that you specify.

1. Select a call diverting option:
 - **Divert always:** divert calls.
 - **Busy:** divert calls when you are on another call.

- **No reply:** divert calls when you do not answer the phone.
 - **Unreachable:** divert calls when you are not in your service area or when your phone is switched off.
 - **Cancel all:** cancel all call diverting options.
2. Select the type of calls to be diverted.
 3. Select **Activate**. To deactivate call diverting, select **Deactivate**.
 4. Move to the **Divert to** line.
 5. Enter the number to which calls are to be diverted and press <**Select**>.
 6. If you selected **No reply**, move to the **Sec** line and select the length of time the network delays before diverting a call.

Call barring (Menu 9.6.2)

This network service allows you to restrict your calls.

1. Select a call barring option:
 - **All outgoing:** prohibit outgoing calls.

- **International:** prohibit international calls.
 - **International except home:** only allow calls to numbers within the current country when you are abroad, and to your home country.
 - **All incoming:** prohibit incoming calls.
 - **Incoming while abroad:** prohibit incoming calls when you use your phone outside of your home service area.
 - **Cancel all:** cancel all call barring settings, allowing to be sent and received normally.
 - **Change barring password:** change the call barring password obtained from your service provider.
2. Select the type of calls to be barred.
 3. Select **Activate**. To deactivate call barring, select **Deactivate**.
 4. Enter the call barring password supplied by your service provider and press <**Select**>.

Call waiting *(Menu 9.6.3)*

This network service informs you when someone is trying to reach you while you are on another call.

1. Select the type of calls to which the call waiting option will apply.
2. Select **Activate**. To deactivate call waiting, select **Deactivate**.

Network selection *(Menu 9.6.4)*

This network service allows you to manually select the network to be used while roaming outside of your home area, or to let the network be chosen automatically. You can select a network other than your home network only if there is a valid roaming agreement between the two.

Caller ID *(Menu 9.6.5)*

This network service allows you to prevent your phone number from being displayed on the phone of the person being called. However, some networks do not allow the user to change this setting. If you select **Default**, the phone will use the default setting provided by the network.

Voice mail server *(Menu 9.6.6)*

Use this menu to store the number of the voicemail server and access your voicemails.



Your service provider can give you the voicemail server number.

- **Connect to voice server:** connect to the voicemail server to allow you to listen to your messages.
- **Voice server number:** enter the voicemail server number.

Band selection *(Menu 9.6.7)*

For the phone to make and receive phone calls, it must register with an available network.

Your phone can handle any of the following types of networks: Combined GSM 900/1800, Combined GSM 850/1900, and GSM 850/900/1800/1900.

The country where you purchased your phone determines the default band that it uses. When you travel abroad, you must remember to change to an appropriate band.

Security (Menu 9.7)

Use this menu to protect the phone against unauthorised use by managing the several access codes of your phone and SIM card.

- ✓ If you enter an incorrect PIN/PIN2 three times, the SIM card is blocked. To unblock it, you need to enter your PUK/PUK2 (Personal Unblocking Key). The codes are supplied by your network operator.

PIN check (Menu 9.7.1)

The 4- to 8-digit PIN (Personal Identification Number) protects your SIM card against unauthorised use. When this feature is enabled, the phone requires your PIN each time it is switched on.

Change PIN (Menu 9.7.2)

Use this menu to change your PIN. The PIN check feature must be enabled to use this feature.

Phone lock (Menu 9.7.3)

The Phone lock feature locks the phone from unauthorised use.

When this feature is enabled, you must enter a 4- to 8-digit phone password each time the phone is switched on.


The password is preset to **00000000**. To change the password, use the **Change password** menu.

Change password (Menu 9.7.4)

Use this menu to change your phone password.

Privacy (Menu 9.7.5)

Use this menu to lock access to call logs, Phonebook, or your media contents, including messages, media files, and document files.

1. Press [**OK/**- 2. Press **<Save>** to lock the marked items.
- 3. Enter the phone password and press **<OK>**.

To access a locked item, you need to enter the phone password.

SIM lock (Menu 9.7.6)

The SIM lock feature allows your phone to work only with the current SIM by assigning a SIM lock code. You must enter the SIM lock code to use a different SIM card.

FDN mode (Menu 9.7.7)

If supported by your SIM card, Fixed Dialling Number (FDN) mode restricts your outgoing calls to a limited set of phone numbers. When this feature is enabled, you can make calls only to phone numbers stored on the SIM card.

Change PIN2 (Menu 9.7.8)

If supported by your SIM card, the Change PIN2 feature changes your current PIN2.

Memory status (Menu 9.8)

Use this menu to check the amount of memory being used for storing data in Shared memory, Messages, My files, Calendar, Phonebook, JAVA world, and Memo.

Reset settings (Menu 9.9)

Use this menu to reset the phone settings, display settings, sound settings, and light settings individually.

1. Press [**OK**/**i**] to select the setting categories to be reset.
2. Press **<Reset>** to reset the marked items and then **<Yes>**.
3. Enter the phone password and press **<OK>**.

☒ The password is preset to **00000000**. You can change this password. ► p. 104

Solve problems

Help and personal needs

To save the time and expense of an unnecessary service call, perform the simple checks in this section before contacting a service professional.

When you switch on your phone, the following messages may appear:

"Insert SIM"

- Be sure that the SIM card is correctly installed.

"Phone lock"

- The automatic locking function has been enabled. You must enter the phone's password before you can use the phone.

"Enter PIN"

- You are using your phone for the first time. You must enter the PIN supplied with the SIM card.
- The PIN check feature is enabled. Every time the phone is switched on, the PIN has to be entered. To disable this feature, use the **PIN check** menu.


"Enter PUK"

- The PIN code has been entered incorrectly three times, and the SIM card is now blocked. Enter the PUK supplied by your service provider.


"No Service," "Network Failure," or "Not Done" displays

- The network connection has been lost. You may be in a weak signal area. Move and try again.
- You are trying to access an option for which you have no subscription with your service provider. Contact the service provider for further details.

You have entered a number but it was not dialled

- Be sure that you have pressed [].
- Be sure that you have accessed the right cellular network.
- Be sure that you have not set an outgoing call barring option.

Your correspondent cannot reach you

- Be sure that your phone is switched on. ([&] pressed for more than one second.)

- Be sure that you are accessing the correct cellular network.
- Be sure that you have not set an incoming call barring option.




Your correspondent cannot hear you speaking

- Be sure that you have switched off the microphone.
- Be sure that you are holding the phone close enough to your mouth. The microphone is located at the bottom of the phone.

The phone starts beeping and “Battery low” flashes on the display

- Your battery is insufficiently charged. Recharge the battery.

The audio quality of the call is poor

- Check the signal strength indicator on the display (). The number of bars indicates the signal strength from strong () to weak ().
- Try moving the phone slightly or moving closer to a window if you are in a building.

No number is dialled when you re-call a Contacts entry

- Use the **Contact list** feature to ensure the number has been stored correctly.
- Re-store the number, if necessary.

The battery does not charge properly or the phone sometimes turns itself off

- Wipe the charging contacts both on the phone and on the battery with a clean soft cloth.

If the above guidelines do not help you to solve the problem, take note of:

- The model and serial numbers of your phone
- Your warranty details
- A clear description of the problem

Then contact your local dealer or Samsung after-sales service.

Health and safety information

SAR certification information

This phone meets European Union (EU) requirements concerning exposure to radio waves.

Your mobile phone is a radio transmitter and receiver. It is designed and manufactured to not exceed the limits for exposure to radio-frequency (RF) energy, as recommended by the EU Council. These limits are part of comprehensive guidelines and establish permitted levels of RF energy for the general population. The guidelines were developed by independent scientific organisations through the periodic and thorough evaluation of scientific studies. The limits include a substantial safety margin designed to ensure the safety of all persons, regardless of age and health.

The exposure standard for mobile phones employs a unit of measurement known as Specific Absorption Rate (SAR). The SAR limit recommended by the EU Council is 2.0W/kg.¹

SAR tests are conducted using standard operating positions with the phone transmitting at its highest certified power level in all tested frequency bands. Although the SAR is determined at the highest certified power level, the actual SAR level of the phone while operating can be well below the maximum value. This is because the phone is designed to operate at multiple power levels so as to use only the power required to reach the network. In general, the closer you are to a base station, the lower the power output of the phone.

1. The SAR limit for mobile phones used by the public is 2.0 watts/kilogram (W/kg) averaged over ten grams of body tissue. The limit incorporates a substantial margin of safety to give additional protection for the public and to account for any variations in measurements. The SAR values may vary, depending on national reporting requirements and the network band.

Precautions when using batteries

- Never use a charger or battery that is damaged in any way.
- Use the battery only for its intended purpose.
- If you use the phone near the network's base station, it uses less power. Talk and standby time are greatly affected by the signal strength on the cellular network and the parameters set by the network operator.
- Battery charging time depends on the remaining battery charge, the type of battery, and the charger used. The battery can be charged and discharged hundreds of times, but it will gradually wear out. When the operation time is noticeably shorter than normal, it is time to buy a new battery.
- If left unused, a fully charged battery will discharge itself over time.
- Use only Samsung-approved batteries, and recharge your battery only with Samsung-approved chargers. Disconnect the charger from the power source when it is not in use. Do not leave the battery connected to a charger for more than a week, since overcharging may shorten its life.
- Extreme temperatures will affect the charging capacity of your battery: it may require cooling or warming first.
- Do not leave the battery in hot or cold places because the capacity and lifetime of the battery will be reduced. Try to keep the battery at room temperature. A phone with a hot or cold battery may not work temporarily, even when the battery is fully charged. Li-ion batteries are particularly affected by temperatures below 0°C (32°F).

- Do not short-circuit the battery. Accidental short-circuiting can occur when a metallic object like a coin, clip or pen causes a direct connection between the + and – terminals of the battery (metal strips on the battery). For example, do not carry a spare battery in a pocket or bag where the battery may contact metal objects. Short-circuiting the terminals may damage the battery or the object causing the short-circuiting.
- Dispose of used batteries in accordance with local regulations. Always recycle. Do not dispose of batteries in a fire.

Road safety

Your wireless phone gives you the powerful ability to communicate by voice, almost anywhere, anytime. But an important responsibility accompanies the benefits of wireless phones, one that every user must uphold.

When driving a car, driving is your first responsibility. When using your wireless phone while driving, follow local regulations in the country or region you are in.

Operating environment

Remember to follow any special regulations in force in the area you are in, and always switch off your phone whenever it is forbidden to use it, or when it may cause interference or danger.

When connecting the phone or any accessory to another device, read its user's guide for detailed safety instructions. Do not connect incompatible products.

As with other mobile radio transmitting equipment, users are advised that for the satisfactory operation of the equipment and for the safety of personnel, it is recommended that the equipment should only be used in the normal operating position (held to your ear with the antenna pointing over your shoulder).

Electronic devices

Most modern electronic equipment is shielded from radio frequency (RF) signals. However, certain electronic equipment may not be shielded against the RF signals from your wireless phone. Consult the manufacturer to discuss alternatives.

Pacemakers

Pacemaker manufacturers recommend that a minimum distance of 15 cm (6 inches) be maintained between a wireless phone and a pacemaker to avoid potential interference with the pacemaker. These recommendations are consistent with the independent research and recommendations of Wireless Technology Research. If you have any reason to suspect that interference is taking place, switch off your phone immediately.

Hearing aids

Some digital wireless phones may interfere with some hearing aids. In the event of such interference, you may wish to consult your hearing aid manufacturer to discuss alternatives.

Other medical devices

If you use any other personal medical devices, consult the manufacturer of your device to determine if it is adequately shielded from external RF energy.

Your physician may be able to assist you in obtaining this information.

Switch off your phone in health care facilities when regulations posted in these areas instruct you to do so.

Vehicles

RF signals may affect improperly installed or inadequately shielded electronic systems in motor vehicles. Check with the manufacturer or its representative regarding your vehicle.

You should also consult the manufacturer of any equipment that has been added to your vehicle.

Posted facilities

Switch off your phone in any facility where posted notices require you to do so.

Potentially explosive environments

Switch off your phone when in any area with a potentially explosive atmosphere, and obey all signs and instructions. Sparks in such areas could cause an explosion or fire resulting in bodily injury or even death.

Users are advised to switch off the phone while at a refuelling point (service station). Users are reminded of the need to observe restrictions on the use of radio equipment in fuel depots (fuel storage and distribution areas), chemical plants, or where blasting operations are in progress.


Areas with a potentially explosive atmosphere are often but not always clearly marked. They include the areas below decks on boats, chemical transfer or storage facilities, vehicles using liquefied petroleum gas, such as propane or butane, areas where the air contains chemicals or particles, such as grain, dust or metal powders, and any other area where you would normally be advised to turn off your vehicle engine.

Emergency calls

This phone, like any wireless phone, operates using radio signals, wireless, and landline networks as well as user-programmed functions, which cannot guarantee connection in all conditions. Therefore, you should never rely solely on any wireless phone for essential communications like medical emergencies.

To make or receive calls, the phone must be switched on and in a service area with adequate signal strength. Emergency calls may not be possible on all wireless phone networks or when certain network services and/or phone features are in use. Check with local service providers.

To make an emergency call:

1. Switch on the phone.
2. Key in the emergency number for your present location. Emergency numbers vary by location.
3. Press [].

Certain features like Call Barring may need to be deactivated before you can make an emergency call. Consult this document and your local cellular service provider.

Other important safety information

- Only qualified personnel should service the phone or install the phone in a vehicle. Faulty installation or service may be dangerous and may invalidate any warranty applicable to the device.
- Check regularly that all wireless phone equipment in your vehicle is mounted and operating properly.
- Do not store or carry flammable liquids, gases, or explosive materials in the same compartment as the phone, its parts, or accessories.
- For vehicles equipped with an air bag, remember that an air bag inflates with great force. Do not place objects, including installed or portable wireless equipment, in the area over the air bag or in the air bag deployment area. Improperly installed wireless equipment could result in serious injury if the air bag inflates.
- Switch off your phone before boarding an aircraft. It is dangerous and illegal to use wireless phones in an aircraft because they can interfere with the operation of the aircraft.

- Failure to observe these instructions may lead to the suspension or denial of telephone services to the offender, or legal action, or both.

Care and maintenance

Your phone is a product of superior design and craftsmanship and should be treated with care. The suggestions below will help you fulfill any warranty obligations and allow you to enjoy this product for many years.

- Keep the phone and all its parts and accessories out of the reach of small children and pets. They accidentally damage these things or choke on small parts.
- Keep the phone dry. Precipitation, humidity, and liquids contain minerals that corrode electronic circuits.
- Do not use the phone with a wet hand. Doing so may cause an electric shock to you or damage to the phone.
- Do not use or store the phone in dusty, dirty areas, as its moving parts may be damaged.

- Do not store the phone in hot areas. High temperatures can shorten the life of electronic devices, damage batteries, and warp or melt certain plastics.
- Do not store the phone in cold areas. When the phone warms up to its normal operating temperature, moisture can form inside the phone, which may damage the phone's electronic circuit boards.
- Do not drop, knock, or shake the phone. Rough handling can break internal circuit boards.
- Do not use harsh chemicals, cleaning solvents, or strong detergents to clean the phone. Wipe it with a soft cloth slightly dampened in a mild soap-and-water solution.
- Do not paint the phone. Paint can clog the device's moving parts and prevent proper operation.
- Do not put the phone in or on heating devices, such as a microwave oven, stove, or radiator. The phone may explode when overheated.
- When the phone or battery gets wet, the label indicating water damage inside the phone changes colour. In this case, phone repairs are no longer guaranteed by the manufacturer's warranty, even if the warranty for your phone has not expired.
- If your phone has a flash or light, do not use it too close to the eyes of people or animals. This may cause damage to their eyes.
- Use only the supplied or an approved replacement antenna. Unauthorised antennas or modified accessories may damage the phone and violate regulations governing radio devices.
- If the phone, battery, charger, or any accessory is not working properly, take it to your nearest qualified service facility. The personnel there will assist you, and if necessary, arrange for service.

- * Depending on the software installed or your service provider or country, some of the descriptions in this guide may not match your phone exactly.
- * Depending on your country, your phone and accessories may appear different from the illustrations in this guide.

SAMSUNG ELECTRONICS



World Wide Web
<http://www.samsungmobile.com>

Printed in Korea
Code No.: GH68-11898A
English. 08/2006. Rev. 1.0