



# Quick Setup Guide



BN68-04744C-01

## Package Contents

Unpack the product and check if all of the following contents have been included.  
If any items are missing, contact your dealer.  
The cables provided may vary depending on the product you purchase.

|             |  |  |  |                           |
|-------------|--|--|--|---------------------------|
| User Manual |  | Warranty card<br>(Not available in some locations) |  | Quick setup guide         |
| Cables      |  | D-SUB cable (optional)                             |  | HDMI-DVI cable (optional) |
|             |  | HDMI cable (optional)                              |  | Power cable               |
| Others      |  | Stand base   |  | Stand neck                |
|             |  | DC power adapter                                   |  |                           |

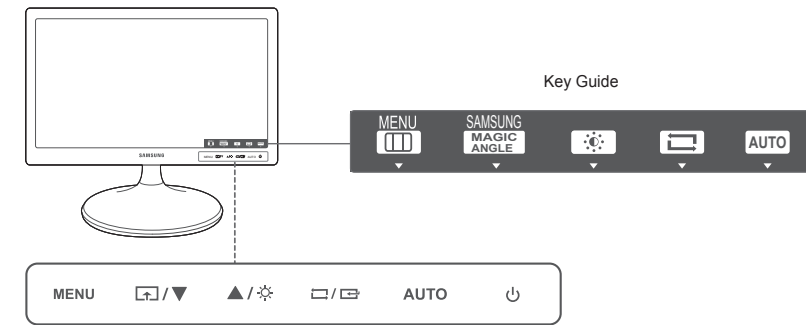


The terms HDMI and HDMI High-Definition Multimedia Interface, and the HDMI Logo are trademarks or registered trademarks of HDMI Licensing LLC in the United States and other countries.

See the User's Manual for further instructions for installation and adjustment.  
Reportez-vous au manuel de l'utilisateur pour obtenir des instructions supplémentaires sur l'installation et le réglage.

## Frontal Buttons

The color and shape of parts may differ from what is shown. Specifications are subject to change without notice to improve quality.



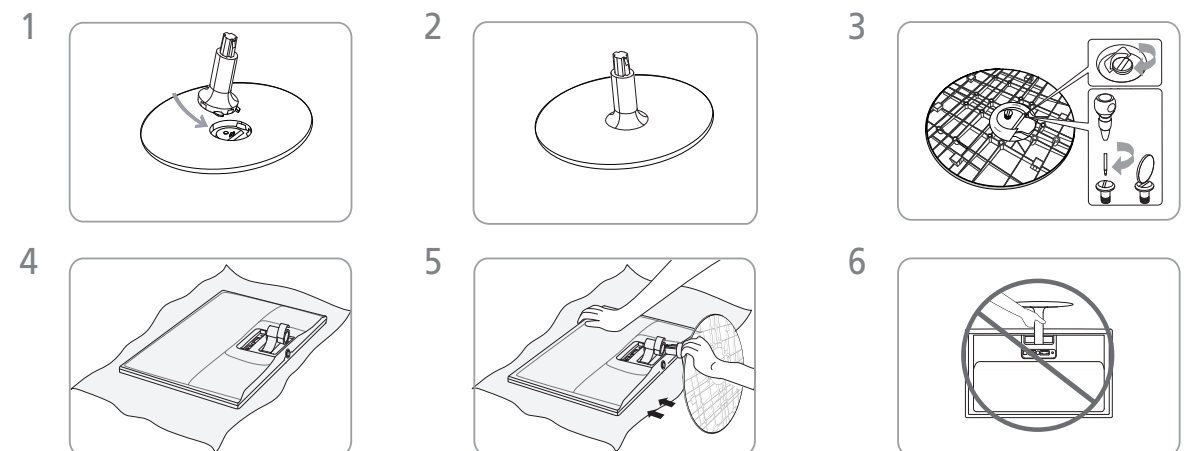
| Icon      | Description   |
|-----------|---|
| MENU      | Open or close the onscreen display (OSD) menu, or return to the parent menu.<br>OSD control lock: Maintain the current settings, or lock the OSD control to prevent unintended changes to settings.   |
|           | Configure Customized Key and press [  ]. The following options will be enabled.<br>SAMSUNG Angle - SAMSUNG Bright - Eco Saving - Image Size   |
|           | Move to the upper or lower menu or adjust the value for an option on the OSD menu.  |
|           | Use this button to control the brightness and contrast of the screen.   |
|           | Confirm a menu selection.<br>Pressing the [  ] button when the OSD menu is not displayed will change the input source (Analog/HDMI).<br>If you power on the product or change the input source by pressing the [  ] button, a message that shows the changed input source will appear at the top left corner of the screen. |
| AUTO      | Press the [AUTO] button to automatically adjust the screen settings.  |
|           | Turn the screen on or off.  |
| Key Guide | When a control button on the product is pressed, the Key Guide will be displayed before the onscreen menu opens.  |

## Connecting and Using a Source Device

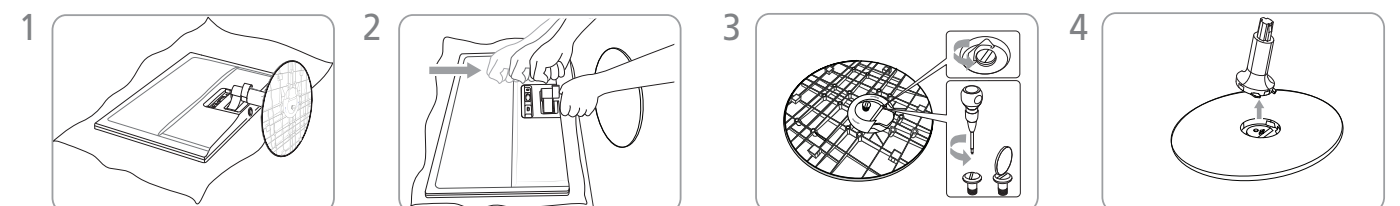
| Connecting the Power |  | Connecting Computer |   |
|----------------------|--|---------------------|---|
|                      | Connect the power adapter to [DC 14V] jack on the rear of the product. Connect the power cord to the adapter and wall socket. (The input voltage is switched automatically.)   |                     | Connect the D-SUB cable to the [RGB IN] port on the back of the product and the RGB port on the PC.     |
| Connecting Computer  |  | Connecting Computer |   |
|                      | Connect the HDMI cable to the [HDMI IN] port on the back of the product and the HDMI port on the PC.   |                     | Connect the HDMI-DVI cable to the [HDMI IN] port on the back of the product and the DVI port on the PC. |
| Anti-theft Lock      |  |                     |   |
|                      | To lock an anti-theft locking device:<br>1 Fix the cable of your anti-theft locking device to a heavy object such as a desk.<br>2 Put one end of the cable through the loop on the other end.<br>3 Insert the Kensington Lock into the security slot on the back of the display.<br>4 Lock the locking device. |                     |   |

## Attaching the Stand

Before assembling the product, place the product down on a flat and stable surface so that the screen is facing downwards.



## Removing the Stand



Screen Setup

Configure the screen settings such as brightness.

|                  |                       |   |
|------------------|-----------------------|---|
| Screen Setup     | Brightness            | 0~100   |
|                  | Contrast              | 0~100   |
|                  | Sharpness             | 0~100   |
|                  | SAMSUNG MAGIC Bright  | Custom, Standard, Game, Cinema, Dynamic Contrast  |
|                  | SAMSUNG MAGIC Angle   | Off, Lean Back Mode 1, Lean Back Mode2, Standing Mode, Side Mode, Group View, Custom                            |
|                  | SAMSUNG MAGIC Upscale | Off , Mode1, Mode2  |
|                  | Image Size            | PC mode: Auto, Wide<br>AV mode: 4:3/ 16:9/ Screen Fit (S22C330H)<br>4:3/ Wide/ Screen Fit (S22C330HW/S19C330HW) |
|                  | HDMI Black Level      | Normal / Low  |
|                  | H-Position            | 0~100   |
|                  | V-Position            | 0~100   |
| Configuring Tint | Coarse                |   |
|                  | Fine                  |   |
|                  | Red                   | 0~100   |
|                  | Green                 | 0~100   |
|                  | Blue                  | 0~100   |
|                  | Color Tone            | PC mode: Cool 2, Cool 1, Normal, Warm1, Warm 2, Custom<br>AV mode: Cool, Normal, Warm, Custom                   |
|                  | Gamma                 | Mode1, Mode2, Mode3   |

|                  |                  |  |
|------------------|------------------|--|
| Coordinating OSD | Language         | Deutsch, English, Español, Français, Italiano, Magyar, Polski, Português, Русский, Svenska, Türkçe, 日本語, 한국어, 汉语 |
|                  | Menu H-Position  | 0~100  |
|                  | Menu V-Position  | 0~100  |
|                  | Display Time     | 5 sec, 10 sec, 20 sec, 200 sec   |
|                  | Transparency     | Off / On   |
| Setup and Reset  | Reset            | Yes / On   |
|                  | Eco Saving       | <75%> <50%> <Off>  |
|                  | Off Timer        | Off / On   |
|                  | Turn Off After   | 1~23 hours.  |
|                  | PC/AV Mode       | PC/AV  |
|                  | Key Repeat Time  | Acceleration/ 1 sec/ 2 sec/ No Repeat  |
|                  | Source Detection | Auto / Manual  |
| INFORMATION      | Customized Key   | MAGIC Angle - MAGIC Bright - Eco Saving - Image Size   |

General

| Model Name   |  | S22C330H  | S22C330HW                         | S19C330HW                          |
|--|--|---|-----------------------------------|------------------------------------|
| Panel  | Size   | 54.6 cm   | 55.8 cm                           | 48.1 cm                            |
|  | Display area (H) x (V)   | 476.64 x 268.11 mm  | 473.76 x 296.1 mm                 | 408.24 x 255.15 mm                 |
|  | Pixel Pitch (H) x (V)  | 0.24825 x 0.24825 mm  | 0.282 x 0.282 mm                  | 0.2835 x 0.2835 mm                 |
| Resolution   | Optimum Resolution   | 1920 x 1080 @ 60 Hz   | 1680 x 1050 @ 60 Hz               | 1440 x 900 @ 60 Hz                 |
|  | Maximum Resolution   | 1920 x 1080 @ 60 Hz   | 1680 x 1050 @ 60 Hz               | 1440 x 900 @ 60 Hz                 |
| Dimensions (W x H x D) / Weight  | Without Stand  | 517.4 x 315.1 x 101 mm / 3.0 kg   | 514.5 x 343.1 x 100.4 mm / 3.3 kg | 448.2 x 300.3 x 101.1 mm / 2.55 kg |
|  | With Stand   | 517.4 x 408 x 210 mm / 3.3 kg   | 514.5 x 436 x 210 mm / 3.6 kg     | 448.2 x 394 x 210 mm / 2.85 kg     |
| PowerSaver   | The power-saving function of this product reduces power consumption by switching off the screen and changing the color of the power LED if the product is not used for a specified period of time. The power is not turned off in power-saving mode. To switch the screen back on, press any key on the keyboard or move the mouse. Power-saving mode functions only when the product is connected to a PC that has a power-saving function. |   |                                   |                                    |
|  | Energy Star Power Consumption  | 21 W  | 19 W                              | 15 W                               |
|  | Power saving mode  | Typical 0.3 W   | Typical 0.3 W                     | Typical 0.3 W                      |
|  | Power off (Power button)   | Typical 0.3 W   | Typical 0.3 W                     | Typical 0.3 W                      |
| Power Supply   |  | This product supports 100-240 V. Since the standard voltage may differ from country to country, please check the label on the back of the product.  |                                   |                                    |
| Environmental Consideration  | Operating  | Temperature : 10°C ~ 40°C (50°F ~ 104°F)  |                                   |                                    |
|  |  | Humidity : 10 % – 80 %, non-condensing  |                                   |                                    |
|  | Storage  | Temperature : -20°C ~ 45°C (-4°F ~ 113°F)   |                                   |                                    |
|  |  | Humidity : 5 % – 95 %, non-condensing   |                                   |                                    |
| Plug-and-Play  |  | This monitor can be installed and used with any Plug-and-Play compatible systems.<br>Two-way data exchange between the monitor and PC system optimizes the monitor settings.<br>Monitor installation takes place automatically.<br>However, you can customize the installation settings if desired. |                                   |                                    |
| Panel Dots (Pixels)  |  | Due to the nature of the manufacturing of this product, approximately 1 pixel per million (1ppm) may be brighter or darker on the LCD panel.<br>This does not affect product performance.   |                                   |                                    |
| This device is a Class B digital apparatus.  |  |   |                                   |                                    |
| ENERGY STAR® is a US registered mark of the United States Environmental Protection Agency.<br>Energy Star power is measured with the test method in the current Energy Star® Standard. |  |   |                                   |                                    |

Troubleshooting Guide

| Issues  | Solutions  |
|---|--|
| The power LED is off. The screen will not switch on.                            | Check that the power cable is connected properly.  |
| The message <b>'Check Signal Cable'</b> appears.                                | Check that the power cable is connected properly.<br>Check that the device connected to the product is powered on.   |
| <b>'Not Optimum Mode'</b> is displayed.   | This message appears when the signal from the graphics card exceeds the maximum resolution or frequency for the product.<br>Change the maximum resolution and frequency to suit the product performance, referring to Standard Signal Mode Table.                  |
| There is no image on the screen and the power LED blinks every 0.5 to 1 second. | The product is operating in power-saving mode.<br>Press any key on the keyboard or move the mouse to return to normal operating mode.  |
| Is the PC connected using a D-SUB or HDMI cable?                                | The screen may appear blank with some graphics cards. This can occur when the D-SUB or HDMI cable is connected after the PC boots or is disconnected and connected again while the PC is in use. Reboot the PC after connecting it to a D-SUB cable or HDMI cable. |

Q & A

| Question                         | Answer   |
|----------------------------------|--|
| How can I change the resolution? | Windows XP: Go to Control Panel → Appearance and Themes → Display → Settings, and adjust the resolution.   |
|                                  | Windows ME/2000: Go to Control Panel → Display → Settings, and adjust the resolution.  |
|                                  | Windows Vista: Go to Control Panel → Appearance and Personalization → Personalize → Display Settings, and adjust the resolution.                         |
|                                  | Windows 7: Go to Control Panel → Appearance and Personalization → Display → Adjust Resolution, and adjust the resolution.                                |
|                                  | Windows 8: Go to Settings Control Panel → Appearance and Personalization → Display → Adjust Resolution, and adjust the resolution.                       |
| How do I set power-saving mode?  | Windows XP: Set power-saving mode in Control Panel → Appearance and Themes → Display → Screen Saver Settings or BIOS SETUP on the PC.                    |
|                                  | Windows ME/2000: Set power-saving mode in Control Panel → Display → Screen Saver Settings or BIOS SETUP on the PC.                                       |
|                                  | Windows Vista: Set power-saving mode in Control Panel → Appearance and Personalization → Personalize Screen Saver Settings or BIOS SETUP on the PC.      |
|                                  | Windows 7: Set power-saving mode in Control Panel → Appearance and Personalization → Personalize Screen Saver Settings or BIOS SETUP on the PC.          |
|                                  | Windows 8: Set power-saving mode in Settings Control Panel → Appearance and Personalization → Personalize Screen Saver Settings or BIOS SETUP on the PC. |

Correct Disposal

Correct Disposal of This Product (Waste Electrical & Electronic Equipment)



(Applicable in countries with separate collection systems)

This marking on the product, accessories or literature indicates that the product and its electronic accessories (e.g. charger, headset, USB cable) should not be disposed of with other household waste at the end of their working life. To prevent possible harm to the environment or human health from uncontrolled waste disposal, please separate these items from other types of waste and recycle them responsibly to promote the sustainable reuse of material resources. Household users should contact either the retailer where they purchased this product, or their local government office, for details of where and how they can take these items for environmentally safe recycling. Business users should contact their supplier and check the terms and conditions of the purchase contract. This product and its electronic accessories should not be mixed with other commercial wastes for disposal.

(India Only)  
For more information on safe disposal and recycling visit our website [www.samsung.co/in](http://www.samsung.co/in) or contact our Helpline numbers - 18002668282, 180030008282.

**Warning! Important Safety Instructions**

(Please read the appropriate section that corresponds to the marking on your Samsung product before attempting to install the product.)

**CAUTION**

**RISK OF ELECTRIC SHOCK DO NOT OPEN**

CAUTION: TO REDUCE THE RISK OF ELECTRIC SHOCK, DO NOT REMOVE COVER (OR BACK). THERE ARE NO USER SERVICEABLE PARTS INSIDE. REFER ALL SERVICING TO QUALIFIED PERSONNEL.

This symbol indicates that high voltage is present inside. It is dangerous to make any kind of contact with any internal part of this product.

This symbol alerts you that important literature concerning operation and maintenance has been included with this product.

- The slots and openings in the cabinet and in the back or bottom are provided for necessary ventilation. To ensure reliable operation of this apparatus, and to protect it from overheating, these slots and openings must never be blocked or covered.
- Do not place this apparatus near or over a radiator or heat resistor, or where it is exposed to direct sunlight.
- Do not place a water containing vessel(vases etc.) on this apparatus, as this can result in a risk of fire or electric shock.
- Do not expose this apparatus to rain or place it near water(near a bathtub, washbowl, kitchen sink, or laundry tub, in a wet basement, or near a swimming pool etc.). If this apparatus accidentally gets wet,unplug it and contact an authorized dealer immediately. Make sure to pull out the power cord from the outlet before cleaning.
- This apparatus use batteries. In your community there might be regulations that require you to dispose of these batteries properly under environmental considerations. Please contact your local authorities for disposal or recycling information.
- Do not overload wall outlets, extension cords or adaptors beyond their capacity, since this can result in fire or electric shock. Power-supply cords should be routed so that they are not likely to be walked on or pinched by items placed upon or against them, paying particular attention to cords at plug end, adaptors and the point where they exit from the appliance.
- To protect this apparatus from a lightning storm, or when it is left unattended and unused for long periods of time, unplug it from the wall outlet and disconnect the antenna or cable system. This will prevent damage to the set due to lightning and power line surges.
- Before connecting the AC power cord to the DC adaptor outlet, make sure the voltagedesignation of the DC adaptor corresponds to the local electrical supply.
- Never insert anything metallic into the open parts of this apparatus. Doing so may create a danger of electric shock.
- To avoid electric shock, never touch the inside of this apparatus. Only a qualified technician should open this apparatus.
- Make sure to plug the power cord in until it is firmly inserted. When removing the power cord, make sure to hold the power plug when pulling the plug from the outlet. Do not touch the power cord with wet hands.
- If this apparatus does not operate normally - in particular, if there are any unusual sounds or smells coming from it unplug it immediately and contact an authorized dealer or service center.
- Be sure to pull the power plug out of the outlet if the TV is to remain unused or if you are to leave the house for an extended period of time (especially when children, elderly or disabled people will be left alone in the house.).
- Be sure to contact an authorized service center, when installing your set in a location with heavy dust, high or low temperatures, high humidity, chemical substances and where it operates for 24 hours such as the airport, the train station etc. Failure to do so may cause serious damage to your set.
- Use only a properly grounded plug and receptacle.
- To disconnect the apparatus from the mains, the plug must be pulled out from the mains socket, therefore the mains plug shall be readily operable.
- Do not allow children to hang onto the product.
- Store the accessories (battery, etc.) in a location safely out of the reach of children.
- Do not install the product in an unstable location such as a shaky self, a slanted floor or a location exposed to vibration.
- Do not drop or impart any shock to the product. If the product is damaged, disconnect the power cord and contact a service center.
- Unplug the power cord from the power outlet and wipe the product using a soft, dry cloth. Do not use any chemicals such as wax, benzene, alcohol, thinners, insecticide, air freshener, lubricant or detergent. This may damage the appearance or erase the printing on the product.
- Apparatus shall not be exposed to dripping or splashing.
- Do not dispose of batteries in a fire.
- Do not short circuit, disassemble or overheat the batteries.
- Danger of explosion if battery is incorrectly replaced. Replace only with the same or equivalent type.
- WARNING - TO PREVENT THE SPREAD OF FIRE, KEEP CANDLES OR OTHER OPEN FLAMES AWAY FROM THIS PRODUCT AT ALL TIMES.

BN68-04744C-00.indd 2

2013-08-02 1:35:48