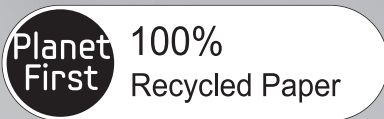




Refrigerator user manual



This manual is made with 100% recycled paper.

English

imagine the possibilities

Thank you for purchasing a Samsung product.
To receive a more complete service,
please register your product at
www.samsung.com/register

SAMSUNG

Free Standing Appliance

safety information

SAFETY INFORMATION



- Before operating the appliance, please read this manual thoroughly and retain it for your reference.



- Because these following operating instructions cover various models, the characteristics of your refrigerator may differ slightly from those described in this manual.

CAUTION/WARNING SYMBOLS USED

	Indicates that a danger of death or serious injury exists.
	Indicates that a risk of personal injury or material damage exists.

OTHER SYMBOLS USED

	Represents something you must NOT do.
	Represents something you must NOT disassemble.
	Represents something you must NOT touch.
	Represents something you must follow.
	Indicates that you must disconnect the power plug from the socket.
	Represents a ground is needed to prevent electric shock.
	It is recommended that this symbol be handled by service man.

These warning signs are here to prevent injury to you and others.

Please follow them explicitly.

After reading this section, keep it in a safe place for future reference.

CE Notice

This product has been determined to be in compliance with the Low Voltage Directive (2006/95/EC), the Electromagnetic Compatibility Directive (2004/108/EC) and the Eco-Design Directive(2009/125/EC) implemented by Regulation (EC) No 643/2009 of the European Union.



- This refrigerator must be properly installed and located in accordance with the manual before it is used.
- Use this appliance only for its intended purpose as described in this instruction manual.
- We strongly recommend that any servicing be performed by a qualified individual.
- Please dispose of the packaging material for this product in an environmentally friendly manner.
- This appliance is not intended for use by persons (including children) with reduced physical, sensory or mental capabilities, or lack of experience and knowledge, unless they have been given supervision or instruction concerning use of the appliance by a person responsible for their safety.
- Children should be supervised to ensure that they do not play with the appliance.

SEVERE WARNING SIGNS



- Do not install the refrigerator in a damp place or place where it may come in contact with water.
 - Deteriorated insulation of electrical parts may cause an electric shock or fire.
- Do not place this refrigerator in direct sunlight or expose to the heat from stoves, room heaters or other appliance.
- Do not plug several appliances into the same multiple power board. The refrigerator should always be plugged into its own individual electrical which has a voltage rating that matched the rating plate.
 - This provides the best performance and also prevents overloading house wiring circuits, which could cause a fire hazard from overheated wires.
- Make sure that the power plug is not squashed or damaged by the back of the refrigerator.
- Do not bend the power cord excessively or place heavy articles on it.
 - This constitutes a fire hazard.
- Have the power cord repaired or replaced immediately by the manufacturer or its service agent if power cord has become frayed or damaged.
- Do not use a cord that shows cracks or abrasion damage along its length or at either end.
- If the power cord is damaged, have it replaced immediately by the manufacturer or its service agent.
- When moving the refrigerator, be careful not to roll over or damage the power cord.
- Do not insert the power plug with wet hands.
- Unplug the refrigerator before cleaning and making repairs.
- Do not use a wet or damp cloth when cleaning the plug.
- Remove any foreign matter or dust from the power plug pins.
 - Otherwise there is a risk of fire.
- If the refrigerator is disconnected from the power supply, you should wait for at least ten minutes before plugging it back.
- If the wall socket is loose, do not insert the power plug.
 - There is a risk of electric shock or fire.
- The appliance must be positioned so that the plug is accessible after installation.
- The refrigerator must be grounded.
 - You must ground the refrigerator to prevent any power leakages or electric shocks caused by current leakage from the refrigerator.
- Never use gas pipes, telephone lines or other potential lightning rods as ground.
 - Improper use of the ground plug can result in electric shock.
- Do not disassemble or repair the refrigerator by yourself.
 - You run risk of causing a fire, malfunction and/or personal injury.
- If you smell pharmaceutical or smoke, pull out power plug immediately and contact your Samsung electronics service center.
- Keep ventilation opening in the appliance enclosure or mounting structure clear of obstruction.
- Do not use mechanical devices or any other means to accelerate the defrosting process, other than those recommended by the manufacturer.
- Do not damage the refrigerant circuit.
- Do not place or use electrical appliance inside the refrigerator/freezer, unless they are of a type recommended by the manufacturer.
- Before changing the interior light, unplug the appliance from the power supply.
- If you experience difficulty when changing the light, contact your service center.
- The appliance is not intended for use by children or infirm persons without supervision.
- Children should be supervised to ensure that they do not play with the appliance.
- Do not let children hang on the door. If not, a serious injury may occur.
- Do not touch the inside walls of the freezer or products stored in the freezer with wet hands.
 - This may cause frostbite.
- If the refrigerator is not to be used for a long period of time, pull out the power plug.
 - Deterioration in the insulation may cause fire.
- Do not store articles on the top of the appliance.
 - When you open or close the door, the articles may fall and cause personal injury and or material damage.

CAUTION SIGNS



- This product is intended only for the storage of food in a domestic environment.
- Manufacturer's recommended storage times should be adhered to.
Refer to relevant instructions
- Bottle should be stored tightly together so that they do not fall out.
- Do not put bottles or glass containers in the freezer.
 - When the contents freeze, the glass may break and cause personal injury.
- Do not spray inflammable gas near the refrigerator.
 - There is a risk of explosion or fire.
- Do not directly spray water inside or outside the refrigerator.
 - There is a risk of fire or electric shock.
- Do not store volatile or flammable substances in the refrigerator.
 - The storage of benzene, thinner, alcohol, ether, LP gas and other such products may cause explosions.
- If you have a long vacation planned, you must empty the refrigerator and turn it off.
- Do not store pharmaceuticals products, scientific materials or temperature-sensitive products in the refrigerator.
 - Products that require strict temperature controls must not be stored in the refrigerator.
- Do not put a container filled with water on the refrigerator.
 - If spilled, there is a risk of fire or electric shock.
- Be careful not to damage the door switches on the inside walls or middle of the refrigerator.
 - If they are damaged, refrigerator does not operate well.

CAUTION SIGNS FOR CLEANING

- Never put fingers or other objects into the dispenser hole.
 - It may cause personal injury or material damage.
- Do not use a wet or damp cloth when cleaning the plug, remove any foreign material or dust from the power plug pins.
 - Otherwise there is a risk of fire.
- If the refrigerator is disconnected from the power supply, you should wait for at least five minutes before plugging it back.

WARNING SIGNS FOR DISPOSAL

- When disposing of this or other refrigerator/s, remove the door/door seals, door latch so that small children or animals cannot become trapped inside.
- Leave the shelves in place so that children may not easily climb inside.
- Cyclopentane is used as a insulation blowing gas. The gases in insulation material require special disposal procedure. Please contact your local authorities in regard to the environmentally safe disposal of this product. Ensure that none of the pipes on the back of the appliances are damaged prior to disposal. The pipes shall be broke in the open space.
- Contains fluorinated greenhouse gases covered by the Kyoto Protocol.
Hermetically sealed system.
Do not vent gases into the atmosphere.
Refrigerant type: R-134a
Quantity: 0.16Kg
Global Warming Potential (GWP) = 1300

ADDITIONAL TIPS FOR PROPER USAGE



- To get best performance of product,
 - Do not place foods too closely in front of the vents at the rear of the appliance as it can obstruct free air circulation in the freezer compartment.
 - Wrap the food up properly or place it in airtight containers before put it into the fridge freezer.
 - Do not put any newly introduced food for freezing near to already frozen food.
- Do not place carbonated or fizzy drinks in the freezer compartment.
- Please observe maximum storage times and expiry dates of frozen goods.
- There is no need to disconnect the refrigerator from the power supply if you will be away for less than three weeks. But, remove all the food if you are going away for the three weeks or more. Unplug the refrigerator and clean it, rinse and dry.
- In the event of a power failure, call the local office of your Electricity Company and ask how long it is going to last. Most power failures that are corrected in an hour or two will not affect your refrigerator temperatures. However, you should minimize the number of door openings while the power is off. But should the power failure last more than 24hours, remove all frozen food.
- If the key is provided with refrigerator, the keys should be kept out of the reach of children and not in the vicinity of the appliance.
- The appliance might not operate consistently (possibility of defrosting of contents or temperature becoming too warm in the frozen food compartment) when sited for an extended period of time below the cold end of the range of temperatures for which the refrigerating appliance is designed.
- Do not store food which goes bad easily at low temperature, such as bananas, melons.
- Place the ice tray at the originally provided position by manufacturer in order to achieve optimal ice-freezing.
- Your appliance is frost free, which means there is no need to manually defrost your appliance, as this will be carried out automatically.
- Temperature rising during the defrost can comply with ISO requirement. But If you want to prevent an undue rise in the temperature of the frozen food while defrosting the appliance, please wrap the frozen food in several layers of paper such as newspaper.
- Any increase in temperature of frozen food during defrosting can shorten its storage life.

Saving Energy Tips

- Install the appliance in a cool, dry room with adequate ventilation. Ensure that it is not exposed to direct sunlight and never put it near a direct source of heat (radiator, for example).
- Never block any vents or grilles on the appliance.
- Allow warm food to cool down before placing it in the appliance.
- Put frozen food in the refrigerator to thaw.
You can then use the low temperatures of the frozen products to cool food in the refrigerator.
- Do not keep the door of the appliance open for too long when putting food in or taking food out.
The shorter time for which the door is open, the less ice will form in the freezer.
- Clean the rear of the refrigerator regularly. Dust increases energy consumption.
- Do not set temperature colder than necessary.
- Ensure sufficient air exhaust at the refrigerator base and at the back wall of the refrigerator. Do not cover air vent openings.
- Allow clearance to the right, left, back and top when installing.
This will help reduce power consumption and keep your energy bills lower.

contents

SETTING UP YOUR REFRIGERATOR

6

- 6 Getting ready to install the refrigerator
- 7 Leveling the refrigerator
- 7 Installing and Disassembling the door handle
- 8 Setting up the refrigerator

OPERATING THE SAMSUNG REFRIGERATOR

8

- 8 Using the digital display
- 10 Controlling the temperature
- 12 Making ice
- 12 Using water dispenser
- 14 Removing the refrigerator accessories

TROUBLESHOOTING

15

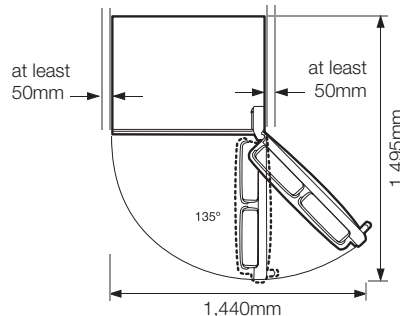
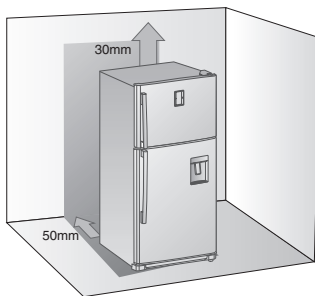
setting up your refrigerator

GETTING READY TO INSTALL THE REFRIGERATOR

Congratulations on the purchase of your Samsung Refrigerator. We hope you will enjoy the many state-of-the-art features and efficiencies that this new appliance has to offer.

Selecting the best location for the refrigerator

- Select a location without direct exposure to sunlight.
- Select a location with level (or nearly level) flooring.
- Select a location with enough space for the refrigerator doors to open easily.
 - Overall space required in use. Refer to drawing and dimension as below.



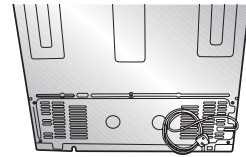
- Allow sufficient space to the right, left, back and top for air circulation. This will help reduce power consumption and keep your energy bills lower.
- Do not install the refrigerator where the temperature will go below 10°C.
- Please ensure that appliance can be moved freely in the event of maintenance & service.



When installing, servicing, or cleaning behind the refrigerator, be sure to pull the unit straight out and push back in straight after finishing. Also, make sure your floor supports the full-load refrigerator. Otherwise, it may cause floor damage.



- Please tie up the extra length of the power cord at the back of the refrigerator so as not to be touched on the floor preventing the power cord from being crushed by the rollers upon relocation.



LEVELING THE REFRIGERATOR

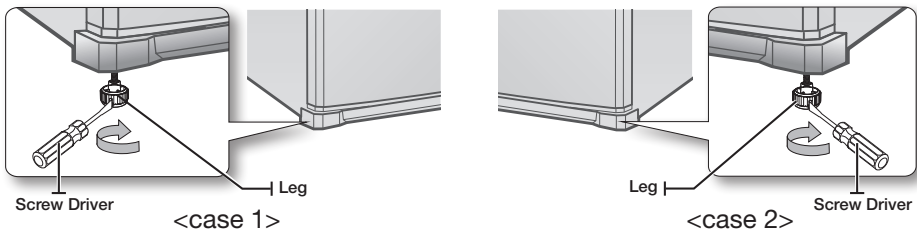
If the front of the appliance is slightly higher than the rear, the door can be opened and closed more easily.

case 1) The appliance tilts down to the left.

- Turn the left adjusting leg in the direction of the arrow until the appliance is level.

case 2) The appliance tilts down to the right.

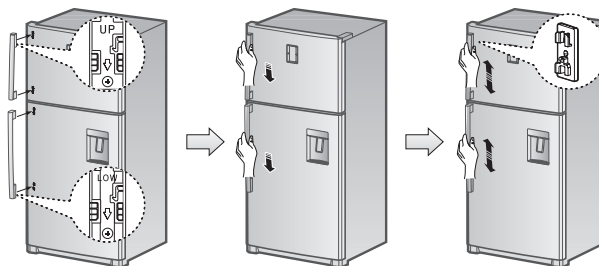
- Turn the right adjusting leg in the direction of the arrow until the appliance is level.



INSTALLING AND DISASSEMBLING THE DOOR HANDLE

Installing the Door Handle

1. Match the Handle Locking Tabs installed on the left hand side of the door and the handle inserts.
2. Fix the handle by pulling it down or tapping it lightly with a tool like a rubber hammer.
3. Check whether the locking tabs inside the handle are assembled by pulling it up and down.



setting up _7

SETTING UP THE REFRIGERATOR

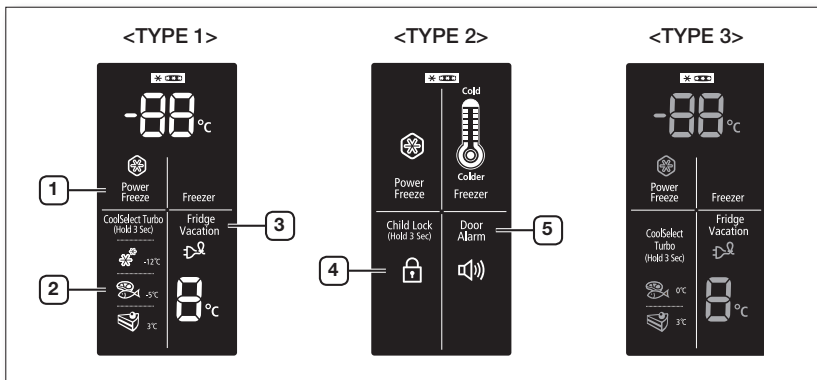
Now that you have your new refrigerator installed and in place, you are ready to set up and enjoy the full features and functions of the appliance.

By completing the following steps, your refrigerator should be fully operational. If not, first check the power supply and electricity source or try the troubleshooting section at the back of this user guide. If you have any further questions, contact your Samsung Electronics service center.

1. Place the refrigerator in an appropriate location with reasonable clearance between the wall and the refrigerator. Refer to installation instructions in this manual.
2. Once the refrigerator is plugged in, make sure the interior light comes on when you open the doors.
3. Set the temperature control to the coldest temperature and wait for an hour. The freezer should get slightly chilled and the motor should run smoothly.
4. After powering the refrigerator, it will take a few hours to reach the appropriate temperature. Once the refrigerator temperature is sufficiently cool, you can store food and drink in the refrigerator.


operating the SAMSUNG refrigerator

USING THE DIGITAL DISPLAY



1 Power Freeze

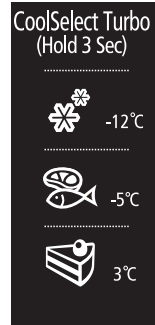
This icon will light up when you activate the “Power freeze” feature. “Power freeze” is great for times when you need a lot of ice. Press the Power freeze button and ice production will increase. When you have enough, just press the button again to cancel the “Power freeze” mode.

-  When you use this function the energy consumption of the refrigerator will increase. Remember to turn it off when you don't need it and return the freezer to your original temperature setting. This function must be activated before putting large amount of food stuff in the freezer compartment at least 24 hours before.

2 Coolselect Turbo <TYPE 1>

"Fresh(3°C)", "Soft Freeze(-5°C)" and "Frozen Vegetable(-12°C)" indicates the status of the Coolselect Turbo.

1. When "Frozen Vegetable(-12°C)" selected on the Coolselect Turbo, regardless of the overall temperature setting of the refrigerator. This feature helps keep frozen vegetable fresh for longer.
2. When "Soft Freeze(-5°C)" selected on the Coolselect Turbo, regardless of the overall temperature setting of the refrigerator. this feature helps keep meat and fish fresh for longer.
3. When "Fresh(3°C)" selected on the Coolselect Turbo, regardless of the overall temperature setting of the refrigerator. this feature helps keep vegetable and fruit fresh for longer.



2-1 Coolselect Turbo <TYPE 3>

"Fresh(3°C)", "Soft Freeze(0°C)" indicates the status of the Coolselect Turbo.

1. When "Soft Freeze(0°C)" selected on the Coolselect Turbo, regardless of the overall temperature setting of the refrigerator. this feature helps keep meat and fish fresh for longer.
2. When "Fresh(3°C)" selected on the Coolselect Turbo, regardless of the overall temperature setting of the refrigerator. this feature helps keep vegetable and fruit fresh for longer.



3 Vacation

- If you are going on a long vacation or business trip or you do not need to use the refrigerator, press the fridge button for selecting the Vacation mode.
- The fridge is switched off but the freezer remains on.
- The Vacation indicator (3) remains on while the Vacation function is operating.



- You must empty the refrigerator before pressing the selecting the Vacation Mode.
- There is no need to disconnect the refrigerator from the power supply if you will be away for less than three weeks. But remove all the food if you are going away for three weeks or more, unplug the refrigerator and clean, rinse and dry it.

4 Child lock

By pressing the child lock button for 3 seconds, all buttons will be locked. To cancel this function, press the child lock button again for 3 seconds again.

5 Door Alarm

When you press the Door alarm button, Door alarm icon will light up. The alarm will go off after a certain period of time (about 2 minutes) when the refrigerator door kept open. If you want to turn off the Alarm, press the button again.

CONTROLLING THE TEMPERATURE (ELECTRONIC CONTROL)

CONTROLLING THE FREEZER TEMPERATURE

The freezer temperature can be set between -14°C and -24°C to suit your particular needs. Press the Freezer button repeatedly until the desired temperature is shown in the temperature display. Keep in mind that foods like ice cream may melt at -16°C.

The temperature display will move sequentially from -14°C and -24°C.

When the display reaches -14°C, it will begin again at -24°C.

Five seconds after the new temperature is set the display will again show the actual current freezer temperature. However, this number will change as the Freezer adjusts to the new temperature.

CONTROLLING THE FRIDGE TEMPERATURE

The refrigerator temperature can be set between 7°C and 1°C to suit your particular needs. Press the Fridge button repeatedly until the desired temperature is shown in the temperature display. The temperature control process for the Fridge works just like the Freezer process. Press the Fridge button to set your desired temperature. After a few seconds, the Fridge will begin tracking towards the newly set temperature. This will be reflected in the digital display.

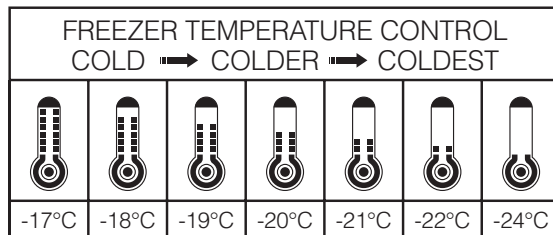
CONTROLLING THE TEMPERATURE (SEMI ELECTRONIC CONTROL)

CONTROLLING THE FREEZER TEMPERATURE

The freezer temperature can be set between -17°C and -24°C to suit your particular needs. Press the Freezer button repeatedly until the desired temperature is shown in the temperature display. Keep in mind that foods like ice cream may melt at -16°C .

The temperature display will move sequentially from -17°C and -24°C . When the display reaches -17°C , it will begin again at -24°C .

Five seconds after the new temperature is set the display will again show the actual current freezer temperature. However, this number will change as the Freezer adjusts to the new temperature.



CONTROLLING THE FRIDGE TEMPERATURE

The refrigerator temperature can be set between 7°C and 1°C to suit your particular need.

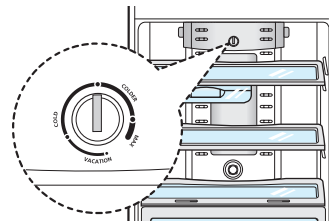
Turn the Fridge lever clockwise or counter clockwise until the desired temperature is shown in the cover damper.

When storing large quantities of food to be refrigerated or temperature is not cold enough, Adjust the temperature control to the "COLDER" position.

When using MID range, adjust the temperature control to the halfway position between COLDER and COLD.

When the food refrigerated is frozen, or there is a small quantity of food, adjust the temperature control to the COLD position.

If you are going on a long vacation or business trip or you do not need to use the refrigerator, adjust the temperature control to the "VACATION" position. The refrigerator is switched off but the freezer remains on.



CAUTION You must empty the refrigerator before adjusting the Vacation position.

- The temperature of the freezer or the refrigerator may rise from opening the doors too frequently, or if a large amount of warm or hot food is placed in either side. This may cause the digital display to blink. Once the freezer and refrigerator return to their normal set temperatures the blinking will stop. If the blinking continues, you may need to "reset" the refrigerator. Try unplugging the appliance, wait about 10 minutes and then plug back in.

MAKING ICE (OPTIONAL)

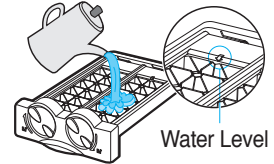
- TWIST ICE MAKER

Making Ice Cubes

Remove the ice cube tray by pulling it towards you. Fill the tray with water up to the maximum water level marked on the rear of the tray.

Slide the tray back into the holder, taking care not to spill the water.

Wait until the ice cubes are formed.



Removing the Ice Cubes

Make sure that the ice cube storage bin is in place under the ice cube tray. If not, slide it into place.

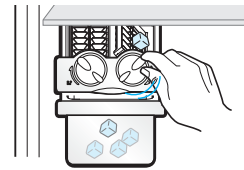
Twist one of the levers firmly in the clockwise direction until the tray twists slightly.

Result : The ice cubes fall into the storage bin.

Repeat Step 2 for the other half of the tray, if necessary.

Remove the storage bin by:

- Lifting it slightly
- Pulling it towards you



- REMOVABLE ICE TRAY

Making ice cubes

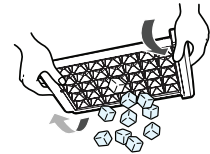
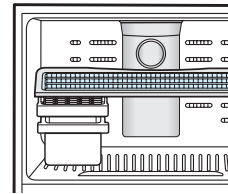
Remove the ice cube tray by pulling it towards you.

Fill the tray with water up to the maximum water level marked on the rear of the tray.

Slide the tray back into the holder, taking care not to spill the water.

Removing the ice cubes

To remove ice cubes, hold the tray at its ends and twist gently.

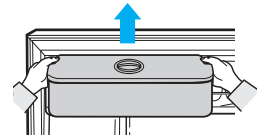


USING WATER DISPENSER(OPTIONAL)

With the water dispenser, you can obtain chilled water easily without opening the refrigerator door.

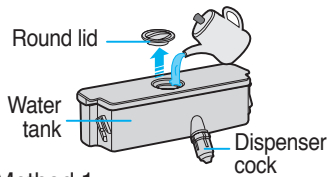
Lift up and pull out the water tank.

- Hold the handgrips on both sides to lift out the water tank.
- Clean the inside of water tank when using it for the first time.



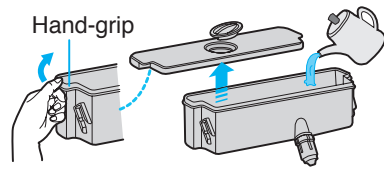
Fill the water tank with water, ensuring that it is in a stable position, allowing for the extended water supply outlet.

- Fill with water up to 2.8ℓ. If it is filled higher than this, it may overflow when the lid is closed.
- It is impossible to fill the tank with water while it is positioned in the refrigerator.



Method 1.

Fill the water lifting the round lid in the arrow direction to open.



Method 2.

Please fill the water after holding and lifting the large lid to open it.

Close the refrigerator door after fitting the water tank.

- Confirm that the dispenser cock is outside after closing the door.

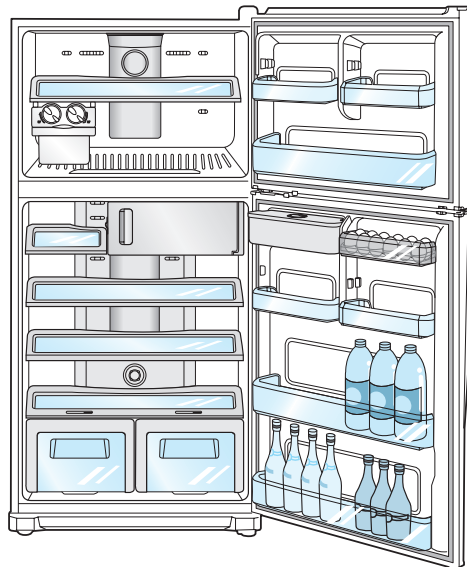
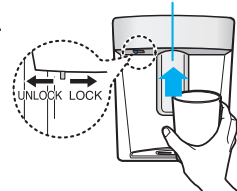


Fix water tank to the fridge door tightly. If not, water tank may not be operated well.

Place a glass underneath the water outlet and push gently against the dispenser lever with your glass. Make sure the glass is in line with the dispenser to prevent the water from bouncing out. Dispenser Lever



Check that the locking device is set to "unlock". Water can only be dispensed on this setting.



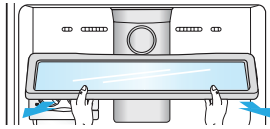
To get more space, you can remove the TWIST ICE MAKER, ICE STORAGE BIN and ICE CUBE TRAY. It does not affect thermal and mechanical characteristics. A declared storage volume of frozen food storage compartment is calculated with these components removed.



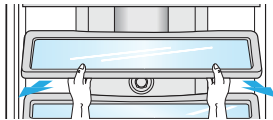
- If you plan to go away for a significant time, empty the refrigerator and turn it off. Wipe the excess moisture from the inside of the appliance and leave the doors open. This helps keep odor and mold from developing.
- If the refrigerator is not to be used for a long period of time, pull out the power plug.
 - Deterioration in the insulation may cause fire.

REMOVING THE REFRIGERATOR ACCESSORIES

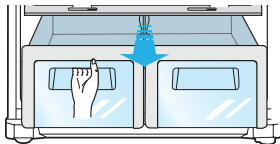
1. Pull out the ice tray first and then lift up the front part of freezer shelf and pull it out forward.



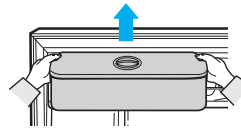
2. Lift up the fridge shelf and pull it forward up the fridge shelf and pull it forward.



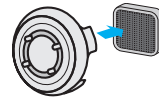
3. Lift up the vegetable bin lid and pull it forward. Pull out vegetable box while lifting it up pulling forward after it has reached the middle of the slide.



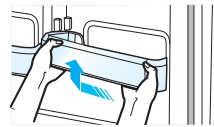
4. Lift up and pull out the water tank(optional) as shown in the diagram.



5. Pull it out while pressing the end of the sill on the low temperature catalyzing deodorizer.



6. Lift up and pull out the door guards.



- Before removing any accessories, make sure that no food is in the way. When possible, remove the food altogether to reduce the risk of accidents.

- To get the best energy efficiency of this product, please leave all selves, drawers and baskets on their original position like as illustration in page (13.)

CLEANING THE REFRIGERATOR



WARNING Do not use Benzene, Thinner or Clorox™ for cleaning. They may damage the surface of the appliance and can create a risk of fire.



CAUTION Do not spray the refrigerator with water while it is plugged in, as it may cause an electric shock. Do not clean the refrigerator with benzene, thinner or car detergent for risk of fire.

REPLACING THE INTERIOR LIGHT



CAUTION For LED lamp, please contact service engineer to replace it.

14_ operating


troubleshooting

PROBLEM	SOLUTION
The appliance is not operating at all or the temperature is too high.	<ul style="list-style-type: none"> • Check that the power plug is correctly connected. • Is the temperature control on the front panel correctly set? • Does sun shine on the appliance or are there heat sources nearby? • Is the back of the appliance too near to the wall?
The food in the refrigerator is frozen.	<ul style="list-style-type: none"> • Is the temperature control on the front panel set to the coldest temperature? • Is the surrounding temperature too low? • Did you put food with a high water content in the refrigerator?
There are unusual noises.	<ul style="list-style-type: none"> • Check that the appliance is installed on a stable, level floor. • Is the back of the appliance too near to the wall? • Have any foreign objects fallen behind or under the appliance? • Is the noise coming from the compressor in the appliance? • A ticking sound may be heard inside the appliance; this is normal. This sound occurs when the various accessories contract or expand.
The front corners and sides of the appliance are warm and condensation starts to form.	<ul style="list-style-type: none"> • Heat-proof pipes are installed in the front corners of the appliance to prevent condensation from forming. When the surrounding temperature rises, this may not always be effective. However, this is not abnormal. • In very humid weather, condensation may form on the outer surface of the appliance when the moisture in the air comes into contact with the cool surface of the appliance.
You can hear a liquid babbling in the appliance.	<ul style="list-style-type: none"> • This is the refrigerant, which cools the inside of the appliance.
There is a bad smell inside the appliance.	<ul style="list-style-type: none"> • Has a food item spoiled? • Make sure that strong smelling food (for example, fish) is wrapped so that it is airtight. • Clean out your freezer periodically and throw away any spoiled or suspect food.
There is a layer of frost on the appliance walls.	<ul style="list-style-type: none"> • Is the air outlet on the appliance plugged in? • Space the food out as much as possible to improve ventilation. • Is the door fully closed?
Condensation forms on the inside wall of the appliance and around vegetables.	<ul style="list-style-type: none"> • Food with a high water content is stored uncovered with a high humidity level or the door has been left open for a long time. • Store the food with a cover or in sealed containers.


Ambient Room Temperature Limits

This refrigerator is designed to operate in ambient temperatures specified by its temperature class marked on the rating plate.

Class	Symbol	Ambient Temperature range (°C)
Extended Temperate	SN	+10 to +32
Temperate	N	+16 to +32
Subtropical	ST	+16 to +38
Tropical	T	+16 to +43

 Internal temperatures may be affected by such factors as the location of the refrigerator, ambient temperature and the frequency with which you open the door. Adjust the temperature as required to compensate for these factors.

English **Correct Disposal of This Product**
(Waste Electrical & Electronic Equipment)
(Applicable in the European Union and other European countries with separate collection systems)



This marking on the product, accessories or literature indicates that the product and its electronic accessories (e.g. charger, headset, USB cable) should not be disposed of with other household waste at the end of their working life. To prevent possible harm to the environment or human health from uncontrolled waste disposal, please separate these items from other types of waste and recycle them responsibly to promote the sustainable reuse of material resources.

Household users should contact either the retailer where they purchased this product, or their local government office, for details of where and how they can take these items for environmentally safe recycling.

Business users should contact their supplier and check the terms and conditions of the purchase contract. This product and its electronic accessories should not be mixed with other commercial wastes for disposal.

Contact SAMSUNG WORLD WIDE

If you have any questions or comments relating to Samsung products, please contact the SAMSUNG customer care center.

COUNTRY	CALL	Web site
AUSTRALIA	1300 362 603	www.samsung.com/au
COLOMBIA	01-8000112112	www.samsung.com.co
EIRE	0818 717 100	www.samsung.com/ie
HONG KONG	(852) 3698-4698	www.samsung.com/hk www.samsung.com/hk_en/
INDIA	3030 8282, 1800 110011, 1-800-3000-8282,1800 266 8282	www.samsung.com/in
MALAYSIA	1800-88-9999	www.samsung.com/my
NEW ZEALAND	0800 SAMSUNG (726-7864)	www.samsung.com/nz
PANAMA	800-7267	www.samsung.com/latin
PHILIPPINES	1800-10-SAMSUNG (726-7864)	www.samsung.com/ph
SINGAPORE	1800-SAMSUNG (726-7864)	www.samsung.com
SOUTH AFRICA	0860-SAMSUNG (726-7864)	www.samsung.com
U.K	0330 SAMSUNG (726-7864)	www.samsung.com
VIETNAM	1 800 588 889	www.samsung.com

Code No. DA99-01697A REV(0.8)