



# Refrigerator user manual

**Planet  
First** 100%  
Recycled Paper

This manual is made with 100% recycled paper.

English

imagine the possibilities

Thank you for purchasing a Samsung product.  
To receive a more complete service,  
please register your product at  
[www.samsung.com/register](http://www.samsung.com/register)

**SAMSUNG**

Free Standing Appliance

# safety information

## SAFETY INFORMATION



- Before operating the appliance, please read this manual thoroughly and retain it for your reference.
- Because these following operating instructions cover various models, the characteristics of your refrigerator may differ slightly from those described in this manual.

## CAUTION/WARNING SYMBOLS USED

	Indicates that a danger of death or serious injury exists.
	Indicates that a risk of personal injury or material damage exists.
	Represents something you must NOT do.
	Represents something you must NOT disassemble.
	Represents something you must NOT touch.
	Represents something you must follow.
	Indicates that you must disconnect the power plug from the socket.
	Represents a ground is needed to prevent electric shock.
	It is recommended that this symbol be handled by service man.

**These warning signs are here to prevent injury to you and others.**

**Please follow them carefully.**

**After reading this section, keep it in a safe place for future reference.**

## CE NOTICE

This product has been determined to be in compliance with the Low Voltage Directive (2006/95/ EC), the Electromagnetic Compatibility Directive (2004/108/EC) and the Eco-Design Directive(2009/125/EC) implemented by Regulation (EC) No 643/2009 of the European Union.

## 2\_ safety information

- This refrigerator must be properly installed and located in accordance with the manual before it is used.
- Use this appliance only for its intended purpose as described in this instruction manual.
- We strongly recommend that any servicing be performed by a qualified individual.
- R600a or R134a can be used as a refrigerant. Check the compressor label on the rear of the appliance and the rating label inside the fridge to see which refrigerant is used for the refrigerator.



- In case of R600a refrigerant, this gas is natural gas with high environmental compatibility that is, however, also combustible. When transporting and installing the appliance, care should be taken to ensure that no parts of the refrigerating circuit are damaged.
- Refrigerant squirting out of the pipes could ignite or cause an eye injury. If a leak is detected, avoid any naked flames or potential sources of ignition and air the room in which the appliance is standing for several minutes.



- In order to avoid the creation of a flammable gas-air mixture if a leak in the refrigerating circuit occurs, the size of the room in which the appliance may be sited depends on the amount of refrigerant used.
- Never start up an appliance showing any signs of damage. If in doubt, consult your dealer.
- The room must be 1m<sup>3</sup> in size for every 8g of R600a refrigerant inside the appliance.
- The amount of refrigerant in your particular appliance is shown on the identification plate inside the appliance.
- Please dispose of the packaging material for this product in an environmentally friendly manner.
- Pull the power plug out of the socket before changing the interior light of the refrigerator.
- Otherwise, there is a risk of electric shock.
- This appliance is not intended for use by persons (including children) with reduced physical, sensory or mental capabilities, or lack of experience and knowledge, unless they have been given supervision or instruction concerning use of the appliance by a person responsible for their safety.
- Children should be supervised to ensure that they do not play with the appliance.

## SEVERE WARNING SIGNS



- Do not install the refrigerator in a damp place or place where it may come in contact with water or gas.
- Deteriorated insulation of electrical parts may cause an electric shock or fire.
- Do not place this refrigerator in direct sunlight or expose to the heat from stoves, room heaters or other appliance.
- Allow sufficient space to install the refrigerator on a flat surface.
- If your refrigerator is not level, the internal cooling system may not work correctly.
- Do not plug several appliances into the same power socket. The refrigerator should always be plugged into its own individual electrical socket which has a voltage rating that matched the rating plate.
- This provides the best performance and also prevents overloading house wiring circuits, which could cause a fire hazard from overheated wires.
- Never unplug your refrigerator by pulling on the power cord. Always grip plug firmly and pull - Damage to the cord may cause a short-circuit, fire and/or electric shock.
- Make sure that the power plug is not squashed or damaged by the back of the refrigerator.
- Do not bend the power cord excessively or place heavy articles on it.
- This constitutes a fire hazard.
- Have the power cord repaired or replaced immediately by the manufacturer or its service agent if power cord has become frayed or damaged.
- Do not use a cord that shows cracks or abrasion damage along its length or at either end.
- If the power cord is damaged, have it replaced immediately by the manufacturer or its service agent.
- When moving the refrigerator, be careful not to roll over or damage the power cord.
- Do not insert the power plug with wet hands.
- Unplug the refrigerator before cleaning and making repairs.
- Do not use a wet or damp cloth when cleaning the plug.
- Remove any foreign matter or dust from the power plug pins.
- Otherwise there is a risk of fire.
- If the refrigerator is disconnected from the power supply, you should wait for at least ten minutes before plugging it back.
- If the wall socket is loose, do not insert the power plug.
- There is a risk of electric shock or fire.
- The appliance must be positioned so that the plug is accessible after installation.

- In the event of a gas leak (such as propane gas, LP gas, etc.), ventilate immediately without touching the power plug. Do not touch the appliance or power cord.
- Do not use a ventilating fan.
- A spark may result in an explosion or fire.
- Do not use a hair dryer to dry the inside of the refrigerator. Do not place a lighted candle in the refrigerator for removing bad odours.
- This may result in electric shock or fire.



- The refrigerator must be grounded.
- You must ground the refrigerator to prevent any power leakages or electric shocks caused by current leakage from the refrigerator.



- Never use gas pipes, telephone lines or other potential lightning rods as ground.
- Improper use of the ground plug can result in electric shock.
- Do not disassemble or repair the refrigerator by yourself.
- You run risk of causing a fire, malfunction and/or personal injury.
- If the appliance generates a strange noise, a burning or smell or smoke, unplug the power plug immediately and contact your nearest service centre.
- Keep ventilation opening in the appliance enclosure or mounting structure clear of obstruction.
- Do not use mechanical devices or any other means to accelerate the defrosting process, other than those recommended by the manufacturer.
- Do not damage the refrigerant circuit.
- Do not place or use electrical appliance inside the refrigerator/freezer, unless they are of a type recommended by the manufacturer.
- Before changing the interior light, unplug the appliance from the power supply.
- If you experience difficulty when changing the light, contact your service center.
- The appliance is not intended for use by persons (including children) with reduced physical, sensory or mental capabilities, or lack of experience and knowledge, unless they have been given supervision or instruction concerning use of the appliance by a person responsible for their safety.
- Children should be supervised to ensure that they do not play with the appliance.
- Do not let children hang on the door. If not, a serious injury may occur.
- Do not touch the inside walls of the freezer or products stored in the freezer with wet hands.
- This may cause frostbite.

- If the refrigerator is not to be used for a long period of time, pull out the power plug.
- Deterioration in the power cord insulation may cause fire.
- Do not store articles on the top of the appliance.
- When you open or close the door, the articles may fall and cause personal injury and/or material damage.

## CAUTION SIGNS

- This product is intended only for the storage of food in a domestic environment.
- Manufacturer's recommended storage times and expiry dates of frozen foods should be adhered to. Refer to relevant instructions
- Bottles should be stored tightly together so that they do not fall out.
- Do not place carbonated or fizzy drinks in the freezer compartment
- Do not overfill the refrigerator with food.
- When you open the door, an item may fall out and cause personal injury or material damage.
- Do not put bottles or glass containers in the freezer.
- When the contents freeze, the glass may break and cause personal injury.
- Do not spray inflammable gas near the refrigerator.
- There is a risk of explosion or fire.
- Do not directly spray water inside or outside the refrigerator.
- There is a risk of fire or electric shock.
- Do not store volatile or flammable substances in the refrigerator.
- The storage of benzene, thinner, alcohol, ether, LP gas and other such products may cause explosions.
- If you have a long vacation planned, it is advisable to empty the appliance or use the vacation function.
- Do not re-freeze frozen foods that have thawed completely.
- Do not store pharmaceuticals products, scientific materials or temperature-sensitive products in the refrigerator.
- Products that require strict temperature controls must not be stored in the refrigerator.
- Do not put a container filled with water on the refrigerator. If any foreign substance such as water has entered the appliance, unplug the power plug and contact your nearest service center.
- There is a risk of fire or electric shock.

## 4\_ safety information

## CAUTION SIGNS FOR CLEANING

- Do not insert your hands into the bottom area under the appliance.
- Any sharp edges may cause personal injury.
- Do not use a wet or damp cloth when cleaning the plug, remove any foreign material or dust from the power plug pins.
- Otherwise there is a risk of fire.

## WARNING SIGNS FOR DISPOSAL

- When disposing of this or other refrigerators, remove the door/door seals, door latch so that small children or animals cannot become trapped inside.
- Leave the shelves in place so that children may not easily climb inside.
- R600a or R134a is used as a refrigerant. Check the compressor label on the rear of the appliance or the rating label inside the fridge to see which refrigerant is used for your refrigerator. When this product contains flammable gas (Refrigerant R600a) contact your local authority in regard to safe disposal of this product.
- Cyclopentane is used as a insulation blowing gas. The gases in insulation material require special disposal procedure. Please contact your local authorities in regard to the environmentally safe disposal of this product. Ensure that none of the pipes on the back of the appliances are damaged prior to disposal. The pipes shall be broke in the open space.



In the event of a power failure, call the local office of your Electricity Company and ask how long it is going to last.

Most power failures that are corrected in an hour or two will not affect your refrigerator temperatures.

However, you should minimize the number of door openings while the power is off.

But should the power failure last more than 24hours, remove all frozen food.

For doors or lids fitted with locks and keys, the keys be kept out of the reach of children and not in the vicinity of the refrigerating appliance, in order to prevent children from being locked inside.

## ADDITIONAL TIPS FOR PROPER USAGE

- Allow the appliance to stand for 2 hours after installation.
- To get best performance of product,
  - Do not place foods too closely in front of the vents at the rear of the appliance as it can obstruct free air circulation in the freezer compartment.
  - Wrap the food up properly or place it in airtight containers before put it into the fridge freezer
  - Do not put any newly introduced food for freezing near to already frozen food.
- There is no need to disconnect the refrigerator from the power supply if you will be away for less than three weeks. But, remove all the food if you are going away for three weeks or more. Unplug the refrigerator and clean it, rinse and dry.
- The appliance might not operate consistently (possibility of defrosting of contents or temperature becoming too warm in the frozen food compartment) when sited for an extended period of time below the cold end of the range of temperatures for which the refrigerating appliance is designed.
- Do not store food which goes bad easily at low temperature, such as bananas, melons.
- Place the ice tray at the originally provided position by manufacturer in order to achieve optimal ice-freezing.
- Your appliance is frost free, which means there is no need to manually defrost your appliance, as this will be carried out automatically.
- Temperature rising during the defrost can comply with ISO requirement. But If you want to prevent an undue rise in the temperature of the frozen food while defrosting the appliance, please wrap the frozen food in several layers of paper such as newspaper.
- Any increase in temperature of frozen food during defrosting can shorten its storage life.

## Saving Energy Tips

- Install the appliance in a cool, dry room with adequate ventilation.  
Ensure that it is not exposed to direct sunlight and never put it near a direct source of heat (radiator, for example).
- Never block any vents or grilles on the appliance.
- Allow warm food to cool down before placing it in the appliance.
- Put frozen food in the refrigerator to thaw.  
You can then use the low temperatures of the frozen products to cool food in the refrigerator.
- Do not keep the door of the appliance open for too long when putting food in or taking food out.  
The shorter time for which the door is open, the less ice will form in the freezer.
- Clean the rear of the refrigerator regularly. Dust increases energy consumption.
- Do not set temperature colder than necessary.
- Ensure sufficient air exhaust at the refrigerator base and at the back wall of the refrigerator.  
Do not cover air vent openings.
- Allow clearance to the right, left, back and top when installing.  
This will help reduce power consumption and keep your energy bills lower.

# contents

<b>SETTING UP YOUR SIDE-BY-SIDE REFRIGERATOR</b> .....	6
<b>OPERATING THE SAMSUNG SIDE-BY-SIDE REFRIGERATOR</b> .....	10
<b>TROUBLESHOOTING</b> .....	14

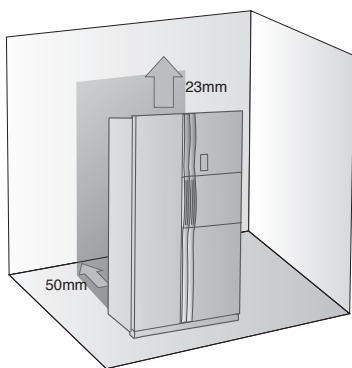
# setting up your side-by-side refrigerator

## GETTING READY TO INSTALL THE REFRIGERATOR

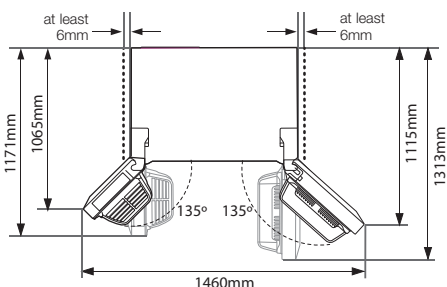
Congratulations on the purchase of your Samsung Side-By-Side Refrigerator. We hope you will enjoy the many state-of-the-art features and efficiencies that this new appliance has to offer.

### Selecting the best location for the refrigerator

- Select a location with easy access to the water supply.
  - Select a location without direct exposure to sunlight.
  - Select a location with level (or nearly level) flooring.
  - Select a location with enough space for the refrigerator doors to open easily.
  - Allow sufficient space to the right, left, back and top for air circulation.
- If your refrigerator is not level, the internal cooling system may not work correctly.
- Refer to drawing and dimensions below for overall space required for use.
- Please ensure that appliance can be moved freely in the event of maintenance & service.



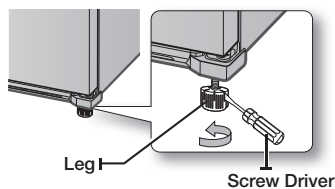
6\_ setting up



### When moving your refrigerator

To prevent floor damage be sure the front levelling legs are in the up position (above the floor). Refer to 'Levelling the refrigerator' in the manual (at page 8).

To protect the finish of the flooring, place the protection sheet such as packing carton under the refrigerator.



**CAUTION** When installing, servicing or cleaning behind the refrigerator, be sure to pull the unit straight out and push back in straight after finishing.

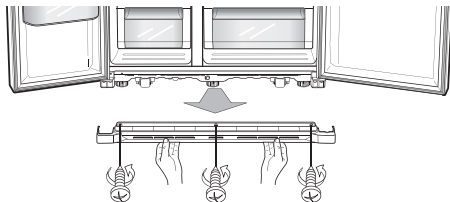


## SETTING UP THE REFRIGERATOR DOORS

If your entrance won't allow the refrigerator to pass easily through it, you can remove the doors.

### Removing the Front Leg Cover

First, open both the freezer and refrigerator doors, and then take off the front leg cover by turning the three screws counter-clockwise.

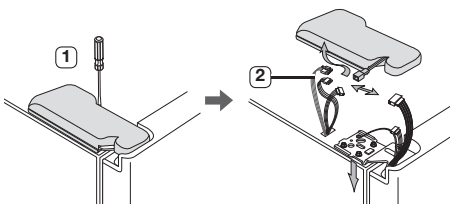


### Removing the freezer door

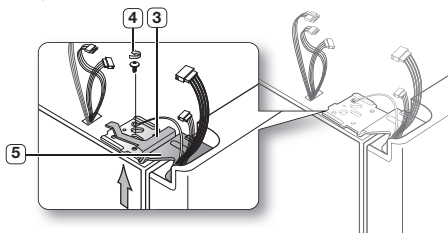
A few things to mention first.

- Make sure that you lift the door straight up so the hinges are not bent or broken.
- Be careful not to pinch the water tubing and wire harness on the door.
- Place doors on a protected surface to prevent scratching or damage.

1. With the Freezer door closed, remove the upper hinge cover **1** using a screwdriver, and then disconnect the wires by gently pulling them apart **2**.

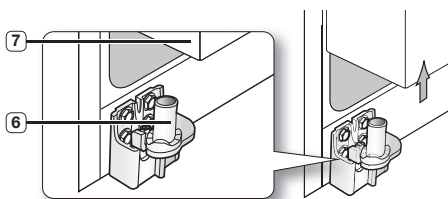


2. Remove hinge bracket **3** and the ground screw **4** by turning counter-clockwise, and take off the upper hinge **5**. Be careful that the door does not fall on you as you are removing it.

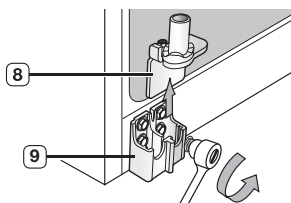


- ⚠** Be careful not to miss the parts of refrigerator.

3. Next, remove the door from the lower hinge **6** by carefully lifting the door straight up **7**.



4. Remove the lower hinge **8** from the bracket **9** by gently lifting the lower hinge upwards.

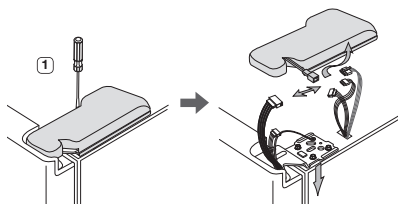


### Reattaching the freezer doors

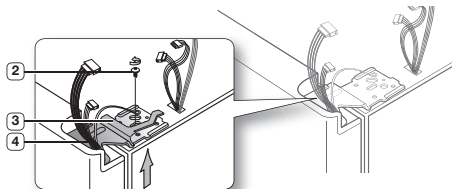
- ⚠** To reattach the freezer doors, assemble parts in reverse order.

## Removing the Fridge Door

1. With the door closed, remove the upper hinge cover **1** using a screwdriver.

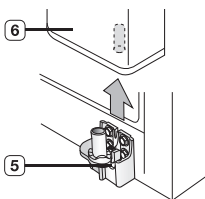


2. Remove hinge bracket **3** and the ground screw **2** by turning counter-clockwise, and take off the upper hinge **4**. Be careful that the door does not fall on you as you are removing it.

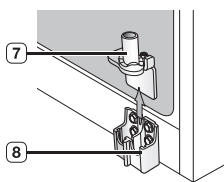


**!** Be careful not to miss the parts of refrigerator.

3. Remove the door from the lower hinge **5** by lifting the door straight up **6**.



4. Remove the lower hinge **7** from the bracket **8** by gently lifting the lower hinge upwards.



## Reattaching the freezer doors

**!** To reattach the freezer doors, assemble parts in reverse order.

8\_ setting up

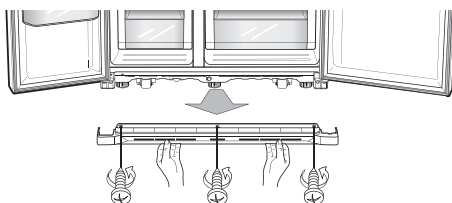
## LEVELLING THE REFRIGERATOR

Now that the doors are back on the refrigerator, you want to make sure the refrigerator is level so that you can make final adjustments. If the refrigerator is not level, it will not be possible to get the doors perfectly even.

**✓** The front of the refrigerator is also adjustable.

### Before levelling the refrigerator, remove the front leg cover

Open both the freezer and fridge doors, and then take off the front leg cover by turning the three screws counter-clockwise.

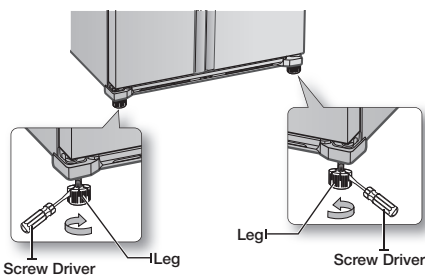


### When the Freezer door is lower than the fridge

Insert a flat-blade screwdriver into a slot on the Leg, turn it clockwise or counter clockwise to level the freezer.

### When the Freezer door is higher than the fridge

Insert a flat-blade screwdriver into a slot on the Leg, turn it clockwise or counter clockwise to level the fridge.

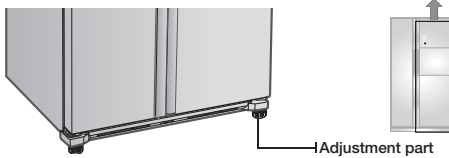


**✓** Refer to the next section for the best way to make very minor adjustments to the doors.

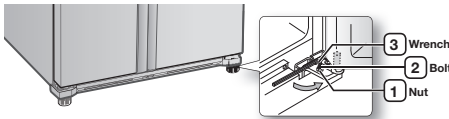


## MAKING MINOR ADJUSTMENTS TO THE DOORS

Remember, a level refrigerator is necessary for getting the doors perfectly even. If you need help, review the previous section on levelling the refrigerator.



For minor adjustments the process is the same as detailed above. Open the doors and adjust them, one at a time, as follows:



1. Unscrew the nut **1** from the lower hinge until it reaches the upper end of the bolt **2**.

When you release the nut **1**, make sure that you use the Allen wrench provided **3** to loosen the bolt **2** in a counter-clockwise direction. You should then be able to unscrew the nut **1** with your fingers.

2. Adjust the height difference between the doors by turning the bolt **2** clockwise or counter clockwise .

When you turn clockwise , the door will move up.

3. After adjusting the doors, turn the nut **1** clockwise until it reaches the lower end of the bolt, then tighten the bolt again with the wrench **3** to fix the nut in place **1**.

If you do not secure the nut firmly, the bolt may release.

## SETTING UP THE REFRIGERATOR

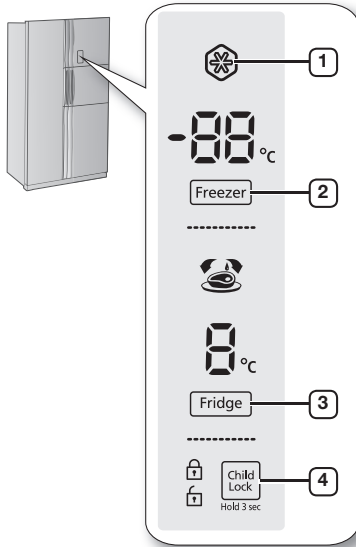
Now that you have your new refrigerator installed and in place, you are ready to set up and enjoy the full features and functions of the appliance.

By completing the following steps, your refrigerator should be fully operational. If not, first check the power supply and electricity source or try the troubleshooting section at the back of this user guide. If you have any further questions, contact your Samsung Electronics call center.

1. Place the refrigerator in an appropriate location with reasonable clearance between the wall and the refrigerator. Refer to installation instructions in this manual.
2. Once the refrigerator is plugged in, make sure the interior light comes on when you open the doors.
3. Set the temperature control to the coldest temperature and wait for an hour. The freezer should get slightly chilled and the motor should run smoothly.
4. After powering the refrigerator, it will take a few hours to reach the appropriate temperature. Once the refrigerator temperature is sufficiently cool, you can store food and drink in the refrigerator.

# operating the SAMSUNG side-by-side refrigerator

## USING THE CONTROL PANEL / DIGITAL DISPLAY



<p><b>1 Power Freeze</b></p>	<p>Speeds up the time needed to freeze products in the freezer. This can be helpful if you need to quickly freeze items that spoil easily or if the temperature in the freezer has warmed dramatically (For example, if the door was left open). This Function must be activated before putting large items in freezer compartment at least 24 hours before.</p>
<p><b>2 Freezer Button</b></p>	<p>Press the <b>Freezer</b> button to set the freezer to your desired temperature. You can set the temperature between -14°C and -23°C.</p>


<p><b>3 Fridge Button</b></p>	<p>Press the <b>Fridge</b> button to set the fridge to your desired temperature. You can set temperature between 1°C and 7°C.</p>
<p><b>4 Child Lock Button</b></p>	<p>By pressing this button for 3 second, all buttons will be locked. To cancel this function, press this button again.</p>

## USING THE DIGITAL DISPLAY

When not in use the Display will turn off, this is normal. Display will turn on When you keep press the Child Lock button.

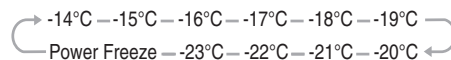
## Power Freeze

This icon will light up when you keep press the Freezer button. "Power Freeze" is great for times when you need a lot of ice. When you have enough, just press the button again to cancel the "Power Freeze" mode.

 When you use this function the energy consumption of the refrigerator will increase. Remember to turn it off when you don't need it and return the freezer to your original temperature setting.

## Freezer

Press the **Freezer** button to set the desired temperature from the range between -14°C and -23°C. Default set temperature is set on -20°C and each time you press the **Freezer** button temperature will change in following order and temperature indicator will display the desired temperature.

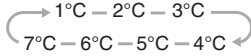


## Fridge

Press the **Fridge** button to set the desired temperature from the range between 1°C and 7°C.




Default set temperature is set on 3°C and each time you press the **Fridge** button, temperature will change in following order and temperature indicator will display the desired temperature.



## Child Lock

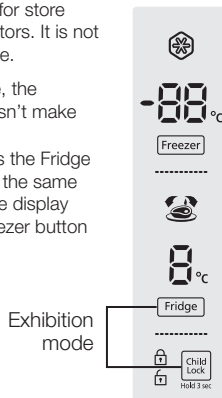
This icon will light up when you activate the Child Lock function by pressing Child Lock button. Press this button again to reactivate. Use this function to prevent children from tampering with temperature and filter settings.

## Exhibition Mode (OPTIONAL)

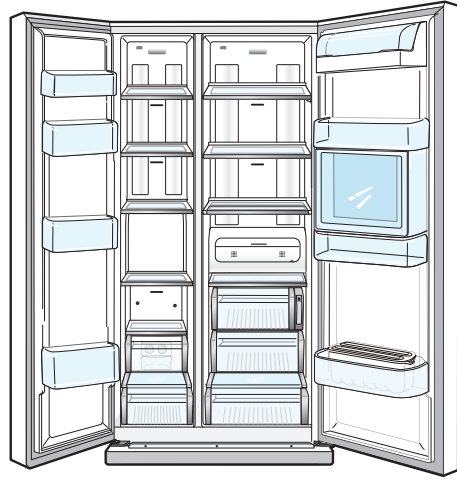
**CAUTION**  This function is for store display refrigerators. It is not for customer use.

In case of Exhibition Mode, the refrigerator works but doesn't make cool air.

To cancel this mode, press the Fridge and Child Lock buttons at the same time for 6 seconds until the display blinks. Then press the Freezer button and the unit will now cool.



## STORING FOOD



## USING THE COOLSELECT ZONE™ DRAWER (OPTIONAL)

The CoolSelect Zone™ Drawer is designed to make your busy life just a little bit easier.

### Soft Freeze

When “**Soft Freeze**” is selected on the CoolSelect Zone™ Drawer, the temperature on the drawer digital panel displays -5°C, regardless of the overall temperature setting of the refrigerator. This feature helps keep meat and fish fresh for longer.

### 0 Zone

When “**0 Zone**” is selected, the temperature of the CoolSelect Zone™ Drawer is kept at 0°C, regardless of the overall temperature setting of the refrigerator. This feature also helps keep meat or fish fresh for longer.

### Thaw

When “**Thaw**” is selected, warm and cold air is alternately blown into the CoolSelect Zone™ Drawer. Depending on the weight of the frozen food, you can select a 4 hrs, 6 hrs, 10 hrs, and 12 hrs thawing time.

When “**Thaw**” ends, food is in a half-frozen state, making it easy to cut for cooking. In addition, when “**Thaw**” ends, the CoolSelect Zone™ Drawer returns to the original “**0 Zone**” condition. To cancel this function mid-cycle, just press any button besides “**Thaw**”.

Here are the approximate thawing times of meat and fish by weight (and based on a 25.4mm (1in.) thickness). This chart represents the total weight of food in the CoolSelect Zone™ Drawer.

THAW TIME	WEIGHT
4hours	363g (0.8lb)
6hours	590g (1.3lb)
10hours	771g (1.7lb)
12hours	1000g (2.2lb)


### Quick Cool


You can use the “**Quick Cool**” operation with the CoolSelect Zone™ Drawer to quickly cool 1–3 canned beverages in about an hour. When the “**Quick Cool**” process ends, the CoolSelect Zone™ Drawer automatically returns to the previously set temperature.

To cancel this operation, press the Quick Cool button again and the CoolSelect Zone™ Drawer returns to the previously set temperature.

### Cool

When “**Cool**” is selected, the temperature in the CoolSelect Zone™ Drawer will be the same as the overall temperature setting of the refrigerator. The drawer digital panel shows the same temperature as that of the refrigerator display panel. Since the “**Cool**” function mimics the refrigerator temperature, you have extra general storage space.

 Depending on the size and thickness of the meat or fish, thawing times may vary.

 When “**Thaw**” is in operation, any items that you do not want affected should be moved out of the drawer.

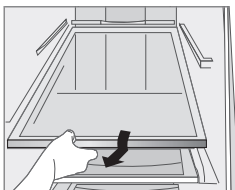


## REMOVING THE FREEZER/ FRIDGE ACCESSORIES

Cleaning and rearranging the interior of the freezer is a simple.

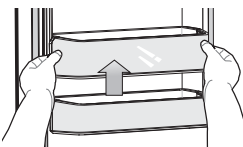
### 1. Shelves (Freezer/Fridge)

Remove the Glass shelf by pulling the shelf out as far as it will go. Then, gently lift it down and remove it.



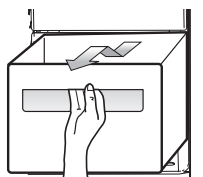
### 2. DOOR BIN

Remove the Door Bin by holding the door bin with both hands and then gently lift it up.



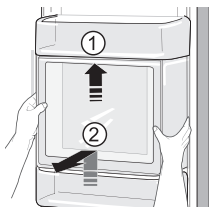
### 3. DRAWER

Remove the Drawer by pulling it out and slightly lifting it up.



### 4. Beverage Station (Fridge)

- Lift up the upper bin at the top of the fridge and pull it out.
- After pressing the cover wrapped with both hands, remove the beverage station cover by pulling toward up.



- Do not use excessive force when removing the cover. Otherwise, the cover may break and cause injury.
- Before removing any accessories, make sure that no food is in the way. When possible, remove the food altogether to reduce the risk of accidents.
- To get the best energy efficiency of this product, please leave all selves, drawers and baskets on their original position like as illustration in page (11)

## CLEANING THE REFRIGERATOR



- Do not use Benzene, Thinner or Clorox™ for cleaning. They may damage the surface of the appliance and can create a risk of fire.
- Do not spray the refrigerator with water while it is plugged in, as it may cause an electric shock. Do not clean the refrigerator with benzene, thinner or car detergent for risk of fire.

## CHANGING THE INTERIOR LIGHTS



- Do not disassemble or replace the LED type Lighting.
- To change the LED Type Lighting contact Samsung service center or your authorised Samsung dealer.

## USING THE DOORS

The refrigerator doors are equipped with a door opening and closing feature that ensures that the doors close all the way and are securely sealed. After opening beyond a certain point, the door will "catch" and remain open. When the door is ajar ahead of the catch that allows it to stay open, it will close automatically.

# troubleshooting

PROBLEM	SOLUTION
<b>The refrigerator does not work at all or it does not chill sufficiently.</b>	<ul style="list-style-type: none"> <li>• Check that the power plug is properly connected.</li> <li>• Is the temperature control on the display panel set to the correct temperature? Try setting it to a lower temperature.</li> <li>• Is the refrigerator in direct sunlight or located too near a heat source?</li> <li>• Is the back of the refrigerator too close to the wall and therefore keeping air from circulating?</li> </ul>
<b>The food in the fridge is frozen.</b>	<ul style="list-style-type: none"> <li>• Is the temperature control on the display panel set to the correct temperature? Try setting it to a warmer temperature.</li> <li>• Is the temperature in the room very low?</li> <li>• Did you store the food with a high water content in the coldest part of the fridge? Try moving those items into the body of the fridge instead of keeping them in the CoolSelect Zone™ drawer.</li> </ul>
<b>You hear unusual noises or sounds.</b>	<ul style="list-style-type: none"> <li>• Check that the refrigerator is level and stable.</li> <li>• Is the back of the refrigerator too close to the wall and therefore keeping air from circulating?</li> <li>• Was anything dropped behind or under the refrigerator?</li> <li>• A “ticking” sound is heard from inside the refrigerator. This is normal and occurs because various accessories are contracting or expanding in relation to the temperature of the refrigerator interior.</li> </ul>
<b>The front corners of the appliance are hot and condensation is occurring.</b>	<ul style="list-style-type: none"> <li>• Some heat is normal as anti-condensators are installed in the front corners of the refrigerator to prevent condensation.</li> <li>• Is the refrigerator door ajar? Condensation can occur when you leave the door open for a long time.</li> </ul>
<b>You can hear water bubbling in the refrigerator.</b>	<ul style="list-style-type: none"> <li>• This is normal. The bubbling comes from the refrigerant coolant liquid circulating through the refrigerator.</li> </ul>
<b>There is a bad smell in the refrigerator.</b>	<ul style="list-style-type: none"> <li>• Has a food item spoiled?</li> <li>• Make sure that strong smelling food (for example, fish) is wrapped so that it is airtight.</li> <li>• Clean out your freezer periodically and throw away any spoiled or suspect food.</li> </ul>
<b>Frost forms on the walls of the freezer.</b>	<ul style="list-style-type: none"> <li>• Is the air vent blocked? Remove any obstructions so air can circulate freely.</li> <li>• Allow sufficient space between the foods stored for efficient air circulation.</li> <li>• Is the freezer door closed properly?</li> </ul>


memo

---

## Ambient Room Temperature Limits

This refrigerator is designed to operate in ambient temperatures specified by its temperature class marked on the rating plate.

Class	Symbol	Ambient Temperature range (°C)
Extended Temperate	SN	+10 to +32
Temperate	N	+16 to +32
Subtropical	ST	+16 to +38
Tropical	T	+16 to +43

 Internal temperatures may be affected by such factors as the location of the refrigerator, ambient temperature and the frequency with which you open the door. Adjust the temperature as required to compensate for these factors.

**English**

**Correct Disposal of This Product  
(Waste Electrical & Electronic Equipment)**

*(Applicable in the European Union and other European countries with separate collection systems)*

 This marking on the product, accessories or literature indicates that the product and its electronic accessories (e.g. charger, headset, USB cable) should not be disposed of with other household waste at the end of their working life. To prevent possible harm to the environment or human health from uncontrolled waste disposal, please separate these items from other types of waste and recycle them responsibly to promote the sustainable reuse of material resources.

Household users should contact either the retailer where they purchased this product, or their local government office, for details of where and how they can take these items for environmentally safe recycling.

Business users should contact their supplier and check the terms and conditions of the purchase contract. This product and its electronic accessories should not be mixed with other commercial wastes for disposal.

## Contact SAMSUNG WORLD WIDE

If you have any questions or comments relating to Samsung products, please contact the SAMSUNG customer care center.

COUNTRY	CALL	Web site
AUSTRALIA	1300 362 603	<a href="http://www.samsung.com/au">www.samsung.com/au</a>
COLOMBIA	01-8000112112	<a href="http://www.samsung.com.co">www.samsung.com.co</a>
EIRE	0818 717 100	<a href="http://www.samsung.com/ie">www.samsung.com/ie</a>
HONG KONG	(852) 3698-4698	<a href="http://www.samsung.com/hk">www.samsung.com/hk</a> <a href="http://www.samsung.com/hk_en/">www.samsung.com/hk_en/</a>
INDIA	3030 8282, 1-800-3000-8282	<a href="http://www.samsung.com/in">www.samsung.com/in</a>
MALAYSIA	1800-88-9999	<a href="http://www.samsung.com/my">www.samsung.com/my</a>
NEW ZEALAND	0800 SAMSUNG (726-7864)	<a href="http://www.samsung.com/nz">www.samsung.com/nz</a>
PANAMA	800-7267	<a href="http://www.samsung.com/latin">www.samsung.com/latin</a>
PHILIPPINES	1800-10-SAMSUNG (726-7864)	<a href="http://www.samsung.com/ph">www.samsung.com/ph</a>
SINGAPORE	1800-SAMSUNG (726-7864)	<a href="http://www.samsung.com">www.samsung.com</a>
SOUTH AFRICA	0860-SAMSUNG (726-7864)	<a href="http://www.samsung.com">www.samsung.com</a>
U.K	0330 SAMSUNG (726-7864)	<a href="http://www.samsung.com">www.samsung.com</a>
VIETNAM	1 800 588 889	<a href="http://www.samsung.com">www.samsung.com</a>

Code No. DA99-03327A REV(0.2)