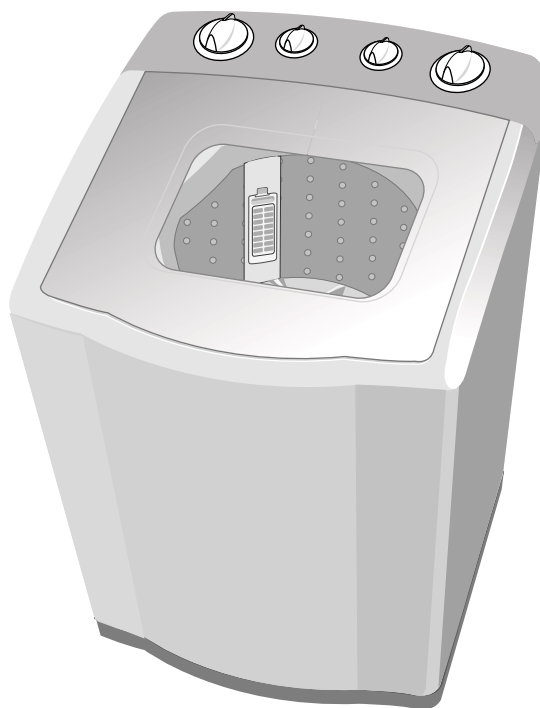


SAMSUNG

Owner's Instructions



Before operating the unit, please read this manual thoroughly, and retain for future reference.

FEATURES	1
SAFETY INSTRUCTIONS	2
DESCRIPTION OF PARTS	3
CONTROL PANEL	4
WASHING PROCEDURE	4
Wash	4
Spin	5
Rinse	5
INSTALLATION	6
Environment	6
Assembling the sound absorbing panel	6
Connecting the drain hose	6
Levelling	6
Cleaning the magic filter	6
How to put the fabric softener	6
LAUNDRY GUIDE	7
TROUBLESHOOTING	7
SPECIFICATIONS	8

FEATURES

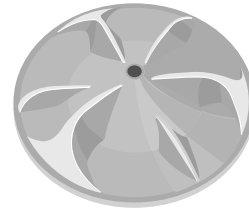
TRANSPARENT WINDOW

This Transparent Window is the new concept to solve the curiosity of users to see inside of washing machine while operation.

While operation, the laundry progress inside of washing machine can be checked by looking through the transparent window.

BOOMERANG PULSATOR

The Boomerang Pulsator helps water and detergent to go through fabrics efficiently while providing both the powerful water action to clean larger and heavier clothes and the gentle water action to clean all delicates with less wear and tear on clothes.



WATERFALL FLOW

The Waterfall Flow injected from under the pulsator cascades with full force back into the tub, pushing down any clothes that float right under the water surface. It is this Waterfall Flow that enables this washing machine to effectively wash large and heavy items, such as bluejeans and blankets.

MAGIC FILTER

This unique magic Filter ensures that all the lint inside the tub is captured for top quality filtering results to deliver consistently effective cleaning results.

SOFTENER DISPENSER

The Softener Dispenser releases the fabric softener at the appropriate time when the last rinsing proceeds.

SAFETY INSTRUCTIONS

WARNING!

To reduce the risk of fire, electric shock, or injury to persons when using your appliance, take care to adhere to the following precautions.

- ▶ **Where an unearthed power cord is fitted, be sure that the washer is grounded.**

To avoid electrical shock use metal piping for the ground connection.

Take care not to ground the washer to gas pipes or telephone cables due to the danger of explosion from lightning strikes.

- ▶ **During spinning, don't put your hand in the spin basket.**

Because the spin basket is rotating at the high speed, rotating parts may injure your hand.



- ▶ **Openings must not be obstructed by carpeting when the washing machine is installed on a carpeted floor.**
- ▶ **To minimize the possibility of electric shock, unplug this appliance from the power supply or disconnect the washer at the household distribution panel by removing the fuse while any maintenance or cleaning.**
- ▶ **The appliance is not intended for use by young children or infirm persons without supervision.**
- ▶ **Young children should be supervised to ensure that they do not play with the appliance.**
- ▶ **If the power supply cord is damaged, it must be replaced by the manufacturer or its service agent or a similar qualified person in order to avoid a hazard.**
- ▶ **Place clothes evenly into the washer as unevenly distributed laundry may cause excessive out-of-balance noise and vibration.**

- ▶ **Don't use excessively hot water. (50°C or more)**

Plastic parts may be deformed or damaged. Also, clothing may be deformed or bleached.

- ▶ **Before washing, check all pockets.**

If nails or pins remain in pockets, they may damage the washer or clothes.

- ▶ **Don't press the control panel with a sharp object.**

Panel damaged or malfunction may occur.

If the control panel for this washer is damaged, it must be replaced by a repair shop appointed by the manufacturer, as special purpose tools are required.

- ▶ **Do not operate this appliance if it is damaged, malfunctioning, partially disassembled, or has missing or broken parts, including a damaged cord or plug.**
- ▶ **Do not store or use gasoline or other flammable vapors and liquids in the vicinity of this or any other appliance.**
- ▶ **The instructions for use shall specify the maximum mass or dry cloth in kg, for which the appliance is designed.**
- ▶ **If the appliance is supplied from a cord extension set or electrical portable outlet device the cord extension set or electrical portable outlet device should be positioned so it is not subject to splashing or ingress of moisture.**

DESCRIPTION OF PARTS

LID
Be sure to keep the lid closed during washing and spinning.

FABRIC SOFTENER DISPENSER

BLEACH INLET

MAGIC FILTER
Lint will be collected in the filter during washing.

ADJUSTABLE LEGS
Adjust the length of the legs when installing the washer.

SPIN BASKET
Stainless **Option**

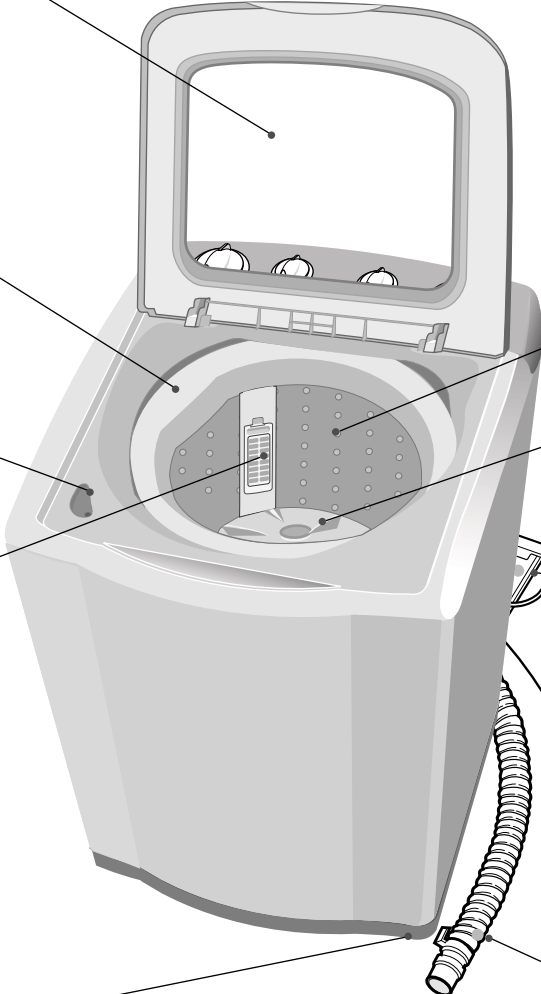
"BOOMERANG" PULSATOR

POWER CORD **Option**

SOUND ABSORPTION PANEL **Option**

GROUND LEAD **Option**
When the water pipe is metal, make sure to cover the end of the ground wire.

WATER DRAIN HOSE



CONTROL PANEL

1. WASH TIMER

This is used to set the wash time, 1-15 minutes.

2. WASH SELECTOR

You can wash laundry effectively by various agitation.

3. CYCLE SELECTOR

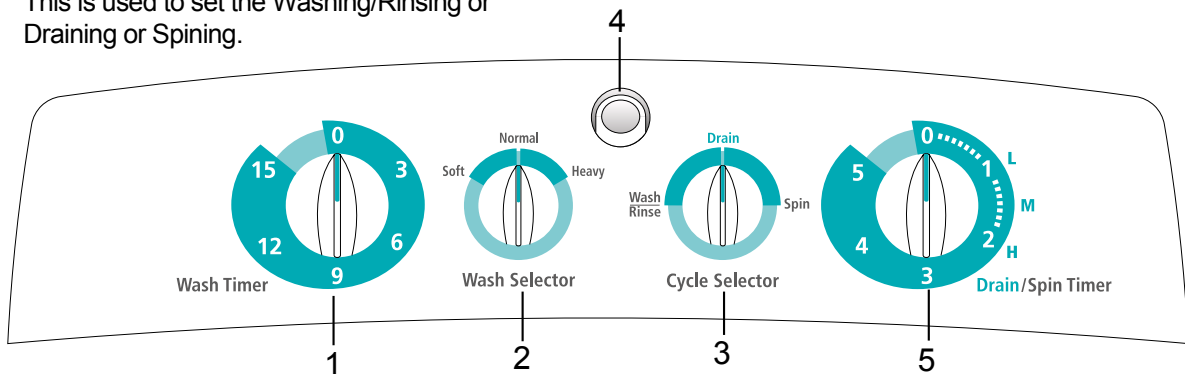
This is used to set the Washing/Rinsing or Draining or Spining.

4. WATER INTAKE

Connect water inlet to tap with a Suitable.

5. DRAIN/SPIN TIMER

This is used to set the drain time 1~2 minutes / spin time 1-5 minutes.



WASHING PROCEDURE

WASH

Before starting washing, check the following ;

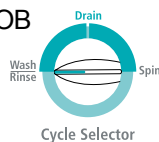
Connect the water supply hose to the water tap. Leave a tap open.

Plug the power cord in. Make sure to lay down the drain hose.

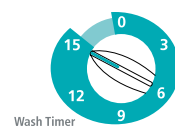
Put the laundry into the washer and add detergent, too.

Be careful not to overload, Use right detergent for the fabrics you are washing.

1. Set the CYCLE SELECTOR KNOB to "WASH / RINSE"



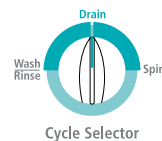
5. Set the WASH TIMER 1-15 minutes.



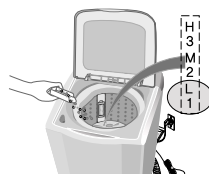
2. Select the WASH SELECTOR KNOB for desired mode.



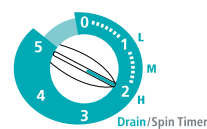
6. After washing, set the CYCLE SELECTOR KNOB to "DRAIN"



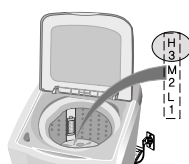
3. Fill water in the wash tub to the "L1" lower water level by carefully adjusting the tap water and add the detergent.



7. Set the DRAIN/SPIN TIMER for drain "H" for drain. Then, drain will be started. (In case of need more drain, repeat the no 2)



4. Put the cloths into the wash tub and set the same water pressure to fill the tub so as not to exceed "H3" level.



❖ Please adjust the drain time like H, M, L depend on the water level.

H : High water level.

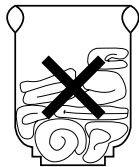
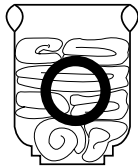
M : Medium water level level.

L : Low water level.

WASHING PROCEDURE

▶ SPIN

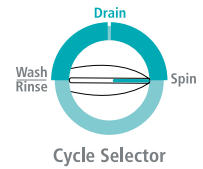
1. Distribute laundry evenly in the basket after drain.
(Uneven laundry may cause ABNORMAL NOISE.)
2. Distribute laundry evenly in the basket before spinning.
(Uneven laundry may cause ABNORMAL NOISE.)



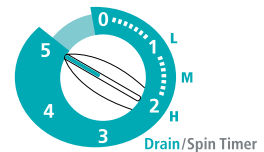
3. Close the lid



4. Set the CYCLE SELECTOR KNOB to "Spin"



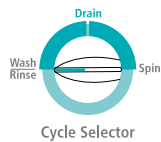
5. Set the DRAIN/SPIN TIMER 1-5 minutes.



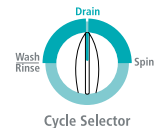
- ❖ In case of a abnormal vibration and noise. return the "DRAIN/SPIN TIMER" to the "0" postion and then Distribute laundry evenly.

▶ RINSE

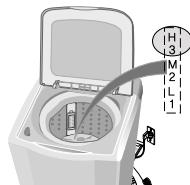
1. Set the CYCLE SELECTOR KNOB to "WASH RINSE"



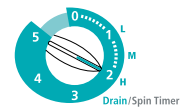
4. After finsing, set the CYCLE SELECTOR KNOB to "DRAIN"



2. Set the same water pressure to fill the tub so as not to exceed "H3" level.

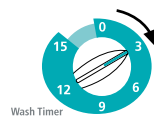


5. Set the DRAIN/SPIN TIMER for drain "H". Then, drain will be started.
(In case of need more drain, repeat the no 2)



- ❖ Please adjust the drain time like H, M, L depend on the water level.
H : High water level.
M : Medium water level
L : Low water level.

3. Set the WASH TIMER 2~3 minutes.



6. Repeat this cycle until water comes.
(2~3 cycle)

INSTALLTION

ENVIRONMENT

Leave some space

Maintain at least 10cm between the washer and the wall.

Place the washer on a sturdy flat surface.

If the washer is placed on an uneven or weak surface, noise or vibration occurs.

(Allowable is 1°)

Adjust the legs for even placement.

Never install the washer near water.

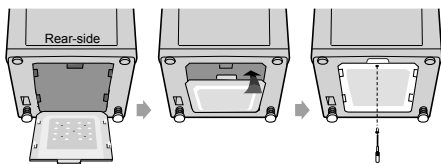
Do not place the washer in steamy rooms or where the washer is directly exposed to rain. Moisture may destroy the electrical insulation causing an electrical shock hazard.

Avoid direct sunlight or heaters.

As plastic and electrical components are affected by direct heat, never place the washer near furnaces, boilers, etc. Do not place under direct sunlight.

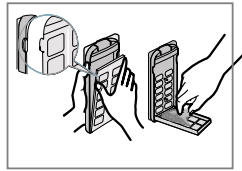
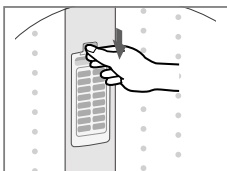
ASSEMBLING THE SOUND ABSORBING PANEL **Option**

Tilt the washer a little and lift up the panel until clicks, finally fix the panel with screw to the base as shown in the figure.

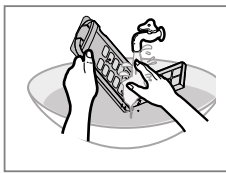


CLEANING THE MAGIC FILTER

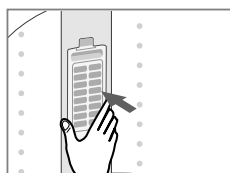
1. Push the upper part of the filter and pull in.
2. Open the cover as shown in the figure.



3. Clean the filter.

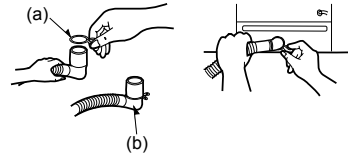


4. Close the cover and insert the lower part of the filter in the basket first and then push the filter with "click" sound.



CONNECTING THE DRAIN HOSE

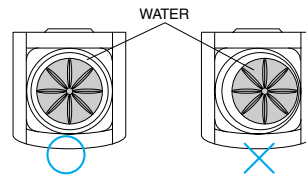
After pressing the joint ring(a), insert the drain hose(b) to drain direction.



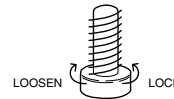
LEVELLING

SEE IF THE MACHINE PLACED LEVEL BY CHECKING THE POSITION OF THE WASHING TUB.

- Open the lid of the machine, pour water into the tub up to the level just below the pulsator, and adjust the legs so that the pulsator is positioned at the center of the water as shown in the figure.
- Place the machine more than 10cm away from the wall.



- Adjust the legs on feet for leveling.



How to put the FABRIC SOFTENER

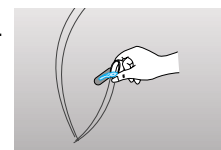
1. Case 1

Fill the water and then, put the "RINSE" into the basket for rinse cycle.

2. Case 2

In case of use Softener box, operate like following.

- 1) Put the Softener into the Softener box.
- 2) Operate following procedure.
Wash → Drain → Spin → Rinse1 → Drain → Spin → Rinse2 → Drain → Spin
- 3) Softener will be flowed into the basket at "Rinse2" cycle.
 - When a proper amount (one time does) of fabric softener is stored in the softener inlet, it is automatically put in at the last rinsig cylce.
 - Do not use detergent, bleach or starch into the Softener Inlet.
 - Using too much softener may produce unsatisfactory results.
 - Do not open the lid during the Spin Dry cycle. If added too early, its effectiveness will decrease.
 - Do not leave the softener into the Softener Dispenser for a long time. Because softner became stiff.



LAUNDRY GUIDE

WASHING TIME

KINDS OF CLOTHING	WASHING TIME
Extremely solid heavy fabric	10 to 15minutes
Linen, cotton, etc.	8 to 10minutes
Ordinary clothes (underwear, etc)	7minutes
Slightly solid synthetic fiber	2 to 5minutes
100% wool, mixed wool knitting, thin synthetic fiber with tags indicating hand washing	2 to 5minutes

SPIN TIME

TIME	TYPE OF LAUNDRY
1min.	Thin(synthetic fiber)
1~2min.	wool
3~5min.	cotton
5min	thick(cotton)

DRAIN TIME

TIME	WATER LEVEL
L	Low
M	Medium
H	High

DETERGENT

AMOUNT OF DETERGENT	WATER LEVEL
41g	Low (41 l)
48g	Medium (48 l)
56g	High (56 l)

- The amount of detergent is average. Follow the instruction detergent printed on the package for amount of detergent.
- Choose the amount of detergent depending on the fabric type.

TROUBLE SHOOTING

TROUBLE	CHECK POINT
Washing machine won't work.	Is the water tap opened? Is the washer plugged in? Is the power cut off? Is there enough water?
Clothes will not move freely.	Is the laundry overloaded?
Spinning does not work	Is the laundry spread evenly in the washer? Is the washer set on a sturdy flat surface? Is the lid closed completely?
Water dose not drain	Is the drain hose down? Is the drain hose frozen? Is the drain hose clogged? Is the lid closed completely?
Water is not supplied	Is the water tap opened? Is the water cut off? Is the water supply hose or hose connection clogged Is the water tap frozen?

IF YOU NEED HELP.

Do not hesitate to call your local samusng service center.

They will be willing to help you.

Be sure to give them your name, address, telephone number and the purpose of the call.

SPECIFICATIONS

RATED POWER CONSUMPTION	WASH	300W	STANDARD WATER LEVEL	HIGH	56 l
	SPIN	240W		MED	48 l
DIMENSIONS		W540 × D560 × H850mm			
WEIGHT		30kg			
WATER PRESSURE		0.05~0.78MPa (0.5~8.0kg-f/cm ²)	PULSATOR ROTATING SPEED	126 rpm	
RATING TIME		Washing : 1Hour Spinning : 15minutes	SPINNING TUB ROTATING SPEED	760 rpm	

CODE NO. : DC68-00541A