

MAINTAINING THE SOUND QUALITY

To obtain the best possible results from your cassette player, you must clean it regularly (heads, roller and drive capstan).

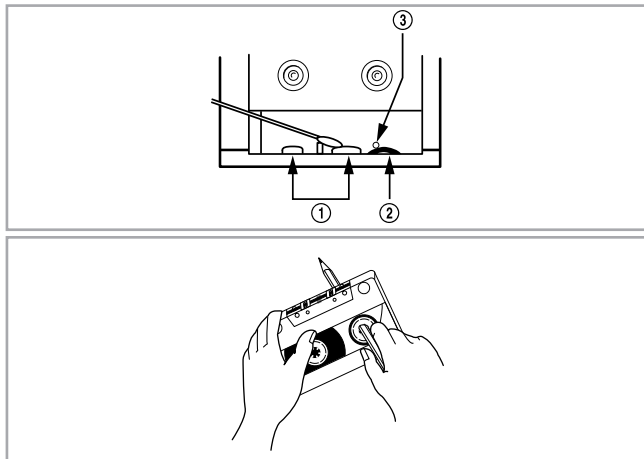
Open the deck by pressing the ST/EJ (■▲) button.

Use a cotton bud and a special cassette cleaning agent to clean the:

- ◇ Heads (①)
- ◇ Roller (②)
- ◇ Drive capstan (③)

To guarantee hours of enjoyable listening with your cassettes:

- ◇ Check that the tape in the cassette is always sufficiently taut
- ◇ Store your cassettes in a clean place, out of direct sunlight, where they will not be exposed to high temperatures
- ◇ Avoid using 120-minute cassettes as they are extremely fragile.



- 7 -

SPECIFICATIONS

RADIO

LW(OPTION)

Frequency range150 KHz ~ 290 kHz

SW(OPTION)

Frequency range6 MHz ~ 18 MHz

AM(MW)

Frequency range530 KHz ~ 1605 kHz

FM

Frequency range88 MHz ~ 108 MHz

TAPE DECK

Frequency response125 Hz ~ 6.3 kHz

GENERAL

Output power0.8 Watts

Dimensions264(W) x 145(H) x 135(D) mm



- 8 -

MEMO



- 9 -

SAMSUNG

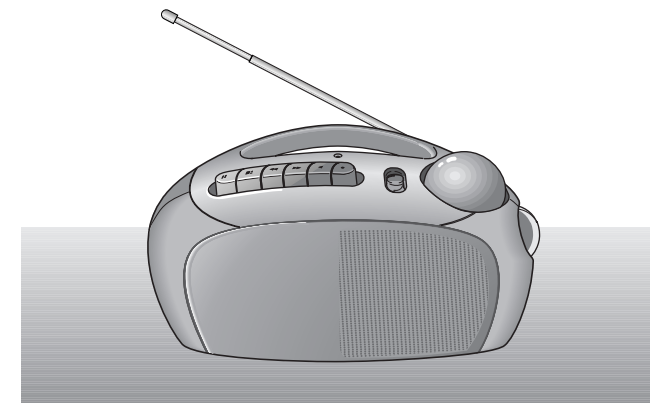
OPERATING INSTRUCTIONS

RC-29

Before operating the unit,
please read this manual thoroughly and
retain it for future reference.

SAMSUNG

ELECTRONICS



AH68-10352B

SAFETY WARNINGS



Use of controls, adjustments or performance of procedures other than those specified herein may result in hazardous radiation exposure.



This symbol indicates that dangerous voltage which can cause electric shock is present inside this unit.



This symbol alerts you to important operating and maintenance instructions accompanying unit.

WARNING: To reduce the risk of fire or electric shock, do not expose this appliance to rain or moisture.

CAUTION: To prevent electric shock, match wide blade of plug to wide slot, fully insert.

Wiring the Mains Power Supply Plug(UK Only)

IMPORTANT NOTICE

The mains lead on this equipment is supplied with a moulded plug incorporating a fuse. The value of the fuse is indicated on the pin face of the plug and if it requires replacing, a fuse approved to BS1362 of the same rating must be used.

Never use the plug with the fuse cover omitted. If the cover is detachable and a replacement is required, it must be of the same colour as the fuse fitted in the plug. Replacement covers are available from your dealer. If the fitted plug is not suitable for the power points in your house or the cable is not long enough to reach a power point, you should obtain a suitable safety approved extension lead or consult your dealer for assistance.

However, if there is no alternative to cutting off the plug, remove the fuse and then safely dispose of the plug. Do not connect the plug to a mains socket as there is a risk of shock hazard from the bared flexible cord.

Never attempt to insert bare wires directly into a mains socket. A plug and fuse must be used at all times.

IMPORTANT

The wires in the mains lead are coloured in accordance with the following code:-

BLUE = NEUTRAL BROWN = LIVE

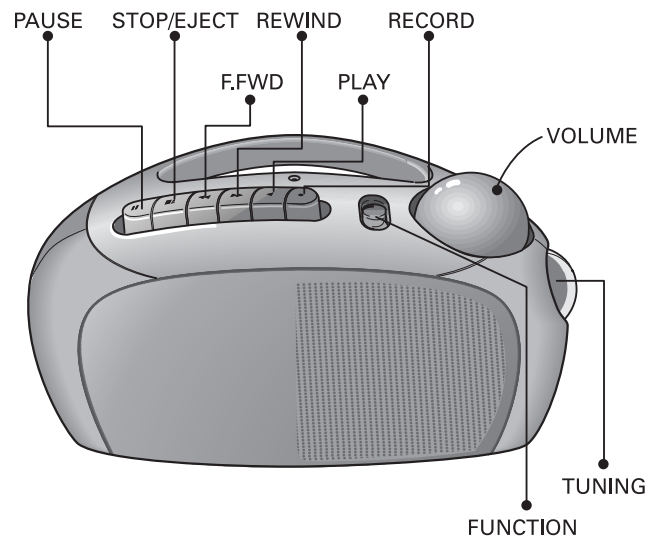
As these colours may not correspond to the coloured markings identifying the terminals in your plug, proceed as follows:-

The wire coloured BLUE must be connected to the terminal marked with the letter N or coloured BLUE or BLACK.
The wire coloured BROWN must be connected to the terminal marked with the letter L or coloured BROWN or RED.

WARNING: DO NOT CONNECT EITHER WIRE TO THE EARTH TERMINAL WHICH IS MARKED WITH THE LETTER E OR BY THE EARTH SYMBOL ⚡, OR COLOURED GREEN OR GREEN AND YELLOW.

- 10 -

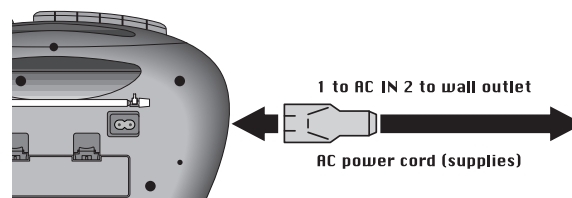
FRONT PANEL



- 1 -

POWER SOURCES

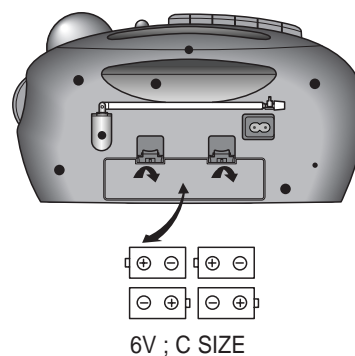
HOUSE CURRENT



The mains lead must be plugged into an appropriate socket. Before plugging your system into a mains socket, you must check the voltage setting, if the voltage of the socket does not correspond to the setting on the bottom of the unit, you may seriously damage your system.

* The nameplate indicating operating voltage, power consumption, Etc. is located at the bottom.

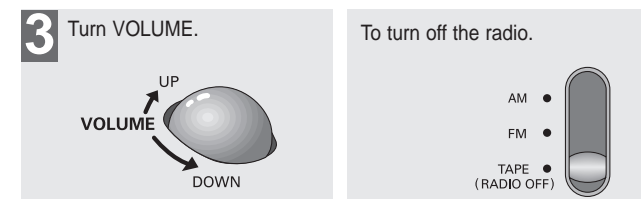
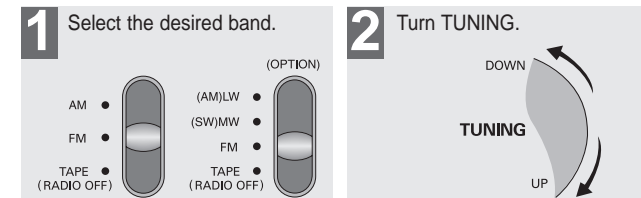
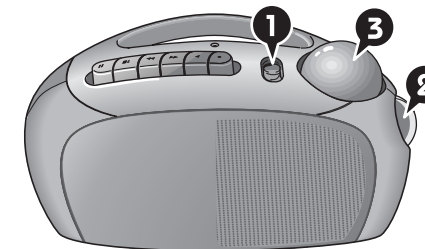
BATTERIES



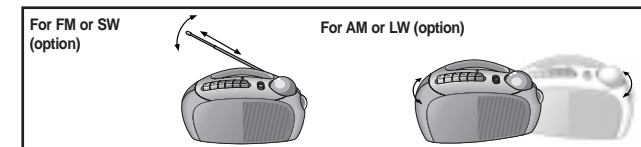
Note: The unit will not operate from the internal batteries while the AC power cord is connected to the unit.

- 2 -

LISTENING TO THE RADIO

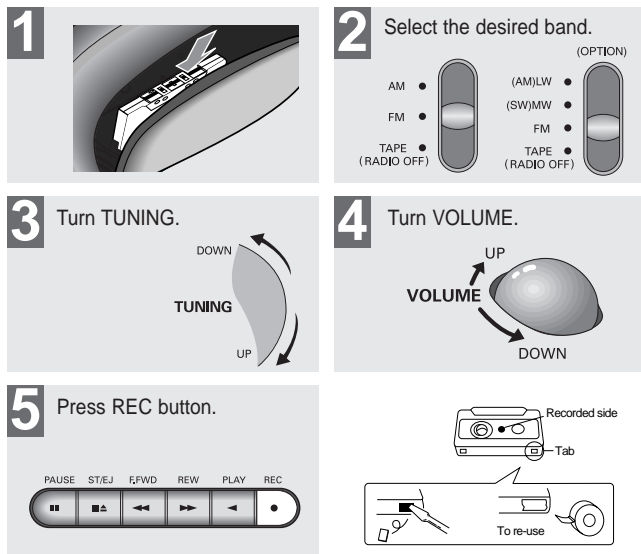
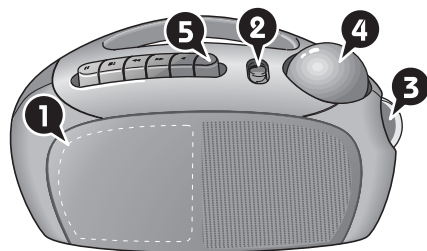


To improve broadcast reception. Reorient the antenna for FM or SW (option). Reorient the player itself for AM or LW(option).



- 3 -

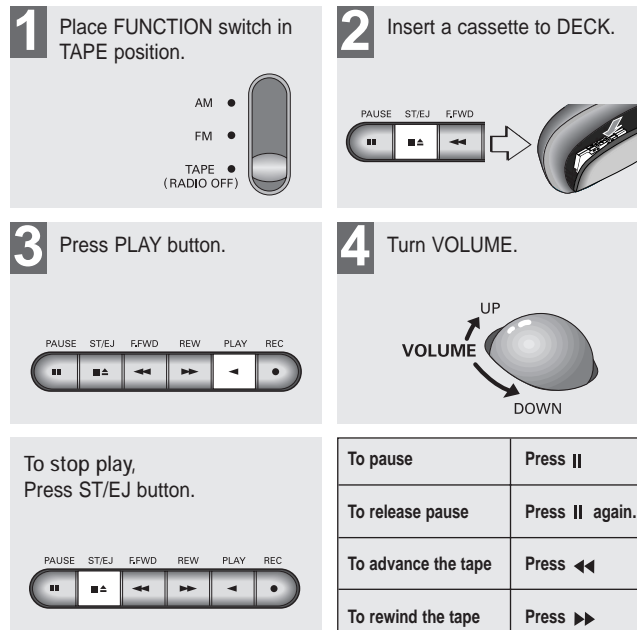
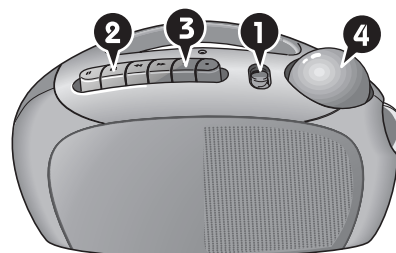
RECORDING FROM RADIO



To prevent accidental erasure. Break off the tab corresponding to the side which has been recorded on. Recording on that side will be protected.

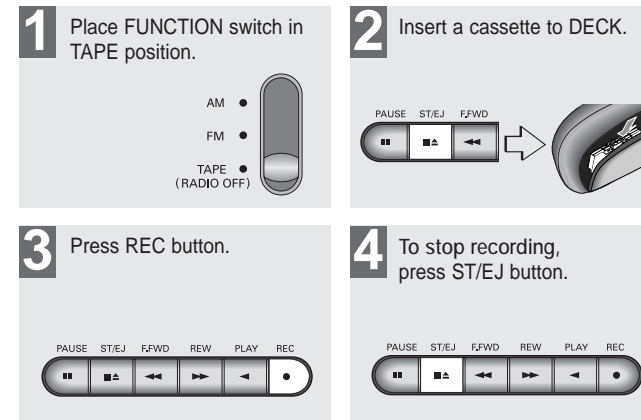
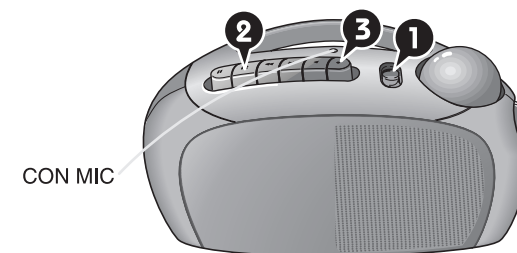
- 4 -

LISTENING TO THE CASSETTE



- 5 -

BUILT-IN MICROPHONE RECORDING



NOTE

Since this unit is built in the microphone with high sensitivity. (This recording can be available 3 to 5 meters apart from the unit.)

- 6 -