



# 삼성 컬러모니터

SAMTRON 95in(T)

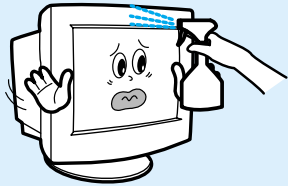


SAMTRON

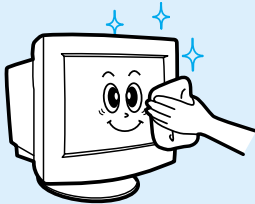
## 모니터를 깨끗하게 오래 사용 하시려면

[올바른 세척 방법]

1. 모니터 외관에 직접 세척제를 뿌리지 마세요.



2. 부드러운 천에 반드시 "추천 세척제"를 묻힌후 닦아주세요.



주의 : 알코올, 솔벤트가 다량 함유되거나, 일부 강한 성분이 함유된 계면 활성제를 사용시 모니터 외관의 변색, 갈라짐 또는 CDT 코팅면의 벗겨짐 등을 유발 할 수 있으므로 반드시 추천 세척제만을 사용하십시오.

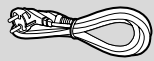
\*추천 세척제는 당사 서비스센터에서 구입 하실 수 있습니다.

## 구성품

\*부속품 이외의 별매품을 구입하려면 삼성전자 서비스센터로 연락하세요



모니터



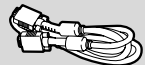
전원코드



드라이버 설치 디스켓



사용설명서/제품보증서



컴퓨터연결케이블



## 기본설치면

최적의 화면을 즐기시려면	2
컴퓨터와 연결	5
모니터 드라이버 설치	6
모니터 앞면 소개	10

## 화면조정면

화면 간단조정	11
☀ ●화면의 밝기를 조정 하려면	11
🗨 ●화면색상을 선명 하게 조정 하려면	11
📄 ●화면위치를 움직이려면	12
⊕ ●화면크기를 바꾸려면	12
🖼 ●좌우 오목(볼록)/사다리꼴 모양을 조정하려면	12
🔄 ●평행시변형/기울어진 모양을 조정 하려면	12
🕒 ●메뉴화면이 사라지는 시간을 조정하려면	14
📏 ●왼쪽(오른쪽)으로 볼록한 모양을 조정 하려면	15
📏 ●오래(짧게)를 눌러서	15
📏 ●모아레올굴무늬를 풀이려면	15
🔍 ●화면비탕 색상을 선택 하려면	13
🔄 ●메뉴화면을 다른 외국어로 보려면	15
🗨 ●화면색상을 직접 조정 하려면	13
Hz ●주파수/해상도를 확인하려면	15
📏 ●화면 알록을 없애려면	13
📏 ●비디오카드의 입력 신호 레벨을 맞추려면	16
📏 ●구입시 화면조정 상태로 돌아가려면	14
📏 ●입력 신호를 선택하려면	16
📏 ●메뉴화면의 위치를 움직이려면	14
📏 ●메뉴화면을 사라지게 하려면	16

## 기타면

안전을 위한 주의사항	17
이런 점이 궁금해요	18
문제 발생시 해결	19
용어설명	22
제품규격	23
표준 신호 모드표	24
수평주파수별 최대 수직주파수	25
올바른 작업자세에 대하여	26
제품보증서	

기본설치면

화면조정면

기타면

1.

- [ 14 , 15 = 800 × 600
- 17 = 1024 × 768
- 19 = 1280 × 1024

2.

( “ ” “ ” )

75Hz

[

]75Hz  
가

60Hz

!

75Hz

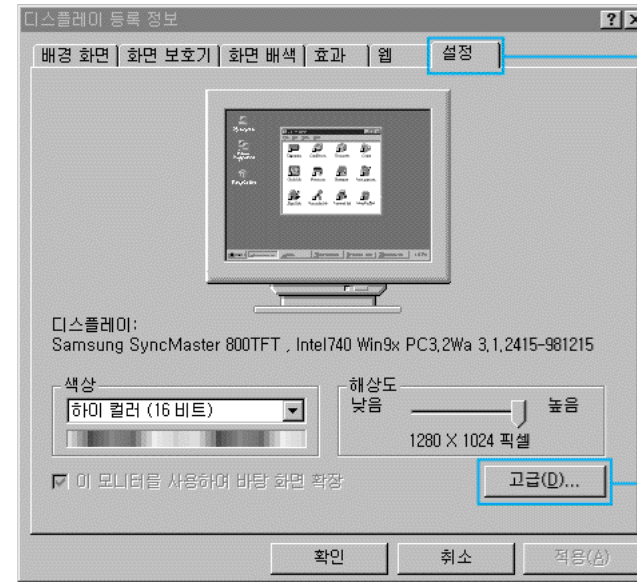
85Hz

“ ” “ ”

“ ” “ ”



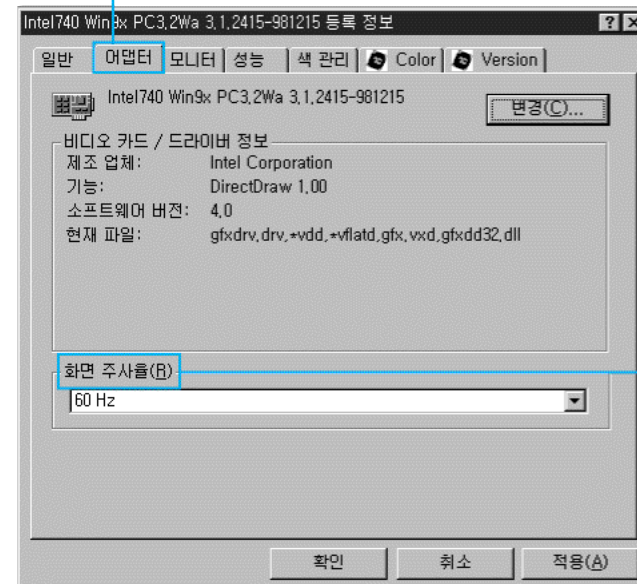
2



2. “ ”

3. “ ”

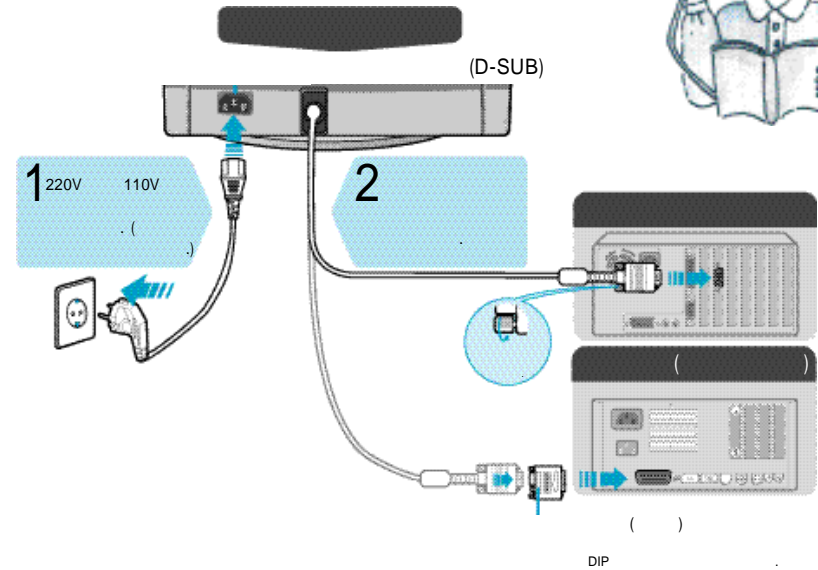
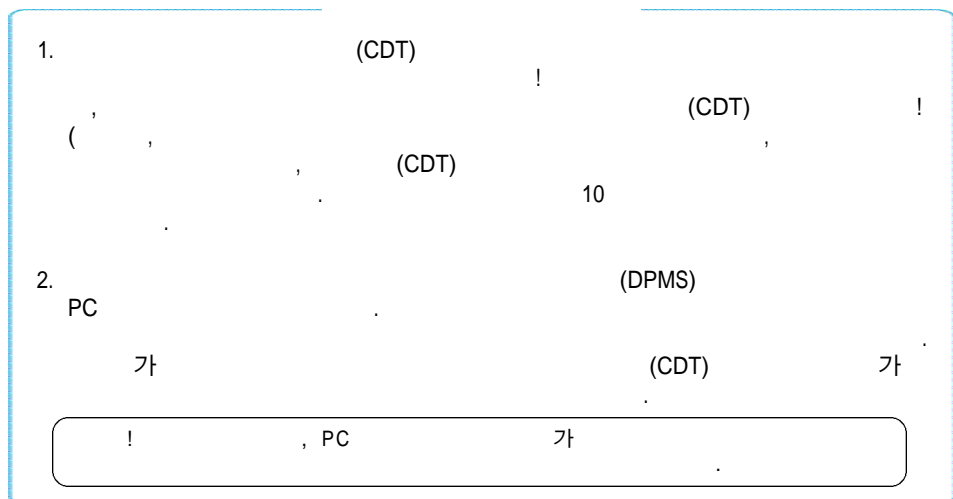
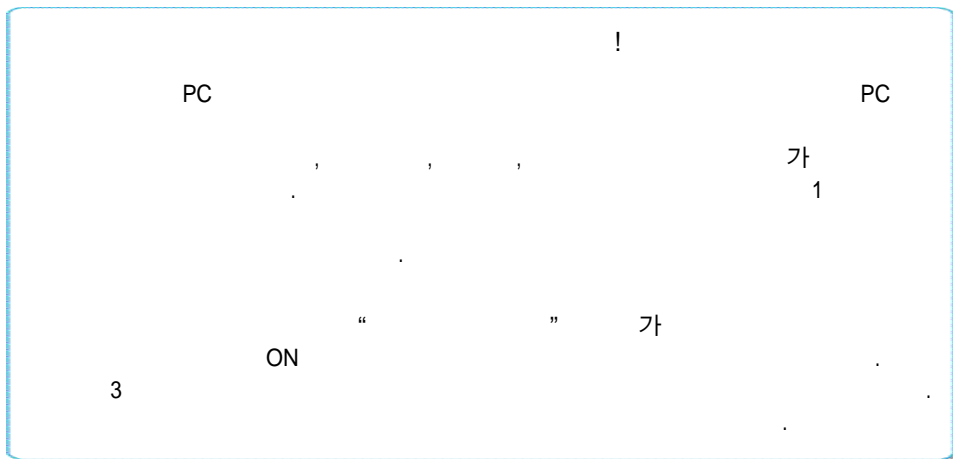
4. “ ”



5. “ ”

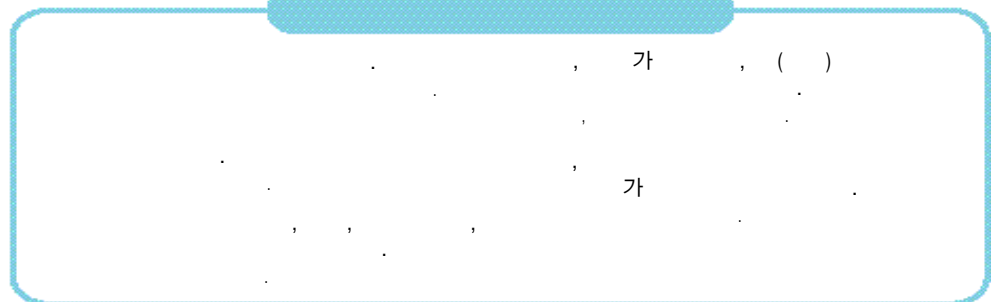
3

1. 가
2. 3
3. ( " 가 3 PC ( ) )
4. 75Hz 85Hz 60Hz ( , )
5. " ( )



가

	1	2	3
		/ (0.5 )	(1 )
110W ( ) 130W ( )	60W ( )	15W	3W



가

: http://samsungelectronics.com/kr/monitor/support/downloads/index.html  
PC ( : go sec

Install.exe

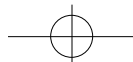
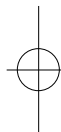
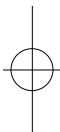
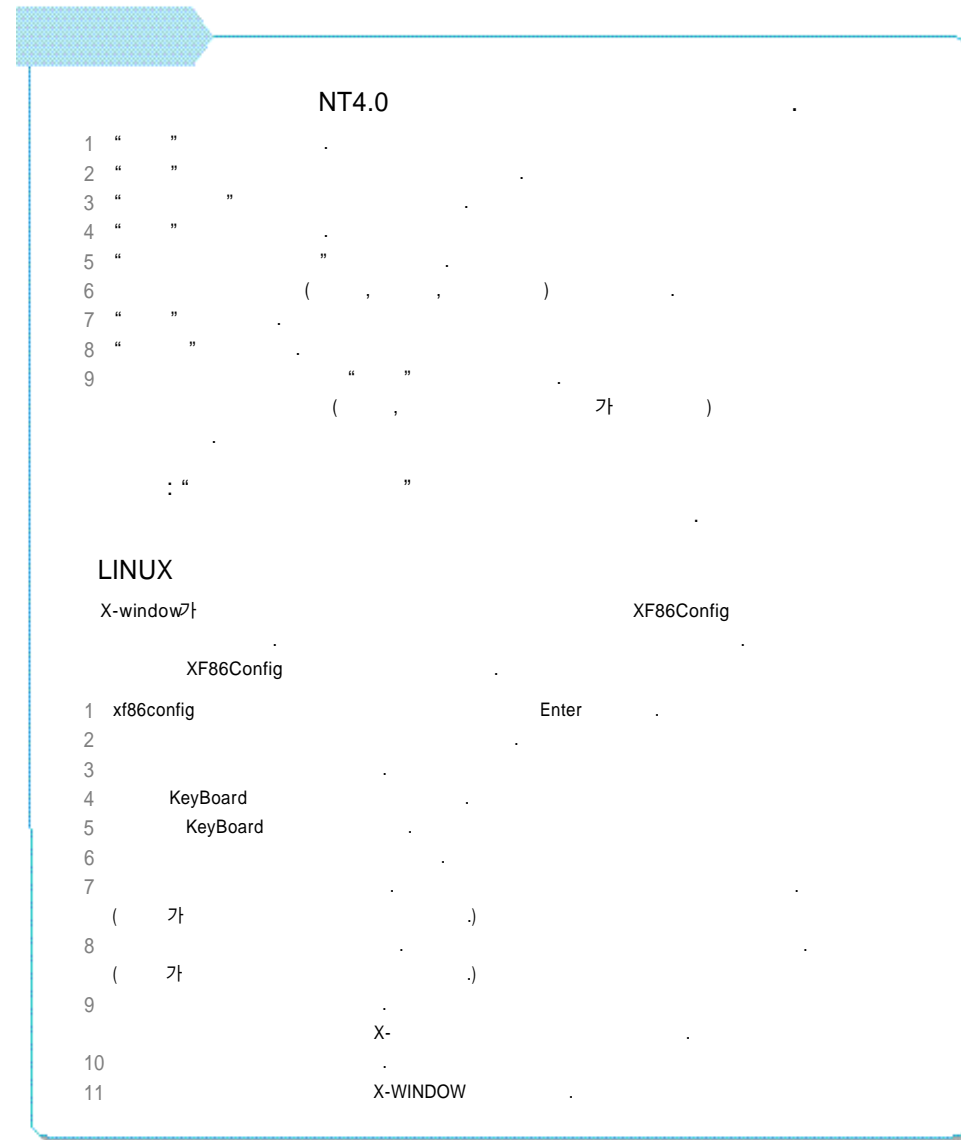
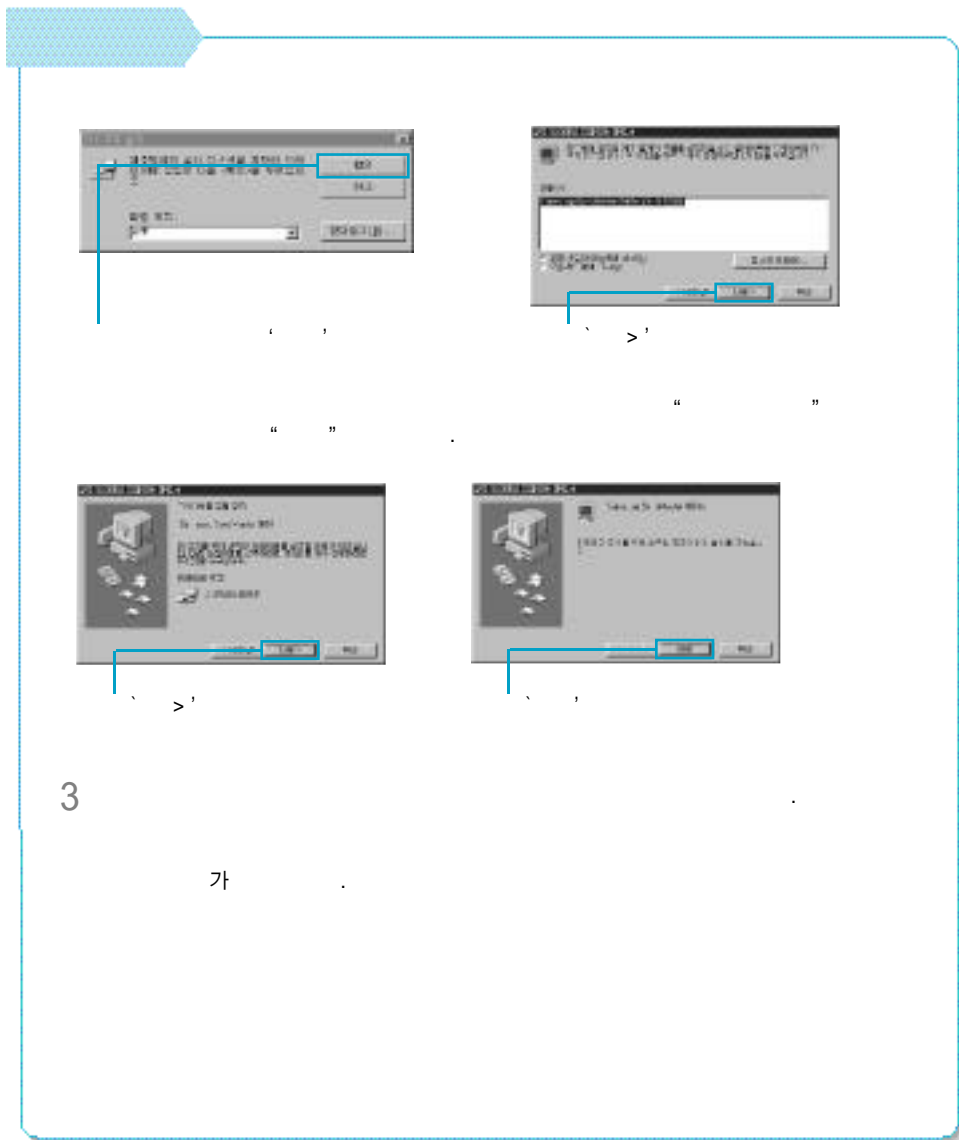
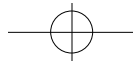
CD ROM

- 1 CD ROM
- 2 Windows driver CD ROM Drive Driver ( Monsetup )
- 3 " OK "
- 4 " Install "
- 5 " icm 가 " 가
- 6 CD-ROM Drive Driver ( :E:#Driver)
- 7 " "

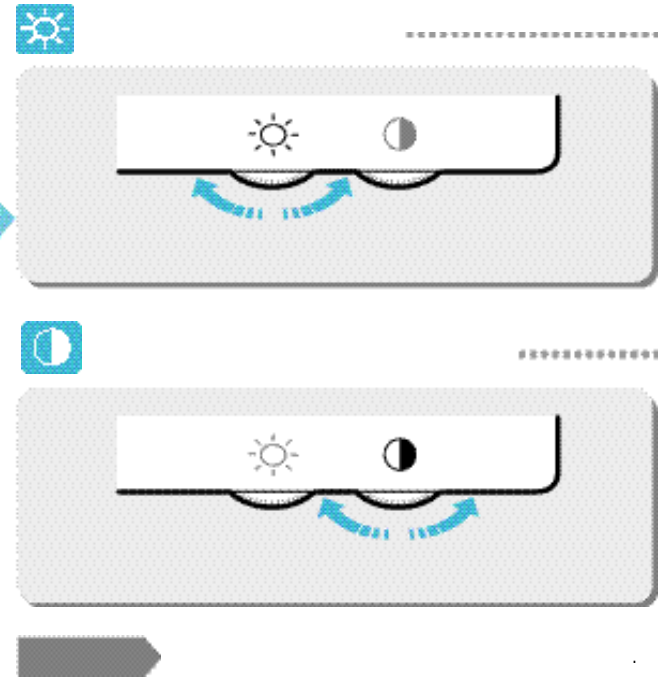
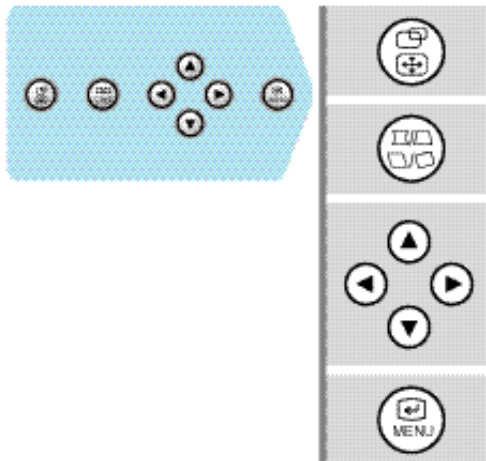
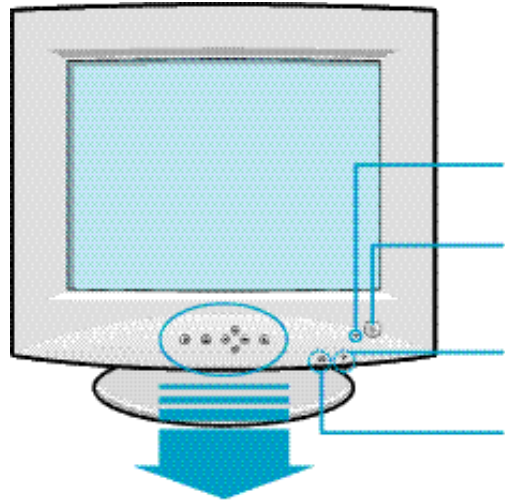
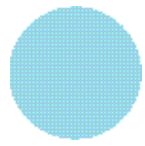
- 1 A:
  - 2 A: Install.exe
  - 3 " OK "
  - 4 " Install "
  - 5 " "
  - 6 " icm 가 " 가
  - 7 A:
  - 8 " "
- : 가

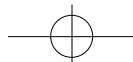
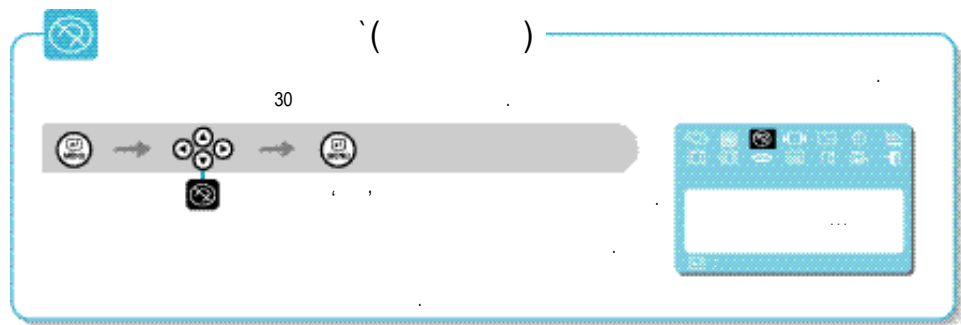
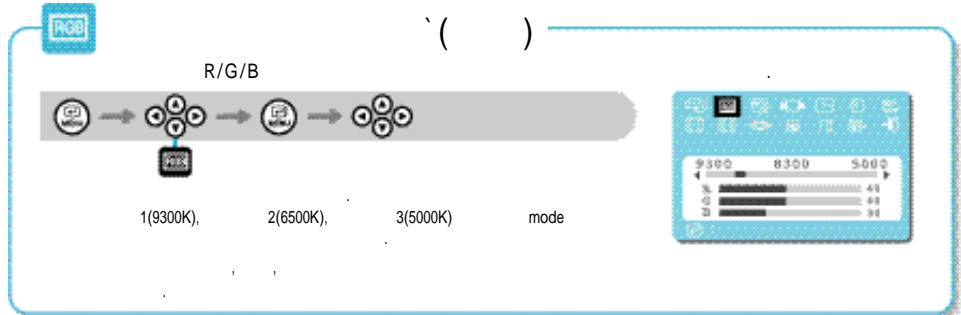
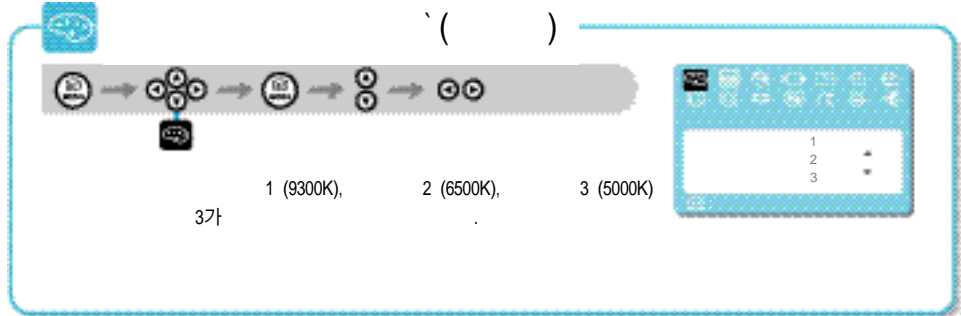
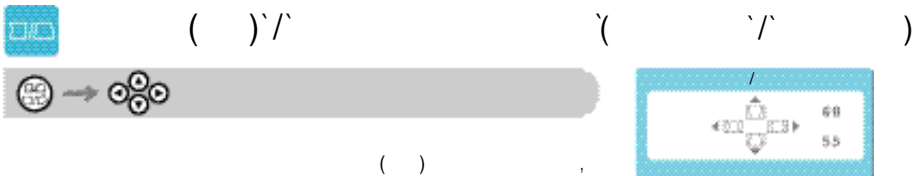
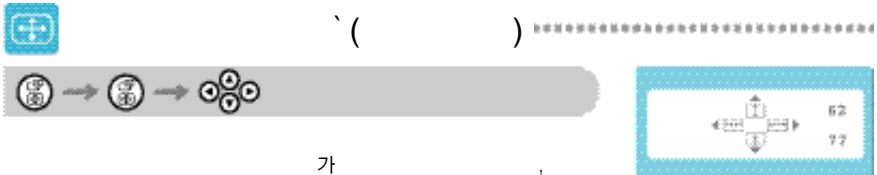
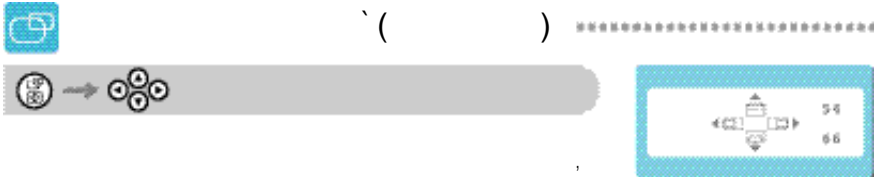
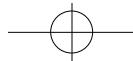
- 1 CD
- 2













가 ( )

가

MENU

가

Navigation diagram showing a sequence of icons: a camera icon, a menu icon, a directional pad icon, a menu icon, and a directional pad icon. A blue box highlights the menu icon. To the right is a screenshot of a camera menu with a directional pad and a 'MENU' button.

( )

Navigation diagram showing a sequence of icons: a camera icon, a directional pad icon, a menu icon, a directional pad icon, and a directional pad icon. A blue box highlights the directional pad icon. To the right is a screenshot of a camera menu with a directional pad and a 'MENU' button.

( )

3, 7, 10, 20, 50

Navigation diagram showing a sequence of icons: a camera icon, a directional pad icon, a menu icon, a directional pad icon, and a directional pad icon. A blue box highlights the directional pad icon. To the right is a screenshot of a camera menu showing zoom values: 3, 7, 10, 20, 50.

( ) ( )

Navigation diagram showing a sequence of icons: a camera icon, a directional pad icon, a directional pad icon, a menu icon, and a directional pad icon. A blue box highlights the directional pad icon. To the right is a screenshot of a camera menu with a directional pad and a 'MENU' button.

( ) 가 ( )

가

가

Navigation diagram showing a sequence of icons: a camera icon, a directional pad icon, a directional pad icon, a menu icon, and a directional pad icon. A blue box highlights the directional pad icon. To the right is a screenshot of a camera menu with a directional pad and a 'MENU' button.

( )

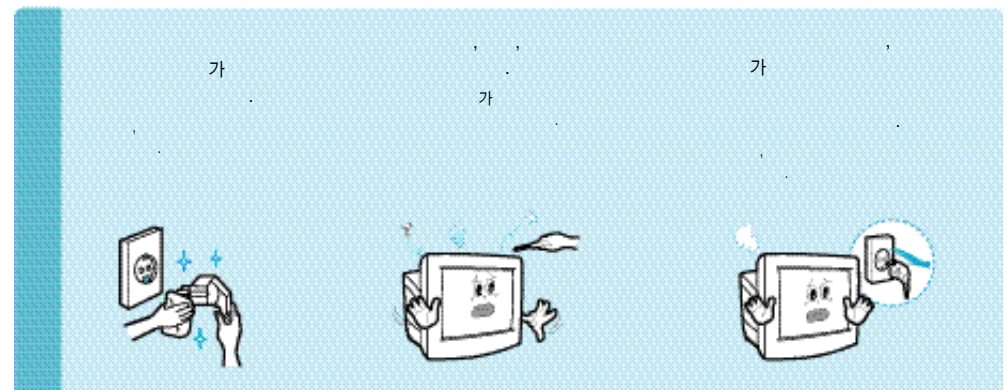
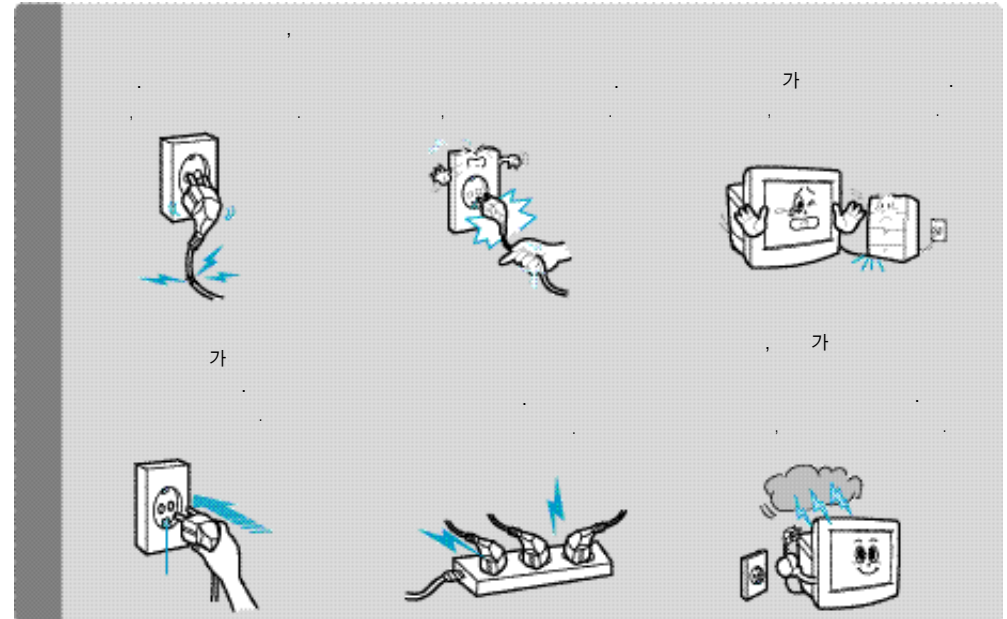
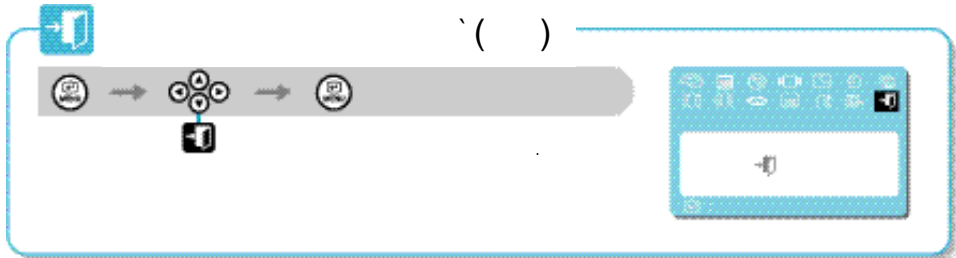
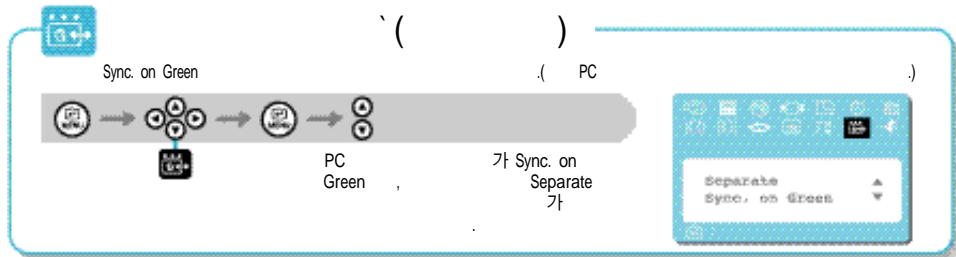
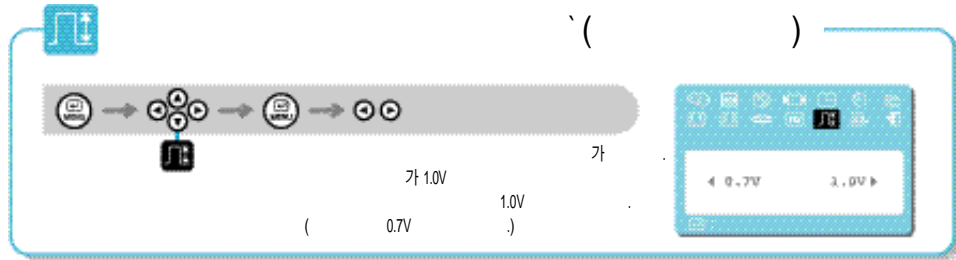
9

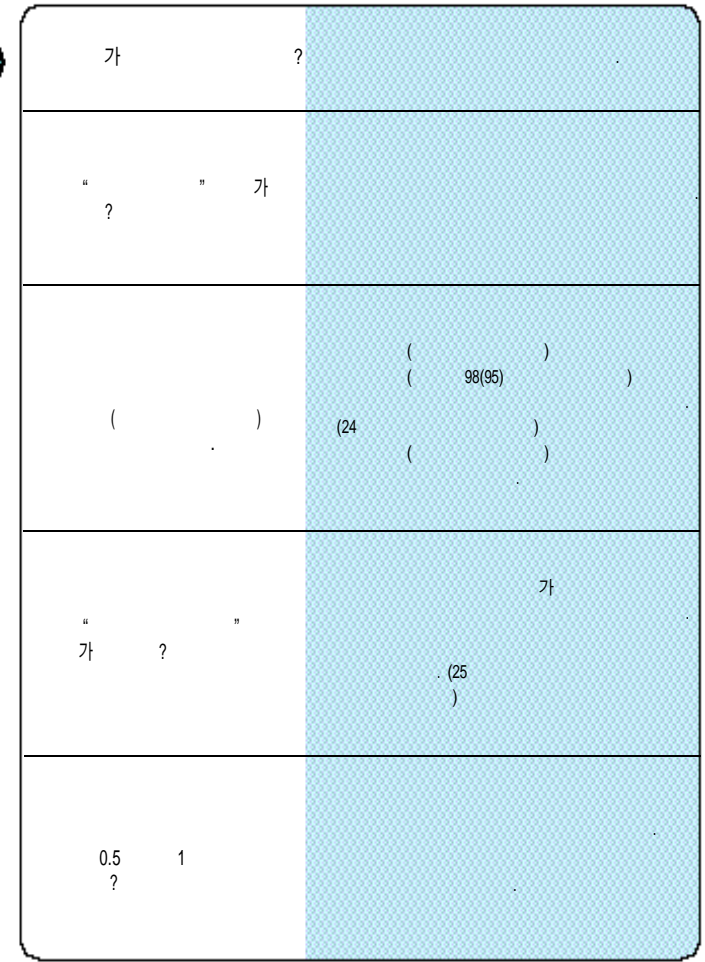
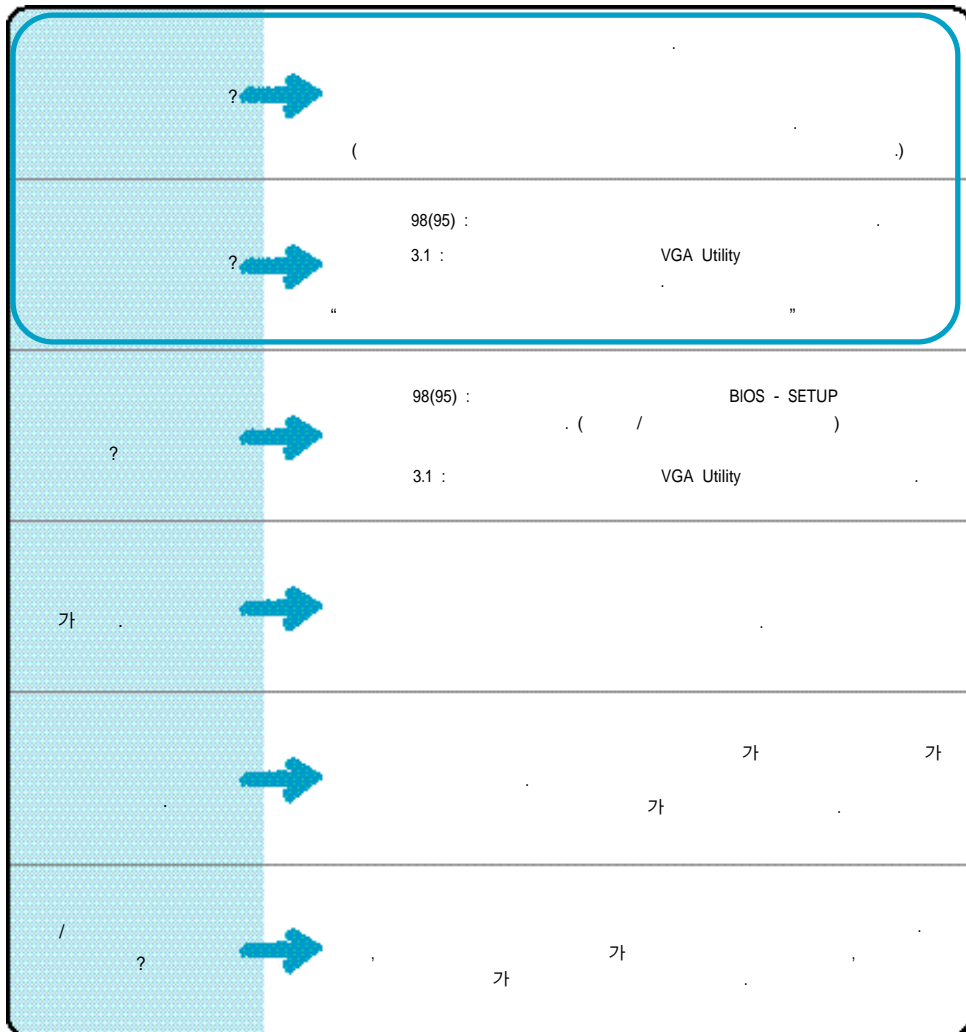
Navigation diagram showing a sequence of icons: a camera icon, a directional pad icon, a directional pad icon, a menu icon, and a directional pad icon. A blue box highlights the directional pad icon. To the right is a screenshot of a camera menu with a directional pad and a 'MENU' button.

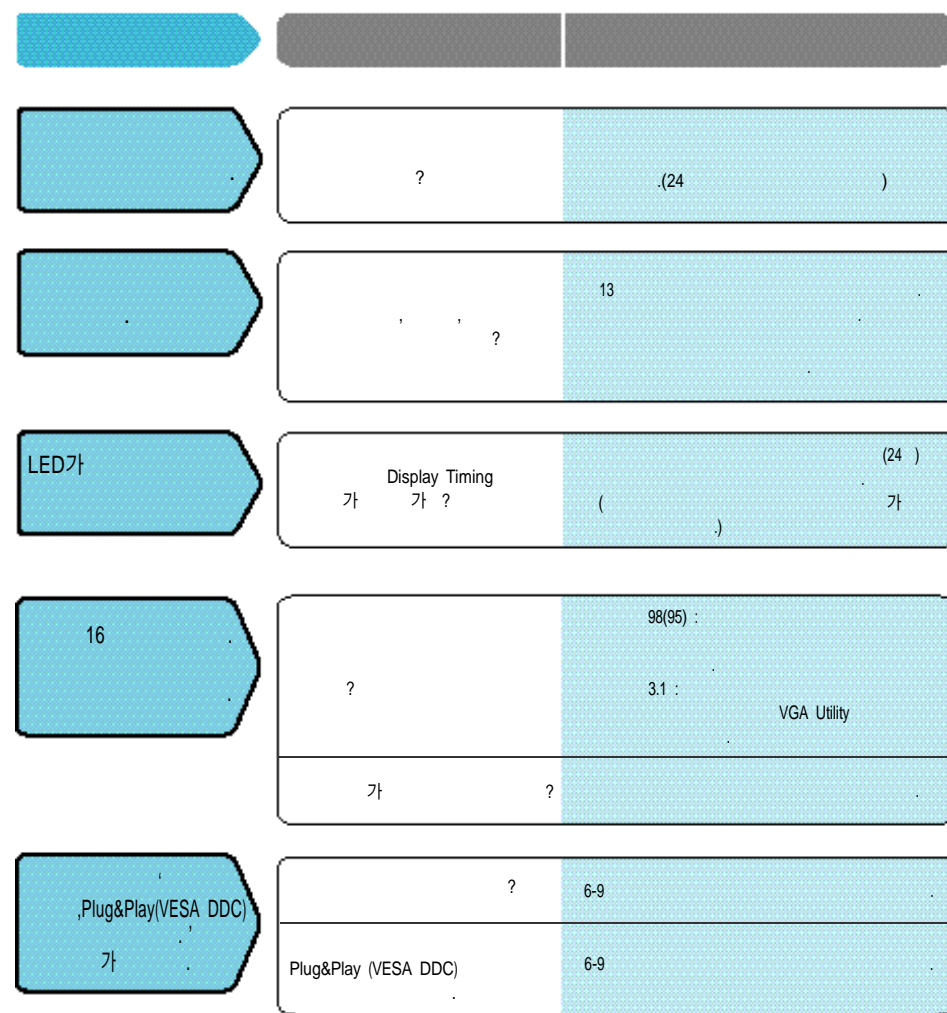
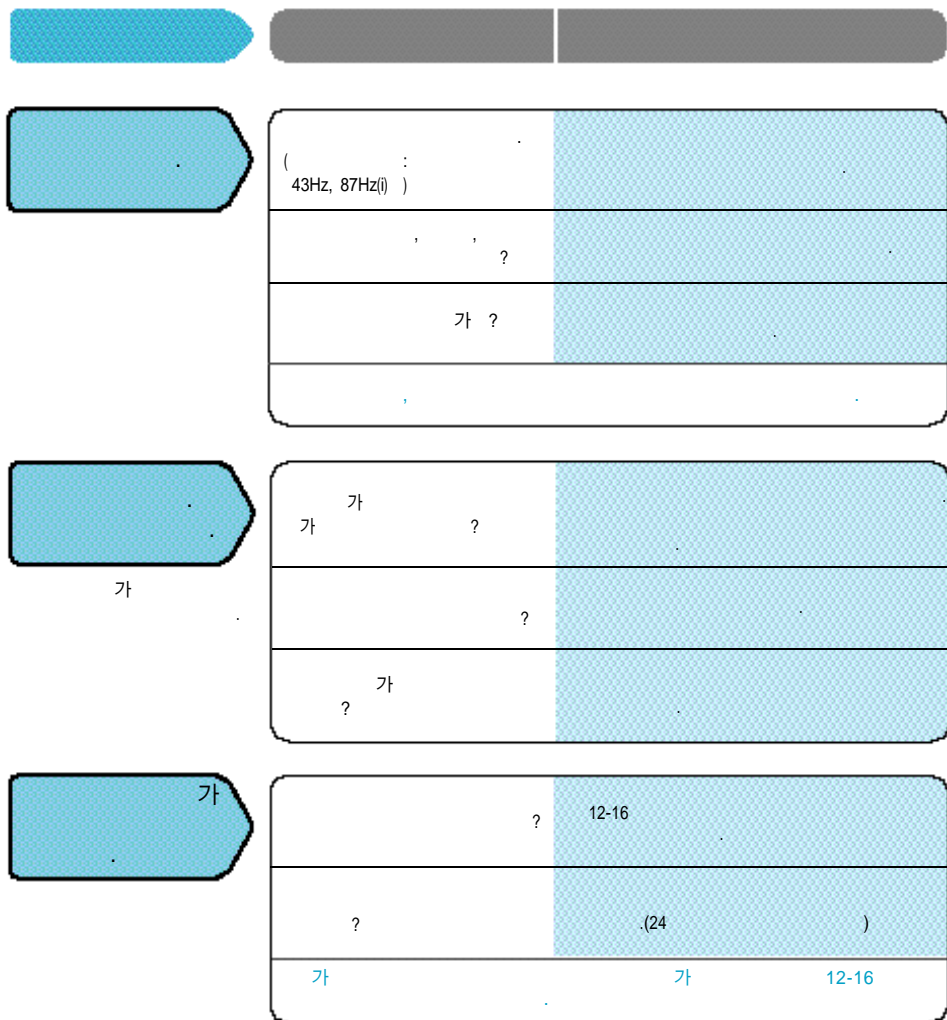
가 ( )

가

Navigation diagram showing a sequence of icons: a camera icon, a directional pad icon, a directional pad icon, a menu icon, and a directional pad icon. A blue box highlights the directional pad icon. To the right is a screenshot of a camera menu with a directional pad and a 'MENU' button.









(Dot Pitch)

가 가 가 가



가 1

1 ) 1 60 70Hz 60Hz

(Flickering)  
(Flicker-Free Mode)



가 1  
가

1 kHz 1



(Non-Interlace)

가

TV



(Plug & Play)

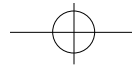
가

가  
VESA DDC

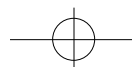
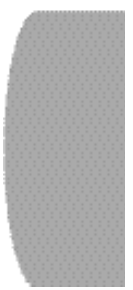


가

) 가 1024 x 768 가 1,024 ( ) 768 ( )



MODEL		SAMTRON 95in(T)
CRT		19 CRT, 가 : 45.8cm ( )
		90,
		: 0.22mm, : 0.14mm
		1600
		1200
		352 ± 3 mm
		264 ± 3 mm
		30 ~ 96 kHz ( )
		50 ~ 160 Hz ( )
		TTL
		TTL
	+	:0.3Vp-p, ( 0.7Vp-p )
		0.7Vp-p, (75 )
		205 MHz
		AC 110 ~ 220V ( ), 60Hz ± 3Hz
		130W ( )
		469 x 493.5 x 471mm
		21.7 kg







가  
가

	(kHz)	(Hz)	(MHz)	(H/V)
IBM, VGA2 (720 X 400)	31.469	70.087	28.322	(- / +)
IBM, VGA3 (640 X 480)	31.469	59.940	25.175	(- / -)
VESA (800 X 600)	53.674	85.061	56.250	(+ / +)
VESA (1024 X 768)	68.677	84.997	94.500	(+ / +)
VESA (1280 X 1024)	79.976	75.025	135.000	(+ / +)
VESA (1280 X 1024)	91.146	85.024	157.500	(+ / +)
VESA (1600 X 1200)	93.750	75.000	202.500	(+ / +)
MAC (1152 X 870)	68.681	75.062	100.000	(- / -)

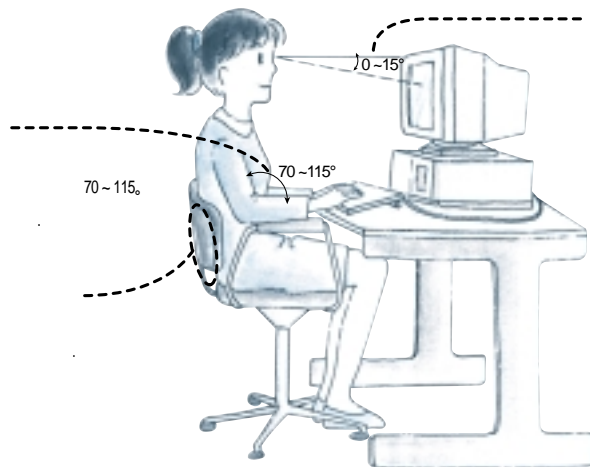
B  
가  
( : A , B A .)

		(Hz)	(Hz)
55 kHz	640 480	60/75/85/100	100
	800 600	60/75/85	85
	1024 768	60	60
61 kHz	640 480	60/75/85/100/120	120
	800 600	60/75/85/90	90
	1024 768	75	75
70 kHz	640 480	60/75/85/100/120	120
	800 600	60/75/85/100	100
	1024 768	60/75/85	85
	1280 1024	60	60
85 kHz	640 480	60/75/85/100/120/150	150
	800 600	60/75/85/120	120
	1024 768	60/75/85/100	100
	1280 1024	60/75	75
	1600 1200	60/66	66
96 kHz	640 480	60/75/85/100/120/150	150
	800 600	60/75/85/120/150	150
	1024 768	60/75/85/120	120
	1280 1024	60/75/85/90	90
	1600 1200	60/75	75
107 kHz	640 480	60/75/85/100/120/150	150
	800 600	60/75/85/120/150	150
	1024 768	60/75/85/120	120
	1280 1024	60/75/85/100	100
	1600 1200	60/75/85	85





가



0-15°

70-115°

70-115°

L

( )

14 7

1  
QRT  
4

			SAMTRON 95in(T)
		SERIAL NO.	

1 ( )

5

10		
1		
3		
4		
가	가	가
가	가	가 10% 가

( 가 가 )

가	2	
( )	1	
	1	

가

110V 220V

( )

( )

삼성전자

# 삼성전자주식회사

3 416

TEL: (0331)200-1114

# 1588-3366



Help Desk

# 080-200-8001 ( )

08:00 ~ 17:00 ( )

가

- 02-3451-3366
- 0391-652-3366
- 053-430-3366
- 042-480-3366
- 051-550-3366
- 0652-240-3366
- 062-250-3366
- 064-742-3366



02-541-3000 080-022-3000  
051-861-3000 080-051-3000



PC  
PC ( 가 )  
GO SEC ( , , , , )



<http://www.sec.co.kr/monitor>  
<http://www.samsungelectronics.com>



<http://www.gosamsung.co.kr>



AS ? 가 가

P/N : BH68-00215A-02

