

SyncMaster LD190N

# LCD Monitor



가  
가



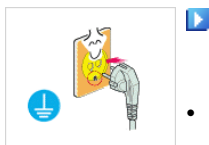
PC

(DPM)

가



가



가

( )

. ( 1

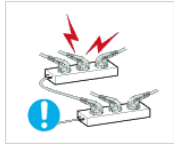


가



•

가



•



•



•

가



•



•

가



가

†

†

가

,

가

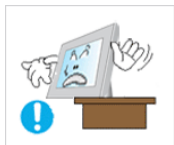
,

가

,



•



•

•

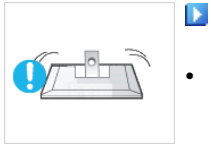
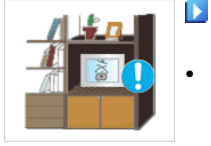


•

가



가



가

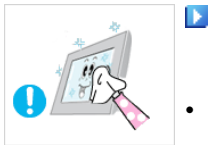


(10 cm )



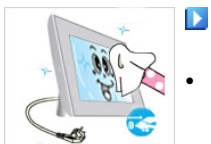
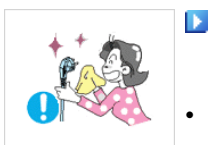
가

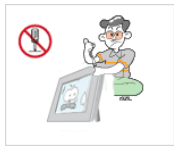
가



" "

1:10





가

가

가

가

( )

가

( )

가

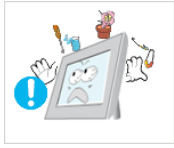
가

가

가



가



가



가

가



( , ) 가 , ,



가



1 5 가



가



가

가

가



가

, ,



가

가



가

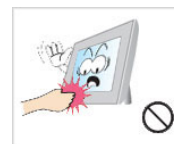


가

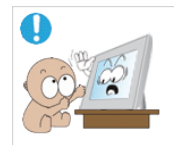


가 가

가

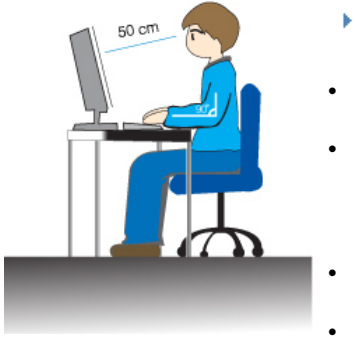


가



가 가





45~50 cm,

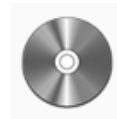
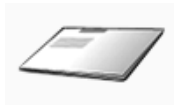


• 90

• 90

가





D-Sub





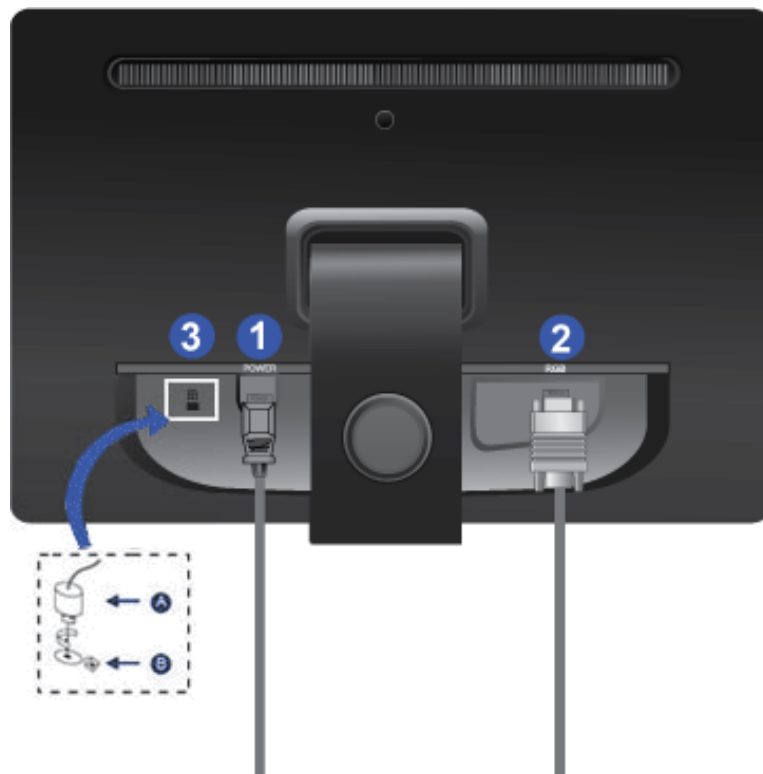
1 MENU [MENU]  
OSD OSD , OSD

2 [⚙️]  
OSD 가 가

3 AUTO  
OSD 가 가

2,3 [⏮/⏭]  
OSD

4 [🔌]  
OSD



---

1

(POWER)

2

D-Sub

(RGB IN)

D-Sub

RGB IN

PC

RGB IN

3

(

.)



1.

A

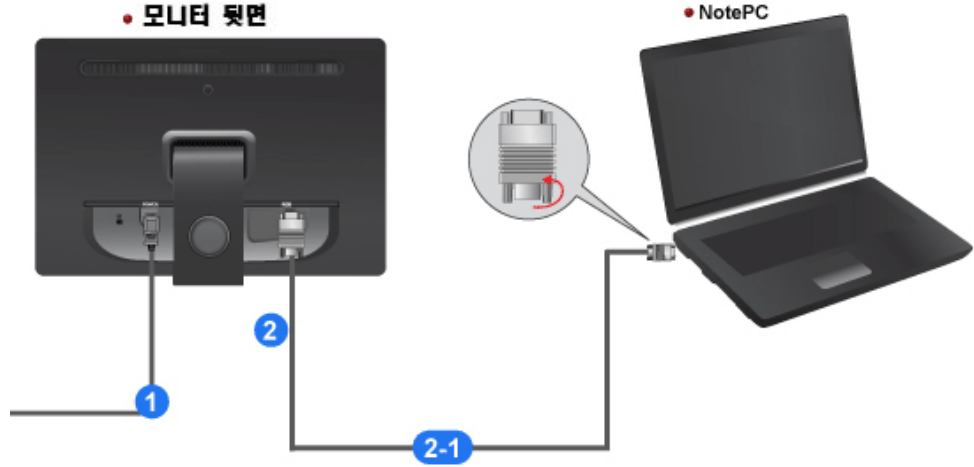
B

2.

3.



(NotePC)



1

220V 110V

( )

2

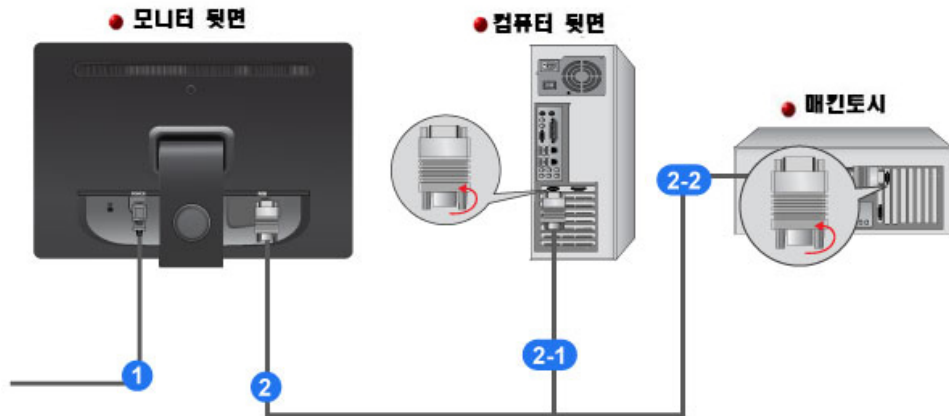
2-1

D-Sub( )

- D-Sub RGB IN D-Sub



(PC)



1

220V 110V

( .)

2

2-1

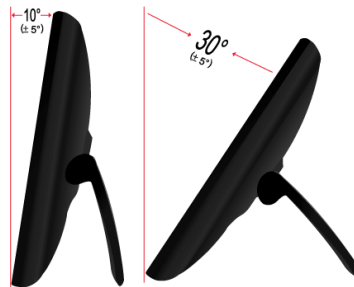
D-Sub( )

- D-Sub RGB IN D-Sub

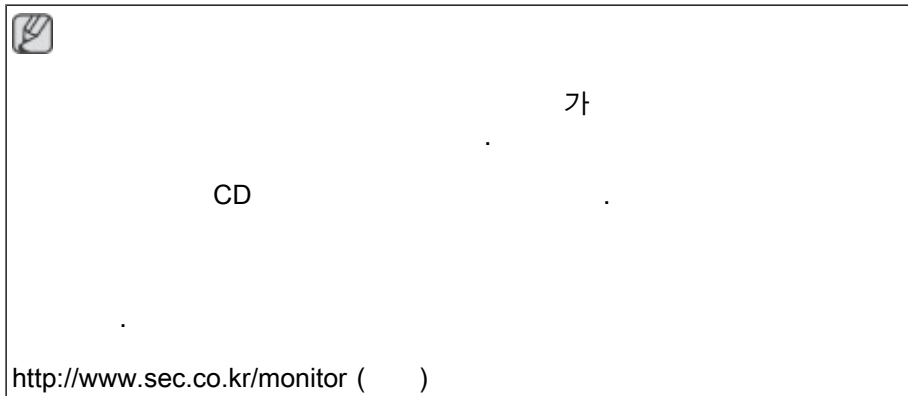


2-2

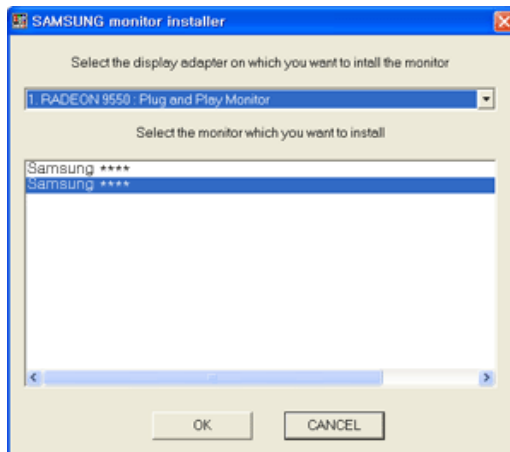
- D-Sub RGB IN D-Sub



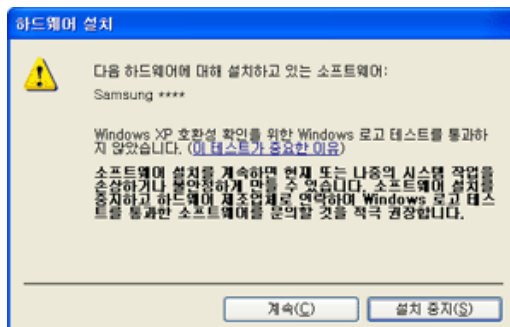
10 °~ 30 °( ± 5 °)



1. CD CD-ROM
2. "Windows"
- 3.



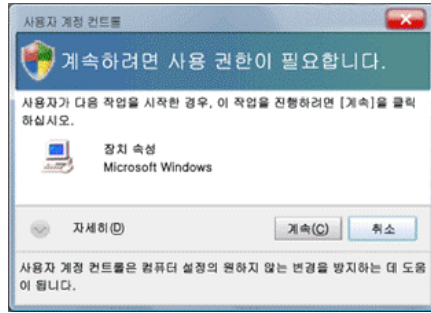
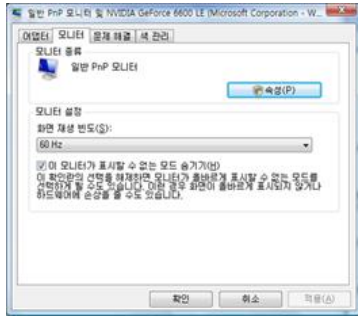
4. dows® XP/2000 ). (Microsoft® Win-



MS



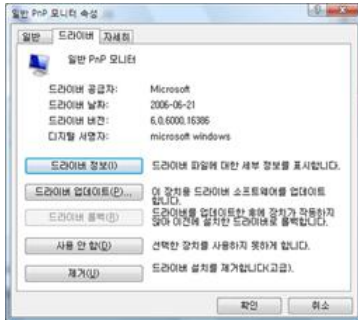
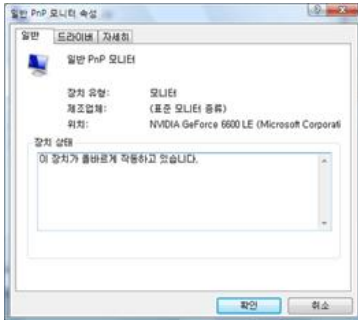




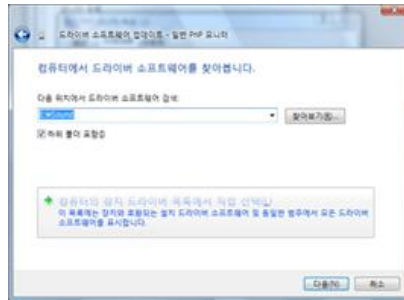
MS

<http://www.sec.co.kr/monitor>

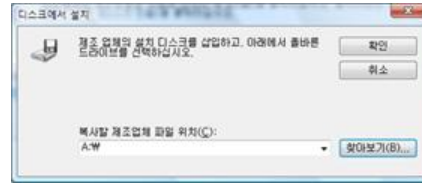
6. " " " "



7. " " "



8. " " ( :D:\Drive)



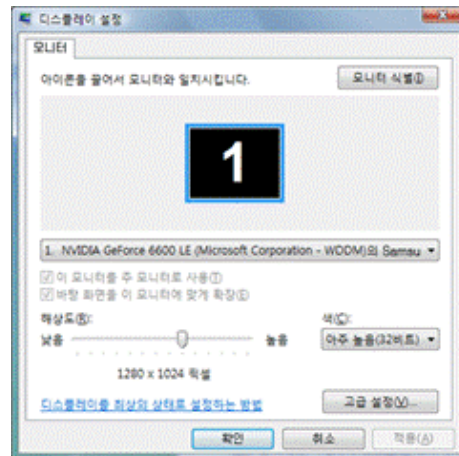
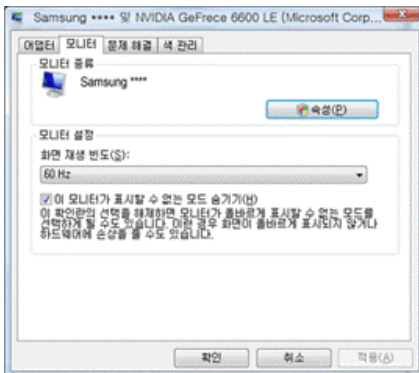
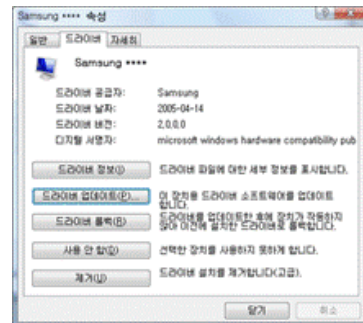
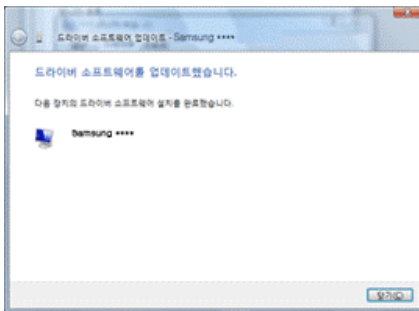
9.

“ ”



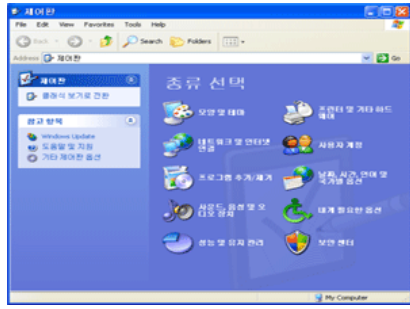
10.

“ ” “ ” “ ” “ ”

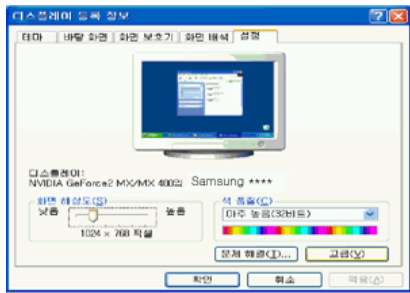
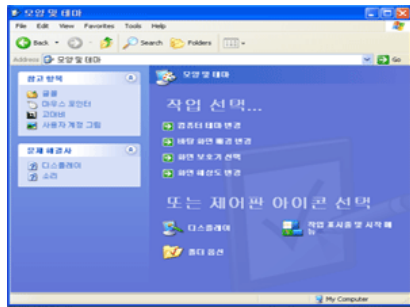


Microsoft® Windows® XP

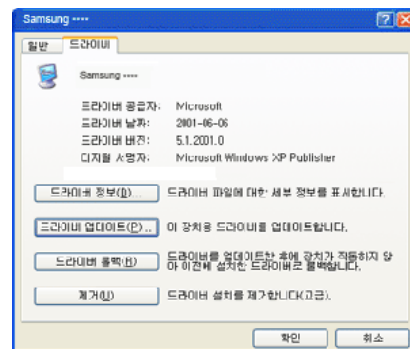
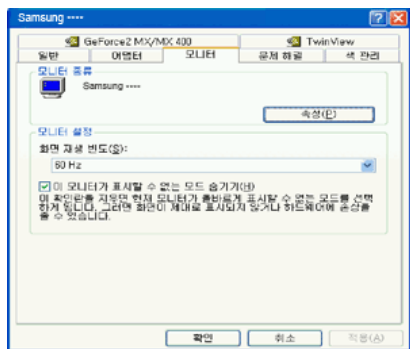
1. CD CD-ROM
2. " " " " " "



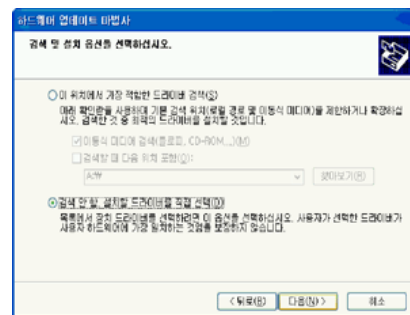
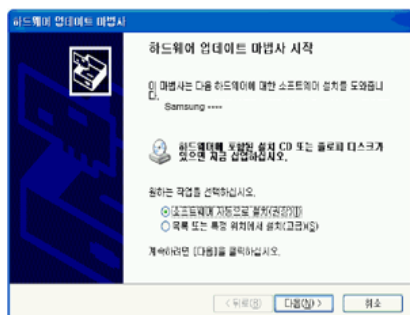
3. " " " " " " " "



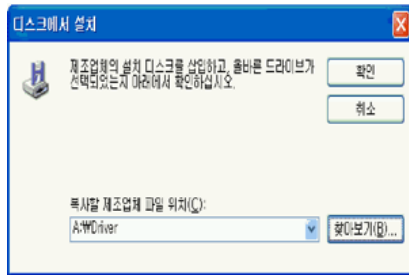
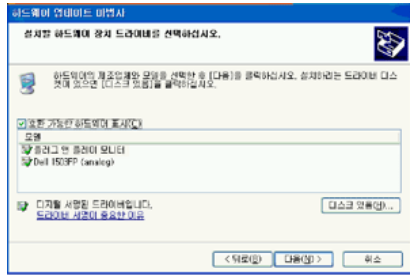
4. " " " " " " " "



5. " " " " " " " "

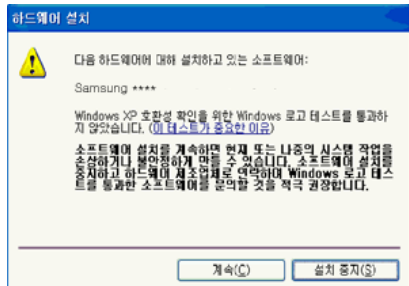
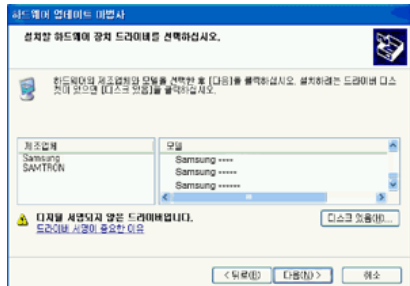


6. " " " " " " " " A:( , D:\Driver) " "



7.

" " " " " " " "

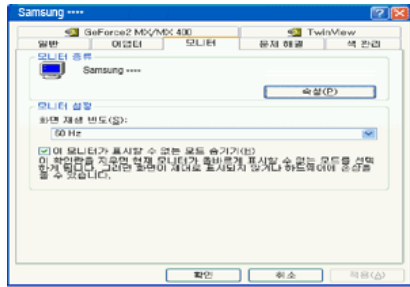
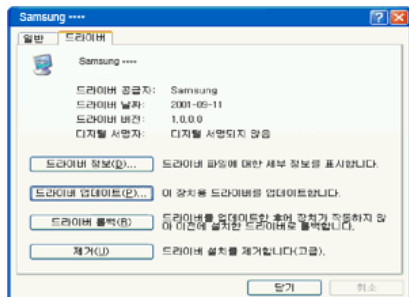
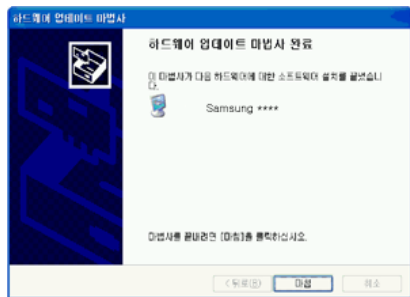


MS

<http://www.sec.co.kr/monitor>

8.

" " " " " " " "



Microsoft® Windows® 2000

" " " " " " " "

- 
1. " " " " .
  2. " " " " .
  3. A:\( ,D:\Driver) " " .

1. " " " " " " .
2. " " .
3. " " " " " " .
4. " " " .
5. " " " " " " .
6. " " " " .
7. " " " " " .
8. A:\( ,D:\Driver) " " " " .
9. " " " " .

10. " " " " " " .

Microsoft® Windows® Me (Millennium)

1. " " " " " " .
2. " " .
3. " " .
4. " " .
5. " " " " .
6. " " " " .
7. " " " " " .
8. A:\( ,D:\Driver) " " " " .
9. " " " " .

10. " " " " " " .

Microsoft® Windows® NT

1. " " " " " " " " .
-

---

2. " " " " " "

3. ( , , ) " "



Linux

X-Window 가

X86Config

X86Config

1. X86Config

"Enter"

2.

3.

4.

5. " .." " "

6. . ( 가 .)

7. . ( 가 .)

8. X-Window

9. X-Window

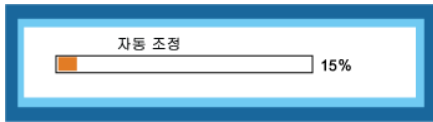
---



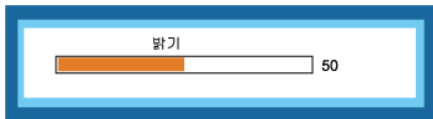
- LED 가 10 .
- MENU( ) OSD .

## AUTO

OSD 가 "▼" AUTO  
( ), ( )



OSD 가 "▲" Brightness( )



## OSD



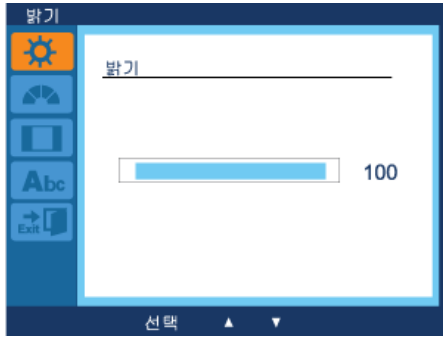
MagicBright



English



(MagicBright .)



MENU MENU ▲, ▼  
MENU

 **MagicBright**

MagicBright , , ,

가  
5가

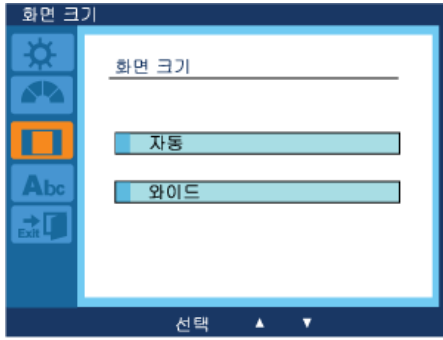


MENU ▲, ▼ MENU ▲,  
▼ MENU

- ,
- ,
- ,
- ( + ) 가
- ( , DVD, Video CD ) 가
- 







•

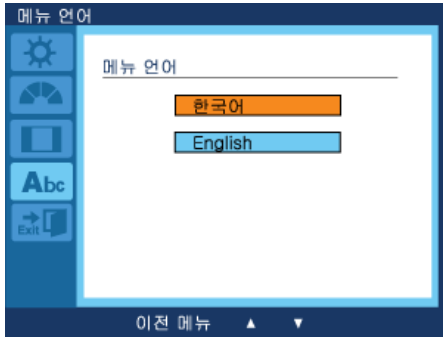
•

wide PC

MENU ▲, ▼ MENU ▲,  
▼ MENU

•

•



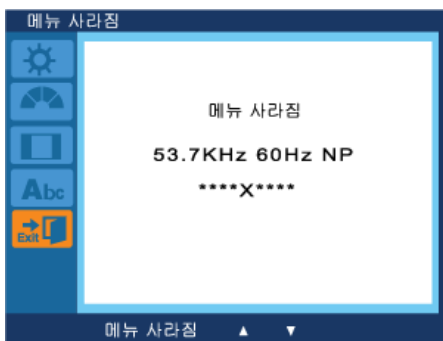
MENU ▲, ▼ MENU ▲,  
▼ MENU

•

• English



OSD



MENU ▲, ▼ MENU



가 , 가  
가 ,

- 1.
- 2.
- 3.

가

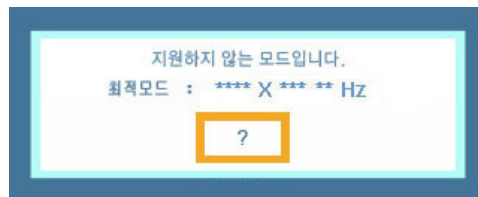


- 4.

가

가

가



가

1m

PC

PC

---

가  
1

" : 1360 x 768 60 Hz" 가

"3



Q: ?

A:

Q: " " 가 ?

A: (D-Sub )

Q: ( )

A:

( )

( )

Q: " : 1360 x 768 60 Hz" 가 ?

A: 가

A:

A: SXGA 75 Hz " : 1360 x 768  
60 Hz"가 85 Hz " : 1360 x 768  
60 Hz"가 1

1

( .)

Q: 1 ?

A:

A:

---

---

Q: 가 가 ?

A:

Q: ?

A:

Q: 가 ?

A:

가

Q: ?

A:

( )

Q: 가 ?

A:

Q: ?

A:

( )

## LED 가

Q: Display Mode 가 가 ?

A:

( 가 .)

## 16

Q: ?

A: Windows ME/XP/2000 : "

Q: 가 ?

A:

가 , Plug&Play(VESA DDC)

Q: ?

A:

---

---

Q: Plug&Play(VESA DDC)

A:

3  
(" " 가 3 .)

PC

50 Hz ~ 75 Hz Hz

( , 75 Hz )

" "



가

Q: ?

A:

A:

( .)

Q: ?

A: Windows XP :

A: Windows ME/2000 :

Q: ?

A: Windows XP :  
BIOS SETUP

A: Windows ME/2000 : BIOS  
SETUP

/

Q: /LCD ?

A:

, LCD 가 ,  
가

---

---

---

SyncMaster LD190N

TBD

**LCD**

---

18.5 (47 cm)

---

409.8 mm (H) x 230.4 mm (V)

---

0.3 mm (H) x 0.3 mm (V)

---

30 ~ 81 kHz

---

50 ~ 75 Hz

---

16.7M

---

1360 x 768@60 Hz

---

1360 x 768@60 Hz

---

RGB

0.7 Vp-p ± 5 %

H/V sync, , SOG

TTL (V high 2.0 V, V low 0.8 V)

---

89 MHz ( )

---

AC 100 - 240 V~ (+/- 10 %), 50/60 Hz ± 3 Hz

---

15 D-sub

( x x )/

---

450.2 x 295.8 x 72.0 mm ( ) / 4.7 kg

---

: 10°C ~ 40°C (50°F ~ 104°F)

---

: 10 % ~ 80 %

---

---

: -20°C ~ 45°C (-4°F ~ 113°F)

: 5 % ~ 95 %,

---

가

---

LCD Panel

1ppm( 1)

LCD Sub Pixel : 18.5 (47 cm ) : 3,133,440

---



B (가 )

가 (B )

.)

.(B

A 가

가 ,

---

---

---

20 w

1 w

1 w



가

"0" Watt 가



ENERGY STAR

---

가

가

---

	(kHz)	(Hz)	(MHz)	( / ) (H/V)
IBM, 640 x 350	31.469	70.086	25.175	+/-
IBM, 640 x 480	31.469	59.940	25.175	-/-
IBM, 720 x 400	31.469	70.087	28.322	-/+
MAC, 640 x 480	35.000	66.667	30.240	-/-
MAC, 832 x 624	49.726	74.551	57.284	-/-
VESA, 640 x 480	37.861	72.809	31.500	-/-
VESA, 640 x 480	37.500	75.000	31.500	-/-
VESA, 800 x 600	35.156	56.250	36.000	+/+
VESA, 800 x 600	37.879	60.317	40.000	+/+
VESA, 800 x 600	48.077	72.188	50.000	+/+
VESA, 800 x 600	46.875	75.000	49.500	+/+
VESA, 1024 x 768	48.363	60.004	65.000	-/-
VESA, 1024 x 768	56.476	70.069	75.000	-/-
VESA, 1024 x 768	60.023	75.029	78.750	+/+
VESA, 1360 x 768	47.712	60.015	85.500	+/+



1

fresh Rate

가

가

kHz

Line

Hz

Re-



가 가



- 1588 - 3366
- 02-541-3000
- 080-022-3000
- <http://www.sec.co.kr/monitor>

가

- <http://www.samsungsvc.co.kr>

가 가



( ) . TFT-LCD 가

- : 1360 x 768
- ( ) : 60 Hz

---

+ LCD Panel 1ppm( 1)

- LCD Panel Sub Pixel : 18.5 (47 cm ): 3,133,440

+ 가  
가

+ " "

+ .

+ TFT-LCD CDT 가 가  
가

( )

LCD TV

LCD

+ .

+ 가?

LCD

2

가

.LCD

LCD

+ , ,

)

•

- 20 4

- 12 2

•

---

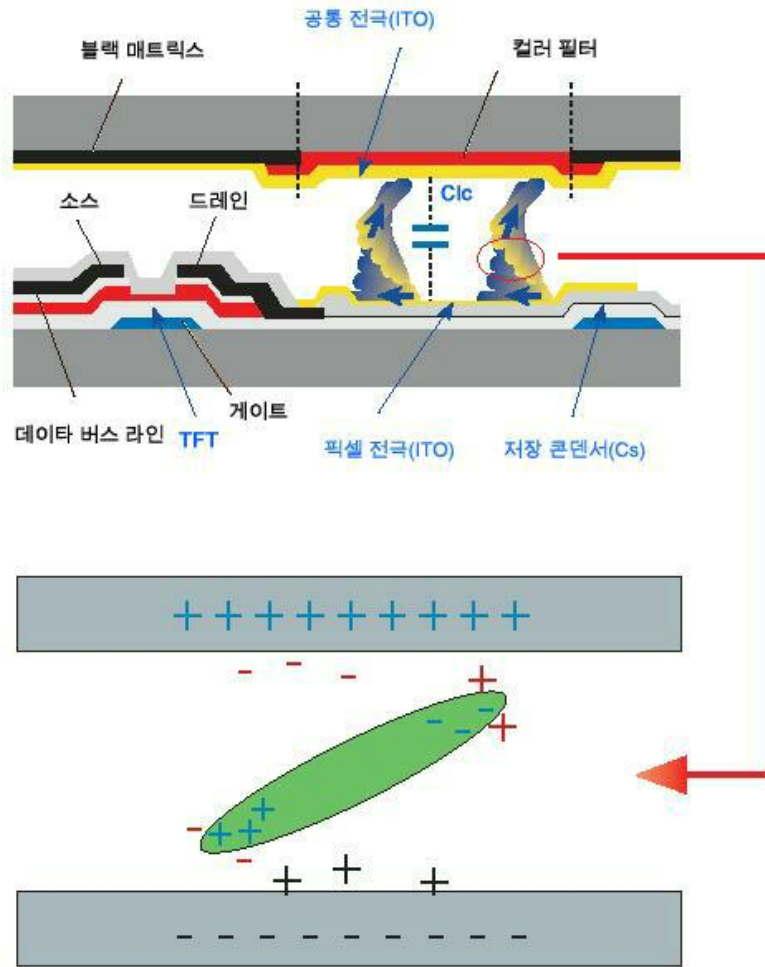




LCD 가 가

(12 ) LCD

(LC) 가



LCD

ISO13406-2 Pixel fault Class II

가

SyncMaster



Box

[www.sec.co.kr/monitor](http://www.sec.co.kr/monitor)

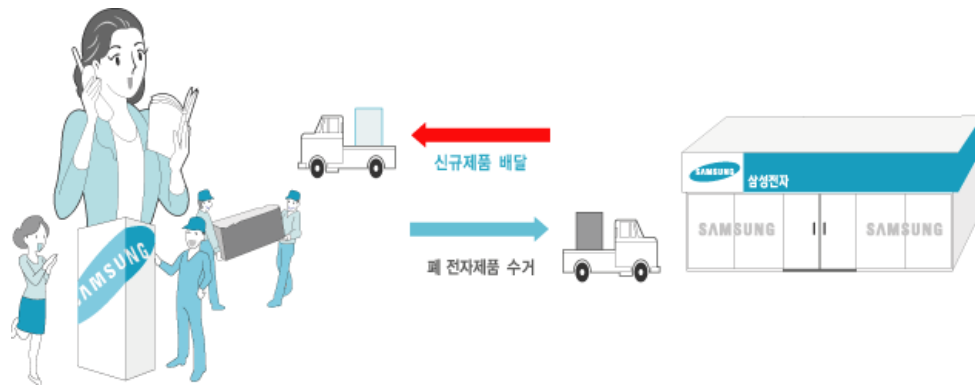
...

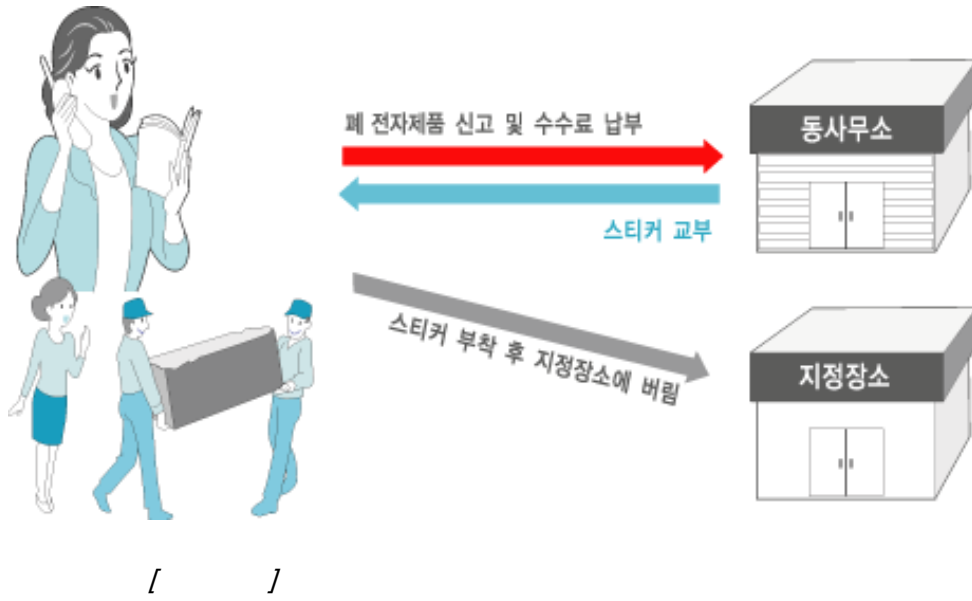
[www.sec.co.kr/monitor](http://www.sec.co.kr/monitor)

가

( , )

SyncMaster





1992 6

1996 5 [ ]

(Dot Pitch)

가 . 가 가 가 mm

가 1

Rate , Hz Refresh

: 1 60 60 Hz

가 Line

kHz

(Non-inter-  
lace)  
(In-  
terlace)

가  
( )

TV

가

Play) (Plug & 가 가 VESA  
 DDC 가 가  
 : 가 1360 x 768 가 1360 ( )  
 ) 768 ( )



UL 2601-1/IEC 60601-1

가 가 가 가  
 가 가 가  
 가

EMC

IEC 601-1-2:1994

가 , 가 가  
 가 가  
 가  
 ;  
 ;  
 •  
 •  
 • ( )  
 •

Video In / RS 232 / Video Out

IEC ( , IEC 950) IEC 601-1  
 IEC 601-1-1



IEC 601-1-1

: : -40°C +70°C

: 10 - 95 %,

2009

( )

( ) 가

SAMSUNG SyncMaster ( )

Microsoft, Windows Windows NT Microsoft( )

VESA, DPM DDC Video Electronics Standard Association

ENERGY STAR (名) (U.S. Environmental Protection Agency)

ENERGY STAR ( ) , ENERGY STAR

---