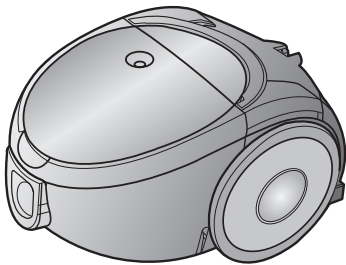


SAMSUNG

Operating Instructions

VACUUM CLEANER



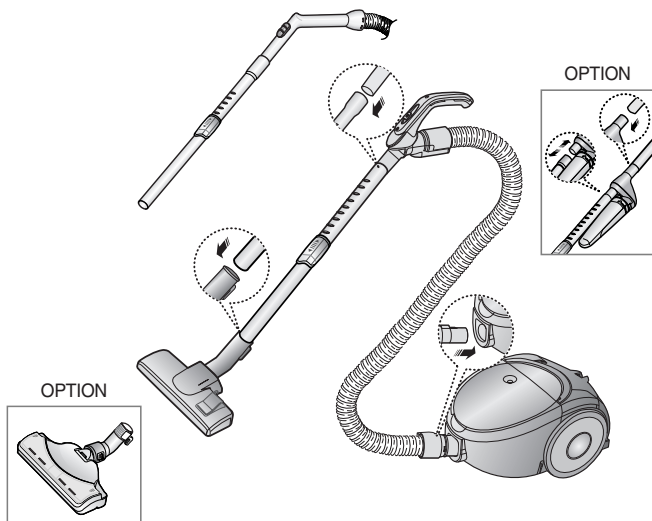
- ※ Before operating this unit, please read the instructions carefully.
- ※ For indoor use only.

Register your product at www.samsung.com/global/register

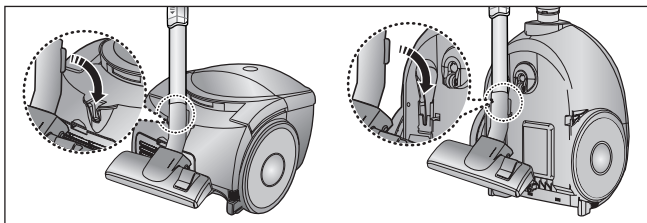
IMPORTANT SAFEGUARDS

1. Read all instructions carefully. Before switching on, make sure that the voltage of your electricity supply is the same as that indicated on the rating plate on the bottom of the cleaner.
2. **WARNING:** Do not use the vacuum cleaner when rug or floor is wet.
Do not use to suck up water.
3. This appliance is not intended for use by young children or infirm persons unless they have been adequately supervised by a responsible person to ensure that they can use the appliance safely. Young children should be supervised to ensure that they do not play with the appliance.
4. Do not use the vacuum cleaner without the dust bag. Empty the dust bag before it is full in order to maintain the best efficiency.
5. Slide to the Stop (or Min) position before inserting a plug into the electrical outlet.
6. Do not use the vacuum cleaner to pick up matches, live ashes or cigarette butts. Keep the vacuum cleaner away from stoves and other heat sources. Heat can deform and discolour the plastic parts of the unit.
7. Avoid picking up hard, sharp objects with the vacuum cleaner as they may damage the cleaner parts. Do not stand on the hose assembly. Do not put a weight on the hose. Do not block the suction or the exhaustion part.
8. Switch the vacuum cleaner off at the machine before unplugging from the electrical outlet. Grasp the plug to disconnect cord from the electrical outlet before caring the dust bag and filters.
9. The plug must be removed from the socket out-let before cleaning or maintaining the appliance.
10. The use of an extension cord is not recommended.
11. If your vacuum cleaner is not operating correctly, switch off the power supply and consult an authorized service agent.
12. If the supply cord is damaged, it must be replaced by the manufacturer or its service agent or a similarly qualified person in order to avoid a hazard.
13. The vacuum cleaner is provided with a self-resetting thermal cut-out protection which automatically shut off current on over heating. Overheating can be caused by blockage in the filter, nozzle, tube or hose. After removing the cause and cooling the motor, vacuum cleaner automatically start again.

1 ASSEMBLING THE CLEANER



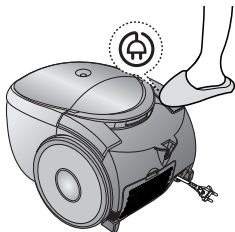
► Features may vary according to model.



Parking floor nozzle for easier storage.

2 OPERATING THE CLEANER

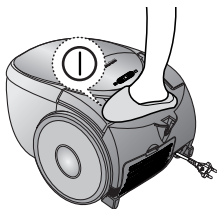
2-1 POWER CORD



NOTE

Grasp the plug to disconnect cord from the electrical outlet.

2-2 ON/OFF SWITCH (BODY CONTROL TYPE ONLY)



2-3 POWER CONTROL

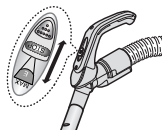
1) HANDLE CONTROL TYPE

• SLIDE TO THE STOP POSITION

Vacuum cleaner switches off. (stand by mode)

• SLIDE FORWARD TO MAX

Suction capacity increase smoothly up to maximum.

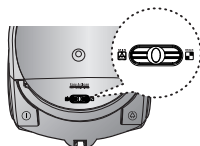


HANDLE CONTROL TYPE ONLY

2) BODY CONTROL TYPE

MIN = For delicate surface e. g. net curtains.

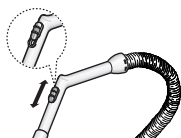
MAX = For hard floors and heavily soiled carpets.



BODY CONTROL TYPE ONLY

2-4 AIR CONTROL

To reduce suction for cleaning draperies, small rugs, and other light fabrics, pull the tap air until the hole is open.

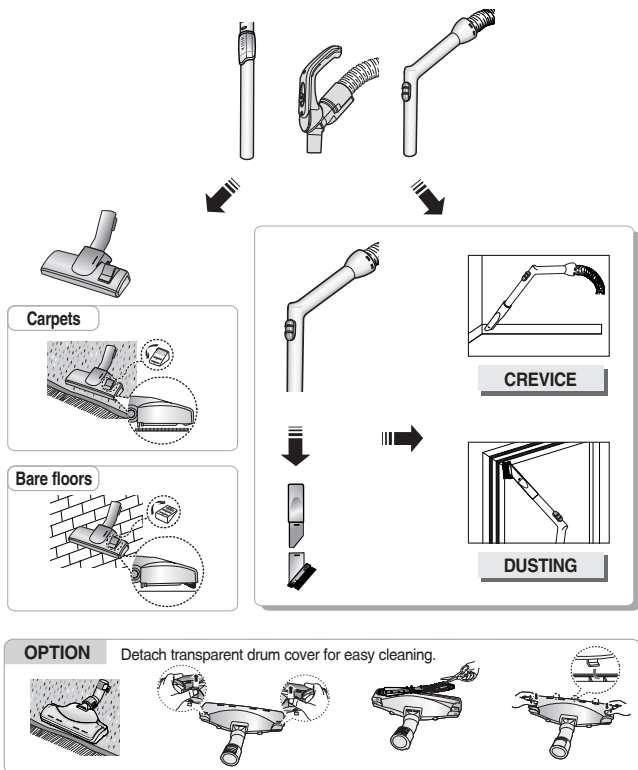


BODY CONTROL TYPE ONLY

2-5 USING CYCLONE FILTER (OPTIONAL)



2-6 USING FLOOR TOOLS



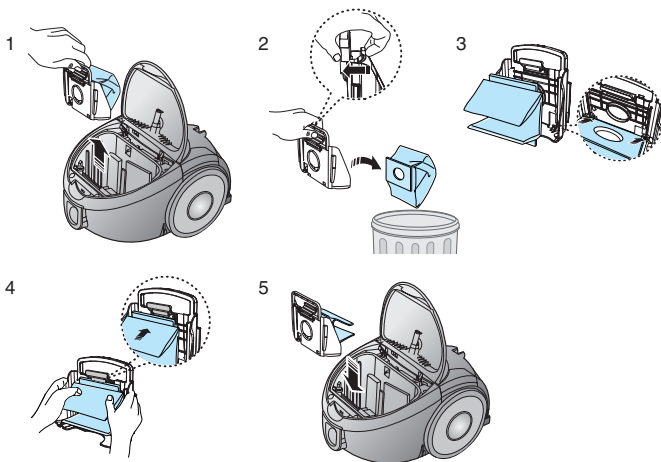
3 DUST FULL INDICATOR



If the "Filter Check" indicator turns to red color while you are cleaning, the dust bag requires replacement

NOTE : If the "Filter Check" indicator continues to display red color even after having changed bag into new one, turn the cleaner off and check if there is any clogging in the hose, tube, floor nozzle, or on the inlet/outlet filter.

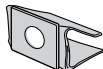
4 CHANGING THE DUST BAG



OPTIONAL

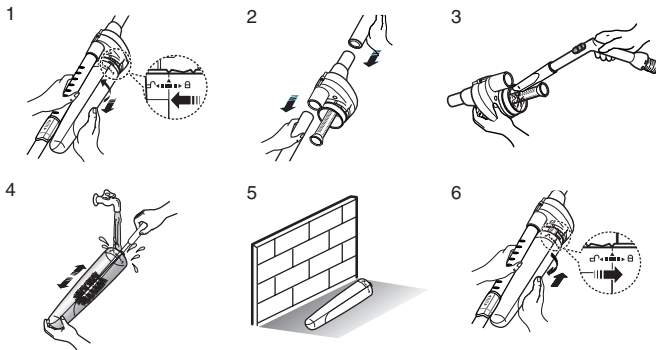
• FOR TEXTILE FILTER BAG

If the textile filter bag gets full after using, clean the textile filter bag and use it again.

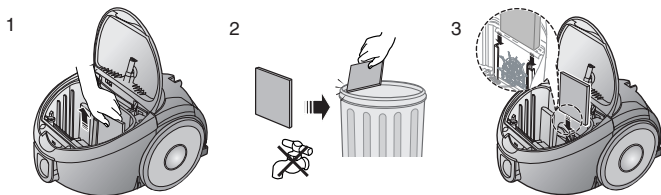


VP-95B TYPE

5 *CLEANING THE CYCLONE FILTER (Optional)*



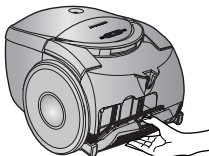
6 *CLEANING THE INLET FILTER*



NOTE : Regularly check if the filter gets clogged and if so, remove the dust particles from the filter as filter clogging may cause the damage on the motor or suction decrease.

7 OUTLET FILTER

1



2



HEPA FILTER(option)



MICRO FILTER(option)

- IF YOU HAVE A PROBLEM

PROBLEM	CAUSE	REMEDY
Motor does not start.	No power supply. Thermal cut-out.	Check cable, plug and socket. Leave to cool.
Suction force is gradually decreasing.	Nozzle, suction hose or tube is blocked.	Remove the object and change the dust-bag.
Cord does not rewind fully.	Check that the cord is not twisted or wound unevenly.	Pull the cord out 2-3m and push down the cord rewind button.
Vacuum cleaner does not pick up dirt.	Crack or hole in hose.	Check hose and replace if required.

If you have any comments or questions regarding Samsung products, contact the SAMSUNG customer care center.

Country	Customer Care Center ☎	Web Site
AUSTRALIA	1300 362 603	www.samsung.com/au
HONG KONG	3698-4698	www.samsung.com/hk
MALAYSIA	1800-88-9999	www.samsung.com/my
SINGAPORE	1800-SAMSUNG (7267864)	www.samsung.com/sg

MEMO



MEMO

SAMSUNG

MEMO



MEMO

SAMSUNG

MEMO



MEMO

SAMSUNG

