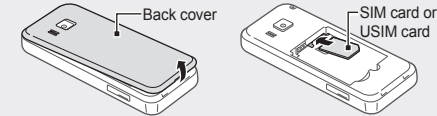
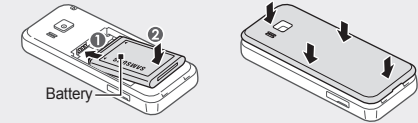


Install the SIM or USIM card and battery

- Remove the back cover and insert the SIM or USIM card.

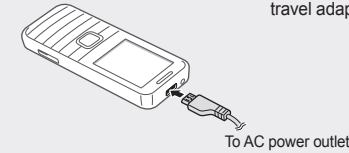


- Insert the battery and replace the back cover.



Charge the battery

- Plug the supplied travel adapter.
- When charging is finished, unplug the travel adapter.



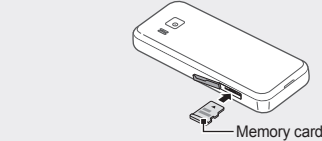
- Do not remove the battery before removing the travel adapter. Doing this may cause damage to the phone.

Insert a memory card (optional)

Your phone accepts microSD™ or microSDHC™ memory cards up to 8 GB (depending on memory card manufacturer and type).

-
- Formatting the memory card on a PC may cause incompatibility with your phone. Format the memory card only on the phone.
 - Frequent writing and erasing of data will shorten the lifespan of memory cards.

- Open the cover to the memory card slot on the side of the phone.
- Insert a memory card with the gold-coloured contacts facing down.



- Push the memory card in the memory card slot until it locks in place.
- Close the cover to the memory card slot.

Instructional icons

	Note: notes, usage tips, or additional information
	Followed by: the order of options or menu you must select to perform a step; for example: In Menu mode, select Messages → Create message (represents Messages , followed by Create message)
	Square brackets: phone keys; for example: [] (represents the Power/End key)
	Angled brackets: softkeys that control different functions at each screen; for example: <> (represents the OK softkey)

Turn your phone on or off

To turn your phone on,

- Press and hold [].
- Enter your PIN and press <**Confirm**> (if necessary).
- When the setup wizard opens, customise your phone as desired by following the screen.

To turn your phone off, repeat step 1 above.

Enter text

To change the text input mode

- Press and hold [#] to switch between T9 and ABC modes.
- Press [#] to change case or switch to Number mode.
- Press [*] to switch to Symbol mode.
- Press and hold [*] to select an input mode or change the input language.

T9 mode

- Press appropriate alphanumeric keys to enter an entire word.
- When the word displays correctly, press [0] to insert a space. If the correct word does not display, press the Navigation key up or down to select an alternate word.

ABC mode

Press an appropriate alphanumeric key until the character you want appears on the display.

Number mode

Press an appropriate alphanumeric key to enter a number.

Symbol mode

Press an appropriate alphanumeric key to enter a symbol.

-
- To move the cursor, press the Navigation key.
 - To delete characters one by one, press <**Clear**>. To quickly delete characters, press and hold <**Clear**>.
 - To insert a space between characters, press [0].
 - To enter punctuation marks, press [1].

Access menus

To access your phone's menus,

- In Idle mode, press the Confirm key to access Menu mode.
- Use the Navigation key to scroll to a menu or option.
- Press <**Select**>, <**OK**>, or the Confirm key to confirm the highlighted option.
- Press <**Back**> to move up one level; Press [] to return to Idle mode.

-
- When you access a menu requiring the PIN2, you must enter the PIN2 supplied with the SIM or USIM card. For details, contact your service provider.
 - Samsung is not responsible for any loss of passwords or private information or other damages caused by illegal software.

Make a call

- In Idle mode, enter an area code and a phone number.
- Press [] to dial the number.
- To end the call, press [].

Answer a call

- When a call comes in, press [].
- To end the call, press [].

Add a new contact

- The memory location to save new contacts may be preset depending on your service provider. To change the memory location, in Idle mode, select **Contacts** → <**Options**> → **Settings** → **Save new contacts to** → a memory location.

- In Idle mode, enter a phone number and press <**Options**>.
- Select **Add to Contacts** → **Create contact** → a memory location (if necessary).
- Select a number type (if necessary).
- Enter contact information.
- Press the Confirm key to add the contact to memory.

Send and view messages

To send a text or multimedia message

- In Menu mode, select **Messages** → **Create message**.
- Enter a recipient number and scroll down.
- Enter your message text. *See "Enter text"* For sending as a text message, skip to step 5. For attaching multimedia, continue with step 4.
- Press <**Options**> → **Add multimedia** and add an item.
- Press the Confirm key to send the message.

To view text or multimedia messages

- In Menu mode, select **Messages** → **Inbox**.
- Select a text or multimedia message.

Listen to the FM radio

- Plug a headset into the phone.
- In Menu mode, select **Applications** → **FM radio**.
- Press the Confirm key to start the FM radio.
- Press <**Yes**> to start automatic tuning.

The radio scans and saves available stations automatically.

- The first time you turn on the FM radio, you will be prompted to start automatic tuning.

- Control the FM radio using the following keys:

Key	Function
Confirm	Turn the FM radio on or off
Navigation	<ul style="list-style-type: none">Left/Right: Change the frequency; Search for an available radio station (press and hold)Up/Down: Adjust the volume

Adjust the volume

To adjust the volume of the ringtone

- In Menu mode, select **Settings** → **Sound profiles**.
- Scroll to the profile you are using.

- If you are using the silent or offline profile, you are not allowed to adjust the volume of the ringtone.

- Press <**Edit**> → **Volume** → **Call alert**.
- Scroll left or right to adjust the volume level and press <**Save**>.

To adjust the volume of voice during a call

While a call is in progress, press the Navigation key up or down to adjust the volume.

- In noisy environments, you may have difficulty hearing the calls while using the speakerphone feature. For better audio performance, use the normal phone mode.

Change your ringtone

To change the ringtone of the current profile

- In Menu mode, select **Settings** → **Sound profiles**.
- Scroll to the profile you are using.

- If you are using the silent or offline profile, you are not allowed to change the ringtone.

- Press <**Edit**> → **Voice call ringtone** or **Video call ringtone**.
- Select a ringtone.

Make fake calls

You can simulate an incoming call when you want to get out of meetings or unwanted conversations.

To activate the fake call feature

In Menu mode, select **Settings** → **Call** → **Fake call** → **Fake call hot key** → **On**.

To make a fake call

- In Idle mode, press and hold the Navigation key down.
- With the keys locked, press the Navigation key down four times.

Activate the mobile tracker

To activate the mobile tracker

When someone inserts a new SIM or USIM card in your phone, the mobile tracker feature will automatically send the contact number to two recipients to help you locate and recover your phone. To activate the mobile tracker,

- In Menu mode, select **Settings** → **Security** → **Mobile tracker**.
- Enter your phone password and press <**OK**>.

- The first time you access **Mobile tracker**, you will be prompted to create and confirm a password.

- Press the Confirm key to select **On**.
- Scroll down and press the Confirm key to open the recipient list.

- Press <**Search**> to open your contact list.

You can also enter phone numbers including a country code (with +) in the recipient list. Skip to step 8.

- Select a contact.
- Select a number (if necessary).
- When you are finished setting the recipients, press the Confirm key to save the recipients.
- Scroll down and enter the sender's name.
- Press the Confirm key → <**Accept**>.

Activate and send an SOS message

In an emergency, you can send SOS messages to your family or friends for help.

To activate the SOS message

- In Menu mode, select **Messages** → **Settings** → **SOS messages** → **Sending options**.
- Press <**Change**> to select **On**.
- Scroll down and press the Confirm key to open the recipient list.
- Press <**Search**> to open your contact list. You can also enter phone numbers including a country code (with +) in the recipient list. Skip to step 7.
- Select a contact.
- Select a number (if necessary).
- When you are finished setting the recipients, press the Confirm key to save the recipients.
- Scroll down and set the number of times to repeat the SOS message.
- Press <**Back**> → <**Yes**>.

To send an SOS message

- With the keys locked, press [] four times to send an SOS message to preset numbers. The phone switches to SOS mode and sends the preset SOS message.
- To exit SOS mode, press [].

Use the camera

To capture photos

- In Menu mode, select **Camera** to turn on the camera.
- Aim the lens at the subject and make any adjustments.
- Press the Confirm key to take a photo. The photo is saved automatically.
- Press <**Back**> to take another photo (step 2).

To view photos

In Menu mode, select **My files** → **Images** → a photo file.

To capture videos

- In Menu mode, select **Camera** to turn on the camera.
- Press <**Options**> → **Camcorder** to switch to the camcorder.
- Aim the lens at the subject and make any adjustments.
- Press the Confirm key to start recording.
- Press <**Stop**> to stop recording. The video is saved automatically.

To view videos

In Menu mode, select **My files** → **Videos** → a video file.

Listen to music

- In Menu mode, select **MUSIC**.
- Select a music category → a music file.
- Control playback using the following keys:

Key	Function
Confirm	Pause or resume playback
Navigation	<ul style="list-style-type: none">Left: Restart playback; Skip backward (press within 2 seconds); Scan backward in a file (press and hold)Right: Skip forward; Scan forward in a file (press and hold)Up/Down: Adjust the volume

SAMSUNG ELECTRONICS

Declaration of Conformity (R&TTE)

Samsung Electronics

declare under our sole responsibility that the product

GSM WCDMA Mobile Phone : GT-E3210B

to which this declaration relates, is in conformity with the following standards and/or other normative documents.

SAFETY	EN 60950-1 : 2006 +A11:2009 EN 50332-1 : 2000 EN 50332-2 : 2003
SAR	EN 50360 : 2001 EN 62209-1 : 2006
EMC	EN 301 489-01 V1.8.1 (04-2008) EN 301 489-07 V1.3.1 (11-2005) EN 301 489-17 V2.1.1 (05-2009) EN 301 489-24 V1.4.1 (09-2007)
RADIO	EN 301 511 V9.0.2 (03-2003) EN 300 328 V1.7.1 (10-2008) EN 301 908-1 V4.2.1 (03-2010) EN 301 908-2 V4.2.1 (03-2010)

We hereby declare that [all essential radio test suites have been carried out and that] the above named product is in conformity to all the essential requirements of Directive 1999/5/EC.

The conformity assessment procedure referred to in Article 10 and detailed in Annex[IV] of Directive 1999/5/EC has been followed with the involvement of the following Notified Body(ies).

BABT, Forsyth House,
Churchfield Road,
Walton-on-Thames,
Surrey, KT12 2TD, UK*
Identification mark: 0168

The technical documentation kept at :
Samsung Electronics QA Lab.

which will be made available upon request.
(Representative in the EU)
Samsung Electronics Euro QA Lab.
Blackbushe Business Park, Saxony Way,
Yateley, Hampshire, GU46 6GG, UK*

2010.12.29
(place and date of issue)

Joong-Hoon Choi / Lab Manager
(name and signature of authorised person)

CE0168

* It is not the address of Samsung Service Centre. For the address or the phone number of Samsung Service Centre, see the warranty card or contact the retailer where you purchased your product.