

# FEATURES

## FUZZY CONTROL

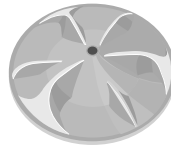
Fuzzy control operates with best washing course by sensing the washload like artificial intelligence.

## TRANSPARENT WINDOW -Option

This Transparent Window is the new concept to solve the curiosity of users to see inside of washing machine while operation. While operation, the laundry progress inside of washing machine can be checked by looking through the transparent window.

## BOOMERANG PULSATOR -Option

The Boomerang Pulsator helps water and detergent to go through fabrics efficiently while providing both the powerful water action to clean larger and heavier clothes and the gentle water action to clean all delicates with less wear and tear on clothes.



## WATERFALL FLOW

The Waterfall Flow injected from under the pulsator cascades with full force back into the tub, pushing down any clothes that float right under the water surface. It is this Waterfall Flow that enables this washing machine to effectively wash large and heavy items, such as bluejeans and blankets.

## MAGIC FILTER

This unique magic Filter ensures that all the lint inside the tub is captured for top quality filtering results to deliver consistently effective cleaning results.

## SOFTENER DISPENSER

The Softener Dispenser releases the fabric softener at the appropriate time when the last rinsing proceeds.

## WARNING!

To reduce the risk of fire, electric shock, or injury to persons when using your appliance, take care to adhere to the following precautions.

- ▶ **Where an unearthed power cord is not fitted, be sure that the washer is grounded.**

To avoid electrical shock use metal piping for the ground connection.

Take care not to ground the washer to gas pipes or telephone cables due to the danger of explosion from lightning strikes.

- ▶ **During spinning, don't put your hand in the spin basket.**

Because the spin basket is rotating at the high speed, rotating parts may injure your hand.



- ▶ **Openings must not be obstructed by carpeting when the washing machine is installed on a carpeted floor.**
- ▶ **Turn off water taps when the washer is not in use to avoid water pressure damage to the pump.**
- ▶ **To minimize the possibility of electric shock, unplug this appliance from the power supply or disconnect the washer at the household distribution panel by removing the fuse or switching off the circuit breaker before attempting any maintenance or cleaning.**
- ▶ **The appliance is not intended for use by young children or infirm persons without supervision.**
- ▶ **Young children should be supervised to ensure that they do not play with the appliance.**
- ▶ **If the power supply cord is damaged, it must be replaced by the manufacturer or its service agent or a similarly qualified person in order to avoid a hazard.**

- ▶ **Place clothes evenly into the washer as unevenly distributed laundry may cause excessive out-of-balance noise and vibration.**

- ▶ **Don't use excessively hot water. (65°C or more)**

Plastic parts may be deformed or damaged. Also, clothing may be deformed or bleached.

- ▶ **Before washing, check all pockets.** If nails or pins remain in pockets, they may damage the washer or clothes.

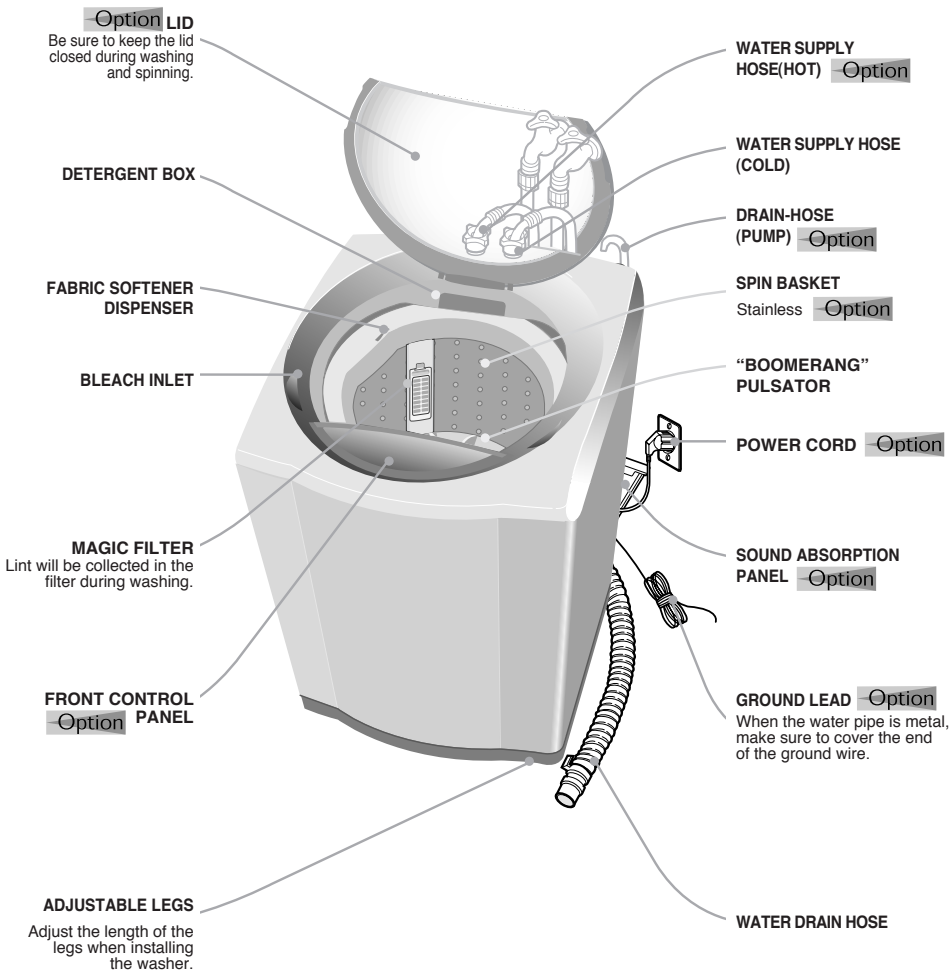
- ▶ **Don't press the control panel with a sharp object.**

Panel damaged or malfunction may occur.

If the control panel for this washer is damaged, it must be replaced by a repair shop appointed by the manufacturer, as special purpose tools are required.

- ▶ **Do not operate this appliance if it is damaged, malfunctioning, partially disassembled, or has missing or broken parts, including a damaged cord or plug.**
- ▶ **Do not store or use gasoline or other flammable vapors and liquids in the vicinity of this or any other appliance.**
- ▶ **The instructions for use shall specify the maximum mass or dry cloth in kg, for which the appliance is designed.**
- ▶ **If the appliance is supplied from a cord extension set or electrical portable outlet device the cord extension set or electrical portable outlet device should be positioned so it is not subject to splashing or ingress of moisture.**

# DESCRIPTION OF PARTS



## ① POWER BUTTON

Press this button once to operate.  
Press once again to turn the washer off.

## ② START/HOLD BUTTON

Use to pause and restart the operation.  
To change the washing procedure during operation, press this button to stop, and once again to restart after changing the procedure.

## ③ DELAY START BUTTON

Press this button when delay start washing is needed.

## ④ COURSE SELECT BUTTON

With every press of this button, the washing course changes;  
FUZZY → HEAVY → SPEEDY → WOOL → FUZZY

## ⑤ FUNCTION SELECT BUTTON

With every press of this button, the function changes;  
SOAK, WASH, RINSE, SPIN → WASH → RINSE → SPIN →  
WASH & RINSE → RINSE & SPIN → WASH, RINSE, SPIN

## ⑥ WATER LEVEL SELECT BUTTON

According to the washload, select the water level ;  
MEDIUM → HIGH → EXTRA LOW → LOW

## ⑦ WATER SUPPLY SELECT BUTTON Option

As you press this button, the type of water is selected as follows.

COLD → COLD+HOT → HOT → COLD

## ⑧ REMAINING TIME INDICATOR LIGHT

The indicator light shows the remaining time (in minutes) of each wash cycle.  
At the end of the cycle, the power automatically switches off.

## ⑨ FUNCTION INDICATOR LIGHT

The function in use indicator shows the current function as a flashing symbol.  
The light goes out at the end of the function.



# WASHING PROCEDURE

## Before starting washing, check the following;

Connect the water supply hose to the water tap. Leave a tap open.

Plug the power cord in. Make sure to lay down the drain hose. (In case no drain pump)

## Put the laundry into the washer and add detergent, too.

Be careful not to overload. Use right detergent for the fabrics you are washing.

### FUZZY COURSE Selects the best washing course automatically.

1. Press the POWER Button to "ON".



2. Press the START/HOLD button.

Water level is selected automatically.

Washing, rinsing, and spinning follow.

If you want to pause, press the START/HOLD button again. You can change the course when paused.



3. Close the lid.

### HEAVY COURSE

1. Press the power button to "ON".



2. Press the course select button once.



3. Press the START/HOLD button

Water level is selected automatically.

Washing, rinsing, and spinning follow.

If you want to pause, press the START/HOLD button again. You can change the course when paused.



4. Close the lid.

### SPEEDY COURSE Because washing is speedy, it is good for light or less stained laundry.

1. Press the power button to "ON".



2. Press the course select button twice.



3. Press the START/HOLD button

Water level is selected automatically.

Washing, rinsing, and spinning follow.

If you want to pause, press the START/HOLD button again. You can change the course when paused.



4. Close the lid.

### WOOL COURSE Extra low water level is not available. Cold water is selected.

1. Press the power button to "ON".



2. Press the course select button three times.



3. Press the START/HOLD button.

Washing, rinsing, and spinning follow.

If you want to pause, press the START/HOLD button again. You can change the course when paused.



4. Close the lid.

### CAUTION . . .

- Do not use water above 30°C for WOOL washing.
- Refer to the tag attached on the clothes for washing information.
- Fasten buttons and turn inside out before washing.
- Use the detergent indicated in the laundry.
- When the degree of dirt is extreme, soak the laundry in warm water for about 10 minutes before pressing the WOOL course button in order to enhance washing efficiency.

## DELAY START COURSE Select this course when you have to go out or do something else.

1. Press the power button to "ON".



POWER

2. Press the DELAY START button once.



DELAY START

You may change the delay start time with use the DEAYL START button.  
(from 3 hours to 18 hours)

3. Press the START/HOLD button and put the proper amount of detergent into tub.



START/HOLD

4. Close the lid.

The washing finishes by the time you reserved.

## MANUAL FUNCTIONS

FUNCTION	BUTTON
<b>SOAK FUNCTION</b> (Including WASH, RINSE, SPIN) Press the POWER button. Select the course(Press the course button). ➡FUZZY, HEAVY, SPEED, WOOL. Press the FUNCTION SELECT button once. Press the START/HOLD button once. <b>Water level is selected automatically.</b> <b>Washing, rinsing, and spinning follow.</b>	 Course Button      Function Button <b>once</b>
<b>WASH ONLY</b> Press the POWER button. Press the FUNCTION SELECT button twice. Press the START/HOLD button once. Washing goes on for 18 minutes. <b>When the FUNCTION button is pressed during washing, the wash time can be changed to between 3 and 25 minutes in duration.</b>	 Function Button <b>twice</b>
<b>RINSE ONLY</b> Press the FUNCTION button three times. Press the START/HOLD button once. Rinsing goes on for 15 minutes. <b>When the FUNCTION button is pressed during rinsing, the rinse times can be changed to between 1 and 5 times in duration.</b>	 Function Button <b>three times</b>
<b>SPIN ONLY</b> Press the FUNCTION button four times. Press the START/HOLD button once. Spin drying goes on for 9 minutes. <b>When the FUNCTION button is pressed during spinning, the spin time can be changed to from 5 to 11 minutes.</b>	 Function Button <b>four times</b>
<b>WASH AND RINSE</b> Press the FUNCTION button five times. Press the START/HOLD button once. Washing and rinsing go on for 38 minutes. <b>When the FUNCTION button is pressed during working, the rinse times can be changed to between 1 and 5 times in duration.</b>	 Function Button <b>five times</b>
<b>RINSE AND SPIN</b> Press the FUNCTION button six times. Press the START/HOLD button once. Rinsing and spin drying follow. <b>When the FUNCTION button is pressed during working, the rinse times can be changed to between 1 and 5 times in duration.</b>	 Function Button <b>six times</b>

# INSTALLATION & MAINTENANCE

## ENVIRONMENT

### Leave some space

Maintain at least 10cm between the washer and the wall.

### Place the washer on a sturdy flat surface.

If the washer is placed on an uneven or weak surface, noise or vibration occurs. (Allowable is 1°)

### Adjust the legs for even placement.

### Never install the washer near water.

Do not place the washer in steamy rooms or where the washer is directly exposed to rain. Moisture may destroy the electrical insulation causing an electrical shock hazard.

### Avoid direct sunlight or heaters.

As plastic and electrical components are affected by direct heat, never place the washer near furnaces, boilers, etc. Do not place under direct sunlight.

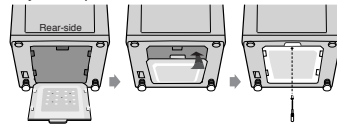
## IN CASE OF PUMP-DRAINED WASHER

- Take out the cap-hose and connect the outlet-hose.
- Be sure to join tightly the drain hose into the drain-outlet on the back of the machine.
- Install the drain hose in the position of about 70~80cm above the ground.



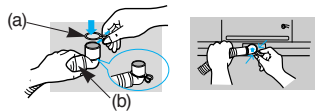
## ASSEMBLING THE SOUND ABSORBING PANEL -Option

Tilt the washer a little and lift up the panel until it clicks, finally fix the panel with screw to the base as shown in the figure.



## CONNECTING THE DRAIN HOSE

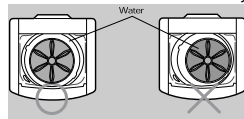
After pressing the joint ring(a), insert the drain hose(b) to drain direction.



## LEVELLING

SEE IF THE MACHINE IS PLACED LEVEL BY CHECKING THE POSITION OF THE WASHING TUB.

- Open the lid of the machine, pour water into the tub up to the level just below the pulsator, and adjust the legs so that the pulsator is positioned at the center of the water as shown in the figure.
- Place the machine more than 10cm away from the wall.

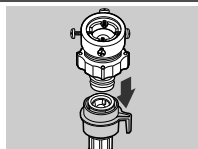


- Adjust the legs on feet for levelling.

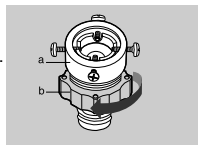


## CONNECTING THE WATER SUPPLY HOSE

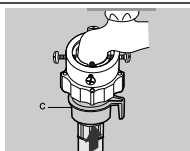
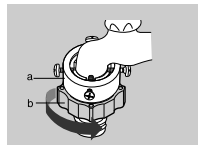
- Remove the adaptor from the water supply hose.



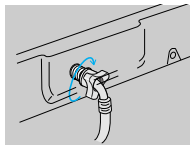
- First, using a "+" type screw driver, loosen the four screws on the adaptor. Next, take the adaptor and turn part(b) following the arrow for gap about 5mm between them.



- Connect adaptor to the water tap by tightening the screws firmly. Then, turn part (b) following the arrow and put (a) and (b) together.

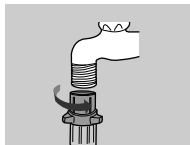


- Connect the water supply hose to the adaptor. Pull down the part (c) of the water supply hose. When the part (c) is released, the hose is automatically connected to the adaptor making a 'click' sound.



- Connect the other end of the water supply hose to the inlet water valve at the back of the washer. Screw the hose clockwise all the way in.

If the water tap is a screw type, assemble a water supply hose that fits to the tap as shown.

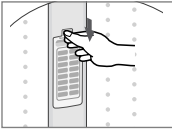


**NOTICE** After completing connection, if water leaks from the hose, then repeat the same steps. Use the most conventional type of faucet for water supply.

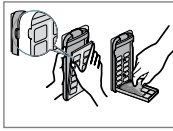
In case the faucet is square or too big, remove the spacing ring before inserting the faucet into the adaptor.

## CLEANING THE FILTER NET

1. Push the upper part of the filter and pull in.



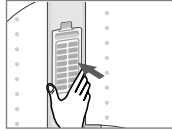
2. Open the cover as shown in the figure.



3. Clean the filter.

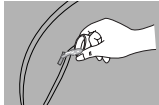


4. Close the cover and insert the lower part of the filter in the basket first and then push the filter with "click" sound.



## HOW TO ADD THE FABRIC SOFTENER

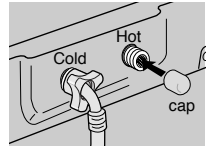
- When a proper amount (one time does) of fabric softener is stored in the softener inlet, it is automatically put in at the last rinsing cycle.
- Do not use detergent, bleach or starch into the Softener Inlet.
- Using too much softener may produce unsatisfactory results.
- Do not open the lid during the Spin Dry cycle. If added too early, its effectiveness will decrease.
- Do not leave the softener into the Softener Dispenser for a long time. Because softener became stiff.



Pour it slowly

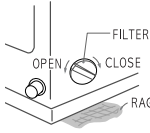
## IN CASE OF COLD-HOT WATER WASHER

- If you use only cold water inlet hose, you must fit the cap to the hot water inlet valve as following.



## HOW TO CLEAN THE FILTER Option

1. Place a rag under the washer filter not to wet the floor.
2. Rotate the filter counterclockwise and pull out the filter.
3. Remove dirt and rotate the filter clockwise until it locks in position.



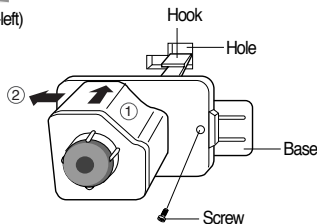
## HOW TO PUT THE DETERGENT IN

1. Open the detergent box by pulling in the direction of the arrow as shown in the figure and then put the powder detergent in the detergent box.
2. Put in one-time amount of detergent evenly so the detergent may not brim over the box.



## HOW TO ASSEMBLE THE LEGS Option

1. Check the 4 Legs. (Front-right, Front-left, Rear-right, Rear-left)
2. Lay down the Washing Machine to the front.
3. Insert the hook of leg in to the square hole of base.
4. Push the leg to the arrow direction to "Click".
5. Finally fix the legs on the base with screw like a figure.





**SAMSUNG**

# Owner's Instructions



Before operating the unit, please read this manual thoroughly, and retain for future reference.

<b>FEATURES</b>	1
<b>SAFETY INSTRUCTIONS</b>	2
<b>DESCRIPTION OF PARTS</b>	3
<b>CONTROL PANEL</b>	4
<b>WASHING PROCEDURE</b>	5
Fuzzy course	5
Heavy course	5
Speedy course	5
Wool course	5
Delay start course	6
<b>MANUAL FUNCTIONS</b>	6
<b>INSTALLATION &amp; MAINTENANCE</b>	7
Environment	7
In case of pump-drained washer	7
Assembling the sound absorbing panel	7
Connecting the drain hose	7
Levelling	7
Connecting the water supply hose	7
Cleaning the filter net	8
How to add the fabric softener	8
In case of cold-hot water washer	8
How to clean the filter	8
How to put the detergent in	8
How to assemble the legs	8
<b>TROUBLESHOOTING</b>	
<b>SPECIFICATIONS</b>	

## TROUBLESHOOTING

### Washing machine won't work

Is the water tap opened?  
Is the washer plugged in?  
Is the power cut off?  
Is there enough water?



### Water is not supplied

Is the water tap opened?  
Is the water cut off?  
Is the water supply hose or hose connection clogged?  
Is the water tap frozen?  
If water is not supplied in 1 hour, a buzzer will sound, and the remaining time indicator will show "7E".



### Water dose not drain

Is the drain hose down?(No pump)  
Is the drain hose frozen?  
Is the drain hose clogged?  
If the water dose not drain in 6 minutes, a buzzer will sound, and the remaining time indicator will show "E".

### Spinning does not work

Is the laundry spread out evenly in the washer?  
Is the washer set on a sturdy flat surface?

### Power won't cut off

This sign means power is not cut off automatically.  
Make sure there is lighting on the lamp whenever press the power button.



### Water is overflowed

Restart after spinning.  
If the error sign still indicates, call agency.

## IN CASE THE NEED FOR SERVICING ARISES.

Don't hesitate to call any agency nearby with your name, address and telephone number when anything wrong with your product occurs.

## SPECIFICATIONS

RATED POWER CONSUMPTION	WASH	330W	STANDARD WATER LEVEL	HIGH	56 <i>l</i>
	SPIN	240W		MED	48 <i>l</i>
DIMENSIONS		W540xD560xH850mm		LOW	41 <i>l</i>
				MIN	30 <i>l</i>
WEIGHT		31kg	WATER USAGE		158 <i>l</i>
WATER PRESSURE		0.05~0.78 MPa (0.5 ~ 8.0 <i>kg · f/cm<sup>2</sup></i> )	PULSATOR ROTATING SPEED		126rpm
WASHING TYPE		Stirring Type	SPINNING TUB ROTATING SPEED		760rpm

CODE NO. : DC68-01235A