



# NESPRESSO®

## ESSENZA AUTOMATIC



### C100

### Instruction Manual



Please read this Instruction Manual and the safety instructions before operating the appliance!



## IMPORTANT SAFEGUARDS

When using electrical appliances, basic safety precautions should always be followed, including the following:

- Read all instructions carefully.
- In case of emergency, immediately remove plug from power outlet.
- Do not touch hot surfaces. Use levers or knobs.
- To protect against fire, electric shock and personal injury, do not immerse cord, plug or appliance in water or other liquid. Never clean the appliance or the power cord if those are humid. Avoid touching the machine with wet hands.
- Close supervision is required when any appliance is used by or near children.
- Unplug appliance from outlet if leaving for an extended period of time (vacation, etc).
- Allow to cool before adding or removing parts, and before cleaning the appliance.
- Do not operate any appliance with a damaged cord or plug or after the appliance malfunctions, or has been damaged in any manner. Return appliance to the nearest authorized service facility for examination repair or adjustment.
- The use of accessory attachments not recommended by the appliance manufacturer may result in fire, electric shock or personal injury.
- Always attach plug to appliance first, then plug cord into the wall outlet. To disconnect, turn off appliance, then remove plug from wall outlet.
- Do not use appliance for other than intended purposes.
- Do not put fingers inside capsule housing, due to sharp edges.



## POWER CORD INSTRUCTIONS

Regarding your power cord:

- a) A short power cord (and detachable power cord) is provided to reduce risks that may result from longer and tangled cords.
- b) Longer detachable power cords or extension cords are available and may be used if proper care is used.
- c) If a long detachable power-supply cord or extension cord is used (1) the marked electrical rating of the detachable power-supply cord or extension cord should be at least as great as the electrical rating of the appliance, (2) If the appliance is of the grounded type 3-wire cord (3) the longer cord should be arranged so that it will not drape over the counter top or table top where it can be pulled on by children or tripped over.



## CAUTION

Household use only. Do not use outdoors. To reduce the risk of fire or electric shock, any servicing other than cleaning and user maintenance should be performed by an authorized service representative. Under no circumstances should you open the machine yourself.

- Check voltage to be sure that the voltage indicated on the name plate corresponds with your voltage.
- Never use warm or hot water to fill the water container. Use cold water only!
- Keep your hands and the cord away from hot parts of the appliance during operation.
- Never clean with scouring powders or sharp tools.



## SAFETY INSTRUCTIONS

Read these instructions carefully before using your *Nespresso* machine.

- Do not plug the machine into anything other than a grounded electrical socket. Verify that the voltage indicated on the technical specifications plate on the bottom of the unit corresponds to your electrical installation. The use of incorrect connection voids warranty.
- Do not place your *Nespresso* machine on a hot surface (electrical heating plate for example) or near a flame.
- Do not lift the closing lever while the machine is functioning since coffee is extracted under high pressure.
- Do not use the machine without the drip tray and drip grid in place.
- Ensure that the electrical cord does not hang over edge of table or counter. Do not disconnect the electrical plug by pulling on the cord.
- Avoid touching the electrical cord as well as any other part which may become hot during the use of the machine.
- For descaling, adhere to the directions which follow:
  - a) Preparation: please read carefully the safety instructions on the descaling packaging.
  - c) Descaling: do not open the closing handle during the descaling process.
  - d) Rinse: rinse the water tank and clean the machine to avoid any residual descaling agent.
- Waste disposal: Unplug the machine. Cut off power cord near the housing. Dispose machine and cable at your public disposal or customer service.

## Save these Instructions



# 8 Troubleshooting

a



No light indicator



Check mains: plug, voltage, fuse. In case of problems call *Nespresso Club*

b

No coffee, no water

- Water tank empty -> fill water tank

- Venting



1. Open + 2. hold



Close

- Descale, if necessary -> point 7

c

Coffee not hot enough



Preheat cup, descale if necessary

d

Capsule area leaking (water in capsule container)



Position capsule correctly. If leakage: call *Nespresso Club*

e



Irregular interval blinking



Send machine to repair or call *Nespresso Club*



## Specifications



220 - 240 V, 50 Hz, max. 1260 W



max. 19 bar



~ 6.6 lbs



34 oz



14 °F ... 113 °F



6.5 in | 9.9 in | 11.4 in



## Optional Accessory

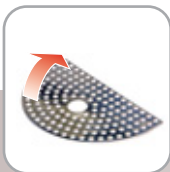


*Nespresso* descaling kit

C100\_Z1\_01.06



# 1 First use or after a longer period of non-use



Remove plastic film



Fill water tank



Place a container



Plug into mains + switch ON



Heating up



Ready



Rinse: let water run through 6x

No water ☹️ see: **8b**

# 2 Daily: before the 1st coffee



Fill water tank with fresh water



Switch ON



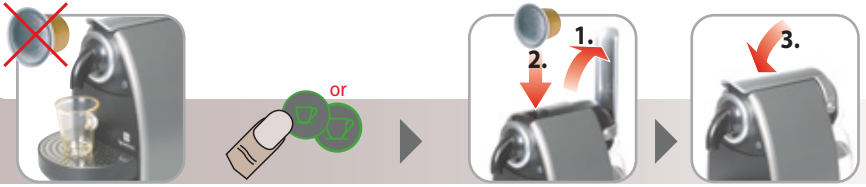
Heating up



Ready

# 3 Espresso Lungo

## Preparation



Preheat cup: 1 cup of water

Insert capsule



Flow speed depends on coffee variety

Eject capsule (drops into capsule container)

## Programming the fill up level



Insert capsule

Press and hold button for at least 3 seconds, release at desired level

## Resetting the programmed large and small coffee flows to factory settings



Switch OFF

Press and hold big cup button

Switch ON

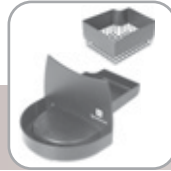


# 4

## Daily: After the last coffee



Switch off



Empty capsule container + drip tray



Rinse and empty water tank

# 5

## Clean: When necessary



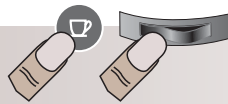
Damped cloth, cleaning agent mild

# 6

## Empty system: After long period of non-use, for frost protection and after repair



Switch off and remove water tank



Press small cup button & switch on simultaneously



Buttons blink alternately



1. Open  
2. push and hold for 3 secs.



Close



Switch off  
(machine blocks for 10 min and is ready to be transported)




# 7 Descaling



Carefully read safety instructions on decalcifier package.  
Decalcifier is aggressive to surface of casing.  
Vinegar: Danger of damage

Water hardness    Descalce after

fH	dH	Descalce after
36	20	300
18	10	600
0	0	1200

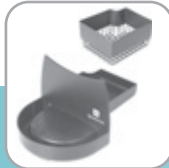


## Preparation

a



Remove capsule



Empty capsule container + drip tray



Rinse machine, see 1



If leakage see:

8d

b



Fill with Nespresso descaler and 0.5 l water



Place a recipient



1. Lift lever,  
2. insert filter,  
3. close lever



## Descaling

Avoid using vinegar as it can damage your machine.

c



Press both buttons simultaneously for 3 seconds



Start

Let descaling solution run through twice  
90 sec



Stop



Refill water tank once more with descaling solution and repeat step

## Rinse

d



Remove filter



Empty, rinse and fill water tank with fresh water



Rinse machine, see 1



Exit: press both buttons simultaneously for 3 seconds