

PHILIPS

NORELCO

BodyGroom



**BG2022,
BG2020
Rechargeable
Cordless**

Register your product and get support at
www.philips.com/norelco

IMPORTANT SAFEGUARDS

When using an electric appliance, basic precautions should always be followed, including the following:

Read all instructions before using this appliance.

DANGER

To reduce the risk of electric shock:

1. Do not reach for a charging stand while plugged in that has fallen into water. Unplug immediately.
2. Charging stand is not for immersion or for use while bathing or in a shower.
3. Do not use an extension cord with this appliance.
4. Do not place or store charging stand where it can fall or be pulled into a tub or sink. Do not place or drop a charging stand into water or other liquid while plugged in.
5. Always unplug the charging stand from the electrical outlet immediately after use, except when groomer is (re)charging.
6. Remove power supply cord from charging stand before cleaning.

WARNING

To reduce the risk of burns, fire, electric shock or injury to persons:

1. Close supervision is necessary when this groomer/charging stand is used by, on, or near children or invalids.
2. Use this groomer/charging stand for its intended household use as described in this manual. Do not use attachments not recommended by Philips Electronics North America Corporation.
3. Never operate this groomer/charging stand if it has a damaged cord or charging plug, if it is not working properly, if it has been dropped or damaged, or dropped into water. For assistance call 1-800-243-3050.
4. Keep the groomer, charging stand, cord and charging plug away from heated surfaces.
5. Never drop or insert any object into any opening.
6. Never operate the groomer with the air openings blocked or while on a soft surface, such as a bed or couch, where the air openings may be blocked. Keep the air openings free of lint, hair, and the like.
7. Do not charge groomer outdoors, in humid conditions or operate where aerosol (spray) products are being used or where oxygen is being administered.
8. Always check foil, cutters, and trimmers before using the groomer. Do not use the groomer if foil, cutters or trimmers are damaged, as injury may occur.
9. Always attach plug to charging stand first, then charging plug into outlet. To disconnect, remove charging plug from outlet.
10. Never put the groomer/charging stand in direct sunlight or store at a temperature above 140°F.
11. Groomer is water-safe and can be rinsed under running tap water or used in shower. Do not submerge groomer in water.
12. To prevent possible damage to the cord, do not wrap cord around the charging stand. Do not store in a damp environment.

SAVE THESE INSTRUCTIONS

IMPORTANT: The power plug contains a transformer. Do not cut off the power plug to replace it with another plug, as this will cause a hazardous condition.

Registration

Congratulations on your purchase and welcome to Philips Norelco!

To fully benefit from the support that Philips Norelco offers, register your product at www.philips.com/norelco

Create Your Own Look

Your new Philips Norelco Body Groomer offers you a safe, gentle and quick way to trim and shave every body part below the neckline. This unique combination allows you to create your own look safely and with less irritation. The trimming combs give you multiple hair length settings to choose from so you can control the exact hair length you desire or use the Groomer without the combs to completely shave off body hair. Use wet or dry, your BodyGroom all-in-one grooming system with self-sharpening blades will give you a precise trim and shave anywhere, every time.

Like many new products, your Philips Norelco Groomer may take a little getting used to. If you are shaving sensitive areas for the first time, your skin may need time to adapt. Give yourself some time to acquaint yourself with your new Groomer.

Stick with it! If you alternate trimming or shaving methods during the adjustment period it may make it more difficult to adapt to the Philips Norelco grooming system. If you are still not convinced, Philips Norelco will refund you the full purchase price as long as the request is received within 45 days of purchase.

Be certain to read the instructions and important information in this booklet to begin using your new Groomer to create your own look.

Features

- A Small Trimming Comb
 - B Medium Trimming Comb
 - C Large Trimming Comb
 - D Shaving Foil Head Assembly
 - E ON/OFF Button
 - F Hanging Cord
 - G Store & Charge Stand
 - H Adaptor with Charging Indicator Light
 - I Cleaning Brush
- Full 2-Year Warranty
45-Day Money-Back Guarantee



This symbol indicates that the Groomer can be used in the bath or shower.

LED Charging Indicator

- The Charging Indicator Light on the adaptor will light up to indicate Groomer is (re)charging.

Before First Use

- ▶ Charge the Groomer before you start using it (see 'Charging'). Make sure the Groomer is switched off before you start charging it.
- ▶ Before using, check foil, cutters and trimmers for wear or damage. If foil, cutters or trimmers show signs of wear or damage, do not use Groomer as injury may occur. Do not use Groomer until foil, cutters or trimmers have been replaced.

Important

- ▶ Only use the adaptor charging plug provided to charge the Groomer.

Charging

- ▶ Battery performance is best if you recharge only when the batteries are (almost) completely empty.
- ▶ Charging or recharging at temperatures below 40°F or higher than 95°F adversely affects life time of batteries.
- ▶ Continuously recharging will reduce life of batteries.
- ▶ This Groomer will not operate corded directly from the electrical outlet.

1 Connect cord to charging stand (Fig. 1); plug the adaptor charging plug into any 120V outlet. Use only the cord provided. Slide the Groomer down into the charging stand making sure the hanging cord is pointing forward when you place the Groomer in the charging stand (Fig. 2). The charging indicator on the adaptor will light up to indicate Groomer is (re)charging (Fig. 3).

2 Charging requires a full 8 hours. A fully charged Groomer has a cordless grooming time of up to 50 minutes.

Recharging

- 1** Recharging requires a full 8 hours.
- 2** When Groomer is fully charged, disconnect the adaptor charging plug from outlet.
- 3** Do not keep charging stand permanently plugged into outlet.

Shaving

- ▶ Use this Groomer for its intended household use as described in this manual.
 - ▶ Do not use this Groomer to shave or trim facial or scalp hair. The Groomer should only be used on skin below the neckline.
 - ▶ When shaving sensitive areas for the first time, you may feel some discomfort, irritation or reddening of the skin. This is normal as your skin needs time to adjust to shaving.
 - ▶ If your hair is longer than .40 inch /10 millimeters, trim hair using a trimmer comb first for optimum shaving results.
 - ▶ For dry use, be certain that your skin is clean and dry before using the Groomer.
 - ▶ For wet use, you may prepare your skin with lathered soap or shaving foam before using the Groomer.
 - ▶ Make sure the shaving foil is in complete contact with your skin for the closest shave and minimum foil wear.
 - ▶ Pressing too hard may cause skin irritations.
 - ▶ Practice is best for optimum results.
-
- 1** If a trimming comb is attached to the Groomer, remove it by gently pushing the outer comb tooth sideways with your thumb (Fig. 4).
 - 2** Turn Groomer ON by pressing the on/off button.
 - 3** Stretch your skin taut with your free hand and gently press Groomer to skin and move it slowly and smoothly against the direction of hair growth (Fig. 5). **DO NOT** press too hard. Too much pressure can distort the foil and cause skin irritation.
 - 4** Make sure the shaving head is always in full contact with your skin.
 - 5** Turn Groomer OFF by pressing the on/off button.

Trimming

- ▶ If you are trimming for the first time, be careful. Do not move the Groomer too fast. Make smooth and gentle movements.
- ▶ Practice trimming with the large comb first to prevent accidentally trimming hairs too short.
- ▶ Trimming is easier and more effective when skin and hair are dry.

1 Attach desired trimming comb by snapping it onto the Groomer. The tip of the comb can point in either direction (Fig. 6).

Trimming Length Setting Table

- ▶ The trimming combs allow you to cut hair to 3 different lengths:

Trimming Comb	Hair Length after cutting
Small	.12 in./3 mm
Medium	.28 in./7 mm
Large	up to .40 in./up to 10 mm

2 Turn Groomer ON by pressing the on/off button.

3 Hold Groomer as shown and move against the direction of hair growth making sure the tips of the comb point in the same direction as you are moving the Groomer. Always make smooth and gentle movements and be sure the surface of the comb always stays in contact with your skin (Fig. 7).

NOTE: Since all hairs do not grow in the same direction, you may want to try different trimming positions (i.e. upwards, downwards, or across). Practice is best for optimum results.

4 Turn Groomer OFF by pressing the on/off button.

Cleaning

- ▶ The Groomer should be cleaned after each use.
- ▶ Always switch Groomer OFF and remove cord from charging stand and charging plug from outlet before cleaning.
- ▶ Never clean, remove or replace shaving head assembly while motor is on.
- ▶ Do not apply pressure to shaving head. Do not touch foil with hard objects as this may dent or damage foil or cutters. If damage occurs, replace damaged parts.
- ▶ Do not use Groomer if foil, cutters or trimmers are damaged or broken as injury may occur.
- ▶ Only use the cleaning brush supplied. Any other brush may cause damage.

1 Always switch Groomer OFF, remove the charging plug from outlet and remove cord from charging stand before cleaning.

2 If a trimming comb is attached to the Groomer, remove it by pulling it off the appliance.

3 Remove the shaving foil head by pulling it off the appliance (Fig. 8).

Hold the shaving head by the plastic housing only.

4 Brush the hairs off the shaving foil and cutter block. Make sure to also brush away any hairs collected under the trimmers (Fig. 9).

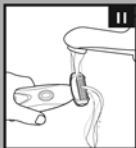
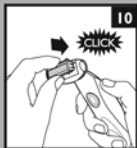
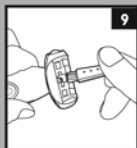
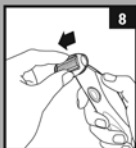
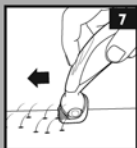
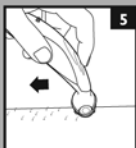
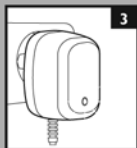
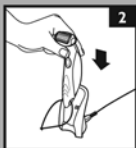
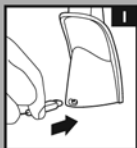
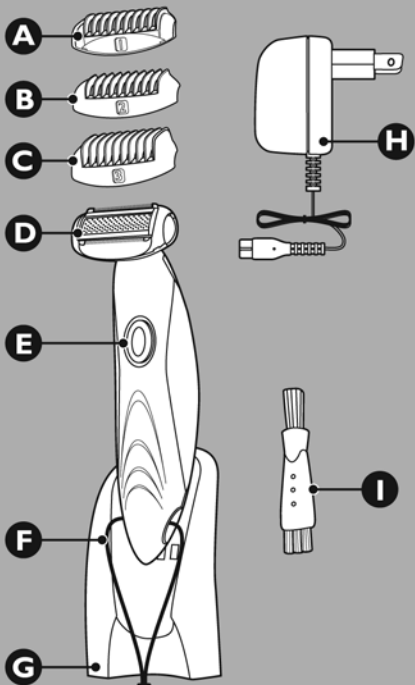
5 Reattach the shaving foil head by snapping it back onto the Groomer (Fig. 10). You will hear a “click”.

6 Rinse the Groomer under warm or cool running tap water to rinse away any remaining shaving/trimming debris (Fig. 11).

7 After rinsing, gently shake excess water from Groomer. Wipe the Groomer body dry with a clean towel or cloth.

- ▶ Do not use a towel or cloth to dry shaving foil or cutters as this may cause damage; allow to air dry.
- ▶ Never clean the Groomer with harsh chemicals as they can damage the Groomer.

Features



Replacing the Shaving Foil Head

- ▶ If the shaving foil and cutters are worn or damaged, do not continue using the Groomer. Replace the shaving foil and cutters immediately.
- ▶ It is recommended that you replace your shaving foil and cutters once a year.
- ▶ A worn or damaged shaving foil or cutters should only be replaced with an original Philips Norelco shaving foil, model BG2000, which is available on the Philips Norelco website, www.philips.com/norelco or call 1-800-243-3050 for assistance.
- ▶ The foil is a precision part. Handle with care.

- 1** Always switch Groomer OFF and remove Groomer from the charging stand before replacing shaving foils.
- 2** Remove the shaving foil head by pulling it off the appliance (Fig. 8).
- 3** Place the new shaving foil head on the Groomer by snapping it into place (Fig. 10). You will hear a “click”.

After replacing the shaving foil head, check that the shaving head is firmly attached before using Groomer.

This Groomer has no other user-serviceable parts. For assistance call 1-800-243-3050.

Storage

- ▶ The Groomer can be placed in the charging stand for safe storage. If storing Groomer in stand, remove the plug from the outlet as soon as the razor is fully charged.
- ▶ Be sure Groomer is turned off. Remove cord from outlet and charging stand before storing in a safe, dry location where it will not be crushed, banged, or subject to damage.
- ▶ Do not wrap cord around Groomer/charging stand when storing.
- ▶ Store cord in a safe location where it will not be cut or damaged.
- ▶ Do not place or store Groomer/charging stand where it can fall or be pulled into a tub or sink, water or other liquid while plugged in.

Assistance

For assistance, call toll free:

1-800-243-3050

or visit our website:

www.philips.com/norelco

Information is available 24 hours a day, 7 days a week.

Accessories

- ▶ For maximum Groomer performance replace shaving foil head once a year.
- ▶ Replacement Shaving Foil Head
Model BG2000—Philips Norelco Replacement Shaving Foil Head
- ▶ Replacement Parts may be purchased on our website www.philips.com/norelco

PHILIPS



45-DAY MONEY- BACK GUARANTEE

If you are not fully satisfied with your Philips Norelco Product, Philips Norelco will refund you the full purchase price.

The product must be shipped prepaid by insured mail, insurance prepaid, and have the original sales receipt, indicating purchase price and the date of purchase, enclosed. We cannot be responsible for lost mail. The product must be postmarked no later than 45 days after the date of purchase. Philips Norelco reserves the right to verify the purchase price of the product and limit refunds not to exceed suggested retail price.

To obtain money-back guarantee return authorization form, call 1-800-243-3050 for assistance.

4203 000 3314 3

Full Two-Year Warranty

Philips Electronics North America Corporation warrants each new Philips Norelco Product, Model BG2022, BG2020 (except foil and cutters) against defects in materials or workmanship for a period of two years from the date of purchase, and agrees to repair or replace any defective product without charge. **IMPORTANT:** This warranty does not cover damage resulting from accident, misuse or abuse, lack of reasonable care, the affixing of any attachment not provided with the product or loss of parts or subjecting the product to any but the specified voltage.* Use of unauthorized replacement parts will void this warranty.

PHILIPS ELECTRONICS NORTH AMERICA CORPORATION WILL NOT PAY FOR WARRANTY SERVICE PERFORMED BY A NON-AUTHORIZED REPAIR SERVICE AND WILL NOT REIMBURSE THE CONSUMER FOR DAMAGE RESULTING FROM WARRANTY SERVICE PERFORMED BY A NON-AUTHORIZED REPAIR SERVICE. NO RESPONSIBILITY IS ASSUMED FOR ANY SPECIAL, INCIDENTAL, OR CONSEQUENTIAL DAMAGES.

In order to obtain warranty service, simply go to www.philips.com/norelco or call 1-800-243-3050 for assistance. It is suggested that for your protection, you return shipments of product by insured mail, insurance prepaid. Damage occurring during shipment is not covered by this warranty.

NOTE: No other warranty, written or oral, is authorized by Philips Electronics North America Corporation. This warranty gives you specific legal rights, and you may also have other rights that vary from state to state. Some states do not allow the exclusion or limitation of incidental or consequential damages, so the above exclusion and limitations may not apply to you.

* Read enclosed instructions carefully.

Manufactured for:

Philips Consumer Lifestyle

A Division of Philips Electronics North America Corporation

1600 Summer Street – 5th Floor

Stamford, CT 06905-5125



This symbol on the product's nameplate means it is listed by Underwriters Laboratories, Inc.

Norelco is a Registered Trademark of Philips Electronics North America Corporation.

PHILIPS is a Registered Trademark of Koninklijke Philips Electronics N.V.

© 2008 Philips Electronics North America Corporation. All Rights Reserved.