



## ELECTRIC PEDESTAL KETTLE



Model	Capacity	
EP-20	20 Gallon	76 Litre
EP-30	30 Gallon	114 Litre
EP-40	40 Gallon	152 Litre
EP-60	60 Gallon	227 Litre
EP-80	80 Gallon	303 Litre
EP-100	100 Gallon	379 Litre

### SPECIFICATIONS:

Shall be a CROWN Model \_\_\_\_\_ self-generating, electric, pedestal kettle. A double wall kettle interior shall form a steam jacket around the lower  $\frac{2}{3}$  of the kettle. The jacket enclosure shall contain water and anti-freeze which is factory sealed. The bottom of the kettle shall be of hemispherical design for superior heat circulation. Pedestal base shall have four  $\frac{7}{16}$  of an inch holes evenly spaced for securing unit to floor.

Construction shall be all welded satin finish, stainless steel, type 304.

The controls shall include a power switch, thermostat, pilot light, low water light, vacuum/pressure gauge, safety valve, and low water shut off.

All kettles shall be standard with removable elements.

The kettle shall operate in a temperature range of 100°F to 290°F (38°C to 144°C) at a maximum pressure of 50 psi (3.4 kg/cm<sup>2</sup>).

Convenience features shall include a counterbalanced hinged stainless steel cover and a 2" (50 mm) sanitary drawoff valve with a heat resistant handle.

### OPERATION SHALL BE BY:

Electrically, self-generating closed steam system equipped for operation on:

- 208 VAC, 3 Phase, 50/60 Hz
- 230 VAC, 3 Phase, 50/60 Hz
- 240 VAC, 3 Phase, 50/60 Hz

### OPTIONAL ITEMS AT EXTRA COST:

- Type 316 stainless steel liner for high acid content products
- Triple basket assembly
- 3" (76 mm) draw-off valve
- High wattage heaters for faster heating
- Double pantry faucet with swing spout
- Single pantry faucet with swing spout
- Strainer for draw-off valve
- Spring assist cover for 20-40 gallon
- 380, 415 or 480 VAC, 3 Phase, 50/60 Hz
- 220/380, 240/415 VAC, 3 Phase, 4 Wire
- Graduated measuring stick
- Strainer hook



## SERVICE CONNECTIONS

EC – Electrical Connection to be as specified on data plate.

## ELECTRICAL CHARACTERISTICS

MODEL	208V		230V		240V		380V		415V		480V	
	KW	AMP	KW	AMP	KW	AMP	KW	AMP	KW	AMP	KW	AMP
EP-20	12	33.4	12	30.1	12	28.9	12	18.3	12	16.7	12	14.5
EP-30	15	41.7	15	37.7	15	36.1	15	22.8	15	20.8	15	18
EP-40	18	50	18	45.2	18	43.4	18	27.4	18	25	18	21.7
EP-60												
EP-80												
EP-100	24	66.6	24	60.2	24	57.7	24	36.5	24	33.3	24	28.9

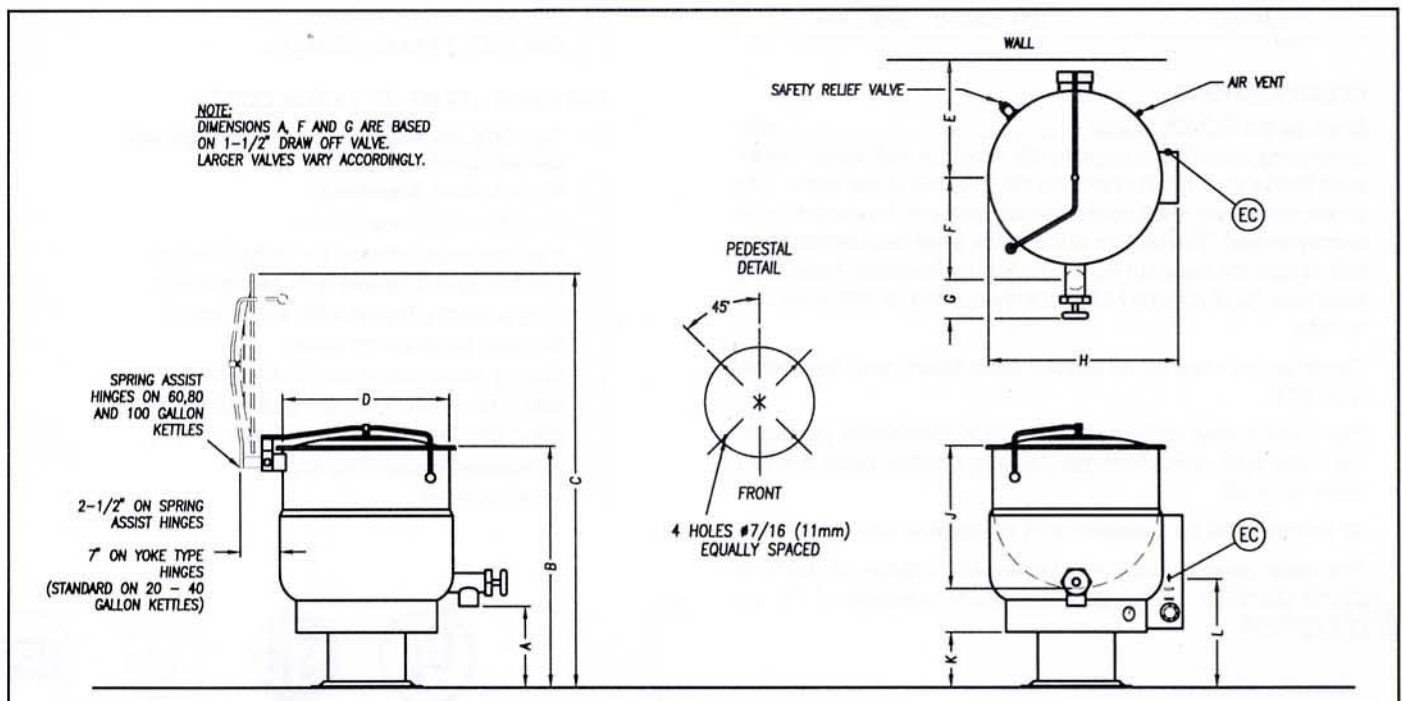
Optional at Extra Cost:

24KW Elements on EP-40, EP-60 & EP-80

33KW Elements on EP-60, EP-80 & EP-100

## DIMENSIONS

MODEL	CAPACITY		A	B	C	D	E	F	G	H	J	K	L
EP-20	20 gallons	inches	18	38	60.5	21	18.5	13.75	6	23.75	18	14	21
	76 litres	mm	457	965	1537	533	470	350	152	629	457	356	533
EP-30	30 gallons	inches	16	38	63.5	24	20	15	6	27.75	20	12.5	19
	114 litres	mm	406	965	1613	610	508	381	152	705	508	318	483
EP-40	40 gallons	inches	13.5	38	65	26	21	16	6	29.75	22.5	9	17
	152 litres	mm	343	965	1651	660	533	406	152	756	572	229	432
EP-60	60 gallons	inches	14	42	75	29.5	19	17	6	33.75	26	11	17.25
	227 litres	mm	356	1067	1905	749	483	432	152	857	660	280	438
EP-80	80 gallons	inches	15	45	81	33	20.5	18.5	6	36.75	28	12.75	18
	303 litres	mm	381	1143	2058	838	521	470	152	933	711	324	458
EP-100	100 gallons	inches	15	48	87	35.5	22	20.5	6	40	30	13	20.5
	379 litres	mm	381	1219	2210	902	559	521	152	1016	762	330	521



As continued product improvement is a policy of Crown, specifications are subject to change without notice.