



ULTRASONIC HUMIDIFIER

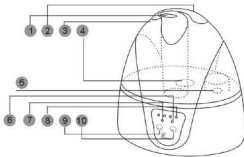
MODEL No. AU-200E

INSTRUCTION MANUAL

Please read carefully before use



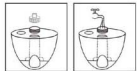
STRUCTURE



1. Mist outlet
2. Handle
3. Water tank
4. Water inlet Cover
5. Energy exchanger
6. Humidifying indicator
7. Power indicator
8. Timer indicator
9. On/Off button
10. Timer button

OPERATION

1. Place the humidifier on a clean dry surface that is level and stable. The unit should not be in direct sunlight.
2. Lift the water tank and unscrew the water intake knob, pour in clean water. (See illustrations at right)
3. Replace the water tank intake knob, wipe away any water on the outside of the tank. Put the tank cover back on the unit.
4. Plug the humidifier into the electrical outlet.
5. Push the power button, and the mist will begin coming from the mist outlet in a few minutes.
6. To set the timer. Press the timer button to choose working time from one hour to eight hours.
7. The humidifier can work up to 10 hours on a full tank of water.
8. This humidifier has a safety features which will turn the unit off if the water runs out or if the circuit is overheated.
9. As with any electrical appliance, close supervision of the humidifier is still required while it is in use.



IMPORTANT SAFETY INSTRUCTIONS

1. To avoid electric shock, do not pull on the cord to unplug the unit from an outlet, and do not unplug from the outlet with wet hands.
2. If the unit accidentally tilted, turn off the power before repositioning the unit.
3. Do not touch the energy exchanger when the unit is connected to a power source.
4. Turn the humidifier off before disconnecting the power cord from the body of the unit.
5. If the power cord is damaged, it must be replaced by the manufacturer in order to avoid any safety hazards.
6. Never try to disassemble the humidifier!

CAUTIONS

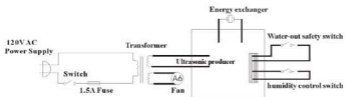
1. Do not add water over 104°F to the water tank.
2. If the unit will be subject to temperature below 32°F, make sure that all the water is emptied from the unit to prevent damage.
3. Do not use any kind of additive or solution in the water!
4. Do not pick up or move the unit when the tank is full, the water could overflow into the mechanical parts.
5. Keep the humidifier away from direct sunlight or heat sources (fireplace, heater, stove, etc.)
6. For best performance, do not place the humidifier where there is a strong air flow.
7. Never add water directly into the water channel on the base or mist outlet.
8. If the humidifier will not be used for a long period of time, disconnect it from the power supply (outlet).
9. If it is necessary to drain excess water from the water channel, you must unplug the unit first! Draining the water channel without disconnecting the power will incapacitate the energy exchanger.
10. When in use, the humidifier should have ample clearance from furniture and other appliances.

Ultrasonic Humidifier MODEL No. AU-200E

TECHNICAL DATA

Rated Voltage:	120 V AC	Water Capacity:	2.6Liter
Rated Frequency:	60 Hz	Max. Evaporating Rate:	300ml/h
Max. input Power:	25W	Noise:	<35dB

CIRCUIT DIAGRAM



CLEANING, MAINTENANCE AND STORAGE

Be sure to unplug the humidifier from the power supply before refilling the water tank, cleaning the unit, or performing any kind of maintenance.

1. Clean the water tank

Cleaning is suggested at least once per week.

Lift the water tank, remove the water intake cover and clean with mild soap and a soft cloth.

2. Clean the water channel and the energy exchanger to remove impurities or debris.

(A) Cleaning is suggested at least once per week, but if there is any residue on either the water channel or energy exchanger it should be cleaned immediately. Use a soft cloth to remove any debris.

(B) The humidifier comes with a special mild detergent soap that is designed for use with this product. To use, apply two to three drops of the solution to the energy exchanger, wait one minute then scrub with a nylon brush. You can then flush the area with clean water and dry it with a soft cloth.

IMPORTANT: Never use sharp or metallic tools or implements on humidifier!

3. Clean the humidifier surface with a soft cloth to remove dust, debris or stains.

IMPORTANT: Do not use petrol, paint thinner or other chemicals for cleaning.

4. To prepare the humidifier for storage, clean as directed above, then allow to dry fully in a well ventilated area for 24 hours before boxing the unit. It should be stored in a cool, dry location.

If you encounter a problem with the humidifier, please contact the retailer where the item was purchased for warranty information. Please do not attempt to repair the humidifier by yourself, as doing so will void the warranty and may result in property damage or personal injury.