

Shortstub®

Stick Electrode Holder

Issued July 2007 • SPEC SS-1.2

40B Shortstub®



Time Tested Performance.

Our Manual Welding Products provide high quality with a wide range of styles, sizes and capacities to enhance your welding applications.

Electrodes can be used to within one inch of the high heat, high impact head compared with the normal three inches of the electrode that is leftover when using a typical tong-type holder.

Bernard Shortstub greatly improves productivity because it is designed for quick, easy installation of electrodes and it is built to last with a proven high impact, high heat replaceable head.

Bernard Shortstub models provide long life because the replaceable head can be ordered separately and installed quickly, eliminating total replacement.

Over 2,000 pounds of gripping pressure enables the electrode to be bent to a desired shape for access to difficult welds.

Bernard's Shortstub® has maintained its time-tested design for decades.

Specifications					
Capacity	Electrode Size	Weight	Length	Cable Connection	Cable Socket
400 Amps at 60% duty cycle	1/16" - 1/4" (1.6 mm - 6.4 mm)	17oz (481 g)	8 3/4 (22 cm)	Model "B" large ball point screw connection	19/32" (1.5 cm)

Made with
Pride and without
Compromise in the **USA**

Bernard®

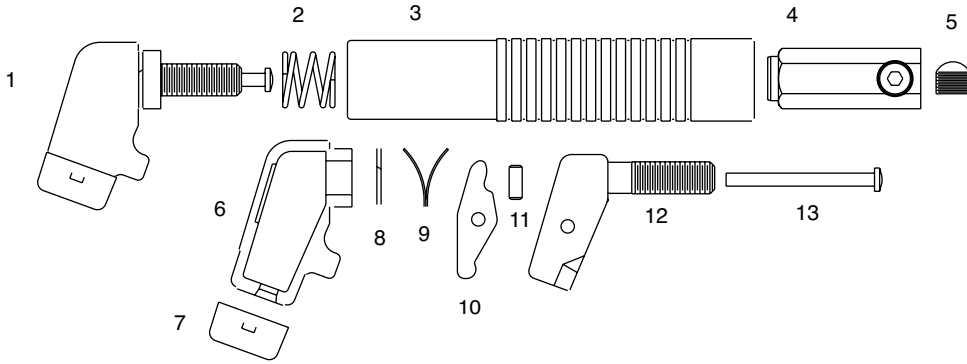
An Illinois Tool Works Company
449 West Corning Road, Box 667
Beecher, Illinois 60401 USA

Phone: 800-946-2281 (US Only) 708-946-2281 (Outside US)
Fax: 708-946-6726
For more information, visit us at BernardWelds.com



Replacement Parts List

40B Shortstub®



1. Head Assembly	K40	8. Snap Ring	SR4
2. Coil Spring	S5	9. V Jaw Spring	V4
3. Handle (molded)	MH4	10. Jaw	J4
4. Connector Body	B37	11. Jaw Pin	JP4
5. Ball Point Set Screw	B33	12. Head	H4
6. Head Insulator (Pair)	EL	13. Pressure Pin	PP4
7. Boot	BB4		