



## Service Campaign

**THE KING OF SNOW®**

Ariens Company  
655 W. Ryan St.  
Brillion, WI 54110  
www.ariens.com

**Product Family:** Ariens Compact Sno-Thro, Ariens Compact Track Sno-Thro, Sno-Tek,  
Ariens PB-28, Gravely PB- 28

**Subject:** Important Product Safety Recall

**Dealer Action:** STOP SALE – Repair Immediately

Ariens Company has identified a potential safety concern on models and serials listed in the table below. The auger drive pulley, #00268951, may develop a crack which could affect the brake's ability to stop the auger/impeller, resulting in an unsafe condition.

Dealers are instructed to Stop Sale Immediately of any unsold inventory which falls into the model and serial ranges listed. Additionally, dealers are asked to contact consumers who purchased affected machines from your dealership to coordinate repair of those machines as soon as possible. Ariens Company is sending a letter to registered owners of all affected machines alerting them to this situation.

Ariens Company has been reworking product since this issue was identified, and all machines which have been reworked by Ariens Company will have a black check mark on the carton label as well as the model/serial label on the machine.

Dealers are asked to order kit #52001800 and install it on each affected unit. The kit consists of a replacement pulley and hub assembly. Dealers should file a warranty claim for each pulley replacement using a flat rate code of 20999. Please make sure that the machine is within the model/serial numbers listed below. Warranty claims will be reimbursed for 0.50 at the dealer's standard shop labor rate.

Please direct any questions to Ariens Technical Service at:

**(888) 927 – 4367**

Model	Description	Serial Number Range
920013	Ariens ST22LE Compact Sno-Thro	124912 – 124935, 124937 – 125008, 125037 – 125060, 125094 – 125271
920014	Ariens ST24LE Compact Sno-Thro	142966 – 142999, 143264 – 143272, 143274 – 143281, 143284 – 143287, 143289, 143291 – 143304, 143306 – 143309, 143313 – 143432, 143434 – 143435, 143439 – 143445, 143448, 143450 – 143462, 143466 – 143467, 143469 – 143496, 143500, 143502 – 143506, 143511, 143513 – 143518, 143520 – 143535, 143700 – 143728
920021	Ariens ST22LE Compact Sno-Thro	3089 – 3100, 3510 – 3940, 3942 – 4360, 4363, 4365 – 4372, 4374 – 4377, 4382 – 4384, 4386, 4389 – 4398, 4400, 4404 – 4405, 4409, 4411 – 4415, 4418 – 4593, 4595 – 4617, 4619 – 4621, 4623 – 5815, 5817, 5819 – 5847, 5849 – 5883, 5885 – 5886, 5893 – 5895, 5899, 6000 – 6151, 6153 – 6172
920022	Ariens ST24LET Compact Track Sno – Thro	531 – 576, 701 – 712
920402	Sno-Tek 24E	143967 – 145036, 145062, 145095, 145097, 145500 – 145591, 145593 – 145594, 145596, 145598 – 145699, 146057
920403	Sno-Tek 28E	126501 – 127141, 127143 – 127145, 127185, 127197 – 127237, 127241 – 127291, 127293 – 127326, 127328 – 127338, 127340 – 127341
921025	Ariens PB-28 All-Season Brush	40600 – 40660
921026	Gravelly PB-28 All-Season Brush	40061 – 40079
921313	Ariens 28" Brush – CE	40163 – 40174
939401	Sno-Tek 20E	90112, 90140 – 90619, 90621 – 90623

## ATTACHMENT DRIVE BELT PULLEY REPLACEMENT – SNO-THRO & SNO-TEK MODELS

Models 920013, 920014, 920021, 920022, 920402, 920403, 939401

### Remove Attachment Drive Belt

(Figures 1, 2 and 3)

1. Shut off engine, remove key, disconnect spark plug wire and allow unit to cool completely.
2. Loosen the hardware securing belt cover to unit.

**NOTE:** DO NOT completely remove the hardware from unit.

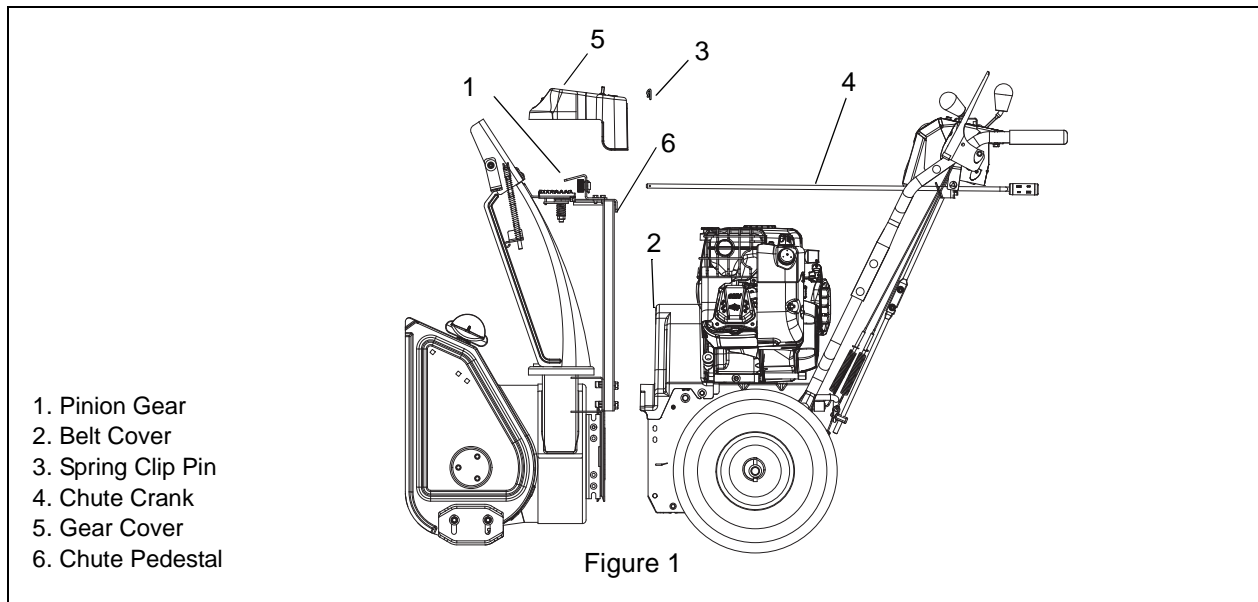
3. Remove belt cover.
4. Remove gear cover from top of chute pedestal.
5. Remove spring clip pin from chute crank and separate.
6. Remove remote deflector control cable from control lever if equipped).
7. Remove belt finger by removing cap screws mounting belt finger to engine (Figure 2).
8. Remove attachment drive belt from engine sheave (it may be necessary to turn engine sheave using recoil starter handle).



**CAUTION:** Always support Sno-Thro frame and housing when loosening the cap screws holding them together. Never loosen cap screws while unit is in service position.

**IMPORTANT:** To avoid bending bottom cover when tipping unit apart, support handlebars firmly or tip unit up on housing and remove bottom cover by removing six cap screws before separating unit.

9. Support Sno-Thro frame and housing.
10. Remove hex bolts securing housing to frame (two on each side). Tip housing and frame apart on pivot pin.
11. Separate housing from unit.
12. Remove attachment drive belt from attachment pulley.
13. Remove attachment pulley and discard. DO NOT reuse pulley.
14. Replace attachment pulley with kit #52001800. Torque to 120 lbs-in.



#### Replace Attachment Drive Belt

1. Place new belt onto attachment pulley (Figure 2).

**NOTE:** Engage attachment clutch lever while connecting housing to frame to hold brake out of the way.

2. Tip housing and frame back together and secure with hex bolts.
3. Place belt onto engine sheave.
4. Replace belt finger.

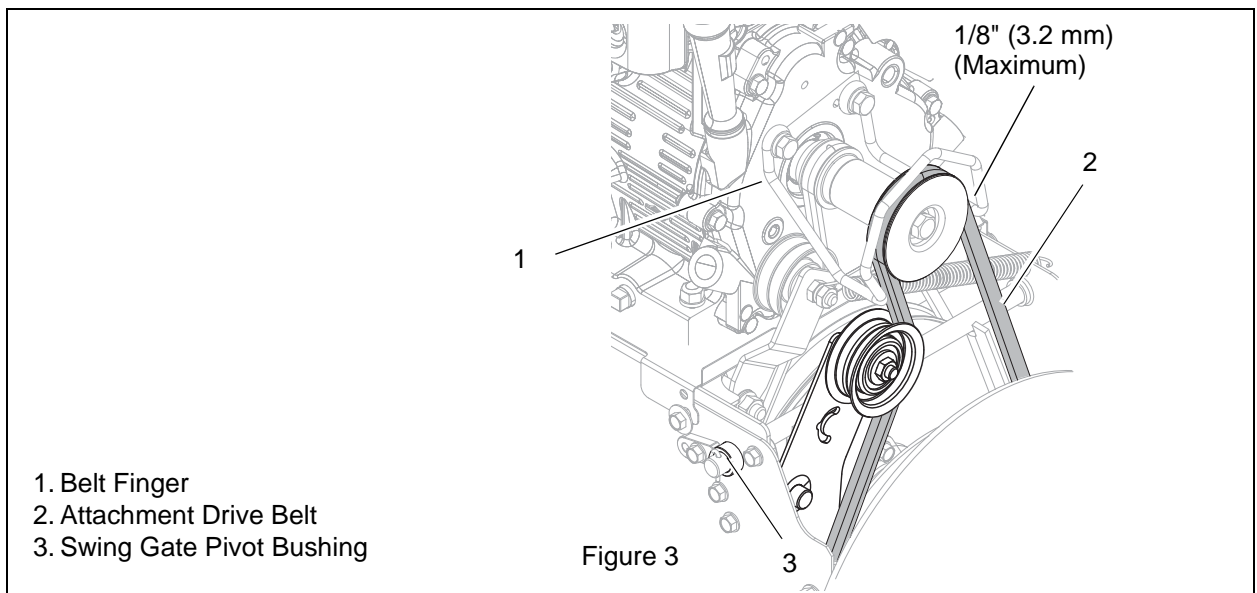
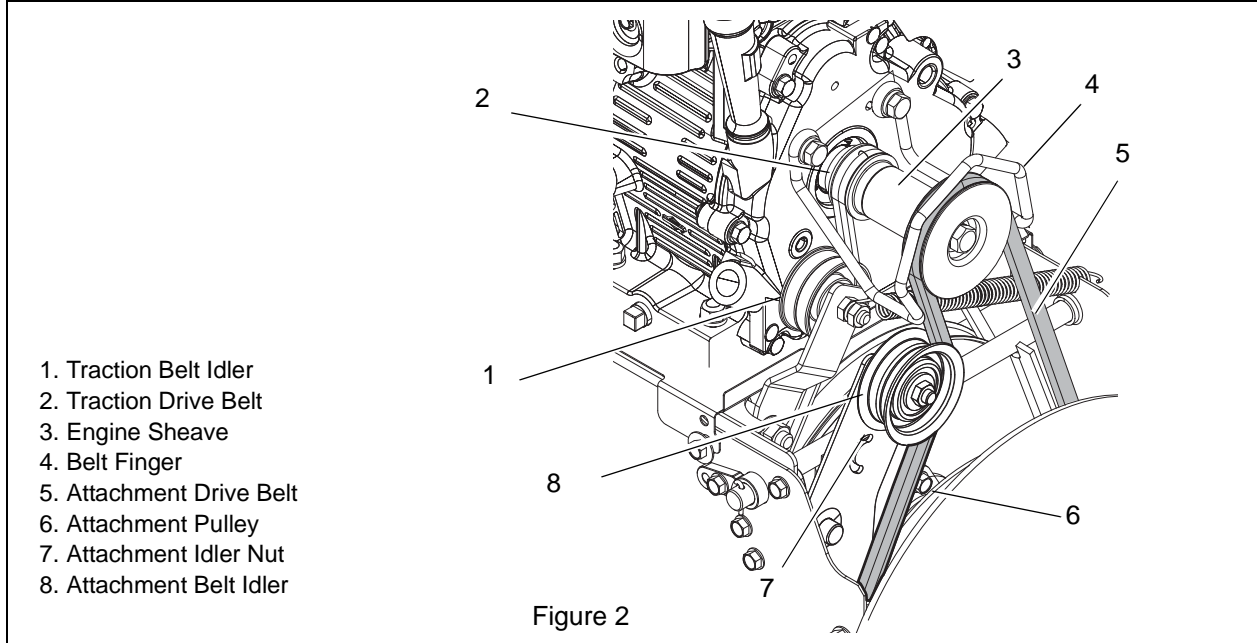
**IMPORTANT:** With the attachment clutch lever engaged, the belt finger located opposite the belt idler must be less than 1/8" (3.2 mm) from the belt, but not touching the belt, or belt grabbing may occur causing impeller to rotate while the attachment clutch is disengaged (Figure 3).

5. Adjust clutch (see Attachment Clutch/Brake Adjustment on page 5).



**WARNING:** AVOID INJURY. Auger must stop within 5 seconds when attachment lever is released or serious injury or unit damage may result.

6. Replace chute crank and secure with spring clip pin.
- If Equipped: Reconnect remote deflector cable to control lever.
7. Replace gear cover on top of chute pedestal.
8. Run in the attachment belt(see Run-in Attachment Belt on page 4).
9. Replace belt cover and tighten hardware.



### RUN-IN ATTACHMENT BELT

1. Start unit in a well-ventilated area.
2. Engage attachment clutch lever and run attachment for about 15 minutes.
3. Stop unit, wait for all moving parts to stop, and remove spark plug wire.
4. Adjust clutch idler (see Attachment Clutch/Brake Adjustment on page 5).

## ATTACHMENT CLUTCH/BRAKE ADJUSTMENT



**WARNING:** IMPROPER ADJUSTMENT could result in unexpected movement of auger and impeller causing death or serious injury. AUGER / IMPELLER MUST STOP within 5 seconds when Attachment Clutch Lever is released.

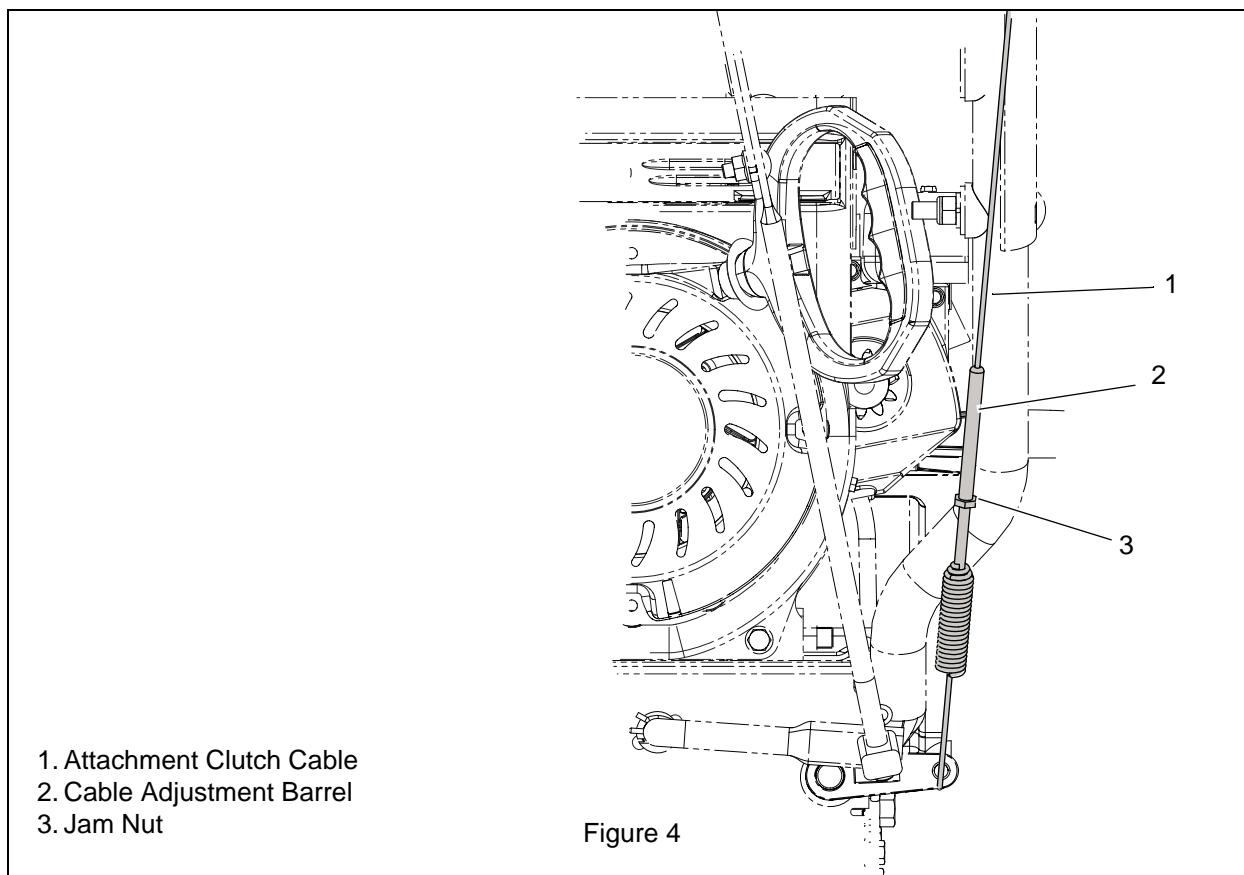


**WARNING:** Adjustment procedure requires the engine to be run with the belt cover off. AVOID INJURY. Read and understand the entire *Safety* section before proceeding.

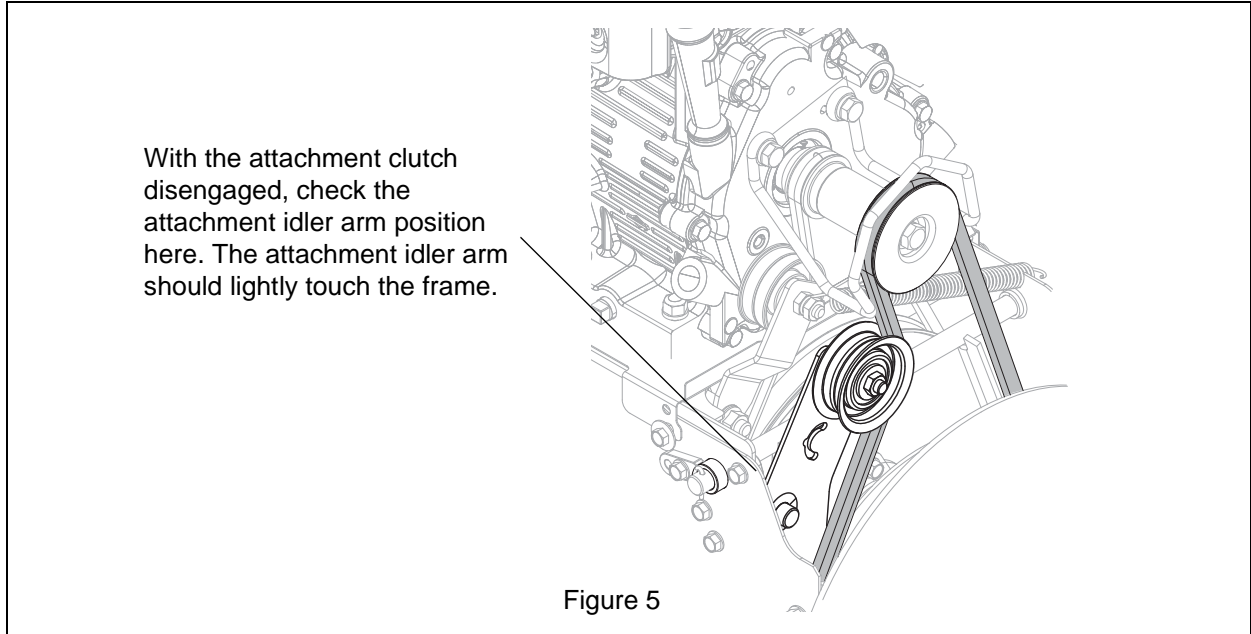
### Remove Attachment Cable Slack

(Figures 4 and 5)

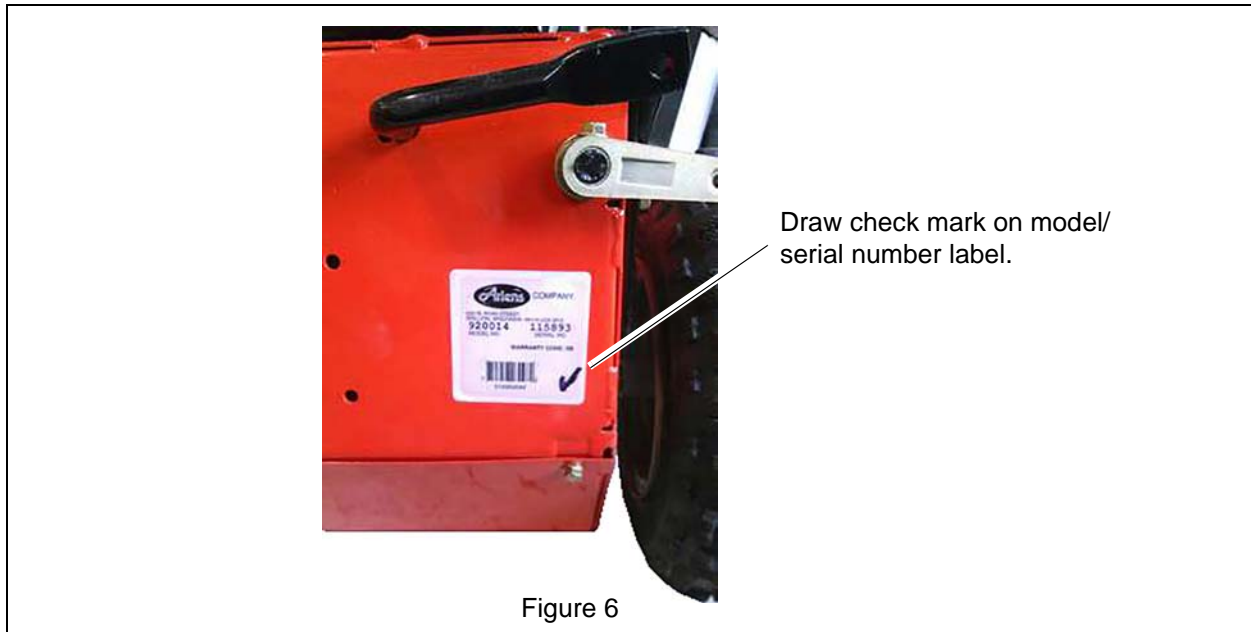
1. Shut off engine, remove key, disconnect spark plug wire and allow unit to cool completely.
2. Loosen hardware securing belt cover to unit.
3. DO NOT completely remove the hardware from unit.
4. Remove belt cover.
5. Loosen jam nut on cable adjustment barrel, and then turn the adjustment barrel down to shorten cable and remove all cable slack (Figure 4).



6. With the attachment clutch disengaged, check that the attachment idler arm lightly touches the frame (Figure 5).
7. Tighten jam nut on cable adjustment barrel.



8. Draw a check mark on the model/serial number label with an indelible black marking pen to signify that the repair has been completed (Figure 6).



## ATTACHMENT DRIVE BELT PULLEY REPLACEMENT – POWER BRUSHES

Models 921025, 921026, 921313

### Remove Attachment Drive Belt

(Figures 7 and 8)

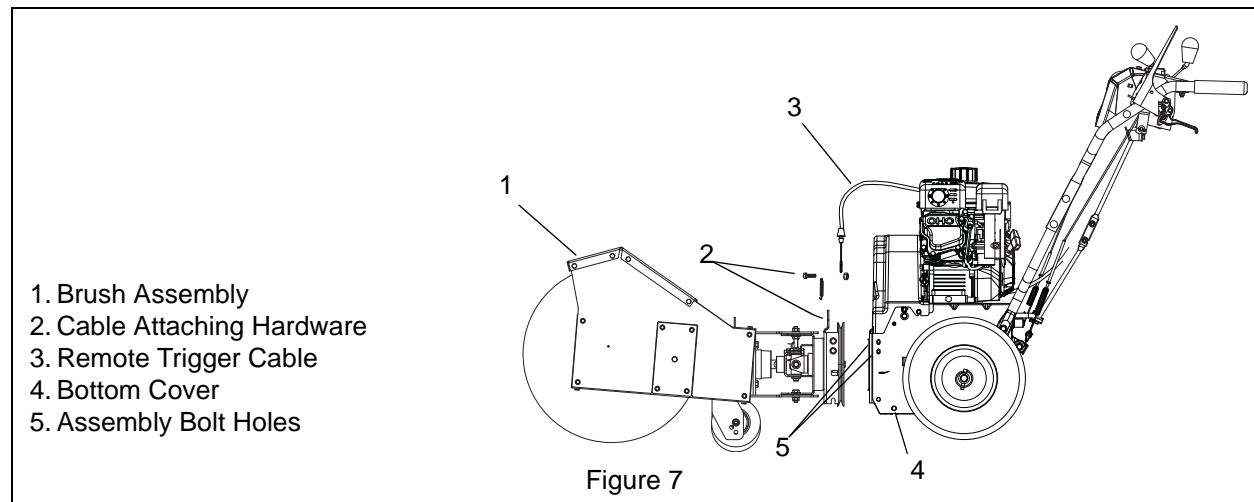
1. Shut off engine, disconnect spark plug wire and allow unit to cool completely.
2. Remove the hardware attaching the remote trigger cable to the brush assembly.
3. Remove two screws securing belt cover to unit and remove belt cover.
4. Remove belt finger by removing cap screws mounting belt finger to engine (Figure 8).
5. Remove attachment drive belt from engine sheave (it may be necessary to turn engine sheave using recoil starter handle).



**WARNING:** Always support Sno-Brush frame and brush assembly when loosening the cap screws holding them together.

**IMPORTANT:** To avoid bending bottom cover, when tipping unit apart, support handlebars firmly and remove bottom cover by removing six cap screws before separating unit.

6. Support frame and brush assembly.
7. Remove cap screws holding brush assembly to frame (two on each side).
8. Separate assembly from unit. Lower handlebar on floor.
9. Remove attachment drive belt from lower pulley (hold brake away from belt).
10. Remove attachment pulley and discard. DO NOT reuse pulley.
11. Replace attachment pulley with kit #52001800. Torque to 120 lbs-in.



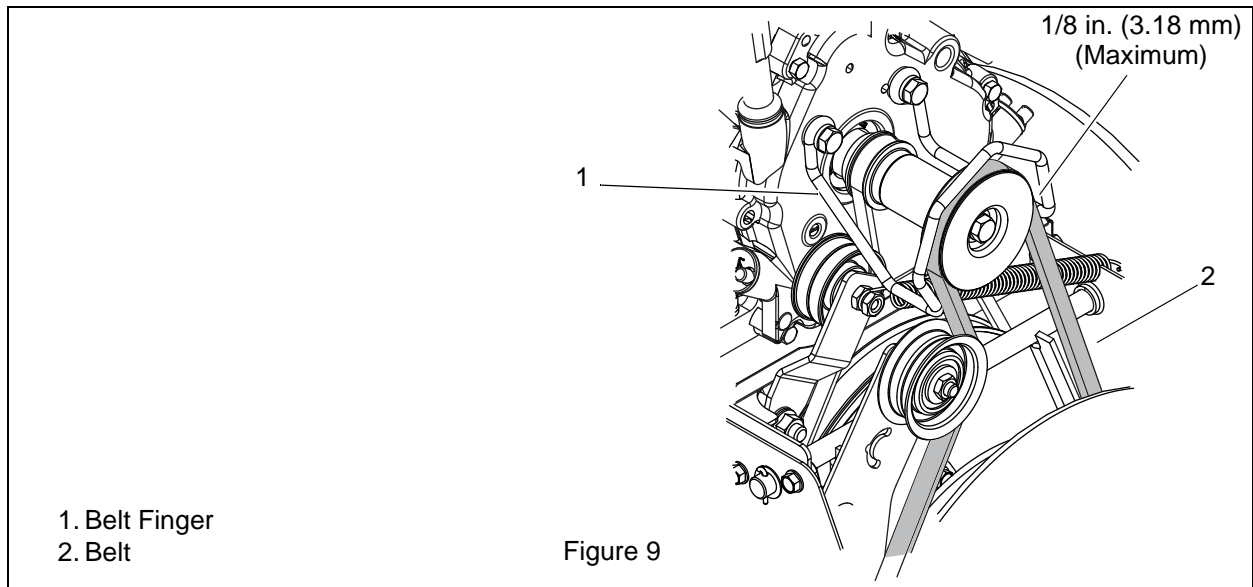
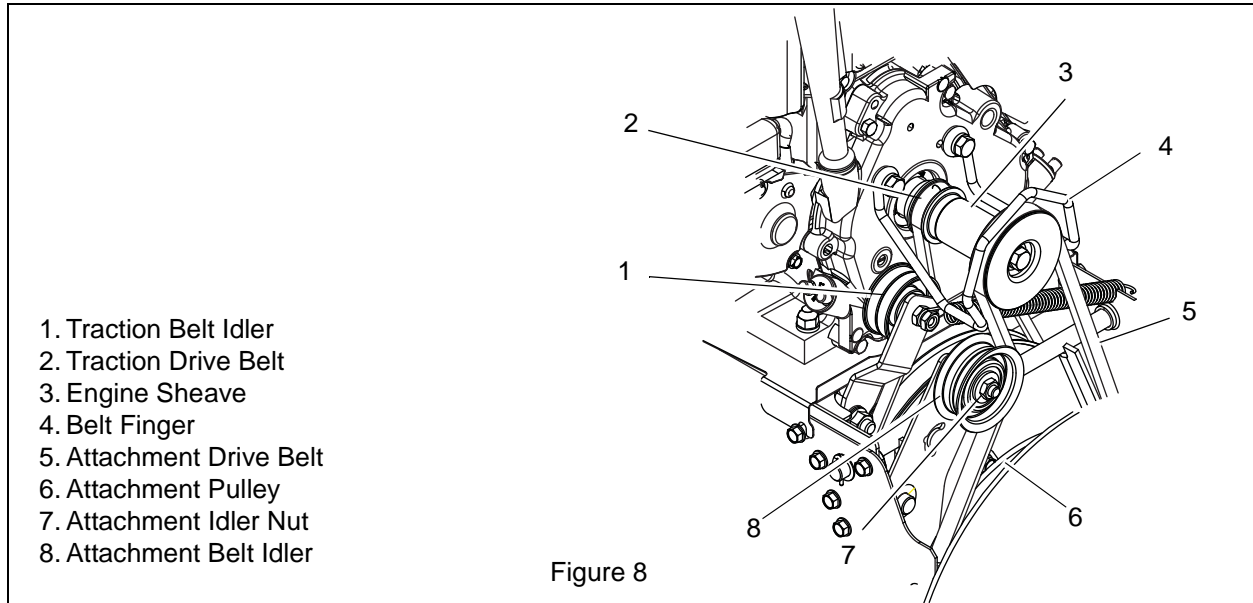
### Replace Attachment Drive Belt

(Figures 8 and 9)

1. Place new belt onto lower pulley and while holding brake out of way, tip unit together.
2. Secure brush to frame with cap screws.
3. Place belt onto engine sheave.
4. Replace belt finger.

**IMPORTANT:** With the clutch lever engaged, the belt finger located opposite the belt idler must be less than 1/8 in. (3.2 mm) from the belt, but not touching the belt, or belt grabbing may occur causing brush to rotate while the attachment clutch is disengaged (Figure 9).

5. Adjust clutch (see Attachment Clutch/Brake Adjustment on page 5).
6. Replace belt cover and secure with cap screws.
7. Replace bottom cover and secure with cap screws.
8. Reinstall remote trigger cable to brush assembly.
9. Run in the attachment belt (see Run-in Attachment Belt on page 4).
10. Replace the belt cover.



11. Draw a check mark on the model/serial number label with an indelible black marking pen to signify that the repair has been completed. See Figure 6.