



PARTS LIST

BACKPACK BLOWER

EBZ3000RH

NOTE :

1. Use ZENOAH genuine parts specified in the parts list for repair and/or replacement.
2. ZENOAH does not warrant the machines, those which have been damaged by the use of any parts other than those specified by the company.
3. When placing orders of parts for repair and/or replacement, check if the model name and the serial number are suitable to those specified in the parts list, then use parts number described in the parts list.
4. The contents described in the parts list may change due to improvement.
5. The parts for the machine shall be supplied within ten (10) years after the machine is discontinued.
[It is possible that some specific parts may be subject to change of their delivery term and list price within the limit of ten (10) years after the machine is discontinued. And it is also possible that some parts may be available even after the limit of ten (10) years.]

Fig.1 BLOWER GROUP

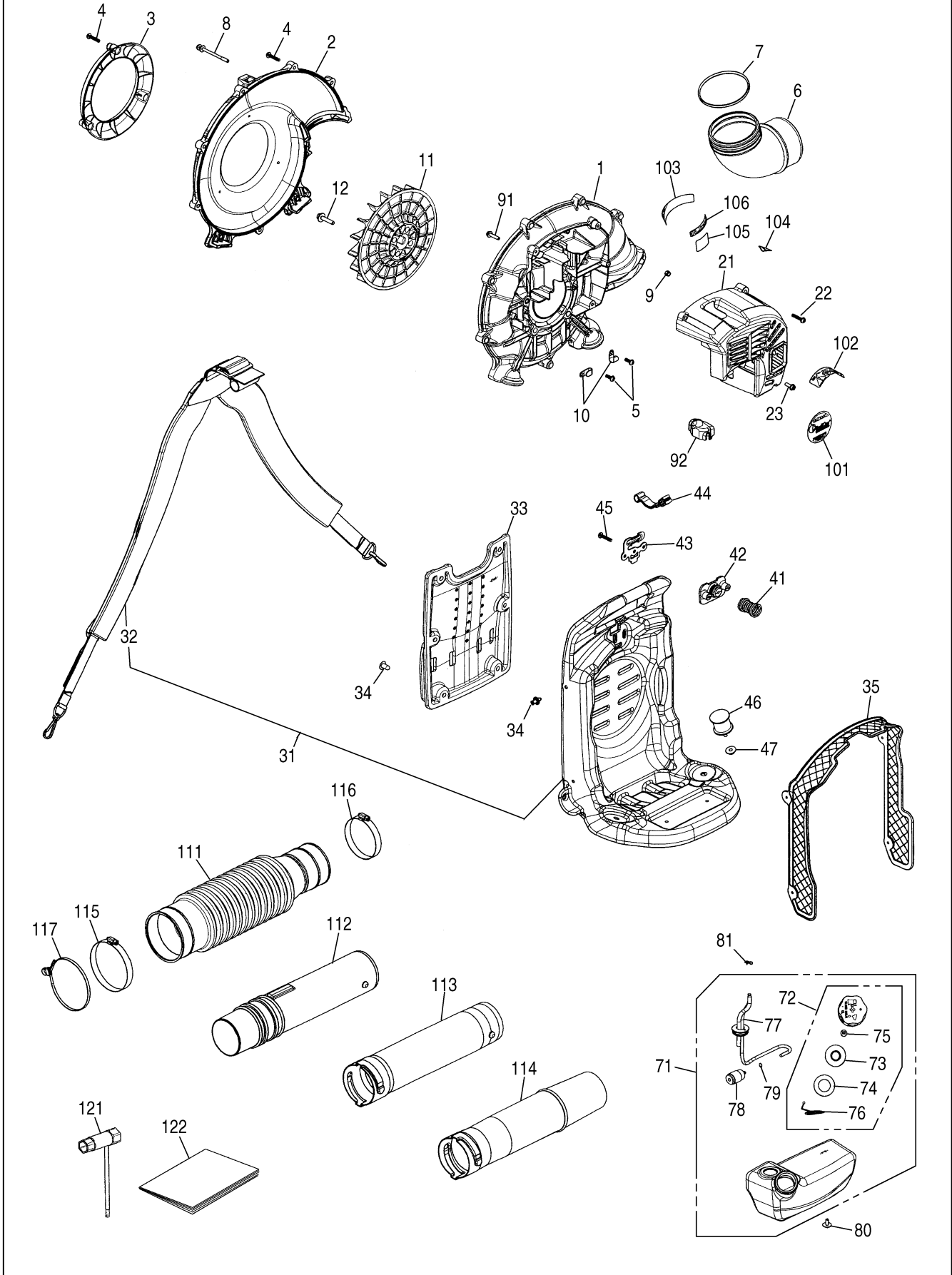


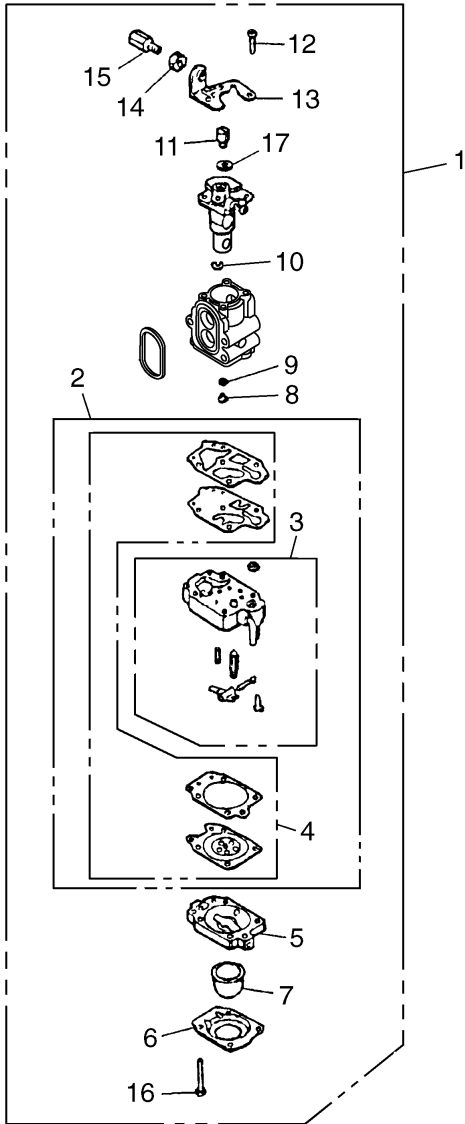
Fig.1 BLOWER GROUP

Key#	PART NUMBER	DESCRIPTION	Q'TY /UNIT	NOTE	Key#	PART NUMBER	DESCRIPTION	Q'TY /UNIT	NOTE
1	848L2155A0	VOLUTE CASE	1		111	T4017-51110	HOSE	1	
2	848L2155B0	COVER VOLUTE	1		112	2750-51201	SWIVEL JOINT	1	
3	848L2055K0	FUNNEL	1		113	6811-51211	PIPE, STRAIGHT	1	
4	T4970-52510	SCREW	11		114	848L0L65E0	PIPE, END	1	
5	T4970-51410	SCREW	2		115	8488K40020	CLAMP	1	
6	848L2055C0	ELBOW	1		116	8488K40060	CLAMP	1	
7	07000-12085	O-RING	1		117	8488K50000	BAND	1	
8	T4960-57030	SCREW	2						
9	3310-53331	NUT	2		121	8488U10020	SOCKET	1	
10	8488K40010	CLAMP	2		122	848L2693A0	MANUAL, EBZ3000	1	
11	848L2052A0	BODY, FAN	1						
12	T4950-63031	BOLT	4						
21	848L2131A1	COVER, ENGINE	1						
22	T4970-52510	SCREW	3						
23	4820-32120	BOLT	1						
31	848L213500	FRAME ASSY	1						
32	848L213610	BAND ASSY	1						
33	848L2135C0	PAD	1						
34	3495-21320	CLIP	10						
35	848L2035D1	NET	1						
41	848L2037E0	SPRING	1						
42	848L2037H0	HOLDER, SPRING	1						
43	848L2037J1	PLATE	1						
44	848L2037G1	STOPPER	1						
45	T4970-52510	SCREW	3						
46	2750-32610	DAMPER	2						
47	2750-32620	NUT	2						
71	848L218510	TANK ASSY	1						
72	848L238510	• CAP ASSY	1						
73	4500-85300	•• HOLDER ASSY	1						
74	4500-85220	•• PACKING	1						
75	5601-85260	•• FILTER	1						
76	848L2385N0	•• STOPPER	1						
77	848L208530	• PIPE COMP.	1						
78	3302-85400	• FILTER	1						
79	1260-85460	• CLIP	1						
80	T4960-51231	SCREW	2						
81	1950-86120	CLIP	1						
91	4820-12130	BOLT	4						
92	4500-81910	COVER	1						
101	848L2690C0	LABEL, RECOIL	1						
102	2750-31911	LABEL, CAUTION	1						
103	T4012-32610	LABEL, NET	1						
104	848C1B90G0	LABEL, HOTMARK	1						
105	T2990-21000	LABEL	1						
106	8488X30000	LABEL	1						

Fig.2 ENGINE GROUP

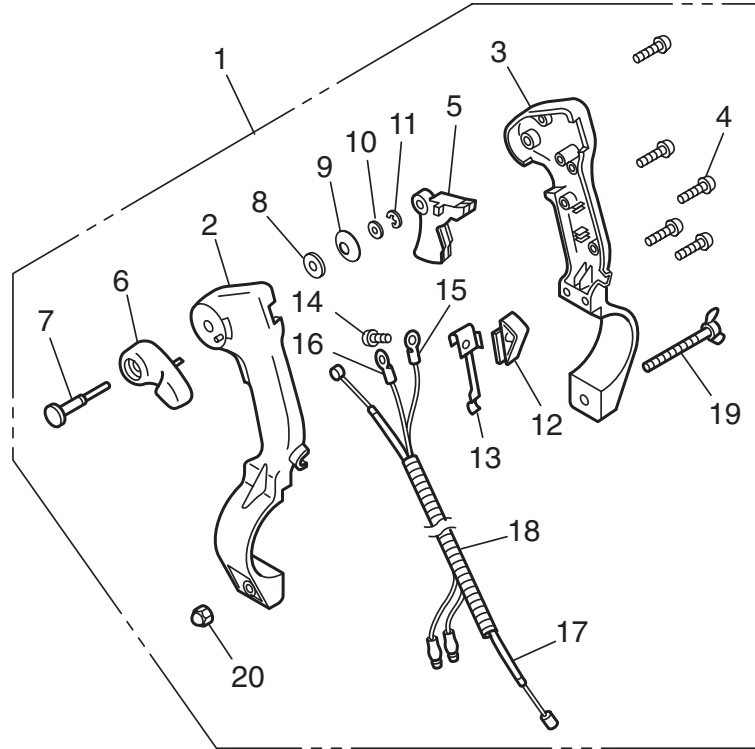
Key#	PART NUMBER	DESCRIPTION	Q'TY /UNIT	NOTE	Key#	PART NUMBER	DESCRIPTION	Q'TY /UNIT	NOTE
1	848F6B1210	CYLINDER COMP.	1		91	848F6B21G1	COVER	1	
		• CYLINDER	1		92	4820-12350	BOLT	2	
3	848F6B12C0	• COVER, TR(S)	1						
4	848F6B12D0	• COVER, TR(F)	1		101	8488M10630	CORD COMP.	1	
5	848F6B12E0	• GASKET, TR	2		102	T1108-73110	SPARKPLUG, CMR7H	1	
6	8488141000	• BOLT TORX	4		103	4810-72120	GROMMET	1	
7	T1590-12210	GASKET BASE	1						
8	4820-12130	BOLT	4		111	848F687510	RECOIL ASSY	1	
9	848F6014A1	INSULATOR	1		112	848F6875C0	• REEL	1	
10	848F6L14B0	GASKET, INSU	1		113	848F6875L0	• PLATE, CAM	1	
11	848F6L14C0	GASKET	1		114	848F6875K0	• SPRING, DAMPER	1	
12	4820-13180	BOLT	4		115	848F6875B0	• SPRING, SPIRAL	1	
					116	4500-75150	• SCREW	1	
21	848F6B2110	CRANKCASE COMP.	1		117	848F6875F0	• ROPE	1	
22	2629-21130	• PIN	3		118	3330-75421	• KNOB	1	
23	848F6021D1	GASKET, CASE	1		119	848F687520	PULLEY ASSY	1	
24	84889C3200	BEARING	2		120	848F6875R0	• RATCHET	2	
25	4810-21210	SEAL	1		121	848F6875S0	• SPRING	2	
26	8488AC3210	SEAL	1		122	1034-72180	• E-RING	2	
27	04065-03212	RING	2		123	4820-32120	BOLT	4	
28	4820-13180	BOLT	3						
					131	848F028332	BODY & SCREEN	1	
31	848F6B41A2	PISTON	1		132	848F028311	• BODY ASSY	1	
32	T1590-41210	RING	2		133	T1512-82130	•• PLATE, CHOKE	1	
33	T2200-41310	PIN	1		134	T1600-82140	•• LEVER	1	
34	3310-41320	RING	2		135	T1108-82190	•• SCREW	1	
35	3310-41410	BEARING	1		136	T1513-82120	•• PACKING	1	
36	1650-41510	WASHER	2		137	848F0283K2	• SCREEN	1	
37	848F6B4200	CRANKSHAFT COMP.	1		138	T1108-82190	• SCREW	1	
38	1650-43230	NUT	1		139	T1513-82170	ELEMENT	1	
39	1000-43240	KEY	1		140	848F6E8320	COVER ASSY	1	
					141	5500-82221	• KNOB	1	
41	848F6B71A0	ROTOR	1						
42	848F6B7120	COIL ASSY	1		151	8488X60000	LABEL, CHOKE	1	
43	848F6B71D0	• CORD	1						
44	2616-71320	• CAP	1						
45	848F0871G0	• SPRING	1						
46	T2070-72210	• CAP	1						
47	1260-71261	SPACER	2						
48	4820-72150	BOLT	2						
51	848F6B8101	CARBURETOR ASSY	1						
68	4820-15310	BOLT	2						
81	848F6B1510	MUFFLER	1						
82	848F6B15B2	• ARRESTER	1						
83	848F6B15U2	• EJECTOR	1						
84	T4950-40800	• BOLT TORX	2						
85	8488156200	BOLT	2						
86	848F6B15C0	GASKET	1						

Fig.3 CARBURETOR COMPONENTS



Key#	PART NUMBER	DESCRIPTION	Q'TY /UNIT	NOTE
1	848F6B8101	CARBURETOR ASSY	1	
2	848F600630	• REBUILD KIT	1	
3	1850-81450	•• BODY ASSY	1	
4	4810-06021	•• GASKET KIT	1	
5	1850-81490	• BODY	1	
6	1850-81520	• COVER	1	
7	1751-81510	• PUMP	1	
8	8488J13400	• JET	1	
9	1751-81240	• O-RING	1	
10	1751-81130	• RING	1	
11	1881-81140	• SWIVEL	1	
12	1752-81110	• SCREW	2	
13	5500-81120	• BRACKET	1	
14	1751-81180	• NUT	1	
15	1918-81170	• SCREW	1	
16	1850-81530	• SCREW	4	
17	5500-81160	• WASHER	1	

Fig.4 LEVER (R) SET



Key#	PART NUMBER	DESCRIPTION	Q'TY /UNIT	NOTE	Key#	PART NUMBER	DESCRIPTION	Q'TY /UNIT	NOTE
1	848L213410	LEVER SET	1		19	3495-51420	• WING BOLT	1	
2	848L5434A1	• CASE	1		20	2750-51540	• NUT	1	
3	T4023-25210	• COVER	1						
4	T4023-25310	• SCREW, 4x14	5						
5	T4023-25410	• LEVER, THROTTLE	1						
6	848L5434D1	• LEVER	1						
7	T4023-25440	• SHAFT	1						
8	T4023-25450	• WASHER	1						
9	T4023-25460	• SPRING	1						
10	3238-15230	• WASHER	1						
11	T4023-25480	• CLIP	1						
12	T4023-25710	• SWITCH	1						
13	T4023-25721	• SPRING	1						
14	T4023-25730	• SCREW, 4x10	1						
15	8488M10610	• CORD COMP. (BLACK)	1						
16	8488M10620	• CORD COMP. (RED)	1						
17	8488P00410	• CABLE COMP.	1						
18	8488H18700	• TUBE	1						