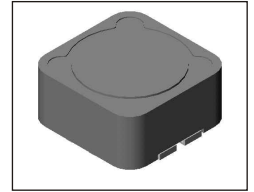


SMT Power Inductor

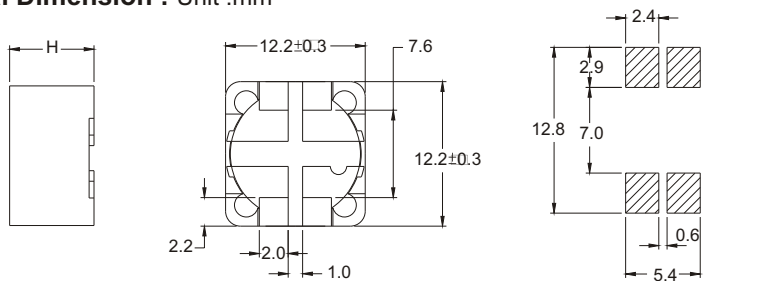
STQ124R, STQ125R, STQ127R Type

Features

Low profile, SMD type.
Magnetically shielded, suitable for high density mounting.
High energy storage and low DCR.
Provided with embossed carrier tape packing.
Two windings, ideal for notebook power source circuits, DC-DC converters applications.
In addition to the standard versions shown here, custom inductors are available to meet your exact requirements.



Mechanical Dimension : Unit :mm



Electrical Characteristics :

PART NO.	L (uH)*		DCR (mΩ) MAX		TURN RATIO (L1 : L2)	I _{RATED} ** (Adc)	DIMENSION "H" mm (MAX)
	L1	L2	L1	L2			
STQ124R -5622	5.6	24.5	25	450	1 : 2.2	5.2	4.5
STQ124R -6822	6.8	28	33	470	1 : 2.2	4.7	4.5
STQ124R -8222	8.2	35	33	580	1 : 2.2	4.3	4.5
STQ124R -1022	10	45	36	590	1 : 2.2	4.0	4.5
STQ124R -1024	10	47	39	600	1 : 2.4	4.0	4.5
STQ124RA -6320	6.3	26.5	33	510	1 : 2.0	5.5	4.5
STQ124RA -8222	8.2	35	33	580	1 : 2.2	5.0	4.5
STQ1250R -4722	4.7	22.2	25	340	1 : 2.2	7.0	4.5
STQ1250R -1022	10	45	30	420	1 : 2.2	7.0	4.5
STQ125R -5622	5.6	26.5	20	220	1 : 2.2	5.3	6.0
STQ125R -6822	6.8	32	21	250	1 : 2.2	5.0	6.0
STQ125R -8220	8.2	32	22	260	1 : 2.0	4.7	6.0
STQ125R -8222	8.2	35	22	270	1 : 2.2	4.7	6.0
STQ125R -1014	10	21	27	182	1 : 1.4	4.3	6.0
STQ125R -1016	10	25	27	220	1 : 1.6	4.3	6.0
STQ125R -1022	10	45	27	300	1 : 2.2	4.3	6.0
STQ125R -1220	10	45	30	300	1 : 2.0	4.0	6.0
STQ125RA -5022	5.0	23.5	17	260	1 : 2.2	7.0	6.0
STQ125RA -8222	8.2	28	22	250	1 : 2.2	5.0	6.0
STQ125RA -1018	10	31.8	27	232	1 : 1.8	7.0	6.0
STQ125RA -7322	7.3	36.5	25	340	1 : 2.2	7.0	6.0
STQ127R -7622	7.6	38	22	300	1 : 2.2	7.0	8.0
STQ127R -1022	10	45	30	200	1 : 2.2	4.5	8.0
STQ127R -1042	10	178	30	660	1 : 4.2	4.5	8.0
STQ127RA -4722	4.7	15.2	11	220	1 : 2.2	10	8.0
STQ127RA -1022	10	45	30	200	1 : 2.2	7	8.0

*Tolerance of inductance : ±30%

**I_{RATED} : rated current ΔL<25% , ΔT<45°C at I_{RATED}.

***Operating temperature : -20°C to 105°C (including self-temperature rise)

****Test condition at 25°C : 1KHz, 1V



DELTA ELECTRONICS, INC.

(TAOYUAN PLANT CPBG) 252, SAN YING ROAD, KUEISAN INDUSTRIAL ZONE, TAOYUAN SHIEN, 333, TAIWAN, R.O.C.

TEL: 886-3-3591968; FAX: 886-3-3591991

http://www.deltaww.com