

# SPYKER

THE SPREADER PEOPLE

*spread with confidence*

Model: 75

Spreading Chart  
Operation Guide  
Service Manual  
Parts List



*It's the spread that counts*

P.O. Box 7  
140 Mill Street  
Urbana, IN  
46990 USA



1-800-972-6130  
Fax: 260-774-3416

Item #	Part #	Quantity	Description
1	05-75-751 0	1	Hopper
2	05-75-751 6	1	Strap Assembly
3	05-75-7544	1	Crank Assembly
4	05-75-7526	1	Sleeve
5	05-75-201 5	1	O-Ring
6	05-75-7551	1	Connector
7	05-75-8063	2	Fastex Nut (Bush, RTNR)
8	05-75-7588	2	Bushing (Impeller Shaft)
9	05-75-7507	1	Main Shaft & Gear Assembly
10	05-75-7502	1	Impeller Shaft & Gear Assembly
11	05-75-7552	1	Impeller Shaft Bracket
12	05-75-7548	1	Bushing (Impeller Shaft)
13	05-75-7566	2	Tinnerman Nut
14	05-75-7553	1	Cam
15	05-75-7561	1	50+ Bevel Gear
16	05-75-7525	1	Stub Shaft
17	05-75-7545-B	1	Mounting Bracket (Main Shaft)
18	05-75-7554	1	Base
19	05-75-7546	1	Shutter Bar
20	05-75-7558	1	Pattern Door Guide
21	05-75-7563-A	1	Spring (Shutter Bar)
22	05-75-7563-B	1	Clip (Shutter Bar Spring)
23	05-75-7547	1	Shutter
24	05-75-7570	1	Bracket (Shutter)
25	05-75-7569	1	Shield (Shutter Bar)
26	05-75-7562	1	Spinner
27	SS-91 -0004	1	1 / 4-20 Nylock Nut
28	05-75-7555	1	Shield (Bottom)
29	05-75-7577	1	Spring (Latch)
30	05-75-7575	1	Bolt (Latch 6-32 x1 / 2 Carriage)
31	05-75-751 9	1	Latch Stop
32	05-75-7529	1	Wing Nut (6-32)
33	05-75-7534	1	Latch Lever
34	05-75-7564	1	Side Shield
35	05-75-7559	1	Pattern Door
36	05-75-7501	1	Base & Gear Assembly
37	05-75-7590	2	Screws (3/ 8 x 6)

## Cleaning the Spreader is Part of the Spreading Job

IMMEDIATELY AFTER USE - CLEAN AND OIL THE SPREADER

- Method #1 - Wipe spreader thoroughly with an oily cloth. Oil all bearings and bearing areas.
- Method #2 - Wash, rinse, and dry the spreader. Note: Drying takes time. (Moisture trapped in bearing areas is slow to go.) Immediately after drying - oil all bearings and moving parts. Make certain all operations are thorough.

Note: Good "Dry Cleaning" is preferable to poor "Wet Cleaning".

- It is virtually impossible to have rust and corrosion on a clean, dry oiled surface.
- Again - just before using - oil all bearings and moving parts.
- In storage, ideally the spreader should be hung by the handle. In any case, do not pile weight on the spreader, as excess weight over a period of time can distort the tires.

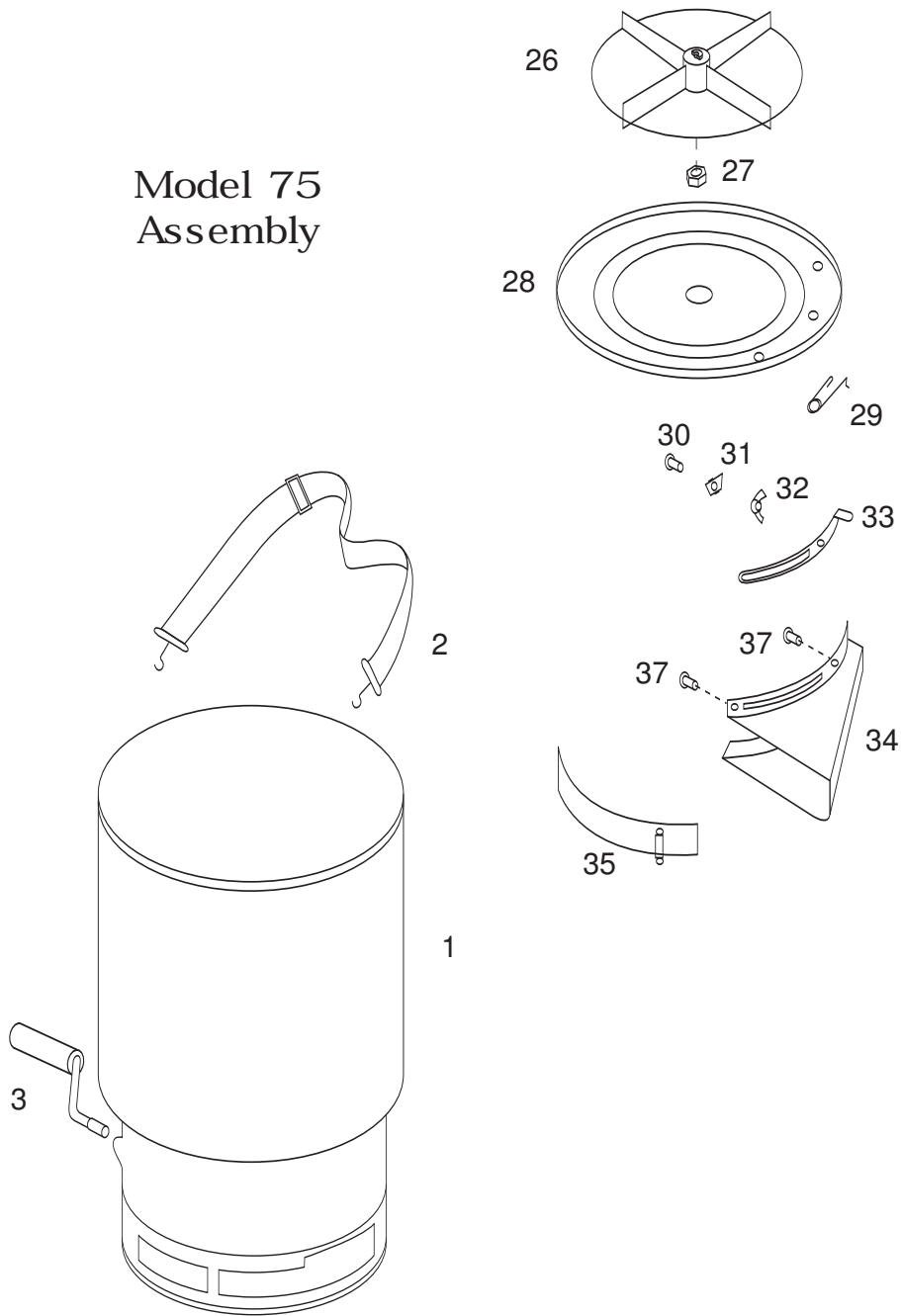
"To Every Action There Is Always An Opposed and Equal Reaction"  
(Newton's law of motion - Sir Isaac Newton, 1642-1727.)

NOTE: With the rotary agitator installed, the rate gate closed (not spreading) and with material in the hopper, the spreader will push harder than normal (This is because the agitator is stirring the material and it has no place to go.)

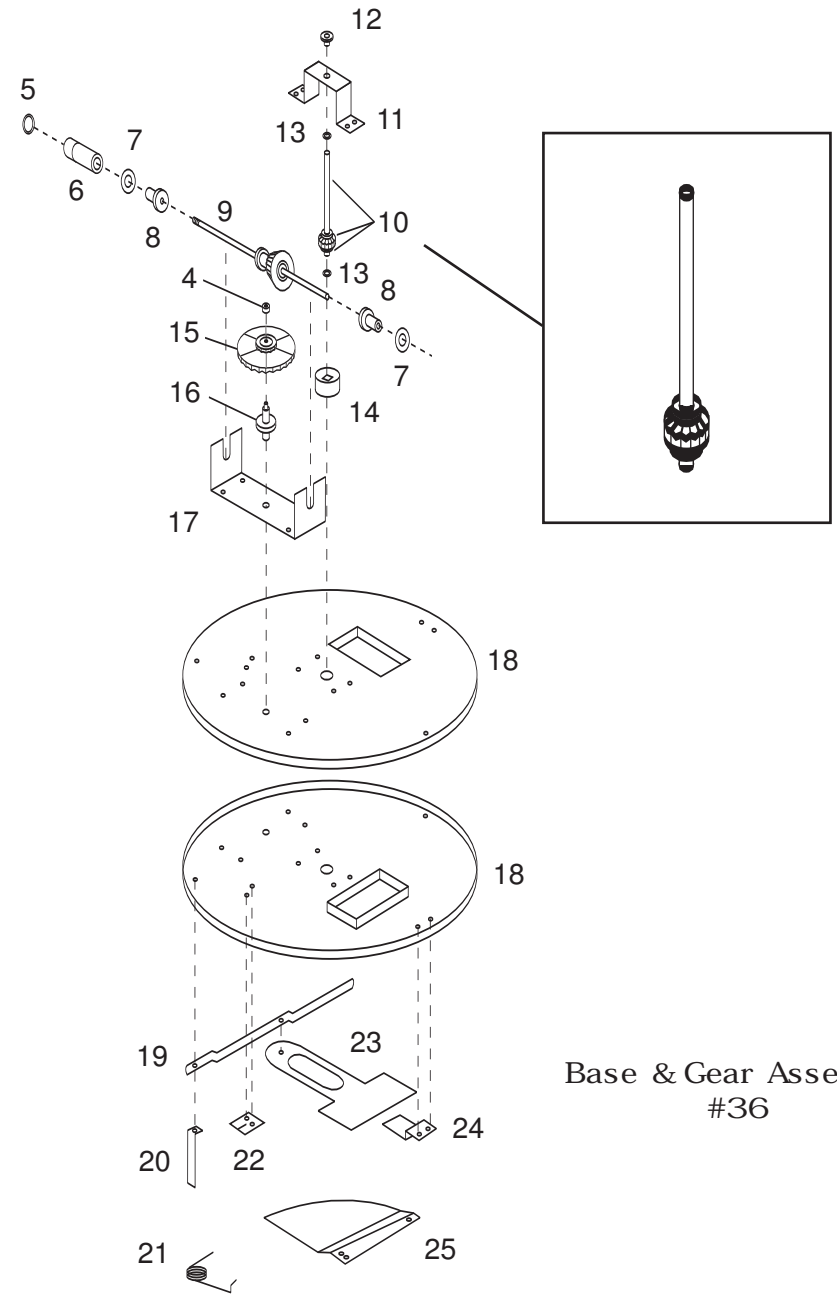
**RECOMMENDATION:** When not spreading and the spreader is being pushed some distance, tip the spreader so only the idle wheel is on the ground.

*Exploded View*

Model 75  
Assembly



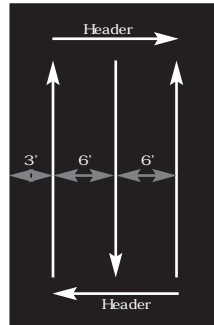
*Exploded View*



Base & Gear Assembly  
#36

## Now You are Ready to Spread

- Spread header strips at the ends of the area **OPPOSITE** the direction of spreading. This will provide a “turn-around” area, an area to re-align the spreader for the return spread.
- Example is for 6 ft. wide spread: Make the first spreading pass at one-half the spread width from the edge of the spreading area or in this case approximately 3 feet or one big step.
- Additional spreading passes will be at the full spread width or approximately 6 feet apart.
- **TAKE A SIGHTING AT THE FAR END.** Keep your eye on the sighting as you spread. You will not need to wonder where you are or where you have been. Continue until spreading is completed.
- Left over fertilizer can be spread under trees and other high feeding areas without showing “edge of spread” lines.



NOTE: With the rotary agitator installed, the rate gate closed (not spreading) and with material in the hopper, the spreader will push harder than normal (This is because the agitator is stirring the material and it has no place to go.)

RECOMMENDATION: When not spreading and the spreader is being pushed some distance, tip the spreader so only the idle wheel is on the ground.

## Operating Instructions

### How to Use the Spreader

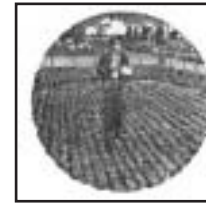
1. Set swath adjustment to calibrated setting.
2. Set spread rate adjustment nut to calibrated rate.
3. Close hopper and fill with material
4. Go to place where you wish to begin spreading.
5. Turn delivery crank to start spinner
6. Pull flow lever forward to start flow of material and begin walking.  
The lever will lock automatically in preset delivery rate position.
7. To stop material flow, push down on the hopper release lever.

### How to Clean the Spreader

1. After use, empty the hopper and give the crank a few turns for further cleaning.
2. Rinse with hose and water.
2. Dry thoroughly and oil visible moving parts.



Broadcast spreading is as old as early man. In the early days of agriculture, field seeding was accomplished with hand cast broadcasting. The hand cast method of seeding was a limited factor in growing field crops that were hand seeded.



Mechanized casting came into being in 1868 when Samuel Speicher invented the Hand Crank "Cyclone" Seeder.

The seed sower was a breakthrough in field seeding. It was hailed as a major advancement in agricultural implements.



Paul Speicher put the hand crank seeder on wheels in 1955.

This development ushered in a new era in spreading and spreading products. New products and product forms adapted to broadcast spreading were developed.



In 1988 a new dimension was added to broadcast spreading - SPREAD PATTERN CONTROL - a dead center spread pattern equalizer.

Spyker's Accuway® spread pattern equalizer solves a complicated problem with a fundamental patented solution.

## 1 YEAR LIMITED WARRANTY

This is warranted to the original purchaser only, other than used commercially, against defects in materials and workmanship, for a period of one year from the date of purchase.

\*For Spyker Spreaders LLC, products employing metal gear systems, pinion and bevel, these metal gears, only, not inclusive of any other parts or materials, are warranted for the life of the spreader, not to be used for replacement or repair past original purchase.

Spyker Spreaders LLC will not be liable for any loss, damage or expense including, but not limited to, consequential or incidental damages, arising from the operation, condition or use of the item. The sole and exclusive remedy against Spyker Spreaders LLC being the replacement of the defective parts. This warranty gives you specific legal rights, and you may also have other rights which vary from state to state.

THIS EXPRESS WARRANTY, WHICH IS APPLICABLE ONLY TO THE ORIGINAL PURCHASE, IS IN LIEU OF AND EXCLUDES ALL OTHER WARRANTIES, WHETHER EXPRESSED OR IMPLIED BY OPERATION OF LAW OR OTHERWISE, INCLUDING ANY WARRANTY OF MERCHANTABILITY OR FITNESS FOR PARTICULAR PURPOSE.

**SPYKER SPREADERS LLC**

P.O. Box 7 • Urbana, IN 46990 USA

## FEATURES & BENEFITS

"ACCUWAY" Spread Pattern Equalizer  
ENSURES spreading dead center of the  
spreader. (Indicated with "22" in model number)

Gears are unconditionally guaranteed  
ENSURES trouble free operation.

Dial-A-Matic spread rate control  
ENSURES spreading at exact spread  
rates.

Optional BORDER PATROL spread pattern  
cut-off prevents spreading on drive-ways,  
flower beds, etc.

Extension hoppers available for all round  
hopper spreaders. Adds 20 lbs. to  
capacity.

Shipped Set-Up. Saves time and labor  
ENSURES proper assembly. (except #64)

Stainless steel frames ensure longer  
spreader life, easier maintenance and  
present a quality image.

High grade plastic non-corroding wheels  
with nylon bearings, no lubrication  
required, ENSURES trouble free  
maintenance.



20 SERIES



90 SERIES



88 SERIES



MODEL 298  
Mulch Spreader

MODEL 299  
Mulch Spreader

P.O. Box 7 • Urbana, IN 46990 USA  
1-800-972-6130 • Fax 260-774-3416