



southbend

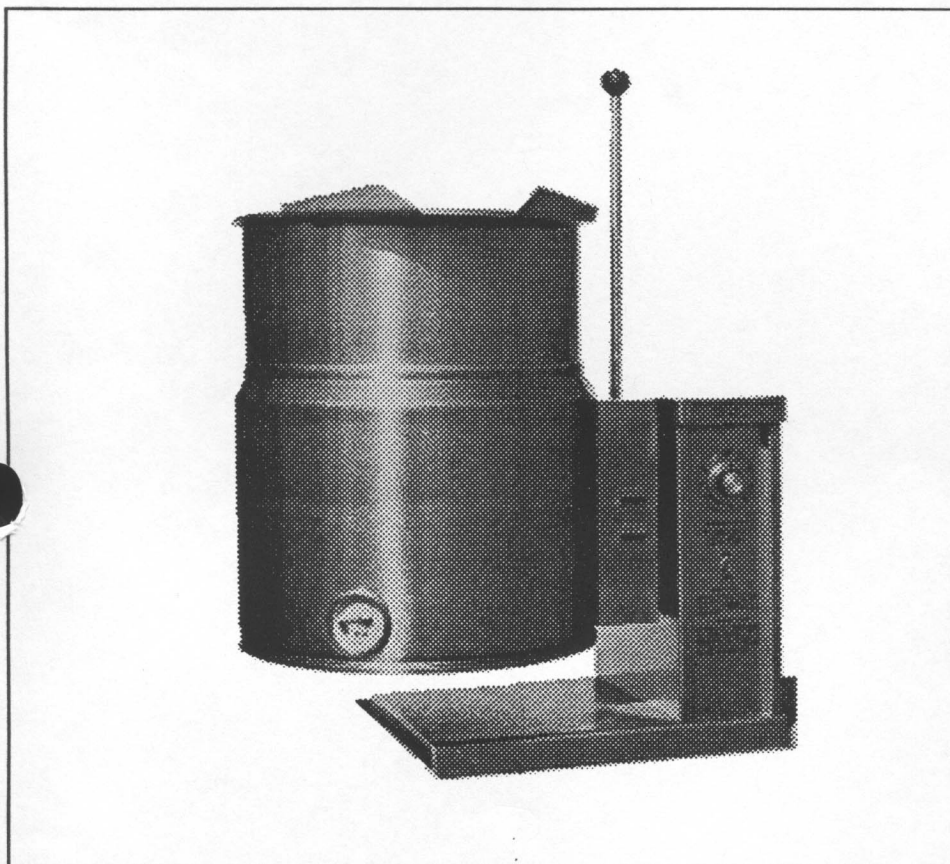
JOB _____ ITEM # _____

A MIDDLEBY COMPANY

TABLE KETTLE

Electric, Self-Contained, 2/3 Jacket, Tilting

MODELS:

6 Gallon (23 Liter)
KECT-0610 Gallon (38 Liter)
KECT-1012 Gallon (45 Liter)
KECT-12**Model KECT-10****OPTIONS:**

- Lift-off cover
- Stainless steel basket
- Floor stands

- Water faucet - single pantry
- Water faucet - double pantry
- Tilt-brake

■ **INQUIRE TO FACTORY FOR SPECIAL OR CUSTOM REQUIREMENTS.**

We reserve the right to change specifications and product design without notice. Such revisions do not entitle the buyer to corresponding changes, improvements, additions or replacements for previously purchased equipment. Southbend has a policy of continuous product research and improvement.

Southbend Table Kettles offer unsurpassed versatility... rugged, dependable and are the most durable you can buy... up to 25% heavier than other competitive models, as proven by a comparison of shipping weights.

Assembly Structure

Each table electric tilting kettle liner is a one-piece welded construction made of type 316 stainless steel with #4 sanitary finish, 2/3 jacketed, and factory charged with water and anti-freeze. The kettle has a convenient pouring lip and a right side handle, which permits easy tilting. The kettle returns to an upright position when released and is fully serviceable in the field. The bottom of the kettle is hemispherical in design for superior heat distribution. The mounting base includes the kettle mounting lugs concealed inside a rectangular enclosure and a tilt mechanism housing of stainless steel.

Heating System

A.S.M.E. code stamped for operation up to 50 psi (3.8 kg/cm²), the kettle is electric, self-contained and factory charged with chemically pure water and anti-freeze. The kettle is then sealed at the factory. All kettles have removable elements which are replaceable in the field.

Control System

The control panel is located on the front right side of the unit, in full view of the operator, and is easy to use. Standard controls include pressure gauge, cooking light, low water light, built-in contactor, and thermostat which ranges from 100°F to 290°F.

Safety Features

Safety features include a low water cut off, and a pressure relief valve.

Technical Data

Unit dimensions, utility information, construction specifications and miscellaneous information is listed on the reverse side.

Warranty

One year Parts and Labor Warranty at no extra charge from the date of Purchase.



Made in Canada

1100 Old Honeycutt Road
Fuquay-Varina, NC 27526
(919) 552-9161
FAX (919) 552-9798
(800) 348-2558

KECT-10

MODELS:

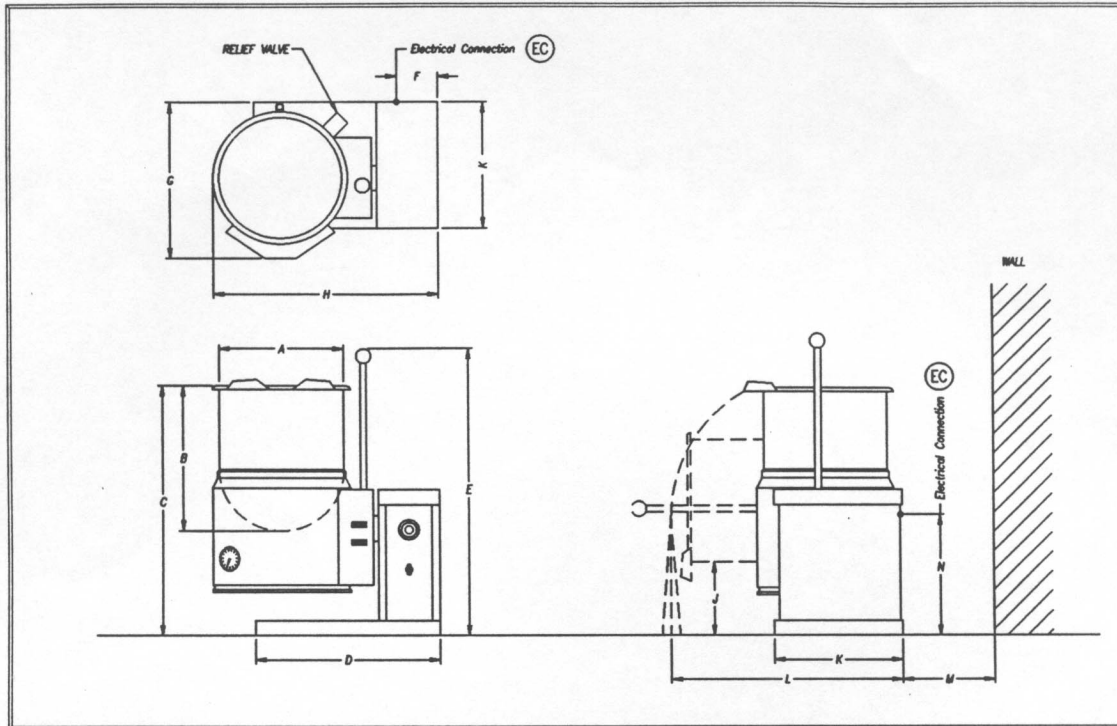
 KECT-06

 KECT-10

 KECT-12

DIMENSIONS

MODEL	CAPACITY	UNITS	A	B	C	D	E	F	G	H	J	K	L	M	N	CUBIC	CRATED
																VOLUME	WEIGHT
KECT-06	6 gallons	inches	12	14.38	24.5	18	30.5	4	17	21.75	6.5	12.5	27	2.75	12.38	27 CU. FT.	110 LBS
	23 liters	mm	305	365	622	457	775	102	432	552	165	318	686	70	314	.76 CU. M.	50 KG
KECT-10	10 gallons	inches	16	15	25.5	18	33.5	4	20	25.5	7	12.5	28	5	14.75	27 CU. FT.	165 LBS
	38 liters	mm	406	381	648	457	851	102	508	648	178	318	711	127	375	.76 CU. M.	74.9 KG
KECT-12	12 gallons	inches	16	17	27.5	18	33	4	20	25.5	7	12.5	30	5	14.75	27 CU. FT.	180 LBS
	45 liters	mm	406	432	699	457	838	102	508	648	178	318	762	127	375	.76 CU. M.	81.7 KG



ELECTRICAL CHARACTERISTICS

MODEL	PHASE	208V		230V		240V		380V		415V		480V	
		KW	AMP	KW	AMP	KW	AMP	KW	AMP	KW	AMP	KW	AMP
KECT-06	1	7.5	36.0	7.5	32.6	7.5	31.3						
	3	7.5	20.8	7.5	18.8	7.5	18.1	7.5	11.4	7.5	10.4	7.5	9.0
KECT-10	1	12.0	57.6	12.0	52.2	12.0	50.0						
	3	12.0	33.3	12.0	30.2	12.0	28.9	12.0	18.3	12.0	16.7	12.0	14.5
KECT-12	1	12.0	57.6	12.0	52.2	12.0	50.0						
	3	12.0	33.3	12.0	30.2	12.0	28.9	12.0	18.3	12.0	16.7	12.0	14.5

CONSTRUCTION (BIDDING) SPECIFICATIONS:

Interior/Exterior: Kettle liner is one-piece welded construction made of type 316 stainless steel, with #4 sanitary finish. 2/3 Jacketed; factory charged with water and anti-freeze. Kettle has convenient pouring lip and right side handle, which permits easy tilting. Kettle returns to upright position when released.

Steam/Heat Source: Electric, self-contained. A.S.M.E. code stamped for operation up to 50 P.S.I.

Capacity: KECT-06 is 6 gallons – 23 liters.
 KECT-10 is 10 gallons – 38 liters.
 KECT-12 is 12 gallons – 45 liters.

CONTROLS: Control panel located on front, right side of unit. Standard controls include:

- Thermostat (100°F to 290°F)
- Pressure Gauge
- Cooking Light
- Low-Water Light
- Built-in Contactor

Safety Features Include:

- Low Water Cut-off
- Pressure Relief Valve

MISCELLANEOUS INFORMATION:

Check local codes for installation and sanitary regulations.

INTENDED FOR COMMERCIAL USE ONLY. NOT FOR HOUSEHOLD USE.

 **southbend**

A MIDDLEBY COMPANY

Southbend, in line with its policy to continually improve its products, reserves the right to change materials or specifications without notice.