

STEAM KETTLE Gas, Self-Contained

MODELS:

20 Gallon
KSLG-20

40 Gallon
KSLG-40

60 Gallon
KSLG-60



Model KSLG-60 (with lid assist) 1½" drawoff standard

OPTIONS:

- ☐ Lid assist – optional on 20 & 40 gallon; standard on 60 gallon
- ☐ Type 316L stainless steel kettle liner
- ☐ Stainless steel tri basket
- ☐ Water faucet – single pantry
- ☐ Water faucet – double pantry
- ☐ Water faucet – single pantry w/60" spray rinse hose – cold water
- ☐ Water faucet – double pantry w/60" spray rinse hose – hot & cold
- ☐ Water faucet bracket only

- ☐ 1" quick disconnect with 4' flexible hose (Pt. #1130195)
- ☐ Electronic ignition
- ☐ Water volume meter
- ☐ Contour measuring strip
- ☐ 1/4" perforated strainer for use with 2" drawoff – one furnished standard
- ☐ 1/4" perforated strainer for use with 3" drawoff
- ☐ 1/8" perforated strainer for use with 2" drawoff
- ☐ 1/8" perforated strainer for use with 3" drawoff
- ☐ 2" diameter plug type drawoff valve
- ☐ 3" diameter plug type drawoff valve
- ☐ Solid drawoff interior plug for 2" drawoff
- ☐ Solid drawoff interior plug for 3" drawoff

■ INQUIRE TO FACTORY FOR SPECIAL OR CUSTOM REQUIREMENTS.

Southbend Steam Kettles offer unsurpassed versatility . . . rugged, dependable and are the most durable you can buy . . . up to 25% heavier than other competitive models, as proven by a comparison of shipping weights.

Assembly Structure

Each commercial gas kettle has an exterior constructed of type 304 stainless steel #4 sanitary finish and 2" diameter stainless steel adjustable legs. The interior kettle liner is one piece welded construction made of type 304 stainless steel with #4 sanitary finish, 2/3 jacketed, stainless steel hinge cover, and bottom perforated strainer. 1½" drawoff is standard.

Heating System

The steam/heat source is self-contained gas, factory charged with chemically pure water. A.S.M.E. code stamped for operation up to 50 psi, the steam kettle temperature ranges from 150°F to 298°F. The burners are serviceable, high efficiency stainless steel, with no air shutter adjustment.

Control System

The recessed control panel is located on the front side of the unit, in full view of the operator, and is easy to use. Standard controls include direct immersion thermostat, water sight glass, cooking light, pressure gauge and low water light.

Safety Features

Safety features include low water cut off, pressure relief valve, pressure switch and a 100% safety shut-off valve.

Technical Data

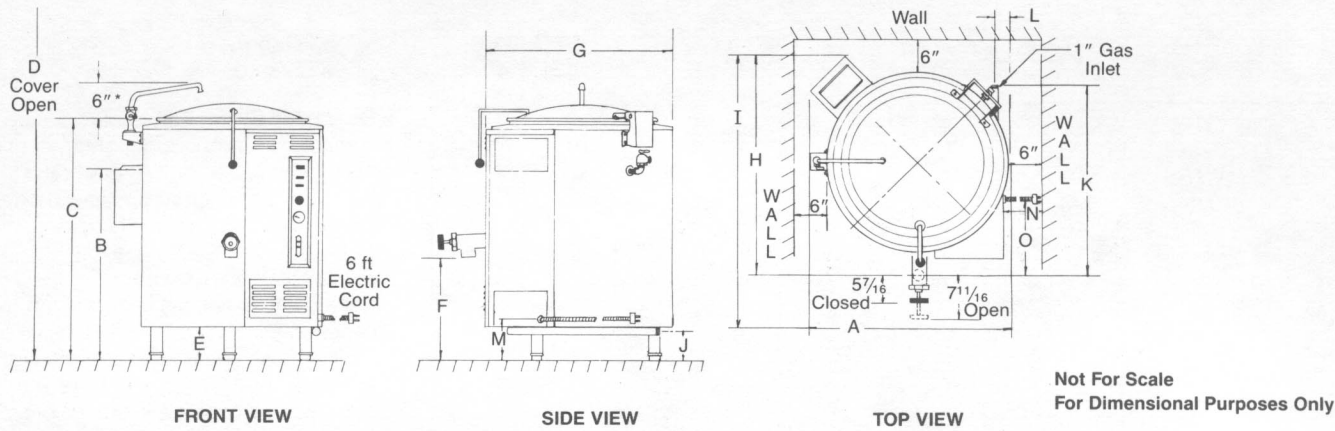
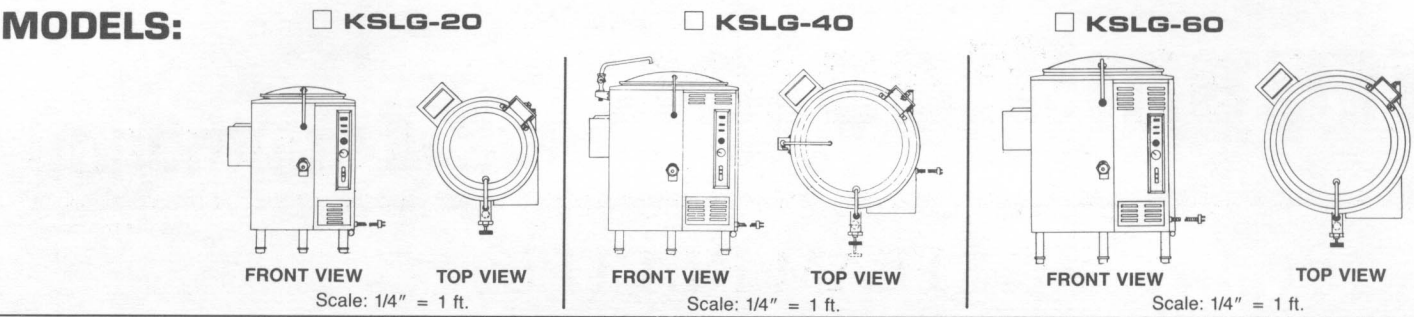
Unit dimensions, utility information, construction specifications and miscellaneous information is listed on the reverse side.

Warranty

One year Parts and Labor Warranty at no extra charge from the date of purchase.

We reserve the right to change specifications and product design without notice. Such revisions do not entitle the buyer to corresponding changes, improvements, additions or replacements for previously purchased equipment.





DIMENSIONS:

() = Millimeters

MODEL	Width A	HEIGHT			E	F	DEPTH			GAS CONN.			ELECTRIC CONN.			CRATE SIZE			CUBIC VOLUME	CRATED WEIGHT
		B	C	D			G	H	I	J	K	L	M	N	O	Width	Depth	Height		
<input type="checkbox"/> KSLG-20	32" (813)	32" (813)	40" (1016)	63.3125" (1610)	6" (152)	19" (483)	26" (660)	35.5" (902)	43.1875" (1097)	5.5" (140)	28" (711)	1.25" (32)	8" (203)	6" (1524)	10" (254)	37" (940)	40" (1016)	49" (1244)	42 cu. ft. 1.26 cu. m.	550 lbs. 249.5 kg.
<input type="checkbox"/> KSLG-40	40" (1016)	35" (889)	43.5" (1105)	73.3125" (1862)	6" (152)	19" (483)	32" (813)	40.5" (1029)	48.1875" (1224)	5.5" (140)	35" (889)	2.5" (64)	8" (203)	6.75" (171)	11" (279)	42" (1067)	47" (1194)	54" (1372)	61.7 cu. ft. 1.85 cu. m.	700 lbs. 317.5 kg.
<input type="checkbox"/> KSLG-60	44" (1118)	39" (991)	49" (1245)	82.3125" (2091)	8" (203)	21" (533)	36" (914)	44" (1118)	51.6875" (1313)	7.5" (191)	35" (889)	3.5" (89)	10" (254)	7.5" (184)	13.5" (343)	45" (1143)	54" (1372)	60" (1524)	84.4 cu. ft. 2.53 cu. m.	850 lbs. 385.5 kg.

*NOTE — Faucet is optional.

UTILITY INFORMATION:

GAS — KSLG-20 — Total 100,000 BTU. One 1" male connection (for location, see drawing above). ☐ NATURAL ☐ PROPANE
Required operating pressure: Natural Gas 4" W.C.; Propane Gas 10" W.C.

GAS — KSLG-40 — Total 100,000 BTU. One 1" male connection (for location, see drawing above). ☐ NATURAL ☐ PROPANE
Required operating pressure: Natural Gas 4" W.C.; Propane Gas 10" W.C.

GAS — KSLG-60 — Total 130,000 BTU. One 1" male connection (for location, see drawing above). ☐ NATURAL ☐ PROPANE
Required operating pressure: Natural Gas 4" W.C.; Propane Gas 10" W.C.

ELECTRIC — KSLG-20, KSLG-40, KSLG-60

☐ STANDARD: 115/60/1 —furnished with 6-ft. cord w/3-prong plug. Total maximum amps 2.0.

☐ OPTIONAL: 208/60/1 or for use on 3 (190 to 219 volts) — supply must be wired to unit — see drawing above. Total maximum amps 1.0.

☐ OPTIONAL: 236/60/1 or for use on 3 (220 to 240 volts) — supply must be wired to unit — see drawing above. Total maximum amps 1.0.

CONSTRUCTION (BIDDING) SPECIFICATIONS:

ALL UNITS — Commercial Gas Kettle

Exterior: Type 304 stainless steel with #4 sanitary finish. 2" diameter stainless steel adjustable legs.

Interior Kettle Liner: Is one piece welded construction made of Type 304 stainless steel with #4 sanitary finish. 2/3 jacketed; stainless steel hinged cover, bottom perforated strainer.

Steam/Heat Source: Gas, self-contained. Factory charged with chemically pure water. A.S.M.E. code stamp for operation up to 50 PSI.

Burners: Serviceable, high efficiency stainless steel. No air shutter adjustment.

Capacity: KSLG-20 is 20 gallon – 76 liter
KSLG-40 is 40 gallon – 152 liter
KSLG-60 is 60 gallon – 228 liter

Drawoff: 1½" diameter sanitary compression disc.

Controls: Recessed control panel located on front right side of unit in full view of user. Standard controls include:

- Direct Immersion Thermostat (150° F to 298° F)
- Water Sight Glass
- Cooking Light
- Pressure Gauge
- Low Water Light

Safety Features Include:

- Low Water Cut Off
- Pressure Relief Valve
- Pressure Switch
- 100% Safety Shut Off Valve

MISCELLANEOUS INFORMATION:

For installation on combustible floors (with 6"-high legs) and adjacent to combustible walls, allow 6" (15 cm) clearance on sides and 2" at flue box on rear.

Recommended — install under vented hood.

Not intended for direct connection to flue.

Check local codes for fire and sanitary regulations.

Intended for other than household use.

Southbend, in line with its policy to continually improve its products, reserves the right to change materials or specifications without notice.



1100 Old Honeycutt Road
Fuquay-Varina, NC 27526
(919) 552-9161
FAX (919) 552-9798
(800) 348-2558