

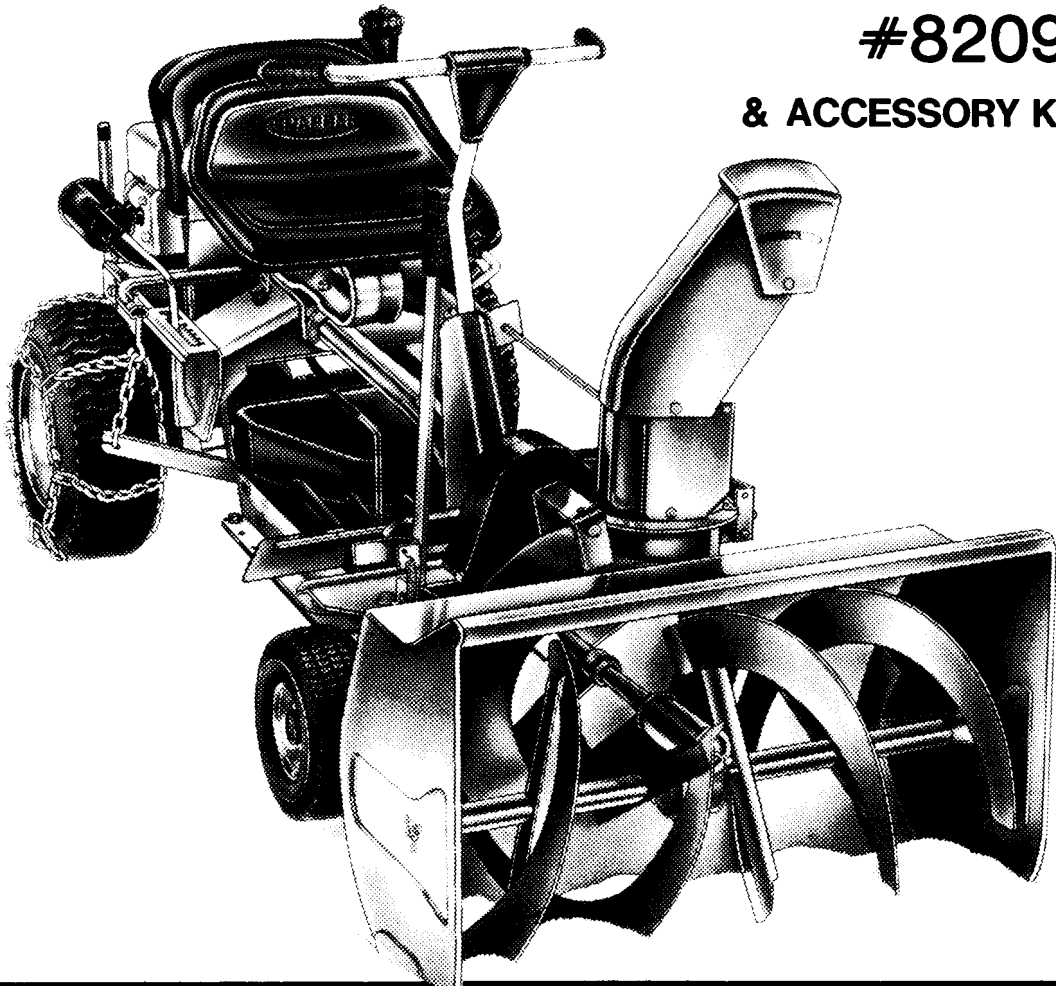
Parts Manual
for

SNAPPER **RIDER**

SNOW THROWER ATTACHMENT

#82099

& ACCESSORY KITS



IT IS THE POLICY OF McDONOUGH POWER EQUIPMENT TO IMPROVE ITS PRODUCTS WHENEVER IT IS POSSIBLE AND PRACTICAL TO DO SO. WE RESERVE THE RIGHT TO MAKE CHANGES OR ADD IMPROVEMENTS AT ANY TIME WITHOUT INCURRING ANY OBLIGATION TO MAKE SUCH CHANGES ON PRODUCTS MANUFACTURED PREVIOUSLY.

McDonough Power Equipment
McDonough, GA • 30253

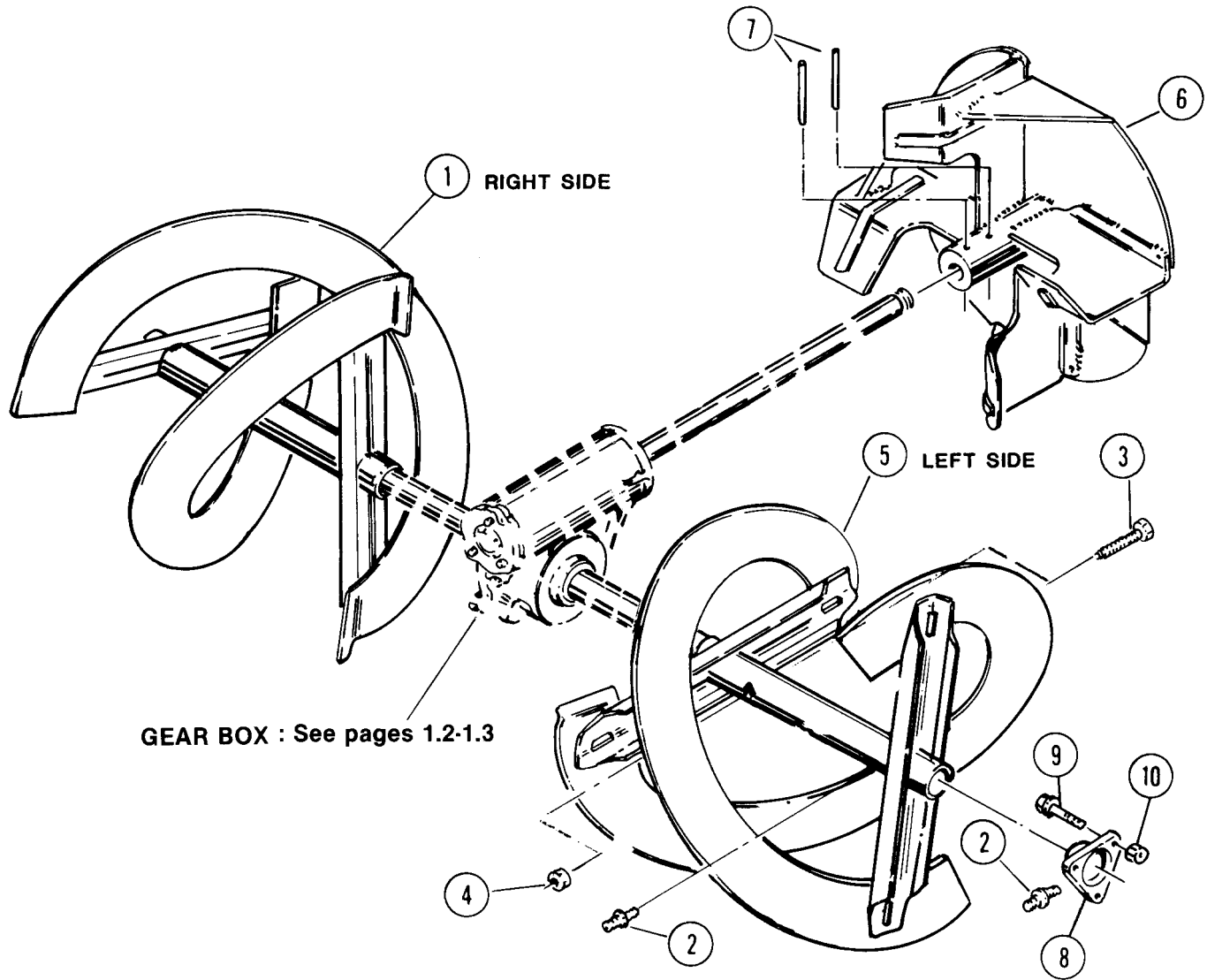


INDEX - MAIN COMPONENTS

SUBJECT	PAGE(S)	SUBJECT	PAGE(S)
Arm, Idler	3.1-3.2	Gears, Chute Crank	1.4-1.5
Assembly, Gear Box	1.2-1.3	Gear, Worm (Gear Box)	1.2-1.3
Assembly, Spindle	3.3	Grip, Blade Lever	3.1-3.2
Augers	1.1	Grip, Lift Handle	2.1-2.2
		Guide, Belt	3.1-3.2
Band, Brake	3.1-3.2		
Bearing, Auger Shaft	1.1	Handle, Blade	3.1-3.2
Bearing, Ball (Spindle)	3.3	Handle, Lift	2.1-2.2
Bearing, Impeller Shaft	1.6-1.7	Harness, Wiring	3.1-3.2
Bearing, Sheave	1.6-1.7	Housing, Impeller Bearing	1.6-1.7
Belts, Blower	1.6-1.7	Idlers	3.1-3.2
Belt, Engine Drive	(see Rider Parts)	Impeller (Fan)	1.1
		Interlock	3.1-3.2
Blade, Scraper	1.6-1.7		
Blower, (Housing)	1.4-1.5	Joint, Universal	1.4-1.5
Brace, Rail	3.1-3.2	Kits, Chain	4.3
Bracket, Chute Crank	1.4-1.5	Kit, Drift Cutter	4.2
Bracket, Lift Mounting	2.1-2.2	Kit, Extender	4.1
Brake (Components)	3.1-3.2	Kit, Wheel Weight	4.2
Bushings, Lift Arm	2.1-2.2		
Case, Gear	1.1-1.2	Pedal, Blade Stop	3.1-3.2
Carrier (assembly)	3.1-3.2	Pulleys, Blower	1.6-1.7
Cover, Belt Guard	1.6-1.7	Pulleys, Carrier	3.1-3.2
Cover, Gear Box	1.1-1.2		
Cover, Spindle	3.1-3.2		
Chains, Wheel (Kit)	4.3	Rails, Carrier Side	3.1-3.2
Chute, Discharge	1.4-1.5	Restrictor, Belt	3.1-3.2
Clutch, (Components)	3.1-3.2	Ring, Chute Crank	1.4-1.5
		Ring, Tolerance	3.3
		Runners, Carrier	3.1-3.2
Control, Chute Crank	1.4-1.5		
Control, Throttle	2.1-2.2		
Crank, Chute Control	1.4-1.5	Seal, Oil	1.2-1.3
		Shaft, Auger	1.2-1.3
		Shaft, Impeller	1.2-1.3
		Shear-Bolts	1.1
		Sheaves	1.6-1.7
		Skid-Shoes	1.4-1.5
		Spacers (Pulley)	1.6-1.7
		Spindle Assembly	3.3
		Spring, Latch	2.1-2.2
		Spring, Lift Assist	2.1-2.2
		Spring, Pedal Return	3.1-3.2
		Spring, Tensioning	3.1-3.2
		Switch, Interlock	3.1-3.2
Extender (Kit - 33 & 42")	4.1		
Extension, Discharge Chute	1.4-1.5		
Fan, (Impeller)	1.1	Weight, Carrier	3.1-3.2
Fitting, Grease (Augers)	1.1	Weight, Wheel (Kit)	4.2
Fitting, Grease (Spindle)	3.3	Wing-Nut (Chute)	1.4-1.5
		Worm Bracket (Assy.)	1.4-1.5

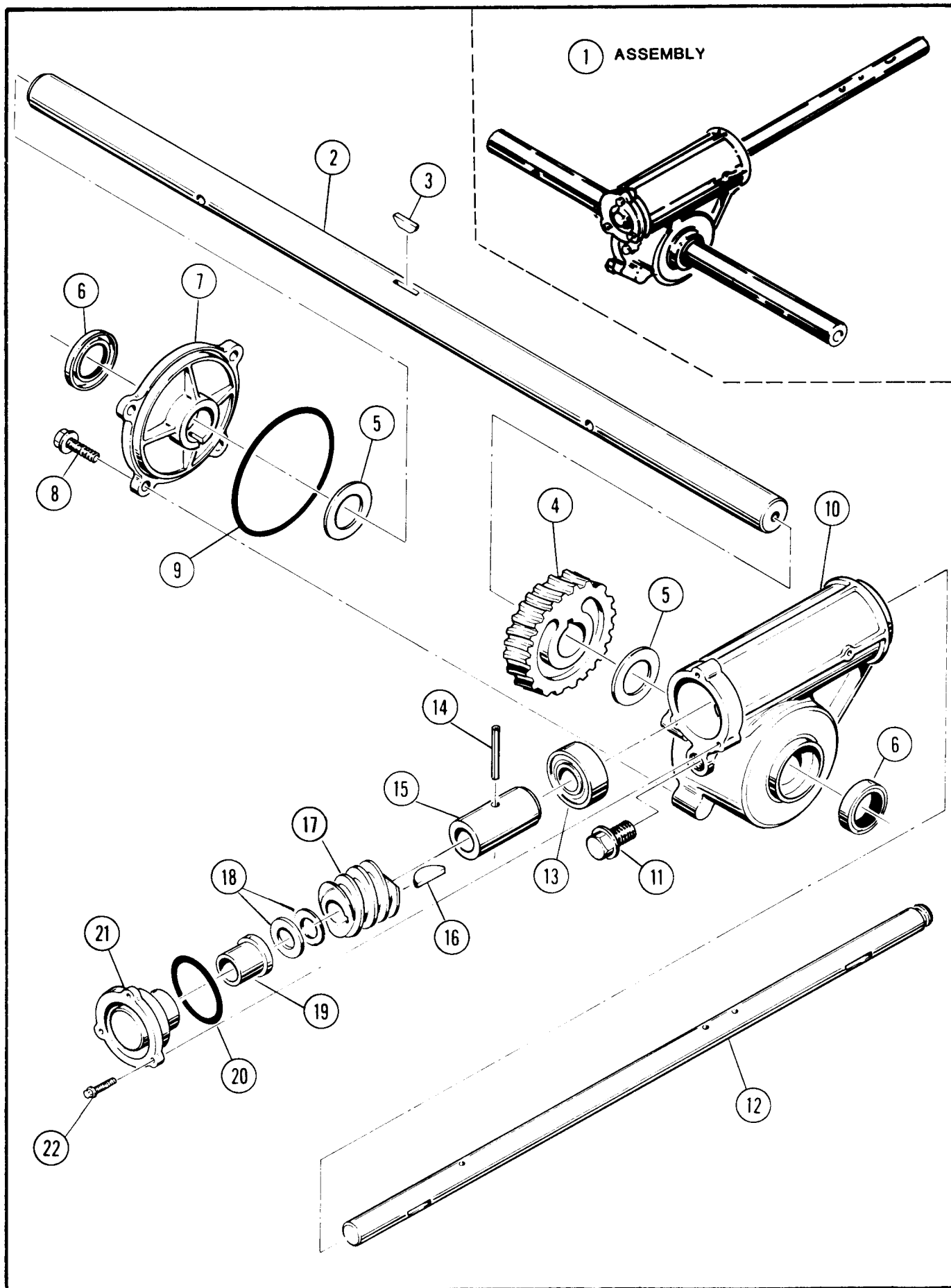
RIDER SNOW THROWER

AUGERS, IMPELLER FAN



ITEM	PART NO.	DESCRIPTION	QTY
1	4-9922	AUGER, Right Side	1
2	1-3864	FITTING, Grease	4
3	1-3865	SHEAR-Bolt	2
4	1-2625	LOCKNUT, Hex Flange	2
5	4-9921	AUGER, Left Side	1
6	4-9677	FAN, Impeller	1
7	1-3862	ROLL-PIN	2
8	1-8452	BEARING, Auger Shaft	2
9	9-0596	BOLT, 1/4cx5/8 Hex Flange Lock	6
10	9-0583	NUT, 1/4-20 Hex Flange Lock	6

GEARBOX, SHAFTS



RIDER SNOW THROWER**GEARBOX, SHAFTS**

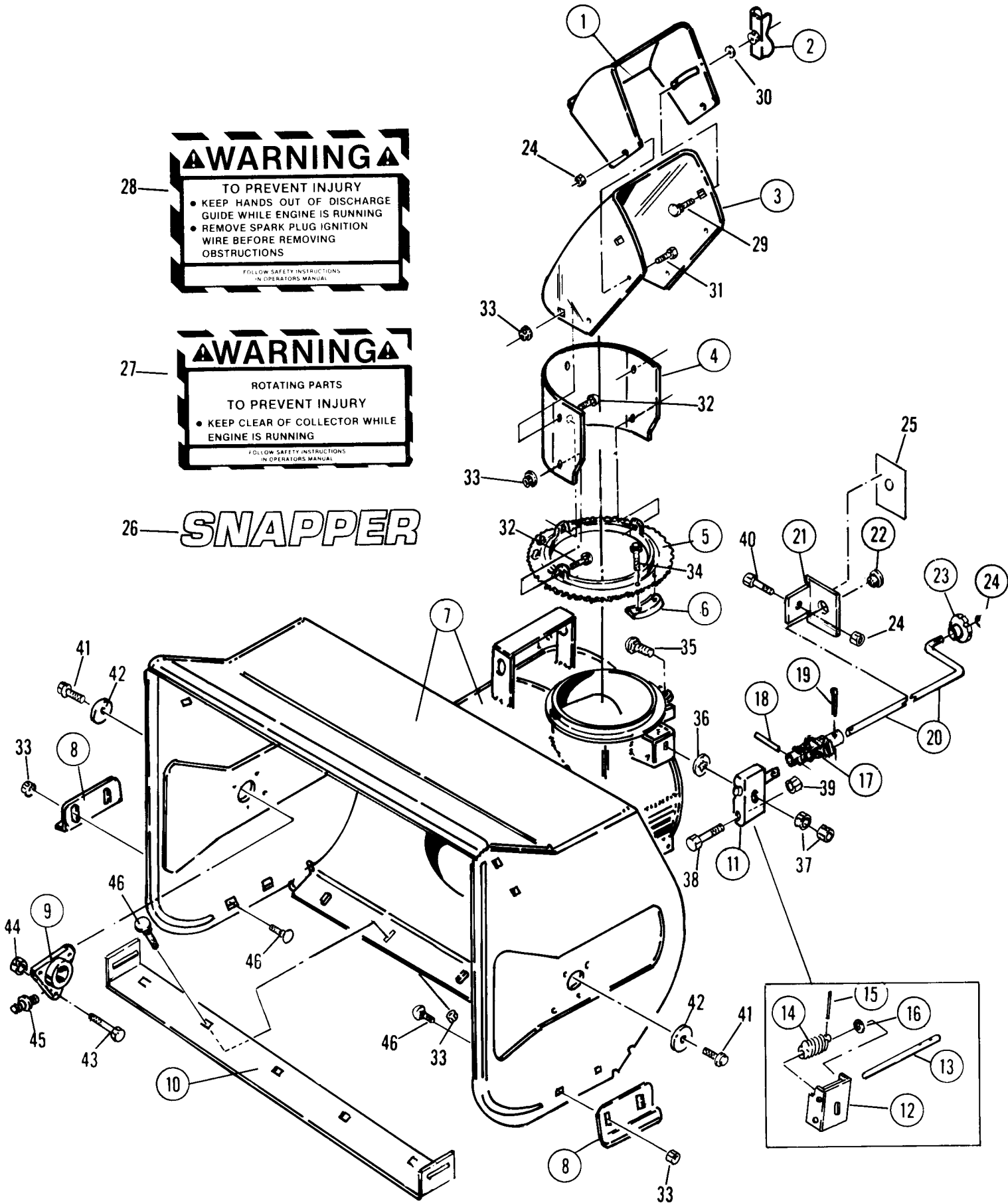
ITEM	PART NO.	DESCRIPTION	QTY
1	5-7296	ASSEMBLY, Gear Case (includes following item)	1
2	2-9552	SHAFT, Auger	1
3	1-3857	KEY, Woodruff	1
4	5-1305	GEAR, Worm	1
5	1-3855	WASHER, Thrust	2
6	1-3858	SEAL, Oil	2
7	1-8451	COVER, Gear Case	1
8	9-0290	SCREW, 1/4-20x3/4 Self Tap	4
9	1-3854	O-RING (Case Cover)	1
10	1-9674	CASE, Gear	1
11	9-0506	PLUG, Check (3/8x1/2 Self Tap Screw)	1
12	2-7619	SHAFT, Impeller Fan	1
13	1-3313	BEARING, Ball	1
14	1-3862	ROLL-PIN, 1/4x1-1½	1
15	1-3856	SPACER	1
16	1-3861	KEY, Woodruff	1
17	2-7606	GEAR, Rolled Worm	1
18	1-0935	WASHER (Spacers)	2
19	1-2252	BUSHING	1
20	1-3853	O-RING (End Cap)	1
21	1-8450	CAP, End	1
22	9-0363	SCREW, 10-24x5/8 Self Tap	3

BLOWER HOUSING, DISCHARGE

▲WARNING▲
TO PREVENT INJURY
 • KEEP HANDS OUT OF DISCHARGE GUIDE WHILE ENGINE IS RUNNING
 • REMOVE SPARK PLUG IGNITION WIRE BEFORE REMOVING OBSTRUCTIONS
FOLLOW SAFETY INSTRUCTIONS IN OPERATORS MANUAL

▲WARNING▲
ROTATING PARTS
TO PREVENT INJURY
 • KEEP CLEAR OF COLLECTOR WHILE ENGINE IS RUNNING
FOLLOW SAFETY INSTRUCTIONS IN OPERATORS MANUAL

26 **SNAPPER**

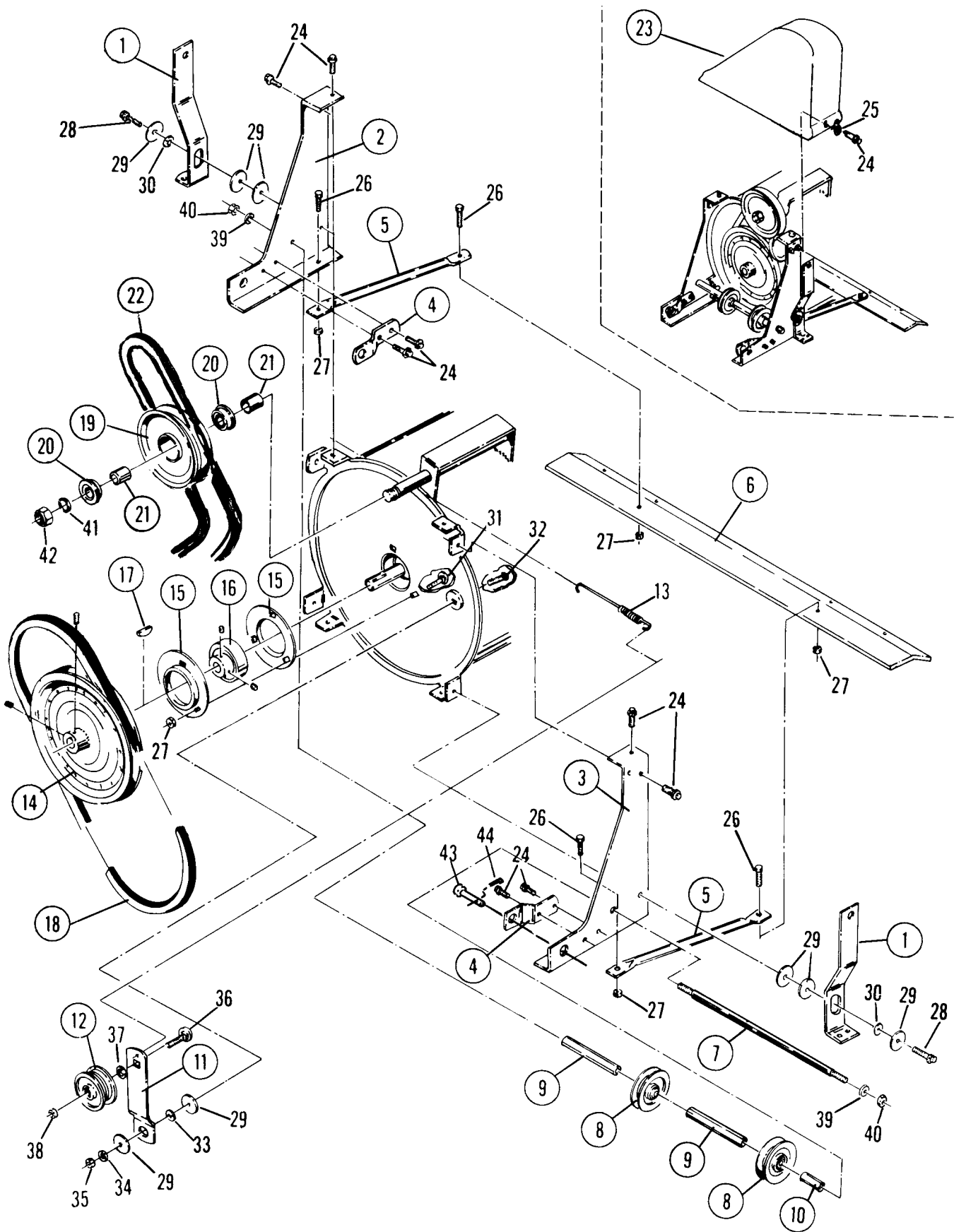


PARTS on REAR SIDE of BLOWER SHOWN ON PAGE 1.6

RIDER SNOW THROWER**BLOWER HOUSING, DISCHARGE**

ITEM	PART NO.	DESCRIPTION	QTY
1	3-7966	DEFLECTOR	1
2	5-0615	WING-NUT	1
3	3-9969	CHUTE	1
4	3-6011	EXTENSION, Chute	1
5	4-7801	RING, Chute	1
6	1-1938	RETAINER, Chute Ring	3
7	4-9923	HOUSING,Blower	1
8	3-7982	SHOE, Skid	2
9	1-8452	BEARING, Auger Shaft	2
10	3-6006	BLADE, Scraper	1
11	5-1331	ASSEMBLY, Worm Bracket(includes Items 12 thru 18)	1
12	3-7963	BRACKET, Worm	1
13	2-1852	SHAFT, Worm	1
14	2-1828	WORM	1
15	1-4001	ROLL-PIN, 1/8x3/4	1
16	1-1079	WASHER, Spring Steel	1
17	1-4230	UNIVERSAL JOINT	1
18	1-3877	ROLL-PIN, 1/8x1	1
19	9-0041	COTTER-PIN, 1/8x1	1
20	1-4209	CRANK, Chute	1
21	3-2208	BRACKET,Chute Crank	1
22	1-2117	BUSHING, Crank	1
23	1-3901	KNOB, Chute Crank	1
24	9-0184	LOCK NUT, 5/16C	3
25	1-4212	DECAL, Chute Control	1
26	1-8507	DECAL, SNAPPER	1
27	1-3930	DECAL, Collector Warning	1
28	1-3929	DECAL, Deflector Warning	1
29	9-0074	BOLT, 1/4 Cx 3/4 Carriage	2
30	9-0055	WASHER, 1/4 SAE Flat	1
31	9-0203	SCREW , 5/16Cx1/2, Hex Head Cap	2
32	9-0731	BOLT, 5/16-18x1/2 Gr.5 Carriage	3
33	1-2625	NUT, 5/16-18 Flange	13
34	9-0363	SCREW, 10Cx1/2 Hex Hd Self Tap.	6
35	9-0208	BOLT, 5/16Cx1 Carriage	1
36	1-1791	RETAINER, Bolt	1
37	9-0196	NUT, 5/16C Hex	2
38	9-0246	SCREW, 5/16-24x2-1/2 Hex Head Cap	1
39	9-0222	LOCK NUT, 5/16-24 Hex	2
40	9-0204	SCREW, 5/16-18x5/8 Hex Head Cap	1
41	9-0506	SCREW, 3/8Cx1/2 Self Tap.	2
42	1-3866	WASHER	2
43	9-0596	BOLT,1/4Cx5/8 Hex Flange Lock	6
44	9-0771	NUT, 1/4C Hex Flange	6
45	1-3864	FITTING, Grease	2
46	9-0001	BOLT, 5/16-18x3/4 Carriage	9

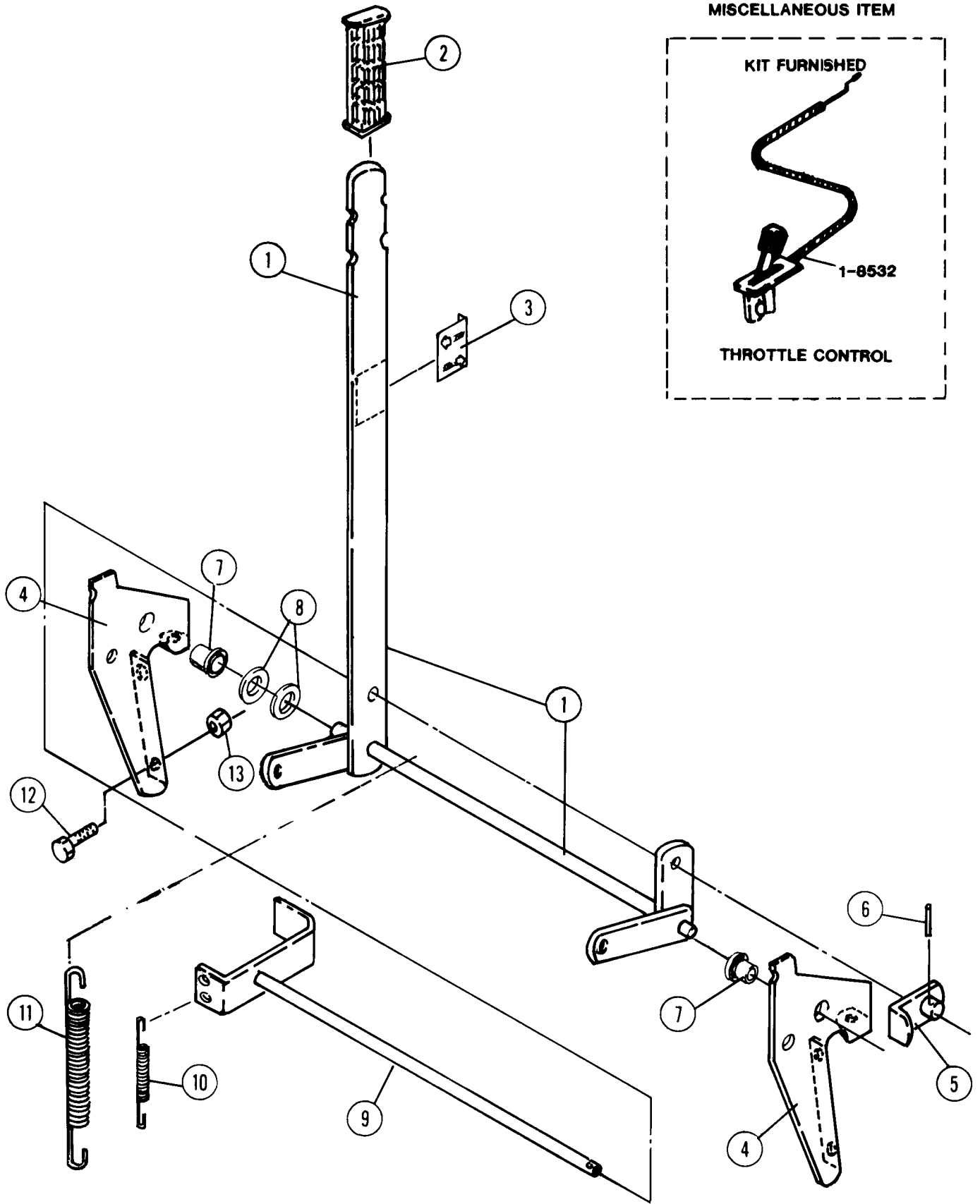
BLOWER (REAR VIEW) & BELTS



RIDER SNOW THROWER**BLOWER (REAR VIEW) & BELTS**

ITEM	PART NO.	DESCRIPTION	QTY
1	3-8011	LINK, Lift	2
2	3-6409	BRACKET, Left Side Mounting	1
3	3-6008	BRACKET, Right Side Mounting	1
4	3-2195	BRACKET, Lower Mounting	2
5	3-8008	BRACE	2
6	3-8009	BAR, Stiffener	1
7	2-7622	ROD, Idler	1
8	1-4208	IDLER, Belt	2
9	2-1854	SPACER,(Long)	2
10	2-1855	SPACER,(Short)	1
11	3-2192	ARM, Idler	1
12	1-3850	IDLER	1
13	1-4211	SPRING, Idler	1
14	1-3867	PULLEY, 8 INCH (Includes 2 Setscrews)	1
15	1-3931	HOUSING, Bearing	2
16	1-3924	BEARING (Includes 2 Setscrews)	1
17	1-3861	KEY, Woodruff	1
18	1-3939	BELT, Blower (short) 36.5"	1
19	1-8516	SHEAVE, Reduction	1
20	1-0756	BEARING	2
21	2-1849	SPACER, Bearing	2
22 a	1-4225	BELT, Carrier to Blower (Long) 100"	1
22 b	1-4240	BELT, Carrier to Blower (for 33" model only)(Long) 103.25"	1
23	1-9707	COVER,Belt Guard	1
24	9-0361	SCREW, 5/16-18x5/8 Self tap	10
25	9-0188	WASHER, 3/8 SAE (Flat)	2
26	9-0606	BOLT, 5/16-18x5/8 Flange Lock	4
27	1-2625	LOCKNUT, 5/16 Hex Flange	7
28	9-0369	SCREW, 5/16-18x1 Self tap	2
29	1-3848	WASHER	7
30	1-4206	SPACER	1
31	9-0001	BOLT, 5/16Cx3/4 S.N. Carriage	3
32	9-0383	BOLT, 5/16-18x1 S.N. Carriage	1
33	1-3849	SPACER	1
34	9-0187	LOCKWASHER, 5/16 Split	1
35	9-0196	NUT, 5/16-18	1
36	9-0791	BOLT, 3/8-16x1-1/2 S.N. Carriage	1
37	9-0500	WASHER, 7/16 SAE	1
38	9-0499	LOCKNUT, 3/8-16 Hex	1
39	9-0118	LOCKWASHER, 3/8 Split	1
40	9-0130	NUT, 3/8-16	1
41	1-0690	WASHER	1
42	9-0356	LOCKNUT, 5/8-18 Jam	1
43	1-4243	PIN, Clevis	2
44	1-1714	HAIR-PIN	2

LIFT COMPONENTS

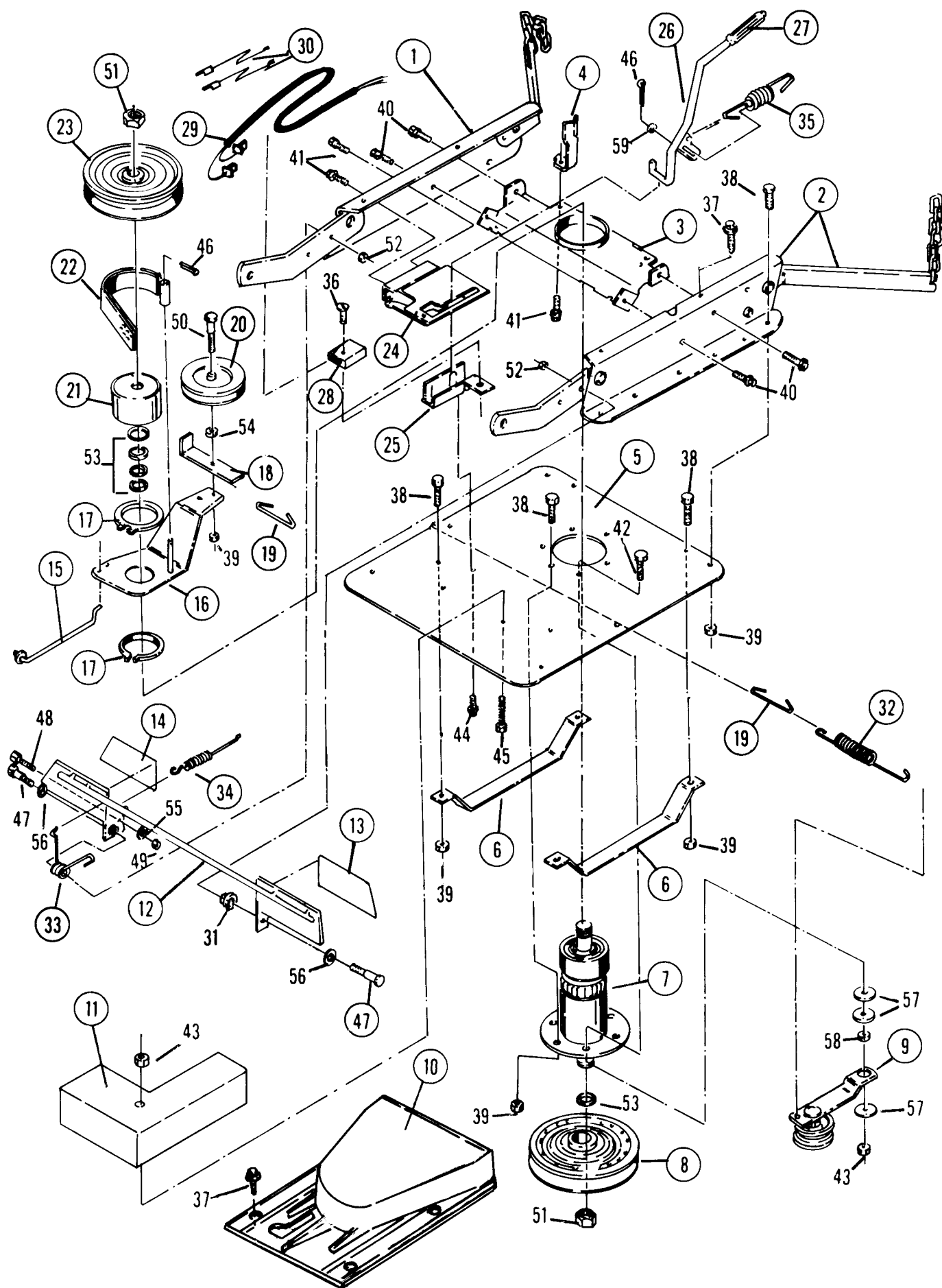


RIDER SNOW THROWER

LIFT COMPONENTS

ITEM	PART NO.	DESCRIPTION	QTY
1	4-7798	LIFT HANDLE (Arm Structure)	1
2	1-1870	GRIP	1
3	1-4226	DECAL, Lift Handle	1
4	3-6023	BRACKET, Lift Mounting	2
5	4-0478	LATCH (Structure)	1
6	1-4217	ROLL-PIN	1
7	1-0694	BUSHING	2
8	9-0183	WASHER	2
9	4-0477	SHAFT, Lift (Structure)	1
10	1-3919	SPRING, Latch	1
11	1-4210	SPRING, Lift Assist	2
12	9-0204	SCREW, 5/16-18 x 5/8 Hex Head Cap	6
13	9-0184	LOCKNUT, 5/16-18	6

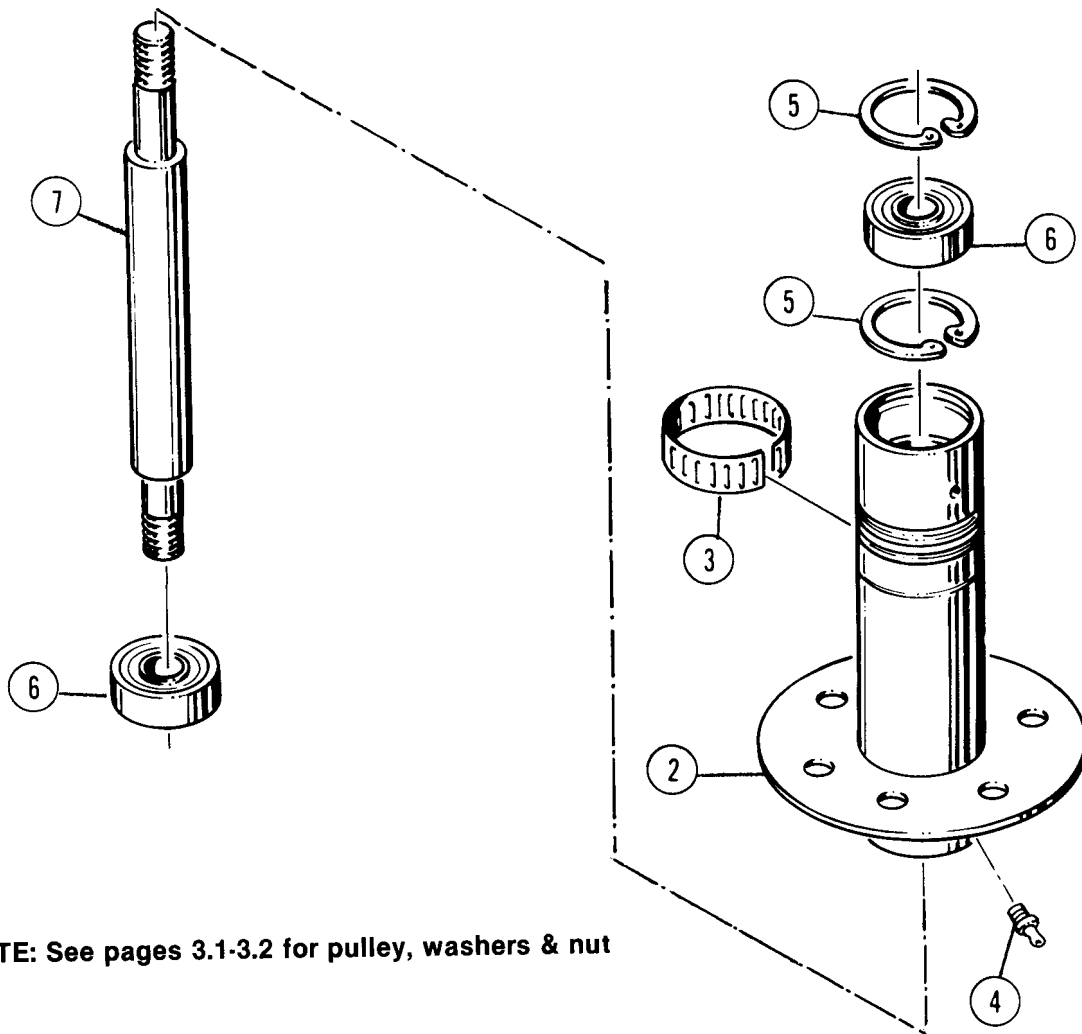
CARRIER COMPONENTS



RIDER SNOW THROWER

CARRIER COMPONENTS

ITEM	PART NO.	DESCRIPTION	QTY
1	5-9609	RAIL ASSEMBLY, Right Side	1
2	5-9610	RAIL ASSEMBLY, Left Side	1
3	3-1838	BRACE, Rail Top	1
4	3-1855	GUIDE, Belt	1
5	3-6010	PLATE, Spindle Mounting	1
6	3-8017	RUNNER	2
7	5-7295	SPINDLE ASSEMBLY(Refer to Page 3. 3 for parts)	1
8	1-3867	PULLEY, 8 INCH (Blower Belt)	1
9	5-1332	IDLER ARM ASSEMBLY (Lower Arm)	1
10	1-9952	COVER, SPINDLE (Includes Decals except 1-4232)	1
11	1-8531	WEIGHT, Carrier	1
12	4-7788	PEDAL, Blade/Auger	1
13	1-4170	TREAD, Blade Stop-Left Side	1
14	1-4169	TREAD,Blade Stop-Right Side	1
15	1-2055	ROD, Idler	1
16	4-7716	ARM, Idler	1
17	1-0740	RING, Retaining	2
18	3-2111	RESTRICTOR, Belt	1
19	1-4219	LINK, Wire	2
20	1-1029	PULLEY, Idler	1
21	3-0817	DRUM, Brake	1
22	5-0627	BAND, Brake	1
23	1-0787	PULLEY, Engine Drive Belt	1
24	5-1310	CLUTCH-PLATE ASSEMBLY	1
25	3-8021	MOUNT, Blade Handle	1
26	4-0472	HANDLE, Blade	1
27	1-0681	GRIP, Handle	1
28	1-8524	SWITCH, Interlock	1
29	1-8525	HARNESS, Wiring	1
30	1-4233	CONNECTOR-LEADS	2
31	1-1016	BEARING, Nylon	1
32	1-4211	SPRING (Blower Belt Tensioning)	1
33	1-4166	SPRING (Blade Pedal Latch)	1
34	1-4167	SPRING (Blade Pedal Return)	1
35	1-4168	SPRING (Blade Handle)	1
36	9-0299	SCREW, 10-32x1 Self Tap	1
37	9-0723	SCREW, ¼-20x½ Self Tap	4
38	9-0292	SCREW, 3/8-24x3/4 Hex Head Cap	13
39	9-0289	LOCKNUT, 3/8-24 Hex	14
40	9-0324	SCREW, 3/8-16x1 Self Tap	4
41	9-0361	SCREW, 5/16-18x5/8 Self Tap	3
42	9-0240	SCREW, 5/16Fx1-¼ Hex Head Cap	1
43	9-0222	LOCKNUT, 5/16-24 Hex	2
44	9-0362	SCREW, ¼-20x5/8 Self Tap	2
45	9-0454	SCREW, 5/16-24x3-3/4 Hex Head Cap	1
46	9-0037	COTTER-PIN, 3/32x3/4	2
47	1-4158	BOLT, 3/8-24x1-3/4 Shoulder	2
48	9-0535	SCREW, 1/4-28x1 Hex Head Cap	1
49	9-0095	NUT, 1/4-28 Hex	1
50	9-0161	SCREW, 3/8-24x1-3/4 Hex Head Cap	1
51	1-0027	JAM NUT, 3/4-16	2
52	9-0155	NUT, 3/8-24 Hex	2
53	1-0935	WASHER, Spacer	5
54	9-0122	WASHER, 3/8 SAE	1
55	9-0053	LOCKWASHER, 1/4 Internal Tooth	1
56	9-0250	WASHER, 1/2 SAE	2
57	1-3848	WASHER, 1-1/4 OD	3
58	1-3849	SPACER	1
59	9-0055	WASHER, 1/4 SAE	1



NOTE: See pages 3.1-3.2 for pulley, washers & nut

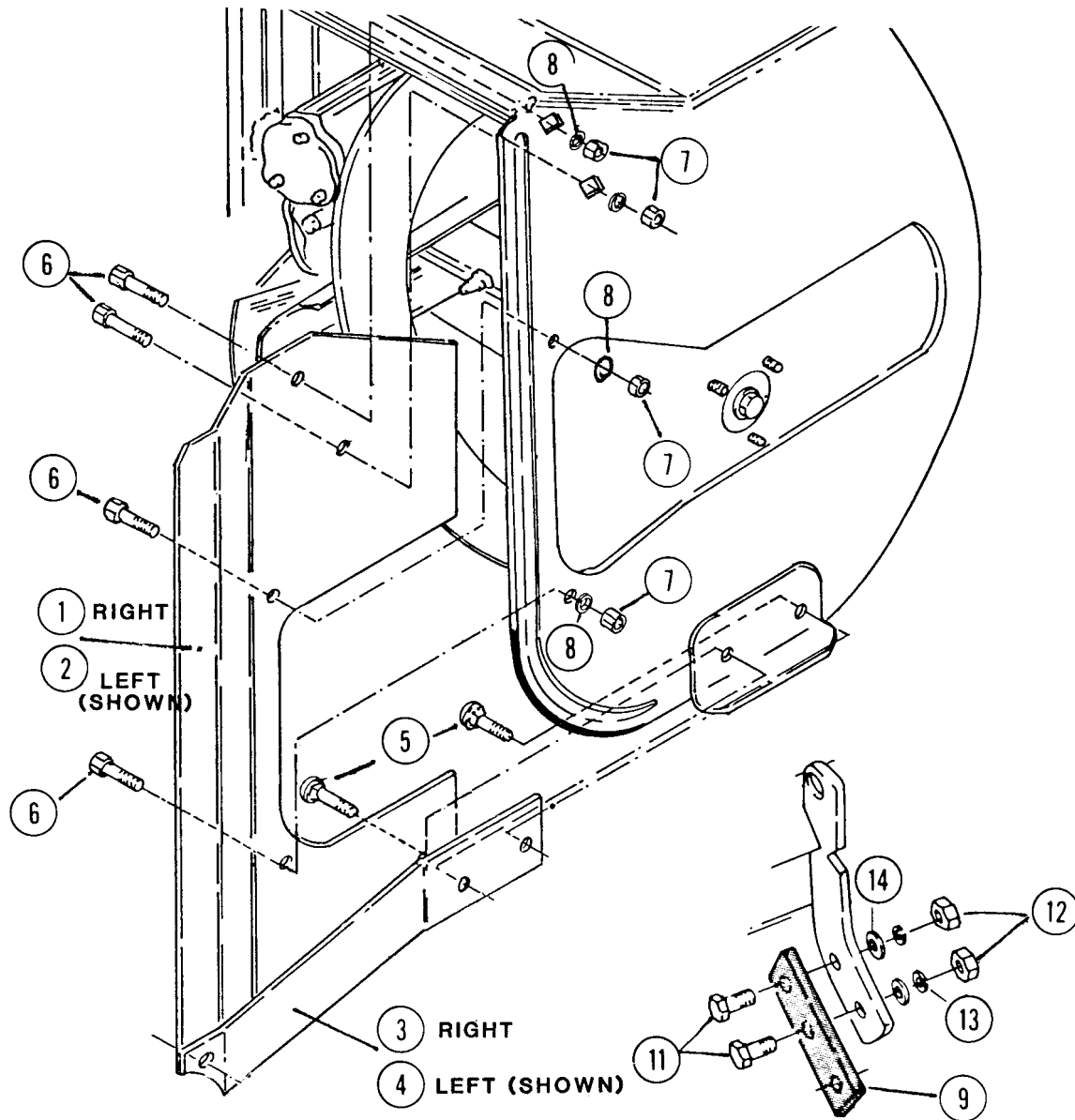
① SPINDLE ASSEMBLY

ITEM	PART NO.	DESCRIPTION	QTY
1	5-7295	ASSEMBLY, Spindle (includes following items)	1
2	4-9694	HOUSING, Spindle	1
3	1-2670	RING, Tolerance	1
4	1-0817	FITTING, Grease	1
5	1-2491	RING, Retaining	2
6	1-3313	BEARING, Ball	1
7	2-7620	SPINDLE	1

RIDER SNOW THROWER

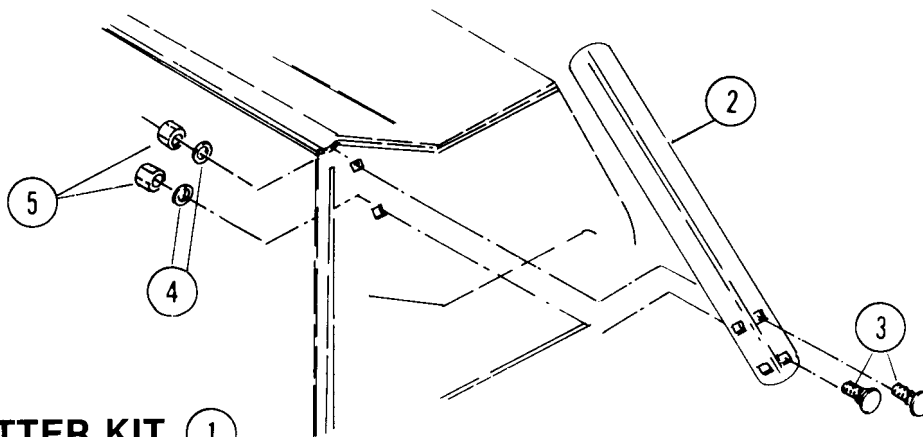
EXTENDER KIT 6-0514

REQUIRED for 33" & 42" RIDERS



ITEM	PART NO.	DESCRIPTION	QTY.
1	3-9999	EXTENDER, Right Side	1
2	3-5000	EXTENDER, Left Side	1
3	3-8022	BRACE, Right Side	1
4	3-8023	BRACE, Left Side	1
5	9-0208	BOLT, 5/16 x 1 "Carriage	4
6	9-0206	CAPSCREW, 5/16 x 3/4 Hex Hd.	8
7	9-0196	NUT, 5/16-18 Hex	10
8	9-0187	LOCKWASHER, 5/16 SPLIT	10
9	3-2212	EXTENDER, Support	2
10	1-4240	BELT, (Not Shown for 33")	1
11	9-0536	BOLT, 5/16 x 1-1/4	4
12	9-0537	NUT, 5/8-11 Hex	4
13	9-0333	LOCKWASHER, 5/8 Split	4
14	9-0183	WASHER, 5/8 Flat	4
	1-4239	INSTRUCTION, Installation (Not Shown)	1

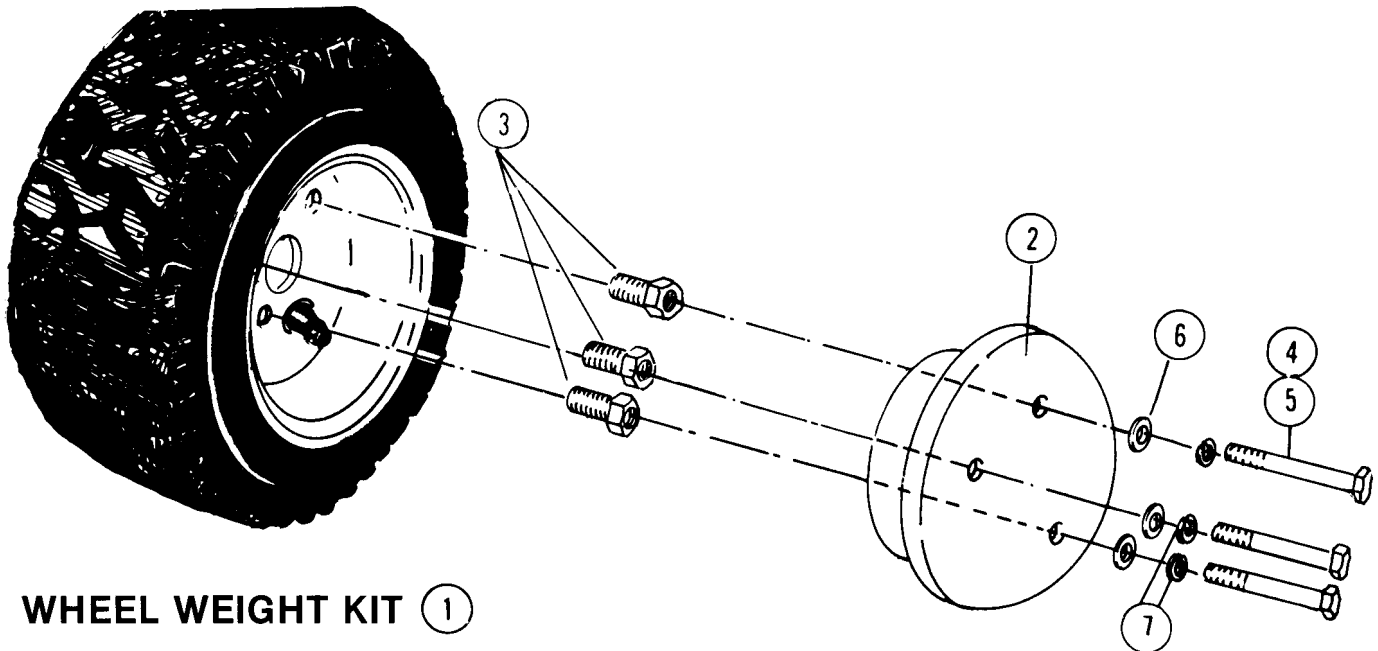
RIDER SNOW THROWER



DRIFT CUTTER KIT (1)

ITEM	PART NO.	DESCRIPTION	QTY
1	6-0472	KIT, Drift Cutter (includes following	1
2	3-7971	CUTTER, DRIFT	1
3	9-0001	BOLT, 5/16Cx3/4 Carriage	2
4	9-0187	LOCKWASHER, 5/16 Split	2
5	9-0196	NUT, 5/16 Hex	2

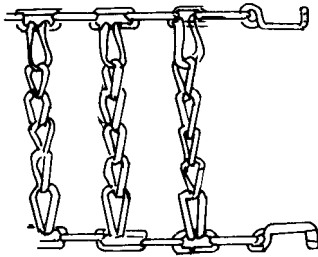
NOTE: ITEMS 3,4,5, part of 6-0502 Hardware Bag



WHEEL WEIGHT KIT (1)

ITEM	PART NO.	DESCRIPTION	QTY
1	6-0517	KIT, Wheel Weight (includes following)	1
2	1-9709	WEIGHT, Wheel	2
3	2-1858	STUD	6
4	9-0591	CAPSCREW, 3/8" C x 4-1/2 LONG	6
5	9-0810	CAPSCREW, 3/8" C x 3-1/4 LONG	6
6	9-0122	WASHER, 3/8 SAE	12
7	9-0118	LOCKWASHER, 3/8 SPLIT	6
8	1-4242	INSTRUCTION, Installation(not shown)	1

TIRE CHAIN KITS



KIT 6-0049 *for narrow (4.8 x 4-8) tires.

KIT 6-0357 *for wide (16 x 6.5-8) tires.

(Each kit includes two chains)

*Kit 6-0358 may also be used but 6-0049 recommended for snow

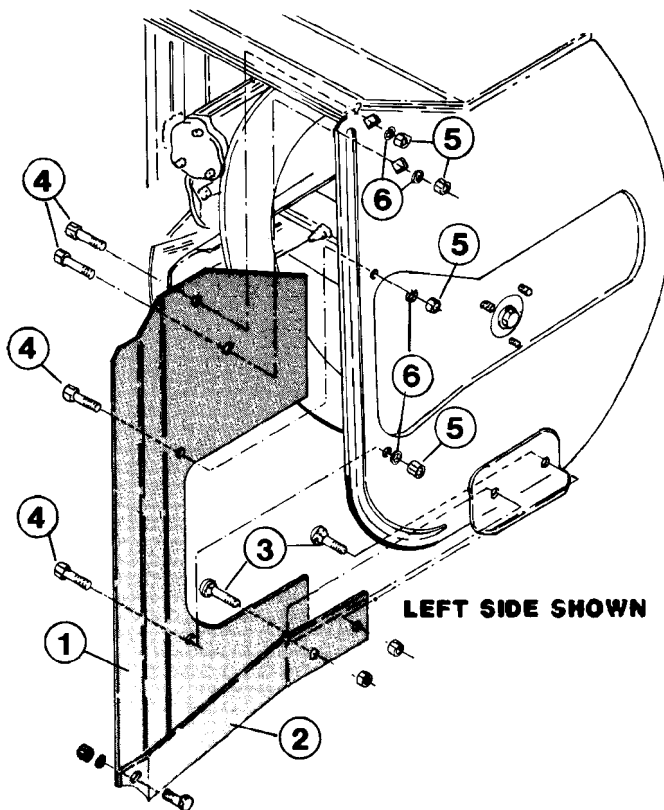


FIGURE -1 WIDTH EXTENDER COMPONENTS

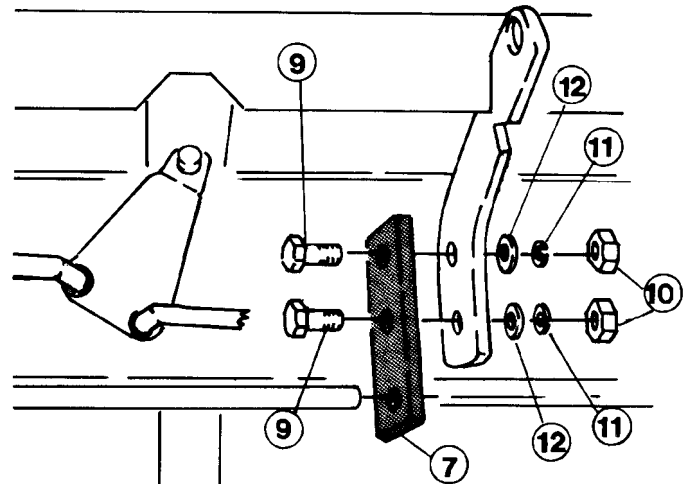


FIGURE -2 SUPPORT EXTENDER FOR 33"

60514 KIT PARTS LISTING

ITEM	PART NO.	DESCRIPTION	QTY.
1	3-9999	EXTENDER, RIGHT SIDE	1
-	3-5000	EXTENDER, LEFT SIDE	1
2	3-8022	BRACE, RIGHT SIDE	1
-	3-8023	BRACE, LEFT SIDE	1
3	9-0208	CARRIAGE BOLT, 5/16 x 1"	4
4	9-0206	CAPSCREW, 5/16 x 3/4 HEX HD.	8
5	9-0196	NUT, 5/16-18 HEX	10
6	9-0187	LOCKWASHER, 5/16 SPLIT	10
* 7	3-2212	EXTENDER, SUPPORT	2
* 8	1-4240	BELT (NOT SHOWN - FOR 33")	1
* 9	9-0536	BOLT, 5/8 x 1-1/4	4
*10	9-0537	NUT, 5/8-11 HEX	4
*11	9-0333	LOCKWASHER, 5/8 SPLIT	4
*12	9-0183	WASHER, 5/8 FLAT	4

PARTS MANUAL for

SNAPPER[®]

RIDER SNOW THROWER

ATTACHMENT #82099

& ACCESSORIES

McDonough Power Equipment
McDonough, GA • 30253

