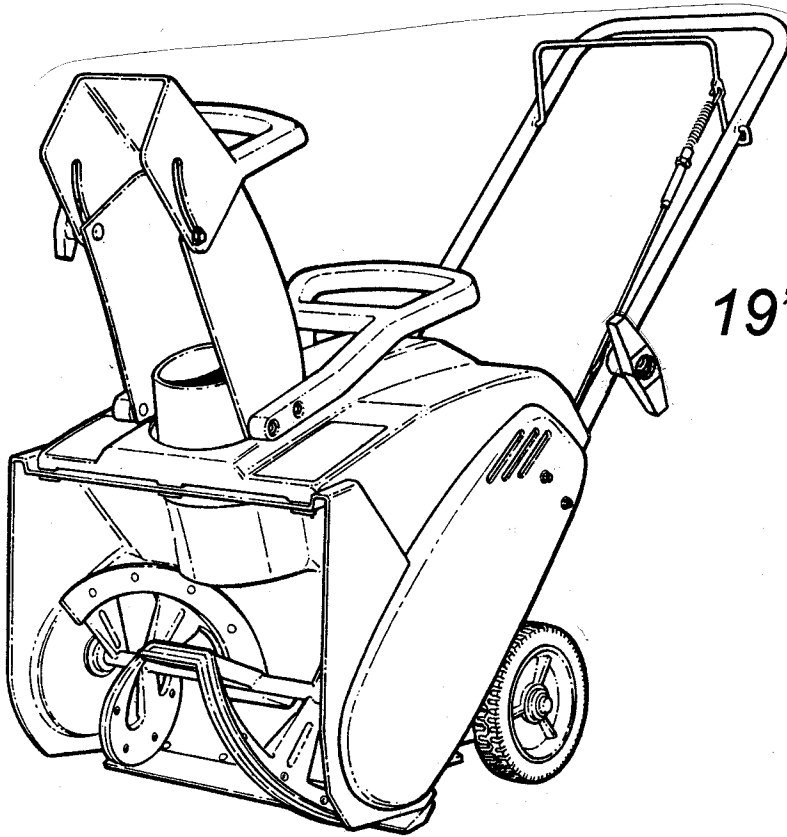


Lady GardenTM

BY Snapper



PARTS MANUAL for 19" L.G. SINGLE STAGE SNOW THROWER ELECTRIC START MODEL 80426

MODEL IDENTIFICATION

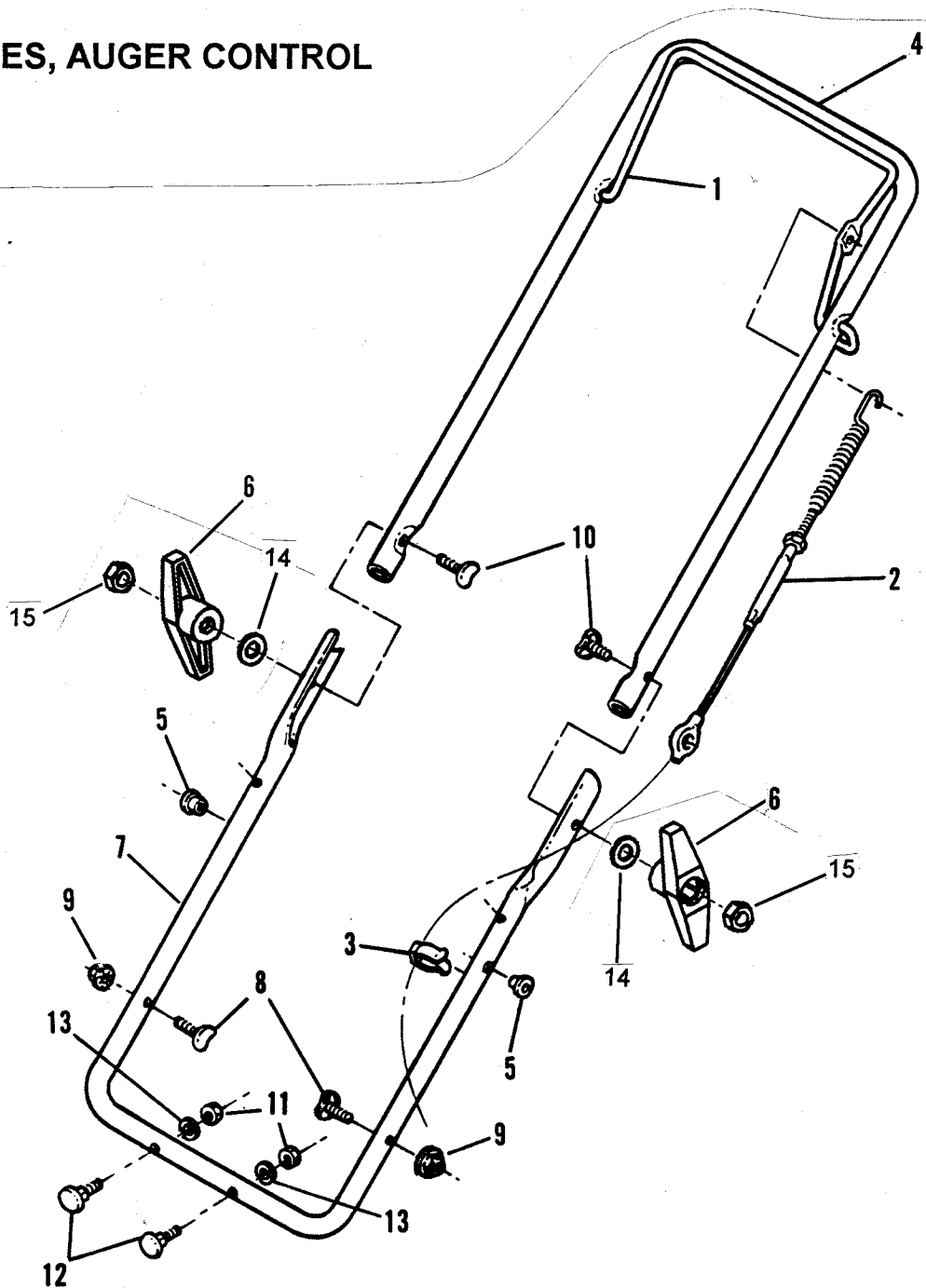
MODEL 80426: 19" Single Stage Snow Thrower 3 HP 110 Volt Electric Start

INDEX-GROUP

PAGE(S)

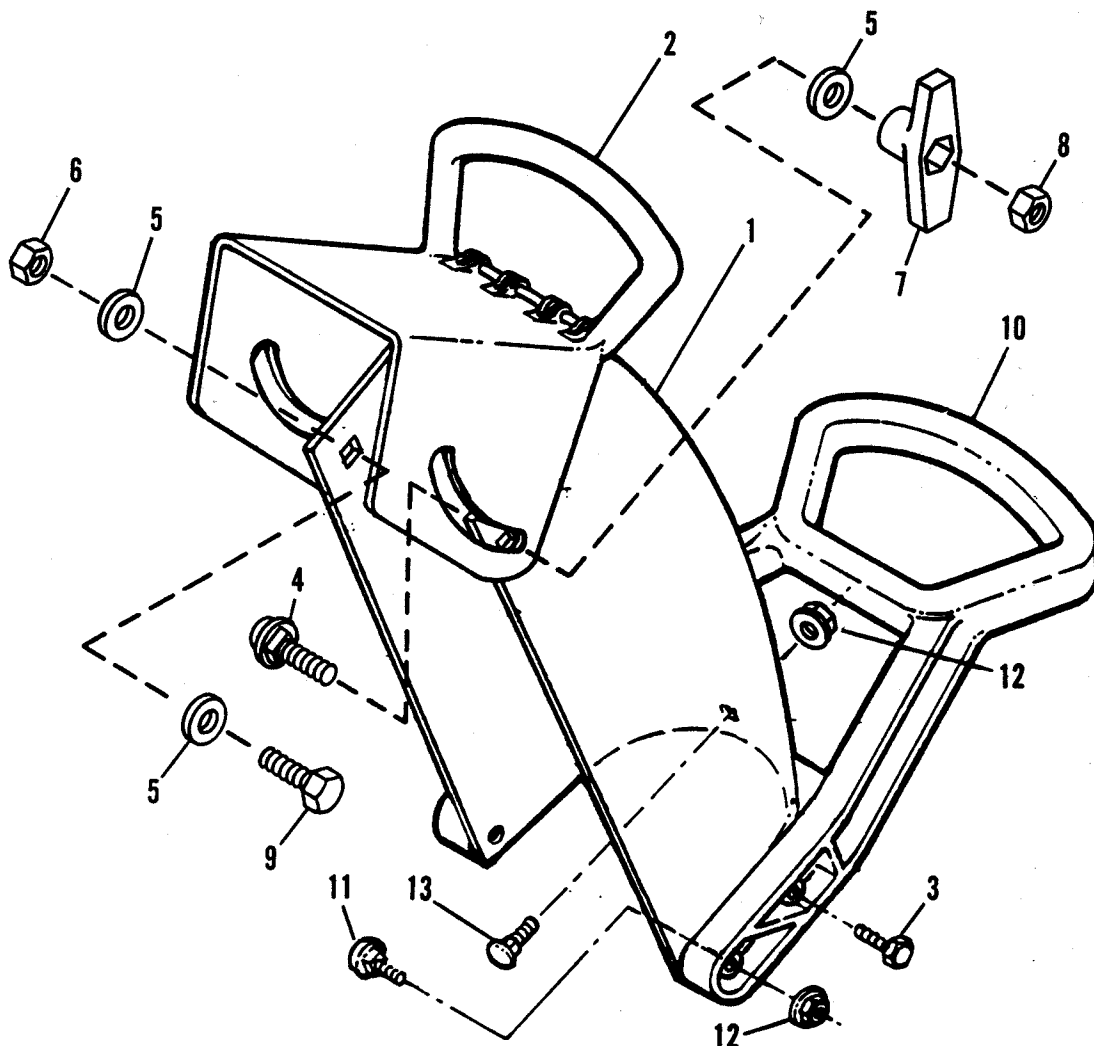
HANDLES, AUGER CONTROL	2
DISCHARGE CHUTE, DEFLECTOR, CONTROL HANDLE.....	3
AUGER HOUSING, DRIVE SYSTEM, CHASSIS	4, 5
COVERS, ENGINE	6, 7
DECALS	8, 9
ACCESSORIES	10

HANDLES, AUGER CONTROL



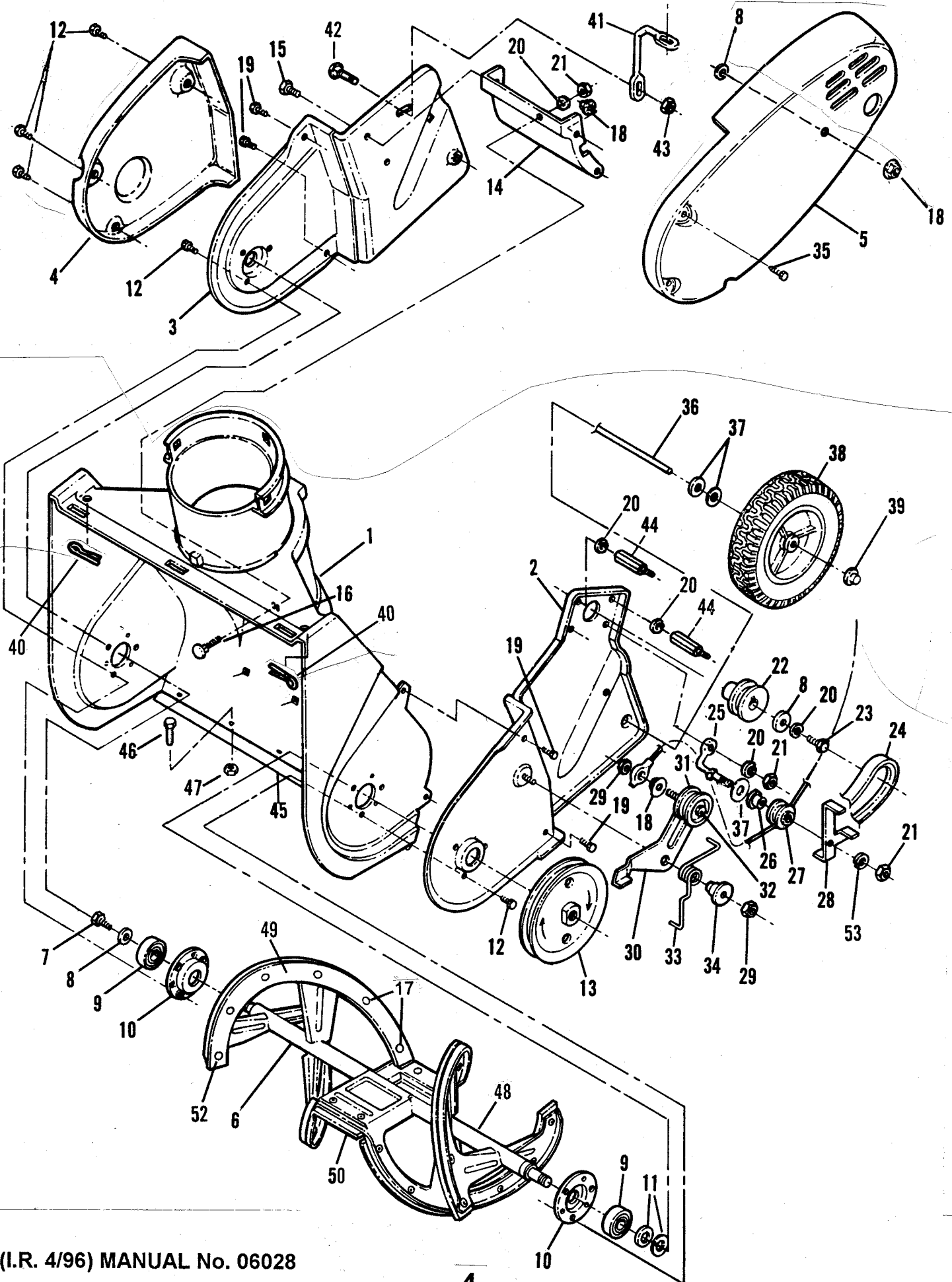
ITEM	PART NO.	DESCRIPTION
1	2-4645	BAIL, Drive Control
2	2-4662	CABLE, Drive Control
3	2-3813	CLIP, Wiring Harness
4	3-3496	HANDLE, Upper
5	9-1182	INSERT, Nylon (2)
6	1-6324	T-KNOB, Plastic (2)
7	3-3482	HANDLE, Lower
8	9-1190	BOLT, 5/16-18 x 1-3/8" Curved Head (2)
9	9-1070	NUT, 5/16-18 Hex Flange Lock (2)
10	9-1013	BOLT, 5/16-18 x 2" Curved Head (2)
11	9-0196	NUT, 5/16-18 Hex (2)
12	9-0577	BOLT, 5/16-18 x 1-1/2 Carriage (2)
13	9-0187	WASHER, 5/16 Split Lock (2)
14	9-1076	WASHER, 5/16 Flat (2)
15	9-1069	NUT, 5/16-18 Hex (2)

DISCHARGE CHUTE, DEFLECTOR, CONTROL HANDLE



ITEM	PART NO.	DESCRIPTION
1	5-2967	CHUTE, Discharge (Includes Decal #2-4845)
2	5-2975	DEFLECTOR, Chute (Includes Decal #2-4844)
3	9-0206	SCREW, 5/16-18 x 3/4" Hex Cap (2)
4	9-1072	BOLT, 5/16-18 x 1" Short Neck Carriage (Gr. 5)
5	9-1076	WASHER, 5/16 Flat (3)
6	9-1074	NUT, 5/16-24 Hex Center Lock
7	1-6324	T-KNOB, Plastic
8	9-1069	NUT, 5/16-18 Hex
9	9-1021	SCREW, 5/16-24 x 3/4" Hex Cap
10	2-4485	HANDLE, Chute Control
11	9-0978	BOLT, 5/16-18 x 1-1/4" Short Neck Carriage (Gr. 5) (2)
12	9-1070	NUT, 5/16-18 Hex Flange Lock, Grade 5 (3)
13	9-1097	BOLT, 5/16-18 x 3/4" Short Neck Carriage

AUGER HOUSING, DRIVE SYSTEM, CHASSIS

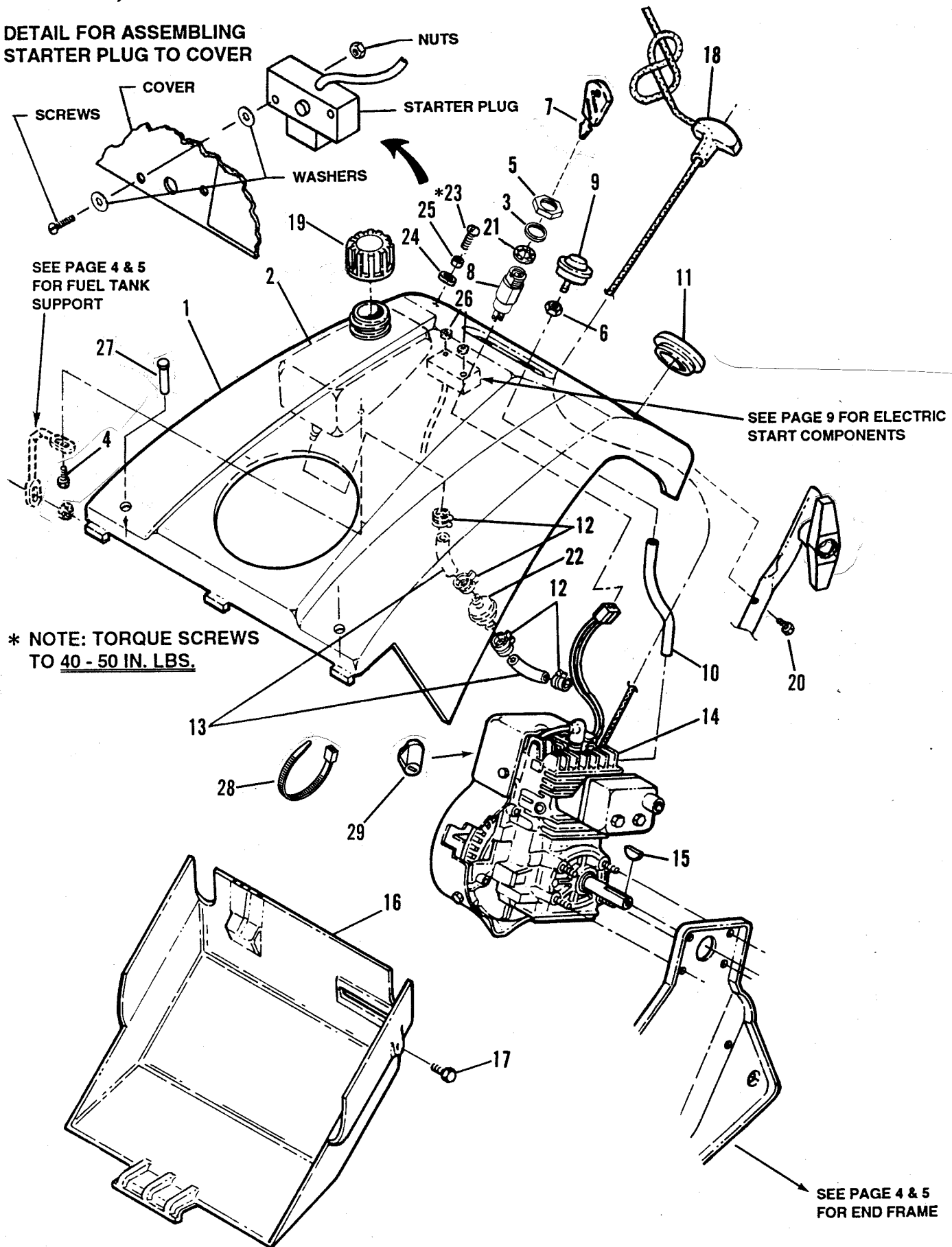


AUGER HOUSING, DRIVE SYSTEM, CHASSIS

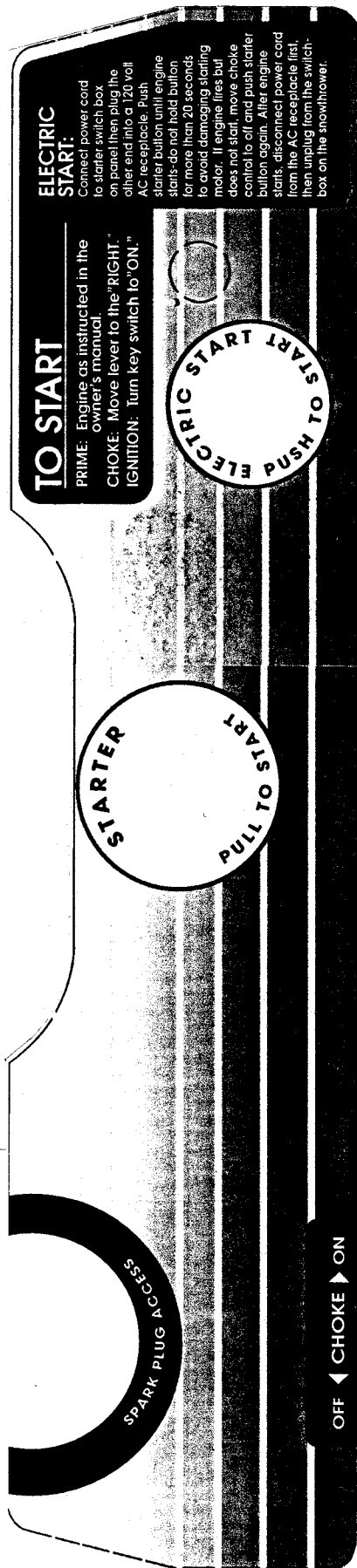
ITEM	PART NO.	DESCRIPTION
1	5-2969	ASSEMBLY, Auger Housing
2	5-2964	ASSEMBLY, End Frame (Left Hand)
3	4-1333	FRAME, End (Right Hand)
4	2-6117	COVER, Side
5	3-4327	GUARD, Belt Drive (Fits All Models. See Note Below)
6	5-2940	ASSEMBLY, Auger (Includes Items 48 Thru 52)
7	9-0361	SCREW, 5/16-18 x 5/8" Self-Tapping
8	1-4098	WASHER, 5/16 Flat (4)
9	1-4608	BEARING, Ball (2)
10	3-4385	RETAINER, Bearing (2)
11	1-0935	WASHER, 3/4 Shim
12	9-1012	SCREW, #10-24 x 1/2" Self-Tapping (Torx) (9)
13	1-8635	PULLEY
14	3-3457	BRACE, Engine
15	9-1084	SCREW, 1/4-20 x 3/8" Self-Tapping (2)
16	9-1097	BOLT, 5/16-18 x 3/4" Carriage (Gr. 5)
17	9-0307	SCREW, #10-24 x 1/2" (4)
18	9-1070	NUT, 5/16-18 Hex Flange Lock (4)
19	9-1081	SCREW, 1/4-15 x 1" Self-Tapping (4)
20	9-0187	WASHER, 5/16 Split Lock (7)
21	9-0196	NUT, 5/16-18 Hex (5)
22	2-2179	PULLEY, Engine
23	9-0233	SCREW, 5/16-24 x 3/4" Hex Cap (Gr. 5)
24	2-4618	V-BELT
25	2-4743	GUIDE, Cable
26	1-2306	BUSHING, Flange
27	2-4228	PULLEY, Nylon
28	3-3729	GUIDE, Belt
29	9-1067	NUT, 5/16-18 Hex Center Lock (2)
30	3-3695	BRACKET, Idler Pivot
31	2-4626	PULLEY, Idler
32	9-0669	SCREW, 5/16-18 x 1-3/4" Hex Cap (Gr. 5)
33	2-4621	SPRING, Idler Torsion
34	2-4620	BUSHING, Pivot
35	9-1195	SCREW, #10-16 x 3/4" Self-Tapping (3)
36	3-3692	AXLE, 3/8" Dia. Wheel
37	1-4098	WASHER, 3/8 Flat (4)
38	2-6160	WHEEL, 7 x 1.50 (2)
39	1-4667	NUT, 3/8 Push (2)
40	9-1597	PIN, Cotter 3/32 x 3/4" (2)
41	2-4852	SUPPORT, Fuel tank
42	9-0666	BOLT, 1/4-20 x 5/8" Short Neck Carriage (Gr. 5)
43	9-0372	NUT, 1/4-20 Hex (Nyloc)
44	2-7925	SPACER, Hex (3.69" Long) (2)
45	3-5948	BLADE, Scraper
46	9-1148	SCREW, 1/4-20 x 1/2" Machine (4)
47	9-1065	NUT, 1/4-20 Hex Flange Lock (4)
48	4-1139	STRUCTURE, Auger
49	1-8638	SHOE, Flite (4)
50	1-4612	SHOE, Center Flite (2)
51	9-1286	SCREW, #10-24 x 1/2" Self-Tapping (20)

COVERS, ENGINE

DETAIL FOR ASSEMBLING STARTER PLUG TO COVER



ITEM	PART NO.	DESCRIPTION
1	5-4282	COVER, Top (Includes Eyelet #2-4636)
2	5-2974	ASSEMBLY, Fuel Tank (Includes #2-4495 Cap)
3	1-6132	SPACER
4	9-1148	SCREW, 1/4-20 x 1/2" Machine
5	1-2685	NUT, 5/8-32 Hex
6	9-1065	NUT, 1/4-20 Hex Flange Lock
7	1-1138	KEY
8	1-7817	SWITCH, Ignition
9	1-4638	PRIMER
10	1-4639	HOSE, Primer
11	9-1183	PLUG, Hole
12	1-2222	CLAMP, Fuel Hose (2)
13	7-6272	HOSE, Fuel 8-1/2" Long
14	2-8598	ENGINE, 3 HP Tecumseh
15	1-0783	KEY, 5/32 x 5/8" Woodruff
16	2-4923	COVER, Bottom
17	9-0913	SCREW, #10-24 x 1/2" Hex Washer Face Self-Tap (2)
18	2-4478	HANDLE, Pull Rope
19	2-4495	CAP, Fuel Tank
20	9-1196	SCREW, #8-18 x 1-1/2" Self-Tapping (2)
21	9-0880	WASHER, 5/8 Internal Tooth Lock
22	1-4359	FILTER, In-Line
23	9-1246	SCREW, 1/4-20 x 3/4" Self-Tapping (Torx)
24	2-7910	ISOLATOR, Fuel Tank/Cover
25	2-7911	SPACER
26	9-0010	WASHER, #10 Flat (4) (Electric Start Models Only)
27	9-1708	PIN, Clevis 1/4 x 5/8" (2)
28	1-2080	CABLE TIE
29	2-8599	KNOB, Red (For Engine Choke Lever)



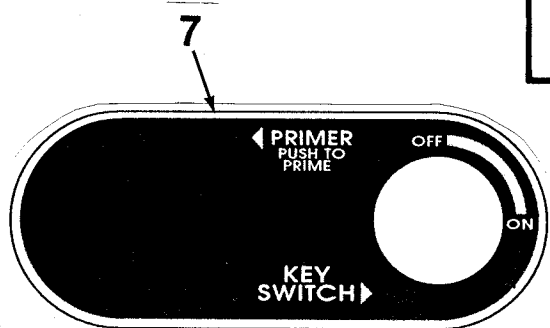
SAFETY INSTRUCTIONS TO PREVENT INJURY

1. Read owners manual for operating & safety instructions.
2. Observe all labels and instructions.
3. Do not defeat safety features of controls. They are for your protection.
4. Stop engine. Wait for all moving parts to stop. Remove spark plug wire before unclogging or servicing machine.
5. Never allow children to operate equipment. Never allow adults to operate equipment without proper instruction.
6. Keep area of operations clear of all persons, especially children.
7. Never direct discharge at bystanders or allow anyone in front of unit.
8. Keep machine properly maintained and serviced with all shields, guards, or protective devices in place.

! DANGER

ALWAYS SHUT OFF ENGINE BEFORE UNCLOGGING THE DISCHARGE CHUTE.

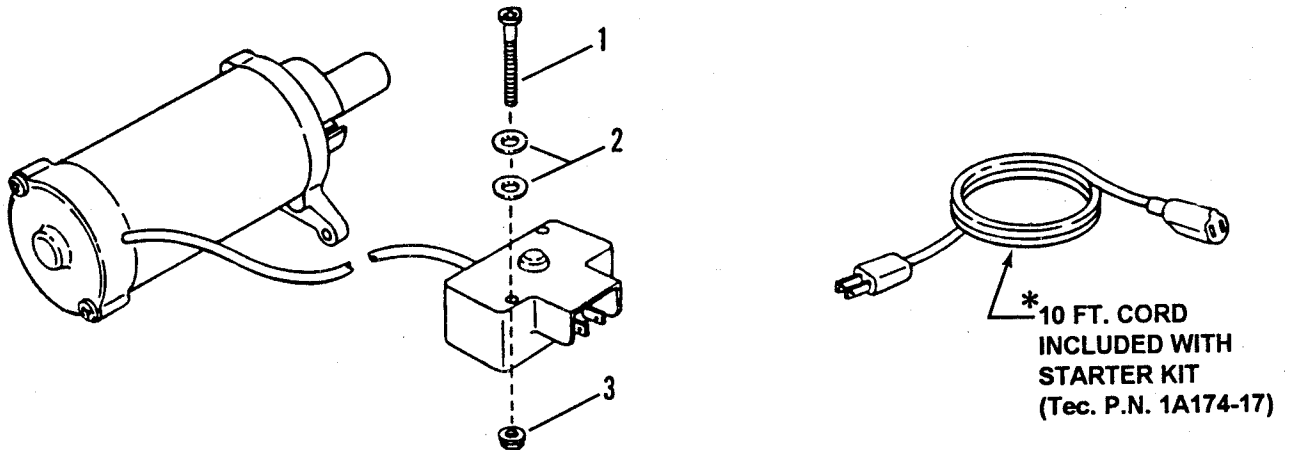
AVOID INJURY FROM ROTATING AUGER. KEEP HANDS, FEET, AND CLOTHING AWAY.



ITEM	PART NO.	DESCRIPTION
1	3-6572	DECAL, Panel/Instructions- Electric Start
2	3-6574	DECAL, Model/I.D.
3	2-4845	DECAL, Safety Instruction
4	2-4844	DECAL, Danger, Chute/Deflector
5	3-6570	DECAL, Lady Garden Logo (Large)
6	3-6571	DECAL, Lady Garden Logo (Small)
7	3-6573	DECAL, Instructions, Primer/Key Switch

ACCESSORIES

ELECTRIC START KIT



ITEM	PART NO.	DESCRIPTION
--	1-4769	KIT, Electric Start (Tecumseh)
1	9-0866	SCREW, #10-24 x 1-3/4" Phillips Pan Head (2)
2	9-0623	NUT, #10-24 Hex Flange Lock (2)
3	-	CORD, 10 Foot Extension
4	-	MOTOR, Starter
5	-	SCREW, 1/4-20 x 7/8" Hex Washer Machine (2) (Not Shown)

***Parts Available Only From Engine Manufacturer.**

19" FLITE SHOE KIT

ITEM	PART NO.	DESCRIPTION
--	6-1213	KIT, Flite Shoe (Includes Items 1 Thru 4)
1	1-8638	SHOE, 19" Flite Auger
2	1-4612	SHOE, Flite Center
3	9-1148	SCREW, 1/4-20 x 1/2" Machine (4)
4	9-0372	NUT, 1/4-20 Hex Center Lock, Grade B or 5 (24)

19 SCRAPER BLADE KIT

ITEM	PART NO.	DESCRIPTION
--	6-1236	KIT, 19" Blade (Includes Items 1, 2, 3)
1	2-8426	BLADE, 19" Blade
2	9-1148	SCREW, 1/4-20 x 1/2" Machine (4)
3	9-0372	NUT, 1/4-20 Hex Center Lock, Grade B or 5 (4)

Lady GardenTM

BY Snapper

PARTS MANUAL for

*19" L.G. SINGLE STAGE
SNOW THROWER
ELECTRIC START
MODEL 80426*