

Parts Manual for

**BLACK HAWK™**

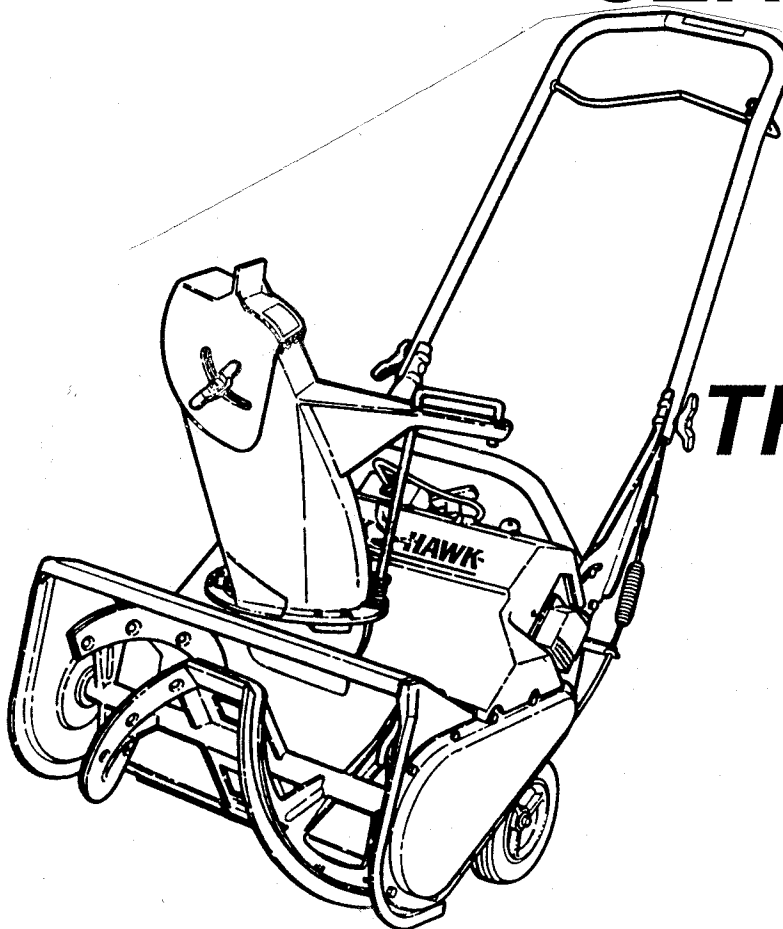
By Snapper

**MODELS: BH3200, BH3200E,  
BH3203, & BH3203E**

**SERIES 0 & 3**

**SINGLE  
STAGE  
SNOW**

**THROWER**

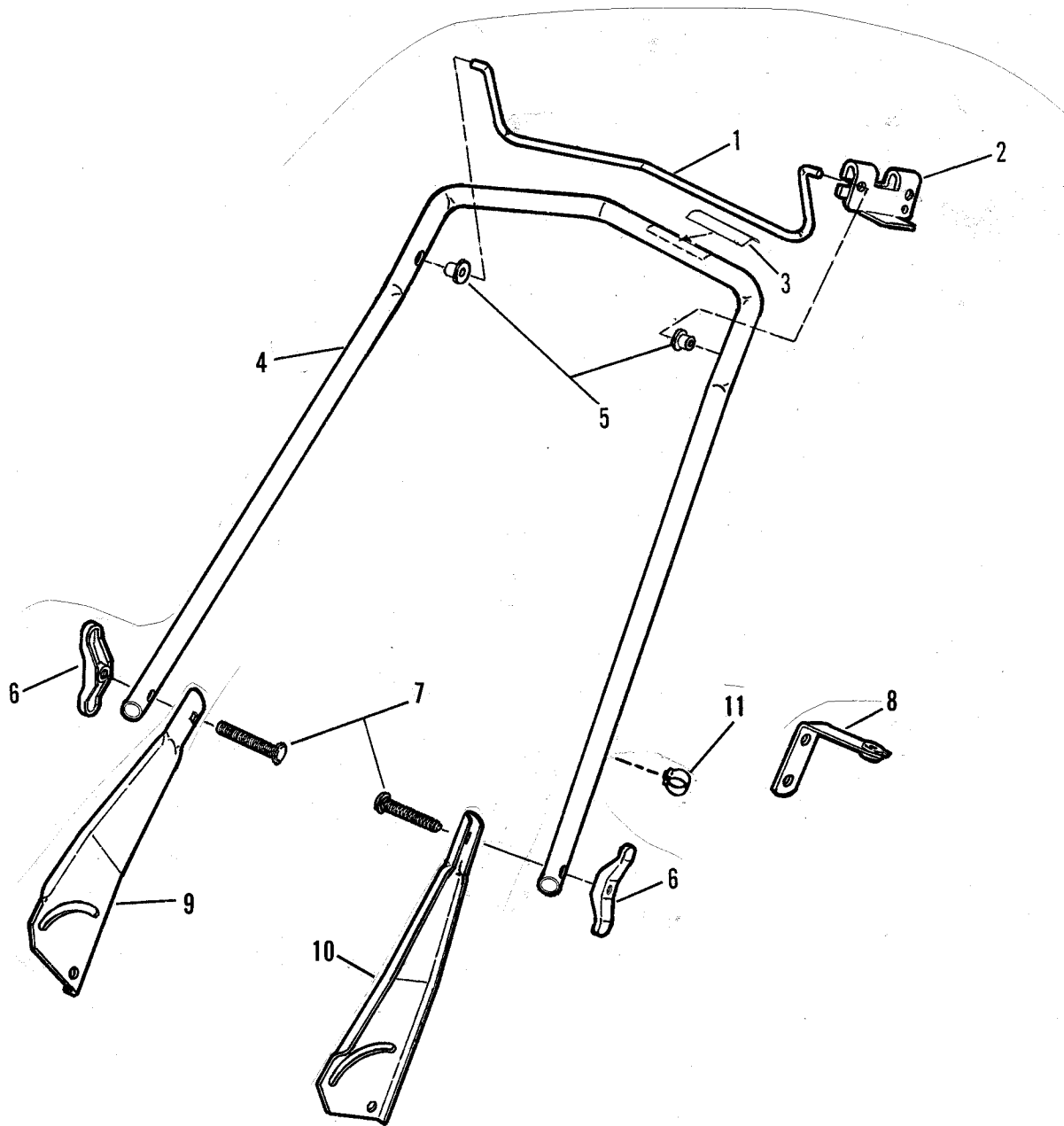


**BLACK HAWK™**

By Snapper

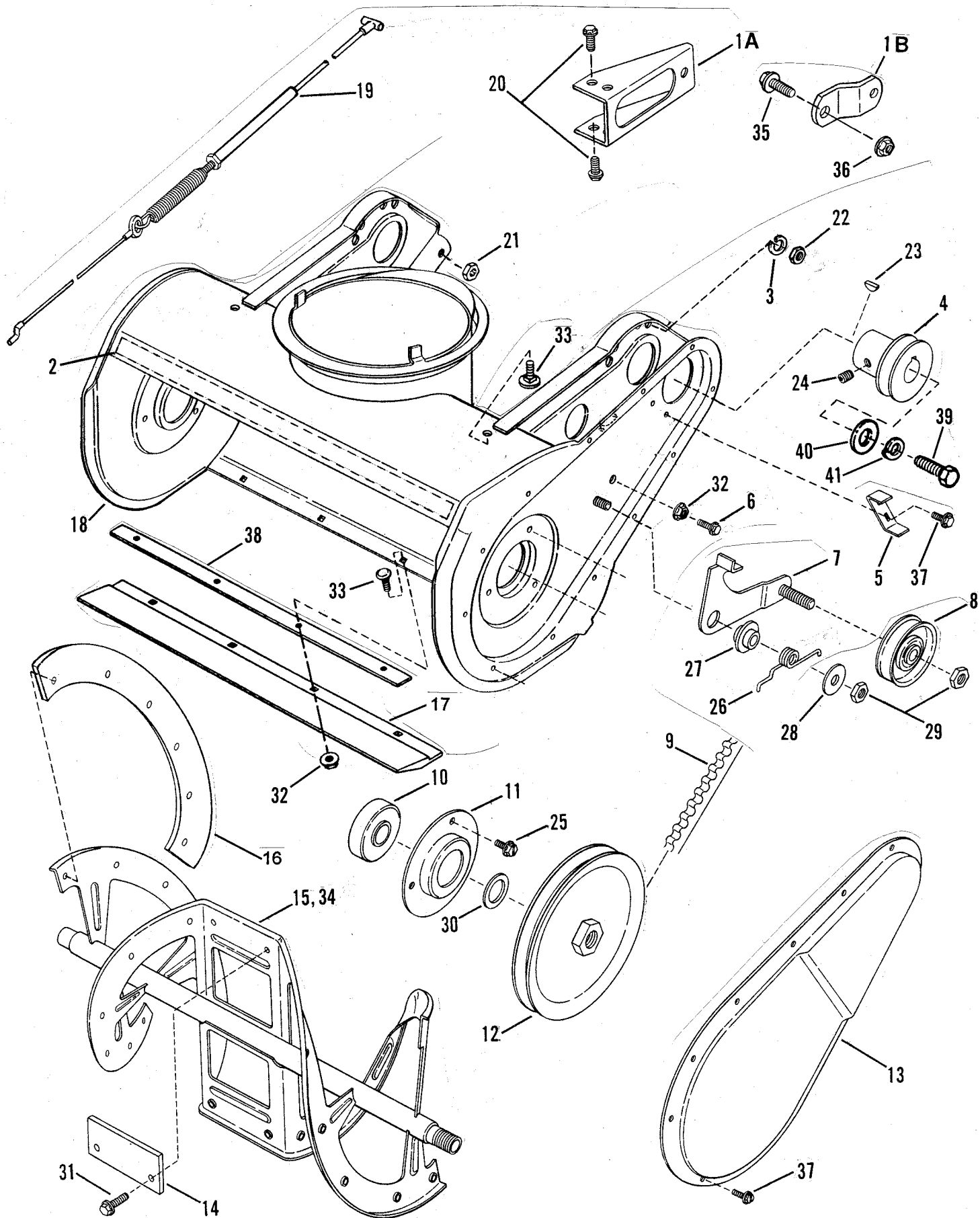
MANUAL No. 06015 (I.R. 5/96)

# HANDLES, BLADE CONTROL



<b>ITEM</b>	<b>PART NO.</b>	<b>DESCRIPTION</b>
1	1-7072	CONTROL, Auger
2	3-3904	CLIP
3	2-7449	DECAL, Auger Control
4	3-2917	HANDLE, Upper
5	1-4343	BUSHING (2)
6	1-6367	NUT, 1/4-20 Wing (2)
7	9-1083	BOLT, 1/4-20 x 2" Carriage, Grade 5 (2)
8	5-1560	ASSEMBLY, Bracket & Bushing
9	2-8065	HANDLE, Lower (Right Hand)
10	2-8064	HANDLE, Lower (Left Hand)
11	2-3813	CLAMP, Cable

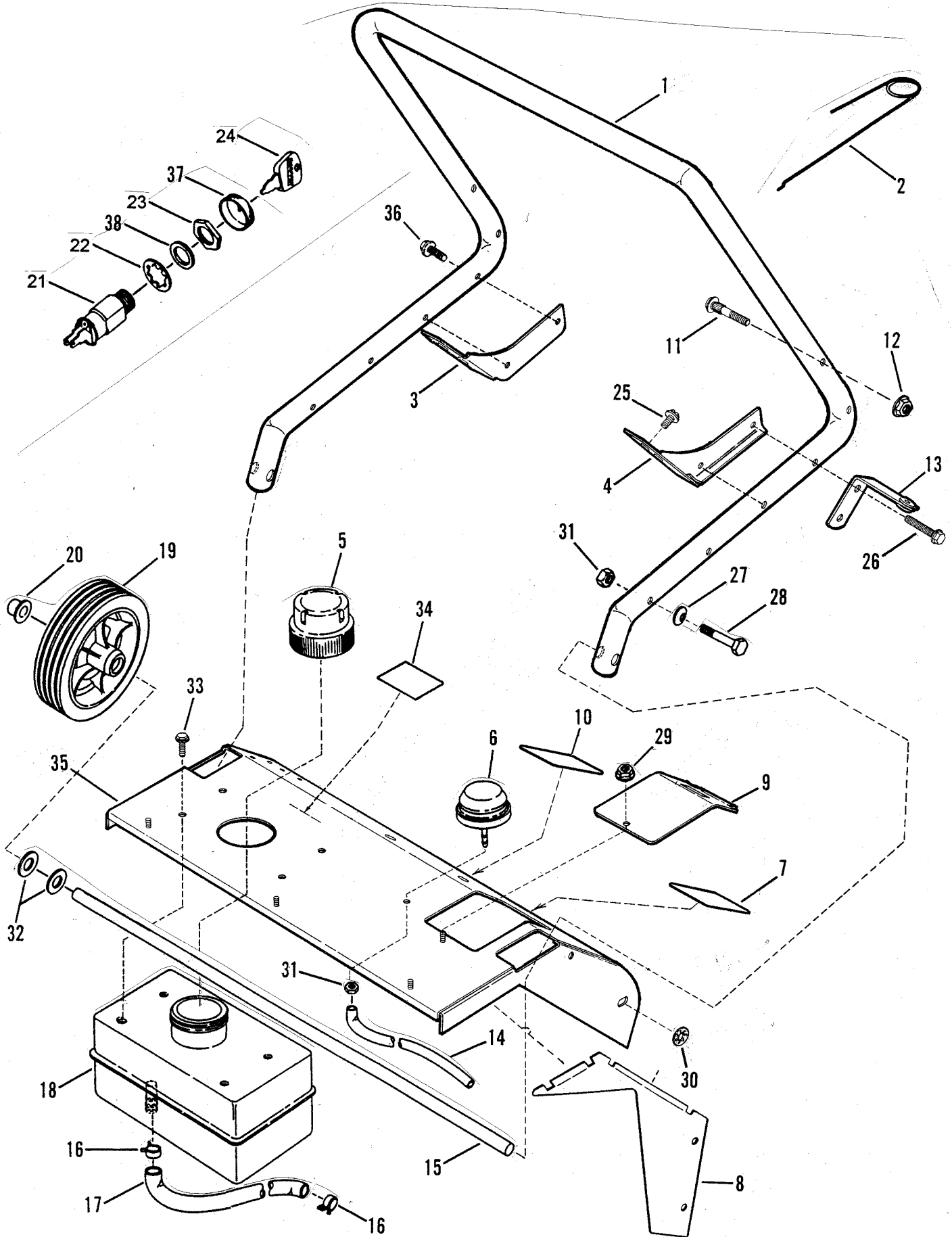
# COLLECTOR HOUSING, BELTS, PULLEYS, AUGER



# COLLECTOR HOUSING, BELTS, PULLEYS, AUGER

ITEM	PART NO.	DESCRIPTION
1A	2-8063	BRACE, Engine (Early Production Models)
1B	3-4130	BRACE, Engine (Later Production Models)
2	2-7443	DECAL, BLACKHAWK 3 HP
-	2-7451	DECAL, BLACKHAWK 3 HP (Electric Start)
3	9-0187	WASHER, 5/16 Split Lock
4	2-8363	PULLEY, Engine
5	3-2345	GUIDE, Belt
6	9-1075	SCREW, #10-24 x 5/8" Self-Tapping
7	5-1506	ASSEMBLY, Idler Arm
8	1-4722	PULLEY, Idler Arm
9	2-9604	BELT, Auger
10	1-4608	BEARING, Auger (2)
11	3-2346	RETAINER, Bearing
12	1-8635	PULLEY
13	1-9753	COVER, Belt
14	1-4612	SHOE, Flite (2)
15	2-8067	AUGER
16	2-9565	SHOE, Flite (4)
17	2-8427	BLADE, Scraper
18	2-8068	ASSEMBLY, Blower (Early Production Models)
--	4-1605	ASSEMBLY, Blower (Later Production Models)
19	1-8796	CABLE, Clutch
20	9-0302	SCREW, 1/4-20 x 3/8" Self-Tapping (2)
21	9-0372	NUT, 1/4-20 Hex Center Lock, Grade 5 or B (4)
22	9-1069	NUT, 5/16-18 Hex, Grade 5 (4)
23	1-0008	KEY, #6 x 5/8" Woodruff
24	9-0471	SCREW, 1/4-20 x 5/16 Set (2)
25	9-0981	SCREW, #10-32 x 1/4" Self-Tapping (6)
26	1-4920	SPRING, Idler Brake
27	1-4919	SPACER, Bearing
28	9-1076	WASHER, 5/16 Flat
29	9-1067	NUT, 5/16-18 Hex Center Lock, Grade B (2)
30	1-0935	WASHER, 3/4 Flat
31	9-1286	SCREW, #10-24 x 1/2" Self-Tapping (Sems) (28)
32	9-1079	NUT, #10-24 Hex Flange Lock (5)
33	9-1283	BOLT, #10-24 x 5/8" Flat Head Carriage (8)
34	5-2309	ASSEMBLY, Auger (Includes Items 14 Thru 16 & 31)
35	9-0584	BOLT, 1/4-20 x 1/2" Hex Flange Lock, Grade 5 (2)
36	9-0477	NUT, 1/4-20 Hex Flange Top Lock (2)
--	6-0631	KIT, Rubber Blade Replacement (Includes Items 14 & 16)
37	9-1012	SCREW, #10-32 x 3/8" Self-Tapping (Torx)
38	2-8312	BLADE, Wear Indicator
39	9-0233	SCREW, 5/16-24 x 3/4, Hex Head Cap, Grade 5
40	1-4098	WASHER, 5/16 Flat
41	9-0187	WASHER, 5/16 Split Lock

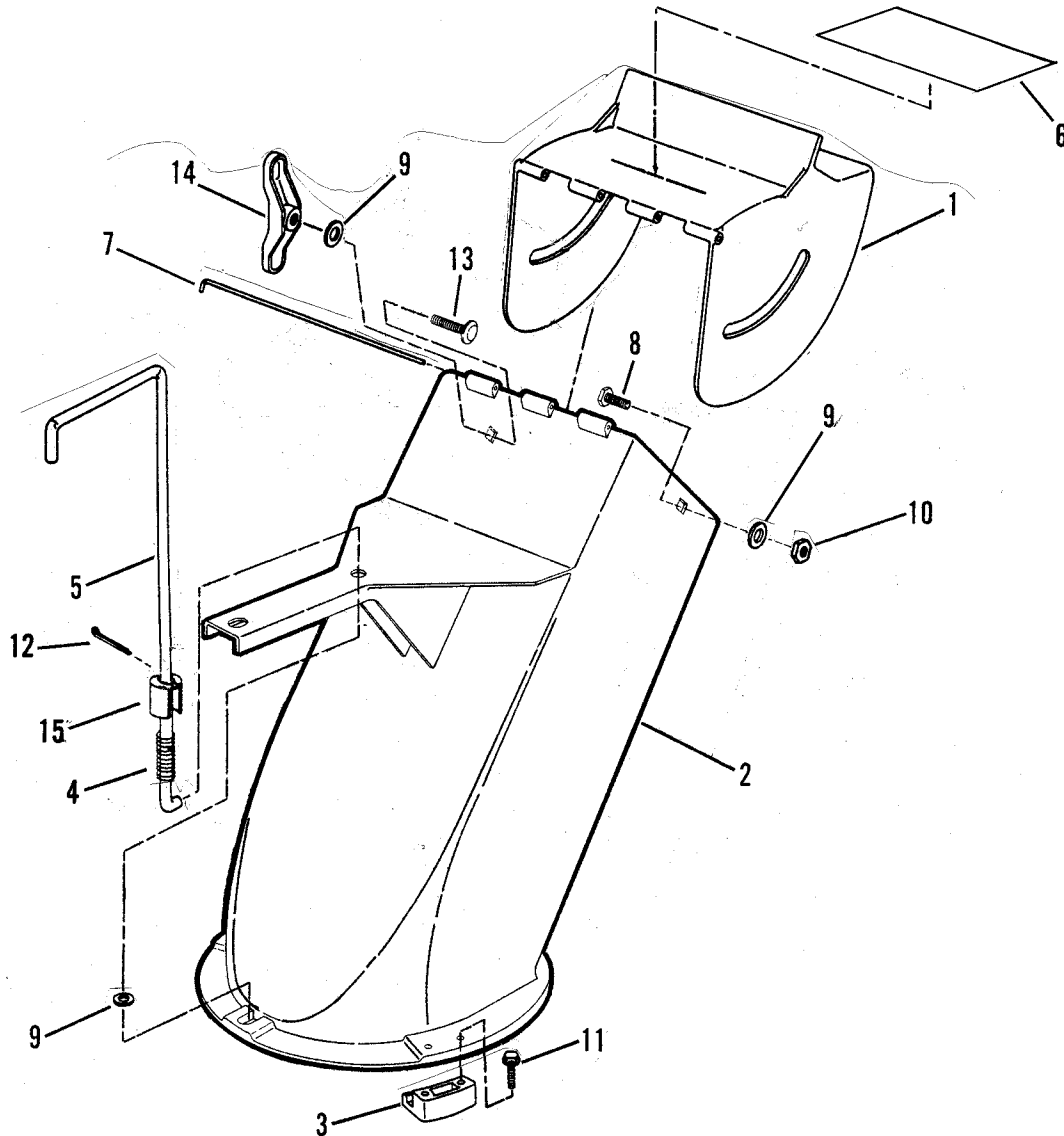
# CONTROL PANEL, LOWER HANDLE



# CONTROL PANEL, LOWER HANDLE

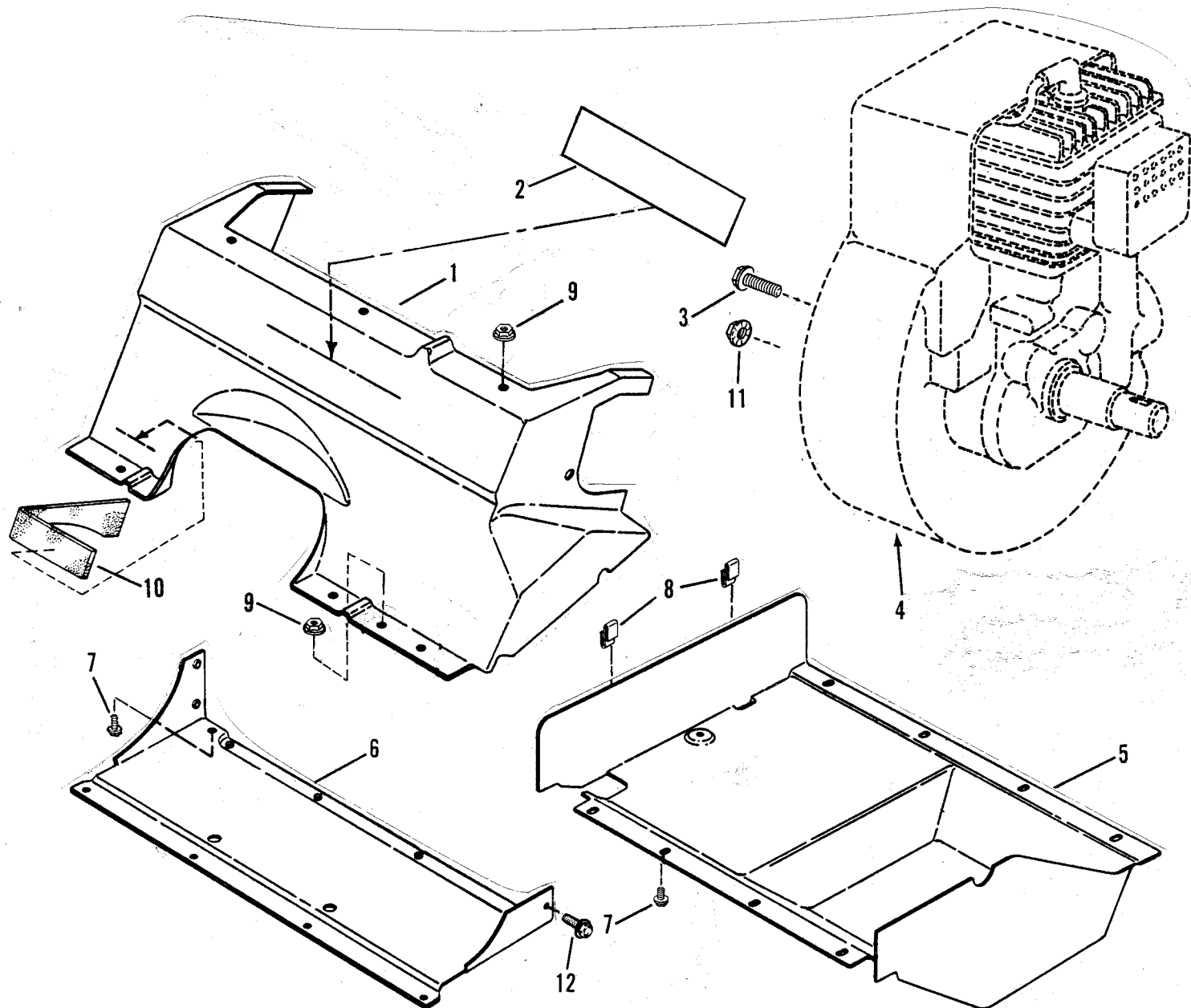
ITEM	PART NO.	DESCRIPTION
1	3-6165	HANDLE, Lower
2	1-4918	CONTROL, Choke
3	3-8109	HANDLE, Brace (Right Hand)
4	3-8110	HANDLE, Brace (Left Hand)
5	1-4636	CAP, Fuel Tank
6	1-4638	PRIMER, Fuel
7	2-7445	DECAL, Choke
8	3-2943	BAFFLE, Left Hand
9	2-8062	COVER, Access Hole
10	2-7450	DECAL, Controls
11	9-0947	BOLT, 1/4-20 x 1-3/8" Carriage, Grade 5 (4)
12	9-1065	NUT, 1/4-20 Hex Flange Lock (4)
13	5-1560	ASSEMBLY, Bracket & Bushing
14	1-4639	HOSE, Primer
15	3-2366	AXLE
16	1-2222	CLAMP, Fuel Line (2)
17	3-2365	LINE, Fuel
18	1-9736	TANK, Fuel
19	2-7446	WHEEL (2)
20	9-1135	NUT, 3/8 Push (2)
21	1-5211	SWITCH, Ignition (Includes Items 22 & 23)
22	9-0880	WASHER, 5/8 Internal Tooth Lock
23	1-2685	NUT, 5/8-32 Hex (Special)
24	1-1138	KEY, Ignition (2)
25	9-1080	SCREW, #10-32 x 1/4" Self-Tapping (4)
26	9-0896	SCREW, 1/4-20 x 1-3/8" Self-Tapping (4)
27	1-4645	WASHER, 1/4 Curved (4)
28	9-0825	SCREW, 1/4-20 x 1-1/4" Hex Head Cap (Gr. 5) (4)
29	9-1079	NUT, #10-24 Hex Flange Lock
30	1-2485	RETAINER, 1/4 Bolt (4)
31	9-1099	NUT, 1/4-20 Hex Center Lock
32	9-1149	WASHER, 3/8 Flat (4)
33	9-1081	SCREW, 1/4-15 x 3/4" Self-Tapping (4)
34	2-7444	DECAL, Fuel Mix Chart
35	4-9732	WELDMENT, Handle/Panel
36	9-0911	SCREW, 1/4-20 1-1/4" Self-Tapping
37	2-3506	BEZEL
38	1-6132	SPACER

# DISCHARGE CHUTE



ITEM	PART NO.	DESCRIPTION
1	2-8344	DEFLECTOR, Discharge
2	2-8345	CHUTE
3	1-4915	RETAINER, Chute to Housing (3)
4	1-2893	SPRING, Release Rod
5	1-6329	ROD, Release
6	2-7448	DECAL, Danger
7	2-8343	PIN, Wire Hinge
8	9-1021	SCREW, 5/16-24 x 3/4" Hex Head Cap, Grade 5 (2)
9	9-1076	WASHER, 5/16 Flat (4)
10	9-1074	NUT, 5/16-24 Hex Center Lock, Grade B (2)
11	9-1075	SCREW, #10-24 x 5/8" Hex Head Cap, Grade 5 (6)
12	9-1082	PIN, 3/32 x 3/4" Cotter
13	9-1097	BOLT, 5/16-18 x 3/4" Carriage, Grade 5
14	1-6368	NUT, 5/16-18 Wing
15	3-2919	STOP, Handle

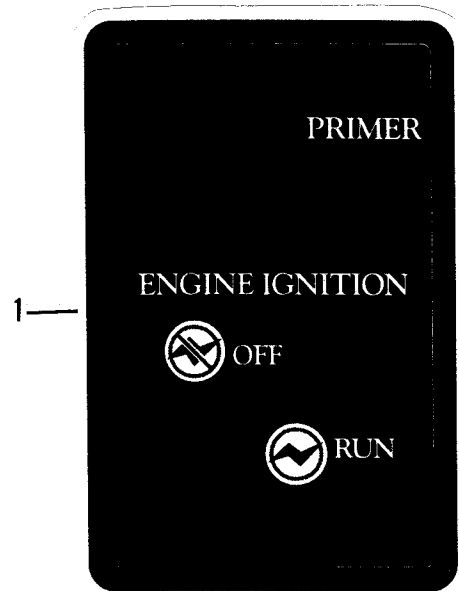
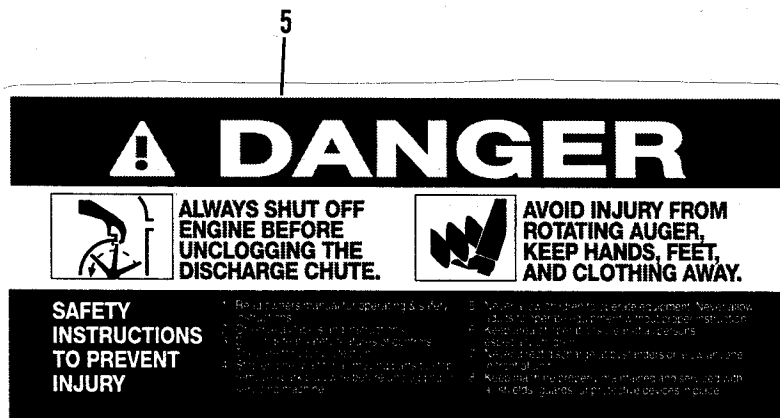
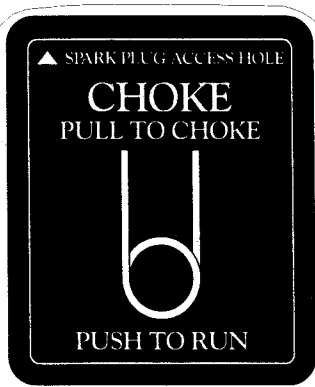




**TECUMSEH ENGINE**

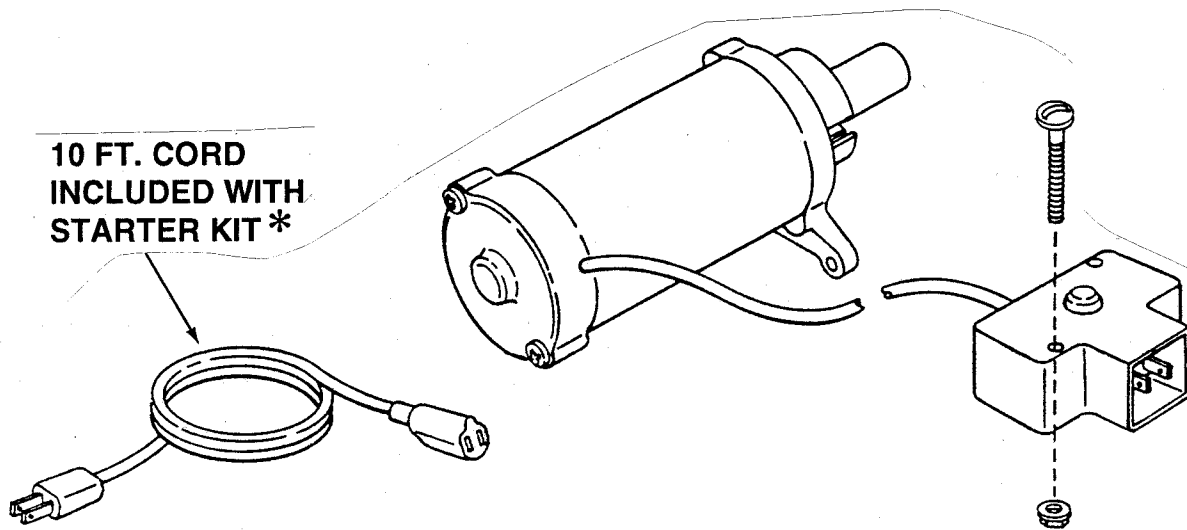
ITEM	PART NO.	DESCRIPTION
1	2-7401	COVER, Top
2	2-9371	LOGO, BLACKHAWK
3	9-0676	BOLT, 1/4-20 x 3/8" Hex Flange Lock, Grade 5
4	---	ENGINE, Tecumseh (2 Cycle)
-	---	ENGINE, Tecumseh (2 Cycle) (Electric Start)
5	1-9980	COVER, Bottom
6	2-8066	BRACE
7	9-1012	SCREW, #10-32 x 1/4" Self-Tapping (10)
8	1-9362	CLIP, "S" (2)
9	9-1079	NUT, #10-24 Hex Flange Lock (7)
10	1-9350	SEAL, Foam
11	9-0585	NUT, 5/16-18 Hex Flange Lock, Grade 5
12	9-0913	SCREW, #10-24 x 1/2" Self-Tapping (Torx)

# DECALS



ITEM	PART NO.	DESCRIPTION
1	2-7450	DECAL, Ignition
2	2-7449	DECAL, Auger Control
3	2-7444	DECAL, Fuel Mix
4	2-7445	DECAL, Choke
5	2-7448	DECAL, Danger
6	2-7443	DECAL, BLACKHAWK
7	2-7451	DECAL, BLACKHAWK (Electric Start)

**TECUMSEH STARTER ASSEMBLY SHOWN**



**10 FT. CORD  
INCLUDED WITH  
STARTER KIT \***

ITEM	PART NO.	DESCRIPTION
—	6-0608	KIT, Electric Start (Tecumseh Engines)

**\*Parts Available Only from Engine Manufacturer.**

Parts Manual for



**MODELS: BH3200, BH3200E,  
BH3203, & BH3203E  
SERIES 0 & 3  
SINGLE  
STAGE  
SNOW  
THROWER**

IT IS THE POLICY OF BLACKHAWK TO IMPROVE ITS PRODUCTS WHENEVER IT IS POSSIBLE AND PRACTICAL TO DO SO. WE RESERVE THE RIGHT TO MAKE CHANGES OR ADD IMPROVEMENTS AT ANY TIME WITHOUT INCURRING ANY OBLIGATION TO MAKE SUCH CHANGES ON PRODUCTS MANUFACTURED PREVIOUSLY.

