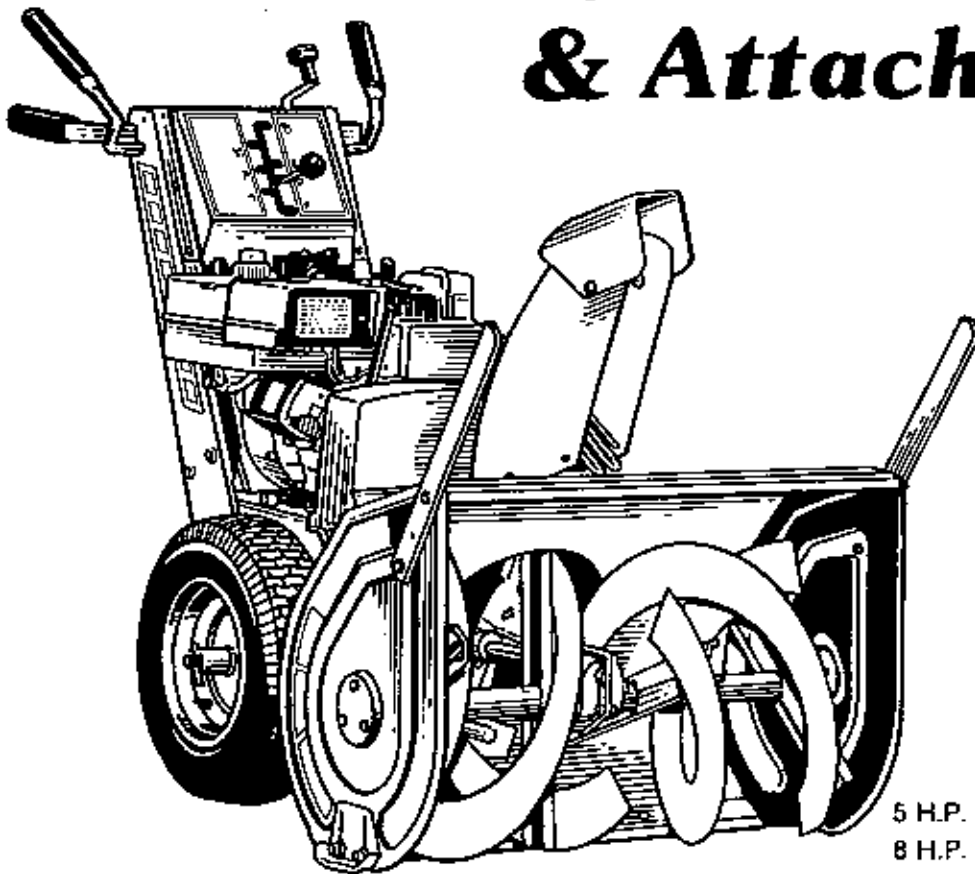


Parts Manual Models 560, 860, 870 & 1070 Snowthrowers & Attachments



TP-1122-02
11/88

5 H.P. 24 INCH (60 cm) WIDTH
8 H.P. 24 INCH (60 cm) WIDTH
8 H.P. 28 INCH (70 cm) WIDTH
10 H.P. 28 INCH (70 cm) WIDTH

Simplicity®

Product Identification:

When ordering parts, keep your products serial number and manufacturer's number in mind. Variations may occur in a part between early and later model products, causing the product serial number to be listed in the parts description whenever these variations occur.

Record your I.D. numbers here for quick, future reference.

Product Mfg. No. _____ S/N _____ Mower Mfg. No. _____ S/N _____

Attention:

Standard torques appear in a chart at the end of the manual, while important individual torques are given on specific parts drawings.

CRITICAL and MAJOR notations point out important facts or instructions which relate to personal safety and proper machine operation. Any CRITICAL notation **C** which may appear in this book, pinpoints characteristics which, if not properly followed, can create a safety hazard. Any MAJOR notation **M** which may appear in this book, marks characteristics which, if not properly followed, may result in operating failure, shortened product life, or greatly reduced quality of the unit.

For your convenience, assembly notes are included in parts drawings to assist in repair and assembly of unit.

NOTE: Specifications may change without notice.

SIMPLICITY PRODUCTS FOR THE PROPER CARE OF EQUIPMENT
These genuine *Simplicity* products will help the owner extend the life of his equipment.

OILS - SPECIFICALLY BLENDED OF HIGH QUALITY BASE OILS & ADDITIVES.

Special Worm Gear (Roticut) Oil for use in all tillers and snowthrowers with worm gear auger drive. Required for protection of brass gears and mating parts. **Case of 12 Quarts, Part #1685100, Individual Quarts 118065.**

Multi-Purpose Hydraulic/Transmission Oil for use in most hydraulic applications, and hydrostatic and gear transmissions. Specific *Simplicity* applications: All hydrostatic transmissions, all bevel gear cases, all Broadmoor, Landlord, Sovereign, 4000, 6000, 7000 transmissions (except Peerless Gear Transmissions). (Not used in SunStar tractor transmission.) **Case of 12 Quarts, Part #1685516, 2½ Gallon Container, Part #1685539.**

2-Cycle Engine Oil, a premium lubricant for all 2-cycle air-cooled engines. **Case of 12 Part #1685517.**

SAE 5W 30 SF/CD Cold Weather Engine Oil for use in all four cycle and diesel engines at 30° temp. and under. **Case of 12 Quarts, Part # 1685576.**

SAE 15W40 SF/CD Engine Oil for gas and diesel engines, warm weather; see engine manufacturer recommendations. **Case of 12 Quarts, Part #1685554.**

Grease Gun Kit has 12" flexible hose to get into tight spots with ease. Kit contains: gun and 1-8 oz. tube of grease, **Part #1685510.** For replacement tube, order **Part # 103077.**

Pneumatic Tire Seal, seals all leaks including bead leaks and punctures up to 3/16 inch diameters. Prevents flats for tread life of tire. Available in following amounts.

Case of 12 - 11 Oz. Tubes 1685537
Case of 24 - 11 Oz. Tubes 1685525
5 Gallon Pail 1685527

Touch-Up Paint keeps equipment in showroom condition.

Spray Cans	Quarts	Daubers 12/Ctn.
*Simplicity Orange - 103282 (12 cans/1685179)	1685037	1685520 - Mixed (6 Simp. Orange, 6 White)
**Classic Orange - 1685558 (12 cans/1685559)	1685560	1685562 - Mixed (6 Classic Orange, 6-White)
White 103049 (12 cans/1685178)	1685032	1685562 - Mixed (6-Classic Orange, 6-White) 1685520 - Mixed (6-Simp. Orange, 6-White)
Black - 1685551 (12 Cans/1685552)	N.A.	N.A.

*For 1977 thru early 1986 products.

**For products produced after 12/1/85.

Simplicity Designer Seat Covers are double stitched, easy care vinyl. Keeps new seats new, makes worn seats look new.

- Small Cover for 4000, 5000,
& 6100 Tractors 1685540
- Large Cover for 6200, 7000 &
9000 Tractors 1685541
- SunStar Seat Cover 1685577

Extend Equipment Life - Use Only Genuine *Simplicity* Parts

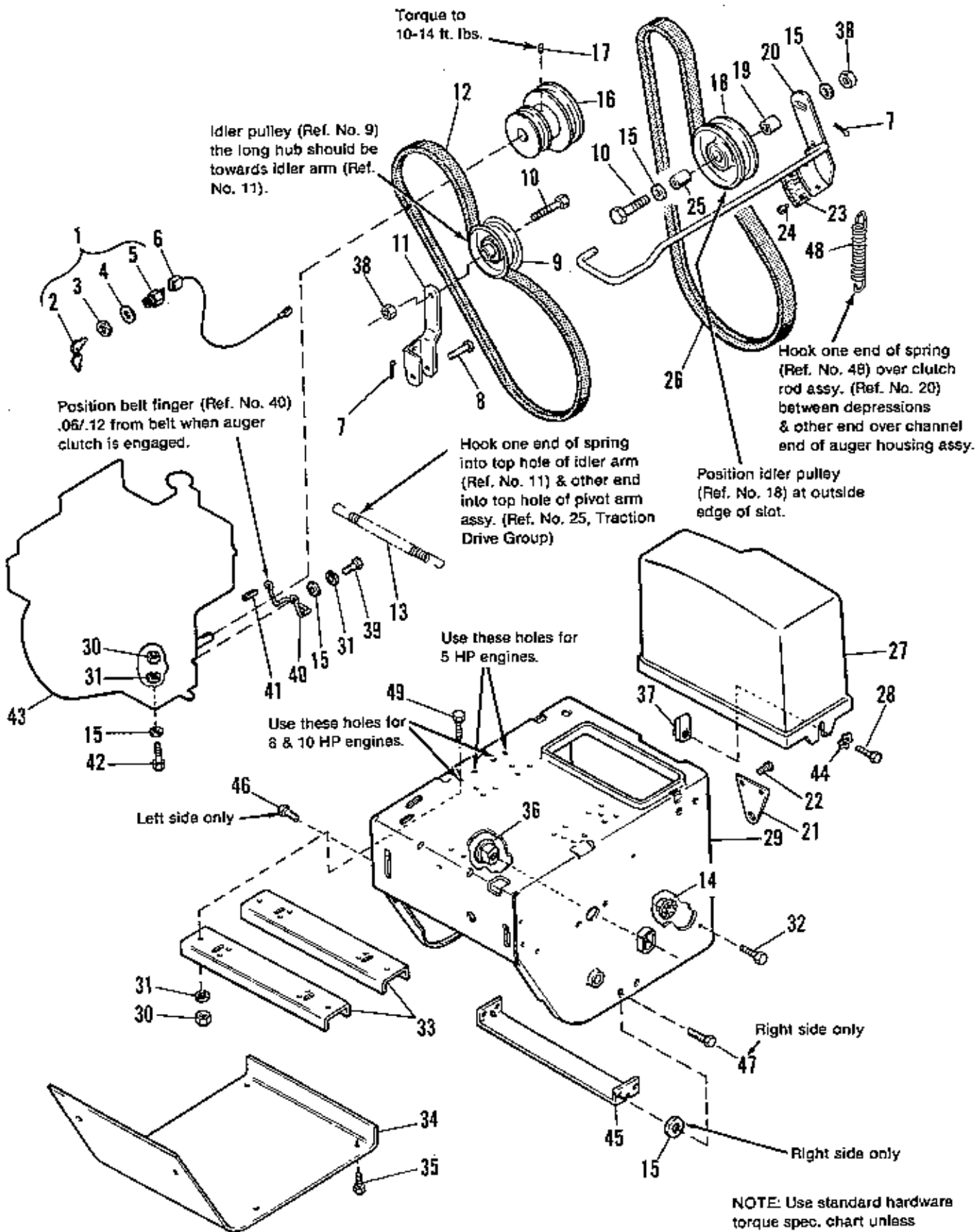
Table of Contents

ENGINE & FRAME GROUP (Mfg. Nos. 1691374, 1691376, 1691377, 1691378, 1691403)	2
ENGINE & FRAME GROUP (Mfg. No. 1691707, 1691708)	4
HANDLE & CONTROL GROUP	6
TRACTION DRIVE GROUP	8
AUGER HOUSING & CHUTE GROUP	10
AUGER DRIVE GROUP	12
HEADLIGHT GROUP	14
DRIFT CUTTER KIT (Mfg. No. 1685189)	14
DECAL GROUP	16
THE "PROTECTOR" [®] SNOW CAB (Mfg. No. 1690681)	18
TIRES & WHEELS GROUP	20
TORQUE SPECIFICATION CHART	Inside Back Cover

Included in this parts book are the following Manufacturer's Numbers:

MODEL 560 SNOWTHROWER MFG. NO. 1691374
MODEL 860 SNOWTHROWER MFG. NO. 1691376 MFG. NO. 1691401 (See Mfg. No. 1691376) MFG. NO. 1691403 MFG. NO. 1691707 MFG. NO. 1691708
MODEL 870 SNOWTHROWER MFG. NO. 1691377
MODEL 1070 SNOWTHROWER MFG. NO. 1691378
THE "PROTECTOR" SNOW CAB MFG. NO. 1690681
DRIFT CUTTERS MFG. NO. 1685189
*5 HP ELECTRIC STARTER (TECUMSEH ENGINE) MFG. NO. 1690384
*8 & 10 HP ELECTRIC STARTER (TECUMSEH ENGINE) MFG. NO. 1690385

*Order Wholegoods number and see your local Tecumseh dealer for parts and service.



Ref. No.	Part No.	Qty.	Description
1	*177163	1	SWITCH, Key (Inc. Ref. Nos. 2, 3, 4 & 5)
2	*122203	1	KEYS
3	*122234	1	NUT, Hex, 5/8-32
4	*918906	1	LOCKWASHER, Inl. 5/8
5		1	*SWITCH (See Ref No. 1)
6	1667700	1	WIRE, Ground
7	1918451	2	PIN, Cotter, 1/8 x 3/4
8	1665994	1	PIN
9	1668477	1	PULLEY, Idler
10	921969	2	CAPSCREW, Hex Hd., 3/8-16 x 1-1/2
11	1666205	1	ARM, Idler, Traction
12	*1672732	1	BELT, Traction
	**1676461	1	BELT, Traction
13	1672735	1	SPRING, Idler
14	1927557	4	NUT, Hex, Whizlock, 5/16-18
15	1917642	10	WASHER, Flat, 5/16
16	*1666109	1	PULLEY, Engine
	**1676493	1	PULLEY, Engine
17	1928691	1	SETSCREW, Socket Hd., 5/16-18 x 5/8
18	1685151	1	PULLEY ASSY.
19	157081	1	SPACER
20	1668155	1	CLUTCH ROD ASSY. (Incl. Ref. Nos. 23 & 24)
21	1669135	1	BRACKET, Clutch Pivot
22	1925003	2	SCREW, Taptite, 1/4-20 x 1/2
23	1669313	1	PAD, Brake
24	925160	2	RIVET, Pop
25	1666294	1	SPACER
26	*1666655	1	BELT, Auger Drive
	**1676460	1	BELT, Auger Drive
27	1667516	1	GUARD, Belt
28	1918249	2	SCREW, Truss Hd., 5/16-18 x 3/4
29	*1701707	1	FRAME, Main
	**1676460	1	FRAME, Main
30	1917372	8	NUT, Hex, 5/16-18
31	1917356	10	LOCKWASHER, 5/16
32	1930591	4	CAPSCREW, Whizlock, 5/16-18 x 3/4
33	1668766	2	BRACKET, Engine Mounting
34	1666374	1	COVER, Bottom
35	927428	6	SCREW, Taptite, 1/4-20 x 3/8
36	1666001	2	BUSHING, Axle
37	935255	2	NUT, Pal, 5/16-18
38	1928731	2	LOCKNUT, Jam, 3/8-16
39	1921515	2	CAPSCREW, Hex. Hd., 5/16-24 x 3/4
40	*1668174	1	BELT STOP
	**1676491	1	BELT STOP
41	*8221042	1	KEY, 3/16 x 3/16 x 1-1/2
	**905856	1	KEY, 1/4 x 1/4 x 1-1/2
42	*1922127	4	CAPSCREW, Hex Hd., 5/16-18 x 1-3/4
	**1921978	4	CAPSCREW, Hex Hd., 5/16-18 x 2
43	See Note Below	1	ENGINE, Tecumseh, 5 H.P. (1691374)
		1	ENGINE, Tecumseh, 8 H.P. (1691377)
		1	ENGINE, Tecumseh, 10 H.P. (1691378)
		1	ENGINE, Briggs & Stratton, 8 H.P. Electric Start (1691376)
		1	ENGINE, Briggs & Stratton, 8 H.P. Manual Start (1691403)
44	1920426	2	LOCKWASHER, Ext. Tooth, 5/16
45	1669198	1	SUPPORT, Tie Bar
46	1928729	2	SCREW, Taptite, 5/16-18 x 3/8 (left side only)
47	16664847	2	SCREW, Taptite, 5/16-18 x 3/4 (right side only)
48	1669837	1	SPRING, Brake
49	1921332	4	CAPSCREW, Hex Hd., 5/16-18 x 3/4

NOTE: Use *Simplicity* SAE-5W-30 Cold Weather Engine Oil, Part #1685576 (12 qts./case)

*Used on Mfg. Nos. 1691374, 1691377, 1691378 only

**Used on Mfg. Nos. 1691376, 1691403 only

A-1193

Use 1 to 2 washers between Ref. Nos. 19 & 20 as needed to assure a centered belt (Ref. No. 26) and no interference between pulleys, Ref. Nos. 9 & 18.

Torque to 10-14 ft. lbs.

Idler pulley (Ref. No. 9) the long hub should be towards idler arm (Ref. No. 11).

Position belt stop (Ref. No. 40) .06/.12 from belt when auger clutch is engaged.

Hook one end of spring (Ref. No. 11) & other end into top hole of pivot arm assy. (Ref. No. 25, Traction Drive Group)

Position idler pulley (Ref. No. 18) at outside edge of slot.

Hook one end of spring (Ref. No. 48) over clutch rod assy. (Ref. No. 20) between depressions & other end into slot in frame.

Use these holes for 5 HP engines.

Use these holes for 8 & 10 HP engines.

Left side only

Right side only

Right side only

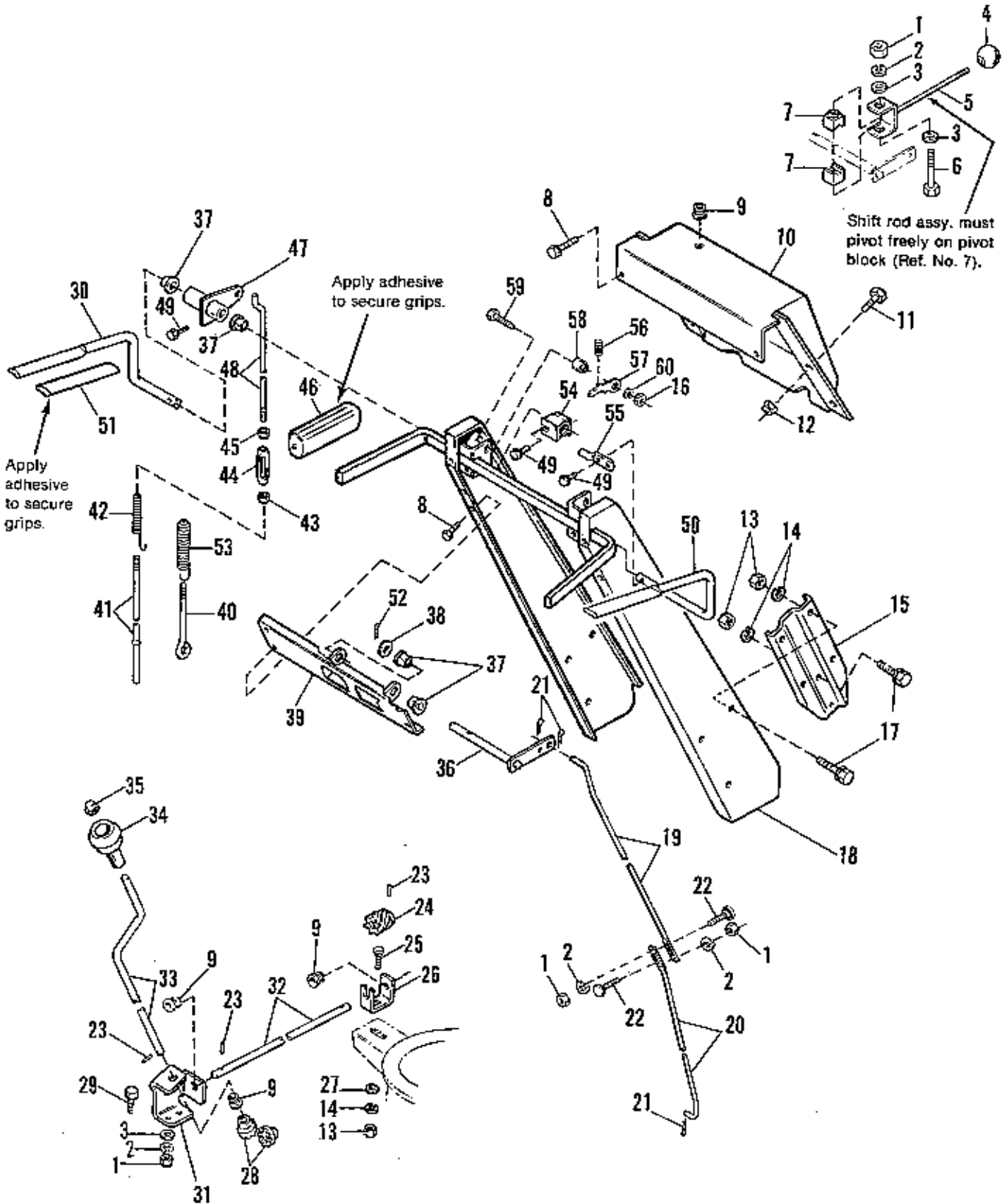
NOTE: Use standard hardware torque spec. chart unless otherwise noted.

Ref. No.	Part No.	Qty.	Description
1	177163	1	SWITCH, Key (Inc. Ref. Nos. 2, 3, 4 & 5)
2	122203	1	KEYS
3	122234	1	NUT, Hex, 5/8-32
4	918906	1	LOCKWASHER, Int. 5/8
5		1	SWITCH (See Ref No. 1)
6	1667700	1	WIRE, Ground
7	1918451	2	PIN, Cotter, 1/8 x 3/4
8	1665994	1	PIN
9	1688477	1	PULLEY, Idler
10	1921969	1	CAPSCREW, Hex Hd., 3/8-16 x 1-1/2
11	1703046	1	ARM, Idler, Traction
12	*1672732	1	BELT, Traction
	**1676461	1	BELT, Traction
13	1672735	1	SPRING, Idler
14	1927557	4	NUT, Hex, Whizlock, 5/16-18
15	1917642	8	WASHER, Flat, 5/16 (Qty. 10 1691708)
16	*1666109	1	PULLEY, Engine
	**1676493	1	PULLEY, Engine
17	1928691	1	SETSCREW, Socket Hd., 5/16-18 x 5/8
18	1611994	1	PULLEY ASSY.
19	157081	1	SPACER
20	1701981	1	CLUTCH ROD ASSY.
21	1669135	1	BRACKET, Clutch Pivot
22	1925003	2	SCREW, Taptite, 1/4-20 x 1/2
23	1921971	1	CAPSCREW, Hex Hd., 3/8-16 x 3/4
24	1917378	1	WASHER, Flat, 3/8
25	1921332	4	CAPSCREW, Hex Hd., 3/8-16 x 3/4
26	*1666655	1	BELT, Auger Drive
	**1676460	1	BELT, Auger Drive
27	1667516	1	GUARD, Belt
28	1918249	2	SCREW, Truss Hd., 5/16-18 x 3/4
29	1701707	1	FRAME, Main
30	1917372	8	NUT, Hex, 5/16-18
31	1917356	10	LOCKWASHER, 5/16
32	1930591	4	CAPSCREW, Whizlock, 5/16-18 x 3/4
33	1668766	2	BRACKET, Engine Mounting
34	1666374	1	COVER, Bottom
35	1927428	6	SCREW, Taptite, 1/4-20 x 3/8
36	1666001	2	BUSHING, Axle
37	935255	2	NUT, Pal, 5/16-18
38	1928731	2	LOCKNUT, Jam, 3/8-16
39	1921515	2	CAPSCREW, Hex. Hd., 5/16-24 x 3/4
40	*1668174	1	BELT STOP
	**1676494	1	BELT STOP
41	*8221042	1	KEY, 3/16 x 3/16 x 1-1/2
	**906656	1	KEY, 1/4 x 1/4 x 1-1/2
42	*1922127	4	CAPSCREW, Hex Hd., 5/16-18 x 1-3/4
	**1921978	4	CAPSCREW, Hex Hd., 5/16-18 x 2
43	See Note	1	ENGINE, Tecumseh, 8 H.P., Electric Start
	Below	1	ENGINE, Briggs & Stratton, 8 H.P., Manual Start
44	1920426	2	LOCKWASHER, Ext. Tooth, 5/16
45	1669198	1	SUPPORT, Tie Bar
46	1928729	2	SCREW, Taptite, 5/16-18 x 3/8 (left side only)
47	1664847	2	SCREW, Taptite, 5/16-18 x 3/4 (right side only)
48	1701595	1	SPRING, Brake

NOTE: Use *Simplicity* SAE-5W-30 Cold Weather Engine Oil, Part #1685576 (12 qts./case)

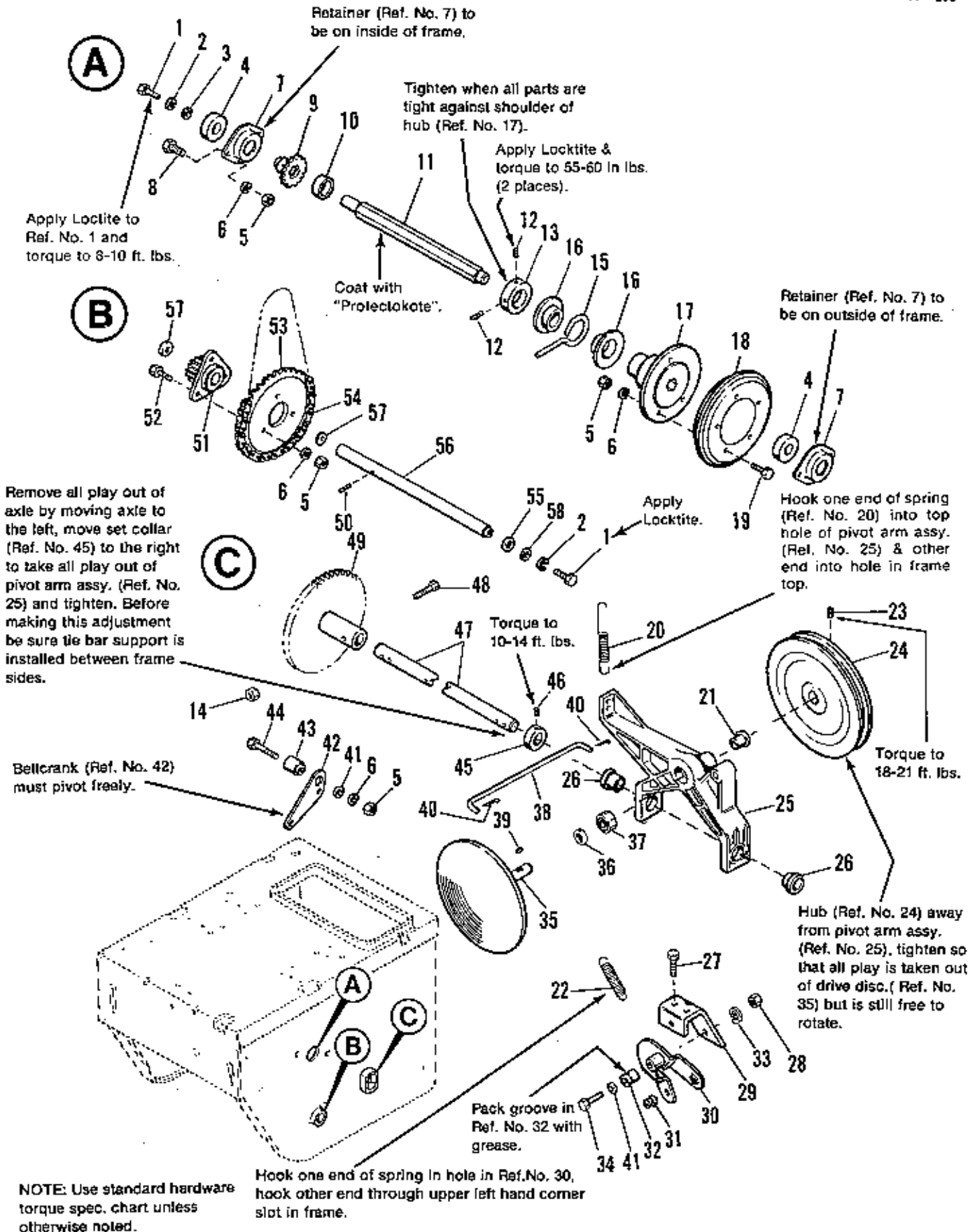
*Used on Mfg. No. 1691707 only.

**Used on Mfg. No. 1691708 only.

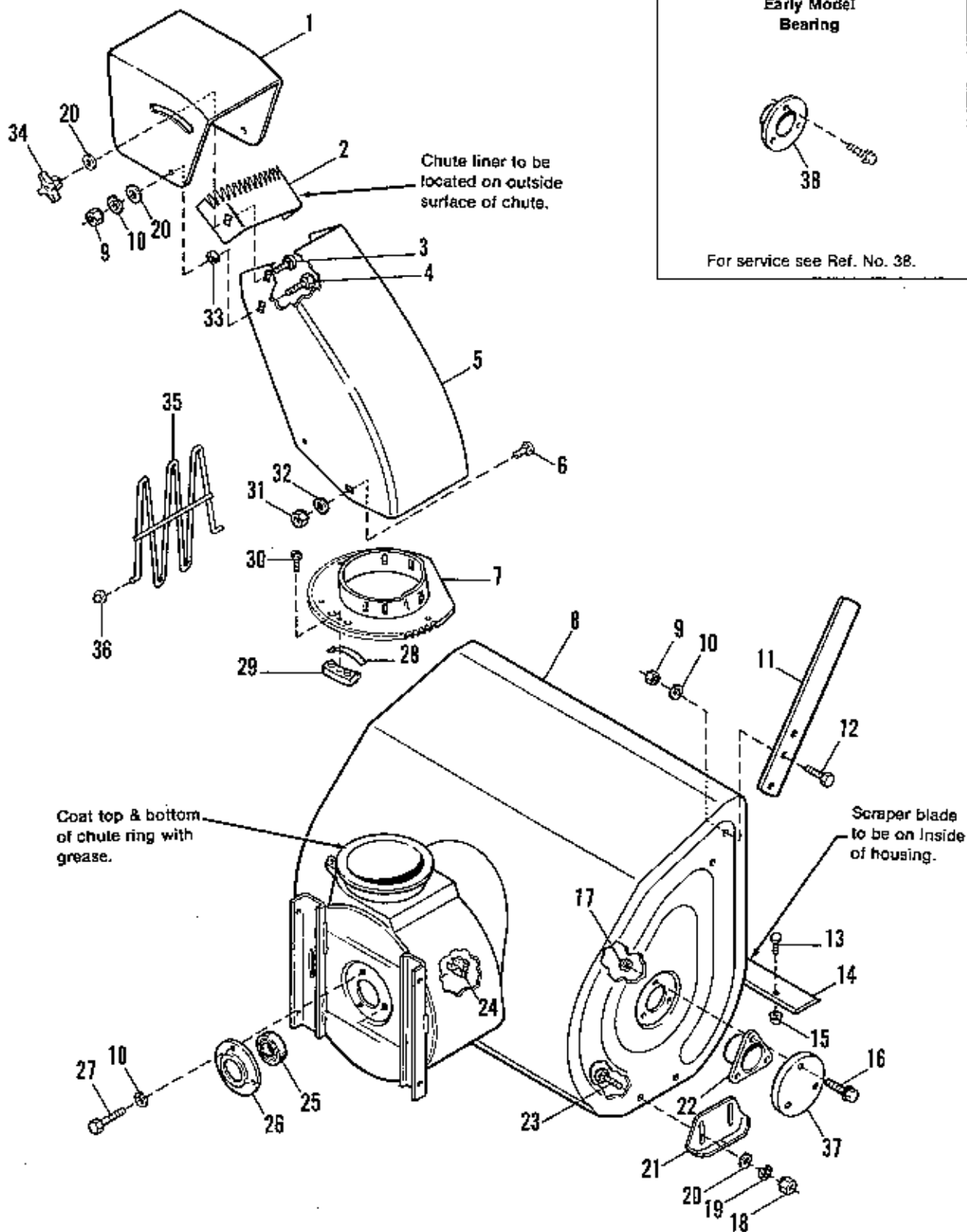


NOTE: Use standard hardware torque spec. chart unless otherwise noted.

Ref. No.	Part No.	Qty.	Description
1	1916622	5	NUT, Hex, 1/4-20
2	1916964	5	LOCKWASHER, 1/4
3	1917377	4	WASHER, Flat, 1/4
4	8021050	1	KNOB
5	1668523	1	SHIFT ROD ASSY.
6	1921159	1	CAPSCREW, Hex Hd., 1/4-20 x 2-1/4
7	1668524	2	BLOCK, Pivot
8	1925003	6	SCREW, Taptite, 1/4-20 x 1/2
9	1667588	4	BUSHING, Plastic
10	1667800	1	DASH, Handle
11	1935450	4	CAPSCREW, Washer Hd., 1/4-20 x 3/4
12	1920397	4	NUT, Nylon Lock, 1/4-20
13	1917372	10	NUT, Hex, 5/16-18
14	1917356	10	LOCKWASHER, 5/16
15	1667806	2	BRACKET, Handle Mtg.
16	1923326	1	NUT, Hex Lock, 5/16-18
17	1930591	9	CAPSCREW, Whizlock, 5/16-18 x 3/4
18	1701208	1	HANDLE ASSY.
19	1666256	1	ROD, Shift-Upper
20	1666255	1	ROD, Shift-Lower
21	1918447	3	PIN Cotter
22	931317	2	BOLT, Carriage, 1/4-20 x 3/4
23	916168	3	PIN, Roll, 1/8 x 3/4
24	1668186	1	WORM, Chute
25	1931333	1	BOLT, Carriage, 5/16-18 x 3/4
26	1685369	1	SUPPORT, Worm
27	1917642	1	WASHER, Flat, 5/16
28	1668188	2	GEAR, Universal
29	1930594	2	CAPSCREW, Hex Hd., 1/4-20 x 3/4
30	1679051	1	HANDLE, Clutch, L.H.
31	1685368	1	SUPPORT, Universal Gear
32	1668187	1	ROD, Chute Worm
33	1668189	1	ROD, Chute Control
34	1668190	1	KNOB, Spinner
35	1960093	1	PALNUT
36	1674567	1	PIVOT ROD ASSY.
37	1668185	6	BUSHING, Plastic
38	1924361	1	WASHER
39	1668050	1	BRACKET, Shift Control
40	1668525	1	ROD, Clutch-Lower, Auger
41	1668526	1	ROD, Clutch-Lower, Traction
42	1668527	1	SPRING
43	1916621	2	NUT, Hex, #10-24, R.H.
44	108775	2	TURNBUCKLE
45	1928704	2	NUT, Hex, #10-24, L.H.
46	1671041	2	GRIP, Handle Bar
47	1668060	2	CLUTCH LEVER ASSY.
48	1668121	2	ROD, Clutch-Upper
49	1928732	5	SCREW, Taptite, #10-24 x 1
50	1703045	1	HANDLE, Clutch R.H.
51	1668608	2	GRIP, Clutch
52	1918452	1	PIN, Cotter, 1/8 x 1
53	1669323	1	SPRING
54	1679014	1	GUIDE, Control
55	1677453	1	ROD, Control
56	1701342	1	SPRING
57	1677454	1	LATCH, Control
58	1678579	1	SPACER, Special
59	1921221	1	CAPSCREW, Hex Hd., 5/16-18 x 1-1/2
60	1919326	1	WASHER, Plain



Ref. No.	Part No.	Qty.	Description
1	1921959	2	CAPSCREW, Hex Hd., 1/4-20 x 5/8
2	1916964	2	LOCKWASHER, 1/4
3	1960353	2	WASHER, Flat, 1/4
4	1666292	2	BEARING
5	1917372	10	NUT, Hex, 5/16-18
6	1917356	10	LOCKWASHER, 5/16
7	1667341	2	RETAINER, Bearing
8	1925205	4	CAPSCREW, Hex Hd., 5/16-18 x 5/8
9	1667331	1	SPROCKET, 10 Tooth
10	1667501	1	SPACER
11	1667340	1	SHAFT, Hex
12	1960348	2	SETSCREW, Socket Hd., 1/4-20 x 3/8
13	1667335	1	SET COLLAR
14	1924433	2	NUT, Hex, Lock, 5/16-18
15	1666207	1	PIN, Side
16	1678956	2	COLLAR, Thrust
17	1665995	1	HUB, Friction Disc
18	1665975	1	DISC, Friction
19	1921332	3	CAPSCREW, Hex Hd., 5/16-18 x 3/4
20	157207	1	SPRING
21	1666855	1	BUSHING
22	1668255	1	SPRING
23	1928721	1	SETSCREW, Sq. Hd., 5/16-18 x 1/2
24	1672595	1	PULLEY, Traction
25	1670849	1	ARM ASSY., Pivot w/Bushings (Incl. all bushings, Qty 1 of Ref. No. 21, Qty 2 of Ref. No. 26; Qty. 1 of Ref. No. 37)
26	1666425	2	BUSHING
27	924856	3	SCREW, Taptite, 5/16-18 x 1/2
28	916950	1	NUT, Hex, 3/8-16
29	1673994	1	BRACKET, Bushing
30	1669256	1	ARM ASSY., Shift w/Bushings (Includes Ref. No. 31)
31	1669255	1	BUSHING, Ball
32	1666114	1	BUSHING, Spacer
33	916965	1	LOCKWASHER, 3/8
34	1923701	1	CAPSCREW, Hex Hd., 3/8-16 x 2
35	1666230	1	DISC, Drive
36	1666379	1	WASHER
37	1665521	1	BEARING
38	1666105	1	ROD, Pivot
39	918312	1	KEY, Woodruff, 3/16 x 5/8
40	918451	2	PIN, Cotter, 1/8 x 3/4
41	917642	2	WASHER, Flat, 5/16
42	1700473	1	BELLCRANK
43	1666106	1	BUSHING, Pivot
44	1935159	1	CAPSCREW, Hex Whizlock, 5/16-18 x 2-1/4
45	8021010	1	SET COLLAR
46	1928721	1	SETSCREW, Sq. Hd., 5/16-18 x 1/2
47	1676741	1	AXLE
48	1930570	1	CAPSCREW, Hex Hd., 5/16-18 x 1-1/2
49	1668145	1	GEAR ASSY.
50	1923302	1	PIN, Roll, 1/8 x 1
51	1667326	1	GEAR ASSY.
52	1921333	3	CAPSCREW, Hex Hd., 5/16-18 x 1
53	1667330	1	SPROCKET, 36 Tooth
54	1666980	1	CHAIN, Drive
55	1909589	1	WASHER, Int. Lock 1/2
56	1667332	1	JACKSHAFT
57	1919387	2	WASHER
58	1917377	1	WASHER, 1/4

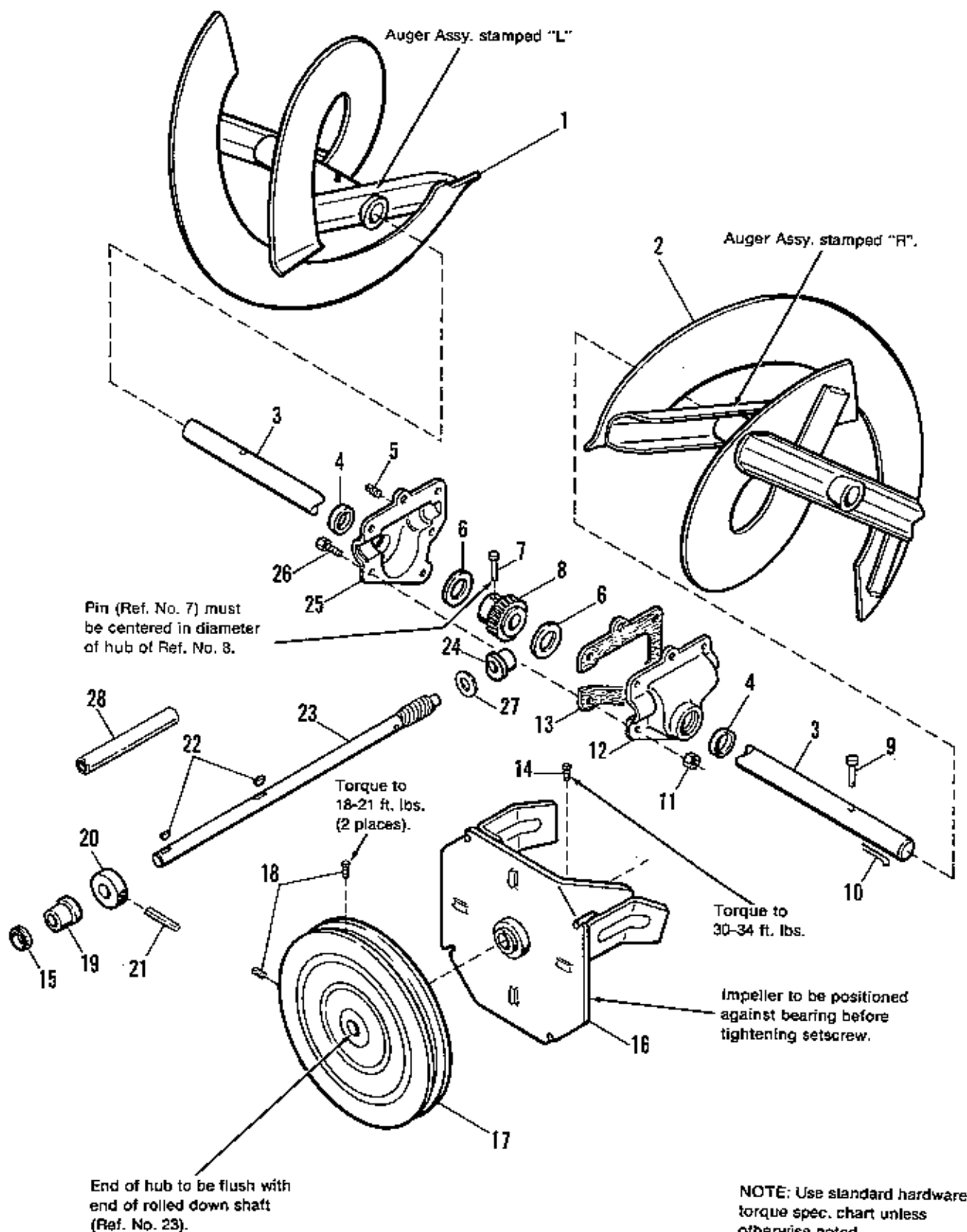


NOTE: Use standard hardware torque spec. chart unless otherwise noted.

Ref. No.	Part No.	Qty.	Description
1	1667791	1	DEFLECTOR ASSY.
2	1667828	1	LINER, Chute
3	1931334	1	BOLT, Carriage, 5/16-18 x 7/8
4	1936482	2	SCREW, Truss Phil Hd., 5/16-18 x 3/4
5	1671011	1	CHUTE
6	1960252	3	BOLT, Carriage, 1/4-20 x 5/8
7	1679834	1	GEAR, Chute
*8	1667509	1	HOUSING ASSY., Auger, 60 cm (24") (Used on all models except Mfg. No. 1691377 & 1671378)
	1667510	1	HOUSING ASSY., Auger, 70 cm (28") (Used on Mfg. No. 1691377 & 1691378 only)
9	1917372	2	NUT, 5/16-18 (Qty. 6 on 1691377 & 1691378)
10	1917366	7	LOCKWASHER, 5/16 (Qty. 9 on 1691377 & 1691378)
11	1668171	2	CUTTER, Drill (1691377 & 1691378 only)
12	921332	4	CAPSCREW, Hex Hd., 5/16-18 x 3/4 (1691377 & 1691378 only)
13	1931332	5	BOLT, Carriage, 5/16-18 x 5/8
14	1667986	1	BLADE, Scraper, 60 cm (24")
	1667987	1	BLADE, Scraper, 70 cm (28")
15	1935048	5	LOCKNUT, Flange, 5/16-18
16	1923325	6	CAPSCREW, Hex Flange Whizlock, 5/16-18 x 7/8
17	1923362	6	NUT, Hex, Center Lock, 5/16-18
18	1916950	4	NUT, Hex, 3/8-16
19	1916965	4	LOCKWASHER, 3/8
20	1917642	7	WASHER, Flat, 5/16
21	177434	2	SKID
22	1665980	2	BEARING, Auger
23	1931348	4	BOLT, Carriage, 3/8-16 x 3/4
24	930659	3	NUT, Retainer, 5/16-18
25	108202	1	BEARING, Ball
26	1665982	1	RETAINER, Bearing
27	1925205	3	CAPSCREW, Hex Hd., 5/16-18 x 5/8
28	1667865	3	SPRING
29	1666613	3	HOLD DOWN, Chute
30	1960001	3	SCREW, Plastite, #10
31	1920397	3	LOCKNUT, Nylon, 1/4-20
32	1917377	3	WASHER, Flat, 1/4
33	1667790	2	SPACER
34	1670578	1	KNOB, 4 Arm w/5/16-18 Thd. Insert
35	1677064	1	GUARD, Chute
36	1663812	2	PUSH NUT
37	1668639	2	CAP, Bearing
**38	1685365	1	BEARING KIT, Auger

*Ref. No. 8 includes Ref. No. 13, 14 & 15.

**NOTE: Kit 1685365 includes Qty. 2 of 1665980 (bearing), Qty. 2 of 1668639 (bearing cap) & Qty. 6 of each, 1923362 (nut) & 1923325 (capscrew).



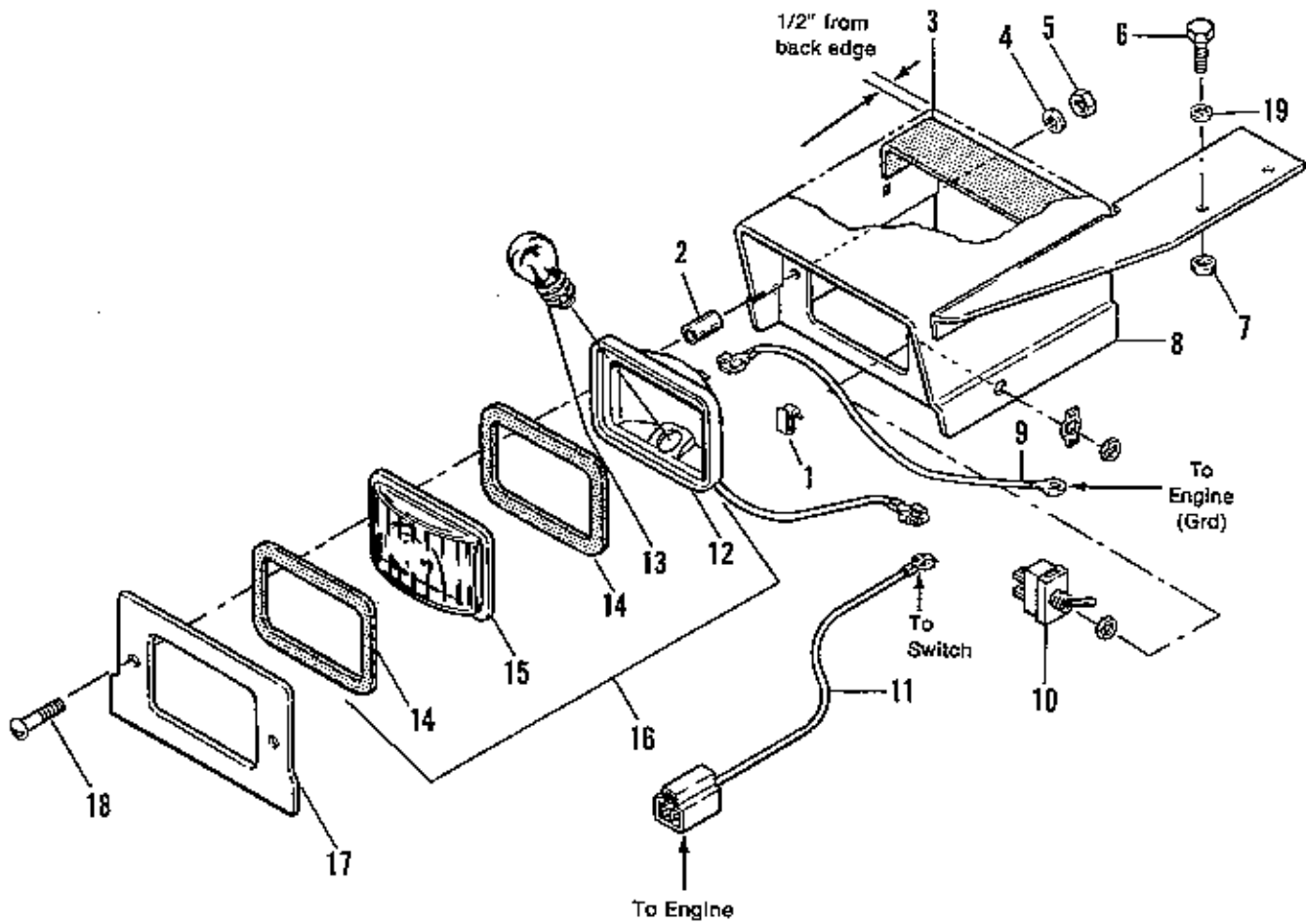
Ref. No.	Part No.	Qty.	Description
1	1666401	1	AUGER ASSY., L.H., 60 cm (24")
	1666660	1	AUGER ASSY., L.H., 70 cm (28")
2	1666402	1	AUGER ASSY., R.H., 60 cm (24")
	1666659	1	AUGER ASSY., R.H., 70 cm (28")
3	1667983	1	SHAFT, Auger
4	118118	2	SEAL
5	1668971	1	PLUG, Pipe, 1/8
6	1666423	2	WASHER, Thrust
7	936100	1	PIN, Drivelok, 5/16 x 1-1/2
8	1666509	1	GEAR, Worm
9	1668344	2	PIN, Shear
10	1918447	2	PIN, Cotter, 3/32 x 3/4
11	1923358	6	LOCKNUT, Hex, 1/4-20
12	1611782	1	CASE, Gear, R.H.
13	1611784	1	GASKET
14	1923084	1	SETSCREW, Sq. Hd., 3/8-16 x 1/2
15	1611789	1	SEAL, OIL
16	1668113	1	IMPELLER ASSY.
17	1679293	1	PULLEY, Auger Input
18	1928721	2	SETSCREW, Sq. Hd., 5/16-18 x 1/2
19	1666425	1	BUSHING, Flange
20	1668105	1	COLLAR, Thrust
21	936098	1	PIN, Drivlok, 3/16 x 1-1/2
22	918312	2	KEY, Woodruff, 3/16 x 5/8
23	1666426	1	SHAFT, Roller Worm
24	1666424	1	BUSHING, Flange
25	1611783	1	CASE, Gear, L.H.
26	1924009	6	CAPSCREW, Hex Hd., 1/4-20 x 7/8
27	1670971	1	WASHER, Thrust
28	1612111	1	TUBE, Worm Shaft (1691707, 1691708 only)

NOTE: Use only *Simplicity* Special Worm Gear Oil in Worm Gear Housing.

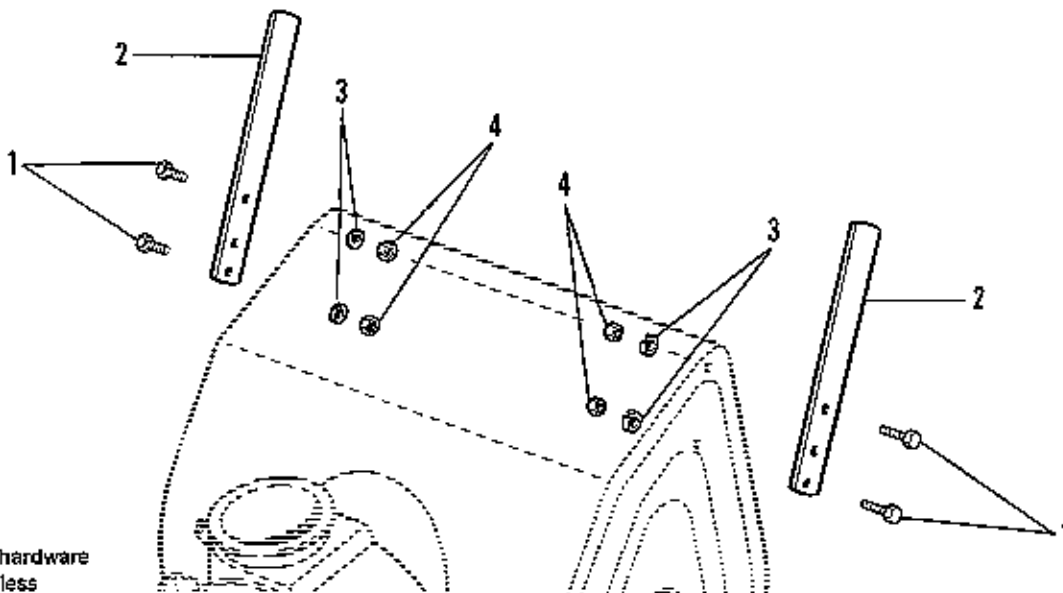
1 Quart Part #118065

12 Qt. Case, Part #1665100

8 Oz. Tube, Part #103154



Drift Cutter Kit



NOTE: Use standard hardware torque spec. chart unless otherwise noted.

Headlight Group (8 & 10 HP Models)

Simplicity

Ref. No.	Part No.	Qty.	Description
1	122159	1	CLIP, Wire
2	1664792	2	SPACER
3	1668830	1	PAD, Rubber
4	916964	2	LOCKWASHER, 1/4
5	916622	2	NUT, Hex, 1/4-20
6	1921333	2	CAPSCREW, Hex Hd., 5/16-18 x 1
7	1919381	4	WASHER, Plain, 5/16 x 1 O.D.
8	1668738	1	COVER ASSY., Headlight
9	1668762	1	WIRE, Light to Ground
10	122184	1	SWITCH, Toggle (Incl. washer & nuts)
11	1701939	1	WIRE, Engine to Switch
12	1668748	1	SOCKET, Reflector
13		1	BULB, #1141 (obtain locally)
14	1654662	2	GASKET
15	1668721	1	LENS, Amber
16	1701938	1	LIGHT ASSY. (Incl. Ref. Nos. 12 thru 15)
17	1668728	1	SUPPORT, Light
18	1917451	2	SCREW, Rd. Hd., 1/4-20 x 1
19	1923300	2	LOCKWASHER, Internal Tooth, 5/16

Mfg. No. 1685189

Drift Cutter Kit (Standard on 8 & 10 HP Models)

Ref. No.	Part No.	Qty.	Description
1	1921332	4	CAPSCREW, Hex Hd., 5/16-18 x 3/4
2	1668171	2	CUTTER, Drift
3	1917356	4	LOCKWASHER, 5/16
4	1917372	4	NUT, Hex, 5/16-18

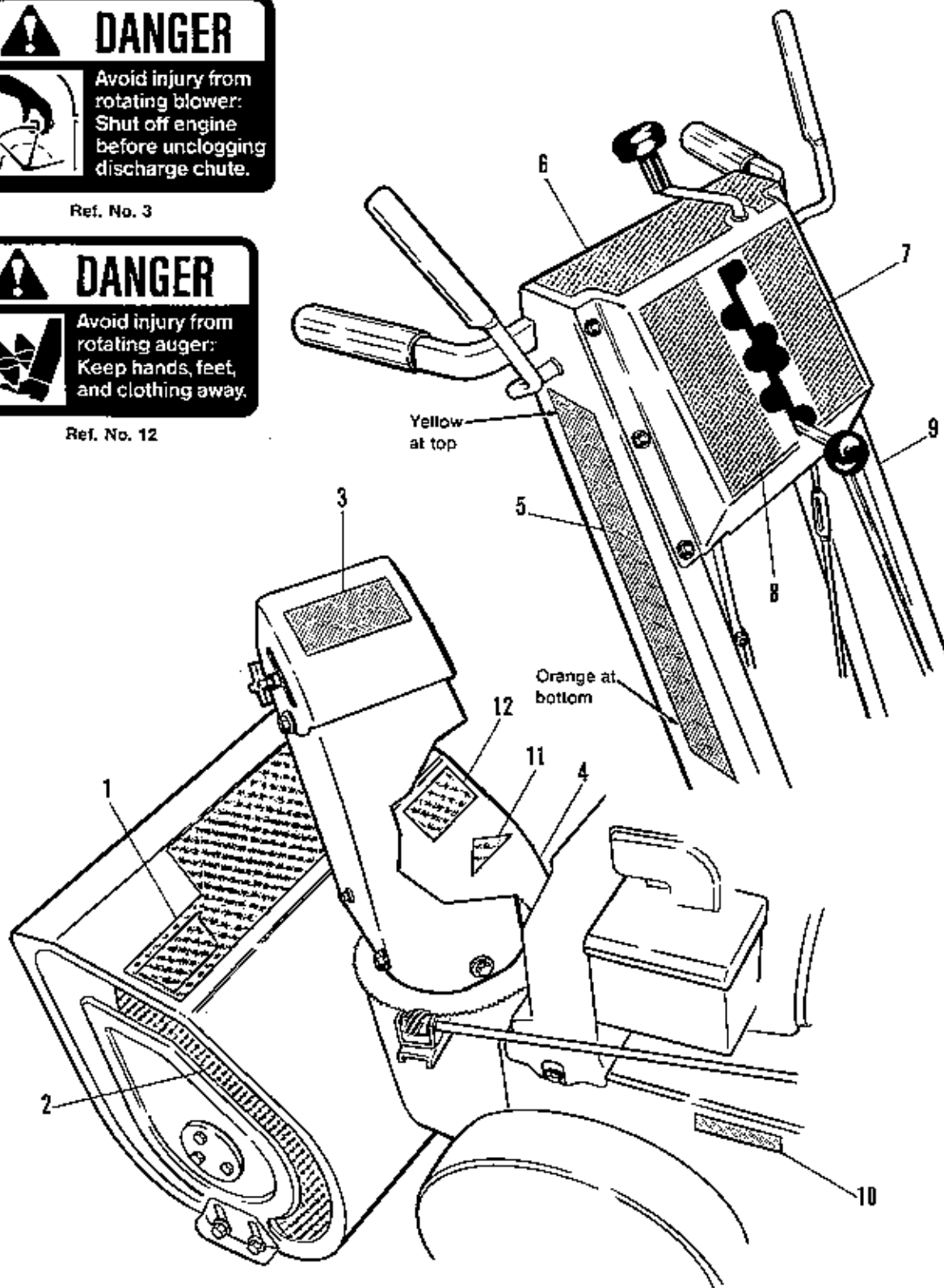
SAFETY DECALS

 **DANGER**
 Avoid injury from rotating blower:
Shut off engine
before unclogging
discharge chute.

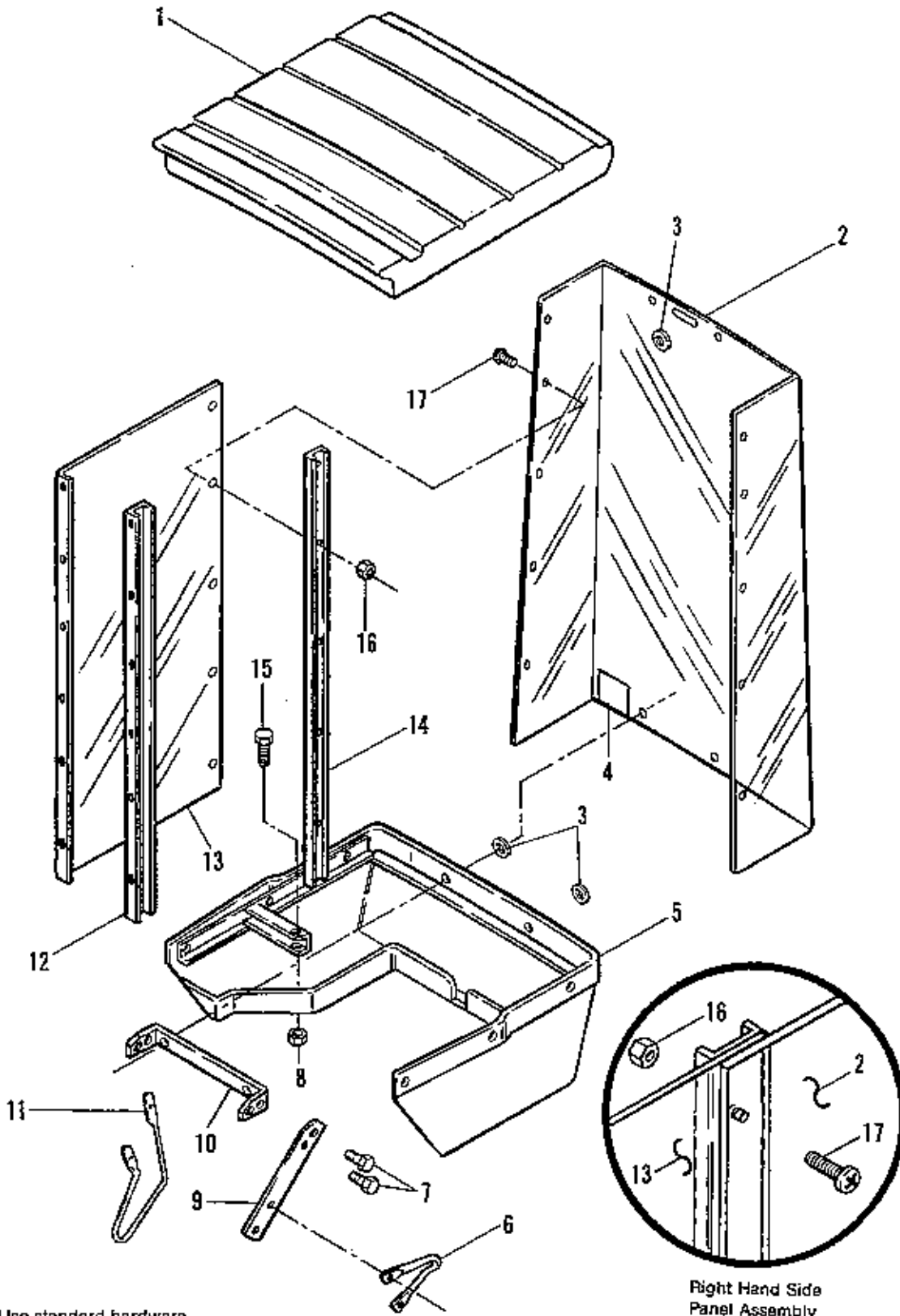
Ref. No. 3

 **DANGER**
 Avoid injury from rotating auger:
Keep hands, feet,
and clothing away.

Ref. No. 12

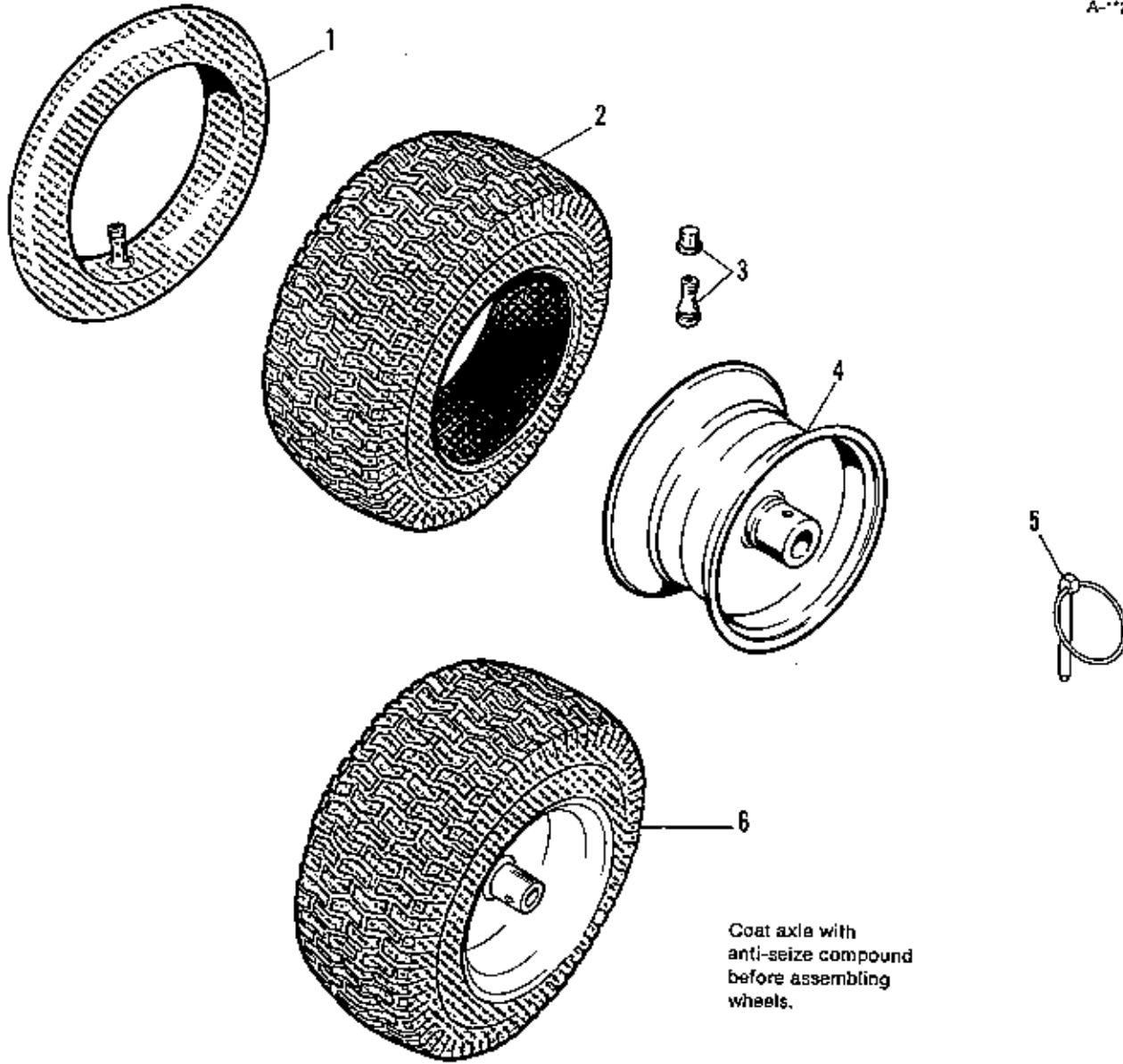


Ref. No.	Part No.	Qty.	Description
1	1668938	1	DECAL, Housing, 560
	1676496	1	DECAL, Housing, 860
	1668940	1	DECAL, Housing, 870
	1701803	1	DECAL, Housing, 1070
2	1668937	1	DECAL, Housing, End L.H.
3	1677488	1	DECAL, Danger, Blower
4	1668936	1	DECAL, Hsg., End, R.H.
5	1668934	1	DECAL, Handle, R.H.
6	1701591	1	DECAL, Dash
7	1669557	1	DECAL, Shift Pattern, L.H.
8	1669556	1	DECAL, Shift Pattern, R.H.
9	1668935	1	DECAL, Handle, L.H.
10		1	I.D. Tag (Not Serviced)
11		1	DECAL, OPEI (Not Serviced)
12	1677485	1	DECAL, Danger, Auger
Not Shown:			
	1678195	1	DECAL, Touch-up Paint






NOTE: Use standard hardware torque spec. chart unless otherwise noted.

Ref. No.	Part No.	Qty.	Description
1	1668887	1	COVER, Top
2	1668886	1	PANEL, Front
3	1917377	3	WASHER, Flat, 1/4
4	1669127	1	DECAL, Cleaning Instructions
5	1668869	1	SHROUD, Lower
6	1669090	1	GUIDE, Rope
7	1923341	4	CAPSCREW, Hex Hd., 1/4-20 x 3/4
8	1924433	2	LOCKNUT, Nylon, 5/16-18
9	1668851	2	SUPPORT, Side
10	1668852	1	SUPPORT, Front
11	1669150	2	ROD, Skid
12	1611730	2	CHANNEL, Side
13	1668884	2	PANEL, Side
14	1611731	1	SUPPORT ASSY., L.H.
	1611732	1	SUPPORT ASSY., R. H. (not shown)
15	1922127	2	CAPSCREW, Hex Hd., 5/16-18 x 1-3/4
16	1920397	37	LOCKNUT, Nylon, 1/4-20
17	1935945	33	SCREW, Phil. Truss Hd., 1/4-20 x 3/4



Ref. No.	Part No.	Qty.	Description
1	153038		TUBE (Service Only) 4.80/4.00-8
2	1668163	2	TIRE, 4.80/4.00-8 (All models except 1691707 & 1691708)
	1612000	2	TIRE, "Snow Hog" (1691707 & 1691708 only)
3	172353	2	VALVE STEM & CAP
4	1677057	2	WHEEL & HUB ASSY.
5	1666969	2	PIN
6	1676742	2	WHEEL & TIRE ASSY. (All models except 1691707 & 1691708)
	1611997	2	WHEEL & TIRE ASSY. (1691707 & 1691708 only)

**TORQUE SPECIFICATIONS FOR
STANDARD MACHINE HARDWARE
TOLERANCE $\pm 20\%$**




SIZE	SAE GRADE #2		SAE GRADE #5		SAE GRADE #8	
						
8-32	19	In. Lbs.	30	In. Lbs.	41	In. Lbs.
8-36	20	"	31	"	43	"
10-24	27	"	43	"	60	"
10-32	31	"	49	"	68	"
1/4-20	66	"	8	Ft. Lbs	12	Ft. Lbs.
1/4-28	76	"	10	"	14	"
5/16-18	11	Ft. Lbs	17	"	25	"
5/16-24	12	"	19	"	25	"
3/8-16	20	"	30	"	45	"
3/8-24	23	"	35	"	50	"
7/16-14	30	"	50	"	70	"
7/16-20	35	"	55	"	80	"
1/2-13	50	"	75	"	110	"
1/2-20	55	"	90	"	120	"
9/16-12	65	"	110	"	150	"
9/16-18	75	"	120	"	170	"
5/8-11	90	"	150	"	220	"
5/8-18	100	"	180	"	240	"
3/4-10	160	"	260	"	386	"
3/4-16	180	"	300	"	420	"
7/8-9	140	"	400	"	600	"
7/8-14	155	"	440	"	660	"
1-8	220	"	580	"	900	"
1-12	240	"	640	"	1,000	"

NOTE:

1. These torque values are to be used for all *Simplicity* hardware excluding: locknuts, self-tapping screws, thread forming screws, sheet metal screws and socket head setscrews.
2. Recommended seating torque values for locknuts:
 - a. For prevailing torque locknuts - use 65% of grade 5 torques.
 - b. For flange whizlock nuts (and screws) - use 135% of grade 5 torques.
3. Unless otherwise noted on assembly drawings all torque values must meet this specification.

BOLT HEAD MARKING

S.A.E. GRADE:

- 2 
- 5 
- 8 

Simplicity Manufacturing, Inc.
500 N. Spring Street
P.O. Box 997
Port Washington, WI 53074-0997

Copyright © 1988 Simplicity Manufacturing, Inc.

PRINTED IN U.S.A.