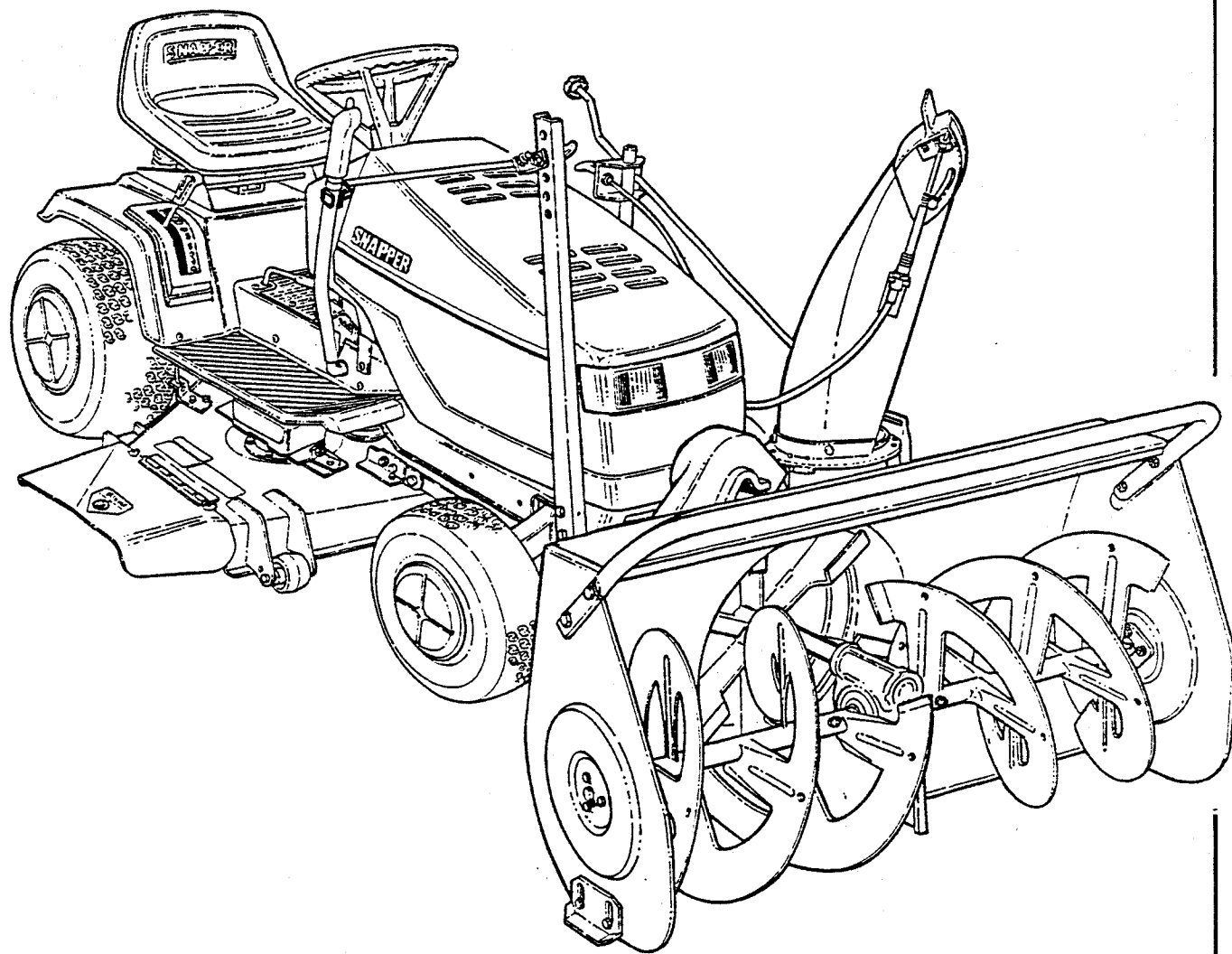


Parts Manual for

SNAPPER®

38" SNOW THROWER ATTACHMENT
#80575 *LT SERIES TRACTORS

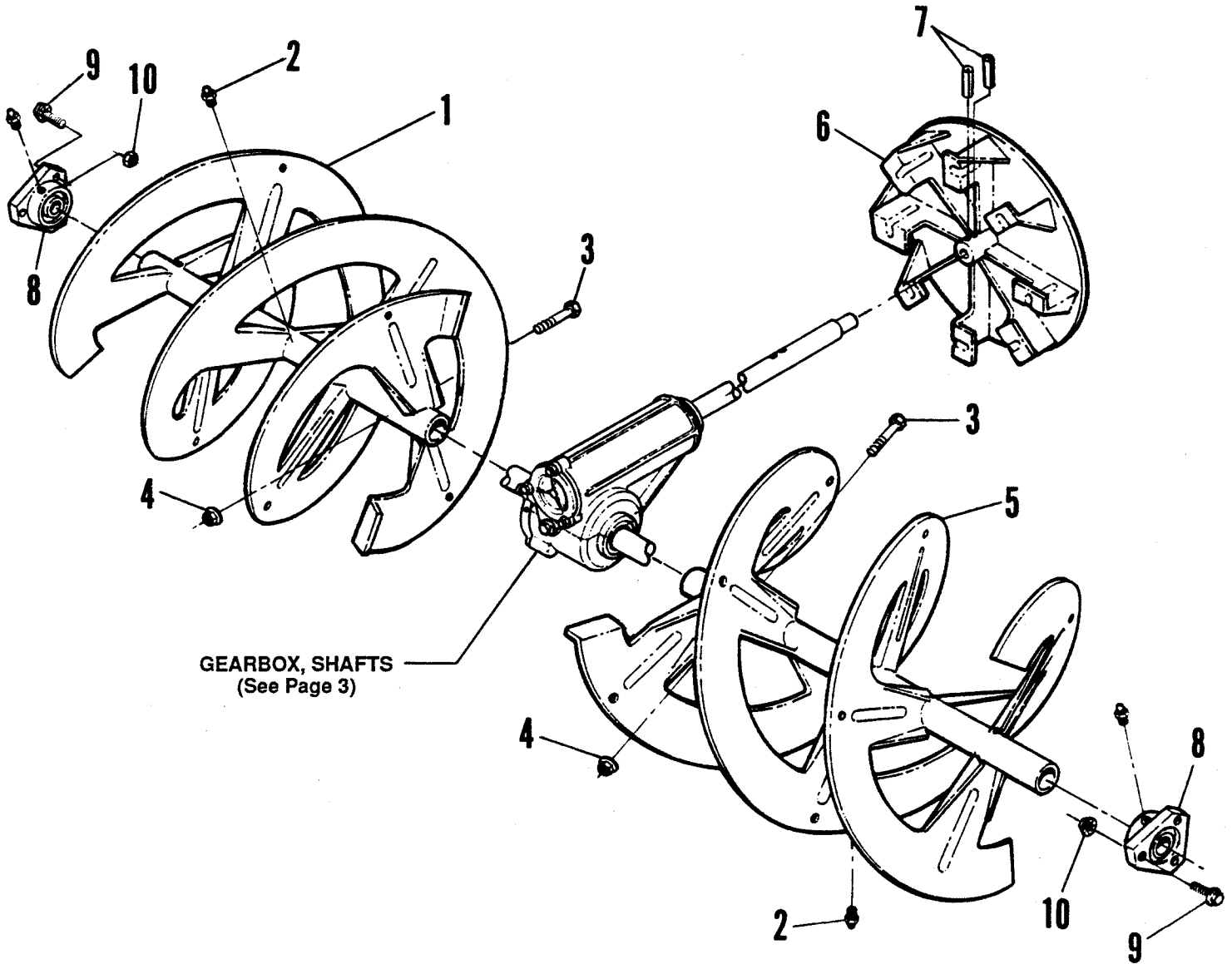
*(THREE PIECE FRAME ONLY)



SNAPPER® McDonough, GA., 30253 U.S.A.

(REV. 3, 10/96) MANUAL No. 06104
(REPLACES REV. 2, 11/94 ISSUE)

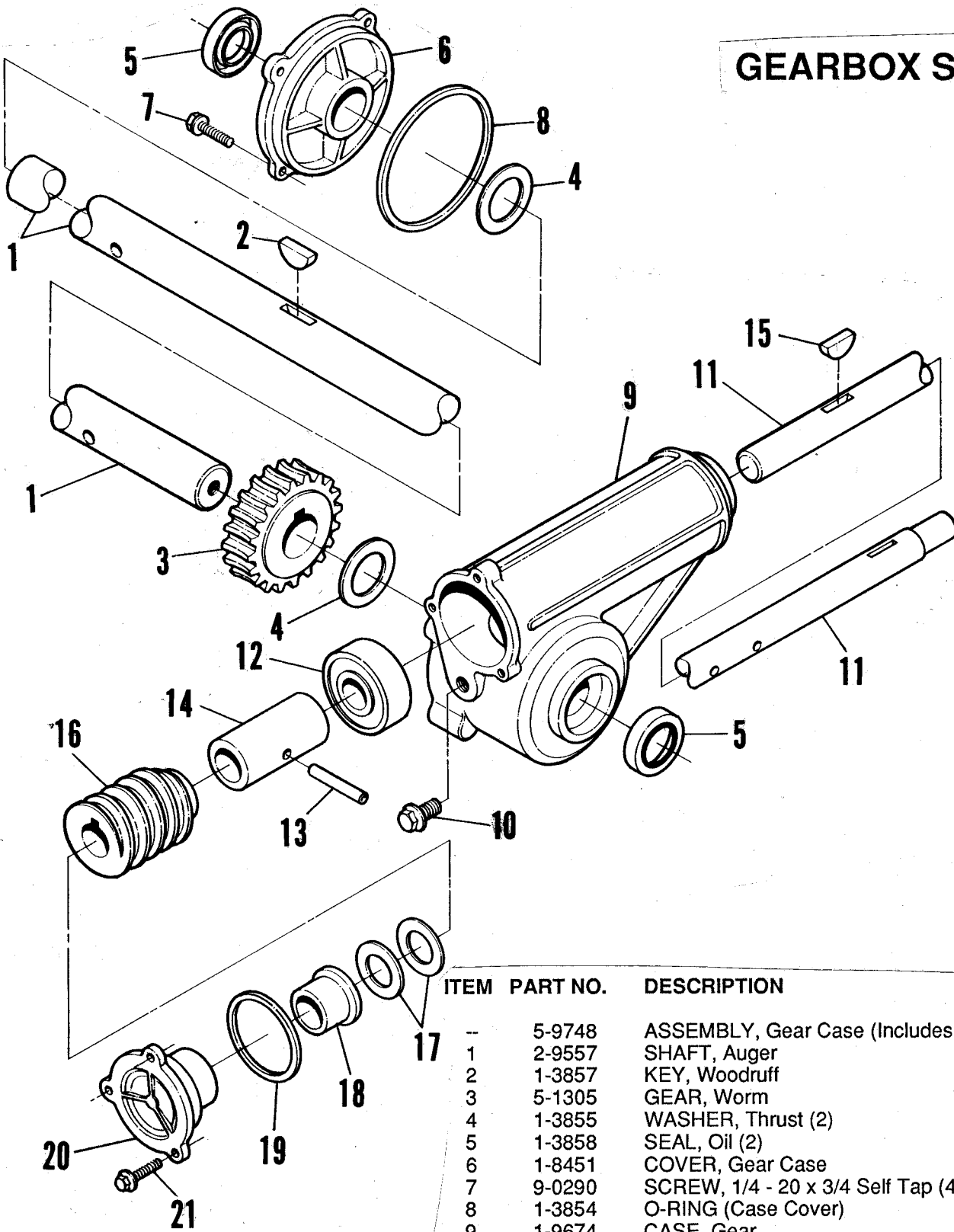
IMPELLER AUGERS 38"



GEARBOX, SHAFTS
(See Page 3)

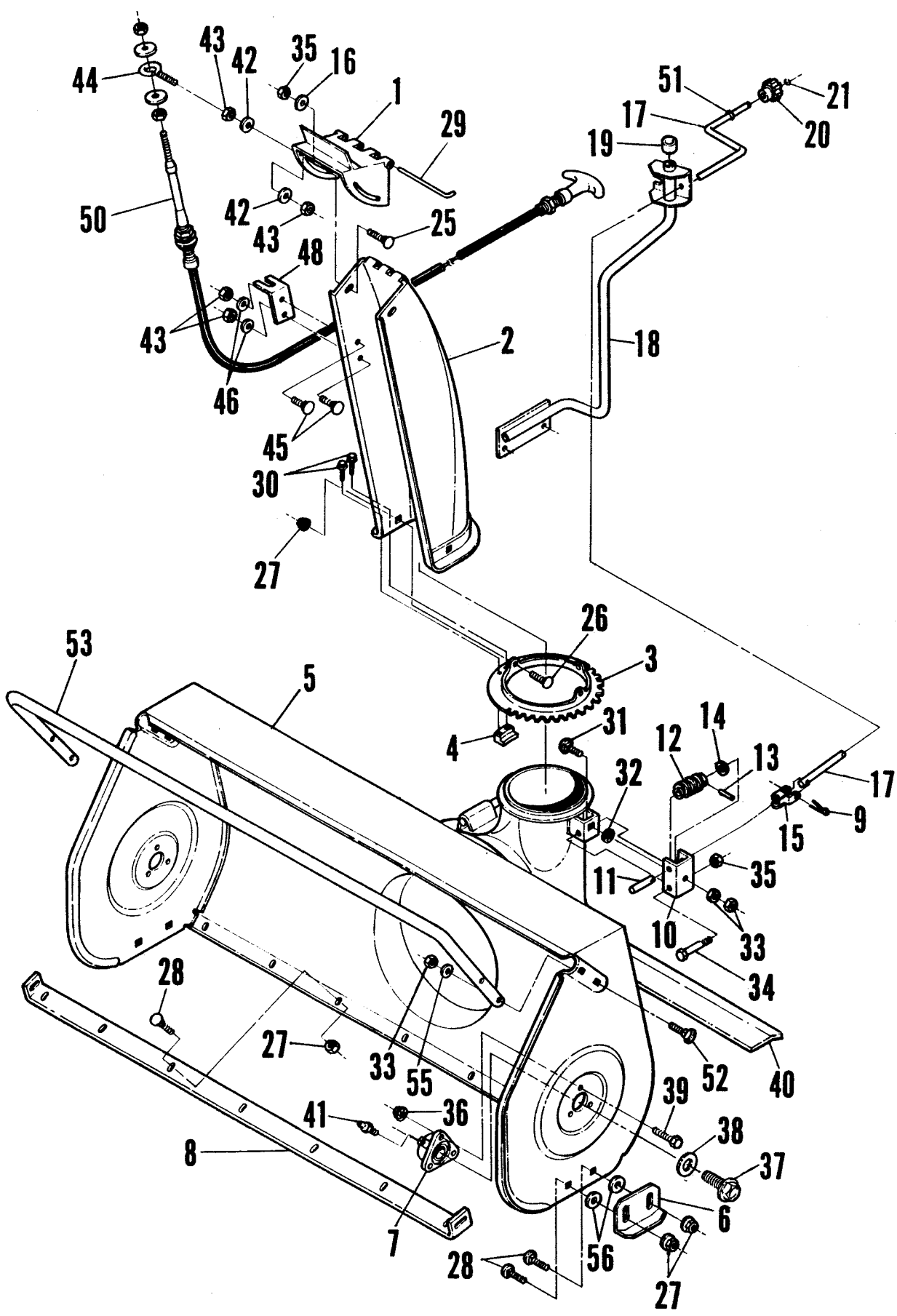
ITEM	PART NO.	DESCRIPTION
1	4-9786	AUGER, Right Side
2	1-3864	FITTING, Grease (2)
3	1-3865	SHEAR - Bolt (2)
4	9-0585	LOCKNUT, 5/16 - 18 Hex Flange (2)
5	4-9785	AUGER, Left Side
6	4-9770	FAN, Impeller
7	1-5395	PIN, Drive Lock (2)
8	5-1350	BEARING, Auger Shaft (Includes 1-0817 Grease Fitting) (2)
9	9-0699	BOLT, 1/4 - 20 x 3/4 Hex Flange Lock (6)
10	9-0583	NUT, 1/4 - 20 Hex Flange (6)

GEARBOX SHAFTS



ITEM	PART NO.	DESCRIPTION
--	5-9748	ASSEMBLY, Gear Case (Includes Following Items)
1	2-9557	SHAFT, Auger
2	1-3857	KEY, Woodruff
3	5-1305	GEAR, Worm
4	1-3855	WASHER, Thrust (2)
5	1-3858	SEAL, Oil (2)
6	1-8451	COVER, Gear Case
7	9-0290	SCREW, 1/4 - 20 x 3/4 Self Tap (4)
8	1-3854	O-RING (Case Cover)
9	1-9674	CASE, Gear
10	9-0506	PLUG, Check (3/8 x 1/2 Self Tap Screw)
11	2-7681	SHAFT, Impeller Fan
12	1-3313	BEARING, Ball
13	1-3862	ROLL-PIN, 1/4 x 1 x 1 1/2
14	1-3856	SPACER
15	1-3861	KEY, Woodruff
16	2-7606	GEAR, Rolled Worm
17	1-0935	WASHER (Spacers) (2)
18	1-2252	BUSHING
19	1-3853	O-RING (End Cap)
20	1-8450	CAP, End
21	9-0363	SCREW, 10 - 24 x 5/8 Self Tap (3)

BLOWER & DISCHARGE (FRONT)

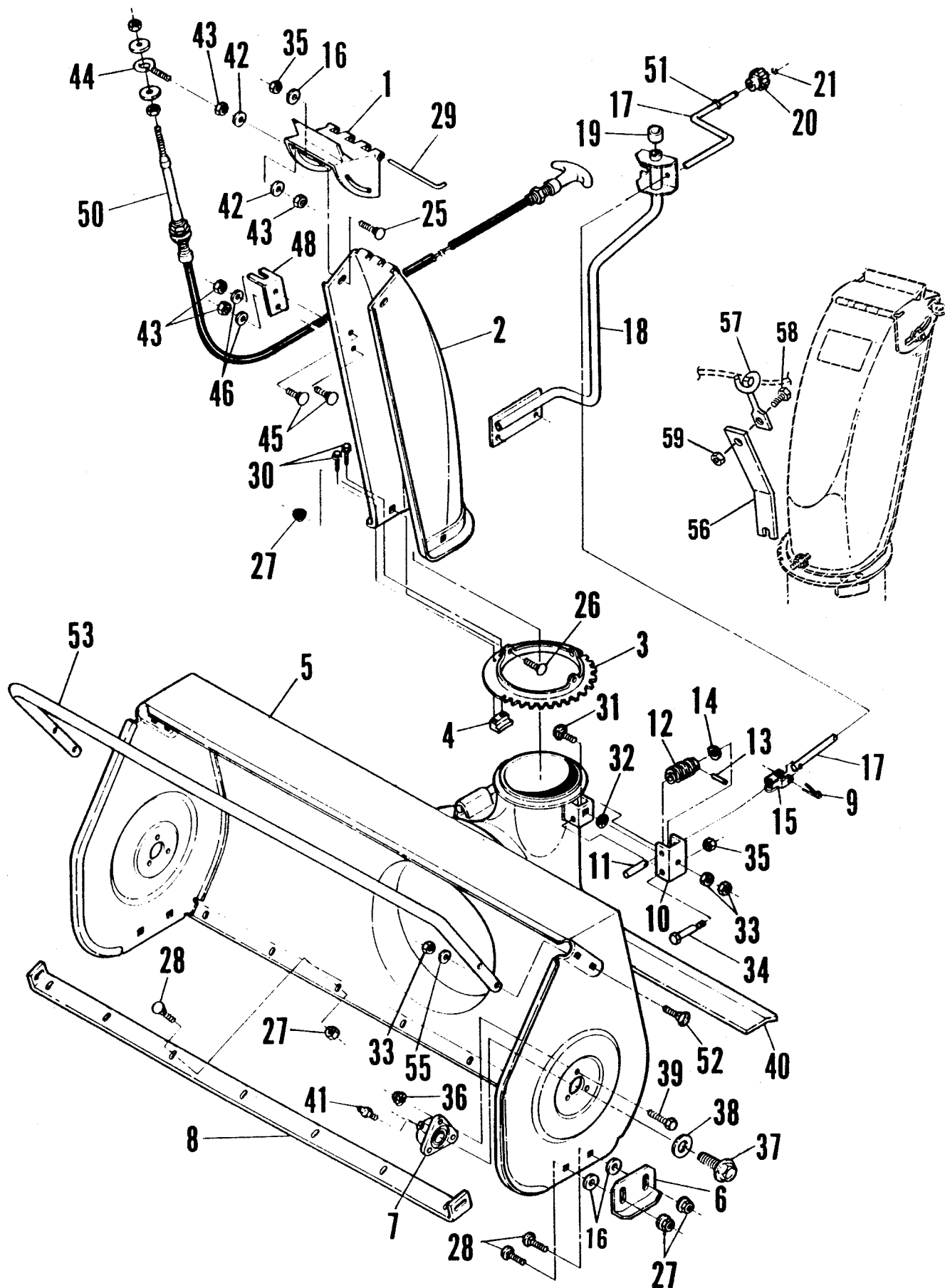


BLOWER & DISCHARGE (FRONT)

ITEM	PART NO.	DESCRIPTION
1	1-7066	DEFLECTOR, Discharge
2	5-2011	CHUTE & DECAL ASS'Y.
3	4-7855	RING, Chute
4	1-1938	RETAINER, Chute Ring (3)
5	5-2010	HOUSING & DECAL ASS'Y.
6	3-7982	SHOE, Skid (2)
*7	5-1350	BEARING, Auger Shaft (Includes 1-0817 Grease Fitting) (2)
8	3-6260	BLADE, Scraper
9	9-0042	PIN, 1/8 x 1 1/4" Cotter
-	5-1773	ASSEMBLY, Worm Bracket (Includes Items 10 thru 15)
10	3-7963	BRACKET, Worm
11	2-1852	SHAFT, Worm
12	2-1828	WORM
13	1-4001	ROLL-PIN, 1/8 x 3/4" (2)
14	1-1079	WASHER, Spring Steel
15	3-2126	CONNECTOR
**16	9-0188	WASHER, 5/16" Flat (2)
***—	9-0176	WASHER, 5/16" Flat (2)
17	1-4671	CRANK, Chute
18	4-9795	BRACE, Chute Crank
19	1-0153	CAP, Crank Brace
20	1-3901	KNOB, Chute Crank
21	9-0184	NUT, 5/16 - 18 Hex Lock
22	1-6648	DECAL, SNAPPER (Not Shown)
23	1-6578	DECAL, Collector Warning (Not Shown)
24	1-4929	DECAL, Deflector Warning (Not Shown)
**25	9-0233	SCREW, 5/16 - 24 x 3/4" Hex Head Cap
***—	9-1021	SCREW, 5/16 - 24 x 3/4" Hex Head Cap
**26	9-0605	BOLT, 5/16 - 18 x 5/8" Carriage (3)
***—	9-1077	BOLT, 5/16 - 18 x 5/8" Carriage (3)
**27	9-0585	NUT, 5/16 - 18 Hex Flange Lock (13)
***—	9-1070	NUT, 5/16 - 18 Hex Flange Lock (13)
28	9-0001	BOLT, 5/16 - 18 x 3/4" Carriage (11)
29	1-5138	PIN, Hinge
**30	9-0363	SCREW, #10 - 24 x 5/8" Self-Tapping (6)
***—	9-1075	SCREW, #10 - 24 x 5/8" Self-Tapping (6)
31	9-0208	BOLT, 5/16 - 18 x 1" Carriage (2)
32	1-1791	RETAINER, Bolt
33	9-0196	NUT, 5/16 - 18 Hex (6)
34	9-0246	SCREW, 5/16 - 24 x 2 1/2" Hex Head Cap
**35	9-0222	NUT, 5/16 - 24 Hex Lock (2)
***—	9-0174	NUT, 5/16 - 24 Hex Lock (2)
36	9-0583	NUT, 1/4 - 20 Hex Flange Lock
37	9-0815	SCREW, 3/8 - 16 x 3/4" Self Tap
38	1-3866	WASHER, 3/8" Flat (2)
39	9-0699	BOLT, 1/4 - 20 x 3/4" Hex Flange Lock (6)
40	3-8408	BAR, Stiffener
41	1-0817	FITTING, Grease (2)
**42	9-0598	WASHER, 1/4" Flat (2)
***—	9-1098	WASHER, 1/4" Flat (2)
**43	9-0063	NUT, 1/4 - 20 Hex
***—	9-1100	NUT, 1/4 - 20 Hex
44	2-3798	BOLT, 1/4 - 20 Eye
**45	9-0005	BOLT, 1/4 - 20 x 1/2" Carriage (2)
***—	9-1064	BOLT, 1/4 - 20 x 1/2" Carriage (2)

CONTINUED ON NEXT PAGE

BLOWER & DISCHARGE (FRONT) (continued)



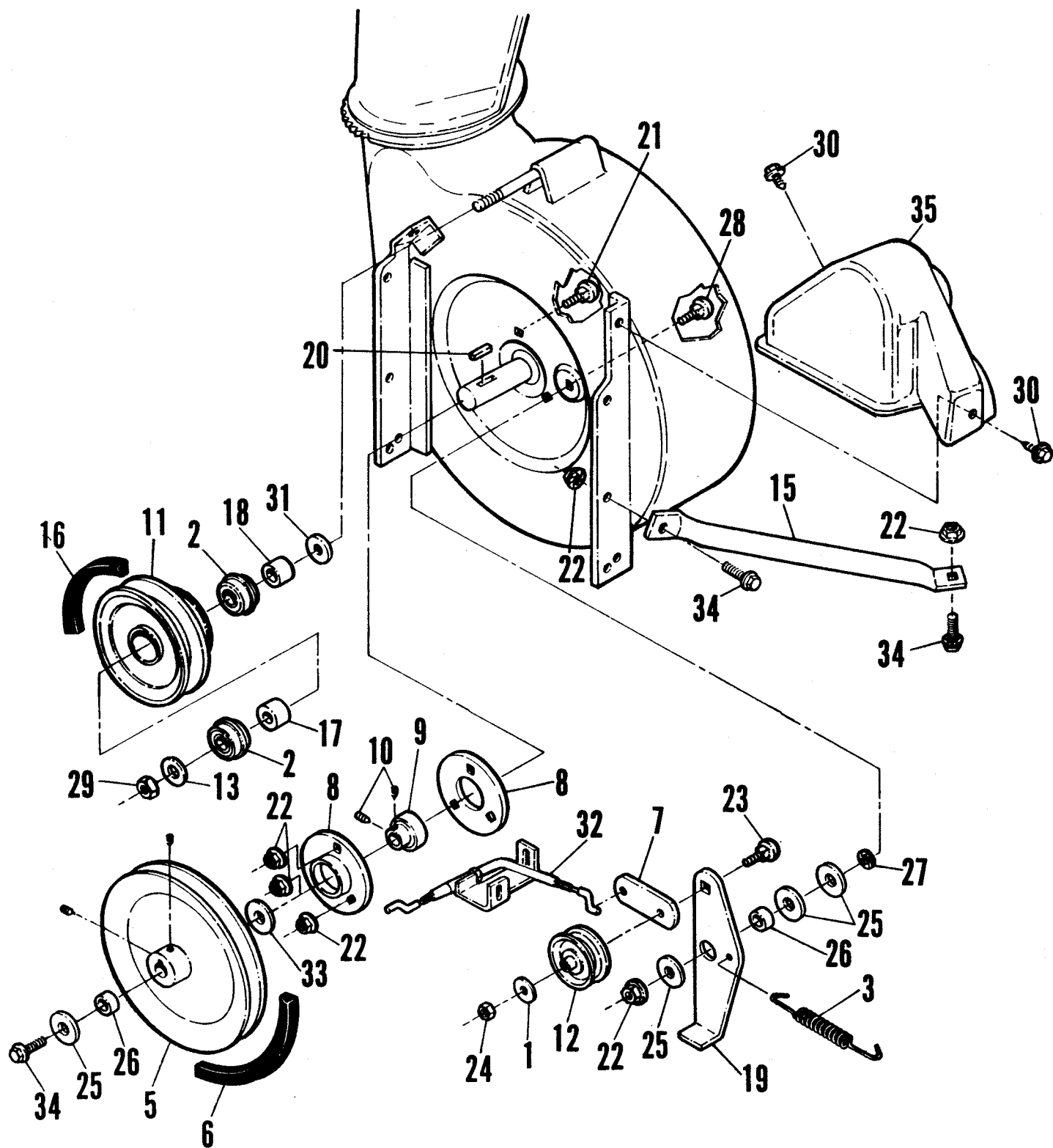
BLOWER & DISCHARGE (FRONT) (continued)

ITEM	PART NO.	DESCRIPTION
**46	9-0053	WASHER, 1/4" Internal Tooth Lock (2)
***—	9-1023	WASHER, 1/4" Internal Tooth Lock (2)
47	1-3923	DECAL, Instruction (Not Shown)
48	3-2813	MOUNT, Cable
**49	9-0372	NUT, 1/4 - 20 Hex Center Lock
***—	9-1099	NUT, 1/4 - 20 Hex Center Lock
50	1-9161	CABLE, Control
51	1-2117	BUSHING
52	2-3273	BOLT, 5/16 - 18 x 1 1/2" Curved Head (4)
53	3-6262	DRIFT CUTTER
54	2-3802	DECAL, Chute Control (Not Shown)
55	9-0187	WASHER, 5/16" Split Lock (4)
56	3-4088	BRACKET, Cable Support
57	2-2779	BRACKET, Pull Rope
58	7-9405	SCREW, 1/4-20 x 5/8" Hex Head Cap
59	9-1099	NUT, 1/4-20 Hex Center Lock

CONTINUED FROM PREVIOUS PAGE

- * Also Shown on Page 2.
- ** NOTE: These parts used on '90 Models & earlier.
- *** NOTE: These parts are black zinc coated and are used on '91 Models & later.

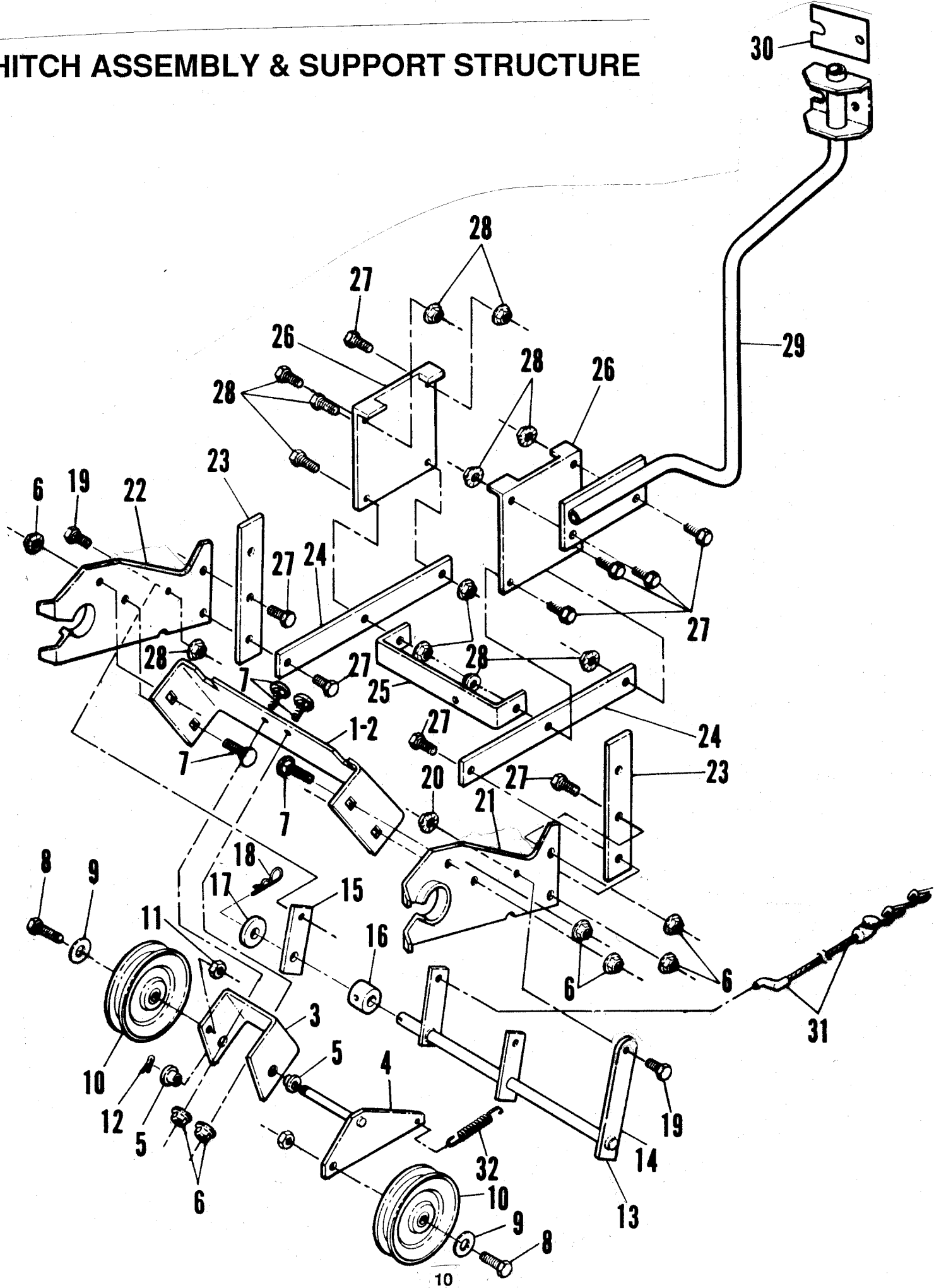
BLOWER & DISCHARGE (REAR VIEW)



BLOWER & DISCHARGE (REAR VIEW)

ITEM	PART NO.	DESCRIPTION
1	9-0122	WASHER, .406 x .812 x .080
2	1-0756	BEARING (2)
3	2-3887	SPRING, 4"
4	1-3867	PULLEY, 8.36" O.D. (Includes Item 5)
5	---	SCREW, 5/16 Socket Head Set (2)
6	2-3282	V-BELT, 35.24
7	3-2773	CABLE LINK
8	1-3931	HOUSING, Bearing (2)
9	1-3924	BEARING (Includes Item 10)
10	---	SCREW, #10 - 32 Socket Head Set (2)
11	1-6581	SHEAVE, Reduction
12	1-3850	IDLER, 2.47" O.D.
13	1-5992	WASHER, .635 x .985 x .05
14	3-6269	BRACE, L.H. (Not Shown)
15	3-6270	BRACE, R.H.
16	1-9380	V-BELT 68-1/2"(Engine Drive)(was 2-3576, 68")
17	2-1849	SPACER, .64 x .88 x .765
18	2-3642	SPACER, .64 x .88 x 1.42
19	5-7605	ARM, Idler Ass'y.
20	1-2830	KEY, 3/16 Sq. x 3/4 Lg.
21	9-0001	BOLT, 5/16 - 18 x 3/4" Short Neck Carriage (3)
22	9-0585	NUT, 5/16 - 18 Hex Flange Lock (6)
23	9-0964	BOLT, 3/8 - 16 x 1 1/2" Carriage (Flat Hd)
24	9-0499	NUT, 3/8 - 16 Hex Lock
25	1-3848	WASHER, .33 x 1.25 x .09 (4)
26	1-3849	SPACER, .328 x .63 x .156 (2)
27	1-1791	BOLT, Retainer (2)
28	9-0383	BOLT, Carriage Short Neck, 5/16 - 18 x 1
29	9-0356	NUT, 5/8 - 18 Hex Lock
30	9-0368	SCREW, 5/16 - 18 x 3/4" Hex Thread Forming (2)
31	9-0183	WASHER, .656 x 1.31 x .094
32	2-3628	CONTROL CABLE
33	2-3641	SPACER, .766 x .25
34	9-0595	SCREW, 5/16 - 18 x 5/8 Flange Lock (3)
35	1-7047	COVER, Belt

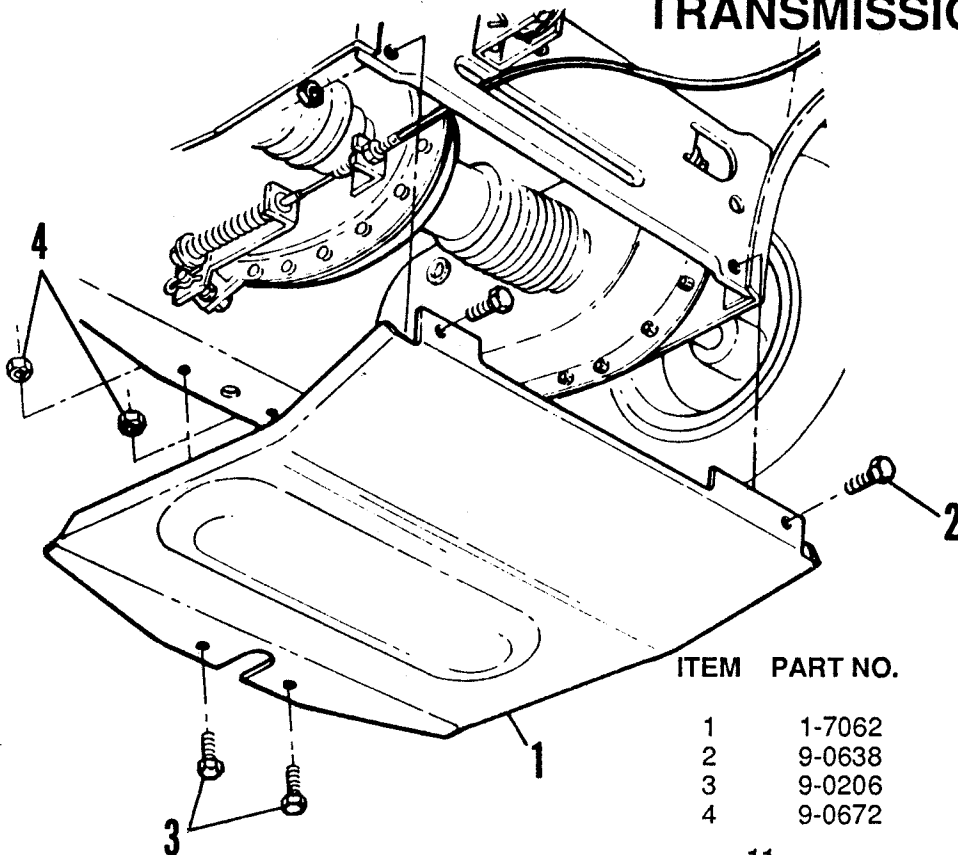
HITCH ASSEMBLY & SUPPORT STRUCTURE



HITCH ASSEMBLY & SUPPORT STRUCTURE

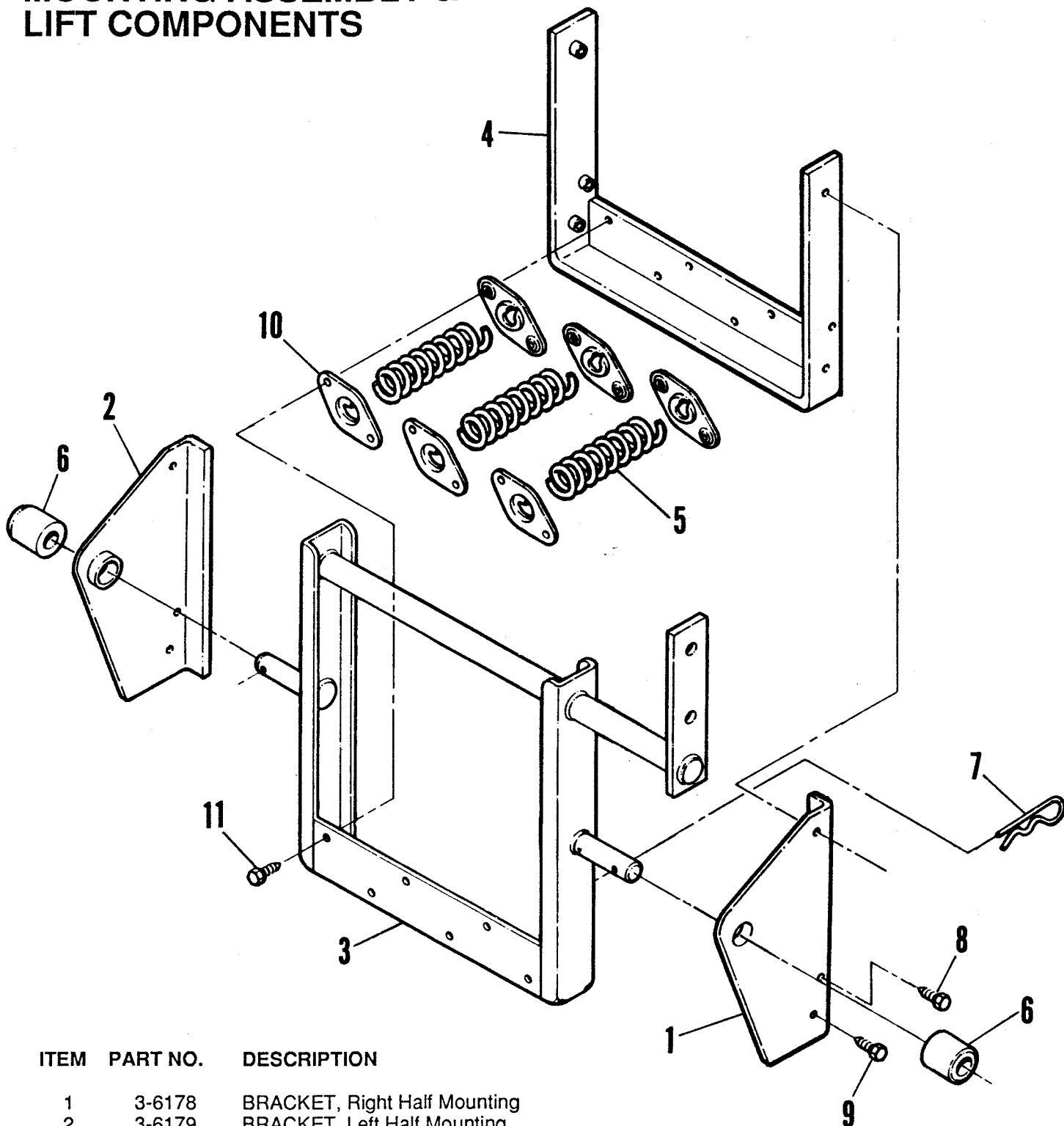
ITEM	PART NO.	DESCRIPTION
1	5-7580	IDLER ASSEMBLY (Includes Items 2 Thru 12)
2	3-8434	HITCH BRACE
3	3-8435	IDLER SUPPORT
4	4-0588	IDLER ARM STR.
5	1-1016	BEARING (2)
6	9-0613	NUT, 3/8 - 16 Flange Lock (11)
7	9-0850	BOLT, 3/8 - 16 x 3/4 Short Neck Carriage (7)
8	9-0655	BOLT, 3/8 - 16 x 1 1/2 Hex Head Cap (2)
9	9-0122	WASHER, 3/8 (2)
10	1-1029	IDLER (2)
11	9-0546	NUT, 3/8 - 16 Hex Cap Lock (2)
12	9-0041	PIN, 1/8 x 1 Cotter
13	5-7590	CLUTCH PIVOT ASSEMBLY (Includes Items 14 Thru 18)
14	4-7963	STRUCTURE, Clutch Engagement
15	3-2807	PLATE, Fastening
16	1-4100	SPACER
17	9-0991	WASHER, Flat
18	9-0038	COTTER PIN
19	9-0206	SCREW, 5/16 - 18 x 3/4 Hex Head Cap (2)
20	9-0585	NUT, 5/16 - 18 Flange Lock (2)
21	4-7950	HITCH, L.H. } KIT (6-1324) has deeper
22	4-7949	HITCH, R.H. } notches for head clearance
23	3-2726	HANGER BAR (2)
24	3-8400	SIDE TIE BAR (2)
25	3-8431	CROSS BRACE
26	3-8399	HANGER PLATE (2)
27	9-0582	BOLT, 3/8 - 16 x 1 Hex Flange Lock (12)
28	9-0613	NUT, 3/8 - 16 Hex Flange Lock (8)
29	4-9795	BRACE, Chute Crank
30	2-3802	DECAL, Chute Control
31	2-3693	CABLE, PTO (Assembly)
32	1-4513	SPRING, 6.5"

TRANSMISSION ICE SHIELD PARTS



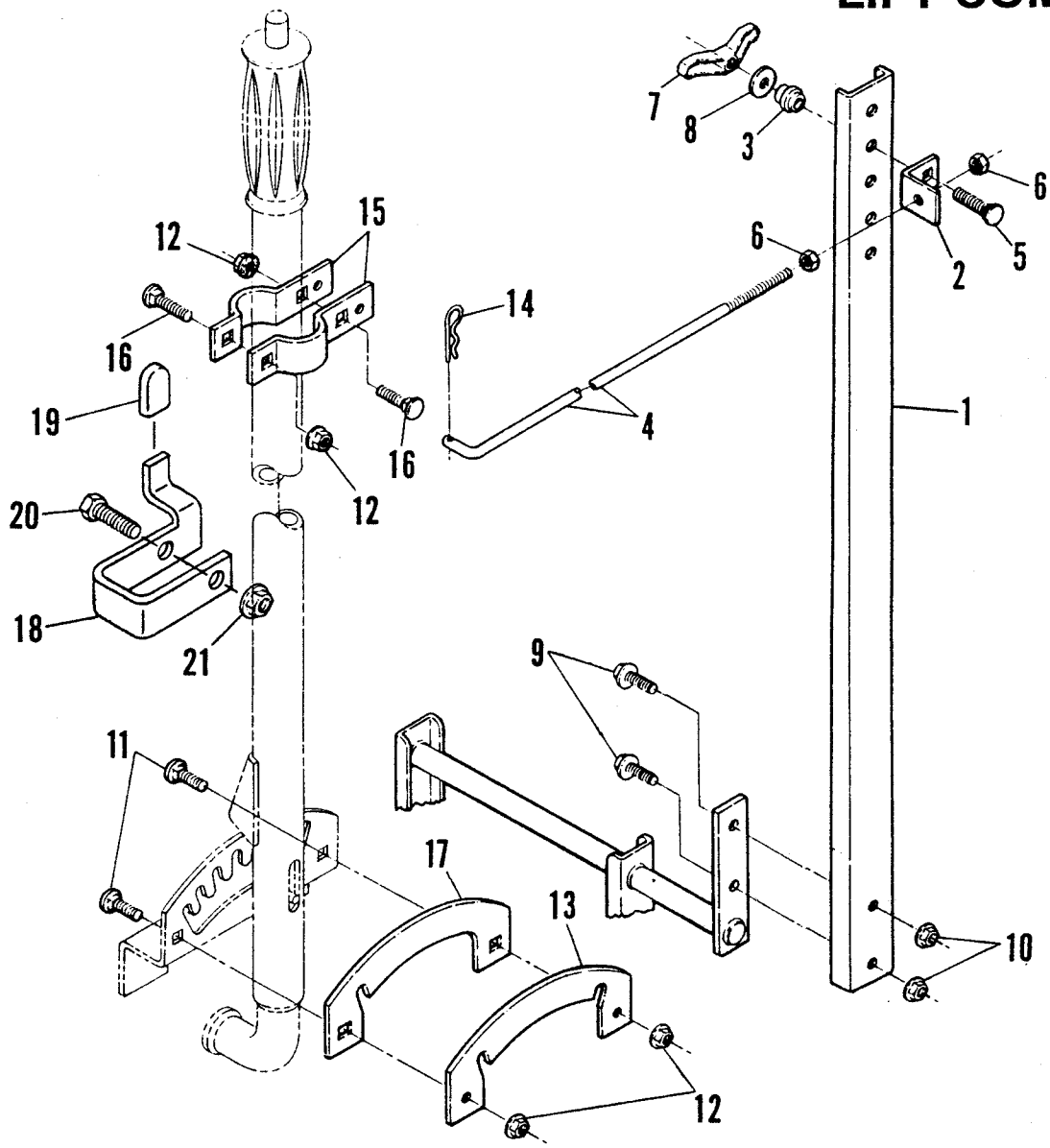
ITEM	PART NO.	DESCRIPTION
1	1-7062	SHIELD, Ice
2	9-0638	SCREW, 5/16 - 18 x 5/8, Self-tapping (2)
3	9-0206	SCREW, 5/16 - 18 x 3/4 Hex Head Cap (2)
4	9-0672	LOCKNUT, 5/16 - 18 Hex Flange Top (2)

MOUNTING ASSEMBLY & LIFT COMPONENTS



ITEM	PART NO.	DESCRIPTION
1	3-6178	BRACKET, Right Half Mounting
2	3-6179	BRACKET, Left Half Mounting
3	4-9976	STRUCTURE, Lift Yoke
4	4-9738	STRUCTURE, Spring Strap
5	2-3213	SPRING (3)
6	2-1988	BUSHING, Hitch (2)
7	1-3844	PIN, Cotter - Hair (2)
8	9-0369	SCREW, 5/16 - 18 x 1 Hex Thread Forming (2)
9	9-0638	SCREW, 5/16 - 18 x 3/4 Hex Thread Forming (4)
10	3-8392	RETAINER SPRING (6)
11	9-0539	SCREW, 3/4 - 20 x 1/2 Self Tap (12)

LIFT COMPONENTS



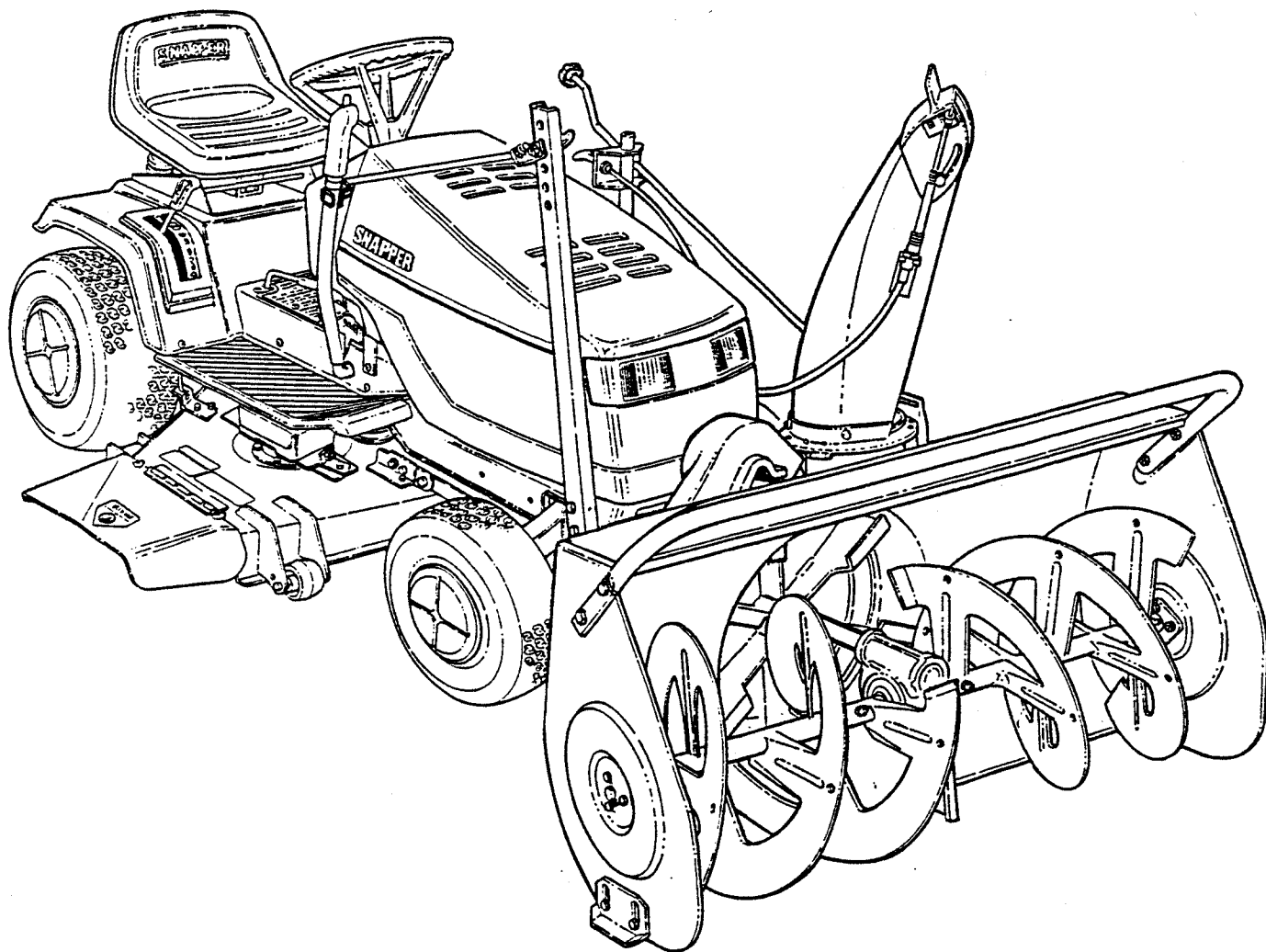
ITEM	PART NO.	DESCRIPTION
1	3-6185	ARM, Lift
2	3-2522	SWIVEL, Lift Rod
3	1-5515	SPACER
4	3-2834	ROD, Lift
5	9-0790	BOLT, 5/16-18 x 2-1/2" Short Neck Carriage
6	9-0130	NUT, 3/8-16 Hex (2)
7	1-4468	NUT, 5/16-18 Wing
8	1-3848	WASHER, 5/16 x 1-1/4" O.D.
9	9-0622	SCREW, 1/2-13 x 1" Hex Flange Lock (2)
10	9-0619	NUT, 1/2-13 Hex Flange Lock (2)
11	9-0803	BOLT, 1/4-20 x 5/8" Flat Head Carriage (2)
12	9-0583	NUT, 1/4-20 Hex Flange Lock (4)
13	3-2914	PLATE, Quadrant
14	1-5067	PIN, 3/32 x 1-1/2" Hair
15	3-2763	TAB (2)
16	9-0005	BOLT, 1/4-20 x 1/2" Short Neck Carriage (4)
17	3-3010	PLATE, Quadrant Float
18	2-7943	BRACKET, Hood Prop
19	2-8026	CAP, Vinyl
20	9-1222	SCREW, 1/4-20 x 1-3/4" Hex Head Cap
21	9-1099	NUT, 1/4-20 Hex Center Lock

Parts Manual for

SNAPPER[®]

38" SNOW THROWER ATTACHMENT #80575 *LT SERIES TRACTORS

* (THREE PIECE FRAME ONLY)



IT IS THE POLICY OF SNAPPER TO IMPROVE ITS PRODUCTS WHENEVER IT IS POSSIBLE AND PRACTICAL TO DO SO. WE RESERVE THE RIGHT TO MAKE CHANGES OR ADD IMPROVEMENTS AT ANY TIME WITHOUT INCURRING ANY OBLIGATION TO MAKE SUCH CHANGES ON PRODUCTS MANUFACTURED PREVIOUSLY.

SNAPPER McDonough, GA., 30253 U.S.A.