

## **LARGE FRAME SNOWTHROWERS (MODELS 560, 760, 860, 870 & 1080) INCLUDING ATTACHMENTS & ACCESSORIES**

### **MODEL 560 SNOWTHROWERS**

<b>Mfg. No.</b>	<b>Description</b>
1690543	560, 5HP Snowthrower
1690775	560, 5HP Snowthrower

### **MODEL 760 SNOWTHROWERS**

<b>Mfg. No.</b>	<b>Description</b>
1690544	760, 7HP Snowthrower
1690903	760, 7HP Snowthrower

### **MODEL 860 SNOWTHROWERS**

<b>Mfg. No.</b>	<b>Description</b>
1691023	860, 8HP Snowthrower *
1691024	860, 8HP Snowthrower *

### **MODEL 870 SNOWTHROWERS**

<b>Mfg. No.</b>	<b>Description</b>
1690545	870, 8HP Snowthrower
1690678	870, 8HP Snowthrower *
1690776	870, 8HP Snowthrower
1690778	870, 8HP Snowthrower *

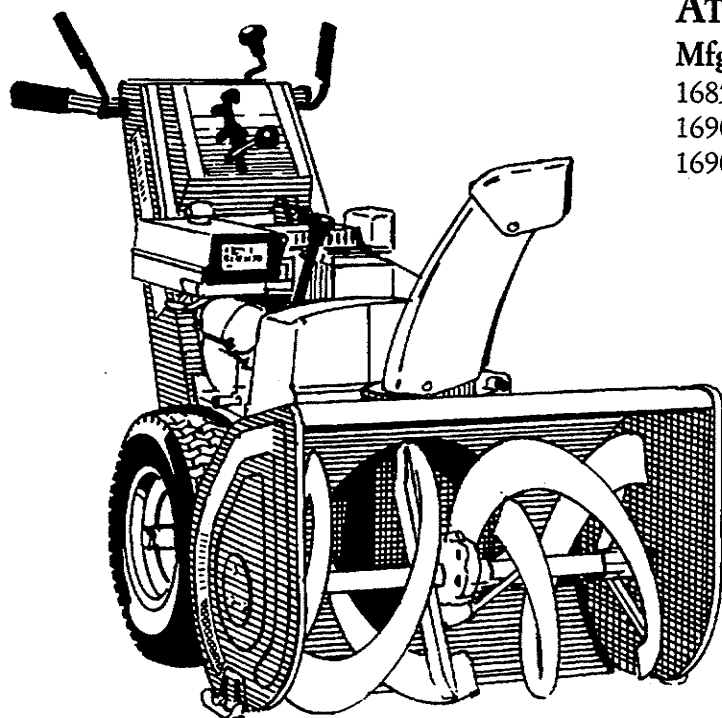
### **MODEL 1080 SNOWTHROWERS**

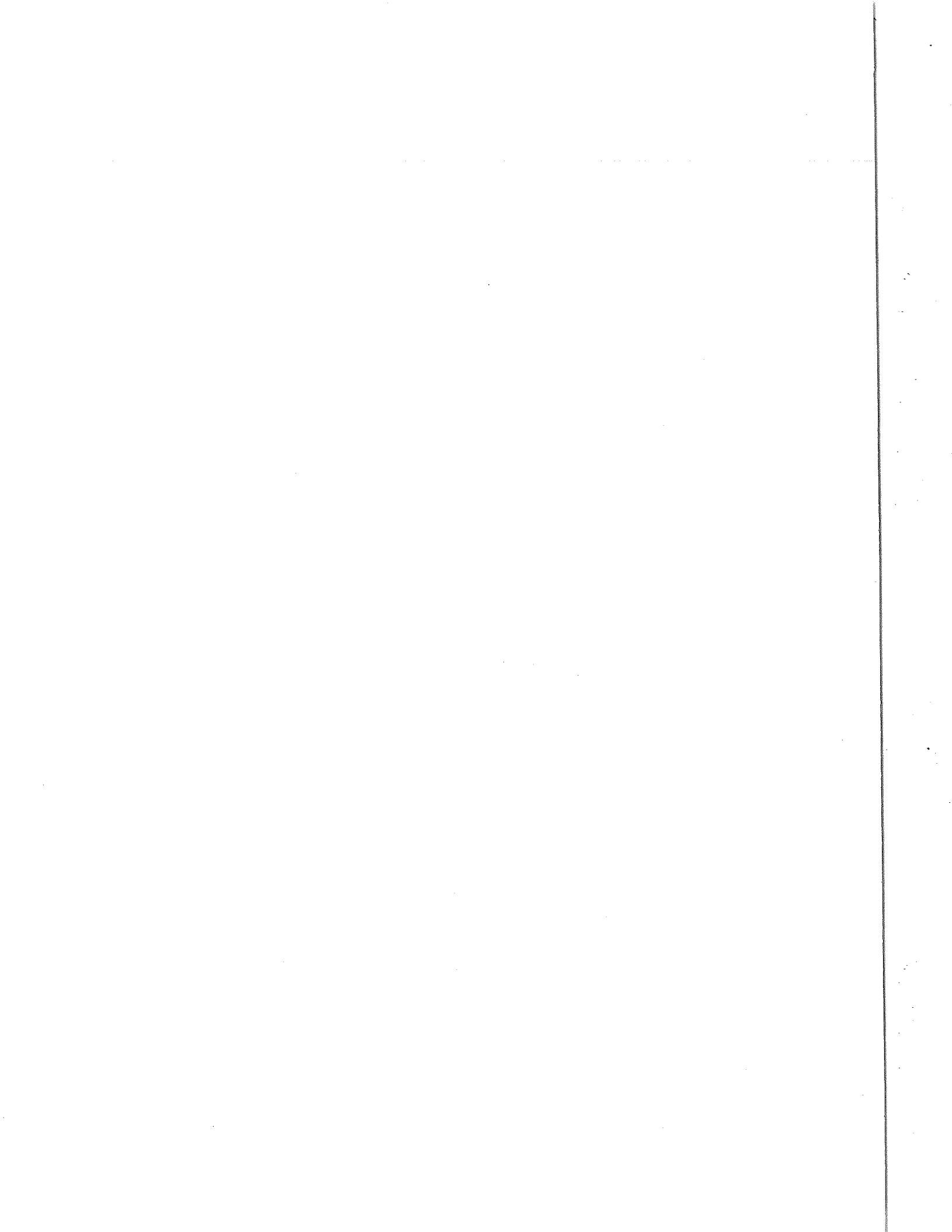
<b>Mfg. No.</b>	<b>Description</b>
1690546	1080, 10HP Snowthrower
1690679	1080, 10HP Snowthrower *
1690777	1080, 10HP Snowthrower
1690779	1080, 10HP Snowthrower *

*\* Equipped for 12 Volt Electric Start Kit.*

### **ATTACHMENTS & ACCESSORIES**

<b>Mfg. No.</b>	<b>Description</b>
1685189	Drift Cutters
1690680	12 Volt Electric Start Kit
1690681	The "PROTECTOR" Snow Cab





# Table of Contents

ENGINE & FRAME GROUP .....	2
HANDLE & CONTROLS GROUP .....	8
TRACTION DRIVE GROUP .....	10
AUGER HOUSING & CHUTE GROUP .....	14
AUGER DRIVE GROUP .....	16
HEADLIGHT GROUP .....	18
DRIFT CUTTER KIT (Mfg. No. 1685189) .....	18
DECAL GROUP .....	20
THE "PROTECTOR®" SNOW CAB (Mfg. No. 1690681) .....	22
12 VOLT ELECTRIC START KIT (Mfg. No. 1690680) .....	24
TIRES & WHEELS GROUP .....	26
TORQUE SPECIFICATION CHART .....	Inside Back Cover

Included in this parts book are the following Manufacturer's Numbers:

MODEL 560 SNOWTHROWER

**MFG. NO. 1690543**

**MFG. NO. 1690775**

MODEL 760 SNOWTHROWER

**MFG. NO. 1690544**

**MFG. NO. 1690903**

MODEL 860 SNOWTHROWER

**\*MFG. NO. 1691023**

**\*MFG. NO. 1691024**

MODEL 870 SNOWTHROWER

**MFG. NO. 1690545**

**\*MFG. NO. 1690678**

**MFG. NO. 1690776**

**\*MFG. NO. 1690778**

MODEL 1080 SNOWTHROWER

**MFG. NO. 1690546**

**\*MFG. NO. 1690679**

**MFG. NO. 1690777**

**\*MFG. NO. 1690779**

THE "PROTECTOR" SNOW CAB

**MFG. NO. 1690681**

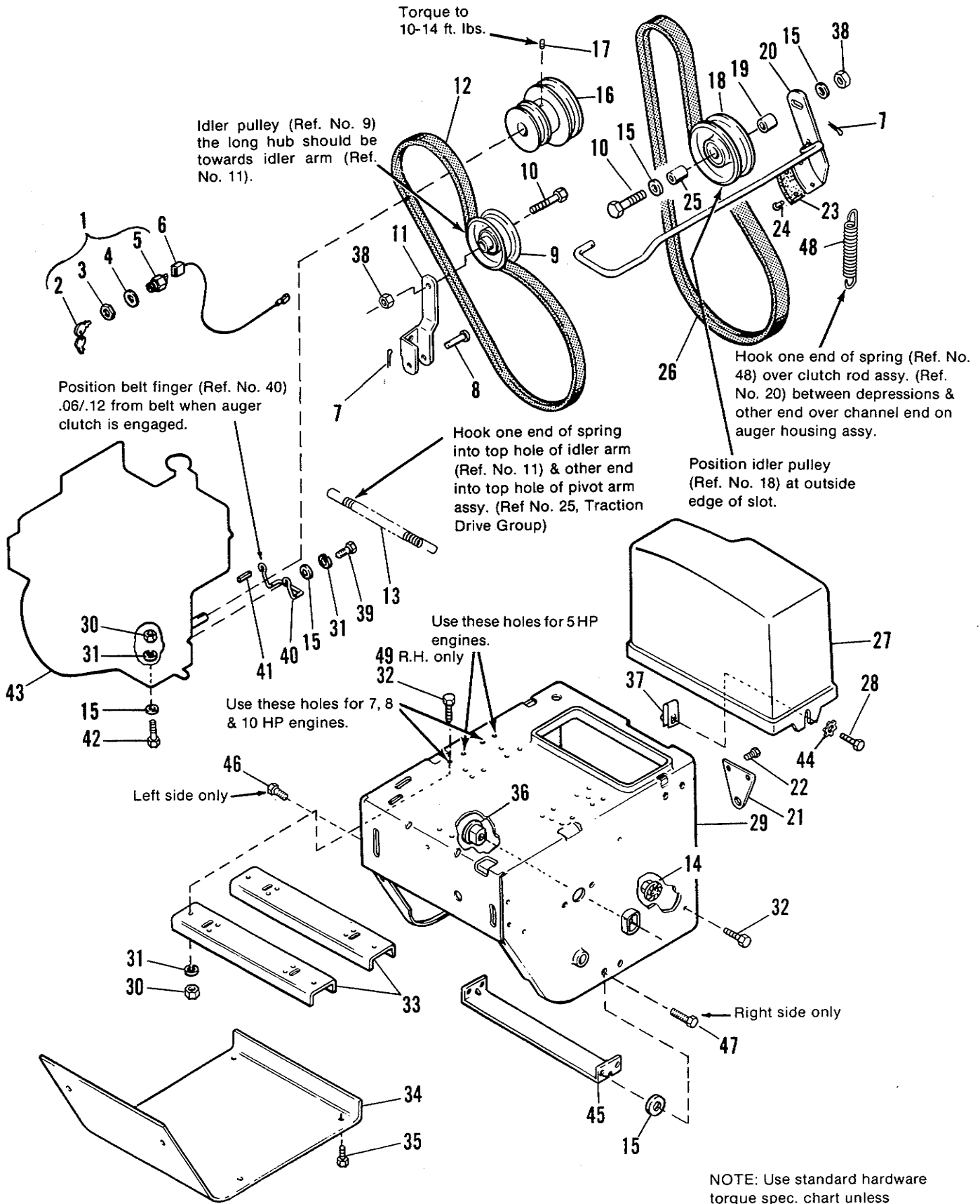
12 VOLT ELECTRIC START KIT

**MFG. NO. 1690680**

DRIFT CUTTERS

**MFG. NO. 1685189**

**\*Equipped for Battery Start**



NOTE: Use standard hardware torque spec. chart unless otherwise noted.

Ref. No.	Part No.	Qty.	Description
1	177163	1	SWITCH, Key (Incl. Ref. Nos. 2, 3, 4 & 5)
2	122203	1	KEYS
3	122234	1	NUT, Hex, 5/8-32
4	918906	1	LOCKWASHER, Int. 5/8
5		1	SWITCH
6	1667700	1	WIRE, Ground
7	918451	2	PIN, Cotter, 1/8 x 3/4
8	1665994	1	PIN
9	1668477	1	PULLEY, Idler
10	921969	2	CAPSCREW, Hex Hd., 3/8-16 x 1-1/2
11	1666205	1	ARM, Idler, Traction
12	**1672732	1	BELT, Traction
	*1666654	1	BELT, Traction
13	**1672735	1	SPRING, Idler
	*1669265	1	SPRING, Idler
14	927557	4	NUT, Hex, Whizlock, 5/16-18
15	917642	8	WASHER, Flat, 5/16
16	1666109	1	PULLEY, Engine
17	928691	1	SETSCREW, Socket Hd., 5/16-18 x 5/16
18	1665434	1	PULLEY ASSY.
19	157081	1	SPACER
20	1668155	1	CLUTCH ROD ASSY. (Incl. Ref. Nos. 23 & 24)
21	1669135	1	BRACKET, Clutch Pivot
22	925003	2	SCREW, Taptite, 1/4-20 x 1/2
23	1669313	1	PAD, Brake
24	925160	2	RIVET, Pop
25	1666294	1	SPACER

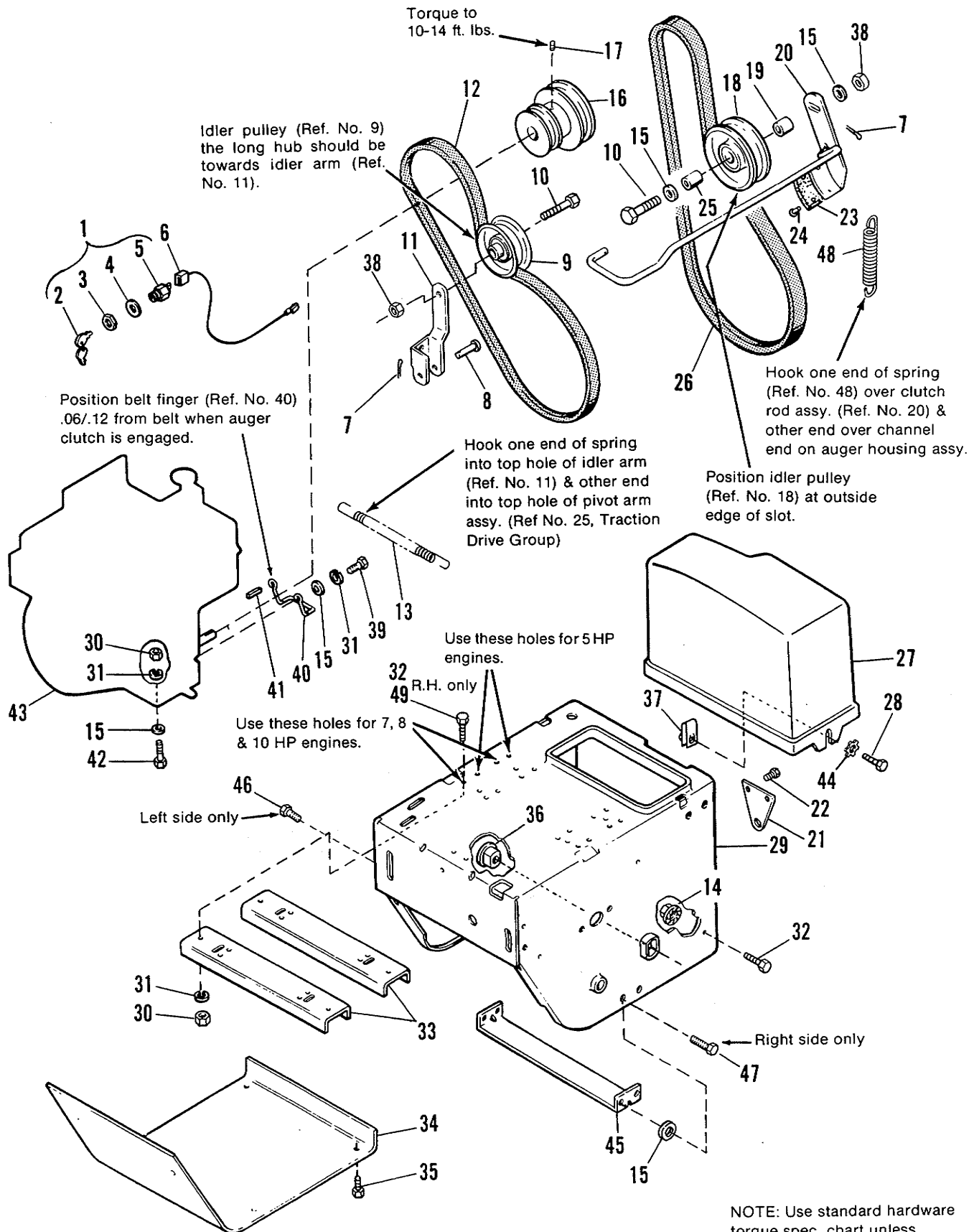
Ref. Nos. 26 through 48 listed on the following page.

**\*EARLY MODELS (Used on)**

Mfg. No. 1690543 before s/n 2287  
 Mfg. No. 1690544 before s/n 1197  
 Mfg. No. 1690545 before s/n 2261  
 Mfg. No. 1690546 before s/n 1131  
 Mfg. No. 1690678 before s/n 1664  
 Mfg. No. 1690679 before s/n 1634  
 Mfg. No. 1690775 before s/n 1908  
 Mfg. No. 1690776 before s/n 1339  
 Mfg. No. 1690777 before s/n 1370  
 Mfg. No. 1690778 before s/n 1643  
 Mfg. No. 1690779 before s/n 1370

**\*\*LATER MODELS (Used on)**

Mfg. No. 1690543 after s/n 2286  
 Mfg. No. 1690544 after s/n 1196  
 Mfg. No. 1690545 after s/n 2260  
 Mfg. No. 1690546 after s/n 1130  
 Mfg. No. 1690678 after s/n 1663  
 Mfg. No. 1690679 after s/n 1633  
 Mfg. No. 1690775 after s/n 1907  
 Mfg. No. 1690776 after s/n 1338  
 Mfg. No. 1690777 after s/n 1369  
 Mfg. No. 1690778 after s/n 1642  
 Mfg. No. 1690779 after s/n 1369  
 All Mfg. No. 1690903



Ref. No.	Part No.	Qty.	Description
26	1666655	1	BELT, Auger Drive
27	1667516	1	GUARD, Belt
28	918249	2	SCREW, Truss Hd., 5/16-18 x 3/4
29	****1673993	1	FRAME, Main (Later Models - see below)
	*****1685254	1	FRAME, Main (Early Models - see below)
30	917372	8	NUT, Hex, 5/16-18
31	917356	10	LOCKWASHER, 5/16
32	930591	6	CAPSCREW, Whizlock, 5/16-18 x 3/4 (Qty. 8 on 1690543 & 1690775)
33	1668766	2	BRACKET, Engine Mounting
34	1666374	1	COVER, Bottom
35	927428	6	SCREW, Taptite, 1/4-20 x 3/8
36	1666001	2	BUSHING, Axle
37	935255	2	NUT, Pal, 5/16-18
38	928731	2	LOCKNUT, Jam, 3/8-16
39	921515	2	CAPSCREW, Hex Hd., 5/16-24 x 3/4
40	1668174	1	BELT FINGER
41	8221042	1	KEY, 3/16 x 3/16 x 1-1/2
42	922127	4	CAPSCREW, Hex Hd., 5/16-18 x 1-3/4
43	See Note Below	1 1 1 1	ENGINE, Tecumseh, 5 H.P. ENGINE, Tecumseh, 7 H.P. ENGINE, Tecumseh, 8 H.P. ENGINE, Tecumseh, 10 H.P.
44	920426	2	LOCKWASHER, Ext. Tooth, 5/16
45	1669198	1	SUPPORT, Tie Bar
46	928729	2	SCREW, Taptite, 5/16-18 x 3/8 (left side only)
47	925359	2	SCREW, Taptite, 5/16-18 x 3/4 (right side only)
48	1669837	1	SPRING, Brake
49	***921332	2	CAPSCREW, Hex Hd., 5/16-18 x 3/4

Ref. Nos. 1 through 25 listed on preceding page.

\*\*\*Used on all models except 1690543 & 1690775

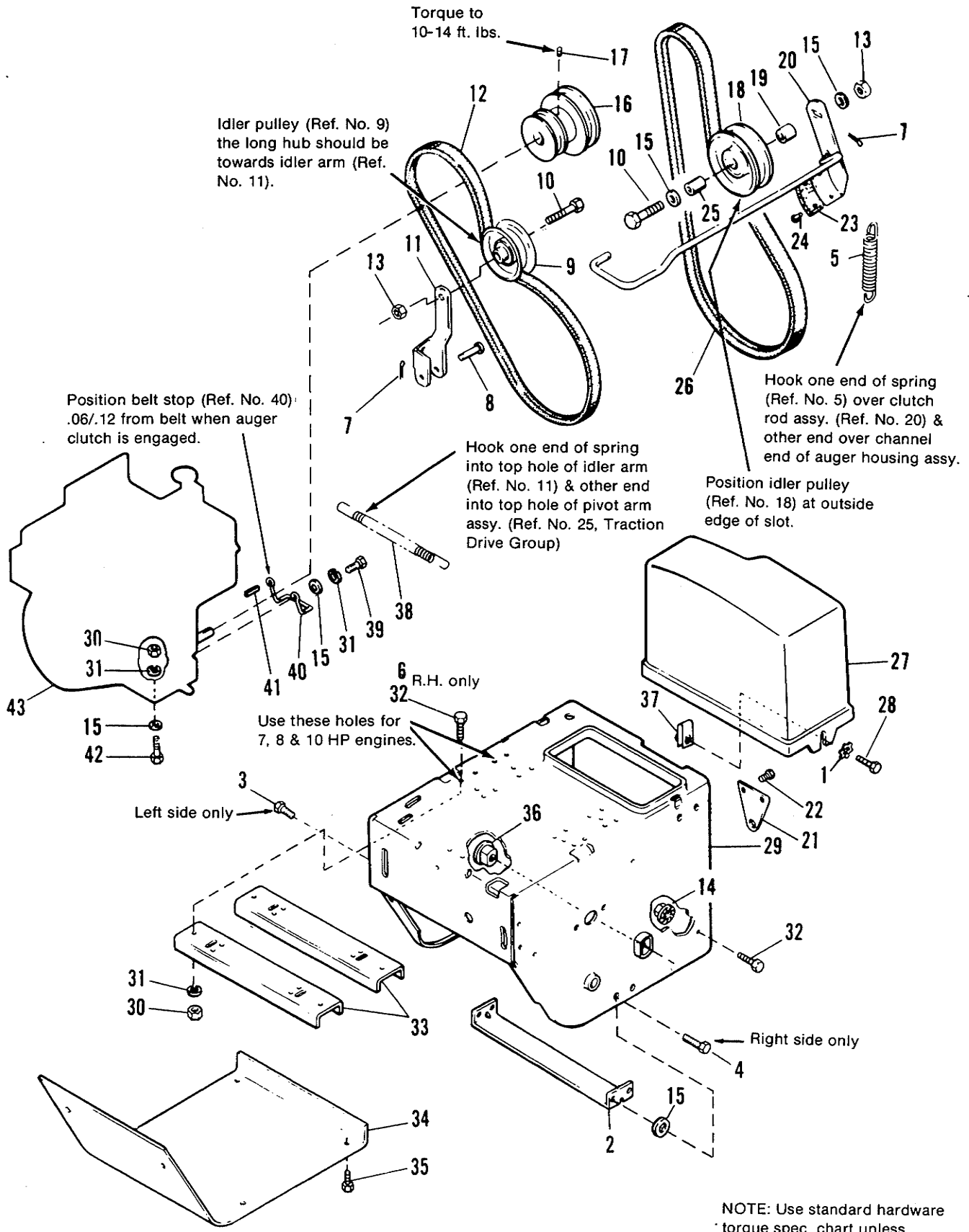
\*\*\*\*\*EARLY MODELS (Used on)

Mfg. No. 1690543 before s/n 2287  
Mfg. No. 1690544 before s/n 1197  
Mfg. No. 1690545 before s/n 2261  
Mfg. No. 1690546 before s/n 1771  
Mfg. No. 1690678 before s/n 1664  
Mfg. No. 1690679 before s/n 1634  
Mfg. No. 1690775 before s/n 5144  
Mfg. No. 1690776 before s/n 3595  
Mfg. No. 1690777 before s/n 1658  
Mfg. No. 1690778 before s/n 1824  
Mfg. No. 1690779 before s/n 1420  
Mfg. No. 1690903 before s/n 1960

\*\*\*\*LATER MODELS (Used on)

Mfg. No. 1690543 after s/n 2286  
Mfg. No. 1690544 after s/n 1196  
Mfg. No. 1690545 after s/n 2260  
Mfg. No. 1690546 after s/n 1770  
Mfg. No. 1690678 after s/n 1663  
Mfg. No. 1690679 after s/n 1633  
Mfg. No. 1690775 after s/n 5143  
Mfg. No. 1690776 after s/n 3594  
Mfg. No. 1690777 after s/n 1657  
Mfg. No. 1690778 after s/n 1823  
Mfg. No. 1690779 after s/n 1419  
Mfg. No. 1690903 after s/n 1959

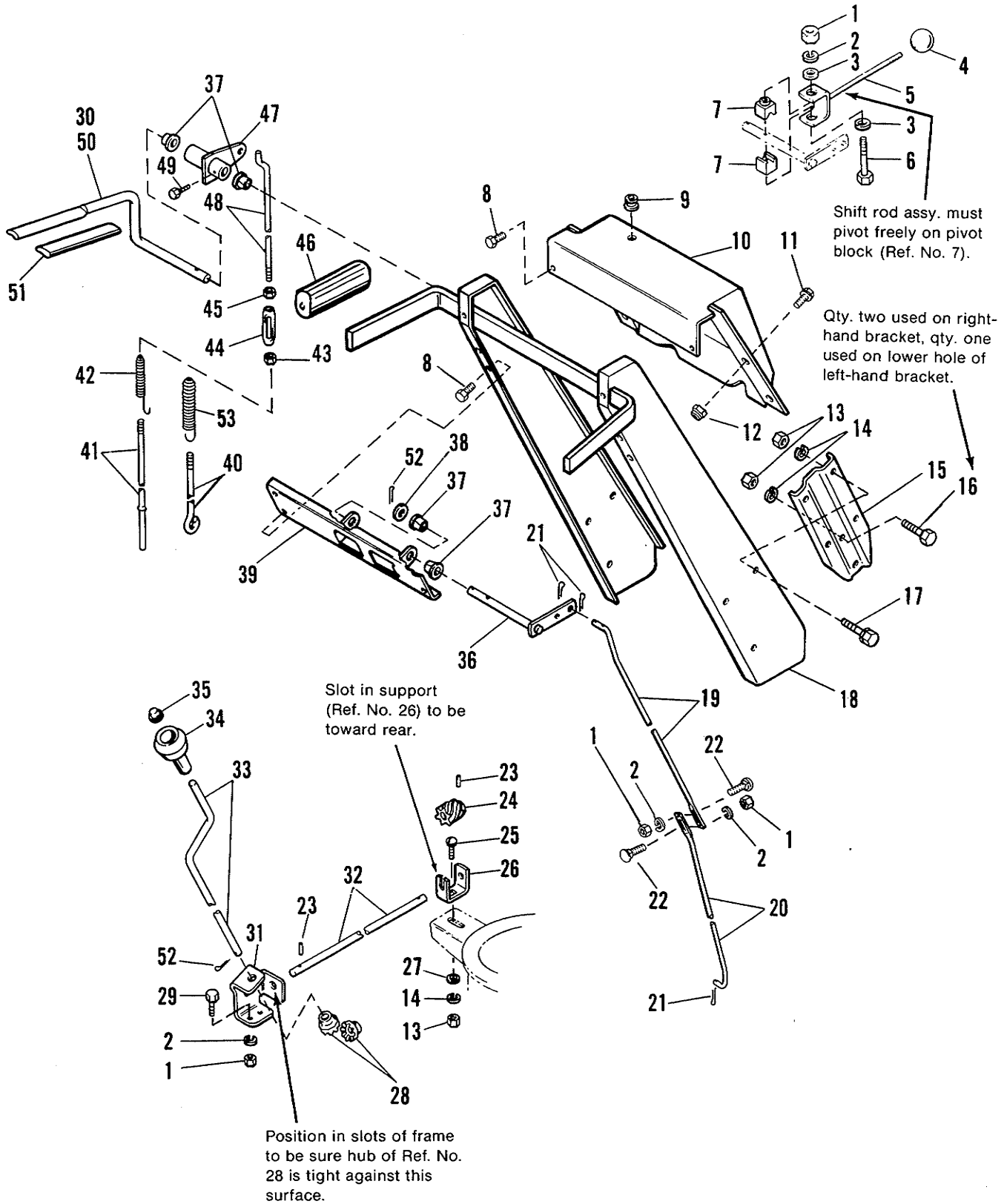
NOTE: Use *Simplicity* Brand SAE 5W-30 Cold Weather Engine Oil, Part #1685518 (12 qts/case)





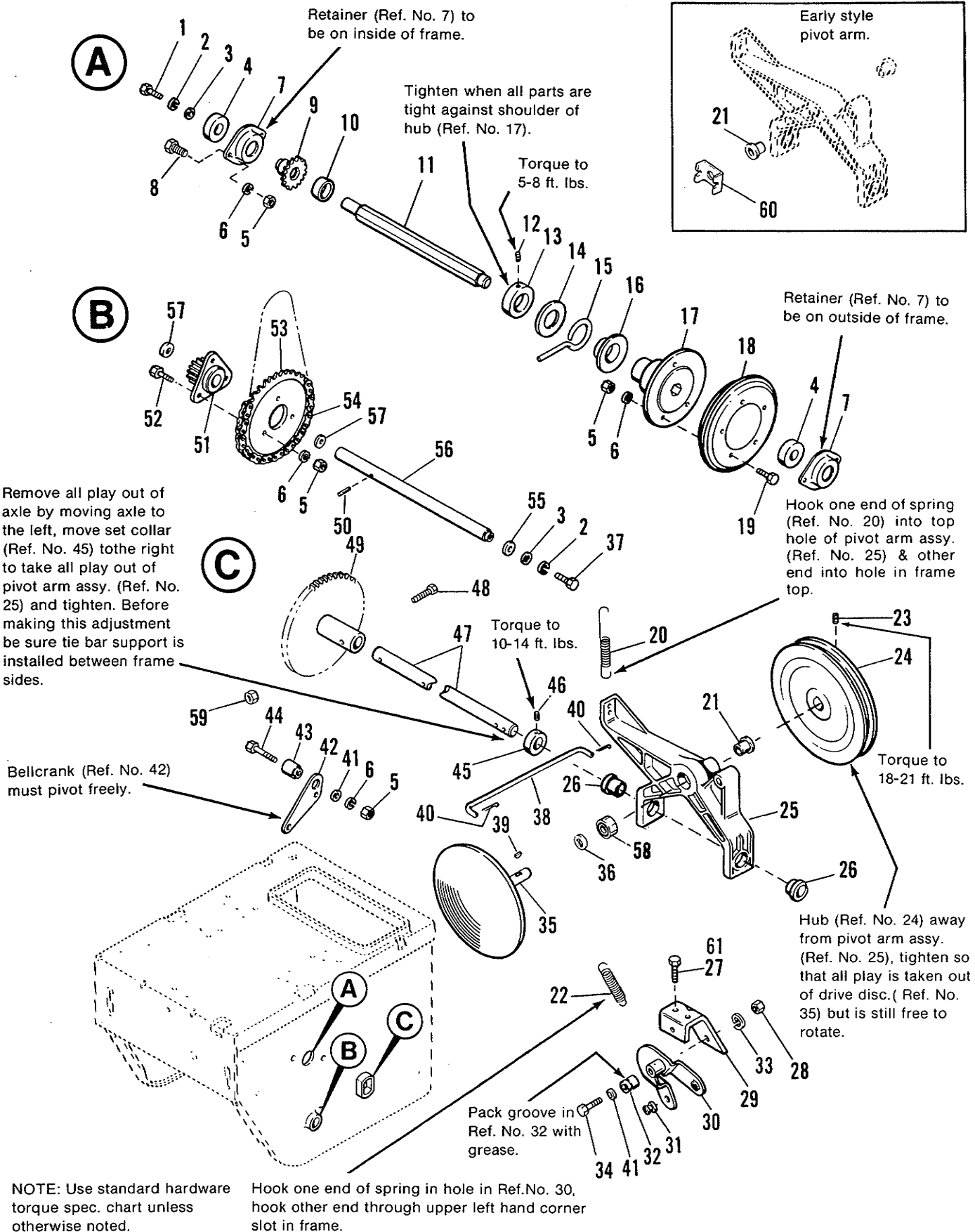
Ref. No.	Part No.	Qty.	Description
1	920426	2	LOCKWASHER, Ext. Tooth, 5/16
2	1669198	1	SUPPORT, Tie Bar
3	928729	2	SCREW, Taptite, 5/16-18 x 3/8 (left side only)
4	925359	2	SCREW, TAPTITE, 5/16-18 x 3/4 (ride side only)
5	1669837	1	SPRING, Brake
6	921332	2	CAPSCREW, Hex Hd., 5/16-18 x 3/4
7	918451	2	PIN, Cotter, 1/8 x 3/4
8	1665994	1	PIN
9	1668477	1	PULLEY, Idler
10	921969	2	CAPSCREW, Hex Hd., 3/8-16 x 1-1/2
11	1666205	1	ARM, Idler, Traction
12	1676461	1	BELT, Traction
13	928731	2	LOCKNUT, Jam, 3/8-16
14	927557	4	NUT, Hex, Whizlock, 5/16-18
15	917642	4	WASHER, Flat, 5/16
16	1676493	1	PULLEY, Engine
17	928691	1	SETSCREW, Socket Hd., 5/16-18 x 5/16
18	1665434	1	PULLEY ASSY.
19	157081	1	SPACER
20	1668155	1	CLUTCH ROD ASSY. (Incl. Ref. Nos. 23 & 24)
21	1669135	1	BRACKET, Clutch Pivot
22	925003	2	SCREW, Taptite, 1/4-20 x 1/2
23	1669313	1	PAD, Brake
24	925160	2	RIVET, Pop
25	1666294	1	SPACER
26	1676460	1	BELT, Auger Drive
27	1667516	1	GUARD, Belt
28	918249	2	SCREW, Truss Hd., 5/16-18 x 3/4
29	1673993	1	FRAME, Main
30	917372	8	NUT, Hex, 5/16-18
31	917356	10	LOCKWASHER, 5/16
32	930591	6	CAPSCREW, Whizlock, 5/16-18 x 3/4
33	1668766	2	BRACKET, Engine Mounting
34	1666374	1	COVER, Bottom
35	927428	6	SCREW, Taptite, 1/4-20 x 3/8
36	1666001	2	BUSHING, Axle
37	935255	2	NUT, Pal, 5/16-18
38	1672735	1	SPRING, Idler
39	921515	2	CAPSCREW, Hex Hd., 5/16-24 x 3/4
40	1676494	1	BELT STOP
41	905856	1	KEY, 1/4 x 1/4 x 1-1/2
42	922127	4	CAPSCREW, Hex Hd., 5/16-18 x 1-3/4
43	See Note Below	1	ENGINE, Briggs & Stratton, 8 HP

**NOTE: Use *Simplicity* Brand SAE 5W-30 Cold Weather Engine Oil, Part #1685518 (12 qts/case)**



NOTE: Use standard hardware torque spec. chart unless otherwise noted.

Ref. No.	Part No.	Qty.	Description
1	916622	5	NUT, Hex, 1/4-20
2	916964	5	LOCKWASHER, 1/4
3	917377	2	WASHER, Flat, 1/4
4	8021050	1	KNOB
5	1668523	1	SHIFT ROD ASSY.
6	921159	1	CAPSCREW, Hex Hd., 1/4-20 x 2-1/4
7	1668524	2	BLOCK, Pivot
8	925003	6	SCREW, Taptite, 1/4-20 x 1/2
9	1667588	1	BUSHING, Plastic
10	1667800	1	DASH, Handle
11	935450	4	CAPSCREW, Washer hd., 1/4-20 x 3/4
12	920397	4	NUT, Nylon Lock, 1/4-20
13	917372	10	NUT, Hex, 5/16-18
14	917356	10	LOCKWASHER, 5/16
15	1667806	2	BRACKET, Handle Mtg.
16	921332	3	CAPSCREW Hex Hd., 5/16-18 x 3/4
17	930591	6	CAPSCREW, Whizlock, 5/16-18 x 3/4
18	1668084	1	HANDLE ASSY.
19	1666256	1	ROD, Shift-Upper
20	1666255	1	ROD, Shift-Lower
21	918447	3	PIN, Cotter, 3/32 x 3/4
22	931317	2	BOLT, Carriage, 1/4-20 x 3/4
23	916168	2	PIN, Roll, 1/8 x 3/4
24	1668186	1	WORM, Chute
25	920562	1	BOLT, Carriage, 5/16-18 x 3/4
26	1667568	1	SUPPORT, Worm
27	917642	1	WASHER, Flat, 5/16
28	1668188	2	GEAR, Universal
29	923341	2	CAPSCREW, Hex Hd., 1/4-20 x 3/4
30	1667815	1	HANDLE, Clutch, L.H.
31	1668528	1	SUPPORT, Universal Gear
32	1668187	1	ROD, Chute Worm
33	1668189	1	ROD, Chute Control
34	1668190	1	KNOB, Spinner
35	1663430	1	PALNUT
36	1674567	1	PIVOT ROD ASSY.
37	1668185	6	BUSHING, Plastic
38	924361	1	WASHER
39	1668050	1	BRACKET, Shift Contro
40	1668525	1	ROD, Clutch-Lower, Auger
41	1668526	1	ROD, Clutch-Lower, Traction
42	1668527	1	SPRING
43	916621	2	NUT, Hex, #10-24, R.H.
44	108775	2	TURNBUCKLE
45	928704	2	NUT, Hex, #10-24, L.H.
46	1671041	2	GRIP, Handle bar
47	1668060	2	CLUTCH LEVER ASSY.
48	1668121	2	ROD, Clutch-Upper
49	928732	2	SCREW, Taptite, #10-24 x 1
50	1668083	1	HANDLE, Clutch, R.H.
51	1668608	2	GRIP, Clutch
52	918452	2	PIN, Cotter, 1/8 x 1
53	1669323	1	SPRING



Ref. No.	Part No.	Qty.	Description
1	921958	1	CAPSCREW, Hex Hd., 1/4-20 x 1/2
2	916964	2	LOCKWASHER, 1/4
3	917377	2	WASHER, Flat, 1/4
4	1666292	2	BEARING
5	917372	11	NUT, Hex, 5/16-18
6	917356	11	LOCKWASHER, 5/16
7	1667341	2	RETAINER, Bearing
8	925205	4	CAPSCREW, Hex Hd., 5/16-18 x 5/8
9	1667331	1	SPROCKET, 10 Tooth
10	1667501	1	SPACER
11	1667340	1	SHAFT, Hex
12	930545	1	SETSCREW, Socket Hd., 1/4-20 x 5/16
13	1667335	1	SET COLLAR
14	1668046	1	WASHER, Thrust
15	1666207	1	PIN, Slide
16	1667336	1	COLLAR, Thrust
17	1665995	1	HUB, Friction Disc
18	1665975	1	DISC, Friction
19	921332	3	CAPSCREW, Hex Hd., 5/16-18 x 3/4
20	157207	1	SPRING
21	1666855	1	BUSHING (Qty. 2 used with early style pivot arm)
22	1668255	1	SPRING
23	928721	1	SETSCREW, Sq. Hd., 5/16-18 x 1/2
24	**1672595	1	PULLEY, Traction
	*1666361	1	PULLEY, Traction
25	1670849	1	ARM ASSY., Pivot w/Bushings (Incl. all bushings, Qty 1 of Ref. No. 21, Qty 2 of Ref. No. 26; Qty. 1 of Ref. No. 58)
26	1666425	2	BUSHING
27	925003	3	SCREW, Taptite, 1/4-20 x 1/2 (Used w/1667276 see Ref. No. 29)
28	916950	1	NUT, Hex, 3/8-16

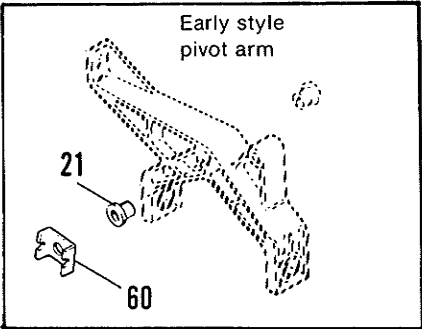
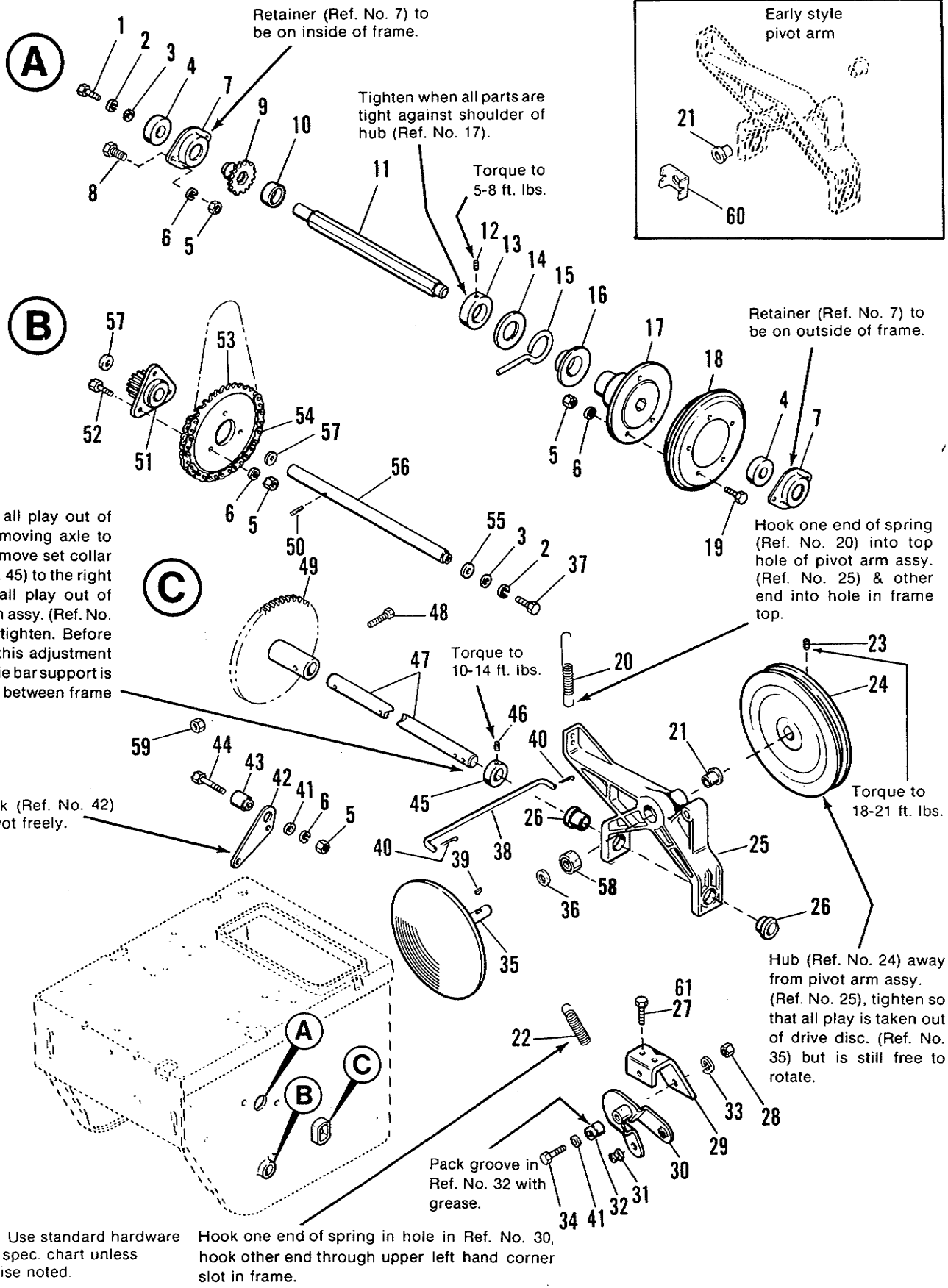
Ref. No. 29 through 61 listed on following 2 pages.

**\*EARLY MODELS (Used on)**

Mfg. No. 1690543 before s/n 2287  
Mfg. No. 1690544 before s/n 1197  
Mfg. No. 1690545 before s/n 2261  
Mfg. No. 1690546 before s/n 1131  
Mfg. No. 1690678 before s/n 1664  
Mfg. No. 1690679 before s/n 1634  
Mfg. No. 1690775 before s/n 1908  
Mfg. No. 1690776 before s/n 1339  
Mfg. No. 1690777 before s/n 1370  
Mfg. No. 1690778 before s/n 1643  
Mfg. No. 1690779 before s/n 1370

**\*\*LATER MODELS (Used on)**

Mfg. No. 1690543 after s/n 2286  
Mfg. No. 1690544 after s/n 1196  
Mfg. No. 1690545 after s/n 2260  
Mfg. No. 1690546 after s/n 1130  
Mfg. No. 1690678 after s/n 1663  
Mfg. No. 1690679 after s/n 1633  
Mfg. No. 1690775 after s/n 1907  
Mfg. No. 1690776 after s/n 1338  
Mfg. No. 1690777 after s/n 1369  
Mfg. No. 1690778 after s/n 1642  
Mfg. No. 1690779 after s/n 1369  
All Mfg. No. 1690903, 1691023 & 1691024



Ref. No.	Part No.	Qty.	Description
29	***1667276	1	BRACKET, Bushing
	****1673994	1	BRACKET, Bushing
30	1669256	1	ARM ASSY., Shift w/Bushings (Includes Ref. No. 31)
31	1669255	1	BUSHING, Ball
32	1666114	1	BUSHING, Spacer
33	916965	1	LOCKWASHER, 3/8
34	923701	1	CAPSCREW, Hex Hd., 3/8-16 x 2
35	1666230	1	DISC, Drive
36	1666379	1	WASHER
37	921959	1	CAPSCREW, Hex Hd., 1/4-20 x 5/8
38	1666105	1	ROD, Pivot
39	918312	1	KEY, Woodruff, 3/16 x 5/8
40	918451	2	PIN, Cotter, 1/8 x 3/4
41	917642	2	WASHER, Flat, 5/16
42	1666107	1	BELLCRANK
43	1666106	1	BUSHING, Pivot
44	921978	1	CAPSCREW, Hex Hd., 5/16-18 x 2
45	8021010	1	SET COLLAR
46	928721	1	SETSCREW, Sq. Hd., 5/16-18 x 1/2
47	1666978	1	AXLE
48	930570	1	CAPSCREW, Hex Hd., 5/16-18 x 1-1/2
49	1668145	1	GEAR ASSY.
50	923302	1	PIN, Roll, 1/8 x 1
51	1667326	1	GEAR ASSY.
52	921333	3	CAPSCREW, Hex Hd., 5/16-18 x 1
53	1667330	1	SPROCKET, 36 Tooth
54	1666980	1	CHAIN, Drive
55	924361	1	WASHER
56	1667332	1	JACKSHAFT
57	919387	2	WASHER
58	1665521	1	BEARING
59	924433	1	NUT, Hex, Lock, 5/16-18
60	1669552	1	WASHER, Thrust
61	*****924856	3	SCREW, Taptite (used w/1673994)

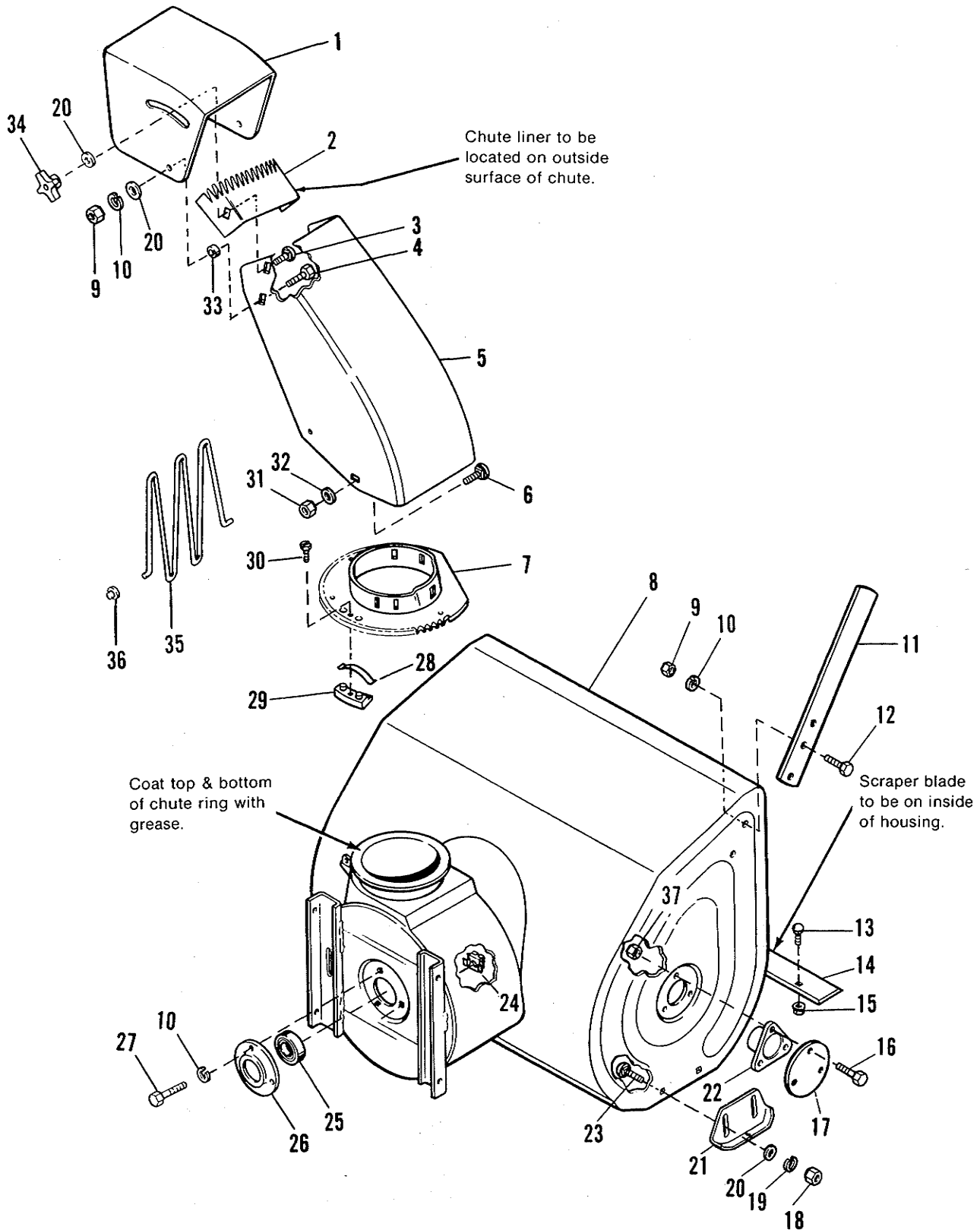
Ref. No. 1 through 28 listed on previous 2 pages.

**\*\*\*EARLY MODELS (Used on)**

Mfg. No. 1690543 before s/n 2287  
Mfg. No. 1690544 before s/n 1197  
Mfg. No. 1690545 before s/n 2261  
Mfg. No. 1690546 before s/n 1771  
Mfg. No. 1690678 before s/n 1664  
Mfg. No. 1690679 before s/n 1634  
Mfg. No. 1690775 before s/n 3951  
Mfg. No. 1690776 before s/n 2799  
Mfg. No. 1690777 before s/n 1658  
Mfg. No. 1690778 before s/n 1824  
Mfg. No. 1690779 before s/n 1420  
Mfg. No. 1690903 before s/n 3140

**\*\*\*\*LATER MODELS (Used on)**

Mfg. No. 1690543 after s/n 2286  
Mfg. No. 1690544 after s/n 1196  
Mfg. No. 1690545 after s/n 2260  
Mfg. No. 1690546 after s/n 1770  
Mfg. No. 1690678 after s/n 1663  
Mfg. No. 1690679 after s/n 1633  
Mfg. No. 1690775 after s/n 3950  
Mfg. No. 1690776 after s/n 2798  
Mfg. No. 1690777 after s/n 1657  
Mfg. No. 1690778 after s/n 1823  
Mfg. No. 1690779 after s/n 1419  
Mfg. No. 1690903 after s/n 3139  
All Mfg. No. 1690903 & 1691024

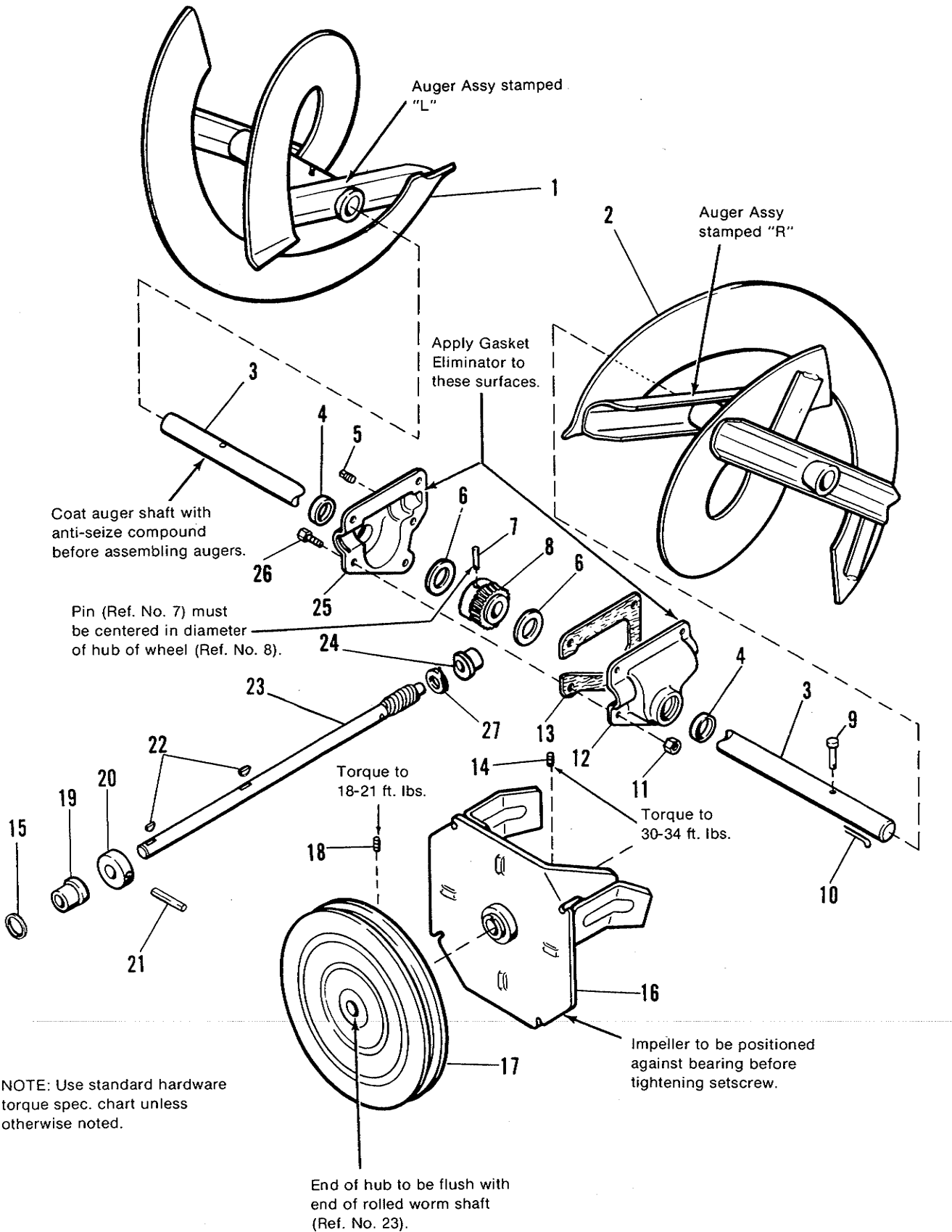


NOTE: Use standard hardware torque spec. chart unless otherwise noted.



Ref. No.	Part No.	Qty.	Description
1	1667791	1	DEFLECTOR ASSY.
2	1667828	1	LINER, Chute
3	923055	1	BOLT, Carriage, 5/16-18 x 7/8
4	936482	2	SCREW, Truss Phil Hd., 5/16-18 x 3/4
5	1671011	1	CHUTE
6	923333	3	BOLT, Carriage, 1/4-20 x 5/8
7	1667908	1	GEAR, Chute
*8	1667509	1	HOUSING ASSY., Auger, 60 cm (24") (Used on Mfg. No. 1690543, 1690544, 1690775, 1690903, 1691023)
	1667510	1	HOUSING ASSY., Auger, 70 cm (28") (Used on Mfg. No. 1690545, 1690678, 1690776, 1690778)
	1667511	1	HOUSING ASSY., Auger, 80 cm (32") (Used on Mfg. No. 1690546, 1690679, 1690777, 1690779)
9	917372	4	NUT, 5/16-18 (Qty. 6, 8 & 10 HP only)
10	917356	7	LOCKWASHER, 5/16 (Qty. 9, 8 & 10 HP only)
11	1668171	2	CUTTER, Drift (8 & 10 HP only)
12	921332	4	CAPSCREW, Hex Hd., 5/16-18 x 3/4 (8 & 10 HP only)
13	920561	5	BOLT, Carriage, 5/16-18 x 5/8 (Qty. 7, 10 HP only)
14	1667986	1	BLADE, Scraper, 60 cm (24")
	1667987	1	BLADE, Scraper, 70 cm (28")
	1697988	1	BLADE, Scraper, 80 cm (32")
15	935048	5	LOCKNUT, Flange, 5/16-18 (Qty. 7, 10 HP only)
16	923325	6	CAPSCREW, Hex Hd., 5/16-18 x 7/8
17	1668639	2	CAP, Bearing
18	916950	4	NUT, Hex, 3/8-16
19	916965	4	LOCKWASHER, 3/8
20	917642	7	WASHER, Flat, 5/16
21	177434	2	SKID
22	1665980	2	BEARING, Auger
23	922110	4	BOLT, Carriage, 3/8-16 x 3/4
24	930659	3	NUT, Retainer, 5/16-18
25	108202	1	BEARING, Ball
26	1665982	1	RETAINER, Bearing
27	925205	3	CAPSCREW, Hex Hd., 5/16-18 x 5/8
28	1667865	3	SPRING
29	1666613	3	HOLD DOWN, Chute
30	1664961	3	SCREW, Plastite #10
31	920397	3	LOCKNUT, Nylon, 1/4-20
32	917377	3	WASHER, Flat, 1/4
33	1667790	2	SPACER
34	1670578	1	KNOB, 4 Arm w/5/16-18 Thd. Insert
35	1670809	1	GUARD, Chute (Used on Mfg. No. 1690775, 1690776, 1690777, 1690778, 1690779, 1690903, 1691023)
36	1663812	2	PUSH NUT (Used on Mfg. No. 1690775, 1690776, 1690777, 1690778, 1690779, 1690903, 1691023)
37	923362	6	NUT, Hex, Center Lock, 5/16-18

\*Ref. No. 8 includes Ref. No. 13, 14 & 15.



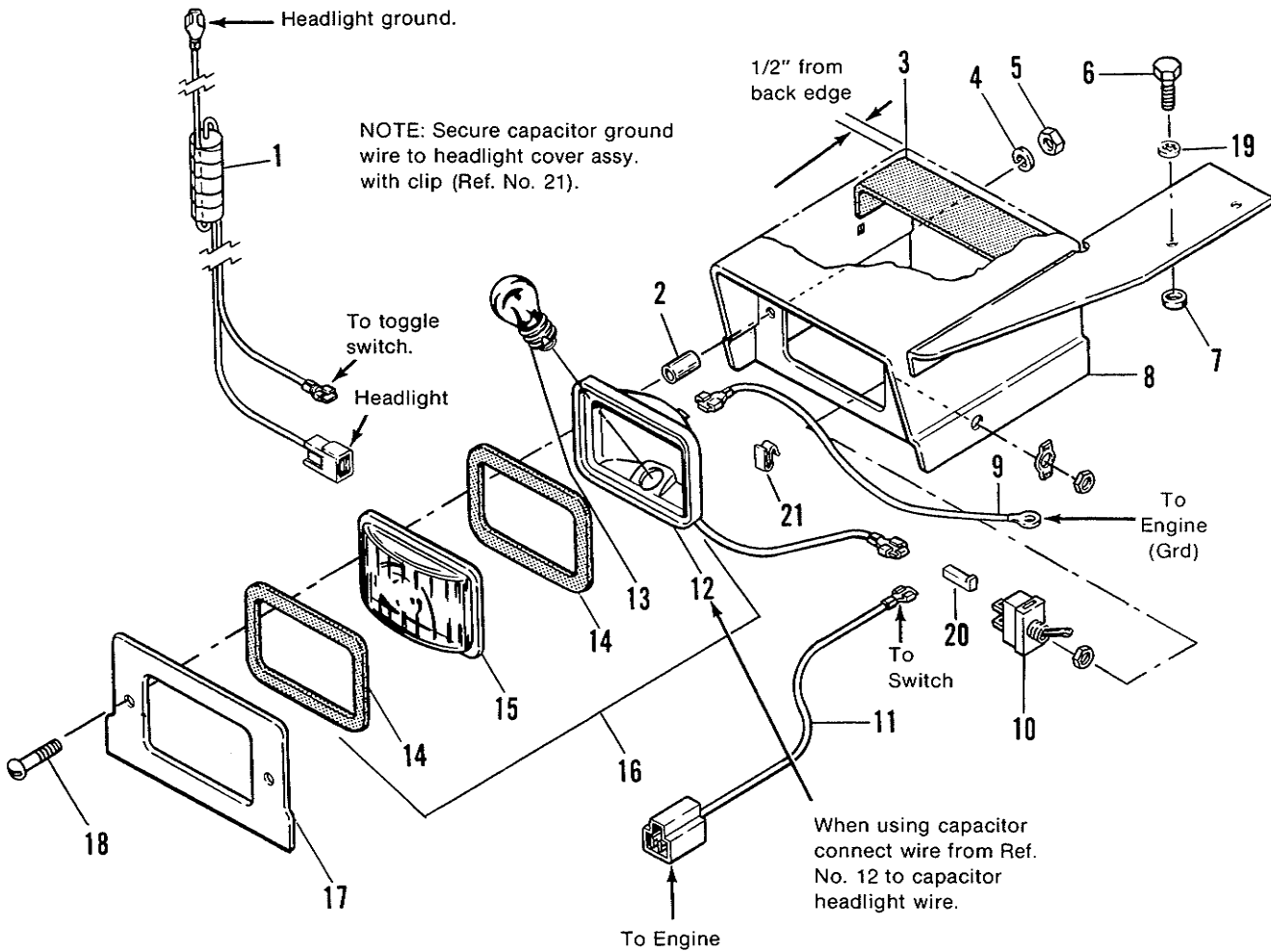
Ref. No.	Part No.	Qty.	Description
1	1666401	1	AUGER ASSY., L.H., 60 cm (24")
	1666660	1	AUGER ASSY., L.H., 70 cm (28")
	1666409	1	AUGER ASSY., L.H., 80 cm (32")
2	1666402	1	AUGER ASSY., R.H., 60 cm (24")
	1666659	1	AUGER ASSY., R.H., 70 cm (28")
	1666410	1	AUGER ASSY., R.H., 70 cm (32")
3	1667983	1	SHAFT, Auger
4	118118	2	SEAL
5	1668971	1	PLUG, Pipe, 1/8
6	1666423	2	WASHER, Thrust
7	936100	1	PIN, Drivelok, 5/16 x 1-1/2
8	1666509	1	WHEEL, Worm
9	1668344	2	PIN, Shear
10	918447	2	PIN, Cotter, 3/32 x 3/4
11	923358	5	LOCKNUT, Hex, 1/4-20
12	1666418	1	CASE, Gear, R.H.
13	1669504	1	GASKET
14	923084	1	SETSCREW, Sq. Hd., 3/8-16 x 1/2
15	1669372	1	SEAL
16	1668113	1	IMPELLER ASSY.
17	1666281	1	PULLEY, Auger Input
18	928721	1	SETSCREW, Sq. Hd., 5/16-18 x 1/2
19	1666425	1	BUSHING, Flange
20	1668105	1	COLLAR, Thrust
21	936098	1	PIN, Drivlok, 3/16 x 1-1/2
22	918312	2	KEY, Woodruff, 3/16 x 5/8
23	1666426	1	SHAFT, Roller Worm
24	1666424	1	BUSHING, Flange
25	1666419	1	CASE, Gear, L.H.
26	924009	5	CAPSCREW, Hex Hd., 1/4-20 x 7/8
27	1670971	1	WASHER, Thrust

**NOTE: Use only *Simplicity* Special Worm Gear Oil  
in worm Gear Housing.**

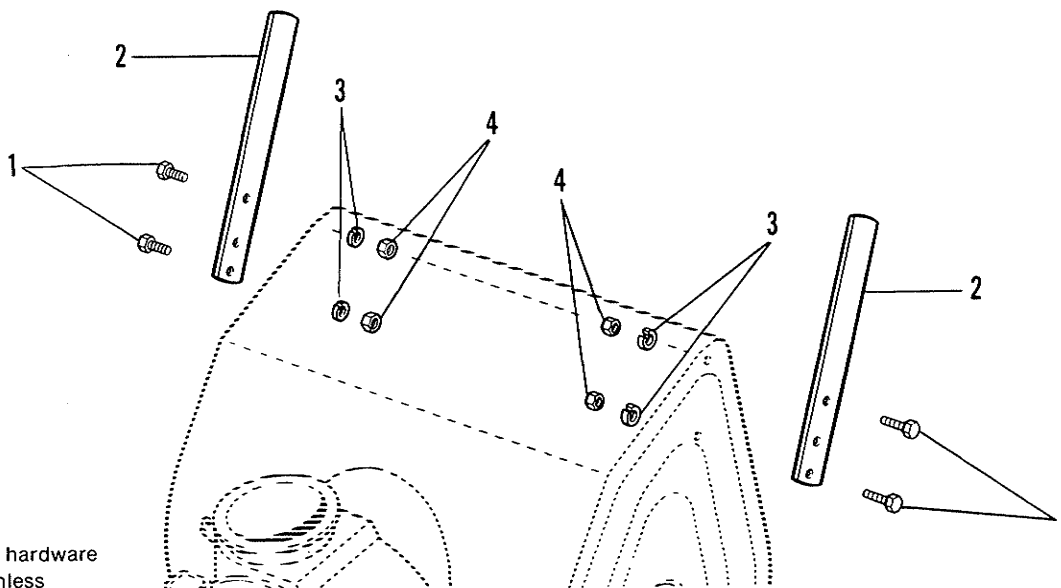
**1 Quart Part #118065**

**12 Qt. Case, Part #1685100**

**8 Oz. Tube, Part #103154**



## Drift Cutter Kit



NOTE: Use standard hardware torque spec. chart unless otherwise noted.

Ref. No.	Part No.	Qty.	Description
1	*1668867	1	WIRE, Capacitor
2	1664792	2	SPACER
3	1668830	1	PAD, Rubber
4	916964	2	LOCKWASHER, 1/4
5	916622	2	NUT, Hex, 1/4-20
6	921333	2	CAPSCREW, Hex Hd., 5/16-18 x 1
7	919381	4	WASHER, Plain, 5/16 x 1 O.D.
8	1668738	1	COVER ASSY., Headlight
9	**1668762	1	WIRE, Light to Ground
10	1668760	1	SWITCH, Toggle (Incl. washer & nuts)
11	*1668763	1	WIRE, Engine to Switch
	**1668761	1	WIRE, Engine to Switch
12	1668748	1	SOCKET, Reflector
13		1	BULB, #1156 (obtain locally)
14	1654662	2	GASKET
15	1668721	1	LENS, Amber
16	1668747	1	LIGHT ASSY. (Incl. Ref. Nos. 12 thru 15)
17	1668728	1	SUPPORT, Light
18	917451	2	SCREW, Rd. Hd., 1/4-20 x 1
19	923300	2	LOCKWASHER, Internal Tooth, 5/16
20	*172099	1	CONNECTOR, Body
21	122159	1	CLIP, Wire

\*Used on Mfg. No. 1690678, 1690679, 1690778 & 1690779 only.

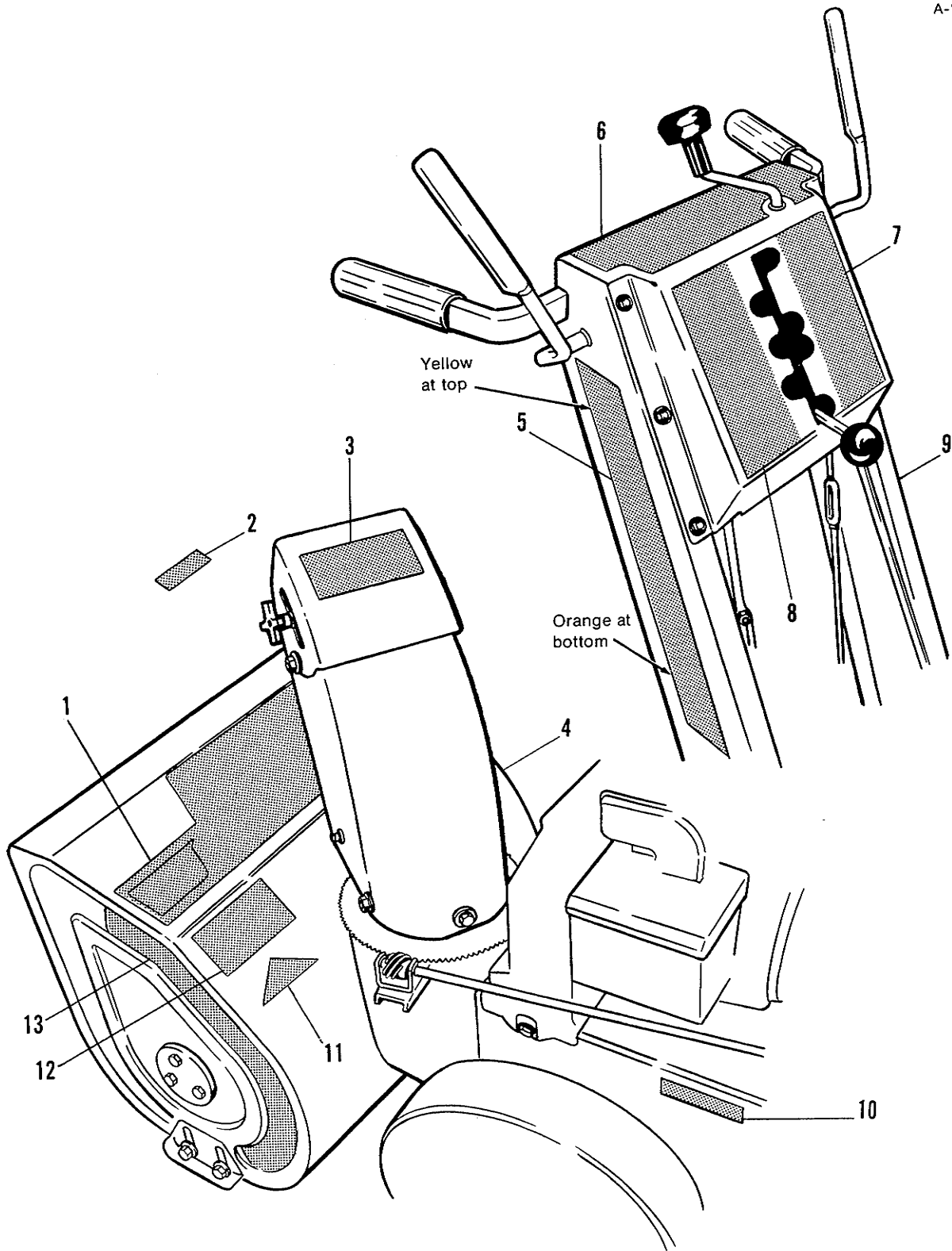
\*\*Used on Mfg. No. 1690545, 1690546, 1690776 & 1690777 only

i. No. 1685189

ft Cutter Kit (Standard on 8 & 10 HP Models)

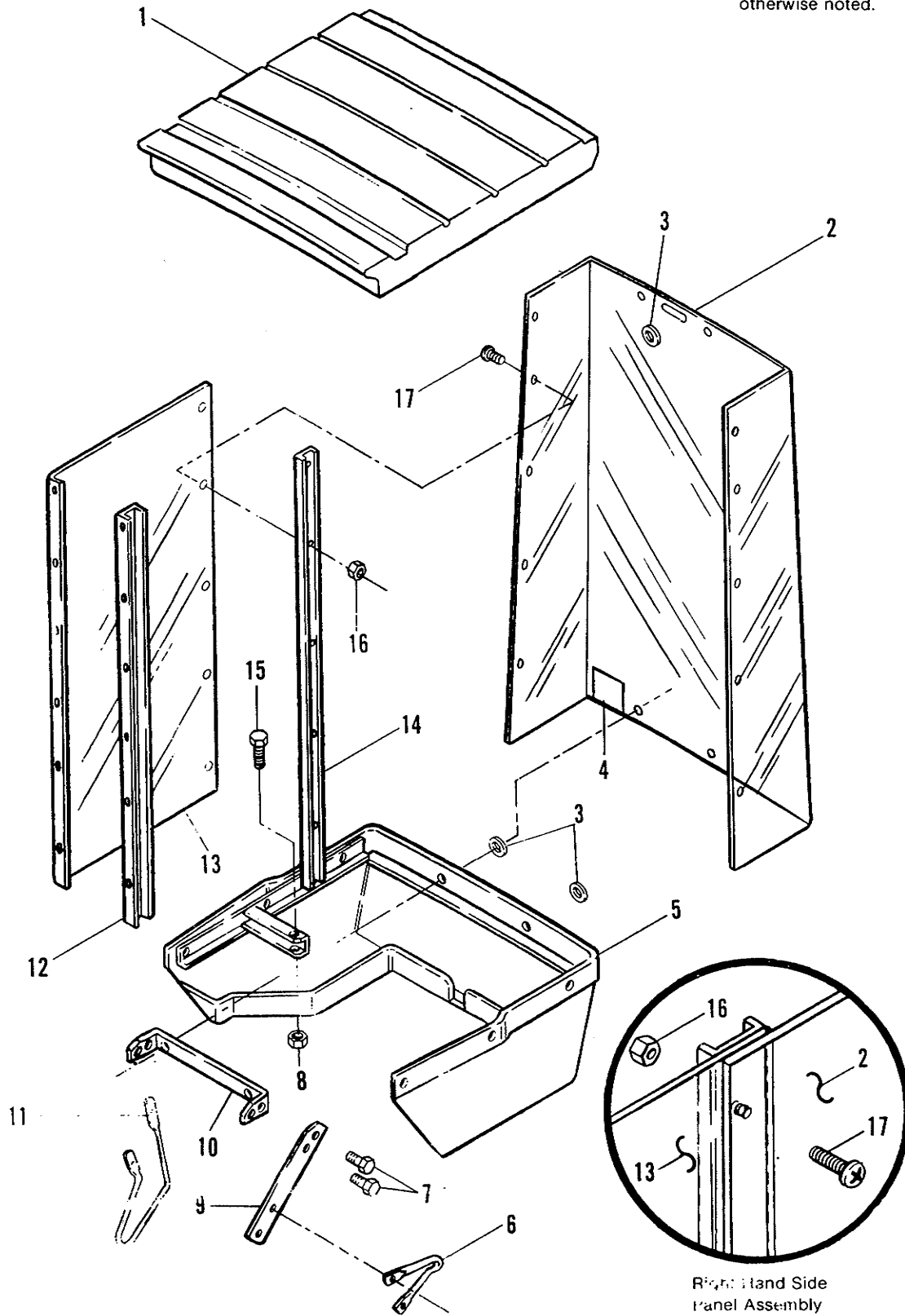
Ref. No.	Part No.	Qty.	Description
1	921332	4	CAPSCREW, Hex Hd., 5/16-18 x 3/4
2	1668171	2	CUTTER, Drift
3	917356	4	LOCKWASHER, 5/16
4	917372	4	NUT, Hex, 5/16-18

A-205



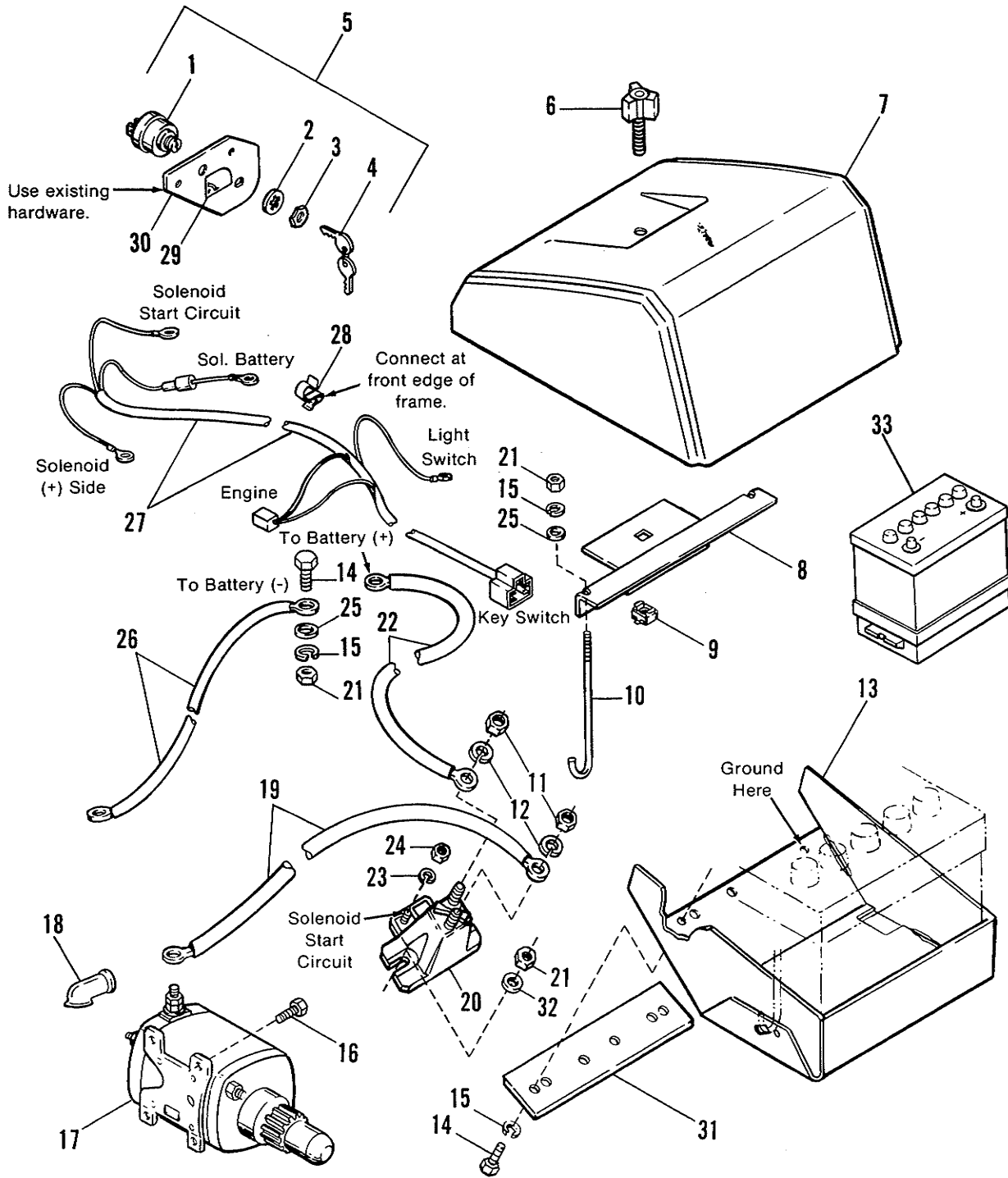
Ref. No.	Part No.	Qty.	Description
1	1668938	1	DECAL, Housing, 560
	1668939	1	DECAL, Housing, 760
	1676496	1	DECAL, Housing, 860
	1668940	1	DECAL, Housing, 870
	1668941	1	DECAL, Housing, 1080
2	1668991	1	DECAL, 12V/120V (1690678, 1690679, 1690778, 1690779, 1691023 & 1691024)
3	1676936	1	DECAL, Warning, Chute
4	1668936	1	DECAL, Hsg., End, R.H.
5	1668934	1	DECAL, Handle, R.H.
6	1676939	1	DECAL, Dash
7	1669557	1	DECAL, Shift Pattern, L.H.
8	1669556	1	DECAL, Shift Pattern, R.H.
9	1668935	1	DECAL, DECAL, Handle, L.H.
10		1	I.D. Tag (Not Serviced)
11		1	DECAL, OPEI (Not Serviced)
12	1676935	1	DECAL, Warning
13	1668937	1	DECAL, Housing, End L.H.

NOTE: Use standard hardware torque spec. chart unless otherwise noted.





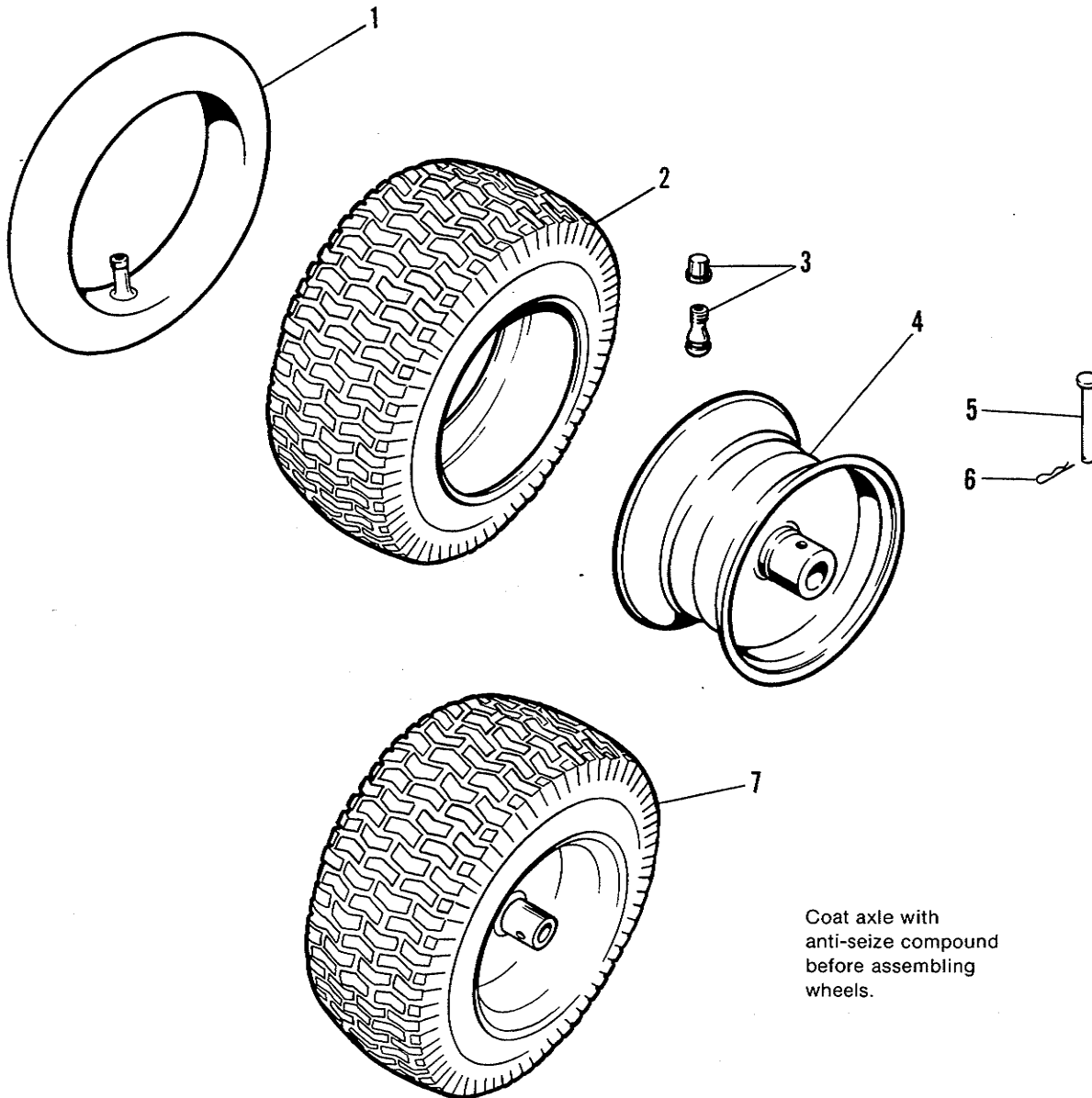
Ref. No.	Part No.	Qty.	Description
1	1668887	1	COVER, Top
2	1668886	1	PANEL, Front
3	917377	3	WASHER, Flat, 1/4
4	1669127	1	DECAL, Cleaning Instructions
5	1668869	1	SHROUD, Lower
6	1669090	1	GUIDE, Rope
7	923341	4	CAPSCREW, Hex Hd., 1/4-20 x 3/4
8	924433	2	LOCKNUT, Nylon, 5/16-18
9	1668851	2	SUPPORT, Side
10	1668852	1	SUPPORT, Front
11	1669150	2	ROD, Skid
12	1669083	2	CHANNEL, Side
13	1668884	2	PANEL, Side
14	1668863	1	SUPPORT ASSY., L.H.
	1668862	1	SUPPORT ASSY., R. H. (not shown)
15	922127	2	CAPSCREW, Hex Hd., 5/16-18 x 1-3/4
16	920397	37	LOCKNUT, Nylon, 1/4-20
17	935945	33	SCREW, Phil. Truss Hd., 1/4-20 x 3/4



Ref. No.	Part No.	Qty.	Description
1		1	SWITCH (not serviced separately, order Ref. No. 5)
2	918906	1	LOCKWASHER, Int. Tooth, 5/8
3	122234	1	NUT, Special
4	122203	1	KEY, Set of Two
5	178280	1	SWITCH, Key (Incl. Ref. Nos. 1, 2, 3 & 4)
6	1668777	1	KNOB
7	1668756	1	COVER
8	1668795	1	HOLD DOWN ASSY., Battery
9	930659	1	NUT, Cage, Tinnerman, 5/16-18
10	1668820	2	J-HOOK
11	917372	2	NUT, Hex, Full, 5/16-18
12	917356	2	LOCKWASHER, 5/16
13	1668731	1	SUPPORT ASSY., Battery
14	923341	6	CAPSCREW, Hex, 1/4-20 x 3/4
15	916964	8	LOCKWASHER, 1/4
*16		4	SCREW (not serviced)
*17		1	MOTOR, Starter (not serviced)
18	122023	1	COVER, Terminal
19	1668819	1	WIRE, Solenoid to Starter
20	1671994	1	SOLENOID
21	916622	8	NUT, Hex, Full, 1/4-20
22	1603195	1	WIRE, Battery to Solenoid
23	917365	1	LOCKWASHER, #10
24	917415	1	NUT, Hex, Full, #10-32
25	917377	4	WASHER, Flat, 1/4
26	1655522	1	CABLE, Battery to Ground
27	1668816	1	HARNESS, Wiring
28	172434	1	CLIP, Wire
29	1668905	1	DECAL, Key Switch
30	1668743	1	BRACKET, Key Switch
31	1671022	1	PLATE, Reinforcement
32	921319	2	WASHER, 1/4
33	1685215	1	BATTERY (Not included in kit)

\*For service of this part, contact your Tecumseh distributor.

A-208



Coat axle with anti-seize compound before assembling wheels.

---

Ref. No.	Part No.	Qty.	Description
1	153038		TUBE (Service Only) 4.80/4.00-8
2	1668163	2	TIRE, (4.80/4.00-8)
3	172353	2	VALVE STEM & CAP
4	1667064	2	WHEEL & HUB ASSY.
5	1665994	2	PIN
6	106787	2	CLIP, Hair Pin
7	1668164	2	WHEEL & TIRE ASSY.

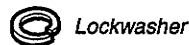
# Hardware Identification & Torque Specifications

## Common Hardware Types

Hex Head Capscrew



Washer



Lockwasher

Carriage Bolt



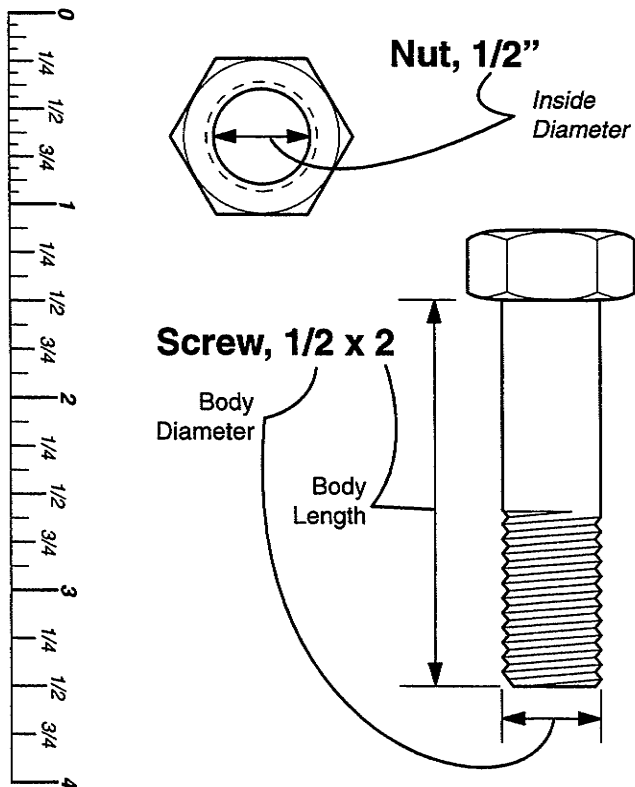
Hex Nut

## Standard Hardware Sizing

When a washer or nut is identified as  $1/2$ " , this is the *Nominal size*, meaning the *inside diameter* is  $1/2$  inch; if a second number is present it represents the *threads per inch*

When bolt or capscrew is identified as  $1/2 - 16 \times 2$ " , this means the *Nominal size*, or *body diameter* is  $1/2$  inch; the second number represents the *threads per inch* (16 in this example, and the final number is the *body length* of the bolt or screw (in this example 2 inches long).

**The guides and ruler furnished below are designed to help you select the appropriate hardware and tools.**



Torque Specification Chart						
FOR STANDARD MACHINE HARDWARE (Tolerance $\pm 20\%$ )						
Hardware Grade	No Marks SAE Grade 2		SAE Grade 5		SAE Grade 8	
	in/lbs ft/lbs	Nm.	in/lbs ft/lbs	Nm.	in/lbs ft/lbs	Nm.
8-32	19	2.1	30	3.4	41	4.6
8-36	20	2.3	31	3.5	43	4.9
10-24	27	3.1	43	4.9	60	6.8
10-32	31	3.5	49	5.5	68	7.7
1/4-20	66	7.6	8	10.9	12	16.3
1/4-28	76	8.6	10	13.6	14	19.0
5/16-18	11	15.0	17	23.1	25	34.0
5/16-24	12	16.3	19	25.8	27	34.0
3/8-16	20	27.2	30	40.8	45	61.2
3/8-24	23	31.3	35	47.6	50	68.0
7/16-14	30	40.8	50	68.0	70	95.2
7/16-20	35	47.6	55	74.8	80	108.8
1/2-13	50	68.0	75	102.0	110	149.6
1/2-20	55	74.8	90	122.4	120	163.2
9/16-12	65	88.4	110	149.6	150	204.0
9/16-18	75	102.0	120	163.2	170	231.2
5/8-11	90	122.4	150	204.0	220	299.2
5/8-18	100	136	180	244.8	240	326.4
3/4-10	160	217.6	260	353.6	386	525.0
3/4-16	180	244.8	300	408.0	420	571.2
7/8-9	140	190.4	400	544.0	600	816.0
7/8-14	155	210.8	440	598.4	660	897.6
1-8	220	299.2	580	788.8	900	1,244.0
1-12	240	326.4	640	870.4	1,000	1,360.0

### NOTES

- These torque values are to be used for all hardware excluding: locknuts, self-tapping screws, thread forming screws, sheet metal screws and socket head setscrews.
- Recommended seating torque values for locknuts:
  - for prevailing torque locknuts - use 65% of grade 5 torques.
  - for flange whizlock nuts and screws - use 135% of grade 5 torques.
- Unless otherwise noted on assembly drawings, all torque values must meet this specification.

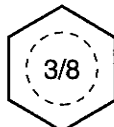
## Wrench & Fastener Size Guide



$1/4$ " Bolt or Nut  
Wrench— $7/16$ "



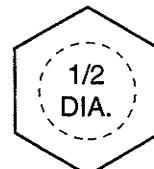
$5/16$ " Bolt or Nut  
Wrench— $1/2$ "



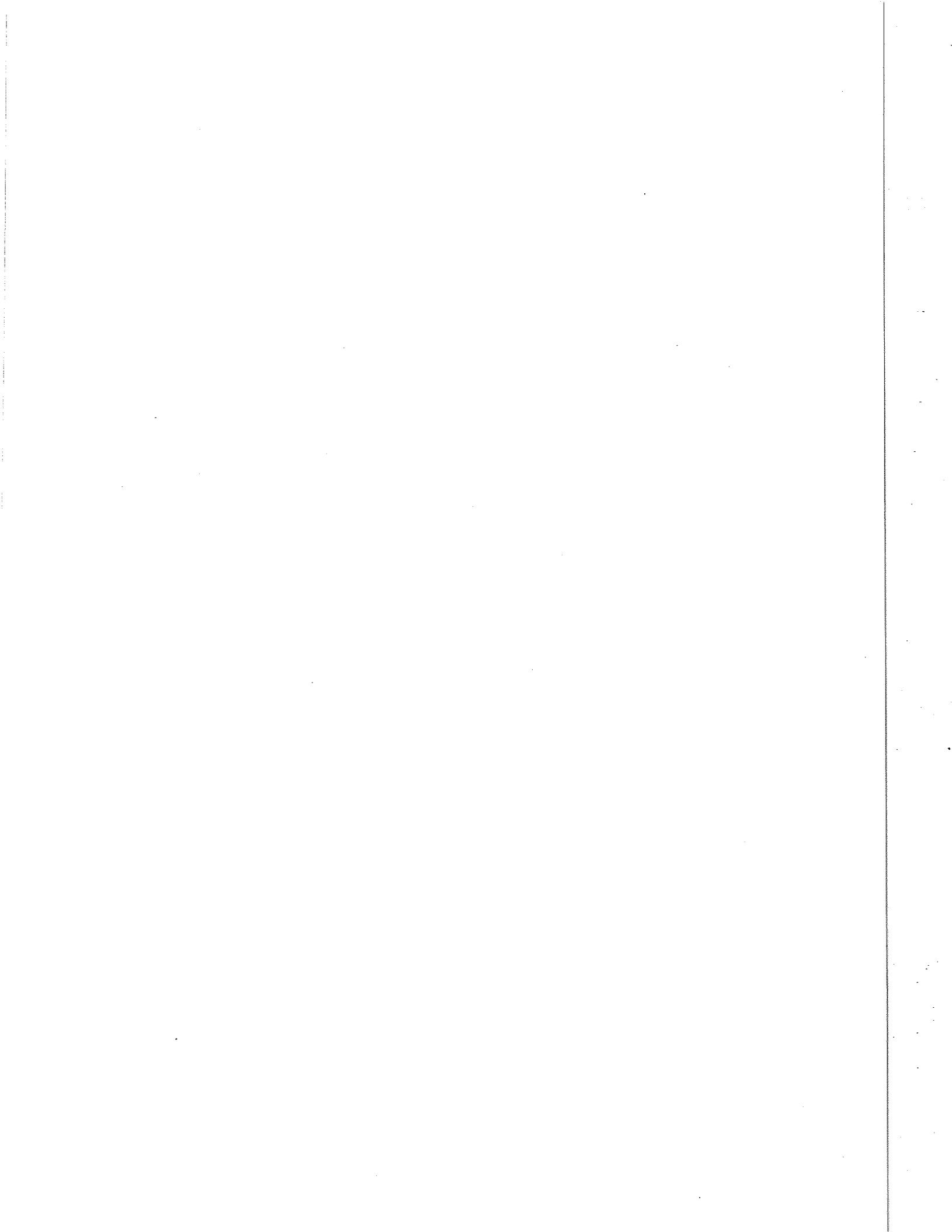
$3/8$ " Bolt or Nut  
Wrench— $9/16$ "



$7/16$ " Bolt or Nut  
Wrench (Bolt)— $5/8$ "  
Wrench (Nut)— $11/16$ "



$1/2$ " Bolt or Nut  
Wrench— $3/4$ "



***Simplicity***

MANUFACTURING, INC.

---

500 N Spring Street / PO Box 997  
Port Washington, WI 53074-0997 USA

© Copyright 1998 Simplicity Manufacturing, Inc.  
All Rights Reserved. Printed In USA.

