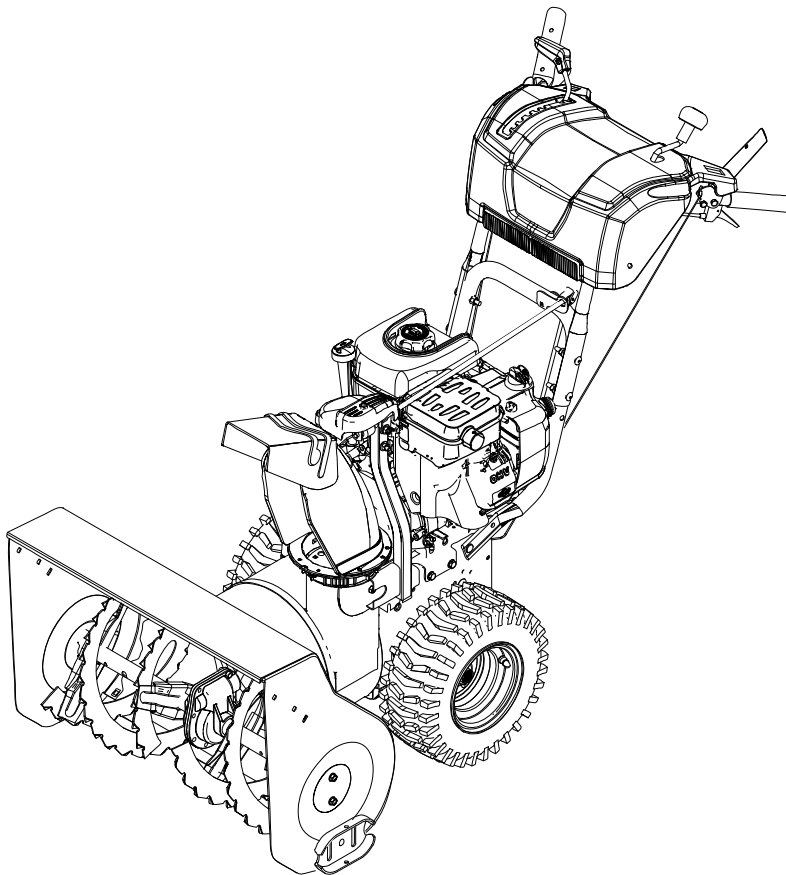


Parts Manual for
SNAPPER®

**24" 9TP TWO STAGE
INTERMEDIATE SNOWTHROWER
2011**

<i>Model No.</i>	<i>Description</i>
1696000	M924E



Briggs & Stratton Yard Power Products Group
535 Macon Road
McDonough, GA, 30253 U.S.A.
800-935-2967

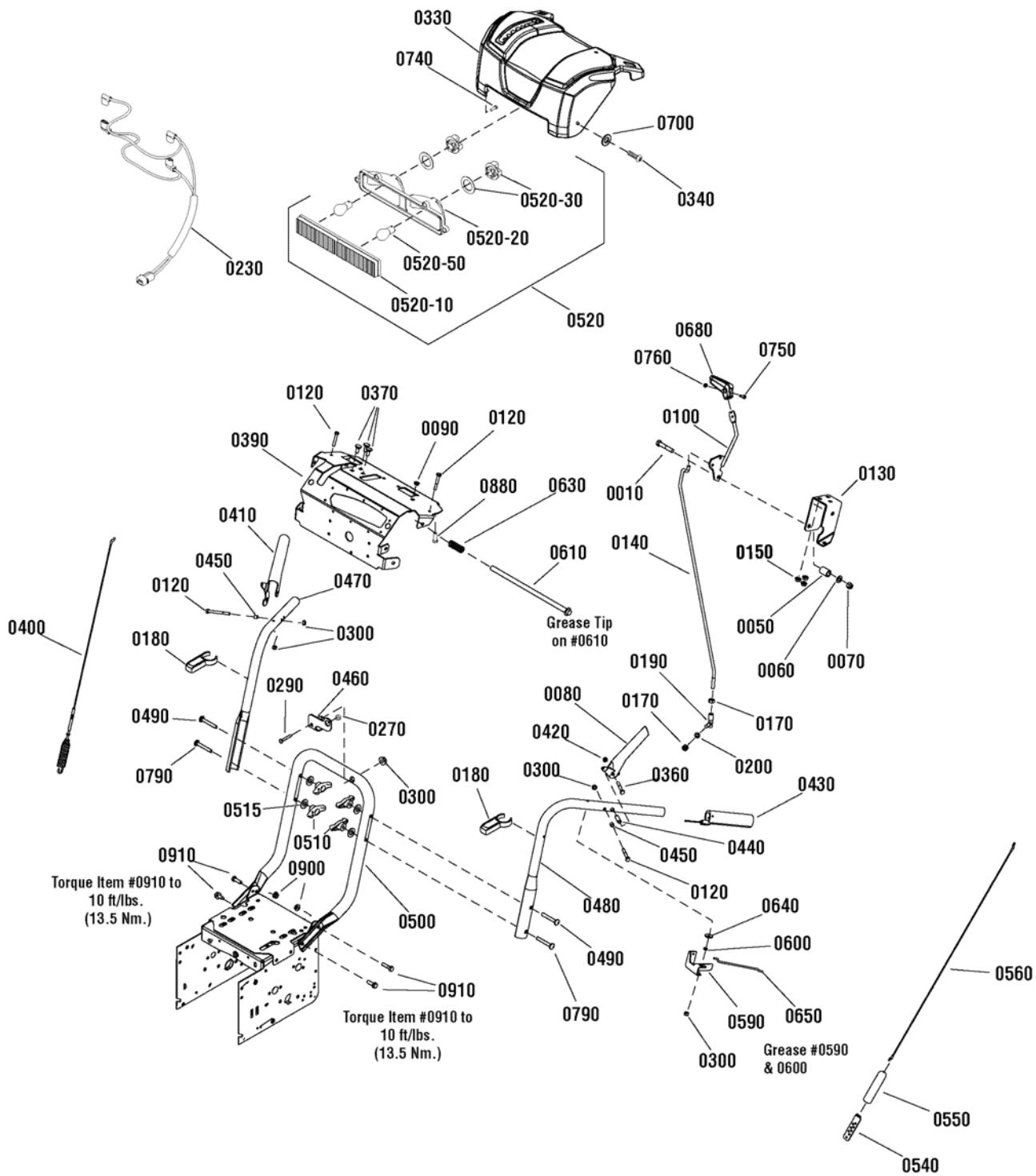
Manual No.	7105282
Revision: -	6/14/2011

Not for
Reproduction

PAGE	GROUP
4	Handles & Controls Group
8	Auger Housing Group
10	Auger Drive Group
12	Gear Case Assembly
14	Chute & Rotation Group - Dash Mount Crank
16	Engine & Frame Group
20	Traction Drive Group - Standard
22	Decals Group
24	Wheel & Tire Group

Not for
Reproduction

Handles & Controls Group

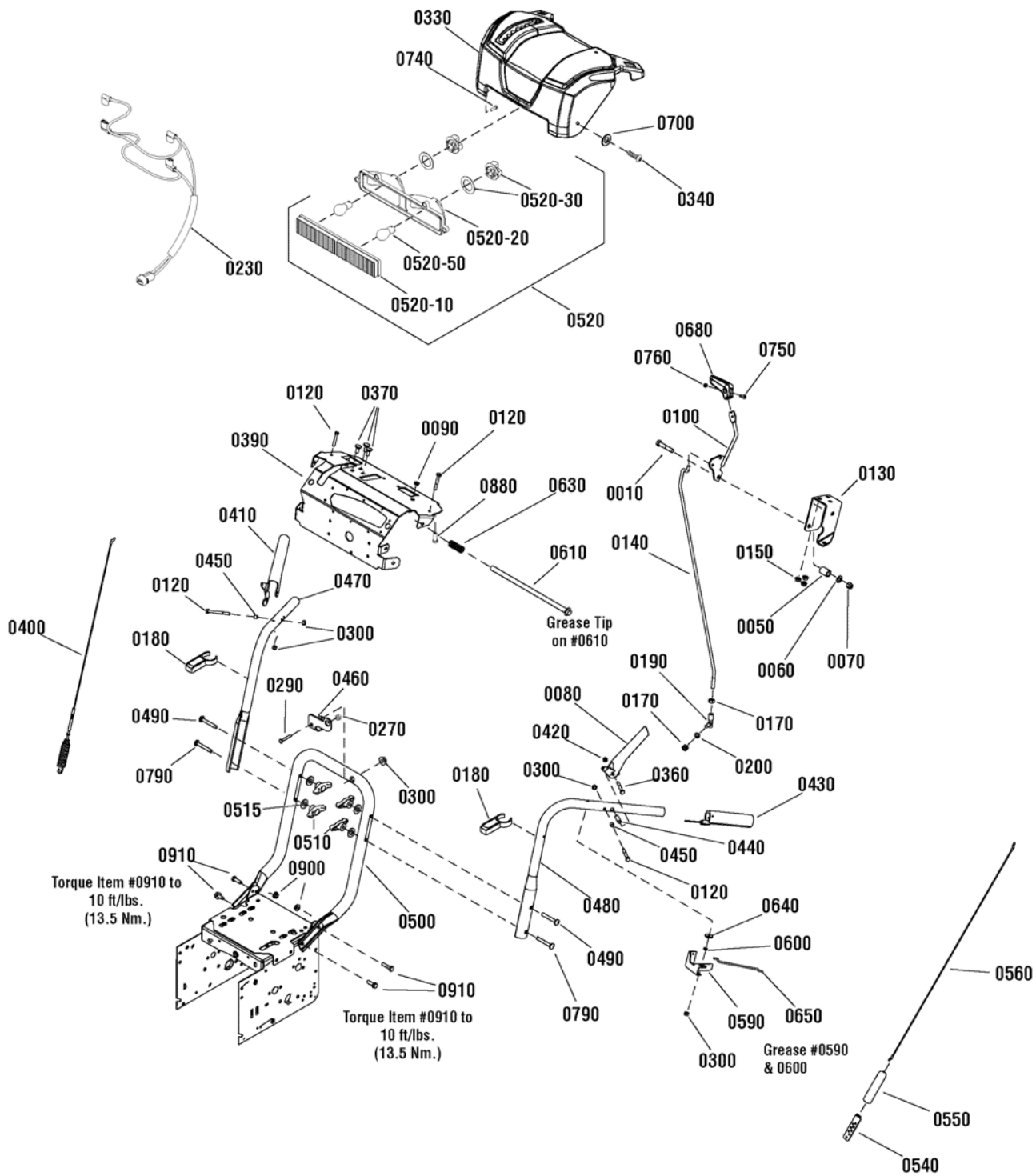


Item	Part No	Qty	Description
0010	1923701	1	CAPSCREW, Hex Head, 3/8-16 x 2, G5
0050	724361	1	SPRING, 3/4
0060	1918266	1	WASHER, 3/8
0070	1919439	1	NUT, Hex Lock, ESNA Light, 3/8-16
0080	1739782A	1	LEVER, Clutch, LH
0090	1667588	1	BUSHING
0100	1736836	1	LEVER, Speed
0120	1921962	4	CAPSCREW, Hex Head, 1/4-20 x 1-3/4, G5
0130	1737684	1	BRACKET, Controls
0140	1751543	1	ROD, Speed Control
0150	1931277	3	NUT, Hex Flange, Whiz Lock, 5/16-18
0170	2820263	1	NUT, Hex, 5/16-24
0180	1739487	2	BRACKET, Mounting
0190	724360	1	BALLJOINT
0200	1917356	1	LOCKWASHER, Spring, 5/16
0230	1738286	1	WIRING HARNESS, Headlights
0270	722323	1	BUSHING, Chute Crank
0290	1931323	1	BOLT, Carriage, Short Neck, 1/4-20 x 2, G5
0300	1920397	5	NUT, Hex Lock, ESNA Light, 1/4-20
0330	1738324	1	DASH
0340	1960001	2	SCREW, Hex Washer Head, Plastite, 10-14 x 5/8
0360	1750554	2	BOLT, Shoulder, 10-24
0370	723873	3	BOLT, Carriage, Short Neck, 5/16-18 x 3/4
0390	1739500BZ	1	SUPPORT, Dash
0400	1737544	1	CABLE, Auger Drive
0410	1739783A	1	LEVER, Clutch, RH
0420	1933896	2	NUT, Hex Lock, Nylon Insert, 10-24
0430	1726317	2	GRIP
0440	1736542	2	SPACER, Stepped
0450	1678392	2	SPACER, 1/4 ID x 3/8 OD x 5/16"
0460	1735589	1	BRACKET, Rod Support
0470	1734587A	1	HANDLE, Upper, RH
0480	1734586A	1	HANDLE, Upper, LH
0490	1750299	2	BOLT, Carriage, Curved Head, 5/16-18 x 2-1/4
0500	1737274A	1	HANDLE, Lower
0510	7035744	4	KNOB, Wing, 5/16-18
0515	7090391	4	WASHER, Internal Tooth, 5/16
0520	1736176	1	HEADLIGHT ASSEMBLY
0520-10	-----	1	LENS, Twin Light (Included in Ref. No 0520)
0520-20	-----	1	DEFLECTOR, Twin Light (Included in Ref. No 0520)
0520-30	1736180	2	SOCKET & GASKET ASSEMBLY, Headlight (Included in Ref. No 0520)
0520-50	-----	2	* BULB, 12V - 20W Halogen (Included in Ref. No 0520)
0540	723259	1	BRACKET, Cable Adjusting
0550	723154	1	BOOT, Spring End Cover

Footnotes:

Note* See your local hardware store for replacement bulbs.

Handles & Controls Group



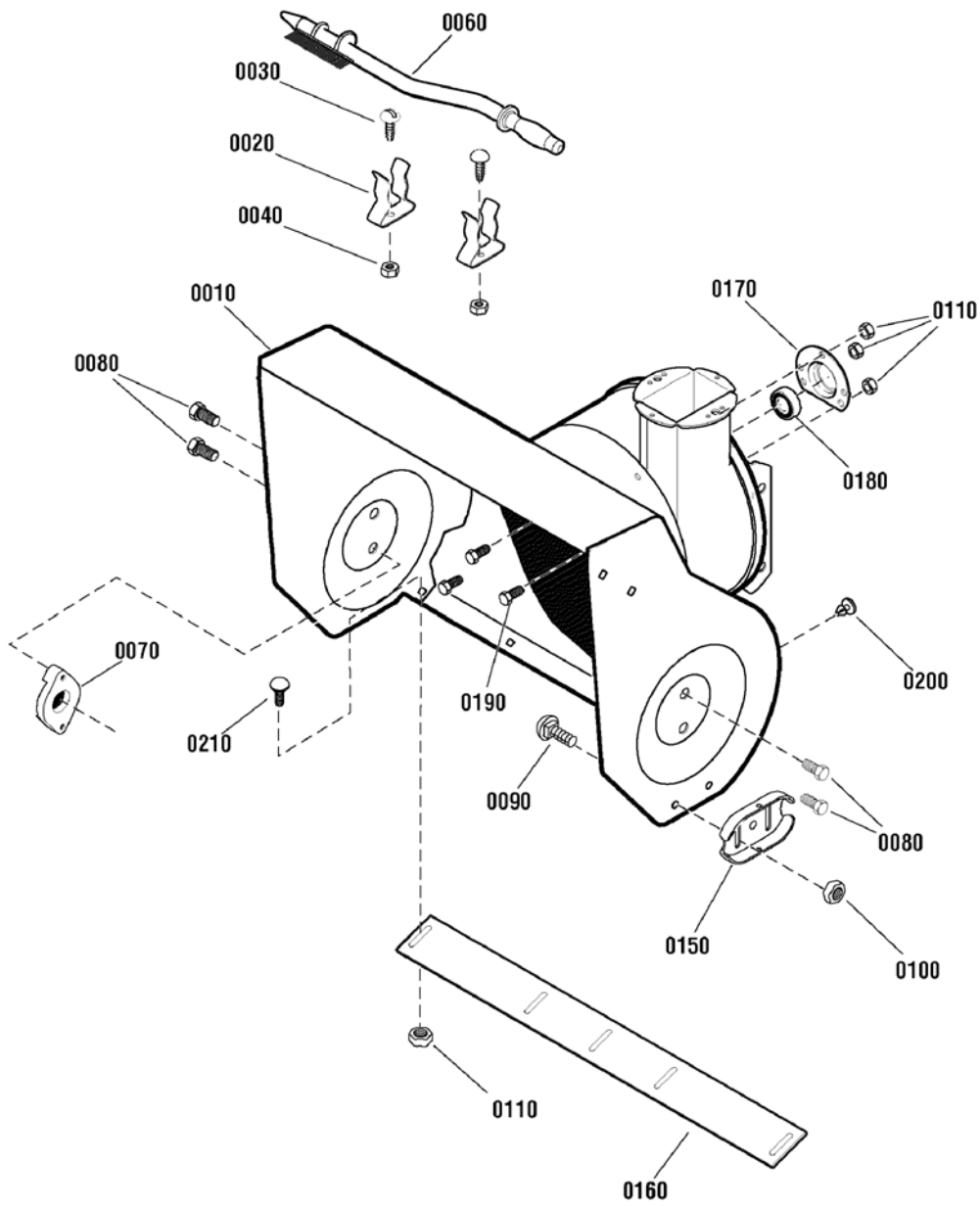
Item	Part No	Qty	Description
0560	727331	1	CABLE, Forward Drive
0590	1733505A	1	BRACKET, Pivot, Free Hand
0600	1733095	1	SPACER, 1/4 ID x 3/8 OD x 1/8"
0610	1733509	1	ROD & SPRING ASSEMBLY
0630	2108360	1	SPRING, Compression, 2-1/4"
0640	1960353	1	WASHER, 1/4
0650	1736360	1	ROD, Hold Down
0680	1733192	1	KNOB, Slot Speed
0700	1921319	2	WASHER, 1/4
0740	7091105	4	SCREW, Hex Washer Head, #10-16 x 1/2
0750	1960589	1	SCREW, Phillips Head, #10-24 x 3/4
0760	1933896	1	NUT, Hex Lock, Nylon Insert, 10-24
0790	7091189	2	BOLT, Carriage, Curved Head, 5/16-18 x 2
0880	7091081	2	SCREW, Hex Washer, Tap, 1/4-15 x 3/4
0900	1960684	4	NUT, Hex KEPS, 5/16-18
0910	723873	4	BOLT, Carriage, Short Neck, 5/16-18 x 3/4

Not for
Reproduction

Footnotes:

Note* See your local hardware store for replacement bulbs.

Auger Housing Group

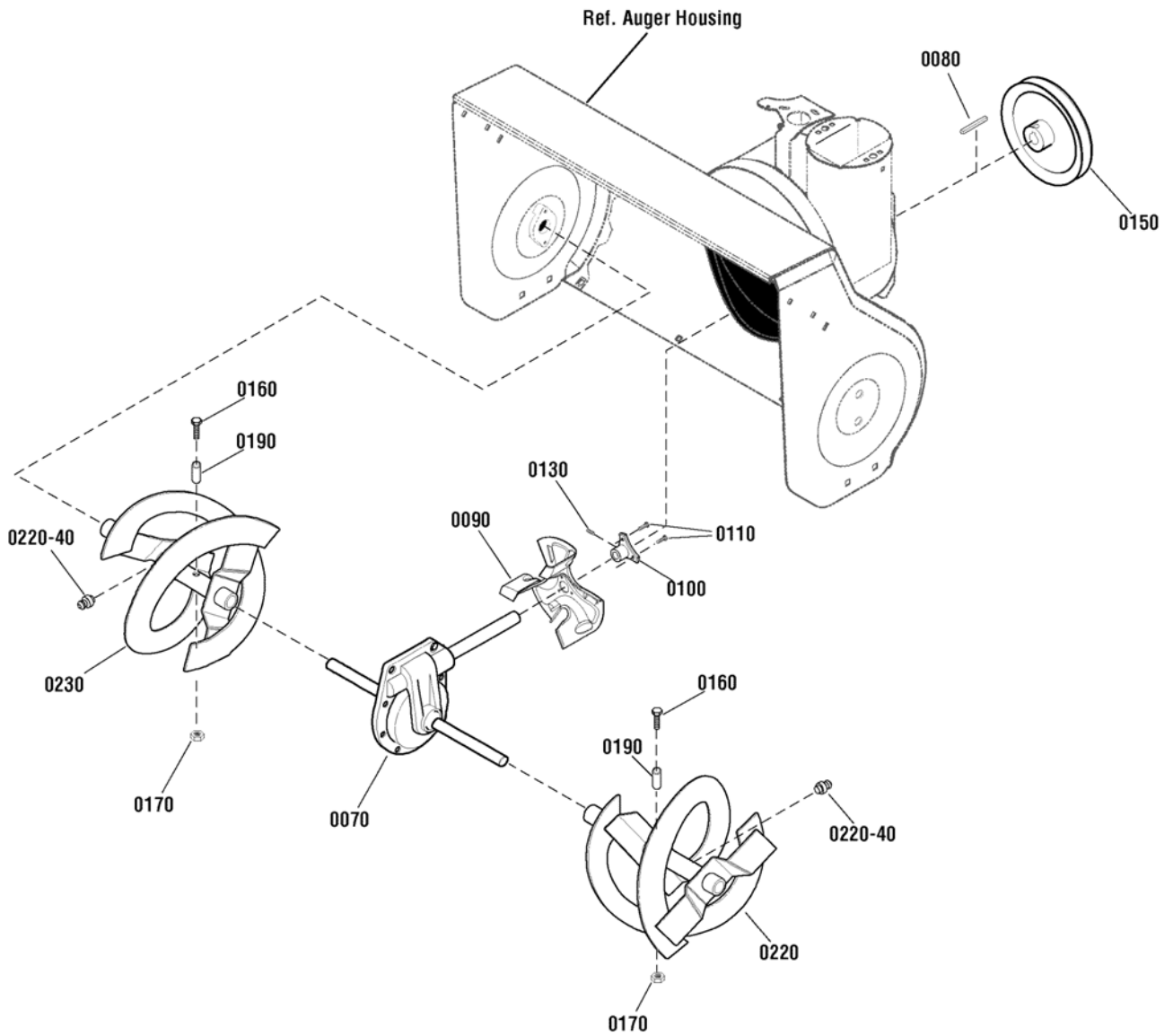


Item	Part No	Qty	Description
0010	1687511	1	AUGER HOUSING ASSEMBLY, 24"
0020	1736620	2	CLIP, Retainer
0030	1960569	2	SCREW, Truss Head Torx, #10-24 x 3/8
0040	722401	2	NUT, Nylock, 10 x 26
0060	1736094	1	BRUSH, Cleanout
0070	724427	2	BEARING, Auger Shaft
0080	722839	4	CAPSCREW, Hex Head, 5/16-18 x 3/4
0090	7091547	4	BOLT, Carriage, 3/8-16 x 3/4, GR5
0100	7091619	4	NUT, Hex Flange, 3/8-16
0110	725273	7	NUT, Hex Flange, Serrated Lock, 5/16-18
0150	1727854A	2	SHOE, Skid, Reversible
0160	1738301A	1	BLADE, Scraper, 24"
0170	724712	1	RETAINER, Ball Bearing
0180	1705897	1	BEARING, Ball
0190	720018	3	BOLT, Hex, 5/16-18 x 5/8
0200	725521	2	PLUG, Panel
0210	7090799	4	BOLT, Carriage, 3/8-16 x 5/8, GR5

Not for
Reproduction

Footnotes:

Auger Drive Group

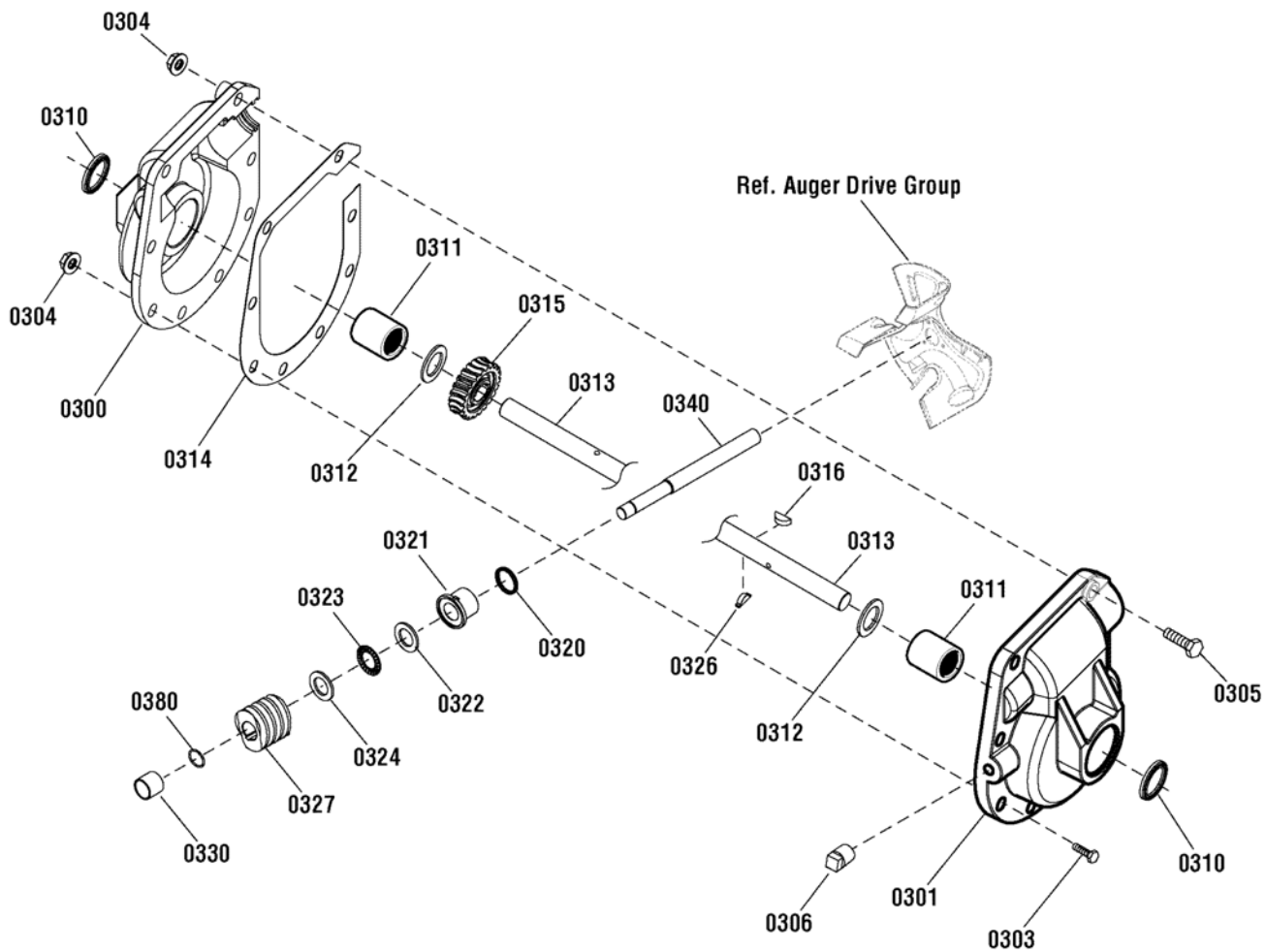


Item	Part No	Qty	Description
0070	1753072	1	GEAR CASE ASSEMBLY
0080	722726	1	KEY, Square, 3/16 x 3/4
0090	1739094A	1	IMPELLER
0100	1739073	1	HUB, Impeller
0110	1930601	3	SCREW, Hex Washer Head, 5/16-18 x 5/8
0130	7090848	3	SET SCREW, Socket Head, 5/16-18 x 1/2
0150	722128	1	PULLEY
0160	726061	2	CAPSCREW, Hex Head, 1/4-20 x 1-3/4, G2
0170	725429	2	NUT, Hex Centerlock, 1/4-20
0190	723913	2	SPACER, Sleeve, 1/4 x 1/2
0220	1738299A	1	AUGER, LH, 24"
0230	1738300A	1	AUGER, RH, 24"
0220-40	721620	2	FITTING, Grease
--	722130	1	KIT, Shear Bolt (Includes Ref. Nos. 0160, 0170 & 0190)

Not for
Reproduction

Footnotes:

Gear Case Assembly

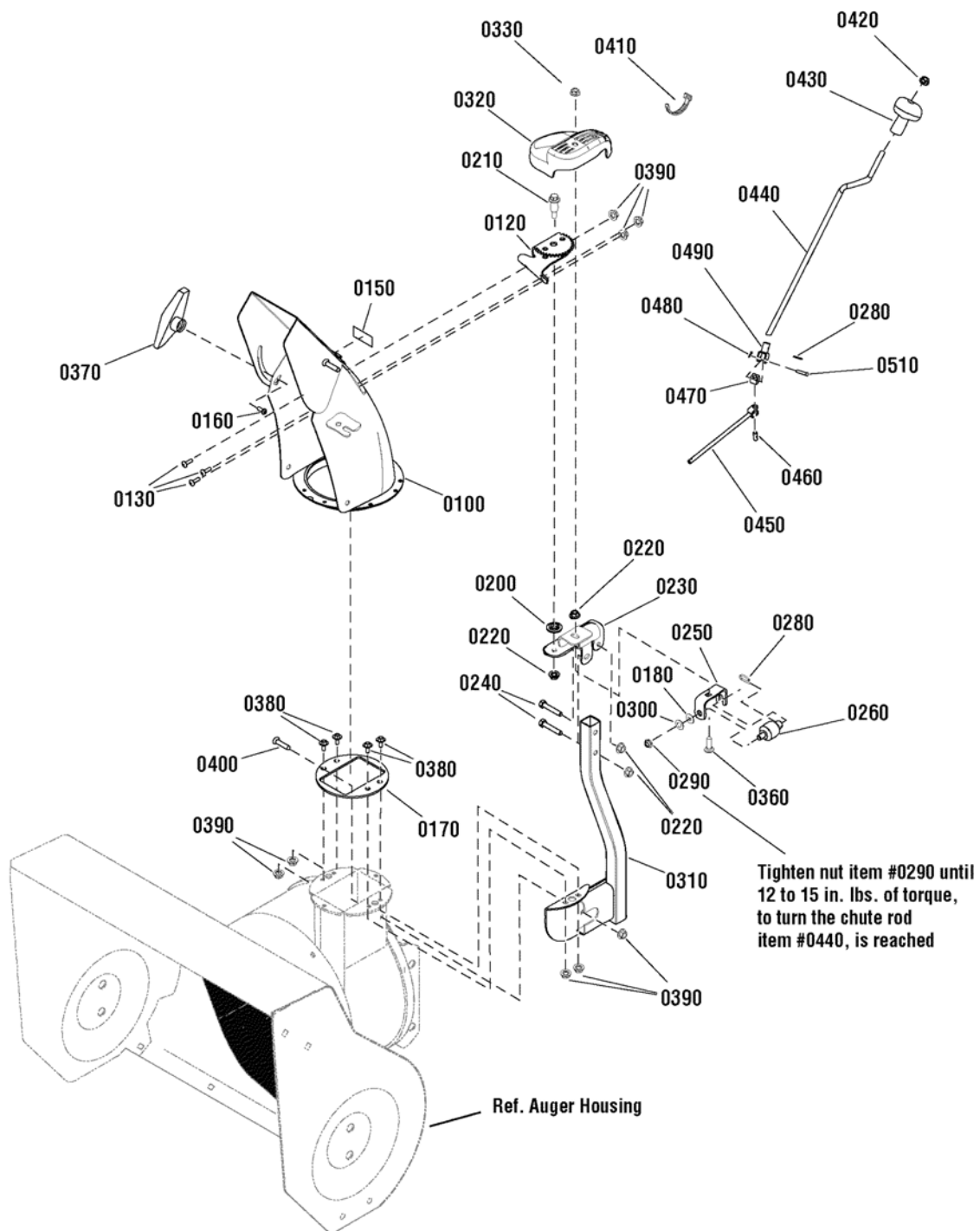


Item	Part No	Qty	Description
0300	725982	1	CASE, Gear, RH
0301	725981	1	CASE, Gear, LH
0303	725996	7	CAPSCREW, Hex, 5/16-24 X 1
0304	725338	8	NUT, Hex Flange, Serrated, 5/16-24
0305	723575	1	CAPSCREW, Hex Head, 5/16-24 x 1-1/2
0306	724426	1	PLUG, Pipe, 1/4-18
0310	725874	2	SEAL, Oil
0311	724424	2	BEARING, Sleeve, 1 x 1-1/4 x 1
0312	724425	2	WASHER, Flat, 1
0313	1739058	1	SHAFT, Auger Out
0314	725983	1	GASKET
0315	1752500	1	GEAR, Worm
0316	725433	1	KEY, Woodruf
0320	724423	1	RING, Quad
0321	724729	1	BEARING, Flange, 3/4ID x 1-1/8 OD
0322	724079	1	WASHER, Thrust
0323	724352	1	BEARING, Roll Thrust, 3/4 ID x 1-1/4 OD
0324	724079	1	WASHER, Thrust
0326	724366	1	KEY, Hi-Pro
0327	724421	1	WORMGEAR
0330	724420	1	BEARING, Sleeve, 3/4 ID x 7/8 OD
0340	1751535	1	SHAFT, Impeller
0380	1752515	1	RING, Retaining, 3/4"

Not for
Reproduction

Footnotes:

Chute & Rotation Group - Dash Mount Crank

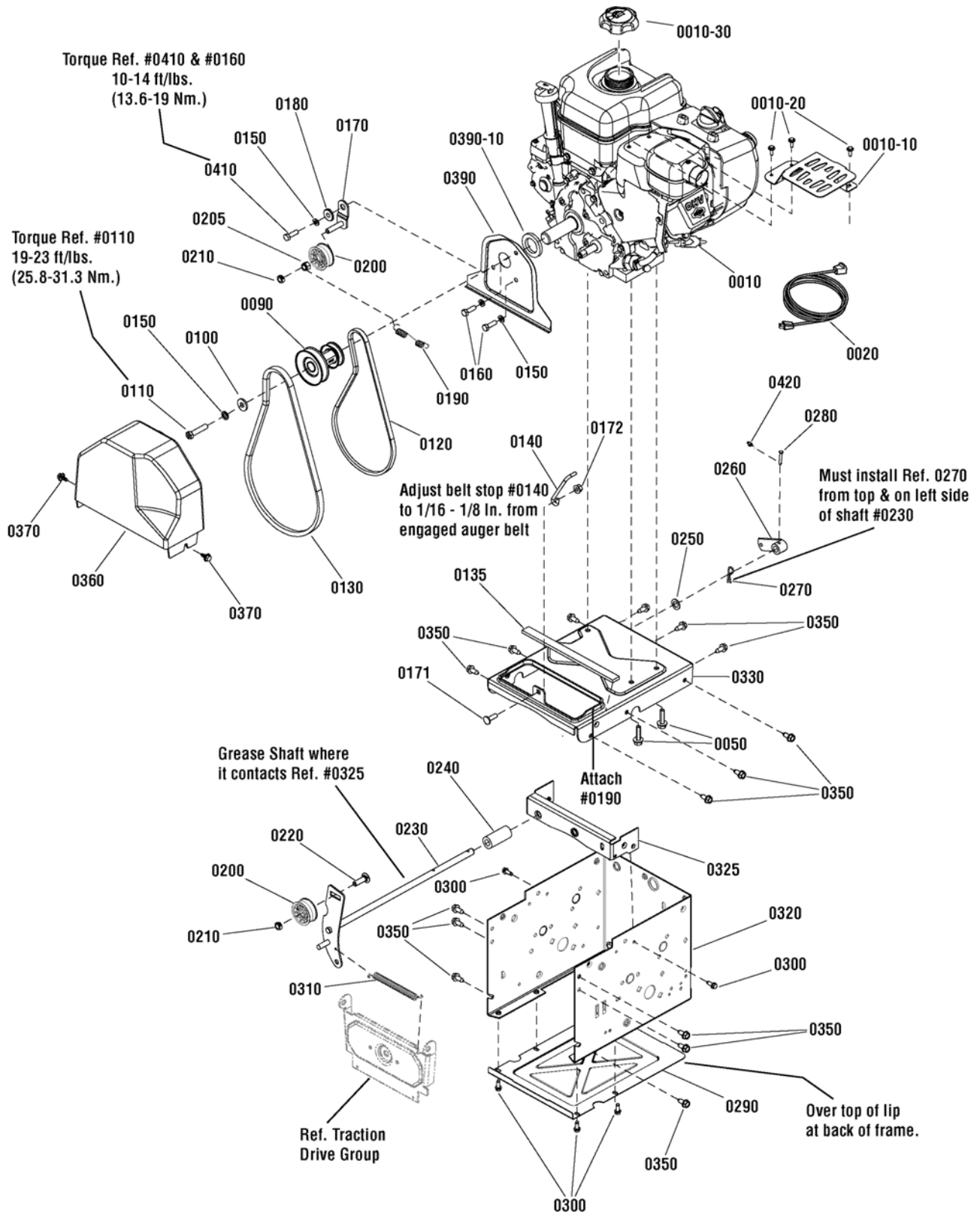


Chute & Rotation Group - Dash Mount Crank

Item	Part No	Qty	Description
0100	1736379D	1	CHUTE ASSEMBLY, Red
0120	1736038	1	GEAR, Chute Support
0130	1960715	3	SCREW, Truss-Head, Torx, 1/4-20 x 3/4
0150	1738340	2	DECAL, Hinge
0160	720064	1	BOLT, Carriage, 5/16-18 x 1-1/2
0170	1735767	1	GUARD, Chute Ring
0180	2860210	2	WASHER, Nylon, 3/8
0200	1733026	1	WASHER, 1/2 x 1-1/8 OD
0210	1732412	1	BOLT, Shoulder, 5/16-18 X 5/8, G5
0220	1960684	4	NUT, Hex, Conical Washer, 5/16-18
0230	1734423A	1	SUPPORT, Gear Crank
0240	1922127	2	CAPSCREW, Hex-Head, 5/16-18 x 1-3/4, G5
0250	1738020	1	SUPPORT, Worm, Clear
0260	1734439	1	GEAR, Worm, Chute, L.H.
0280	722139	2	PIN, Hair, Chute Gear
0290	1960762	1	NUT, Locking, 3/8-24
0300	1734542	1	WASHER, Cup, 3/8
0310	1736195A	1	CHUTE SUPPORT ASSEMBLY
0320	1734442	1	COVER, Gear
0330	1935048	1	NUT, Hex-Flange, Locking, 5/16-18
0360	1931335	1	BOLT, Carriage, 5/16-18 X 1, G5
0370	722136	1	KNOB, Wing 5/16-18
0380	95118	4	SCREW, Shoulder, Hex-Washer, 11/16
0390	5025391	8	NUT, Nylock, 1/4-20
0400	720386	1	BOLT, Carriage, 1/4-20 X 3/4
0410	7012080	2	TIE, Self-Locking
0420	1960093	1	PUSHNUT, 3/8 Dia.
0430	1714084	1	KNOB, Spinner, 3/8 ID, 2-3/16 OD, 2-1/2 Lg
0440	1735661	1	CRANK, Chute Hande
0450	1735660	1	ROD & YOKE ASSEMBLY
0460	724564	1	PIN, Universal Joint, 3/8 X 1
0470	724565	1	BLOCK, Universal Pivot
0480	724605	1	PIN, Cotter, 5/8 X 1/2
0490	1733611	1	YOKE TUBE ASSEMBLY, Chute
0510	724579	1	PIN, Clevis, 1/4 X 1-3/16

Footnotes:

Engine & Frame Group

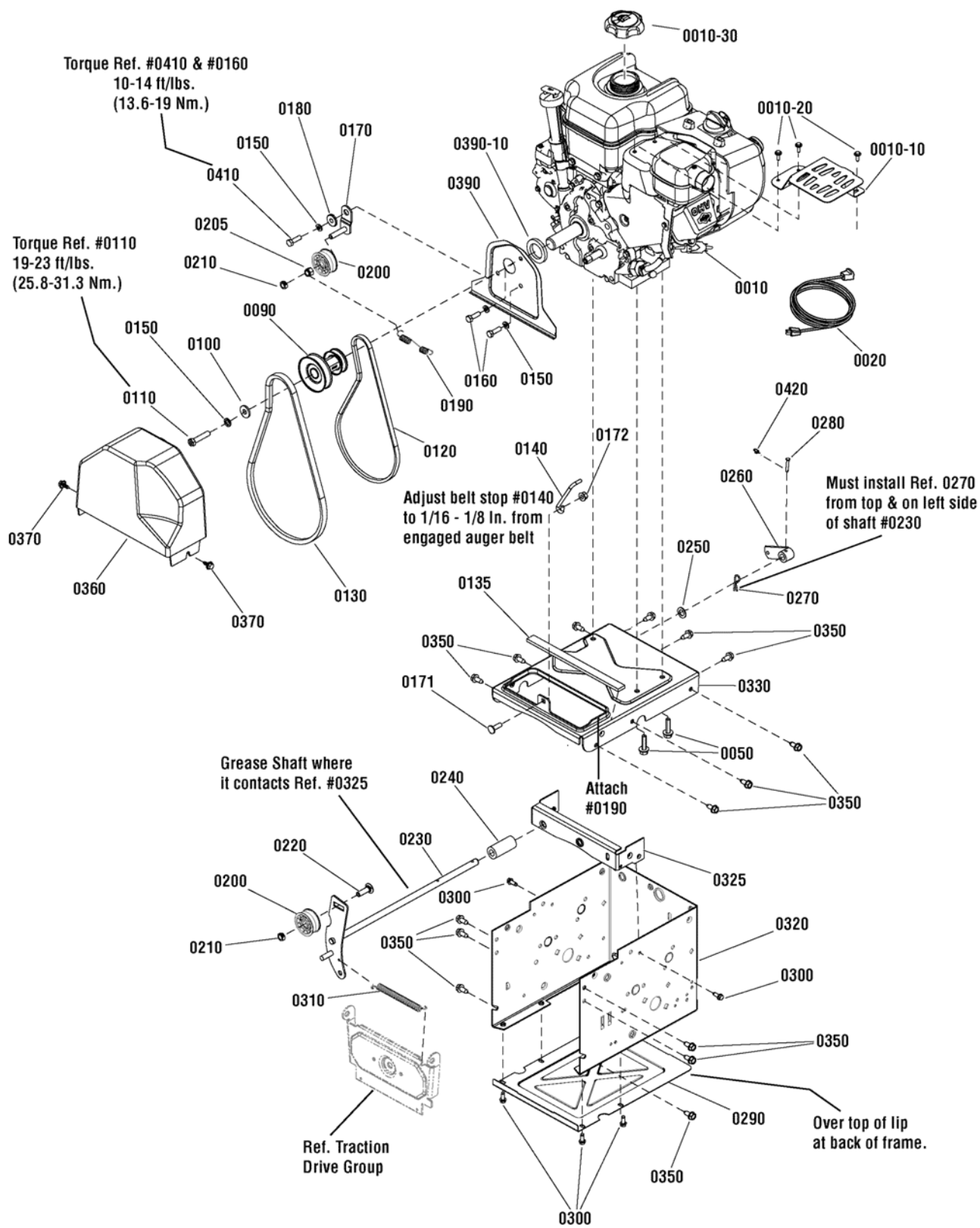


Item	Part No	Qty	Description
0010	12D114-0149-E8	1	* ENGINE, 9TP Briggs & Stratton (Engine Model: 12D114-0149-E8)
0010-10	797003	1	* GUARD, Muffler
0010-20	699854	2	* SCREW, Muffler Guard
0010-30	795027	1	* CAP, Fuel
0020	724865	1	CORD, Electric
0050	75246	4	SCREW, Hex Head, Trilobular, 3/8-16 x 1-1/4
0090	1739514	1	PULLEY
0100	1919381	1	WASHER, 5/16
0110	722041	1	CAPSCREW, Hex Head, 5/16-24, 1-3/4, G5
0120	1733324	1	V-BELT, Traction Drive, 3L, 33.13
0130	724801	1	BELT, Auger Drive, V4L 38.10
0135	1750314	1	SEAL, Strip
0140	1737377	1	STOP, Belt
0150	1917356	4	LOCKWASHER, Spring, 5/16 (Qty 3 used on 14.5TP models)
0160	1921515	2	CAPSCREW, Hex Head, 5/16-24 x 3/4, G5
0170	1739846	1	BRACKET, Idler
0171	1931335	1	BOLT, Carriage, Short Neck, 5/16-18 x 1, G5
0172	1960684	1	NUT, Hex KEPS, 5/16-18
0180	722072	1	BUSHING, Idler Bracket
0190	722457	1	SPRING, Extension, Idler
0200	722378	2	IDLER
0205	7091299	1	NUT, Hex Nylock, 3/8-16
0210	1960251	2	NUT, Hex Centerlock Jam, 3/8-16
0220	724823	1	BOLT, Carriage, Short Neck, 3/8-16 x 1-1/2, G5
0230	1739574	1	IDLER, Auger
0240	1739964	1	SPACER, Auger Bracket
0250	1960027	1	WASHER, 1/2
0260	1733451	1	ARM, Control
0270	725367	1	PIN, Hair
0280	1736381	1	PIN, Clevis
0290	1737221A	1	PANEL, Bottom
0300	1927429	6	SCREW, Hex Washer Head, Taptite, 1/4-20 x 5/8
0310	722455	1	SPRING, Extension, Auger
0320	1739107D	1	FRAME
0325	1739093A	1	ANGLE, Auger & Traction Rod Mounting
0330	1739450D	1	PLATE, Engine
0350	1664847	15	SCREW, Hex Washer Head, Taptite, 5/16-18 x 3/4
0360	1750551	1	COVER, Belt
0370	1751355	2	SCREW, Hex Washer Head, Tap, SEMS, 1/4-20 x 3/4
0390	1733868A	1	PLATE, Seal (Used on 11.5TP Models)

Footnotes:

Note* See your local Briggs & Stratton Distributor for Parts & Service.

Engine & Frame Group



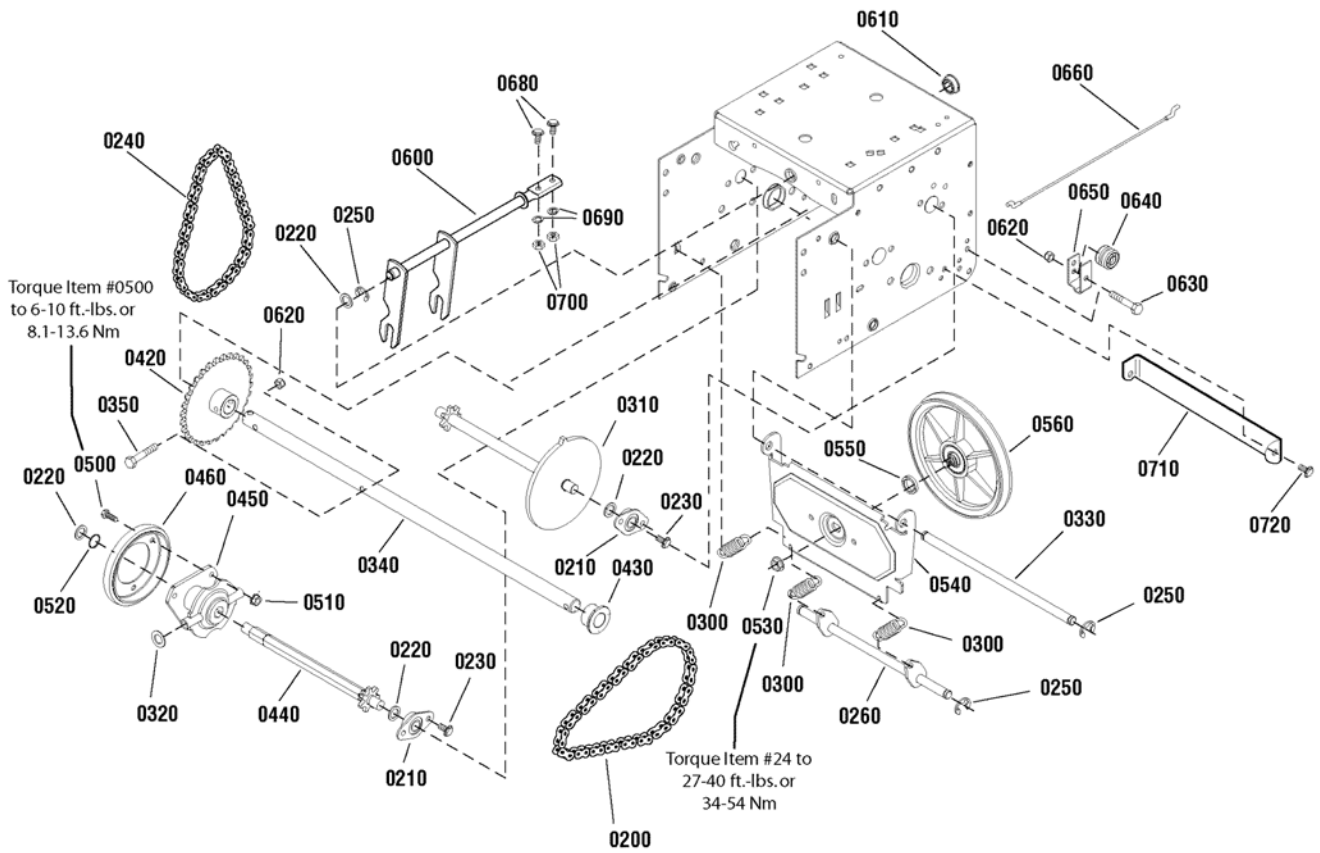
Item	Part No	Qty	Description
0390-10	1733898	1	SEAL, Foam (Used on 11.5TP Models)
0410	725996	1	BOLT, Hex, 5/16-24 x 1
0420	7023590	1	PIN, Cotter, Self Locking, 1/4"

Not for
Reproduction

Footnotes:

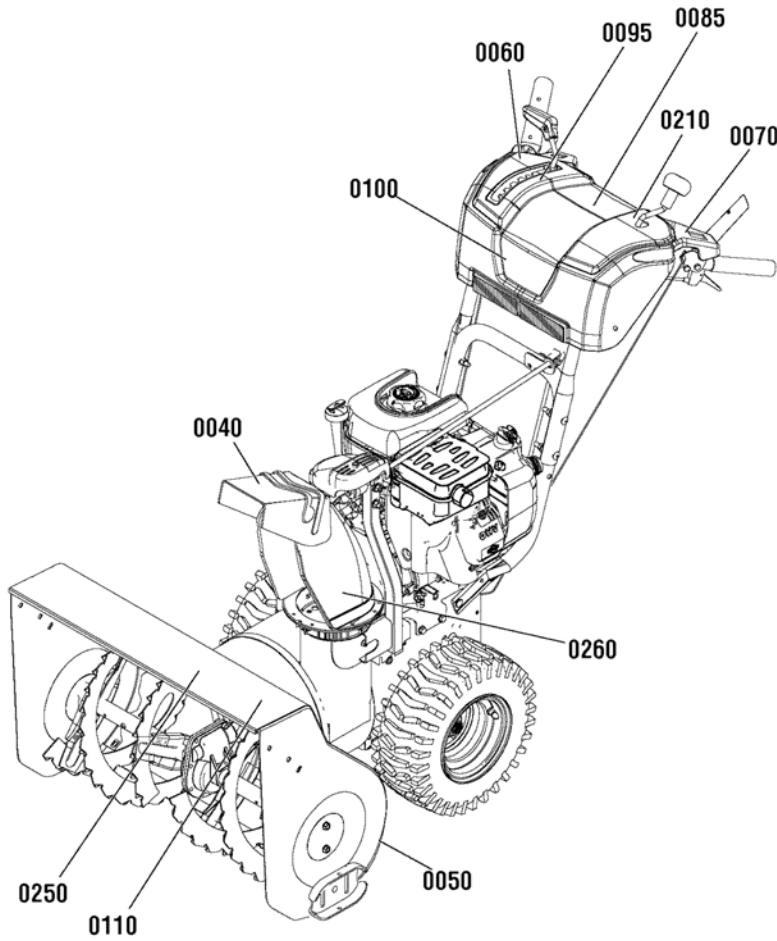
Note* See your local Briggs & Stratton Distributor for Parts & Service.

Traction Drive Group - Standard



Item	Part No	Qty	Description
0200	724613	1	CHAIN, Roller, 19"
0210	723655	4	RETAINER & BUSHING ASSEMBLY
0220	724619	5	WASHER, Flat, 1/2
0230	1924856	8	SCREW, Hex Washer Head, Taptite, 5/16-18 x 1/2
0240	724627	1	CHAIN, Roller, 18 Inch
0250	721910	5	RETAINER, Ring, 7/16
0260	722377	1	SPRING LINK
0300	1736469	3	SPRING, Extension
0310	722081	1	SPROCKET
0320	1960027	2	WASHER, 1/2
0330	722082	1	AXLE, Swing Plate
0340	722211	1	AXLE, 23-1/8 Lg
0350	720220	1	BOLT, Hex, 1/4-20 x 1-3/4, G8
0420	722080	1	AXLE SPROCKET, 30T
0430	722091	2	BEARING, Axle, D-Hole
0440	722083	1	HEX SHAFT & SPROCKET ASSEMBLY
0450	1739282	1	HUB, Friction Wheel and Bearing
0460	722185	1	WHEEL, Friction
0500	1921959	3	CAPSCREW, Hex Head, 1/4-20 x 5/8 G5
0510	1928372	3	NUT, Hex Keps, 1/4-20
0520	1733326	1	RING, Retaining
0530	722391	1	NUT, Flange Lock, 3/8-24
0540	722069	1	PLATE, Swinging
0550	722110	1	SPACER, Friction Pulley
0560	722092	1	FRICTION PULLEY ASSEMBLY
0600	722087	1	SPEED SELECTOR ASSEMBLY
0610	724636	1	BEARING, Flange, 1/2ID x 7/8OD
0620	1920397	2	NUT, Hex Lock, ESNA Light, 1/4-20
0630	1922837	1	CAPSCREW, Hex Head, 1/4-20 x 1-1/2 G5
0640	724621	1	CABLE SPOOL, Auger Control
0650	1750398	1	BRACKET, Cable Spool
0660	1750403	1	CABLE, Front Lower Drive
0680	720017	2	BOLT, Hex, 1/4-20 x 5/8
0690	7091576	2	NUT, Hex, 1/4-20, G5
0700	1916964	2	LOCKWASHER, Spring, 1/4
0710	722364	1	BRACKET, Support
0720	1927429	2	SCREW, Hex Washer Head, Taptite, 1/4-20 x 5/8

Footnotes:



⚠ DANGER
Amputation hazard
 Contact with moving parts inside chute will cause serious injury.
 • Shut off engine before unclogging discharge chute.
 • Use clean-out tool, not hands!

Risque d'amputation
 Tout contact avec des pièces en mouvement à l'intérieur de la goulotte provoquera de graves blessures.
 • Arrêter le moteur avant de dégager la goulotte d'éjection.
 • Utiliser l'outil de dégagement, pas les mains!

1727960

0040

⚠ DANGER

<p>Amputation Hazard • Contact with auger will cause serious injury. • Keep hands, feet and clothing away. • Keep bystanders away.</p>		<p>Risque d'amputation • Tout contact avec la tarière provoquera de graves blessures. • Tenir vos pieds, vos mains et vêtements à distance. • Tenir les spectateurs à distance.</p>
<p>Thrown Objects Hazard • Never direct discharge chute towards persons or property.</p>		<p>Danger objets projetés • Ne jamais diriger la chute en direction des personnes ou biens matériels.</p>
<p>Read the operator's manual for operating and safety instructions.</p>		<p>Lirez les consignes de sécurité et d'utilisation dans le manuel d'utilisation.</p>
<p>Shut off engine and remove key before performing maintenance or repair work.</p>		<p>Arrêter le moteur et retirer la clé avant d'effectuer tout entretien ou toute réparation.</p>

This and other safety symbols with the English version 020-020. Ce symbole et d'autres symboles de sécurité sont contenus à la norme ANSI Z39-32.

0050



0100



0110



0260



0250



0210



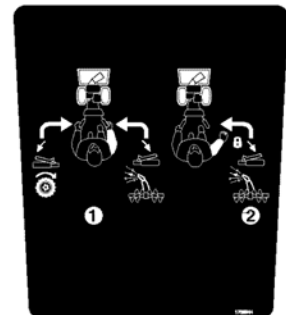
0095



0060



0070



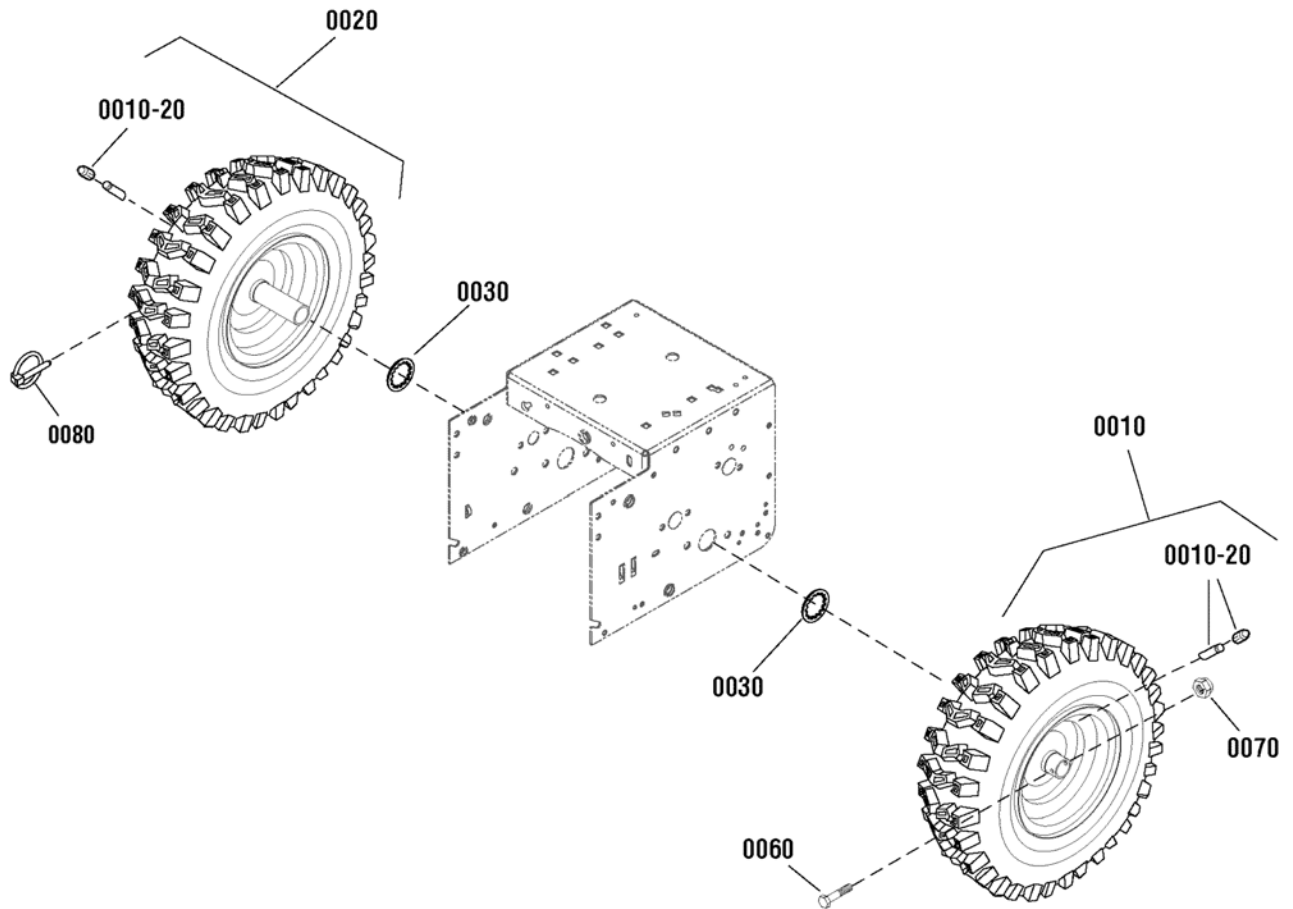
0085

Item	Part No	Qty	Description
0040	1737865	1	DECAL, Danger Chute, FR/ENG
0050	1737866	1	DECAL, Danger Foot, FR/ENG
0060	1737869	1	DECAL, Auger Control Symbols
0070	1737870	1	DECAL, Traction Control Symbols
0085	1738344	1	DECAL, Free Hand Operation Panel
0095	1738349	1	DECAL, Speed Control
0100	1750407	1	DECAL, Logo, Panel
0110	1751401	1	DECAL, Logo, Auger Housing
0210	1738348	1	DECAL, Crank, Chute Rotation
0250	1750408	1	DECAL, Model
0260	1752570	2	DECAL, Turtle

Not for
Reproduction

Footnotes:

Wheel & Tire Group



Item	Part No	Qty	Description
0010	1739926	1	WHEEL & TIRE ASSEMBLY, 16 x 4.8, LH (Includes Ref. No. 0010-20)
0020	1739927	1	WHEEL & TIRE ASSEMBLY, 16 x 4.8, RH (Includes Ref. No. 0010-20)
0010-20	2172353	2	VALVE STEM & CAP
0030	1657528	2	RING, Retaining, Self Lock, #75, 3/4
0060	724545	1	CAPSCREW, Hex Head, 1/4-20 x 1-3/4
0070	722400	1	NUT, Hex Nylock, 1/4-20
0080	725431	1	PIN, Klik, 1/4 x 1-3/8

Not for
Reproduction

Footnotes:

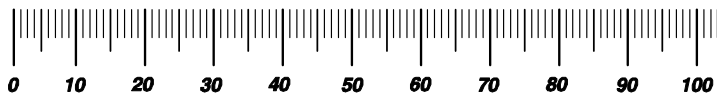
Not for
Reproduction

Hardware Identification & Torque Specifications

Torque Specification Chart								
FOR STANDARD METRIC MACHINE HARDWARE (Tolerance ± 20%)								
Property Class	5.6		8.8		10.9		12.9	
	Class 5.6		Class 8.8		Class 10.9		Class 12.9	
Size Of Hardware	in/lbs		in/lbs		in/lbs		in/lbs	
	ft/lbs	Nm.	ft/lbs	Nm.	ft/lbs	Nm.	ft/lbs	Nm.
M3	5.88	.56	13.44	1.28	19.2	1.80	22.92	2.15
M4	13.44	1.28	30.72	2.90	43.44	4.10	52.56	4.95
M5	26.4	2.50	60.96	5.75	5.97	8.10	7.15	9.7
M6	44.64	4.3	7.3	9.9	10.3	14	12.1	16.5
M7	5.2	7.1	12.1	16.5	16.9	23	19.9	27
M8	7.7	10.5	17.7	24	25	34	29	40
M10	15	21	35	48	50	67	59	81
M12	26	36	61	83	86.2	117	103	140
M14	42	58	101	132	136	185	162	220
M16	64	88	147	200	210	285	250	340
M18	89	121	202	275	287	390	346	470
M20	126	171	290	390	405	550	486	660
M22	169	230	390	530	559	745	656	890
M24	217	295	497	375	708	960	840	1140
M27	320	435	733	995	1032	1400	1239	1680
M30	435	590	995	1350	1401	1900	1681	2280
M33	590	800	1349	1830	1902	2580	2278	3090
M36	759	1030	1740	2360	2441	3310	2935	3980
M39	988	1340	2249	3050	3163	4290	3798	5150

Torque Specification Chart						
FOR STANDARD MACHINE HARDWARE (Tolerance ± 20%)						
Hardware Grade	No Marks		SAE Grade 5		SAE Grade 8	
	SAE Grade 2		SAE Grade 5		SAE Grade 8	
Size Of Hardware	in/lbs		in/lbs		in/lbs	
	ft/lbs	Nm.	ft/lbs	Nm.	ft/lbs	Nm.
8-32	19	2.1	30	3.4	41	4.6
8-36	20	2.3	31	3.5	43	4.9
10-24	27	3.1	43	4.9	60	6.8
10-32	31	3.5	49	5.5	68	7.7
1/4-20	66	7.6	8	10.9	12	16.3
1/4-28	76	8.6	10	13.6	14	19.0
5/16-18	11	15.0	17	23.1	25	34.0
5/16-24	12	16.3	19	25.8	29	34.0
3/8-16	20	27.2	30	40.8	45	61.2
3/8-24	23	31.3	35	47.6	50	68.0
7/16-14	30	40.8	50	68.0	70	95.2
7/16-20	35	47.6	55	74.8	80	108.8
1/2-13	50	68.0	75	102.0	110	149.6
1/2-20	55	74.8	90	122.4	120	163.2
9/16-12	65	88.4	110	149.6	150	204.0
9/16-18	75	102.0	120	163.2	170	231.2
5/8-11	90	122.4	150	204.0	220	299.2
5/8-18	100	136	180	244.8	240	326.4
3/4-10	160	217.6	260	353.6	386	525.0
3/4-16	180	244.8	300	408.0	420	571.2
7/8-9	140	190.4	400	544.0	600	816.0
7/8-14	155	210.8	440	598.4	660	897.6
1-8	220	299.2	580	788.8	900	1,244.0
1-12	240	326.4	640	870.4	1,000	1,360.0

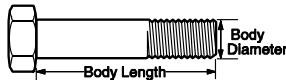
The guides and ruler furnished below are designed to help you select the appropriate hardware.



Nut, M8

Thread Diameter (mm)
Inside Diameter (in) Threads per inch

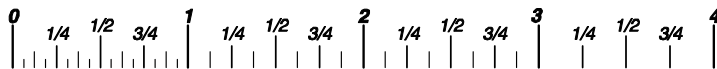
Nut, 1/2-16



Screw, M8- 1.25 x 25

Thread Diameter (mm) Distance between threads (mm) Body Length (mm)
Body Diameter Threads per inch Body Length (in)

Screw, 1/2- 16 x 2



Standard Hardware Sizing

When a washer or nut is identified as 1/2" (M8), this is the *Nominal size*, meaning the *inside diameter* is 1/2 inch (8mm metric thread diameter); if a second number is present it represents the *threads per inch* (distance between threads).

When bolt or capscrew is identified as 1/2 - 16 x 2" (M8 - 1.25 x 50), this means the *Nominal size*, or body diameter is 1/2 inch (8mm metric thread diameter), the second number, 16, represents the *threads per inch*, (1.25 thread diameter). The final number is the body length of the bolt or screw, 2 inches (50mm).

NOTES

- These torque values are to be used for all hardware excluding: locknuts, self-tapping screws, thread forming screws, sheet metal screws and socket head setscrews.
- Recommended seating torque values for locknuts:
 - for prevailing torque locknuts - use 65% of grade 5 torques.
 - for flange whizlock nuts and screws - use 135% of grade 5 torques.
- Unless otherwise noted on assembly drawings, all torque values must meet this specification.

Common Hardware Types

Hex Head Capscrew



Washer



Carriage Bolt



Lockwasher



Hex Nut



Wrench & Fastener Size Guide

1/4" Bolt or Nut Wrench—7/16"	5/16" Bolt or Nut Wrench—1/2"	3/8" Bolt or Nut Wrench—9/16"	7/16" Bolt or Nut Wrench (Bolt)—5/8" Wrench (Nut)—11/16"	1/2" Bolt or Nut Wrench—3/4"
M6 Bolt or Nut Wrench—10mm	M8 Bolt or Nut Wrench—13mm	M10 Bolt or Nut Wrench—17mm	M12 Bolt or Nut Wrench—19mm	M14 Bolt or Nut Wrench—22mm

Parts Manual for

SNAPPER®

24" 9TP TWO STAGE INTERMEDIATE SNOWTHROWER 2011

Not for
Reproduction

IT IS THE POLICY OF BRIGGS & STRATTON CORP TO IMPROVE ITS PRODUCTS WHENEVER IT IS POSSIBLE AND PRACTICAL TO DO SO. WE RESERVE THE RIGHT TO MAKE CHANGES OR ADD IMPROVEMENTS AT ANY TIME WITHOUT INCURRING ANY OBLIGATION TO MAKE SUCH CHANGES ON PRODUCTS

Briggs & Stratton Yard Power Products Group

535 Macon Road
McDonough, GA, 30253 U.S.A.
800-935-2967

www.snapper.com

Copyright © 2011 Briggs & Stratton Corporation
Milwaukee, WI USA. All Rights Reserved

Manual No. 7105282

Revision: - 6/14/2011