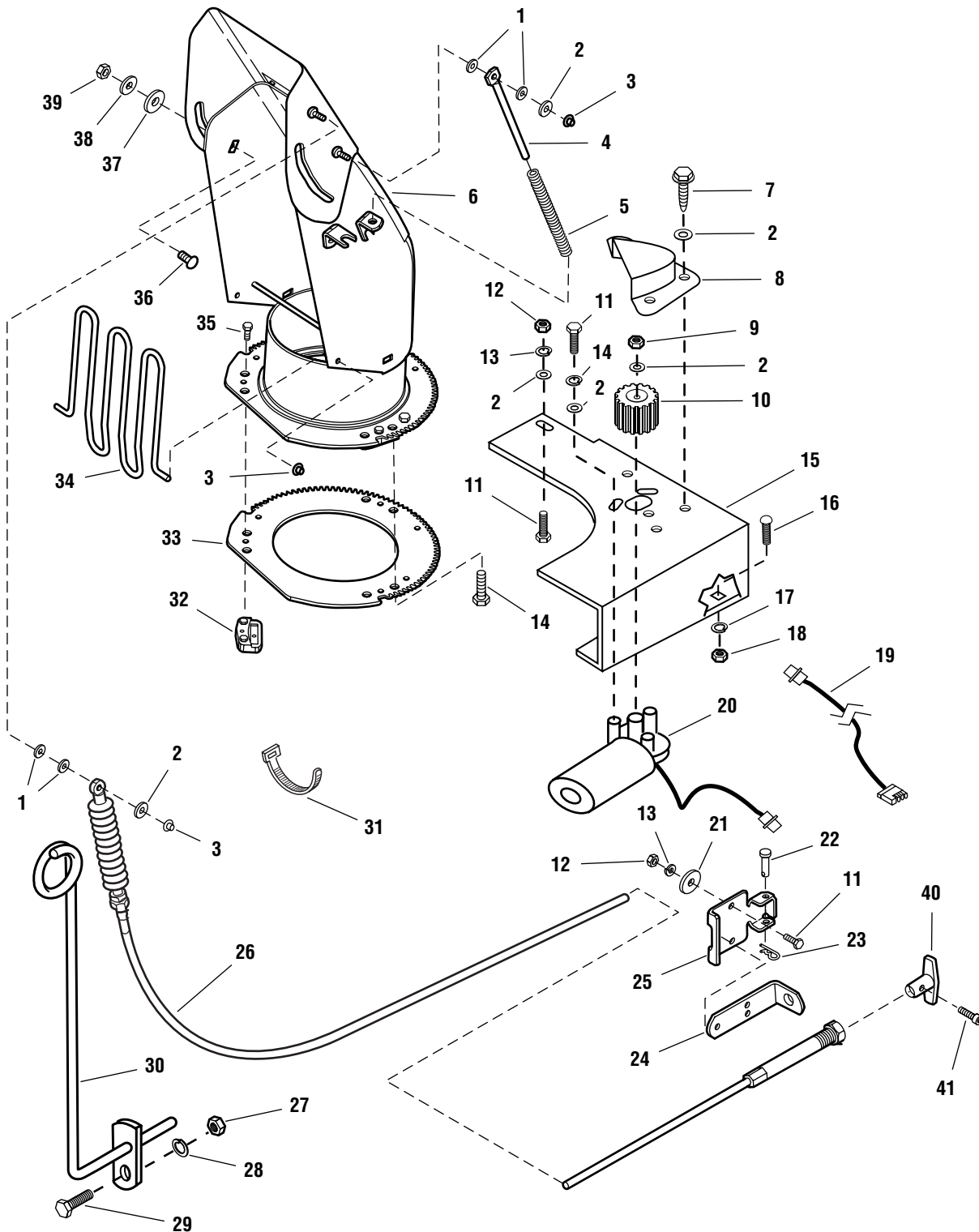


Single-Stage Snowthrower, 46" - Spout Group

985782

NOTE: Unless noted otherwise,
use the standard hardware torque
specification chart.



The above parts group applies to the following Mfg. Nos.:

1693761 Single-Stage Snowthrower, 46"

Single-Stage Snowthrower, 46" - Spout Group

REF NO.	PART NO.	QTY.	DESCRIPTION
1	1702219	4	SPACER
2	1921319	9	WASHER, 1/4
3	1960126	4	NUT, Push, 1/4
4	1611945	1	ROD
5	1611939	1	SPRING
6	1721601	1	CHUTE & DEFLECTOR ASSEMBLY
7	1925003	3	SCREW, Hex Head, Taptite, 1/4-20 x 1/2
8	1717481	1	COVER, Pinion
9	1923358	1	NUT, Hex, Centerlock, 1/4-20
10	1717480	1	PINION, 15 Teeth
11	1924009	6	CAPSCREW, Hex Head, 1/4-20 x 7/8
12	1916622	3	NUT, Hex, 1/4-20
13	1916964	6	LOCKWASHER, 1/4
14	1923341	4	CAPSCREW, Hex Head, 1/4-20 x 3/4
15	1721751	1	SUPPORT, Motor
16	1931348	2	CARRIAGE BOLT, 3/8-16 x 3/4
17	1916965	2	LOCKWASHER, 3/8
18	1916950	2	NUT, Hex 3/8-16
19	1717483	1	HARNES ASSEMBLY
20	1715885	1	MOTOR, Electric
21	1960151	2	WASHER, 1/4
22	1668344	1	PIN, Flat Head Drilled
23	1960221	1	CLIP, Hair Pin
24	1705920	1	BRACKET
25	1721590	1	BRACKET
26	1717482	1	CABLE & KNOB ASSEMBLY
27	1917372	1	NUT, Hex, 5/16-18
28	1917356	1	LOCKWASHER, 5/16
29	1921333	1	CAPSCREW, Hex Head, 5/16-18 x 1
30	1717591	1	ROD & BAR ASSEMBLY
31	1701011	1	CABLE TIE
32	1666613	3	HOLD DOWN
33	1717477	1	GEAR
34	1704446	1	GUARD & SUPPORT ASSEMBLY
35	1960001	3	SCREW, Hex Head Taptite 10-14 x 5/8
36	1931333	1	CARRIAGE BOLT, 5/16-18 x 3/4
37	960210	1	WASHER
38	1919326	1	WASHER, 5/16
39	1919438	1	NUT, Hex Lock ESNA 5/16-18
40	1715799	1	HANDLE "T"
41	1930547	1	SCREW, Set Hex #10-24 x 3/8

Footnotes:

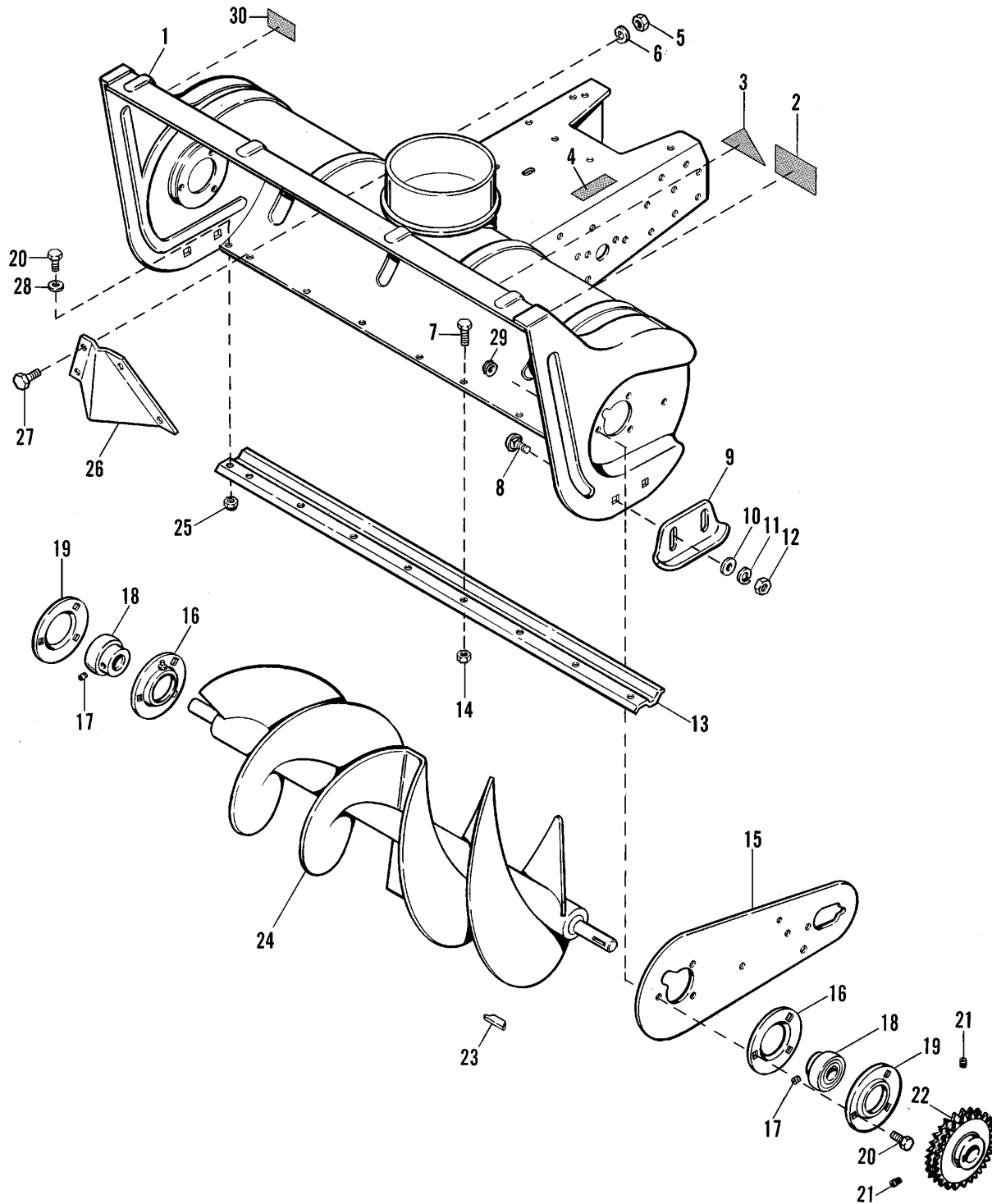
The above parts group applies to the following Mfg. Nos.:

1693761 Single-Stage Snowthrower, 46"

Single-Stage Snowthrower, 46" - Body & Auger Group

985247

NOTE: Unless noted otherwise,
use the standard hardware torque
specification chart.



The above parts group applies to the following Mfg. Nos.:

1693761 Single-Stage Snowthrower, 46"

Single-Stage Snowthrower, 46" - Body & Auger Group

REF NO.	PART NO.	QTY.	DESCRIPTION
1	1717479	1	BODY & FRAME ASSEMBLY
2	1716532	1	DECAL, Danger, Auger
3	*		DECAL, OPEI (Not Serviced)
4	*		DECAL, I.D. Plate (Not Serviced)
5	1917372	4	NUT, Hex, 5/16-18
6	1917356	4	LOCKWASHER, 5/16
7	1921959	9	CAPSCREW, Hex Head, 1/4-20 x 5/8
8	1931348	4	CARRIAGE BOLT, 3/8-16 x 3/4
9	1713424	2	SKID SHOE
10	1924940	4	WASHER, 3/8
11	1916965	4	LOCKWASHER, 3/8
12	1916950	4	NUT, Hex, 3/8-16
13	1717472	1	SCRAPER BAR
14	1923358	9	NUT, Hex Lock, 1/4-20
15	1676632	1	PLATE, Side
16	172279	2	BEARING, Flange
17	1960110	2	SETSCREW, Square Head, Cup Point, 1/4-28 x 1/2, G8
18	173934	2	CARTRIDGE, Auger Bearing
19	172278	2	BEARING, Flange
20	1921332	8	CAPSCREW, Hex Head, 5/16-18 X 3/4
21	1677029	2	SET SCREW, 5/16 -18 x 3/8
22	1676721	1	DOUBLE SPROCKET ASSEMBLY, 29 Teeth
23	151040	1	KEY, 1/4
24	1721842	1	ROTOR ASSEMBLY
25	1923362	2	LOCKNUT, Hex, 5/16-18
26	106774	1	DEFLECTOR
27	1925205	4	CAPSCREW, Hex Head, 5/16-18 x 5/8
28	1919326	2	WASHER, 5/16
29	1935048	6	NUT, Hex Head, Whiz Lock, 5/16-18
30	1716531	1	DECAL, Caution

Footnotes:

* Not a Service Part

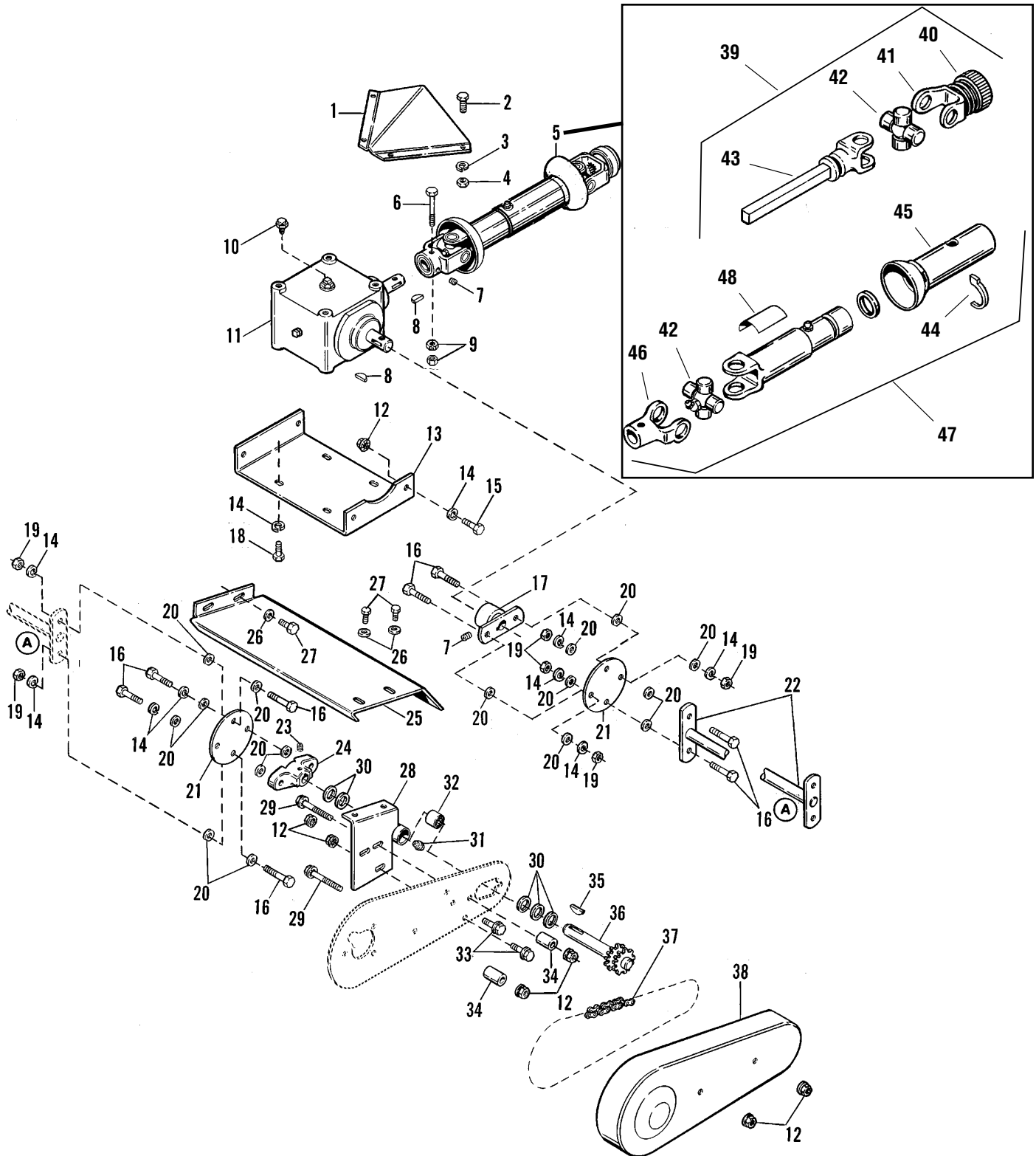
The above parts group applies to the following Mfg. Nos.:

1693761 Single-Stage Snowthrower, 46"

Single-Stage Snowthrower, 46" - Drive Group

985248

NOTE: Unless noted otherwise,
use the standard hardware torque
specification chart.



The above parts group applies to the following Mfg. Nos.:

1693761 Single-Stage Snowthrower, 46"

Single-Stage Snowthrower, 46" - Drive Group

REF NO.	PART NO.	QTY.	DESCRIPTION
1	106774	1	DEFLECTOR
2	1925205	4	CAPSCREW, Hex Head, 5/16-18 x 5/8
3	1917356	4	LOCKWASHER, 5/16
4	1917372	4	NUT, Hex, 5/16-18
5	1717484	1	DRIVE SHAFT ASSEMBLY (Incl. Ref. Nos 39-47)
6	1925688	1	CAPSCREW, Hex Head, 1/4-20 x 3
7	1930540	2	SETSCREW, Square Head, 5/16-18 x 5/8, G8
8	922138	2	KEY, Hi-Pro #HP708, 1/4
9	1923358	2	NUT, Hex, Lock, 1/4-20
10	1716790	1	PLUG, Socket Head
11	1717547	1	GEAR BOX ASSEMBLY, Right Angle (Serviced as a complete unit)
12	1928352	10	NUT, Hex Flange Whiz Lock, 3/8-16
13	1676053	1	BRACKET,
14	1916965	16	WASHER, Lock, 3/8
15	1921966	4	CAPSCREW, Hex Head, 3/8-16 x 7/8
16	1920415	8	CAPSCREW, Hex Head, 3/8-16 x 1-1/4
17	1676561	1	COUPLER ASSEMBLY, Drive
18	1921965	4	CAPSCREW, Hex Head, 3/8-16 x 3/4
19	1916950	6	NUT, Hex, 3/8-16
20	157424	16	WASHER, Special, 3/8
21	173026	2	COUPLING
22	1717097	1	SHAFT ASSEMBLY, Drive
23	1960475	1	SETSCREW, Hex Socket, 3/8-24 x 3/8
24	154198	1	FLANGE, Drive Shaft
25	1717100	1	COVER ASSEMBLY, Drive Shaft
26	1919326	4	WASHER, 5/16
27	1924856	4	CAPSCREW, Hex Head, Taptite, 5/16-18 x 1/2
28	1676554	1	SUPPORT ASSEMBLY, w/Bearings (Incl. Ref. No. 32)
29	1960244	2	CAPSCREW, Hex Head, Whiz Lock, 3/8-16 x 2-3/4
30	168111	5	WASHER, Hardened, Thrust
31	921133	1	FITTING, Grease, 1/4
32	1679211	2	BEARING, Needle
33	1934654	2	CAPSCREW, Hex Head, Whiz Lock, 3/8-16 x 1
34	1669105	2	SPACER
35	905123	1	KEY, Woodruff #9
36	1676722	1	SHAFT ASSEMBLY, 12 Teeth (Drive, Chain)
37	1676739	1	CHAIN, Roller, #40 - 32" Long
38	1676738	1	GUARD, Chain
39	1709346	1	JOINT & SHAFT ASSEMBLY, w/guard (Incl Ref. Nos. 40-43)
40	1718475	1	REPAIR KIT, Spring Lock
41	1709350	1	YOKE ASSEMBLY, Spring-Lock
42	1679003	1	CROSS & BEARING KIT
43	1709351	1	YOKE & SHAFT ASSEMBLY
44	1709352	1	REPAIR KIT, Nylon
45	1709354	1	GUARD, Outer
46	1709358	1	YOKE
47	1709348	1	JOINT & TUBE ASSEMBLY, w/guard (Incl. Ref. Nos. 42-46)
48	1709353	1	DECAL, Warning, Drive Shaft

Footnotes:

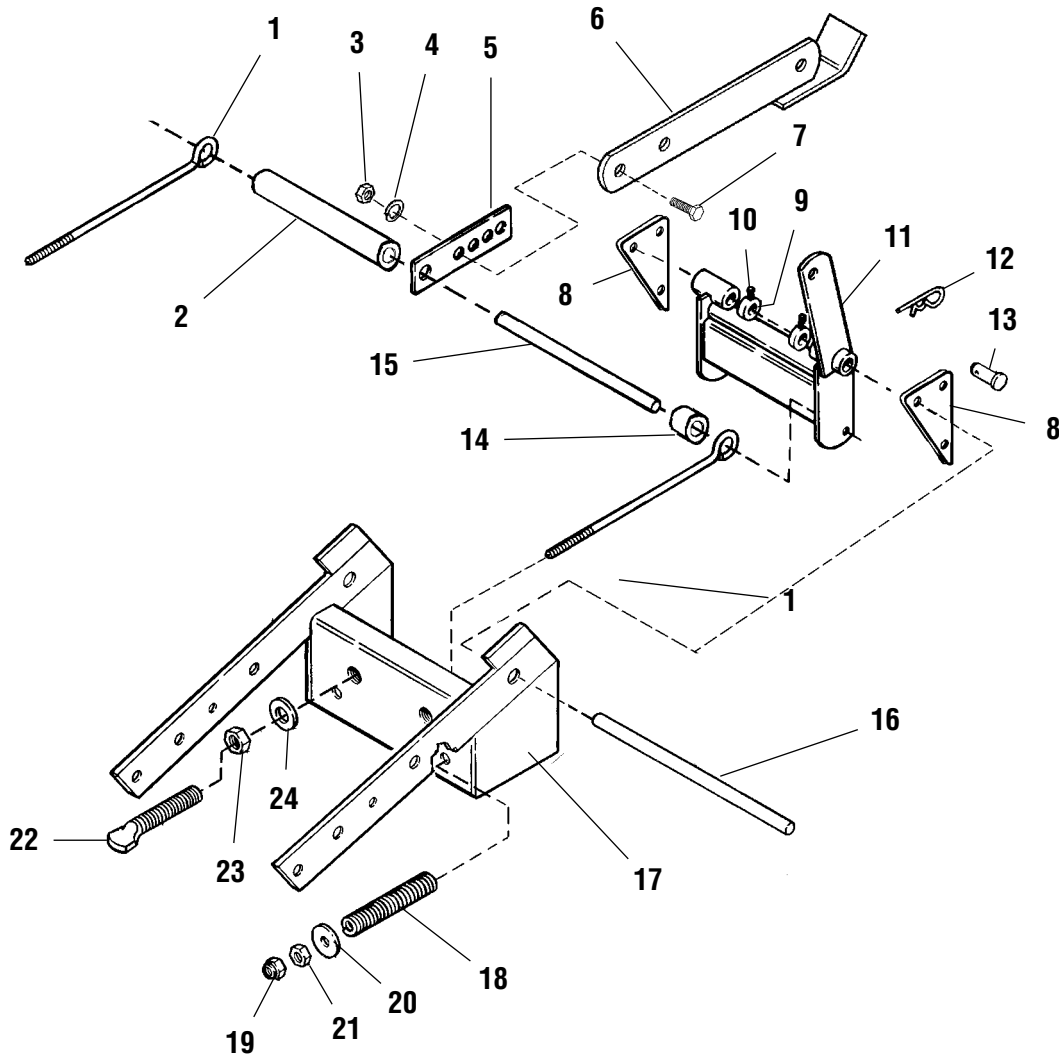
The above parts group applies to the following Mfg. Nos.:

1693761 Single-Stage Snowthrower, 46"

Single-Stage Snowthrower, 46" - Hitch Group

985250

NOTE: Unless noted otherwise,
use the standard hardware torque
specification chart.



The above parts group applies to the following Mfg. Nos.:

1693761 Single-Stage Snowthrower, 46"

Single-Stage Snowthrower, 46" - Hitch Group

REF NO.	PART NO.	QTY.	DESCRIPTION
1	1675523	2	EYEBOLT, 3/8-16
2	1716492	1	SPACER
3	1916951	2	NUT, Hex, 1/2-13
4	1916966	2	LOCKWASHER, 1/2
5	1716926	1	BAR, Lift, Front
6	1716920	1	LIFT BAR ASSEMBLY
7	1921525	2	CAPSCREW, Hex Head, 1/2-13 x 1-3/4
8	1716357	2	ANCHOR, Front
9	8031007	2	SET COLLAR
10	1928721	2	SETSCREW, Square Head, Cup Point, 5/16-18 x 1/2, G8
11	1675502	1	PIVOT ASSEMBLY, Hitch
12	176012	2	CLIP, Safety
13	1960038	2	PIN, Clevis, 5/8 x 2-1/4
14	175647	1	SPACER
15	1716460	1	SHAFT
16	1708999	1	SHAFT, Inner
17	1703635	1	HITCH ASSEMBLY
18	1675524	2	SPRING, Compression
19	1917421	2	NUT, Hex Jam, 3/8-16
20	1960071	2	WASHER, 3/8
21	1916950	2	NUT, Hex, 3/8-16
22	1676959	2	STUD, 3/4-10
23	1913160	2	NUT, Hex, 3/4-10
24	1919332	2	WASHER, Lock, 3/4

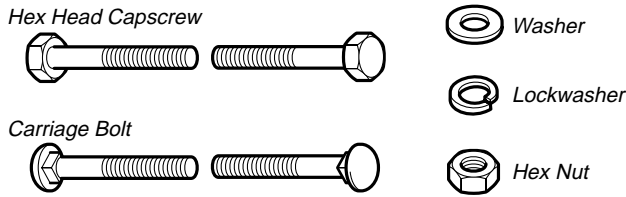
Footnotes:

The above parts group applies to the following Mfg. Nos.:

1693761 Single-Stage Snowthrower, 46"

Hardware Identification & Torque Specifications

Common Hardware Types

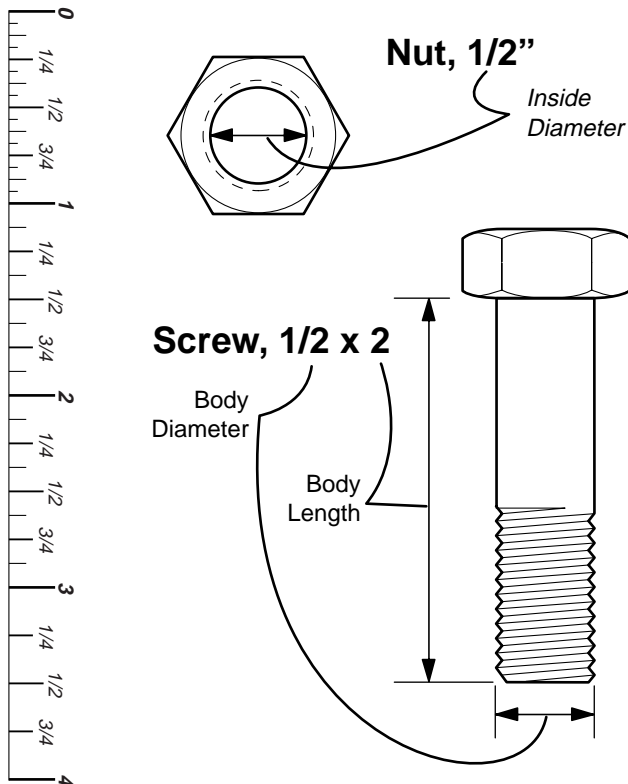


Standard Hardware Sizing

When a washer or nut is identified as **1/2"**, this is the *Nominal size*, meaning the *inside diameter* is 1/2 inch; if a second number is present it represent the *threads per inch*

When bolt or capscrew is identified as **1/2 - 16 x 2"**, this means the *Nominal size*, or *body diameter* is 1/2 inch; the second number represents the *threads per inch* (16 in this example, and the final number is the *body length* of the bolt or screw (in this example 2 inches long).

The guides and ruler furnished below are designed to help you select the appropriate hardware and tools.



Torque Specification Chart

FOR STANDARD MACHINE HARDWARE (Tolerance ± 20%)

Hardware Grade	No Marks		SAE Grade 2		SAE Grade 5		SAE Grade 8	
	in/lbs	Nm.	in/lbs	Nm.	in/lbs	Nm.	in/lbs	Nm.
8-32	19	2.1	30	3.4	41	4.6		
8-36	20	2.3	31	3.5	43	4.9		
10-24	27	3.1	43	4.9	60	6.8		
10-32	31	3.5	49	5.5	68	7.7		
1/4-20	66	7.6	8	10.9	12	16.3		
1/4-28	76	8.6	10	13.6	14	19.0		
5/16-18	11	15.0	17	23.1	25	34.0		
5/16-24	12	16.3	19	25.8	27	34.0		
3/8-16	20	27.2	30	40.8	45	61.2		
3/8-24	23	31.3	35	47.6	50	68.0		
7/16-14	30	40.8	50	68.0	70	95.2		
7/16-20	35	47.6	55	74.8	80	108.8		
1/2-13	50	68.0	75	102.0	110	149.6		
1/2-20	55	74.8	90	122.4	120	163.2		
9/16-12	65	88.4	110	149.6	150	204.0		
9/16-18	75	102.0	120	163.2	170	231.2		
5/8-11	90	122.4	150	204.0	220	299.2		
5/8-18	100	136	180	244.8	240	326.4		
3/4-10	160	217.6	260	353.6	386	525.0		
3/4-16	180	244.8	300	408.0	420	571.2		
7/8-9	140	190.4	400	544.0	600	816.0		
7/8-14	155	210.8	440	598.4	660	897.6		
1-8	220	299.2	580	788.8	900	1,244.0		
1-12	240	326.4	640	870.4	1,000	1,360.0		

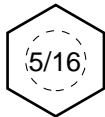
NOTES

- These torque values are to be used for all hardware excluding: locknuts, self-tapping screws, thread forming screws, sheet metal screws and socket head setscrews.
- Recommended seating torque values for locknuts:
 - for prevailing torque locknuts - use 65% of grade 5 torques.
 - for flange whizlock nuts and screws - use 135% of grade 5 torques.
- Unless otherwise noted on assembly drawings, all torque values must meet this specification.

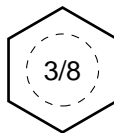
Wrench & Fastener Size Guide



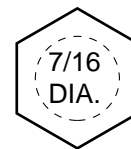
1/4" Bolt or Nut
Wrench—7/16"



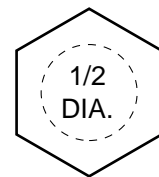
5/16" Bolt or Nut
Wrench—1/2"



3/8" Bolt or Nut
Wrench—9/16"



7/16" Bolt or Nut
Wrench (Bolt)—5/8"
Wrench (Nut)—11/16"



1/2" Bolt or Nut
Wrench—3/4"