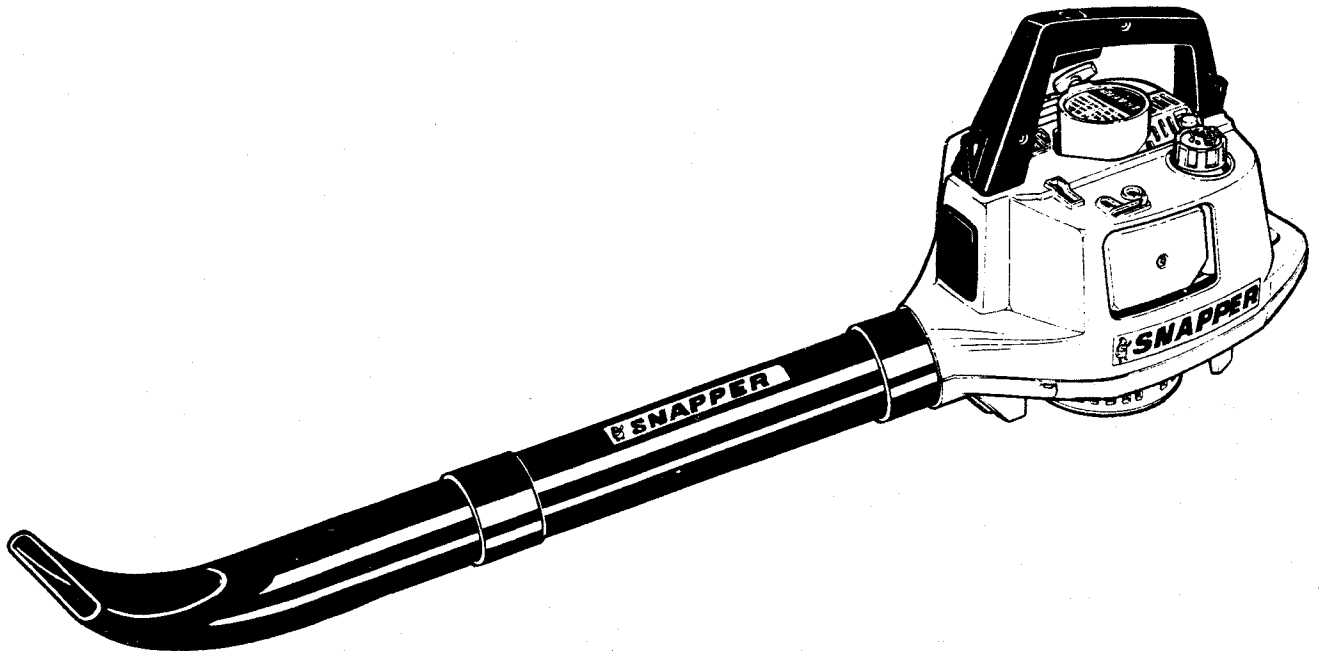


# Parts Manual for **SNAPPER**®

## MODEL 2100HHB HAND HELD BLOWER



IT IS THE POLICY OF SNAPPER POWER EQUIPMENT TO IMPROVE ITS PRODUCTS WHENEVER IT IS POSSIBLE AND PRACTICAL TO DO SO. WE RESERVE THE RIGHT TO MAKE CHANGES OR ADD IMPROVEMENTS AT ANY TIME WITHOUT INCURRING ANY OBLIGATION TO MAKE SUCH CHANGES ON PRODUCTS MANUFACTURED PREVIOUSLY.

**SNAPPER POWER EQUIPMENT**

McDonough, GA • 30253

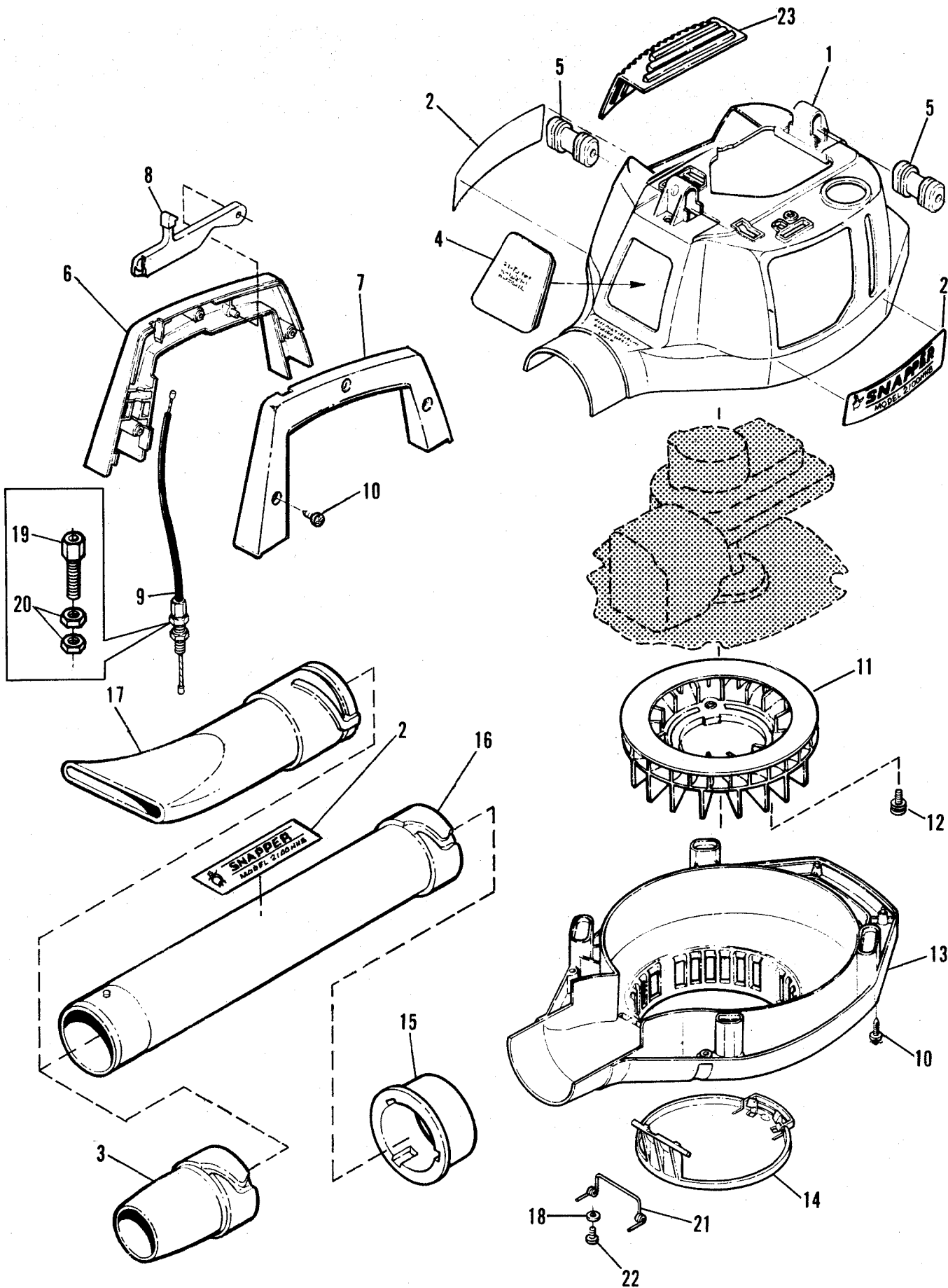


(Prod. # 1-5962)

(IR 8/88)

PARTS MANUAL #06316

MODEL 2100HHB HOUSING COMPONENTS

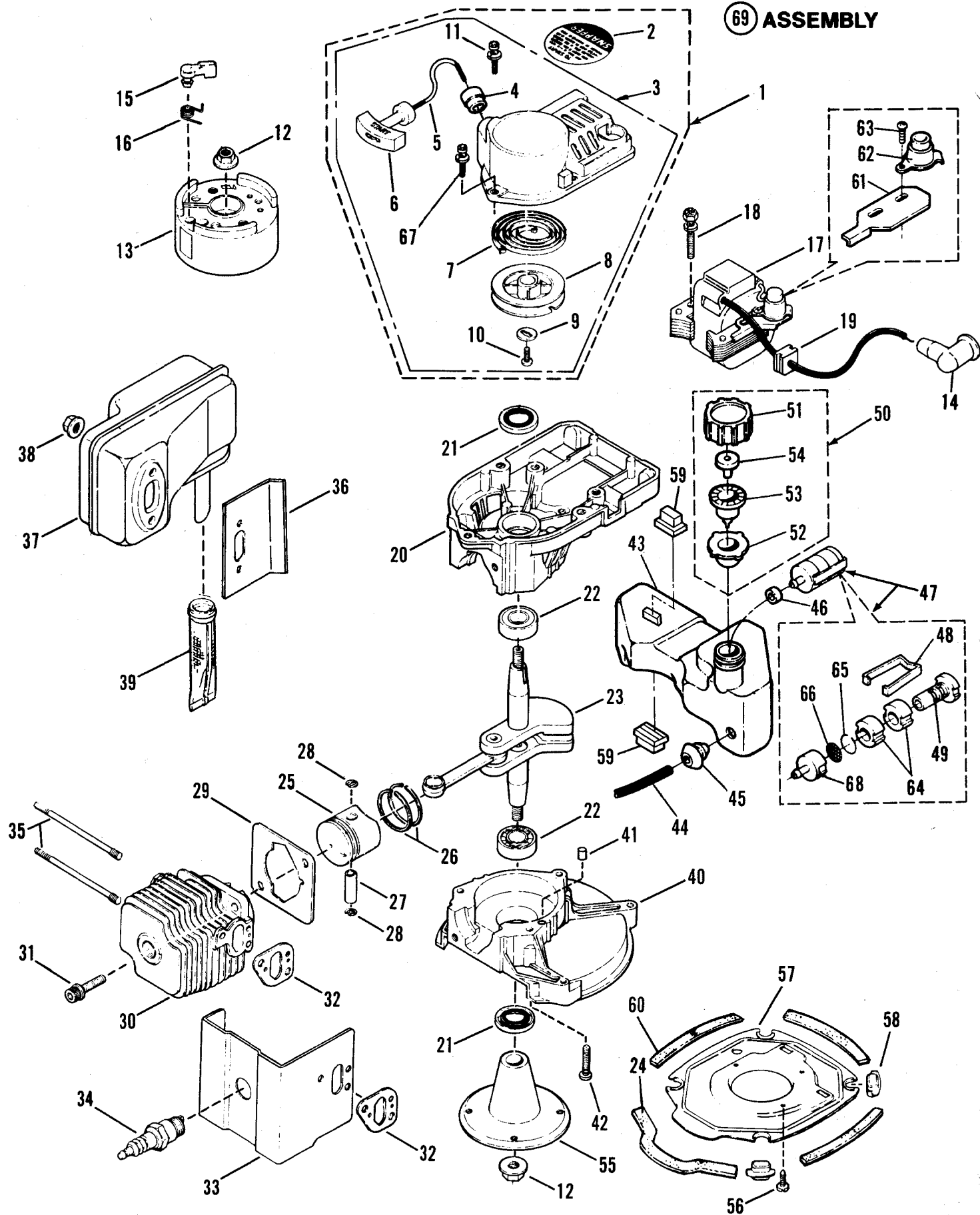


# MODEL 2100HHB HOUSING COMPONENTS

ITEM	PART NO.	DESCRIPTION
1	4-4521	HOUSING, Blower, Upper
2	4-4538	DECAL, Snapper (3)
3	4-4537	NOZZLE, Tapered
4	4-4523	COVER, Spark Plug
5	4-4524	GROMMET, Handle Mounting (2)
6	4-4525	HANDLE, Right Side
7	4-4526	HANDLE, Left Side
8	4-4527	TRIGGER, Throttle
9	4-4528	CABLE, Throttle
10	4-4529	SCREW, M5x20mm Pan Head (9)
11	4-4530	FAN-WHEEL
12	4-4517	SCREW, M5x12mm Pan Head (3)
13	4-4532	HOUSING, Blower, Lower
14	4-4533	COVER, Lower
15	4-4534	SLEEVE, Tube
16	4-4535	TUBE
17	4-4536	NOZZLE, Flare
18	4-4565	WASHER, M3
19	4-4551	SCREW, Adjust
20	4-4552	NUT, Hex, M6 x1.0 (2)
21	4-4503	SPRING
22	4-4564	SCREW, M3
23	4-4579	COVER, Muffler

# MODEL 2100HHB ENGINE COMPONENTS

69 ASSEMBLY

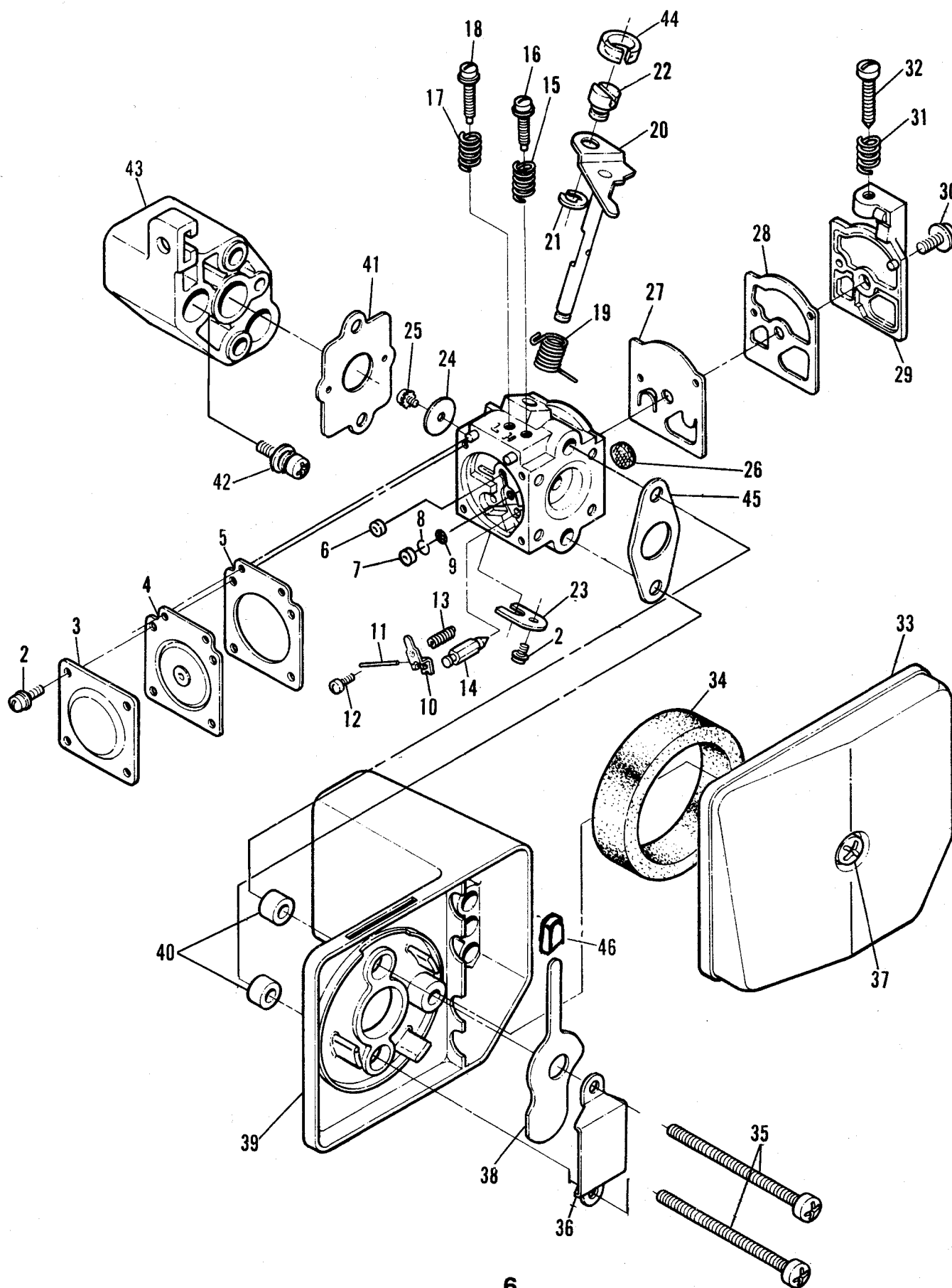


# MODEL 2100HHB ENGINE COMPONENTS

ITEM	PART NO.	DESCRIPTION
1	5-1737	RECOIL STARTER ASS'Y W/LABEL(Includes items 2&3)
2	4-4500	LABEL,Starting instruction
3	4-4502	RECOIL STARTER ASS'Y(Includes items 4thru10)
4	4-4561	ROPE GUIDE
5	4-4377	ROPE, Starter
6	4-4115	KNOB, Starter
7	4-4376	SPRING, Recoil
8	4-4375	REEL
9	4-4374	WASHER
10	4-4373	SCREW
11	4-4328	SCREW & WASHER(2)
12	4-4359	NUT, Conical (2)
13	4-4560	ROTOR
14	4-4031	CAP, Plug
15	4-4558	PAWL, Starter
16	4-4559	SPRING, Pawl
17	4-4504	COIL,Ignition(Includes items 61 & 63)
18	4-4306	SCREW (2)
19	4-4557	GROMMET
20	4-4310	CASE, Starter
21	4-4013	SEAL, Oil (2)
22	4-4309	BEARING, Ball (2)
23	4-4553	CRANKSHAFT ASS'Y.
24	4-4531	SEAL, Engine Plate, Front
25	4-4405	PISTON
26	4-4404	RING, Piston (2)
27	4-4406	PIN, Piston
28	4-4319	CLIP, Piston Pin (2)
29	4-4317	GASKET, Cylinder
30	4-4403	CYLINDER
31	4-4316	BOLT, Flange (2)
32	4-4327	GASKET, Carburetor Mounting (2)
33	4-4506	SHIELD, Carburetor
34	---	SPARK PLUG (Champion CJ6)
35	4-4507	STUD, Muffler (2)
36	4-4508	SHIELD, Muffler
37	4-4510	MUFFLER
38	4-4509	NUT, Muffler Stud (2)
39	4-4511	SPARK ARRESTOR
40	4-4512	CASE, Drive
41	4-4307	PIN, Dowel (2)
42	4-4308	SCREW, M5x25mm (3)
43	4-4513	FUEL TANK ASS'Y. (Includes Items 44 thru 54)
44	4-4514	LINE, Fuel
45	4-4515	GROMMET, Fuel Line
46	4-4575	CLIP, Fuel Line
47	4-4569	FILTER ASS'Y, Fuel (Includes items 48, 49, 64, 65, 66, 68)
48	4-4570	CLIP
49	4-4571	SLEEVE, Gov
50	4-4563	CAP ASS'Y, (Includes Items 51 thru 54)
51	4-4562	CAP, Fuel
52	4-4135	GASKET
53	4-4134	HOLDER
54	4-4133	VALVE, Breather
55	4-4516	MOUNT, Fan-Wheel
56	4-4517	SCREW, M5x12mm PHCR (3)
57	4-4518	MOUNTING PLATE, Engine
58	4-4519	DAMPER,Eng.Mtg.Plate(4)
59	4-4382	PAD, Fuel Tank(4)
60	4-4520	SEAL, Eng. Mtg. Plate (3)
61	4-4556	BRACKET
62	4-4555	SWITCH, Stop
63	4-4554	SCREW
64	4-4572	FELT (2)
65	4-4573	RING
66	4-4574	SCREEN
67	4-4576	SCREW
68	4-4577	BODY, Fuel Filter
69	4-4501	ENGINE. COMPLETE(Includes items 2 thru 42 & 61, 62, 63)

# MODEL 2100HHB - CARBURETOR & AIR FILTER

## ① ASSEMBLY



# MODEL 2100HHB - CARBURETOR & AIR FILTER

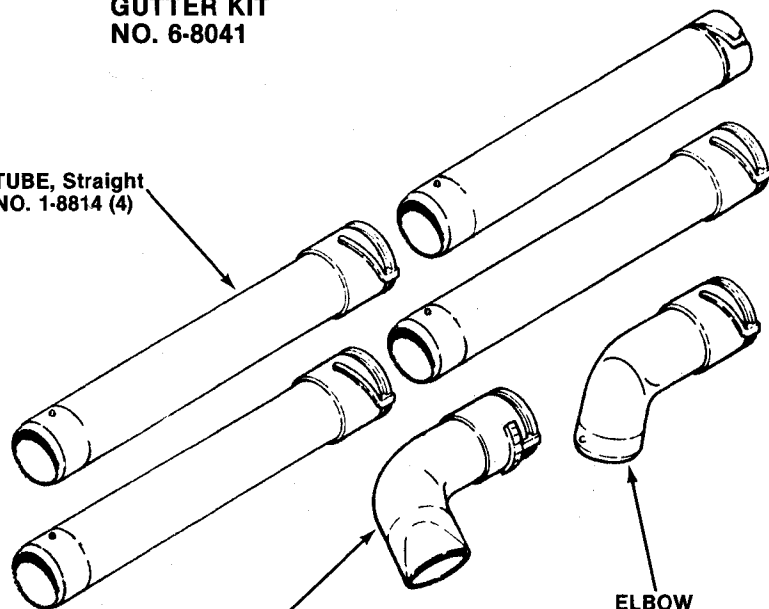
ITEM	PART NO.	DESCRIPTION
	1	CARBURETOR ASS'Y. (Includes Items 2 thru 32) Carb. No.
	2	SCREW, Cover (5)
	3	COVER, Diaphragm
* ● ■	4	DIAPHRAGM, Metering
* ● ■	5	GASKET, Diaphragm
* ●	6	PLUG, Welch
* ●	7	PLUG, Welch
* ●	8	RING, Screen Retainer
* ●	9	SCREEN, Check Valve
* ●	10	LEVER, Metering
* ●	11	PIN, Lever
* ●	12	SCREW, Lever Pin
* ●	13	SPRING, Lever
* ●	14	VALVE, Inlet Needle
* ●	15	SPRING, High Speed Needle
* ●	16	NEEDLE, High Speed
* ●	17	SPRING, Idle Needle
* ●	18	NEEDLE, Idle
	19	SPRING, Throttle Return
	20	SHAFT, Throttle
	21	CLIP
	22	SWIVEL
	23	CLIP, Throttle Shaft
	24	VALVE, Throttle
	25	SCREW, Throttle
* ●	26	SCREEN, Inlet
* ● ■	27	DIAPHRAGM, Fuel Pump
* ● ■	28	GASKET, Fuel Pump
□	29	COVER, Fuel Pump
	30	SCREW, Pump Cover
□	31	SPRING, Idle Screw
□	32	SCREW, Idle Adjusting
	33	COVER, Air Cleaner
	34	FILTER, Air Cleaner
	35	SCREW, Carburetor Mounting (2)
	36	PLATE
	37	SCREW & WASHER
	38	LEVER, Choke
	39	BASE
	40	SLEEVE, Choke Base (2)
	41	GASKET, Carburetor
	42	SCREW, Insulator Mounting
	43	INSULATOR, Carburetor
	44	CLIP
	45	GASKET, Choke Base Mounting
	46	COVER, Choke Lever

- 4-4566 \* REPAIR KIT, Carburetor, Major  
 4-4567 ● REPAIR KIT, Carburetor, Minor  
 4-4568 ■ GASKET, Carburetor/KIT, Diaphragm  
 4-4580 □ Pump Cover KIT

## MODEL 2100HHB ACCESSORIES

### GUTTER KIT NO. 6-8041

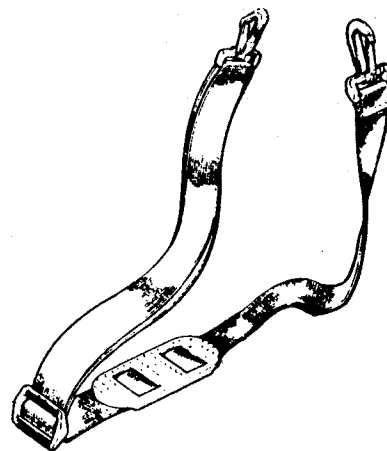
TUBE, Straight  
NO. 1-8814 (4)



OUTLET  
NO. 1-8812

ELBOW  
NO. 1-8813

### SHOULDER STRAP NO. 6-8109



**SNAPPER POWER EQUIPMENT**  
McDonough, GA • 30253

