

***Simplicity***<sup>®</sup>

**PARTS  
MANUAL  
MODEL 9000  
ATTACHMENTS  
& ACCESSORIES**

48" ROTARY TILLER  
MFG. NO. 1600199  
52" SNOW THROWER  
MFG. NO. 1600225  
57" SICKLE BAR  
MFG. NO. 1600197  
60" ROTARY MOWER  
MFG. NO. 1690074  
DUMP CART  
MFG. NO. 1600236  
60" DOZER BLADE  
MFG. NO. 1600201  
54" CULTIVATOR  
MFG. NO. 1600223  
HITCH ASSEMBLY  
MFG. NO. 1600328  
HOUR METER  
MFG. NO. 1690197  
FRONT HITCH  
MFG. NO. 1600202  
REAR LIGHT  
MFG. NO. 1690042  
HYDRAULIC CYLINDER  
MFG. NO. 1600207

**Attention Dealers:**

This manual is one of the new style parts manuals which Simplicity is issuing. We trust you will find that this manual contains more information than previously offered in parts manuals, including important facts which will help you with repair work and parts ordering.

The new loose-leaf format allows for easier updating of specific sections should it be necessary and, in general, makes the manual easier to work with in day to day use.

For quick, accurate reference when making warranty claims, group numbers are now given with each parts section. Also note that serial numbers of units are now listed to locate any difference in parts which may occur in later models. Be aware of these unit serial numbers when ordering parts.

Standard torques appear in a chart at the end of the manual, while important individual torques are given on specific parts drawings. These provide easy reference notes for repair and troubleshooting.

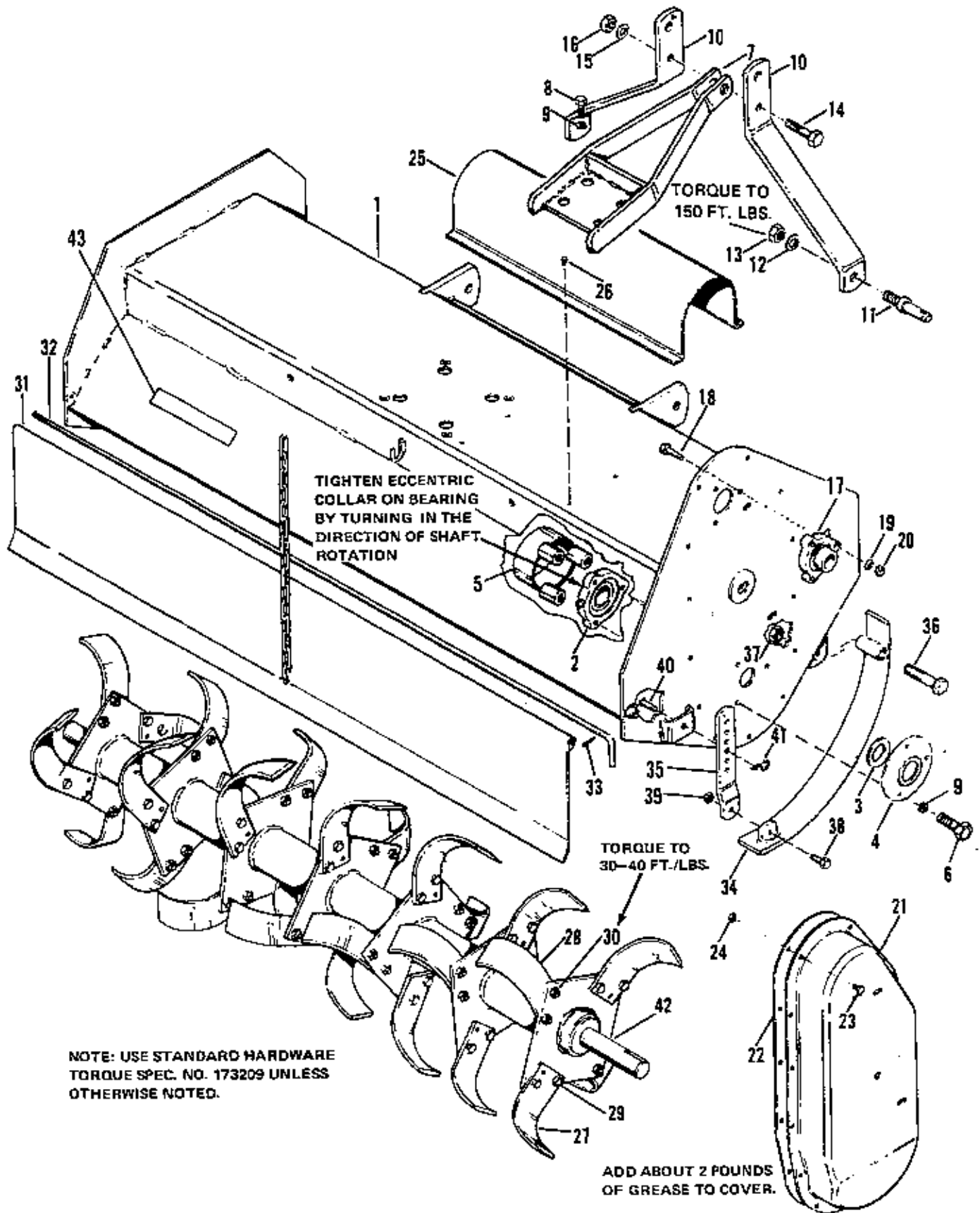
**CRITICAL** and **MAJOR** notations point out important facts or instructions which relate to safety or reliability and machine quality. The **CRITICAL** notation **(C)** pinpoints characteristics which, if not properly followed, can create a safety hazard. The **MAJOR** notation **(M)** marks characteristics which, if not properly followed, may result in operating failure, shortened product life, or greatly reduced quality of the unit.

We are confident that you will find that these new format parts manuals contain more complete information for your benefit, and that they are much easier to use.

Simplicity  
Technical Publications

# Table of Contents

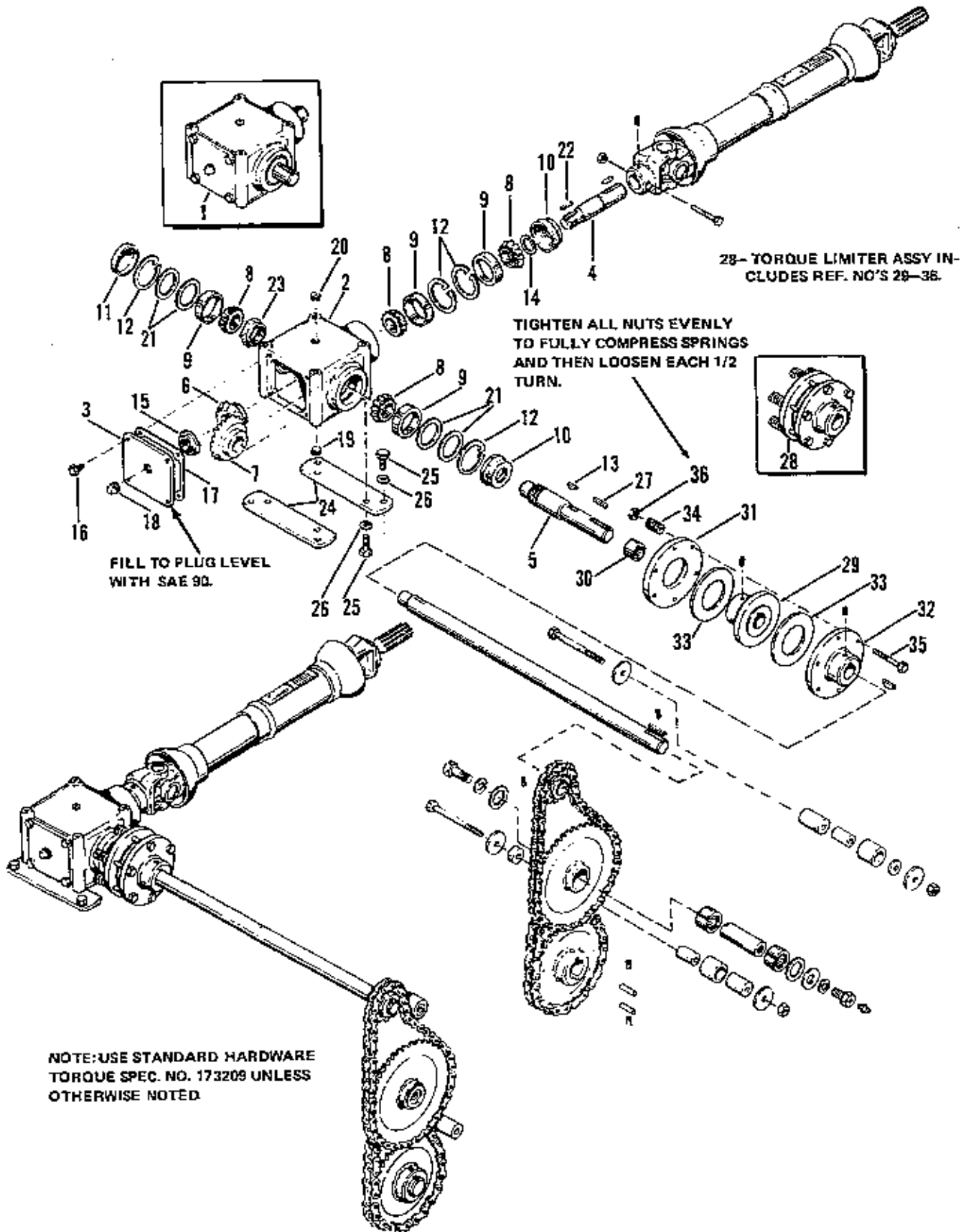
<b>48" ROTARY TILLER</b> .....	<b>2</b>
FRAME & TINES GROUP .....	2
DRIVE GROUP .....	4
UNIVERSAL JOINT TELESCOPING GROUP .....	8
<b>52" SNOW THROWER</b> .....	<b>10</b>
DRIVE GROUP .....	10
HOUSING & DRIVE GROUP .....	12
SPOUT & DEFLECTOR GROUP .....	16
<b>57" SICKLE BAR</b> .....	<b>18</b>
HITCH GROUP .....	18
DRIVE GROUP .....	20
SICKLE GROUP .....	22
<b>60" ROTARY MOWER</b> .....	<b>24</b>
ROCKER ARM & ROLLER GROUP .....	24
ARBOR & BLADE GROUP .....	26
DECK & COVER GROUP .....	28
<b>DUMP CART</b> .....	<b>30</b>
<b>60" DOZER BLADE</b> .....	<b>32</b>
<b>54" CULTIVATOR</b> .....	<b>34</b>
<b>HITCH ASSEMBLY (60" Rotary Mower &amp; 57" Sickle Bar)</b> .....	<b>36</b>
<b>HOUR METER</b> .....	<b>38</b>
<b>FRONT HITCH, DOZER &amp; SNOW BLOWER</b> .....	<b>38</b>
<b>REAR LIGHT</b> .....	<b>40</b>
<b>HYDRAULIC CYLINDER</b> .....	<b>40</b>
<b>STANDARD HARDWARE TORQUE SPECIFICATIONS</b> .....	<b>Inside Back Cover</b>



## 48" Rotary Tiller – Frame &amp; Tines Group

77-2

Ref. No.	Part No.	Qty.	Serial No.	Description
1	172476	1	{00000}-{ }	FRAME ASSY, Main
2	172536	2	{00000}-{ }	BEARING, Flange
3	172458	1	{00000}-{ }	SEAL
4	172507	1	{00000}-{ }	SEAL, Retaining
5	175138	2	{00000}-{ }	GUARD ASSY, Trash
6	922606	6	{00000}-{ }	CAPSCREW, Hex Hd., 3/8-16 x 1-3/4, Gr. 8
7	172943	1	{00000}-{ }	BRACE ASSY
8	921210	4	{00000}-{ }	CAPSCREW, Hex Hd., 3/8-16 x 1
9	916965	10	{00000}-{ }	LOCKWASHER, Spring, 3/8
10	172464	2	{00000}-{ }	MAST
11	172500	2	{00000}-{ }	PIN, Hitch
12	917373	2	{00000}-{ }	LOCKWASHER, Spring, 5/8
13	915726	2	{00000}-{ }	NUT, Hex, Full, 5/8-11
14	927392	1	{00000}-{ }	CAPSCREW, Hex Hd., 7/16-20 x 2-1/2
15	916966	1	{00000}-{ }	LOCKWASHER, Spring, 1/2
16	919423	1	{00000}-{ }	NUT, Hex, Full, 1/2-20
17	172870	1	{00000}-{ }	BEARING, Flange
18	921977	3	{00000}-{ }	CAPSCREW, Hex Hd., 5/16-18x 1-1/2
19	917356	3	{00000}-{ }	LOCKWASHER, Spring, 5/16
20	917372	3	{00000}-{ }	NUT, Hex, 5/16-18
21	172518	1	{00000}-{ }	COVER ASSY
22	172482	1	{00000}-{ }	GASKET
23	919318	13	{00000}-{ }	CAPSCREW, Hex Hd., 5/16-18 x 5/8
24	923362	13	{00000}-{ }	NUT, Hex, Lock, 5/16-18
25	172659	1	{00000}-{ }	GUARD
26	927428	6	{00000}-{ }	SCREW, Hex, Wshr.Hd., Taprite, 1/4-20 x 3/8
27	172511	14	{00000}-{ }	TINE BLADE, R.H.
28	172512	14	{00000}-{ }	TINE BLADE, L.H.
29	925204	56	{00000}-{ }	CAPSCREW, Hex Hd., 3/8-16 x 1
30	926933	56	{00000}-{ }	NUT, Hex, Lock, 3/8-16
31	173436	1	{00000}-{ }	DEFLECTOR ASSY
32	172818	1	{00000}-{ }	ROD, Deflector
33	918448	1	{00000}-{ }	PIN, Cotter, 3/32 x 1
34	172675	2	{00000}-{ }	SKID ASSY
35	172879	2	{00000}-{ }	BRACKET, Adj.
36	922118	2	{00000}-{ }	CAPSCREW, Hex Hd., 5/8-11 x 3
37	923363	2	{00000}-{ }	NUT, Hex, Full Lock, 5/8-11
38	907731	2	{00000}-{ }	CAPSCREW, Hex Hd., 3/8-16 x 1
39	923428	4	{00000}-{ }	NUT, Hex, Full Lock, 3/8-16
40	923087	2	{00000}-{ }	PIN, Yoke, 3/8
41	918196	2	{00000}-{ }	PIN, Quick, 1 x 7/8
42	172771	1	{00000}-{ }	ROTOR ASSY
43	103031	1	{00000}-{ }	DECAL, Safety



28- TORQUE LIMITER ASSY INCLUDES REF. NO'S 28-36.

TIGHTEN ALL NUTS EVENLY TO FULLY COMPRESS SPRINGS AND THEN LOOSEN EACH 1/2 TURN.

FILL TO PLUG LEVEL WITH SAE 90.

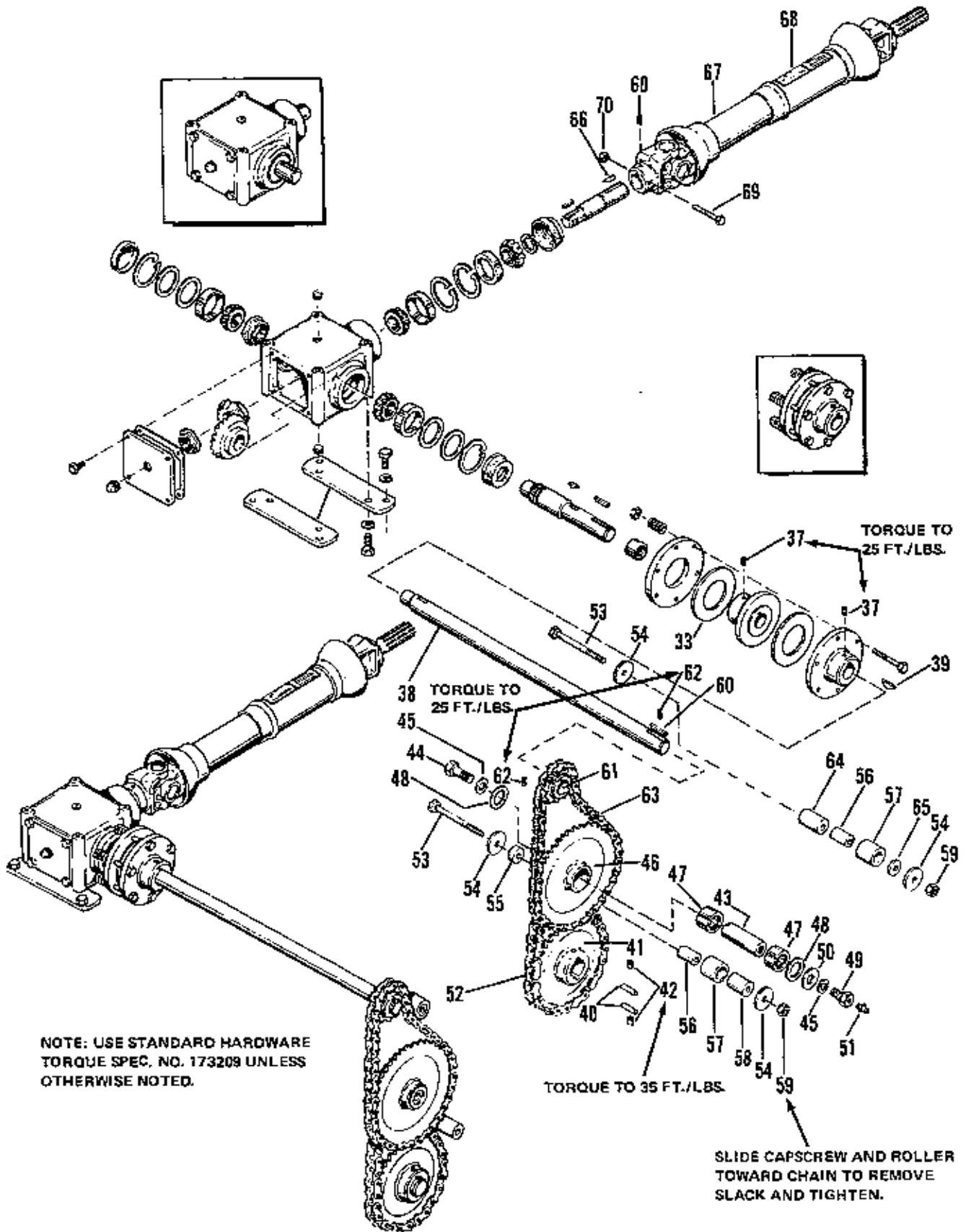
NOTE: USE STANDARD HARDWARE TORQUE SPEC. NO. 173209 UNLESS OTHERWISE NOTED.

**48" Rotary Tiller – Drive Group**

77-2

Ref. No.	Part No.	Qty.	Serial No.	Description
1	172534	1	{00000}-{ }	BOX, Gear
2	173586	1	{00000}-{ }	HOUSING
3	173587	1	{00000}-{ }	COVER
4	173588	1	{00000}-{ }	SHAFT, Input
5	173589	1	{00000}-{ }	SHAFT, Output
6	173590	1	{00000}-{ }	GEAR, 16 T
7	173591	1	{00000}-{ }	GEAR, 24 T
8	170835	4	{00000}-{ }	CONE, Bearing
9	170836	4	{00000}-{ }	CUP, Bearing
10	173592	2	{00000}-{ }	SEAL
11	173593	1	{00000}-{ }	CAP
12	927700	4	{00000}-{ }	RING, Retaining, 2" Internal
13	905845	1	{00000}-{ }	KEY, Woodruff, 1/4 x 7/8
14	105194	1	{00000}-{ }	RING, Retaining
15	173595	1	{00000}-{ }	NUT, Stake
16	917397	4	{00000}-{ }	CAPSCREW, Hex Hd., 5/16-18 x 3/4
17	173596	1	{00000}-{ }	GASKET
18	901651	1	{00000}-{ }	PIPE, Plug, Sq. Hd., Solid, 1/8
19	930674	1	{00000}-{ }	PIPE, Plug, Cntrsk, Sq. Hd., 3/8
20	173597	1	{00000}-{ }	PLUG, Vent
21	173598	4	{00000}-{ }	SHIM
22	173599	1	{00000}-{ }	KEY
23	173600	1	{00000}-{ }	NUT, Stake
24	172439	2	{00000}-{ }	PLATE
25	921210	8	{00000}-{ }	CAPSCREW, Hex Hd., 3/8-16 x 1
26	916965	8	{00000}-{ }	LOCKWASHER, Spring, 3/8
27	177304	1	{00000}-{ }	KEY
28	173412	1	{00000}-{ }	LIMITER ASSY, Torque, (Includes Ref. No's 29-36)
29	173404	1	{00000}-{ }	HUB ASSY, Clutch
30	158353	1	{00000}-{ }	BUSHING
31	173327	1	{00000}-{ }	PLATE, Clutch
32	173328	1	{00000}-{ }	FLANGE, Clutch
33	173329	2	{00000}-{ }	DISK, Clutch
34	173575	6	{00000}-{ }	SPRING
35	919355	6	{00000}-{ }	CAPSCREW, Hex Hd., 5/16-18 x 2-1/2
36	923362	6	{00000}-{ }	NUT, Hex, Lock, 5/16-18

NOTE: PARTS REF. NO. 37-70 CONTINUED  
ON THE FOLLOWING PAGE.



NOTE: USE STANDARD HARDWARE TORQUE SPEC. NO. 173209 UNLESS OTHERWISE NOTED.

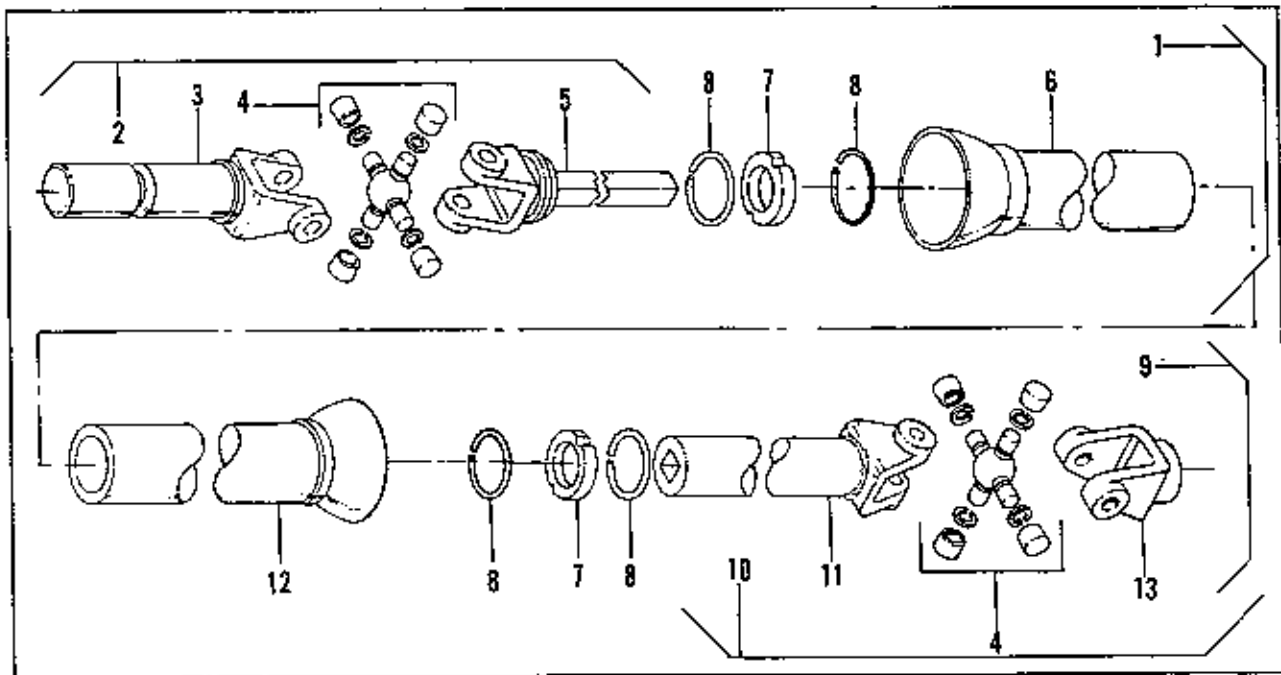


**48" Rotary Tiller – Drive Group**

77-2

Ref. No.	Part No.	Qty.	Serial No.	Description
37	928721	2	{00000}-{ }	SCREW, Set, Sq. Hd., Cup Pt., 5/16-18 x 1/2, Gr. 8
38	173330	1	{00000}-{ }	SHAFT
39	151040	1	{00000}-{ }	KEY, Hi-Pro
40	172669	3	{00000}-{ }	KEY
41	172777	1	{00000}-{ }	SPROCKET ASSY
42	930536	2	{00000}-{ }	SCREW, Set, Sq. Hd., Cup pt., 3/8-16 x 3/4, Gr. 8
43	172456	1	{00000}-{ }	SPACER
44	925662	1	{00000}-{ }	CAPSCREW, Hex Hd., 1/2-20 x 1-1/4
45	916966	2	{00000}-{ }	LOCKWASHER, Spring, 1/2
46	172774	1	{00000}-{ }	SPROCKET ASSY
47	105195	2	{00000}-{ }	BEARING, Pulley
48	8281014	2	{00000}-{ }	WASHER
49	105132	1	{00000}-{ }	BOLT, Side, R.H.
50	918431	1	{00000}-{ }	WASHER, Plain, 1/2
51	912808	1	{00000}-{ }	FITTING, Lube, 1/4-28
52	172497	1	{00000}-{ }	CHAIN, Roller
53	922648	2	{00000}-{ }	CAPSCREW, Hex Hd., 3/8-16 x 4
54	8161199	4	{00000}-{ }	WASHER
55	172454	1	{00000}-{ }	SPACER
56	170369	2	{00000}-{ }	SPACER
57	170177	2	{00000}-{ }	ROLLER
58	172453	2	{00000}-{ }	SPACER
59	923428	2	{00000}-{ }	NUT, Hex, Full Lock, 3/8-16
60	928721	1	{00000}-{ }	SCREW, Set, Sq. Hd., Cup Pt., 5/16-18 x 1/2, Gr. 8
61	172772	1	{00000}-{ }	SPROCKET ASSY
62	928709	2	{00000}-{ }	SCREW, Set, Sq. Hd., Cup Pt., 5/16-18 x 3/8, Gr. 8
63	172496	1	{00000}-{ }	CHAIN, Roller
64	172452	1	{00000}-{ }	SPACER
65	157424	1	{00000}-{ }	WASHER
66	172668	1	{00000}-{ }	KEY
67	172670	1	{00000}-{ }	DRIVE ASSY, PTO
68	174005	1	{00000}-{ }	DECAL, PTO
69	921159	1	{00000}-{ }	CAPSCREW, Hex Hd., 1/4-20x 2-1/4
70	923358	1	{00000}-{ }	NUT, Hex, Lock, 1/4-20

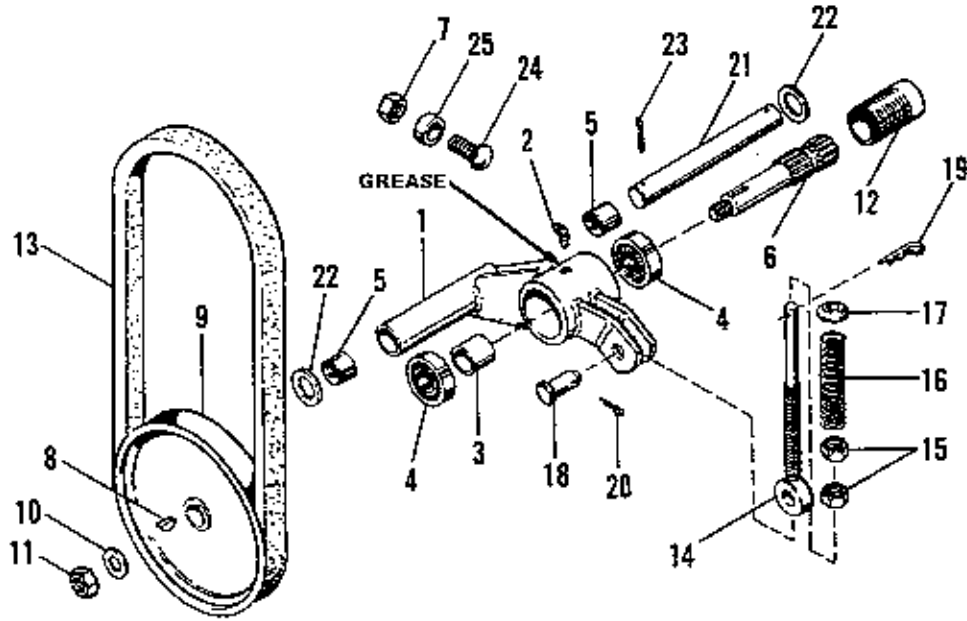
NOTE: PARTS REF. NO. 1-36 FOUND ON  
THE TWO PRECEDING PAGES.



**48" Rotary Tiller – Universal Joint Telescoping**

77-2

Ref. No.	Part No.	Qty.	Serial No.	Description
1	178515	1	{00000}-( )	SHAFT, Spline
2	178516	1	{00000}-( )	JOINT & SHAFT ASSY, w/Guard
3	178517	1	{00000}-( )	YOKE
4	178518	1	{00000}-( )	KIT, Repair
5	178519	1	{00000}-( )	YOKE & SHAFT
6	178520	1	{00000}-( )	GUARD ASSY, Female
7	178521	1	{00000}-( )	BEARING, Nylon
8	178522	1	{00000}-( )	RETAINER, Bearing
9	178523	1	{00000}-( )	JOINT & TUBE ASSY
10	178524	1	{00000}-( )	JOINT & TUBE
11	178525	1	{00000}-( )	YOKE & TUBE
12	178526	1	{00000}-( )	GUARD ASSY, Male
13	178527	1	{00000}-( )	YOKE

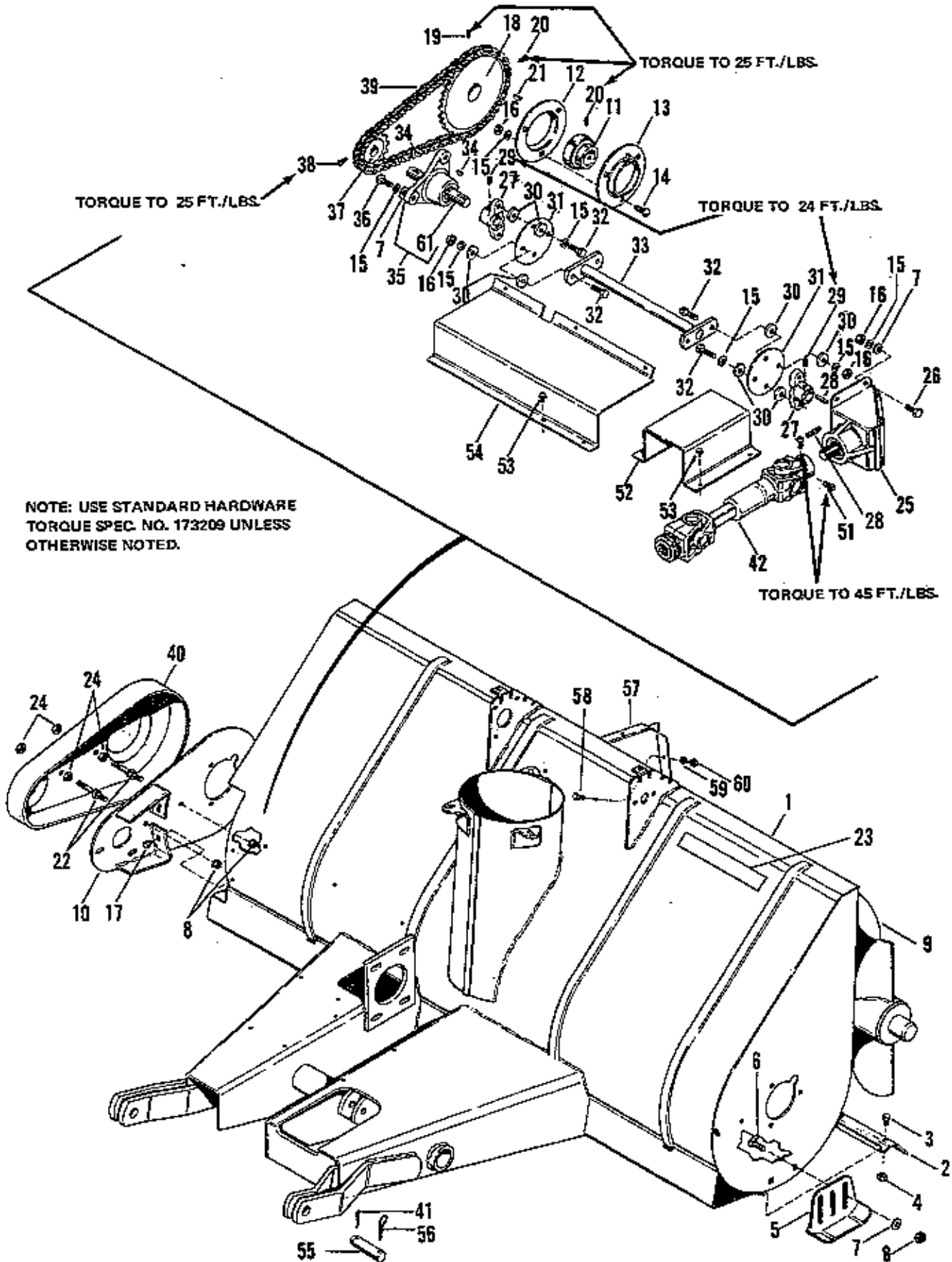


NOTE: USE STANDARD HARDWARE  
TORQUE SPEC. NO. 173209 UNLESS  
OTHERWISE NOTED.

**52" Snow Thrower – Drive Group**

77-2

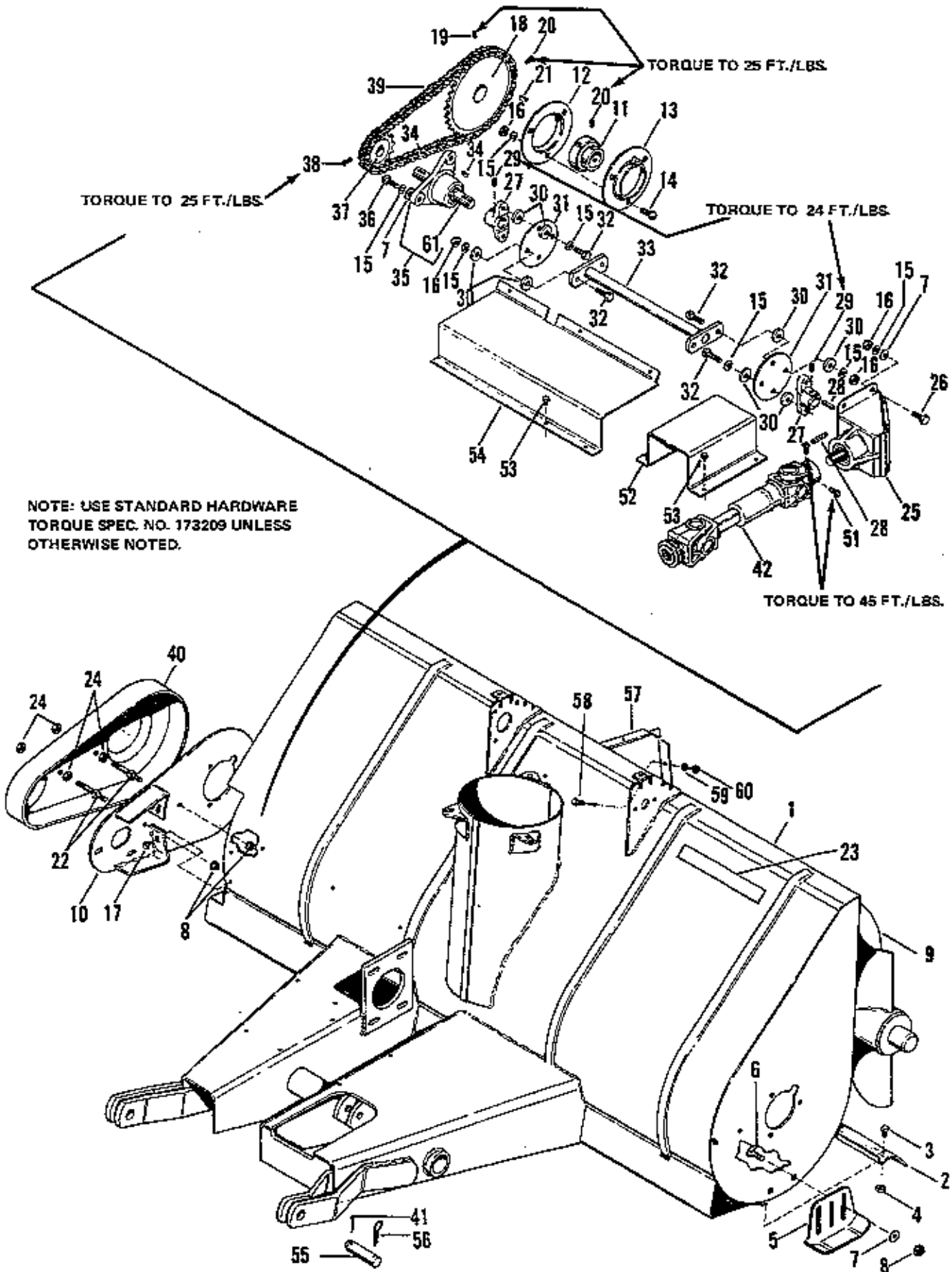
Ref. No.	Part No.	Qty.	Serial No.	Description
1	174419	1	{00000}-{ }	HOUSING ASSY, w/Bearings
2	915019	1	{00000}-{ }	FITTING, Lube, Elbow 90. 1/4-20
3	174415	1	{00000}-{ }	SPACER
4	168078	2	{00000}-{ }	BEARING
5	154289	2	{00000}-{ }	BUSHING
6	174547	1	{00000}-{ }	SHAFT, PTO
7	922007	1	{00000}-{ }	NUT, Hex, Jam, Finished, 7/16-14
8	930670	1	{00000}-{ }	KEY, Hi-Pro, 3/16 x 3/4
9	174371	1	{00000}-{ }	PULLEY
10	154325	1	{00000}-{ }	WASHER
11	924650	1	{00000}-{ }	NUT, Hex, Full Lock, Jam, 1/2-13
12	154327	1	{00000}-{ }	GUARD, Crankshaft, Ext.
13	174486	1	{00000}-{ }	BELT, "V"
14	174373	1	{00000}-{ }	BOLT, Eye
15	913901	2	{00000}-{ }	NUT, Hex, Finished. 7/16-20
16	163103	1	{00000}-{ }	SPRING
17	171007	1	{00000}-{ }	SPACER, Clutch
18	154305	1	{00000}-{ }	PIN, Yolk
19	106787	1	{00000}-{ }	CLIP, Spring
20	918452	1	{00000}-{ }	PIN, Cotter, 1/8 x 1
21	174477	1	{00000}-{ }	PIN, Clutch, Pivot
22	101022	2	{00000}-{ }	WASHER
23	918454	1	{00000}-{ }	PIN, Cotter, 1/8 x 1-1/2
24	924801	1	{00000}-{ }	BOLT, Rd. Hd., Sq. Nk., 7/16-14 x 1
25	175647	1	{00000}-{ }	SPACER



**52" Snow Thrower – Housing & Drive Group**

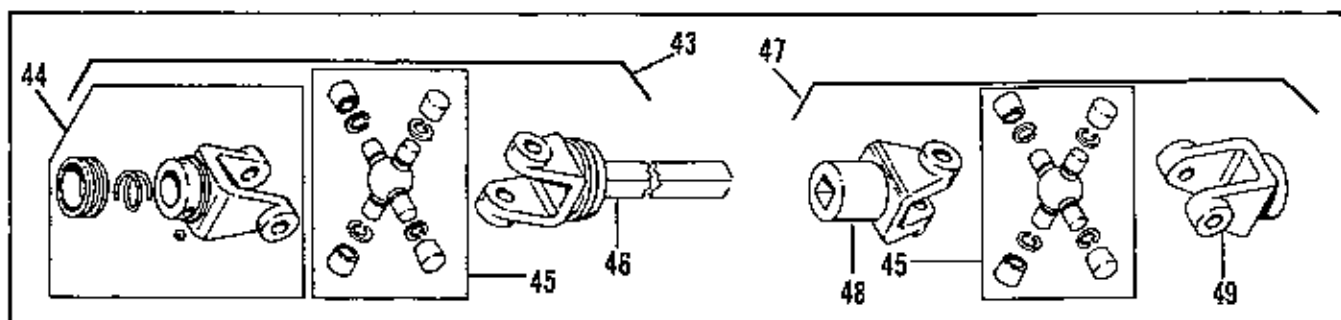
77-2

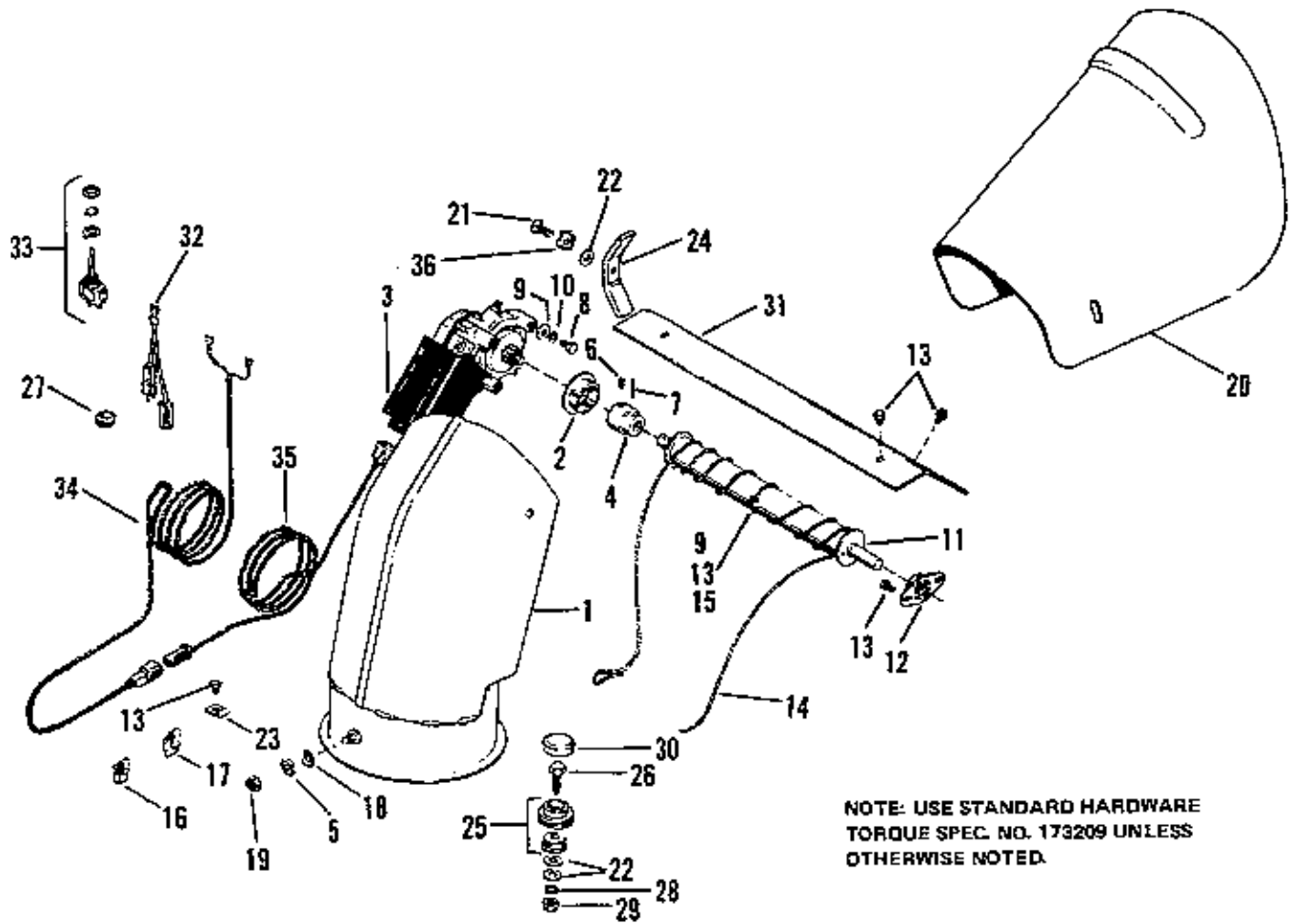
Ref. No.	Part No.	Qty.	Serial No.	Description
1	173732	1	{00000}-{	FRAME & BODY ASSY
2	177220	1	{00000}-{	SCRAPER, Blade
3	922126	12	{00000}-{	CAPSCREW, Hex Hd., 5/16-18 x 3/4, Gr. 8
4	928898	12	{00000}-{	NUT, Hex, Full Lock, Jam, 5/16-18
5	178206	2	{00000}-{	SKID & PLATE ASSY
6	923490	6	{00000}-{	CAPSCREW, Hex Hd., 3/8-16 x 1, Gr. 8
7	917378	13	{00000}-{	WASHER, Plain, 3/8
8	928352	9	{00000}-{	NUT, Flange, Hex, Whizlock, 3/8-16
9	173640	1	{00000}-{	ROTOR ASSY
10	174832	1	{00000}-{	SIDE PLATE & BRACKET ASSY
11	174483	2	{00000}-{	BEARING
12	174484	2	{00000}-{	FLANGE
13	174485	6	{00000}-{	FLANGE
14	923232	6	{00000}-{	BOLT, Rd. Hd., Sq. Nk., 3/8-16 x 1
15	916965	18	{00000}-{	LOCKWASHER, Spring 3/8
16	916950	18	{00000}-{	NUT, Hex, 3/8-16
17	924856	17	{00000}-{	SCREW, Tapping, 5/16-18 x 1/2
18	173915	1	{00000}-{	SPROCKET, 34 T
19	930540	1	{00000}-{	SCREW, Set, Sq.Hd., Cup Pt., 5/16-18 x 5/8, Gr. 8
20	928721	2	{00000}-{	SCREW, Set, Sq.Hd., Cup Pt., 5/16-18 x 1/2, Gr. 8
21	930673	1	{00000}-{	KEY, Hi-Pro, 5/16 x 1
22	105711	2	{00000}-{	STUD
23	161247	1	{00000}-{	DECAL, Safety
24	923428	4	{00000}-{	NUT, Hex, Full Lock, 3/8-16
25	174403	1	{00000}-{	BOX, Gear, 90 Degree
26	921959	4	{00000}-{	CAPSCREW, Hex Hd., 3/8-16 x 1-1/2
27	154198	2	{00000}-{	FLANGE, Drive Shaft
28	157427	2	{00000}-{	KEY
29	924624	2	{00000}-{	SCREW, Set, Hex, Skt., 3/8-24 x 3/8
30	157424	16	{00000}-{	WASHER





Ref. No.	Part No.	Qty.	Serial No.	Description
31	173026	2	{00000}-{ }	COUPLING
32	920415	8	{00000}-{ }	CAPSCREW, Hex Hd., 3/8-16 x 1-1/4
33	174361	1	{00000}-{ }	SHAFT ASSY, Drive
34	930670	2	{00000}-{ }	KEY, Hi-Pro, 3/16 x 3/4
35	174369	1	{00000}-{ }	SHAFT & BEARING ASSY, Flange
36	162053	3	{00000}-{ }	SCREW, Special
37	177099	1	{00000}-{ }	SPROCKET, 14 T
38	928709	1	{00000}-{ }	SCREW, Set, Sq. Hd., Cup Pt., 5/16-18 x 3/8, Gr. 8
39	173247	1	{00000}-{ }	CHAIN, w/Conn. Link
40	173733	1	{00000}-{ }	GUARD, Chain
41	918454	2	{00000}-{ }	PIN, Cotter, 1/8-1-1/2
42	174548	1	{00000}-{ }	SHAFT ASSY, Drive
43	178529	1	{00000}-{ }	JOINT & SHAFT ASSY
44	178530	1	{00000}-{ }	YOKE ASSY
45	178518	1	{00000}-{ }	KIT, Repair
46	178531	1	{00000}-{ }	YOKE & SHAFT
47	178532	1	{00000}-{ }	JOINT & TUBE ASSY
48	178533	1	{00000}-{ }	YOKE & TUBE
49	178534	1	{00000}-{ }	YOKE
50	178535	1	{00000}-{ }	YOKE
51	930588	2	{00000}-{ }	SCREW, Set, Sq. Hd., Cup Pt., 3/8-24 x 5/8, Gr. 8
52	174400	1	{00000}-{ }	COVER
53	927428	9	{00000}-{ }	SCREW, Hex, Wshr. Hd., Taptite 1/4-20 x 3/8
54	174401	1	{00000}-{ }	COVER
55	173741	2	{00000}-{ }	PIN, Hitch
56	106788	4	{00000}-{ }	CLIP, Spring
57	174491	1	{00000}-{ }	DEFLECTOR
48	919318	4	{00000}-{ }	CAPSCREW, Hex Hd., 5/16-18 x 5/8
59	917356	4	{00000}-{ }	LOCKWASHER, Spring, 5/16
60	917372	4	{00000}-{ }	NUT, Hex, 5/16-18
61	123019	1	{00000}-{ }	SHAFT & BEARING



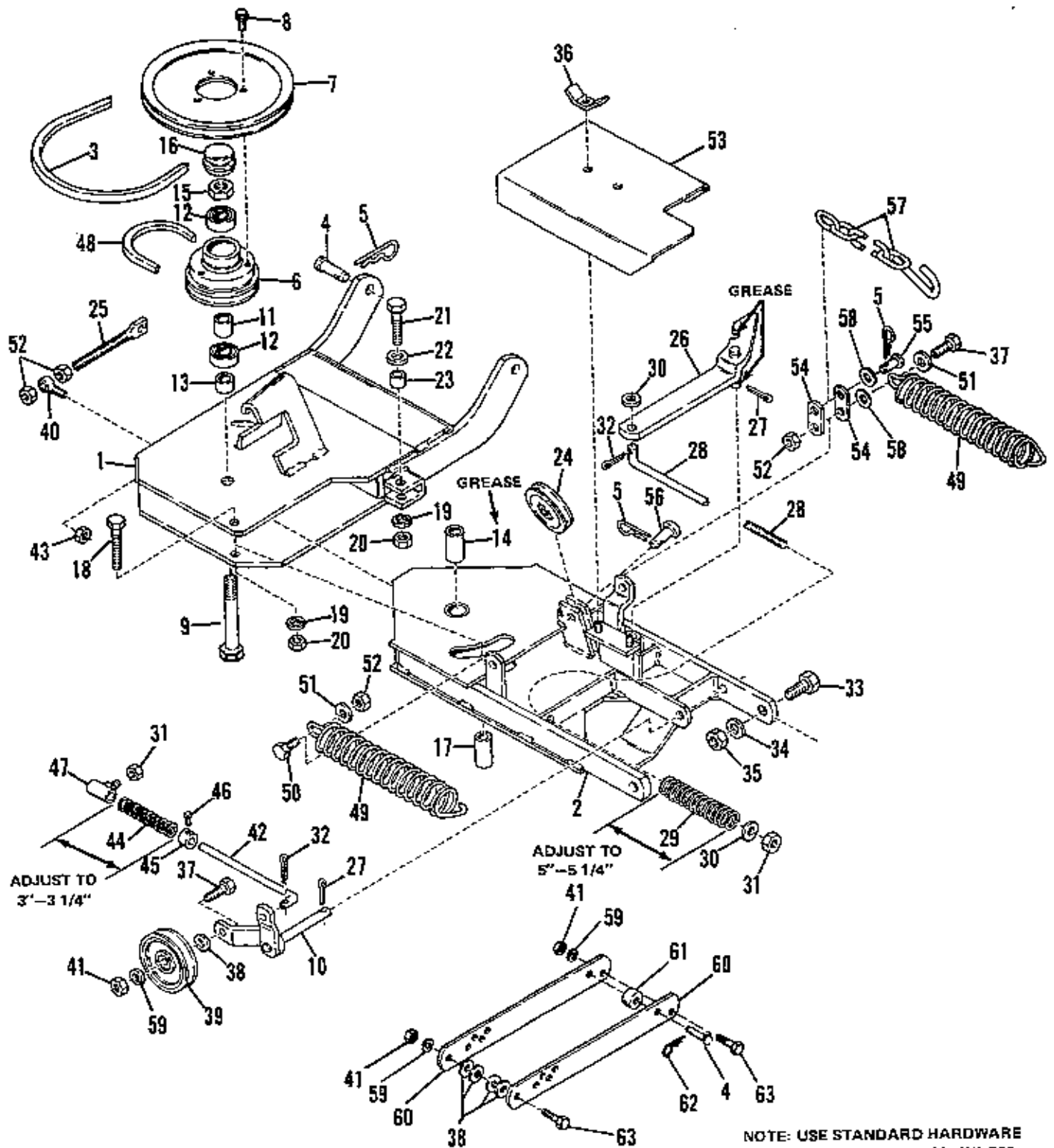


NOTE: USE STANDARD HARDWARE  
TORQUE SPEC. NO. 173209 UNLESS  
OTHERWISE NOTED.

**52" Snow Thrower – Spout & Deflector Group**

77-2

Ref. No.	Part No.	Qty.	Serial No.	Description
1	173305	1	{00000}-{ }	SPOUT ASSY
2	174072	1	{00000}-{ }	BEARING, Flange
3	173346	1	{00000}-{ }	MOTOR, Spout Control
4	174078	1	{00000}-{ }	HUB
5	106785	1	{00000}-{ }	WASHER, Cup
6	930547	2	{00000}-{ }	SCREW, Hex, Stk. Hd., Cup Pt., No. 10-24 x 3/8, Gr. 8
7	921450	1	{00000}-{ }	PIN, Spring, 5/32 x 1
8	916019	3	{00000}-{ }	CAPSCREW, Hex Hd., 1/4-20 x 3/4
9	917377	4	{00000}-{ }	WASHER, Plain, 1/4
10	916984	3	{00000}-{ }	LOCKWASHER, Spring, 1/4
11	174074	1	{00000}-{ }	TUBE ASSY, Spout Control
12	171388	1	{00000}-{ }	BEARING
13	927428	8	{00000}-{ }	SCREW, Hex, Wshr. Hd., Taptite, 1/4-20 x 3/8
14	174470	1	{00000}-{ }	CABLE ASSY
15	171382	1	{00000}-{ }	CLAMP
16	172434	1	{00000}-{ }	CLIP, Cable
17	172436	1	{00000}-{ }	CLIP, Cable
18	171379	1	{00000}-{ }	WASHER, Cup
19	923382	1	{00000}-{ }	NUT, Hex, Lock, 5/16-18
20	173331	1	{00000}-{ }	EXTENSION, Spout
21	922110	2	{00000}-{ }	BOLT, Rd. Hd., Sh.Sq.Nk., 3/8-16 x 3/4
22	917378	8	{00000}-{ }	WASHER, Plain, 3/8
23	106786	3	{00000}-{ }	CLIP, Cable
24	173332	2	{00000}-{ }	NUT, Wing
25	173809	3	{00000}-{ }	PULLEY & BEARING ASSY
26	917400	3	{00000}-{ }	CAPSCREW, Hex Hd., 3/8-16 x 1-1/4
27	172176	1	{00000}-{ }	GROMMET, Rubber
28	916965	3	{00000}-{ }	LOCKWASHER, Spring, 3/8
29	916950	3	{00000}-{ }	NUT, Hex, 3/8-16
30	157530	3	{00000}-{ }	CAP
31	174070	1	{00000}-{ }	COVER, Chute Control
32	174505	1	{00000}-{ }	WIRE, Chute (Control Switch to Ignition Switch)
33	174428	1	{00000}-{ }	SWITCH, Spout Control
34	174504	1	{00000}-{ }	HARNES ASSY, Switch
35	174503	1	{00000}-{ }	HARNES ASSY, Motor
36	928710	2	{00000}-{ }	LOCKWASHER, Pyramidal Type, 3/8

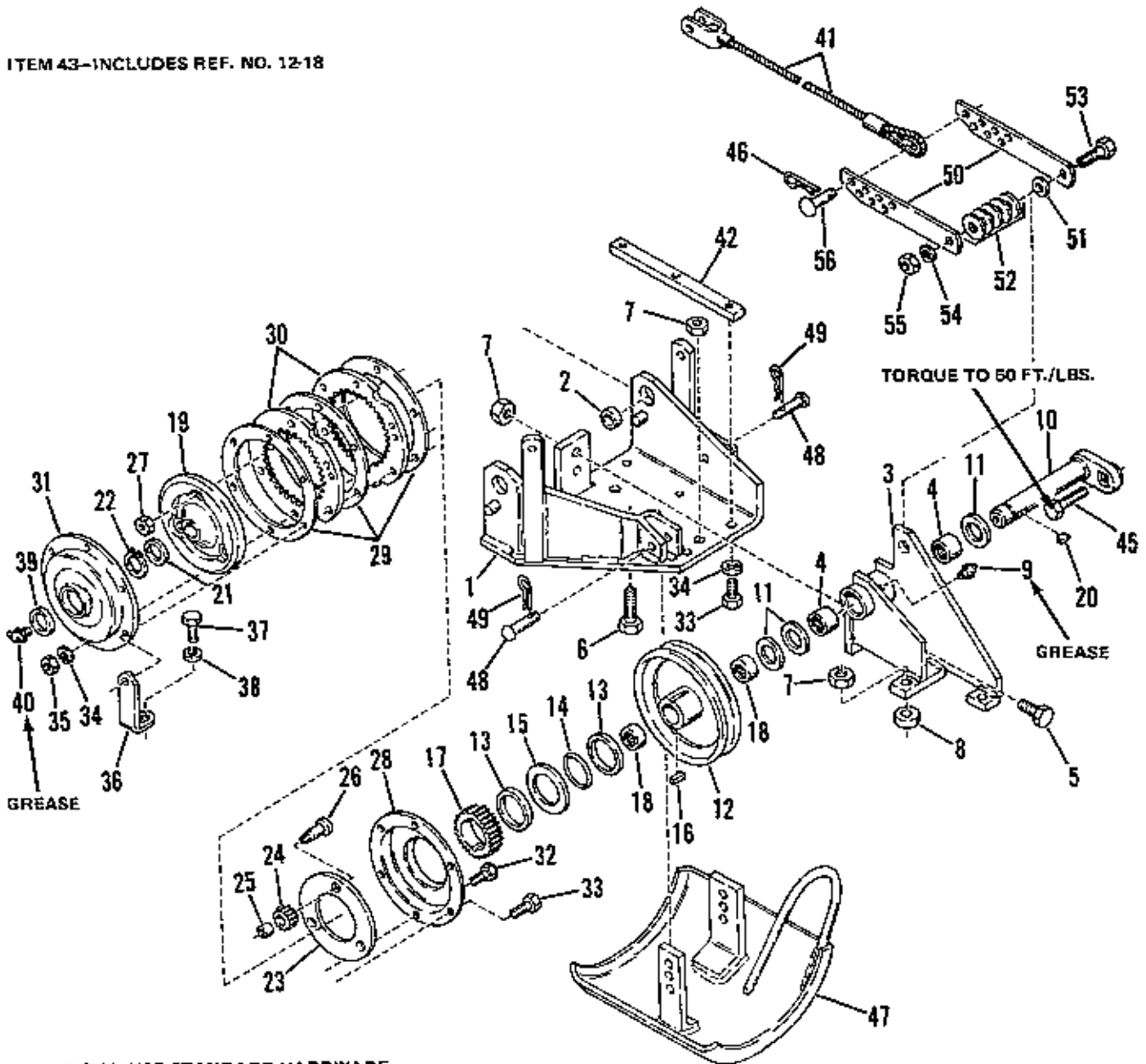


**57" Sickle Bar — Hitch Group**

77-2

Ref. No.	Part No.	Qty.	Serial No.	Description
1	173470	1	{00000}-{ }	SUPPORT ASSY
2	173850	1	{00000}-{ }	FRAME ASSY, R.H.
3	173461	1	{00000}-{ }	BELT, "V"
4	153606	4	{00000}-{ }	PIN
5	106788	3	{00000}-{ }	CLIP, Spring
6	173525	1	{00000}-{ }	PULLEY
7	173607	1	{00000}-{ }	PULLEY
8	930601	3	{00000}-{ }	SCREW, Hex, Wshr Hd., Taprite, 5/16-18 x 5/8
9	174741	1	{00000}-{ }	BOLT ASSY
10	174187	1	{00000}-{ }	LEVER ASSY
11	173101	1	{00000}-{ }	SPACER
12	108202	2	{00000}-{ }	BEARING, Ball
13	173100	1	{00000}-{ }	SPACER
14	173019	1	{00000}-{ }	SPACER
15	926662	1	{00000}-{ }	NUT, Hex, Full Lock, 3/4-10
16	154487	1	{00000}-{ }	CAP. Hub
17	173097	1	{00000}-{ }	SPACER
18	920207	1	{00000}-{ }	CAPSCREW, Hex Hd., 1/2-13 x 3
19	916966	2	{00000}-{ }	LOCKWASHER, Spring, 1/2
20	916951	2	{00000}-{ }	NUT, Hex, 1/2-13
21	919369	1	{00000}-{ }	CAPSCREW, Hex Hd., 1/2-13 x 2-1/4
22	918430	1	{00000}-{ }	WASHER, Plain, 7/16
23	173099	1	{00000}-{ }	SPACER
24	101116	1	{00000}-{ }	PULLEY
25	174743	1	{00000}-{ }	BOLT ASSY
26	173580	1	{00000}-{ }	LATCH ASSY
27	918452	2	{00000}-{ }	PIN, Cotter
28	173657	1	{00000}-{ }	ROD
29	173658	1	{00000}-{ }	SPRING
30	917377	1	{00000}-{ }	WASHER, Plain, 1/4
31	923362	2	{00000}-{ }	NUT, Hex, Lock, 5/16-18
32	922000	2	{00000}-{ }	PIN, Cotter, 3/32 x 5/8
33	924744	2	{00000}-{ }	CAPSCREW, Hex Hd., 5/8-11 x 1-1/2
34	119018	2	{00000}-{ }	WASHER
35	930631	2	{00000}-{ }	NUT, Hex, Full Lock, Jam
36	106229	1	{00000}-{ }	NUT, Wing
37	917400	2	{00000}-{ }	CAPSCREW, Hex Hd., 3/8-16 x 1-1/4
38	917378	7	{00000}-{ }	WASHER, Plain, 3/8
39	106716	1	{00000}-{ }	PULLEY, Idler
40	174211	1	{00000}-{ }	BOLT, Eye
41	916950	2	{00000}-{ }	NUT, Hex, 3/16-18
42	174207	1	{00000}-{ }	ROD
43	930628	1	{00000}-{ }	NUT, Hex, Lock, 3/8-24
44	8191045	1	{00000}-{ }	SPRING
45	8191022	1	{00000}-{ }	COLLAR, Set
46	928804	1	{00000}-{ }	SCREW, Ser. Sq. Hd., Cup Pt., 1/4-20x 3/8, Gr. 8
47	164094	1	{00000}-{ }	GUIDE ASSY, Rod
48	173948	1	{00000}-{ }	BELT, "V"
49	101126	2	{00000}-{ }	SPRING, Tension
50	907731	1	{00000}-{ }	CAPSCREW, Hex Hd., 3/8-16 x 1
51	917642	2	{00000}-{ }	WASHER, Plain, 5/16
52	923428	4	{00000}-{ }	NUT, Hex, Full Lock, 3/8-16
53	174316	1	{00000}-{ }	COVER
54	108199	2	{00000}-{ }	LINK, Mower Lift
55	153058	1	{00000}-{ }	PIN
56	102004	1	{00000}-{ }	PIN, Pivot
57	174209	1	{00000}-{ }	CHAIN ASSY
58	153081	2	{00000}-{ }	SPACER
59	916965	4	{00000}-{ }	LOCKWASHER, 3/8
60	174243	2	{00000}-{ }	BAR, Lift
61	174242	1	{00000}-{ }	SPACER
62	918196	2	{00000}-{ }	PIN, Quick, 1-7/8
63	921969	2	{00000}-{ }	CAPSCREW, Hex Hd., 3/8-16 x 1-1/2

ITEM 43-INCLUDES REF. NO. 12-18

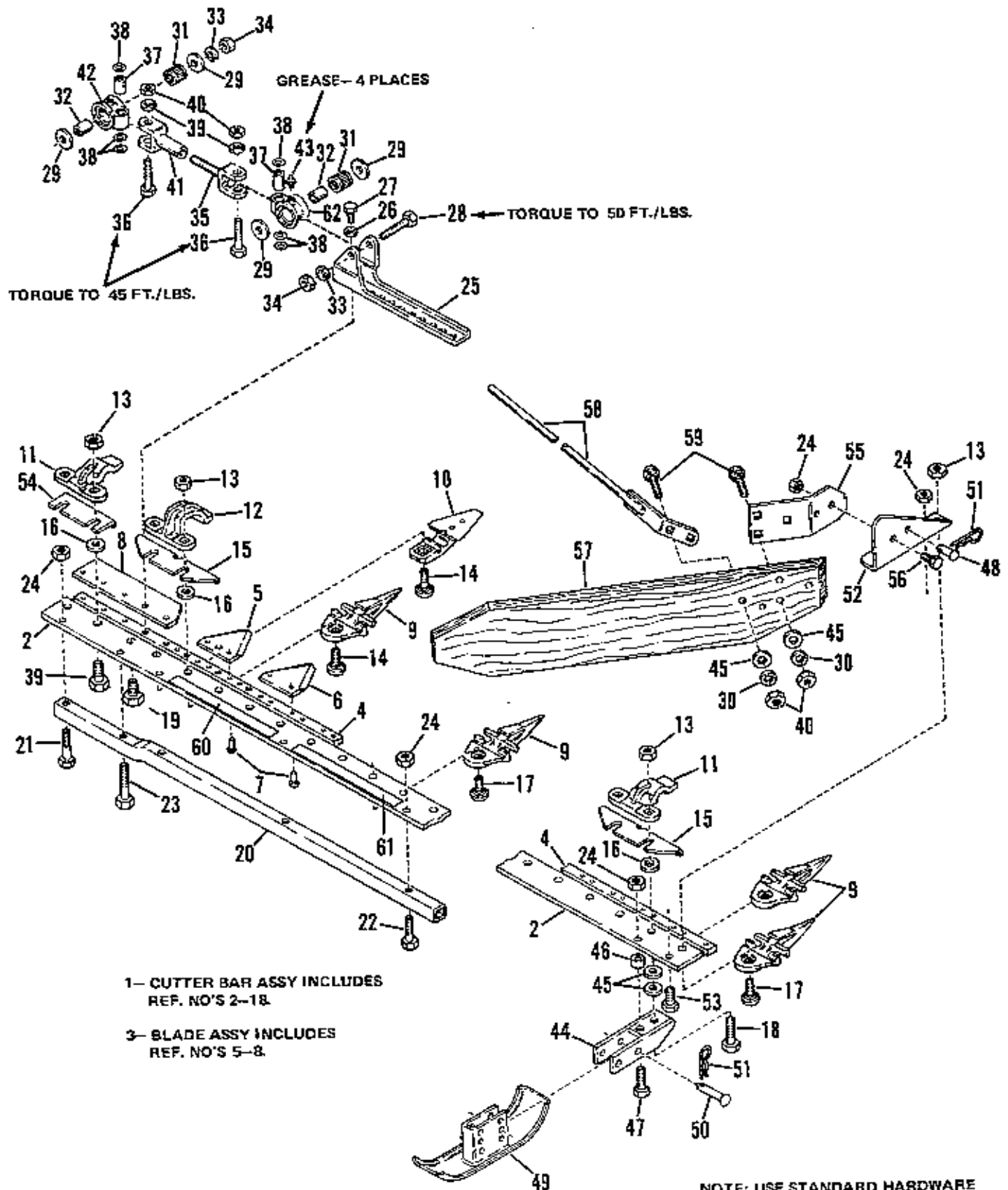


NOTE: USE STANDARD HARDWARE  
TORQUE SPEC. NO. 173209 UNLESS  
OTHERWISE NOTED.

**57" Sickle Bar -- Drive Group**

77-2

Ref. No.	Part No.	Qty.	Serial No.	Description
1	174184	1	{00000}-{ }	PLATE ASSY, Mounting
2	173664	2	{00000}-{ }	SPACER
3	174150	1	{00000}-{ }	HOUSING SUB-ASSY, Bearing
4	173739	2	{00000}-{ }	BEARING
5	920677	2	{00000}-{ }	CAPSCREW, Hex Hd., 7/16-14 x 1-1/4
6	923027	1	{00000}-{ }	CAPSCREW, Hex Hd., 7/16-14 x 1-3/4
7	924058	6	{00000}-{ }	NUT, Hex, Full Lock, 7/16-14
8	174119	1	{00000}-{ }	SPACER
9	912808	1	{00000}-{ }	FITTING, Lube, 1/4-28
10	174193	1	{00000}-{ }	CRANKSHAFT
11	173140	3	{00000}-{ }	WASHER
12	173557	1	{00000}-{ }	HUB & PULLEY
13	161037	2	{00000}-{ }	WASHER
14	157326	1	{00000}-{ }	RING
15	161075	1	{00000}-{ }	SEAL
16	173570	2	{00000}-{ }	KEY
17	173553	1	{00000}-{ }	GEAR, Sun
18	173738	2	{00000}-{ }	BEARING
19	173542	1	{00000}-{ }	HUB, Spider
20	905123	2	{00000}-{ }	KEY, Woodruff, No. 9
21	173668	1	{00000}-{ }	WASHER
22	8051040	1	{00000}-{ }	RING, Retaining
23	157333	1	{00000}-{ }	RING, Bolt
24	157335	3	{00000}-{ }	PINION
25	157337	3	{00000}-{ }	BEARING, Needle
26	157336	3	{00000}-{ }	PIN, Pinion
27	928698	3	{00000}-{ }	NUT, Hex, Full Lock, Jam, 5/16-18
28	161054	1	{00000}-{ }	COVER, L.H.
29	161129	3	{00000}-{ }	GASKET
30	157382	2	{00000}-{ }	GEAR, Ring
31	173550	1	{00000}-{ }	COVER
32	921332	5	{00000}-{ }	CAPSCREW, Hex Hd., 5/16-18 x 3/4
33	923325	4	{00000}-{ }	CAPSCREW, Hex Hd., 5/16-18 x 7/8
34	917356	10	{00000}-{ }	LOCKWASHER, Spring, 5/18
35	917372	7	{00000}-{ }	NUT, Hex, 5/16-18
36	174517	1	{00000}-{ }	BRACKET
37	921333	1	{00000}-{ }	CAPSCREW, Hex Hd., 5/16-18 x 1
38	917377	1	{00000}-{ }	WASHER, Plain, 1/4
39	118118	1	{00000}-{ }	SEAL, Oil
40	915019	1	{00000}-{ }	FITTING, Lube, Elbow 90, 1/4-28
41	174235	1	{00000}-{ }	CABLE ASSY
42	173632	1	{00000}-{ }	BAR, Spacer
43	173556	1	{00000}-{ }	PULLEY & HUB ASSY (Incl. Ref. nos. 12-18)
44	173667	1	{00000}-{ }	HOUSING SUB-ASSY, Bearing
45	926109	1	{00000}-{ }	CAPSCREW, Hex Hd., 7/16-14 x 2-1/4
46	108787	1	{00000}-{ }	CLIP, Spring
47	174178	1	{00000}-{ }	SHOE ASSY
48	156305	2	{00000}-{ }	PIN
49	108788	2	{00000}-{ }	CLIP, Spring
50	174238	2	{00000}-{ }	BRACKET
51	121163	1	{00000}-{ }	SPACER, Pinion
52	156089	5	{00000}-{ }	WASHER
53	921969	1	{00000}-{ }	CAPSCREW, Hex Hd., 3/8-16 x 1-1/2
54	916965	1	{00000}-{ }	LOCKWASHER, Spring, 5/16
55	916950	1	{00000}-{ }	NUT, Hex, 3/8-16
56	8271015	1	{00000}-{ }	PIN

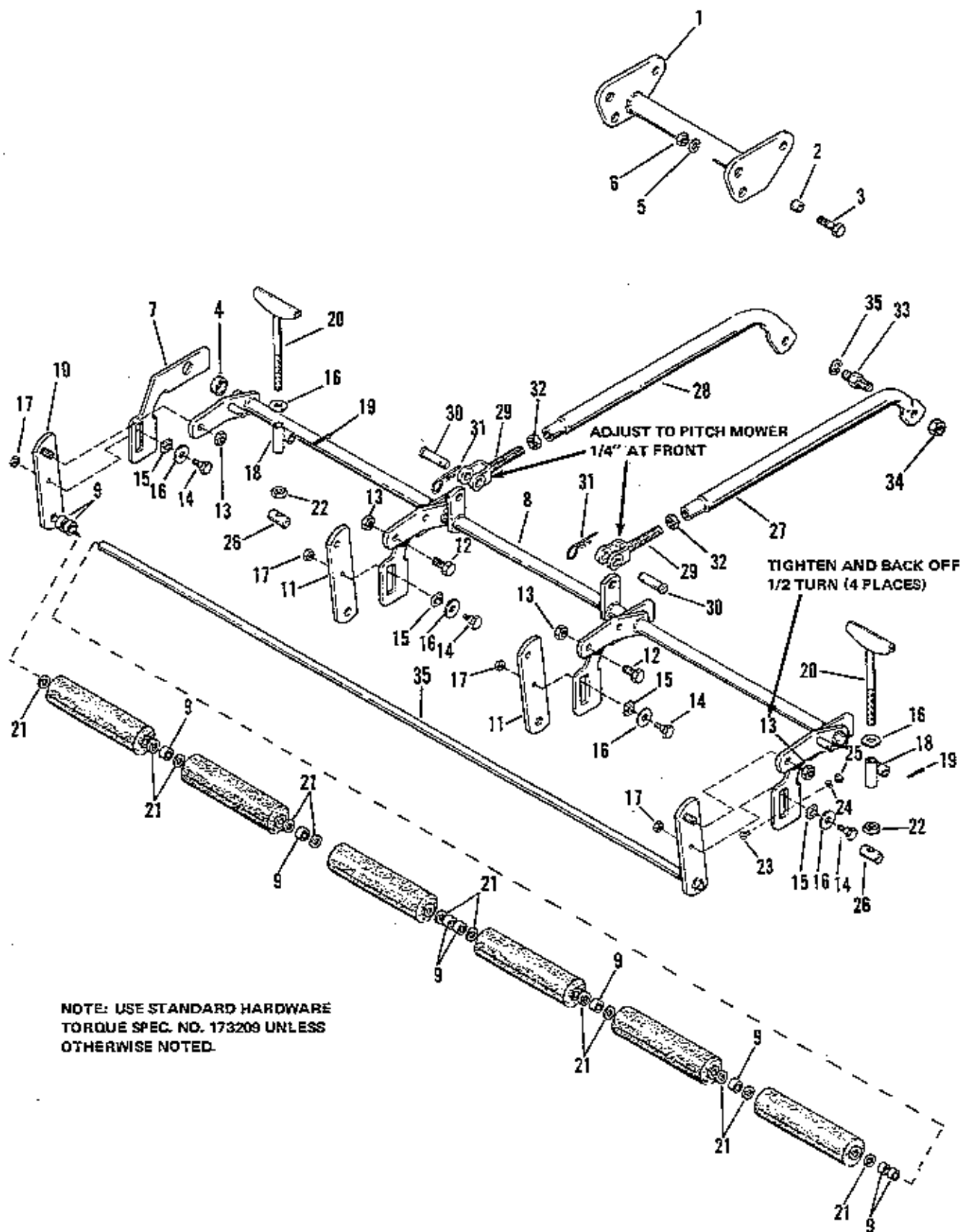




**57" Sickle Bar — Sickle Group**

77-2

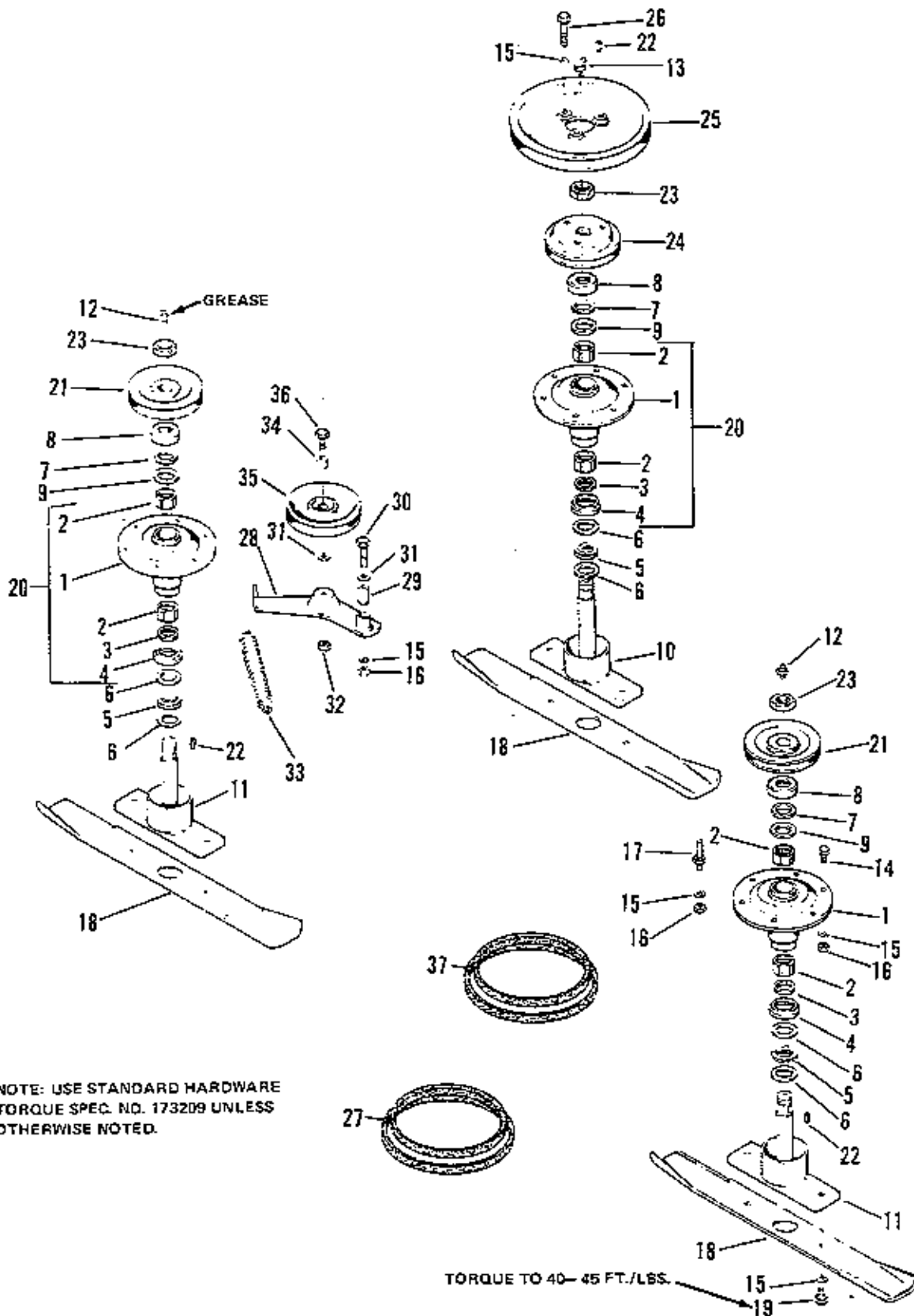
Ref. No.	Part No.	Qty.	Serial No.	Description
1	174216	1	{00000}-{	BAR ASSY, Cutter, (Includes Ref. No's 2-18)
2	174188	1	{00000}-{	BAR, Cutter
3	174201	1	{00000}-{	BLADE ASSY. (Includes Ref. No's 5-8)
4	174202	1	{00000}-{	BAR
5	174203	3	{00000}-{	SECTION, Knife
6	174535	16	{00000}-{	SECTION, Knife
7	924614	42	{00000}-{	RIVET, Oval Hd., No. 5-1/2 x 21/32
8	173559	1	{00000}-{	BAR, Filler
8	174536	19	{00000}-{	GUARD
10	174541	1	{00000}-{	FINGER ASSY, Shear
11	174537	5	{00000}-{	CLIP, Bar
12	174538	1	{00000}-{	CLIP, Bar
13	924058	20	{00000}-{	NUT, Hex, Lock, 7/16-14
14	922098	9	{00000}-{	BOLT, Rd. Hd., Sq. Nk., 7/16-14 x 1-1/2
15	174539	5	{00000}-{	PLATE, Wear
16	174540	12	{00000}-{	WASHER, Plain
17	924324	10	{00000}-{	BOLT, Rd. Hd., Sq. Nk., 7/16-14 x 1-1/4
18	917403	1	{00000}-{	CAPSCREW, Hex Hd., 7/16-14 x 1-1/2
19	920677	1	{00000}-{	CAPSCREW, Hex Hd., 5/16-18 x 1
20	174183	1	{00000}-{	TUBE, Square
21	922130	1	{00000}-{	CAPSCREW, Hex Hd., 3/8-16 x 2-1/4
22	919361	3	{00000}-{	CAPSCREW, Hex Hd., 7/16-14 x 2
23	928957	1	{00000}-{	CAPSCREW, Hex Hd., 7/8 7/16-14 x 1/4
24	923428	7	{00000}-{	NUT, Hex, Full Lock, 3/8-16
25	174191	1	{00000}-{	HEAD, Sickle
26	917358	5	{00000}-{	LOCKWASHER, Spring, 5/16
27	921515	5	{00000}-{	CAPSCREW, Hex Hd., 5/16-24 x 3/4
28	926109	1	{00000}-{	CAPSCREW, Hex Hd., 7/16-14 x 2-1/4
29	173141	4	{00000}-{	WASHER
30	916965	5	{00000}-{	LOCKWASHER, Spring, 3/8
31	8161198	2	{00000}-{	BEARING, Needle
32	173177	2	{00000}-{	SPACER
33	918199	2	{00000}-{	LOCKWASHER, Spring, 7/16
34	918213	1	{00000}-{	NUT, Hex, 7/16-14
35	173530	1	{00000}-{	CLEVIS ASSY
36	930583	2	{00000}-{	CAPSCREW, Hex Hd., 3/8-16 x 2-1/4, Gr. 8
37	8161056	2	{00000}-{	BEARING, Pivot Block
38	101025	6	{00000}-{	WASHER
39	921212	2	{00000}-{	CAPSCREW, Hex Hd., 7/16-14 x 1-1/2
40	916950	7	{00000}-{	NUT, Hex, 3/8-16
41	173529	1	{00000}-{	CLEVIS ASSY
42	174322	1	{00000}-{	HOUSING, Bearing Pitman
43	912808	4	{00000}-{	FITTING, Lube, 1/4-28
44	174194	1	{00000}-{	SUPPORT ASSY
45	917378	7	{00000}-{	WASHER, Plain, 3/8
46	174206	1	{00000}-{	SPACER
47	919360	1	{00000}-{	CAPSCREW, Hex Hd., 3/8-16 x 1-1/2
48	153058	1	{00000}-{	PIN
49	174181	1	{00000}-{	SHOE ASSY
50	105249	2	{00000}-{	PIN
51	106787	3	{00000}-{	CLIP, Spring
52	174393	1	{00000}-{	BRACKET
53	907731	1	{00000}-{	CAPSCREW, Hex Hd., 3/8-16 x 1
54	174368	1	{00000}-{	PLATE, Wear
55	174557	1	{00000}-{	SUPPORT, Div. Brd.
56	108766	1	{00000}-{	BOLT, Hex, Shoulder
57	101078	1	{00000}-{	BOARD, Divider
58	101079	1	{00000}-{	ROD ASSY, Divider
59	919444	5	{00000}-{	BOLT, Rd. Hd., Sq. Nk., 3/8-16 x 1-1/2
60	101120	1	{00000}-{	DECAL, Safety First
61	101121	1	{00000}-{	DECAL, Engine Shut-off
62	8161196	1	{00000}-{	HOUSING, Bearing Pitman



## 60" Rotary Mower — Rocker Arm &amp; Roller Group

77-2

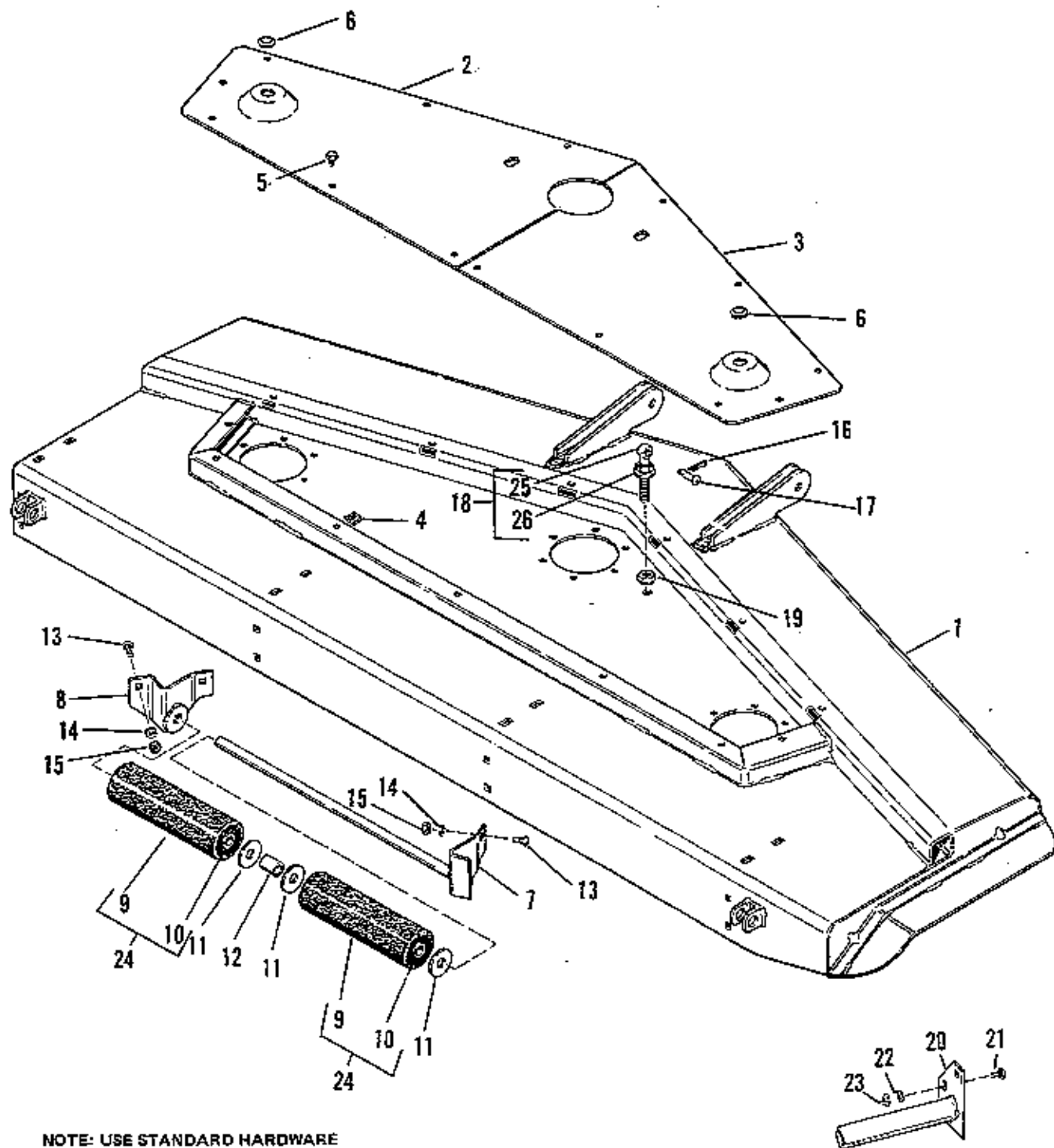
Ref. No.	Part No.	Qty.	Serial No.	Description
1	172571	1	{00000}-{ }	ARM ASSY, Rocker
2	172588	2	{00000}-{ }	SPACER
3	907735	2	{00000}-{ }	CAPSCREW, Hex Hd, 1/2-13 x 1-3/4
4	918430	4	{00000}-{ }	WASHER, Plain, 7/16
5	916966	2	{00000}-{ }	LOCKWASHER, Spring, 1/2
6	916951	2	{00000}-{ }	NUT, Hex, 1/2-13
7	172598	1	{00000}-{ }	BRACKET, Roller
8	175321	1	{00000}-{ }	ROCKER ASSY, Arm
9	172914	10	{00000}-{ }	SPACER
10	172633	1	{00000}-{ }	BAR ASSY, Roller
11	172627	2	{00000}-{ }	BAR, Roller
12	917279	2	{00000}-{ }	CAPSCREW, Hex Hd., 1/2-13 x 1-1/4
13	922134	4	{00000}-{ }	NUT, Hex, Lock, 1/2-13
14	172622	4	{00000}-{ }	BOLT, Shoulder
15	172567	4	{00000}-{ }	SLIDE
16	918431	6	{00000}-{ }	WASHER, Plain, 1/2
17	928731	4	{00000}-{ }	NUT, Hex, Lock, Jam, 3/8-16
18	172621	2	{00000}-{ }	PIVOT ASSY
19	918458	2	{00000}-{ }	PIN, Cotter, 3/16 x 1
20	172628	2	{00000}-{ }	SCREW ASSY, Adj.
21	116001	12	{00000}-{ }	WASHER
22	924650	2	{00000}-{ }	NUT, Hex, Full Lock, Jam, 1/2-13
23	920562	16	{00000}-{ }	BOLT, Rd. Hd., Sq. Nk., 5/16-18 x 3/4
24	917356	16	{00000}-{ }	LOCKWASHER, Spring, 5/16
25	917372	16	{00000}-{ }	NUT, Hex, 5/16-18
26	172565	2	{00000}-{ }	PIN, Cotter
27	175319	1	{00000}-{ }	BAIL, R.H.
28	175320	1	{00000}-{ }	BAIL, L.H.
29	172570	2	{00000}-{ }	YOKE
30	112052	2	{00000}-{ }	PIN, Yolk
31	918196	2	{00000}-{ }	PIN, Quick, 1-7/8
32	922014	2	{00000}-{ }	NUT, Hex, Lock, Jam, 5/8-18
33	172623	2	{00000}-{ }	BOLT, Shoulder, Special
34	930631	2	{00000}-{ }	NUT, Hex, Jam, Finished, 5/8-11
35	927794	2	{00000}-{ }	RING, E, External
36	175730	8	{00000}-{ }	ROLLER
37	175729	6	{00000}-{ }	ROLLER, w/Bushings
38	172635	1	{00000}-{ }	SHAFT ASSY, Roller
39	172591	1	{00000}-{ }	SPACER
40	175731	12	{00000}-{ }	BUSHING



**60" Rotary Mower – Arbor & Blade Group**

77-2

Ref. No.	Part No.	Qty.	Serial No.	Description
1	172592	3	(00000)-( )	TUBE SUB-ASSY, Arbor
2	105195	6	(00000)-( )	BEARING, Roller
3	172588	3	(00000)-( )	SEAL
4	172587	3	(00000)-( )	CUP, Seal
5	172584	3	(00000)-( )	SPRING
6	172586	6	(00000)-( )	WASHER
7	172590	3	(00000)-( )	BEARING, Thrust
8	172585	3	(00000)-( )	CUP
9	172589	3	(00000)-( )	WASHER, Thrust
10	172576	1	(00000)-( )	ARBOR ASSY, Drive Center
11	172577	2	(00000)-( )	ARBOR ASSY, Side
12	914687	2	(00000)-( )	FITTING, Lube, 1/4-28
13	918186	1	(00000)-( )	FITTING, Lube, 1/4-28
14	907731	17	(00000)-( )	CAPSCREW, Hex Hd., 3/8-16 x 1
15	916965	28	(00000)-( )	LOCKWASHER, Spring, 3/8
16	916950	19	(00000)-( )	NUT, Hex, 3/8-16
17	156131	1	(00000)-( )	STUD, Stop
18	172741	3	(00000)-( )	BLADE, 21"
19	923490	6	(00000)-( )	CAPSCREW, Hex Hd., 3/8-16 x 1, Gr. 8
20	172596	3	(00000)-( )	TUBE ASSY, Arbor Drive
21	172575	2	(00000)-( )	PULLEY
22	930572	6	(00000)-( )	KEY, Hi Pro, 3/16 x 5/8
23	930532	3	(00000)-( )	NUT, Hex, Full Lock, Jam, 7/8-14
24	175295	1	(00000)-( )	PULLEY
25	175296	1	(00000)-( )	PULLEY
26	917402	3	(00000)-( )	CAPSCREW, Hex Hd., 3/8-16 x 2
27	172444	1	(00000)-( )	BELT, "V", Blade Drive
28	172601	1	(00000)-( )	LEVER ASSY, Idler
29	8171073	1	(00000)-( )	RACE, Inner
30	921971	1	(00000)-( )	CAPSCREW, Hex Hd., 3/8-16 x 1-3/4
31	917642	3	(00000)-( )	WASHER, Plain, 5/16
32	928731	1	(00000)-( )	NUT, Hex Lock, Jam, 3/8-16
33	108449	1	(00000)-( )	SPRING, Tension
34	170291	1	(00000)-( )	SPACER
35	172930	1	(00000)-( )	PULLEY, Idler
36	108497	1	(00000)-( )	SCREW, Special
37	172420	1	(00000)-( )	BELT, "V", PTO

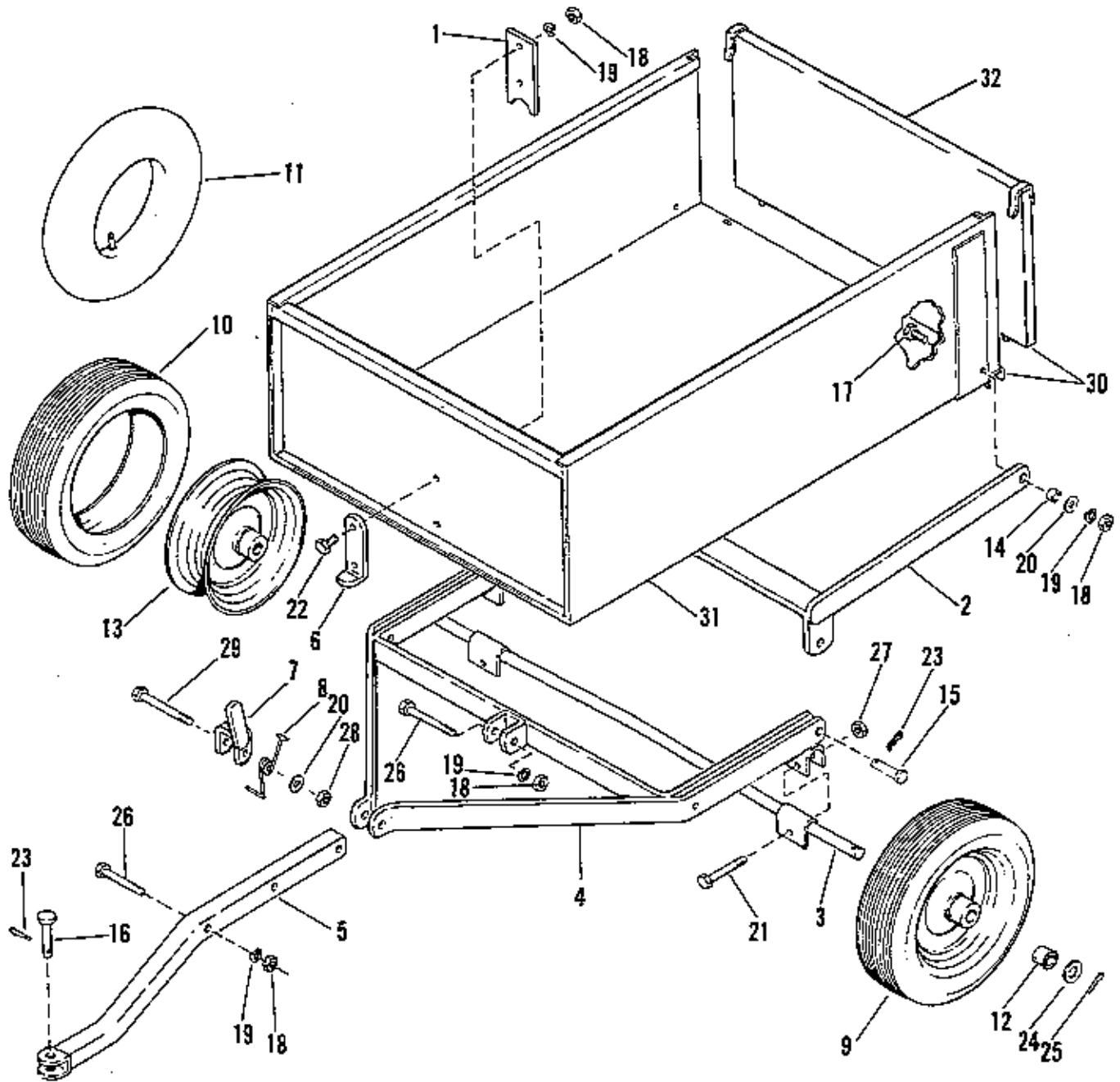


NOTE: USE STANDARD HARDWARE  
TORQUE SPEC. NO. 173209 UNLESS  
OTHERWISE NOTED.

## 60" Rotary Mower – Deck &amp; Cover Group

77-2

Ref. No.	Part No.	Qty.	Serial No.	Description
1	1664146	1	{00000}-{ }	DECK ASSY
2	172642	1	{00000}-{ }	PLATE, Cover, R.H.
3	172968	1	{00000}-{ }	PLATE, Cover, L.H.
4	930663	14	{00000}-{ }	NUT, Speed, Thin
5	930617	14	{00000}-{ }	SCREW, Self-tapping, Hex, Wshr. Hd., 5/16 x 5/8
6	172971	2	{00000}-{ }	BUTTON, Plug
7	172606	1	{00000}-{ }	BRACKET & SHAFT ASSY
8	173270	1	{00000}-{ }	BRACKET ASSY
9	175730	2	{00000}-{ }	ROLLER
10	175731	4	{00000}-{ }	BUSHING
11	116001	3	{00000}-{ }	WASHER
12	123025	1	{00000}-{ }	SPACER
13	920562	4	{00000}-{ }	BOLT, Rd. Hd., Sq. Nk., 5/16-18 x 3/4
14	917356	4	{00000}-{ }	LOCKWASHER, Spring, 5/16
15	917372	4	{00000}-{ }	NUT, Hex, 5/16-18
16	106787	2	{00000}-{ }	CLIP, Spring
17	923087	2	{00000}-{ }	PIN, Yoke, 3/8
18	176887	2	{00000}-{ }	BOLT ASSY, Eye
19	930649	4	{00000}-{ }	NUT, Hex, Lock, 7/16-14
20	173551	1	{00000}-{ }	GUARD ASSY, Stone
21	923232	2	{00000}-{ }	BOLT, Rd. Hd., Sq. Nk., 3/8-16 x 1
22	916965	2	{00000}-{ }	LOCKWASHER, Spring, 3/8
23	916950	2	{00000}-{ }	NUT, Hex, 3/8-16
24	175729	2	{00000}-{ }	ROLLER, w/Bushings
25	173267	2	{00000}-{ }	BOLT, Eye
26	930649	2	{00000}-{ }	NUT, Flange, Whiz Lock, 7/16-14



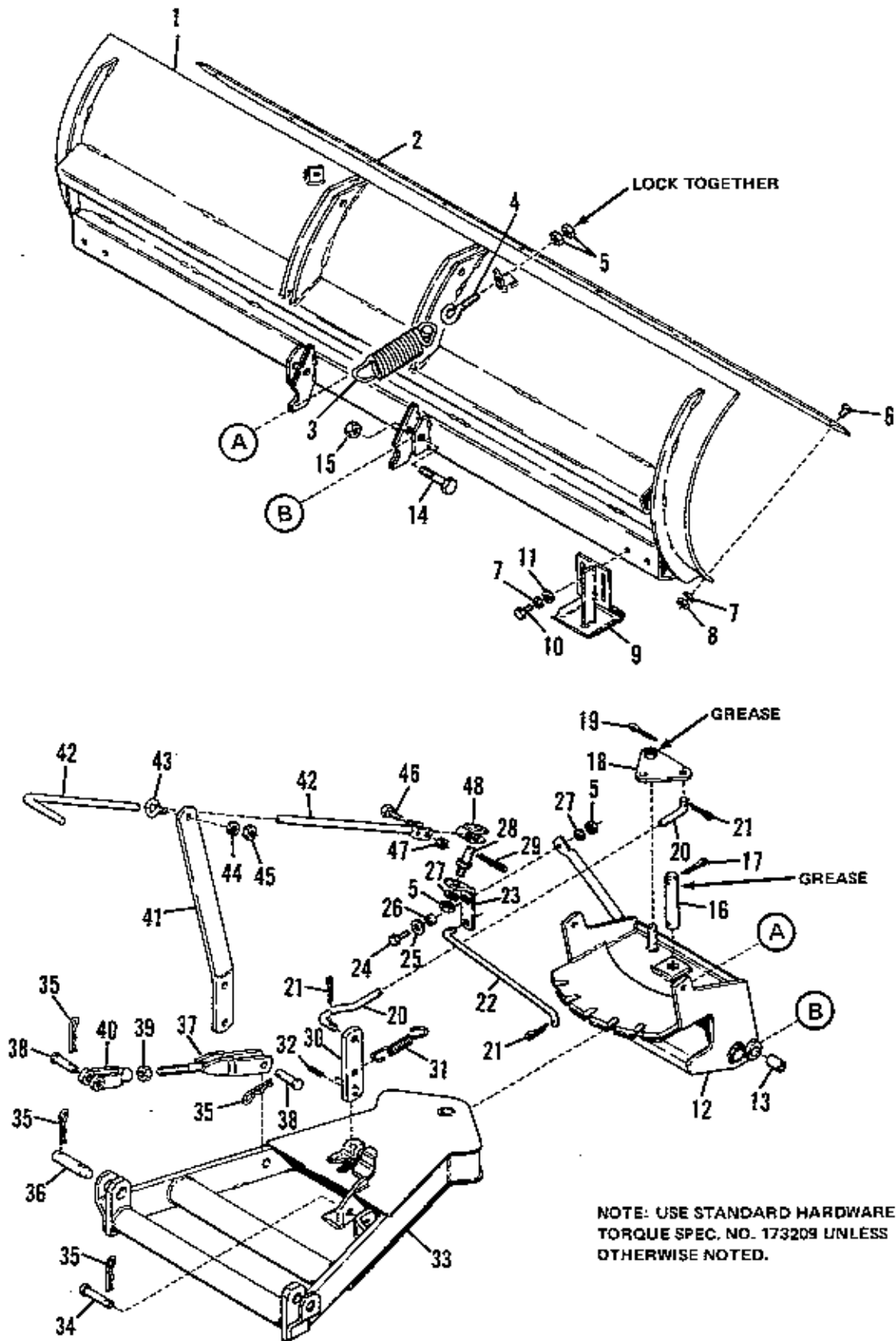
NOTE: USE STANDARD HARDWARE  
TORQUE SPEC. NO. 173209 UNLESS  
OTHERWISE NOTED.



## Dump Cart

77-2

Ref. No.	Part No.	Qty.	Serial No.	Description
1	102005	1	{00000}-{ }	PLATE, Box Guide
2	102024	1	{00000}-{ }	PIVOT, Box Assy.
3	102027	1	{00000}-{ }	AXLE ASSEMBLY
4	102035	1	{00000}-{ }	FRAME ASSEMBLY
5	102037	1	{00000}-{ }	TONGUE ASSEMBLY
6	102040	1	{00000}-{ }	PLATE, Box Catch
7	102051	1	{00000}-{ }	CLEVIS ASSEMBLY
8	102075	1	{00000}-{ }	SPRING, Torsion
9	170320	2	{00000}-{ }	WHEEL & TIRE ASSEMBLY
10	102052	2	{00000}-{ }	TIRE
11	153038	2	{00000}-{ }	TUBE, 4.00 x 8
12	156316	4	{00000}-{ }	BEARING
13	170319	2	{00000}-{ }	WHEEL
14	8151076	2	{00000}-{ }	BUSHING
15	102004	2	{00000}-{ }	PIN, Pivot
16	105249	1	{00000}-{ }	PIN
17	907731	2	{00000}-{ }	CAPSCREW, Hex, 3/8-16 x 1
18	916950	6	{00000}-{ }	NUT, Hex Full, 3/8-16
19	916965	6	{00000}-{ }	LOCKWASHER, 3/8
20	917378	3	{00000}-{ }	WASHER, 3/8
21	917398	2	{00000}-{ }	CAPSCREW, 5/16-18 x 1 3/4
22	917400	2	{00000}-{ }	CAPSCREW, Hex, 3/8-16 x 1 1/4
23	918196	3	{00000}-{ }	PIN, Quick
24	918433	2	{00000}-{ }	WASHER, Plain, 3/4
25	918459	2	{00000}-{ }	PIN, Cotter, 3/16 x 1 1/2
26	919362	2	{00000}-{ }	CAPSCREW, Hex, 3/8-16 x 2 1/4
27	923362	2	{00000}-{ }	NUT, Hex Full, 5/16-18
28	923426	1	{00000}-{ }	NUT, Hex Full, 3/8-16
29	930596	1	{00000}-{ }	CAPSCREW, Hex, 3/8-16 x 2 3/4
30	1655704	1	{00000}-{ }	TRAILER & END GATE ASSY.
31	102002	1	{00000}-{ }	BODY, Trailer
32	102003	1	{00000}-{ }	GATE END

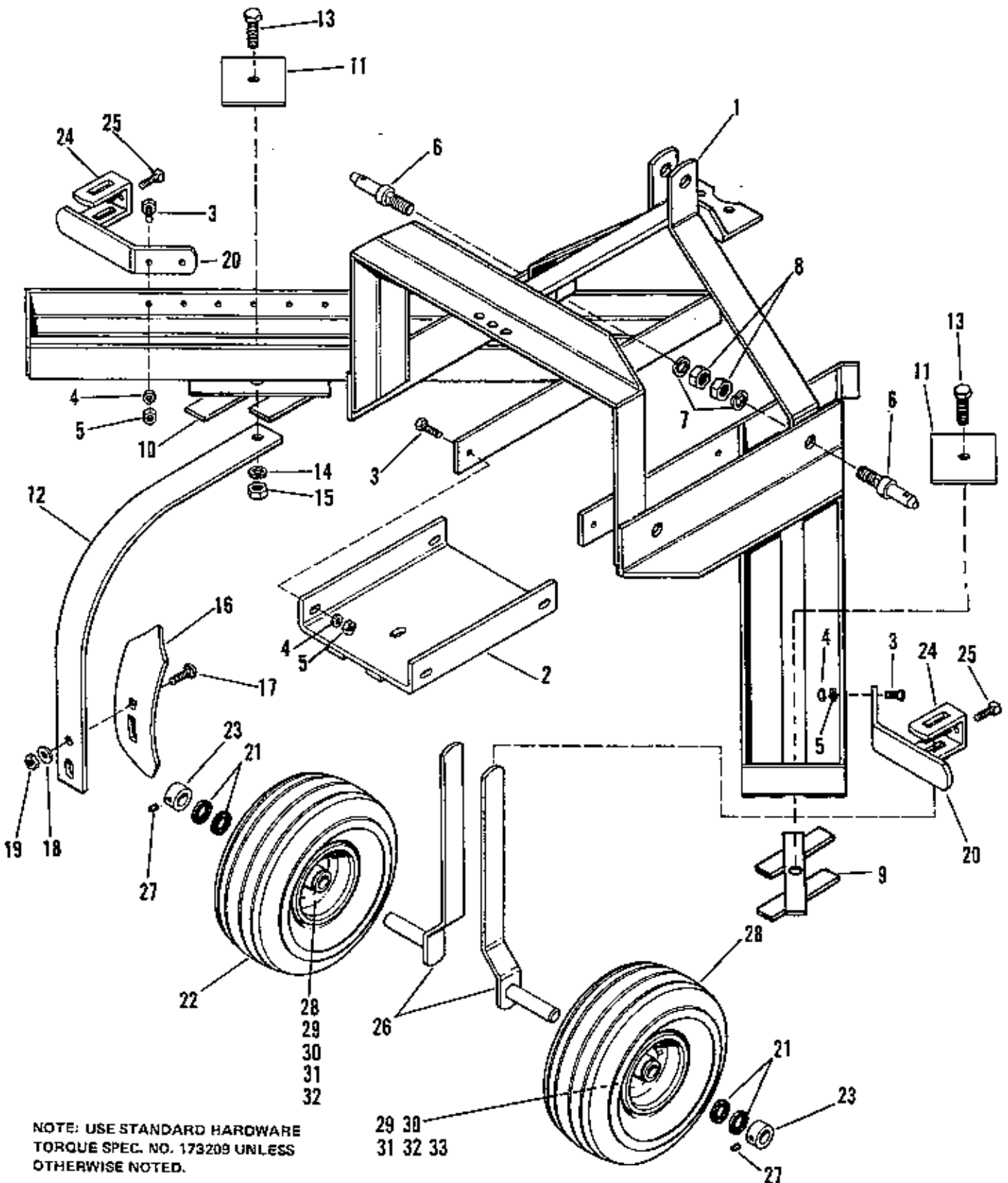


NOTE: USE STANDARD HARDWARE  
TORQUE SPEC. NO. 173209 UNLESS  
OTHERWISE NOTED.

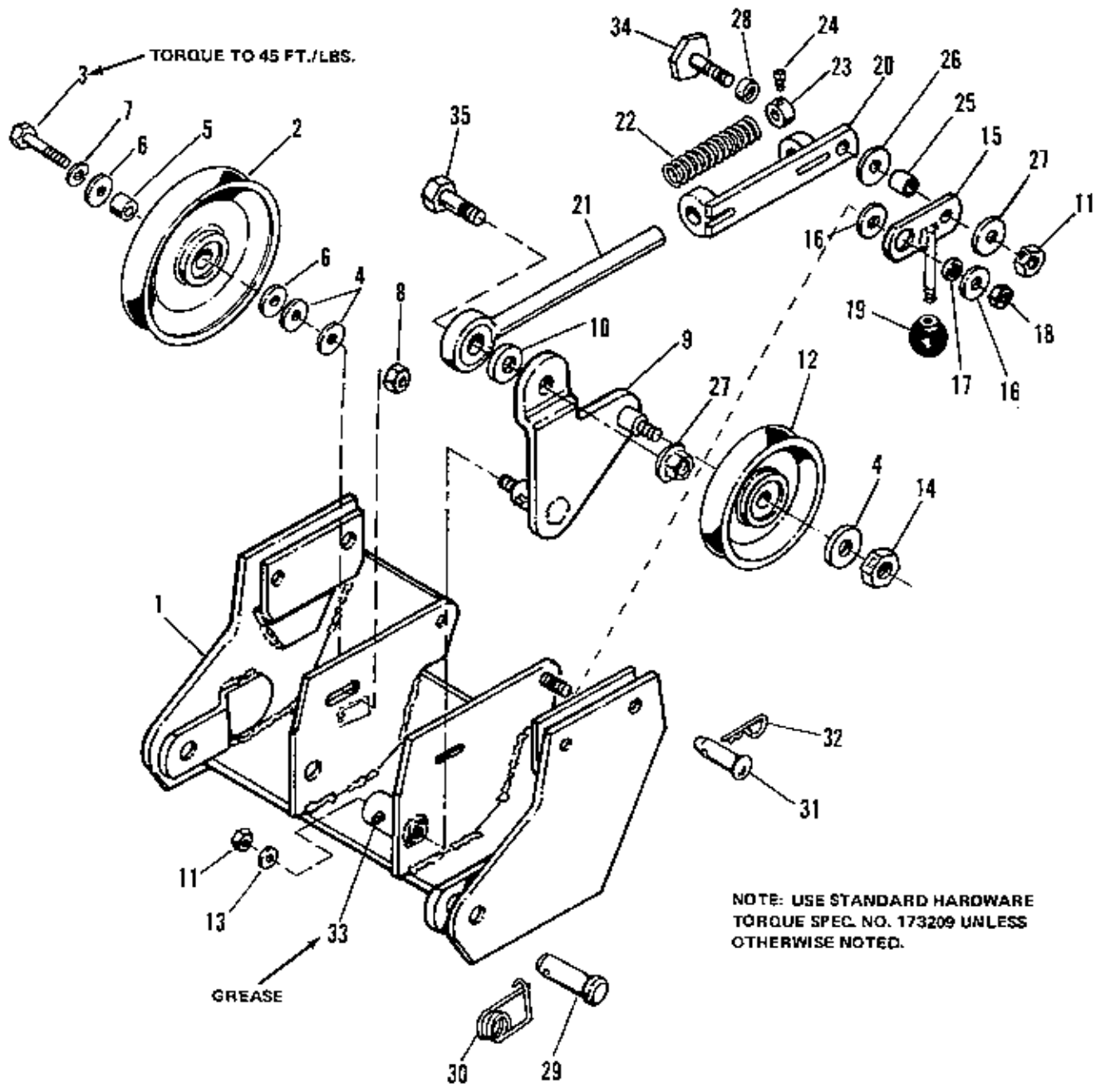
## 60" Dozer Blade

77-2

Ref. No.	Part No.	Qty.	Serial No.	Description
1	173355	1	{00000}-{ }	BLADE ASSY, 60"
2	173428	1	{00000}-{ }	PLATE, Wear
3	101126	2	{00000}-{ }	SPRING, Tension
4	107121	2	{00000}-{ }	BOLT, Eye
5	917372	6	{00000}-{ }	NUT, Hex, 5/16-18
6	923232	9	{00000}-{ }	BOLT, Rd. Hd., Sq. Nk., 3/8-16 x 1
7	916966	13	{00000}-{ }	LOCKWASHER, Spring, 3/8
8	916950	9	{00000}-{ }	NUT, Hex, 3/8-16
9	107106	2	{00000}-{ }	SHOE ASSY
10	908127	4	{00000}-{ }	CAPSCREW, Hex Hd., 3/8-16 x 3/4
11	917378	4	{00000}-{ }	WASHER, Plain, 3/8
12	173343	1	{00000}-{ }	FRAME ASSY, Pivot
13	174061	2	{00000}-{ }	SPACER
14	927469	2	{00000}-{ }	CAPSCREW, Hex Hd., 1/2-13 x 2-1/4, Gr. 8
15	922134	2	{00000}-{ }	NUT, Hex, Lock, 1/2-13
16	173571	1	{00000}-{ }	PIN, Pivot
17	919314	2	{00000}-{ }	PIN, Cotter, 3/16 x 1-1/4
18	107116	1	{00000}-{ }	PLATE ASSY, Pivot
19	918452	2	{00000}-{ }	PIN, Cotter
20	173348	1	{00000}-{ }	ROD, Latch
21	922000	4	{00000}-{ }	PIN, Cotter, 3/32 x 5/8
22	173663	1	{00000}-{ }	ROD, Pivot
23	107119	1	{00000}-{ }	ARM, Pivot
24	916431	1	{00000}-{ }	CAPSCREW, Hex Hd., 5/16-18 x 1
25	917642	1	{00000}-{ }	WASHER, Plain, 5/16
26	156150	1	{00000}-{ }	SPACER
27	917356	2	{00000}-{ }	LOCKWASHER, Spring, 5/16
28	107120	1	{00000}-{ }	STUD, Pivot
29	918196	1	{00000}-{ }	PIN, Quick, 1-7/8
30	173347	1	{00000}-{ }	LATCH
31	107135	1	{00000}-{ }	SPRING
32	921469	2	{00000}-{ }	PIN, Spring, 7/32 x 1
33	173314	1	{00000}-{ }	FRAME ASSY
34	8181008	6	{00000}-{ }	PIN, King
35	106788	6	{00000}-{ }	CLIP, Spring
36	173741	2	{00000}-{ }	PIN, Hitch
37	174778	1	{00000}-{ }	ROD ASSY
38	157194	2	{00000}-{ }	PIN, End Adj.
39	919262	1	{00000}-{ }	NUT, Hex, Jam, 1/4-20
40	157631	1	{00000}-{ }	YOKE, End Adj.
41	174246	1	{00000}-{ }	SUPPORT
42	173568	1	{00000}-{ }	HANDLE ASSY
43	172162	1	{00000}-{ }	BOLT, Eye
44	916964	1	{00000}-{ }	LOCKWASHER, Spring, 1/4
45	916622	1	{00000}-{ }	NUT, Hex, 1/4-20
46	919933	1	{00000}-{ }	CAPSCREW, Hex Hd., 5/16-18 x 1-1/2
47	923362	1	{00000}-{ }	NUT, Hex, Lock, 5/16-18
48	106131	1	{00000}-{ }	FORK ASSY



Ref. No.	Part No.	Qty.	Serial No.	Description
1	173908	1	{00000}-{ }	FRAME, Cultivator
2	174666	8	{00000}-{ }	PLATE ASSY, Support
3	930579	8	{00000}-{ }	CAPSCREW, Hex Hd., 3/8-16 x 1-1/4
4	916965	8	{00000}-{ }	LOCKWASHER, Spring, 3/8
5	916950	8	{00000}-{ }	NUT, Hex, 3/8-16
6	172500	2	{00000}-{ }	PIN, Hitch
7	917373	2	{00000}-{ }	LOCKWASHER, Spring, 5/8
8	915726	2	{00000}-{ }	NUT, Hex, Full, 5/8-11
9	173896	3	{00000}-{ }	HOLDER ASSY, Shank, R.H.
10	173897	3	{00000}-{ }	HOLDER ASSY, Shank, L.H.
11	173895	6	{00000}-{ }	PLATE
12	174681	7	{00000}-{ }	SHANK
13	923154	7	{00000}-{ }	CAPSCREW, Hex Hd., 1/2-13 x 1-1/2
14	916966	7	{00000}-{ }	LOCKWASHER, Spring, 1/2
15	916951	7	{00000}-{ }	NUT, Hex, 1/2-13
16	174663	7	{00000}-{ }	TEETH, Cultivator
17	922114	14	{00000}-{ }	BOLT, Plow, No. 3, Hd. Reg., 7/16-14 x 1-1/4
18	818430	14	{00000}-{ }	WASHER, Plain, 7/16
19	918213	14	{00000}-{ }	NUT, Hex, 7/16-14
20	174660	2	{00000}-{ }	SHANK
21	174703	4	{00000}-{ }	SEAL, Felt
22	1608379	2	{00000}-{ }	WHEEL & TIRE ASSY, Front
23	8021010	2	{00000}-{ }	COLLAR, Set
24	8271023	1	{00000}-{ }	SHANK, Clamp
25	930535	2	{00000}-{ }	SCREW, Set, Sq. Hd., Cup Pt., 3/8-16 x 1, Gr. 8
26	174657	2	{00000}-{ }	STANDARD & SPINDLE ASSY
27	928691	2	{00000}-{ }	SCREW, Set, Hex, Skt., 5/16-18 x 5/16
28	1608380	1	{00000}-{ }	WHEEL, Front
29	163108	1	{00000}-{ }	TIRE, 4.10/3.50 - 4
30	163109	1	{00000}-{ }	TUBE, 4.10/3.50
31	163110	1	{00000}-{ }	BEARING
32	163111	1	{00000}-{ }	BEARING, Relief
33	8201073	1	{00000}-{ }	NUT, Special



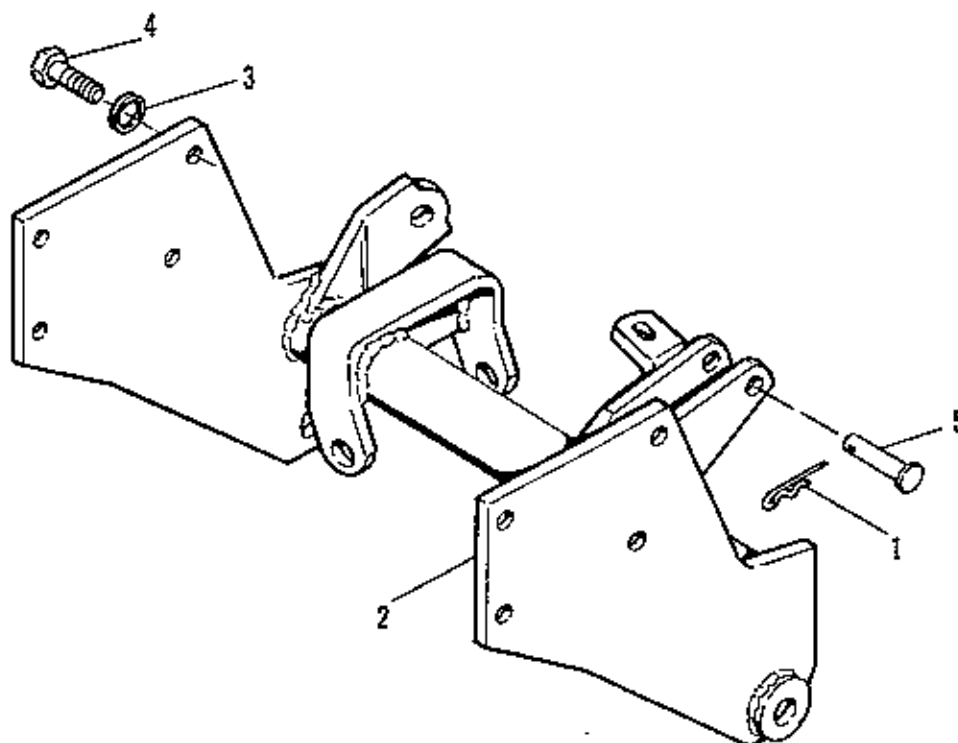
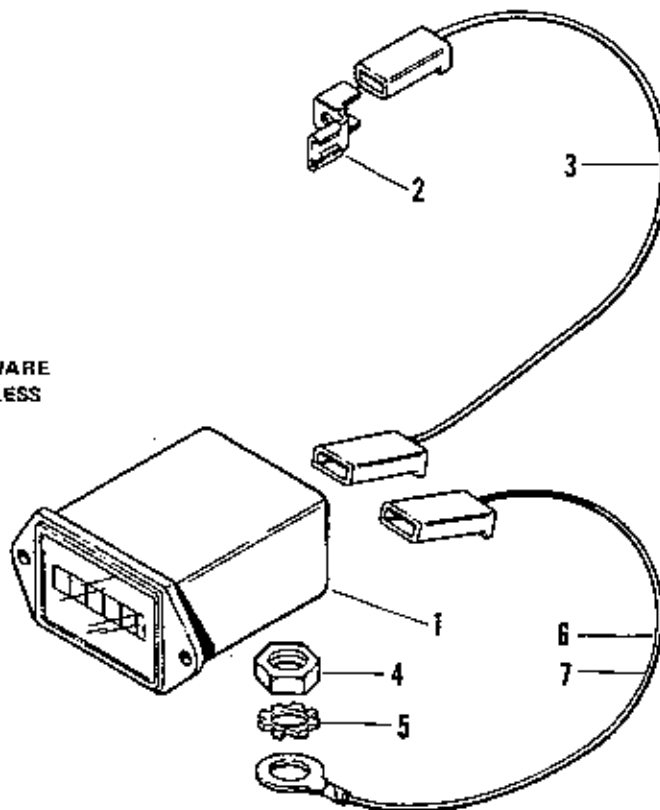
NOTE: USE STANDARD HARDWARE  
TORQUE SPEC. NO. 173209 UNLESS  
OTHERWISE NOTED.

**60" Rotary Mower & 57" Sickle Bar Hitch Assy**

77-2

Ref. No.	Part No.	Qty.	Serial No.	Description
1	177010	1	{00000}-{	SUPPORT ASSY
2	171641	1	{00000}-{	PULLEY
3	923433	1	{00000}-{	CAPSCREW, Hex Hd., 3/8-24 x 1-3/4, Gr. 8
4	917642	3	{00000}-{	WASHER, Plain, 5/16
5	170291	1	{00000}-{	SPACER
6	153052	2	{00000}-{	WASHER
7	916966	1	{00000}-{	LOCKWASHER, Spring, 3/8
8	930789	1	{00000}-{	NUT, Flange, Whiz Lock, 3/8-24
9	177014	1	{00000}-{	LEVER ASSY
10	918431	1	{00000}-{	WASHER, Plain, 1/2
11	923428	2	{00000}-{	NUT, Hex, Full Lock, 3/8-16
12	171640	1	{00000}-{	PULLEY
13	154325	1	{00000}-{	WASHER
14	924660	1	{00000}-{	NUT, Hex, Full Lock, Jam, 1/2-13
15	171642	1	{00000}-{	LEVER ASSY
16	917378	3	{00000}-{	WASHER, Plain, 3/8
17	154177	1	{00000}-{	SPACER
18	928731	1	{00000}-{	NUT, Hex, Lock, Jam, 1/2-13
19	122005	1	{00000}-{	KNOB
20	177004	1	{00000}-{	GUIDE ASSY, Rod
21	177204	1	{00000}-{	BOLT, Eye
22	163103	1	{00000}-{	SPRING
23	105201	1	{00000}-{	COLLAR, Set
24	928804	1	{00000}-{	SCREW, Set, Sq. Nk., Cup Pt., 1/4-20 x 3/8, Gr. 8
25	153081	1	{00000}-{	SPACER
26	159134	1	{00000}-{	WASHER, Special
27	928352	1	{00000}-{	NUT, Hex, Flange, Whiz Lock, 3/8-16
28	8151076	1	{00000}-{	BUSHING
29	112052	2	{00000}-{	PIN, Yolk
30	176012	1	{00000}-{	CLIP, Pin Safety
31	102004	4	{00000}-{	PIN, Pivot
32	106788	4	{00000}-{	CLIP, Spring
33	921133	1	{00000}-{	FITTING, Lube. Dr. Type, 1/2
34	108418	1	{00000}-{	SCREW
35	108412	1	{00000}-{	BOLT, Shoulder

NOTE: USE STANDARD HARDWARE  
TORQUE SPEC. NO. 173029 UNLESS  
OTHERWISE NOTED.





*Hour Meter*

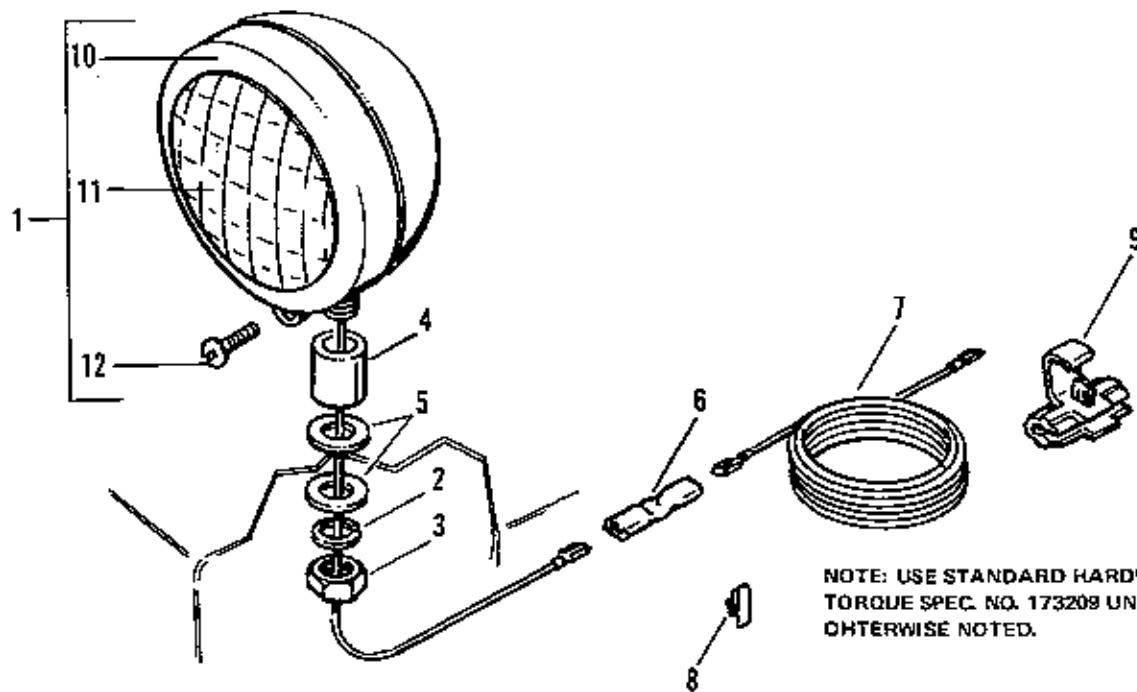
77-2

Ref. No.	Part No.	Qty.	Serial No.	Description
1		1	{00000}-{ }	METER, Hour
2	172996	1	{00000}-{ }	ADAPTOR, 2 Way
3	172998	1	{00000}-{ }	WIRE, Meter to Ground
4	916622	1	{00000}-{ }	NUT, Hex, 1/4-20
5	921880	1	{00000}-{ }	LOCKWASHER, External Tooth, 1/4
6	1655592	1	{00000}-{ }	CONNECTOR ASSY
7	1656083	1	{00000}-{ }	WIRE ASSY

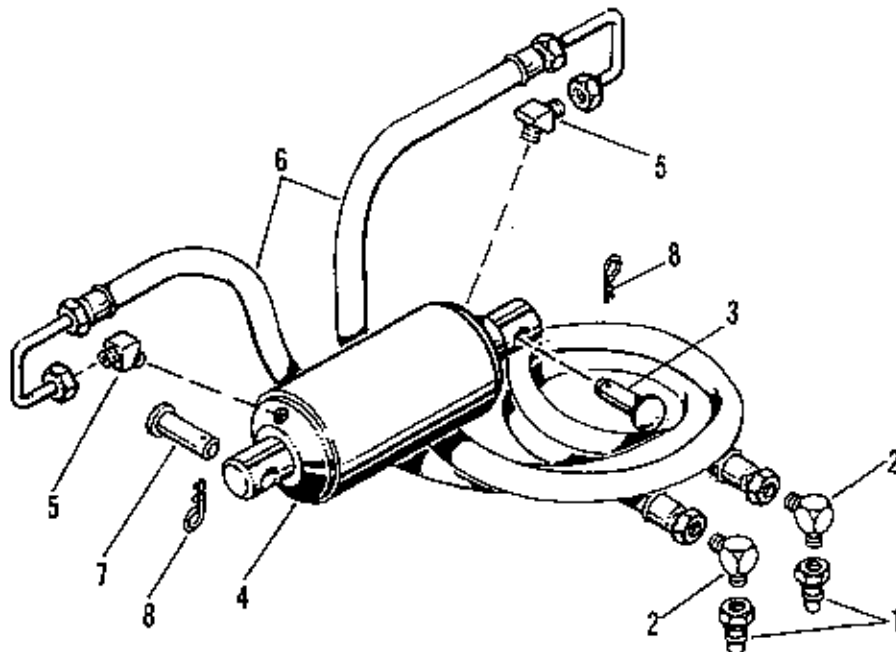
*Mfg. No. 1600202**Front Hitch, Dozer & Snow Blower*

77-2

Ref. No.	Part No.	Qty.	Serial No.	Description
1	106788	1	{00000}-{ }	CLIP, Spring
2	173626	1	{00000}-{ }	SUPPORT ASSY, Hitch
3	916966	8	{00000}-{ }	LOCKWASHER, Spring, 1/2
4	921176	8	{00000}-{ }	CAPSCREW, Hex Hd., 1/2-13 x 1-1/4
5	8181008	1	{00000}-{ }	PIN, King



NOTE: USE STANDARD HARDWARE  
TORQUE SPEC. NO. 173209 UNLESS  
OTHERWISE NOTED.



*Rear Light Kit*

77-2

Ref. No.	Part No.	Qty.	Serial No.	Description
1	122175	1	{00000}-( )	LAMP ASSY
2	916966	1	{00000}-( )	LOCKWASHER, Spring, 1/2
3	916961	1	{00000}-( )	NUT, Hex, 1/2-13
4	122053	1	{00000}-( )	SPACER
5	918430	2	{00000}-( )	WASHER, Plain, 7/16
6	1605751	1	{00000}-( )	CONNECTOR
7	122187	1	{00000}-( )	WIRE
8	122159	2	{00000}-( )	CLIP, Wire
9	122157	1	{00000}-( )	CONNECTOR
10	1850247	1	{00000}-( )	MOLDING ASSY
11	122164	1	{00000}-( )	BEAM, Seal
12	1650249	1	{00000}-( )	SCREW, Molding

*Mfg. No. 1600207**Hydraulic Cylinder*

77-2

Ref. No.	Part No.	Qty.	Serial No.	Description
1	173359	2	{00000}-( )	NOSE PIECE ASSY
2	172319	2	{00000}-( )	ELBOW
3	8181008	1	{00000}-( )	PIN, King
4	168279	1	{00000}-( )	CYLINDER
5	172320	2	{00000}-( )	FITTING
6	172305	2	{00000}-( )	HOSE
7	171690	1	{00000}-( )	PIN
8	106788	2	{00000}-( )	CLIP, Spring










# TORQUE SPECIFICATION FOR STANDARD MACHINE HARDWARE

Tolerance  $\pm 10\%$

SIZE	SAE GRADE #2 	SAE GRADE #5 	SAE GRADE #8 
8-32	19 In./Lbs.	30 In./Lbs.	41 In./Lbs.
8-36	20 "	31 "	43 "
10-24	27 "	43 "	60 "
10-32	31 "	49 "	68 "
1/4-20	66 "	8 Ft./Lbs.	12 Ft./Lbs.
1/4-28	76 "	10 "	14 "
5/16-18	11 Ft./Lbs.	17 "	25 "
5/16-24	12 "	19 "	25 "
3/8-16	20 "	30 "	45 "
3/8-24	23 "	35 "	50 "
7/16-14	30 "	50 "	70 "
7/16-20	35 "	55 "	80 "
1/2-13	50 "	75 "	110 "
1/2-20	55 "	90 "	120 "
9/16-20	65 "	110 "	150 "
9/16-18	75 "	120 "	170 "
5/8-11	90 "	150 "	220 "
5/8-18	100 "	180 "	240 "
3/4-10	180 "	260 "	386 "
3/4-16	180 "	300 "	420 "
7/8-9	140 "	400 "	600 "
7/8-14	155 "	440 "	660 "
1-8	220 "	580 "	900 "
1-12	240 "	640 "	1,000 "

**NOTES:**

- These torque values are to be used for all Simplicity hardware excluding: Locknuts, self-tapping screws, thread forming screws, and sheet metal screws.
- Unless otherwise noted on assembly drawings all torque values must meet this specification.

**BOLT HEAD MARKING**

S.A.E. GRADE:



