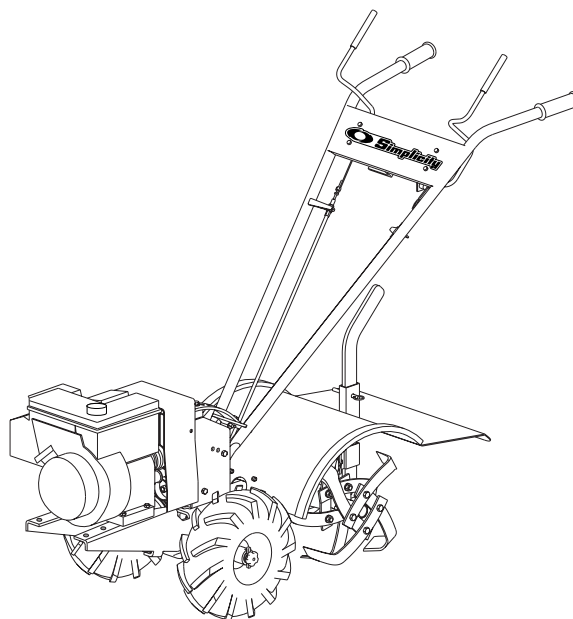




Parts Manual



Rear Tine Tillers

6HP Series

6HP Product

Mfg. No.	Description
----------	-------------

1694161	6016 RT, 6HP Tiller
---------	---------------------

1694908	6016 RT, 6HP Tiller
---------	---------------------

Part No.: 1730319

Rev. 11/2005

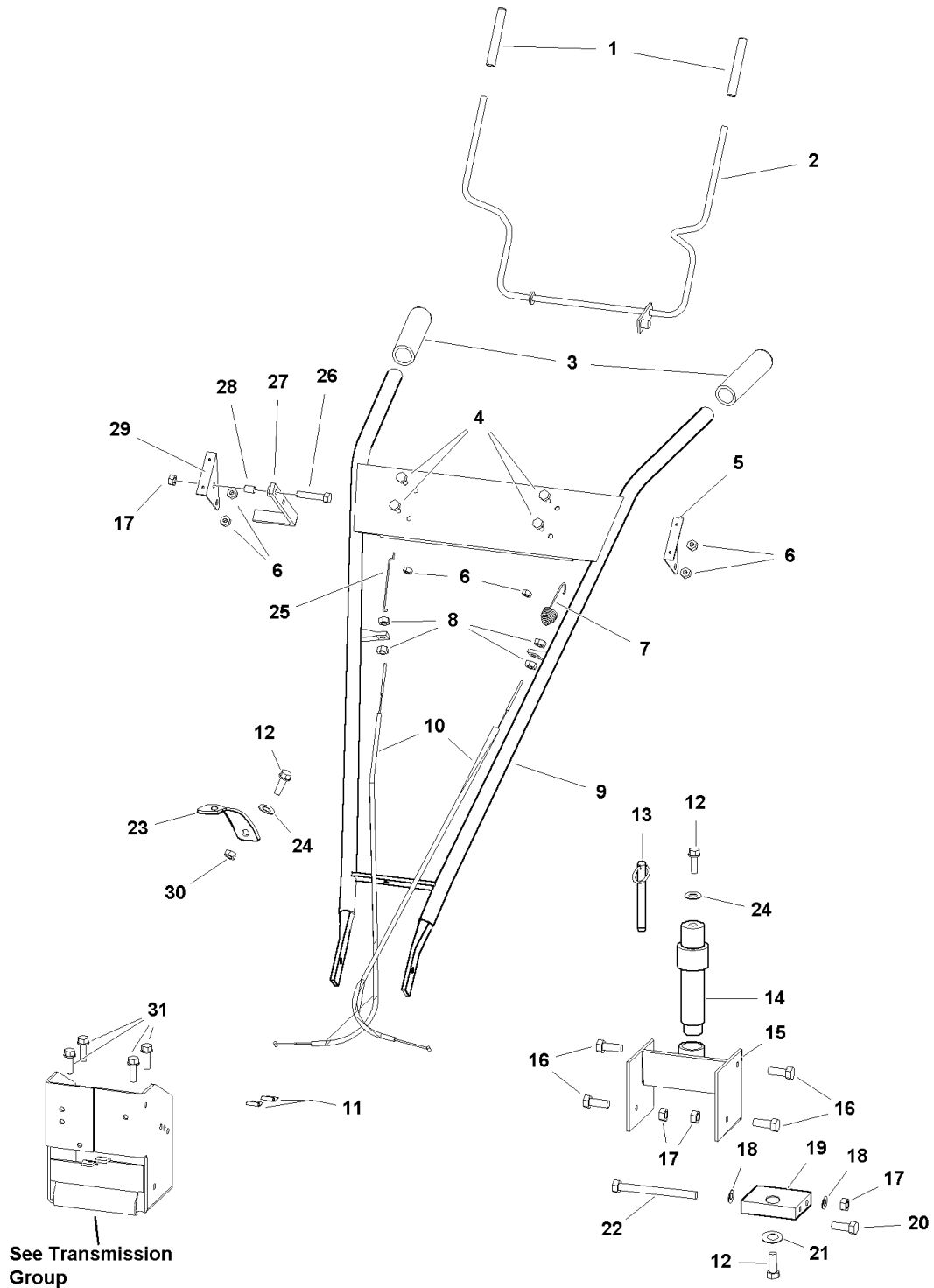
TP 400-2625-01-RT-S

PRODUCT COMPONENTS	PAGES
Handle Bar Group	4
Hood, Drag Stake & Tine Group	6
Engine, Belts & Wheels Group	8
Transmission Group	10
Wheel & Tiller Shaft Group	12
Decal Group	14
Torque Specification Chart	Inside Back Cover

Handle Bar Group

986100

NOTE: Unless noted otherwise,
use the standard hardware torque
specification chart.



See Transmission
Group

The above parts group applies to the following Mfg. Nos.:

1694161 - 6016 RT

1694908 - 6016 RT

Handle Bar Group

REF NO	PART NO.	QTY.	DESCRIPTION
1	1716699	2	HANDLE GRIP, Drive Control Lever
2	1722325	1	LEVER, Drive Control
3	1719038	2	HANDLE GRIP
4	1960392	4	SCREW, Pan Head Phillips #10-24 x 1/2
5	1716723	1	BRACKET, Drive Control Lever LH
6	1933896	6	NUT, Hex Nylock, 10-24
7	1716720	1	SPRING, Forward Cable Adjustment
8	2820438	4	NUT, Hex Jam, 5/16-24
9	1723692	1	HANDLE BAR ASSEMBLY
10	1719037	2	CABLE ASSEMBLY
11	1719063	2	C-CLAMP
12	1921332	3	CAPSCREW, Hex Head, 5/16-18 x 3/4
13	1723703	1	PIN, Detent
14	1723695	1	PIVOT ROD ASSEMBLY
15	1723696	1	PIVOT MOUNT ASSEMBLY
16	1921210	4	CAPSCREW, Hex Head, 3/8-16 x 1
17	1916950	5	NUT, Hex, 3/8-16
18	1924940	2	WASHER
19	1723694	1	PIVOT, Handle Bar Mount
20	1920415	1	CAPSCREW, Hex Head, 3/8-16 x 1-1/4
21	1716770	1	WASHER
22	1922648	1	CAPSCREW, Hex Head 3/8-16 x 4
23	1723697	1	PIVOT, Hnadle Bar Height Adjustment
24	1960044	2	WASHER
25	1716729	1	LINK, Reverse
26	1921977	1	CAPSCREW, Hex Head, 5/16-18 x 1-1/4
27	1716725	1	HANDLE, Reverse
28	1716704	1	BUSHING, Pivot, 5/16
29	1716722	1	BRACKET, Drive Control Lever RH
30	1935048	2	NUT, Hex Flange Tow Way Lock, 5/16-18
31	1921332	4	BOLT, Hex Flange Head, 5/16-18 x 3/4

Footnotes

The above parts group applies to the following Mfg. Nos.:

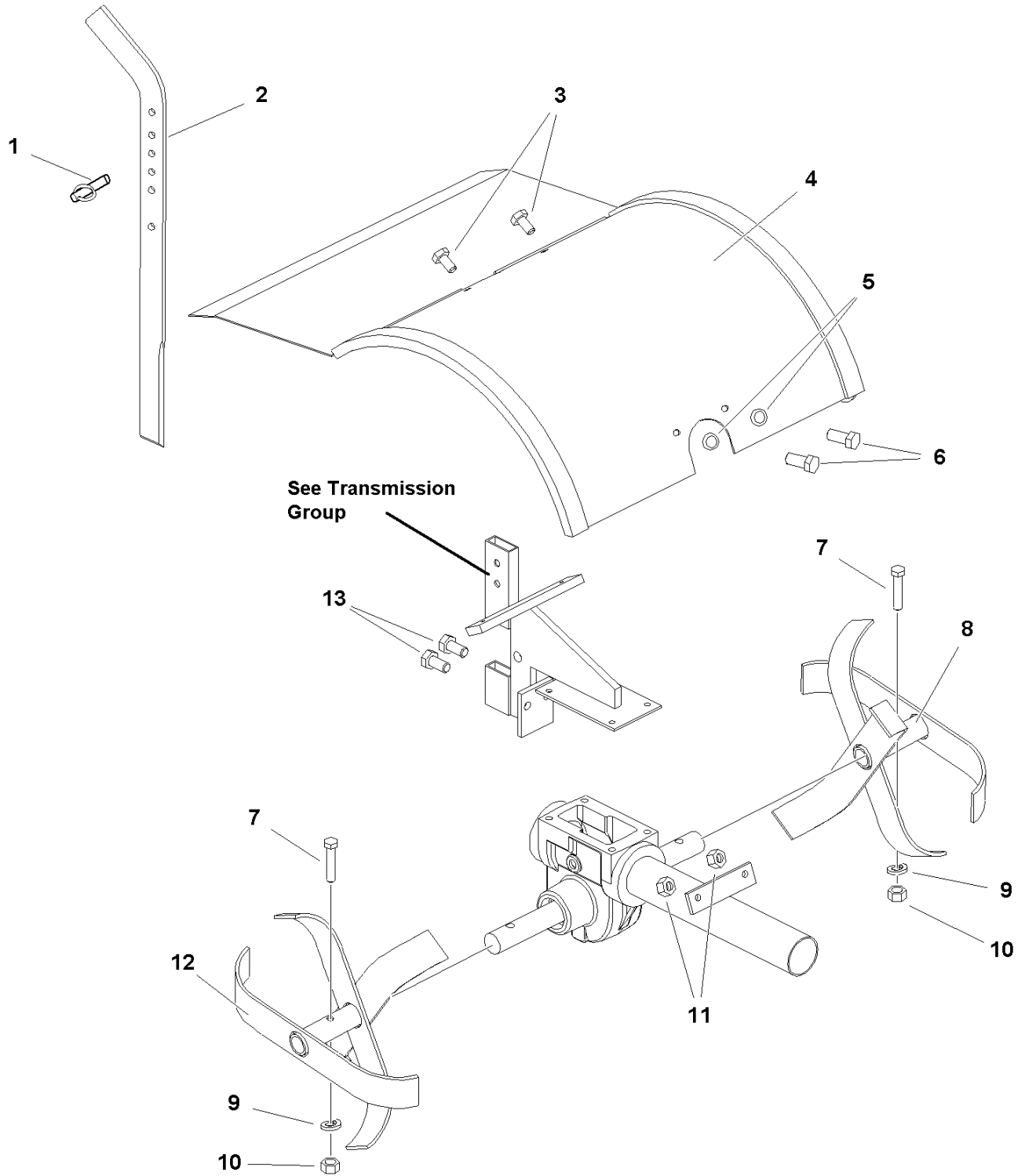
1694161 - 6016 RT

1694908 - 6016 RT

Hood, Drag Stake & Tine Group

986101

NOTE: Unless noted otherwise,
use the standard hardware torque
specification chart.



The above parts group applies to the following Mfg. Nos.:

1694161 - 6016 RT

1694908 - 6016 RT

Hood, Drag Stake & Tine Group

REF NO	PART NO.	QTY.	DESCRIPTION
1	1723703	1	PIN, Detent, 5/16
2	1723702	1	LEVER, Depth Regulator
3	1921958	2	CAPSCREW, Hex Head, 1/4 - 20 x 1/2
4	1722329	1	HOOD, Tiller, No Decal
5	1917356	2	LOCKWASHER, Spring, 5/16
6	1920787	2	CAPSCREW, Hex Head, 5/16-18 x 1/2
7	1921971	2	CAPSCREW, Hex Head, 3/8-16 x 1-3/4
8	1721513	1	TINE ASSEMBLY, LH
9	1916965	2	LOCKWASHER, Spring, 3/8
10	1930651	2	NUT, Hex Center Lock, 3/8-16
11	1935048	2	NUT, Hex Flange, 5/16-18
12	1721514	1	TINE ASSEMBLY, RH
13	1716701	2	BOLT, Hex Flange Head, 5/16-18 x 1/2

Footnotes

The above parts group applies to the following Mfg. Nos.:

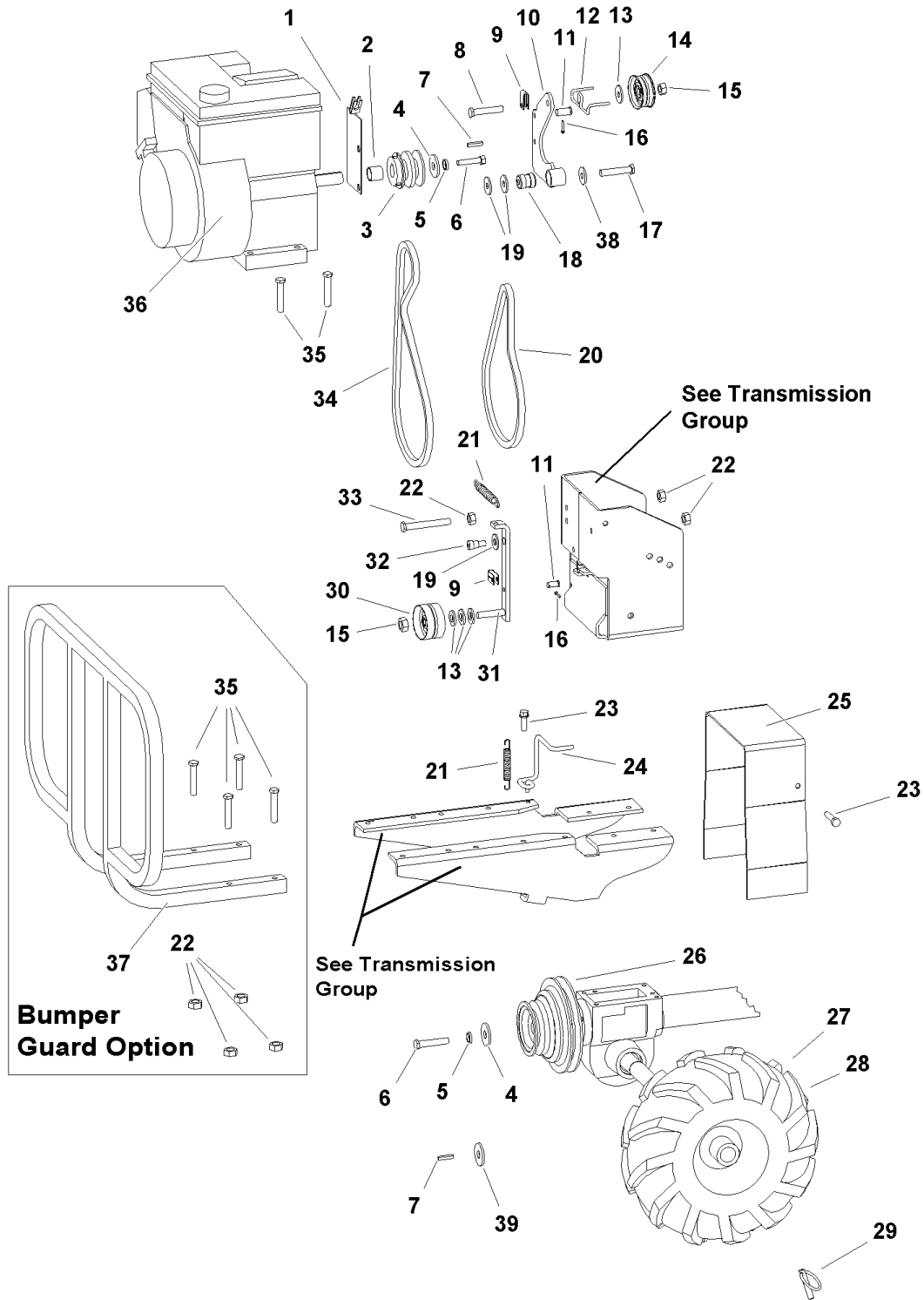
1694161 - 6016 RT

1694908 - 6016 RT

Engine, Belts & Wheels Group

986102

NOTE: Unless noted otherwise,
use the standard hardware torque
specification chart.



The above parts group applies to the following Mfg. Nos.:

- 1694161 - 6016 RT
- 1694908 - 6016 RT

Engine, Belts & Wheels Group

REF NO	PART NO.	QTY.	DESCRIPTION
1	1722157	1	BRACKET, Engine
2	1723711	1	SPACER, Engine
3	1722158	1	PULLEY, Engine 2 Groove
4	1716770	1	WASHER
5	1917356	2	LOCKWASHER, Spring, 5/16
6	1921515	2	CAPSCREW, Hex Head, 5/16-24 x 3/4
7	2805850	2	KEY, PARALLEL PLN, 3/16 x 3/16 x 1-3/32
8	1960345	1	CAPSCREW, Hex Head, 3/8-24 x 2
9	1716728	2	YOKE, Cable
10	1722159	1	ARM, Pivot
11	1716702	2	PIN, Link Forward/Reverse
12	1722162	1	GUIDE, Belt Reverse
13	1924940	4	WASHER, 3/8
14	1716805	1	PULLEY, Idler Reverse
15	1916950	2	NUT, Hex Center Lock, 3/8-16
16	1716703	2	PIN, Cotter
17	1723710	1	BOLT, Flat Head, 5/16-24 x 1-1/2
18	1722160	1	PIVOT
19	1960044	3	WASHER, 5/16
20	1716766	1	V-BELT, Forward
21	1716802	2	SPRING, Idler Arm
22	1935048	3	NUT, Hex Flange Lock, 5/16-18
23	1921332	3	BOLT, Hex Flange Head, 5/16-18 x 3/4
24	1722161	1	GUIDE, Belt Forward
25	1722165	1	COVER, Belt
26	1722163	1	PULLEY, Transmission 2 Groove
27	1721525	1	WHEEL & TIRE ASSEMBLY TILLER, Left
28	1721524	1	WHEEL & TIRE ASSEMBLY TILLER, Right
29	1716776	2	PIN, Lock
30	1716803	1	PULLEY, Forward Idler
31	1722166	1	ARM, Idler Forward
32	1722168	1	SCREW, Hex Socket Shoulder, 5/16-18 x 3/8
33	1925690	1	CAPSCREW, Hex Head, 5/16-18 x 3-1/2
34	1722144	1	V-BELT, Reverse
35	1922127	4	CAPSCREW, Hex Head, 5/16-18 x 1-3/4
36	*	1	* ENGINE, 6HP B&S INTEK, 2005 - Engine Model 126412 , Engine Type 0023-E2
36	*	1	* ENGINE, 6HP B&S INTEK, 2006 - Engine Model 121212 , Engine Type 0112-E1
37	1721528	1	** BUMPER, Guard
38	1919384	1	WASHER
39	2860164	1	WASHER

Footnotes

Note* See your local Briggs & Stratton distributor for Parts & Service.

Note** The bumper guard is not standard, order the bumper guard (Ref# 37), 4 nuts (Ref# 22) and 4 capscrews (Ref# 35).

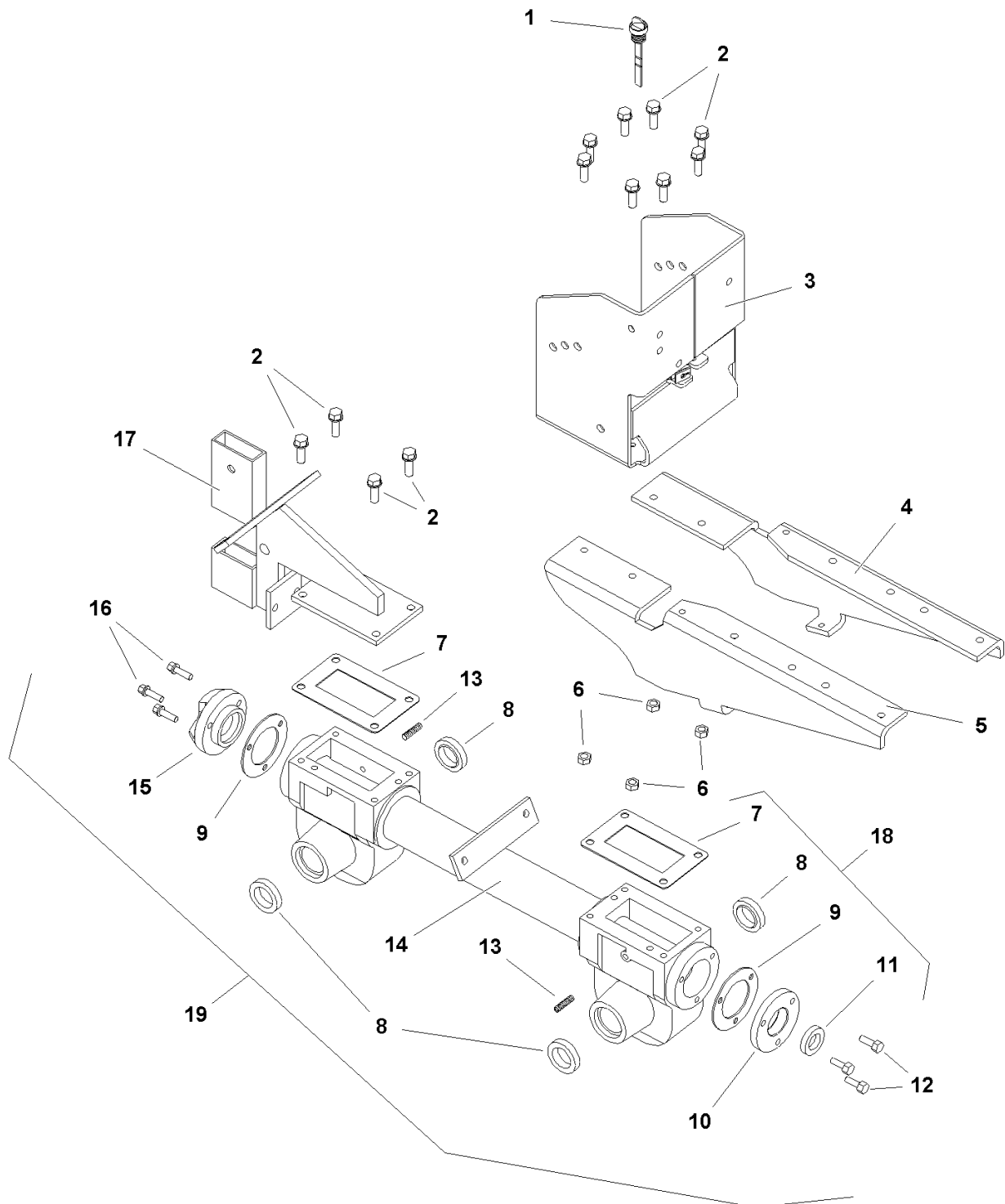
The above parts group applies to the following Mfg. Nos.:

1694161 - 6016 RT
1694908 - 6016 RT

Transmission Group

986103

NOTE: Unless noted otherwise,
use the standard hardware torque
specification chart.



The above parts group applies to the following Mfg. Nos.:

1694161 - 6016 RT

1694908 - 6016 RT

Transmission Group

REF NO	PART NO.	QTY.	DESCRIPTION
1	1723700	1	DIPSTICK
2	1921332	12	CAPSCREW, Hex Head, 5/16-18 x 3/4
3	1722327	1	COVER PLATE & MOUNT
4	1716753	1	BRACKET, Engine Mount LH
5	1716752	1	BRACKET, Engine Mount RH
6	1935048	4	NUT, Hex Flange Lock, 5/16-18
7	1716789	2	GASKET, Housing & Transmission Cover
8	1716791	4	SEAL, Housing
9	1716792	2	GASKET, Bearing Cap Front/Rear
10	1716796	1	CAP, Rear Bearing
11	1716797	1	SEAL, Oil, Drive Shaft
12	1716798	3	BOLT, Hex Flange Head, 1/4-20 x 3/4
13	1716790	2	PLUG, Pipe, Socket Head, Oil Check, 1/4-18
14	1722330	1	TRANSMISSION, Housing, Tiller Casting
15	1716793	1	CAP, Rear Bearing
16	1716795	3	BOLT, Hex Flange Head, 1/4-20 x 7/8
17	1721511	1	BRACKET, Depth Regulator RT
18	1716799	1	GASKET KIT, Oil Seal (Includes Ref. 7, 8, 9, and 11)
19	1723699	1	TRANSMISSION ASSEMBLY, Complete, w/Lockouts

Footnotes

The above parts group applies to the following Mfg. Nos.:

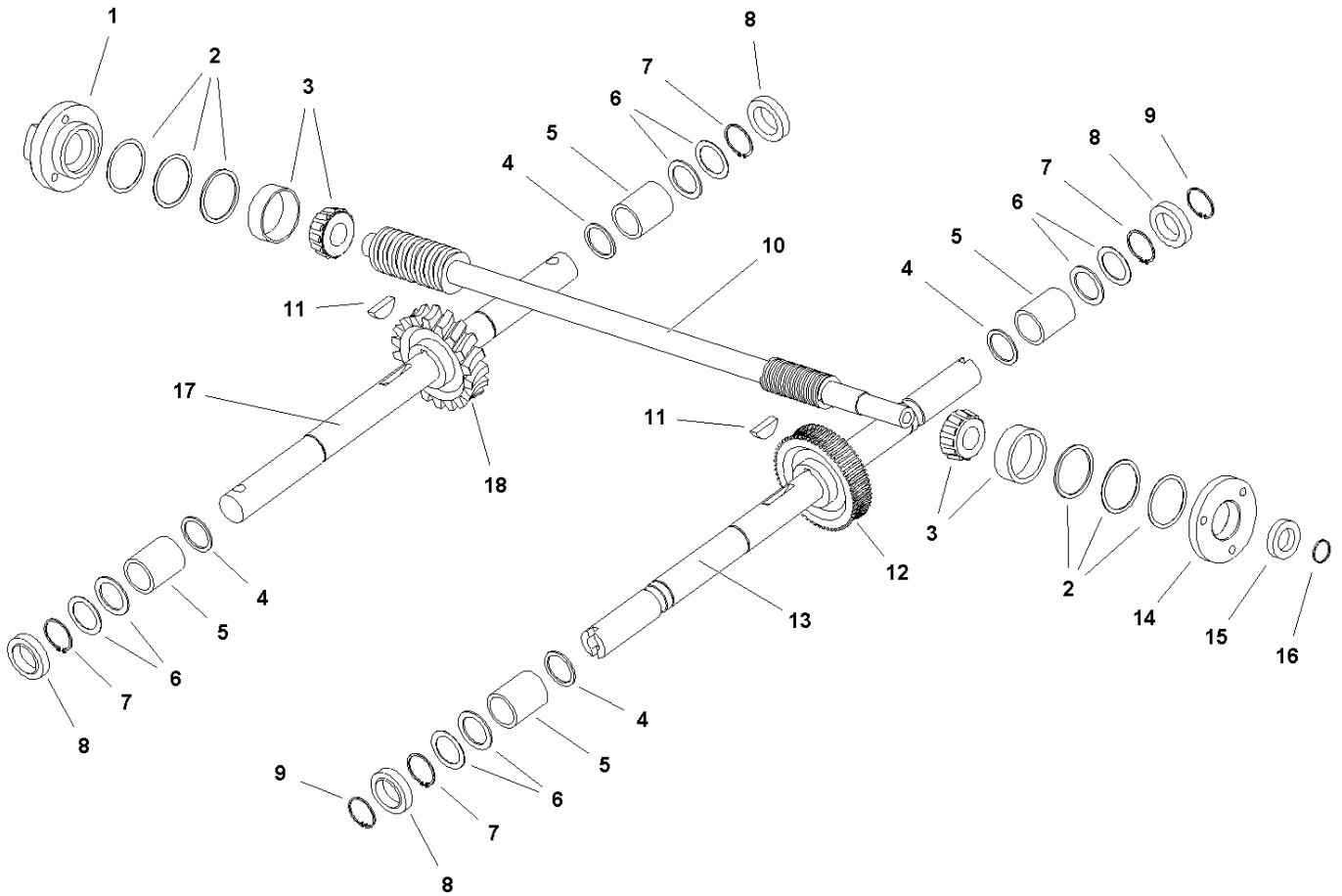
1694161 - 6016 RT

1694908 - 6016 RT

Wheel & Tiller Shaft Group

985821

NOTE: Unless noted otherwise,
use the standard hardware torque
specification chart.



The above parts group applies to the following Mfg. Nos.:

1694161 - 6016 RT

1694908 - 6016 RT

Wheel & Tiller Shaft Group

REF NO	PART NO.	QTY.	DESCRIPTION
1	1716793	1	CAP, Rear Bearing
2	1716825	1	SHIM SET, Rear Bearing Cap
2	1716826	1	SHIM, 0.062 THK1-3/4" x OD1806 (As Required)
2	1716827	1	SHIM, 0.030 THK1-3/4" x OD1807 (As Required)
2	1716828	1	SHIM, 0.015 THK1-3/4" x OD1808 (As Required)
2	1716829	1	SHIM, 0.010 THK1-3/4" x OD1809 (As Required)
3	1716810	2	BEARING, Tapered (Cone & Race)
4	1716824	4	SPACER, 1" x 1-1/4"
5	1716816	4	BUSHING
6	1716815	4	SHIM SET, Axle Spacer
6	1716817	1	SHIM, 0.062 THK1-3/8" x OD1705 (As Required)
6	1716818	1	SHIM, 0.030 THK1-3/8" x OD1706 (As Required)
6	1716819	1	SHIM, 0.015 THK1-3/8" x OD1707 (As Required)
6	1716820	1	SHIM, 0.010 THK1-3/8" x OD1708 (As Required)
7	1716830	4	RING, Snap, Internal Retainer
8	1716791	4	SEAL, Housing
9	1716821	2	RING, Snap, External Retainer
10	1722333	1	DRIVE SHAFT, Main
11	1716813	2	KEY, Parallel Plane 1/4" x 1/4" x 1"
12	1716814	1	GEAR, Worm, Wheels Shaft
13	1716811	1	SHAFT ASSEMBLY, Wheels w/Lock Pin
14	1716796	1	CAP, Rear Bearing
15	1716797	1	SEAL, Oil, Drive Shaft
16	2860164	1	WASHER, 5/8
17	1716811	1	SHAFT ASSEMBLY, Wheels w/Lock Pin
18	1716823	1	GEAR, Worm Shaft

Footnotes

The above parts group applies to the following Mfg. Nos.:

1694161 - 6016 RT
1694908 - 6016 RT

Decal Group

REF NO	PART NO.	QTY.	DESCRIPTION
1	1722551	1	DECAL, SIMPLICITY, w/Logo
2	1716734	1	DECAL, Console Forward/Reverse Instructions
3	1716747	1	DECAL, Hood, Operator Instructions Label
4	1716840	1	DECAL, Danger, Tine Hood Label
5	1723523	2	DECAL, 6016 RT
6	1716800	1	DECAL, Warning, Belt Cover

Footnotes

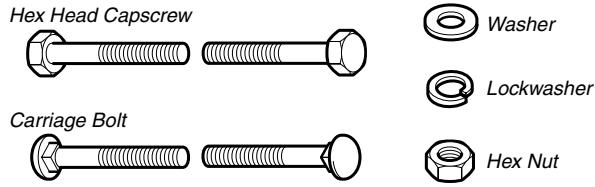
The above parts group applies to the following Mfg. Nos.:

1694161 - 6016 RT

1694908 - 6016 RT

Hardware Identification & Torque Specifications

Common Hardware Types

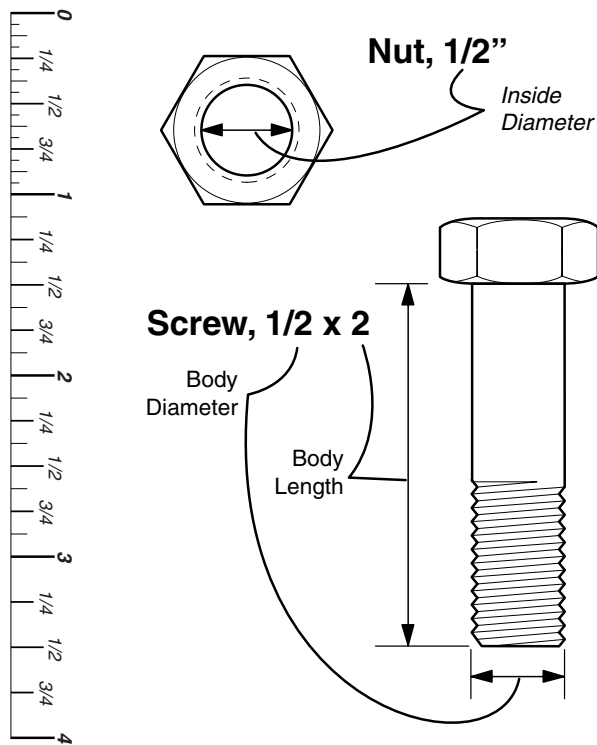


Standard Hardware Sizing

When a washer or nut is identified as 1/2", this is the *Nominal size*, meaning the *inside diameter* is 1/2 inch; if a second number is present it represents the *threads per inch*

When bolt or capscrew is identified as 1/2 - 16 x 2", this means the *Nominal size*, or *body diameter* is 1/2 inch; the second number represents the *threads per inch* (16 in this example, and the final number is the *body length* of the bolt or screw (in this example 2 inches long).

The guides and ruler furnished below are designed to help you select the appropriate hardware and tools.



Torque Specification Chart

FOR STANDARD MACHINE HARDWARE (Tolerance ± 20%)

Hardware Grade	No Marks SAE Grade 2		SAE Grade 5		SAE Grade 8	
	in/lbs ft/lbs	Nm.	in/lbs ft/lbs	Nm.	in/lbs ft/lbs	Nm.
8-32	19	2.1	30	3.4	41	4.6
8-36	20	2.3	31	3.5	43	4.9
10-24	27	3.1	43	4.9	60	6.8
10-32	31	3.5	49	5.5	68	7.7
1/4-20	66	7.6	8	10.9	12	16.3
1/4-28	76	8.6	10	13.6	14	19.0
5/16-18	11	15.0	17	23.1	25	34.0
5/16-24	12	16.3	19	25.8	27	34.0
3/8-16	20	27.2	30	40.8	45	61.2
3/8-24	23	31.3	35	47.6	50	68.0
7/16-14	30	40.8	50	68.0	70	95.2
7/16-20	35	47.6	55	74.8	80	108.8
1/2-13	50	68.0	75	102.0	110	149.6
1/2-20	55	74.8	90	122.4	120	163.2
9/16-12	65	88.4	110	149.6	150	204.0
9/16-18	75	102.0	120	163.2	170	231.2
5/8-11	90	122.4	150	204.0	220	299.2
5/8-18	100	136	180	244.8	240	326.4
3/4-10	160	217.6	260	353.6	386	525.0
3/4-16	180	244.8	300	408.0	420	571.2
7/8-9	140	190.4	400	544.0	600	816.0
7/8-14	155	210.8	440	598.4	660	897.6
1-8	220	299.2	580	788.8	900	1,244.0
1-12	240	326.4	640	870.4	1,000	1,360.0

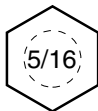
NOTES

- These torque values are to be used for all hardware excluding: locknuts, self-tapping screws, thread forming screws, sheet metal screws and socket head setscrews.
- Recommended seating torque values for locknuts:
 - for prevailing torque locknuts - use 65% of grade 5 torques.
 - for flange whizlock nuts and screws - use 135% of grade 5 torques.
- Unless otherwise noted on assembly drawings, all torque values must meet this specification.

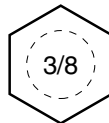
Wrench & Fastener Size Guide



1/4" Bolt or Nut
Wrench—7/16"



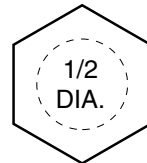
5/16" Bolt or Nut
Wrench—1/2"



3/8" Bolt or Nut
Wrench—9/16"



7/16" Bolt or Nut
Wrench (Bolt)—5/8"
Wrench (Nut)—11/16"



1/2" Bolt or Nut
Wrench—3/4"

Simplicity

MANUFACTURING, INC.
500 N. Spring Street / PO Box 997
Port Washington, WI 53074-0997 USA

www.simplicitymfg.com

© Copyright 2005 Simplicity Manufacturing, Inc.
All Rights Reserved. Printed In USA.

