

Attachment Illustrated Parts List



Attachment

Mfg. No.	Description
1694403	46" Single-Stage Snowthrower

Simplicity

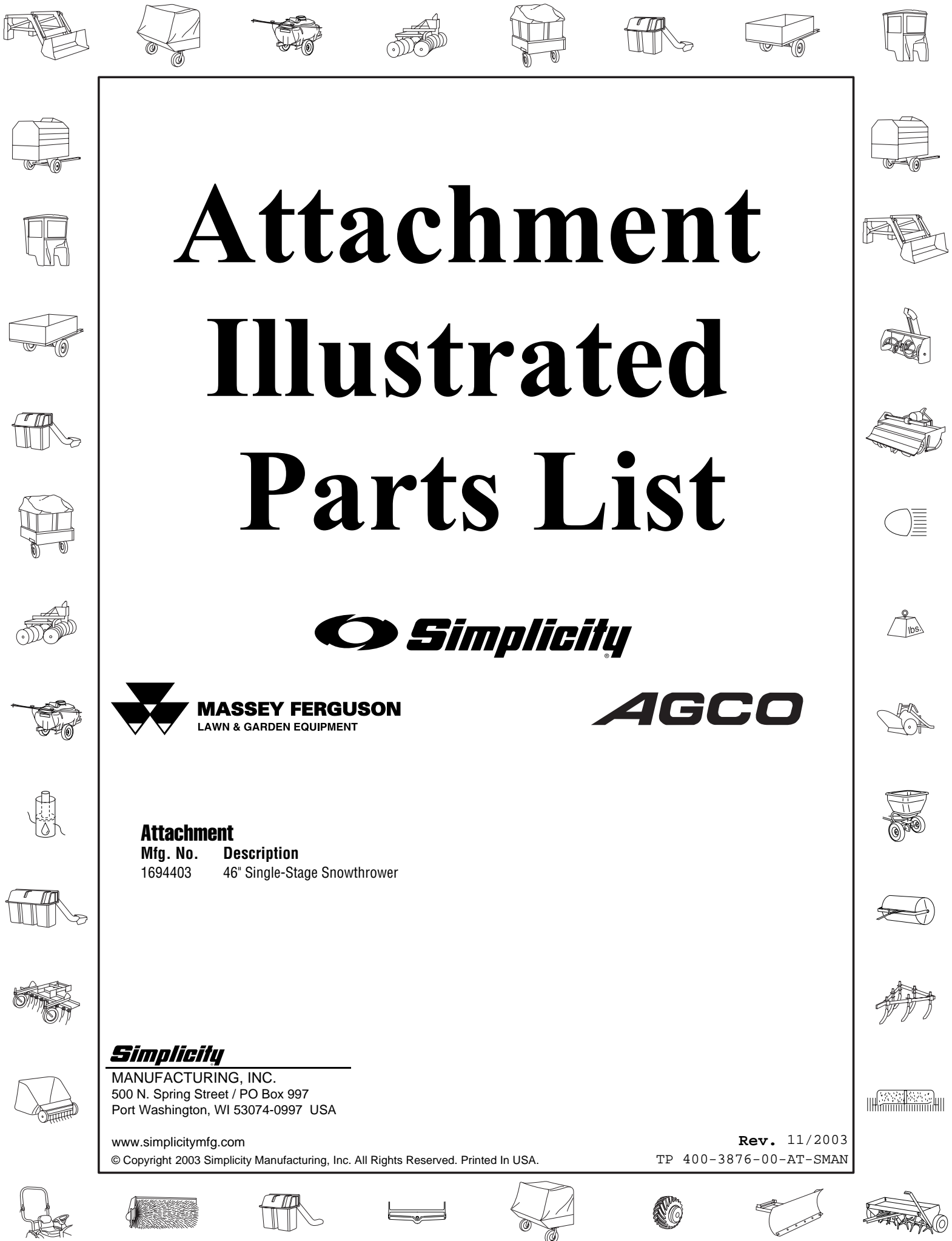
MANUFACTURING, INC.
500 N. Spring Street / PO Box 997
Port Washington, WI 53074-0997 USA

www.simplicitymfg.com

© Copyright 2003 Simplicity Manufacturing, Inc. All Rights Reserved. Printed In USA.

Rev. 11/2003

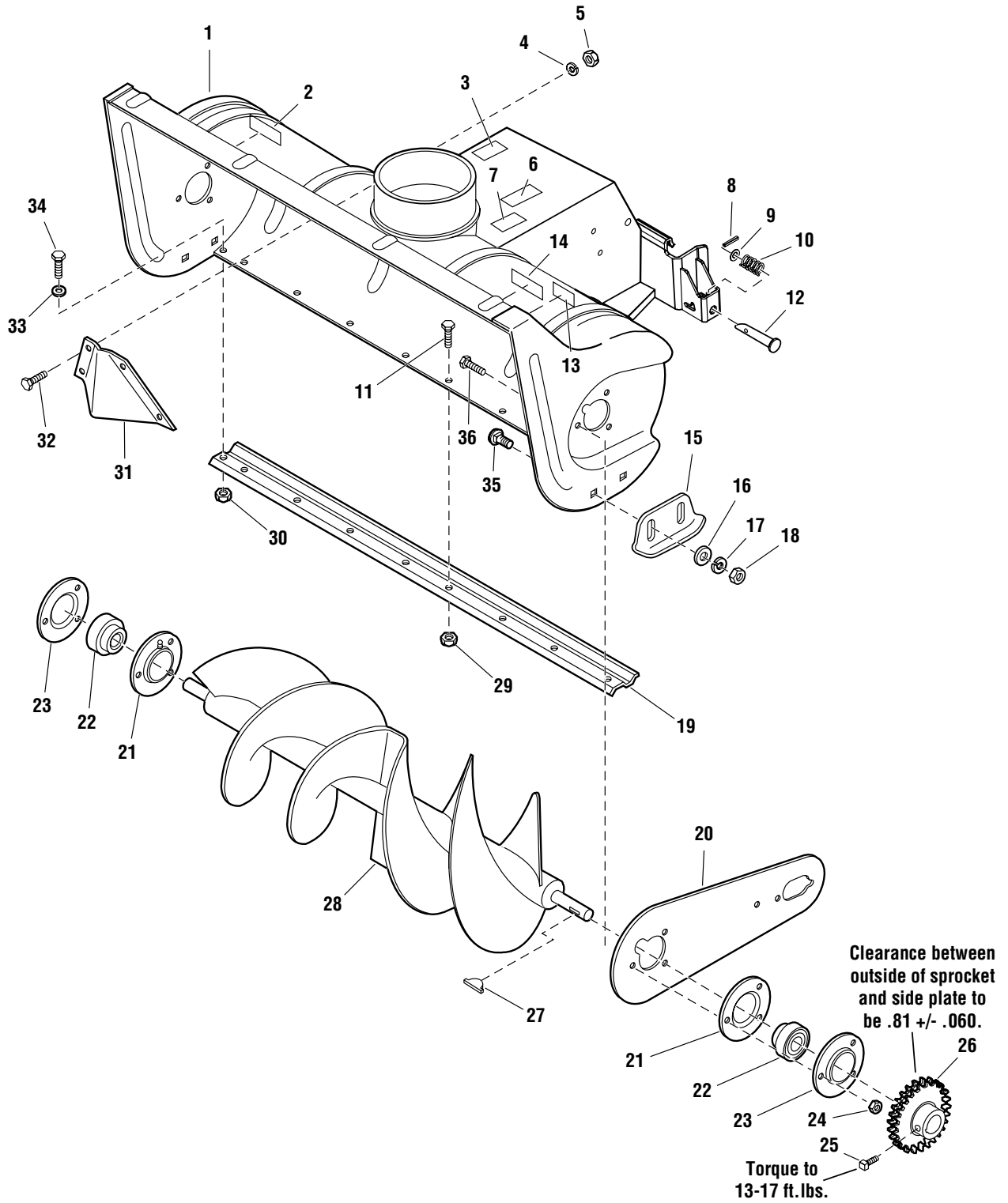
TP 400-3876-00-AT-SMAN



Body & Rotor Group

986350

NOTE: Unless noted otherwise, use the standard hardware torque specification chart.



The above parts group applies to the following Mfg. Nos.:
1694403 - 46" Single-Sta

Body & Rotor Group

REF NO.	PART NO.	QTY.	DESCRIPTION
1	1725174	1	BODY & FRAME ASSEMBLY
2	1716540	1	DECAL, Caution, Rear Wheel Weights Required
3	1722674		DECAL, Caution, Spring Tension
4	1917356	5	LOCKWASHER, 5/16
5	1917372	5	NUT, Hex, 5/16-18
6	*	1	DECAL, OPEI, Not Serviced
7	*	1	DECAL, Model Number & Serial Number, Not Serviced
8	916171	2	PIN, Spring
9	1924366	2	WASHER, 5/8
10	1709660	2	SPRING, Compression
11	1921959	8	CAPSCREW, Hex Head, 1/4-20 x 5/8
12	1709659	2	PIN, Flat Head Drilled
13	1716532	1	DECAL, Danger Auger
14	1716531	1	DECAL, Caution
15	1713424	2	SKID & WEAR ASSEMBLY
16	1924940	4	WASHER, 5/16
17	1916965	4	LOCKWASHER, 3/8
18	1916950	4	NUT, Hex, 3/8-16
19	1717472	1	BLADE, Scraper, 46"
20	1676632	1	PLATE, Side
21	172279	2	FLANGE, Bearing
22	173934	2	BEARING
23	172278	2	FLANGE, Bearing
24	1935048	6	NUT, Hex Flange Lock, 5/16-18
25	1677029	2	SCREW, Set, Hex Socket Head, Cup Point, 5/16-18 x 3/8
26	1676721	1	SPROCKET ASSEMBLY
27	905126	1	KEY
28	1721842	1	ROTOR ASSEMBLY, 46"
29	1923358	8	NUT, Hex Centerlock, 1/4-20
30	1923362	2	NUT, Hex Centerlock, 5/16-18
31	106774	1	DEFLECTOR
32	1925205	4	CAPSCREW, Hex Head, 5/16-18 x 5/8
33	1919326	2	WASHER
34	1921332	2	CAPSCREW, Hex Head, 5/16-18 x 3/4
35	1931348	4	CARRIAGE BOLT, 3/8-16 x 3/4
36	1923325	6	CAPSCREW, Hex Head, 5/16-18 x 7/8

Footnotes

* Not a service part.

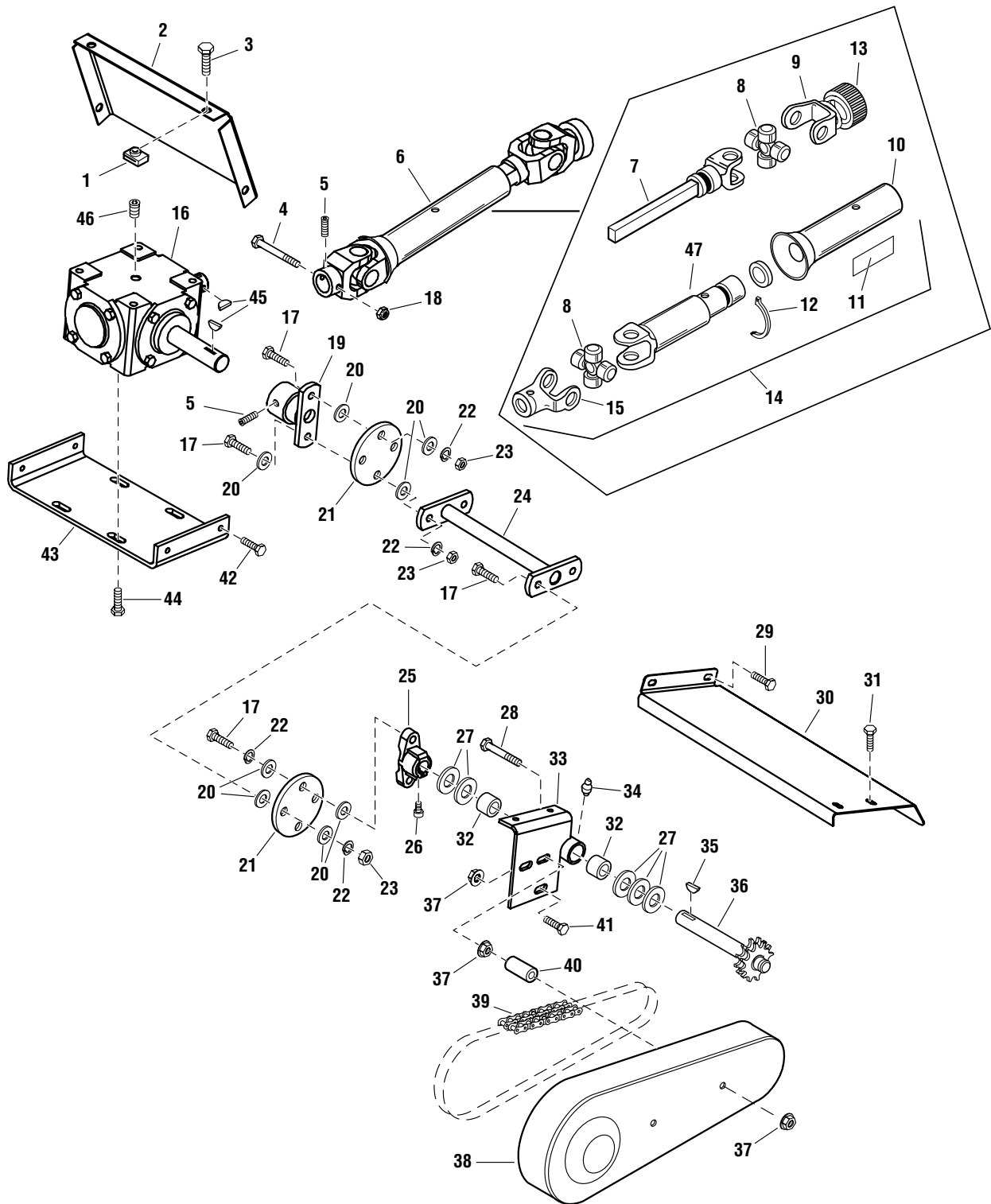
The above parts group applies to the following Mfg. Nos.:

1694403 - 46" Single-Sta

Drive Group

986352

NOTE: Unless noted otherwise,
use the standard hardware torque
specification chart.



The above parts group applies to the following Mfg. Nos.:
1694403 - 46" Single-Sta

Drive Group

REF NO.	PART NO.	QTY.	DESCRIPTION
1	1960368	4	NUT, Speed, 1/4-20
2	1725178	1	COVER, Rear
3	1960295	4	CAPSCREW, Hex Head, Wiz Lock, 1/4-20 x 5/8
4	1921963	1	CAPSCREW, Hex Head, 1/4-20 x 2
5	1930540	2	SCREW, Set, Square Head, Cup Point, 5/16-18 x 5/8
6	1717484	1	DRIVE SHAFT ASSEMBLY (Includes Ref. Nos. 7-15)
7	1718837	1	YOKE & SHAFT ASSEMBLY
8	1679003	1	CROSS & BEARING KIT
9	1709350	1	YOKE ASSEMBLY, Spring-Lock
10	1709355	1	GUARD, Outer
11	*	1	DECAL, Warning, Drive Shaft
12	1709352	1	REPAIR KIT, Nylon
13	1718475	1	REPAIR KIT, Spring Lock
14	1709348	1	JOINT & TUBE ASSEMBLY, w/Guard (Includes Ref. Nos. 8, 10, 12, & 15)
15	1716877	1	YOKE
16	1725256	1	GEARBOX
17	1920415	8	CAPSCREW, Hex Head, 3/8-16 x 1-1/4
18	1920397	1	NUT, Hex, Lock ESNA Light, 1/4-20
19	1676561	1	COUPLER ASSEMBLY, Drive
20	157424	16	WASHER, Special, 3/8
21	173026	2	COUPLING
22	1916965	16	WASHER, Lock, 3/8
23	1916950	6	NUT, Hex, 3/8-16
24	1725499	1	SHAFT & BAR ASSEMBLY
25	154198	1	FLANGE, Drive Shaft
26	1960475	1	SETSCREW, Hex Socket, 3/8-24 x 3/8
27	168111	5	WASHER, Hardened, Thrust
28	1960244	2	CAPSCREW, Hex Head, Whiz Lock, 3/8-16 x 2-3/4
29	1925003	2	CAPSCREW, Hex Head, Taptite, 1/4-20 x 1/2
30	1725177	1	COVER, Drive Shaft
31	1924856	4	CAPSCREW, Hex Head, Taptite, 5/16-18 x 1/2
32	1679211	2	BEARING, Needle
33	1676554	1	SUPPORT ASSEMBLY, w/Bearings (Includes Ref. No. 32)
34	921133	1	FITTING, Grease, 1/4
35	905123	1	KEY, Woodruff #9
36	1676722	1	SHAFT ASSEMBLY, 12 Teeth (Drive, Chain)
37	1928352	10	NUT, Hex Flange Whiz Lock, 3/8-16
38	1676738	1	GUARD, Chain
39	1676739	1	CHAIN, Roller, #40 - 32" Long
40	1669105	2	SPACER

Footnotes

* Not a service part.

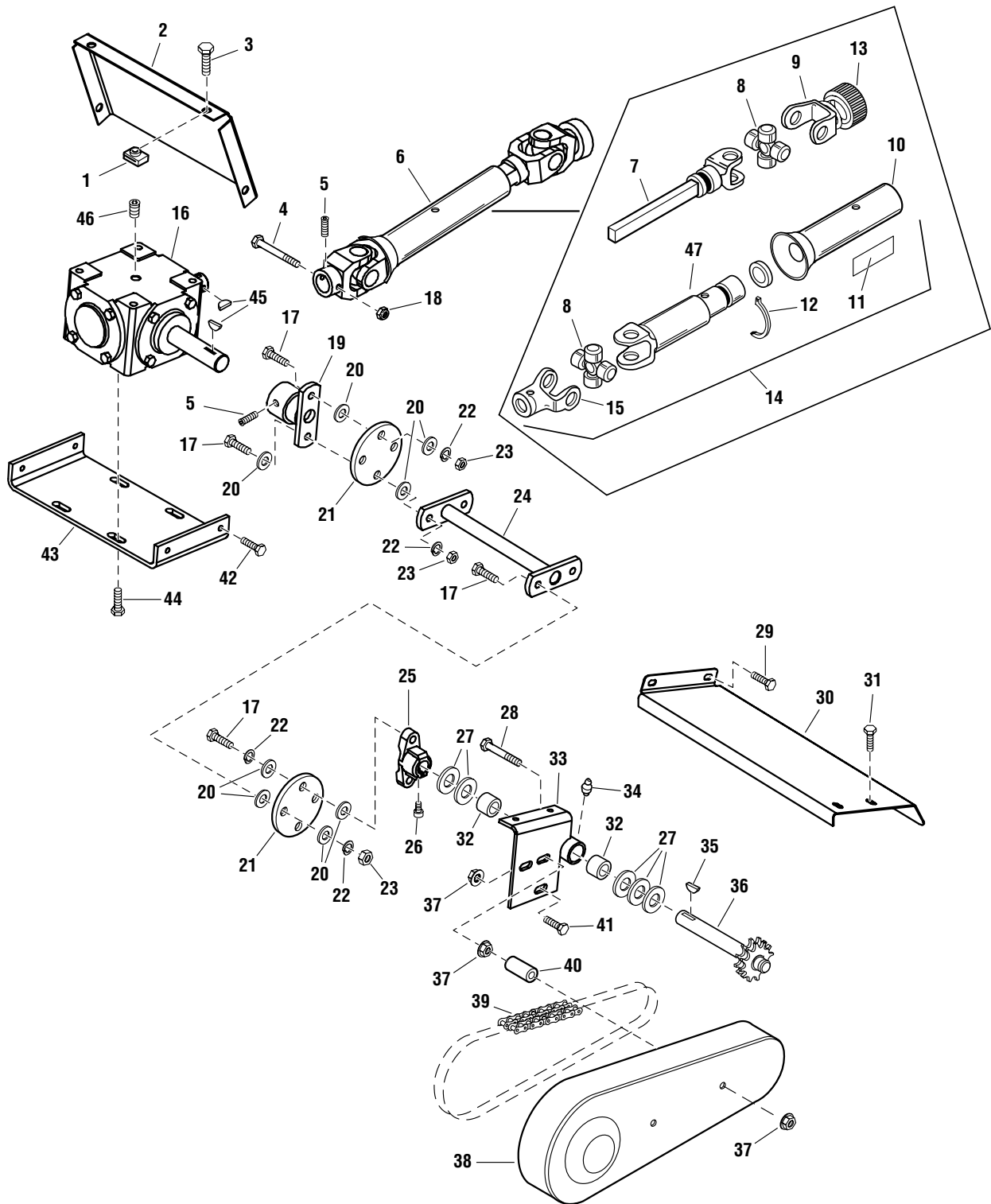
The above parts group applies to the following Mfg. Nos.:

1694403 - 46" Single-Sta

Drive Group

986352

NOTE: Unless noted otherwise,
use the standard hardware torque
specification chart.



The above parts group applies to the following Mfg. Nos.:
1694403 - 46" Single-Sta

Drive Group

REF NO.	PART NO.	QTY.	DESCRIPTION
41	1934654	2	CAPSCREW, Hex Head, Whiz Lock, 3/8-16 x 1
42	1960541	4	CAPSCREW, Hex Head, Wash Head Taptite, 5/16-18 x 3/4
43	1725180	1	PLATE, Mounting
44	1933260	4	CAPSCREW, Hex Head, Wiz Flange Lock, 3/8-16 x 3/4
45	922138	2	KEY, Hi-Pro #HP708, 1/4
46	1716790	1	PLUG, Socket Head
47	1709357	1	YOKE, TUBE & SLIP SLEEVE

Footnotes

* Not a service part.

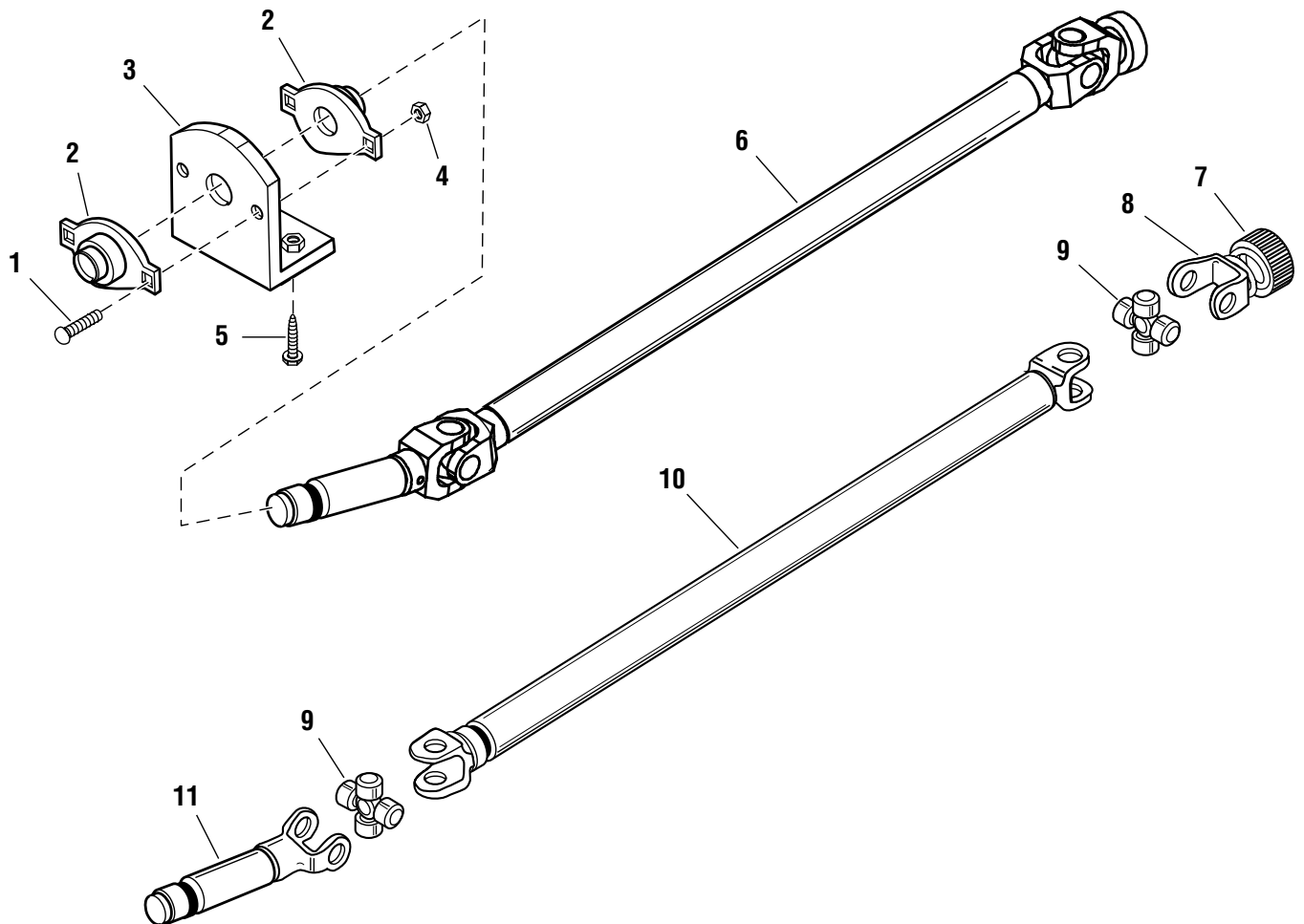
The above parts group applies to the following Mfg. Nos.:

1694403 - 46" Single-Sta

Front PTO Group

986353

NOTE: Unless noted otherwise,
use the standard hardware torque
specification chart.



The above parts group applies to the following Mfg. Nos.:
1694403 - 46" Single-Sta

Front PTO Group

REF NO.	PART NO.	QTY.	DESCRIPTION
1	1931335	2	CARRIAGE BOLT, 5/16-18 x 1
2	1715419	2	BALL BEARING W/FLANGE
3	1725257	1	PLATE & NUT ASSEMBLY
4	1919438	2	NUT, Hex, Lock ESNA Light, 5/16-18
5	1933260	2	CAPSCREW, Hex Head, Whiz Lock, 3/8-16 x 3/4
6	1725023	1	DRIVE SHAFT ASSEMBLY
7	1685480	1	SPRING LOCK REPAIR KIT
8	1709350	1	YOKE ASSEMBLY, Spring Lock
9	1679003	2	CROSS & BEARING KIT
10	1725451	1	DRIVE SHAFT CENTER
11	1725452	1	YOKE & SPINDLE ASSEMBLY

Footnotes

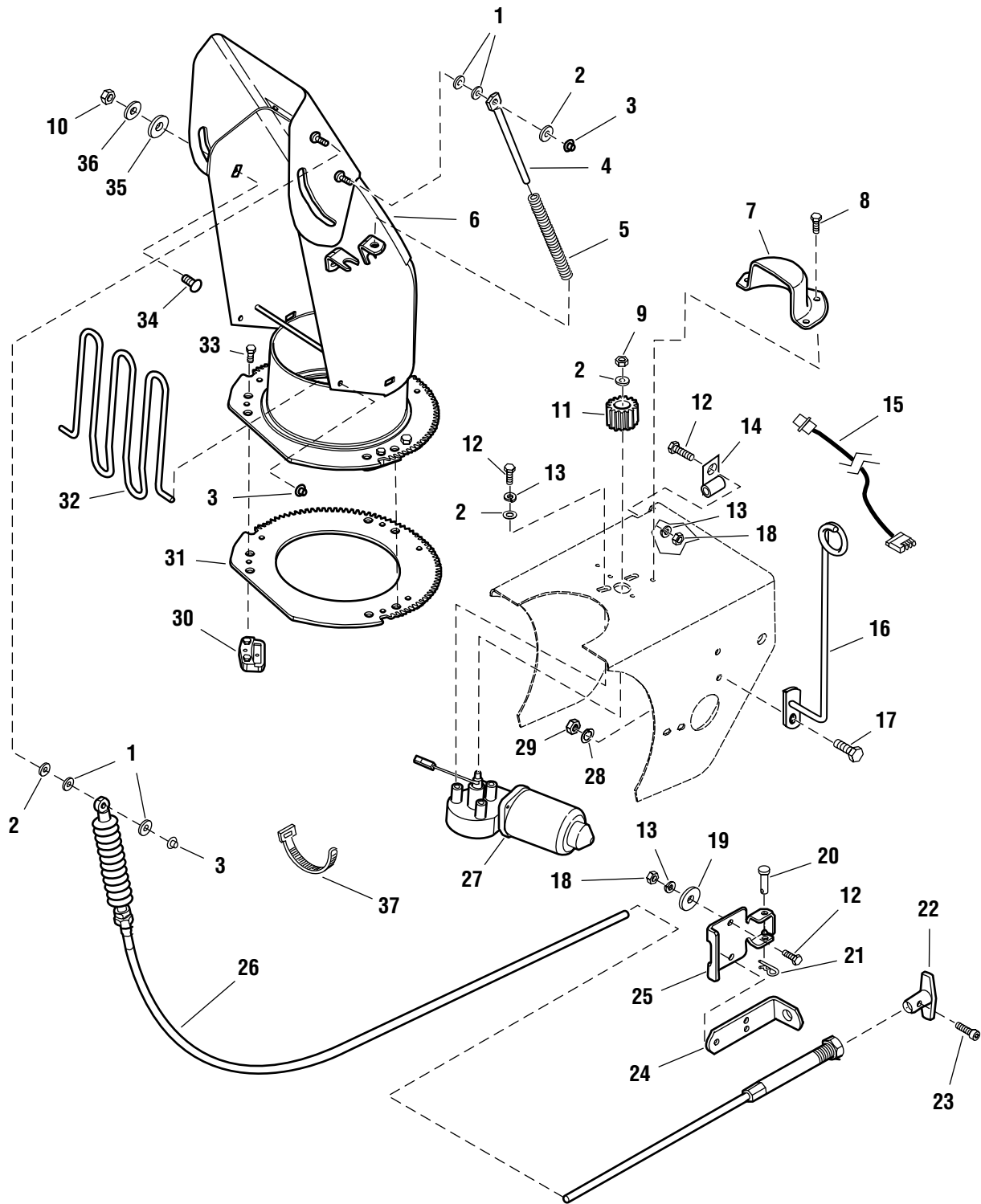
The above parts group applies to the following Mfg. Nos.:

1694403 - 46" Single-Sta

Spout Group

986351

NOTE: Unless noted otherwise,
use the standard hardware torque
specification chart.



The above parts group applies to the following Mfg. Nos.:
1694403 - 46" Single-Sta

Spout Group

REF NO.	PART NO.	QTY.	DESCRIPTION
1	1702219	4	SPACER
2	1921319	9	WASHER, 1/4
3	1960126	4	NUT, Push, 1/4
4	1611945	1	ROD
5	1611939	1	SPRING
6	1721601	1	CHUTE & DEFLECTOR ASSEMBLY
7	1717481	1	COVER, Pinion
8	1925003	3	SCREW, Hex Head, Taptite, 1/4-20 x 1/2
9	1923358	1	NUT, Hex, Centerlock, 1/4-20
10	1919438	1	NUT, Hex Lock ESNA 5/16-18
11	1724604	1	PINION, 15 Teeth
12	1924009	6	CAPSCREW, Hex Head, 1/4-20 x 7/8
13	1916964	6	LOCKWASHER, 1/4
14	1708008	1	CLAMP, Wire
15	1717483	1	HARNESS ASSEMBLY
16	1717591	1	ROD & BAR ASSEMBLY
17	1921333	1	CAPSCREW, Hex Head, 5/16-18 x 1
18	1916622	3	NUT, Hex, 1/4-20
19	1960151	2	WASHER, 1/4
20	1668344	1	PIN, Flat Head Drilled
21	1960221	1	CLIP, Hair Pin
22	1715799	1	HANDLE "T"
23	1930547	1	SCREW, Set Hex #10-24 x 3/8
24	1705920	1	BRACKET
25	1721590	1	BRACKET
26	1717482	1	CABLE & KNOB ASSEMBLY
27	1715885	1	MOTOR, Electric
28	1917356	1	LOCKWASHER, 5/16
29	1917372	1	NUT, Hex, 5/16-18
30	1725454	3	PLATE, Hold Down
31	1717477	1	GEAR
32	1704446	1	GUARD & SUPPORT ASSEMBLY
33	1960683	3	CAPSCREW, Hex Head, Taptite, #10-24 x 7/8
34	1931333	1	CARRIAGE BOLT, 5/16-18 x 3/4
35	960210	1	WASHER
36	1919326	1	WASHER, 5/16
37	1701011	1	TIE, Cable

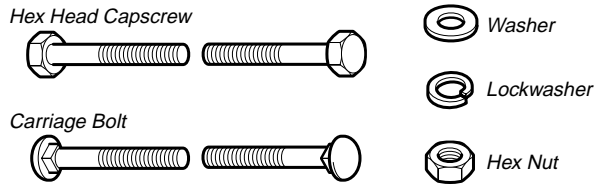
Footnotes

The above parts group applies to the following Mfg. Nos.:

1694403 - 46" Single-Sta

Hardware Identification & Torque Specifications

Common Hardware Types

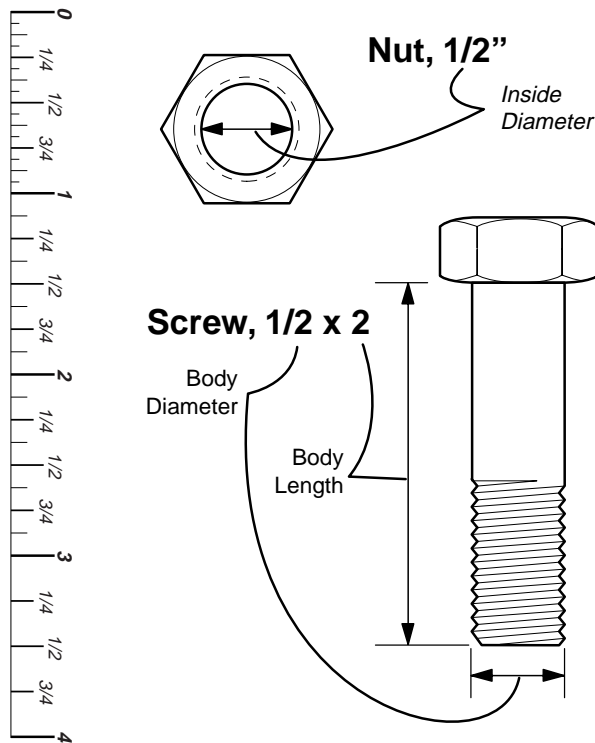


Standard Hardware Sizing

When a washer or nut is identified as $1/2''$, this is the *Nominal size*, meaning the *inside diameter* is $1/2$ inch; if a second number is present it represent the *threads per inch*

When bolt or capscrew is identified as $1/2 - 16 \times 2''$, this means the *Nominal size*, or *body diameter* is $1/2$ inch; the second number represents the *threads per inch* (16 in this example, and the final number is the *body length* of the bolt or screw (in this example 2 inches long).

The guides and ruler furnished below are designed to help you select the appropriate hardware and tools.



Torque Specification Chart						
FOR STANDARD MACHINE HARDWARE (Tolerance $\pm 20\%$)						
Hardware Grade	No Marks SAE Grade 2		SAE Grade 5		SAE Grade 8	
	in/lbs ft/lbs	Nm.	in/lbs ft/lbs	Nm.	in/lbs ft/lbs	Nm.
8-32	19	2.1	30	3.4	41	4.6
8-36	20	2.3	31	3.5	43	4.9
10-24	27	3.1	43	4.9	60	6.8
10-32	31	3.5	49	5.5	68	7.7
1/4-20	66	7.6	8	10.9	12	16.3
1/4-28	76	8.6	10	13.6	14	19.0
5/16-18	11	15.0	17	23.1	25	34.0
5/16-24	12	16.3	19	25.8	27	34.0
3/8-16	20	27.2	30	40.8	45	61.2
3/8-24	23	31.3	35	47.6	50	68.0
7/16-14	30	40.8	50	68.0	70	95.2
7/16-20	35	47.6	55	74.8	80	108.8
1/2-13	50	68.0	75	102.0	110	149.6
1/2-20	55	74.8	90	122.4	120	163.2
9/16-12	65	88.4	110	149.6	150	204.0
9/16-18	75	102.0	120	163.2	170	231.2
5/8-11	90	122.4	150	204.0	220	299.2
5/8-18	100	136	180	244.8	240	326.4
3/4-10	160	217.6	260	353.6	386	525.0
3/4-16	180	244.8	300	408.0	420	571.2
7/8-9	140	190.4	400	544.0	600	816.0
7/8-14	155	210.8	440	598.4	660	897.6
1-8	220	299.2	580	788.8	900	1,244.0
1-12	240	326.4	640	870.4	1,000	1,360.0

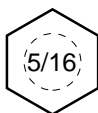
NOTES

- These torque values are to be used for all hardware excluding: locknuts, self-tapping screws, thread forming screws, sheet metal screws and socket head setscrews.
- Recommended seating torque values for locknuts:
 - for prevailing torque locknuts - use 65% of grade 5 torques.
 - for flange whizlock nuts and screws - use 135% of grade 5 torques.
- Unless otherwise noted on assembly drawings, all torque values must meet this specification.

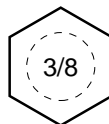
Wrench & Fastener Size Guide



1/4" Bolt or Nut
Wrench— $7/16''$



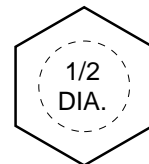
5/16" Bolt or Nut
Wrench— $1/2''$



3/8" Bolt or Nut
Wrench— $9/16''$



7/16" Bolt or Nut
Wrench (Bolt)— $5/8''$
Wrench (Nut)— $11/16''$



1/2" Bolt or Nut
Wrench— $3/4''$