

How to use this file...(Installation Instruction Sheets)

Instructions for **Print Vendors (Paper Manuals)**

- Paper:**
- * Finish Size is 8-1/2 x 11
 - * Body—50 lbs brilliant white offset or equivalent.
- Press:**
- * Body—1-color, 2-sided
- Bindery:**
- * If document is 1 or 2 pages, run as 8-1/2 x 11 sheets.
 - * If document is 3 or 4 pages, and **can be run as 2 sided 11 x 17** -- then fold to 8-12 - 11.
 - * If document is MORE than 4 pages, run as 8-1/2 x 11 sheets with UL Corner Stitch.
- COVERS:**
- * This document is a self-covered piece.
 - Check the last page of the document for the individual document number (a TP 200-XXXX-XX-XX-SMA number).
- BODY:**
- * REMEMBER: ODD number pages are ALWAYS right hand pages, and EVEN number are ALWAYS left hand pages.
- General:**
- * **This instruction page is NOT part of the document and must NOT be printed.**
 - Pages labeled with the text "THIS PAGE INTENTIONALLY BLANK" are placement pages ONLY, and should NOT be printed.
-

If you have further questions on how to utilize this file, please contact
Simplicity Technical Publications Department at (414) 284-8650.

Installation Instructions

Update Kit For 520 Series & Snow Tackler™ Single Stage Snowthrowers

Extended reliability and durability testing of the new 520 single stage snowthrowers indicates that the life of the auger drive system is significantly improved by doubling the material used in the auger center section.

Based on these test results, we have added a second center section to the auger, and a support strap to the auger housing on all units produced during and after October 1997.

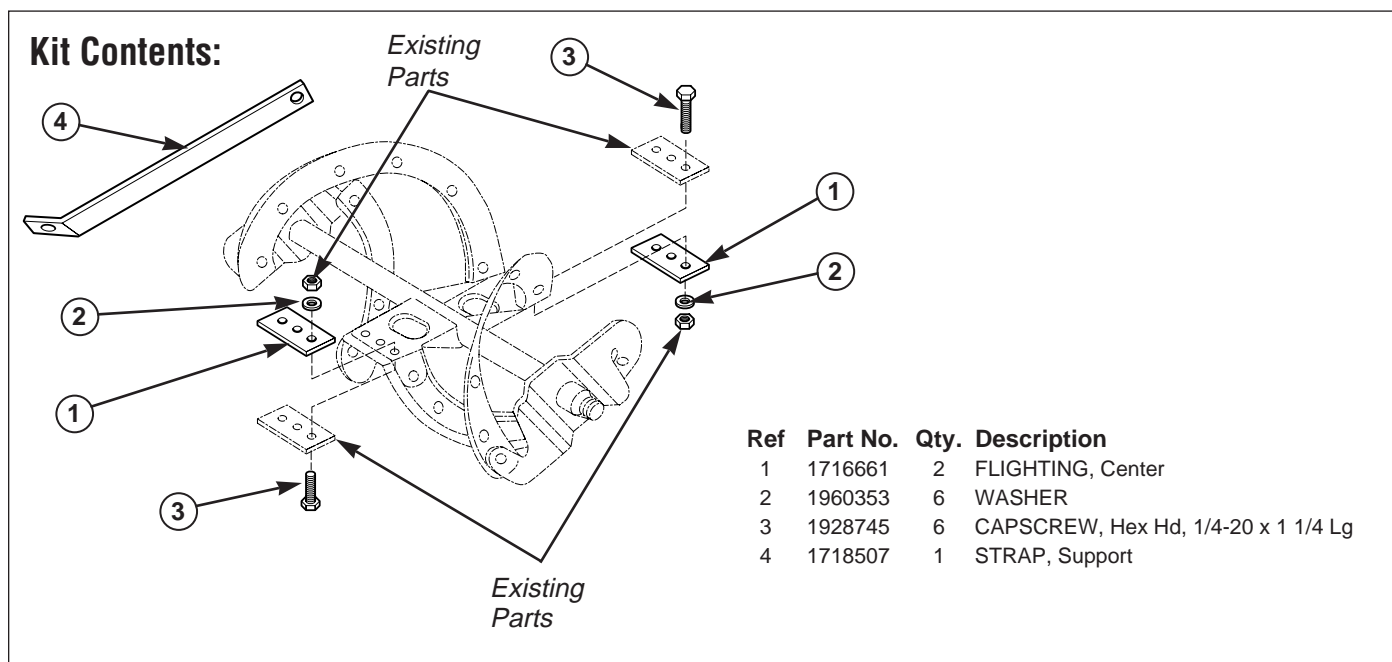
Because the auger drive performance is significantly improved by these enhancements, we desire to have ALL units updated to include these enhancements.

Please update all units in your stock, and contact all customers to whom you have delivered a 520 or Snow Tackler (They may bring the unit in for you to update, or they may perform the update themselves — it is a simple 15 minute procedure.)

And remember to inform your customers that these double center sections can be reversed to extend drive life even further.

UNITS AFFECTED:

Mfg. No.	Description
1692614	520E Compact Snowthrower
1692917	520M Compact Snowthrower
1692918	520E Compact Snowthrower
1693166	520M Compact Snowthrower (Export)
1692977	Green Bay Packers Snowthrower
1692978	Minnesota Vikings Snowthrower
1692979	Chicago Bears Snowthrower
1692980	Detroit Lions Snowthrower
1692981	Pittsburgh Steelers Snowthrower
1692984	New England Patriots Snowthrower
1692985	New York Jets Snowthrower
1692986	St. Louis Rams Snowthrower
1692991	Cleveland Browns Snowthrower
1692992	New York Giants Snowthrower



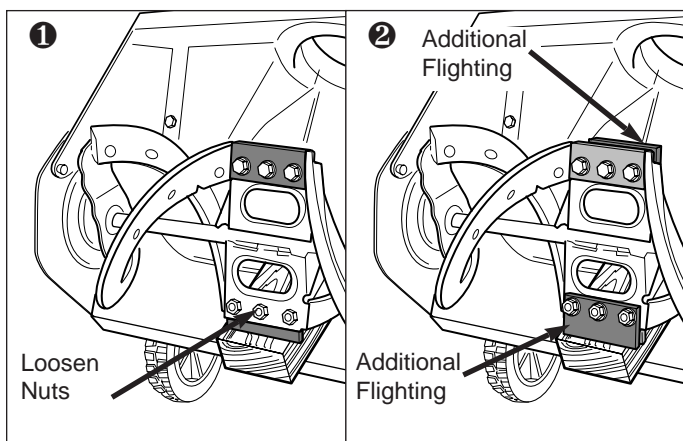


Figure 1. Flighting Installation

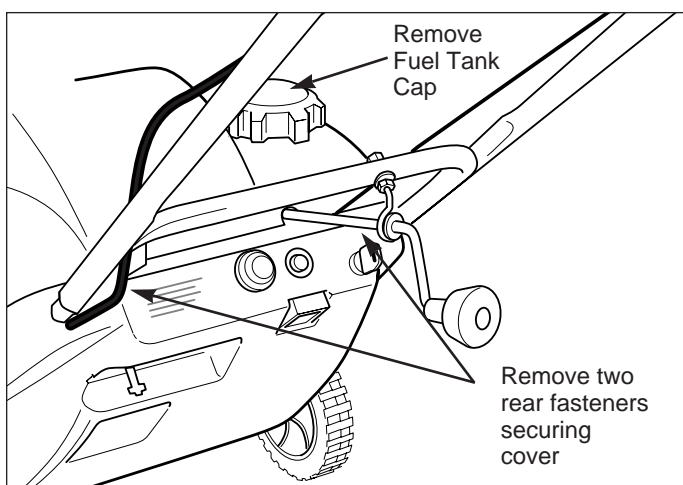


Figure 2. Remove and/or loosen Cover Screws

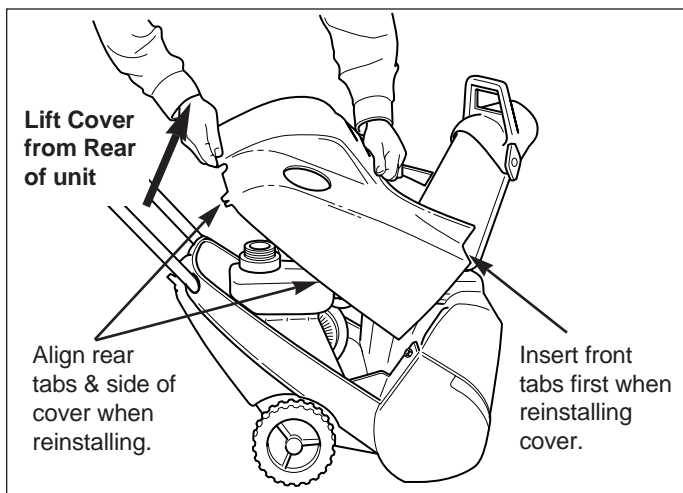


Figure 3. Cover Removal & Installation

Install Flighting

① Step One — Loosen the nuts securing the three bolts which hold the center flighting onto the auger. retain the nuts and lockwashers, but discard the bolts.

② Step Two — See Kit Contents Illustration on page 1. Position the ADDITIONAL center flights on the OPPOSITE SIDE from the existing flighting. Attach these to the auger with the the new bolts provided. Secure the flights with the nuts and lockwashers from step 1.

Remove Cover

③ Step Three — remove the cover as follows:

- Remove the Engine Key from the switch.
- Remove the two rear fasteners securing the back of the cover housing. (Figure 2).
- Remove the fuel tank cap.
- Remove the cover (see Figure 3).
- Temporarily reinstall the fuel tank cap.

Install Support Strap

④ Step Four —See Figure 4. Loosen and remove the capscrews at locations (A) and (B). Retain the hardware.

⑤ Step Five — Attach the support strap supplied in this kit as shown in Figure 4. The strap is attached to the outside of the handle at locat (A), and ont top of the housing at location (B). Secure with the capscrews, lockwashers, and nuts saved from Step 4.

Reinstall Cover

⑥ Step Six — Reinstall the cover by reversing the removal steps. *Make certain that the tabs at the lower front of the cover are positioned correctly, and that the cover is properly seated.*

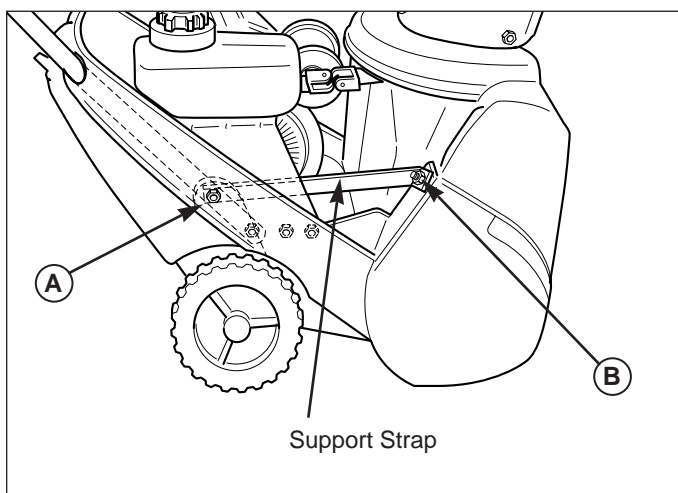


Figure 4. Support Strap Installation

Simplicity

MANUFACTURING, INC.

500 N Spring Street / PO Box 997
Port Washington, WI 53074-0997 USA

1718357

Rev. 11/97

© 1997 Simplicity Manufacturing, Inc. All Rights Reserved
TP 200-2121-01-SK-S