

WALK BEHIND SNOWTHROWER PARTS MANUAL

Simplicity Sno-Away Models 5-55 & 7-55

5 HP Models

Mfg. No. 1691411

Serial No. 6137 & Up

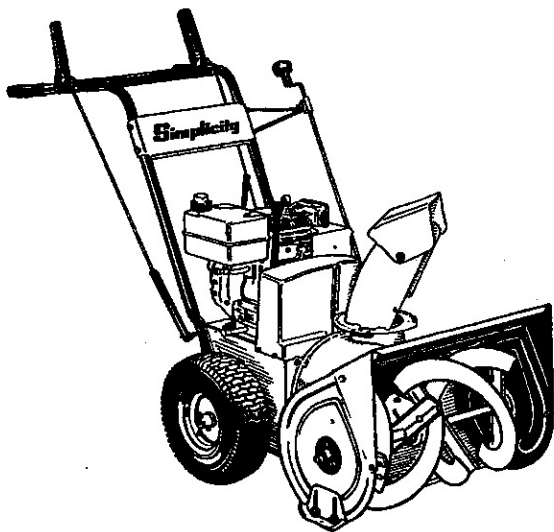
7 HP Models

Mfg. No. 1691413

Serial No. 13781 & Up

Mfg. No. 1691414 (Export)

Serial No. 2000 & Up



Product Identification:

When ordering parts, keep your products serial number and manufacturer's number in mind. Variations may occur in a part between early & later model products, causing the product serial number to be listed in the parts description whenever these variations occur.

Record your I.D. numbers here for quick, future reference.

Product Mfg. No. _____ S/N _____ Mower Mfg. No. _____ S/N _____

Attention:

Standard torques appear in a chart at the end of the manual, while important individual torques are given on specific parts drawings.

CRITICAL and MAJOR notations point out important facts or instructions which relate to personal safety and proper machine operation. Any CRITICAL notation **C** which may appear in this book, pinpoints characteristics which, if not properly followed, can create a safety hazard. Any MAJOR notation **M** which may appear in this book, marks characteristics which, if not properly followed, may result in operating failure, shortened product life, or greatly reduced quality of the unit. For your convenience, assembly notes are included in parts drawings to assist in repair and assembly of unit.

SIMPLICITY BRAND PRODUCTS**OILS - SPECIFICALLY BLENDED OF HIGH QUALITY BASE OILS & ADDITIVES.**

Special Worm Gear Oil: Required for protection of brass gears and mating parts.

- Cold Weather Worm Gear Oil for snowthrowers with worm gear drive. 8 Oz. Bottle, Part #1704536, Case of 12-8 Oz. Bottles, Part #1685406.

Multi-Purpose Hydraulic/Transmission Oil for use in most hydraulic applications, and hydrostatic transmissions. Specific Simplicity applications: All hydrostatic transmissions, all bevel gear cases. Case of 12 Quarts, Part #1685516, 2-1/2 Gallon Container, Part #1685539.

SAE 5W-30 SF/CD Cold Weather Engine Oil for use in all four cycle and diesel engines at 30° temp. and under. Case of 12 quarts, Part #1685576.

SAE 15W-40 SF/CD Engine Oil for gas and diesel engines, warm weather; see engine manufacturer recommendations. Case of 12 quarts, Part #1685554.

SAE 30W SG/CC Detergent Engine Oil for use in four cycle lawn and garden engines at operating temp. of 32° and above. Also recommended for use in hydrostatic transmissions where 30W oil is specified. Case of 12 quarts, Part #1685659.

DEGREASER, DEGRIMER, PARTS CLEANER removes grease, oil, dirt and grime without harming paint or decals.

- 1 Quart w/Trigger Spray 1685619
- 1 Gallon Bottle 1685621
- Extension Sprayer for Gallon Bottle 1685623

TOUCH-UP PAINT keeps equipment in showroom condition.

Spray Cans	Quarts	Daubers-12 Per Ctn.
<i>For Products Built After 8/1/89.</i>		
"Deep Orange" 13 Oz. Can 1685611 Case 12 Cans 1685614	1685612	1685616 Mixed 6 Deep Or./ 6 White 1/2 Oz. Bottles
"Gloss Black" 13 Oz. Can 1685639 Case 12 Cans 1685640	1685641	N/A
"White" 13 Oz. Can 103049 Case 12 Cans 1685178	1685032	See Above
"Red" 13 Oz. Can 1685722	N/A	N/A

Consult decal on equipment for proper color.

AVAILABLE ACCESSORIES:

DESIGNER SEAT COVERS are double stitched, easy care vinyl. Keeps new seats new, makes worn seats look new.

Small Seat Cover w/Pocket, Part #1685540. Fits all Rear Engine Riders, FC, RT Series Tractors.

Large Seat Cover w/Pocket, Part #1685541. Fits all 12.5 & 16 LT and GT Series Tractors.

Seat Cover, Part #1685577. Fits all 18 & 20 GTH Tractors.

PNEUMATIC TIRE SEAL seals all leaks including bead leaks and punctures up to 3/16 inch diameters. Prevents flats for tread life of tire. Available in following amounts.

- Case of 12 -11 Oz. Tubes 1685537
- Case of 24 -11 Oz. Tubes 1685525
- 5 Gallon Pail 1685527

HOUR METER KIT, Part #1685535.

GREASE GUN KIT has 12' flexible hose to get into tight spots with ease. Kit contains: gun and 1-8 Oz. tube of grease. Part #1685510. For replacement tube, order Part #103077.

CHROME "Moon" Hubcaps

- 4" Rim 163114
- 6" Rim 156210
- 8" Rim 156211
- 10" Rim 1667782
- 12" Rim 154505

**Extend Equipment Life - Use Only Genuine Simplicity Parts & Accessories
Available at Your Local Simplicity Dealer**

Table of Contents

HANDLE & CONTROLS	2
ENGINE	4
FRAME	6
AUGER DRIVE	8
AUGER HOUSING & CHUTE	10
WHEELS & TRACTION DRIVE	12
TRANSMISSION - PEERLESS MODEL 700-027	14
DECAL & WRAPPER EXTENSION	16
STANDARD HARDWARE TORQUE CHART	18
PART NUMBER INDEX	A1

Simplicity Sno-Away Models 5-55 & 7-55

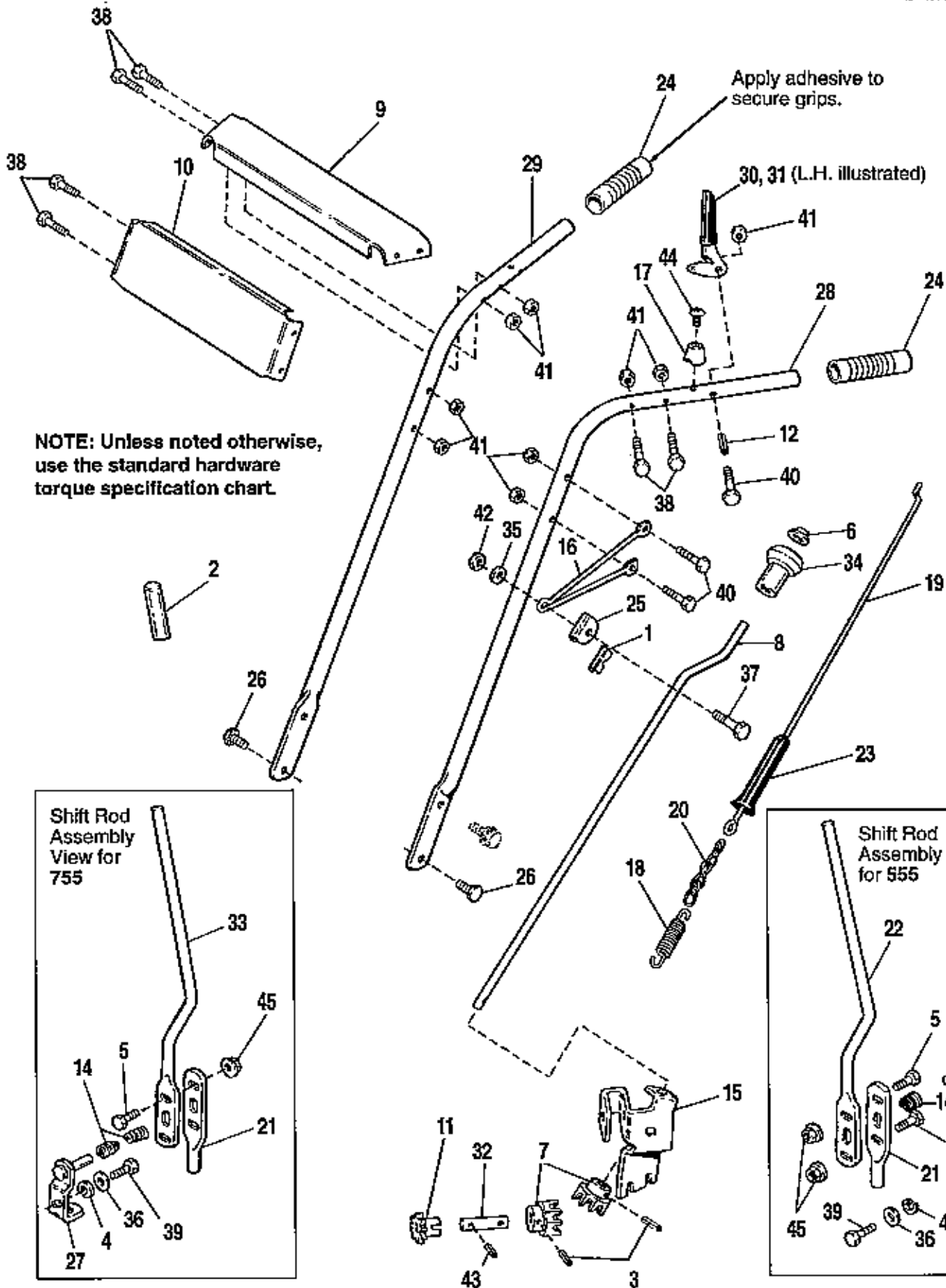
5 HP Models

Mfg. No. 1691411

7 HP Models

Mfg. No. 1691413

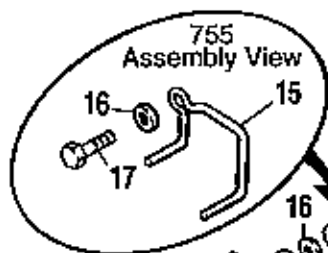
Mfg. No. 1691414



All Models

Handle & Controls

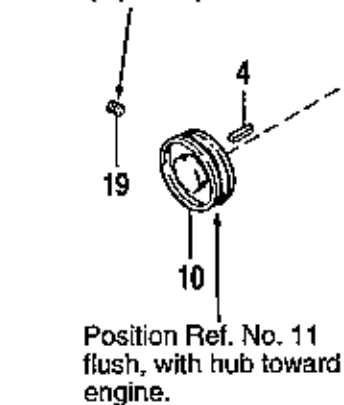
REF. NO.	PART NO.	QTY.	DESCRIPTION
1	121175	1	LINER, Rod Guide
2	176934	1	GRIP
3	916168	2	PIN, Roll, 1/8 x 3/4
4	1916964	1	LOCKWASHER, 1/4
5	1923341	2	CAPSCREW, Hex, 1/4-20 x 3/4
6	1960093	1	PALNUT
7	1668188	2	GEAR, Universal
8	1668189	1	ROD, Chute Control
9	1674177	1	HANDLE PANEL, Upper
10	1674178	1	HANDLE PANEL, Lower
11	1674329	1	SPROCKET, Chute
12	1674580	2	SPACER
13	1676252	1	ARM, Shift Assy. - 5 HP Only
14	1676253	1	SPRING (Qty. 2 on 7 HP)
15	1676325	1	SUPPORT, Gear
16	1676390	1	BRACKET, Control Rod
17	1676444	2	BUMPER
18	1676450	2	SPRING
19	1676451	2	ROD, Clutch
20	1676452	2	CHAIN
21	1676484	1	SHIFT ROD, Lower
22	1676485	1	SHIFT ROD, Upper - 5 HP Only
23	1676486	2	SLEEVE, Vinyl
24	1676954	2	GRIP, Handle
25	1677355	1	GUIDE, Adj. Rod
26	1960122	2	SCREW, Special, 5/16-18 x 3/4
27	1678696	1	ARM, Shift Assy. - 7 HP Only
28	1678938	1	HANDLE, Tube, LH - Black Finish
29	1678939	1	HANDLE, Tube, RH - Black Finish
30	1679227	1	CLUTCH LEVER ASSY., RH
31	1679228	1	CLUTCH LEVER ASSY., LH
32	1700886	1	ROD, Chute, Lower
33	1704682	1	SHIFT ROD, Upper - 7 HP Only
34	1714084	1	KNOB, Spinner
35	1919326	1	WASHER, 5/16
36	1921319	1	WASHER, 1/4
37	1921221	1	CAPSCREW, Hex, 5/16-18 x 1-1/2
38	1921961	6	CAPSCREW, Hex, 1/4-20 x 1-1/4
39	1922234	1	CAPSCREW, Hex, 1/4-20 x 5/8
40	1922837	4	CAPSCREW, Hex, 1/4-20 x 1-1/2
41	1923358	10	NUT, Centerlock, 1/4-20
42	1923362	1	NUT, Hex, Centerlock, 5/16-18
43	1926228	1	PIN, Roll, 5/32 x 1
44	1927426	2	SCREW, Thd. Cutting Pan Hd. #10-24
45	1930641	2	NUT, Hex, Whizlock, 1/4-20



NOTE A: Position Belt Guides 1/16" to 1/8" from belt when idler arm is engaged.



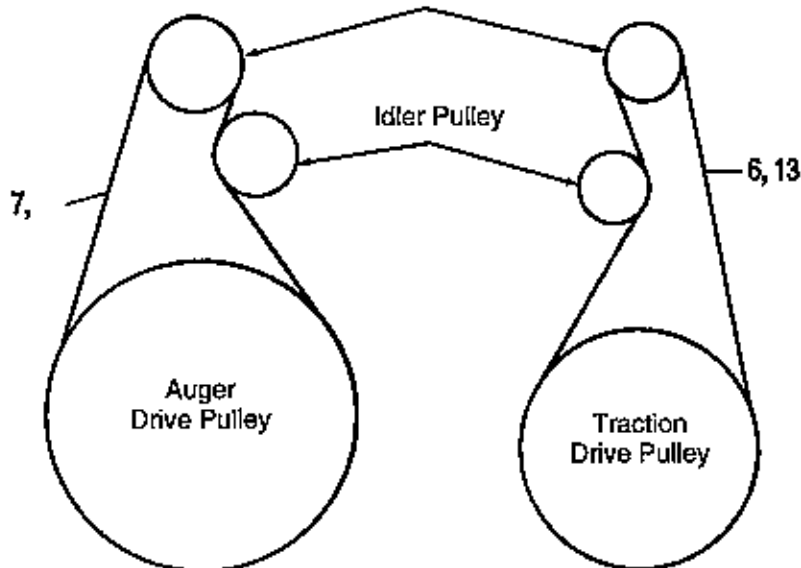
Torque to 10-14 ft. lbs.
(2 places)



Position Ref. No. 11
flush, with hub toward
engine.

Install with the hub facing engine on 755.
Install with the hub away from engine on 555.

Engine Pulley



NOTE: Unless noted otherwise,
use the standard hardware torque
specification chart.

All Models

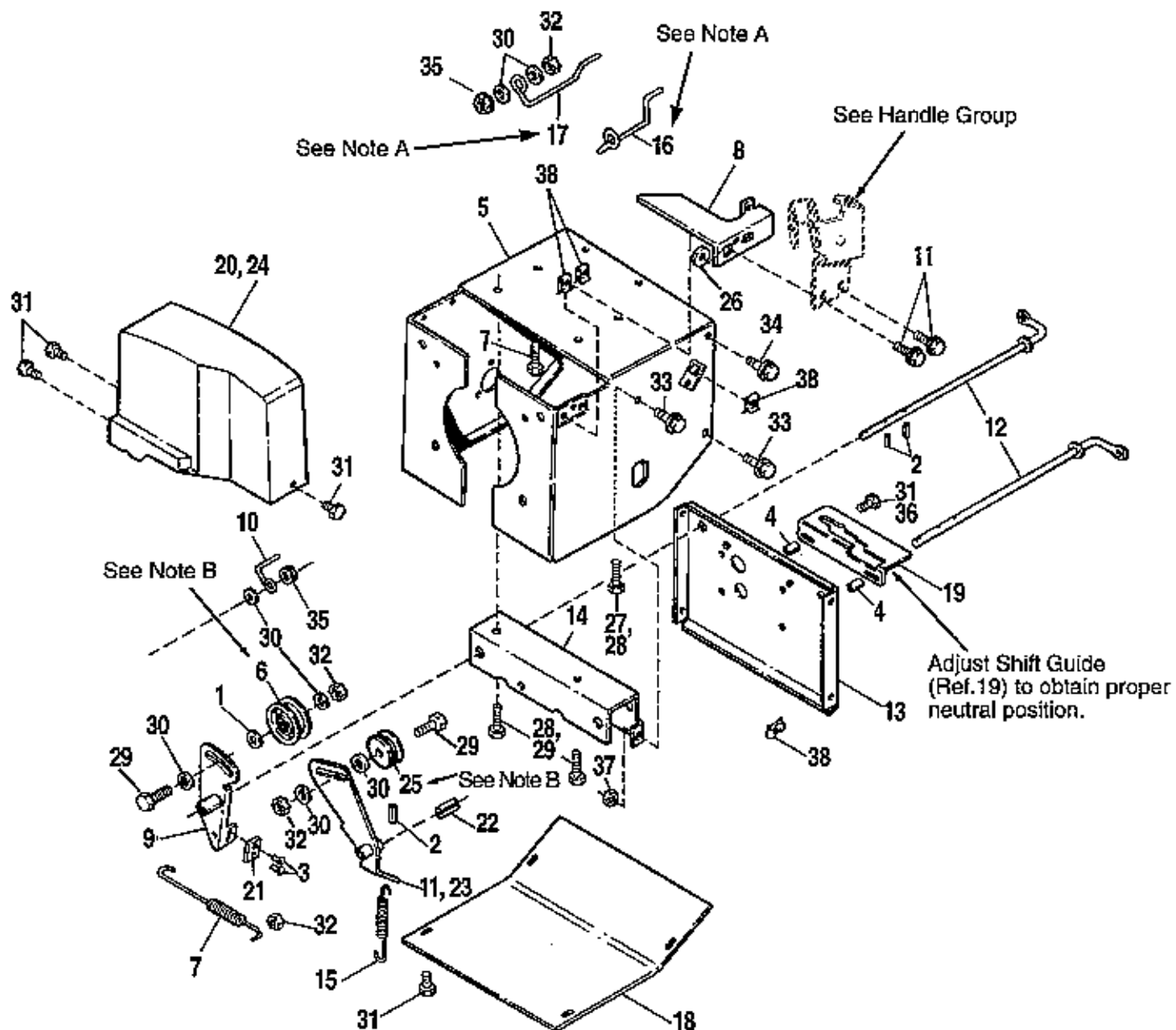
Engine

REF. NO.	PART NO.	QTY.	DESCRIPTION
1	*	1	ENGINE, Tecumseh
2	*	1	SWITCH ASSY., Ignition w/keys
3	905121	1	KEY, Woodruff, 1/8 x 5/8
4	905850	1	KEY, Sq., 3/16 x 3/16 x 1
5	1667700	1	GROUND WIRE
6	1674308	1	BELT, Traction Drive (5 HP only)
7	1674312	1	BELT, Auger Drive
8	1674325	1	PULLEY, Idler (5 HP only)
9	1675339	1	NUT, Hex, Lock, 5/16-18 (5 HP only)
10	1674328	1	PULLEY, Engine
11	1677924	1	GUIDE, Belt
12	1677925	1	GUIDE, Belt (5 HP only)
13	1678600	1	BELT, Traction Drive (7 HP only)
14	1678692	1	PULLEY, Traction Drive (7 HP only)
15	1678925	1	GUIDE, Belt (7 HP Only)
16	1919326	4	WASHER, 5/16 (Qty. 3 used on 5 HP)
17	1921515	2	CAPSCREW, Hex, 5/16-24 x 3/4 (Qty. 1 used on 5 HP)
18	1921962	1	CAPSCREW, Hex Hd., 1/4-20 x 1-3/4
19	1928691	2	SETSCREW, Socket Hd., 5/16-18 x 5/16 (Qty. 1 used on Mfg. No. 1691414)
20	1931277	4	NUT, Hex, Flange Lock, 5/16-18

* See your local Tecumseh dealer for parts & service.

**NOTE: Use Simplicity SAE 5W-30 Cold Weather Engine Oil.
Part Number 1685576 (12 qts./case).**

NOTE A: Position Belt Guides 1/16" to 1/8" from Belt when Idler Arm is engaged.



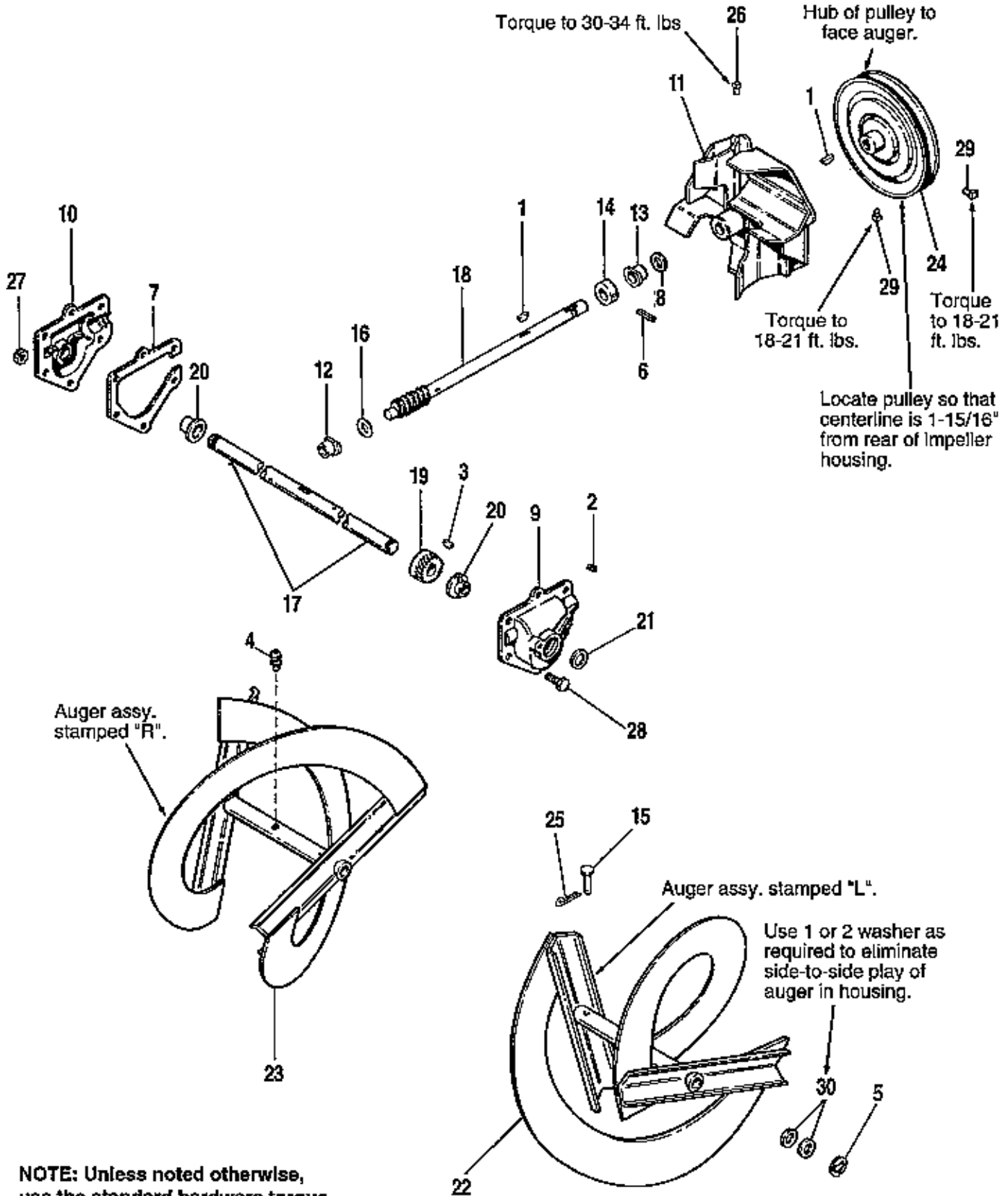
NOTE B: Position Idler Pulleys (Ref. Nos. 25 & 6) to outside end of slot.

NOTE: Unless noted otherwise, use the standard hardware torque specification chart.

All Models**Frame**

REF. NO.	PART NO.	QTY.	DESCRIPTION
1	174870	1	SPACER
2	916169	3	PIN, Roll
3	925160	2	RIVET
4	1608310	2	SPACER (7 HP only)
5	1611743	1	FRAME
6	1668477	1	PULLEY, Idler, Auger
7	1673911	1	SPRING, Brake Return
8	1674297	1	COVER, Belt
9	1674316	1	IDLER ARM & BRAKE ASSY. (Incl. Ref. Nos. 21 & 3)
10	1674315	1	GUIDE, Belt
11	1674318	1	IDLER ARM ASSY., Traction (5 HP only)
12	1674320	2	ROD, Idler
13	1675112	1	MOUNTING PLATE, Transmission
14	1675114	1	SUPPORT, Transmission
15	1676210	1	SPRING
16	1676219	1	BELT GUIDE, LH
17	1676220	1	BELT GUIDE, RH
18	1676442	1	PAN, Bottom
19	1676501	1	GUIDE, Shift
20	1676508	1	GUARD, Belt (5 HP only)
21	1676543	1	PAD, Brake
22	1677237	1	SPACER
23	1678694	1	IDLER ARM ASSY., Traction (7 HP only)
24	1678699	1	GUARD, Belt (7 HP only)
25	1685370	1	PULLEY, Idler (Incl. Ref. No. 1)
26	1919326	1	WASHER, 11/32
27	1921221	4	SCREW, Hex, 5/16-18 x 1-1/2 (5 HP only)
28	1921332	4	CAPSCREW, Hex Hd., 5/16-18 x 3/4 (7 HP only)
29	1921969	2	CAPSCREW, Hex, 3/8-16 x 1-1/2
30	1924940	11	WASHER
31	1925003	9	SCREW, Hex, Taptite, 1/4-20 x 1/2 (Qty. 7 on 7 HP)
32	1928731	5	NUT, Hex, Jam 3/8-16
33	1930591	6	SCREW, Hex, Flange Lock, 5/16-18 x 3/4
34	1930595	2	SCREW, Hex, Flange Lock, 5/16-18 x 1-1/4
35	1930645	4	NUT, Hex, Flange Lock, 3/8-16
36	1930810	2	SCREW, Hex Hd., Taptite 1/4-20 x 1-1/2 (7 HP only)
37	1931277	4	NUT, Hex, Flange Lock, 5/16-18
38	1935255	8	PALNUT, 5/16-18

A-1313



NOTE: Unless noted otherwise, use the standard hardware torque specification chart.

All Models

Auger Drive

REF. NO.	PART NO.	QTY.	DESCRIPTION
1	905123	2	KEY, Woodruff, 3/16 x 3/4
2	917673	1	PLUG, Pipe, 1/8-NPT
3	918312	1	KEY, Woodruff
4	921133	2	GREASE FITTING
5	927794	2	RING, Retaining
6	936098	1	PIN, Drivelok, 3/16 x 1-1/2
7	1611784	1	GASKET
8	1611789	1	SEAL, Oil
* 9	1611793	1	GEAR CASE ASSY., LH (Incl. Ref. No. 20, Qty. 1)
* 10	1611794	1	GEAR CASE ASSY., RH (Incl. Ref. No. 20)
11	1611795	1	IMPELLER ASSY.
12	1666424	1	BUSHING
13	1666425	1	BUSHING
14	1668105	1	COLLAR, Thrust
15	1668344	2	PIN, Shear
16	1670971	1	WASHER, Thrust
17	1675161	1	AUGER, Shaft
18	1675162	1	WORM SHAFT
19	1676024	1	GEAR, Worm
20	1676026	2	BUSHING
21	1676027	2	SEAL, Oil
22	1676327	1	AUGER ASSY., LH (Incl. Ref. No. 4, Qty. 1)
23	1676328	1	AUGER ASSY., RH (Incl. Ref. No. 4, Qty. 1)
24	1679655	1	PULLEY, Input, Auger
25	1918447	2	PIN, Cotter, 3/4
26	1960474	1	SETSCREW, Sq. Hd., 3/8-16 x 1/2
27	1923358	6	NUT, Lock, 1/4-20
28	1924009	6	CAPSCREW, Hex, 1/4-20 x 7/8
29	1928721	2	SETSCREW, Sq. Hd., 5/16-18 x 1/2
30	1960114	A/R	WASHER

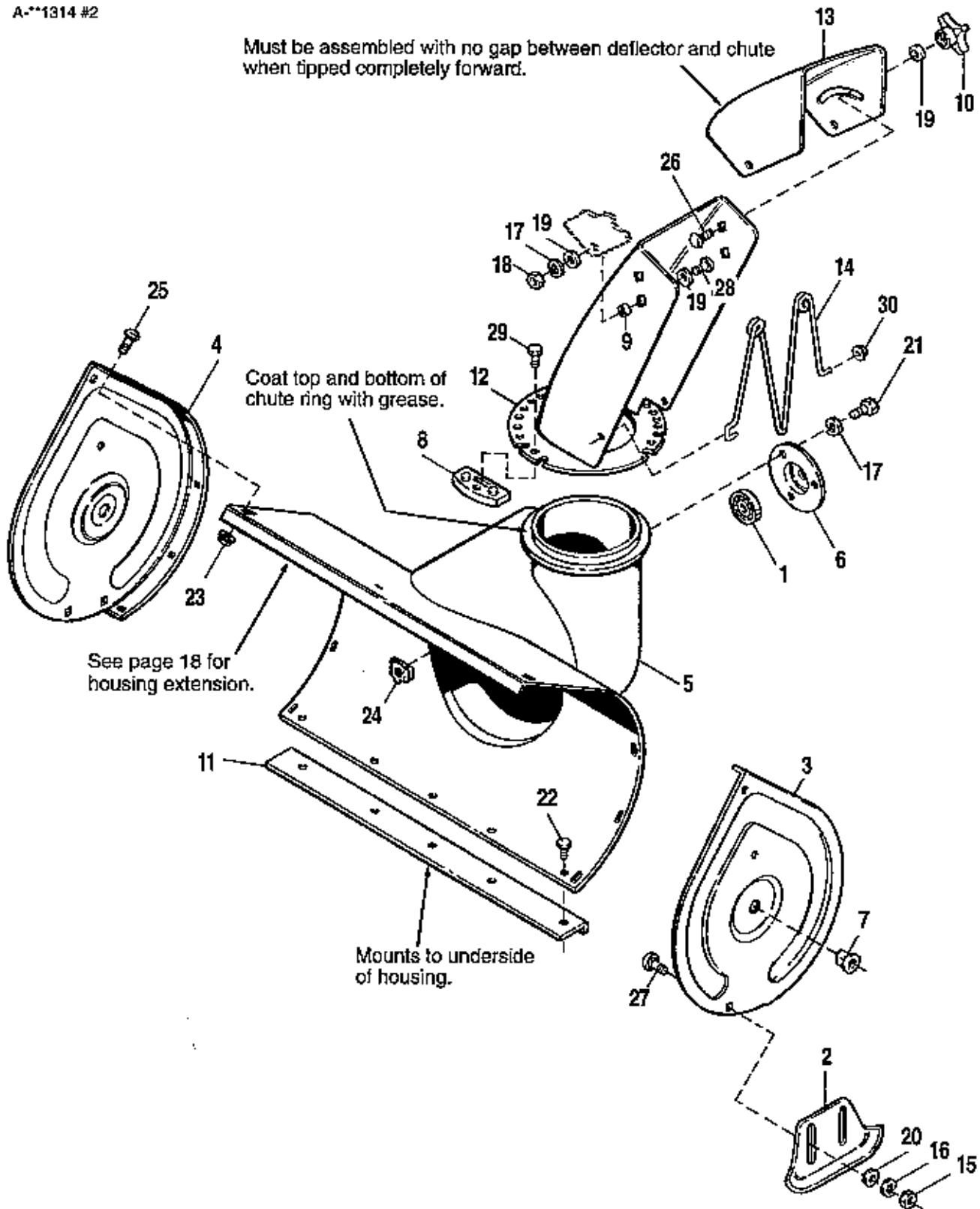
* NOTE: Use Simplicity Brand Cold Weather Worm Gear
Oil in Worm Gear Housing. 1-8 oz.bottle Part Number 1704636,
Case of 12-8 oz. bottles, Part Number 1685406.

A/R = As Required.

Auger, Housing & Chute

A-1314 #2

Must be assembled with no gap between deflector and chute when tipped completely forward.



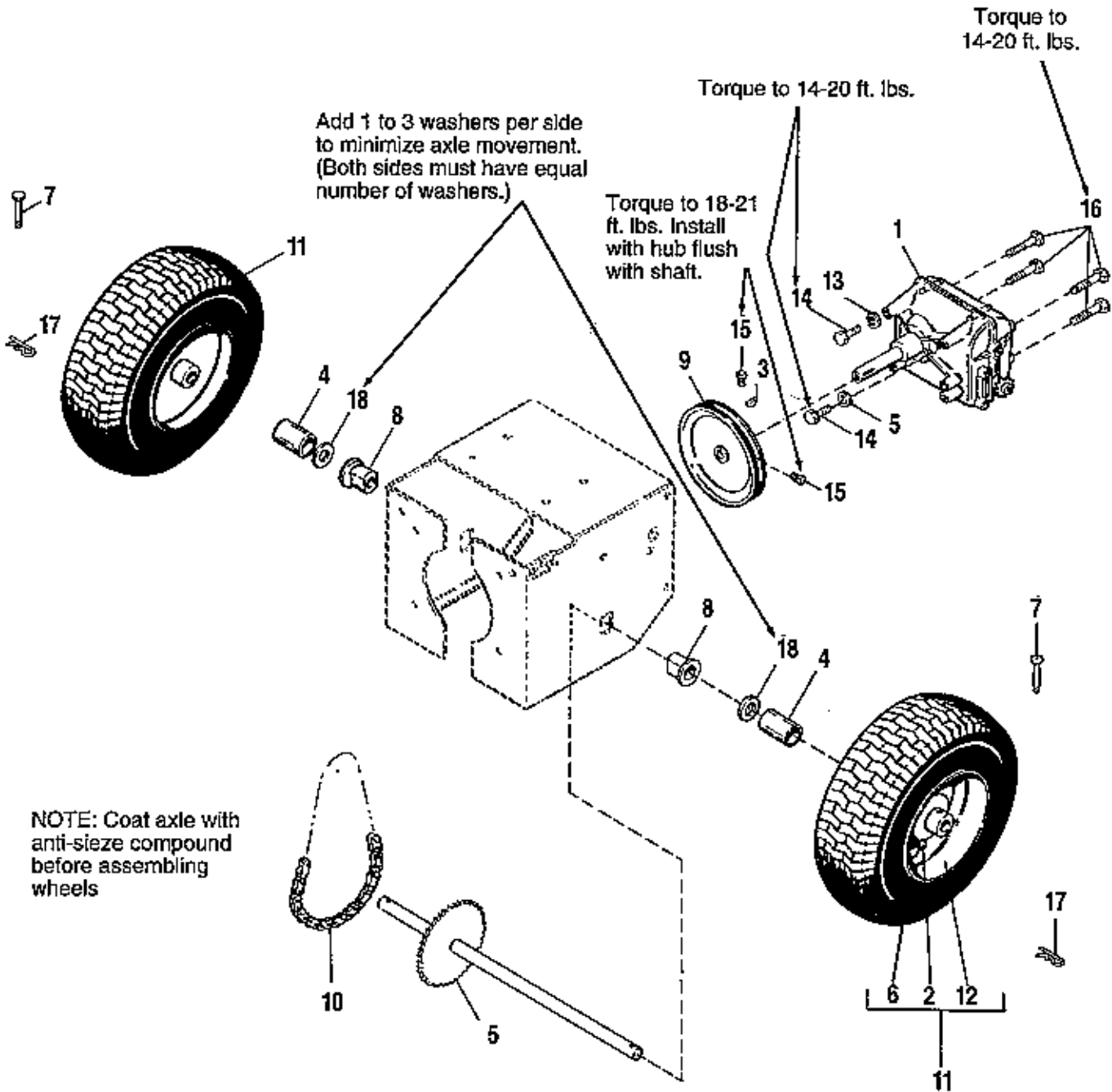
NOTE: Unless noted otherwise, use the standard hardware torque specification chart.

All Models

Auger, Housing & Chute

REF. NO.	PART NO.	QTY.	DESCRIPTION
1	108202	1	BEARING, Ball
* 2	177434	2	SKID
3	1611746	1	AUGER HOUSING END, LH
4	1611747	1	AUGER HOUSING END, RH
5	1611798	1	AUGER HOUSING ASSY.
6	1665982	1	RETAINER, Bearing
7	1666001	2	BUSHING
8	1666613	2	HOLD DOWN, Chute
9	1667790	2	SPACER
10	1670578	1	KNOB
11	1675080	1	SCRAPER BLADE
12	1676224	1	CHUTE ASSY.
13	1676379	1	DEFLECTOR
14	1676954	1	GUARD, Chute
15	1916950	4	NUT, Hex, 3/8-16
16	1916965	4	LOCKWASHER, 3/8
17	1917356	5	LOCKWASHER 5/16
18	1917372	2	NUT, Hex, 5/16-18
19	1919326	3	WASHER, 5/16
20	1924940	4	WASHER, 5/16
21	1925205	3	SCREW, Hex, 5/16-18 x 5/8
22	1927428	5	SCREW, Taptite, 1/4-20 x 3/8
23	1930641	8	NUT, Hex, Flange Lock, 1/4-20
24	1930659	3	NUT, Retainer, 5/16-18
25	1931315	8	CARRIAGE BOLT, 1/4-20 x 1/2
26	1931334	1	CARRIAGE BOLT, 5/16-18 x 7/8, Gr. 5
27	1931348	4	CARRIAGE BOLT, 3/8-16 x 3/4
28	1936482	2	SCREW, Phillips Hd., 5/16-18 x 3/4
29	1960001	2	SCREW, Plastite, #10
30	1960140	1	NUT, Push

*Set of two available under Part Number 1685501



NOTE: Coat axle with anti-seize compound before assembling wheels

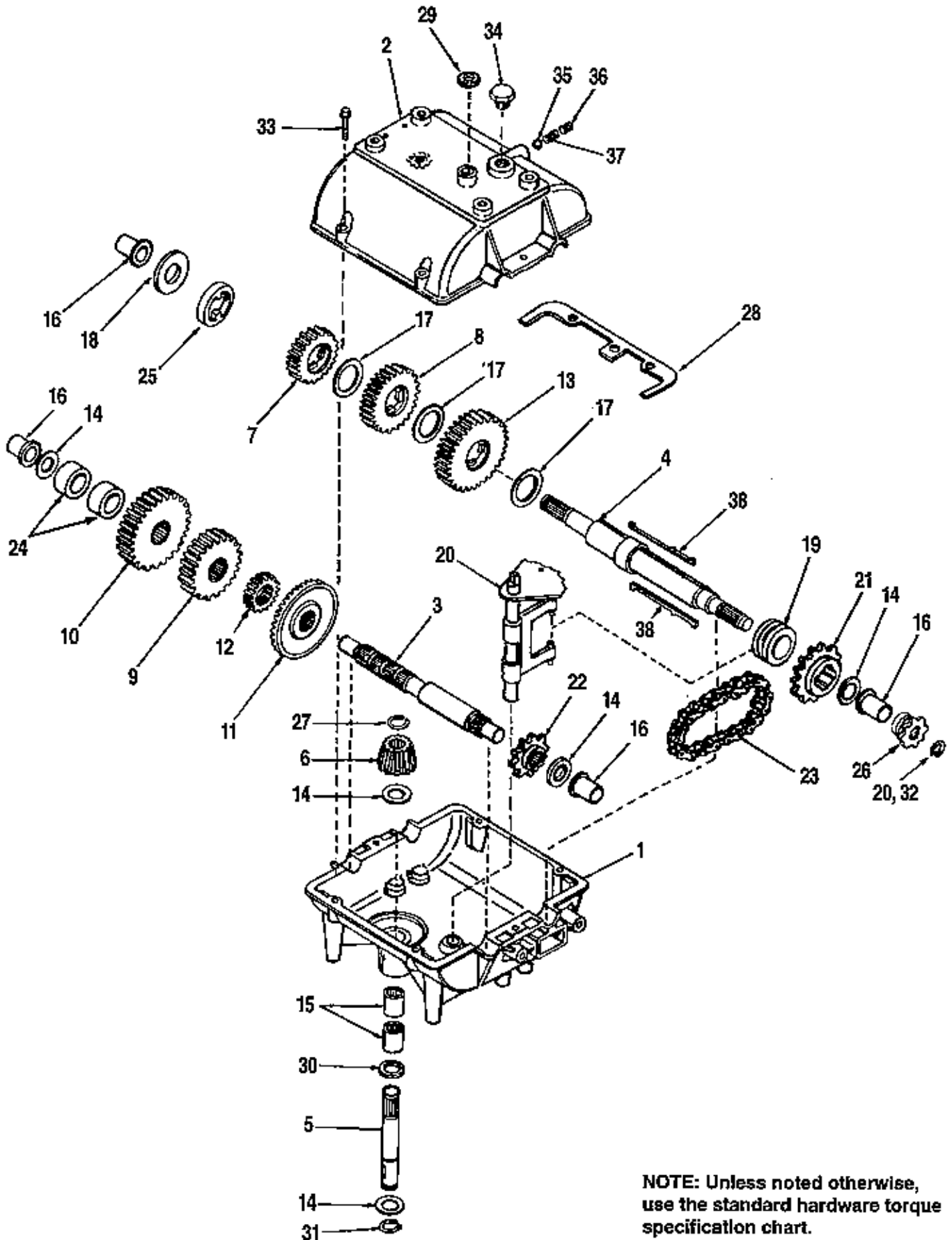
NOTE: Unless noted otherwise, use the standard hardware torque specification chart.

All Models

Wheels & Traction Drive

REF. NO.	PART NO.	QTY.	DESCRIPTION
1	*	1	TRANSMISSION
2	172353	2	VALVE STEM & CAP
3	930670	1	KEY, Woodruff, Hi Pro, 3/16 x 3/4
4	1611748	2	SPACER, Wheel
5	1611993	1	AXLE & SPROCKET ASSY.
6	1612001	2	TIRE, Snow Hog Tread, 4.10-6
7	1665994	2	PIN, Clevis
8	1666001	2	BUSHING, Wheel
9	1674306	1	PULLEY ASSY., Traction
10	1676381	1	DRIVE CHAIN
11	1714236	2	TIRE & WHEEL ASSY., (Incl. Ref. Nos. 2, 6 & 12)
12	1714241	2	WHEEL, (Metallic Grey)
13	1917356	2	LOCKWASHER
14	1921332	2	CAPSCREW, Hex, 5/16-18 x 3/4
15	1930540	2	SETSCREW, Sq. Hd., 5/16-18 x 5/8
16	1930601	4	SCREW, Hex, Taptite, 5/16-18 x 5/8
17	1980074	2	CLIP, Hair Pin
18	1960114	2	WASHER

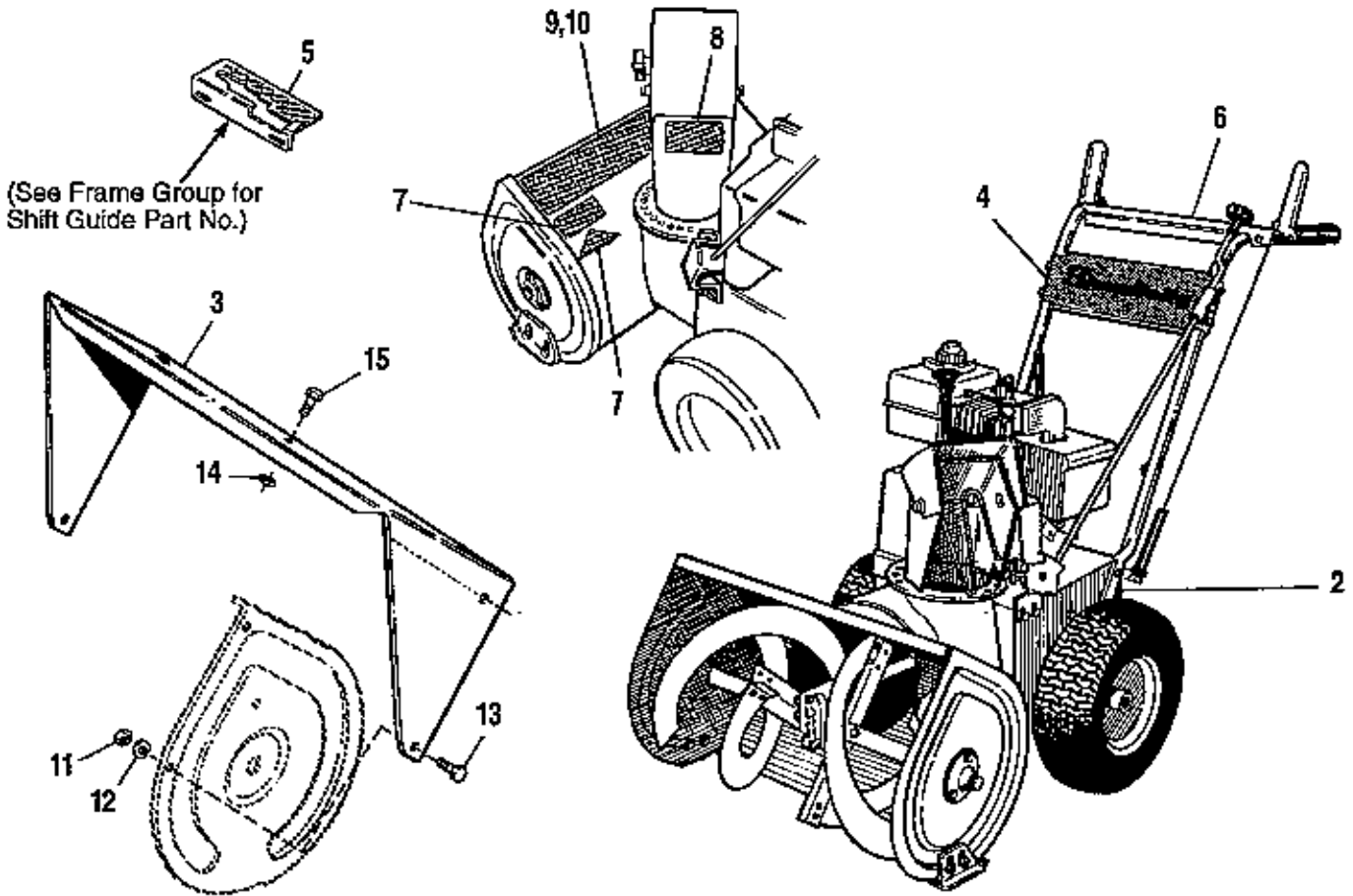
* Peerless Transmission, Model 700-727 (see page 14-15 for parts breakdown). See an authorized Tecumseh dealer for parts and service.



All Models**Transmission - Peerless Model 700-027**

REF. NO.	PART NO.	QTY.	DESCRIPTION
1	770061	1	CASE, Transmission
2	772083	1	COVER, Transmission
3	776134	1	SHAFT, Counter
4	776162	1	SHAFT, Output & Brake
5	776203	1	SHAFT, Input
6	778113A	1	BEVEL PINION, Input
7	778121A	1	GEAR, Spur (20 teeth)
8	778124A	1	GEAR, Spur (30 teeth)
9	778126A	1	GEAR, Spur (20 teeth)
10	778129A	1	GEAR, Spur (30 teeth)
11	778137A	1	GEAR, Bevel (42 teeth)
12	778145	1	GEAR, Spur (12 teeth)
13	778146A	1	GEAR, Spur (37 teeth)
14	780072	5	WASHER, Thrust
15	780086	2	BEARING, Needle
16	780105A	4	BUSHING, Flanged
17	780108	3	WASHER, Thrust
18	780109	1	WASHER, Thrust
19	784266	1	COLLAR, Shift
20	784270	1	ROD & FORK ASSY., Shift
21	786060	1	SPROCKET (14 teeth)
22	786061	1	SPROCKET (10 teeth)
23	786062A	1	CHAIN, Roller (No. 41 chain, 22 links)
24	786071	2	SPACER (1-1/8" O.D. x 3/4" I.D. x 3/8" thick)
25	786072	1	SPACER (1-3/8" O.D. x 1/8" I.D. x 3/8" thick)
26	786136	1	SPROCKET, (8 teeth)
27	788040	1	RING, Retaining
28	788054	2	GASKET
29	788069	1	SEAL, Square Cut
30	792001	1	"O" RING
31	792035	1	RING, Retaining
32	792072	1	RING, Retaining
33	792073	6	SCREW, Fl. Hex Hd., Thread Forming, 1/4-20 x 1-1/4
34	792074	1	PLUG, Threaded
35	792077	1	BALL, Steel, 5/16"
36	792078	1	SCREW, Set, 3/8-16 x 3/8
37	792079	1	SPRING
38	792089A	2	KEY

NOTE: See an authorized Tecumseh dealer for parts and service.



SAFETY DECALS



Ref. No. 8



Ref. No. 7




All Models

Decal & Wrapper Extension Group

REF. NO.	PART NO.	QTY.	DESCRIPTION
1		1	DECAL, OPEI
2		1	I D. PLATE, Simplicity
3	1676631*	1	WRAPPER EXT
4	1674170	1	DECAL, Simplicity
5	1676667	1	DECAL, Shift Pattern
6	1676937	1	DECAL, Dash
7	1677485	1	DECAL, Danger, Auger
8	1677488	1	DECAL, Danger, Blower
9	1714107	1	DECAL, Simplicity 755
10	1714108	1	DECAL, Simplicity 555
11	1916622	2	NUT, Hex, 1/4-20
12	1916964	2	LOCKWASHER, 1/4
13	1921958	2	CAPSCREW, 1/4-20 x 1/2
14	1930641	3	NUT, Hex, Flange, 1/4-20
15	1931315	3	CAPSCREW, 5/16-18 x 5/8
Not Shown:			
	1704482	1	DECAL, Touch-up Paint

* This is standard equipment on Model 755. It is optional for Model 555.

**TORQUE SPECIFICATIONS FOR
STANDARD MACHINE HARDWARE
(Tolerance $\pm 20\%$)**

SIZE	SAE GRADE #2 		SAE GRADE #5 		SAE GRADE #8 	
	in/lbs ft/lbs	Nm.	in/lbs ft/lbs	Nm.	in/lbs ft/lbs	Nm.
8-32	19	2.1	30	3.4	41	4.6
8-36	20	2.3	31	3.5	43	4.9
10-24	27	3.1	43	4.9	60	6.8
10-32	31	3.5	<u>49</u>	5.5	<u>68</u>	7.7
1/4-20	66	7.6	8	10.9	12	16.3
1/4-28	<u>76</u>	8.6	10	13.6	14	19.0
5/16-18	11	15.0	17	23.1	25	34.0
5/16-24	12	16.3	19	25.8	27	34.0
3/8-16	20	27.2	30	40.8	45	61.2
3/8-24	23	31.3	35	47.6	50	68.0
7/16-14	30	40.8	50	68.0	70	95.2
7/16-20	35	47.6	55	74.8	80	108.8
1/2-13	50	68.0	75	102.0	110	149.6
1/2-20	55	74.8	90	122.4	120	163.2
9/16-12	65	88.4	110	149.6	150	204.0
9/16-18	75	102.0	120	163.2	170	231.2
5/8-11	90	122.4	150	204.0	220	299.2
5/8-18	100	136	180	244.8	240	326.4
3/4-10	160	217.6	260	353.6	386	525
3/4-16	180	244.8	300	408.0	420	571.2
7/8-9	140	190.4	400	544.0	600	816.0
7/8-14	155	210.8	440	598.4	660	897.6
1-8	220	299.2	580	788.8	900	1,244.0
1-12	240	326.4	640	870.4	1,000	1,360.0

NOTES

1. These torque values are to be used for all hardware excluding: locknuts, self-tapping screws, thread forming screws, sheet metal screws and socket head setscrews.
2. Recommended seating torque values for locknuts:
 - a. for prevailing torque locknuts - use 65% of grade 5 torques.
 - b. for flange whizlock nuts and screws - use 135% of grade 5 torques.
3. Unless otherwise noted on assembly drawings, all torque values must meet this specification.




INDEX

Part No.	Ref. No. & Page No.	Part No.	Ref. No. & Page No.	Part No.	Ref. No. & Page No.	Part No.	Ref. No. & Page No.
108202	1-11	916964	4-3	1674318	11-7	1678600	13-5
121175	1-3	917673	2-9	1674320	12-7	1678692	14-5
172353	2-13	918312	3-9	1674325	8-5	1678694	23-7
174870	1-7	921133	4-9	1674328	10-5	1678696	27-3
176934	2-3	923341	5-3	1674329	11-3	1678699	24-7
177434	2-11	925160	3-7	1674580	12-3	1678925	15-5
770061	1-15	927794	5-9	1675080	12-11	1678938	28-3
772083	2-15	930670	3-13	1675112	13-7	1678939	29-3
776134	3-15	936098	6-9	1675114	14-7	1678954	17-11
776162	4-15	1608310	4-7	1675161	17-9	1679227	30-3
776203	5-15	1611743	5-7	1675162	18-9	1679228	31-3
778113A	6-15	1611746	3-11	1675339	9-5	1679655	24-9
778121A	7-15	1611747	4-11	1676024	19-9	1685370	25-7
778124A	8-15	1611748	4-13	1676026	20-9	1700886	32-3
778126A	9-15	1611784	7-9	1676027	21-9	1704482	*-17
778129A	10-15	1611789	8-9	1676210	15-7	1704682	33-3
778137A	11-15	1611793	9-9	1676219	16-7	1714084	34-3
778145	12-15	1611794	10-9	1676220	17-7	1714107	9-17
778146A	13-15	1611795	11-9	1676224	13-11	1714108	10-17
780072	14-15	1611798	5-11	1676252	13-3	1714236	11-13
780086	15-15	1611993	5-13	1676253	14-3	1714241	12-13
780105A	16-15	1612001	6-13	1676325	15-3	1916622	11-17
780108	17-15	1663430	6-3	1676327	22-9	1916950	18-11
780109	18-15	1665982	6-11	1676328	23-9	1916964	12-17
784266	19-15	1665994	7-13	1676379	14-11	1916965	19-11
784270	20-15	1666001	7-11	1676381	10-13	1917356	20-11
786060	21-15	1666001	8-13	1676390	16-3	1917356	13-13
786061	22-15	1666424	12-9	1676442	18-7	1917372	21-11
786062A	23-15	1666425	13-9	1676444	17-3	1918447	25-9
786071	24-15	1666613	8-11	1676450	18-3	1919326	35-3
786072	25-15	1667700	5-5	1676451	19-3	1919326	16-5
786136	26-15	1667790	9-11	1676452	20-3	1919326	26-7
788040	27-15	1668105	14-9	1676484	21-3	1919326	22-11
788054	28-15	1668188	7-3	1676485	22-3	1921221	37-3
788069	29-15	1668189	8-3	1676486	23-3	1921221	27-7
792001	30-15	1668344	15-9	1676501	19-7	1921319	36-3
792035	31-15	1668477	8-7	1676508	20-7	1921332	28-7
792072	32-15	1670578	10-11	1676543	21-7	1921332	14-13
792073	33-15	1670971	16-9	1676631	3-17	1921515	17-5
792074	34-15	1673911	7-7	1676667	5-17	1921958	13-17
792077	35-15	1674170	4-17	1676937	6-17	1921961	38-3
792078	36-15	1674177	9-3	1676954	24-3	1921962	18-5
792079	37-15	1674178	10-3	1677237	22-7	1921969	29-7
792089A	38-15	1674297	8-7	1677355	25-3	1922234	39-3
905121	3-5	1674306	9-13	1677356	26-3	1922837	40-3
905123	1-9	1674308	6-5	1677485	7-17	1923084	26-9
905850	4-5	1674311	9-7	1677488	8-17	1923358	41-3
916168	3-3	1674312	7-5	1677924	11-5	1923358	27-9
916169	2-7	1674315	10-7	1677925	12-5	1923362	42-3

INDEX

Part No.	Ref. No. & Page No.	Part No.	Ref. No. & Page No.	Part No.	Ref. No. & Page No.	Part No.	Ref. No. & Page No.
1924009	28-9	1928721	29-9	1930645	35-7	1935255	38-7
1924940	30-7	1928731	32-7	1930659	28-11	1936482	33-11
1924940	23-11	1930540	15-13	1930810	36-7	1960001	34-11
1925003	31-7	1930591	33-7	1931277	20-5	1960074	17-13
1925205	24-11	1930595	34-7	1931277	37-7	1960114	30-9
1926228	43-3	1930601	16-13	1931315	29-11	1960114	18-13
1927426	44-3	1930641	45-3	1931315	15-17	1960140	35-11
1927428	25-11	1930641	27-11	1931334	30-11		
1928691	19-5	1930641	14-17	1931348	31-11		

**TORQUE SPECIFICATIONS FOR
STANDARD MACHINE HARDWARE
TOLERANCE $\pm 20\%$**

SIZE	SAE GRADE #2 		SAE GRADE #5 		SAE GRADE #8 	
	In./Lbs. Ft./Lbs.	Nm.	In./Lbs. Ft./Lbs.	Nm.	In./Lbs. Ft./Lbs.	Nm.
8-32	19	2.1	30	3.4	41	4.6
8-36	20	2.3	31	3.5	43	4.9
10-24	27	3.1	43	4.9	60	6.8
10-32	31	3.5	49	5.5	68	7.7
1/4-20	66	7.6	8	10.9	12	16.3
1/4-28	76	8.6	10	13.6	14	19.
5/16-18	11	15.	17	23.1	25	34.
5/16-24	12	16.3	19	25.8	25	34.
3/8-16	20	27.2	30	40.8	45	61.2
3/8-24	23	31.3	35	47.6	50	68.
7/16-14	30	40.8	50	68.	70	95.2
7/16-20	35	47.6	55	74.8	80	108.8
1/2-13	50	68.	75	102.	110	149.6
1/2-20	55	74.8	90	122.4	120	163.2
9/16-12	65	88.4	110	149.6	150	204.
9/16-18	75	102.	120	163.2	170	231.2
5/8-11	90	122.4	150	204.	220	299.2
5/8-18	100	136.	180	244.8	240	326.4
3/4-10	160	217.6	260	353.6	386	525.
3/4-16	180	244.8	300	408.	420	571.2
7/8-9	140	190.4	400	544.	600	816.
7/8-14	155	210.8	440	598.4	660	897.6
1-8	220	299.2	580	788.8	900	1,224.
1-12	240	326.4	640	870.4	1,000	1,360.

NOTE:

1. These torque values are to be used for all hardware excluding: locknuts, self-tapping screws, thread forming screws, sheet metal screws and socket head setscrews.
2. Recommended seating torque values for locknuts:
 - a. For prevailing torque locknuts - use 65% of grade 5 torques.
 - b. For flange whizlock nuts (and screws) - use 135% of grade 5 torques.
3. Unless otherwise noted on assembly drawings all torque values must meet this specification.

**BOLT HEAD MARKING
S.A.E. GRADE:**



Simplicity

**Outdoor Power
Equipment**

SIMPLICITY MANUFACTURING, INC. • 500 N. Spring Street, P.O. Box 997 • Port Washington, WI 53074-0997

TP-1403
Printed in USA
© 1995 2/95