

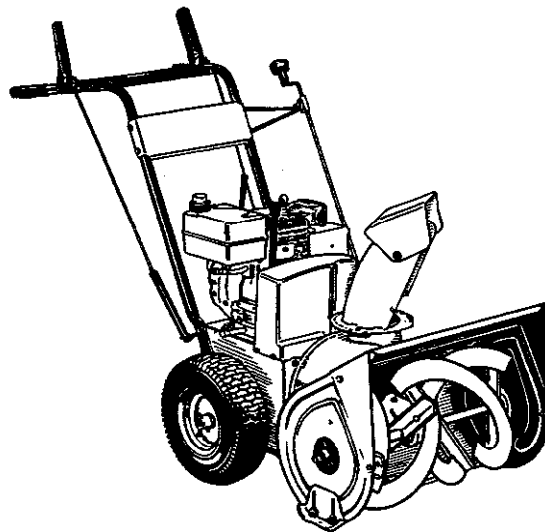
# **Baker™**

## **PARTS MANUAL**

### **WALK BEHIND SNOWTHROWER**

**7/22E**

Mfg. No. 1692615





# Table of Contents

HANDLE & CONTROLS .....	2
ENGINE .....	4
FRAME .....	6
AUGER DRIVE .....	8
AUGER HOUSING & CHUTE .....	10
WHEELS & TRACTION DRIVE .....	12
TRANSMISSION . PEERLESS MODEL 700-027 .....	14
DECAL & WRAPPER EXTENSION .....	16
STANDARD HARDWARE TORQUE CHART .....	18
PART NUMBER INDEX .....	AI

## **Simplicity Sno-Away Models 5-55 & 7-55**

### **5 HP Models**

**Mfg.No. 1691411**

Serial No. 6137 & Up

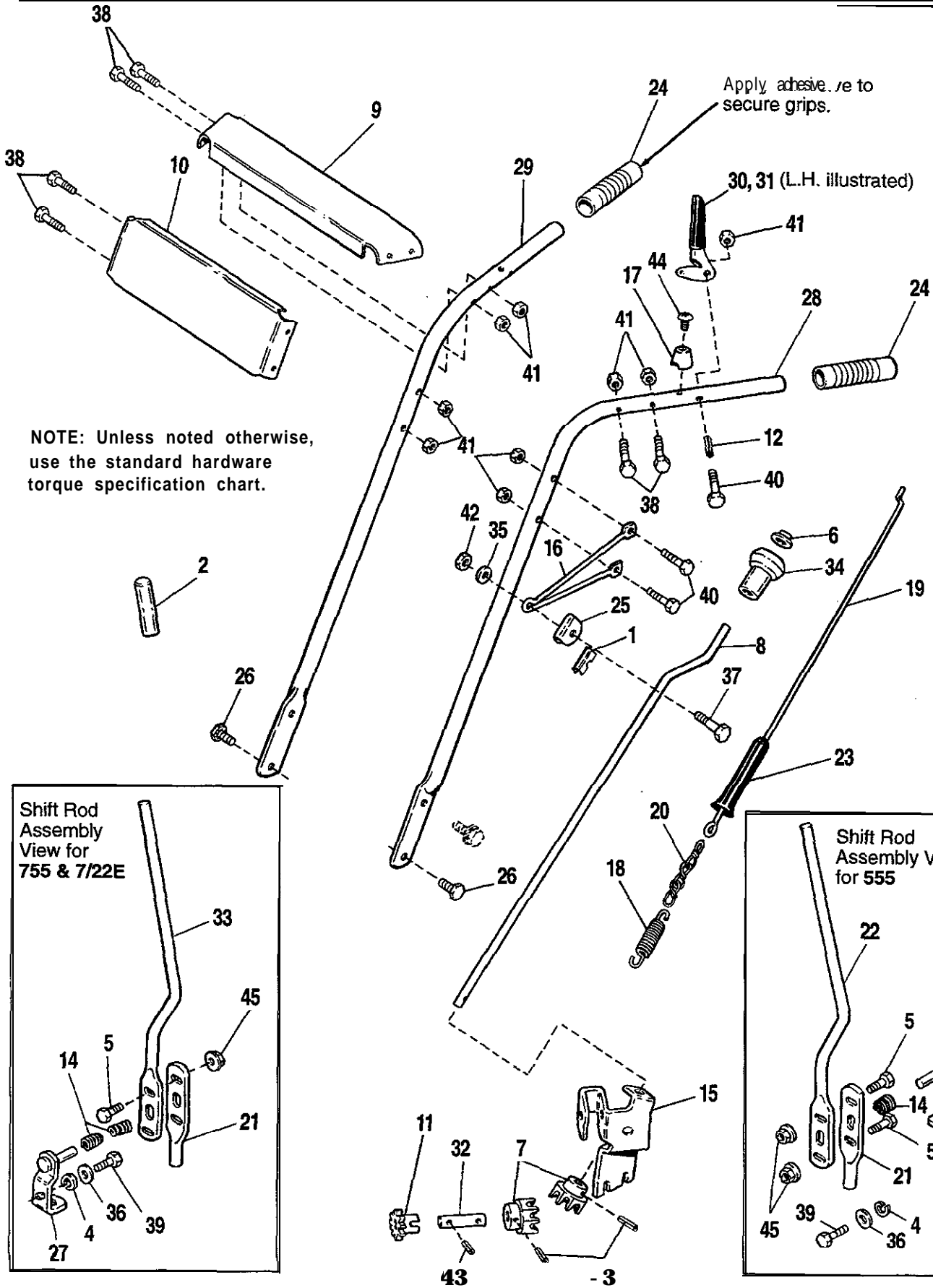
### **7 HP Models**

**Mfg.No. 1691413**

Serial No. 13781 & Up

**Mfg.No. 1691414**

Serial No. 2000 & Up

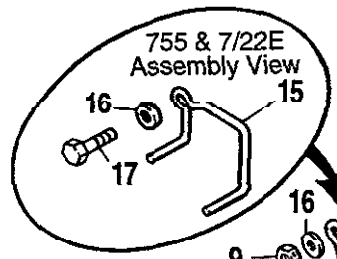


## All Models

### Handle & Controls

---

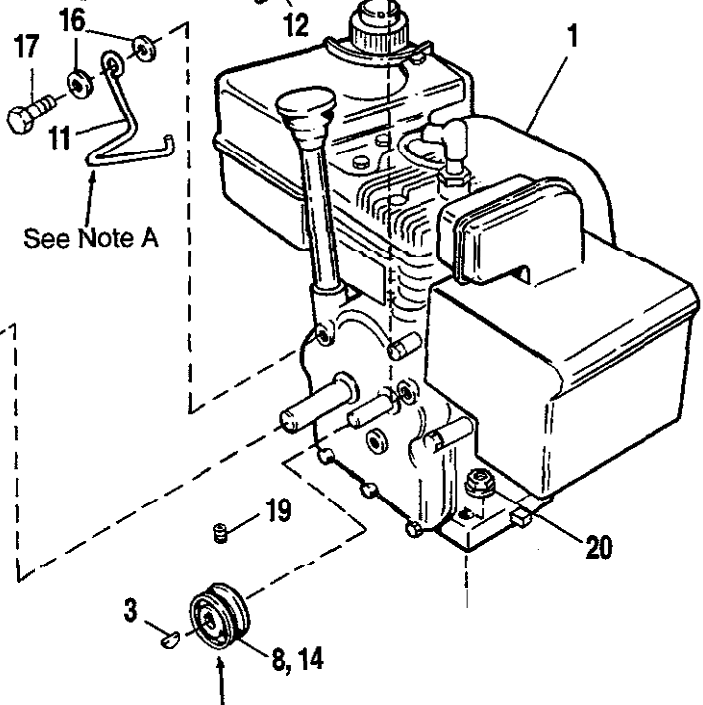
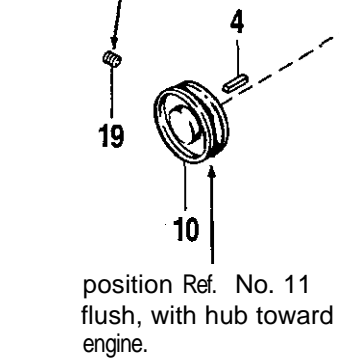
REF. NO.	PART NO.	QTY.	DESCRIPTION
1	121175	1	LINER, Rod Guide
2	176934	1	GRIP
3	916168	2	PIN, Roll, 1/8x 3/4
4	1916964	1	LOCKWASHER, 1/4
5	1923341	2	CAPSCREW, Hex, 1/4-20 x 3/4
6	1960093	1	PALNUT
7	1668188	2	GEAR, Universal
8	1668189	1	ROD, Chute Control
9	1674177	1	HANDLE PANEL, Upper
10	1674178	1	HANDLE PANEL, Lower
11	1674329	1	SPROCKET, Chute
12	1674580	2	SPACER
13	1676252	1	ARM, Shift Assy. - 5 HP Only
14	1676253	1	SPRING (Qty. 2 on 7 HP)
15	1676325	1	SUPPORT, Gear
16	1676390	1	BRACKET, Control Rod
17	1676444	2	BUMPER
18	1676450	2	SPRING
19	1676451	2	ROD, Clutch
20	1676452	2	CHAIN
21	1676484	1	SHIFT ROD, Lower
22	1676485	1	SHIFT ROD, Upper - 5 HP Only
23	1676486	2	SLEEVE, Vinyl
24	1676954	2	GRIP, Handle
25	1677355	1	GUIDE, Adj. Rod
26	1960122	2	SCREW, Special, 5/16-1 8 x 3/4
27	1678696	1	ARM, Shift Assy. - 7 HP Only
28	1678938	1	HANDLE, Tube, LH - Black Finish
29	1678939	1	HANDLE, Tube, RH - Black Finish
30	1679227	1	CLUTCH LEVER ASSY., RH
31	1679228	1	CLUTCH LEVER ASSY., LH
32	1700886	1	ROD, Chute, Lower
33	1704682	1	SHIFT ROD, Upper - 7 HP Only
34	1714084	1	KNOB, Spinner
35	1919326	1	WASHER, 5/1 6
36	1921319	1	WASHER, 114
37	1921221	1	CAPSCREW, Hex, 5/16-18 x 1-1/2
38	1921961	6	CAPSCREW, Hex, 1/4-20 x 1-1/4
39	1922234	1	CAPSCREW, Hex, 1/4-20 x 5/8
40	1922837	4	CAPSCREW, Hex, 1/4-20 x 1-112
41	1923358	10	NUT, Centerlock, 1/4-20
42	1923362	1	NUT, Hex, Centerlock, 5/1 6-1 8
43	1926228	1	PIN, Roll, 5/32 x 1
44	1927426	2	SCREW, Thd. Cutting Pan Hd. #10-24
45	1930641	2	NUT, Hex, Whizlock, 1/4-20



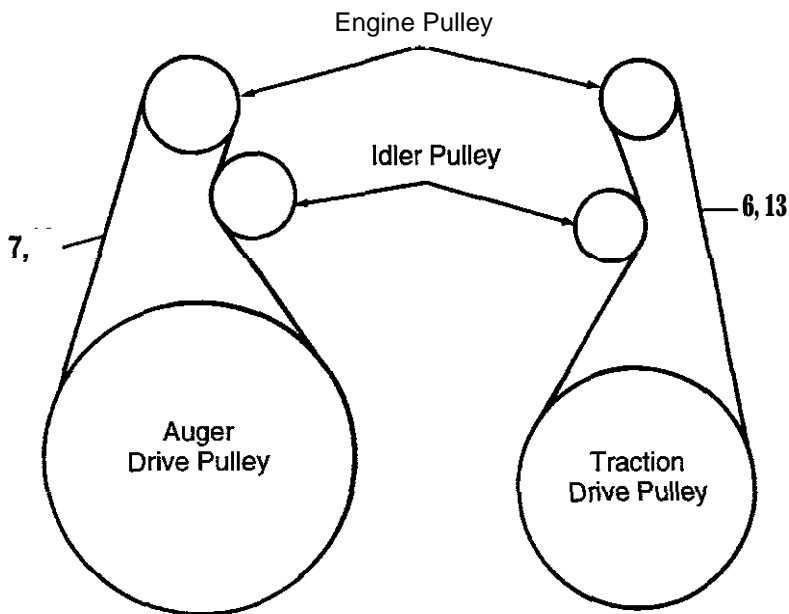
NOTE A: Position Belt Guides 1/16" to 1/8" from belt when idler arm is engaged.

555 Assembly View

Torque to 10-14 ft. lbs.  
(2 places)



Install with the hub facing engine on 755 & 7/22E.  
Install with the hub away from engine on 555.



NOTE: Unless noted otherwise,  
use the standard hardware torque  
specification chart.

## All Models

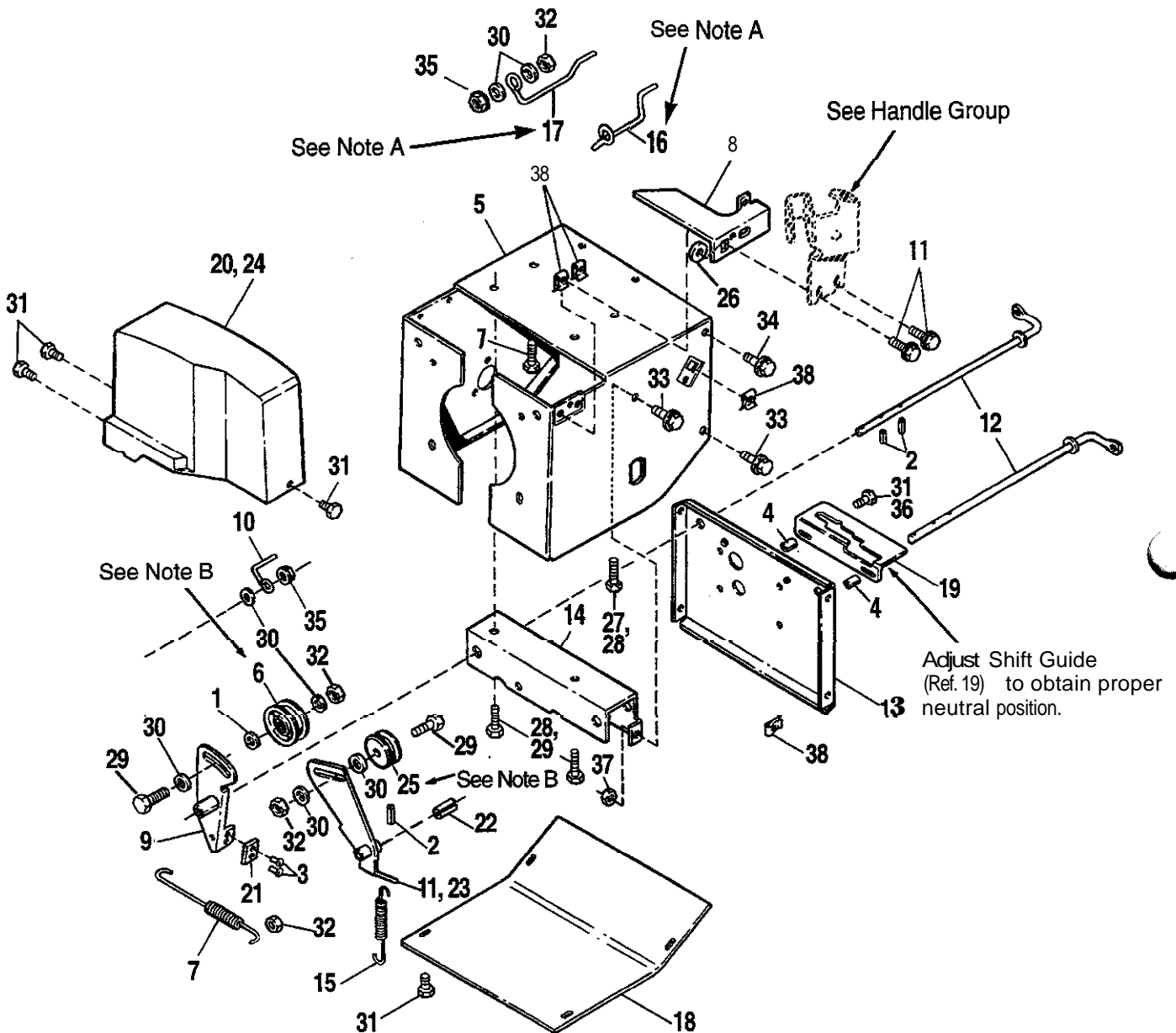
### Engine

REF. NO.'	PART NO.	QTY.	DESCRIPTION
1	*	1	ENGINE, Tecumseh
2	*	1	SWITCH ASSY., Ignition w/keys
3	905121	1	KEY, Woodruff, 1/8 x 5/8
4	905850	1	KEY, Sq., 3/16x 3/16 x 1
5	1667700	1	GROUND WIRE
6	1674308	1	BELT, Traction Drive (5 HP only)
7	1674312	1	BELT, Auger Drive
8	1674325	1	PULLEY, Idler (5 HP only)
9	1675339	1	NUT, Hex, Lock, 5/16-18 (5 HP only)
10	1674328	1	PULLEY, Engine
11	1677924	1	GUIDE, Belt
12	1677925	1	GUIDE, Belt (5 HP only)
13	1678600	1	BELT, Traction Drive (7 HP only)
14	1678692	1	PULLEY, Traction Drive (7 HP only)
15	1678925	1	GUIDE, Belt (7 HP Only)
16	1919326	4	WASHER, 5/16 (Qty. 3 used on 5 HP)
17	1921515	2	CAPSCREW, Hex, 5/16-24 x 3/4 (Qty. 1 used on 5 HP)
18	1921962	1	CAPSCREW, Hex Hd., 1/4-20 x 1-3/4
19	1928691	2	SETSCREW, Socket Hd., 5/16-18 x 5/16 (Qty. 1 used on Mfg. No. 1691414)
20	1931277	4	NUT, Hex, Flange Lock, 5/16-18

\* See your local Tecumseh dealer for parts & service.

**NOTE: Use Simplicity SAE 5W-30 Cold Weather Engine Oil. Part Number 1685576 (12 qts./case).**

NOTE A: Position Belt Guides 1/16" to 1/8" from Belt when Idler Arm is engaged.



NOTE B: Position Idler Pulleys (Ref. Nos. 25 & 8) to outside end of slot.

NOTE: Unless noted otherwise, use the standard hardware torque specification chart.

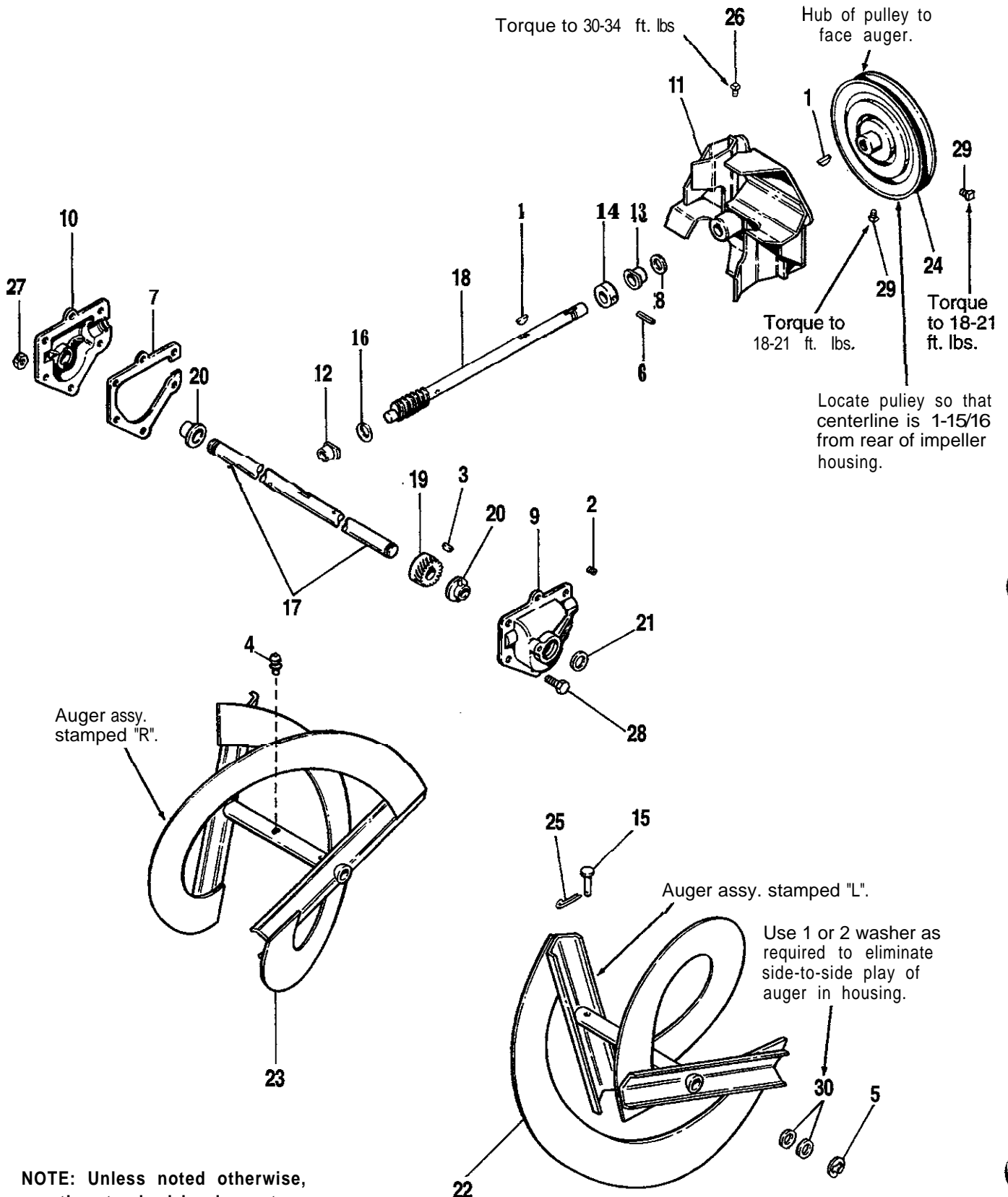


# All Models

## Frame

REF. NO.	PART NO.	QTY.	DESCRIPTION
1	174870	1	SPACER
2	916169	3	PIN, Roll
3	925160	2	RIVET
4	1608310	2	SPACER (7 HP only)
5	1611743	1	FRAME
6	1668477	1	PULLEY, Idler, Auger
7	1673911	1	SPRING, Brake Return
8	1674297	1	COVER, Belt
9	1674316	1	IDLER ARM & BRAKE ASSY. (Incl. Ref. Nos. 21 & 3)
10	1674315	1	GUIDE, Belt
11	1674318	1	IDLER ARM ASSY., Traction (5 HP only)
12	1674320	2	ROD, Idler
13	1675112	1	MOUNTING PLATE, Transmission
14	1675114	1	SUPPORT, Transmission
15	1676210	1	SPRING
16	1676219	1	BELT GUIDE, LH
17	1676220	1	BELT GUIDE, RH
18	1676442	1	PAN, Bottom
19	1676501	1	GUIDE, Shift
20	1676508	1	GUARD, Belt (5 HP only)
21	1676543	1	PAD, Brake
22	1677237	1	SPACER
23	1678694	1	IDLER ARM ASSY., Traction (7 HP only)
24	1678699	1	GUARD, Belt (7 HP only)
25	1685370	1	PULLEY, Idler (Incl. Ref. No. 1)
26	1919326	1	WASHER, 1 1/32
27	1921221	4	SCREW, Hex, 5/16-18 x 1-1/2 (5 HP only)
28	1921332	4	CAPSCREW, Hex Hd., 5/16-18 x 3/4 (7 HP only)
29	1921969	2	CAPSCREW, Hex, 3/8-16 x 1 -1/2
30	1924940	11	WASHER
31	1925003	9	SCREW, <b>Hex</b> , Taptite, 1/4-20 x 1/2 (Qty. 7 on 7 HP)
32	1928731	5	NUT, Hex, Jam 3/8-16
33	1930591	6	SCREW, Hex, Flange Lock, 5/16-18 x 3/4
34	1930595	2	SCREW, Hex, Flange Lock, 5/16-18 x 1-1/4
35	1930645	4	NUT, Hex, Flange Lock, 3/8-16
36	1930810	2	SCREW, Hex Hd., Taptite 1/4-20 x 1-1/2 (7 HP only)
37	1931277	4	NUT, Hex, Flange Lock, 5/16-18
38	1935255	8	PALNUT, 5/16-18

A-1313



**NOTE:** Unless noted otherwise, use the standard hardware torque specification chart.

# All Models

## Auger Drive

REF. NO.	PART NO.	QTY.	DESCRIPTION
1	905123	2	KEY, Woodruff, 3/16 x 3/4
2	917673	1	PLUG, Pipe, 1/8-NPT
3	918312	1	KEY, Woodruff
4	921133	2	GREASE FITTING
5	927794	2	RING, Retaining
6	936098	1	PIN, Drivelok, 3/16 x 1 -1/2
7	1611784	1	GASKET
8	1611789	1	SEAL, Oil
* 9	1611793	1	GEAR CASE ASSY., LH (Incl. Ref. No. 20, Qty. 1)
*10	1611794	1	GEAR CASE ASSY., RH (Incl. Ref. No. 20)
11	1611795	1	IMPELLER ASSY.
12	1666424	1	BUSHING
13	1666425	1	BUSHING
14	1668105	1	COLLAR, Thrust
15	1668344	2	PIN, Shear
16	1670971	1	WASHER, Thrust
17	1675161	1	AUGER, Shaft
18	1675162	1	WORM SHAFT
19	1676024	1	GEAR, Worm
20	1676026	2	BUSHING
21	1676027	2	SEAL, Oil
22	1676327	1	AUGER ASSY., LH (Incl. Ref. No. 4, Qty. 1)
23	1676328	1	AUGER ASSY., RH (Incl. Ref. No. 4, Qty. 1)
24	1679655	1	PULLEY, Input, Auger
25	1918447	2	PIN, Cotter, 3/4
26	1960474	1	SETSCREW, Sq. Hd., 3/8-16 x 1/2
27	1923358	6	NUT, Lock, 1/4-20
28	1924009	6	CAPSCREW, Hex, 1/4-20 x 7/8
29	1928721	2	SETSCREW, Sq. Hd., 5/16-18 x 1/2
30	1960114	AIR	WASHER

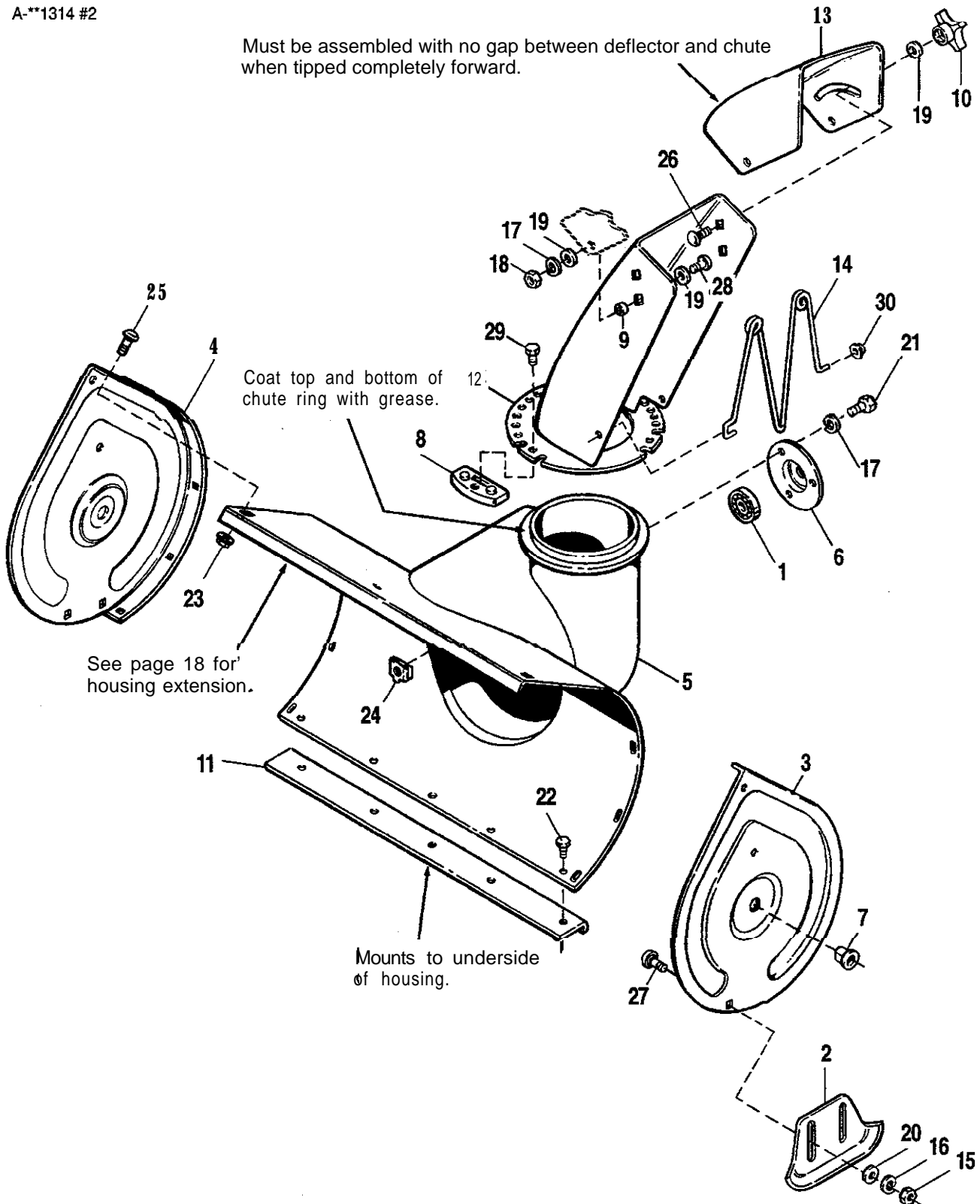
\* NOTE: Use Simplicity Brand Cold Weather Worm Gear Oil in Worm Gear Housing. 1-8 oz. bottle Part Number 1704838, Case of 12-8 oz. bottles, Part Number 1685406.

A/R = As Required.

# Auger, Housing & Chute

A-1314 #2

Must be assembled with no gap between deflector and chute when tipped completely forward.



NOTE: Unless noted otherwise, use the standard hardware torque specification chart.

## All Models

### Auger, Housing & Chute

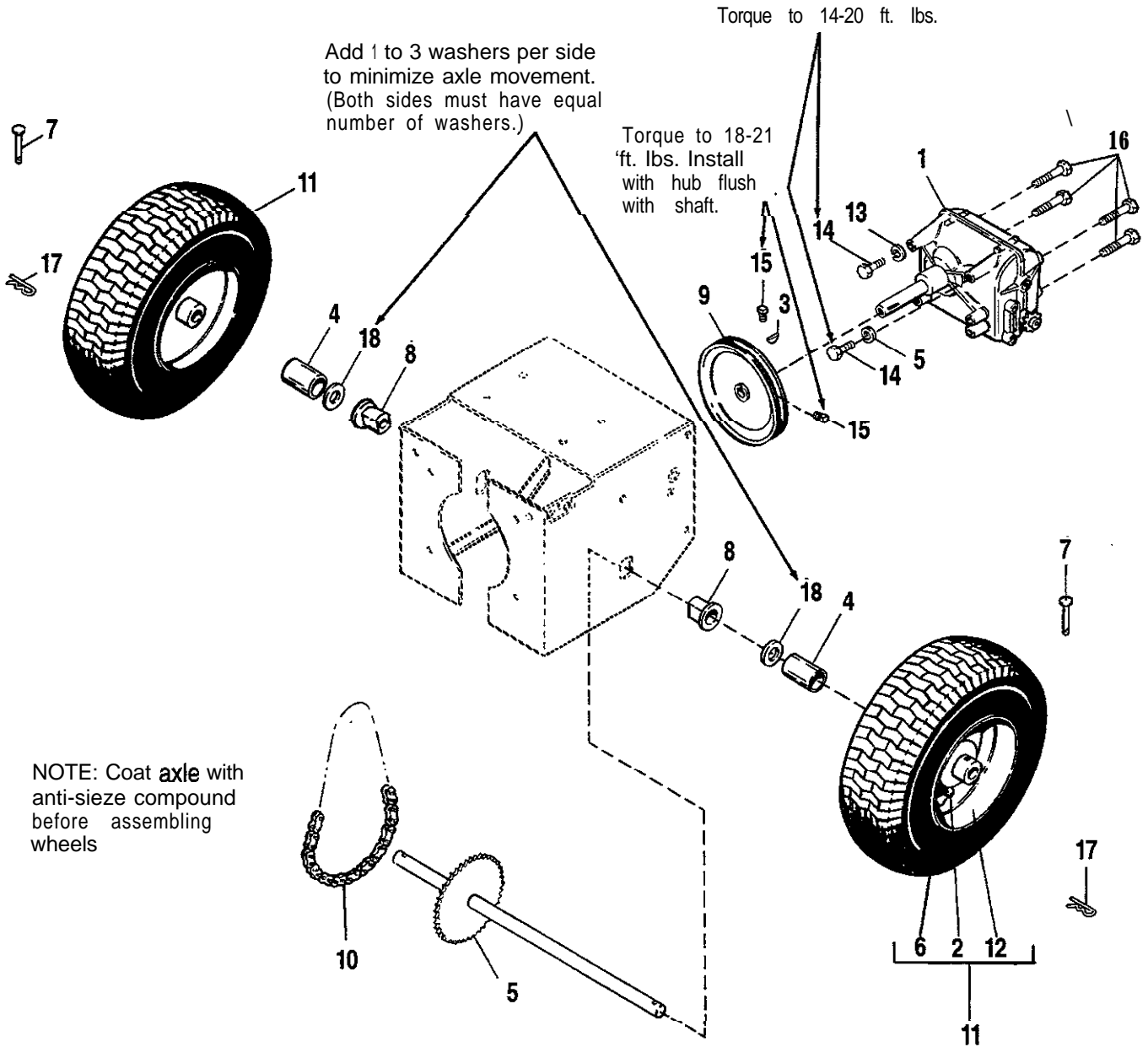
REF. NO.	PART NO.	QTY.	DESCRIPTION
1	108202	1	BEARING, Ball
*2	177434	2	SKID
3	1611746	1	AUGER HOUSING END, LH
4	1611747	1	AUGER HOUSING END, RH
5	1611798	1	AUGER HOUSING ASSY.
6	1665982	1	RETAINER, Bearing
7	1666001	2	BUSHING
8	1666613	2	HOLD DOWN, Chute
9	1667790	2	SPACER
IO	1670578	1	KNOB
11	1675080	1	SCRAPER BLADE
12	1676224	1	CHUTE ASSY.
13	1676379	1	DEFLECTOR
14	1678954	1	GUARD, Chute
15	1916950	4	NUT, Hex, 3/8-16
16	1916965	4	LOCKWASHER, 3/8
17	1917356	5	LOCKWASHER 5/1 6
18	1917372	2	NUT, Hex, 5/1 6-1 8
19	1919326	3	WASHER, 5/1 6
20	1924940	4	WASHER, 5/1 6
21	1925205	3	SCREW, Hex, 5/1 6-18 x 5/8
22	1927428	5	SCREW, Taptite, 1/4-20 x 3/8
23	1930641	8	NUT, Hex, Flange Lock, 1/4-20
24	1930659	3	NUT, Retainer, 5/1 6-1 8
25	1931315	8	CARRIAGE BOLT, 1/4-20 x 1/2
26	1931334	1	CARRIAGE BOLT, 5/16-18 x 7/8, Gr. 5
27	1931348	4	CARRIAGE BOLT, 3/8-1 6 x 3/4
28	1936482	2	SCREW, Phillips Hd., 5/16-18x 3/4
29	1960001	2	SCREW, Plastite, #1 0
30	1960140	1	NUT, Push

\*Set of two available under Part Number 1685501

# Wheels & Traction Drive

A-\*\*1315

Torque to  
14-20 ft. lbs.



NOTE: Unless noted otherwise, use the standard hardware torque specification chart.

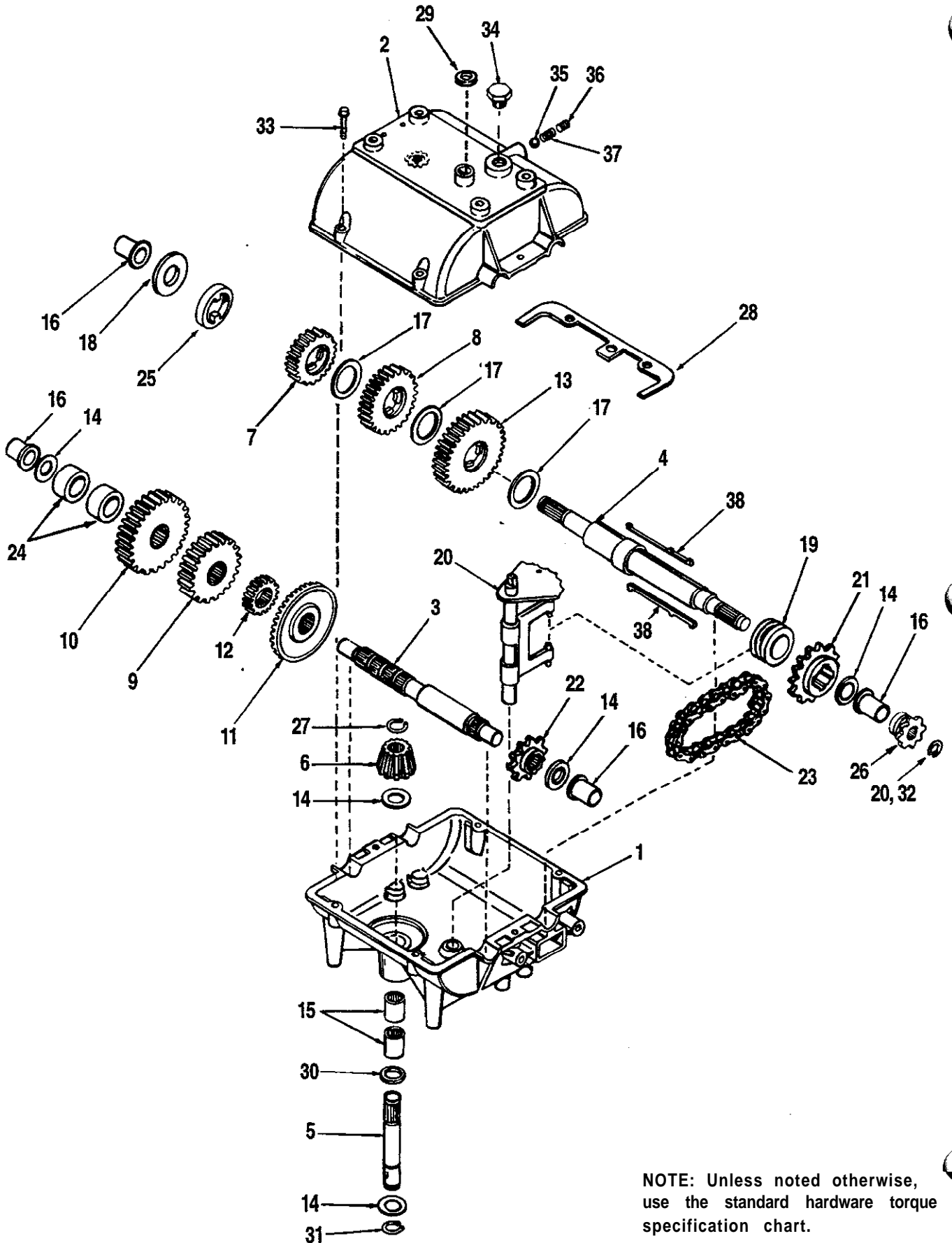
## All Models

### Wheels & Traction Drive

---

REF. NO.	PART NO.	QTY.	DESCRIPTION
1	*	1	TRANSMISSION
2	172353	2	VALVE STEM & CAP
3	930670	1	KEY, Woodruff, Hi Pro, 3/16 x 3/4
4	1611748	2	SPACER, Wheel
5	1611993	1	AXLE & SPROCKET ASSY.
6	1612001	2	TIRE, Snow Hog Tread, 4.1 O-6
7	1665994	2	PIN, Clevis
8	1666001	2	BUSHING, Wheel
9	1674306	1	PULLEY ASSY., Traction
10	1676381	1	DRIVE CHAIN
11	1714236	2	TIRE & WHEEL ASSY., (Incl. Ref. Nos. 2,6 & 12)
12	1714241	2	WHEEL, (Metallic Grey)
13	1917356	2	LOCKWASHER
14	1921332	2	CAPSCREW, Hex, 5/16-18 x 3/4
15	1930540	2	SETSCREW, Sq. Hd., 5/16-18 x 5/8
16	1930601	4	SCREW, Hex, Taptite, 5/16-18 x 5/8
17	1960074	2	CLIP, Hair Pin
18	1960114	2	WASHER

\* Peerless Transmission, Model 700-727 (see page 14-15 for parts breakdown). See an authorized Tecumseh dealer for parts and service.



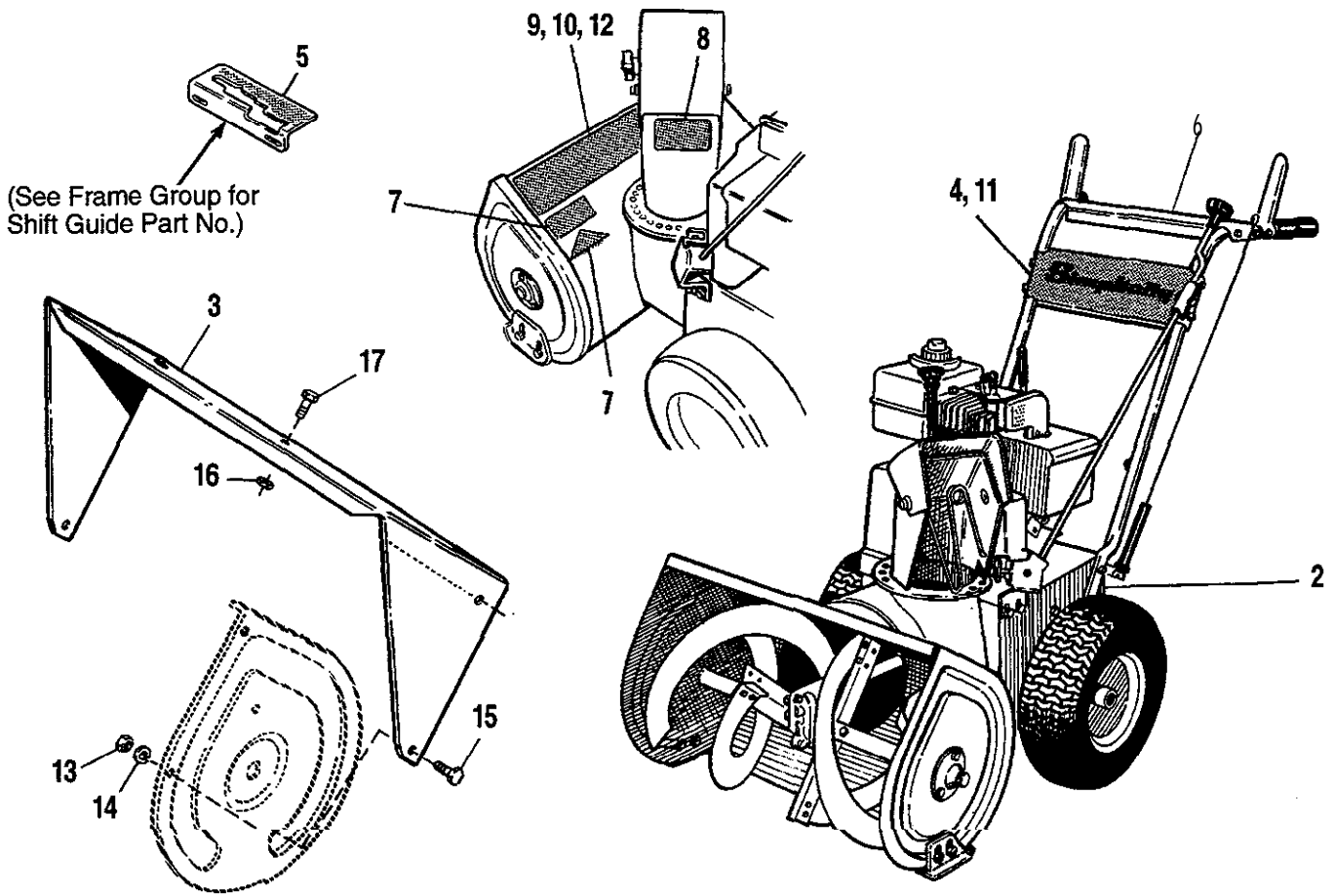


**All Models**

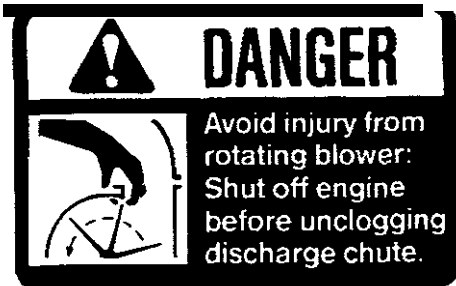
**Transmission - Peerless Model 700-027**

REF. NO.	PART NO.	QTY.	DESCRIPTION
1	770061	1	CASE, Transmission
2	772083	1	COVER, Transmission
3	776134	1	SHAFT, Counter
4	776162	1	SHAFT, Output & Brake
5	776203	1	SHAFT, Input
6	778113A	1	BEVEL PINION, Input
7	778121A	1	GEAR, Spur (20 teeth)
a	778124A	1	GEAR, Spur (30 teeth)
9	778126A	1	GEAR, Spur (20 teeth)
10	77/129A	1	GEAR, Spur (30 teeth)
11	778137A	1	GEAR, Bevel (42 teeth)
12	778145	1	GEAR, Spur (12 teeth)
13	778146A	1	GEAR, Spur (37 teeth)
14	780072	5	WASHER, Thrust
15	780086	2	BEARING, Needle
16	780105A	4	BUSHING, Flanged
17	780108	3	WASHER, Thrust
1a	780109	1	WASHER, Thrust
19	784266	1	COLLAR, Shift
20	784270	1	ROD & FORK ASSY., Shift
21	786060	1	SPROCKET (14 teeth)
22	786061	1	SPROCKET (10 teeth)
23	786062A	1	CHAIN, Roller (No. 41 chain, 22 links)
24	786071	2	SPACER (1-1/a" O.D. x 3/4" I.D. x 3/8" thick)
25	786072	1	SPACER (1-3/8" O.D. x 1/a" I.D. x 3/8" thick)
26	786136	1	SPROCKET, (a teeth)
27	788040	1	RING, Retaining
28	788054	2	GASKET
29	788069	1	SEAL, Square Cut
30	792001	1	"O" RING
31	792035	1	RING, Retaining
32	792072	1	RING, Retaining
33	792073	6	SCREW, Fl. Hex Hd., Thread Forming, 1/4-20 x 1 -1/4
34	792074	1	PLUG, Threaded
35	792077	1	BALL, Steel, 5/16"
36	792078	1	SCREW, Set, 3/8-1 6 x 3/a
37	792079	1	SPRING
38	792089A	2	KEY

**NOTE: See an authorized Tecumseh dealer for parts and service.**



SAFETY DECALS



Ref. No. 6



Ref. No. 7

**All Models**

**Decal & Wrapper Extension Group**

---



REF. NO.	PART NO.	QTY.	DESCRIPTION
1		1	DECAL, OPEI
2		1	I D. PLATE
3	1676631*	1	WRAPPER EXT
4	1674170	1	DECAL, Simplicity
5	1676667	1	DECAL, Shift Pattern
6	1676937	1	DECAL, Dash
7	1677485	1	DECAL, Danger, Auger
8	1677488	1	DECAL, Danger, Blower
9	1714107	1	DECAL, Simplicity 755
10	1714108	1	DECAL, Simplicity 555
11	1715066	1	DECAL, Baker
12	1715067	1	DECAL, Baker 7/22E
13	1916622	2	NUT, Hex, 1/4-20
14	1916964	2	LOCKWASHER, 1/4
15	1921958	2	CAPSCREW, 1/4-20 x 1/2
16	1930641	3	NUT, Hex, Flange, 1/4-20
17	1931315	3	CAPSCREW, 5/16-18 x 5/8

Not Shown:

1709061 1 DECAL, Touch-up Paint

\* This is standard equipment on Models 755 & 7/22E. It is optional for Model 555.

**TORQUE SPECIFICATIONS FOR  
STANDARD MACHINE HARDWARE  
(Tolerance ± 20%)**

SIZE	SAE GRADE #2		SAE GRADE #5 		SAE GRADE #8 	
	0					
	in/lbs Mbs	Nm.	in/lbs Mbs	Nm.	in/lbs Mbs	Nm.
8-32	19	2.1	30	3.4	41	4.6
8-36	20	2.3	31	3.5	43	4.9
1 0-24	27	3.1	43	4.9	60	6.8
1 0-32	31	3.5	49	5.5	68	7.7
1/4-20	66	7.6	8	10.9	12	16.3
1/4-28	76	8.6	10	13.6	14	19.0
5/16-18	11	15.0	17	23.1	25	34.0
5/16-24	12	16.3	19	25.8	27	34.0
3/8-16	20	27.2	30	40.8	45	61.2
3/8-21	23	31.3	35	47.6	50	68.0
7/16-14	30	40.8	50	68.0	70	95.2
7/16-20	35	47.6	55	74.8	80	108.8
1/2-13	50	68.0	75	102.0	110	149.6
1/2-20	55	74.8	90	122.4	120	163.2
9/16-12	65	88.4	110	149.6	150	204.0
9/16-18	75	102.0	120	163.2	170	231.2
5/8-11	90	122.4	150	204.0	220	299.2
5/8-18	100	136	180	244.8	240	326.4
3/4-10	160	217.6	260	353.6	386	525
3/4-16	180	244.8	300	408.0	420	571.2
7/8-9	140	190.4	400	544.0	600	816.0
7/8-14	155	210.8	440	598.4	660	897.6
1-8	220	299.2	580	788.8	900	1,243.0
1-12	240	326.4	640	870.4	1,000	1,360.0

**NOTES**

1. These torque values are to be used for all hardware excluding: locknuts, self-tapping screws, thread forming screws, sheet metal screws and socket head setscrews.
2. Recommended seating torque values for locknuts:
  - a. for prevailing torque locknuts - use 65% of grade 5 torques.
  - b. for flange whizlock nuts and screws - use 135% of grade 5 torques.
3. Unless otherwise noted on assembly drawings, all torque values must meet this specification.

# INDEX

Part No.	Ref. No. & Page No.	Part No.	Ref. No. & Page No.	Part No.	Ref. No. & Page No.	Part No.	Ref. No. & Page No.
108202	1-11	916964	4-3	1674318	11-7	1678600	13-5
121175	1-3	917673	2-9	1674320	12-7	1678692	14-5
172353	2-13	918312	3-9	1674325	8-5	1678694	23-7
174870	1-7	921133	4-9	1674328	10-5	1678696	27-3
176934	2-3	923341	5-3	1674329	11-3	1678699	24-7
177434	2-11	925160	3-7	1674580	12-3	1678925	15-5
770061	1-15	927794	5-9	1675080	12-11	1678938	28-3
772083	2-15	930670	3-13	1675112	13-7	1678939	29-3
776134	3-15	936098	6-9	1675114	14-7	1678954	17-11
776162	4-15	1608310	4-7	1675161	17-9	1679227	30-3
776203	5-15	1611743	5-7	1675162	18-9	1679228	31-3
778113A	6-15	1611746	3-11	1675339	9-5	1679655	24-9
778121A	7-15	1611747	4-11	1676024	19-9	1685370	25-7
778124A	8-15	1611748	4-13	1676026	20-9	1700886	32-3
778126A	9-15	1611784	7-9	1676027	21-9	1709061	*-17
778129A	10-15	1611789	8-9	1676210	15-7	1704682	33-3
778137A	11-15	1611793	9-9	1676219	16-7	1714084	34-3
778145	12-15	1611794	10-9	1676220	17-7	1714107	9-17
778146A	13-15	1611795	11-9	1676224	13-11	1714108	10-17
780072	14-15	1611798	5-11	1676252	13-3	1714236	11-13
780086	15-15	1611993	5-13	1676253	14-3	1714241	12-13
780105A	16-15	1612001	6-13	1676325	15-3	1715066	11-17
780108	17-15	1663430	6-3	1676327	22-9	1715067	12-17
780109	18-15	1665982	6-11	1676328	23-9	1916622	13-17
784266	19-15	1665994	7-13	1676379	14-11	1916950	18-11
784270	20-15	1666001	7-11	1676381	10-13	1916964	14-17
786060	21-15	1666001	8-13	1676390	16-3	1916965	19-11
786061	22-15	1666424	12-9	1676442	18-7	1917356	20-11
786062A	23-15	1666425	13-9	1676444	17-3	1917356	13-13
786071	24-15	1666613	8-11	1676450	18-3	1917372	21-11
786072	25-15	1667700	5-5	1676451	19-3	1918447	25-9
786136	26-15	1667790	9-11	1676452	20-3	1919326	35-3
788040	27-15	1668105	14-9	1676484	21-3	1919326	16-5
788054	28-15	1668188	7-3	1676485	22-3	1919326	26-7
788069	29-15	1668189	8-3	1676486	23-3	1919326	22-11
792001	30-15	1668344	15-9	1676501	19-7	1921221	37-3
792035	31-15	1668477	6-7	1676508	20-7	1921221	27-7
792072	32-15	1670578	10-11	1676543	21-7	1921319	36-3
792073	33-15	1670971	16-9	1676631	3-17	1921332	28-7
792074	34-15	1673911	7-7	1676667	5-17	1921332	14-13
792077	35-15	1674170	4-17	1676937	6-17	1921515	17-5
792078	36-15	1674177	9-3	1676954	24-3	1921958	15-17
792079	37-15	1674178	10-3	1677237	22-7	1921961	38-3
792089A	38-15	1674297	8-7	1677355	25-3	1921962	18-5
905121	3-5	1674306	9-13	1677356	26-3	1921969	29-7
905123	1-9	1674308	6-5	1677485	7-17	1922234	39-3
905850	4-5	1674311	9-7	1677488	8-17	1922837	40-3
916168	3-3	1674312	7-5	1677924	11-5	1923084	26-9
916169	2-7	1674315	10-7	1677925	12-5	1923358	41-3

# INDEX

<b>Part No.</b>	<b>Ref. No. &amp;PageNo.</b>	<b>Part No.</b>	<b>Ref. No. &amp; Page No.</b>	<b>Part No.</b>	<b>Ref. No. &amp; Page No.</b>	<b>Part No.</b>	<b>Ref. No. &amp; Page No.</b>
1923358	27-9	1927428	25-11	1930641	27-11	1931334	30-11
1923362	42-3	1928691	19-5	1930641	16-17	1931348	31-11
1924009	28-9	1928721	29-9	1930645	35-7	1935255	38-7
1924940	30-7	1928731	32-7	1930859	28-11	1936482	33-11
1924940	23-11	1930540	15-13	1930810	36-7	1960001	34-11
1925003	31-7	1930591	33-7	1931277	20-5	1960074	17-13
1925205	24-11	1930595	34-7	1931277	37-7	1960114	30-9
1926228	43-3	1930601	16-13	1931315	29-11	1960114	18-13
1927426	44-3	1930641	45-3	1931315	17-17	1960140	35-11



**Baker**<sup>TM</sup>

500 N. Spring Street, P.O. Box 997  
Port Washington, WI 53074-0997

TP-1415  
Printed in USA  
© 1995 10/95