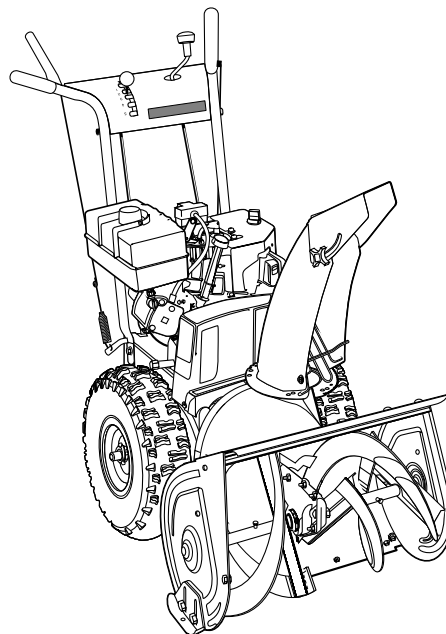




Parts Manual



Intermediate Walk-Behind Snowthrowers

7.5HP Snowthrowers

Mfg. No. Description

1694836	7555M, 7.5HP Snowthrower (MS)
1694837	7555EX, 7.5HP Snowthrower (MS) (CE)

8.5HP Snowthrowers

Mfg. No. Description

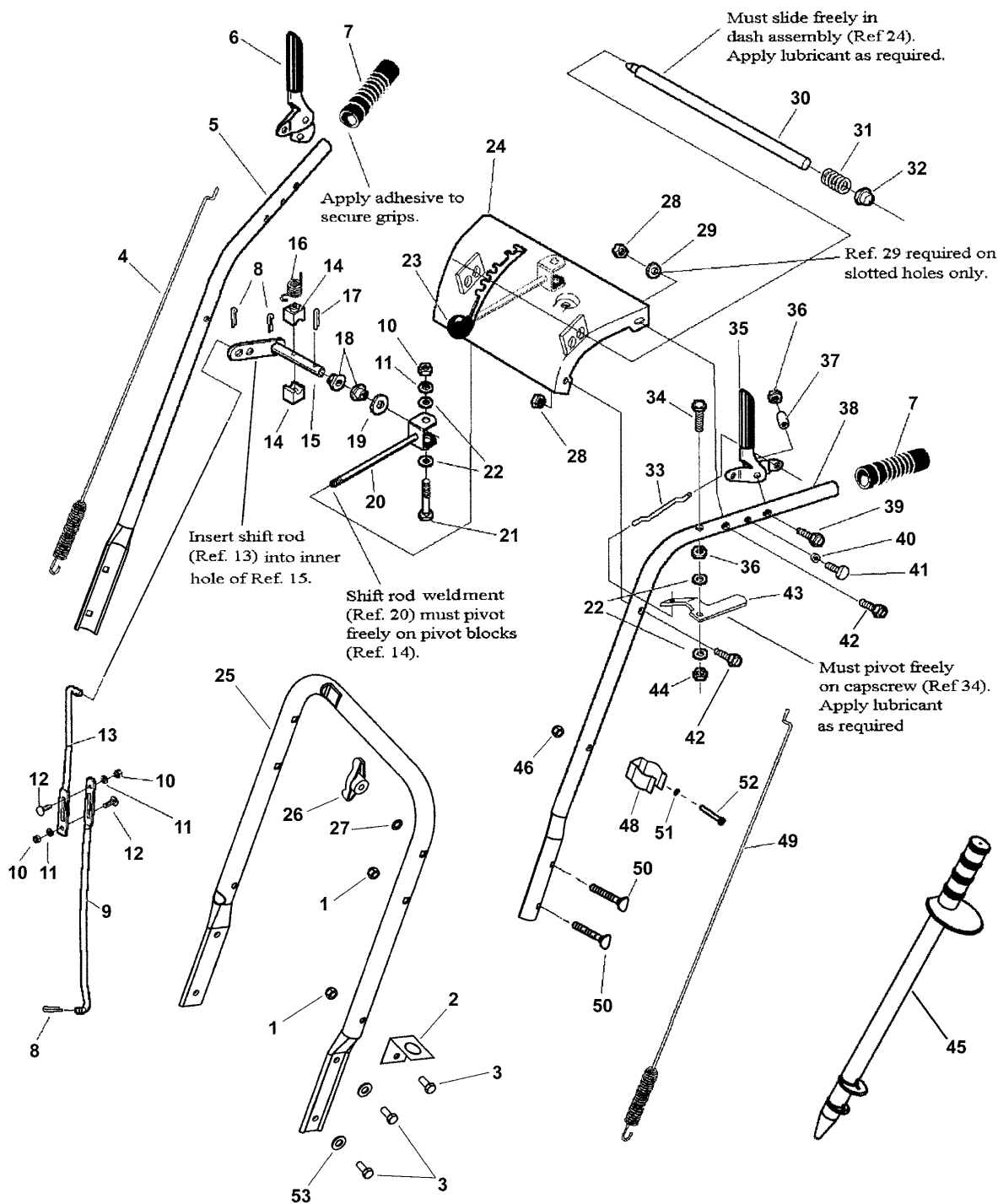
1694845	8560EI, 8.5HP OHV Snowthrower (ES)
1694846	8560EX, 8.5HP OHV Snowthrower (MS) (CE)

PRODUCT COMPONENTS	PAGES
Handles & Controls Group	4
Engine, Pulleys, & Frame Group - 7-1/2 & 8-1/2 HP Briggs	8
Auger & Impeller Group	12
Auger Housing Group	14
Traction Drive Group	16
Wheels & Tires Group	20
Decals Group	22
Chute Crank Control Group	24
Torque Specification Chart	Inside Back Cover

Handles & Controls Group

4248uhdc

NOTE: Unless noted otherwise,
use the standard hardware torque
specification chart.



The above parts group applies to the following Mfg. Nos.:

- 1694836 - 7555M
- 1694837 - 7555EX
- 1694845 - 8560EI
- 1694846 - 8560EX

Handles & Controls Group

REF NO	PART NO.	QTY.	DESCRIPTION
1	7091298	2	NUT, 5/16-18 Hex Nyloc
2	1726727	1	BRACKET, Snow Stick- Lower
3	1921332	4	SCREW, 5/16-18 x 3/4" Hex Head Cap
4	7027426	1	CLUTCH CABLE, Auger Drive- RH
5	1726574	1	HANDLE, Upper, Right Hand
6	1722638	1	GRIP, Clutch, RH
7	1726317	2	GRIP, Foam, Black
8	1722460	3	HAIR PIN
9	1666255	1	ROD, Shift, Lower
10	1916622	2	NUT, 1/4-20 2B Hex
11	1916964	3	LOCKWASHER, 1/4" Spring
12	1931317	2	BOLT, 1/4-20 x 2" Short Square Neck Carriage, GR 5
13	1720238	1	ROD, Upper, Shift
14	1668524	2	BLOCK, Pivot
15	1720240	1	WELDMENT, Shift Rod Pivot
16	1715123	1	SPRING, Compression
17	1918452	1	COTTER PIN, .125 x 1.00
18	1668185	2	BUSHING, .500 ID x .750 OD x .25
19	1924361	1	WASHER, 1/2" Flat (.531 ID x 1.250 OD x .08 Thick)
20	1668523	1	WELDMENT, Shift Rod
21	1960705	1	SCREW, 1/4-20 x 2-1/4" Hex Flange Lock
22	1921319	2	WASHER, .250 (.27 ID x .62 OD)
23	1726734	1	KNOB, Tapered - 3/8-16 Internal Thread- Red
24	1726983	1	WELDMENT, Dash
25	1726572	1	HANDLE, Lower
26	7035744	2	WING KNOB, 5/16-18
27	7090391	2	WASHER, 5/16" Internal Tooth Lock
28	1960686	4	NUT, 5/16-18 Hex Flange Nyloc
29	1919326	2	WASHER, .312 (.34 ID x .75 OD)
30	1722633	1	ASSEMBLY, Rod w/Pin (Includes Ref. Nos. 31, 47, 54, 55 & 56)
31	1722690	1	SPRING, Compression
32	1960519	1	PUSH NUT
33	1722630	1	ROD, Hold Down
34	1960662	1	SCREW, 1/4-20 x 2" Hex Head Cap, GR 5
35	1722667	1	GRIP, Clutch, LH
36	1923358	2	NUT, 1/4-20 Hex Centerlock
37	1715655	2	SPACER, Handle
38	1726573	1	HANDLE, Upper, Left Hand
39	1922837	2	SCREW, 1/4-20 x 1-1/2" Hex Head Cap
40	1715654	2	SPACER, .268 ID x .394 x .165
41	1960671	2	SCREW, 1/4-20 x 3/4" Pan Head Torx Self-Tap
42	1921221	5	SCREW, 5/16-18 x 1-1/2" Hex Head Cap, GR 5
43	1722631	1	LEVER, Pivot
44	1920397	2	NUT, 1/4-20 Hex Nyloc

Footnotes

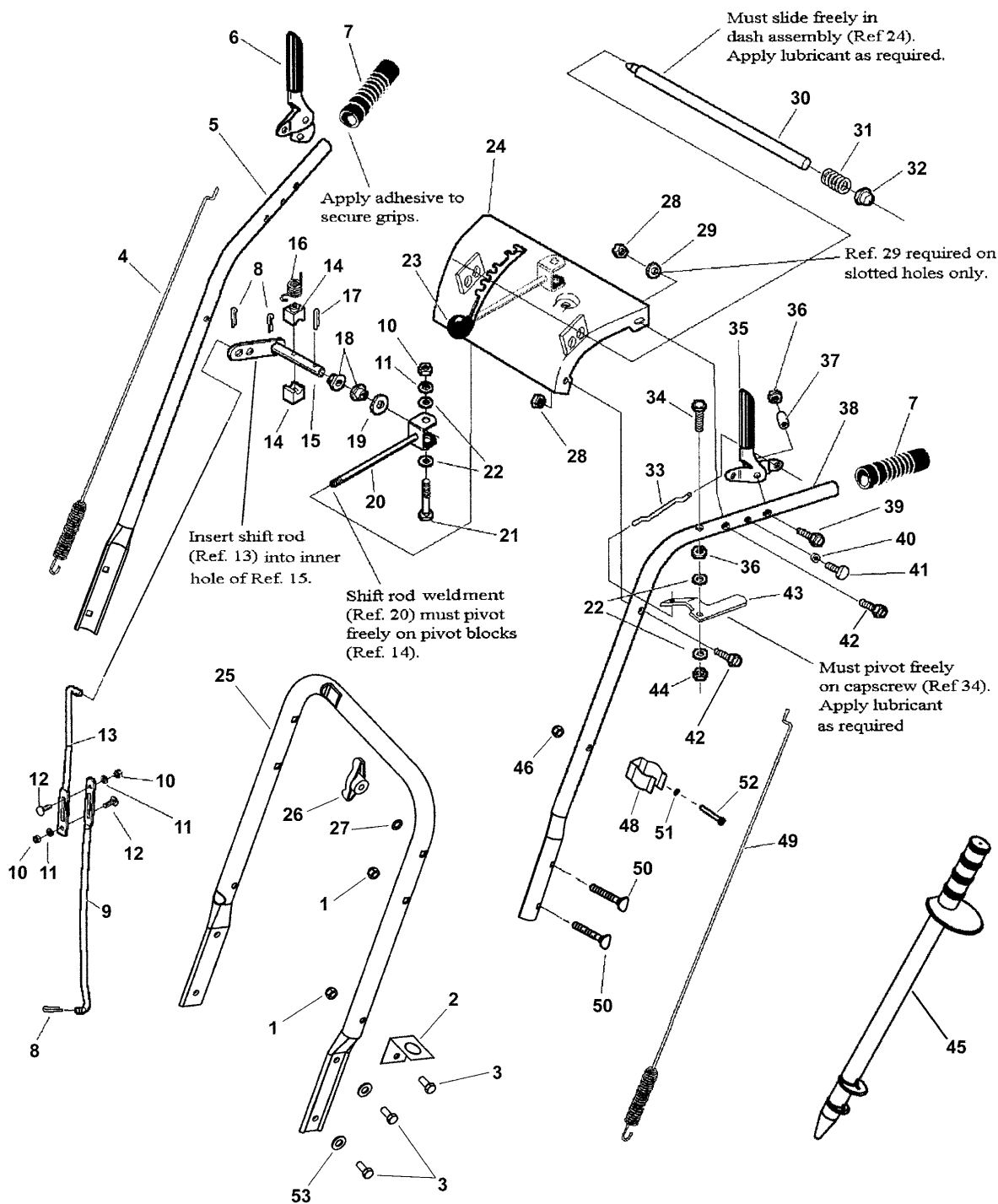
The above parts group applies to the following Mfg. Nos.:

1694836 - 7555M
1694837 - 7555EX
1694845 - 8560EI
1694846 - 8560EX

Handles & Controls Group

4248uhdc

NOTE: Unless noted otherwise, use the standard hardware torque specification chart.



The above parts group applies to the following Mfg. Nos.:

- 1694836 - 7555M
- 1694837 - 7555EX
- 1694845 - 8560EI
- 1694846 - 8560EX

Handles & Controls Group

REF NO	PART NO.	QTY.	DESCRIPTION
45	7075909	1	SNOW STICK
46	7091267	1	NUT, #10-24 Hex Center Lock
47	1722632	1	ROD, Hand Control (Not shown; Part of Ref> No. 30)
48	7071895	1	HOLDER, Snostik- Upper
49	7027425	1	CLUTCH CABLE, Ground Drive- LH
50	7091189	4	BOLT, 5/16-18 x 2" Curved Head Square Neck GR 2
51	7090011	1	WASHER, #10 Internal Tooth Lock
52	7091266	1	SCREW, #10-24 x 2" Hex Washer Head Machine, GR 5
53	1917356	4	LOCKWASHER, Spring .312
54	1722635	1	BUSHING, .250 ID x .375 OD x .750 (Not shown; Part of Ref> No. 30)
55	1722634	1	PIN, Clevis (Not shown; Part of Ref> No. 30)
56	1722613	1	SPRING, Compression (Not shown; Part of Ref> No. 30)

Footnotes

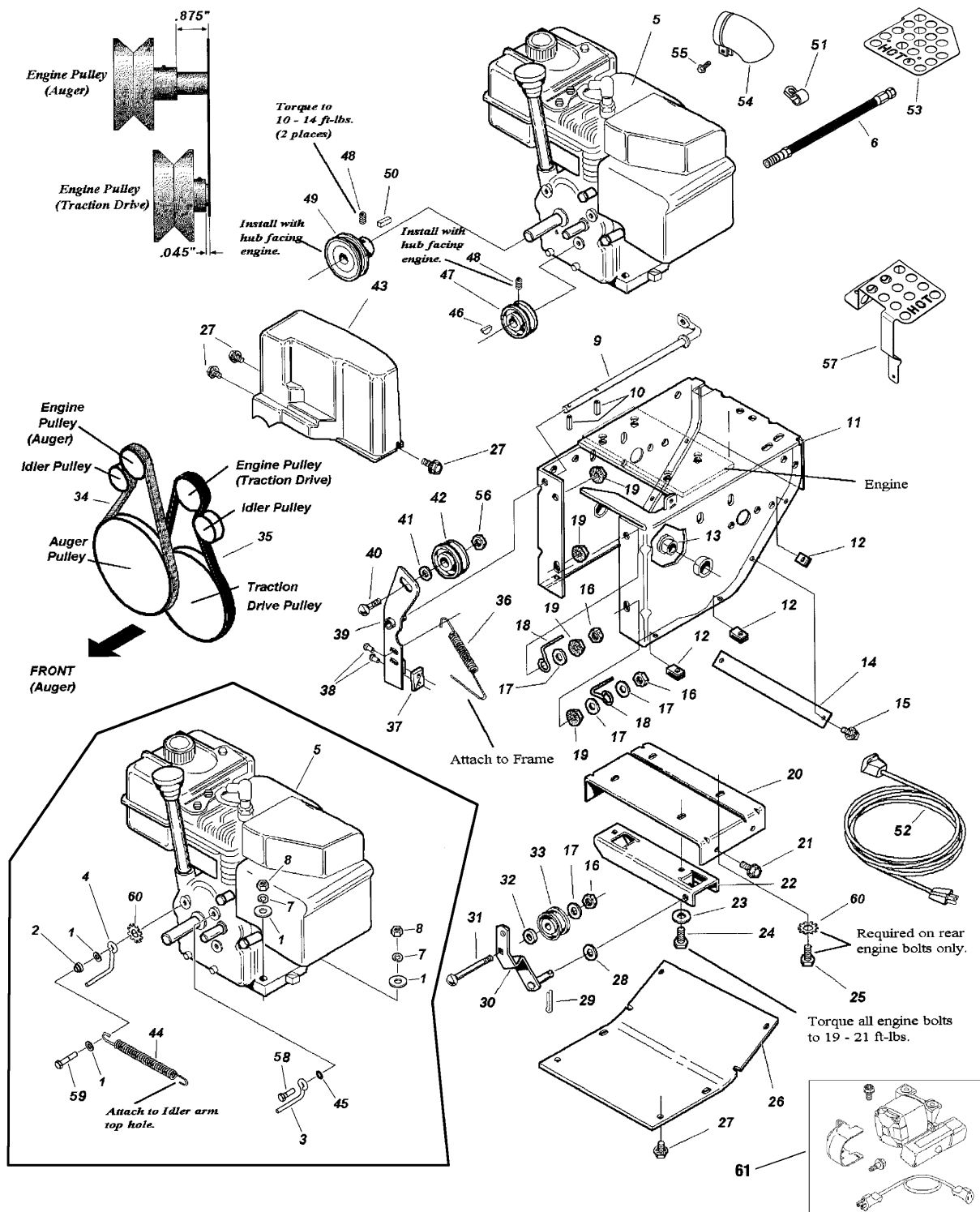
The above parts group applies to the following Mfg. Nos.:

1694836 - 7555M
1694837 - 7555EX
1694845 - 8560EI
1694846 - 8560EX

Engine, Pulleys, & Frame Group - 7-1/2 & 8-1/2 HP Briggs

4248epib

NOTE: Unless noted otherwise, use the standard hardware torque specification chart.



The above parts group applies to the following Mfg. Nos.:

- 1694836 - 7555M
- 1694837 - 7555EX
- 1694845 - 8560EI
- 1694846 - 8560EX

Engine, Pulleys, & Frame Group - 7-1/2 & 8-1/2 HP Briggs

REF NO	PART NO.	QTY.	DESCRIPTION
1	7090188	8	WASHER, 5/16" Flat
2	7012114	1	BUSHING, Differential Link
3	7100117	1	BELT GUIDE, LH, Traction Drive Belt
4	7100118	1	BELT GUIDE, RH, Traction Drive Belt
5	*	1	ENGINE, 7-1/2HP Briggs OHV (Model: 12D196, Type: 0110-E1)
5	*	1	ENGINE, 7-1/2HP Briggs OHV Euro (Model: 12D296, Type: 0113-E1)
5	*	1	ENGINE, 8-1/2HP Briggs Intek Mod 15 ES (Model: 15B194, Type: 0110-E1)
5	*	1	ENGINE, 8-1/2HP Briggs Intek Mod 15 Manual (Model: 15B196, Type: 0111-E1)
6	1726942	1	HOSE, Oil Drain
7	7090187	5	WASHER, 5/16" Split Lock
8	7090196	4	NUT, 5/16-18 Hex, GR 5 or B
9	1715092	1	ROD, Idler
10	2816169	2	ROLL PIN, 3/16 x 3/4"
11	7072566	1	WELDMENT, Intermediate Frame- Orange
12	1926018	6	SPEED NUT, 1/4-20 U-Type
13	1666001	2	BUSHING, 1.00 long
14	1715559	1	SUPPORT, Tie Bar
15	1929477	2	SCREW, #10-24 x 1/2" Hex Washer Self-Tap
16	1960251	4	JAM NUT, 3/8-16 Hex Center Lock
17	1924940	4	WASHER, 3/8" SAE Flat
18	1674315	2	ROD, Belt Guide
19	1960687	4	NUT, 3/8-16 Hex Nyloc
20	1715756	1	SUPPORT, Frame
21	1924856	4	SCREW, 5/16-18 x 1/2" Hex Washer Self-Tap
22	1715111	1	SUPPORT, Pivot
23	1919381	2	WASHER, 5/16" Flat
24	1922127	3	CAPSCREW, 5/16-18 x 1-3/4 Hex Head, G5
25	7027174	2	SCREW, 5/16-18 x 2" Hex Head Cap, GR 5
26	7072555	1	COVER, Bottom- Orange
27	7090362	9	SCREW, 1/4-20 x 5/8" Hex Washer Self-Tap
28	1925125	1	WASHER, 7/16" Flat
29	7091598	1	COTTER PIN, 1/8 x 3/4"
30	1725369	1	WELDMENT, Idler Arm
31	1960268	1	BOLT, 3/8-16 x 1-1/4" Short Square Neck Carriage, GR 5
32	2174870	1	SPACER, .377 ID x .75 OD x .312 Long
33	2118414	1	PULLEY, Idler
34	1717393	1	V-BELT, Auger Drive
35	1725371	1	V-BELT, Traction Drive
36	1715118	1	SPRING, Extension
37	1669313	1	PAD, Brake
38	2825160	2	RIVET, Blind
39	1717320	1	ASSEMBLY, Idler Arm w/Brake Pad (Includes Ref. Nos. 37 & 38)
40	7091158	1	BOLT, 3/8-16 x 1-3/4" Short Square Neck Carriage, GR 5

Footnotes

Note* See your local Briggs & Stratton distributor for parts and service.

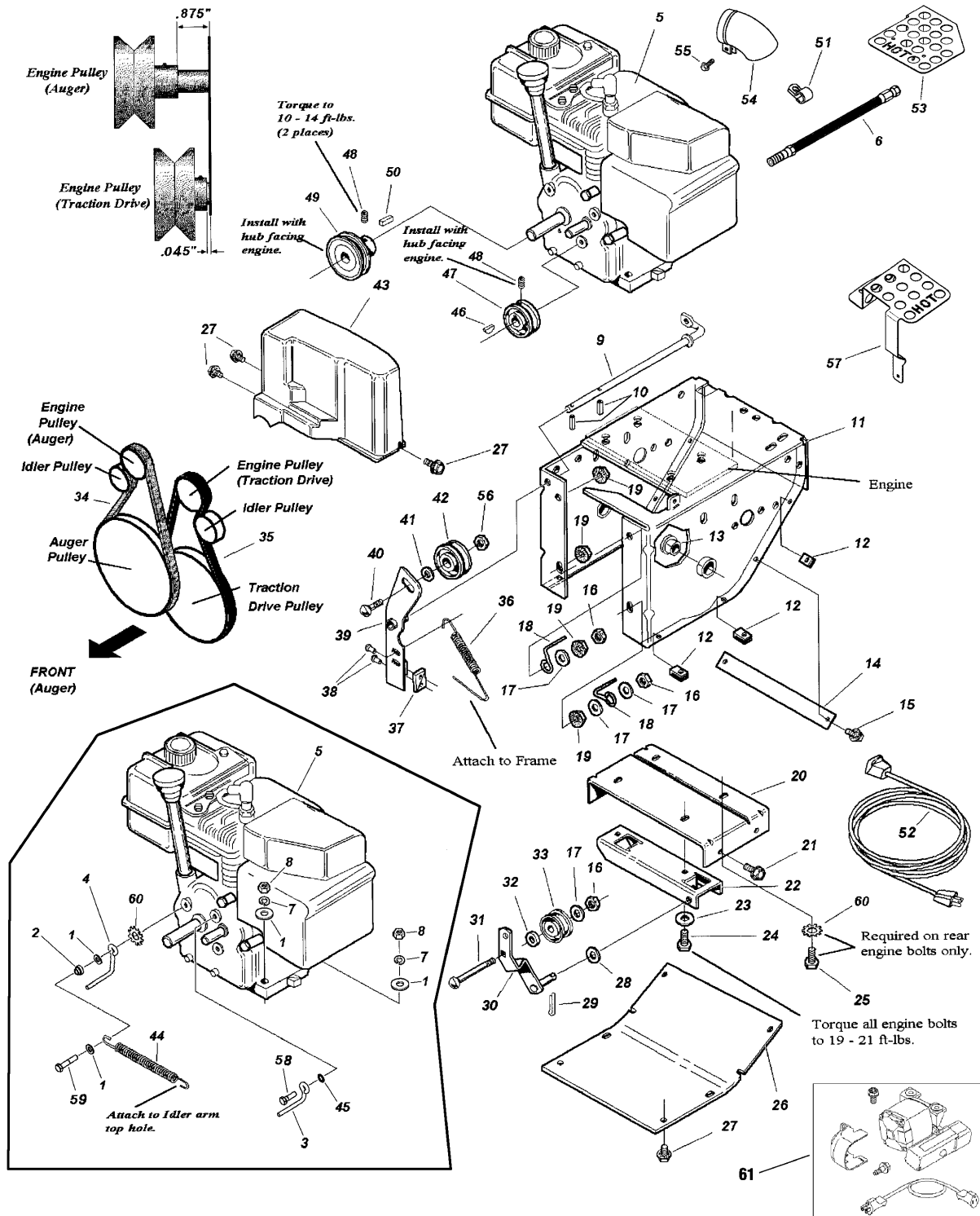
The above parts group applies to the following Mfg. Nos.:

1694836 - 7555M
 1694837 - 7555EX
 1694845 - 8560EI
 1694846 - 8560EX

Engine, Pulleys, & Frame Group - 7-1/2 & 8-1/2 HP Briggs

4248epib

NOTE: Unless noted otherwise, use the standard hardware torque specification chart.



The above parts group applies to the following Mfg. Nos.:

- 1694836 - 7555M
- 1694837 - 7555EX
- 1694845 - 8560EI
- 1694846 - 8560EX

Engine, Pulleys, & Frame Group - 7-1/2 & 8-1/2 HP Briggs

REF NO	PART NO.	QTY.	DESCRIPTION
41	1922755	1	WASHER, 3/8" Flat (.41 ID x 1.00 OD x .13 Thick)
42	1668477	1	PULLEY, Idler
43	1725379	1	COVER, Belt
44	2159106	1	SPRING, Extension, .562 O.D. x 4.250 Long
45	7090391	2	WASHER, 5/16" Internal Tooth Lock
46	2824819	1	KEY - Hi Pro .125 x .625 HP 504 SAE1035
47	1674325	1	PULLEY, V Groove
48	1960619	2	SET SCREW, 5/16-18 x 5/16" Hex Recess, Cup Point
49	1720313	1	PULLEY, 2.75 OD
50	7010061	1	KEY, 3/16 Square x 1"
51	7015861	1	HARNESS CLIP
52	1724064	1	CORD, Electric Start
53	1725665	1	GUARD, Muffler
54	1727032	1	MUFFLER, Deflector- B&S
55	1727033	1	HEX SCREW, Thread Rolling M4 x 0.7
56	1930645	1	NUT, 3/8-16 Hex Flange Lock Two Way
57	7300133	1	HEAT SHIELD, 7.5HP B&S Powerbuilt Muffler (Used on 7.5HP Models)
58	7090238	1	SCREW, 5/16-24 x 1" Hex Head Cap, GR 5
59	7091609	1	SCREW, 5/16-24 x 1-1/2" Hex Head Cap, GR 5
60	1920427	3	LOCKWASHER, 5/16" Exterior Tooth
61	7063366	1	KIT, Electric Start, 230 volt

Footnotes

Note* See your local Briggs & Stratton distributor for parts and service.

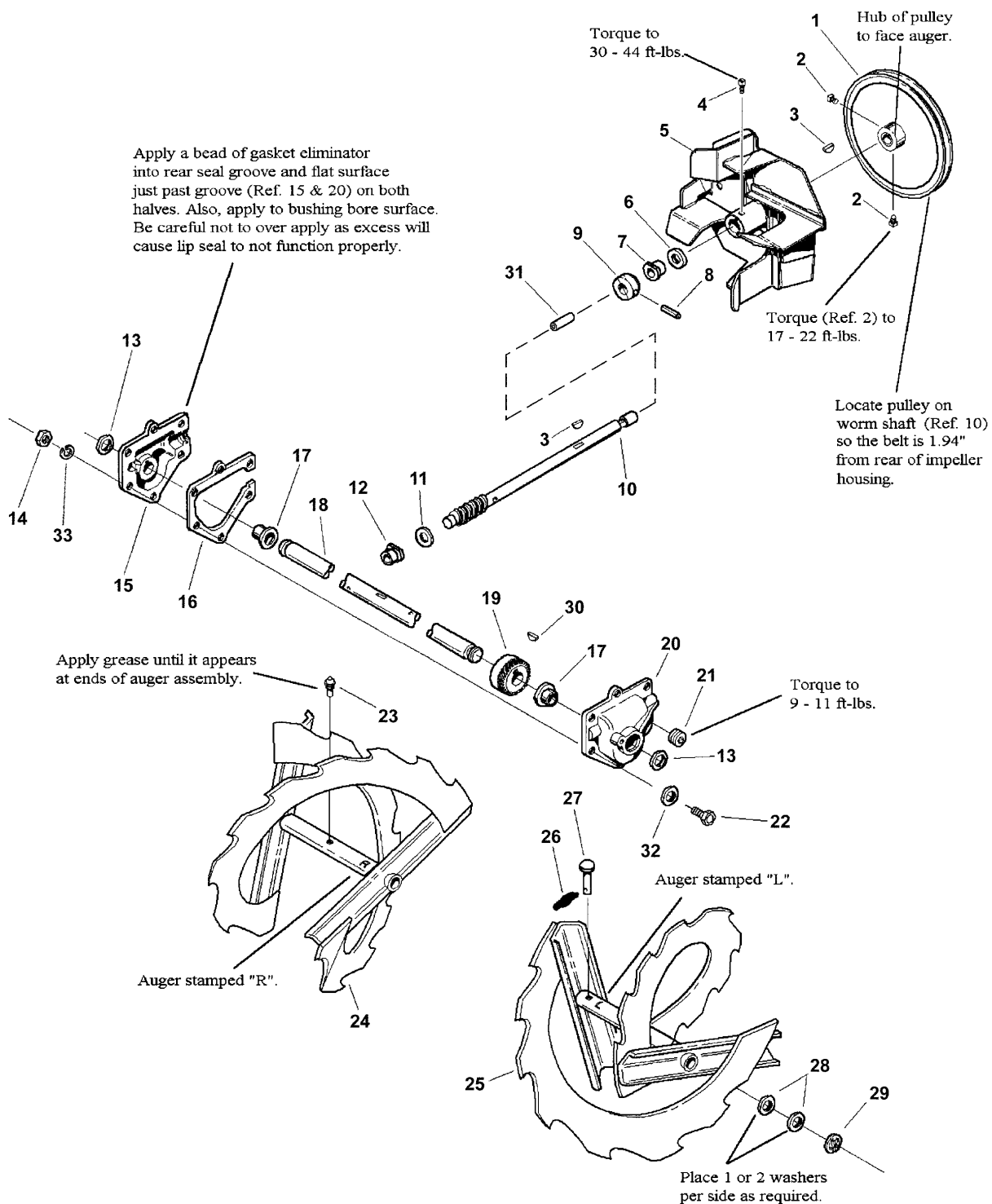
The above parts group applies to the following Mfg. Nos.:

1694836 - 7555M
1694837 - 7555EX
1694845 - 8560EI
1694846 - 8560EX

Auger & Impeller Group

4248aigc

NOTE: Unless noted otherwise, use the standard hardware torque specification chart.



The above parts group applies to the following Mfg. Nos.:

- 1694836 - 7555M
- 1694837 - 7555EX
- 1694845 - 8560EI
- 1694846 - 8560EX

Auger & Impeller Group

REF NO	PART NO.	QTY.	DESCRIPTION
1	1715091	1	PULLEY, Auger Input
2	1928721	2	SET SCREW, 5/16-18 x 1/2" Square Head Cup Point
3	7012699	2	KEY, 3/16 x 3/4" Woodruff
4	1960474	1	SET SCREW, 3/8-16 x 1/2" Square Head
5	1715120	1	WELDMENT, Impeller
6	1612093	1	OIL SEAL
7	1666425	1	BUSHING
8	2836098	1	PIN, Drive-Loc, 3/16 x 1-1/2"
9	1721680	1	COLLAR, Thrust
10	1715580	1	SHAFT, Rolled Worm
11	1670971	1	WASHER, Thrust (.562 ID x 1.000 OD x .030/.032 Thick)
12	1666424	1	FLANGE, Bushing
13	1676027	2	OIL SEAL
14	7091576	6	NUT 1/4-20 Hex
15	1726732	1	GEAR CASE, LH- Intermediate
16	1721676	1	GASKET, Gear Case
17	1676026	2	BUSHING
18	1726538	1	SHAFT, Auger, 22"/24"
19	1676024	1	GEAR, Worm
20	1726733	1	GEAR CASE, RH- Intermediate
21	7092128	1	PIPE PLUG, 1/8-27 NPTF 3/4 Taper x .31 Long Hex Drive
22	7092125	6	SCREW, 1/4-20 x 7/8" Hex Head Cap, GR 5
23	2821133	1	FITTING, Grease
24	1726536	1	WELDMENT, 22" Auger, RH
25	1726535	1	WELDMENT, 22" Auger, LH
26	7023590	2	COTTER PIN, 1/4" Self Locking
27	1668344	2	SHEAR PIN, .248 ID x 1-3/4" Long
28	1960114	4	WASHER
29	2827794	2	RING, External Retaining (for .75 dia. Shaft)
30	7015894	1	KEY, #605 Woodruff
31	1612112	1	TUBE, Low Density Polyethylene Extruded
32	7092127	12	FLAT WASHER, .268 ID x .591 OD x .063 Thick
33	7090052	6	WASHER, 1/4" Split Lock

Footnotes

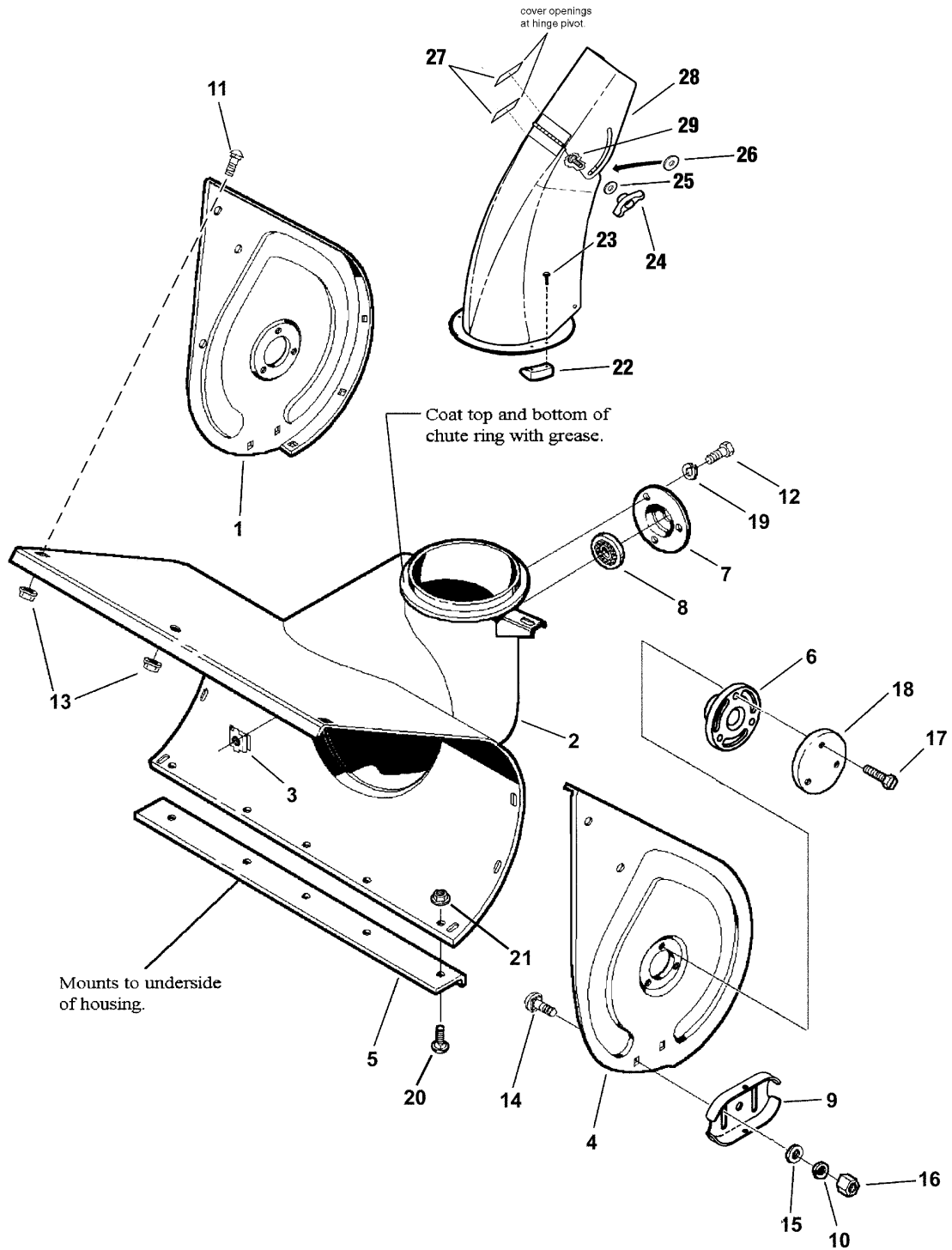
The above parts group applies to the following Mfg. Nos.:

1694836 - 7555M
 1694837 - 7555EX
 1694845 - 8560EI
 1694846 - 8560EX

Auger Housing Group

4248ch3p

NOTE: Unless noted otherwise,
use the standard hardware torque
specification chart.



The above parts group applies to the following Mfg. Nos.:

- 1694836 - 7555M
- 1694837 - 7555EX
- 1694845 - 8560EI
- 1694846 - 8560EX

Auger Housing Group

REF NO	PART NO.	QTY.	DESCRIPTION
1	7072543	1	END PLATE, RH- Auger Housing- Orange
2	7072548	1	WELDMENT, Auger Housing - 22" - Orange
2	7072568	1	WELDMENT, Auger Housing - 24" - Orange
3	1930659	3	RETAINER NUT, 5/16-18
4	7072546	1	END PLATE, LH- Auger Housing- Orange
5	1675080	1	BLADE, Scraper- 22"
5	1725352	1	BLADE, Scraper- 24"
6	1726457	2	BEARING, Auger
7	1665982	1	RETAINER, Bearing
8	2108202	1	BALL BEARING
9	7072553	2	SKID SHOE, Reversible- Orange
10	1916965	4	WASHER, 3/8" Split Lock
11	1931315	12	BOLT, 1/4-20 x 1/2" Short Square Neck Carriage, GR 5
12	1925205	3	SCREW, 5/16-18 x 5/8" Hex Head Cap, GR 5
13	1930641	12	NUT, 1/4-20 Hex Flange Lock Large
14	1960711	4	BOLT, 3/8-16 x 3/4" Square Neck Carriage
15	1924940	4	WASHER, 3/8" Flat
16	1960687	4	NUT, 3/8-16 Hex Nyloc
17	7091742	6	SCREW, 5/16-18 x 1" Hex Washer Self-Tap
18	7072551	2	CAP, Bearing, Orange
19	1917356	3	WASHER, 5/16" Split Lock
20	7091208	5	BOLT, 1/4-20 x 7/16" Short Square Neck Carriage, GR 5
21	7091065	5	NUT, 1/4-20 Hex Flange Lock
22	7011938	3	RETAINER, Spout
23	7091075	6	SCREW, #10-24 x 5/8" Hex Washer Self-Tap
24	7035744	1	WING KNOB, 5/16-18
25	7091076	2	WASHER, .34 x .69 x .08 Flat
26	2860210	1	WASHER, 3/8" Flat (Nylon)
27	7073599	1	ASSY, Decal/Steel Discharge Chute (Includes 7071880 Decal)
27	7074744	1	ASSY, Decal/Steel Discharge Chute (CE) (Includes 1727207 Decal)
28	7073192	1	WELDMENT, Steel Chute
29	1931333	1	BOLT, 5/16-18 x 3/4" Square Neck Carriage, GR 5

Footnotes

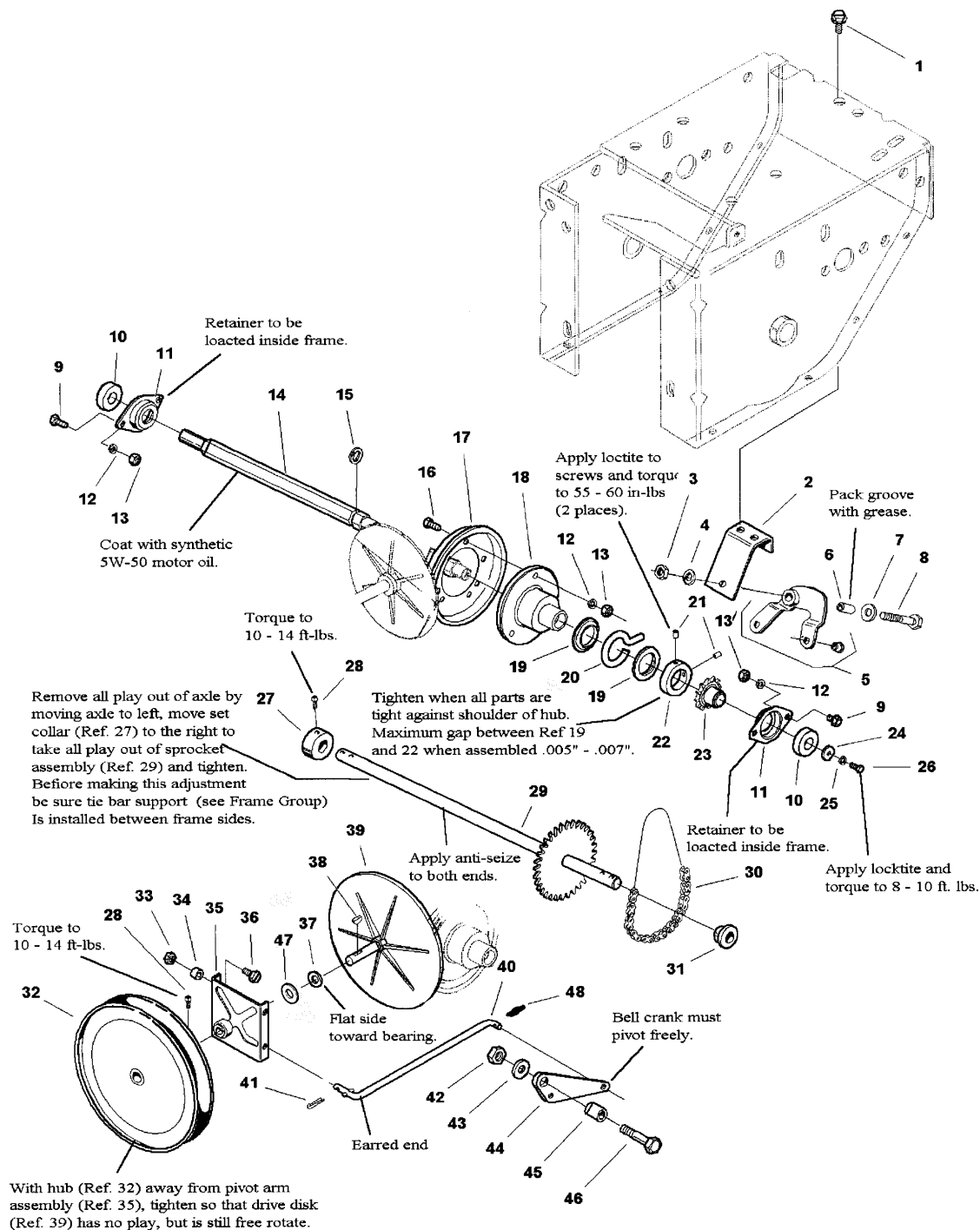
The above parts group applies to the following Mfg. Nos.:

1694836 - 7555M
1694837 - 7555EX
1694845 - 8560EI
1694846 - 8560EX

Traction Drive Group

NOTE: Unless noted otherwise, use the standard hardware torque specification chart.

4248tdg



The above parts group applies to the following Mfg. Nos.:

1694836 - 7555M
 1694837 - 7555EX
 1694845 - 8560EI
 1694846 - 8560EX

Traction Drive Group

REF NO	PART NO.	QTY.	DESCRIPTION
1	1930601	3	SCREW, 5/16-18 x 5/8" Hex Washer Self-Tap
2	1673994	1	BRACKET, Bushing
3	7091302	1	NUT, 3/8-16 Hex, GR 5 or B
4	1916965	1	WASHER, 3/8" Split Lock
5	1669256	1	ASSEMBLY, Shift Arm w/Bushing (Includes Ref. No. 51)
6	1666114	1	BUSHING, Spacer, .380 ID x .750 OD x 1.030 Long
7	1924940	1	WASHER, 3/8" SAE Flat
8	1923701	1	SCREW, 3/8-16 x 2" Hex Head Cap, GR 5
9	7091138	4	SCREW, 5/16-18 x 5/8" Hex Head Cap, GR 5
10	1722703	2	BALL BEARING, .669 ID x .574 OD
11	1667341	2	RETAINER, Bearing
12	1917356	4	LOCKWASHER, 5/16" Spring
13	1917372	7	NUT, 5/16-18 Hex, GR B or 5
14	7072432	1	HEX SHAFT
15	2827794	1	RING, External Retaining (for 3/4 Dia Shaft)
16	1921332	3	SCREW, 5/16-18 x 3/4" Hex Head Cap
17	1725428	1	DRIVEN DISC
18	1665995	1	HUB, Friction Disc
19	1678956	2	COLLAR, Thrust
20	1666207	1	PIN, Slide
21	1724333	2	SET SCREW, 1/4-20 x 1/2 w/Patch Lock
22	1667335	1	COLLAR, Set, 1.251 ID x 2.00 OD x .50 Long
23	7072459	1	SPROCKET #35, 12 Tooth
24	1960353	1	WASHER, 1/4 ID x 5/8 OD x .134/.109 Flat
25	1916964	1	LOCKWASHER, 1/4" Spring
26	1923341	1	SCREW, 1/4-20 x 3/4" Hex Head Cap, GR 5
27	1729254	1	COLLAR, Set, .756 ID x 1.249 OD x .50
28	1928721	2	SET SCREW, 5/16-18 x 1/2" Square Head Cup Point
29	7072474	1	WELDMENT, Axle & Sprocket
30	7072491	1	CHAIN, Roller, #35, 25.5" Long
31	1715101	1	BUSHING
32	1715253	1	PULLEY, Traction
33	1935048	2	NUT, 5/16-18 Large Head Center Lock
34	1665844	2	SPACER, .328 ID x .562 OD x .144/.149 Thick
35	1726778	1	ASSEMBLY, Pivot Plate/Hub w/Bearing (Includes Ref. Nos. 49 & 50)
36	1925205	2	SCREW, 5/16-18 x 5/8 Hex Head Cap, GR 5
37	1666379	1	WASHER
38	7091214	1	KEY, Hi-Pro, #HP-506
39	1719879	1	DRIVE DISC, w/ Spindle
40	1715131	1	ROD, Pivot
41	7091598	1	COTTER PIN, 1/8 x 3/4"
42	1919438	1	NUT, 5/16-18 Hex Nyloc Light
43	1919326	2	WASHER, .312 (.34 ID x .75 OD)
44	1700473	1	BELLCRANK

Footnotes

The above parts group applies to the following Mfg. Nos.:

1694836 - 7555M

1694837 - 7555EX

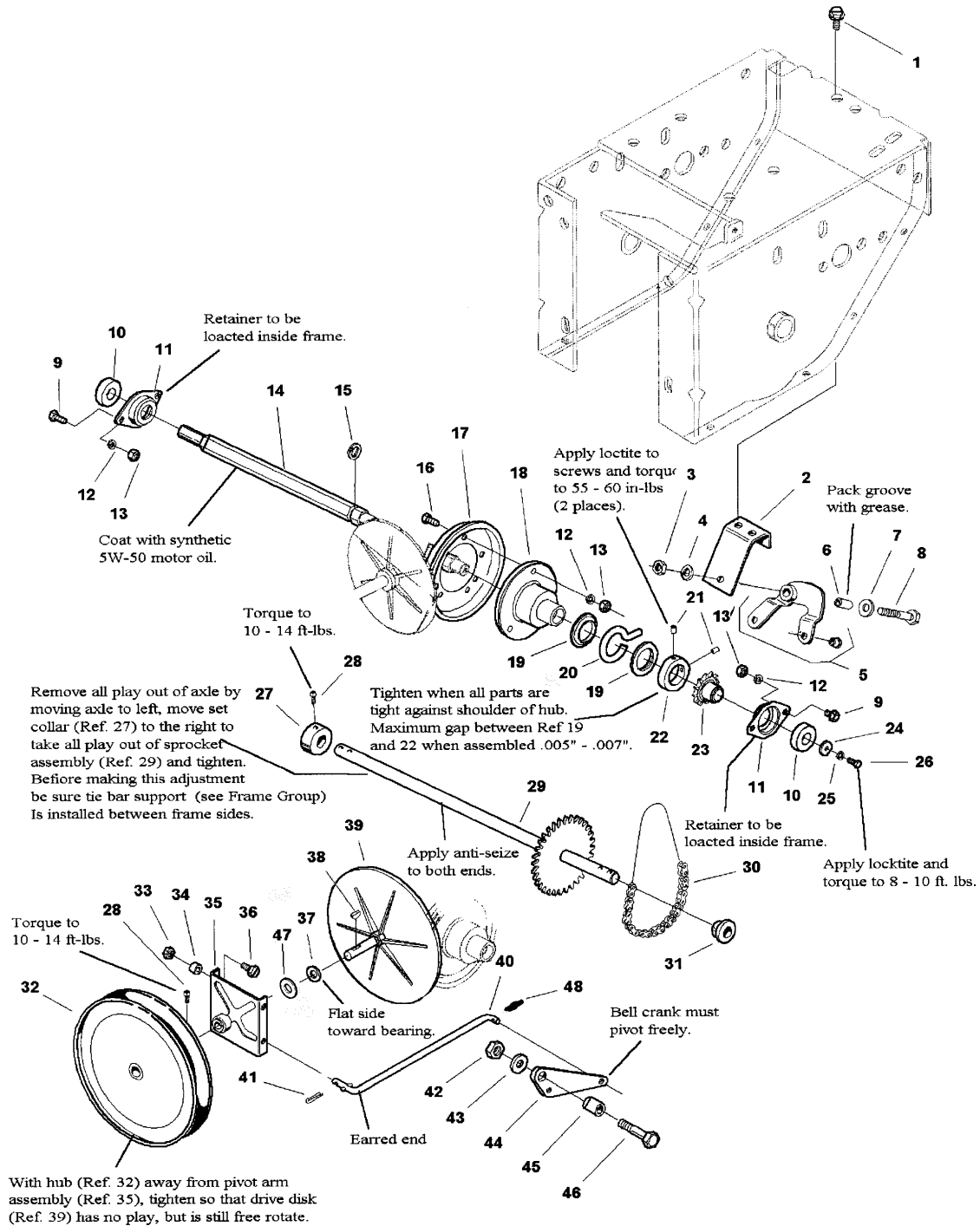
1694845 - 8560EI

1694846 - 8560EX

Traction Drive Group

4248tdg

NOTE: Unless noted otherwise, use the standard hardware torque specification chart.



The above parts group applies to the following Mfg. Nos.:

- 1694836 - 7555M
- 1694837 - 7555EX
- 1694845 - 8560EI
- 1694846 - 8560EX

Traction Drive Group

REF NO	PART NO.	QTY.	DESCRIPTION
45	1666106	1	BUSHING
46	1922127	1	SCREW, 5/16-18 x 1-3/4 Hex Head Cap, GR 5
47	1924366	1	WASHER, Plain, .75 ID x 1.31.OD x .10
48	7091593	1	COTTER PIN, 3/8" Self Lock
49	1666855	1	BUSHING (Not Shown)
50	1665521	1	BEARING (Not Shown)
51	1669255	1	BUSHING (Not Shown)

Footnotes

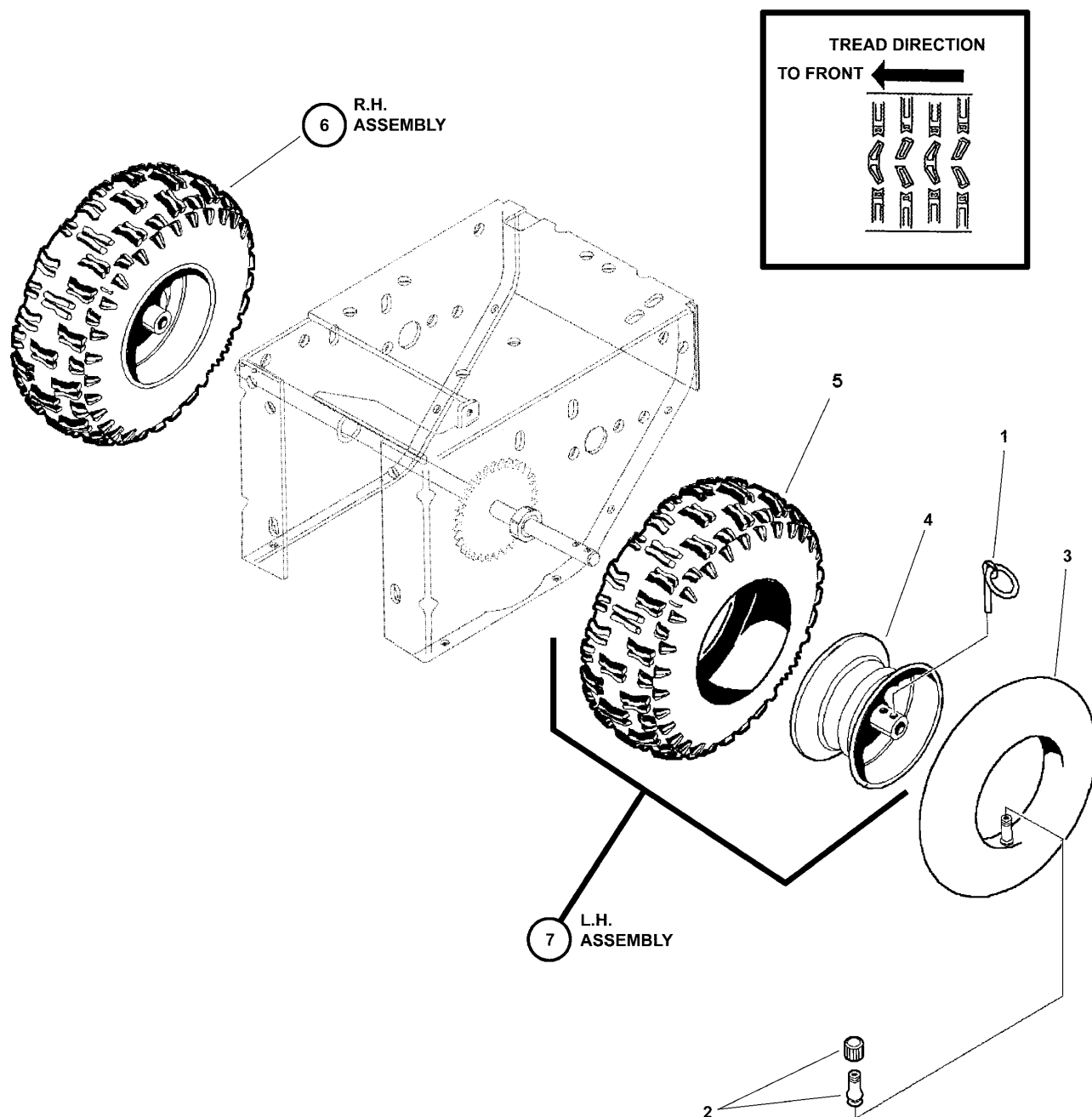
The above parts group applies to the following Mfg. Nos.:

1694836 - 7555M
1694837 - 7555EX
1694845 - 8560EI
1694846 - 8560EX

Wheels & Tires Group

4248wheel

NOTE: Unless noted otherwise,
use the standard hardware torque
specification chart.



The above parts group applies to the following Mfg. Nos.:

1694836 - 7555M
1694837 - 7555EX
1694845 - 8560EI
1694846 - 8560EX

Wheels & Tires Group

REF NO	PART NO.	QTY.	DESCRIPTION
1	1666969	2	KLIK- PIN, .310 ID x 1-3/4" Long
2	0172353	1	VALVE STEM AND CAP per tire assembly
3	1664090	1	TUBE, Tire per tire assembly (Optional)
4	1723286	1	RIM, 6 x 3.25 (Weldment) per tire assembly
5	7026169	1	TIRE, 15 x 5.00-6, 2 Ply, Carlisle X-Trac per tire assembly
6	1726747	1	ASSY, Tire and Wheel, 15 x 5.00-6 Carlisle X-Trac, RH (Includes Ref. Nos. 2, 4 & 5)
7	1726746	1	ASSY, Tire and Wheel, 15 x 5.00-6 Carlisle X-Trac, LH (Includes Ref. Nos. 2, 4 & 5)

Footnotes

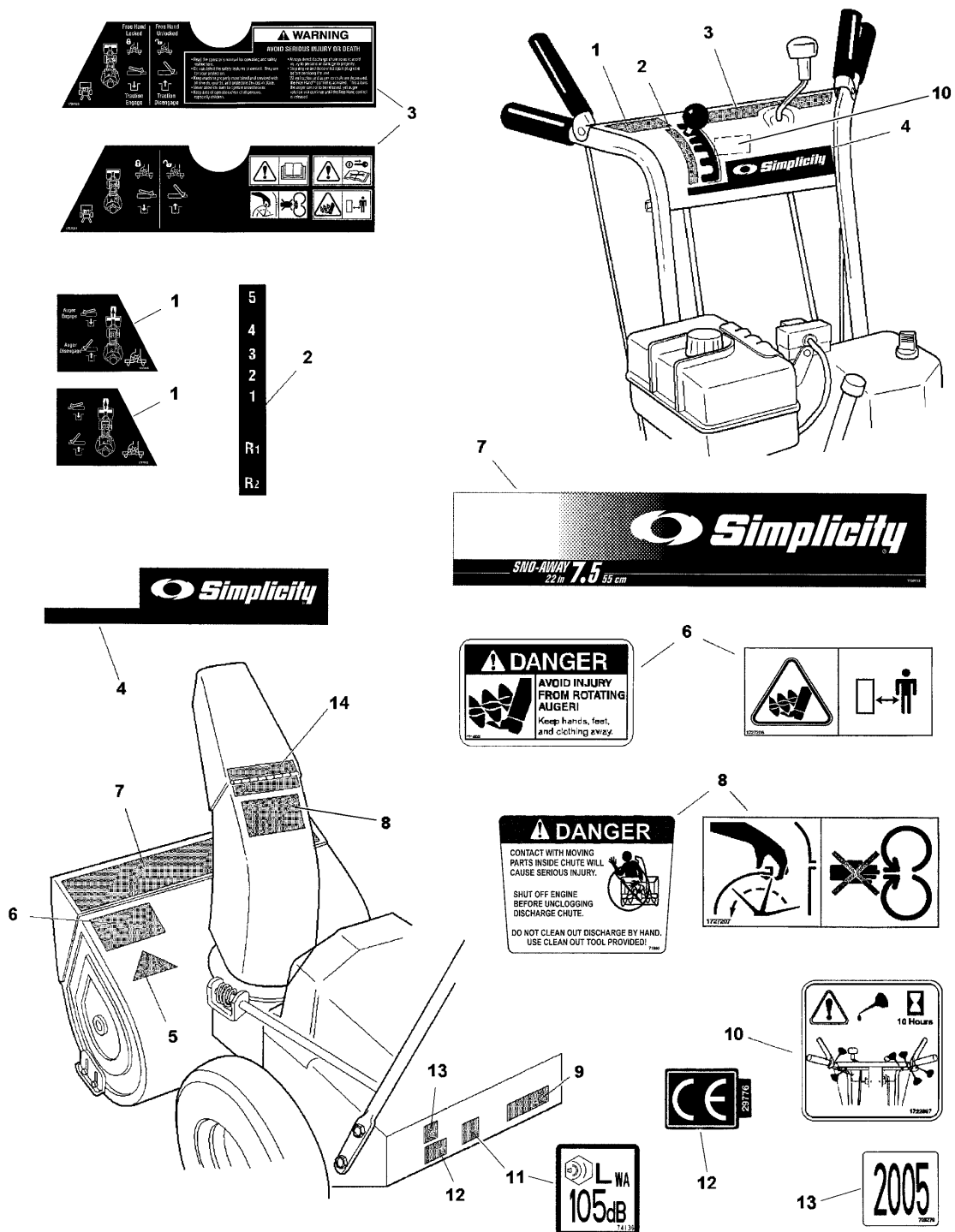
The above parts group applies to the following Mfg. Nos.:

1694836 - 7555M
1694837 - 7555EX
1694845 - 8560EI
1694846 - 8560EX

Decals Group

NOTE: Unless noted otherwise, use the standard hardware torque specification chart.

4248dc1



The above parts group applies to the following Mfg. Nos.:

1694836 - 7555M
 1694837 - 7555EX
 1694845 - 8560EI
 1694846 - 8560EX

Decals Group

REF NO	PART NO.	QTY.	DESCRIPTION
1	1726946	1	DECAL, Dashboard- RH (Used on Domestic Models)
1	1727023	1	DECAL, Dashboard- RH- Euro
2	1715557	1	DECAL, Shift Pattern
3	1727020	1	DECAL, Dashboard- LH (Used on Domestic Models)
3	1727021	1	DECAL, Dashboard- LH- Euro
4	1715558	1	DECAL, Dash Front - Simplicity
5	*	1	DECAL, OPEI (Not Serviced)
6	1716532	1	DECAL - Danger, Auger (Used on Domestic Models)
6	1727208	1	DECAL, CE- Auger Warning (Used on CE Models)
7	7100115	1	DECAL, Stripe- Simplicity (7.5hp, 22")
7	7100120	1	DECAL, Stripe- Simplicity (8.5hp, 24") (Not Shown)
8	7071880	1	DECAL, Danger, Chute/Deflector (Used on Domestic Models)
8	1727207	1	DECAL, Chute Warning (Used on CE Models)
9	*	1	I.D. Tag (Not Serviced)
10	1722867	1	DECAL, Lube- Controls
11	7074136	1	DECAL, Sound 105
12	7029776	1	DECAL, Euro Community (CE)
13	7011279	1	DECAL, 2005 Year of Manufacture
14	1706085	2	DECAL- Hinge (Orange)

Footnotes

Note* Not a serviceable part.

The above parts group applies to the following Mfg. Nos.:

1694836 - 7555M
1694837 - 7555EX
1694845 - 8560EI
1694846 - 8560EX

Chute Crank Control Group

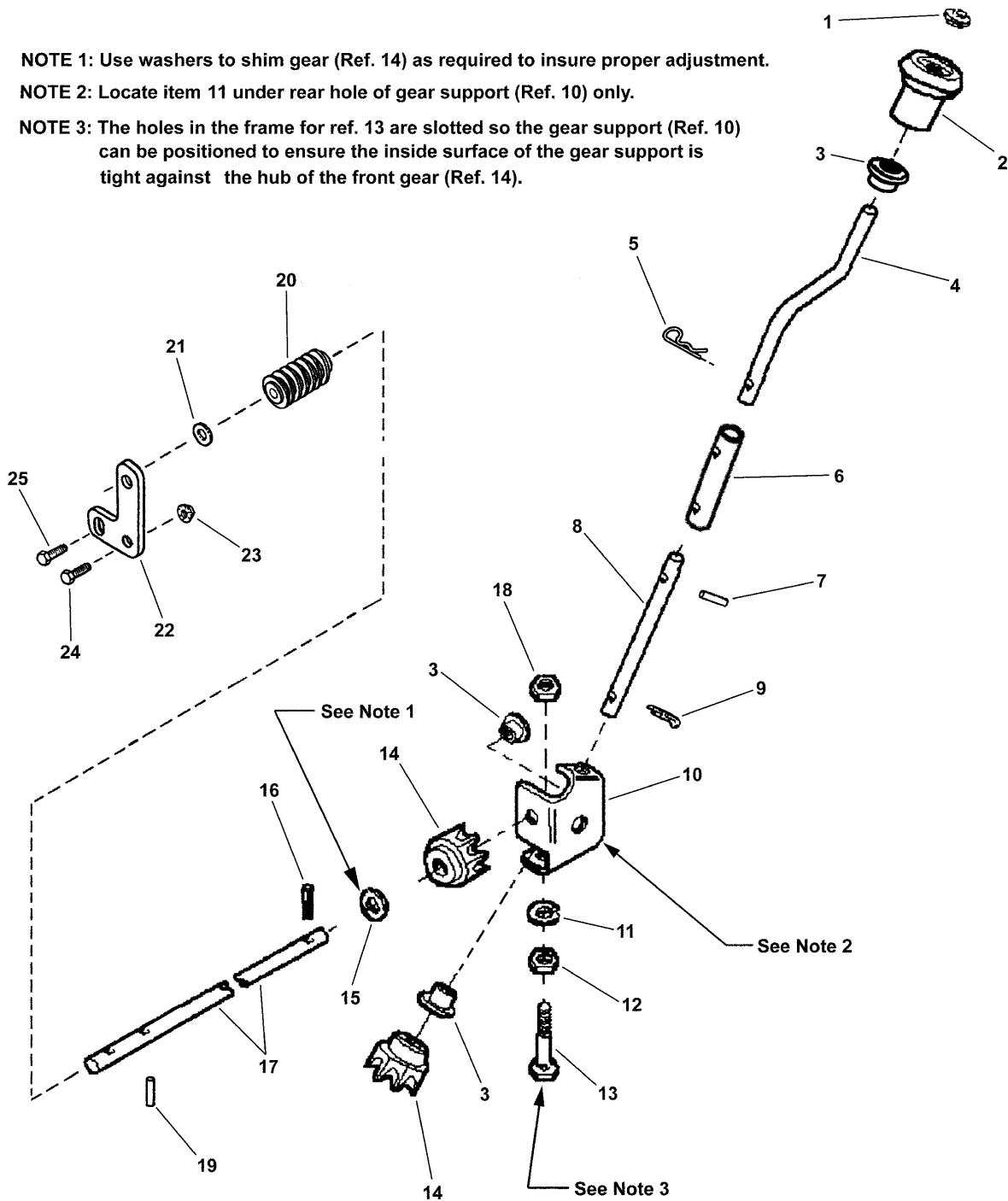
4248ccc

NOTE: Unless noted otherwise,
use the standard hardware torque
specification chart.

NOTE 1: Use washers to shim gear (Ref. 14) as required to insure proper adjustment.

NOTE 2: Locate item 11 under rear hole of gear support (Ref. 10) only.

NOTE 3: The holes in the frame for ref. 13 are slotted so the gear support (Ref. 10)
can be positioned to ensure the inside surface of the gear support is
tight against the hub of the front gear (Ref. 14).



The above parts group applies to the following Mfg. Nos.:

1694836 - 7555M
1694837 - 7555EX
1694845 - 8560EI
1694846 - 8560EX

Chute Crank Control Group

REF NO	PART NO.	QTY.	DESCRIPTION
1	1960093	1	PUSH NUT, Pal. .375 Dia. Stud Cap
2	1714084	1	KNOB, Spinner
3	1667588	3	BUSHING, .376 x .437 x .20
4	7028152	1	ROD, Chute, Upper
5	1960074	1	CLIP, .093 Dia. Hair Pin
6	1720577	1	SPLICE, Chute Handle
7	1926228	1	SPRING PIN, .156 x 1.000
8	1726939	1	ROD, Chute Lower
9	1918452	1	COTTER PIN, .125 x 1.00
10	1718793	1	BRACKET, Universal Gear
11	1921319	3	WASHER, .250 (.27 ID x .62 OD)
12	1960518	2	RETAINER, 1/4" Bolt
13	1960252	2	BOLT, 1/4-20 x 5/8" Short Square Neck Carriage, GR 5
14	1718593	2	GEAR, Universal
15	1960103	1	WASHER, 3/8" Flat- Black
16	1916168	1	SPRING PIN, .125 x .750
17	7028159	1	WORM SHAFT
18	1960294	2	NUT, 1/4-20 Hex Flange Lock
19	7014001	1	ROLL PIN, 1/8 x 3/4"
20	7021828	1	WORM
21	7011724	1	WASHER, .44 x .78 x .025 Curved
22	7028162	1	BRACKET, Worm
23	7091070	1	NUT, 5/16-18 Hex Flange Lock
24	7091138	1	SCREW, 5/16-18 x 5/8" Hex Head Cap, GR 5
25	7090539	1	SCREW, 1/4-20 x 1/2" Hex Washer Self-Tap

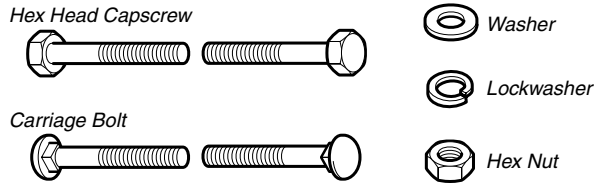
Footnotes

The above parts group applies to the following Mfg. Nos.:

1694836 - 7555M
1694837 - 7555EX
1694845 - 8560EI
1694846 - 8560EX

Hardware Identification & Torque Specifications

Common Hardware Types

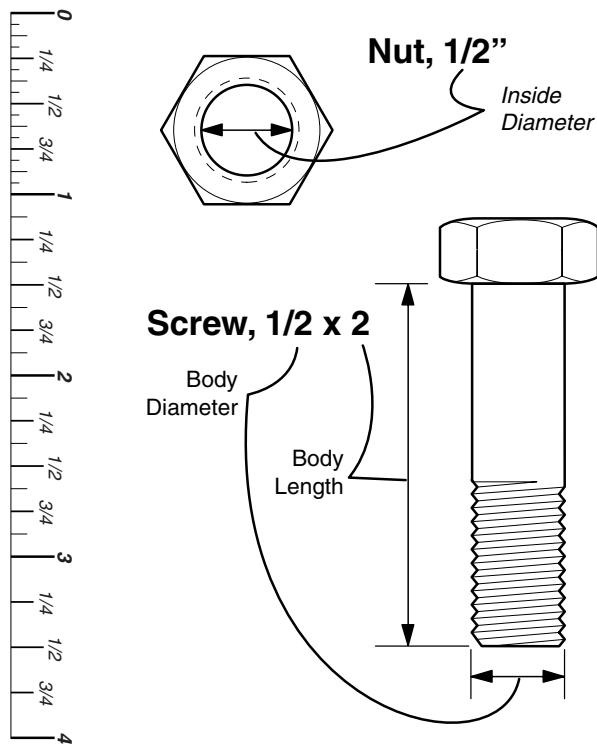


Standard Hardware Sizing

When a washer or nut is identified as 1/2", this is the *Nominal size*, meaning the *inside diameter* is 1/2 inch; if a second number is present it represents the *threads per inch*

When bolt or capscrew is identified as 1/2 - 16 x 2", this means the *Nominal size*, or *body diameter* is 1/2 inch; the second number represents the *threads per inch* (16 in this example, and the final number is the *body length* of the bolt or screw (in this example 2 inches long).

The guides and ruler furnished below are designed to help you select the appropriate hardware and tools.



Torque Specification Chart						
FOR STANDARD MACHINE HARDWARE (Tolerance ± 20%)						
Hardware Grade	No Marks SAE Grade 2		SAE Grade 5		SAE Grade 8	
	in/lbs ft/lbs	Nm.	in/lbs ft/lbs	Nm.	in/lbs ft/lbs	Nm.
8-32	19	2.1	30	3.4	41	4.6
8-36	20	2.3	31	3.5	43	4.9
10-24	27	3.1	43	4.9	60	6.8
10-32	31	3.5	49	5.5	68	7.7
1/4-20	66	7.6	8	10.9	12	16.3
1/4-28	76	8.6	10	13.6	14	19.0
5/16-18	11	15.0	17	23.1	25	34.0
5/16-24	12	16.3	19	25.8	27	34.0
3/8-16	20	27.2	30	40.8	45	61.2
3/8-24	23	31.3	35	47.6	50	68.0
7/16-14	30	40.8	50	68.0	70	95.2
7/16-20	35	47.6	55	74.8	80	108.8
1/2-13	50	68.0	75	102.0	110	149.6
1/2-20	55	74.8	90	122.4	120	163.2
9/16-12	65	88.4	110	149.6	150	204.0
9/16-18	75	102.0	120	163.2	170	231.2
5/8-11	90	122.4	150	204.0	220	299.2
5/8-18	100	136	180	244.8	240	326.4
3/4-10	160	217.6	260	353.6	386	525.0
3/4-16	180	244.8	300	408.0	420	571.2
7/8-9	140	190.4	400	544.0	600	816.0
7/8-14	155	210.8	440	598.4	660	897.6
1-8	220	299.2	580	788.8	900	1,244.0
1-12	240	326.4	640	870.4	1,000	1,360.0

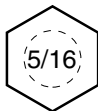
NOTES

- These torque values are to be used for all hardware excluding: locknuts, self-tapping screws, thread forming screws, sheet metal screws and socket head setscrews.
- Recommended seating torque values for locknuts:
 - for prevailing torque locknuts - use 65% of grade 5 torques.
 - for flange whizlock nuts and screws - use 135% of grade 5 torques.
- Unless otherwise noted on assembly drawings, all torque values must meet this specification.

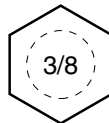
Wrench & Fastener Size Guide



1/4" Bolt or Nut
Wrench—7/16"



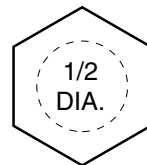
5/16" Bolt or Nut
Wrench—1/2"



3/8" Bolt or Nut
Wrench—9/16"



7/16" Bolt or Nut
Wrench (Bolt)—5/8"
Wrench (Nut)—11/16"



1/2" Bolt or Nut
Wrench—3/4"

Simplicity

MANUFACTURING, INC.
500 N. Spring Street / PO Box 997
Port Washington, WI 53074-0997 USA

www.simplicitymfg.com

© Copyright 2005 Simplicity Manufacturing, Inc.
All Rights Reserved. Printed In USA.

