

---

# ***Simplicity***®

---

**OWNER'S  
MANUAL**

42" SNOW PLOW AND DOZER BLADE

MFG. NO. 795

SIMPLICITY MANUFACTURING COMPANY, INC.



SER. FORM - OP38  
LITHO IN USA

1357 7

## PACKING

The 42" snow plow and dozer comes packed complete in one bundle.

## INSTALLATION

Attach the push bar assembly to the blade using a king pin and install a spring clip through the king pin. Place the pivot pin through the blade assembly bracket and push bar. Position the push bar under the tractor front axle and attach it to the axle using two pins and spring clips. Attach the spring end of the lift rod to the push bar assembly and the other end to the tractor lift arm using two spring clips.

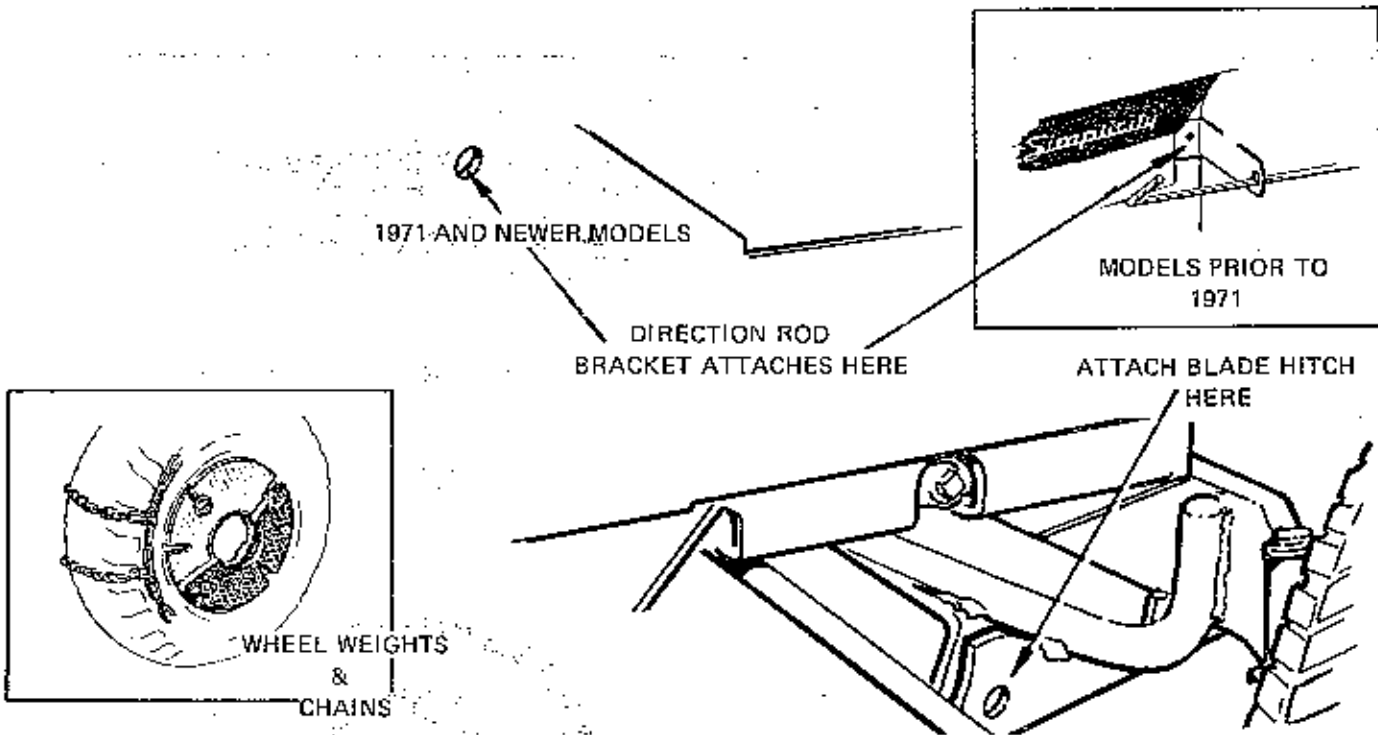
## OPERATION

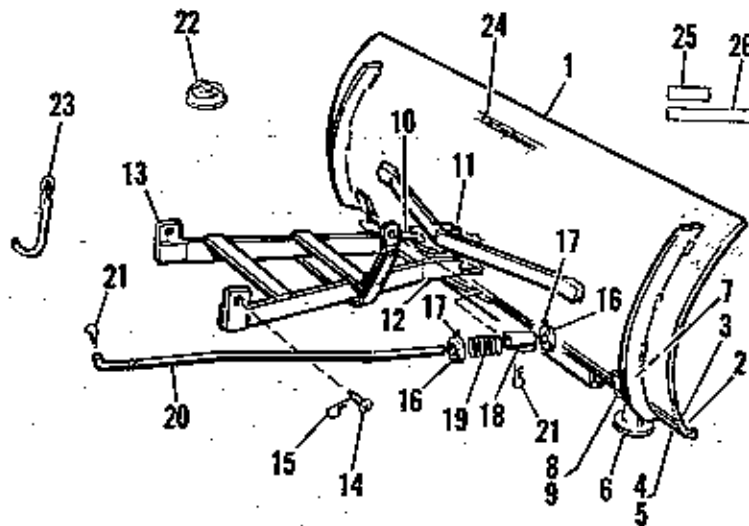
Alternate holes are provided to permit adjustment of the shoe assemblies for raising or lowering the blade when cleaning gravel drives or walks. When cleaning concrete it is desirable to allow the blade to scrape the surface.

The angle of the blade is adjustable to permit plowing to the left or right by moving pivot pin to the desired hole in the blade mounting bracket.

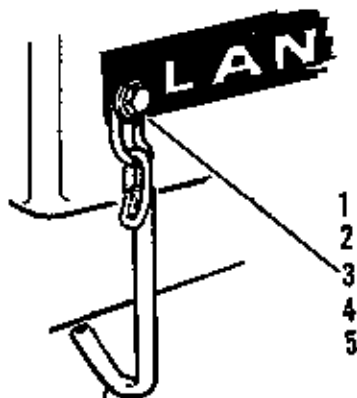
When using this equipment it is recommended that chains and wheel weights be installed on the tractor. Loose mounting of the chains will make them self-cleaning.

If it is desired to use a tiller or other attachment when the blade is mounted, the transport hook which is bolted to the frame at the front of the tractor should be used. With the blade hooked in the transport position, the lift arm can be removed from the tractor. The lift can then be used to raise or lower another attachment.





| Ref. No. | Part No. | Qty. Req. | Description                   |
|----------|----------|-----------|-------------------------------|
| 1        | 107047   | 1         | 42" Blade Assembly            |
| 2        | 107045   | 1         | Wear Plate                    |
| 3        | 702003   | 6         | Carriage Bolt, 3/8"-16 x 3/4" |
| 4        | 720002   | 6         | Lock Washer, 3/8"             |
| 5        | 717003   | 6         | Hex Nut, Full, 3/8"-16        |
| 6        | 107024   | 2         | Shoe Assembly                 |
| 7        | 702002   | 4         | Carriage Bolt, 3/8"-16 x 1"   |
| 8        | 720002   | 4         | Lock Washer, 3/8"             |
| 9        | 717003   | 4         | Hex Nut, Full, 3/8"-16        |
| 10       | 1603601  | 1         | Pivot Pin                     |
| 11       | 1603602  | 1         | King Pin                      |
| 12       | 8161045  | 1         | Spring Clip                   |
| 13       | 172150   | 1         | Push Bar Assembly             |
| 14       | 118053   | 2         | Pin                           |
| 15       | 106788   | 2         | Hairpin Clip                  |
| 16       | 8031007  | 2         | Collar                        |
| 17       | 713002   | 2         | Set Screw, 5/16"-18 x 3/8"    |
| 18       | 171679   | 1         | Rod Guide                     |
| 19       | 106064   | 1         | Spring                        |
| 20       | 171680   | 1         | Front Lift Rod                |
| 21       | 106788   | 2         | Hairpin Clip                  |
| 22       | 172432   | 1         | Fuel Tank Cap (Winterized)    |
| 23       | 172898   | 1         | Transport Chain Assembly      |
| 24       | 106719   | 1         | Film, Simplicity              |
| 25       | 103005   | 1         | Model No. Plate               |
| 26       | 107142   | 1         | Decal, Instructions           |



172898 Transport Chain  
From Previous Page

| Ref. No. | Part No. | Qty. Req. | Description                    |
|----------|----------|-----------|--------------------------------|
| 1        | 705009   | 1         | Hex Capscrew, 3/8"-16 x 1-1/2" |
| 2        | 154177   | 1         | Spacer                         |
| 3        | 719001   | 1         | Plain Washer, 3/8"             |
| 4        | 720002   | 1         | Lock Washer, 3/8"              |
| 5        | 717003   | 1         | Hex Nut, Full, 3/8"-16         |
| 6        | 174438   | 1         | Deflector                      |
| 7        | 705002   | 2         | Hex Capscrew, 1/4"-20 x 1/2"   |
| 8        | 720003   | 2         | Lock Washer, 1/4"              |
| 9        | 717005   | 2         | Hex Nut, 1/4"-20               |

Install the deflector as illustrated. If the unit is equipped with lights the deflector is mounted using the same hardware that secures the headlight.

