



Parts Manual



520

Single-Stage Snowthrowers

5HP Product

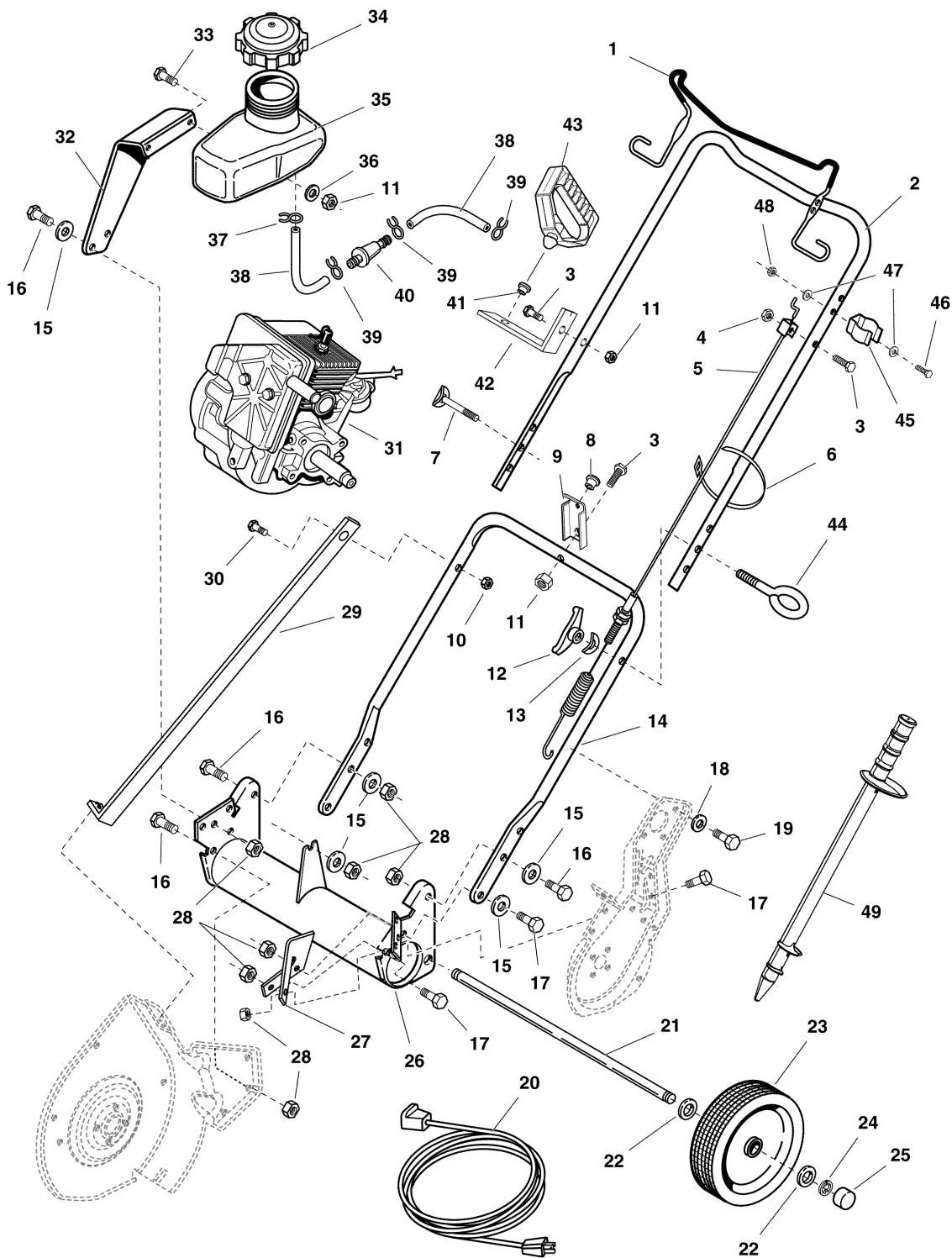
Mfg. No.	Description
1694585	520M, 5HP 20" (MS)
1694586	520E, 5HP 20" (ES)

PRODUCT COMPONENTS	PAGES
Frame, Handles & Engine Group	4
Auger & Drive Group	8
Auger Housing & Chute Group	12
Decals Group	16
Torque Specification Chart	Inside Back Cover

Frame, Handles & Engine Group

NOTE: Unless noted otherwise,
use the standard hardware torque
specification chart.

178fheg



The above parts group applies to the following Mfg. Nos.:

1694585 - 520M

1694586 - 520E

Frame, Handles & Engine Group

REF NO	PART NO.	QTY.	DESCRIPTION
1	1720525SM	1	HANDLE, Auger Control
2	1720641SM	1	HANDLE, Upper
3	1921961SM	3	CAPSCREW, Hex Hd., 1/4-20 x 1-1/4
4	1923358SM	1	NUT, Hex Centerlock, 1/4-20
5	1720323SM	1	CABLE, Auger Control
6	1701011SM	1	TIE, Self Locking
7	1931338SM	2	BOLT, Rd. Hd., 5/16-18 x 1-3/4
8	1716678SM	1	SNAP BUSHING, 3/8
9	1720574SM	1	BRACKET, Chute Rotator Rod
10	1933896SM	1	NUT, Hex Lk., #10-24
11	1920397SM	4	NUT, Hex Lk. Esna, 1/4-20
12	1716632SM	2	KNOB, Wing
13	1717312SM	2	WASHER, Curved, 5/16
14	1720573SM	1	HANDLE, Lower
15	1919326SM	6	WASHER, 3/4
16	1921332SM	6	CAPSCREW, Hex Hd., 5/16-18 x 3/4
17	1921333SM	2	CAPSCREW, Hex Hd., 5/16-18 x 1
18	1917356SM	4	LOCKWASHER, 5/16
19	1921332SM	4	CAPSCREW, Hex Hd., 5/16-18 x 3/4
20	*	1	CORD, Extension (Electric Start Models)
21	1716608SM	1	SHAFT, Axle
22	1924940SM	4	WASHER
23	7026240SM	2	TIRE, Semi-pneumatic
24	1716622SM	2	RING, Retainer, Ext., #37
25	1716664SM	2	CAP, Hub
26	1716613SM	1	FRAME ASSY.
27	1719541SM	1	BRACKET, Reinforcement
28	1919438SM	9	NUT, Hex Lk., Esna, 5/16-18
29	1720322SM	1	STRAP, Support
30	2860604SM	1	SCREW, Hex Wshr. Hd., #10-24 x 1-1/4
31	*	1	ENGINE, Manual Start, Model HSK850, Type 8319D
31	*	1	ENGINE, Electric Start, Model HSK850, Type 8325D
32	1716638SM	1	BRACKET, Fuel
33	1923341SM	2	CAPSCREW, Hex Hd., 1/4-20 x 3/4
34	1716646SM	1	CAP, Fuel
35	1716634SM	1	TANK, Fuel
36	1921319SM	2	WASHER
37	1679061SM	1	CLAMP, Hose
38	1716681SM	2	HOSE, Fuel, 5-1/2 long
39	2860112SM	3	CLAMP, Wire Form
40	2173206SM	1	FILTER, Gas
41	1716676SM	1	SNAP BUSHING, 1/4
42	1720640SM	1	BRACKET, Starter Handle
43	7041954SM	1	HANDLE, Start (Mitten)

Footnotes

Note* See your local Tecumseh distributor for service parts.

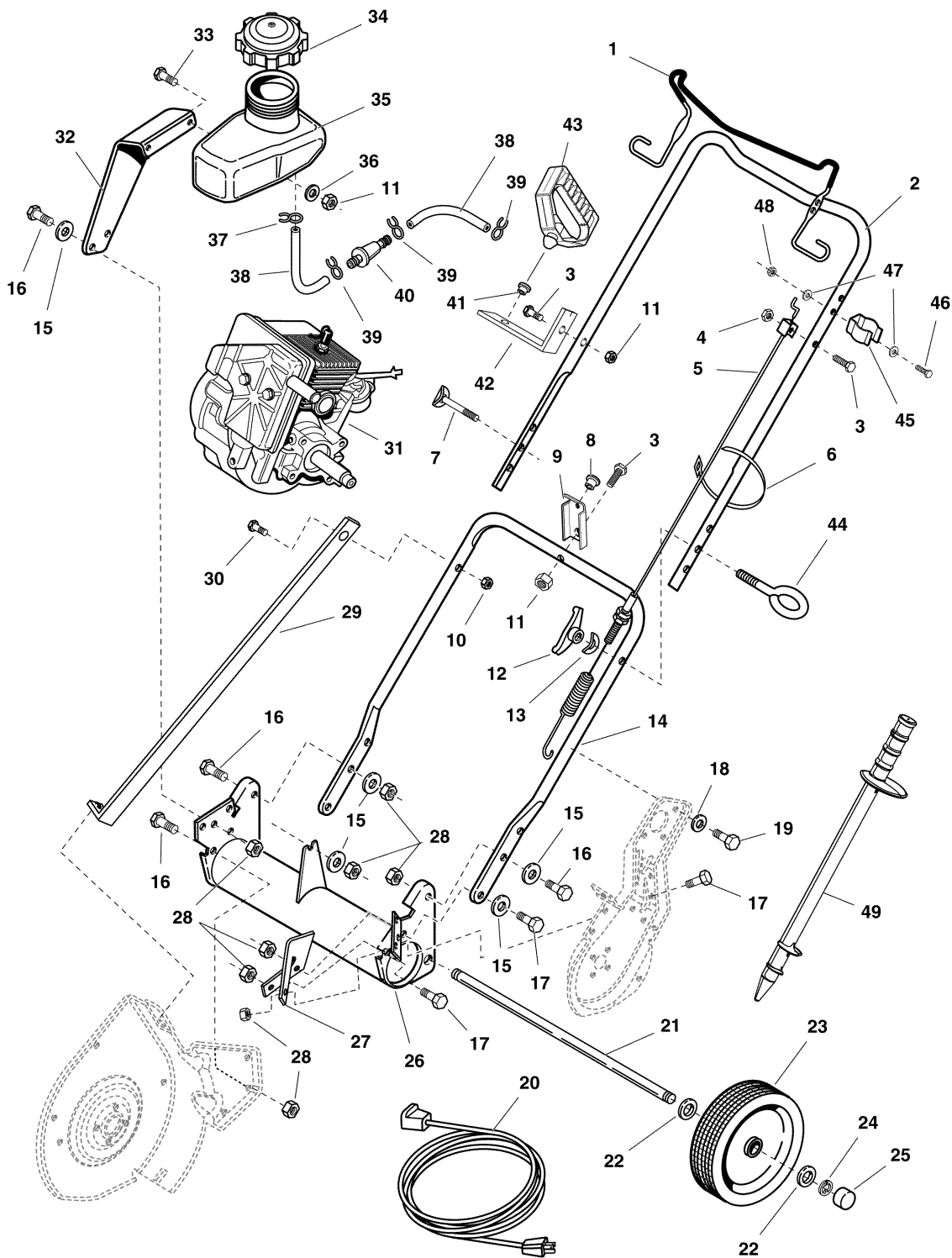
The above parts group applies to the following Mfg. Nos.:

1694585 - 520M
1694586 - 520E

Frame, Handles & Engine Group

NOTE: Unless noted otherwise,
use the standard hardware torque
specification chart.

178fheg



The above parts group applies to the following Mfg. Nos.:

1694585 - 520M

1694586 - 520E

Frame, Handles & Engine Group

REF NO	PART NO.	QTY.	DESCRIPTION
44	7075342SM	1	HOLDER, Clean-Out Tool, Lower
45	1726728SM	1	HOLDER, Clean-Out Tool, Upper
46	7091757SM	1	SCREW, #10-24 x 1-1/4, Hex Head Cap
47	7090011SM	2	WASHER, #10 Internal Tooth Lock
48	7091267SM	1	NUT, #10-24 Hex Center Lock
49	7075909SM	1	TOOL, Clean-Out

Footnotes

Note* See your local Tecumseh distributor for service parts.

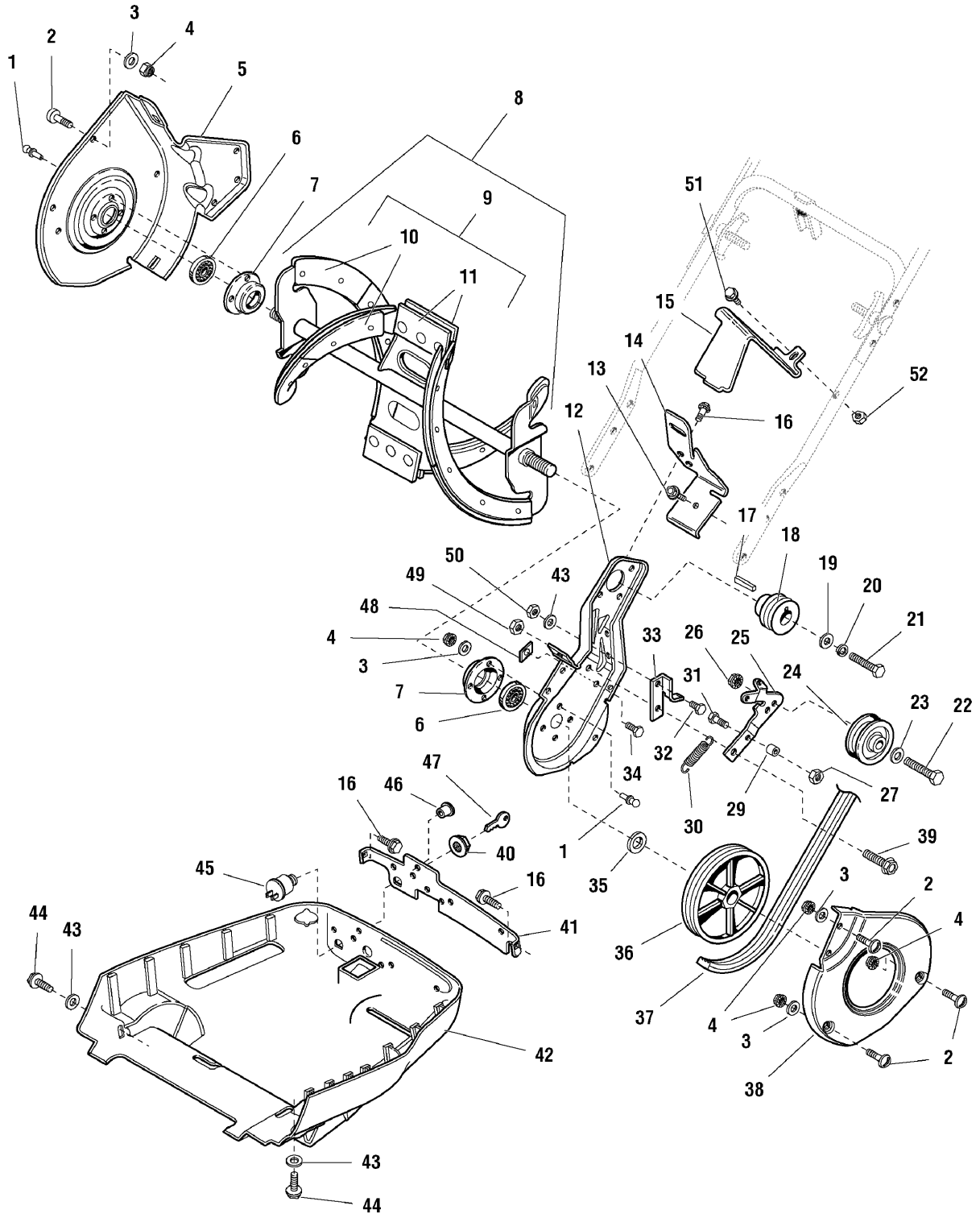
The above parts group applies to the following Mfg. Nos.:

1694585 - 520M
1694586 - 520E

Auger & Drive Group

178adg

NOTE: Unless noted otherwise,
use the standard hardware torque
specification chart.



The above parts group applies to the following Mfg. Nos.:

1694585 - 520M

1694586 - 520E

Auger & Drive Group

REF NO	PART NO.	QTY.	DESCRIPTION
1	1960241SM	8	RIVET, Pop, 1/4 x 1/2
2	1960570SM	8	SCREW, Truss Head, Torx, #10-24
3	1910531SM	8	WASHER, Rivet
4	1933896SM	8	NUT, Hex Lock. ESNA, #10-24
5	1716595SM	1	FRAME, Right Side
6	1665521SM	2	BEARING, Auger
7	1716649SM	2	RETAINER, Bearing
8	1719612SM	1	AUGER ASSEMBLY, Complete (Includes Ref. Nos. 9-11)
9	1686705SM	1	KIT, Flighting Replacement (Includes Ref. Nos. 10 & 11, plus mounting hardware)
10	1718207SM	8	FLIGHT, Rubber
11	1716661SM	4	CENTER FLIGHT, Rubber
12	1716590SM	1	FRAME, Left Side
13	1960001SM	1	SCREW, Plastite, #10-14 x 5/8
14	1716619SM	1	SHIELD, Belt
15	1716663SM	1	AIR DEFLECTOR
16	1929477SM	1	SCREW, Hex Head, #10-24 x 1-1/4
17	2805850SM	1	KEY, Parallel
18	1716616SM	1	PULLEY, Drive
19	1960141SM	1	WASHER
20	1917356SM	1	LOCKWASHER, 5/16
21	1921982SM	1	CAPSCREW, Hex Head, 5/16-24 x 1-1/4
22	1921969SM	1	CAPSCREW, Hex Head, 3/8-16 x 1-1/2
23	1924940SM	1	WASHER
24	1716615SM	1	PULLEY, Idler
25	1716618SM	1	IDLER ARM
26	1931211SM	1	NUT, Flange Whiz Lock, 3/8-16
27	1923358SM	1	NUT, Hex Centerlock, 1/4-20
29	1716656SM	1	ROLLER, Belt Stop
30	1716653SM	1	SPRING, Idler Return
31	1921960SM	1	CAPSCREW, Hex Head, 1/4-20 x 1
32	1924009SM	1	CAPSCREW, Hex Head, 1/4-20 x 7/8
33	1716617SM	1	BRACKET, Belt
34	1927429SM	1	CAPSCREW, Hex Washer Head Taptite, 1/4-20 x 5/8
35	1716655SM	1	SPACER, Pulley
36	1716614SM	1	PULLEY, Driven
37	1716645SM	1	BELT, Drive
38	1716589SM	1	GUARD, Belt
39	1716654SM	1	IDLER PIVOT BOLT
40	1714055SM	1	FLANGE NUT, Ignition Switch, 5/8-32
41	1716637SM	1	CONTROL PANEL
42	1716627SM	1	LOWER HOUSING
43	1921319SM	3	WASHER
44	1960568SM	2	SCREW, Hex Head, Taptite, 1/4-20 x 7/8

Footnotes

The above parts group applies to the following Mfg. Nos.:

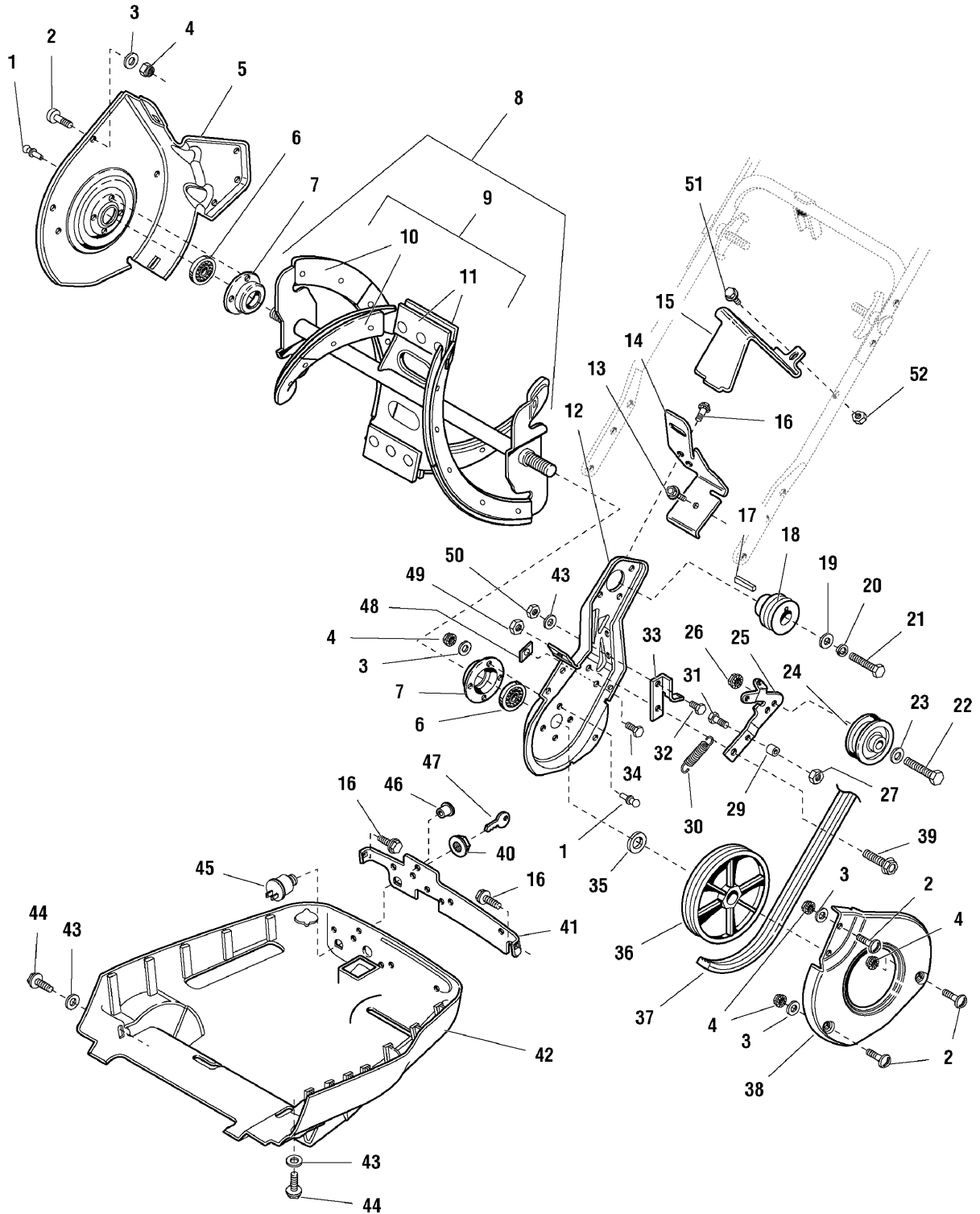
1694585 - 520M

1694586 - 520E

Auger & Drive Group

178adg

NOTE: Unless noted otherwise,
use the standard hardware torque
specification chart.



The above parts group applies to the following Mfg. Nos.:

1694585 - 520M

1694586 - 520E

Auger & Drive Group

REF NO	PART NO.	QTY.	DESCRIPTION
45	1718337SM	1	SWITCH, Ignition
46	1716676SM	1	SNAP BUSHING, 1/4
47	1714054SM	2	KEY, Ignition
48	1960595SM	1	SPEED NUT, 1/4-20
49	1919438SM	1	NUT, Hex Lock, ESNA, 5/16-18
50	1920397SM	1	NUT, Hex Lock, ESNA, 1/4-20
51	2860604SM	4	SCREW, Hex Head, Taptite, #10-24 x 1/2
52	1933896SM	1	NUT, Hex Lock, #10-24

Footnotes

The above parts group applies to the following Mfg. Nos.:

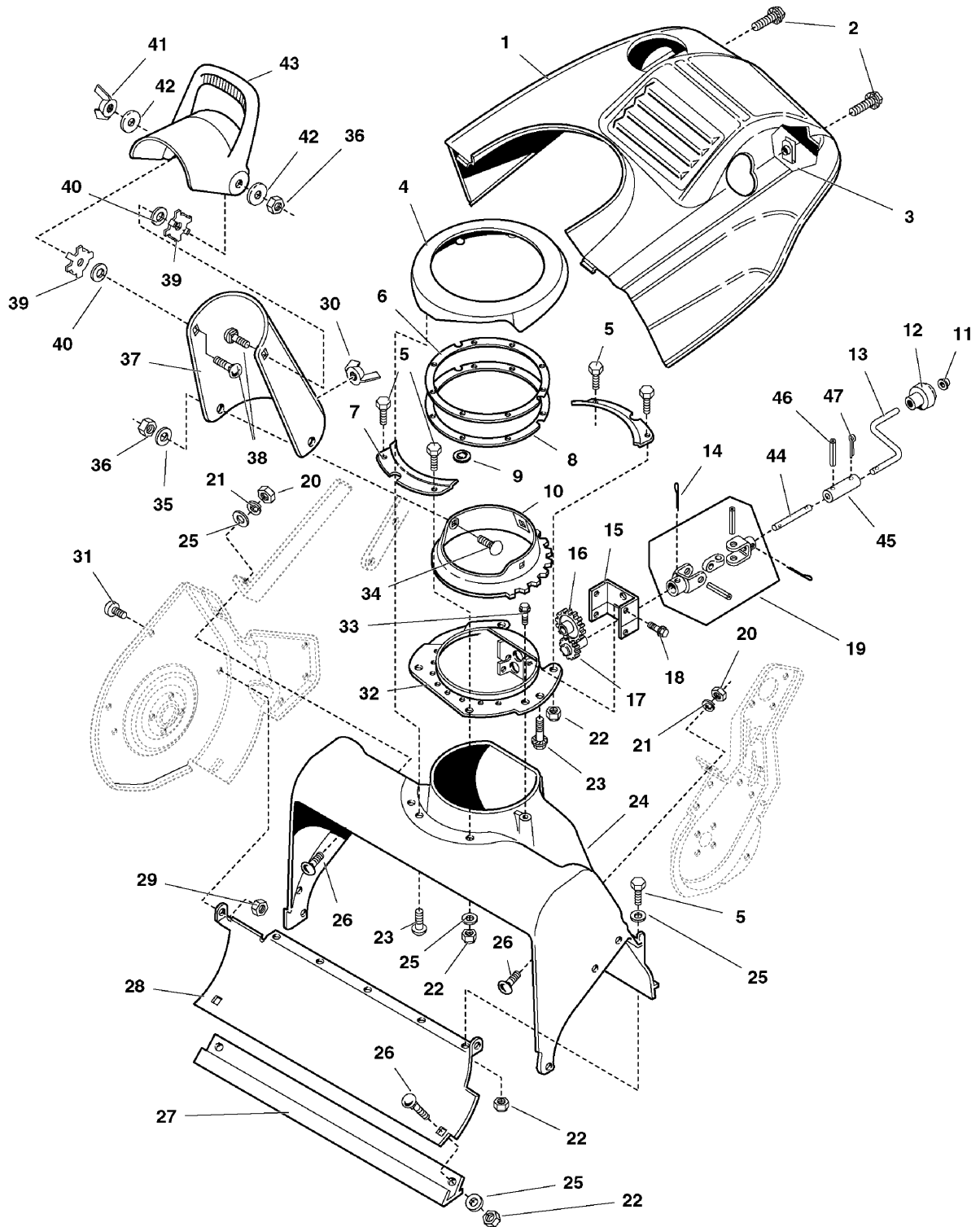
1694585 - 520M

1694586 - 520E

Auger Housing & Chute Group

NOTE: Unless noted otherwise,
use the standard hardware torque
specification chart.

178ahcg



The above parts group applies to the following Mfg. Nos.:

1694585 - 520M

1694586 - 520E

Auger Housing & Chute Group

REF NO	PART NO.	QTY.	DESCRIPTION
1	7058501SM	1	HOUSING, Upper Plastic w/Louvers 520 Snow
2	1928732SM	2	SCREW, Hex Head, Taptite, #10-24 x 1
3	1960593SM	2	NUT, Retainer, Speed, #10-24 w/Extrusion
4	1716628SM	1	COLLAR
5	1923341SM	9	CAPSCREW, Hex Head, 1/4-20 x 3/4
6	1716640SM	1	GASKET
7	1716625SM	2	RETAINER
8	1716641SM	1	RETAINER, Gasket
9	1960521SM	8	NUT, Push
10	1716611SM	1	BASE, Chute
11	1960093SM	1	NUT, Push, Pal, 3/8
12	1714084SM	1	KNOB, Chute, Rotate
13	1720578SM	1	HANDLE, Chute Rotator Upper
14	1923500SM	2	PIN, Cotter, 1/8 x 1-1/2
15	1716630SM	1	BRACKET, Gear
16	1716636SM	1	GEAR, Idler
17	1716635SM	1	DRIVE GEAR
18	1927429SM	4	SCREW, Hex Head Taptite, 1/4-20 x 5/8
19	1716658SM	1	UNIVERSAL JOINT ASSEMBLY
20	1916622SM	2	NUT, Hex 1/4-20
21	1916964SM	2	LOCKWASHER, Spring, 1/4
22	1920397SM	11	NUT, Hex Lock, ESNA, 1/4-20
23	1960001SM	3	SCREW, Plastite #10-14 x 5/8
24	1716609SM	1	HOUSING, Auger
25	1921319SM	9	WASHER
26	1931318SM	4	CARRIAGE BOLT, 1/4-20 x 7/8
27	1716606SM	1	SCRAPERBAR
28	1716596SM	1	SCOOP
29	1933896SM	1	NUT, Hex Lock, #10-24
30	1933126SM	2	NUT, Wing 5/16-18 Lock
31	1960570SM	1	SCREW, Truss Head Torx, #10-24 x 5/8
32	1716610SM	1	PLATE, Chute Base
33	1960001SM	2	SCREW, Plastite, #12-14 x 1.0
34	1960282SM	3	CARRIAGE BOLT, 5/16-18 x 3/4
35	1919326SM	3	WASHER, 5/16
36	1919438SM	4	NUT, Hex Lock, ESNA 5/16-18
37	1716612SM	1	CHUTE
38	1931335SM	2	CARRIAGE BOLT, 5/16-18 x 1
39	1716642SM	2	WASHER, Octagon
40	1716624SM	2	WASHER, Rubber
41	1716632SM	1	KNOB, Wing
42	1920283SM	2	WASHER, 1-1/2 OD
43	1716631SM	1	DEFLECTOR, Chute
44	1720576SM	1	HANDLE, Chute Rotator Lower, E-Coat

Footnotes

The above parts group applies to the following Mfg. Nos.:

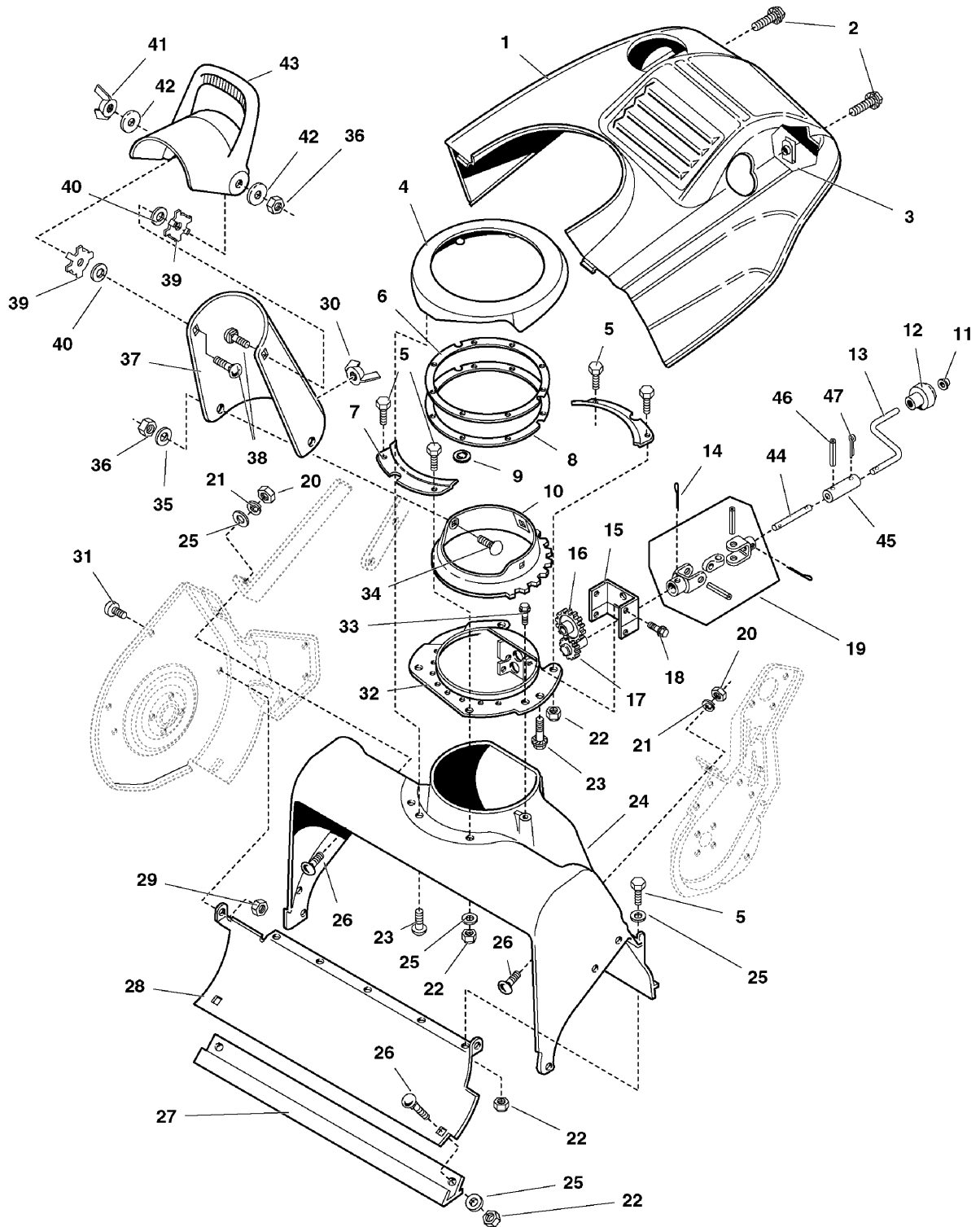
1694585 - 520M

1694586 - 520E

Auger Housing & Chute Group

NOTE: Unless noted otherwise,
use the standard hardware torque
specification chart.

178ahcg



The above parts group applies to the following Mfg. Nos.:

1694585 - 520M

1694586 - 520E

Auger Housing & Chute Group

REF NO	PART NO.	QTY.	DESCRIPTION
45	1720577SM	1	TUBE, Chute Handles 1/2 OD 7.00 Long E-Coat
46	1926228SM	1	PIN, Spring 5/32 X 1 SAE 1095
47	1960074SM	1	CLIP, Hair Pin .093 DIA Spring Wire 1.625LG

Footnotes

The above parts group applies to the following Mfg. Nos.:

1694585 - 520M

1694586 - 520E

Decals Group

REF NO	PART NO.	QTY.	DESCRIPTION
1	1716532SM	1	DECAL, Danger, Auger
2	1716665SM	1	DECAL, Logo, R.H.
3	1717960	1	DECAL, Power-Mass (Export Models Only)
4	1722674SM	1	DECAL, Danger, Discharge Chute
5	1709933SM	1	DECAL, C.E. (Export Models Only)
6	1716669SM	1	DECAL, Console (Electric Start Models)
6	1716670SM	1	DECAL, Console (Manual Start Models)
7	*	1	DECAL, OPEI
8	1716672SM	1	DECAL, Auger Control
9	1716671SM	1	DECAL, Warning
10	*	1	DECAL, Compliance
11	*	1	SERIAL No.
12	1716666SM	1	DECAL, Logo, L.H.

Footnotes

Note* Not a Service Part.

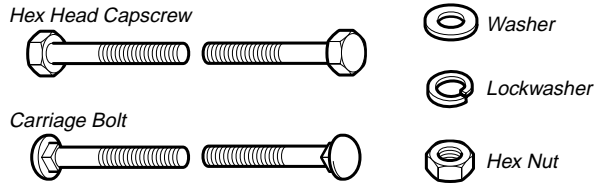
The above parts group applies to the following Mfg. Nos.:

1694585 - 520M

1694586 - 520E

Hardware Identification & Torque Specifications

Common Hardware Types

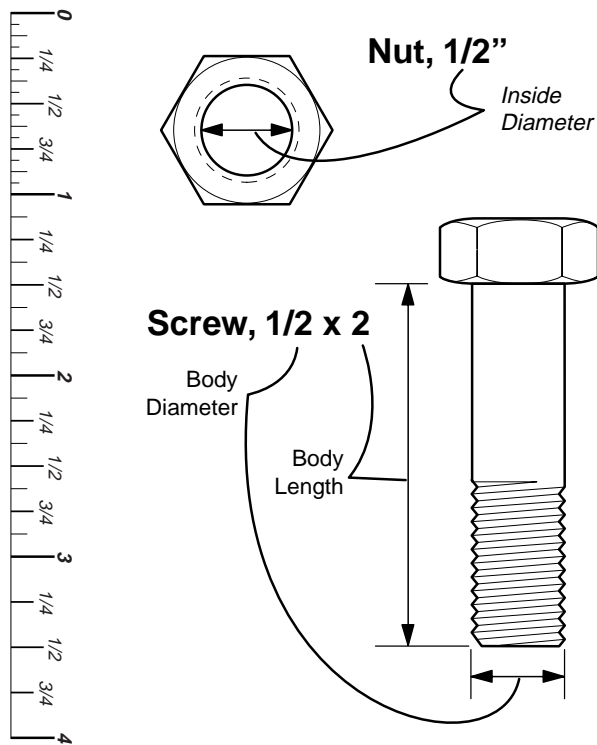


Standard Hardware Sizing

When a washer or nut is identified as 1/2", this is the *Nominal size*, meaning the *inside diameter* is 1/2 inch; if a second number is present it represents the *threads per inch*

When bolt or capscrew is identified as 1/2 - 16 x 2", this means the *Nominal size*, or *body diameter* is 1/2 inch; the second number represents the *threads per inch* (16 in this example, and the final number is the *body length* of the bolt or screw (in this example 2 inches long).

The guides and ruler furnished below are designed to help you select the appropriate hardware and tools.



Torque Specification Chart						
FOR STANDARD MACHINE HARDWARE (Tolerance ± 20%)						
Hardware Grade	No Marks SAE Grade 2		SAE Grade 5		SAE Grade 8	
	in/lbs ft/lbs	Nm.	in/lbs ft/lbs	Nm.	in/lbs ft/lbs	Nm.
8-32	19	2.1	30	3.4	41	4.6
8-36	20	2.3	31	3.5	43	4.9
10-24	27	3.1	43	4.9	60	6.8
10-32	31	3.5	49	5.5	68	7.7
1/4-20	66	7.6	8	10.9	12	16.3
1/4-28	76	8.6	10	13.6	14	19.0
5/16-18	11	15.0	17	23.1	25	34.0
5/16-24	12	16.3	19	25.8	27	34.0
3/8-16	20	27.2	30	40.8	45	61.2
3/8-24	23	31.3	35	47.6	50	68.0
7/16-14	30	40.8	50	68.0	70	95.2
7/16-20	35	47.6	55	74.8	80	108.8
1/2-13	50	68.0	75	102.0	110	149.6
1/2-20	55	74.8	90	122.4	120	163.2
9/16-12	65	88.4	110	149.6	150	204.0
9/16-18	75	102.0	120	163.2	170	231.2
5/8-11	90	122.4	150	204.0	220	299.2
5/8-18	100	136	180	244.8	240	326.4
3/4-10	160	217.6	260	353.6	386	525.0
3/4-16	180	244.8	300	408.0	420	571.2
7/8-9	140	190.4	400	544.0	600	816.0
7/8-14	155	210.8	440	598.4	660	897.6
1-8	220	299.2	580	788.8	900	1,244.0
1-12	240	326.4	640	870.4	1,000	1,360.0

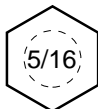
NOTES

- These torque values are to be used for all hardware excluding: locknuts, self-tapping screws, thread forming screws, sheet metal screws and socket head setscrews.
- Recommended seating torque values for locknuts:
 - for prevailing torque locknuts - use 65% of grade 5 torques.
 - for flange whizlock nuts and screws - use 135% of grade 5 torques.
- Unless otherwise noted on assembly drawings, all torque values must meet this specification.

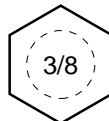
Wrench & Fastener Size Guide



1/4" Bolt or Nut
Wrench—7/16"



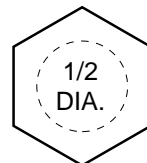
5/16" Bolt or Nut
Wrench—1/2"



3/8" Bolt or Nut
Wrench—9/16"



7/16" Bolt or Nut
Wrench (Bolt)—5/8"
Wrench (Nut)—11/16"



1/2" Bolt or Nut
Wrench—3/4"

Simplicity

MANUFACTURING, INC.
500 N. Spring Street / PO Box 997
Port Washington, WI 53074-0997 USA

www.simplicitymfg.com

Briggs and Stratton Yard Power Products Group
Copyright © 2007 by Briggs and Stratton Corporation
Milwaukee, WI, USA. All rights reserved

