



Quick Setup Guide

Two-Stage Snowthrower
1694986 10530L, 10.5 Snowthrower

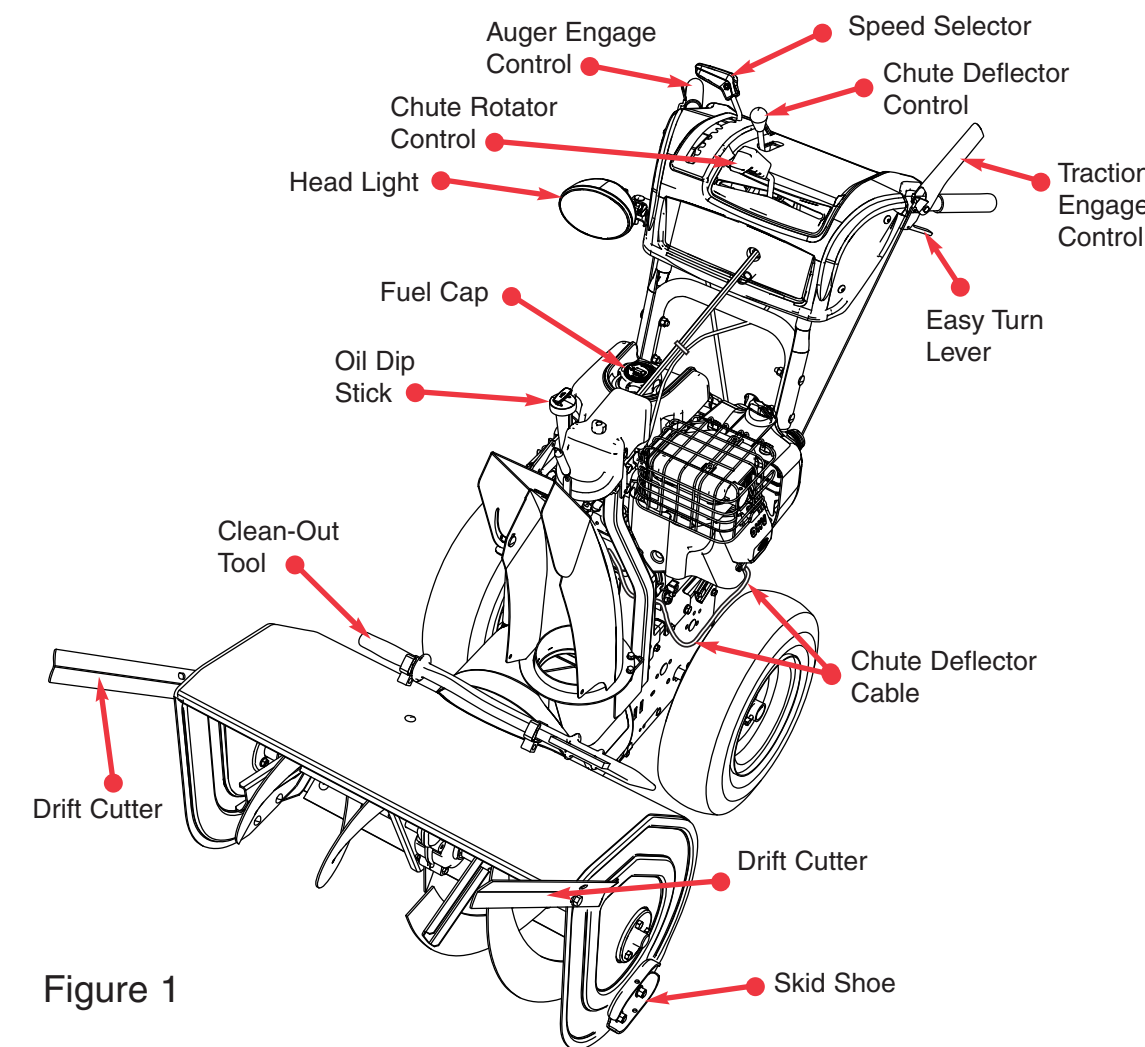


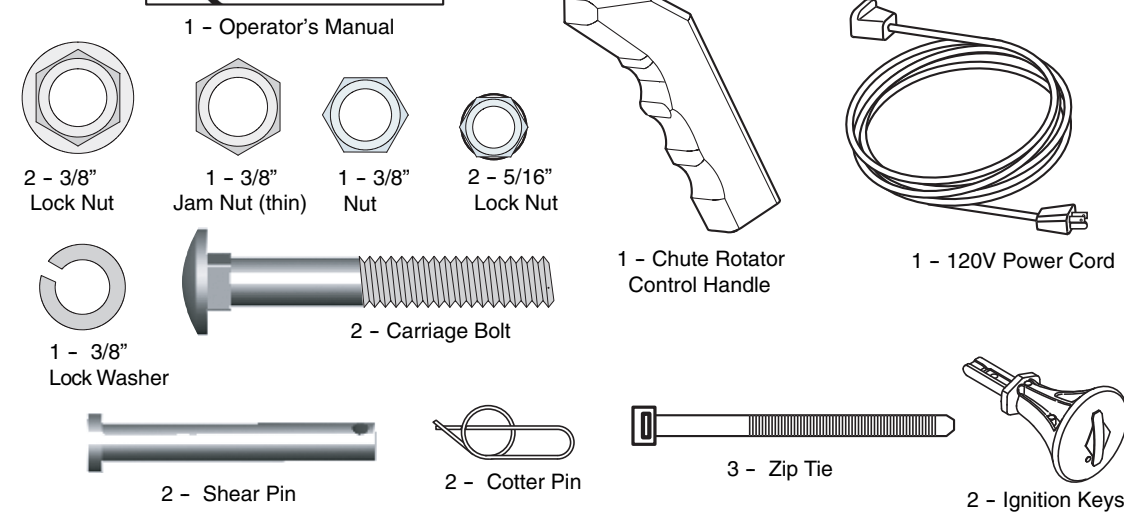
Figure 1

For Assembly You Will Need:

- Utility knife • Tin Snips or Banding Cutter
- Unleaded fuel • Pliers • Tire Pressure Gauge
- 1/2" Combination Wrench or 1/2" Deep Socket & Ratchet
- 3/8" Combination Wrench or 3/8" Socket & Ratchet
- 9/16" Combination Wrench or 9/16" Socket & Ratchet
- 7/16" Combination Wrench

Items Included:

- Operator's Manual
- Chute Rotator Control Handle
- One (1) Jam Nut (thin), 3/8", use 9/16" wrench
- One (1) Nut, 3/8", use 9/16" wrench
- One (1) Lock Washer, 3/8"
- Two (2) Carriage Bolts, 5/16" x 2-1/4, use 1/2" wrench
- Two (2) Lock Nuts, 5/16, use, use 1/2" wrench
- Two (2) Lock Nuts, 3/8, use, use 9/16" wrench
- 120V Power Cord ■ Three (3) Zip Ties
- Two (2) Keys ■ Two (2) Extra Shear pins
- Two (2) Extra Cotter pins



1 Remove the Packaging Materials

- Remove the straps or banding and cardboard from the crate. Remove the parts bag (A, Figure 2) from inside the chute (B). Locate and remove the manual packet (C).

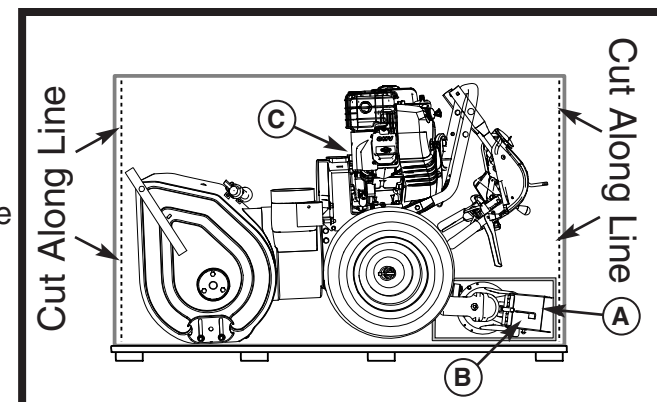


Figure 2

2 Read the Operator's Manual

- Locate the operator's manual in the manual packet. Always read and follow the instructions in the operator's manual. Proper care, performance tips, and safety information are located in this important document.

- "Right" and "Left" are from the Operating Position.

3 Raise The Handles

- Cut four orange zip ties (E, Figure 3) that secure control cables to handle assembly (C). Be careful not to cut or damage the control cables.
- Loosen nuts (B) in upper holes with a 1/2" wrench. Rotate upper handle assembly (A) up. Locate two carriage bolts and two 5/16 nuts in parts bag (B, Figure 1). Slide carriage bolts (D) and nuts (B) into lower holes. Tighten all hardware with a 1/2" wrench or deep socket.

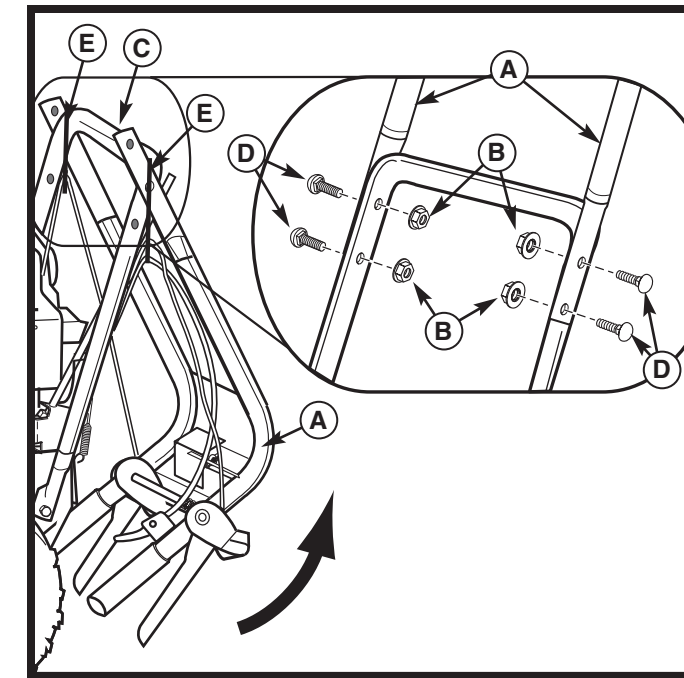


Figure 3

4 Install Chute Rotator Control Handle

- Install thin jam nut (B, Figure 4) onto chute rotator rod (C). Install chute rotator control handle (A) onto chute rotator rod (C) turning at least 10 full rotations.
- Align chute rotator control handle so it is facing forward and use a 9/16" wrench to tighten jam nut (B) against chute rotator control handle (A).
- Slide chute rotator control handle to the right hand side.

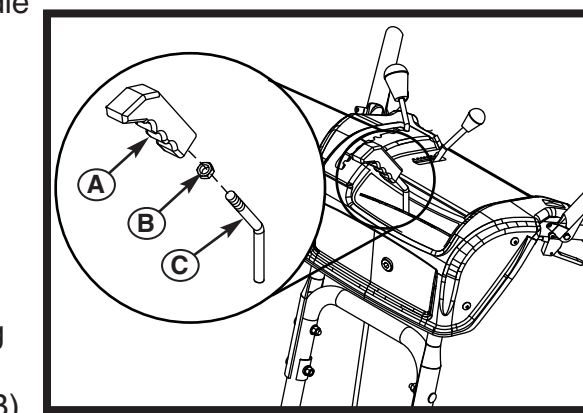


Figure 4

5 Install Drift Cutters

- Drift cutters (A, Figure 5) are mounted to snowthrower auger housing (C). With a 1/2 wrench remove the hardware (B). Install drift cutters (A) placing tab (D) into square hole (E) and the removed hardware (B).

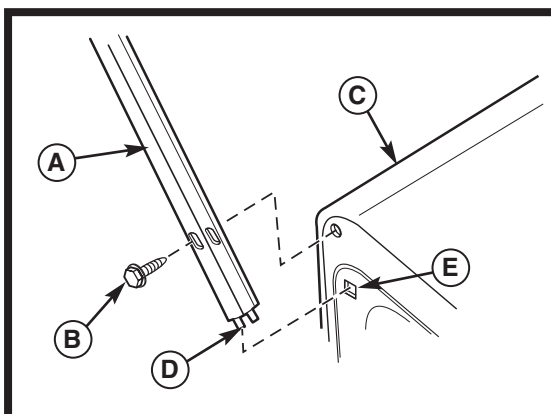


Figure 5

6 Connecting Shift Rod

- Connect shift rod (A, Figure 6) to shift lever (B) secure with lock washer (C) and nut (D) with a 1/2" wrench and a 7/16" wrench to prevent stud (E) from turning.

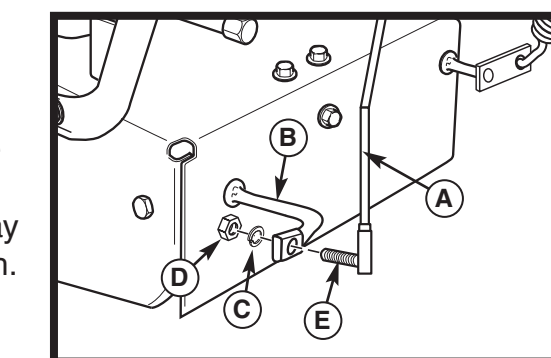


Figure 6

7 Chute and Rotator Assembly

- Bring chute from pallet to the left side of snowthrower.
- Remove special nut (A, Figure 7) and cover (B).
- Remove hair pin (C) with a pliers and slide rod (D) forward about 8 inches.
- Slide the chute base (A, Figure 8) onto the auger housing (B).
- Slide chute support tube (E, Figure 8) on to the carriage bolts (D). Do Not tighten at this time.
- Move chute rotator control handle (A, Figure 9) to the right hand side of the machine.
- Slide spout rotator rod (B, Figure 9) into hex dash opening (D). It may be necessary to move chute rotator handle (B) for rod to go into dash.
- Insert hair pin (C, Figure 9) into spout rotator rod (D).
- Install cover (B, Figure 7) and secure with special nut (A).
- Secure chute support tube (E, Figure 8) to chute base securing with lock nuts (C) using a 9/16 wrench.

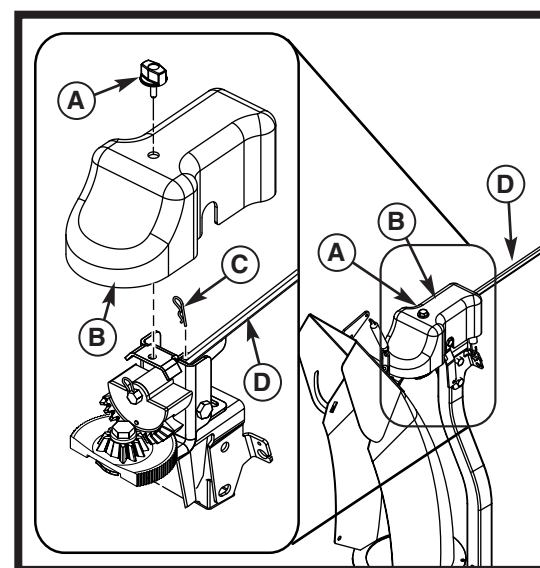


Figure 7

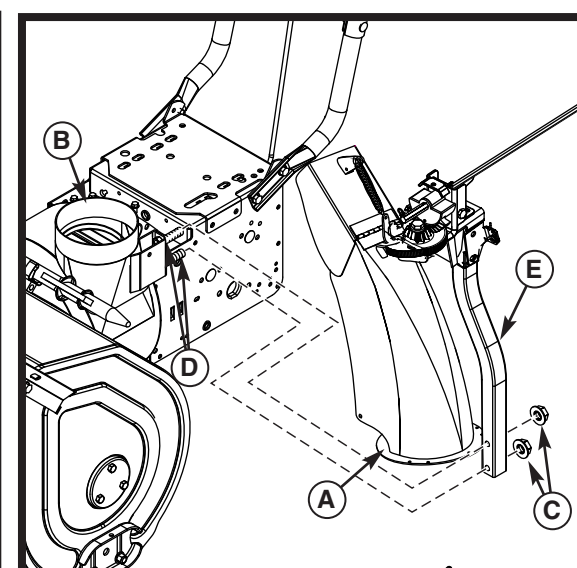


Figure 8

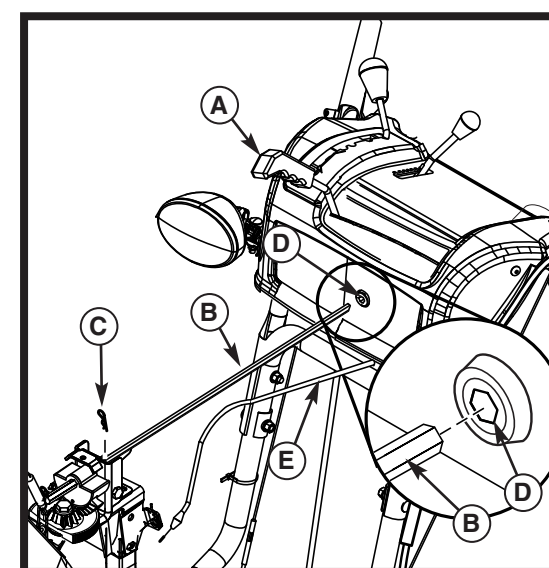


Figure 9

⚠ DANGER

Amputation hazard
Contact with moving parts inside chute will cause serious injury.
• Shut off engine before unclogging discharge chute.
• Use clean-out tool, not hands!

Carbon monoxide hazard
This engine emits poisonous carbon monoxide gas.
• Avoid inhaling exhaust fumes.
• Only operate outdoors.

Fire hazard
Gasoline is flammable.
• Allow engine to cool for at least 2 minutes before refueling.

⚠ WARNING

Avoid serious injury or death

• Read the operator's manual for operating and safety instructions.
• Do not defeat the safety features of the controls. They are for your protection.
• Keep machine properly maintained and serviced with all shields, guards and protective devices in place.
• Never allow children to operate snowthrower.
• Keep area of operation clear of all persons, especially children.
• Stop engine and disconnect spark plug wire before servicing the unit.
• Always direct discharge chute so as to avoid injury to persons or damage to property.

8 Spout Rotator Brake Cable Connection

- Slide the spout rotator brake cable (E, Figure 9) between the dash and the handle cross bar as shown.
- Slide the rubber dust cover (D, Figure 10) off of plastic fitting (B).
- Place "Z" bend of cable (C) into hole (G) of brake lever assembly (E)
- Pull plastic fitting (B) behind bracket (E).
- Slide chute rotator cable (A) between slot in bracket (E) and push forward to lock in place.
- Slide the rubber dust cover (F) over the plastic fitting (B).

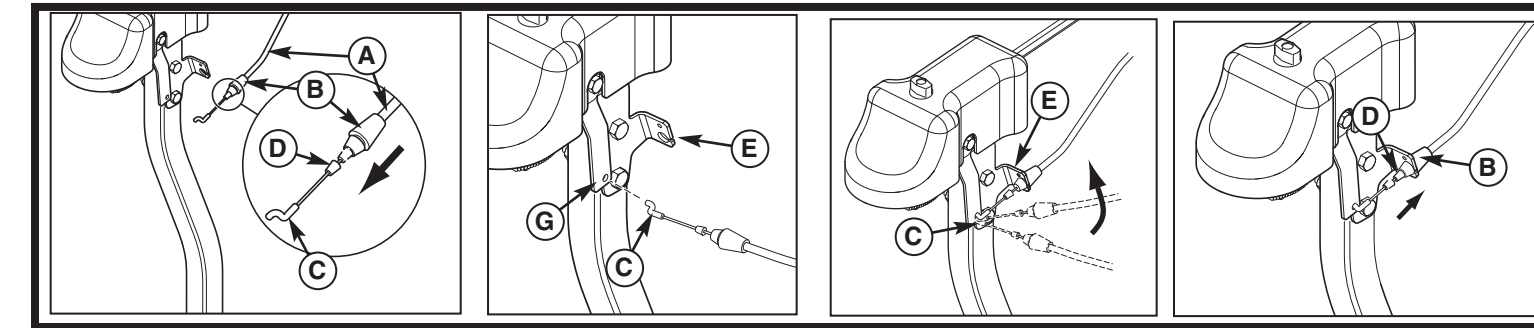


Figure 10

9 Remove Snowthrower From Crate

- Cut the two zip ties from between wheels and the wood pallet.
- Remove screws (A, Figure 11) from both skid shoes (B).
- Roll snowthrower off crate.

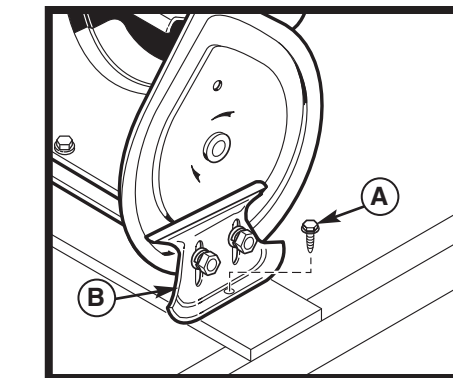


Figure 11

10 Add Oil and Fuel

Note: Engine is NOT shipped with oil. Add 5W-30 premium engine oil. See Engine Manual for complete engine oil specifications and maintenance.

- Clean the area around the oil fill tube (A, Figure 12). Remove the dip stick (B) from the oil fill tube and wipe the dip stick with a clean rag.
- Insert the dip stick (B) into the oil fill tube (thread in or push down completely).
- Remove and check the engine oil level (C). Oil level should be between FULL and ADD MARKS. If necessary, add oil to the oil fill tube.
- Replace and fully secure the dip stick (B).
- Remove the fuel cap (D, Figure 12).
- Add clean, fresh, UNLEADED fuel with a minimum of 87 octane, leaving one inch of space from the top of the tank for fuel expansion.
- Reinstall the fuel cap (D).

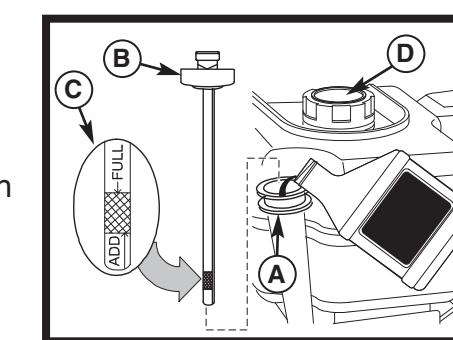


Figure 12

11 Final Checks

- Reduce the tire pressures to the pressures shown below. Tires are over-inflated for shipping purposes and must be set to the correct pressures for optimum performance. **Tire Pressure: 14 PSI**
- Check control lever cables (A, Figure 13). Check the "Z" bend ends (C) of the control cables (A) are secured in the holes on the control levers (B) as shown. Check that the cables (A) are not kinked and have freedom of movement. Check that the auger cable, right side, (A, Figure 13) is on top of cable button (D) as show.
- Loosely secure the spout rotator brake cable to the spout rotator rod with a zip tie.
- To prevent the chute deflector cable from contacting the tire, rotate the chute all the way to the left and secure cable to the left handle with zip tie (see Figure 1).
- Adjust light and secure the light wire to the handle with a zip tie.

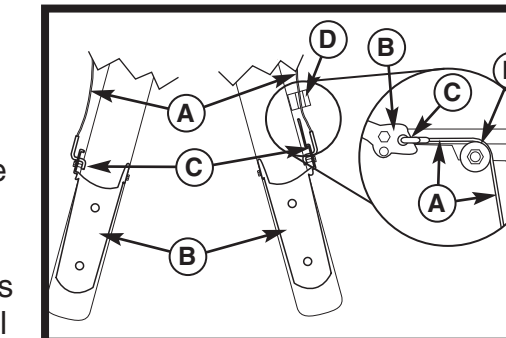


Figure 13

12 Starting the Engine

- Turn the fuel valve (B, Figure 14) to the ON position.
 - Insert the engine key (F) into the engine key slot and push in fully.
 - Move the throttle lever (E) all the way to the right, to the FAST position.
 - Turn the choke knob (G) fully counter clockwise if engine is cold. (Do not choke a warm engine.)
 - Push the primer button (D) two times if engine is cold. (Do not prime a warm engine.)
 - Engine Mounted Electric Start: See Operator's Manual.
 - Manual Start: Pull starter handle (C) rapidly to start the engine. Do not allow the starter handle to snap back—let the starter rope rewind slowly—while keeping a firm grip on the starter handle.
 - As the engine starts and begins to operate evenly, turn the choke knob (G) slowly clockwise to the RUN position, and set the Throttle Lever to SLOW. If the engine falters, turn the choke knob counter-clockwise until the engine runs smoothly, and let it run briefly before returning the choke to the RUN position.
- NOTE: Allow the engine to warm up at SLOW throttle for a few minutes before operating the snowthrower at full speed. The engine will not develop full power until it reaches operating temperature. After warming up, always operate at full throttle.*

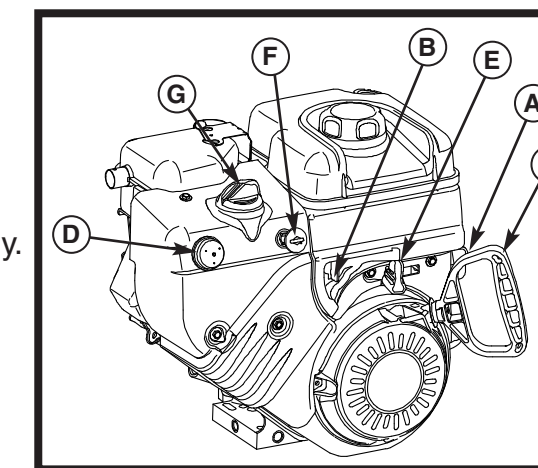


Figure 14

13 Check that Clean-Out Tool is attached to Snowthrower

- Always use a clean-out tool to clear clogged discharge chute. Never use your hands.

14 Snowthrower and Adjustments

- Read Operator's Manual.