



Signature Professional Series Snowthrowers

10.5HP Snowthrowers

Mfg. No. Description

- 1695074 P10524E, 10.5HP Snowthrower
1695075 P10524E, 10.5HP Snowthrower (CE/Export)

11.5HP Snowthrowers

Mfg. No. Description

- 1695076 P11528E, 11.5HP Snowthrower
1695077 P11528E, 11.5HP Snowthrower (CE/Export)

13HP Snowthrowers

Mfg. No. Description

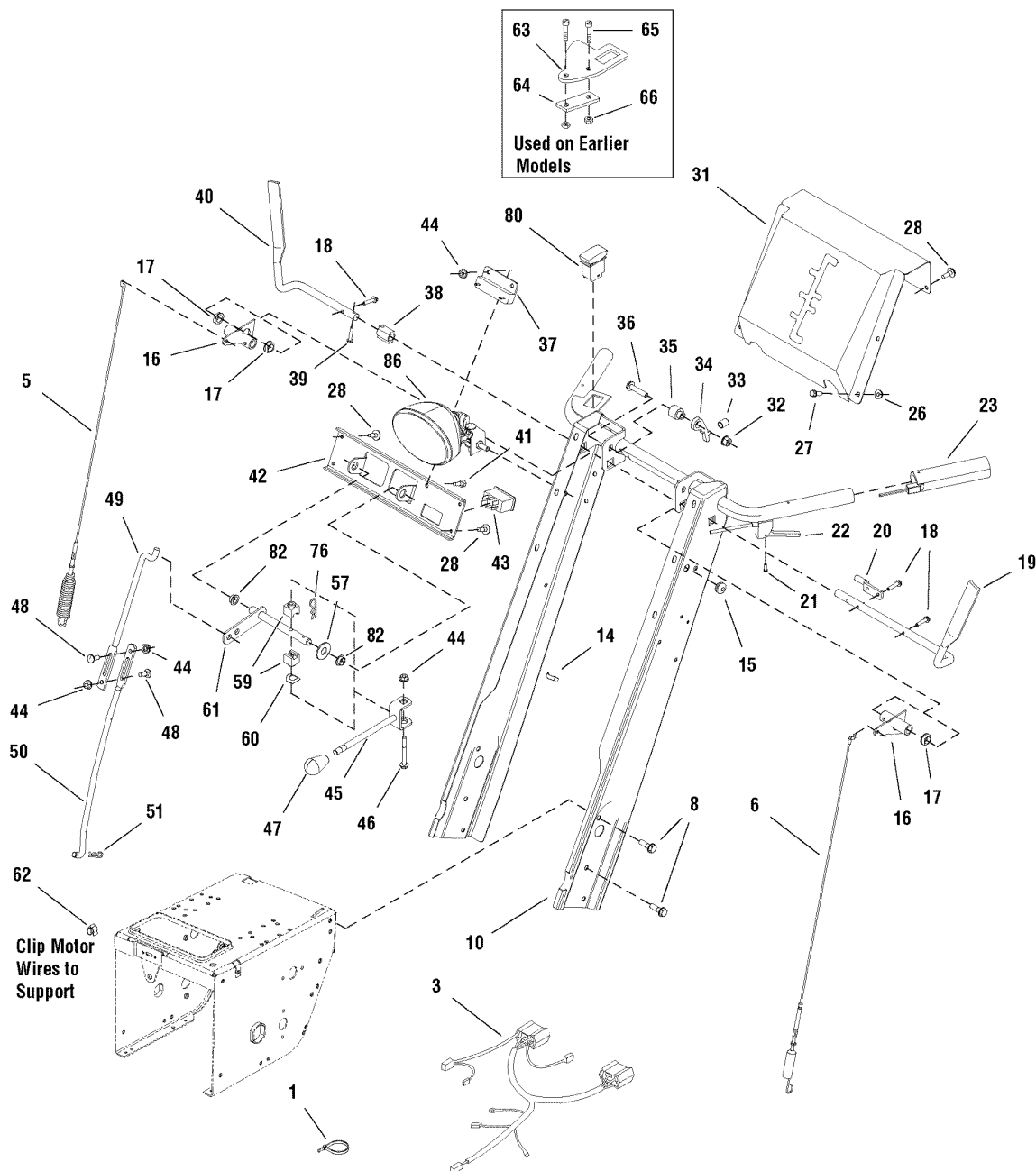
- 1695078 P1332E, 13HP Snowthrower
1695079 P1332E, 13HP Snowthrower (CE/Export)
1695080 P1338E, 13HP Snowthrower
1695081 P1338E, 13HP Snowthrower (CE/Export)

| PRODUCT COMPONENTS | PAGES |
|---|--------------------------|
| Handle & Controls Group | 4 |
| Engine & Frame Group | 8 |
| Auger Drive Group | 12 |
| Auger Housing & Chute Group | 14 |
| Traction Drive Group | 18 |
| Wheels & Tires Group | 22 |
| Decal Group | 24 |
| Gear Box Assembly | 26 |
| Torque Specification Chart | Inside Back Cover |

Handle & Controls Group

987385

NOTE: Unless noted otherwise,
use the standard hardware torque
specification chart.



The above parts group applies to the following Mfg. Nos.:

- 1695074 - P10524E 1695079 - P1332E
- 1695075 - P10524E 1695080 - P1338E
- 1695076 - P11528E 1695081 - P1338E
- 1695077 - P11528E
- 1695078 - P1332E

Handle & Controls Group

| REF NO | PART NO. | QTY. | DESCRIPTION |
|--------|----------|------|--|
| 1 | 2825094 | 6 | TIE, Self Locking .184 Wide 7.31 Long |
| 3 | 1728968 | 1 | HARNESS, Hand Warmers/Spout |
| 5 | 1728114 | 1 | CABLE & SPRING ASSEMBLY, R.H. Auger |
| 6 | 1728115 | 1 | CABLE & SPRING ASSEMBLY, L.H. Traction |
| 8 | 1960729 | 6 | SCREW, Hex Head SER Flange Taptite, R5/16-18 x 1 |
| 10 | 1733890C | 1 | HANDLE ASSEMBLY, Channel |
| 14 | 2834683 | 1 | CLIP, Speed Wire |
| 15 | 1664022 | 1 | GROMMET, 1/2 Diameter |
| 16 | 1725205A | 2 | LEVER & TUBE ASSEMBLY, Clutch |
| 17 | 1732732 | 3 | BUSHING, .52 ID x .585 Square x .22 Long Nylon |
| 18 | 1960471 | 4 | SCREW, Hex Washer Head Taptite, #12-24 x 1 |
| 19 | 1727127 | 1 | HANDLE, Clutch L.H. |
| 20 | 1677453 | 1 | ROD, Control, 3/8 Diameter, 2.81 Long 2" Flat |
| 21 | 1725702 | 1 | SCREW, Pan Head Torx #10 x 1/2 Thick |
| 22 | 1718791 | 1 | CABLE & HANDLE ASSEMBLY |
| 23 | 1723965 | 2 | HAND GRIP, Heated |
| 26 | 1930641 | 4 | NUT, Hex Whiz Lock Flange, 1/4-20 |
| 27 | 1935450 | 4 | CAPSCREW, Hex Washer Head, 1/4-20 x 3/4, G5 |
| 28 | 1925592 | 6 | SCREW, Hex Washer Head Taptite, 1/4-20 x 3/4 |
| 31 | 1667800C | 1 | DASHBOARD |
| 32 | 1960686 | 1 | NUT, Hex Flange 5/16-18 ESNA |
| 33 | 1701342 | 1 | SPRING, Compression, .38 ID x 1 Long |
| 34 | 1705898 | 1 | LATCH, Control, Powdered Metal |
| 35 | 1678579 | 1 | SPACER, .328 ID x .81 OD x .94 Long 1/2 |
| 36 | 1933689 | 1 | SCREW, Hex Whiz Lock Flange, 5/16-18 x 1-1/2 |
| 37 | 1724037 | 1 | RESISTOR BLOCK, 1.53 |
| 38 | 1705899 | 1 | GUIDE, Control, .434 Wide 1.08 Long, Powdered Metal |
| 39 | 1928732 | 1 | SCREW, Hex Washer Head Taptite #10-24 x 1 |
| 40 | 1727128 | 1 | HANDLE, Clutch R.H. |
| 41 | 1923341 | 1 | CAPSCREW, Hex Head 1/4-20 x 3/4, G5 |
| 42 | 1723935A | 1 | BRACKET, Shift Control |
| 43 | 1723967 | 1 | SWITCH, Hand Warmer |
| 44 | 1960685 | 4 | NUT, Hex Keps, 1/4-20 Conical Washer |
| 45 | 1714120 | 1 | ROD & CLEVIS ASSEMBLY, Shift |
| 46 | 1960705 | 1 | SCREW, Hex Whiz Lock Flange, 1/4-20 x 2-1/4 |
| 47 | 1713844 | 1 | KNOB, Hole, .357 Diameter 1.14 Diameter, Sphere Softer |
| 48 | 1931317 | 2 | CARRIAGE BOLT, 1/4-20 x 3/4, G5 |
| 49 | 1726304 | 1 | ROD, 3/8 Diameter, 11.38 Long |
| 50 | 1666255 | 1 | ROD, Shift Lower |
| 51 | 1722460 | 1 | PIN, Quick |
| 57 | 1924361 | 1 | WASHER, 0500 .53 ID x 1-1/4 x .08 Thick |
| 59 | 1668524 | 2 | BLOCK, Pivot |
| 60 | 1668681 | 1 | WASHER, Curved, .525 ID x .98 OD x .014 Thick |
| 61 | 1674567 | 1 | ROD & ARM ASSEMBLY, Pivot, |

Footnotes

* See your local hardware store for replacement halogen bulbs.

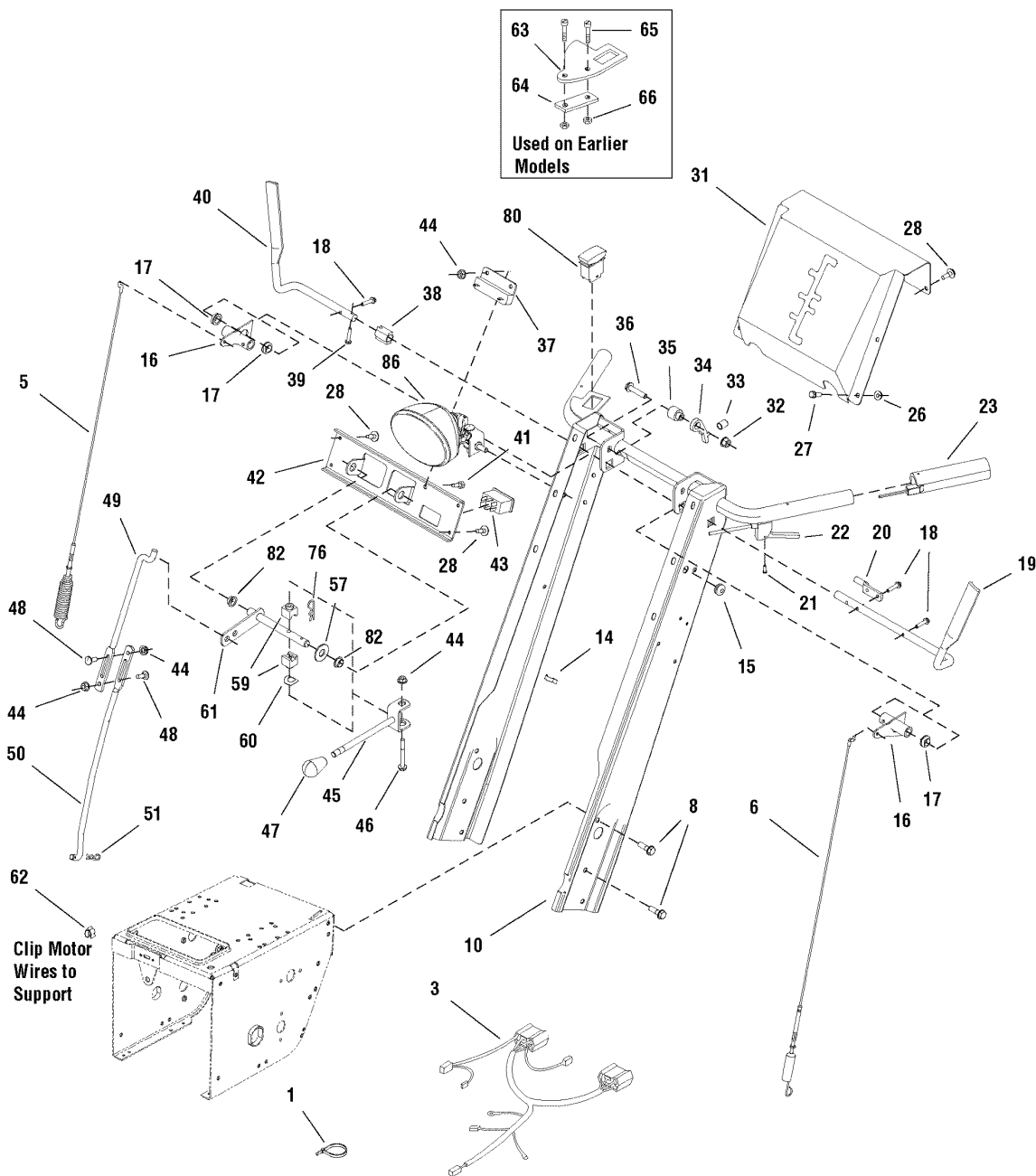
The above parts group applies to the following Mfg. Nos.:

1695074 - P10524E 1695079 - P1332E
 1695075 - P10524E 1695080 - P1338E
 1695076 - P11528E 1695081 - P1338E
 1695077 - P11528E
 1695078 - P1332E

Handle & Controls Group

987385

NOTE: Unless noted otherwise,
use the standard hardware torque
specification chart.



The above parts group applies to the following Mfg. Nos.:

- | | |
|-------------------|------------------|
| 1695074 - P10524E | 1695079 - P1332E |
| 1695075 - P10524E | 1695080 - P1338E |
| 1695076 - P11528E | 1695081 - P1338E |
| 1695077 - P11528E | |
| 1695078 - P1332E | |

Handle & Controls Group

| REF NO | PART NO. | QTY. | DESCRIPTION |
|--------|----------|------|---|
| 62 | 2172434 | 1 | CLIP, .115/.135 Panel |
| 63 | 1729644C | 1 | BRACKET, Switch Top |
| 64 | 1725427C | 1 | BRACKET, Switch Mounting Plate |
| 65 | 1960725 | 2 | SCREW, Truss Head Phillips |
| 66 | 1933896 | 2 | NUT, Hex Lock 10-24 w/Nylon |
| 76 | 1960074 | 1 | CLIP, Hair Pin |
| 80 | 1728969 | 1 | SWITCH, Chute Rotator |
| 82 | 1668185 | 2 | BUSHING, 1/2 ID x 3/4 OD x 1/4 Long Nylon |
| 86 | 1732321 | 1 | HEADLIGHT ASSEMBLY, Oval Amber |
| -- | ----- | 1 | * BULB, 881-12V 27 Watt Halogen |

Footnotes

* See your local hardware store for replacement halogen bulbs.

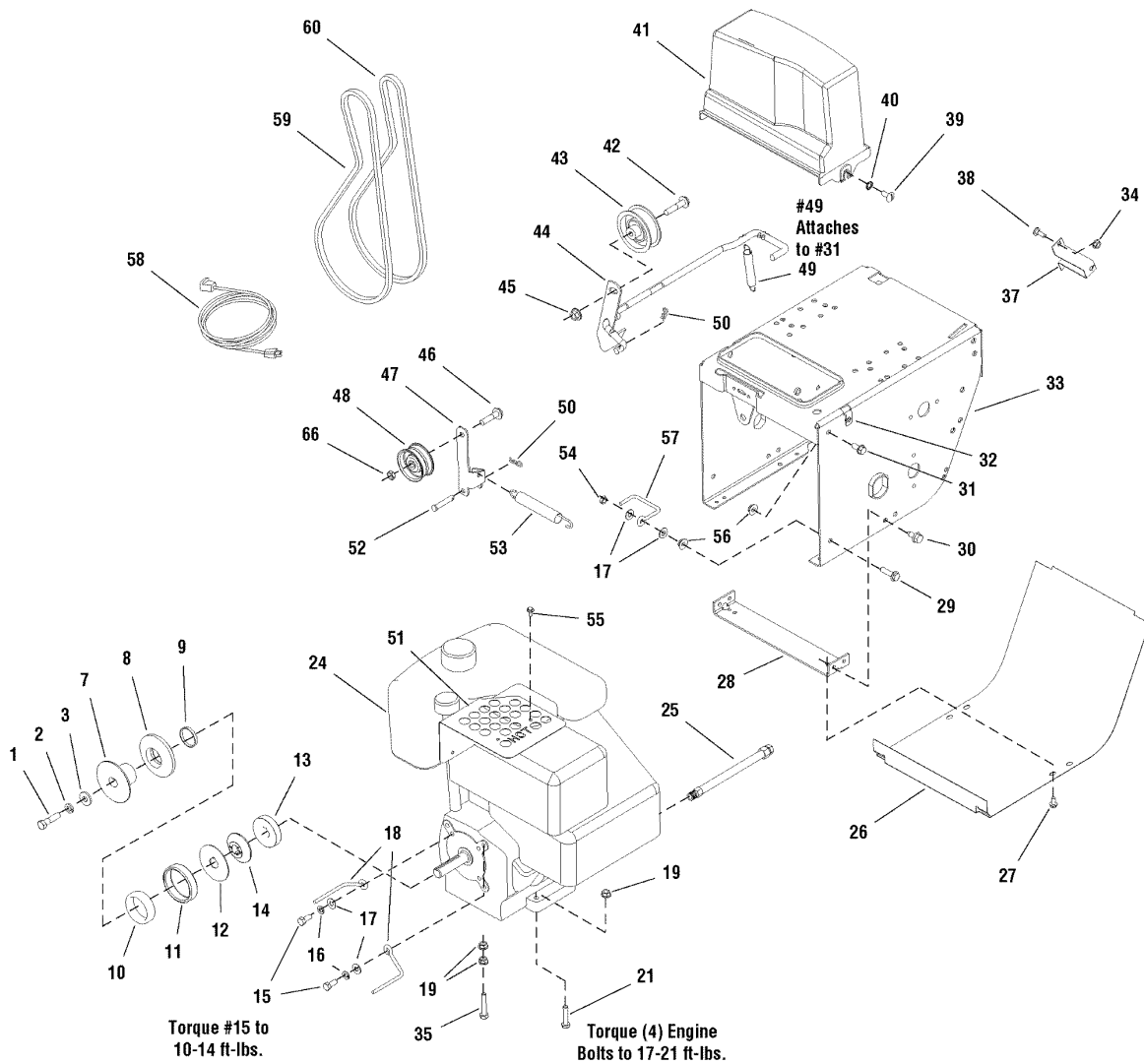
The above parts group applies to the following Mfg. Nos.:

1695074 - P10524E 1695079 - P1332E
1695075 - P10524E 1695080 - P1338E
1695076 - P11528E 1695081 - P1338E
1695077 - P11528E
1695078 - P1332E

Engine & Frame Group

987510

NOTE: Unless noted otherwise,
use the standard hardware torque
specification chart.



The above parts group applies to the following Mfg. Nos.:

- | | |
|-------------------|------------------|
| 1695074 - P10524E | 1695079 - P1332E |
| 1695075 - P10524E | 1695080 - P1338E |
| 1695076 - P11528E | 1695081 - P1338E |
| 1695077 - P11528E | |
| 1695078 - P1332E | |

Engine & Frame Group

| REF NO | PART NO. | QTY. | DESCRIPTION |
|--------|----------|------|---|
| 1 | 1922128 | 1 | CAPSCREW, Hex Head, 3/8-20 x 1-1/2, G8 |
| 2 | 1916965 | 1 | LOCKWSHER, Spring, 3/8 |
| 3 | 1922755 | 1 | WASHER, 3/8, 0.41ID x 1 OD x .13 Thick |
| 7 | 1726864 | 1 | PULLEY, Drive Half |
| 8 | 1726863 | 1 | PULLEY, Engine Half |
| 9 | 1701825 | 1 | WICK, Felt Oil, 4.65 Long .19 Wide |
| 10 | 1701849 | 1 | SPRING, Compression |
| 11 | 1702425 | 1 | SPRING, Compression |
| 12 | 1701818 | 1 | WASHER, Thrust, 0.766 ID x 2-3/4 OD x .06 Thick |
| 13 | 1726868 | 1 | PULLEY, Half, 2-1/4 OD 0.752 ID 0.64 Wide |
| 14 | 1726869 | 1 | PULLEY, Engine Outside |
| 15 | 1921515 | 2 | CAPSCREW, Hex Head, 5/16-24 x 3/4, G5 |
| 16 | 1917356 | 2 | LOCKWASHER, Spring 5/16 |
| 17 | 1919326 | 6 | WASHER, 5/16, 0.34 ID x 3/4 OD x .06 Thick |
| 18 | 1731178 | 2 | STOP, Belt |
| 19 | 2831277 | 5 | NUT, Hex Whiz Lock Flange, 5/16-18 |
| 21 | 1921221 | 3 | CAPSCREW, Hex Head, 5/16-18 x 1-1/2, G5 |
| 24 | 1729715 | 1 | ENGINE, 10.5HP B&S ES INTEK (Used on 24" Models) |
| 24 | 1729717 | 1 | ENGINE, 11.5HP B&S ES INTEK (Used on 28" Models) |
| 24 | 1733313 | 1 | ENGINE, 13HP B&S ES INTEK (Used on 32 & 38" Models) |
| 25 | 1726942 | 1 | HOSE, Oil Drain |
| 26 | 1726870C | 1 | COVER, Bottom Frame |
| 27 | 1925003 | 2 | SCREW, Hex Washer Head Taptite, 1/4-20 x 1/2 |
| 28 | 1727004A | 1 | SUPPORT, Tie Bar |
| 29 | 1930595 | 2 | SCREW, Hex Whiz Lock Flange, 5/16-18 x 1-1/4 |
| 30 | 1664847 | 4 | SCREW, Hex Washer Head Taptite, 5/16-18 x 3/4 |
| 31 | 1930591 | 3 | SCREW, Hex Whiz Lock Flange, 5/16-18 x 3/4 |
| 32 | 1935255 | 2 | NUT, Speed, 5/16-18 Lug Type 1/4 /.15 |
| 33 | 1726568C | 1 | FRAME ASSEMBLY |
| 34 | 1960685 | 2 | NUT, Hex Keps, 1/4-20 Conical Washer |
| 35 | 2822127 | 1 | CAPSCREW, Hex Head, 5/16-18 x 1-3/4, G5 |
| 37 | 1720404A | 1 | SUPPORT, Clutch Cable |
| 38 | 1931317 | 2 | CARRIAGE BOLT, 1/4-20 x 3/4 |
| 39 | 1918249 | 2 | SCREW, Truss Head Slotted, 5/16-18 x 3/4 |
| 40 | 2820426 | 2 | LOCKWASHER, External Tooth, 5/16 |
| 41 | 1725287 | 1 | COVER, Belt |
| 42 | 2860709 | 1 | SCREW, Hex Whiz Lock Flange, 3/8-16 x 1-3/4 |
| 43 | 1726348 | 1 | PULLEY, Idler, 2-3/4 |
| 44 | 1729646A | 1 | ROD & ARM ASSEMBLY, Clutch/Brake |
| 45 | 1928352 | 1 | NUT, Hex Whiz Lock Flange, 3/8-16 |
| 46 | 1960647 | 1 | SCREW, Hex Head, 3/8-16 x 1-1/2 .141 Thick |
| 47 | 1703046A | 1 | ARM, Idler 5-3/4 Long |
| 48 | 1668477 | 1 | PULLEY, Idler |
| 49 | 2159106 | 1 | SPRING, Extension |

Footnotes

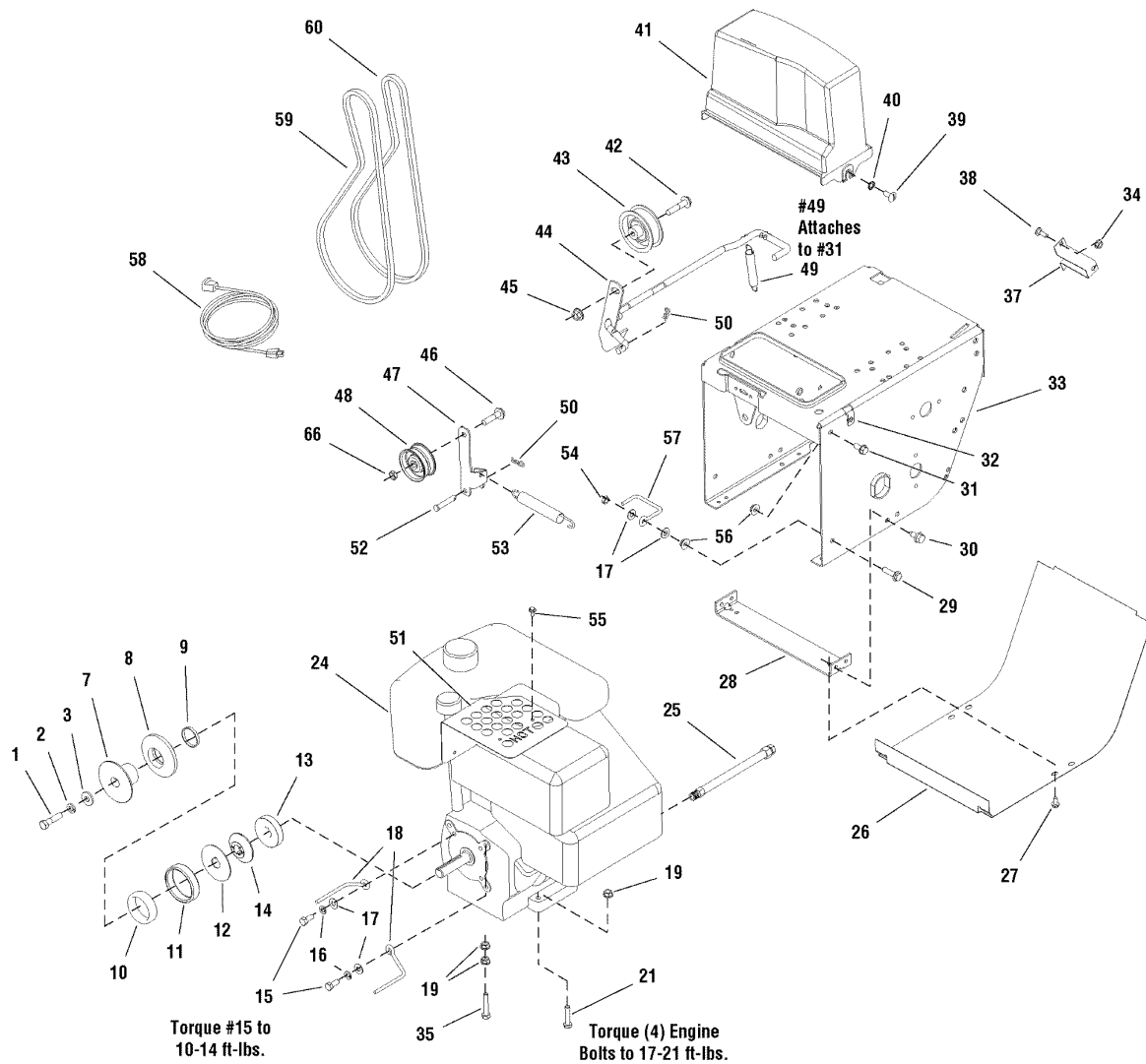
The above parts group applies to the following Mfg. Nos.:

1695074 - P10524E 1695079 - P1332E
 1695075 - P10524E 1695080 - P1338E
 1695076 - P11528E 1695081 - P1338E
 1695077 - P11528E
 1695078 - P1332E

Engine & Frame Group

987510

NOTE: Unless noted otherwise,
use the standard hardware torque
specification chart.



The above parts group applies to the following Mfg. Nos.:

- 1695074 - P10524E 1695079 - P1332E
- 1695075 - P10524E 1695080 - P1338E
- 1695076 - P11528E 1695081 - P1338E
- 1695077 - P11528E
- 1695078 - P1332E

Engine & Frame Group

| REF NO | PART NO. | QTY. | DESCRIPTION |
|--------|----------|------|--|
| 50 | 1722460 | 2 | PIN, Quick |
| 51 | 1725664A | 1 | GUARD, Muffler |
| 52 | 1665994 | 1 | PIN, Flat |
| 53 | 1727149 | 1 | SPRING, Extension |
| 54 | 1923362 | 2 | NUT, Hex Centerlock 5/16-18 |
| 55 | 1929477 | 3 | SCREW, Hex Washer Head Taptite, #10C x 1/2 |
| 56 | 1927557 | 4 | NUT, Hex Whiz Lock Flange, 5/16-18 |
| 57 | 1702969 | 2 | STOP, Belt |
| 58 | 1724064 | 1 | CORD, Electric Start |
| 59 | 1672732 | 1 | V-BELT 3L, Traction Drive |
| 60 | 1732249 | 1 | V-BELT HA, Auger Drive |
| 66 | 1928731 | 1 | NUT, Hex Toplock Jam, 3/8-16 |

Footnotes

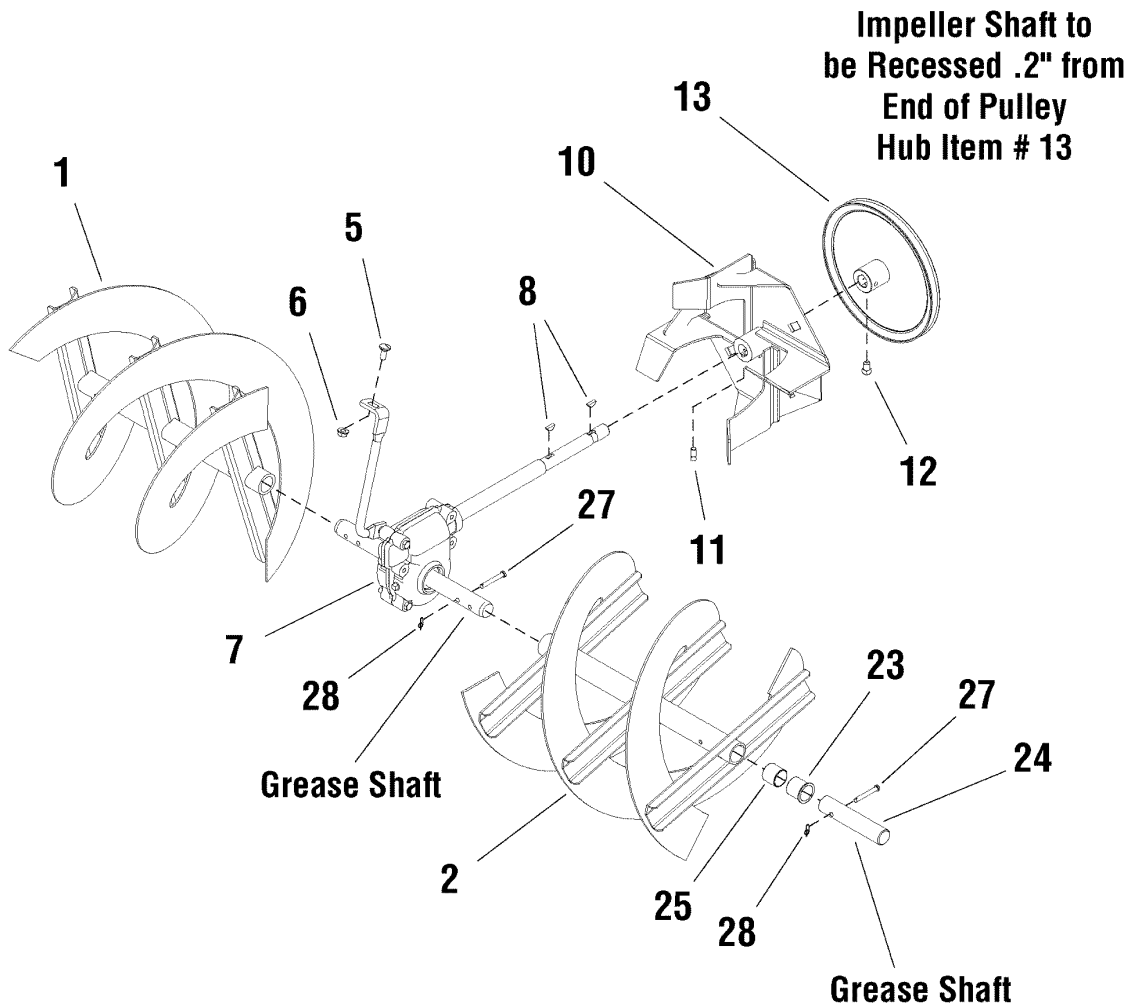
The above parts group applies to the following Mfg. Nos.:

1695074 - P10524E 1695079 - P1332E
1695075 - P10524E 1695080 - P1338E
1695076 - P11528E 1695081 - P1338E
1695077 - P11528E
1695078 - P1332E

Auger Drive Group

987381

NOTE: Unless noted otherwise,
use the standard hardware torque
specification chart.



The above parts group applies to the following Mfg. Nos.:

| | |
|-------------------|------------------|
| 1695074 - P10524E | 1695079 - P1332E |
| 1695075 - P10524E | 1695080 - P1338E |
| 1695076 - P11528E | 1695081 - P1338E |
| 1695077 - P11528E | |
| 1695078 - P1332E | |

Auger Drive Group

| REF NO | PART NO. | QTY. | DESCRIPTION |
|--------|----------|------|--|
| 1 | 1733177A | 1 | AUGER ASSEMBLY, 24" Housing, R.H. |
| 1 | 1733174A | 1 | AUGER ASSEMBLY, 28" Housing, R.H. |
| 1 | 1733171A | 1 | AUGER ASSEMBLY, 32" Housing, R.H. |
| 1 | 1731321A | 1 | AUGER ASSEMBLY, 38" Housing, R.H. |
| 2 | 1733178A | 1 | AUGER ASSEMBLY, 24" Housing, L.H. |
| 2 | 1733175A | 1 | AUGER ASSEMBLY, 28" Housing, L.H. |
| 2 | 1733172A | 1 | AUGER ASSEMBLY, 32" Housing, L.H. |
| 2 | 1731322A | 1 | AUGER ASSEMBLY, 38" Housing, L.H. |
| 5 | 1931333 | 1 | CARRIAGE BOLT, 5/16-18 x 3/4, G5 |
| 6 | 1931277 | 1 | NUT, Hex Whiz Lock Flange, 5/16-18 |
| 7 | 1732303 | 1 | GEAR BOX ASSEMBLY (See Gear Box Assembly Group) |
| 8 | 2818312 | 2 | KEY, Woodruff, 3/16 x 5/8 #61 SAE 1035 |
| 10 | 1612187A | 1 | IMPELLER ASSEMBLY, Large Frame Snow |
| 11 | 1960474 | 1 | SCREW, Set Square Head Cup 3/8-16 x 1/2 G8 |
| 12 | 1928721 | 2 | SET SCREW, Square Head Cup 5/16-18 x 1/2, G8 |
| 13 | 1732468 | 1 | PULLEY, 9 OD 0.752ID .72 Wide w/Hub |
| 23 | 1709894 | 2 | BUSHING, 1.009ID x 1-1/8 OD x 1.13 Long Zytel |
| 24 | 1733104A | 2 | SHAFT, 0.98 Diameter 4.85 Long |
| 25 | 1733754 | 2 | BUSHING, 1.009ID x 1-1/8 OD x 1 Long Zytel (Used only on 24, 28, & 32" Models) |
| 27 | 1668344 | 4 | PIN, Shear, .248 ID x 1-3/4 Long |
| 28 | 7023590 | 4 | COTTER PIN, 1/4" Self Locking |

Footnotes

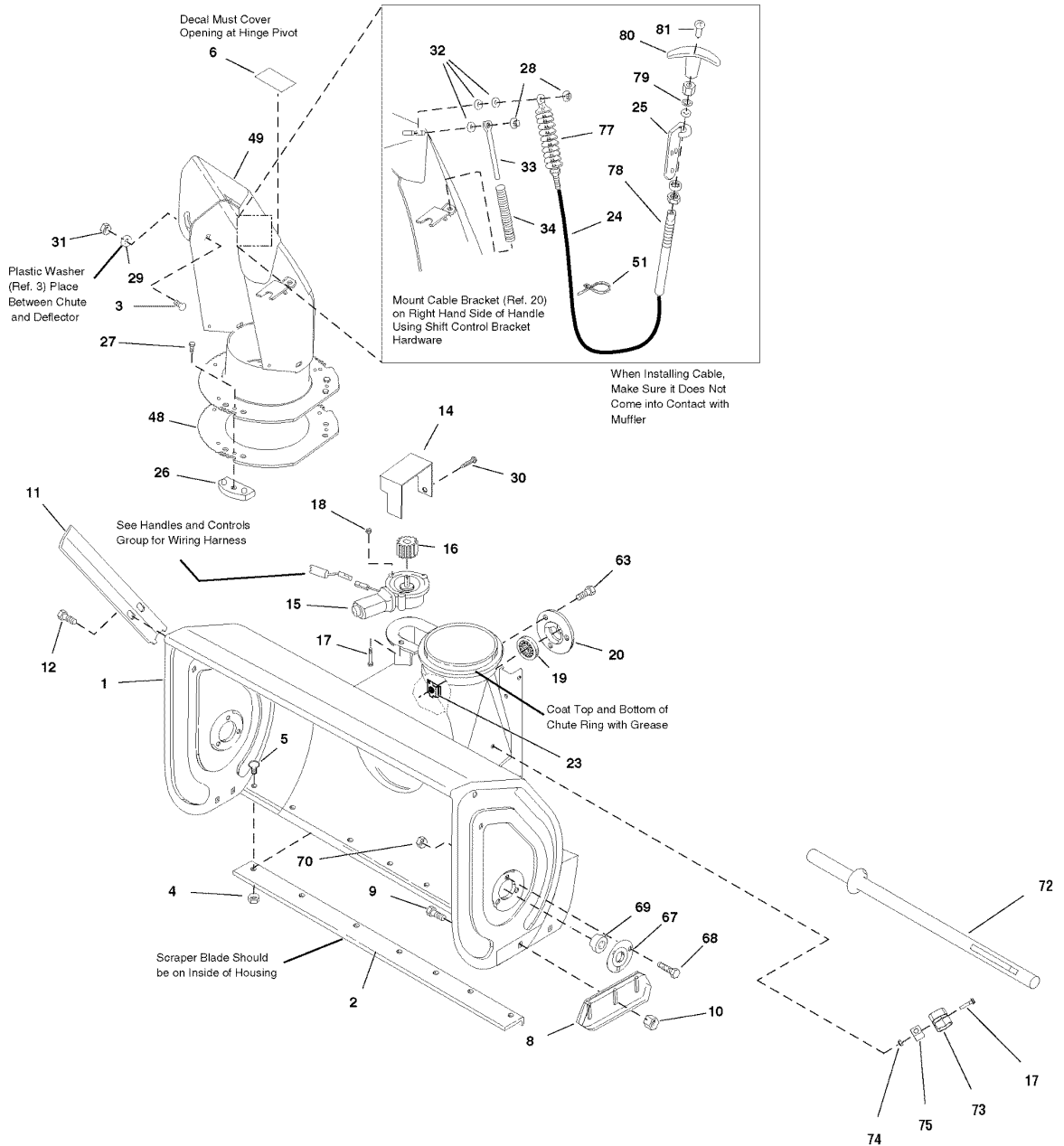
The above parts group applies to the following Mfg. Nos.:

1695074 - P10524E 1695079 - P1332E
 1695075 - P10524E 1695080 - P1338E
 1695076 - P11528E 1695081 - P1338E
 1695077 - P11528E
 1695078 - P1332E

Auger Housing & Chute Group

987430

**NOTE: Unless noted otherwise,
use the standard hardware torque
specification chart.**



The above parts group applies to the following Mfg. Nos.:

- 1695074 - P10524E
- 1695075 - P10524E
- 1695076 - P11528E
- 1695077 - P11528E
- 1695078 - P1332E
- 1695079 - P1332E
- 1695080 - P1338E
- 1695081 - P1338E

Auger Housing & Chute Group

| REF NO | PART NO. | QTY. | DESCRIPTION |
|--------|----------|------|---|
| 1 | 1732121C | 1 | HOUSING ASSEMBLY, 24" |
| 1 | 1732296C | 1 | HOUSING ASSEMBLY, 28" |
| 1 | 1732299C | 1 | HOUSING ASSEMBLY, 32" |
| 1 | 1732271C | 1 | HOUSING ASSEMBLY, 38" |
| 2 | 1709946A | 1 | BLADE, Scraper for 24" |
| 2 | 1709947A | 1 | BLADE, Scraper for 28" |
| 2 | 1709948A | 1 | BLADE, Scraper for 32" |
| 2 | 1723921A | 1 | BLADE, Scraper for 38" |
| 3 | 1931333 | 1 | CARRIAGE BOLT, 5/16-18 x 3/4, G5 |
| 4 | 1935048 | 9 | NUT, Hex Flange, 5/16-18 Two-Way Lock |
| 5 | 1960699 | 9 | CARRIAGE BOLT, 5/16-18 x 5/8, G5 |
| 6 | 1706085 | 2 | DECAL, Orange Strip Hinge Snow Chute (Used on 24, 28, & 32" Models) |
| 6 | 1733598 | 2 | DECAL, Orange Strip Hinge Snow Chute (Used on 38" Models) |
| 8 | 1727854A | 2 | SKID SHOE (Used on 24, 28, & 32" Models) |
| 8 | 1725747A | 2 | SKID SHOE (Used on 38" Models) |
| 9 | 1960711 | 4 | CARRIAGE BOLT, 3/8-16 x 3/4, G5 (Used on 24, 28, & 32" Models) |
| 9 | 1960702 | 4 | CARRIAGE BOLT, 3/8-16 x 1, G5 (Used on 38" Models) |
| 10 | 1960687 | 4 | NUT, Hex Flange, 3/8-16 ESNA |
| 11 | 1733102C | 2 | CUTTER, Drift w/Tabs |
| 12 | 1664847 | 2 | SCREW, Hex Washer Head Taptite, 5/16-18 x 3/4 |
| 14 | 1729645A | 1 | COVER, Gear, 38" |
| 15 | 1728965 | 1 | MOTOR, Spout Rotator, 38/42" |
| 16 | 1728967 | 1 | PINION, 1.417 OD .296 Slot 1-1/4 Long 16T Powdered Metal |
| 17 | 2860604 | 5 | SCREW, Hex Washer Head Slot, #10C x 1-1/4, G2 |
| 18 | 1960745 | 3 | NUT, Hex Whiz Lock Flange, #10-24 |
| 19 | 1729578 | 1 | BEARING, 3/4 ID x 1.78 OD x .61 Long Greased |
| 20 | 1665982A | 1 | BEARING RETAINER |
| 23 | 1930659 | 3 | RETAINER, Nut, 5/16-18 .057/.092 |
| 24 | 1720446 | 1 | CABLE & KNOB ASSEMBLY |
| 25 | 1726411A | 1 | BRACKET, Chute Cable Snow, .179 Thick |
| 26 | 1666613 | 3 | HOLD DOWN, Chute, Nylon |
| 27 | 1960001 | 3 | SCREW, Hex Washer Head Taptite, 10-14 x 5/8 |
| 28 | 1960126 | 2 | NUT, Push Pal, 1/4 Diameter Stud Capped |
| 29 | 2860210 | 1 | WASHER, Nylon, .388 x 1.12 x .03 |
| 30 | 1927428 | 1 | SCREW, Hex Washer Head Taptite, 1/4-20 x 3/8 |
| 31 | 1960686 | 1 | NUT, Hex Flange, 5/16-18 ESNA |
| 32 | 1702219 | 3 | SPACER, .265 ID x .37 |
| 33 | 1611945 | 1 | ROD, 5/16 Diameter 5.88 Long |
| 34 | 1611939 | 1 | SPRING, Compression |
| 48 | 1717477A | 1 | GEAR, Chute, 10 OD 6.65 ID .105 Thick |
| 49 | 1733249C | 1 | CHUTE ASSEMBLY, with Pigtail Orange (Used on 24, 28, & 32" Models) |
| 49 | 1731433C | 1 | CHUTE ASSEMBLY, with Pigtail Orange (Used on 38" Models) |
| 51 | 2825094 | 1 | TIE, Self Locking, .184 Wide 7.31 Long |
| 63 | 1960738 | 1 | SCREW, Hex Whiz Lock Flange, 5/16-18 x 3/4 |

Footnotes

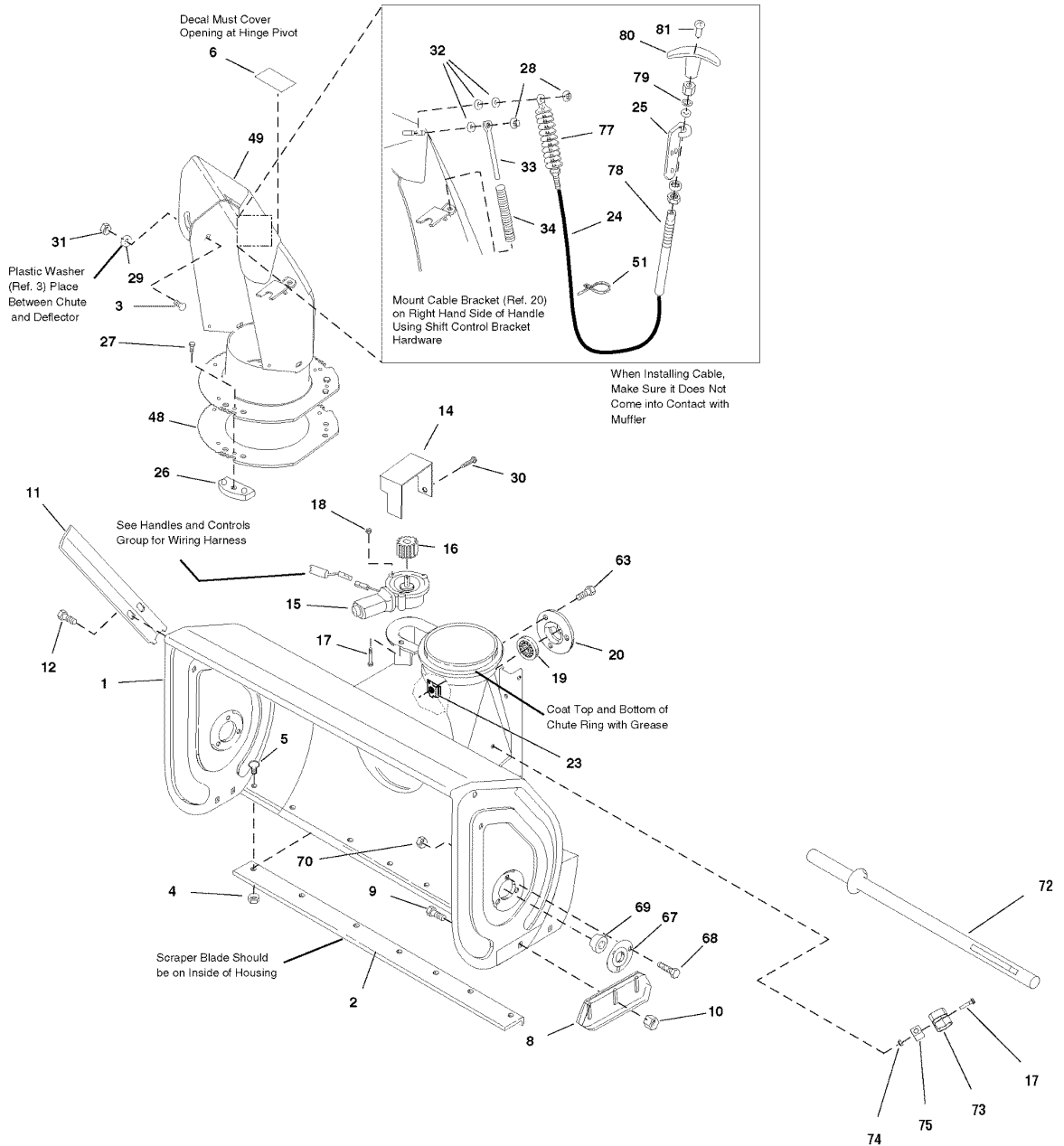
The above parts group applies to the following Mfg. Nos.:

1695074 - P10524E 1695079 - P1332E
 1695075 - P10524E 1695080 - P1338E
 1695076 - P11528E 1695081 - P1338E
 1695077 - P11528E
 1695078 - P1332E

Auger Housing & Chute Group

987430

**NOTE: Unless noted otherwise,
use the standard hardware torque
specification chart.**



The above parts group applies to the following Mfg. Nos.:

- 1695074 - P10524E
- 1695075 - P10524E
- 1695076 - P11528E
- 1695077 - P11528E
- 1695078 - P1332E
- 1695079 - P1332E
- 1695080 - P1338E
- 1695081 - P1338E

Auger Housing & Chute Group

| REF NO | PART NO. | QTY. | DESCRIPTION |
|--------|----------|------|--|
| 67 | 2172278A | 1 | FLANGE, Bearing, 1.937 |
| 68 | 1925205 | 1 | CAPSCREW, Hex Head, 5/16-18 x 5/8, G5 |
| 69 | 1733105 | 1 | BEARING, Ball, 1.002 ID 2.049 OD 1.09 Long |
| 70 | 1931277 | 1 | NUT, Hex Whiz Lock Flange, 5/16-18 |
| 72 | 1733209 | 1 | STICK, Snow Cleanout w/Brush, Plastic |
| 73 | 722242 | 1 | CLIP, Retainer |
| 74 | 1933896 | 1 | NUT, Hex Lock, 10-24 w/Nylon Insert |
| 75 | 724565 | 1 | BLOCK, Universal Pivot |
| 77 | 1611989 | 1 | BOOT, Bellows |
| 78 | 1719140 | 1 | COLLET |
| 79 | 1719139 | 1 | SEAL, Rod |
| 80 | 1719138 | 1 | KNOB |
| 81 | 1960600 | 1 | SCREW, 8-32 |

Footnotes

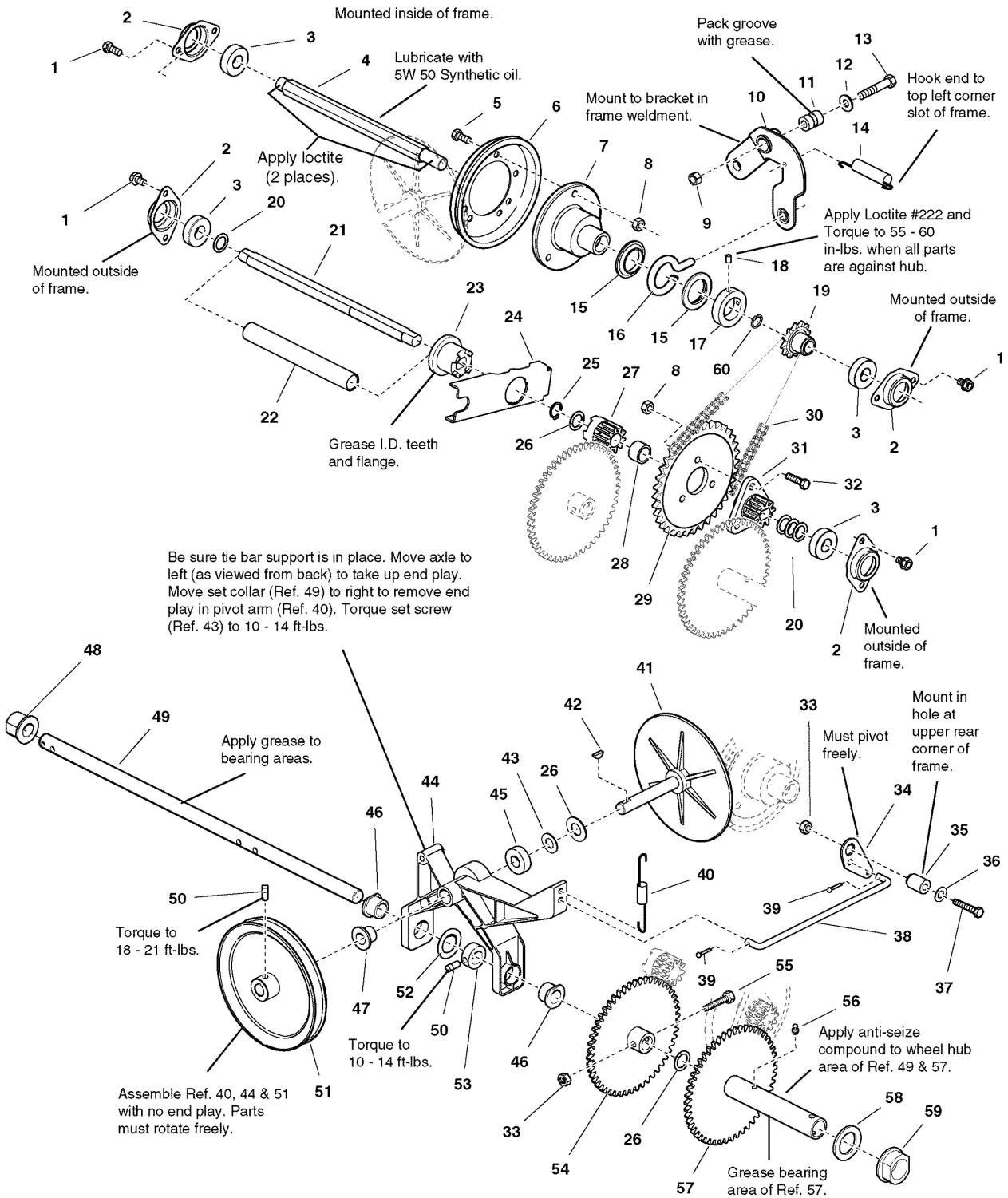
The above parts group applies to the following Mfg. Nos.:

1695074 - P10524E 1695079 - P1332E
1695075 - P10524E 1695080 - P1338E
1695076 - P11528E 1695081 - P1338E
1695077 - P11528E
1695078 - P1332E

Traction Drive Group

NOTE: Unless noted otherwise, use the standard hardware torque specification chart.

987054



The above parts group applies to the following Mfg. Nos.:

- 1695074 - P10524E 1695079 - P1332E
- 1695075 - P10524E 1695080 - P1338E
- 1695076 - P11528E 1695081 - P1338E
- 1695077 - P11528E
- 1695078 - P1332E

Traction Drive Group

| REF NO | PART NO. | QTY. | DESCRIPTION |
|--------|----------|------|---|
| 1 | 1930601 | 8 | SCREW, Hex Washer Head Taptite, 5/16-18 x 5/8 |
| 2 | 1667341 | 4 | RETAINER, Bearing |
| 3 | 1722703 | 4 | BEARING, Ball |
| 4 | 1726856 | 1 | SHAFT, Hex |
| 5 | 1921332 | 3 | CAPSCREW, Hex Head, 5/16-18 x 3/4 G5 |
| 6 | 1725428 | 1 | DISC, Friction with Insert |
| 7 | 1665995 | 1 | HUB, Friction Disc |
| 8 | 1960684 | 6 | NUT, Hex Keps, 5/16-18, Conical Washer |
| 9 | 1960687 | 1 | NUT, Hex Flange, 3/8-16 ESNA |
| 10 | 1669256 | 1 | ARM ASSEMBLY, Shift w/Bushing |
| 11 | 1666114 | 1 | BUSHING, 19/50 ID x 3/4 OD x 1-3/100 LG |
| 12 | 1924940 | 1 | WASHER, 3/8 |
| 13 | 1923701 | 1 | CAPSCREW, Hex Head, 3/8-16 x 2 G5 |
| 14 | 1668255 | 1 | SPRING, Extension |
| 15 | 1678956 | 2 | COLLAR, Thrust |
| 16 | 1666207 | 1 | PIN, Loop |
| 17 | 1667335 | 1 | COLLAR, Set |
| 18 | 1724333 | 2 | SCREW, Set Square Head Cup Point, 1/4-20 x 1/2 |
| 19 | 1726931 | 1 | SPROCKET, 10 Tooth |
| 20 | 2860164 | 4 | WASHER, 5/8 |
| 21 | 1718752 | 1 | JACKSHAFT, Double D |
| 22 | 1720298 | 1 | SPRING, Complete |
| 23 | 1718689 | 1 | CLUTCH, Sliding, 1/5LG, Powdered Metal |
| 24 | 1720078A | 1 | ARM, Clutch |
| 25 | 2827732 | 1 | RING, Retaining Extension |
| 26 | 1960114 | 3 | WASHER, 3/4 |
| 27 | 1718688 | 1 | GEAR, Stationary Clutch |
| 28 | 1679556 | 1 | SPACER, Heat Treated, 31/100 LG |
| 29 | 1667330 | 1 | SPROCKET |
| 30 | 1666980 | 1 | CHAIN, Roller |
| 31 | 1718687 | 1 | GEAR, Double D |
| 32 | 1921333 | 3 | CAPSCREW, Hex Head, 5/16-18 x 1 G5 |
| 33 | 1960686 | 2 | NUT, Hex Flange, 5/16-18 ESNA |
| 34 | 1700473 | 1 | BELLCRANK |
| 35 | 1666106 | 1 | BUSHING, 11/32 ID x 3/4 OD x 1-3/50 LG |
| 36 | 1919326 | 1 | WASHER, 11/32 x 3/4 x 1/16 |
| 37 | 1922127 | 1 | CAPSCREW, Hex Head, 5/16-18 x 1-3/4 G5 |
| 38 | 1726467 | 1 | ROD, Pivot, 9-15/100 LG |
| 39 | 1722460 | 1 | PIN, Quick |
| 40 | 1725666 | 1 | SPRING, Extension |
| 41 | 1719879 | 1 | DRIVE DISC w/SPINDLE |
| 42 | 2818312 | 1 | KEY, Woodruff, 47/250 x 5/8 |
| 43 | 1924366 | 1 | WASHER, 5/8 |
| 44 | 1670849 | 1 | ARM, Pivot with Bushings & Bearings (Includes Ref. Nos 45, 46, 47 & 48) |

Footnotes

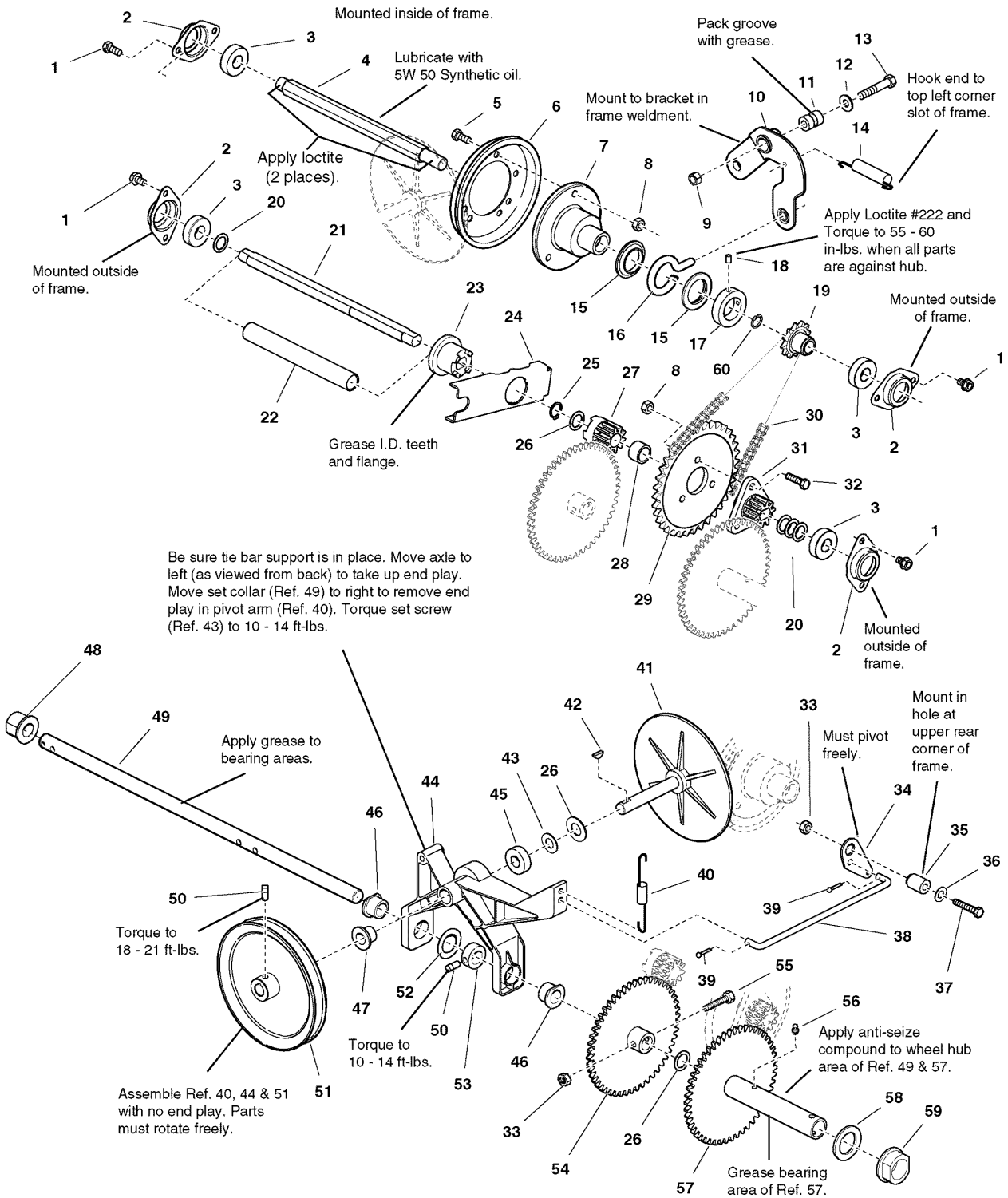
The above parts group applies to the following Mfg. Nos.:

1695074 - P10524E 1695079 - P1332E
 1695075 - P10524E 1695080 - P1338E
 1695076 - P11528E 1695081 - P1338E
 1695077 - P11528E
 1695078 - P1332E

Traction Drive Group

NOTE: Unless noted otherwise, use the standard hardware torque specification chart.

987054



The above parts group applies to the following Mfg. Nos.:

- 1695074 - P10524E 1695079 - P1332E
- 1695075 - P10524E 1695080 - P1338E
- 1695076 - P11528E 1695081 - P1338E
- 1695077 - P11528E
- 1695078 - P1332E

Traction Drive Group

| REF NO | PART NO. | QTY. | DESCRIPTION |
|--------|----------|------|--|
| 45 | 1665521 | 1 | BEARING, Ball |
| 46 | 1666425 | 2 | BUSHING, 3/4 ID x 1 OD x 3/4 LG, Powdered Metal |
| 47 | 1666855 | 1 | BUSHING, 5/8 ID x 13/16 OD x 3/4 LG, Powdered Metal |
| 48 | 1666001 | 1 | BUSHING, 377/100 ID x 1-13/100 OD x 1 LG, Powdered Metal |
| 49 | 1720299 | 1 | AXLE, Round |
| 50 | 1928721 | 2 | SCREW, Set Square Head Cup Point, 5/16-18 x 1/2 G8 |
| 51 | 1672595A | 1 | PULLEY AND HUB ASSEMBLY |
| 52 | 1919394 | 1 | WASHER |
| 53 | 1729254 | 1 | COLLAR, Set |
| 54 | 1720300 | 1 | GEAR AND HUB ASSEMBLY, RH |
| 55 | 1930570 | 1 | CAPSCREW, Hex Head, 5/16-18 x 1-1/2 G8 |
| 56 | 2812808 | 1 | FITTING, Lube 1/4-28, Tapered with Check Ball |
| 57 | 1730228 | 1 | GEAR AND HUB ASSEMBLY, with Bushings |
| 58 | 2860169 | 1 | WASHER, 1-47/250 |
| 59 | 1720305 | 1 | BUSHING, 1-27/200 ID x 1-157/250 OD x 3/4 LG |
| 60 | 2172206 | 1 | RING, Retaining External #87 |

Footnotes

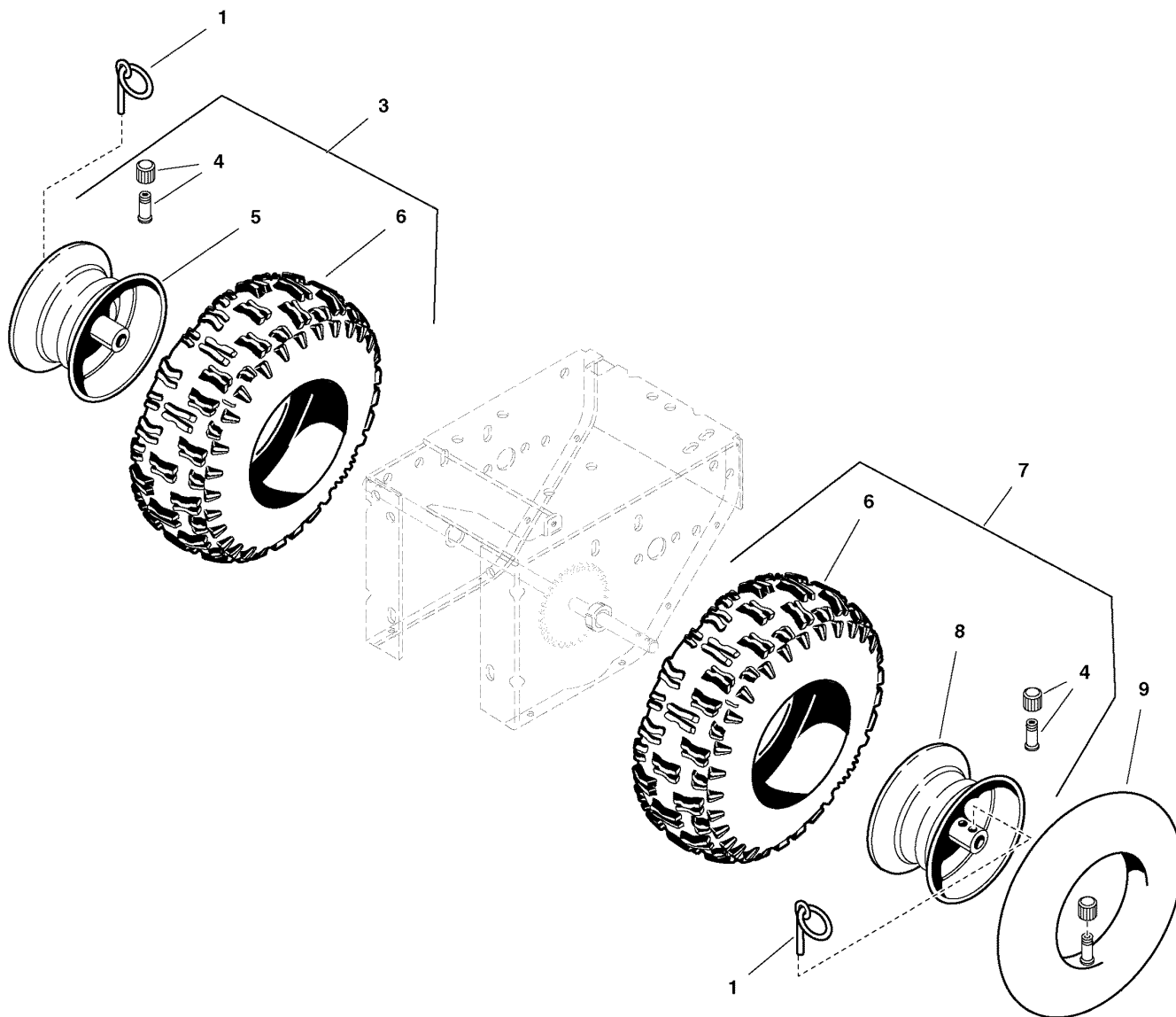
The above parts group applies to the following Mfg. Nos.:

1695074 - P10524E 1695079 - P1332E
1695075 - P10524E 1695080 - P1338E
1695076 - P11528E 1695081 - P1338E
1695077 - P11528E
1695078 - P1332E

Wheels & Tires Group

NOTE: Unless noted otherwise,
use the standard hardware torque
specification chart.

986549



The above parts group applies to the following Mfg. Nos.:

1695074 - P10524E 1695079 - P1332E
1695075 - P10524E 1695080 - P1338E
1695076 - P11528E 1695081 - P1338E
1695077 - P11528E
1695078 - P1332E

Wheels & Tires Group

| REF NO | PART NO. | QTY. | DESCRIPTION |
|---------------|-----------------|-------------|---|
| 1 | 1731186 | 2 | PIN, KLIK, Ring |
| 3 | 1726743 | 1 | WHEEL & TIRE ASSEMBLY, Snow R.H. (Used on 24 & 28" Models) |
| 3 | 1726745 | 1 | WHEEL & TIRE ASSEMBLY, Snow R.H. (Used on 32 & 38" Models) |
| 4 | 2172353 | 2 | VALVE STEM & CAP ASSEMBLY, Air |
| 5 | 1714242 | 1 | HUB, Wheel R.H., 3-3/4 Wide 8 Diameter 3/4 ID (Used on 24 & 28" Models) |
| 5 | 1722762 | 1 | HUB, Wheel, 5-3/8 Wide 8 Diameter 3/4 ID (Used on 32 & 38" Models) |
| 6 | 1727074 | 2 | TIRE, 4.80/4.00-8, X-TRAC TL (Used on 24 & 28" Models) |
| 6 | 1727075 | 2 | TIRE, 16 x 6.5-8 X-TRAC TL (Used on 32 & 38" Models) |
| 7 | 1726742 | 1 | WHEEL & TIRE ASSEMBLY, Snow L.H. (Used on 24 & 28" Models) |
| 7 | 1726744 | 1 | WHEEL & TIRE ASSEMBLY, Snow L.H. (Used on 32 & 38" Models) |
| 8 | 1720307 | 1 | HUB, Wheel L.H., 3-3/4 Wide 8 Diameter 1-1/8 ID (Used on 24 & 28" Models) |
| 8 | 1722761 | 1 | HUB, Wheel 5-3/8 Wide 8 Diameter 1-1/8 ID (Used on 32 & 38" Models) |
| 9 | 2153038 | 2 | TUBE, Tire |

Footnotes

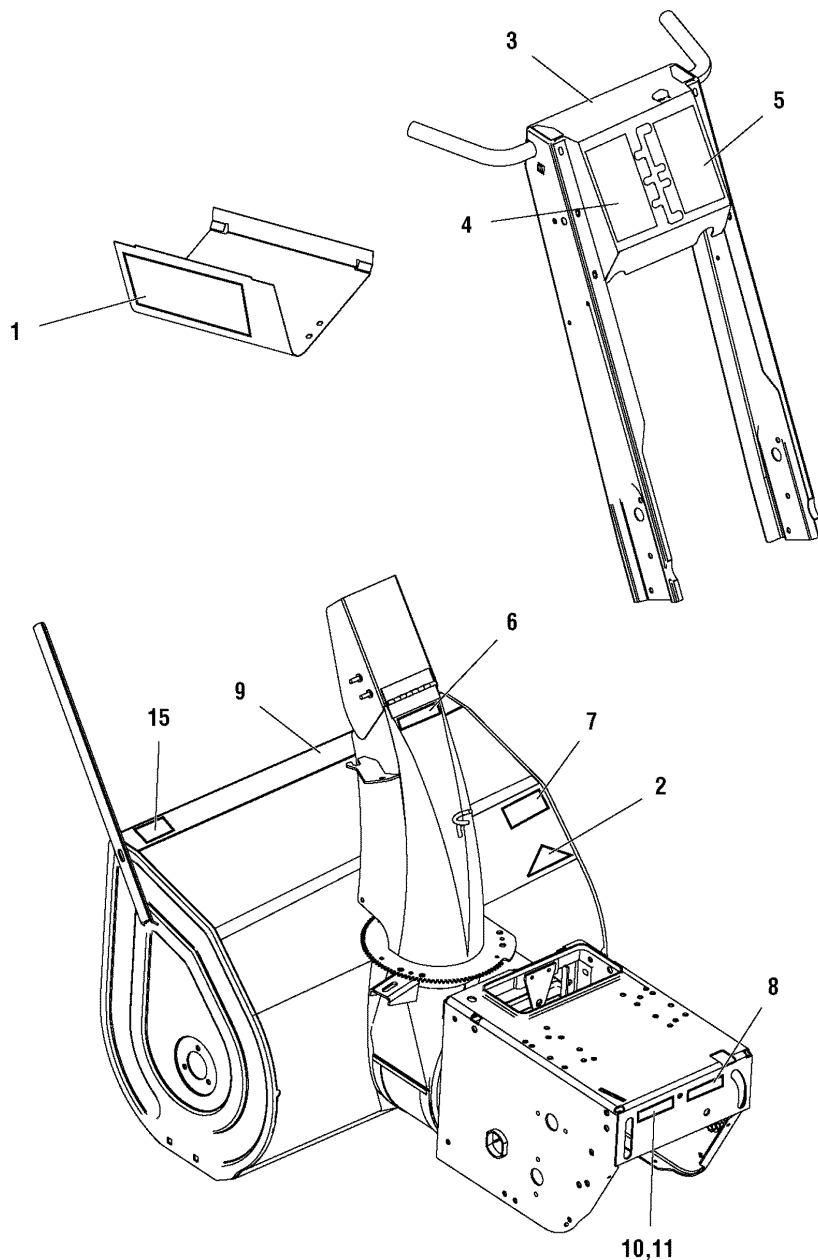
The above parts group applies to the following Mfg. Nos.:

1695074 - P10524E 1695079 - P1332E
1695075 - P10524E 1695080 - P1338E
1695076 - P11528E 1695081 - P1338E
1695077 - P11528E
1695078 - P1332E

Decal Group

987386

NOTE: Unless noted otherwise,
use the standard hardware torque
specification chart.



The above parts group applies to the following Mfg. Nos.:

- | | |
|-------------------|------------------|
| 1695074 - P10524E | 1695079 - P1332E |
| 1695075 - P10524E | 1695080 - P1338E |
| 1695076 - P11528E | 1695081 - P1338E |
| 1695077 - P11528E | |
| 1695078 - P1332E | |

Decal Group

| REF NO | PART NO. | QTY. | DESCRIPTION |
|--------|----------|------|--|
| 1 | 1720454 | 1 | DECAL, Touch Up Paint, Orange, Black, Red |
| 2 | 1733156 | 1 | DECAL, OPEI Certified ANSI B71.3 2007 |
| 3 | 1726947 | 1 | DECAL, Dashboard EZ Turn Channel Handles DOM |
| 4 | 1733266 | 1 | DECAL, 4 2 R1 Ground Speed R.H., LF |
| 5 | 1733297 | 1 | DECAL, 5 3 R2 Shift Pattern, L.H., LF |
| 6 | 1733057 | 1 | DECAL, Danger Amputation Hazard 2007 Snow |
| 7 | 1716532 | 1 | DECAL, Danger Avoid Injury from Auger |
| 8 | 1713056 | 1 | DECAL, Patent Snowthrower |
| 9 | 1733071 | 1 | DECAL, Simplicity Stripe 24" Long 2007 Snow |
| 9 | 1733072 | | DECAL, Simplicity Stripe 28" Long 2007 Snow |
| 9 | 1733073 | | DECAL, Simplicity Stripe 32" Long 2007 Snow |
| 9 | 1733074 | | DECAL, Simplicity Stripe 38" Long 2007 Snow |
| 10 | 1731420 | 1 | STICKER, Serial w/Bar Code 2.19 x 3.68 2006 |
| 11 | 1731389 | 1 | MYLAR OVERLAY, 2.18 x 3.68 3000/ROLL |
| 15 | 1733269 | 1 | DECAL, Signature Pro 10524P SMI Snow |
| 15 | 1733268 | | DECAL, Signature Pro 11528P SMI Snow |
| 15 | 1733267 | | DECAL, Signature Pro 1332P SMI Snow |
| 15 | 1733265 | | DECAL, Signature Pro 1338P SMI Snow |
| -- | 1725507 | 1 | DECAL, Power Boost, LF Snow (Not Shown) |

Footnotes

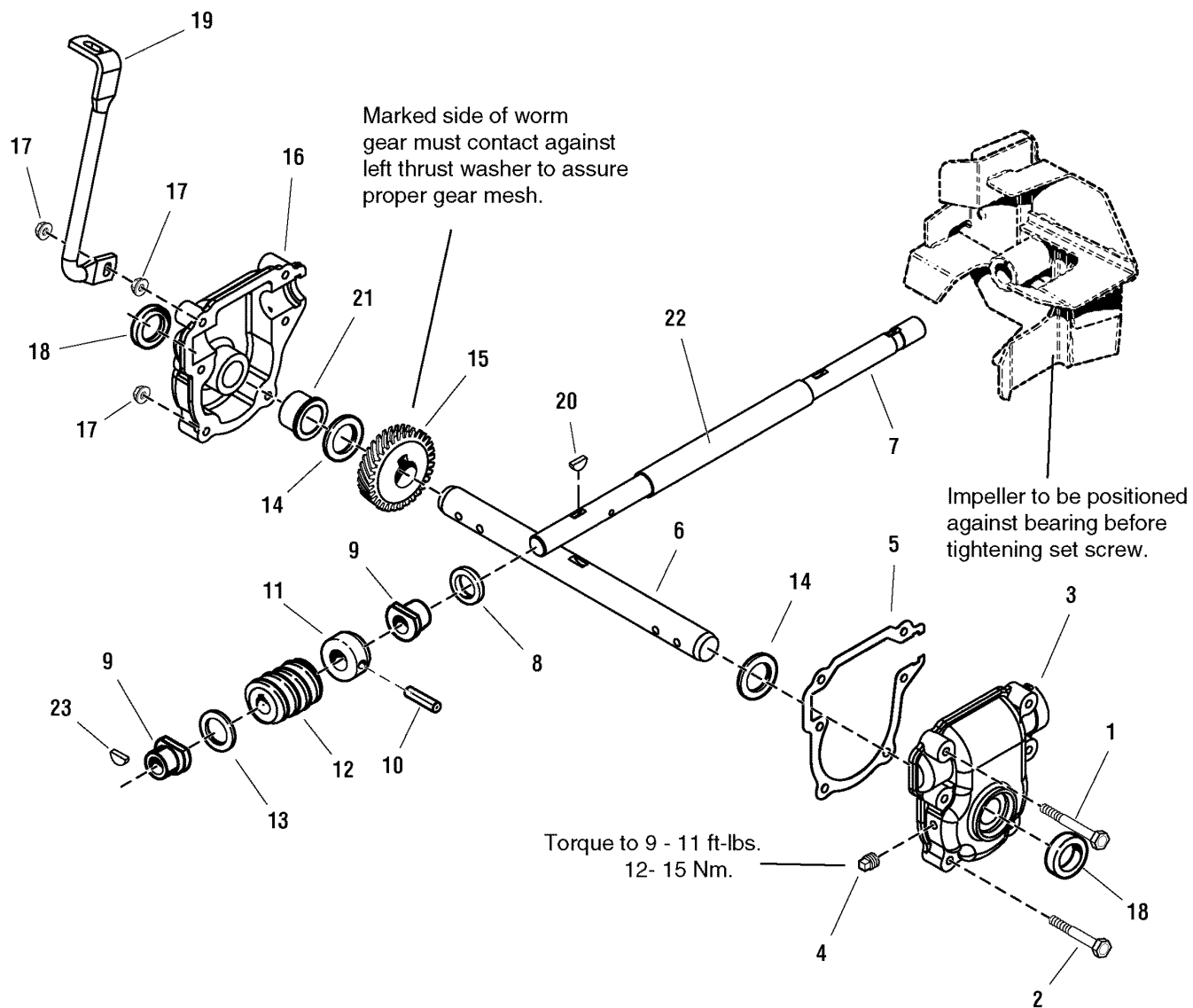
The above parts group applies to the following Mfg. Nos.:

1695074 - P10524E 1695079 - P1332E
1695075 - P10524E 1695080 - P1338E
1695076 - P11528E 1695081 - P1338E
1695077 - P11528E
1695078 - P1332E

Gear Box Assembly

NOTE: Unless noted otherwise, use the standard hardware torque specification chart.

1732303



The above parts group applies to the following Mfg. Nos.:

| | |
|-------------------|------------------|
| 1695074 - P10524E | 1695079 - P1332E |
| 1695075 - P10524E | 1695080 - P1338E |
| 1695076 - P11528E | 1695081 - P1338E |
| 1695077 - P11528E | |
| 1695078 - P1332E | |

Gear Box Assembly

| REF NO | PART NO. | QTY. | DESCRIPTION |
|---------------|-----------------|-------------|-----------------------------|
| 1 | 1923282 | 1 | CAPSCREW, 1/4-20 x 2-1/2 |
| 2 | 1960346 | 5 | CAPSCREW, 1/4-20 x 2-1/4 |
| 3 | 1612136 | 1 | GEAR CASE, L.H. |
| 4 | 1668971 | 1 | TAPERED PIPE PLUG |
| 5 | 1612124 | 1 | GASKET |
| 6 | 1732440 | 1 | SHAFT, Auger Cutoff |
| 7 | 1732182 | 1 | SHAFT, Worm Cutoff |
| 8 | 1612093 | 2 | SEAL, Oil |
| 9 | 1612149 | 2 | FLANGE BUSHING |
| 10 | 2836098 | 1 | PIN, Drive Lock |
| 11 | 1612127 | 1 | THRUST COLLAR |
| 12 | 1612142 | 1 | ROLLED WORM CASE |
| 13 | 2168111 | 1 | THRUST WASHER |
| 14 | 2118315 | 2 | THRUST WASHER |
| 15 | 1612141 | 1 | GEAR, Worm |
| 16 | 1612137 | 1 | GEAR CASE, R.H. |
| 17 | 1930642 | 7 | NUT, Top Lock Flange 1/4-20 |
| 18 | 2118118 | 1 | SEAL |
| 19 | 1732152 | 1 | WIREFORM BRACKET |
| 20 | 2818312 | 1 | KEY, Woodruff .18 x .62 |
| 21 | 1732991 | 2 | BUSHING |
| 22 | 1612111 | 1 | TUBE |
| 23 | 2830246 | 1 | KEY, Woodruff 1/4 x 3/4 |

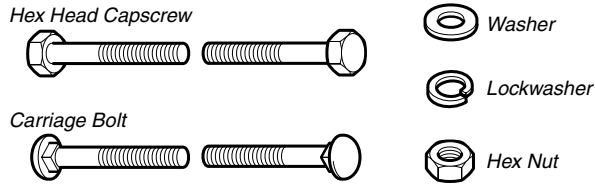
Footnotes

The above parts group applies to the following Mfg. Nos.:

1695074 - P10524E 1695079 - P1332E
1695075 - P10524E 1695080 - P1338E
1695076 - P11528E 1695081 - P1338E
1695077 - P11528E
1695078 - P1332E

Hardware Identification & Torque Specifications

Common Hardware Types

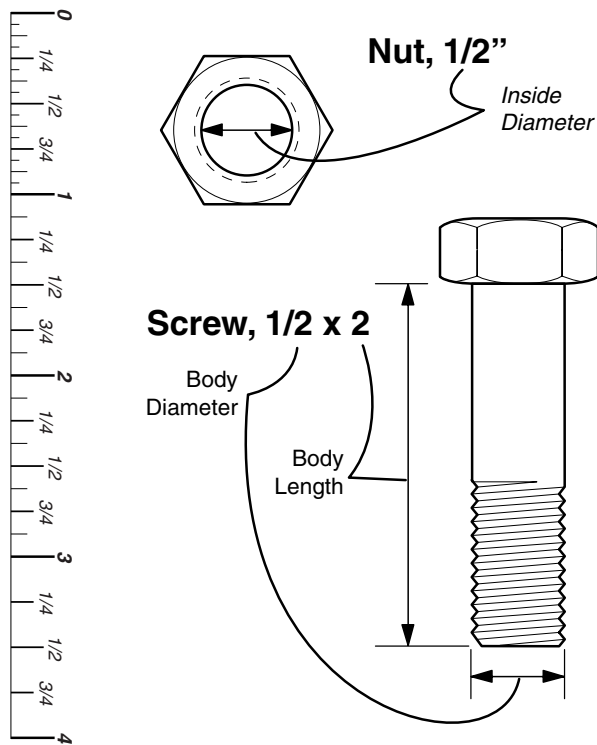


Standard Hardware Sizing

When a washer or nut is identified as 1/2", this is the *Nominal size*, meaning the *inside diameter* is 1/2 inch; if a second number is present it represents the *threads per inch*

When bolt or capscrew is identified as 1/2 - 16 x 2", this means the *Nominal size*, or *body diameter* is 1/2 inch; the second number represents the *threads per inch* (16 in this example, and the final number is the *body length* of the bolt or screw (in this example 2 inches long).

The guides and ruler furnished below are designed to help you select the appropriate hardware and tools.



Torque Specification Chart

FOR STANDARD MACHINE HARDWARE (Tolerance $\pm 20\%$)

| Hardware Grade | No Marks SAE Grade 2 | | SAE Grade 5 | | SAE Grade 8 | |
|----------------|-------------------------|-------|------------------|-------|------------------|---------|
| | in/lbs ft/lbs | Nm. | in/lbs ft/lbs | Nm. | in/lbs ft/lbs | Nm. |
| 8-32 | 19 | 2.1 | 30 | 3.4 | 41 | 4.6 |
| 8-36 | 20 | 2.3 | 31 | 3.5 | 43 | 4.9 |
| 10-24 | 27 | 3.1 | 43 | 4.9 | 60 | 6.8 |
| 10-32 | 31 | 3.5 | 49 | 5.5 | 68 | 7.7 |
| 1/4-20 | 66 | 7.6 | 8 | 10.9 | 12 | 16.3 |
| 1/4-28 | 76 | 8.6 | 10 | 13.6 | 14 | 19.0 |
| 5/16-18 | 11 | 15.0 | 17 | 23.1 | 25 | 34.0 |
| 5/16-24 | 12 | 16.3 | 19 | 25.8 | 27 | 34.0 |
| 3/8-16 | 20 | 27.2 | 30 | 40.8 | 45 | 61.2 |
| 3/8-24 | 23 | 31.3 | 35 | 47.6 | 50 | 68.0 |
| 7/16-14 | 30 | 40.8 | 50 | 68.0 | 70 | 95.2 |
| 7/16-20 | 35 | 47.6 | 55 | 74.8 | 80 | 108.8 |
| 1/2-13 | 50 | 68.0 | 75 | 102.0 | 110 | 149.6 |
| 1/2-20 | 55 | 74.8 | 90 | 122.4 | 120 | 163.2 |
| 9/16-12 | 65 | 88.4 | 110 | 149.6 | 150 | 204.0 |
| 9/16-18 | 75 | 102.0 | 120 | 163.2 | 170 | 231.2 |
| 5/8-11 | 90 | 122.4 | 150 | 204.0 | 220 | 299.2 |
| 5/8-18 | 100 | 136 | 180 | 244.8 | 240 | 326.4 |
| 3/4-10 | 160 | 217.6 | 260 | 353.6 | 386 | 525.0 |
| 3/4-16 | 180 | 244.8 | 300 | 408.0 | 420 | 571.2 |
| 7/8-9 | 140 | 190.4 | 400 | 544.0 | 600 | 816.0 |
| 7/8-14 | 155 | 210.8 | 440 | 598.4 | 660 | 897.6 |
| 1-8 | 220 | 299.2 | 580 | 788.8 | 900 | 1,244.0 |
| 1-12 | 240 | 326.4 | 640 | 870.4 | 1,000 | 1,360.0 |

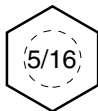
NOTES

- These torque values are to be used for all hardware excluding: locknuts, self-tapping screws, thread forming screws, sheet metal screws and socket head setscrews.
- Recommended seating torque values for locknuts:
 - for prevailing torque locknuts - use 65% of grade 5 torques.
 - for flange whizlock nuts and screws - use 135% of grade 5 torques.
- Unless otherwise noted on assembly drawings, all torque values must meet this specification.

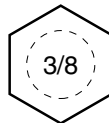
Wrench & Fastener Size Guide



1/4" Bolt or Nut
Wrench—7/16"



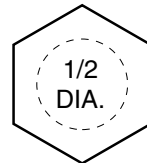
5/16" Bolt or Nut
Wrench—1/2"



3/8" Bolt or Nut
Wrench—9/16"



7/16" Bolt or Nut
Wrench (Bolt)—5/8"
Wrench (Nut)—11/16"



1/2" Bolt or Nut
Wrench—3/4"

Simplicity

MANUFACTURING, INC.
500 N. Spring Street / PO Box 997
Port Washington, WI 53074-0997 USA

www.simplicitymfg.com

Briggs and Stratton Yard Power Products Group
Copyright © 2006 by Briggs and Stratton Corporation
Milwaukee, WI, USA. All rights reserved

