

Attachment Illustrated Parts List



Attachment

Mfg. No.	Description
1694919	42" Snow Blade

Simplicity

MANUFACTURING, INC.
500 N. Spring Street / PO Box 997
Port Washington, WI 53074-0997 USA

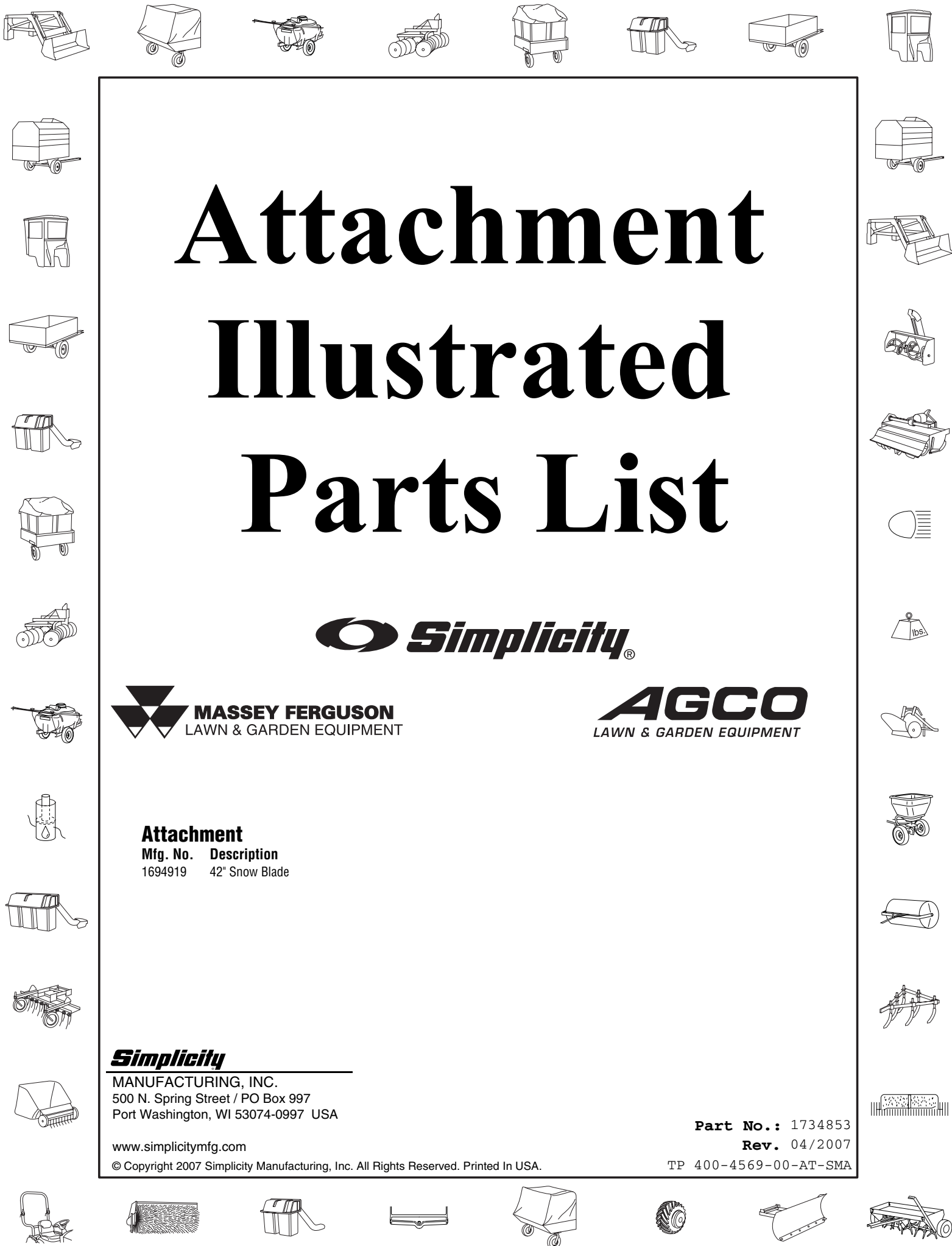
www.simplicitymfg.com

© Copyright 2007 Simplicity Manufacturing, Inc. All Rights Reserved. Printed In USA.

Part No.: 1734853

Rev. 04/2007

TP 400-4569-00-AT-SMA

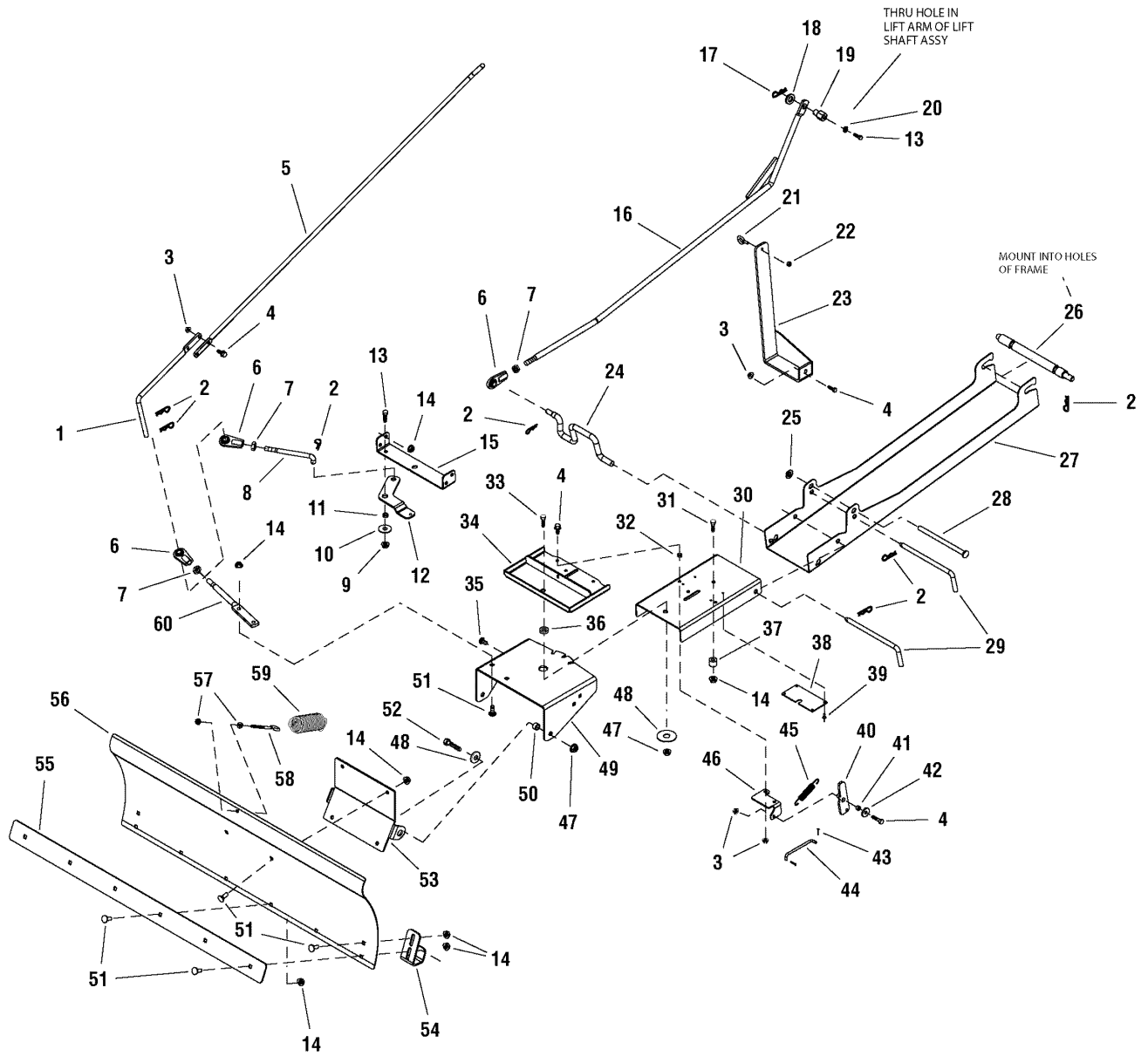


PRODUCT COMPONENTS	PAGES
42" Snow Blade Group	4
Torque Specification Chart	Inside Back Cover

42" Snow Blade Group

NOTE: Unless noted otherwise,
use the standard hardware torque
specification chart.

1694919



The above parts group applies to the following Mfg. Nos.:
1694919 - 42" Snow Blade

42" Snow Blade Group

REF NO	PART NO.	QTY.	DESCRIPTION
1	1731380SM	1	ROD, 1/2 Diameter, 10.95 LG Angle w/Flat
2	1918196SM	9	PIN, Quick
3	1960686SM	7	NUT, Hex Flange, 5/16-18 ESNA
4	1921333SM	7	CAPSCREW, Hex Head, 5/16-18 x 1
5	1732871SM	1	ROD, 1/2 Diameter Angle w/Flat Top 49.2LG
6	1702779SM	3	JOINT, Ball
7	1919262SM	3	NUT, Hex Jam, 1/2-20
8	1732149SM	1	ROD, 1/2 Diameter 5.85 LG, Latch 1/2-20 x 1-1/2
9	1919439SM	1	NUT, Hex Lock ESNA Light 3/8-16NC3B
10	1924356SM	1	WASHER, 3/8
11	1663752SM	1	SPACER
12	1732147ASM	1	LEVER, Latch 7GA 42" Snow Blade
13	1921966SM	2	CAPSCREW, Hex Head, 3/8-16 x 7/8
14	1931211SM	17	NUT, Hex Flange 3/8-16 Whiz Lock Small
15	1732594ASM	1	BRACKET, Cross, 42" Snow Blade, 10GA
16	1732144ASM	1	ROD & BRACE ASSEMBLY, Lift, 42" Blade
17	1960033SM	1	CLIP, Hair Pin
18	1924366SM	1	WASHER, 5/8
19	1732358SM	1	PIVOT, Lift
20	1916965SM	1	LOCKWASHER, Spring
21	2172162SM	1	EYEBOLT, 1/4-20
22	1920397SM	1	NUT, Hex Lock ESNA Light 1/4-20
23	1732176ASM	1	SUPPORT/BRACE ASSEMBLY, Rod 42"
24	1730080SM	1	ROD, 5/8 10.8 LG, Bellcrank
25	1960519SM	1	NUT, Push for 1/2 Diameter Stud Capped
26	1732420SM	1	ROD, 1"Diameter, 12.50 LG, Frame Latch
27	1730076ASM	1	REACH, 42" Snow 12GA
28	1713578SM	1	ROD, 1/2" Diameter 7.62LG
29	1731414SM	2	ROD, Latch
30	1730077ASM	1	HITCH, Lift 12GA
31	1920415SM	1	CAPSCREW, Hex Head 3/8-16 x 1-1/4 G5
32	1666697SM	3	SPACER
33	1921176SM	1	CAPSCREW, Hex Head 1/2-13 x 1.35
34	1732454ASM	1	BRACKET/BRACE ASSEMBLY, 42" Blade
35	1931348SM	4	CARRIAGE BOLT, 3/9-16 x 3/4
36	1719683SM	1	SPACER
37	1667812SM	1	SPACER
38	1732764SM	1	PLATE, Wear
39	1928707SM	4	RIVET, Pop
40	1732756ASM	1	LATCH, Blade
41	1703900SM	1	SPACER
42	1919381SM	1	WASHER, 3-5/16
43	1918447SM	2	COTTER PIN
44	1732355SM	1	LINK

Footnotes

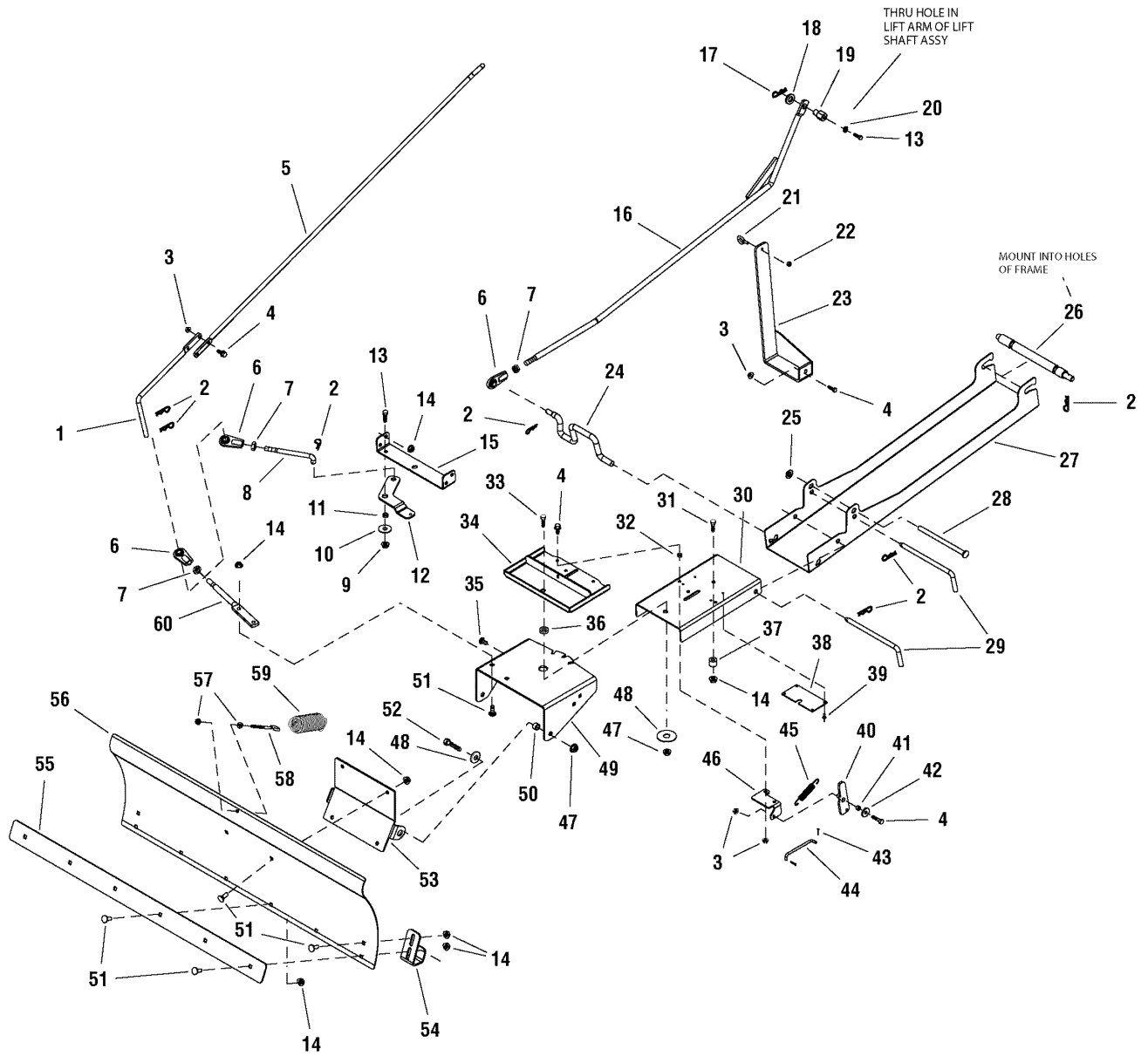
The above parts group applies to the following Mfg. Nos.:

1694919 - 42" Snow Blade

42" Snow Blade Group

NOTE: Unless noted otherwise,
use the standard hardware torque
specification chart.

1694919



The above parts group applies to the following Mfg. Nos.:

1694919 - 42" Snow Blade

42" Snow Blade Group

REF NO	PART NO.	QTY.	DESCRIPTION
48	1918431SM	3	WASHER, 1/2
49	1730078ASM	1	HITCH, Pivot
50	1709235SM	2	SPACER
51	1931350SM	12	CARRIAGE BOLT, 3/8-16 x 1
52	1921176SM	2	CAPSCREW, Hex Head, 1/2-13 x 1.35
53	1730079ASM	1	PLATE, Backer
54	1731352ASM	2	SHOE, Skid
55	1731351ASM	1	BAR, Scraper
56	1730075ASM	1	BLADE, Snow
57	1917372SM	2	NUT, Hex 5/16-18
58	1675198SM	1	EYEBOLT, 5/16-18
59	2101126SM	1	SPRING
60	1731354SM	1	ROD, 5/8" Diameter

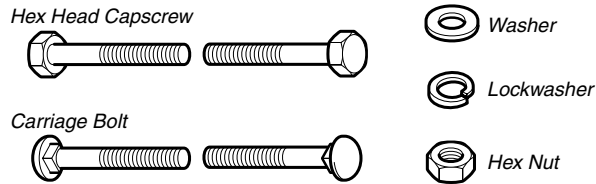
Footnotes

The above parts group applies to the following Mfg. Nos.:

1694919 - 42" Snow Blade

Hardware Identification & Torque Specifications

Common Hardware Types

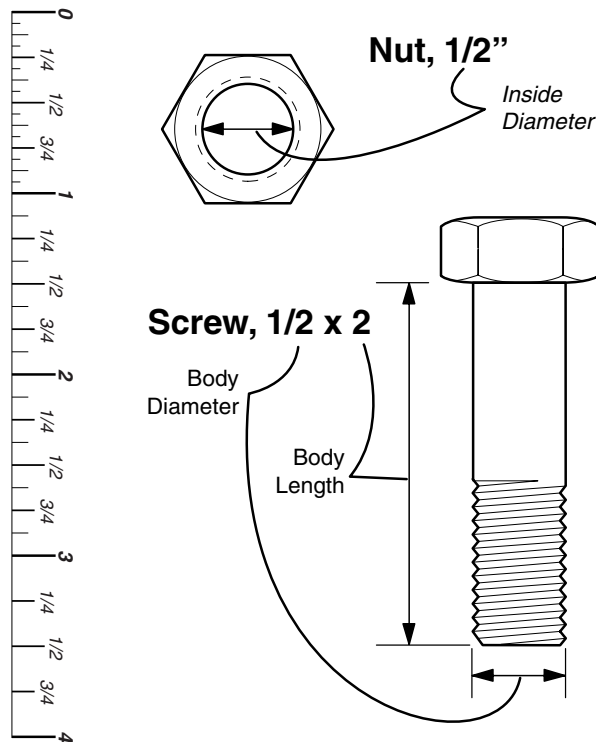


Standard Hardware Sizing

When a washer or nut is identified as **1/2"**, this is the *Nominal size*, meaning the *inside diameter* is 1/2 inch; if a second number is present it represent the *threads per inch*

When bolt or capscrew is identified as **1/2 - 16 x 2"**, this means the *Nominal size*, or *body diameter* is 1/2 inch; the second number represents the *threads per inch* (16 in this example, and the final number is the *body length* of the bolt or screw (in this example 2 inches long).

The guides and ruler furnished below are designed to help you select the appropriate hardware and tools.



Torque Specification Chart						
FOR STANDARD MACHINE HARDWARE (Tolerance ± 20%)						
Hardware Grade	No Marks SAE Grade 2		SAE Grade 5		SAE Grade 8	
	in/lbs ft/lbs	Nm.	in/lbs ft/lbs	Nm.	in/lbs ft/lbs	Nm.
8-32	19	2.1	30	3.4	41	4.6
8-36	20	2.3	31	3.5	43	4.9
10-24	27	3.1	43	4.9	60	6.8
10-32	31	3.5	49	5.5	68	7.7
1/4-20	66	7.6	8	10.9	12	16.3
1/4-28	76	8.6	10	13.6	14	19.0
5/16-18	11	15.0	17	23.1	25	34.0
5/16-24	12	16.3	19	25.8	27	34.0
3/8-16	20	27.2	30	40.8	45	61.2
3/8-24	23	31.3	35	47.6	50	68.0
7/16-14	30	40.8	50	68.0	70	95.2
7/16-20	35	47.6	55	74.8	80	108.8
1/2-13	50	68.0	75	102.0	110	149.6
1/2-20	55	74.8	90	122.4	120	163.2
9/16-12	65	88.4	110	149.6	150	204.0
9/16-18	75	102.0	120	163.2	170	231.2
5/8-11	90	122.4	150	204.0	220	299.2
5/8-18	100	136	180	244.8	240	326.4
3/4-10	160	217.6	260	353.6	386	525.0
3/4-16	180	244.8	300	408.0	420	571.2
7/8-9	140	190.4	400	544.0	600	816.0
7/8-14	155	210.8	440	598.4	660	897.6
1-8	220	299.2	580	788.8	900	1,244.0
1-12	240	326.4	640	870.4	1,000	1,360.0

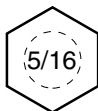
NOTES

- These torque values are to be used for all hardware excluding: locknuts, self-tapping screws, thread forming screws, sheet metal screws and socket head setscrews.
- Recommended seating torque values for locknuts:
 - for prevailing torque locknuts - use 65% of grade 5 torques.
 - for flange whizlock nuts and screws - use 135% of grade 5 torques.
- Unless otherwise noted on assembly drawings, all torque values must meet this specification.

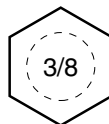
Wrench & Fastener Size Guide



1/4" Bolt or Nut
Wrench—7/16"



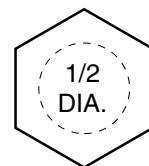
5/16" Bolt or Nut
Wrench—1/2"



3/8" Bolt or Nut
Wrench—9/16"



7/16" Bolt or Nut
Wrench (Bolt)—5/8"
Wrench (Nut)—11/16"



1/2" Bolt or Nut
Wrench—3/4"