

# ATTACHMENT ILLUSTRATED PARTS LIST



## ATTACHMENT

Mfg. No. Description  
1694238 Two Stage Snowthrower, 42"

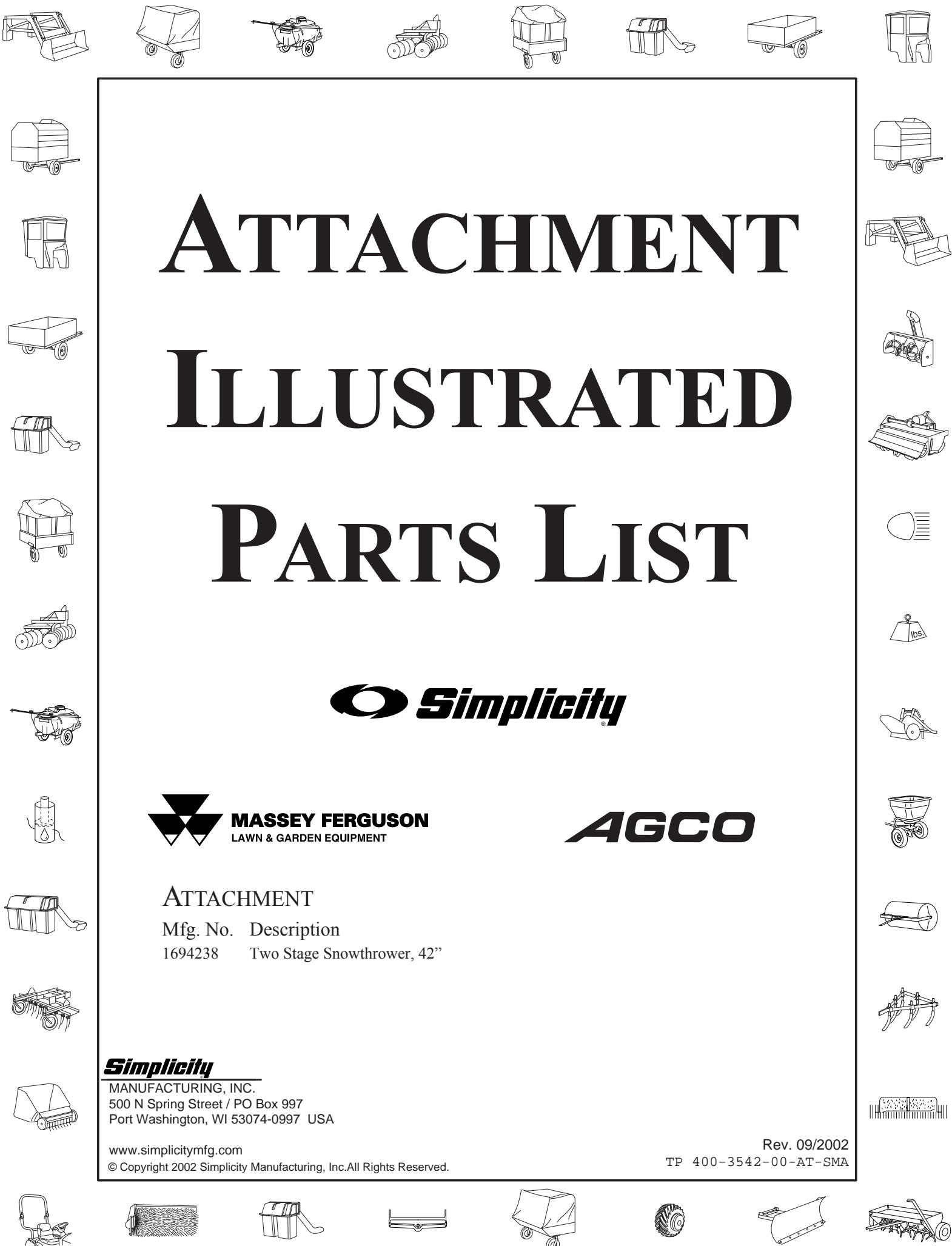
### **Simplicity**

MANUFACTURING, INC.  
500 N Spring Street / PO Box 997  
Port Washington, WI 53074-0997 USA

www.simplicitymfg.com  
© Copyright 2002 Simplicity Manufacturing, Inc. All Rights Reserved.

Rev. 09/2002

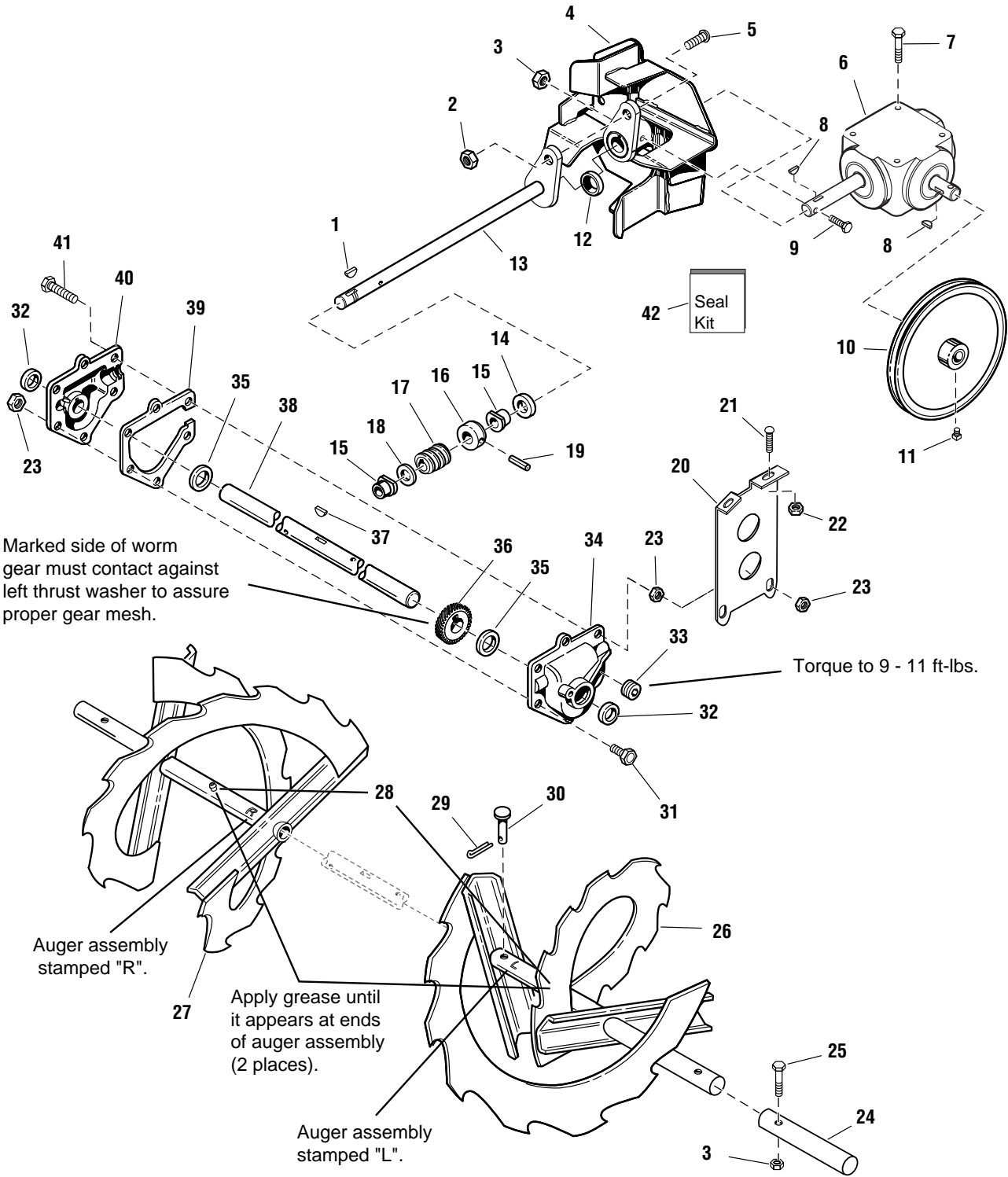
TP 400-3542-00-AT-SMA



# Auger Drive Group - 42"

986154

**NOTE:** Unless noted otherwise, use the standard hardware torque specification chart.



The above parts group applies to the following Mfg. Nos.:

1694238 Two-Stage Snowthrower, 42"

## Auger Drive Group - 42"

REF NO.	PART NO.	QTY.	DESCRIPTION
1	918312	1	KEY, Woodruff, 3/16 x 5/8
2	1919438	1	NUT, Hex Lock ESNA, 5/16-18
3	1920397	3	NUT, Hex Lock ESNA, 1/4-20
4	1723994	1	IMPELLER ASSEMBLY, 42"
5	1931335	1	CARRIAGE BOLT, 5/16-18 x 1, Black
6	1723950	1	GEARBOX ASSEMBLY, 42"
7	1933260	4	CAPSCREW, Hex Whiz Lock, 3/8-16 x 3/4
8	922138	2	KEY, Hi Pro, 1/4 x 7/8
9	1960506	1	CAPSCREW, Hex Head, 1/4-20 x 1-7/8, Black
10	1724003	1	PULLEY
11	1928721	1	SETSCREW, Square Head, 5/16-18 x 1/2
12	1723997	1	BUSHING
13	1723995	1	SHAFT, Worm
14	1612093	1	SEAL, Oil
15	1612149	2	BUSHING, Flange
16	1612127	1	COLLAR, Thrust
17	1612142	1	GEAR, Rolled Worm
18	168111	1	WASHER, Thrust
19	936098	1	PIN, Drivelok, 3/16 x 1-1/2
20	1723922	1	SUPPORT, Gear Box
21	1931333	2	CARRIAGE BOLT, 5/16-18 x 3/4
22	1931277	2	NUT, Hex Flange Whiz Lock, 5/16-18
23	1923358	8	LOCKNUT, Hex, 1/4-20
24	1723931	2	SHAFT
25	1921962	2	CAPSCREW, Hex Head, 1/4-20 x 1-3/4
26	1723991	1	AUGER ASSEMBLY, LH, 42"
27	1723990	1	AUGER ASSEMBLY, RH, 42"
28	921133	2	FITTING, Lube, 1/4
29	1918447	2	PIN, Cotter, 3/32 x 3/4
30	1668344	2	PIN, Shear
31	1960346	6	CAPSCREW, Hex Head, 1/4-20 x 7/8
32	118118	2	SEAL
33	1668971	1	PLUG, Pipe, Tapered, 1/8
34	1612136	1	CASE, Gear, LH
35	118315	2	WASHER, Thrust
36	1612141	1	GEAR, Worm
37	930246	1	KEY, Woodruff, 1/4 x 3/4
38	1612117	1	SHAFT, Auger
39	1612124	1	GASKET
40	1612137	1	CASE, Gear, RH
41	1923282	2	CAPSCREW, Hex Head, 1/4-20 x 2-1/2
42	1686947	1	SEAL KIT, for Gear Box, Reference No. 6

### Footnotes:

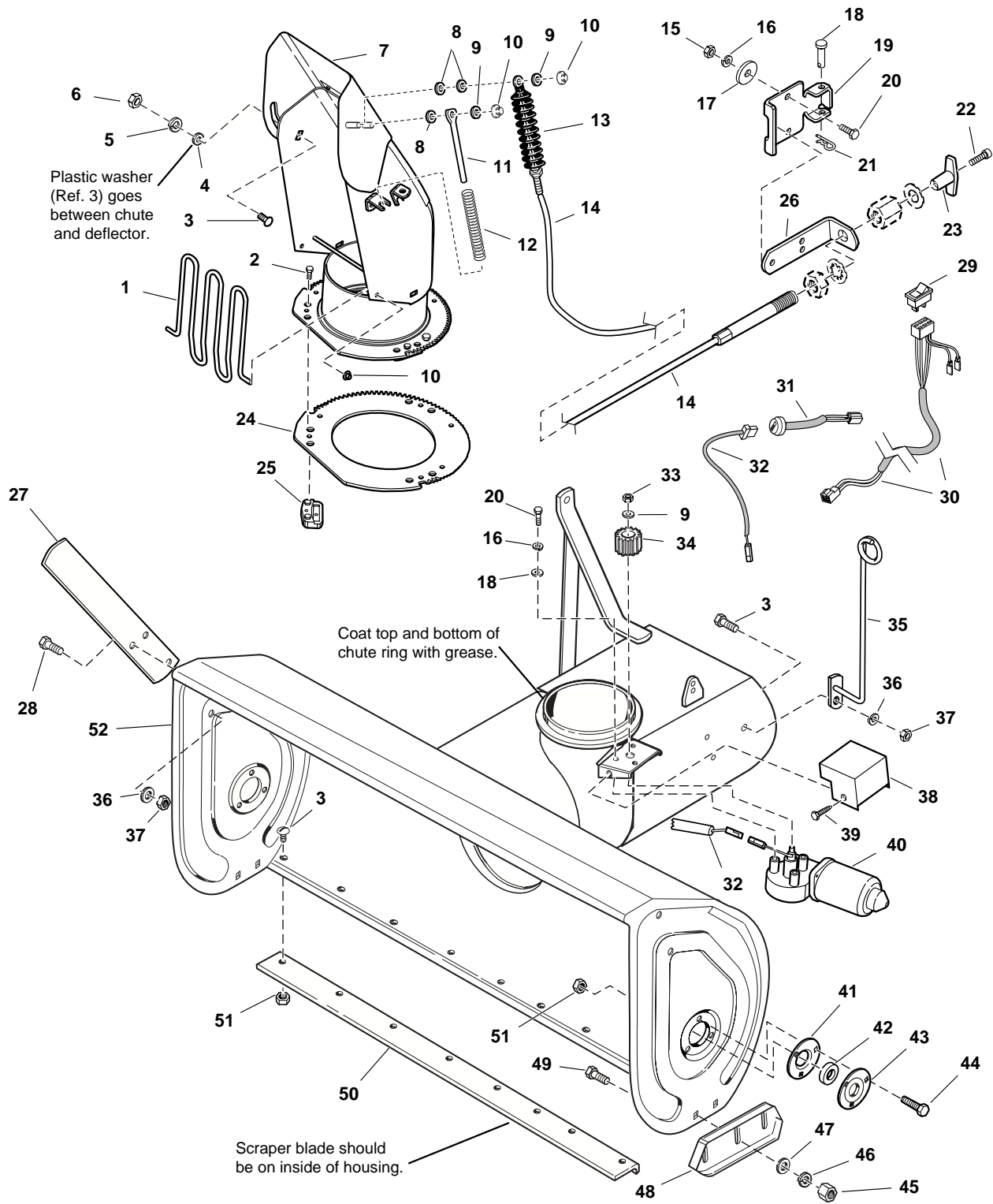
The above parts group applies to the following Mfg. Nos.:

1694238 Two-Stage Snowthrower, 42"

# Auger Housing Group - 42"

986170

NOTE: Unless noted otherwise, use the standard hardware torque specification chart.



The above parts group applies to the following Mfg. Nos.:

1694238 Two-Stage Snowthrower, 42"

## Auger Housing Group - 42"

REF NO.	PART NO.	QTY.	DESCRIPTION
1	1704446	1	GUARD & SUPPORT ASSEMBLY
2	1960001	3	SCREW, Hex Washer Head, Plastite, #10-14 x 5/8
3	1931333	11	CARRIAGE BOLT, 5/16-18 x 3/4
4	960210	1	WASHER, Nylon
5	1919326	1	WASHER, 5/17, Black
6	1919438	1	NUT, Hex Lock ESNA, 5/16-18
7	1723948	1	CHUTE & DEFLECTOR ASSEMBLY
8	1702219	3	SPACER
9	1921319	6	WASHER, 1/4, Black
10	1960126	4	NUT, Push, Black
11	1611945	1	ROD
12	1611939	1	SPRING, Compression
13	1700048	1	BOOT, Water
14	1724568	1	CABLE & KNOB ASSEMBLY (Includes Ref. Nos. 13, 22, 23, 24, 25, 27 & 28)
15	1916622	2	NUT, Hex, 1/4-20
16	1916964	3	LOCKWASHER, 1/4, Black
17	1960151	2	WASHER, 1/4, Black
18	1668344	1	PIN, Flat Head Drilled
19	1721590	1	BRACKET, Mounting
20	1924009	3	CAPSCREW, Hex Head, 1/4-20 x 7/8, Black
21	1960221	1	CLIP, Hair Pin
22	1960600	1	SCREW, Pan Head, #8-32 x 11/16
23	1719138	1	HANDLE, cable
24	1717477	1	GEAR, Chute
25	1666613	3	HOLD DOWN, Chute, Nylon
26	1705920	1	BRACKET, "L"
27	1715787	2	CUTTER, Drift
28	1921332	4	CAPSCREW, Hex Head, 5/16-18 x 3/4, Black
29	1724210	1	SWITCH, Rocker, Chute Rotator
30	1723117	1	HARNESS ASSEMBLY, Chute Rotator
31	1716987	1	HARNESS ASSEMBLY, Power Outlet
32	1722735	1	HARNESS ASSEMBLY, Spout Rotator
33	1923358	1	NUT, Hex Center Lock, 1/4-20, Black
34	1717480	1	PINION
35	1717591	1	ROD & BAR ASSEMBLY
36	1917356	7	LOCKWASHER, 5/16, Black
37	1917372	4	NUT, Hex, 5/16-18, Black
38	1723930	1	COVER, Pinion
39	1925003	2	CAPSCREW, Hex Washer Head, 1/4-20 x 1/2
40	1715885	1	MOTOR, Electric
41	172279	2	FLANGE, Bearing
42	173934	2	BEARING, Cartridge
43	172278	2	FLANGE, Bearing
44	1923325	6	CAPSCREW, Hex Head, 5/16-18 x 7/8, Black
45	1916950	4	NUT, Hex, 3/8-16, Black
46	1916965	4	LOCKWASHER, 3/8
47	1924940	4	WASHER, 3/8, Black
48	1723916	2	SKID PLATE ASSEMBLY

### Footnotes:

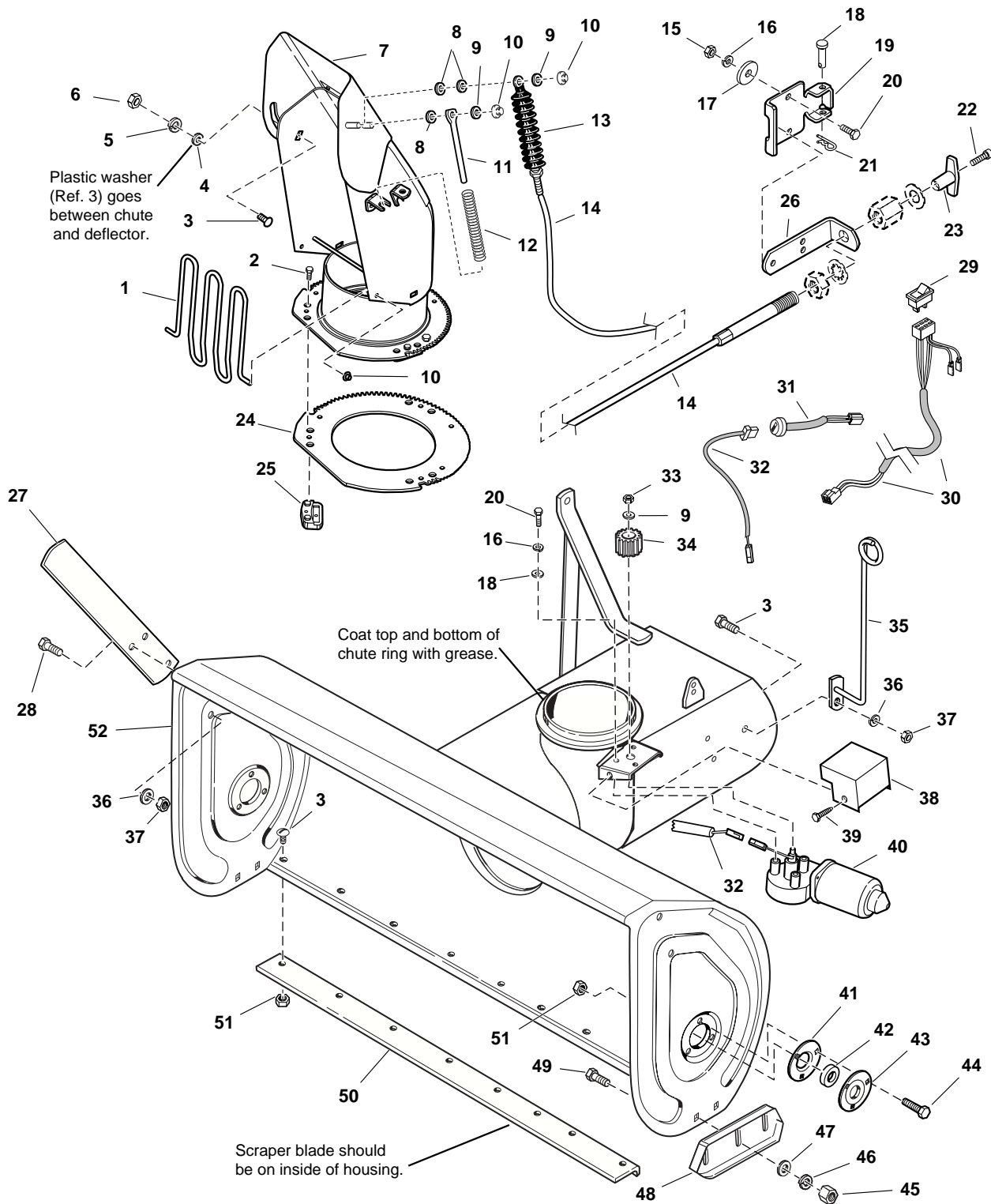
The above parts group applies to the following Mfg. Nos.:

1694238 Two-Stage Snowthrower, 42"

# Auger Housing Group - 42"

986170

NOTE: Unless noted otherwise,  
use the standard hardware torque  
specification chart.



The above parts group applies to the following Mfg. Nos.:

1694238 Two-Stage Snowthrower, 42"

### **Auger Housing Group - 42"**

---

<b>REF NO.</b>	<b>PART NO.</b>	<b>QTY.</b>	<b>DESCRIPTION</b>
49	1931350	4	CARRIAGE BOLT, 3/8-16 x 1, Black
50	1723986	1	BLADE, Scraper, 42"
51	1935048	15	NUT, Hex Flange Lock, 5/16, Black
52	1723974	1	HOUSING & IMPELLER ASSEMBLY, 42"

---

**Footnotes:**

---

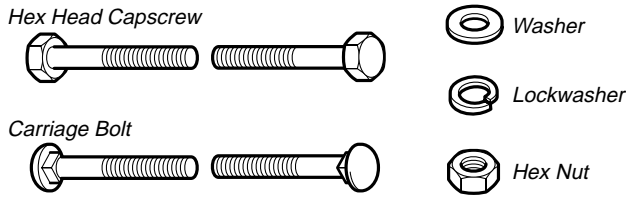
**The above parts group applies to the following Mfg. Nos.:**

1694238 Two-Stage Snowthrower, 42"



# Hardware Identification & Torque Specifications

## Common Hardware Types

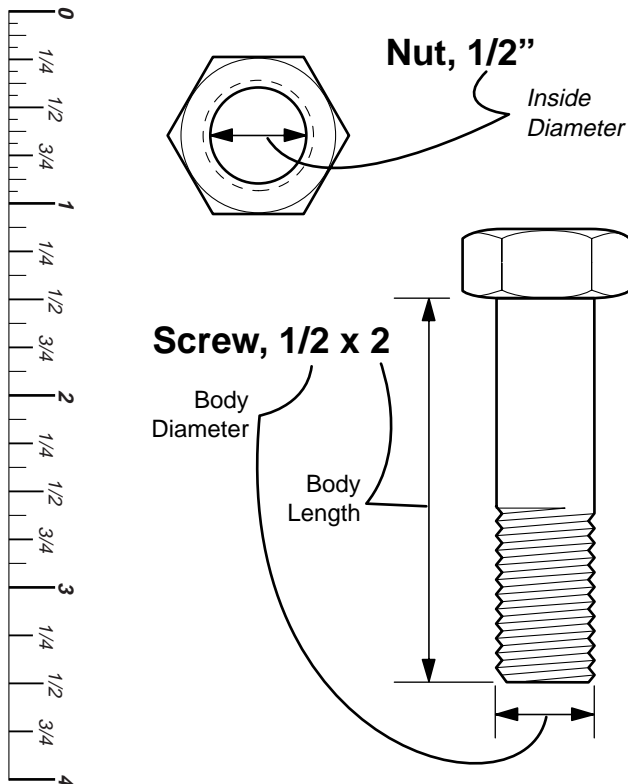


## Standard Hardware Sizing

When a washer or nut is identified as **1/2"**, this is the *Nominal size*, meaning the *inside diameter* is 1/2 inch; if a second number is present it represent the *threads per inch*

When bolt or capscrew is identified as **1/2 - 16 x 2"**, this means the *Nominal size*, or *body diameter* is 1/2 inch; the second number represents the *threads per inch* (16 in this example, and the final number is the *body length* of the bolt or screw (in this example 2 inches long).

**The guides and ruler furnished below are designed to help you select the appropriate hardware and tools.**



## Torque Specification Chart

FOR STANDARD MACHINE HARDWARE (Tolerance ± 20%)

Hardware Grade	No Marks		SAE Grade 2		SAE Grade 5		SAE Grade 8	
	in/lbs	Nm.	in/lbs	Nm.	in/lbs	Nm.	in/lbs	Nm.
8-32	19	2.1	30	3.4	41	4.6		
8-36	20	2.3	31	3.5	43	4.9		
10-24	27	3.1	43	4.9	60	6.8		
10-32	31	3.5	49	5.5	68	7.7		
1/4-20	66	7.6	8	10.9	12	16.3		
1/4-28	76	8.6	10	13.6	14	19.0		
5/16-18	11	15.0	17	23.1	25	34.0		
5/16-24	12	16.3	19	25.8	27	34.0		
3/8-16	20	27.2	30	40.8	45	61.2		
3/8-24	23	31.3	35	47.6	50	68.0		
7/16-14	30	40.8	50	68.0	70	95.2		
7/16-20	35	47.6	55	74.8	80	108.8		
1/2-13	50	68.0	75	102.0	110	149.6		
1/2-20	55	74.8	90	122.4	120	163.2		
9/16-12	65	88.4	110	149.6	150	204.0		
9/16-18	75	102.0	120	163.2	170	231.2		
5/8-11	90	122.4	150	204.0	220	299.2		
5/8-18	100	136	180	244.8	240	326.4		
3/4-10	160	217.6	260	353.6	386	525.0		
3/4-16	180	244.8	300	408.0	420	571.2		
7/8-9	140	190.4	400	544.0	600	816.0		
7/8-14	155	210.8	440	598.4	660	897.6		
1-8	220	299.2	580	788.8	900	1,244.0		
1-12	240	326.4	640	870.4	1,000	1,360.0		

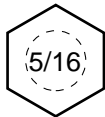
### NOTES

- These torque values are to be used for all hardware excluding: locknuts, self-tapping screws, thread forming screws, sheet metal screws and socket head setscrews.
- Recommended seating torque values for locknuts:
  - for prevailing torque locknuts - use 65% of grade 5 torques.
  - for flange whizlock nuts and screws - use 135% of grade 5 torques.
- Unless otherwise noted on assembly drawings, all torque values must meet this specification.

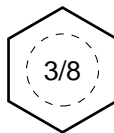
## Wrench & Fastener Size Guide



1/4" Bolt or Nut  
Wrench—7/16"



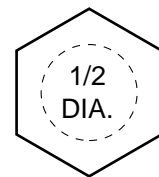
5/16" Bolt or Nut  
Wrench—1/2"



3/8" Bolt or Nut  
Wrench—9/16"



7/16" Bolt or Nut  
Wrench (Bolt)—5/8"  
Wrench (Nut)—11/16"



1/2" Bolt or Nut  
Wrench—3/4"